



Full wwPDB X-ray Structure Validation Report ⓘ

Feb 1, 2016 – 01:16 AM GMT

PDB ID : 2C65
Title : MAO INHIBITION BY RASAGILINE ANALOGUES
Authors : Binda, C.; Hubalek, F.; Li, M.; Herzig, Y.; Sterling, J.; Edmondson, D.E.;
Mattevi, A.
Deposited on : 2005-11-07
Resolution : 1.70 Å(reported)

This is a Full wwPDB X-ray Structure Validation Report for a publicly released PDB entry.
We welcome your comments at validation@mail.wwpdb.org
A user guide is available at
<http://wwpdb.org/validation/2016/XrayValidationReportHelp>
with specific help available everywhere you see the ⓘ symbol.

The following versions of software and data (see [references ⓘ](#)) were used in the production of this report:

MolProbity : 4.02b-467
Mogul : 1.7 (RC4), CSD as536be (2015)
Xtriage (Phenix) : 1.9-1692
EDS : rb-20026688
Percentile statistics : 20151230.v01 (using entries in the PDB archive December 30th 2015)
Refmac : 5.8.0135
CCP4 : 6.5.0
Ideal geometry (proteins) : Engh & Huber (2001)
Ideal geometry (DNA, RNA) : Parkinson et al. (1996)
Validation Pipeline (wwPDB-VP) : trunk26865

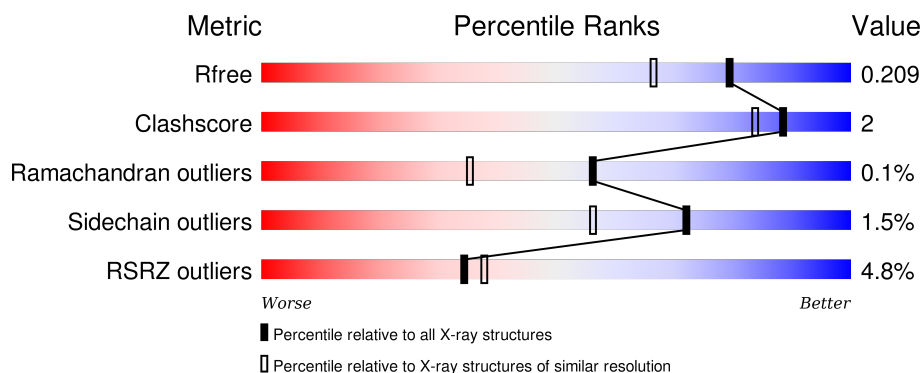
1 Overall quality at a glance

The following experimental techniques were used to determine the structure:

X-RAY DIFFRACTION

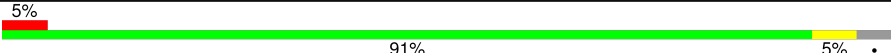

The reported resolution of this entry is 1.70 Å.

Percentile scores (ranging between 0-100) for global validation metrics of the entry are shown in the following graphic. The table shows the number of entries on which the scores are based.



Metric	Whole archive (#Entries)	Similar resolution (#Entries, resolution range(Å))
R_{free}	91344	3190 (1.70-1.70)
Clashscore	102246	3585 (1.70-1.70)
Ramachandran outliers	100387	3527 (1.70-1.70)
Sidechain outliers	100360	3527 (1.70-1.70)
RSRZ outliers	91569	3200 (1.70-1.70)

The table below summarises the geometric issues observed across the polymeric chains and their fit to the electron density. The red, orange, yellow and green segments on the lower bar indicate the fraction of residues that contain outliers for ≥ 3 , 2, 1 and 0 types of geometric quality criteria. A grey segment represents the fraction of residues that are not modelled. The numeric value for each fraction is indicated below the corresponding segment, with a dot representing fractions $\leq 5\%$. The upper red bar (where present) indicates the fraction of residues that have poor fit to the electron density. The numeric value is given above the bar.

Mol	Chain	Length	Quality of chain
1	A	520	 5% 91% 5% •
1	B	520	 4% 88% 6% • 5%

The following table lists non-polymeric compounds, carbohydrate monomers and non-standard residues in protein, DNA, RNA chains that are outliers for geometric or electron-density-fit criteria:

Mol	Type	Chain	Res	Chirality	Geometry	Clashes	Electron density
3	4CR	A	601	-	-	-	X
3	4CR	B	601	-	-	-	X

2 Entry composition [i](#)

There are 4 unique types of molecules in this entry. The entry contains 8898 atoms, of which 0 are hydrogens and 0 are deuteriums.

In the tables below, the ZeroOcc column contains the number of atoms modelled with zero occupancy, the AltConf column contains the number of residues with at least one atom in alternate conformation and the Trace column contains the number of residues modelled with at most 2 atoms.

- Molecule 1 is a protein called AMINE OXIDASE [FLAVIN-CONTAINING] B.

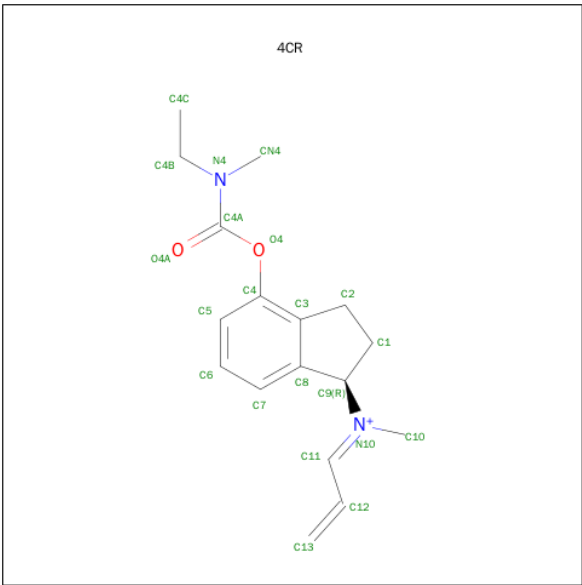
Mol	Chain	Residues	Atoms					ZeroOcc	AltConf	Trace
1	A	499	Total	C	N	O	S	0	0	0
			3971	2538	681	728	24			
1	B	494	Total	C	N	O	S	0	0	0
			3940	2519	676	721	24			

- Molecule 2 is FLAVIN-ADENINE DINUCLEOTIDE (three-letter code: FAD) (formula: $C_{27}H_{33}N_9O_{15}P_2$).



Mol	Chain	Residues	Atoms					ZeroOcc	AltConf
2	A	1	Total	C	N	O	P	0	0
			53	27	9	15	2		
2	B	1	Total	C	N	O	P	0	0
			53	27	9	15	2		

- Molecule 3 is (1R)-4-({[ETHYL(METHYL)AMINO]CARBONYL}OXY)-N-METHYL-N-[(1E)-PROP-2-EN-1-YLIDENE]INDAN-1-AMINIUM (three-letter code: 4CR) (formula: $C_{17}H_{23}N_2O_2$).



Mol	Chain	Residues	Atoms				ZeroOcc	AltConf
3	A	1	Total	C	N	O	0	0
			21	17	2	2		
3	B	1	Total	C	N	O	0	0
			21	17	2	2		

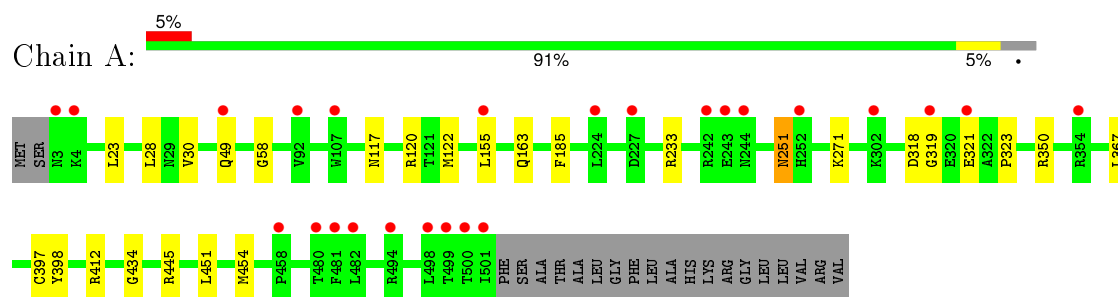
- Molecule 4 is water.

Mol	Chain	Residues	Atoms		ZeroOcc	AltConf
4	A	390	Total	O	0	0
			390	390		
4	B	449	Total	O	0	0
			449	449		

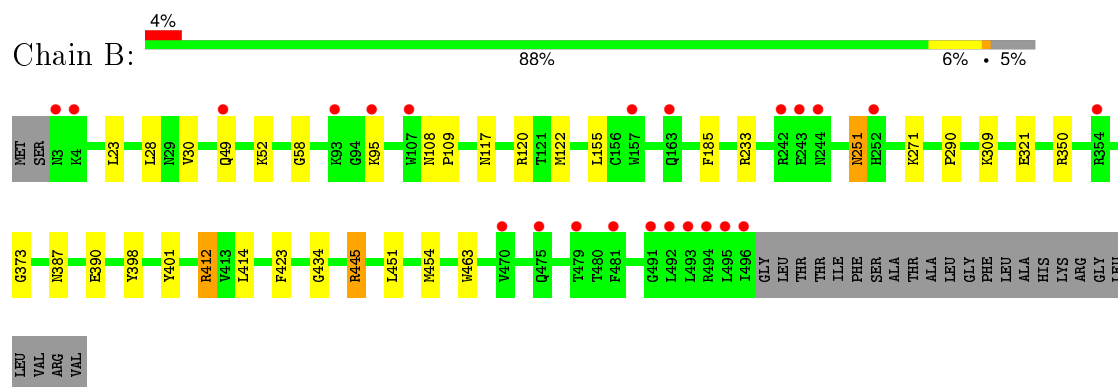
3 Residue-property plots [i](#)

These plots are drawn for all protein, RNA and DNA chains in the entry. The first graphic for a chain summarises the proportions of errors displayed in the second graphic. The second graphic shows the sequence view annotated by issues in geometry and electron density. Residues are color-coded according to the number of geometric quality criteria for which they contain at least one outlier: green = 0, yellow = 1, orange = 2 and red = 3 or more. A red dot above a residue indicates a poor fit to the electron density ($\text{RSRZ} > 2$). Stretches of 2 or more consecutive residues without any outlier are shown as a green connector. Residues present in the sample, but not in the model, are shown in grey.

• Molecule 1: AMINE OXIDASE [FLAVIN-CONTAINING] B



• Molecule 1: AMINE OXIDASE [FLAVIN-CONTAINING] B



4 Data and refinement statistics

Property	Value	Source
Space group	C 2 2 2	Depositor
Cell constants a, b, c, α , β , γ	131.69Å 222.36Å 86.15Å 90.00° 90.00° 90.00°	Depositor
Resolution (Å)	15.00 – 1.70 27.84 – 1.70	Depositor EDS
% Data completeness (in resolution range)	97.8 (15.00-1.70) 97.8 (27.84-1.70)	Depositor EDS
R_{merge}	0.09	Depositor
R_{sym}	(Not available)	Depositor
$\langle I/\sigma(I) \rangle$ ¹	2.02 (at 1.70Å)	Xtriage
Refinement program	REFMAC 5.2.0005	Depositor
R, R_{free}	0.193 , 0.210 0.192 , 0.209	Depositor DCC
R_{free} test set	3408 reflections (2.58%)	DCC
Wilson B-factor (Å ²)	15.0	Xtriage
Anisotropy	0.198	Xtriage
Bulk solvent k_{sol} (e/Å ³), B_{sol} (Å ²)	0.39 , 48.5	EDS
Estimated twinning fraction	0.012 for 1/2*h-1/2*k,-3/2*h-1/2*k,-l 0.013 for 1/2*h+1/2*k,3/2*h-1/2*k,-l	Xtriage
L-test for twinning ²	$\langle L \rangle = 0.49$, $\langle L^2 \rangle = 0.32$	Xtriage
Outliers	0 of 135458 reflections	Xtriage
F_o, F_c correlation	0.95	EDS
Total number of atoms	8898	wwPDB-VP
Average B, all atoms (Å ²)	16.0	wwPDB-VP

Xtriage's analysis on translational NCS is as follows: *The largest off-origin peak in the Patterson function is 3.93% of the height of the origin peak. No significant pseudotranslation is detected.*

¹Intensities estimated from amplitudes.

²Theoretical values of $\langle |L| \rangle$, $\langle L^2 \rangle$ for acentric reflections are 0.5, 0.375 respectively for untwinned datasets, and 0.333, 0.2 for perfectly twinned datasets.

5 Model quality [i](#)

5.1 Standard geometry [i](#)

Bond lengths and bond angles in the following residue types are not validated in this section: 4CR, FAD

The Z score for a bond length (or angle) is the number of standard deviations the observed value is removed from the expected value. A bond length (or angle) with $|Z| > 5$ is considered an outlier worth inspection. RMSZ is the root-mean-square of all Z scores of the bond lengths (or angles).

Mol	Chain	Bond lengths		Bond angles	
		RMSZ	$\# Z > 5$	RMSZ	$\# Z > 5$
1	A	0.38	0/4068	0.53	1/5522 (0.0%)
1	B	0.39	0/4037	0.54	1/5479 (0.0%)
All	All	0.38	0/8105	0.54	2/11001 (0.0%)

There are no bond length outliers.

All (2) bond angle outliers are listed below:

Mol	Chain	Res	Type	Atoms	Z	Observed(°)	Ideal(°)
1	B	445	ARG	NE-CZ-NH1	8.48	124.54	120.30
1	A	445	ARG	NE-CZ-NH2	5.01	122.81	120.30

There are no chirality outliers.

There are no planarity outliers.

5.2 Too-close contacts [i](#)

In the following table, the Non-H and H(model) columns list the number of non-hydrogen atoms and hydrogen atoms in the chain respectively. The H(added) column lists the number of hydrogen atoms added and optimized by MolProbity. The Clashes column lists the number of clashes within the asymmetric unit, whereas Symm-Clashes lists symmetry related clashes.

Mol	Chain	Non-H	H(model)	H(added)	Clashes	Symm-Clashes
1	A	3971	0	3967	17	0
1	B	3940	0	3937	23	0
2	A	53	0	29	2	0
2	B	53	0	29	2	0
3	A	21	0	22	0	0
3	B	21	0	22	0	0
4	A	390	0	0	1	0

Continued on next page...

Continued from previous page...

Mol	Chain	Non-H	H(model)	H(added)	Clashes	Symm-Clashes
4	B	449	0	0	4	0
All	All	8898	0	8006	40	0

The all-atom clashscore is defined as the number of clashes found per 1000 atoms (including hydrogen atoms). The all-atom clashscore for this structure is 2.

All (40) close contacts within the same asymmetric unit are listed below, sorted by their clash magnitude.

Atom-1	Atom-2	Interatomic distance (Å)	Clash overlap (Å)
1:B:414:LEU:HD12	4:B:2382:HOH:O	1.85	0.75
1:A:117:ASN:HD22	1:A:120:ARG:HH21	1.35	0.75
1:B:117:ASN:HD22	1:B:120:ARG:HH21	1.35	0.74
1:A:251:ASN:H	1:A:251:ASN:HD22	1.41	0.67
1:B:251:ASN:H	1:B:251:ASN:HD22	1.42	0.67
1:B:271:LYS:HE2	4:B:2371:HOH:O	2.00	0.62
1:B:412:ARG:HG2	4:B:2379:HOH:O	2.02	0.57
1:B:445:ARG:HD2	1:B:463:TRP:CZ2	2.40	0.57
1:A:271:LYS:HE2	4:A:2311:HOH:O	2.04	0.56
1:B:122:MET:CE	1:B:185:PHE:HE2	2.18	0.56
1:A:163:GLN:HB3	1:A:318:ASP:OD2	2.06	0.56
1:B:233:ARG:HG3	1:B:251:ASN:HD21	1.76	0.51
1:B:387:ASN:O	1:B:390:GLU:HG2	2.11	0.51
1:A:233:ARG:HG3	1:A:251:ASN:HD21	1.76	0.51
1:B:423:PHE:O	1:B:445:ARG:NH2	2.31	0.48
1:B:309:LYS:NZ	1:B:373:GLY:O	2.47	0.48
1:A:122:MET:CE	1:A:185:PHE:HE2	2.26	0.47
1:B:451:LEU:HD23	1:B:454:MET:HE2	1.96	0.47
1:A:318:ASP:OD1	1:A:319:GLY:N	2.47	0.47
1:A:454:MET:HB2	1:A:454:MET:HE3	1.65	0.47
1:A:28:LEU:HD11	1:A:454:MET:CE	2.46	0.46
1:B:28:LEU:HD11	1:B:454:MET:CE	2.47	0.45
1:B:58:GLY:HA2	2:B:600:FAD:C4X	2.47	0.45
1:B:451:LEU:HD23	1:B:454:MET:CE	2.47	0.45
1:B:23:LEU:HB2	1:B:30:VAL:HG11	1.99	0.44
1:A:451:LEU:HD23	1:A:454:MET:HE2	1.99	0.44
1:A:58:GLY:HA2	2:A:600:FAD:C4X	2.47	0.44
1:B:108:ASN:HA	1:B:109:PRO:HD3	1.90	0.44
1:A:117:ASN:HD22	1:A:120:ARG:NH2	2.11	0.43
1:B:95:LYS:HG2	4:B:2118:HOH:O	2.18	0.43
1:B:122:MET:CE	1:B:185:PHE:CE2	3.02	0.42
1:A:434:GLY:O	2:A:600:FAD:H1'2	2.19	0.42

Continued on next page...

Continued from previous page...

Atom-1	Atom-2	Interatomic distance (Å)	Clash overlap (Å)
1:B:454:MET:HB2	1:B:454:MET:HE3	1.65	0.42
1:B:321:GLU:CD	1:B:321:GLU:H	2.23	0.42
1:A:23:LEU:HB2	1:A:30:VAL:HG11	2.00	0.41
1:B:434:GLY:O	2:B:600:FAD:H1'2	2.21	0.41
1:A:323:PRO:HD2	1:A:367:LEU:HD22	2.03	0.41
1:A:451:LEU:HD23	1:A:454:MET:CE	2.51	0.41
1:A:321:GLU:H	1:A:321:GLU:CD	2.24	0.41
1:B:290:PRO:HG2	1:B:401:TYR:CZ	2.55	0.41

There are no symmetry-related clashes.

5.3 Torsion angles [i](#)

5.3.1 Protein backbone [i](#)

In the following table, the Percentiles column shows the percent Ramachandran outliers of the chain as a percentile score with respect to all X-ray entries followed by that with respect to entries of similar resolution.

The Analysed column shows the number of residues for which the backbone conformation was analysed, and the total number of residues.

Mol	Chain	Analysed	Favoured	Allowed	Outliers	Percentiles	
1	A	497/520 (96%)	487 (98%)	10 (2%)	0	100	100
1	B	492/520 (95%)	482 (98%)	9 (2%)	1 (0%)	52	32
All	All	989/1040 (95%)	969 (98%)	19 (2%)	1 (0%)	56	35

All (1) Ramachandran outliers are listed below:

Mol	Chain	Res	Type
1	B	52	LYS

5.3.2 Protein sidechains [i](#)

In the following table, the Percentiles column shows the percent sidechain outliers of the chain as a percentile score with respect to all X-ray entries followed by that with respect to entries of similar resolution.

The Analysed column shows the number of residues for which the sidechain conformation was analysed, and the total number of residues.

Mol	Chain	Analysed	Rotameric	Outliers	Percentiles	
1	A	427/444 (96%)	420 (98%)	7 (2%)	70	54
1	B	424/444 (96%)	418 (99%)	6 (1%)	74	59
All	All	851/888 (96%)	838 (98%)	13 (2%)	72	56

All (13) residues with a non-rotameric sidechain are listed below:

Mol	Chain	Res	Type
1	A	49	GLN
1	A	155	LEU
1	A	251	ASN
1	A	350	ARG
1	A	397	CYS
1	A	398	TYR
1	A	412	ARG
1	B	49	GLN
1	B	155	LEU
1	B	251	ASN
1	B	350	ARG
1	B	398	TYR
1	B	412	ARG

Some sidechains can be flipped to improve hydrogen bonding and reduce clashes. All (6) such sidechains are listed below:

Mol	Chain	Res	Type
1	A	49	GLN
1	A	117	ASN
1	A	251	ASN
1	B	49	GLN
1	B	117	ASN
1	B	251	ASN

5.3.3 RNA ⓘ

There are no RNA molecules in this entry.

5.4 Non-standard residues in protein, DNA, RNA chains ⓘ

There are no non-standard protein/DNA/RNA residues in this entry.

5.5 Carbohydrates [i](#)

There are no carbohydrates in this entry.

5.6 Ligand geometry [i](#)

4 ligands are modelled in this entry.

In the following table, the Counts columns list the number of bonds (or angles) for which Mogul statistics could be retrieved, the number of bonds (or angles) that are observed in the model and the number of bonds (or angles) that are defined in the chemical component dictionary. The Link column lists molecule types, if any, to which the group is linked. The Z score for a bond length (or angle) is the number of standard deviations the observed value is removed from the expected value. A bond length (or angle) with $|Z| > 2$ is considered an outlier worth inspection. RMSZ is the root-mean-square of all Z scores of the bond lengths (or angles).

Mol	Type	Chain	Res	Link	Bond lengths			Bond angles		
					Counts	RMSZ	# $ Z > 2$	Counts	RMSZ	# $ Z > 2$
2	FAD	A	600	1,3	48,58,58	1.24	7 (14%)	54,89,89	2.16	7 (12%)
3	4CR	A	601	2	19,22,22	1.40	2 (10%)	21,30,30	1.78	5 (23%)
2	FAD	B	600	1,3	48,58,58	1.25	5 (10%)	54,89,89	2.20	6 (11%)
3	4CR	B	601	2	19,22,22	1.40	1 (5%)	21,30,30	1.86	5 (23%)

In the following table, the Chirals column lists the number of chiral outliers, the number of chiral centers analysed, the number of these observed in the model and the number defined in the chemical component dictionary. Similar counts are reported in the Torsion and Rings columns. '-' means no outliers of that kind were identified.

Mol	Type	Chain	Res	Link	Chirals	Torsions	Rings
2	FAD	A	600	1,3	-	0/30/50/50	0/6/6/6
3	4CR	A	601	2	-	0/12/26/26	0/2/2/2
2	FAD	B	600	1,3	-	0/30/50/50	0/6/6/6
3	4CR	B	601	2	-	0/12/26/26	0/2/2/2

All (15) bond length outliers are listed below:

Mol	Chain	Res	Type	Atoms	Z	Observed(Å)	Ideal(Å)
3	A	601	4CR	C11-N10	-2.49	1.28	1.30
2	A	600	FAD	C5X-N5	2.13	1.38	1.35
2	A	600	FAD	C10-N1	2.16	1.39	1.35
2	B	600	FAD	C2A-N1A	2.52	1.38	1.33
2	A	600	FAD	C1'-N10	2.52	1.51	1.48
2	A	600	FAD	C2A-N1A	2.53	1.38	1.33

Continued on next page...

Continued from previous page...

Mol	Chain	Res	Type	Atoms	Z	Observed(Å)	Ideal(Å)
2	B	600	FAD	C1'-N10	2.68	1.51	1.48
2	A	600	FAD	C4-N3	2.91	1.38	1.33
2	B	600	FAD	C4-N3	2.98	1.38	1.33
2	A	600	FAD	C2A-N3A	3.30	1.38	1.32
2	B	600	FAD	C2A-N3A	3.37	1.38	1.32
2	B	600	FAD	C4X-N5	3.75	1.39	1.33
2	A	600	FAD	C4X-N5	4.02	1.39	1.33
3	A	601	4CR	O4-C4A	4.14	1.45	1.36
3	B	601	4CR	O4-C4A	4.56	1.46	1.36

All (23) bond angle outliers are listed below:

Mol	Chain	Res	Type	Atoms	Z	Observed(°)	Ideal(°)
2	B	600	FAD	N3A-C2A-N1A	-12.13	119.61	128.89
2	A	600	FAD	N3A-C2A-N1A	-11.79	119.86	128.89
3	B	601	4CR	O4-C4A-O4A	-3.37	118.10	123.93
2	A	600	FAD	C4X-C10-N10	-3.26	118.60	120.52
3	A	601	4CR	O4-C4A-O4A	-3.25	118.31	123.93
2	A	600	FAD	C1B-N9A-C4A	-3.24	122.06	126.94
3	A	601	4CR	C12-C11-N10	-2.96	122.78	126.19
2	B	600	FAD	C1B-N9A-C4A	-2.95	122.48	126.94
2	B	600	FAD	C4X-C10-N10	-2.91	118.80	120.52
2	B	600	FAD	C4X-C4-N3	-2.78	119.79	123.59
2	B	600	FAD	C9A-C5X-N5	-2.75	118.28	122.36
2	A	600	FAD	C4X-C4-N3	-2.66	119.95	123.59
3	B	601	4CR	C12-C11-N10	-2.44	123.39	126.19
2	A	600	FAD	C9A-C5X-N5	-2.36	118.87	122.36
3	B	601	4CR	C6-C7-C8	-2.35	117.96	121.02
3	A	601	4CR	C6-C7-C8	-2.09	118.30	121.02
2	A	600	FAD	P-O3P-PA	-2.04	127.00	132.73
3	A	601	4CR	C13-C12-C11	2.33	126.04	122.69
3	B	601	4CR	C13-C12-C11	2.41	126.15	122.69
3	A	601	4CR	O4-C4A-N4	4.90	117.95	111.01
3	B	601	4CR	O4-C4A-N4	5.16	118.32	111.01
2	A	600	FAD	C4-N3-C2	6.46	120.83	115.25
2	B	600	FAD	C4-N3-C2	6.69	121.03	115.25

There are no chirality outliers.

There are no torsion outliers.

There are no ring outliers.

2 monomers are involved in 4 short contacts:

Mol	Chain	Res	Type	Clashes	Symm-Clashes
2	A	600	FAD	2	0
2	B	600	FAD	2	0

5.7 Other polymers [i](#)

There are no such residues in this entry.

5.8 Polymer linkage issues [i](#)

There are no chain breaks in this entry.

6 Fit of model and data ⓘ

6.1 Protein, DNA and RNA chains ⓘ

In the following table, the column labelled ‘#RSRZ> 2’ contains the number (and percentage) of RSRZ outliers, followed by percent RSRZ outliers for the chain as percentile scores relative to all X-ray entries and entries of similar resolution. The OWAB column contains the minimum, median, 95th percentile and maximum values of the occupancy-weighted average B-factor per residue. The column labelled ‘Q< 0.9’ lists the number of (and percentage) of residues with an average occupancy less than 0.9.

Mol	Chain	Analysed	<RSRZ>	#RSRZ>2	OWAB(Å ²)	Q<0.9
1	A	499/520 (95%)	0.18	25 (5%) 32 35	8, 14, 28, 55	0
1	B	494/520 (95%)	0.24	23 (4%) 35 39	8, 14, 27, 48	0
All	All	993/1040 (95%)	0.21	48 (4%) 34 38	8, 14, 28, 55	0

All (48) RSRZ outliers are listed below:

Mol	Chain	Res	Type	RSRZ
1	B	495	LEU	10.1
1	B	496	ILE	6.0
1	B	494	ARG	6.0
1	A	107	TRP	5.9
1	B	107	TRP	5.5
1	A	252	HIS	5.1
1	B	243	GLU	4.9
1	A	498	LEU	4.8
1	B	242	ARG	4.7
1	B	252	HIS	4.4
1	A	319	GLY	4.1
1	A	494	ARG	4.0
1	B	244	ASN	3.8
1	A	354	ARG	3.8
1	B	3	ASN	3.8
1	A	242	ARG	3.7
1	B	481	PHE	3.7
1	A	500	THR	3.6
1	B	493	LEU	3.5
1	A	243	GLU	3.5
1	A	3	ASN	3.4
1	A	501	ILE	3.3
1	A	481	PHE	3.3
1	B	354	ARG	3.3

Continued on next page...

Continued from previous page...

Mol	Chain	Res	Type	RSRZ
1	A	458	PRO	3.1
1	B	95	LYS	3.1
1	A	499	THR	3.0
1	B	470	VAL	2.8
1	B	93	LYS	2.8
1	B	157	TRP	2.8
1	A	49	GLN	2.7
1	A	482	LEU	2.7
1	A	227	ASP	2.7
1	B	4	LYS	2.6
1	B	163	GLN	2.6
1	A	155	LEU	2.5
1	B	491	GLY	2.5
1	B	492	LEU	2.4
1	A	244	ASN	2.4
1	A	92	VAL	2.3
1	A	224	LEU	2.3
1	A	302	LYS	2.2
1	B	475	GLN	2.3
1	B	49	GLN	2.2
1	A	4	LYS	2.1
1	A	321	GLU	2.1
1	A	480	THR	2.0
1	B	479	THR	2.0

6.2 Non-standard residues in protein, DNA, RNA chains [i](#)

There are no non-standard protein/DNA/RNA residues in this entry.

6.3 Carbohydrates [i](#)

There are no carbohydrates in this entry.

6.4 Ligands [i](#)

In the following table, the Atoms column lists the number of modelled atoms in the group and the number defined in the chemical component dictionary. LLDF column lists the quality of electron density of the group with respect to its neighbouring residues in protein, DNA or RNA chains. The B-factors column lists the minimum, median, 95th percentile and maximum values of B factors of atoms in the group. The column labelled 'Q < 0.9' lists the number of atoms with occupancy less than 0.9.

Mol	Type	Chain	Res	Atoms	RSCC	RSR	LLDF	B-factors(\AA^2)	Q<0.9
3	4CR	A	601	21/21	0.94	0.17	3.31	15,17,22,24	0
3	4CR	B	601	21/21	0.93	0.16	2.35	15,17,22,24	0
2	FAD	A	600	53/53	0.97	0.08	-0.30	8,10,12,12	0
2	FAD	B	600	53/53	0.98	0.09	-0.33	8,10,12,12	0

6.5 Other polymers [i](#)

There are no such residues in this entry.