



Full wwPDB X-ray Structure Validation Report ⓘ

Feb 1, 2016 – 03:28 PM GMT

PDB ID : 4CBC
Title : Open-form NavMS Sodium Channel Pore (with C-terminal Domain) after thallium soak
Authors : Bagneris, C.; Naylor, C.E.; Wallace, B.A.
Deposited on : 2013-10-12
Resolution : 2.66 Å(reported)

This is a Full wwPDB X-ray Structure Validation Report for a publicly released PDB entry.
We welcome your comments at validation@mail.wwpdb.org
A user guide is available at
<http://wwpdb.org/validation/2016/XrayValidationReportHelp>
with specific help available everywhere you see the ⓘ symbol.

The following versions of software and data (see [references ⓘ](#)) were used in the production of this report:

MolProbity : 4.02b-467
Mogul : 1.7 (RC4), CSD as536be (2015)
Xtriage (Phenix) : 1.9-1692
EDS : rb-20026688
Percentile statistics : 20151230.v01 (using entries in the PDB archive December 30th 2015)
Refmac : 5.8.0135
CCP4 : 6.5.0
Ideal geometry (proteins) : Engh & Huber (2001)
Ideal geometry (DNA, RNA) : Parkinson et al. (1996)
Validation Pipeline (wwPDB-VP) : trunk26865

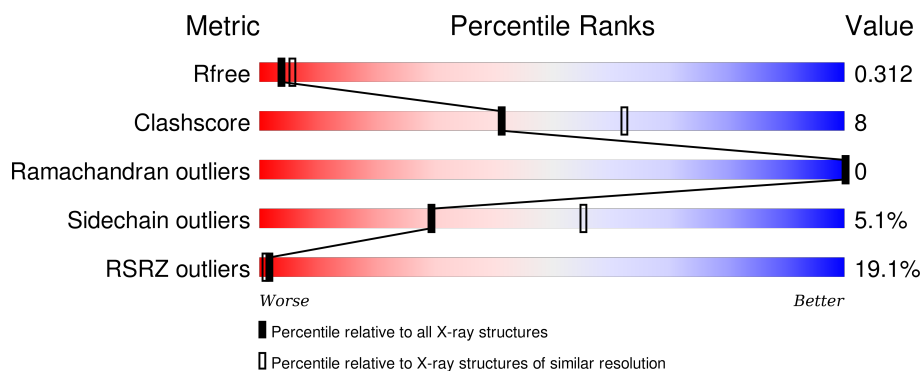
1 Overall quality at a glance

The following experimental techniques were used to determine the structure:

X-RAY DIFFRACTION

The reported resolution of this entry is 2.66 Å.

Percentile scores (ranging between 0-100) for global validation metrics of the entry are shown in the following graphic. The table shows the number of entries on which the scores are based.



Metric	Whole archive (#Entries)	Similar resolution (#Entries, resolution range(Å))
R_{free}	91344	3152 (2.70-2.62)
Clashscore	102246	3524 (2.70-2.62)
Ramachandran outliers	100387	3469 (2.70-2.62)
Sidechain outliers	100360	3469 (2.70-2.62)
RSRZ outliers	91569	3161 (2.70-2.62)

The table below summarises the geometric issues observed across the polymeric chains and their fit to the electron density. The red, orange, yellow and green segments on the lower bar indicate the fraction of residues that contain outliers for ≥ 3 , 2, 1 and 0 types of geometric quality criteria. A grey segment represents the fraction of residues that are not modelled. The numeric value for each fraction is indicated below the corresponding segment, with a dot representing fractions $\leq 5\%$. The upper red bar (where present) indicates the fraction of residues that have poor fit to the electron density. The numeric value is given above the bar.

Mol	Chain	Length	Quality of chain
1	A	149	<div> <div>13%</div> <div>48%</div> <div>13%</div> <div>38%</div> </div>
1	B	149	<div> <div>13%</div> <div>48%</div> <div>13%</div> <div>38%</div> </div>
1	C	149	<div> <div>12%</div> <div>56%</div> <div>5%</div> <div>38%</div> </div>
1	D	149	<div> <div>10%</div> <div>50%</div> <div>11%</div> <div>38%</div> </div>

The following table lists non-polymeric compounds, carbohydrate monomers and non-standard residues in protein, DNA, RNA chains that are outliers for geometric or electron-density-fit crite-

ria:

Mol	Type	Chain	Res	Chirality	Geometry	Clashes	Electron density
2	2CV	A	1201	-	-	-	X
2	2CV	A	1202	-	-	-	X
2	2CV	B	1201	-	-	-	X
2	2CV	B	1202	-	-	-	X
2	2CV	D	1201	-	-	-	X

2 Entry composition

There are 4 unique types of molecules in this entry. The entry contains 3125 atoms, of which 0 are hydrogens and 0 are deuteriums.

In the tables below, the ZeroOcc column contains the number of atoms modelled with zero occupancy, the AltConf column contains the number of residues with at least one atom in alternate conformation and the Trace column contains the number of residues modelled with at most 2 atoms.

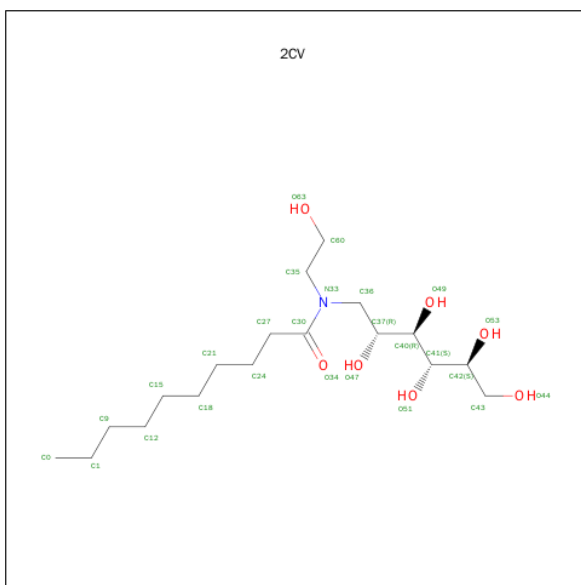
- Molecule 1 is a protein called ION TRANSPORT PROTEIN.

Mol	Chain	Residues	Atoms					ZeroOcc	AltConf	Trace
1	A	93	Total	C	N	O	S	0	0	0
			728	493	107	122	6			
1	B	93	Total	C	N	O	S	0	0	0
			728	493	107	122	6			
1	C	93	Total	C	N	O	S	0	0	0
			728	493	107	122	6			
1	D	93	Total	C	N	O	S	0	0	0
			728	493	107	122	6			

There are 16 discrepancies between the modelled and reference sequences:

Chain	Residue	Modelled	Actual	Comment	Reference
A	126	GLY	-	EXPRESSION TAG	UNP A0L5S6
A	127	SER	-	EXPRESSION TAG	UNP A0L5S6
A	128	HIS	-	EXPRESSION TAG	UNP A0L5S6
A	129	MET	-	EXPRESSION TAG	UNP A0L5S6
B	126	GLY	-	EXPRESSION TAG	UNP A0L5S6
B	127	SER	-	EXPRESSION TAG	UNP A0L5S6
B	128	HIS	-	EXPRESSION TAG	UNP A0L5S6
B	129	MET	-	EXPRESSION TAG	UNP A0L5S6
C	126	GLY	-	EXPRESSION TAG	UNP A0L5S6
C	127	SER	-	EXPRESSION TAG	UNP A0L5S6
C	128	HIS	-	EXPRESSION TAG	UNP A0L5S6
C	129	MET	-	EXPRESSION TAG	UNP A0L5S6
D	126	GLY	-	EXPRESSION TAG	UNP A0L5S6
D	127	SER	-	EXPRESSION TAG	UNP A0L5S6
D	128	HIS	-	EXPRESSION TAG	UNP A0L5S6
D	129	MET	-	EXPRESSION TAG	UNP A0L5S6

- Molecule 2 is HEGA-10 (three-letter code: 2CV) (formula: C₁₈H₃₇NO₇).



Mol	Chain	Residues	Atoms				ZeroOcc	AltConf
2	A	1	Total	C	N	O	0	0
			26	18	1	7		
2	A	1	Total	C	N	O	0	0
			13	11	1	1		
2	B	1	Total	C	N	O	0	0
			26	18	1	7		
2	B	1	Total	C	N	O	0	0
			16	13	1	2		
2	C	1	Total	C	N	O	0	0
			18	13	1	4		
2	D	1	Total	C	N	O	0	0
			20	15	1	4		

- Molecule 3 is SODIUM ION (three-letter code: NA) (formula: Na).

Mol	Chain	Residues	Atoms		ZeroOcc	AltConf
3	A	3	Total	Na	0	0
			3	3		
3	C	3	Total	Na	0	0
			3	3		

- Molecule 4 is water.

Mol	Chain	Residues	Atoms		ZeroOcc	AltConf
4	A	22	Total	O	0	0
			22	22		

Continued on next page...

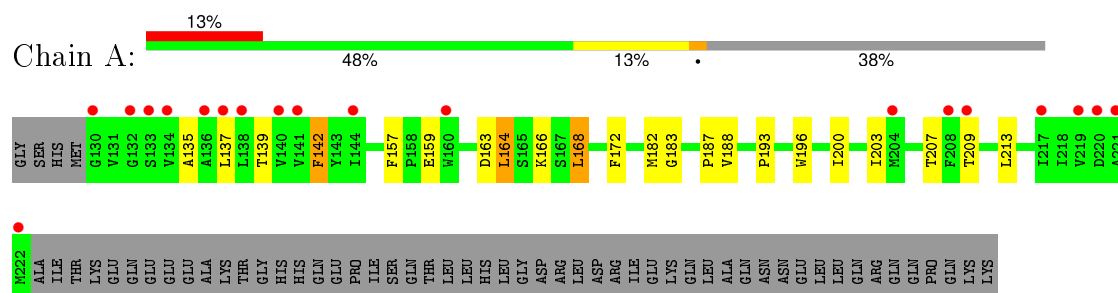
Continued from previous page...

Mol	Chain	Residues	Atoms		ZeroOcc	AltConf
4	B	21	Total 21	O 21	0	0
4	C	22	Total 22	O 22	0	0
4	D	23	Total 23	O 23	0	0

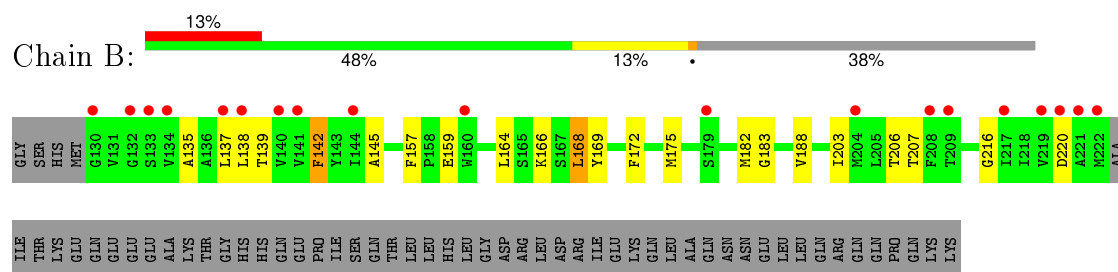
3 Residue-property plots

These plots are drawn for all protein, RNA and DNA chains in the entry. The first graphic for a chain summarises the proportions of errors displayed in the second graphic. The second graphic shows the sequence view annotated by issues in geometry and electron density. Residues are color-coded according to the number of geometric quality criteria for which they contain at least one outlier: green = 0, yellow = 1, orange = 2 and red = 3 or more. A red dot above a residue indicates a poor fit to the electron density ($RSRZ > 2$). Stretches of 2 or more consecutive residues without any outlier are shown as a green connector. Residues present in the sample, but not in the model, are shown in grey.

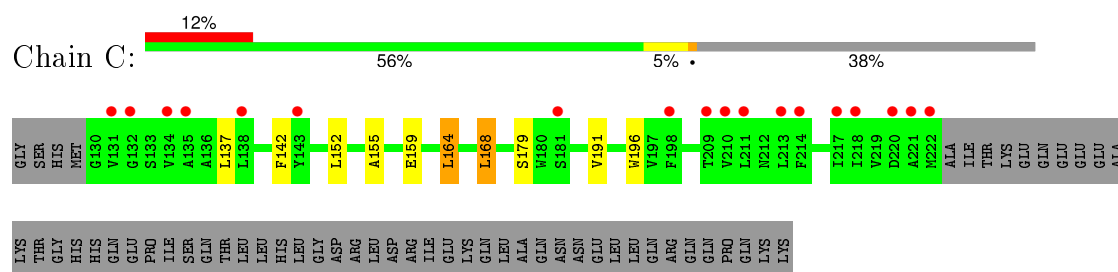
• Molecule 1: ION TRANSPORT PROTEIN



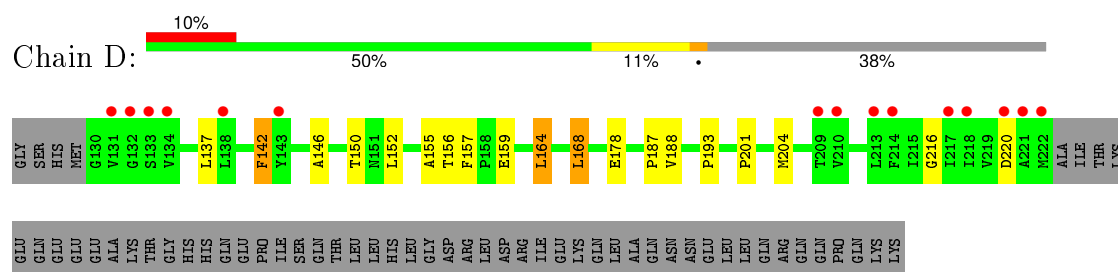
• Molecule 1: ION TRANSPORT PROTEIN



• Molecule 1: ION TRANSPORT PROTEIN



• Molecule 1: ION TRANSPORT PROTEIN



4 Data and refinement statistics

Property	Value	Source
Space group	C 2 2 21	Depositor
Cell constants a, b, c, α , β , γ	79.90 Å 331.70 Å 79.93 Å 90.00° 90.00° 90.00°	Depositor
Resolution (Å)	45.47 – 2.66 45.47 – 2.66	Depositor EDS
% Data completeness (in resolution range)	99.4 (45.47-2.66) 89.6 (45.47-2.66)	Depositor EDS
R_{merge}	0.30	Depositor
R_{sym}	(Not available)	Depositor
$\langle I/\sigma(I) \rangle$ ¹	1.47 (at 2.65 Å)	Xtriage
Refinement program	PHENIX (PHENIX.REFINE)	Depositor
R, R_{free}	0.276 , 0.299 0.283 , 0.312	Depositor DCC
R_{free} test set	1581 reflections (6.01%)	DCC
Wilson B-factor (Å ²)	31.3	Xtriage
Anisotropy	1.223	Xtriage
Bulk solvent k_{sol} (e/Å ³), B_{sol} (Å ²)	0.27 , 56.1	EDS
Estimated twinning fraction	No twinning to report.	Xtriage
L-test for twinning ²	$\langle L \rangle = 0.48$, $\langle L^2 \rangle = 0.31$	Xtriage
Outliers	2 of 30842 reflections (0.006%)	Xtriage
F_o, F_c correlation	0.85	EDS
Total number of atoms	3125	wwPDB-VP
Average B, all atoms (Å ²)	70.0	wwPDB-VP

Xtriage's analysis on translational NCS is as follows: *The analyses of the Patterson function reveals a significant off-origin peak that is 48.33 % of the origin peak, indicating pseudo translational symmetry. The chance of finding a peak of this or larger height randomly in a structure without pseudo translational symmetry is equal to 8.7424e-05. The detected translational NCS is most likely also responsible for the elevated intensity ratio.*

¹ Intensities estimated from amplitudes.

² Theoretical values of $\langle |L| \rangle$, $\langle L^2 \rangle$ for acentric reflections are 0.5, 0.375 respectively for untwinned datasets, and 0.333, 0.2 for perfectly twinned datasets.

5 Model quality [i](#)

5.1 Standard geometry [i](#)

Bond lengths and bond angles in the following residue types are not validated in this section: NA, 2CV

The Z score for a bond length (or angle) is the number of standard deviations the observed value is removed from the expected value. A bond length (or angle) with $|Z| > 5$ is considered an outlier worth inspection. RMSZ is the root-mean-square of all Z scores of the bond lengths (or angles).

Mol	Chain	Bond lengths		Bond angles	
		RMSZ	$\# Z > 5$	RMSZ	$\# Z > 5$
1	A	0.28	0/750	0.46	0/1027
1	B	0.28	0/750	0.48	0/1027
1	C	0.28	0/750	0.48	0/1027
1	D	0.28	0/750	0.49	0/1027
All	All	0.28	0/3000	0.48	0/4108

There are no bond length outliers.

There are no bond angle outliers.

There are no chirality outliers.

There are no planarity outliers.

5.2 Too-close contacts [i](#)

In the following table, the Non-H and H(model) columns list the number of non-hydrogen atoms and hydrogen atoms in the chain respectively. The H(added) column lists the number of hydrogen atoms added and optimized by MolProbity. The Clashes column lists the number of clashes within the asymmetric unit, whereas Symm-Clashes lists symmetry related clashes.

Mol	Chain	Non-H	H(model)	H(added)	Clashes	Symm-Clashes
1	A	728	0	738	15	0
1	B	728	0	738	15	0
1	C	728	0	738	8	0
1	D	728	0	738	13	0
2	A	39	0	56	5	0
2	B	42	0	61	3	0
2	C	18	0	22	2	0
2	D	20	0	29	1	0
3	A	3	0	0	0	0

Continued on next page...

Continued from previous page...

Mol	Chain	Non-H	H(model)	H(added)	Clashes	Symm-Clashes
3	C	3	0	0	0	0
4	A	22	0	0	6	0
4	B	21	0	0	4	0
4	C	22	0	0	3	0
4	D	23	0	0	3	0
All	All	3125	0	3120	52	0

The all-atom clashscore is defined as the number of clashes found per 1000 atoms (including hydrogen atoms). The all-atom clashscore for this structure is 8.

All (52) close contacts within the same asymmetric unit are listed below, sorted by their clash magnitude.

Atom-1	Atom-2	Interatomic distance (Å)	Clash overlap (Å)
1:B:183:GLY:O	4:B:2016:HOH:O	1.93	0.85
1:D:159:GLU:OE2	4:D:2008:HOH:O	1.95	0.84
1:C:196:TRP:HE1	2:C:1201:2CV:H47	1.38	0.69
1:D:201:PRO:HA	1:D:204:MET:HE2	1.83	0.61
1:A:193:PRO:HB2	2:A:1201:2CV:H41	1.84	0.59
1:A:159:GLU:OE2	4:A:2010:HOH:O	2.17	0.58
4:B:2006:HOH:O	1:C:155:ALA:O	2.17	0.58
1:C:159:GLU:OE2	4:C:2011:HOH:O	2.16	0.57
1:C:191:VAL:O	4:C:2021:HOH:O	2.17	0.57
1:D:193:PRO:O	2:D:1201:2CV:O47	2.22	0.56
1:B:182:MET:O	4:B:2015:HOH:O	2.18	0.54
1:A:182:MET:O	4:A:2016:HOH:O	2.18	0.54
1:B:157:PHE:CZ	1:B:188:VAL:HA	2.44	0.52
1:A:142:PHE:HZ	1:A:172:PHE:HA	1.74	0.52
4:A:2008:HOH:O	1:D:155:ALA:O	2.19	0.51
2:A:1201:2CV:H212	1:B:169:TYR:HB2	1.92	0.50
1:A:157:PHE:CZ	1:A:188:VAL:HA	2.46	0.50
1:D:142:PHE:HD1	1:D:168:LEU:HD12	1.78	0.49
1:D:157:PHE:CZ	1:D:188:VAL:HA	2.48	0.49
1:B:142:PHE:HD1	1:B:168:LEU:HD12	1.76	0.49
1:A:164:LEU:HD22	1:A:168:LEU:HD22	1.96	0.48
1:B:142:PHE:HZ	1:B:172:PHE:HA	1.78	0.48
1:A:193:PRO:O	2:A:1201:2CV:O47	2.26	0.48
1:B:159:GLU:OE2	4:B:2010:HOH:O	2.20	0.47
1:A:135:ALA:O	1:A:139:THR:OG1	2.19	0.47
1:A:183:GLY:O	4:A:2017:HOH:O	2.21	0.47
1:A:142:PHE:HD1	1:A:168:LEU:HD12	1.80	0.47
1:B:135:ALA:O	1:B:139:THR:OG1	2.25	0.47

Continued on next page...

Continued from previous page...

Atom-1	Atom-2	Interatomic distance (Å)	Clash overlap (Å)
1:B:138:LEU:O	1:B:142:PHE:HB2	2.14	0.46
4:A:2011:HOH:O	1:D:156:THR:O	2.20	0.46
1:C:152:LEU:O	4:C:2008:HOH:O	2.21	0.45
1:D:152:LEU:O	4:D:2006:HOH:O	2.21	0.45
1:D:146:ALA:O	1:D:150:THR:OG1	2.30	0.45
1:A:187:PRO:HB3	4:A:2018:HOH:O	2.17	0.44
1:C:196:TRP:NE1	2:C:1201:2CV:O47	2.35	0.43
1:B:145:ALA:HB2	2:B:1202:2CV:H01C	2.00	0.43
2:B:1201:2CV:H352	2:B:1201:2CV:H272	1.75	0.43
1:D:164:LEU:HD22	1:D:168:LEU:HD22	2.00	0.43
1:D:187:PRO:O	4:D:2016:HOH:O	2.21	0.43
1:C:179:SER:HA	1:D:178:GLU:OE2	2.19	0.42
2:A:1201:2CV:H601	1:B:166:LYS:HG2	2.02	0.42
1:D:216:GLY:O	1:D:220:ASP:HB2	2.20	0.42
1:A:203:ILE:O	1:A:207:THR:HB	2.20	0.41
1:B:175:MET:SD	1:B:206:THR:HB	2.60	0.41
1:B:216:GLY:O	1:B:220:ASP:HB2	2.20	0.41
1:B:203:ILE:O	1:B:207:THR:HB	2.19	0.41
1:A:196:TRP:HB2	1:A:200:ILE:HD13	2.02	0.41
1:A:163:ASP:HB2	1:A:166:LYS:H	1.84	0.41
1:C:164:LEU:HD22	1:C:168:LEU:HD22	2.03	0.41
2:A:1201:2CV:H181	1:B:168:LEU:HB3	2.03	0.41
1:A:209:THR:O	1:A:213:LEU:N	2.52	0.41
2:B:1201:2CV:H361	2:B:1201:2CV:H602	1.78	0.40

There are no symmetry-related clashes.

5.3 Torsion angles [i](#)

5.3.1 Protein backbone [i](#)

In the following table, the Percentiles column shows the percent Ramachandran outliers of the chain as a percentile score with respect to all X-ray entries followed by that with respect to entries of similar resolution.

The Analysed column shows the number of residues for which the backbone conformation was analysed, and the total number of residues.

Mol	Chain	Analysed	Favoured	Allowed	Outliers	Percentiles
1	A	91/149 (61%)	89 (98%)	2 (2%)	0	100 100

Continued on next page...

Continued from previous page...

Mol	Chain	Analysed	Favoured	Allowed	Outliers	Percentiles	
1	B	91/149 (61%)	88 (97%)	3 (3%)	0	100	100
1	C	91/149 (61%)	90 (99%)	1 (1%)	0	100	100
1	D	91/149 (61%)	90 (99%)	1 (1%)	0	100	100
All	All	364/596 (61%)	357 (98%)	7 (2%)	0	100	100

There are no Ramachandran outliers to report.

5.3.2 Protein sidechains ⓘ

In the following table, the Percentiles column shows the percent sidechain outliers of the chain as a percentile score with respect to all X-ray entries followed by that with respect to entries of similar resolution.

The Analysed column shows the number of residues for which the sidechain conformation was analysed, and the total number of residues.

Mol	Chain	Analysed	Rotameric	Outliers	Percentiles	
1	A	79/129 (61%)	75 (95%)	4 (5%)	29	55
1	B	79/129 (61%)	75 (95%)	4 (5%)	29	55
1	C	79/129 (61%)	75 (95%)	4 (5%)	29	55
1	D	79/129 (61%)	75 (95%)	4 (5%)	29	55
All	All	316/516 (61%)	300 (95%)	16 (5%)	29	55

All (16) residues with a non-rotameric sidechain are listed below:

Mol	Chain	Res	Type
1	A	137	LEU
1	A	142	PHE
1	A	164	LEU
1	A	168	LEU
1	B	137	LEU
1	B	142	PHE
1	B	164	LEU
1	B	168	LEU
1	C	137	LEU
1	C	142	PHE
1	C	164	LEU
1	C	168	LEU
1	D	137	LEU

Continued on next page...

Continued from previous page...

Mol	Chain	Res	Type
1	D	142	PHE
1	D	164	LEU
1	D	168	LEU

Some sidechains can be flipped to improve hydrogen bonding and reduce clashes. All (1) such sidechains are listed below:

Mol	Chain	Res	Type
1	A	194	ASN

5.3.3 RNA [i](#)

There are no RNA molecules in this entry.

5.4 Non-standard residues in protein, DNA, RNA chains [i](#)

There are no non-standard protein/DNA/RNA residues in this entry.

5.5 Carbohydrates [i](#)

There are no carbohydrates in this entry.

5.6 Ligand geometry [i](#)

Of 12 ligands modelled in this entry, 6 are monoatomic - leaving 6 for Mogul analysis.

In the following table, the Counts columns list the number of bonds (or angles) for which Mogul statistics could be retrieved, the number of bonds (or angles) that are observed in the model and the number of bonds (or angles) that are defined in the chemical component dictionary. The Link column lists molecule types, if any, to which the group is linked. The Z score for a bond length (or angle) is the number of standard deviations the observed value is removed from the expected value. A bond length (or angle) with $|Z| > 2$ is considered an outlier worth inspection. RMSZ is the root-mean-square of all Z scores of the bond lengths (or angles).

Mol	Type	Chain	Res	Link	Bond lengths			Bond angles		
					Counts	RMSZ	$\# Z > 2$	Counts	RMSZ	$\# Z > 2$
2	2CV	A	1201	-	25,25,25	0.17	0	29,30,30	0.51	1 (3%)
2	2CV	A	1202	-	12,12,25	0.22	0	12,12,30	0.24	0
2	2CV	B	1201	-	25,25,25	0.19	0	29,30,30	0.29	0
2	2CV	B	1202	-	15,15,25	0.16	0	15,16,30	0.47	0

Mol	Type	Chain	Res	Link	Bond lengths			Bond angles		
					Counts	RMSZ	# Z > 2	Counts	RMSZ	# Z > 2
2	2CV	C	1201	-	17,17,25	0.21	0	17,19,30	0.48	0
2	2CV	D	1201	-	19,19,25	0.17	0	19,21,30	0.47	0

In the following table, the Chirals column lists the number of chiral outliers, the number of chiral centers analysed, the number of these observed in the model and the number defined in the chemical component dictionary. Similar counts are reported in the Torsion and Rings columns. '-' means no outliers of that kind were identified.

Mol	Type	Chain	Res	Link	Chirals	Torsions	Rings
2	2CV	A	1201	-	-	0/34/34/34	0/0/0/0
2	2CV	A	1202	-	-	0/11/11/34	0/0/0/0
2	2CV	B	1201	-	-	0/34/34/34	0/0/0/0
2	2CV	B	1202	-	-	0/16/16/34	0/0/0/0
2	2CV	C	1201	-	-	0/20/20/34	0/0/0/0
2	2CV	D	1201	-	-	0/22/22/34	0/0/0/0

There are no bond length outliers.

All (1) bond angle outliers are listed below:

Mol	Chain	Res	Type	Atoms	Z	Observed(°)	Ideal(°)
2	A	1201	2CV	C35-N33-C36	2.17	117.56	115.45

There are no chirality outliers.

There are no torsion outliers.

There are no ring outliers.

5 monomers are involved in 11 short contacts:

Mol	Chain	Res	Type	Clashes	Symm-Clashes
2	A	1201	2CV	5	0
2	B	1201	2CV	2	0
2	B	1202	2CV	1	0
2	C	1201	2CV	2	0
2	D	1201	2CV	1	0

5.7 Other polymers ⓘ

There are no such residues in this entry.

5.8 Polymer linkage issues ⓘ

There are no chain breaks in this entry.

6 Fit of model and data

6.1 Protein, DNA and RNA chains

In the following table, the column labelled ‘#RSRZ> 2’ contains the number (and percentage) of RSRZ outliers, followed by percent RSRZ outliers for the chain as percentile scores relative to all X-ray entries and entries of similar resolution. The OWAB column contains the minimum, median, 95th percentile and maximum values of the occupancy-weighted average B-factor per residue. The column labelled ‘Q< 0.9’ lists the number of (and percentage) of residues with an average occupancy less than 0.9.

Mol	Chain	Analysed	<RSRZ>	#RSRZ>2	OWAB(Å ²)	Q<0.9
1	A	93/149 (62%)	1.28	19 (20%) 1 1	38, 58, 134, 157	0
1	B	93/149 (62%)	1.25	19 (20%) 1 1	37, 56, 137, 168	0
1	C	93/149 (62%)	1.25	18 (19%) 1 1	41, 56, 143, 168	0
1	D	93/149 (62%)	1.23	15 (16%) 3 1	38, 57, 143, 169	0
All	All	372/596 (62%)	1.25	71 (19%) 2 1	37, 57, 143, 169	0

All (71) RSRZ outliers are listed below:

Mol	Chain	Res	Type	RSRZ
1	D	214	PHE	7.3
1	C	214	PHE	7.1
1	C	222	MET	6.2
1	D	132	GLY	6.1
1	A	134	VAL	6.1
1	B	134	VAL	5.7
1	D	218	ILE	5.6
1	D	138	LEU	5.2
1	D	213	LEU	5.1
1	C	210	VAL	5.1
1	A	222	MET	5.0
1	D	222	MET	5.0
1	B	222	MET	4.9
1	D	217	ILE	4.8
1	D	131	VAL	4.7
1	A	208	PHE	4.7
1	C	132	GLY	4.6
1	B	220	ASP	4.6
1	C	217	ILE	4.6
1	C	213	LEU	4.3
1	B	221	ALA	4.3

Continued on next page...

Continued from previous page...

Mol	Chain	Res	Type	RSRZ
1	B	132	GLY	4.2
1	B	133	SER	4.2
1	A	220	ASP	4.1
1	C	138	LEU	4.0
1	C	131	VAL	3.8
1	A	132	GLY	3.7
1	B	130	GLY	3.7
1	B	208	PHE	3.7
1	C	220	ASP	3.6
1	A	209	THR	3.5
1	A	144	ILE	3.4
1	A	221	ALA	3.4
1	B	140	VAL	3.2
1	D	221	ALA	3.2
1	A	204	MET	3.2
1	D	220	ASP	3.1
1	C	218	ILE	3.1
1	B	144	ILE	3.0
1	A	140	VAL	3.0
1	C	143	TYR	3.0
1	A	133	SER	3.0
1	D	210	VAL	2.9
1	D	143	TYR	2.9
1	A	137	LEU	2.8
1	B	219	VAL	2.8
1	A	219	VAL	2.8
1	A	138	LEU	2.8
1	A	130	GLY	2.8
1	D	134	VAL	2.7
1	C	134	VAL	2.6
1	C	209	THR	2.5
1	D	209	THR	2.5
1	A	160	TRP	2.5
1	A	141	VAL	2.4
1	C	211	LEU	2.4
1	C	135	ALA	2.4
1	B	137	LEU	2.3
1	C	221	ALA	2.3
1	A	217	ILE	2.3
1	B	204	MET	2.2
1	B	209	THR	2.2
1	B	160	TRP	2.2

Continued on next page...

Continued from previous page...

Mol	Chain	Res	Type	RSRZ
1	B	138	LEU	2.2
1	B	179	SER	2.2
1	C	198	PHE	2.2
1	D	133	SER	2.1
1	B	217	ILE	2.1
1	B	141	VAL	2.0
1	A	136	ALA	2.0
1	C	181	SER	2.0

6.2 Non-standard residues in protein, DNA, RNA chains ⓘ

There are no non-standard protein/DNA/RNA residues in this entry.

6.3 Carbohydrates ⓘ

There are no carbohydrates in this entry.

6.4 Ligands ⓘ

In the following table, the Atoms column lists the number of modelled atoms in the group and the number defined in the chemical component dictionary. LLDF column lists the quality of electron density of the group with respect to its neighbouring residues in protein, DNA or RNA chains. The B-factors column lists the minimum, median, 95th percentile and maximum values of B factors of atoms in the group. The column labelled 'Q< 0.9' lists the number of atoms with occupancy less than 0.9.

Mol	Type	Chain	Res	Atoms	RSCC	RSR	LLDF	B-factors(Å ²)	Q<0.9
2	2CV	B	1202	16/26	0.67	0.58	9.18	79,83,98,103	0
2	2CV	A	1202	13/26	0.70	0.50	5.25	63,80,83,88	0
2	2CV	B	1201	26/26	0.80	0.40	3.28	55,76,98,103	0
2	2CV	A	1201	26/26	0.80	0.38	2.46	49,70,106,111	0
2	2CV	D	1201	20/26	0.82	0.28	2.14	43,75,91,100	0
2	2CV	C	1201	18/26	0.87	0.25	0.47	40,75,94,95	0
3	NA	A	1301	1/1	0.95	0.96	-	89,89,89,89	1
3	NA	A	1303	1/1	0.60	2.25	-	79,79,79,79	1
3	NA	C	1303	1/1	0.94	0.77	-	77,77,77,77	1
3	NA	C	1301	1/1	0.33	0.89	-	70,70,70,70	1
3	NA	C	1302	1/1	0.87	0.41	-	51,51,51,51	1
3	NA	A	1302	1/1	0.95	1.04	-	91,91,91,91	1

6.5 Other polymers [i](#)

There are no such residues in this entry.