



wwPDB X-ray Structure Validation Summary Report ⓘ

Feb 1, 2016 – 07:50 AM GMT

PDB ID : 3CCZ
Title : Thermodynamic and structure guided design of statin hmg-coa reductase inhibitors
Authors : Pavlovsky, A.; Sarver, R.W.; Harris, M.S.; Finzel, B.C.
Deposited on : 2008-02-26
Resolution : 1.70 Å(reported)

This is a wwPDB X-ray Structure Validation Summary Report for a publicly released PDB entry.
We welcome your comments at validation@mail.wwpdb.org
A user guide is available at
<http://wwpdb.org/validation/2016/XrayValidationReportHelp>
with specific help available everywhere you see the ⓘ symbol.

The following versions of software and data (see [references ⓘ](#)) were used in the production of this report:

MolProbity : 4.02b-467
Mogul : 1.7 (RC4), CSD as536be (2015)
Xtriage (Phenix) : 1.9-1692
EDS : rb-20026688
Percentile statistics : 20151230.v01 (using entries in the PDB archive December 30th 2015)
Refmac : 5.8.0135
CCP4 : 6.5.0
Ideal geometry (proteins) : Engh & Huber (2001)
Ideal geometry (DNA, RNA) : Parkinson et al. (1996)
Validation Pipeline (wwPDB-VP) : trunk26865

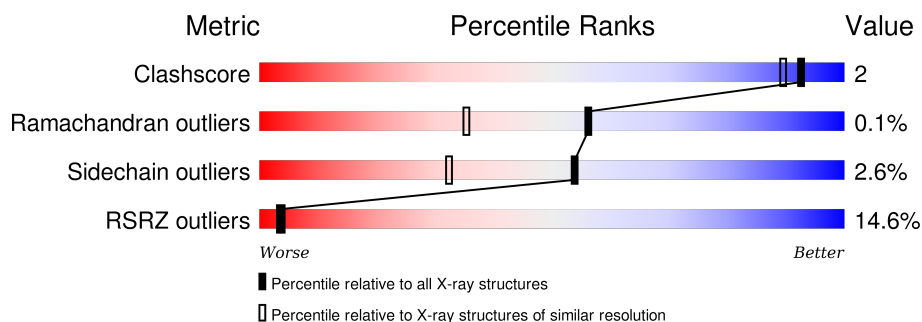
1 Overall quality at a glance

The following experimental techniques were used to determine the structure:

X-RAY DIFFRACTION

The reported resolution of this entry is 1.70 Å.

Percentile scores (ranging between 0-100) for global validation metrics of the entry are shown in the following graphic. The table shows the number of entries on which the scores are based.



Metric	Whole archive (#Entries)	Similar resolution (#Entries, resolution range(Å))
Clashscore	102246	3585 (1.70-1.70)
Ramachandran outliers	100387	3527 (1.70-1.70)
Sidechain outliers	100360	3527 (1.70-1.70)
RSRZ outliers	91569	3200 (1.70-1.70)

The table below summarises the geometric issues observed across the polymeric chains and their fit to the electron density. The red, orange, yellow and green segments on the lower bar indicate the fraction of residues that contain outliers for ≥ 3 , 2, 1 and 0 types of geometric quality criteria. A grey segment represents the fraction of residues that are not modelled. The numeric value for each fraction is indicated below the corresponding segment, with a dot representing fractions $\leq 5\%$. The upper red bar (where present) indicates the fraction of residues that have poor fit to the electron density. The numeric value is given above the bar.

Mol	Chain	Length	Quality of chain
1	A	441	<div> <div>14%</div> <div>91%</div> <div>5%</div> </div>
1	B	441	<div> <div>15%</div> <div>87%</div> <div>5%</div> <div>8%</div> </div>
1	C	441	<div> <div>14%</div> <div>87%</div> <div>8%</div> </div>
1	D	441	<div> <div>11%</div> <div>84%</div> <div>5%</div> <div>11%</div> </div>

The following table lists non-polymeric compounds, carbohydrate monomers and non-standard residues in protein, DNA, RNA chains that are outliers for geometric or electron-density-fit criteria:

Mol	Type	Chain	Res	Chirality	Geometry	Clashes	Electron density
2	SO4	A	1	-	-	-	X
2	SO4	B	2	-	-	-	X
2	SO4	C	3	-	-	-	X
2	SO4	D	4	-	-	-	X

2 Entry composition [i](#)

There are 4 unique types of molecules in this entry. The entry contains 13469 atoms, of which 0 are hydrogens and 0 are deuteriums.

In the tables below, the ZeroOcc column contains the number of atoms modelled with zero occupancy, the AltConf column contains the number of residues with at least one atom in alternate conformation and the Trace column contains the number of residues modelled with at most 2 atoms.

- Molecule 1 is a protein called 3-hydroxy-3-methylglutaryl-coenzyme A reductase.

Mol	Chain	Residues	Atoms					ZeroOcc	AltConf	Trace
1	A	420	Total	C	N	O	S	0	3	0
			3128	1946	549	601	32			
1	B	405	Total	C	N	O	S	0	3	0
			3014	1874	529	580	31			
1	C	404	Total	C	N	O	S	0	3	0
			2997	1862	524	579	32			
1	D	394	Total	C	N	O	S	0	4	0
			2922	1815	512	565	30			

There are 28 discrepancies between the modelled and reference sequences:

Chain	Residue	Modelled	Actual	Comment	Reference
A	435	HIS	-	expression tag	UNP P04035
A	436	HIS	-	expression tag	UNP P04035
A	437	HIS	-	expression tag	UNP P04035
A	438	HIS	-	expression tag	UNP P04035
A	439	HIS	-	expression tag	UNP P04035
A	440	HIS	-	expression tag	UNP P04035
A	485	ILE	MET	engineered	UNP P04035
B	435	HIS	-	expression tag	UNP P04035
B	436	HIS	-	expression tag	UNP P04035
B	437	HIS	-	expression tag	UNP P04035
B	438	HIS	-	expression tag	UNP P04035
B	439	HIS	-	expression tag	UNP P04035
B	440	HIS	-	expression tag	UNP P04035
B	485	ILE	MET	engineered	UNP P04035
C	435	HIS	-	expression tag	UNP P04035
C	436	HIS	-	expression tag	UNP P04035
C	437	HIS	-	expression tag	UNP P04035
C	438	HIS	-	expression tag	UNP P04035
C	439	HIS	-	expression tag	UNP P04035
C	440	HIS	-	expression tag	UNP P04035
C	485	ILE	MET	engineered	UNP P04035

Continued on next page...

Continued from previous page...

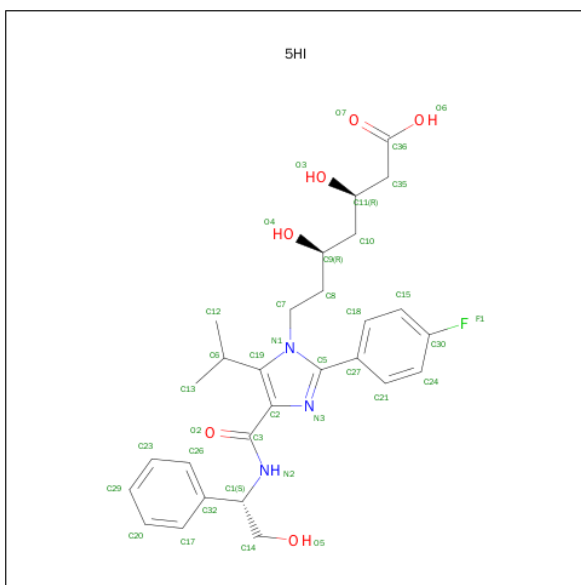
Chain	Residue	Modelled	Actual	Comment	Reference
D	435	HIS	-	expression tag	UNP P04035
D	436	HIS	-	expression tag	UNP P04035
D	437	HIS	-	expression tag	UNP P04035
D	438	HIS	-	expression tag	UNP P04035
D	439	HIS	-	expression tag	UNP P04035
D	440	HIS	-	expression tag	UNP P04035
D	485	ILE	MET	engineered	UNP P04035

- Molecule 2 is SULFATE ION (three-letter code: SO4) (formula: O₄S).



Mol	Chain	Residues	Atoms			ZeroOcc	AltConf
2	A	1	Total	O	S	0	0
			5	4	1		
2	B	1	Total	O	S	0	0
			5	4	1		
2	C	1	Total	O	S	0	0
			5	4	1		
2	D	1	Total	O	S	0	0
			5	4	1		

- Molecule 3 is (3R,5R)-7-[2-(4-FLUOROPHENYL)-4-{[(1S)-2-HYDROXY-1-PHENYLETHYL]CARBAMOYL}-5-(1-METHYLETHYL)-1H-IMIDAZOL-1-YL]-3,5-DIHYDROXYHEPTANOIC ACID (three-letter code: 5HI) (formula: C₂₈H₃₄FN₃O₆).

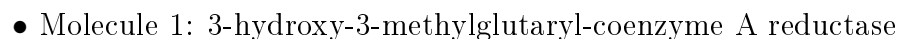
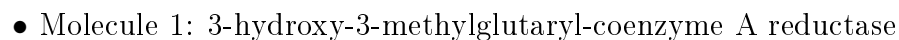


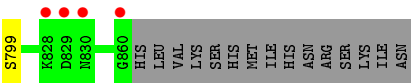
Mol	Chain	Residues	Atoms					ZeroOcc	AltConf
3	A	1	Total	C	F	N	O	0	0
			38	28	1	3	6		
3	B	1	Total	C	F	N	O	0	0
			38	28	1	3	6		
3	C	1	Total	C	F	N	O	0	0
			38	28	1	3	6		
3	D	1	Total	C	F	N	O	0	0
			38	28	1	3	6		

- Molecule 4 is water.

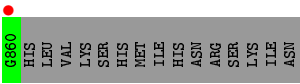
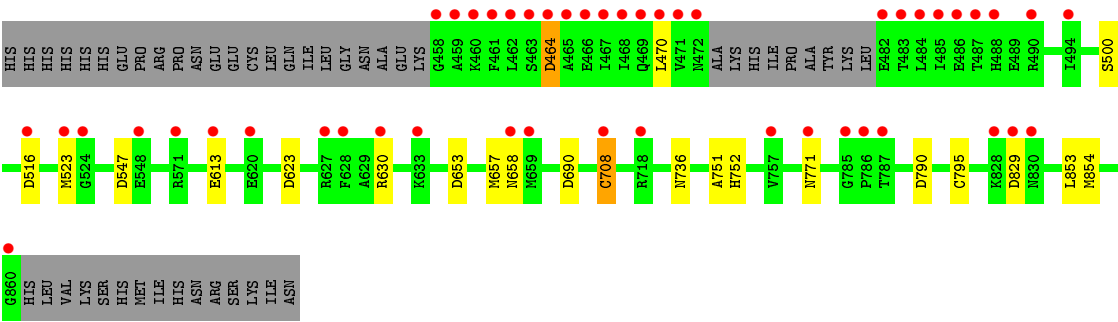
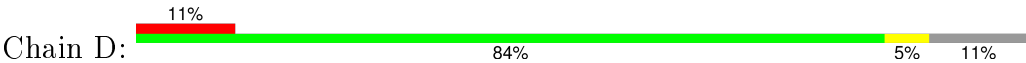
Mol	Chain	Residues	Atoms		ZeroOcc	AltConf
4	A	335	Total	O	0	0
			335	335		
4	B	316	Total	O	0	0
			316	316		
4	C	293	Total	O	0	0
			293	293		
4	D	292	Total	O	0	0
			292	292		

- Molecule 1: 3-hydroxy-3-methylglutaryl-coenzyme A reductase





● Molecule 1: 3-hydroxy-3-methylglutaryl-coenzyme A reductase



4 Data and refinement statistics

Property	Value	Source
Space group	P 1 21 1	Depositor
Cell constants a, b, c, α , β , γ	82.86Å 135.66Å 83.15Å 90.00° 97.16° 90.00°	Depositor
Resolution (Å)	50.00 – 1.70 41.11 – 1.70	Depositor EDS
% Data completeness (in resolution range)	93.6 (50.00-1.70) 91.0 (41.11-1.70)	Depositor EDS
R_{merge}	0.04	Depositor
R_{sym}	(Not available)	Depositor
$\langle I/\sigma(I) \rangle$ ¹	8.03 (at 1.70Å)	Xtriage
Refinement program	REFMAC 5.1.24	Depositor
R, R_{free}	0.232 , 0.257 0.237 , (Not available)	Depositor DCC
R_{free} test set	No test flags present.	DCC
Wilson B-factor (Å ²)	20.2	Xtriage
Anisotropy	0.162	Xtriage
Bulk solvent k_{sol} (e/Å ³), B_{sol} (Å ²)	0.39 , 46.3	EDS
Estimated twinning fraction	0.049 for l,-k,h	Xtriage
L-test for twinning ²	$\langle L \rangle = 0.50$, $\langle L^2 \rangle = 0.34$	Xtriage
Outliers	0 of 186805 reflections	Xtriage
F_o, F_c correlation	0.93	EDS
Total number of atoms	13469	wwPDB-VP
Average B, all atoms (Å ²)	29.0	wwPDB-VP

Xtriage's analysis on translational NCS is as follows: *The largest off-origin peak in the Patterson function is 3.65% of the height of the origin peak. No significant pseudotranslation is detected.*

¹Intensities estimated from amplitudes.

²Theoretical values of $\langle |L| \rangle$, $\langle L^2 \rangle$ for acentric reflections are 0.5, 0.375 respectively for untwinned datasets, and 0.333, 0.2 for perfectly twinned datasets.

5 Model quality [i](#)

5.1 Standard geometry [i](#)

Bond lengths and bond angles in the following residue types are not validated in this section: SO4, 5HI

The Z score for a bond length (or angle) is the number of standard deviations the observed value is removed from the expected value. A bond length (or angle) with $|Z| > 5$ is considered an outlier worth inspection. RMSZ is the root-mean-square of all Z scores of the bond lengths (or angles).

Mol	Chain	Bond lengths		Bond angles	
		RMSZ	$\# Z > 5$	RMSZ	$\# Z > 5$
1	A	0.26	0/3188	0.57	10/4310 (0.2%)
1	B	0.26	0/3069	0.56	10/4146 (0.2%)
1	C	0.25	0/3051	0.57	8/4121 (0.2%)
1	D	0.26	0/2981	0.57	8/4028 (0.2%)
All	All	0.26	0/12289	0.57	36/16605 (0.2%)

There are no bond length outliers.

The worst 5 of 36 bond angle outliers are listed below:

Mol	Chain	Res	Type	Atoms	Z	Observed(°)	Ideal(°)
1	B	547	ASP	CB-CG-OD2	5.65	123.39	118.30
1	A	547	ASP	CB-CG-OD2	5.62	123.35	118.30
1	C	547	ASP	CB-CG-OD2	5.61	123.35	118.30
1	D	547	ASP	CB-CG-OD2	5.48	123.23	118.30
1	A	790	ASP	CB-CG-OD2	5.48	123.23	118.30

There are no chirality outliers.

There are no planarity outliers.

5.2 Too-close contacts [i](#)

In the following table, the Non-H and H(model) columns list the number of non-hydrogen atoms and hydrogen atoms in the chain respectively. The H(added) column lists the number of hydrogen atoms added and optimized by MolProbity. The Clashes column lists the number of clashes within the asymmetric unit, whereas Symm-Clashes lists symmetry related clashes.

Mol	Chain	Non-H	H(model)	H(added)	Clashes	Symm-Clashes
1	A	3128	0	3164	22	0
1	B	3014	0	3050	22	0

Continued on next page...

Continued from previous page...

Mol	Chain	Non-H	H(model)	H(added)	Clashes	Symm-Clashes
1	C	2997	0	3026	16	0
1	D	2922	0	2953	19	0
2	A	5	0	0	0	0
2	B	5	0	0	0	0
2	C	5	0	0	0	0
2	D	5	0	0	0	0
3	A	38	0	33	0	0
3	B	38	0	33	1	0
3	C	38	0	33	1	0
3	D	38	0	33	0	0
4	A	335	0	0	0	0
4	B	316	0	0	0	0
4	C	293	0	0	0	0
4	D	292	0	0	0	0
All	All	13469	0	12325	49	0

The all-atom clashscore is defined as the number of clashes found per 1000 atoms (including hydrogen atoms). The all-atom clashscore for this structure is 2.

The worst 5 of 49 close contacts within the same asymmetric unit are listed below, sorted by their clash magnitude.

Atom-1	Atom-2	Interatomic distance (Å)	Clash overlap (Å)
1:A:771[B]:ASN:OD1	1:B:771[B]:ASN:ND2	1.69	1.25
1:C:771[B]:ASN:HD21	1:D:771[B]:ASN:CG	1.44	1.21
1:A:771[B]:ASN:ND2	1:B:771[B]:ASN:OD1	1.75	1.17
1:C:771[B]:ASN:ND2	1:D:771[B]:ASN:OD1	1.76	1.16
1:A:771[B]:ASN:CG	1:B:771[B]:ASN:HD21	1.68	0.95

There are no symmetry-related clashes.

5.3 Torsion angles [i](#)

5.3.1 Protein backbone [i](#)

In the following table, the Percentiles column shows the percent Ramachandran outliers of the chain as a percentile score with respect to all X-ray entries followed by that with respect to entries of similar resolution.

The Analysed column shows the number of residues for which the backbone conformation was analysed, and the total number of residues.

Mol	Chain	Analysed	Favoured	Allowed	Outliers	Percentiles	
1	A	421/441 (96%)	405 (96%)	16 (4%)	0	100	100
1	B	402/441 (91%)	390 (97%)	11 (3%)	1 (0%)	52	32
1	C	401/441 (91%)	387 (96%)	14 (4%)	0	100	100
1	D	394/441 (89%)	382 (97%)	12 (3%)	0	100	100
All	All	1618/1764 (92%)	1564 (97%)	53 (3%)	1 (0%)	56	35

All (1) Ramachandran outliers are listed below:

Mol	Chain	Res	Type
1	B	525	ALA

5.3.2 Protein sidechains ⓘ

In the following table, the Percentiles column shows the percent sidechain outliers of the chain as a percentile score with respect to all X-ray entries followed by that with respect to entries of similar resolution.

The Analysed column shows the number of residues for which the sidechain conformation was analysed, and the total number of residues.

Mol	Chain	Analysed	Rotameric	Outliers	Percentiles	
1	A	337/355 (95%)	329 (98%)	8 (2%)	57	36
1	B	326/355 (92%)	318 (98%)	8 (2%)	55	34
1	C	324/355 (91%)	315 (97%)	9 (3%)	51	29
1	D	316/355 (89%)	304 (96%)	12 (4%)	40	17
All	All	1303/1420 (92%)	1266 (97%)	37 (3%)	54	29

5 of 37 residues with a non-rotameric sidechain are listed below:

Mol	Chain	Res	Type
1	C	482	GLU
1	C	630	ARG
1	D	708[A]	CYS
1	C	486	GLU
1	C	523	MET

Some sidechains can be flipped to improve hydrogen bonding and reduce clashes. All (5) such sidechains are listed below:

Mol	Chain	Res	Type
1	A	454	ASN
1	A	819	GLN
1	B	819	GLN
1	C	632	GLN
1	C	819	GLN

5.3.3 RNA [i](#)

There are no RNA molecules in this entry.

5.4 Non-standard residues in protein, DNA, RNA chains [i](#)

There are no non-standard protein/DNA/RNA residues in this entry.

5.5 Carbohydrates [i](#)

There are no carbohydrates in this entry.

5.6 Ligand geometry [i](#)

8 ligands are modelled in this entry.

In the following table, the Counts columns list the number of bonds (or angles) for which Mogul statistics could be retrieved, the number of bonds (or angles) that are observed in the model and the number of bonds (or angles) that are defined in the chemical component dictionary. The Link column lists molecule types, if any, to which the group is linked. The Z score for a bond length (or angle) is the number of standard deviations the observed value is removed from the expected value. A bond length (or angle) with $|Z| > 2$ is considered an outlier worth inspection. RMSZ is the root-mean-square of all Z scores of the bond lengths (or angles).

Mol	Type	Chain	Res	Link	Bond lengths			Bond angles		
					Counts	RMSZ	$\# Z > 2$	Counts	RMSZ	$\# Z > 2$
2	SO4	A	1	-	4,4,4	0.25	0	6,6,6	0.10	0
3	5HI	A	876	-	33,40,40	0.62	0	40,55,55	1.26	4 (10%)
2	SO4	B	2	-	4,4,4	0.24	0	6,6,6	0.08	0
3	5HI	B	876	-	33,40,40	0.63	0	40,55,55	1.42	4 (10%)
2	SO4	C	3	-	4,4,4	0.25	0	6,6,6	0.10	0
3	5HI	C	876	-	33,40,40	0.63	0	40,55,55	1.39	6 (15%)
2	SO4	D	4	-	4,4,4	0.25	0	6,6,6	0.08	0
3	5HI	D	876	-	33,40,40	0.62	1 (3%)	40,55,55	1.46	4 (10%)

In the following table, the Chirals column lists the number of chiral outliers, the number of chiral centers analysed, the number of these observed in the model and the number defined in the chemical component dictionary. Similar counts are reported in the Torsion and Rings columns. '-' means no outliers of that kind were identified.

Mol	Type	Chain	Res	Link	Chirals	Torsions	Rings
2	SO4	A	1	-	-	0/0/0/0	0/0/0/0
3	5HI	A	876	-	-	0/30/35/35	0/3/3/3
2	SO4	B	2	-	-	0/0/0/0	0/0/0/0
3	5HI	B	876	-	-	0/30/35/35	0/3/3/3
2	SO4	C	3	-	-	0/0/0/0	0/0/0/0
3	5HI	C	876	-	-	0/30/35/35	0/3/3/3
2	SO4	D	4	-	-	0/0/0/0	0/0/0/0
3	5HI	D	876	-	-	0/30/35/35	0/3/3/3

All (1) bond length outliers are listed below:

Mol	Chain	Res	Type	Atoms	Z	Observed(Å)	Ideal(Å)
3	D	876	5HI	C32-C1	-2.06	1.49	1.52

The worst 5 of 18 bond angle outliers are listed below:

Mol	Chain	Res	Type	Atoms	Z	Observed(°)	Ideal(°)
3	B	876	5HI	C8-C7-N1	-5.41	107.72	112.29
3	D	876	5HI	C8-C7-N1	-5.29	107.82	112.29
3	C	876	5HI	C8-C7-N1	-5.19	107.91	112.29
3	A	876	5HI	C8-C7-N1	-4.27	108.69	112.29
3	D	876	5HI	C14-C1-N2	-4.12	103.66	109.35

There are no chirality outliers.

There are no torsion outliers.

There are no ring outliers.

2 monomers are involved in 2 short contacts:

Mol	Chain	Res	Type	Clashes	Symm-Clashes
3	B	876	5HI	1	0
3	C	876	5HI	1	0

5.7 Other polymers

There are no such residues in this entry.

5.8 Polymer linkage issues ⓘ

There are no chain breaks in this entry.

6 Fit of model and data [i](#)

6.1 Protein, DNA and RNA chains [i](#)

In the following table, the column labelled ‘#RSRZ> 2’ contains the number (and percentage) of RSRZ outliers, followed by percent RSRZ outliers for the chain as percentile scores relative to all X-ray entries and entries of similar resolution. The OWAB column contains the minimum, median, 95th percentile and maximum values of the occupancy-weighted average B-factor per residue. The column labelled ‘Q< 0.9’ lists the number of (and percentage) of residues with an average occupancy less than 0.9.

Mol	Chain	Analysed	<RSRZ>	#RSRZ>2	OWAB(Å ²)	Q<0.9
1	A	420/441 (95%)	1.11	62 (14%) 3 3	15, 24, 54, 79	0
1	B	405/441 (91%)	1.15	65 (16%) 3 3	14, 24, 80, 99	0
1	C	404/441 (91%)	1.28	62 (15%) 3 3	14, 23, 80, 96	0
1	D	394/441 (89%)	1.08	48 (12%) 5 6	14, 24, 59, 93	0
All	All	1623/1764 (92%)	1.16	237 (14%) 3 4	14, 23, 69, 99	0

The worst 5 of 237 RSRZ outliers are listed below:

Mol	Chain	Res	Type	RSRZ
1	C	461	PHE	12.9
1	B	461	PHE	12.5
1	D	484	LEU	12.0
1	D	461	PHE	11.9
1	D	458	GLY	11.8

6.2 Non-standard residues in protein, DNA, RNA chains [i](#)

There are no non-standard protein/DNA/RNA residues in this entry.

6.3 Carbohydrates [i](#)

There are no carbohydrates in this entry.

6.4 Ligands [i](#)

In the following table, the Atoms column lists the number of modelled atoms in the group and the number defined in the chemical component dictionary. LLDF column lists the quality of electron density of the group with respect to its neighbouring residues in protein, DNA or RNA chains. The B-factors column lists the minimum, median, 95th percentile and maximum values of B factors

of atoms in the group. The column labelled 'Q< 0.9' lists the number of atoms with occupancy less than 0.9.

Mol	Type	Chain	Res	Atoms	RSCC	RSR	LLDF	B-factors(\AA^2)	Q<0.9
2	SO4	B	2	5/5	0.70	0.24	5.01	81,81,81,81	0
2	SO4	C	3	5/5	0.76	0.28	4.30	70,70,70,70	0
2	SO4	A	1	5/5	0.66	0.26	3.23	77,77,77,77	0
2	SO4	D	4	5/5	0.75	0.24	2.74	69,69,69,69	0
3	5HI	B	876	38/38	0.86	0.15	1.45	21,29,30,30	0
3	5HI	A	876	38/38	0.87	0.15	0.68	19,25,27,29	0
3	5HI	C	876	38/38	0.86	0.14	0.64	20,27,29,30	0
3	5HI	D	876	38/38	0.86	0.13	0.63	21,27,28,29	0

6.5 Other polymers [i](#)

There are no such residues in this entry.