



Full wwPDB X-ray Structure Validation Report ⓘ

Feb 1, 2016 – 07:51 AM GMT

PDB ID : 3CD7
Title : Thermodynamic and structure guided design of statin hmg-coa reductase inhibitors
Authors : Pavlovsky, A.; Sarver, R.W.; Harris, M.S.; Finzel, B.C.
Deposited on : 2008-02-26
Resolution : 2.05 Å(reported)

This is a Full wwPDB X-ray Structure Validation Report for a publicly released PDB entry.
We welcome your comments at validation@mail.wwpdb.org
A user guide is available at
<http://wwpdb.org/validation/2016/XrayValidationReportHelp>
with specific help available everywhere you see the ⓘ symbol.

The following versions of software and data (see [references ⓘ](#)) were used in the production of this report:

MolProbity : 4.02b-467
Mogul : 1.7 (RC4), CSD as536be (2015)
Xtriage (Phenix) : 1.9-1692
EDS : rb-20026688
Percentile statistics : 20151230.v01 (using entries in the PDB archive December 30th 2015)
Refmac : 5.8.0135
CCP4 : 6.5.0
Ideal geometry (proteins) : Engh & Huber (2001)
Ideal geometry (DNA, RNA) : Parkinson et al. (1996)
Validation Pipeline (wwPDB-VP) : trunk26865

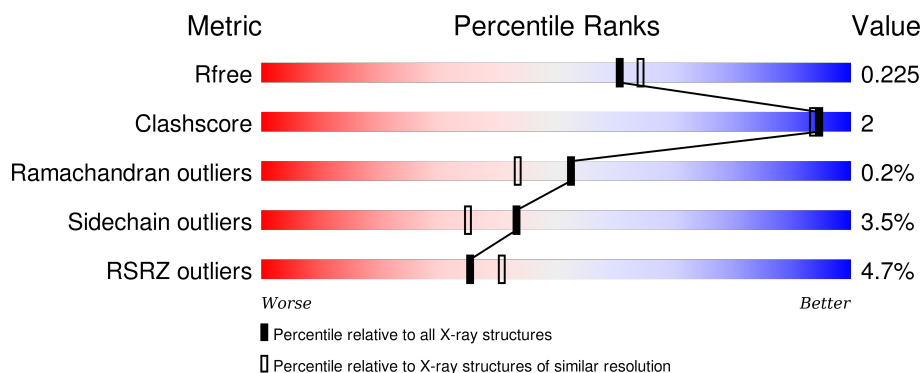
1 Overall quality at a glance

The following experimental techniques were used to determine the structure:

X-RAY DIFFRACTION

The reported resolution of this entry is 2.05 Å.

Percentile scores (ranging between 0-100) for global validation metrics of the entry are shown in the following graphic. The table shows the number of entries on which the scores are based.



Metric	Whole archive (#Entries)	Similar resolution (#Entries, resolution range(Å))
R_{free}	91344	1192 (2.04-2.04)
Clashscore	102246	1269 (2.04-2.04)
Ramachandran outliers	100387	1258 (2.04-2.04)
Sidechain outliers	100360	1258 (2.04-2.04)
RSRZ outliers	91569	1194 (2.04-2.04)

The table below summarises the geometric issues observed across the polymeric chains and their fit to the electron density. The red, orange, yellow and green segments on the lower bar indicate the fraction of residues that contain outliers for ≥ 3 , 2, 1 and 0 types of geometric quality criteria. A grey segment represents the fraction of residues that are not modelled. The numeric value for each fraction is indicated below the corresponding segment, with a dot representing fractions $\leq 5\%$. The upper red bar (where present) indicates the fraction of residues that have poor fit to the electron density. The numeric value is given above the bar.

Mol	Chain	Length	Quality of chain
1	A	441	<div> <div>4%</div> <div> <div></div> <div>81%</div> <div>7%</div> <div>11%</div> </div> </div>
1	B	441	<div> <div>7%</div> <div> <div></div> <div>83%</div> <div>8%</div> <div>9%</div> </div> </div>
1	C	441	<div> <div>3%</div> <div> <div></div> <div>87%</div> <div>7%</div> <div>• 6%</div> </div> </div>
1	D	441	<div> <div>4%</div> <div> <div></div> <div>83%</div> <div>6%</div> <div>11%</div> </div> </div>

2 Entry composition

There are 3 unique types of molecules in this entry. The entry contains 12542 atoms, of which 0 are hydrogens and 0 are deuteriums.

In the tables below, the ZeroOcc column contains the number of atoms modelled with zero occupancy, the AltConf column contains the number of residues with at least one atom in alternate conformation and the Trace column contains the number of residues modelled with at most 2 atoms.

- Molecule 1 is a protein called 3-hydroxy-3-methylglutaryl-coenzyme A reductase.

Mol	Chain	Residues	Atoms					ZeroOcc	AltConf	Trace
1	A	392	Total	C	N	O	S	0	0	0
			2903	1806	511	557	29			
1	B	401	Total	C	N	O	S	0	0	0
			2979	1859	524	567	29			
1	C	416	Total	C	N	O	S	0	0	0
			3087	1923	540	594	30			
1	D	394	Total	C	N	O	S	0	0	0
			2920	1818	514	559	29			

There are 28 discrepancies between the modelled and reference sequences:

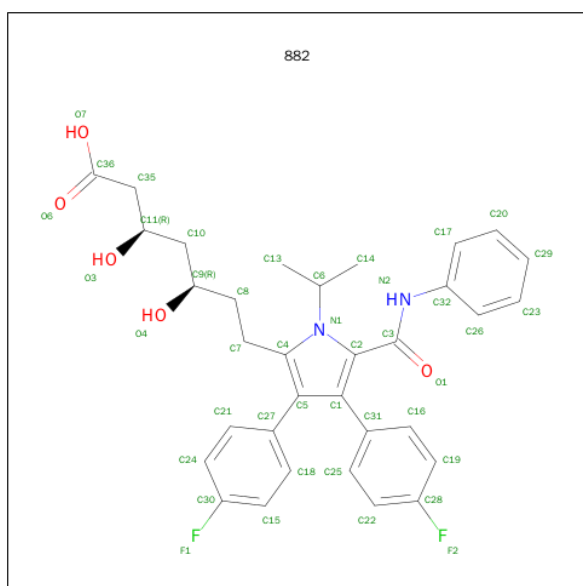
Chain	Residue	Modelled	Actual	Comment	Reference
A	435	HIS	-	expression tag	UNP P04035
A	436	HIS	-	expression tag	UNP P04035
A	437	HIS	-	expression tag	UNP P04035
A	438	HIS	-	expression tag	UNP P04035
A	439	HIS	-	expression tag	UNP P04035
A	440	HIS	-	expression tag	UNP P04035
A	485	ILE	MET	engineered	UNP P04035
B	435	HIS	-	expression tag	UNP P04035
B	436	HIS	-	expression tag	UNP P04035
B	437	HIS	-	expression tag	UNP P04035
B	438	HIS	-	expression tag	UNP P04035
B	439	HIS	-	expression tag	UNP P04035
B	440	HIS	-	expression tag	UNP P04035
B	485	ILE	MET	engineered	UNP P04035
C	435	HIS	-	expression tag	UNP P04035
C	436	HIS	-	expression tag	UNP P04035
C	437	HIS	-	expression tag	UNP P04035
C	438	HIS	-	expression tag	UNP P04035
C	439	HIS	-	expression tag	UNP P04035
C	440	HIS	-	expression tag	UNP P04035
C	485	ILE	MET	engineered	UNP P04035

Continued on next page...

Continued from previous page...

Chain	Residue	Modelled	Actual	Comment	Reference
D	435	HIS	-	expression tag	UNP P04035
D	436	HIS	-	expression tag	UNP P04035
D	437	HIS	-	expression tag	UNP P04035
D	438	HIS	-	expression tag	UNP P04035
D	439	HIS	-	expression tag	UNP P04035
D	440	HIS	-	expression tag	UNP P04035
D	485	ILE	MET	engineered	UNP P04035

- Molecule 2 is (3R,5R)-7-[5-(ANILINOCARBONYL)-3,4-BIS(4-FLUOROPHENYL)-1-ISO-PROPYL-1H-PYRROL-2-YL]-3,5-DIHYDROXYHEPTANOIC ACID (three-letter code: 882) (formula: C₃₃H₃₄F₂N₂O₅).



Mol	Chain	Residues	Atoms					ZeroOcc	AltConf
2	A	1	Total	C	F	N	O	0	0
			42	33	2	2	5		
2	A	1	Total	C	F	N	O	0	0
			42	33	2	2	5		
2	C	1	Total	C	F	N	O	0	0
			42	33	2	2	5		
2	D	1	Total	C	F	N	O	0	0
			42	33	2	2	5		

- Molecule 3 is water.

Mol	Chain	Residues	Atoms		ZeroOcc	AltConf
3	A	132	Total	O	0	0
			132	132		

Continued on next page...

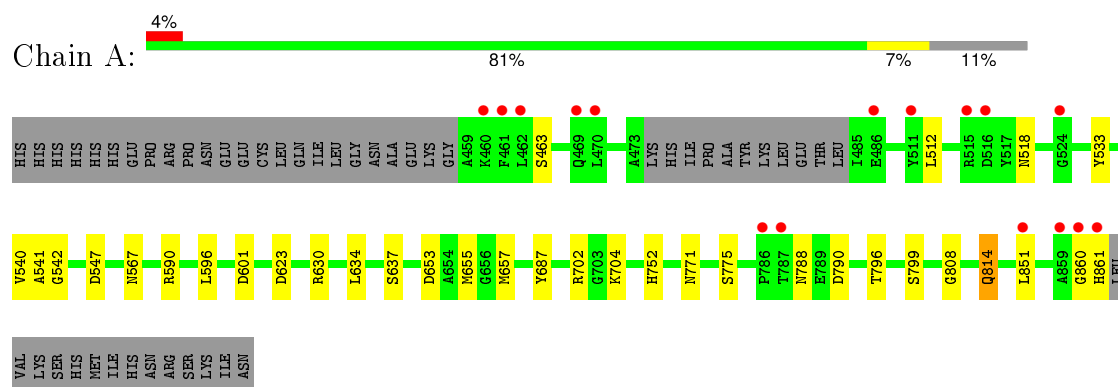
Continued from previous page...

Mol	Chain	Residues	Atoms		ZeroOcc	AltConf
3	B	113	Total 113	O 113	0	0
3	C	109	Total 109	O 109	0	0
3	D	131	Total 131	O 131	0	0

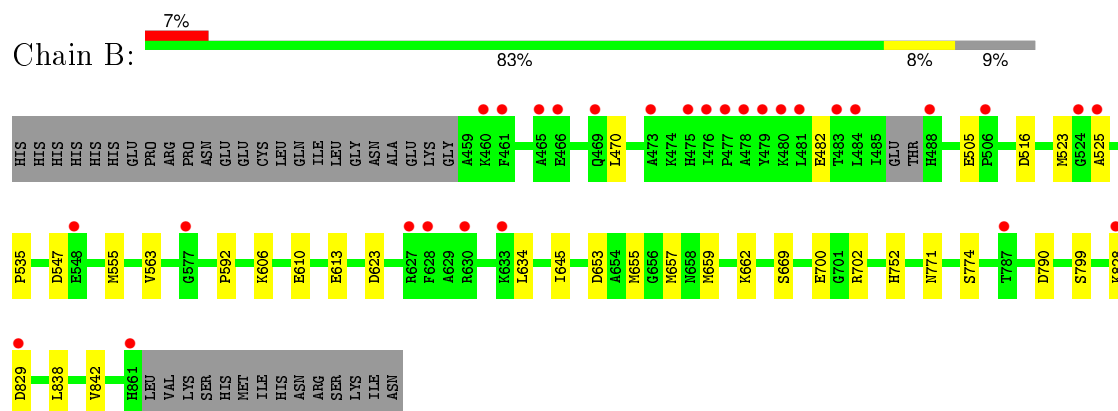
3 Residue-property plots

These plots are drawn for all protein, RNA and DNA chains in the entry. The first graphic for a chain summarises the proportions of errors displayed in the second graphic. The second graphic shows the sequence view annotated by issues in geometry and electron density. Residues are color-coded according to the number of geometric quality criteria for which they contain at least one outlier: green = 0, yellow = 1, orange = 2 and red = 3 or more. A red dot above a residue indicates a poor fit to the electron density ($RSRZ > 2$). Stretches of 2 or more consecutive residues without any outlier are shown as a green connector. Residues present in the sample, but not in the model, are shown in grey.

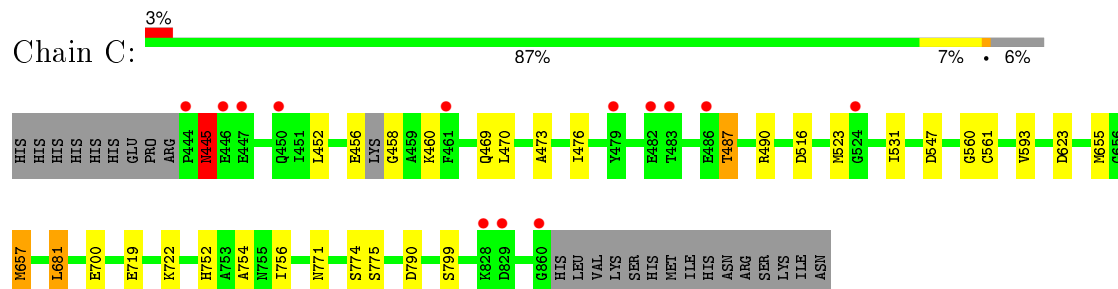
- Molecule 1: 3-hydroxy-3-methylglutaryl-coenzyme A reductase



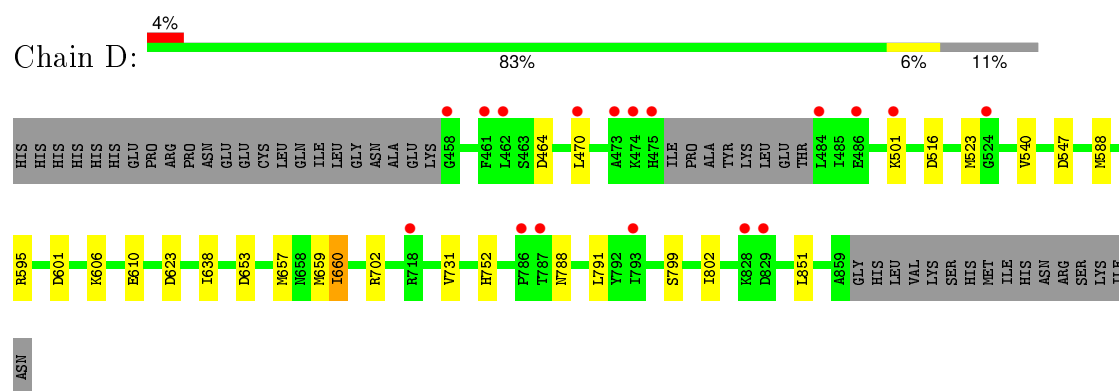
- Molecule 1: 3-hydroxy-3-methylglutaryl-coenzyme A reductase



- Molecule 1: 3-hydroxy-3-methylglutaryl-coenzyme A reductase



- Molecule 1: 3-hydroxy-3-methylglutaryl-coenzyme A reductase



4 Data and refinement statistics

Property	Value	Source
Space group	P 1 21 1	Depositor
Cell constants a, b, c, α , β , γ	74.73Å 176.96Å 76.73Å 90.00° 118.83° 90.00°	Depositor
Resolution (Å)	30.00 – 2.05 19.99 – 2.22	Depositor EDS
% Data completeness (in resolution range)	79.7 (30.00-2.05) 74.9 (19.99-2.22)	Depositor EDS
R_{merge}	0.08	Depositor
R_{sym}	(Not available)	Depositor
$\langle I/\sigma(I) \rangle$ ¹	2.17 (at 2.21Å)	Xtriage
Refinement program	REFMAC 5.1.24	Depositor
R, R_{free}	0.223 , 0.263 0.226 , 0.225	Depositor DCC
R_{free} test set	3233 reflections (5.28%)	DCC
Wilson B-factor (Å ²)	26.4	Xtriage
Anisotropy	0.250	Xtriage
Bulk solvent k_{sol} (e/Å ³), B_{sol} (Å ²)	0.36 , 37.7	EDS
Estimated twinning fraction	0.012 for -h-l,k,h 0.012 for l,k,-h-l 0.029 for h,-k,-h-l 0.034 for -h-l,-k,l 0.029 for l,-k,h	Xtriage
L-test for twinning ²	$\langle L \rangle = 0.48$, $\langle L^2 \rangle = 0.31$	Xtriage
Outliers	0 of 64413 reflections	Xtriage
F_o, F_c correlation	0.92	EDS
Total number of atoms	12542	wwPDB-VP
Average B, all atoms (Å ²)	35.0	wwPDB-VP

Xtriage's analysis on translational NCS is as follows: *The largest off-origin peak in the Patterson function is 3.97% of the height of the origin peak. No significant pseudotranslation is detected.*

¹ Intensities estimated from amplitudes.

² Theoretical values of $\langle |L| \rangle$, $\langle L^2 \rangle$ for acentric reflections are 0.5, 0.375 respectively for untwinned datasets, and 0.333, 0.2 for perfectly twinned datasets.

5 Model quality

5.1 Standard geometry

Bond lengths and bond angles in the following residue types are not validated in this section:
882

The Z score for a bond length (or angle) is the number of standard deviations the observed value is removed from the expected value. A bond length (or angle) with $|Z| > 5$ is considered an outlier worth inspection. RMSZ is the root-mean-square of all Z scores of the bond lengths (or angles).

Mol	Chain	Bond lengths		Bond angles	
		RMSZ	$\# Z > 5$	RMSZ	$\# Z > 5$
1	A	0.36	0/2943	0.63	4/3977 (0.1%)
1	B	0.34	0/3022	0.61	6/4084 (0.1%)
1	C	0.36	0/3130	0.62	4/4230 (0.1%)
1	D	0.36	0/2960	0.64	6/3999 (0.2%)
All	All	0.36	0/12055	0.62	20/16290 (0.1%)

There are no bond length outliers.

All (20) bond angle outliers are listed below:

Mol	Chain	Res	Type	Atoms	Z	Observed(°)	Ideal(°)
1	D	623	ASP	CB-CG-OD2	5.83	123.54	118.30
1	B	623	ASP	CB-CG-OD2	5.81	123.53	118.30
1	C	790	ASP	CB-CG-OD2	5.68	123.41	118.30
1	C	623	ASP	CB-CG-OD2	5.66	123.39	118.30
1	A	623	ASP	CB-CG-OD2	5.62	123.36	118.30
1	C	547	ASP	CB-CG-OD2	5.51	123.26	118.30
1	D	547	ASP	CB-CG-OD2	5.50	123.25	118.30
1	D	601	ASP	CB-CG-OD2	5.41	123.17	118.30
1	B	790	ASP	CB-CG-OD2	5.40	123.16	118.30
1	D	653	ASP	CB-CG-OD2	5.27	123.04	118.30
1	B	829	ASP	CB-CG-OD2	5.25	123.03	118.30
1	A	790	ASP	CB-CG-OD2	5.25	123.03	118.30
1	D	464	ASP	CB-CG-OD2	5.22	123.00	118.30
1	B	516	ASP	CB-CG-OD2	5.21	122.99	118.30
1	A	547	ASP	CB-CG-OD2	5.17	122.95	118.30
1	A	653	ASP	CB-CG-OD2	5.16	122.94	118.30
1	B	547	ASP	CB-CG-OD2	5.13	122.92	118.30
1	C	516	ASP	CB-CG-OD2	5.10	122.89	118.30
1	D	516	ASP	CB-CG-OD2	5.08	122.87	118.30
1	B	653	ASP	CB-CG-OD2	5.08	122.87	118.30

There are no chirality outliers.

There are no planarity outliers.

5.2 Too-close contacts

In the following table, the Non-H and H(model) columns list the number of non-hydrogen atoms and hydrogen atoms in the chain respectively. The H(added) column lists the number of hydrogen atoms added and optimized by MolProbity. The Clashes column lists the number of clashes within the asymmetric unit, whereas Symm-Clashes lists symmetry related clashes.

Mol	Chain	Non-H	H(model)	H(added)	Clashes	Symm-Clashes
1	A	2903	0	2933	12	0
1	B	2979	0	3020	10	0
1	C	3087	0	3121	15	0
1	D	2920	0	2957	6	0
2	A	84	0	66	1	0
2	C	42	0	33	1	0
2	D	42	0	33	1	0
3	A	132	0	0	0	0
3	B	113	0	0	0	0
3	C	109	0	0	0	0
3	D	131	0	0	0	0
All	All	12542	0	12163	41	0

The all-atom clashscore is defined as the number of clashes found per 1000 atoms (including hydrogen atoms). The all-atom clashscore for this structure is 2.

All (41) close contacts within the same asymmetric unit are listed below, sorted by their clash magnitude.

Atom-1	Atom-2	Interatomic distance (Å)	Clash overlap (Å)
1:A:655:MET:SD	1:A:657:MET:HG2	2.27	0.74
1:A:771:ASN:OD1	1:A:775:SER:OG	2.10	0.69
1:C:681:LEU:HD22	1:D:731:VAL:HG22	1.73	0.69
1:C:655:MET:SD	1:C:657:MET:HG2	2.35	0.67
1:C:445:ASN:HD22	1:C:469:GLN:HE21	1.44	0.65
1:C:771:ASN:OD1	1:C:775:SER:OG	2.17	0.62
1:B:655:MET:SD	1:B:657:MET:HG2	2.43	0.57
1:C:456:GLU:C	1:C:458:GLY:N	2.60	0.55
1:C:774:SER:HA	1:C:799:SER:O	2.08	0.53
1:C:487:THR:HG23	1:C:490:ARG:HB2	1.92	0.51
1:B:555:MET:CE	1:B:563:VAL:HA	2.41	0.51
1:D:606:LYS:NZ	1:D:610:GLU:OE2	2.43	0.49

Continued on next page...

Continued from previous page...

Atom-1	Atom-2	Interatomic distance (Å)	Clash overlap (Å)
2:C:4:882:O1	2:C:4:882:H133	2.12	0.49
1:B:606:LYS:NZ	1:B:610:GLU:OE2	2.47	0.47
1:A:796:THR:HG21	1:D:638:ILE:O	2.14	0.47
1:A:533:TYR:CD1	1:B:535:PRO:HB3	2.49	0.47
1:B:555:MET:HE1	1:B:563:VAL:HA	1.96	0.47
1:B:700:GLU:OE2	1:C:700:GLU:OE2	2.33	0.46
1:A:596:LEU:HB3	1:A:601:ASP:HB2	1.98	0.46
1:B:592:PRO:HD2	1:B:645:ILE:O	2.15	0.46
1:C:470:LEU:O	1:C:473:ALA:O	2.34	0.45
1:A:541:ALA:HA	1:A:567:ASN:HD22	1.82	0.45
1:A:542:GLY:H	1:A:567:ASN:ND2	2.13	0.45
1:C:719:GLU:O	1:C:722:LYS:NZ	2.48	0.45
1:B:774:SER:HA	1:B:799:SER:O	2.18	0.43
1:B:702:ARG:O	1:B:799:SER:HA	2.17	0.43
1:D:588:MET:HB3	1:D:660:ILE:HD13	2.00	0.43
1:C:754:ALA:HB1	1:C:771:ASN:HD21	1.84	0.42
1:A:590:ARG:NH2	1:A:657:MET:CE	2.82	0.42
1:A:808:GLY:O	1:A:814:GLN:HG3	2.18	0.42
1:C:531:ILE:HD13	1:D:540:VAL:CG2	2.50	0.42
2:D:3:882:O1	2:D:3:882:H133	2.20	0.41
1:A:637:SER:HB2	1:A:687:TYR:OH	2.20	0.41
1:C:560:GLY:O	1:C:561:CYS:HB2	2.21	0.41
1:A:590:ARG:NH2	1:A:657:MET:HE3	2.36	0.41
1:D:702:ARG:O	1:D:799:SER:HA	2.20	0.41
1:C:593:VAL:HG13	1:C:681:LEU:HB3	2.03	0.41
1:A:702:ARG:O	1:A:799:SER:HA	2.21	0.41
2:A:2:882:H133	2:A:2:882:O1	2.22	0.40
1:B:838:LEU:O	1:B:842:VAL:HG23	2.22	0.40
1:C:756:ILE:HD12	1:C:756:ILE:N	2.36	0.40

There are no symmetry-related clashes.

5.3 Torsion angles

5.3.1 Protein backbone

In the following table, the Percentiles column shows the percent Ramachandran outliers of the chain as a percentile score with respect to all X-ray entries followed by that with respect to entries of similar resolution.

The Analysed column shows the number of residues for which the backbone conformation was analysed, and the total number of residues.

Mol	Chain	Analysed	Favoured	Allowed	Outliers	Percentiles	
1	A	388/441 (88%)	374 (96%)	13 (3%)	1 (0%)	46	36
1	B	397/441 (90%)	381 (96%)	15 (4%)	1 (0%)	46	36
1	C	412/441 (93%)	391 (95%)	20 (5%)	1 (0%)	52	43
1	D	390/441 (88%)	375 (96%)	15 (4%)	0	100	100
All	All	1587/1764 (90%)	1521 (96%)	63 (4%)	3 (0%)	52	43

All (3) Ramachandran outliers are listed below:

Mol	Chain	Res	Type
1	C	445	ASN
1	B	525	ALA
1	A	860	GLY

5.3.2 Protein sidechains ⓘ

In the following table, the Percentiles column shows the percent sidechain outliers of the chain as a percentile score with respect to all X-ray entries followed by that with respect to entries of similar resolution.

The Analysed column shows the number of residues for which the sidechain conformation was analysed, and the total number of residues.

Mol	Chain	Analysed	Rotameric	Outliers	Percentiles	
1	A	310/355 (87%)	298 (96%)	12 (4%)	39	30
1	B	318/355 (90%)	306 (96%)	12 (4%)	40	31
1	C	330/355 (93%)	321 (97%)	9 (3%)	52	45
1	D	312/355 (88%)	300 (96%)	12 (4%)	40	31
All	All	1270/1420 (89%)	1225 (96%)	45 (4%)	43	35

All (45) residues with a non-rotameric sidechain are listed below:

Mol	Chain	Res	Type
1	A	463	SER
1	A	512	LEU
1	A	518	ASN
1	A	540	VAL
1	A	630	ARG
1	A	634	LEU
1	A	704	LYS
1	A	752	HIS

Continued on next page...

Continued from previous page...

Mol	Chain	Res	Type
1	A	788	ASN
1	A	814	GLN
1	A	851	LEU
1	A	861	HIS
1	B	470	LEU
1	B	482	GLU
1	B	505	GLU
1	B	523	MET
1	B	613	GLU
1	B	634	LEU
1	B	659	MET
1	B	662	LYS
1	B	669	SER
1	B	752	HIS
1	B	771	ASN
1	B	828	LYS
1	C	445	ASN
1	C	452	LEU
1	C	460	LYS
1	C	476	ILE
1	C	487	THR
1	C	523	MET
1	C	657	MET
1	C	681	LEU
1	C	752	HIS
1	D	470	LEU
1	D	501	LYS
1	D	523	MET
1	D	595	ARG
1	D	657	MET
1	D	659	MET
1	D	660	ILE
1	D	752	HIS
1	D	788	ASN
1	D	791	LEU
1	D	802	ILE
1	D	851	LEU

Some sidechains can be flipped to improve hydrogen bonding and reduce clashes. All (18) such sidechains are listed below:

Mol	Chain	Res	Type
1	A	518	ASN

Continued on next page...

Continued from previous page...

Mol	Chain	Res	Type
1	A	567	ASN
1	A	635	HIS
1	B	472	ASN
1	B	510	GLN
1	B	632	GLN
1	C	469	GLN
1	C	472	ASN
1	C	488	HIS
1	C	679	GLN
1	C	819	GLN
1	C	837	GLN
1	D	488	HIS
1	D	518	ASN
1	D	632	GLN
1	D	642	ASN
1	D	788	ASN
1	D	819	GLN

5.3.3 RNA [i](#)

There are no RNA molecules in this entry.

5.4 Non-standard residues in protein, DNA, RNA chains [i](#)

There are no non-standard protein/DNA/RNA residues in this entry.

5.5 Carbohydrates [i](#)

There are no carbohydrates in this entry.

5.6 Ligand geometry [i](#)

4 ligands are modelled in this entry.

In the following table, the Counts columns list the number of bonds (or angles) for which Mogul statistics could be retrieved, the number of bonds (or angles) that are observed in the model and the number of bonds (or angles) that are defined in the chemical component dictionary. The Link column lists molecule types, if any, to which the group is linked. The Z score for a bond length (or angle) is the number of standard deviations the observed value is removed from the expected value. A bond length (or angle) with $|Z| > 2$ is considered an outlier worth inspection. RMSZ is the root-mean-square of all Z scores of the bond lengths (or angles).

Mol	Type	Chain	Res	Link	Bond lengths			Bond angles		
					Counts	RMSZ	# Z > 2	Counts	RMSZ	# Z > 2
2	882	A	1	-	39,45,45	0.86	2 (5%)	52,63,63	1.42	7 (13%)
2	882	A	2	-	39,45,45	0.81	1 (2%)	52,63,63	1.28	6 (11%)
2	882	C	4	-	39,45,45	0.79	1 (2%)	52,63,63	1.38	8 (15%)
2	882	D	3	-	39,45,45	0.89	2 (5%)	52,63,63	1.52	6 (11%)

In the following table, the Chirals column lists the number of chiral outliers, the number of chiral centers analysed, the number of these observed in the model and the number defined in the chemical component dictionary. Similar counts are reported in the Torsion and Rings columns. '-' means no outliers of that kind were identified.

Mol	Type	Chain	Res	Link	Chirals	Torsions	Rings
2	882	A	1	-	-	0/27/33/33	0/4/4/4
2	882	A	2	-	-	0/27/33/33	0/4/4/4
2	882	C	4	-	-	0/27/33/33	0/4/4/4
2	882	D	3	-	-	0/27/33/33	0/4/4/4

All (6) bond length outliers are listed below:

Mol	Chain	Res	Type	Atoms	Z	Observed(Å)	Ideal(Å)
2	A	1	882	C1-C5	-2.65	1.36	1.43
2	D	3	882	C1-C5	-2.53	1.36	1.43
2	D	3	882	C1-C2	-2.50	1.38	1.41
2	A	2	882	C1-C5	-2.41	1.36	1.43
2	A	1	882	C1-C2	-2.40	1.38	1.41
2	C	4	882	C1-C5	-2.32	1.36	1.43

All (27) bond angle outliers are listed below:

Mol	Chain	Res	Type	Atoms	Z	Observed(°)	Ideal(°)
2	D	3	882	C21-C27-C5	-3.92	114.23	120.78
2	A	1	882	C7-C8-C9	-3.43	108.23	115.31
2	D	3	882	C7-C4-C5	-3.21	124.98	130.41
2	D	3	882	C7-C8-C9	-3.21	108.69	115.31
2	D	3	882	C9-C10-C11	-3.19	109.74	114.18
2	C	4	882	C21-C27-C5	-3.06	115.66	120.78
2	A	2	882	C21-C27-C5	-3.05	115.68	120.78
2	C	4	882	C7-C8-C9	-3.01	109.10	115.31
2	A	1	882	C21-C27-C5	-2.96	115.83	120.78
2	A	1	882	C7-C4-C5	-2.77	125.73	130.41
2	A	1	882	C9-C10-C11	-2.65	110.48	114.18
2	A	1	882	C14-C6-N1	-2.63	108.25	111.55

Continued on next page...

Continued from previous page...

Mol	Chain	Res	Type	Atoms	Z	Observed(°)	Ideal(°)
2	A	2	882	C7-C4-C5	-2.60	126.01	130.41
2	C	4	882	C32-N2-C3	-2.53	120.81	126.78
2	C	4	882	C7-C4-C5	-2.50	126.19	130.41
2	D	3	882	C10-C9-C8	-2.22	108.44	112.26
2	C	4	882	C10-C9-C8	-2.19	108.51	112.26
2	A	2	882	C19-C28-C22	-2.18	119.73	122.87
2	A	1	882	C32-N2-C3	-2.15	121.70	126.78
2	C	4	882	C10-C11-C35	-2.04	109.04	112.94
2	C	4	882	C19-C28-C22	-2.03	119.95	122.87
2	A	2	882	C7-C8-C9	-2.02	111.13	115.31
2	A	1	882	C18-C15-C30	2.00	120.51	118.35
2	A	2	882	C25-C22-C28	2.06	120.58	118.35
2	A	2	882	C31-C1-C2	2.07	130.97	126.88
2	C	4	882	C18-C27-C5	2.24	124.53	120.78
2	D	3	882	C18-C27-C5	2.99	125.78	120.78

There are no chirality outliers.

There are no torsion outliers.

There are no ring outliers.

3 monomers are involved in 3 short contacts:

Mol	Chain	Res	Type	Clashes	Symm-Clashes
2	A	2	882	1	0
2	C	4	882	1	0
2	D	3	882	1	0

5.7 Other polymers [i](#)

There are no such residues in this entry.

5.8 Polymer linkage issues [i](#)

There are no chain breaks in this entry.

6 Fit of model and data ⓘ

6.1 Protein, DNA and RNA chains ⓘ

In the following table, the column labelled ‘#RSRZ > 2’ contains the number (and percentage) of RSRZ outliers, followed by percent RSRZ outliers for the chain as percentile scores relative to all X-ray entries and entries of similar resolution. The OWAB column contains the minimum, median, 95th percentile and maximum values of the occupancy-weighted average B-factor per residue. The column labelled ‘Q < 0.9’ lists the number of (and percentage) of residues with an average occupancy less than 0.9.

Mol	Chain	Analysed	<RSRZ>	#RSRZ > 2		OWAB(Å ²)	Q < 0.9
1	A	392/441 (88%)	0.10	16 (4%)	41 47	22, 32, 55, 70	0
1	B	401/441 (90%)	0.36	29 (7%)	18 22	22, 37, 71, 89	0
1	C	416/441 (94%)	-0.00	13 (3%)	52 60	19, 31, 60, 85	0
1	D	394/441 (89%)	-0.02	17 (4%)	39 44	19, 31, 53, 90	0
All	All	1603/1764 (90%)	0.11	75 (4%)	35 41	19, 33, 58, 90	0

All (75) RSRZ outliers are listed below:

Mol	Chain	Res	Type	RSRZ
1	B	479	TYR	12.9
1	B	861	HIS	8.3
1	B	524	GLY	7.8
1	D	461	PHE	7.2
1	A	861	HIS	7.0
1	B	461	PHE	5.8
1	C	479	TYR	5.4
1	B	460	LYS	5.3
1	D	484	LEU	4.7
1	A	786	PRO	4.4
1	A	461	PHE	4.3
1	D	475	HIS	4.0
1	B	478	ALA	4.0
1	D	474	LYS	3.9
1	B	473	ALA	3.7
1	B	477	PRO	3.7
1	C	483	THR	3.6
1	D	470	LEU	3.6
1	A	524	GLY	3.5
1	B	465	ALA	3.5
1	B	476	ILE	3.5

Continued on next page...

Continued from previous page...

Mol	Chain	Res	Type	RSRZ
1	A	859	ALA	3.4
1	C	829	ASP	3.4
1	D	458	GLY	3.3
1	A	470	LEU	3.3
1	B	829	ASP	3.3
1	A	486	GLU	3.2
1	D	787	THR	3.2
1	B	828	LYS	3.2
1	A	860	GLY	3.1
1	B	483	THR	3.1
1	B	627	ARG	3.1
1	B	475	HIS	3.1
1	C	461	PHE	3.0
1	B	787	THR	2.9
1	D	828	LYS	2.9
1	D	718	ARG	2.9
1	D	486	GLU	2.9
1	B	628	PHE	2.8
1	A	787	THR	2.8
1	B	484	LEU	2.8
1	A	511	TYR	2.8
1	B	469	GLN	2.7
1	B	630	ARG	2.7
1	A	516	ASP	2.7
1	C	828	LYS	2.6
1	B	548	GLU	2.6
1	D	786	PRO	2.6
1	A	851	LEU	2.5
1	B	480	LYS	2.5
1	B	466	GLU	2.5
1	B	525	ALA	2.4
1	D	473	ALA	2.4
1	C	450	GLN	2.4
1	C	860	GLY	2.4
1	B	506	PRO	2.4
1	C	482	GLU	2.3
1	B	633	LYS	2.3
1	A	462	LEU	2.3
1	B	488	HIS	2.3
1	B	577	GLY	2.3
1	D	524	GLY	2.3
1	D	793	ILE	2.2

Continued on next page...

Continued from previous page...

Mol	Chain	Res	Type	RSRZ
1	C	524	GLY	2.2
1	C	447	GLU	2.2
1	A	469	GLN	2.2
1	D	501	LYS	2.2
1	C	444	PRO	2.2
1	D	462	LEU	2.2
1	B	481	LEU	2.1
1	C	486	GLU	2.1
1	C	446	GLU	2.1
1	D	829	ASP	2.1
1	A	460	LYS	2.0
1	A	515	ARG	2.0

6.2 Non-standard residues in protein, DNA, RNA chains [i](#)

There are no non-standard protein/DNA/RNA residues in this entry.

6.3 Carbohydrates [i](#)

There are no carbohydrates in this entry.

6.4 Ligands [i](#)

In the following table, the Atoms column lists the number of modelled atoms in the group and the number defined in the chemical component dictionary. LLDF column lists the quality of electron density of the group with respect to its neighbouring residues in protein, DNA or RNA chains. The B-factors column lists the minimum, median, 95th percentile and maximum values of B factors of atoms in the group. The column labelled 'Q< 0.9' lists the number of atoms with occupancy less than 0.9.

Mol	Type	Chain	Res	Atoms	RSCC	RSR	LLDF	B-factors(Å ²)	Q<0.9
2	882	C	4	42/42	0.90	0.13	1.45	27,35,37,38	0
2	882	A	2	42/42	0.92	0.12	0.00	25,31,35,39	0
2	882	D	3	42/42	0.94	0.10	-0.09	21,27,32,32	0
2	882	A	1	42/42	0.93	0.11	-0.23	24,35,41,44	0

6.5 Other polymers [i](#)

There are no such residues in this entry.