



wwPDB X-ray Structure Validation Summary Report ⓘ

Feb 1, 2016 – 07:51 AM GMT

PDB ID : 3CF2
Title : Structure of P97/vcp in complex with ADP/AMP-PNP
Authors : Davies, J.M.; Delabarre, B.; Brunger, A.T.; Weis, W.I.
Deposited on : 2008-03-01
Resolution : 3.50 Å(reported)

This is a wwPDB X-ray Structure Validation Summary Report for a publicly released PDB entry.
We welcome your comments at validation@mail.wwpdb.org
A user guide is available at
<http://wwpdb.org/validation/2016/XrayValidationReportHelp>
with specific help available everywhere you see the ⓘ symbol.

The following versions of software and data (see [references ⓘ](#)) were used in the production of this report:

MolProbity : 4.02b-467
Mogul : 1.7 (RC4), CSD as536be (2015)
Xtriage (Phenix) : 1.9-1692
EDS : rb-20026688
Percentile statistics : 20151230.v01 (using entries in the PDB archive December 30th 2015)
Refmac : 5.8.0135
CCP4 : 6.5.0
Ideal geometry (proteins) : Engh & Huber (2001)
Ideal geometry (DNA, RNA) : Parkinson et al. (1996)
Validation Pipeline (wwPDB-VP) : trunk26865

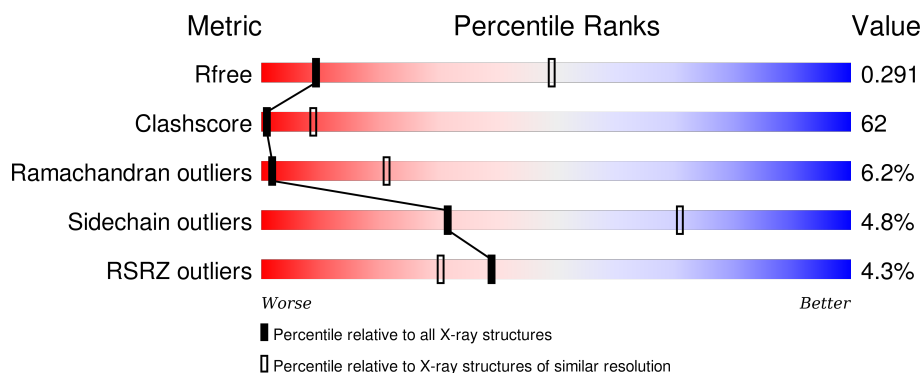
1 Overall quality at a glance ⓘ

The following experimental techniques were used to determine the structure:

X-RAY DIFFRACTION

The reported resolution of this entry is 3.50 Å.

Percentile scores (ranging between 0-100) for global validation metrics of the entry are shown in the following graphic. The table shows the number of entries on which the scores are based.



Metric	Whole archive (#Entries)	Similar resolution (#Entries, resolution range(Å))
R_{free}	91344	1051 (3.60-3.40)
Clashscore	102246	1157 (3.60-3.40)
Ramachandran outliers	100387	1120 (3.60-3.40)
Sidechain outliers	100360	1121 (3.60-3.40)
RSRZ outliers	91569	1058 (3.60-3.40)

The table below summarises the geometric issues observed across the polymeric chains and their fit to the electron density. The red, orange, yellow and green segments on the lower bar indicate the fraction of residues that contain outliers for ≥ 3 , 2, 1 and 0 types of geometric quality criteria. A grey segment represents the fraction of residues that are not modelled. The numeric value for each fraction is indicated below the corresponding segment, with a dot representing fractions $\leq 5\%$. The upper red bar (where present) indicates the fraction of residues that have poor fit to the electron density. The numeric value is given above the bar.

Mol	Chain	Length	Quality of chain
1	A	806	<div> <div>4%</div> <div>26%</div> <div>49%</div> <div>7%</div> <div>18%</div> </div>
1	B	806	<div> <div>3%</div> <div>27%</div> <div>48%</div> <div>7%</div> <div>18%</div> </div>
1	C	806	<div> <div>3%</div> <div>26%</div> <div>49%</div> <div>7%</div> <div>18%</div> </div>
1	D	806	<div> <div>4%</div> <div>26%</div> <div>49%</div> <div>7%</div> <div>18%</div> </div>

2 Entry composition [i](#)

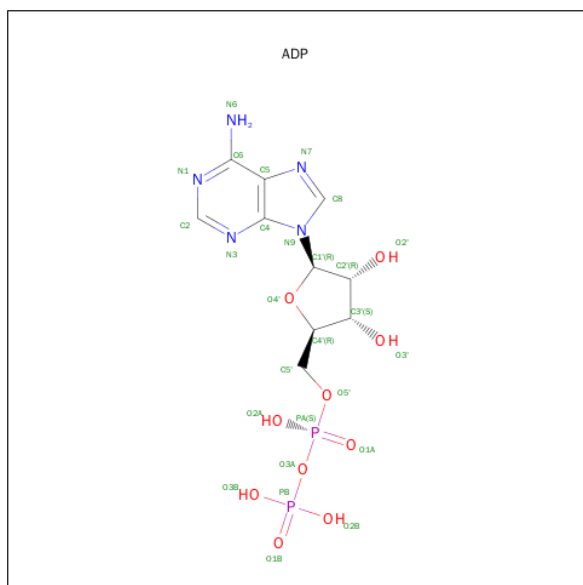
There are 3 unique types of molecules in this entry. The entry contains 20917 atoms, of which 0 are hydrogens and 0 are deuteriums.

In the tables below, the ZeroOcc column contains the number of atoms modelled with zero occupancy, the AltConf column contains the number of residues with at least one atom in alternate conformation and the Trace column contains the number of residues modelled with at most 2 atoms.

- Molecule 1 is a protein called Transitional endoplasmic reticulum ATPase.

Mol	Chain	Residues	Atoms					ZeroOcc	AltConf	Trace
1	A	659	Total	C	N	O	S	0	0	0
			5172	3263	903	977	29			
1	B	659	Total	C	N	O	S	0	0	0
			5172	3263	903	977	29			
1	C	659	Total	C	N	O	S	0	0	0
			5172	3263	903	977	29			
1	D	659	Total	C	N	O	S	0	0	0
			5169	3260	903	977	29			

- Molecule 2 is ADENOSINE-5'-DIPHOSPHATE (three-letter code: ADP) (formula: $C_{10}H_{15}N_5O_{10}P_2$).



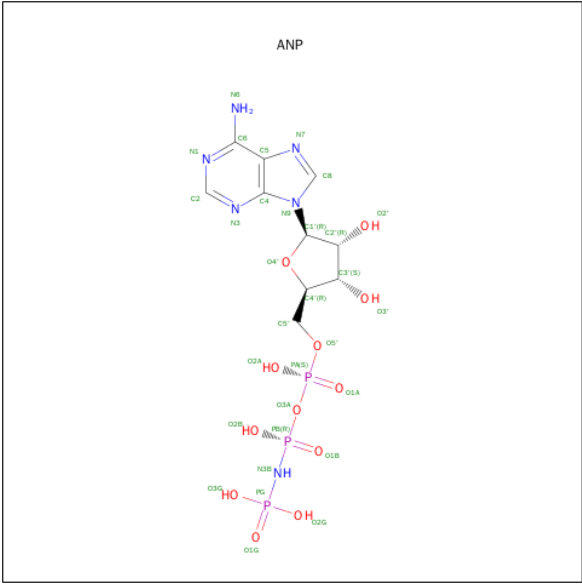
Mol	Chain	Residues	Atoms					ZeroOcc	AltConf
2	A	1	Total	C	N	O	P	0	0
			27	10	5	10	2		
2	B	1	Total	C	N	O	P	0	0
			27	10	5	10	2		

Continued on next page...

Continued from previous page...

Mol	Chain	Residues	Atoms					ZeroOcc	AltConf
2	C	1	Total	C	N	O	P	0	0
			27	10	5	10	2		
2	D	1	Total	C	N	O	P	0	0
			27	10	5	10	2		

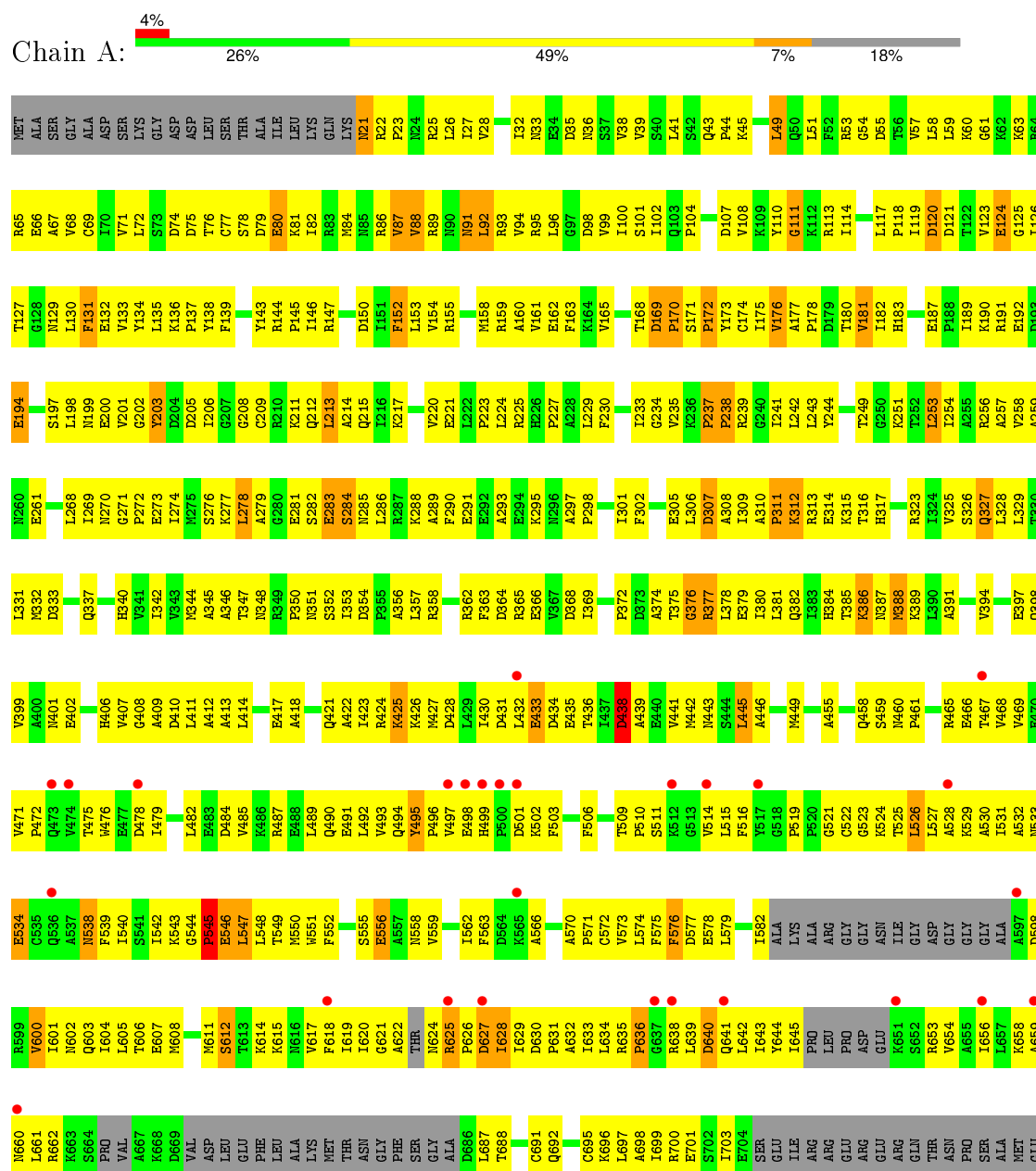
- Molecule 3 is PHOSPHOAMINOPHOSPHONIC ACID-ADENYLATE ESTER (three-letter code: ANP) (formula: C₁₀H₁₇N₆O₁₂P₃).

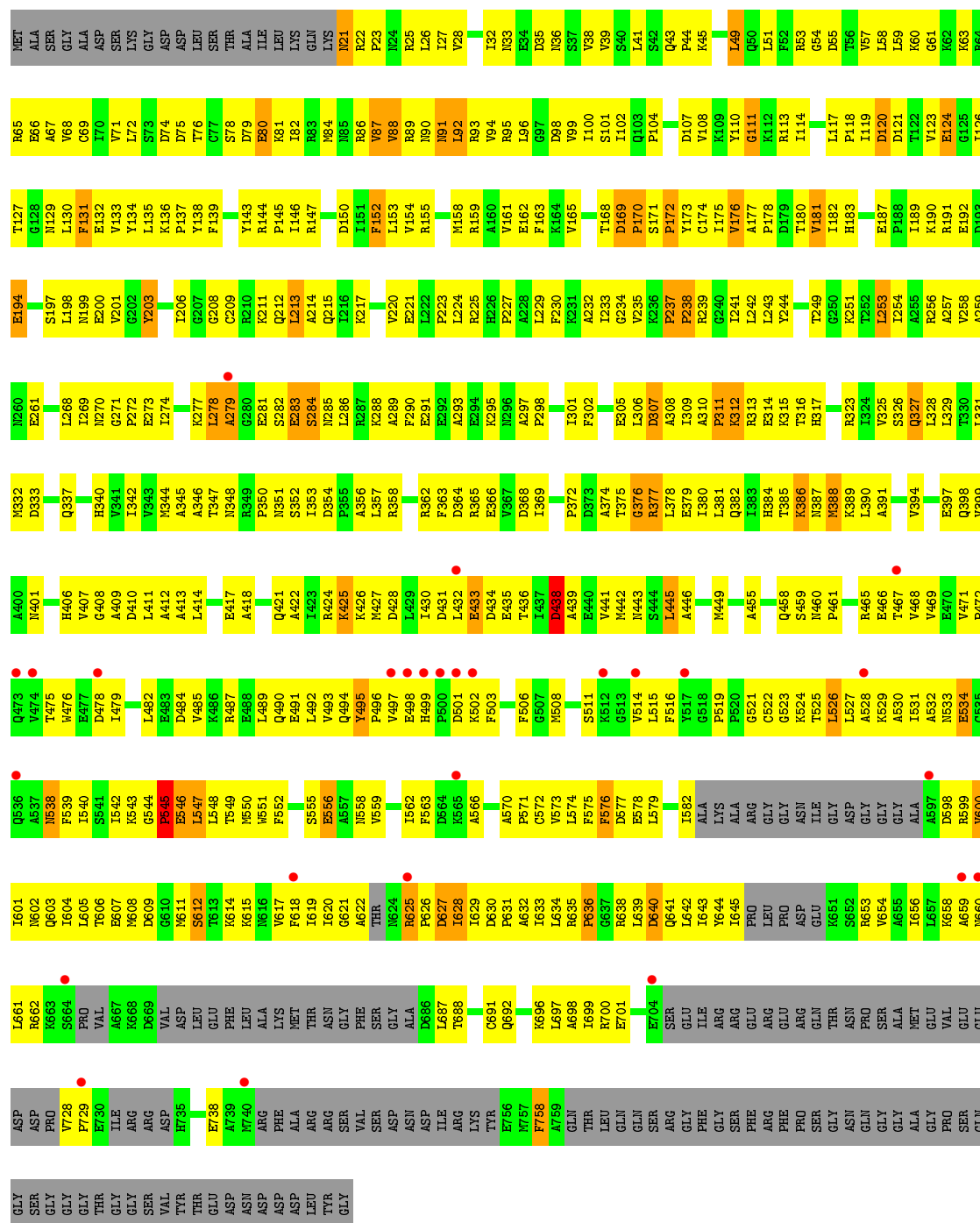


3 Residue-property plots

These plots are drawn for all protein, RNA and DNA chains in the entry. The first graphic for a chain summarises the proportions of errors displayed in the second graphic. The second graphic shows the sequence view annotated by issues in geometry and electron density. Residues are color-coded according to the number of geometric quality criteria for which they contain at least one outlier: green = 0, yellow = 1, orange = 2 and red = 3 or more. A red dot above a residue indicates a poor fit to the electron density ($RSRZ > 2$). Stretches of 2 or more consecutive residues without any outlier are shown as a green connector. Residues present in the sample, but not in the model, are shown in grey.

- Molecule 1: Transitional endoplasmic reticulum ATPase





Chain C: ■ 3% ■ 26% ■ 49% ■ 7% ■ 18%

Chain D:

Amino Acid Type	Percentage
MET	4%
ALA	
SER	
GLY	
ALA	26%
ASP	
SER	
LVS	
GLY	
ASP	
ASP	
LEU	
SER	
THR	
ALA	49%
IIE	
LEU	
LVS	
GLN	
LVS	
N21	
N22	
P23	
P23	
I24	7%
R25	
L26	
I27	
I27	
V28	
I32	
N33	
E34	
D35	
N36	18%
S37	
V38	
V39	
S40	
L41	
S42	
Q43	
P44	
K45	
L49	18%
Q50	
L51	
F52	
R53	
G54	
D55	
T56	
V57	
L58	
L59	18%
K60	
G61	
K62	
K63	18%
K64	



4 Data and refinement statistics

Property	Value	Source
Space group	P 3	Depositor
Cell constants a, b, c, α , β , γ	144.90Å 144.90Å 164.40Å 90.00° 90.00° 120.00°	Depositor
Resolution (Å)	23.00 – 3.50 22.79 – 3.20	Depositor EDS
% Data completeness (in resolution range)	99.6 (23.00-3.50) 90.8 (22.79-3.20)	Depositor EDS
R_{merge}	0.12	Depositor
R_{sym}	(Not available)	Depositor
$\langle I/\sigma(I) \rangle$ ¹	1.22 (at 3.23Å)	Xtriage
Refinement program	CNS 1.2	Depositor
R, R_{free}	0.271 , 0.285 0.289 , 0.291	Depositor DCC
R_{free} test set	2402 reflections (4.96%)	DCC
Wilson B-factor (Å ²)	75.9	Xtriage
Anisotropy	0.841	Xtriage
Bulk solvent k_{sol} (e/Å ³), B_{sol} (Å ²)	0.28 , 72.8	EDS
Estimated twinning fraction	0.369 for -h,-k,l 0.377 for h,-h-k,-l 0.369 for -k,-h,-l	Xtriage
L-test for twinning ²	$\langle L \rangle = 0.44$, $\langle L^2 \rangle = 0.27$	Xtriage
Outliers	0 of 126399 reflections	Xtriage
F_o, F_c correlation	0.89	EDS
Total number of atoms	20917	wwPDB-VP
Average B, all atoms (Å ²)	148.0	wwPDB-VP

Xtriage's analysis on translational NCS is as follows: *The largest off-origin peak in the Patterson function is 6.63% of the height of the origin peak. No significant pseudotranslation is detected.*

¹Intensities estimated from amplitudes.

²Theoretical values of $\langle |L| \rangle$, $\langle L^2 \rangle$ for acentric reflections are 0.5, 0.375 respectively for untwinned datasets, and 0.333, 0.2 for perfectly twinned datasets.

5 Model quality [i](#)

5.1 Standard geometry [i](#)

Bond lengths and bond angles in the following residue types are not validated in this section: ANP, ADP

The Z score for a bond length (or angle) is the number of standard deviations the observed value is removed from the expected value. A bond length (or angle) with $|Z| > 5$ is considered an outlier worth inspection. RMSZ is the root-mean-square of all Z scores of the bond lengths (or angles).

Mol	Chain	Bond lengths		Bond angles	
		RMSZ	$\# Z > 5$	RMSZ	$\# Z > 5$
1	A	0.48	2/5250 (0.0%)	0.67	1/7082 (0.0%)
1	B	0.48	2/5250 (0.0%)	0.67	1/7082 (0.0%)
1	C	0.48	2/5250 (0.0%)	0.67	1/7082 (0.0%)
1	D	0.48	2/5247 (0.0%)	0.67	1/7078 (0.0%)
All	All	0.48	8/20997 (0.0%)	0.67	4/28324 (0.0%)

Chiral center outliers are detected by calculating the chiral volume of a chiral center and verifying if the center is modelled as a planar moiety or with the opposite hand. A planarity outlier is detected by checking planarity of atoms in a peptide group, atoms in a mainchain group or atoms of a sidechain that are expected to be planar.

Mol	Chain	#Chirality outliers	#Planarity outliers
1	A	0	2
1	B	0	2
1	C	0	2
1	D	0	2
All	All	0	8

The worst 5 of 8 bond length outliers are listed below:

Mol	Chain	Res	Type	Atoms	Z	Observed(Å)	Ideal(Å)
1	B	425	LYS	C-N	-12.18	1.06	1.34
1	C	425	LYS	C-N	-12.14	1.06	1.34
1	D	425	LYS	C-N	-12.14	1.06	1.34
1	A	425	LYS	C-N	-12.14	1.06	1.34
1	B	438	ASP	C-N	-7.39	1.17	1.34

All (4) bond angle outliers are listed below:

Mol	Chain	Res	Type	Atoms	Z	Observed(°)	Ideal(°)
1	D	538	ASN	O-C-N	5.67	131.78	122.70
1	B	538	ASN	O-C-N	5.66	131.75	122.70
1	C	538	ASN	O-C-N	5.65	131.74	122.70
1	A	538	ASN	O-C-N	5.64	131.72	122.70

There are no chirality outliers.

5 of 8 planarity outliers are listed below:

Mol	Chain	Res	Type	Group
1	A	433	GLU	Peptide
1	A	545	PRO	Peptide
1	B	433	GLU	Peptide
1	B	545	PRO	Peptide
1	C	433	GLU	Peptide

5.2 Too-close contacts [i](#)

In the following table, the Non-H and H(model) columns list the number of non-hydrogen atoms and hydrogen atoms in the chain respectively. The H(added) column lists the number of hydrogen atoms added and optimized by MolProbity. The Clashes column lists the number of clashes within the asymmetric unit, whereas Symm-Clashes lists symmetry related clashes.

Mol	Chain	Non-H	H(model)	H(added)	Clashes	Symm-Clashes
1	A	5172	0	5238	723	39
1	B	5172	0	5236	728	39
1	C	5172	0	5238	730	38
1	D	5169	0	5226	719	38
2	A	27	0	12	3	0
2	B	27	0	12	3	0
2	C	27	0	12	3	0
2	D	27	0	12	3	0
3	A	31	0	13	1	0
3	B	31	0	13	1	0
3	C	31	0	13	1	0
3	D	31	0	13	1	0
All	All	20917	0	21038	2616	77

The all-atom clashscore is defined as the number of clashes found per 1000 atoms (including hydrogen atoms). The all-atom clashscore for this structure is 62.

The worst 5 of 2616 close contacts within the same asymmetric unit are listed below, sorted by their clash magnitude.

Atom-1	Atom-2	Interatomic distance (Å)	Clash overlap (Å)
1:A:699:ILE:HG12	1:B:506:PHE:CG	1.22	1.67
1:C:699:ILE:HG12	1:D:506:PHE:CG	1.29	1.66
1:A:549:THR:CB	1:B:602:ASN:HD22	1.13	1.57
1:C:549:THR:CB	1:D:602:ASN:HD22	1.14	1.57
1:A:550:MET:HG3	1:B:606:THR:CB	1.41	1.50

The worst 5 of 77 symmetry-related close contacts are listed below. The label for Atom-2 includes the symmetry operator and encoded unit-cell translations to be applied.

Atom-1	Atom-2	Interatomic distance (Å)	Clash overlap (Å)
1:C:491:GLU:OE1	1:D:700:ARG:CD[2_765]	0.38	1.82
1:A:491:GLU:OE2	1:B:700:ARG:NH1[3_765]	0.38	1.82
1:C:491:GLU:OE2	1:D:700:ARG:NH1[2_765]	0.40	1.80
1:A:491:GLU:OE1	1:B:700:ARG:CD[3_765]	0.41	1.79
1:C:25:ARG:NH2	1:D:432:LEU:C[2_765]	0.80	1.40

5.3 Torsion angles ⓘ

5.3.1 Protein backbone ⓘ

In the following table, the Percentiles column shows the percent Ramachandran outliers of the chain as a percentile score with respect to all X-ray entries followed by that with respect to entries of similar resolution.

The Analysed column shows the number of residues for which the backbone conformation was analysed, and the total number of residues.

Mol	Chain	Analysed	Favoured	Allowed	Outliers	Percentiles	
1	A	641/806 (80%)	471 (74%)	130 (20%)	40 (6%)	2	21
1	B	641/806 (80%)	470 (73%)	131 (20%)	40 (6%)	2	21
1	C	641/806 (80%)	471 (74%)	130 (20%)	40 (6%)	2	21
1	D	641/806 (80%)	470 (73%)	131 (20%)	40 (6%)	2	21
All	All	2564/3224 (80%)	1882 (73%)	522 (20%)	160 (6%)	2	21

5 of 160 Ramachandran outliers are listed below:

Mol	Chain	Res	Type
1	A	87	VAL
1	A	312	LYS

Continued on next page...

Continued from previous page...

Mol	Chain	Res	Type
1	B	87	VAL
1	B	312	LYS
1	C	87	VAL

5.3.2 Protein sidechains ⓘ

In the following table, the Percentiles column shows the percent sidechain outliers of the chain as a percentile score with respect to all X-ray entries followed by that with respect to entries of similar resolution.

The Analysed column shows the number of residues for which the sidechain conformation was analysed, and the total number of residues.

Mol	Chain	Analysed	Rotameric	Outliers	Percentiles	
1	A	565/678 (83%)	538 (95%)	27 (5%)	31	71
1	B	565/678 (83%)	538 (95%)	27 (5%)	31	71
1	C	565/678 (83%)	538 (95%)	27 (5%)	31	71
1	D	564/678 (83%)	537 (95%)	27 (5%)	31	71
All	All	2259/2712 (83%)	2151 (95%)	108 (5%)	31	71

5 of 108 residues with a non-rotameric sidechain are listed below:

Mol	Chain	Res	Type
1	B	556	GLU
1	C	152	PHE
1	D	534	GLU
1	B	625	ARG
1	C	21	ASN

Some sidechains can be flipped to improve hydrogen bonding and reduce clashes. 5 of 62 such sidechains are listed below:

Mol	Chain	Res	Type
1	B	533	ASN
1	C	212	GLN
1	D	406	HIS
1	C	91	ASN
1	C	285	ASN

5.3.3 RNA ⓘ

There are no RNA molecules in this entry.

5.4 Non-standard residues in protein, DNA, RNA chains ⓘ

There are no non-standard protein/DNA/RNA residues in this entry.

5.5 Carbohydrates ⓘ

There are no carbohydrates in this entry.

5.6 Ligand geometry ⓘ

8 ligands are modelled in this entry.

In the following table, the Counts columns list the number of bonds (or angles) for which Mogul statistics could be retrieved, the number of bonds (or angles) that are observed in the model and the number of bonds (or angles) that are defined in the chemical component dictionary. The Link column lists molecule types, if any, to which the group is linked. The Z score for a bond length (or angle) is the number of standard deviations the observed value is removed from the expected value. A bond length (or angle) with $|Z| > 2$ is considered an outlier worth inspection. RMSZ is the root-mean-square of all Z scores of the bond lengths (or angles).

Mol	Type	Chain	Res	Link	Bond lengths			Bond angles		
					Counts	RMSZ	$\# Z > 2$	Counts	RMSZ	$\# Z > 2$
2	ADP	A	807	-	22,29,29	1.48	4 (18%)	27,45,45	2.96	5 (18%)
3	ANP	A	901	-	27,33,33	2.22	11 (40%)	30,52,52	2.85	6 (20%)
2	ADP	B	807	-	22,29,29	1.48	4 (18%)	27,45,45	2.96	5 (18%)
3	ANP	B	901	-	27,33,33	2.22	11 (40%)	30,52,52	2.86	6 (20%)
2	ADP	C	807	-	22,29,29	1.48	4 (18%)	27,45,45	2.97	5 (18%)
3	ANP	C	901	-	27,33,33	2.22	11 (40%)	30,52,52	2.85	6 (20%)
2	ADP	D	807	-	22,29,29	1.48	4 (18%)	27,45,45	2.96	5 (18%)
3	ANP	D	901	-	27,33,33	2.22	10 (37%)	30,52,52	2.86	6 (20%)

In the following table, the Chirals column lists the number of chiral outliers, the number of chiral centers analysed, the number of these observed in the model and the number defined in the chemical component dictionary. Similar counts are reported in the Torsion and Rings columns. '-' means no outliers of that kind were identified.

Mol	Type	Chain	Res	Link	Chirals	Torsions	Rings
2	ADP	A	807	-	-	0/12/32/32	0/3/3/3
3	ANP	A	901	-	-	0/12/38/38	0/3/3/3
2	ADP	B	807	-	-	0/12/32/32	0/3/3/3
3	ANP	B	901	-	-	0/12/38/38	0/3/3/3
2	ADP	C	807	-	-	0/12/32/32	0/3/3/3
3	ANP	C	901	-	-	0/12/38/38	0/3/3/3
2	ADP	D	807	-	-	0/12/32/32	0/3/3/3
3	ANP	D	901	-	-	0/12/38/38	0/3/3/3

The worst 5 of 59 bond length outliers are listed below:

Mol	Chain	Res	Type	Atoms	Z	Observed(Å)	Ideal(Å)
3	B	901	ANP	PB-N3B	-4.41	1.51	1.63
3	C	901	ANP	PB-N3B	-4.40	1.51	1.63
3	A	901	ANP	PB-N3B	-4.39	1.51	1.63
3	D	901	ANP	PB-N3B	-4.38	1.51	1.63
3	B	901	ANP	PG-N3B	-4.21	1.52	1.63

The worst 5 of 44 bond angle outliers are listed below:

Mol	Chain	Res	Type	Atoms	Z	Observed(°)	Ideal(°)
2	C	807	ADP	N3-C2-N1	-14.15	118.06	128.89
2	A	807	ADP	N3-C2-N1	-14.13	118.07	128.89
2	D	807	ADP	N3-C2-N1	-14.12	118.08	128.89
2	B	807	ADP	N3-C2-N1	-14.09	118.11	128.89
3	B	901	ANP	N3-C2-N1	-14.05	118.14	128.89

There are no chirality outliers.

There are no torsion outliers.

There are no ring outliers.

8 monomers are involved in 16 short contacts:

Mol	Chain	Res	Type	Clashes	Symm-Clashes
2	A	807	ADP	3	0
3	A	901	ANP	1	0
2	B	807	ADP	3	0
3	B	901	ANP	1	0
2	C	807	ADP	3	0
3	C	901	ANP	1	0
2	D	807	ADP	3	0
3	D	901	ANP	1	0

5.7 Other polymers [i](#)

There are no such residues in this entry.

5.8 Polymer linkage issues [i](#)

There are no chain breaks in this entry.

6 Fit of model and data [i](#)

6.1 Protein, DNA and RNA chains [i](#)

In the following table, the column labelled ‘#RSRZ> 2’ contains the number (and percentage) of RSRZ outliers, followed by percent RSRZ outliers for the chain as percentile scores relative to all X-ray entries and entries of similar resolution. The OWAB column contains the minimum, median, 95th percentile and maximum values of the occupancy-weighted average B-factor per residue. The column labelled ‘Q< 0.9’ lists the number of (and percentage) of residues with an average occupancy less than 0.9.

Mol	Chain	Analysed	<RSRZ>	#RSRZ>2			OWAB(Å ²)	Q<0.9
1	A	659/806 (81%)	0.08	29 (4%)	38	29	17, 128, 281, 412	0
1	B	659/806 (81%)	0.12	27 (4%)	41	32	17, 128, 281, 412	0
1	C	659/806 (81%)	0.07	25 (3%)	44	36	17, 128, 281, 412	0
1	D	659/806 (81%)	0.08	32 (4%)	33	25	17, 128, 281, 412	0
All	All	2636/3224 (81%)	0.09	113 (4%)	39	30	17, 128, 281, 412	0

The worst 5 of 113 RSRZ outliers are listed below:

Mol	Chain	Res	Type	RSRZ
1	B	660	ASN	7.9
1	B	498	GLU	6.4
1	A	498	GLU	6.1
1	D	618	PHE	5.8
1	B	478	ASP	5.7

6.2 Non-standard residues in protein, DNA, RNA chains [i](#)

There are no non-standard protein/DNA/RNA residues in this entry.

6.3 Carbohydrates [i](#)

There are no carbohydrates in this entry.

6.4 Ligands [i](#)

In the following table, the Atoms column lists the number of modelled atoms in the group and the number defined in the chemical component dictionary. LLDF column lists the quality of electron density of the group with respect to its neighbouring residues in protein, DNA or RNA chains. The B-factors column lists the minimum, median, 95th percentile and maximum values of B factors

of atoms in the group. The column labelled 'Q< 0.9' lists the number of atoms with occupancy less than 0.9.

Mol	Type	Chain	Res	Atoms	RSCC	RSR	LLDF	B-factors(\AA^2)	Q<0.9
2	ADP	D	807	27/27	0.90	0.31	0.83	163,163,163,163	0
2	ADP	C	807	27/27	0.91	0.32	0.75	163,163,163,163	0
2	ADP	A	807	27/27	0.91	0.34	0.68	163,163,163,163	0
2	ADP	B	807	27/27	0.91	0.33	0.65	163,163,163,163	0
3	ANP	A	901	31/31	0.89	0.22	-0.42	150,150,150,150	0
3	ANP	D	901	31/31	0.80	0.20	-0.44	150,150,150,150	0
3	ANP	C	901	31/31	0.84	0.20	-0.50	150,150,150,150	0
3	ANP	B	901	31/31	0.86	0.19	-0.55	150,150,150,150	0

6.5 Other polymers [i](#)

There are no such residues in this entry.