



Full wwPDB X-ray Structure Validation Report ⓘ

Feb 1, 2016 – 03:30 PM GMT

PDB ID : 4CF7
Title : Crystal structure of adenylate kinase from Aquifex aeolicus with MgADP bound
Authors : Kerns, S.J.; Agafonov, R.V.; Cho, Y.-J.; Pontiggia, F.; Otten, R.; Pachov, D.V.; Kutter, S.; Phung, L.A.; Murphy, P.N.; Thai, V.; Hagan, M.F.; Kern, D.
Deposited on : 2013-11-13
Resolution : 1.59 Å(reported)

This is a Full wwPDB X-ray Structure Validation Report for a publicly released PDB entry.
We welcome your comments at validation@mail.wwpdb.org
A user guide is available at
<http://wwpdb.org/validation/2016/XrayValidationReportHelp>
with specific help available everywhere you see the ⓘ symbol.

The following versions of software and data (see [references ⓘ](#)) were used in the production of this report:

MolProbity : 4.02b-467
Mogul : 1.7 (RC4), CSD as536be (2015)
Xtriage (Phenix) : 1.9-1692
EDS : rb-20026688
Percentile statistics : 20151230.v01 (using entries in the PDB archive December 30th 2015)
Refmac : 5.8.0135
CCP4 : 6.5.0
Ideal geometry (proteins) : Engh & Huber (2001)
Ideal geometry (DNA, RNA) : Parkinson et al. (1996)
Validation Pipeline (wwPDB-VP) : trunk26865

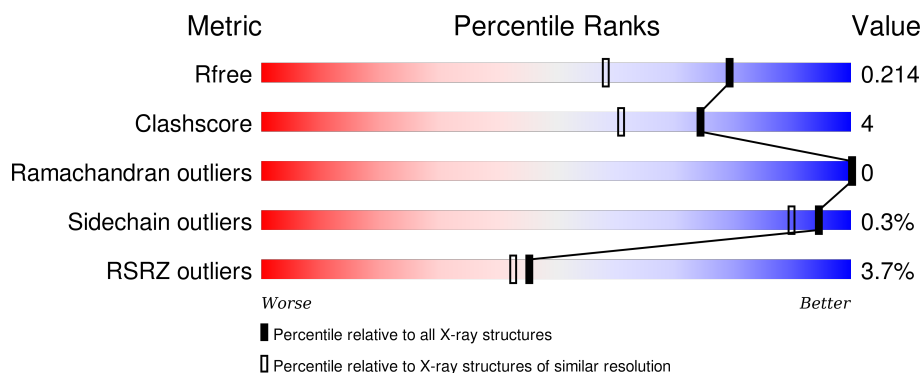
1 Overall quality at a glance

The following experimental techniques were used to determine the structure:

X-RAY DIFFRACTION



The reported resolution of this entry is 1.59 Å.

Percentile scores (ranging between 0-100) for global validation metrics of the entry are shown in the following graphic. The table shows the number of entries on which the scores are based.



Metric	Whole archive (#Entries)	Similar resolution (#Entries, resolution range(Å))
R_{free}	91344	2475 (1.60-1.60)
Clashscore	102246	2732 (1.60-1.60)
Ramachandran outliers	100387	2654 (1.60-1.60)
Sidechain outliers	100360	2653 (1.60-1.60)
RSRZ outliers	91569	2479 (1.60-1.60)

The table below summarises the geometric issues observed across the polymeric chains and their fit to the electron density. The red, orange, yellow and green segments on the lower bar indicate the fraction of residues that contain outliers for ≥ 3 , 2, 1 and 0 types of geometric quality criteria. A grey segment represents the fraction of residues that are not modelled. The numeric value for each fraction is indicated below the corresponding segment, with a dot representing fractions $\leq 5\%$. The upper red bar (where present) indicates the fraction of residues that have poor fit to the electron density. The numeric value is given above the bar.

Mol	Chain	Length	Quality of chain
1	A	206	 90% 9% .
1	B	206	 7% 90% 9% .

2 Entry composition [i](#)

There are 5 unique types of molecules in this entry. The entry contains 3794 atoms, of which 0 are hydrogens and 0 are deuteriums.

In the tables below, the ZeroOcc column contains the number of atoms modelled with zero occupancy, the AltConf column contains the number of residues with at least one atom in alternate conformation and the Trace column contains the number of residues modelled with at most 2 atoms.

- Molecule 1 is a protein called ADENYLATE KINASE.

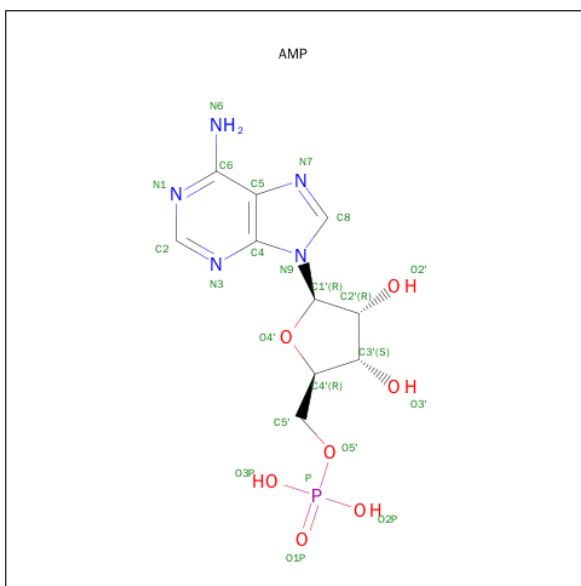
Mol	Chain	Residues	Atoms					ZeroOcc	AltConf	Trace
1	A	203	Total	C	N	O	S	0	4	0
			1637	1059	278	297	3			
1	B	203	Total	C	N	O	S	0	8	0
			1663	1078	284	297	4			

- Molecule 2 is ADENOSINE-5'-DIPHOSPHATE (three-letter code: ADP) (formula: $C_{10}H_{15}N_5O_{10}P_2$).



Mol	Chain	Residues	Atoms					ZeroOcc	AltConf
2	A	1	Total	C	N	O	P	0	0
			27	10	5	10	2		
2	A	1	Total	C	N	O	P	0	1
			54	20	10	20	4		
2	B	1	Total	C	N	O	P	0	0
			27	10	5	10	2		
2	B	1	Total	C	N	O	P	0	1
			27	10	5	10	2		

- Molecule 3 is ADENOSINE MONOPHOSPHATE (three-letter code: AMP) (formula: $C_{10}H_{14}N_5O_7P$).



Mol	Chain	Residues	Atoms					ZeroOcc	AltConf
3	B	1	Total	C	N	O	P	0	1
			23	10	5	7	1		

- Molecule 4 is MAGNESIUM ION (three-letter code: MG) (formula: Mg).

Mol	Chain	Residues	Atoms		ZeroOcc	AltConf
4	B	1	Total	Mg	0	0
			1	1		


- Molecule 5 is water.

Mol	Chain	Residues	Atoms		ZeroOcc	AltConf
5	A	199	Total	O	0	0
			199	199		
5	B	135	Total	O	0	1
			136	136		

3 Residue-property plots [i](#)

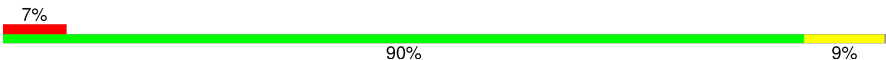
These plots are drawn for all protein, RNA and DNA chains in the entry. The first graphic for a chain summarises the proportions of errors displayed in the second graphic. The second graphic shows the sequence view annotated by issues in geometry and electron density. Residues are color-coded according to the number of geometric quality criteria for which they contain at least one outlier: green = 0, yellow = 1, orange = 2 and red = 3 or more. A red dot above a residue indicates a poor fit to the electron density ($RSRZ > 2$). Stretches of 2 or more consecutive residues without any outlier are shown as a green connector. Residues present in the sample, but not in the model, are shown in grey.

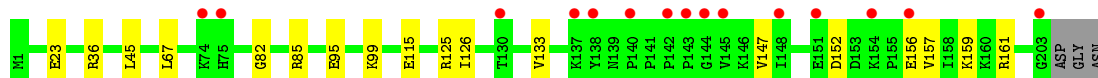
● Molecule 1: ADENYLATE KINASE

Chain A: 



● Molecule 1: ADENYLATE KINASE

Chain B: 



4 Data and refinement statistics

Property	Value	Source
Space group	P 21 21 21	Depositor
Cell constants a, b, c, α , β , γ	64.09 Å 64.70 Å 86.26 Å 90.00° 90.00° 90.00°	Depositor
Resolution (Å)	40.27 – 1.59 40.27 – 1.59	Depositor EDS
% Data completeness (in resolution range)	99.9 (40.27-1.59) 96.6 (40.27-1.59)	Depositor EDS
R_{merge}	0.09	Depositor
R_{sym}	(Not available)	Depositor
$\langle I/\sigma(I) \rangle$ ¹	3.34 (at 1.59 Å)	Xtriage
Refinement program	PHENIX (PHENIX.REFINE)	Depositor
R, R_{free}	0.182 , 0.216 0.181 , 0.214	Depositor DCC
R_{free} test set	1003 reflections (2.14%)	DCC
Wilson B-factor (Å ²)	14.9	Xtriage
Anisotropy	0.443	Xtriage
Bulk solvent k_{sol} (e/Å ³), B_{sol} (Å ²)	0.38 , 48.5	EDS
Estimated twinning fraction	0.021 for k,h,-l	Xtriage
L-test for twinning ²	$\langle L \rangle = 0.48$, $\langle L^2 \rangle = 0.31$	Xtriage
Outliers	0 of 48568 reflections	Xtriage
F_o, F_c correlation	0.96	EDS
Total number of atoms	3794	wwPDB-VP
Average B, all atoms (Å ²)	20.0	wwPDB-VP

Xtriage's analysis on translational NCS is as follows: *The largest off-origin peak in the Patterson function is 6.25% of the height of the origin peak. No significant pseudotranslation is detected.*

¹Intensities estimated from amplitudes.

²Theoretical values of $\langle |L| \rangle$, $\langle L^2 \rangle$ for acentric reflections are 0.5, 0.375 respectively for untwinned datasets, and 0.333, 0.2 for perfectly twinned datasets.

5 Model quality ⓘ

5.1 Standard geometry ⓘ

Bond lengths and bond angles in the following residue types are not validated in this section: AMP, MG, ADP

The Z score for a bond length (or angle) is the number of standard deviations the observed value is removed from the expected value. A bond length (or angle) with $|Z| > 5$ is considered an outlier worth inspection. RMSZ is the root-mean-square of all Z scores of the bond lengths (or angles).

Mol	Chain	Bond lengths		Bond angles	
		RMSZ	# Z >5	RMSZ	# Z >5
1	A	0.35	0/1680	0.52	0/2265
1	B	0.34	0/1718	0.51	0/2314
All	All	0.34	0/3398	0.51	0/4579

There are no bond length outliers.

There are no bond angle outliers.

There are no chirality outliers.

There are no planarity outliers.

5.2 Too-close contacts ⓘ

In the following table, the Non-H and H(model) columns list the number of non-hydrogen atoms and hydrogen atoms in the chain respectively. The H(added) column lists the number of hydrogen atoms added and optimized by MolProbity. The Clashes column lists the number of clashes within the asymmetric unit, whereas Symm-Clashes lists symmetry related clashes.

Mol	Chain	Non-H	H(model)	H(added)	Clashes	Symm-Clashes
1	A	1637	0	1728	13	0
1	B	1663	0	1774	15	0
2	A	81	0	36	5	0
2	B	54	0	24	0	0
3	B	23	0	12	2	0
4	B	1	0	0	0	0
5	A	199	0	0	2	1
5	B	136	0	0	1	1
All	All	3794	0	3574	28	1

The all-atom clashscore is defined as the number of clashes found per 1000 atoms (including hydrogen atoms). The all-atom clashscore for this structure is 4.

All (28) close contacts within the same asymmetric unit are listed below, sorted by their clash magnitude.

Atom-1	Atom-2	Interatomic distance (Å)	Clash overlap (Å)
1:A:150:ARG:NH2	2:A:1205[B]:ADP:O2B	2.04	0.90
1:A:161:ARG:NH2	2:A:1205[A]:ADP:O3B	2.17	0.77
1:A:129:GLU:OE2	1:B:159:LYS:HE3	1.91	0.70
1:B:36:ARG:NH1	3:B:1206[B]:AMP:O3P	2.33	0.61
1:B:156:GLU:CD	1:B:156:GLU:H	2.07	0.57
1:A:36:ARG:HD3	5:A:2052:HOH:O	2.07	0.54
2:A:1205[A]:ADP:O2B	5:A:2011:HOH:O	2.18	0.54
1:A:94:ASP:OD2	1:A:179:LYS:NZ	2.42	0.53
1:B:85[B]:ARG:NH2	3:B:1206[B]:AMP:O2P	2.39	0.53
1:B:45:LEU:HD21	1:B:67[B]:LEU:HD12	1.93	0.51
1:A:177:LYS:HG3	1:A:182:LEU:HD22	1.92	0.51
1:A:26:PHE:CD2	1:A:77:ASN:HB3	2.47	0.49
1:B:126[A]:ILE:HD11	1:B:133:VAL:HG22	1.95	0.49
1:B:95:GLU:O	1:B:99:LYS:HG2	2.13	0.48
1:B:159:LYS:HE2	1:B:159:LYS:HB3	1.75	0.47
1:B:115:GLU:CD	1:B:115:GLU:H	2.18	0.46
1:A:141:PRO:HA	1:A:142:PRO:HD3	1.84	0.46
1:B:85[B]:ARG:HH12	1:B:161[B]:ARG:NH2	2.15	0.44
1:B:157:VAL:O	1:B:161[B]:ARG:HG3	2.18	0.43
1:A:150:ARG:HH12	2:A:1205[B]:ADP:PB	2.41	0.43
1:B:125:ARG:HB3	1:B:147:VAL:HB	2.00	0.43
1:A:196:ARG:HD3	1:A:196:ARG:HA	1.86	0.42
1:B:82:GLY:O	1:B:85[B]:ARG:HG3	2.20	0.41
1:A:161:ARG:NH2	2:A:1205[B]:ADP:O2B	2.54	0.41
1:B:152:ASP:HA	1:B:157:VAL:HG11	2.02	0.41
1:A:114:ASP:HA	1:A:117:VAL:HG22	2.03	0.41
1:A:112:VAL:HA	1:A:113:PRO:HD3	1.96	0.40
1:B:23:GLU:HG3	5:B:2022:HOH:O	2.22	0.40

All (1) symmetry-related close contacts are listed below. The label for Atom-2 includes the symmetry operator and encoded unit-cell translations to be applied.

Atom-1	Atom-2	Interatomic distance (Å)	Clash overlap (Å)
5:A:2099:HOH:O	5:B:2078:HOH:O[4_555]	2.02	0.18

5.3 Torsion angles [i](#)

5.3.1 Protein backbone [i](#)

In the following table, the Percentiles column shows the percent Ramachandran outliers of the chain as a percentile score with respect to all X-ray entries followed by that with respect to entries of similar resolution.

The Analysed column shows the number of residues for which the backbone conformation was analysed, and the total number of residues.

Mol	Chain	Analysed	Favoured	Allowed	Outliers	Percentiles	
1	A	205/206 (100%)	203 (99%)	2 (1%)	0	100	100
1	B	209/206 (102%)	206 (99%)	3 (1%)	0	100	100
All	All	414/412 (100%)	409 (99%)	5 (1%)	0	100	100

There are no Ramachandran outliers to report.

5.3.2 Protein sidechains [i](#)

In the following table, the Percentiles column shows the percent sidechain outliers of the chain as a percentile score with respect to all X-ray entries followed by that with respect to entries of similar resolution.

The Analysed column shows the number of residues for which the sidechain conformation was analysed, and the total number of residues.

Mol	Chain	Analysed	Rotameric	Outliers	Percentiles	
1	A	180/178 (101%)	179 (99%)	1 (1%)	90	82
1	B	184/178 (103%)	184 (100%)	0	100	100
All	All	364/356 (102%)	363 (100%)	1 (0%)	94	90

All (1) residues with a non-rotameric sidechain are listed below:

Mol	Chain	Res	Type
1	A	72	PHE

Some sidechains can be flipped to improve hydrogen bonding and reduce clashes. There are no such sidechains identified.

5.3.3 RNA [i](#)

There are no RNA molecules in this entry.

5.4 Non-standard residues in protein, DNA, RNA chains ⓘ

There are no non-standard protein/DNA/RNA residues in this entry.

5.5 Carbohydrates ⓘ

There are no carbohydrates in this entry.

5.6 Ligand geometry ⓘ

Of 7 ligands modelled in this entry, 1 is monoatomic - leaving 6 for Mogul analysis.

In the following table, the Counts columns list the number of bonds (or angles) for which Mogul statistics could be retrieved, the number of bonds (or angles) that are observed in the model and the number of bonds (or angles) that are defined in the chemical component dictionary. The Link column lists molecule types, if any, to which the group is linked. The Z score for a bond length (or angle) is the number of standard deviations the observed value is removed from the expected value. A bond length (or angle) with $|Z| > 2$ is considered an outlier worth inspection. RMSZ is the root-mean-square of all Z scores of the bond lengths (or angles).

Mol	Type	Chain	Res	Link	Bond lengths			Bond angles		
					Counts	RMSZ	# $ Z > 2$	Counts	RMSZ	# $ Z > 2$
2	ADP	A	1204	-	22,29,29	0.99	2 (9%)	27,45,45	1.87	4 (14%)
2	ADP	A	1205[A]	-	22,29,29	0.99	1 (4%)	27,45,45	1.79	4 (14%)
2	ADP	A	1205[B]	-	22,29,29	0.99	1 (4%)	27,45,45	2.03	7 (25%)
2	ADP	B	1204	4	22,29,29	0.97	1 (4%)	27,45,45	1.87	5 (18%)
2	ADP	B	1205[A]	4	22,29,29	0.96	1 (4%)	27,45,45	1.83	3 (11%)
3	AMP	B	1206[B]	-	20,25,25	0.95	1 (5%)	22,38,38	1.80	2 (9%)

In the following table, the Chirals column lists the number of chiral outliers, the number of chiral centers analysed, the number of these observed in the model and the number defined in the chemical component dictionary. Similar counts are reported in the Torsion and Rings columns. '-' means no outliers of that kind were identified.

Mol	Type	Chain	Res	Link	Chirals	Torsions	Rings
2	ADP	A	1204	-	-	0/12/32/32	0/3/3/3
2	ADP	A	1205[A]	-	-	0/12/32/32	0/3/3/3
2	ADP	A	1205[B]	-	-	0/12/32/32	0/3/3/3
2	ADP	B	1204	4	-	0/12/32/32	0/3/3/3
2	ADP	B	1205[A]	4	-	0/12/32/32	0/3/3/3
3	AMP	B	1206[B]	-	-	0/6/26/26	0/3/3/3

All (7) bond length outliers are listed below:

Mol	Chain	Res	Type	Atoms	Z	Observed(Å)	Ideal(Å)
2	A	1204	ADP	O4'-C1'	2.02	1.43	1.41
2	A	1204	ADP	C5-C4	2.76	1.46	1.40
2	B	1205[A]	ADP	C5-C4	2.90	1.47	1.40
2	B	1204	ADP	C5-C4	2.91	1.47	1.40
3	B	1206[B]	AMP	C5-C4	3.11	1.47	1.40
2	A	1205[B]	ADP	C5-C4	3.13	1.47	1.40
2	A	1205[A]	ADP	C5-C4	3.14	1.47	1.40

All (25) bond angle outliers are listed below:

Mol	Chain	Res	Type	Atoms	Z	Observed(°)	Ideal(°)
2	B	1205[A]	ADP	N3-C2-N1	-7.52	123.14	128.89
2	B	1204	ADP	N3-C2-N1	-7.08	123.47	128.89
3	B	1206[B]	AMP	N3-C2-N1	-7.02	123.52	128.89
2	A	1204	ADP	N3-C2-N1	-6.90	123.61	128.89
2	A	1205[B]	ADP	N3-C2-N1	-6.81	123.68	128.89
2	A	1205[A]	ADP	N3-C2-N1	-6.66	123.80	128.89
2	A	1205[B]	ADP	PA-O3A-PB	-3.91	119.57	132.67
2	B	1204	ADP	C4-C5-N7	-3.25	106.49	109.48
2	A	1205[B]	ADP	C2'-C1'-N9	-3.07	109.61	114.29
2	A	1205[B]	ADP	O3A-PA-O5'	-3.03	94.89	102.94
2	A	1205[A]	ADP	C2'-C1'-N9	-3.00	109.71	114.29
2	A	1205[A]	ADP	C4-C5-N7	-2.93	106.79	109.48
2	A	1204	ADP	O4'-C1'-N9	-2.91	102.01	108.10
2	B	1205[A]	ADP	C2'-C1'-N9	-2.82	109.99	114.29
2	A	1205[B]	ADP	C4-C5-N7	-2.81	106.89	109.48
3	B	1206[B]	AMP	C4-C5-N7	-2.80	106.90	109.48
2	A	1204	ADP	C1'-N9-C4	-2.70	122.87	126.94
2	B	1204	ADP	C1'-N9-C4	-2.69	122.89	126.94
2	A	1205[A]	ADP	PA-O3A-PB	-2.33	124.86	132.67
2	B	1205[A]	ADP	C4-C5-N7	-2.30	107.36	109.48
2	A	1204	ADP	C4-C5-N7	-2.25	107.41	109.48
2	B	1204	ADP	O4'-C1'-N9	-2.04	103.83	108.10
2	A	1205[B]	ADP	C2-N1-C6	2.11	122.54	118.77
2	B	1204	ADP	C2-N1-C6	2.12	122.55	118.77
2	A	1205[B]	ADP	O3B-PB-O2B	2.74	117.82	107.38

There are no chirality outliers.

There are no torsion outliers.

There are no ring outliers.

3 monomers are involved in 7 short contacts:

Mol	Chain	Res	Type	Clashes	Symm-Clashes
2	A	1205[A]	ADP	2	0
2	A	1205[B]	ADP	3	0
3	B	1206[B]	AMP	2	0

5.7 Other polymers [i](#)

There are no such residues in this entry.

5.8 Polymer linkage issues [i](#)

There are no chain breaks in this entry.

6 Fit of model and data [i](#)

6.1 Protein, DNA and RNA chains [i](#)

In the following table, the column labelled ‘#RSRZ> 2’ contains the number (and percentage) of RSRZ outliers, followed by percent RSRZ outliers for the chain as percentile scores relative to all X-ray entries and entries of similar resolution. The OWAB column contains the minimum, median, 95th percentile and maximum values of the occupancy-weighted average B-factor per residue. The column labelled ‘Q< 0.9’ lists the number of (and percentage) of residues with an average occupancy less than 0.9.

Mol	Chain	Analysed	<RSRZ>	#RSRZ>2	OWAB(Å ²)	Q<0.9
1	A	203/206 (98%)	-0.18	0 100 100	9, 16, 29, 41	0
1	B	203/206 (98%)	0.29	15 (7%) 17 15	10, 21, 42, 57	0
All	All	406/412 (98%)	0.05	15 (3%) 45 43	9, 18, 39, 57	0

All (15) RSRZ outliers are listed below:

Mol	Chain	Res	Type	RSRZ
1	B	142	PRO	6.8
1	B	145	VAL	5.3
1	B	75	HIS	4.3
1	B	144	GLY	3.6
1	B	137	LYS	3.6
1	B	74	LYS	2.9
1	B	156	GLU	2.7
1	B	140	PRO	2.5
1	B	143	PRO	2.4
1	B	154	LYS	2.3
1	B	130	THR	2.3
1	B	138	TYR	2.2
1	B	203	GLY	2.2
1	B	151	GLU	2.1
1	B	148	ILE	2.1

6.2 Non-standard residues in protein, DNA, RNA chains [i](#)

There are no non-standard protein/DNA/RNA residues in this entry.

6.3 Carbohydrates [i](#)

There are no carbohydrates in this entry.

6.4 Ligands [i](#)

In the following table, the Atoms column lists the number of modelled atoms in the group and the number defined in the chemical component dictionary. LLDF column lists the quality of electron density of the group with respect to its neighbouring residues in protein, DNA or RNA chains. The B-factors column lists the minimum, median, 95th percentile and maximum values of B factors of atoms in the group. The column labelled 'Q< 0.9' lists the number of atoms with occupancy less than 0.9.

Mol	Type	Chain	Res	Atoms	RSCC	RSR	LLDF	B-factors(\AA^2)	Q<0.9
2	ADP	A	1205[A]	27/27	0.96	0.09	0.64	9,10,21,25	27
2	ADP	A	1205[B]	27/27	0.96	0.09	0.62	9,10,24,25	27
2	ADP	B	1205[A]	27/27	0.97	0.09	0.32	7,10,21,24	27
3	AMP	B	1206[B]	23/23	0.98	0.09	0.20	8,10,14,16	23
2	ADP	A	1204	27/27	0.98	0.07	-0.36	7,11,12,16	0
2	ADP	B	1204	27/27	0.98	0.07	-0.76	13,18,21,22	0
4	MG	B	1207	1/1	0.98	0.20	-	27,27,27,27	0

6.5 Other polymers [i](#)

There are no such residues in this entry.