



wwPDB X-ray Structure Validation Summary Report ⓘ

Feb 1, 2016 – 03:30 PM GMT

PDB ID : 4CFW
Title : Structure-based design of C8-substituted O6-cyclohexylmethoxyguanine CDK1 and 2 inhibitors.
Authors : Carbain, B.; Paterson, D.J.; Anscombe, E.; Campbell, A.; Cano, C.; Echaliér, A.; Endicott, J.; Golding, B.T.; Haggerty, K.; Hardcastle, I.R.; Jewsbury, P.; Newell, D.R.; Noble, M.E.M.; Roche, C.; Wang, L.Z.; Griffin, R.
Deposited on : 2013-11-19
Resolution : 2.45 Å(reported)

This is a wwPDB X-ray Structure Validation Summary Report for a publicly released PDB entry.

We welcome your comments at validation@mail.wwpdb.org

A user guide is available at

<http://wwpdb.org/validation/2016/XrayValidationReportHelp>

with specific help available everywhere you see the ⓘ symbol.

The following versions of software and data (see [references ⓘ](#)) were used in the production of this report:

MolProbity	:	4.02b-467
Mogul	:	1.7 (RC4), CSD as536be (2015)
Xtriage (Phenix)	:	1.9-1692
EDS	:	rb-20026688
Percentile statistics	:	20151230.v01 (using entries in the PDB archive December 30th 2015)
Refmac	:	5.8.0135
CCP4	:	6.5.0
Ideal geometry (proteins)	:	Engh & Huber (2001)
Ideal geometry (DNA, RNA)	:	Parkinson et al. (1996)
Validation Pipeline (wwPDB-VP)	:	trunk26865

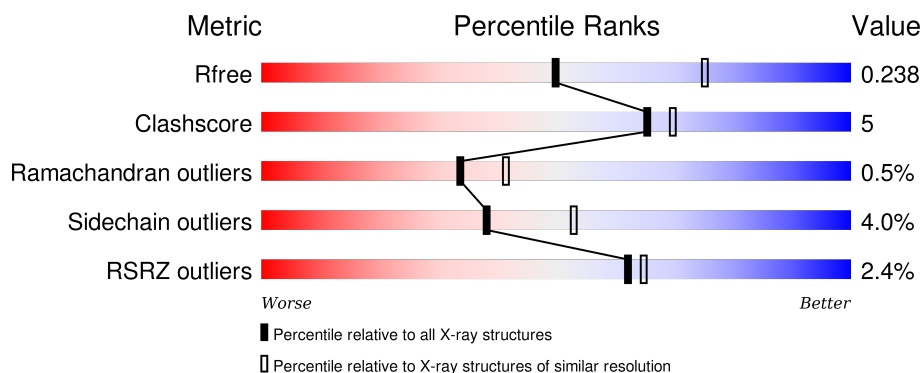
1 Overall quality at a glance

The following experimental techniques were used to determine the structure:

X-RAY DIFFRACTION

The reported resolution of this entry is 2.45 Å.

Percentile scores (ranging between 0-100) for global validation metrics of the entry are shown in the following graphic. The table shows the number of entries on which the scores are based.



Metric	Whole archive (#Entries)	Similar resolution (#Entries, resolution range(Å))
R_{free}	91344	4776 (2.50-2.42)
Clashscore	102246	1030 (2.48-2.44)
Ramachandran outliers	100387	1024 (2.48-2.44)
Sidechain outliers	100360	1024 (2.48-2.44)
RSRZ outliers	91569	4787 (2.50-2.42)

The table below summarises the geometric issues observed across the polymeric chains and their fit to the electron density. The red, orange, yellow and green segments on the lower bar indicate the fraction of residues that contain outliers for ≥ 3 , 2, 1 and 0 types of geometric quality criteria. A grey segment represents the fraction of residues that are not modelled. The numeric value for each fraction is indicated below the corresponding segment, with a dot representing fractions $\leq 5\%$. The upper red bar (where present) indicates the fraction of residues that have poor fit to the electron density. The numeric value is given above the bar.

Mol	Chain	Length	Quality of chain
1	A	303	<div> <div>4%</div> <div>81% 15% ..</div> </div>
1	C	303	<div> <div>%</div> <div>84% 12% ..</div> </div>
2	B	258	<div> <div>2%</div> <div>92% 7% .</div> </div>
2	D	258	<div> <div>3%</div> <div>95% ..</div> </div>

2 Entry composition

There are 4 unique types of molecules in this entry. The entry contains 9736 atoms, of which 0 are hydrogens and 0 are deuteriums.

In the tables below, the ZeroOcc column contains the number of atoms modelled with zero occupancy, the AltConf column contains the number of residues with at least one atom in alternate conformation and the Trace column contains the number of residues modelled with at most 2 atoms.

- Molecule 1 is a protein called CYCLIN-DEPENDENT KINASE 2.

Mol	Chain	Residues	Atoms						ZeroOcc	AltConf	Trace
1	A	300	Total	C	N	O	P	S	0	7	0
			2458	1590	418	440	1	9			
1	C	298	Total	C	N	O	P	S	0	6	0
			2431	1572	412	437	1	9			

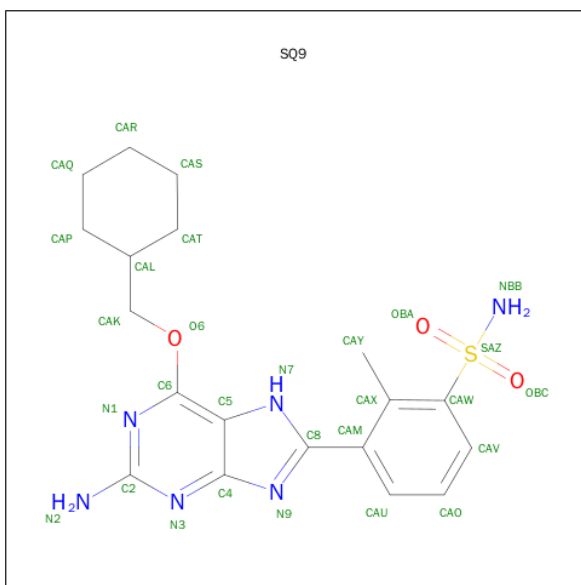
There are 10 discrepancies between the modelled and reference sequences:

Chain	Residue	Modelled	Actual	Comment	Reference
A	-4	GLY	-	EXPRESSION TAG	UNP P24941
A	-3	PRO	-	EXPRESSION TAG	UNP P24941
A	-2	LEU	-	EXPRESSION TAG	UNP P24941
A	-1	GLY	-	EXPRESSION TAG	UNP P24941
A	0	SER	-	EXPRESSION TAG	UNP P24941
C	-4	GLY	-	EXPRESSION TAG	UNP P24941
C	-3	PRO	-	EXPRESSION TAG	UNP P24941
C	-2	LEU	-	EXPRESSION TAG	UNP P24941
C	-1	GLY	-	EXPRESSION TAG	UNP P24941
C	0	SER	-	EXPRESSION TAG	UNP P24941

- Molecule 2 is a protein called CYCLIN-A2.

Mol	Chain	Residues	Atoms						ZeroOcc	AltConf	Trace
2	B	258	Total	C	N	O	S		0	8	0
			2140	1384	348	394	14				
2	D	257	Total	C	N	O	S		0	7	0
			2125	1373	345	393	14				

- Molecule 3 is 3-[2-AMINO-6-(CYCLOHEXYLMETHOXY)-7H-PURIN-8-YL]-2-METHYLBENZENESULFONAMIDE (three-letter code: SQ9) (formula: C₁₉H₂₄N₆O₃S).



Mol	Chain	Residues	Atoms					ZeroOcc	AltConf
3	A	1	Total	C	N	O	S	0	0
			29	19	6	3	1		
3	C	1	Total	C	N	O	S	0	0
			29	19	6	3	1		

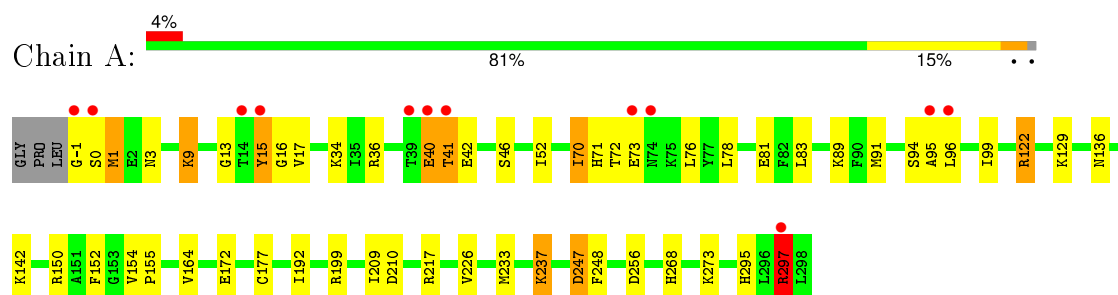
- Molecule 4 is water.

Mol	Chain	Residues	Atoms		ZeroOcc	AltConf
4	A	188	Total	O	0	0
			188	188		
4	B	151	Total	O	0	0
			151	151		
4	C	108	Total	O	0	0
			108	108		
4	D	77	Total	O	0	0
			77	77		

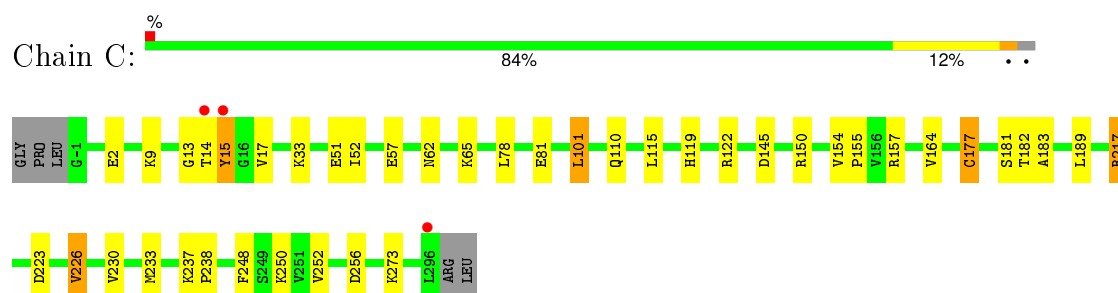
3 Residue-property plots [i](#)

These plots are drawn for all protein, RNA and DNA chains in the entry. The first graphic for a chain summarises the proportions of errors displayed in the second graphic. The second graphic shows the sequence view annotated by issues in geometry and electron density. Residues are color-coded according to the number of geometric quality criteria for which they contain at least one outlier: green = 0, yellow = 1, orange = 2 and red = 3 or more. A red dot above a residue indicates a poor fit to the electron density ($\text{RSRZ} > 2$). Stretches of 2 or more consecutive residues without any outlier are shown as a green connector. Residues present in the sample, but not in the model, are shown in grey.

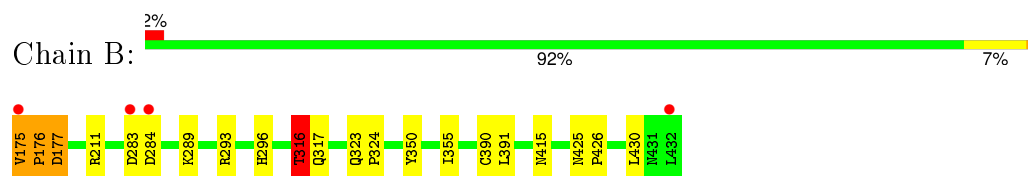
• Molecule 1: CYCLIN-DEPENDENT KINASE 2



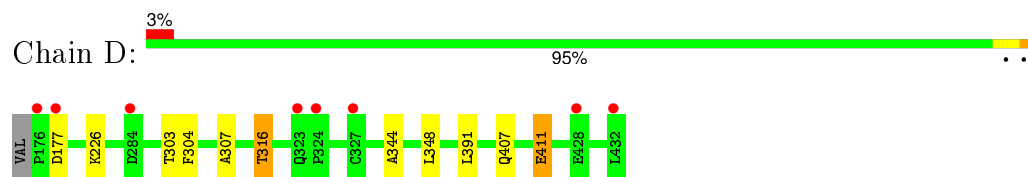
• Molecule 1: CYCLIN-DEPENDENT KINASE 2



• Molecule 2: CYCLIN-A2



• Molecule 2: CYCLIN-A2



4 Data and refinement statistics

Property	Value	Source
Space group	P 21 21 21	Depositor
Cell constants a, b, c, α , β , γ	74.19 Å 134.83 Å 148.99 Å 90.00° 90.00° 90.00°	Depositor
Resolution (Å)	37.25 – 2.45 37.22 – 2.45	Depositor EDS
% Data completeness (in resolution range)	99.3 (37.25-2.45) 99.3 (37.22-2.45)	Depositor EDS
R_{merge}	0.11	Depositor
R_{sym}	(Not available)	Depositor
$\langle I/\sigma(I) \rangle$ ¹	3.57 (at 2.45 Å)	Xtriage
Refinement program	REFMAC 5.8.0049	Depositor
R, R_{free}	0.185 , 0.241 0.185 , 0.238	Depositor DCC
R_{free} test set	2766 reflections (5.26%)	DCC
Wilson B-factor (Å ²)	29.5	Xtriage
Anisotropy	0.302	Xtriage
Bulk solvent k_{sol} (e/Å ³), B_{sol} (Å ²)	(Not available) , (Not available)	EDS
Estimated twinning fraction	No twinning to report.	Xtriage
L-test for twinning ²	$\langle L \rangle = 0.47$, $\langle L^2 \rangle = 0.29$	Xtriage
Outliers	0 of 55328 reflections	Xtriage
F_o, F_c correlation	0.94	EDS
Total number of atoms	9736	wwPDB-VP
Average B, all atoms (Å ²)	35.0	wwPDB-VP

Xtriage's analysis on translational NCS is as follows: *The largest off-origin peak in the Patterson function is 3.08% of the height of the origin peak. No significant pseudotranslation is detected.*

¹Intensities estimated from amplitudes.

²Theoretical values of $\langle |L| \rangle$, $\langle L^2 \rangle$ for acentric reflections are 0.5, 0.375 respectively for untwinned datasets, and 0.333, 0.2 for perfectly twinned datasets.

5 Model quality [i](#)

5.1 Standard geometry [i](#)

Bond lengths and bond angles in the following residue types are not validated in this section: TPO, SQ9

The Z score for a bond length (or angle) is the number of standard deviations the observed value is removed from the expected value. A bond length (or angle) with $|Z| > 5$ is considered an outlier worth inspection. RMSZ is the root-mean-square of all Z scores of the bond lengths (or angles).

Mol	Chain	Bond lengths		Bond angles	
		RMSZ	# $ Z > 5$	RMSZ	# $ Z > 5$
1	A	0.91	1/2508 (0.0%)	0.97	7/3402 (0.2%)
1	C	0.79	0/2481	0.86	2/3366 (0.1%)
2	B	0.88	1/2190 (0.0%)	0.88	2/2973 (0.1%)
2	D	0.76	0/2175	0.80	0/2951
All	All	0.84	2/9354 (0.0%)	0.88	11/12692 (0.1%)

Chiral center outliers are detected by calculating the chiral volume of a chiral center and verifying if the center is modelled as a planar moiety or with the opposite hand. A planarity outlier is detected by checking planarity of atoms in a peptide group, atoms in a mainchain group or atoms of a sidechain that are expected to be planar.

Mol	Chain	#Chirality outliers	#Planarity outliers
1	A	0	2

All (2) bond length outliers are listed below:

Mol	Chain	Res	Type	Atoms	Z	Observed(Å)	Ideal(Å)
1	A	256	ASP	CB-CG	6.86	1.66	1.51
2	B	284	ASP	CB-CG	5.18	1.62	1.51

The worst 5 of 11 bond angle outliers are listed below:

Mol	Chain	Res	Type	Atoms	Z	Observed(°)	Ideal(°)
1	A	256	ASP	CB-CG-OD1	10.13	127.42	118.30
1	A	247	ASP	CB-CG-OD1	8.43	125.89	118.30
1	C	217	ARG	NE-CZ-NH2	-8.01	116.29	120.30
1	A	247	ASP	CB-CG-OD2	-6.63	112.33	118.30
1	C	217	ARG	NE-CZ-NH1	6.37	123.48	120.30

There are no chirality outliers.

All (2) planarity outliers are listed below:

Mol	Chain	Res	Type	Group
1	A	70	ILE	Peptide
1	A	72	THR	Peptide

5.2 Too-close contacts ⓘ

In the following table, the Non-H and H(model) columns list the number of non-hydrogen atoms and hydrogen atoms in the chain respectively. The H(added) column lists the number of hydrogen atoms added and optimized by MolProbity. The Clashes column lists the number of clashes within the asymmetric unit, whereas Symm-Clashes lists symmetry related clashes.

Mol	Chain	Non-H	H(model)	H(added)	Clashes	Symm-Clashes
1	A	2458	0	2495	42	0
1	C	2431	0	2460	30	0
2	B	2140	0	2158	20	0
2	D	2125	0	2138	8	0
3	A	29	0	22	2	0
3	C	29	0	24	2	0
4	A	188	0	0	8	1
4	B	151	0	0	3	0
4	C	108	0	0	3	0
4	D	77	0	0	0	1
All	All	9736	0	9297	92	1

The all-atom clashscore is defined as the number of clashes found per 1000 atoms (including hydrogen atoms). The all-atom clashscore for this structure is 5.

The worst 5 of 92 close contacts within the same asymmetric unit are listed below, sorted by their clash magnitude.

Atom-1	Atom-2	Interatomic distance (Å)	Clash overlap (Å)
1:C:177[A]:CYS:SG	1:C:233:MET:SD	2.37	1.22
2:B:175:VAL:O	2:B:177:ASP:N	1.81	1.11
2:B:415:ASN:HB3	4:B:2144:HOH:O	1.48	1.07
1:A:95:ALA:O	1:A:96:LEU:HB2	1.67	0.90
1:A:297:ARG:HG3	1:A:297:ARG:HH11	1.34	0.88

All (1) symmetry-related close contacts are listed below. The label for Atom-2 includes the symmetry operator and encoded unit-cell translations to be applied.

Atom-1	Atom-2	Interatomic distance (Å)	Clash overlap (Å)
4:A:2049:HOH:O	4:D:2076:HOH:O[1_655]	2.14	0.06

5.3 Torsion angles [i](#)

5.3.1 Protein backbone [i](#)

In the following table, the Percentiles column shows the percent Ramachandran outliers of the chain as a percentile score with respect to all X-ray entries followed by that with respect to entries of similar resolution.

The Analysed column shows the number of residues for which the backbone conformation was analysed, and the total number of residues.

Mol	Chain	Analysed	Favoured	Allowed	Outliers	Percentiles	
1	A	304/303 (100%)	291 (96%)	11 (4%)	2 (1%)	26	32
1	C	301/303 (99%)	292 (97%)	6 (2%)	3 (1%)	19	21
2	B	264/258 (102%)	260 (98%)	3 (1%)	1 (0%)	39	49
2	D	262/258 (102%)	259 (99%)	3 (1%)	0	100	100
All	All	1131/1122 (101%)	1102 (97%)	23 (2%)	6 (0%)	34	41

5 of 6 Ramachandran outliers are listed below:

Mol	Chain	Res	Type
2	B	176	PRO
1	A	164	VAL
1	C	164	VAL
1	A	1	MET
1	C	177[A]	CYS

5.3.2 Protein sidechains [i](#)

In the following table, the Percentiles column shows the percent sidechain outliers of the chain as a percentile score with respect to all X-ray entries followed by that with respect to entries of similar resolution.

The Analysed column shows the number of residues for which the sidechain conformation was analysed, and the total number of residues.

Mol	Chain	Analysed	Rotameric	Outliers	Percentiles	
1	A	270/265 (102%)	254 (94%)	16 (6%)	24	34

Continued on next page...

Continued from previous page...

Mol	Chain	Analysed	Rotameric	Outliers	Percentiles	
1	C	267/265 (101%)	255 (96%)	12 (4%)	34	47
2	B	240/232 (103%)	232 (97%)	8 (3%)	45	61
2	D	238/232 (103%)	233 (98%)	5 (2%)	61	77
All	All	1015/994 (102%)	974 (96%)	41 (4%)	38	53

5 of 41 residues with a non-rotameric sidechain are listed below:

Mol	Chain	Res	Type
2	B	283	ASP
2	B	391[A]	LEU
2	D	226	LYS
2	B	289	LYS
2	B	296	HIS

Some sidechains can be flipped to improve hydrogen bonding and reduce clashes. All (3) such sidechains are listed below:

Mol	Chain	Res	Type
2	B	179	HIS
2	D	396	GLN
2	D	425	ASN

5.3.3 RNA ⓘ

There are no RNA molecules in this entry.

5.4 Non-standard residues in protein, DNA, RNA chains ⓘ

2 non-standard protein/DNA/RNA residues are modelled in this entry.

In the following table, the Counts columns list the number of bonds (or angles) for which Mogul statistics could be retrieved, the number of bonds (or angles) that are observed in the model and the number of bonds (or angles) that are defined in the chemical component dictionary. The Link column lists molecule types, if any, to which the group is linked. The Z score for a bond length (or angle) is the number of standard deviations the observed value is removed from the expected value. A bond length (or angle) with $|Z| > 2$ is considered an outlier worth inspection. RMSZ is the root-mean-square of all Z scores of the bond lengths (or angles).

Mol	Type	Chain	Res	Link	Bond lengths			Bond angles		
					Counts	RMSZ	$\# Z > 2$	Counts	RMSZ	$\# Z > 2$
1	TPO	A	160	1	8,10,11	0.70	0	7,14,16	1.22	1 (14%)

Mol	Type	Chain	Res	Link	Bond lengths			Bond angles		
					Counts	RMSZ	# Z > 2	Counts	RMSZ	# Z > 2
1	TPO	C	160	1	8,10,11	0.67	0	7,14,16	1.71	3 (42%)

In the following table, the Chirals column lists the number of chiral outliers, the number of chiral centers analysed, the number of these observed in the model and the number defined in the chemical component dictionary. Similar counts are reported in the Torsion and Rings columns. '-' means no outliers of that kind were identified.

Mol	Type	Chain	Res	Link	Chirals	Torsions	Rings
1	TPO	A	160	1	-	0/8/11/13	0/0/0/0
1	TPO	C	160	1	-	0/8/11/13	0/0/0/0

There are no bond length outliers.

All (4) bond angle outliers are listed below:

Mol	Chain	Res	Type	Atoms	Z	Observed(°)	Ideal(°)
1	C	160	TPO	O-C-CA	-2.33	119.29	125.44
1	C	160	TPO	OG1-P-O1P	-2.26	101.47	107.11
1	C	160	TPO	O3P-P-O1P	2.08	117.29	110.58
1	A	160	TPO	O3P-P-O2P	2.21	115.81	107.38

There are no chirality outliers.

There are no torsion outliers.

There are no ring outliers.

No monomer is involved in short contacts.

5.5 Carbohydrates [i](#)

There are no carbohydrates in this entry.

5.6 Ligand geometry [i](#)

2 ligands are modelled in this entry.

In the following table, the Counts columns list the number of bonds (or angles) for which Mogul statistics could be retrieved, the number of bonds (or angles) that are observed in the model and the number of bonds (or angles) that are defined in the chemical component dictionary. The Link column lists molecule types, if any, to which the group is linked. The Z score for a bond length (or angle) is the number of standard deviations the observed value is removed from the expected

value. A bond length (or angle) with $|Z| > 2$ is considered an outlier worth inspection. RMSZ is the root-mean-square of all Z scores of the bond lengths (or angles).

Mol	Type	Chain	Res	Link	Bond lengths			Bond angles		
					Counts	RMSZ	# Z > 2	Counts	RMSZ	# Z > 2
3	SQ9	A	1299	-	31,32,32	4.51	12 (38%)	35,47,47	2.57	12 (34%)
3	SQ9	C	1297	-	31,32,32	3.25	10 (32%)	35,47,47	1.89	8 (22%)

In the following table, the Chirals column lists the number of chiral outliers, the number of chiral centers analysed, the number of these observed in the model and the number defined in the chemical component dictionary. Similar counts are reported in the Torsion and Rings columns. '-' means no outliers of that kind were identified.

Mol	Type	Chain	Res	Link	Chirals	Torsions	Rings
3	SQ9	A	1299	-	-	2/15/23/23	0/4/4/4
3	SQ9	C	1297	-	-	0/15/23/23	0/4/4/4

The worst 5 of 22 bond length outliers are listed below:

Mol	Chain	Res	Type	Atoms	Z	Observed(Å)	Ideal(Å)
3	A	1299	SQ9	SAZ-NBB	-19.11	1.18	1.60
3	C	1297	SQ9	SAZ-NBB	-6.94	1.45	1.60
3	C	1297	SQ9	CAM-C8	-6.84	1.34	1.48
3	A	1299	SQ9	CAM-C8	-5.99	1.36	1.48
3	C	1297	SQ9	CAY-CAX	-5.98	1.39	1.51

The worst 5 of 20 bond angle outliers are listed below:

Mol	Chain	Res	Type	Atoms	Z	Observed(°)	Ideal(°)
3	A	1299	SQ9	OBC-SAZ-OBA	-7.22	108.66	118.80
3	C	1297	SQ9	OBC-SAZ-OBA	-4.76	112.11	118.80
3	A	1299	SQ9	N3-C2-N1	-4.60	120.43	127.44
3	C	1297	SQ9	N3-C2-N1	-4.18	121.08	127.44
3	A	1299	SQ9	CAM-C8-N9	-3.18	119.88	123.78

There are no chirality outliers.

All (2) torsion outliers are listed below:

Mol	Chain	Res	Type	Atoms
3	A	1299	SQ9	CAK-O6-C6-N1
3	A	1299	SQ9	CAK-O6-C6-C5

There are no ring outliers.

2 monomers are involved in 4 short contacts:

Mol	Chain	Res	Type	Clashes	Symm-Clashes
3	A	1299	SQ9	2	0
3	C	1297	SQ9	2	0

5.7 Other polymers [i](#)

There are no such residues in this entry.

5.8 Polymer linkage issues [i](#)

There are no chain breaks in this entry.

6 Fit of model and data ⓘ

6.1 Protein, DNA and RNA chains ⓘ

In the following table, the column labelled ‘#RSRZ > 2’ contains the number (and percentage) of RSRZ outliers, followed by percent RSRZ outliers for the chain as percentile scores relative to all X-ray entries and entries of similar resolution. The OWAB column contains the minimum, median, 95th percentile and maximum values of the occupancy-weighted average B-factor per residue. The column labelled ‘Q < 0.9’ lists the number of (and percentage) of residues with an average occupancy less than 0.9.

Mol	Chain	Analysed	<RSRZ>	#RSRZ > 2	OWAB(Å ²)	Q < 0.9
1	A	299/303 (98%)	-0.10	12 (4%) 42 45	16, 26, 52, 70	0
1	C	297/303 (98%)	-0.11	3 (1%) 84 86	26, 38, 53, 63	0
2	B	258/258 (100%)	-0.24	4 (1%) 74 77	17, 28, 44, 57	0
2	D	257/258 (99%)	-0.08	8 (3%) 52 56	24, 40, 66, 82	0
All	All	1111/1122 (99%)	-0.13	27 (2%) 62 65	16, 33, 57, 82	0

The worst 5 of 27 RSRZ outliers are listed below:

Mol	Chain	Res	Type	RSRZ
1	C	15	TYR	5.9
1	C	14	THR	5.3
2	D	432	LEU	5.2
1	A	39	THR	4.2
2	D	323	GLN	4.0

6.2 Non-standard residues in protein, DNA, RNA chains ⓘ

In the following table, the Atoms column lists the number of modelled atoms in the group and the number defined in the chemical component dictionary. LLDF column lists the quality of electron density of the group with respect to its neighbouring residues in protein, DNA or RNA chains. The B-factors column lists the minimum, median, 95th percentile and maximum values of B factors of atoms in the group. The column labelled ‘Q < 0.9’ lists the number of atoms with occupancy less than 0.9.

Mol	Type	Chain	Res	Atoms	RSCC	RSR	LLDF	B-factors(Å ²)	Q < 0.9
1	TPO	C	160	11/12	0.99	0.10	-	30,33,34,34	0
1	TPO	A	160	11/12	0.99	0.11	-	23,25,26,26	0

6.3 Carbohydrates [i](#)

There are no carbohydrates in this entry.

6.4 Ligands [i](#)

In the following table, the Atoms column lists the number of modelled atoms in the group and the number defined in the chemical component dictionary. LLDF column lists the quality of electron density of the group with respect to its neighbouring residues in protein, DNA or RNA chains. The B-factors column lists the minimum, median, 95th percentile and maximum values of B factors of atoms in the group. The column labelled 'Q< 0.9' lists the number of atoms with occupancy less than 0.9.

Mol	Type	Chain	Res	Atoms	RSCC	RSR	LLDF	B-factors(\AA^2)	Q<0.9
3	SQ9	C	1297	29/29	0.92	0.31	1.56	39,43,50,51	0
3	SQ9	A	1299	29/29	0.94	0.20	0.75	35,39,44,46	0

6.5 Other polymers [i](#)

There are no such residues in this entry.