



Full wwPDB X-ray Structure Validation Report ⓘ

Feb 1, 2016 – 07:54 AM GMT

PDB ID : 3CKR
Title : Crystal structure of BACE-1 in complex with inhibitor
Authors : Min, K.
Deposited on : 2008-03-16
Resolution : 2.70 Å(reported)

This is a Full wwPDB X-ray Structure Validation Report for a publicly released PDB entry.
We welcome your comments at validation@mail.wwpdb.org
A user guide is available at
<http://wwpdb.org/validation/2016/XrayValidationReportHelp>
with specific help available everywhere you see the ⓘ symbol.

The following versions of software and data (see [references ⓘ](#)) were used in the production of this report:

MolProbity : 4.02b-467
Mogul : 1.7 (RC4), CSD as536be (2015)
Xtriage (Phenix) : 1.9-1692
EDS : rb-20026688
Percentile statistics : 20151230.v01 (using entries in the PDB archive December 30th 2015)
Refmac : 5.8.0135
CCP4 : 6.5.0
Ideal geometry (proteins) : Engh & Huber (2001)
Ideal geometry (DNA, RNA) : Parkinson et al. (1996)
Validation Pipeline (wwPDB-VP) : trunk26865

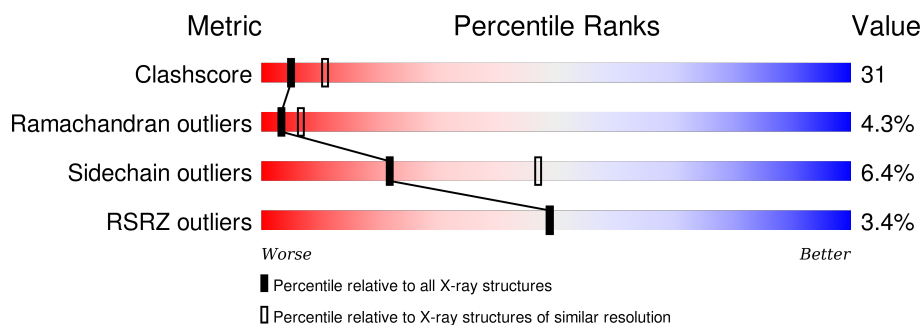
1 Overall quality at a glance

The following experimental techniques were used to determine the structure:

X-RAY DIFFRACTION

The reported resolution of this entry is 2.70 Å.

Percentile scores (ranging between 0-100) for global validation metrics of the entry are shown in the following graphic. The table shows the number of entries on which the scores are based.



Metric	Whole archive (#Entries)	Similar resolution (#Entries, resolution range(Å))
Clashscore	102246	2422 (2.70-2.70)
Ramachandran outliers	100387	2382 (2.70-2.70)
Sidechain outliers	100360	2382 (2.70-2.70)
RSRZ outliers	91569	2107 (2.70-2.70)

The table below summarises the geometric issues observed across the polymeric chains and their fit to the electron density. The red, orange, yellow and green segments on the lower bar indicate the fraction of residues that contain outliers for ≥ 3 , 2, 1 and 0 types of geometric quality criteria. A grey segment represents the fraction of residues that are not modelled. The numeric value for each fraction is indicated below the corresponding segment, with a dot representing fractions $\leq 5\%$. The upper red bar (where present) indicates the fraction of residues that have poor fit to the electron density. The numeric value is given above the bar.

Mol	Chain	Length	Quality of chain
1	A	412	 2% 49% 40% • 8%
1	B	412	 2% 48% 39% • • 8%
1	C	412	 4% 37% 47% 8% 8%

2 Entry composition

There are 3 unique types of molecules in this entry. The entry contains 9135 atoms, of which 0 are hydrogens and 0 are deuteriums.

In the tables below, the ZeroOcc column contains the number of atoms modelled with zero occupancy, the AltConf column contains the number of residues with at least one atom in alternate conformation and the Trace column contains the number of residues modelled with at most 2 atoms.

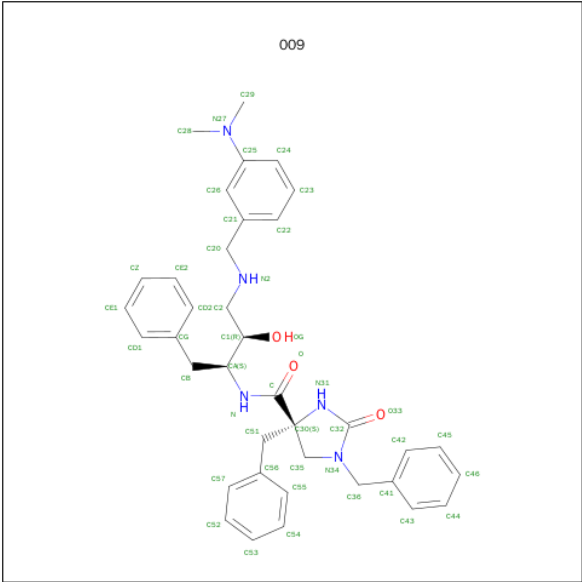
- Molecule 1 is a protein called Beta-secretase 1.

Mol	Chain	Residues	Atoms					ZeroOcc	AltConf	Trace
1	A	379	Total	C	N	O	S	0	0	0
			2974	1904	496	560	14			
1	B	377	Total	C	N	O	S	0	0	0
			2968	1901	493	560	14			
1	C	377	Total	C	N	O	S	0	0	0
			2967	1900	494	559	14			

There are 6 discrepancies between the modelled and reference sequences:

Chain	Residue	Modelled	Actual	Comment	Reference
A	-6	LYS	ARG	ENGINEERED	UNP P56817
A	-5	LYS	ARG	ENGINEERED	UNP P56817
B	-6	LYS	ARG	ENGINEERED	UNP P56817
B	-5	LYS	ARG	ENGINEERED	UNP P56817
C	-6	LYS	ARG	ENGINEERED	UNP P56817
C	-5	LYS	ARG	ENGINEERED	UNP P56817

- Molecule 2 is (4S)-1,4-DIBENZYL-N-[(1S,2R)-1-BENZYL-3-{[3-(DIMETHYLAMINO)BENZYL]AMINO}-2-HYDROXYPROPYL]-2-OXOIMIDAZOLIDINE-4-CARBOXAMIDE (three-letter code: 009) (formula: C₃₇H₄₃N₅O₃).



Mol	Chain	Residues	Atoms				ZeroOcc	AltConf
2	A	1	Total	C	N	O	0	0
			45	37	5	3		
2	B	1	Total	C	N	O	0	0
			45	37	5	3		
2	C	1	Total	C	N	O	0	0
			45	37	5	3		

- Molecule 3 is water.

Mol	Chain	Residues	Atoms		ZeroOcc	AltConf
3	A	38	Total	O	0	0
			38	38		
3	B	35	Total	O	0	0
			35	35		
3	C	18	Total	O	0	0
			18	18		

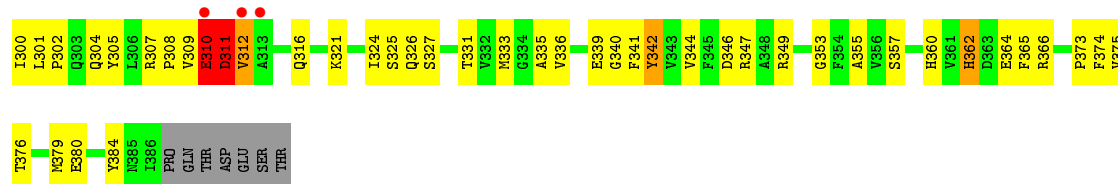
These plots are drawn for all protein, RNA and DNA chains in the entry. The first graphic for a chain summarises the proportions of errors displayed in the second graphic. The second graphic shows the sequence view annotated by issues in geometry and electron density. Residues are color-coded according to the number of geometric quality criteria for which they contain at least one outlier: green = 0, yellow = 1, orange = 2 and red = 3 or more. A red dot above a residue indicates a poor fit to the electron density ($\text{RSRZ} > 2$). Stretches of 2 or more consecutive residues without any outlier are shown as a green connector. Residues present in the sample, but not in the model, are shown in grey.

Chain A:

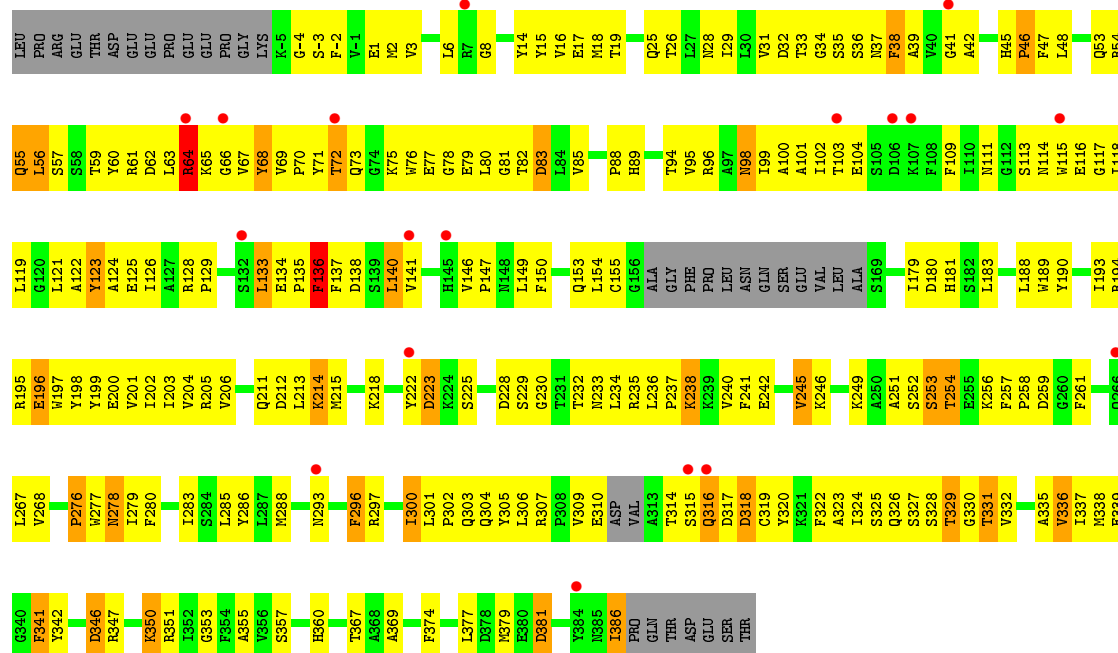
2% 49% 40% 8%

ASP, GLU, SER, THR, VAL, THR, Q316, C319, F322, A323, I324, S325, Q326, S327, S328, T329, G330, T331, V332, M333, G334, A335, V336, I337, M338, E339, G340, F341, Y342, F345, D346, R351, V356, S357, H360, R366, T367, A368, A369, P373, F374, L377, D378, M379, E380, D381, Y384, M385, I386, PRO, THR, VAL, THR, D223, K224, S225, I226, V227, D228, L234, R235, A236, P237, K238, K239, V240, F241, V245, K249, S252, G334, A335, V336, I337, M338, E339, G340, F341, Y342, F345, D346, R351, V356, S357, H360, R366, T367, A368, A369, P373, F374, L377, D378, M379, E380, D381, Y384, M385, I386, PRO, THR, D223, K224, S225, I226, V227, D228, L234, R235, A236, P237, K238, K239, V240, F241, V245, K249, S252, G334, A335, V336, I337, M338, E339, G340, F341, Y342, F345, D346, R351, V356, S357, H360, R366, T367, A368, A369, P373, F374, L377, D378, M379, E380, D381, Y384, M385, I386, PRO, THR, L149, F150, S151, L152, G156, A157, G158, P158, T159, L160, P161, T162, L163, V167, Y168, G169, G170, T171, T172, G173, G174, E177, G181, T182, D183, L184, V185, G186, I187, T188, V189, G190, T191, F192, I193, R194, W197, V198, Y199, E200, V201, I202, I203, N209, D212, L213, K214, M215, D216, C217, D218, D219, D220, D221, D222, D223, D224, D225, D226, D227, D228, D229, D230, D231, D232, D233, D234, D235, D236, D237, D238, D239, D240, D241, D242, D243, D244, D245, D246, D247, D248, D249, D250, D251, D252, D253, D254, D255, D256, D257, D258, D259, D260, D261, D262, D263, D264, D265, D266, D267, D268, D269, D270, D271, D272, D273, D274, D275, D276, D277, D278, D279, D280, D281, D282, D283, D284, D285, D286, D287, D288, D289, D290, D291, D292, D293, D294, D295, D296, D297, D298, D299, D300, D301, D302, D303, D304, D305, D306, D307, D308, D309, D310, D311, D312, D313, D314, D315, D316, D317, D318, D319, D320, D321, D322, D323, D324, D325, D326, D327, D328, D329, D330, D331, D332, D333, D334, D335, D336, D337, D338, D339, D340, D341, D342, D343, D344, D345, D346, D347, D348, D349, D350, D351, D352, D353, D354, D355, D356, D357, D358, D359, D360, D361, D362, D363, D364, D365, D366, D367, D368, D369, D370, D371, D372, D373, D374, D375, D376, D377, D378, D379, D380, D381, D382, D383, D384, D385, D386, D387, D388, D389, D390, D391, D392, D393, D394, D395, D396, D397, D398, D399, D400, D401, D402, D403, D404, D405, D406, D407, D408, D409, D410, D411, D412, D413, D414, D415, D416, D417, D418, D419, D420, D421, D422, D423, D424, D425, D426, D427, D428, D429, D430, D431, D432, D433, D434, D435, D436, D437, D438, D439, D440, D441, D442, D443, D444, D445, D446, D447, D448, D449, D450, D451, D452, D453, D454, D455, D456, D457, D458, D459, D460, D461, D462, D463, D464, D465, D466, D467, D468, D469, D470, D471, D472, D473, D474, D475, D476, D477, D478, D479, D480, D481, D482, D483, D484, D485, D486, D487, D488, D489, D490, D491, D492, D493, D494, D495, D496, D497, D498, D499, D500, D501, D502, D503, D504, D505, D506, D507, D508, D509, D510, D511, D512, D513, D514, D515, D516, D517, D518, D519, D520, D521, D522, D523, D524, D525, D526, D527, D528, D529, D530, D531, D532, D533, D534, D535, D536, D537, D538, D539, D540, D541, D542, D543, D544, D545, D546, D547, D548, D549, D550, D551, D552, D553, D554, D555, D556, D557, D558, D559, D560, D561, D562, D563, D564, D565, D566, D567, D568, D569, D570, D571, D572, D573, D574, D575, D576, D577, D578, D579, D580, D581, D582, D583, D584, D585, D586, D587, D588, D589, D590, D591, D592, D593, D594, D595, D596, D597, D598, D599, D600, D601, D602, D603, D604, D605, D606, D607, D608, D609, D610, D611, D612, D613, D614, D615, D616, D617, D618, D619, D620, D621, D622, D623, D624, D625, D626, D627, D628, D629, D630, D631, D632, D633, D634, D635, D636, D637, D638, D639, D640, D641, D642, D643, D644, D645, D646, D647, D648, D649, D650, D651, D652, D653, D654, D655, D656, D657, D658, D659, D660, D661, D662, D663, D664, D665, D666, D667, D668, D669, D670, D671, D672, D673, D674, D675, D676, D677, D678, D679, D680, D681, D682, D683, D684, D685, D686, D687, D688, D689, D690, D691, D692, D693, D694, D695, D696, D697, D698, D699, D700, D701, D702, D703, D704, D705, D706, D707, D708, D709, D710, D711, D712, D713, D714, D715, D716, D717, D718, D719, D720, D721, D722, D723, D724, D725, D726, D727, D728, D729, D730, D731, D732, D733, D734, D735, D736, D737, D738, D739, D740, D741, D742, D743, D744, D745, D746, D747, D748, D749, D750, D751, D752, D753, D754, D755, D756, D757, D758, D759, D760, D761, D762, D763, D764, D765, D766, D767, D768, D769, D770, D771, D772, D773, D774, D775, D776, D777, D778, D779, D780, D781, D782, D783, D784, D785, D786, D787, D788, D789, D790, D791, D792, D793, D794, D795, D796, D797, D798, D799, D800, D801, D802, D803, D804, D805, D806, D807, D808, D809, D810, D811, D812, D813, D814, D815, D816, D817, D818, D819, D820, D821, D822, D82

Chain B:



• Molecule 1: Beta-secretase 1



4 Data and refinement statistics

Property	Value	Source
Space group	C 1 2 1	Depositor
Cell constants a, b, c, α , β , γ	224.46 Å 108.13 Å 61.13 Å 90.00° 100.87° 90.00°	Depositor
Resolution (Å)	19.96 – 2.70 20.14 – 2.70	Depositor EDS
% Data completeness (in resolution range)	84.2 (19.96-2.70) 85.0 (20.14-2.70)	Depositor EDS
R_{merge}	0.15	Depositor
R_{sym}	(Not available)	Depositor
$\langle I/\sigma(I) \rangle$ ¹	2.69 (at 2.71 Å)	Xtriage
Refinement program	CNS	Depositor
R, R_{free}	0.251 , 0.257 0.267 , (Not available)	Depositor DCC
R_{free} test set	No test flags present.	DCC
Wilson B-factor (Å ²)	43.1	Xtriage
Anisotropy	0.860	Xtriage
Bulk solvent k_{sol} (e/Å ³), B_{sol} (Å ²)	0.30 , 57.2	EDS
Estimated twinning fraction	No twinning to report.	Xtriage
L-test for twinning ²	$\langle L \rangle = 0.46$, $\langle L^2 \rangle = 0.29$	Xtriage
Outliers	1 of 35675 reflections (0.003%)	Xtriage
F_o, F_c correlation	0.92	EDS
Total number of atoms	9135	wwPDB-VP
Average B, all atoms (Å ²)	52.0	wwPDB-VP

Xtriage's analysis on translational NCS is as follows: *The largest off-origin peak in the Patterson function is 3.86% of the height of the origin peak. No significant pseudotranslation is detected.*

¹Intensities estimated from amplitudes.

²Theoretical values of $\langle |L| \rangle$, $\langle L^2 \rangle$ for acentric reflections are 0.5, 0.375 respectively for untwinned datasets, and 0.333, 0.2 for perfectly twinned datasets.

5 Model quality [i](#)

5.1 Standard geometry [i](#)

Bond lengths and bond angles in the following residue types are not validated in this section:
009

The Z score for a bond length (or angle) is the number of standard deviations the observed value is removed from the expected value. A bond length (or angle) with $|Z| > 5$ is considered an outlier worth inspection. RMSZ is the root-mean-square of all Z scores of the bond lengths (or angles).

Mol	Chain	Bond lengths		Bond angles	
		RMSZ	$\# Z > 5$	RMSZ	$\# Z > 5$
1	A	0.48	0/3048	0.74	0/4138
1	B	0.48	0/3043	0.75	4/4136 (0.1%)
1	C	0.43	0/3041	0.70	0/4129
All	All	0.46	0/9132	0.73	4/12403 (0.0%)

There are no bond length outliers.

All (4) bond angle outliers are listed below:

Mol	Chain	Res	Type	Atoms	Z	Observed(°)	Ideal(°)
1	B	198	TYR	N-CA-C	-5.76	95.45	111.00
1	B	30	LEU	CA-CB-CG	5.71	128.44	115.30
1	B	342	TYR	N-CA-C	-5.19	97.00	111.00
1	B	38	PHE	N-CA-C	-5.18	97.00	111.00

There are no chirality outliers.

There are no planarity outliers.

5.2 Too-close contacts [i](#)

In the following table, the Non-H and H(model) columns list the number of non-hydrogen atoms and hydrogen atoms in the chain respectively. The H(added) column lists the number of hydrogen atoms added and optimized by MolProbity. The Clashes column lists the number of clashes within the asymmetric unit, whereas Symm-Clashes lists symmetry related clashes.

Mol	Chain	Non-H	H(model)	H(added)	Clashes	Symm-Clashes
1	A	2974	0	2889	157	1
1	B	2968	0	2884	160	0
1	C	2967	0	2886	246	1
2	A	45	0	43	4	0

Continued on next page...

Continued from previous page...

Mol	Chain	Non-H	H(model)	H(added)	Clashes	Symm-Clashes
2	B	45	0	43	2	0
2	C	45	0	43	1	0
3	A	38	0	0	4	0
3	B	35	0	0	1	0
3	C	18	0	0	2	0
All	All	9135	0	8788	551	1

The all-atom clashscore is defined as the number of clashes found per 1000 atoms (including hydrogen atoms). The all-atom clashscore for this structure is 31.

All (551) close contacts within the same asymmetric unit are listed below, sorted by their clash magnitude.

Atom-1	Atom-2	Interatomic distance (Å)	Clash overlap (Å)
1:B:53:GLN:HB3	1:B:55:GLN:HE22	1.21	1.02
1:C:41:GLY:HA2	1:C:102:ILE:HB	1.42	1.01
1:B:73:GLN:HA	1:B:73:GLN:HE21	1.24	1.01
1:C:55:GLN:HE21	1:C:55:GLN:H	1.09	0.97
1:C:267:LEU:HD13	1:C:319:CYS:HB3	1.44	0.96
1:B:53:GLN:HB3	1:B:55:GLN:NE2	1.81	0.95
1:C:55:GLN:HG2	1:C:56:LEU:HD12	1.51	0.92
1:C:68:TYR:HB2	1:C:77:GLU:HG2	1.49	0.92
1:B:9:LYS:HD3	1:B:12:GLN:OE1	1.72	0.89
1:B:279:ILE:HG22	1:C:211:GLN:HE21	1.36	0.88
1:B:55:GLN:HG2	1:B:56:LEU:HD23	1.54	0.88
1:B:340:GLY:HA2	1:B:360:HIS:HB2	1.58	0.86
1:B:357:SER:HB3	1:B:360:HIS:HB3	1.58	0.85
1:C:45:HIS:HD2	1:C:46:PRO:HD2	1.42	0.84
1:A:267:LEU:HD13	1:A:319:CYS:HB3	1.60	0.84
1:B:29:ILE:HD12	1:B:117:GLY:HA3	1.61	0.83
1:B:309:VAL:C	1:B:311:ASP:H	1.79	0.83
1:A:245:VAL:O	1:A:249:LYS:HB2	1.80	0.81
1:A:180:ASP:HB3	1:A:183:LEU:HG	1.62	0.80
1:B:73:GLN:HA	1:B:73:GLN:NE2	1.97	0.80
1:A:70:PRO:HD2	1:A:128:ARG:NH1	1.95	0.80
1:C:241:PHE:HE1	1:C:324:ILE:O	1.63	0.80
1:A:95:VAL:HG11	1:A:140:LEU:HA	1.64	0.79
1:C:67:VAL:HG23	1:C:129:PRO:HG3	1.62	0.79
1:A:304:GLN:O	1:A:336:VAL:HG12	1.83	0.79
1:A:18:MET:SD	1:A:29:ILE:HG13	2.23	0.79
1:A:53:GLN:HB3	1:A:55:GLN:HE22	1.48	0.78
1:C:32:ASP:OD1	1:C:230:GLY:HA3	1.83	0.78

Continued on next page...

Continued from previous page...

Atom-1	Atom-2	Interatomic distance (Å)	Clash overlap (Å)
1:C:322:PHE:CZ	1:C:324:ILE:HB	2.18	0.78
1:B:279:ILE:HG22	1:C:211:GLN:NE2	1.99	0.77
1:C:301:LEU:HD11	1:C:367:THR:HA	1.65	0.77
1:B:113:SER:O	1:B:114:ASN:HB2	1.84	0.76
1:A:261:PHE:CD1	1:A:268:VAL:HG23	2.21	0.76
1:C:65:LYS:HE3	1:C:80:LEU:HD12	1.68	0.76
1:C:77:GLU:HB2	1:C:104:GLU:HB2	1.68	0.76
1:A:35:SER:O	1:A:122:ALA:HB3	1.86	0.76
1:A:168:ALA:O	1:A:169:SER:HB2	1.86	0.76
1:C:55:GLN:NE2	1:C:55:GLN:H	1.81	0.75
1:B:285:LEU:HD12	1:B:298:ILE:HD11	1.68	0.75
1:B:271:GLN:CD	1:B:271:GLN:H	1.90	0.75
1:A:93:VAL:HB	1:A:144:THR:HG21	1.67	0.74
1:C:193:ILE:HD12	1:C:350:LYS:HA	1.68	0.74
1:C:195:ARG:O	1:C:197:TRP:HD1	1.70	0.73
1:C:245:VAL:O	1:C:249:LYS:HB2	1.89	0.73
1:A:67:VAL:HG23	1:A:129:PRO:HG3	1.70	0.73
1:B:188:LEU:HD23	1:B:355:ALA:HB2	1.71	0.72
1:C:203:ILE:HD13	1:C:285:LEU:HD22	1.71	0.71
1:A:322:PHE:CE2	1:A:324:ILE:HB	2.24	0.71
1:A:235:ARG:HB2	1:A:332:VAL:HB	1.72	0.71
1:C:335:ALA:O	1:C:339:GLU:HG3	1.90	0.70
1:C:69:VAL:HG22	1:C:128:ARG:HB2	1.73	0.70
1:C:68:TYR:CB	1:C:77:GLU:HG2	2.21	0.70
1:C:37:ASN:HD21	1:C:128:ARG:H	1.38	0.70
1:B:238:LYS:O	1:B:242:GLU:HG3	1.91	0.69
1:C:70:PRO:HA	1:C:75:LYS:HB3	1.74	0.69
1:C:29:ILE:HD12	1:C:117:GLY:HA3	1.73	0.69
1:B:301:LEU:HB3	1:B:302:PRO:HD2	1.73	0.69
1:C:-4:GLY:O	1:C:180:ASP:HA	1.92	0.69
1:B:31:VAL:HG12	1:B:31:VAL:O	1.92	0.68
1:B:211:GLN:HE22	1:C:254:THR:HG21	1.55	0.68
1:C:341:PHE:HB3	1:C:355:ALA:O	1.93	0.68
1:B:236:LEU:HD13	1:B:240:VAL:HG12	1.74	0.68
1:A:82:THR:O	1:A:83:ASP:HB2	1.93	0.68
1:C:267:LEU:HD22	1:C:309:VAL:HG21	1.75	0.68
1:C:55:GLN:HE21	1:C:55:GLN:N	1.87	0.68
1:C:38:PHE:HD2	1:C:39:ALA:N	1.92	0.68
1:B:4:ASP:H	1:B:173:SER:HB3	1.58	0.68
1:C:61:ARG:HB2	1:C:82:THR:OG1	1.93	0.68
1:C:301:LEU:H	1:C:304:GLN:NE2	1.91	0.68

Continued on next page...

Continued from previous page...

Atom-1	Atom-2	Interatomic distance (Å)	Clash overlap (Å)
1:B:53:GLN:CB	1:B:55:GLN:HE22	2.03	0.68
1:A:53:GLN:HB3	1:A:55:GLN:NE2	2.09	0.68
1:A:70:PRO:HD2	1:A:128:ARG:HH12	1.58	0.68
1:A:12:GLN:HE22	1:A:113:SER:HA	1.58	0.68
1:A:217:CYS:HA	1:A:220:TYR:CD1	2.28	0.67
1:A:152:LEU:HD12	1:A:345:PHE:CE2	2.29	0.67
1:A:384:TYR:OH	1:A:386:ILE:HD13	1.94	0.67
1:B:179:ILE:HD11	1:B:344:VAL:HG11	1.76	0.67
1:C:68:TYR:HB2	1:C:77:GLU:CG	2.24	0.67
1:C:69:VAL:O	1:C:75:LYS:HB2	1.95	0.67
1:C:149:LEU:C	1:C:149:LEU:HD23	2.15	0.67
1:B:282:VAL:HG13	1:B:366:ARG:NH1	2.10	0.67
1:B:234:LEU:HB2	1:B:336:VAL:CG2	2.24	0.67
1:A:146:VAL:HG11	1:A:176:ILE:HG22	1.76	0.66
1:A:107:LYS:HE2	1:A:107:LYS:H	1.60	0.66
1:C:242:GLU:O	1:C:245:VAL:HG23	1.95	0.66
1:A:367:THR:HG23	1:A:368:ALA:O	1.95	0.66
1:C:235:ARG:HE	1:C:332:VAL:HG21	1.59	0.66
1:C:123:TYR:CD2	1:C:196:GLU:HB3	2.31	0.66
1:A:278:ASN:HA	1:A:366:ARG:HH12	1.60	0.66
1:B:4:ASP:N	1:B:173:SER:HB3	2.11	0.66
1:B:40:VAL:HG12	1:B:117:GLY:HA3	1.79	0.65
1:B:76:TRP:HB2	1:B:102:ILE:HG23	1.77	0.65
1:A:183:LEU:HD12	1:A:342:TYR:CE1	2.31	0.65
1:A:22:SER:HB2	1:A:59:THR:HG23	1.79	0.65
1:C:70:PRO:HD2	1:C:128:ARG:NH1	2.11	0.65
1:A:302:PRO:HG2	1:A:303:GLN:OE1	1.97	0.65
1:C:301:LEU:HB3	1:C:302:PRO:HD2	1.76	0.65
1:C:69:VAL:HG22	1:C:128:ARG:CB	2.27	0.65
1:C:233:ASN:HA	1:C:336:VAL:CG1	2.27	0.65
1:A:15:TYR:HB2	1:A:29:ILE:O	1.98	0.64
1:A:12:GLN:NE2	1:A:113:SER:HA	2.12	0.64
1:C:267:LEU:CD1	1:C:319:CYS:HB3	2.24	0.63
1:A:36:SER:HB2	1:A:127:ALA:HB2	1.80	0.63
1:C:113:SER:OG	1:C:115:TRP:NE1	2.31	0.63
1:A:219:GLU:HG3	1:A:239:LYS:HD3	1.79	0.63
1:A:305:TYR:HA	1:A:336:VAL:CG1	2.29	0.63
1:A:55:GLN:O	1:A:56:LEU:HD23	2.00	0.62
1:B:29:ILE:HD12	1:B:117:GLY:CA	2.28	0.62
1:C:251:ALA:HB2	3:C:504:HOH:O	1.99	0.62
1:B:2:MET:HG2	1:B:90:GLY:HA2	1.82	0.62

Continued on next page...

Continued from previous page...

Atom-1	Atom-2	Interatomic distance (Å)	Clash overlap (Å)
1:B:184:TYR:CE2	1:B:188:LEU:HG	2.35	0.62
1:A:149:LEU:C	1:A:149:LEU:HD23	2.20	0.62
1:B:279:ILE:CG2	1:C:211:GLN:HE21	2.12	0.62
1:B:309:VAL:O	1:B:311:ASP:N	2.32	0.62
1:B:316:GLN:HA	1:B:316:GLN:NE2	2.15	0.62
1:B:309:VAL:C	1:B:311:ASP:N	2.52	0.61
1:C:136:PHE:C	1:C:136:PHE:HD2	2.04	0.61
1:A:305:TYR:HA	1:A:336:VAL:HG12	1.83	0.61
1:C:180:ASP:OD2	1:C:183:LEU:HG	2.00	0.61
1:B:211:GLN:HA	1:C:278:ASN:OD1	2.00	0.61
1:C:8:GLY:HA2	1:C:15:TYR:CE2	2.35	0.61
1:C:341:PHE:HA	1:C:357:SER:HB2	1.83	0.60
1:C:386:ILE:C	1:C:386:ILE:HD13	2.21	0.60
1:C:15:TYR:OH	1:C:114:ASN:ND2	2.29	0.60
1:C:2:MET:HG2	1:C:89:HIS:O	2.00	0.60
1:C:55:GLN:C	1:C:57:SER:H	2.05	0.60
1:A:72:THR:HB	2:A:501:009:H51	1.83	0.60
1:B:278:ASN:ND2	1:B:278:ASN:H	2.00	0.60
1:A:357:SER:HB3	1:A:360:HIS:HB3	1.84	0.60
1:C:83:ASP:O	1:C:96:ARG:HG3	2.01	0.59
1:A:107:LYS:HE2	1:A:107:LYS:N	2.17	0.59
1:C:193:ILE:HG13	1:C:350:LYS:C	2.23	0.59
1:A:179:ILE:HG23	1:A:342:TYR:HE2	1.67	0.59
1:A:63:LEU:HD21	1:C:-3:SER:HB2	1.85	0.59
1:A:17:GLU:OE2	1:A:88:PRO:HG2	2.01	0.59
1:C:136:PHE:C	1:C:136:PHE:CD2	2.75	0.59
1:A:215:MET:CE	1:A:240:VAL:HG22	2.32	0.59
1:B:55:GLN:HE21	1:B:56:LEU:CD2	2.15	0.59
1:B:376:THR:HG22	1:B:379:MET:HG2	1.83	0.59
1:A:315:SER:HB2	1:A:316:GLN:NE2	2.17	0.59
1:A:303:GLN:N	1:A:303:GLN:OE1	2.34	0.59
1:C:42:ALA:HB3	1:C:101:ALA:HB1	1.84	0.59
1:C:193:ILE:N	1:C:350:LYS:O	2.31	0.59
1:C:180:ASP:HB3	1:C:183:LEU:CD1	2.33	0.59
1:C:225:SER:OG	1:C:331:THR:HB	2.03	0.59
1:C:276:PRO:O	1:C:279:ILE:HG12	2.02	0.59
1:C:37:ASN:ND2	1:C:128:ARG:H	2.01	0.58
1:A:143:GLN:HG3	1:C:1:GLU:OE1	2.04	0.58
1:C:25:GLN:HE22	1:C:53:GLN:H	1.50	0.58
1:C:283:ILE:N	1:C:283:ILE:HD12	2.18	0.58
1:C:124:ALA:O	1:C:126:ILE:N	2.36	0.58

Continued on next page...

Continued from previous page...

Atom-1	Atom-2	Interatomic distance (Å)	Clash overlap (Å)
1:A:22:SER:HA	1:A:23:PRO:C	2.24	0.58
1:C:202:ILE:HD13	1:C:288:MET:HE1	1.86	0.58
1:C:45:HIS:O	1:C:47:PHE:N	2.37	0.58
1:B:65:LYS:HD3	1:B:66:GLY:H	1.69	0.58
1:B:245:VAL:O	1:B:249:LYS:HG3	2.03	0.58
1:C:55:GLN:HG2	1:C:56:LEU:N	2.18	0.58
1:B:211:GLN:NE2	1:C:254:THR:HG21	2.19	0.58
1:C:204:VAL:HG11	1:C:379:MET:CG	2.33	0.58
1:B:241:PHE:HE1	1:B:324:ILE:O	1.87	0.58
1:C:232:THR:HG21	1:C:307:ARG:CZ	2.34	0.57
1:B:26:THR:O	1:B:27:LEU:HG	2.04	0.57
1:C:301:LEU:H	1:C:304:GLN:HE21	1.50	0.57
1:B:110:ILE:HB	1:B:113:SER:HB3	1.85	0.57
1:B:311:ASP:O	1:B:312:VAL:HB	2.04	0.57
1:B:29:ILE:HG23	1:B:117:GLY:C	2.24	0.57
1:C:82:THR:O	1:C:83:ASP:HB2	2.05	0.57
1:C:204:VAL:HG11	1:C:379:MET:SD	2.45	0.57
1:C:241:PHE:CE1	1:C:325:SER:HA	2.40	0.57
1:B:341:PHE:CA	1:B:357:SER:HB2	2.35	0.56
1:B:197:TRP:CD1	1:B:198:TYR:N	2.66	0.56
1:A:60:TYR:CG	1:A:61:ARG:N	2.73	0.56
1:A:74:GLY:HA3	1:A:107:LYS:O	2.05	0.56
1:C:78:GLY:HA3	1:C:101:ALA:O	2.05	0.56
1:C:302:PRO:O	1:C:306:LEU:HB2	2.06	0.56
1:B:186:GLY:HA3	3:B:513:HOH:O	2.06	0.56
1:C:71:TYR:O	1:C:73:GLN:N	2.39	0.56
1:C:48:LEU:HD22	1:C:116:GLU:HB3	1.86	0.56
1:C:135:PRO:HD2	1:C:138:ASP:OD2	2.06	0.56
1:A:297:ARG:HG2	1:A:374:PHE:CE1	2.40	0.56
1:B:309:VAL:O	1:B:309:VAL:HG23	2.06	0.56
1:A:241:PHE:O	1:A:245:VAL:HG23	2.06	0.56
1:C:188:LEU:HD23	1:C:355:ALA:HB2	1.88	0.56
1:A:346:ASP:C	1:A:346:ASP:OD1	2.45	0.56
1:C:241:PHE:CE1	1:C:324:ILE:O	2.53	0.55
1:C:261:PHE:CD1	1:C:268:VAL:HG23	2.40	0.55
1:A:316:GLN:CD	1:A:316:GLN:H	2.10	0.55
1:C:341:PHE:CA	1:C:357:SER:HB2	2.37	0.55
1:A:216:ASP:O	1:A:218:LYS:N	2.39	0.55
1:C:235:ARG:HB2	1:C:332:VAL:HG23	1.87	0.55
1:A:276:PRO:O	1:A:279:ILE:HG12	2.07	0.55
1:C:241:PHE:O	1:C:245:VAL:HG22	2.06	0.55

Continued on next page...

Continued from previous page...

Atom-1	Atom-2	Interatomic distance (Å)	Clash overlap (Å)
1:C:38:PHE:HD2	1:C:39:ALA:H	1.55	0.55
1:B:276:PRO:O	1:B:279:ILE:HG12	2.07	0.55
1:C:300:ILE:HD12	1:C:304:GLN:HB3	1.88	0.55
1:B:346:ASP:OD2	1:B:349:ARG:HB2	2.07	0.55
1:B:205:ARG:NE	1:B:207:GLU:OE2	2.40	0.55
1:A:193:ILE:HG13	1:A:351:ARG:HA	1.89	0.55
1:B:233:ASN:HA	1:B:336:VAL:HG13	1.87	0.54
1:C:232:THR:HG21	1:C:307:ARG:NH2	2.21	0.54
1:C:71:TYR:O	1:C:72:THR:C	2.45	0.54
1:A:38:PHE:HE1	1:A:85:VAL:HG21	1.73	0.54
1:C:69:VAL:HG22	1:C:128:ARG:CG	2.37	0.54
1:C:136:PHE:HE2	1:C:140:LEU:HB2	1.72	0.54
1:C:300:ILE:HG21	1:C:337:ILE:HD13	1.89	0.54
1:C:267:LEU:HD12	1:C:267:LEU:C	2.28	0.54
1:C:37:ASN:HD21	1:C:128:ARG:N	2.04	0.54
1:C:70:PRO:CD	1:C:128:ARG:NH1	2.71	0.54
1:A:225:SER:OG	1:A:331:THR:HB	2.08	0.54
1:B:271:GLN:CD	1:B:271:GLN:N	2.57	0.54
1:B:4:ASP:CG	1:B:7:ARG:HH12	2.12	0.54
1:C:69:VAL:HG22	1:C:128:ARG:HG3	1.90	0.53
1:A:298:ILE:HB	1:A:341:PHE:CZ	2.43	0.53
1:C:267:LEU:HD22	1:C:309:VAL:CG2	2.39	0.53
1:A:29:ILE:HG21	1:A:119:LEU:HB2	1.88	0.53
1:B:181:HIS:HA	1:B:184:TYR:HE1	1.73	0.53
1:B:244:ALA:O	1:B:248:ILE:HG13	2.07	0.53
1:B:55:GLN:HG2	1:B:56:LEU:CD2	2.34	0.53
1:C:267:LEU:HB2	1:C:320:TYR:O	2.09	0.53
1:C:257:PHE:HB3	1:C:258:PRO:HD2	1.90	0.53
1:A:42:ALA:CB	1:A:101:ALA:HB1	2.39	0.53
1:C:341:PHE:C	1:C:357:SER:HB2	2.29	0.53
1:B:205:ARG:NH2	1:B:207:GLU:OE2	2.41	0.53
1:C:45:HIS:HD2	1:C:46:PRO:CD	2.20	0.53
1:C:99:ILE:HG22	1:C:100:ALA:N	2.24	0.53
1:B:207:GLU:O	1:B:208:ILE:HD13	2.08	0.52
1:B:270:TRP:CE3	1:B:275:THR:HG23	2.44	0.52
1:C:314:THR:HG21	1:C:316:GLN:HE21	1.74	0.52
1:C:222:TYR:O	1:C:223:ASP:CB	2.58	0.52
1:B:234:LEU:HB2	1:B:336:VAL:HG21	1.92	0.52
1:C:346:ASP:OD1	1:C:346:ASP:O	2.27	0.52
1:B:297:ARG:NH1	1:B:374:PHE:CZ	2.76	0.52
1:B:137:PHE:HD2	1:B:347:ARG:NH1	2.08	0.52

Continued on next page...

Continued from previous page...

Atom-1	Atom-2	Interatomic distance (Å)	Clash overlap (Å)
1:C:76:TRP:O	1:C:77:GLU:HG3	2.10	0.52
1:C:252:SER:O	1:C:254:THR:N	2.42	0.52
1:C:149:LEU:HD23	1:C:150:PHE:N	2.25	0.52
1:B:180:ASP:C	1:B:180:ASP:OD2	2.48	0.52
1:A:222:TYR:O	1:A:223:ASP:CB	2.57	0.52
1:B:6:LEU:HB2	1:B:172:GLY:O	2.09	0.52
1:B:28:ASN:O	1:B:29:ILE:HD13	2.10	0.51
1:B:225:SER:OG	1:B:331:THR:HB	2.11	0.51
1:B:228:ASP:OD1	1:B:230:GLY:N	2.43	0.51
1:C:48:LEU:HD22	1:C:116:GLU:CB	2.40	0.51
1:C:277:TRP:CH2	1:C:303:GLN:HG3	2.45	0.51
1:C:304:GLN:HB3	1:C:336:VAL:O	2.09	0.51
1:A:322:PHE:CZ	1:A:324:ILE:HB	2.45	0.51
1:A:257:PHE:HD1	1:A:262:TRP:CZ2	2.28	0.51
1:C:33:THR:HG23	1:C:229:SER:OG	2.09	0.51
1:B:65:LYS:HD3	1:B:66:GLY:N	2.25	0.51
1:C:300:ILE:HG21	1:C:337:ILE:CD1	2.41	0.51
1:B:197:TRP:CG	1:B:198:TYR:N	2.78	0.51
1:B:252:SER:O	1:B:254:THR:N	2.44	0.51
1:C:17:GLU:O	1:C:88:PRO:HD2	2.10	0.51
1:C:55:GLN:O	1:C:57:SER:N	2.44	0.51
1:A:125:GLU:HB2	1:A:197:TRP:HA	1.92	0.51
1:C:77:GLU:N	1:C:104:GLU:O	2.43	0.51
1:A:146:VAL:HG13	1:A:177:GLY:HA3	1.93	0.51
1:A:60:TYR:OH	1:A:62:ASP:HB2	2.11	0.51
1:C:35:SER:O	1:C:122:ALA:HB3	2.10	0.51
1:C:55:GLN:CG	1:C:56:LEU:HD12	2.33	0.51
1:A:36:SER:CB	1:A:127:ALA:HB2	2.40	0.51
1:B:153:GLN:HB2	1:B:342:TYR:HD1	1.76	0.51
1:A:130:ASP:O	1:A:132:SER:N	2.44	0.50
1:C:66:GLY:HA2	1:C:79:GLU:HA	1.93	0.50
1:C:304:GLN:O	1:C:336:VAL:HB	2.10	0.50
1:C:123:TYR:CE2	1:C:196:GLU:HB3	2.46	0.50
1:A:72:THR:HB	2:A:501:009:C51	2.41	0.50
1:A:9:LYS:O	1:A:12:GLN:HB2	2.11	0.50
1:B:156:GLY:O	1:B:157:ALA:HB2	2.11	0.50
1:B:55:GLN:HE21	1:B:56:LEU:HG	1.77	0.50
1:B:76:TRP:HA	1:B:104:GLU:O	2.12	0.50
1:A:183:LEU:HA	3:A:525:HOH:O	2.12	0.50
1:A:110:ILE:HB	1:A:113:SER:HB3	1.93	0.50
1:C:369:ALA:HA	3:C:515:HOH:O	2.11	0.50

Continued on next page...

Continued from previous page...

Atom-1	Atom-2	Interatomic distance (Å)	Clash overlap (Å)
1:C:63:LEU:O	1:C:64:ARG:C	2.50	0.50
1:C:36:SER:OG	1:C:123:TYR:O	2.28	0.49
1:C:42:ALA:CB	1:C:101:ALA:HB1	2.41	0.49
1:A:295:SER:HB3	1:A:379:MET:SD	2.52	0.49
1:C:69:VAL:CG2	1:C:128:ARG:HB2	2.41	0.49
1:A:63:LEU:O	1:C:181:HIS:HD2	1.95	0.49
1:C:189:TRP:O	1:C:353:GLY:HA2	2.12	0.49
1:B:267:LEU:CD2	1:B:321:LYS:HG3	2.42	0.49
1:A:245:VAL:HG12	1:A:249:LYS:HE3	1.93	0.49
1:A:301:LEU:HB3	1:A:302:PRO:HD2	1.94	0.49
1:C:113:SER:OG	1:C:115:TRP:CD1	2.64	0.49
1:B:40:VAL:O	1:B:102:ILE:HG13	2.13	0.49
1:C:233:ASN:HB3	1:C:323:ALA:O	2.13	0.49
1:B:15:TYR:CD1	1:B:15:TYR:O	2.66	0.49
1:B:301:LEU:H	1:B:304:GLN:HE21	1.61	0.49
1:C:123:TYR:HE1	1:C:199:TYR:CE2	2.31	0.49
1:A:14:TYR:O	1:A:30:LEU:HD12	2.13	0.49
1:A:6:LEU:HB2	1:A:172:GLY:O	2.13	0.49
1:C:38:PHE:CD2	1:C:39:ALA:N	2.77	0.49
1:C:140:LEU:O	1:C:140:LEU:HD12	2.12	0.49
1:C:320:TYR:CD1	1:C:320:TYR:N	2.81	0.49
1:B:316:GLN:HE21	1:B:316:GLN:HA	1.76	0.49
1:C:234:LEU:HD23	1:C:337:ILE:HG13	1.95	0.49
1:A:215:MET:HE2	1:A:240:VAL:HG22	1.93	0.49
1:A:194:ARG:HD2	1:A:202:ILE:HD11	1.95	0.48
1:B:235:ARG:CZ	2:B:502:009:H54	2.43	0.48
1:B:340:GLY:HA2	1:B:360:HIS:CB	2.37	0.48
1:A:294:GLN:HG3	1:A:373:PRO:HB2	1.94	0.48
1:C:300:ILE:HG13	1:C:304:GLN:HB2	1.95	0.48
1:C:33:THR:O	1:C:199:TYR:HD1	1.96	0.48
1:C:70:PRO:HG2	1:C:128:ARG:HH22	1.78	0.48
1:A:123:TYR:HB2	1:A:197:TRP:O	2.13	0.48
1:A:252:SER:O	1:A:254:THR:N	2.47	0.48
1:B:279:ILE:HA	1:C:211:GLN:HE21	1.78	0.48
1:B:181:HIS:HA	1:B:184:TYR:CE1	2.48	0.48
1:B:1:GLU:OE2	1:B:89:HIS:HA	2.13	0.48
1:A:301:LEU:H	1:A:304:GLN:NE2	2.11	0.48
1:C:300:ILE:HD11	1:C:305:TYR:HB3	1.96	0.48
1:C:314:THR:HG22	1:C:315:SER:N	2.28	0.48
1:C:33:THR:HA	1:C:121:LEU:HB2	1.96	0.48
1:B:73:GLN:CA	1:B:73:GLN:HE21	2.00	0.48

Continued on next page...

Continued from previous page...

Atom-1	Atom-2	Interatomic distance (Å)	Clash overlap (Å)
1:A:234:LEU:HD11	1:A:236:LEU:HD21	1.96	0.48
1:A:190:TYR:CD2	1:A:351:ARG:HD2	2.48	0.48
1:B:20:VAL:HG12	1:B:85:VAL:HG13	1.96	0.47
1:A:216:ASP:C	1:A:218:LYS:H	2.17	0.47
1:C:153:GLN:HB2	1:C:342:TYR:HD1	1.80	0.47
1:C:48:LEU:HD22	1:C:116:GLU:CG	2.45	0.47
1:B:311:ASP:O	1:B:312:VAL:CB	2.61	0.47
1:A:151:SER:OG	1:A:175:ILE:HB	2.14	0.47
1:A:283:ILE:O	1:A:299:THR:HA	2.13	0.47
1:B:375:VAL:HG12	1:B:375:VAL:O	2.13	0.47
1:C:102:ILE:HD12	1:C:109:PHE:HZ	1.80	0.47
1:C:136:PHE:CE2	1:C:140:LEU:HB2	2.49	0.47
1:A:197:TRP:CG	1:A:198:TYR:N	2.82	0.47
1:C:83:ASP:O	1:C:96:ARG:HA	2.15	0.47
1:B:62:ASP:OD1	1:B:64:ARG:N	2.39	0.47
1:B:217:CYS:HA	1:B:220:TYR:CE1	2.49	0.47
1:B:205:ARG:HB3	1:B:286:TYR:HB2	1.95	0.47
1:B:217:CYS:HA	1:B:220:TYR:CD1	2.49	0.47
1:B:335:ALA:O	1:B:339:GLU:HG3	2.15	0.47
1:A:302:PRO:CD	1:A:366:ARG:HH21	2.28	0.47
1:C:302:PRO:HA	1:C:305:TYR:CE2	2.50	0.47
1:B:232:THR:O	1:B:336:VAL:HG13	2.15	0.47
1:C:85:VAL:N	1:C:95:VAL:O	2.39	0.47
1:A:335:ALA:O	1:A:339:GLU:HG3	2.15	0.47
1:C:235:ARG:HB2	1:C:332:VAL:CG2	2.44	0.47
1:B:346:ASP:OD1	1:B:346:ASP:C	2.54	0.47
1:A:326:GLN:HG2	1:A:327:SER:N	2.30	0.47
1:C:205:ARG:HG2	1:C:206:VAL:N	2.29	0.46
1:C:133:LEU:O	1:C:135:PRO:HD3	2.15	0.46
1:C:70:PRO:HA	1:C:75:LYS:CB	2.43	0.46
1:A:386:ILE:O	1:A:386:ILE:HG23	2.16	0.46
1:B:72:THR:OG1	2:B:502:009:H51	2.14	0.46
1:B:32:ASP:O	1:B:120:GLY:HA2	2.15	0.46
1:B:376:THR:CG2	1:B:379:MET:HG2	2.45	0.46
1:B:137:PHE:O	1:B:141:VAL:HG23	2.15	0.46
1:A:234:LEU:N	1:A:336:VAL:HG21	2.30	0.46
1:A:32:ASP:OD2	1:A:35:SER:OG	2.34	0.46
1:C:235:ARG:HH12	1:C:329:THR:CG2	2.29	0.46
1:B:65:LYS:HB3	1:B:80:LEU:HD12	1.97	0.46
1:A:209:ASN:OD1	1:A:281:PRO:HA	2.16	0.46
1:C:286:TYR:OH	1:C:297:ARG:NH1	2.48	0.46

Continued on next page...

Continued from previous page...

Atom-1	Atom-2	Interatomic distance (Å)	Clash overlap (Å)
1:C:214:LYS:O	1:C:215:MET:HG3	2.15	0.46
1:C:267:LEU:O	1:C:267:LEU:HD12	2.14	0.46
1:A:70:PRO:CD	1:A:128:ARG:HH12	2.27	0.46
1:A:93:VAL:CB	1:A:144:THR:HG21	2.40	0.46
1:A:21:GLY:HA2	1:A:83:ASP:OD1	2.14	0.46
1:B:153:GLN:HB2	1:B:342:TYR:CD1	2.50	0.46
1:B:35:SER:O	1:B:122:ALA:HB3	2.14	0.46
1:B:341:PHE:N	1:B:357:SER:HB2	2.30	0.46
1:C:268:VAL:O	1:C:319:CYS:HA	2.15	0.46
1:B:235:ARG:NH2	1:B:326:GLN:O	2.48	0.46
1:B:123:TYR:CZ	1:B:196:GLU:HG2	2.51	0.46
1:A:215:MET:HE1	1:A:240:VAL:HG22	1.97	0.46
1:A:95:VAL:HB	1:A:143:GLN:OE1	2.16	0.46
1:A:326:GLN:HG2	1:A:327:SER:H	1.81	0.46
1:B:15:TYR:CE2	1:B:114:ASN:HB3	2.51	0.46
1:B:41:GLY:HA2	1:B:102:ILE:HB	1.98	0.45
1:B:297:ARG:HG2	1:B:374:PHE:CE1	2.51	0.45
1:A:222:TYR:O	1:A:223:ASP:HB2	2.16	0.45
1:A:292:THR:HA	3:A:516:HOH:O	2.16	0.45
1:C:54:ARG:HB3	1:C:60:TYR:CD2	2.51	0.45
1:A:234:LEU:HB2	1:A:336:VAL:CG2	2.46	0.45
1:C:277:TRP:CE3	1:C:302:PRO:HG2	2.51	0.45
1:A:217:CYS:HA	1:A:220:TYR:CE1	2.50	0.45
1:C:236:LEU:O	1:C:326:GLN:HA	2.16	0.45
1:A:32:ASP:OD2	2:A:501:009:HB	2.17	0.45
1:C:179:ILE:HG23	1:C:342:TYR:CE2	2.52	0.45
1:B:300:ILE:HG22	1:B:341:PHE:CE1	2.52	0.45
1:C:55:GLN:C	1:C:57:SER:N	2.68	0.45
1:C:240:VAL:O	1:C:241:PHE:C	2.54	0.45
1:C:225:SER:HA	1:C:331:THR:O	2.17	0.45
1:C:31:VAL:HG13	1:C:121:LEU:HD11	1.98	0.45
1:B:208:ILE:O	1:B:209:ASN:C	2.54	0.45
1:C:62:ASP:OD1	1:C:63:LEU:N	2.50	0.45
1:B:123:TYR:CE1	1:B:196:GLU:HG2	2.52	0.45
1:C:14:TYR:CE2	1:C:154:LEU:HB3	2.52	0.45
1:C:19:THR:HG22	1:C:26:THR:HA	1.98	0.45
1:B:365:PHE:CE1	1:C:205:ARG:NH1	2.84	0.45
1:C:318:ASP:N	1:C:318:ASP:OD2	2.49	0.45
1:A:55:GLN:C	1:A:56:LEU:HD23	2.37	0.45
1:C:37:ASN:HD21	1:C:128:ARG:HB2	1.82	0.45
1:C:237:PRO:HD3	1:C:331:THR:OG1	2.16	0.45

Continued on next page...

Continued from previous page...

Atom-1	Atom-2	Interatomic distance (Å)	Clash overlap (Å)
1:C:327:SER:OG	1:C:330:GLY:O	2.29	0.45
1:C:296:PHE:CD1	1:C:296:PHE:C	2.89	0.45
1:B:149:LEU:HB2	1:B:346:ASP:HA	1.98	0.45
1:C:70:PRO:HG2	1:C:128:ARG:NH2	2.32	0.45
1:C:237:PRO:O	1:C:238:LYS:C	2.55	0.45
1:A:130:ASP:C	1:A:132:SER:H	2.20	0.45
1:B:206:VAL:HG11	1:B:213:LEU:HD22	1.99	0.45
1:B:307:ARG:HG2	1:B:307:ARG:HH11	1.81	0.45
1:C:15:TYR:O	1:C:15:TYR:CD1	2.70	0.45
1:C:19:THR:HA	1:C:25:GLN:O	2.16	0.45
1:A:305:TYR:HA	1:A:336:VAL:HG11	1.97	0.44
1:C:218:LYS:HG2	1:C:381:ASP:O	2.17	0.44
1:C:337:ILE:HA	1:C:337:ILE:HD13	1.86	0.44
1:C:180:ASP:HB3	1:C:183:LEU:HG	1.99	0.44
1:B:284:SER:HA	1:B:298:ILE:O	2.17	0.44
1:C:134:GLU:HG3	1:C:138:ASP:HB2	2.00	0.44
1:B:-2:PHE:CZ	1:B:178:GLY:HA3	2.51	0.44
1:C:253:SER:HA	1:C:256:LYS:HD3	1.99	0.44
1:C:6:LEU:CD2	1:C:16:VAL:HB	2.47	0.44
1:A:338:MET:C	1:A:340:GLY:H	2.21	0.44
1:B:73:GLN:CA	1:B:73:GLN:NE2	2.68	0.44
1:A:35:SER:O	1:A:122:ALA:CB	2.63	0.44
1:C:14:TYR:CD2	1:C:154:LEU:HD22	2.53	0.44
1:A:234:LEU:N	1:A:336:VAL:CG2	2.81	0.44
1:C:277:TRP:CZ3	1:C:303:GLN:HG3	2.52	0.44
1:A:294:GLN:N	1:A:379:MET:HE1	2.32	0.44
1:B:45:HIS:ND1	1:B:46:PRO:HD2	2.33	0.44
1:B:223:ASP:CA	1:B:384:TYR:HD2	2.31	0.44
1:B:233:ASN:HA	1:B:336:VAL:CG1	2.48	0.44
1:B:191:THR:HG23	1:B:191:THR:O	2.17	0.44
1:C:-2:PHE:O	1:C:3:VAL:HG23	2.17	0.44
1:C:32:ASP:C	1:C:34:GLY:H	2.18	0.44
1:A:107:LYS:HE2	1:A:107:LYS:CA	2.48	0.44
1:A:32:ASP:OD2	1:A:118:ILE:HD11	2.17	0.44
1:A:110:ILE:CD1	2:A:501:009:H44	2.47	0.44
1:A:29:ILE:CG2	1:A:119:LEU:HB2	2.47	0.43
1:C:280:PHE:HB3	1:C:305:TYR:OH	2.18	0.43
1:C:28:ASN:O	1:C:29:ILE:HD13	2.17	0.43
1:A:316:GLN:NE2	1:A:316:GLN:H	2.16	0.43
1:B:223:ASP:HA	1:B:384:TYR:HD2	1.82	0.43
1:A:323:ALA:HB3	1:A:336:VAL:HG11	2.01	0.43

Continued on next page...

Continued from previous page...

Atom-1	Atom-2	Interatomic distance (Å)	Clash overlap (Å)
1:C:381:ASP:N	1:C:381:ASP:OD1	2.51	0.43
1:A:241:PHE:CE2	1:A:245:VAL:HG21	2.53	0.43
1:A:63:LEU:CD2	1:C:-3:SER:HB2	2.49	0.43
1:C:149:LEU:CD2	1:C:149:LEU:C	2.85	0.43
1:C:351:ARG:O	1:C:351:ARG:HG3	2.18	0.43
1:B:267:LEU:HD23	1:B:321:LYS:HG3	2.00	0.43
1:B:20:VAL:O	1:B:25:GLN:HB2	2.18	0.43
1:B:22:SER:HA	1:B:23:PRO:C	2.38	0.43
1:C:18:MET:HE1	1:C:119:LEU:HD22	2.00	0.43
1:C:41:GLY:HA3	1:C:48:LEU:HD11	2.01	0.43
1:B:30:LEU:HD22	1:B:31:VAL:N	2.34	0.43
1:A:123:TYR:CE1	1:A:199:TYR:CE2	3.07	0.43
1:A:18:MET:SD	1:A:29:ILE:CG1	3.00	0.43
1:C:34:GLY:HA3	1:C:228:ASP:OD1	2.19	0.43
1:C:204:VAL:O	1:C:205:ARG:HB2	2.19	0.43
1:A:300:ILE:HD11	1:A:305:TYR:HD2	1.84	0.43
1:C:28:ASN:C	1:C:29:ILE:HD13	2.39	0.43
1:A:63:LEU:H	1:A:81:GLY:HA2	1.83	0.43
1:B:310:GLU:C	1:B:311:ASP:OD1	2.57	0.42
1:B:307:ARG:HA	1:B:308:PRO:HD3	1.89	0.42
1:A:267:LEU:HD12	1:A:267:LEU:O	2.19	0.42
1:C:67:VAL:CG2	1:C:129:PRO:HG3	2.41	0.42
1:C:32:ASP:CB	1:C:118:ILE:HD11	2.50	0.42
1:C:301:LEU:HD11	1:C:367:THR:CA	2.45	0.42
1:C:235:ARG:HB2	1:C:332:VAL:HB	2.00	0.42
1:A:168:ALA:O	1:A:169:SER:CB	2.62	0.42
1:C:238:LYS:HA	1:C:326:GLN:HB2	2.00	0.42
1:A:26:THR:O	1:A:27:LEU:HD23	2.19	0.42
1:B:55:GLN:HE21	1:B:56:LEU:CG	2.33	0.42
1:C:277:TRP:HE3	1:C:302:PRO:HG2	1.85	0.42
1:C:180:ASP:HB3	1:C:183:LEU:HD12	1.99	0.42
1:B:267:LEU:HD21	1:B:321:LYS:HE3	2.01	0.42
1:C:146:VAL:HA	1:C:147:PRO:HD3	1.85	0.42
1:B:36:SER:HB2	1:B:127:ALA:HA	2.01	0.42
1:A:54:ARG:HD3	3:A:518:HOH:O	2.18	0.42
1:B:119:LEU:HG	1:B:119:LEU:O	2.19	0.42
1:C:45:HIS:CD2	1:C:46:PRO:HD2	2.34	0.42
1:A:234:LEU:H	1:A:336:VAL:HG21	1.84	0.42
1:B:316:GLN:CA	1:B:316:GLN:HE21	2.30	0.42
1:B:205:ARG:HB3	1:B:286:TYR:CG	2.55	0.42
1:A:268:VAL:O	1:A:319:CYS:HA	2.19	0.42

Continued on next page...

Continued from previous page...

Atom-1	Atom-2	Interatomic distance (Å)	Clash overlap (Å)
1:C:59:THR:O	1:C:96:ARG:NH1	2.45	0.42
1:A:41:GLY:O	1:A:51:TYR:HB2	2.19	0.42
1:A:28:ASN:HD22	1:A:28:ASN:HA	1.61	0.42
1:A:150:PHE:HE2	1:A:152:LEU:HD11	1.84	0.42
1:B:205:ARG:HB3	1:B:286:TYR:CB	2.50	0.42
1:C:233:ASN:ND2	1:C:323:ALA:HA	2.35	0.42
1:B:32:ASP:CG	1:B:34:GLY:H	2.23	0.42
1:B:341:PHE:C	1:B:357:SER:HB2	2.39	0.42
1:C:235:ARG:HB2	1:C:332:VAL:CB	2.50	0.42
1:B:76:TRP:HB2	1:B:102:ILE:CG2	2.46	0.42
1:B:77:GLU:HB3	1:B:104:GLU:HB3	2.02	0.42
1:B:184:TYR:HD2	1:B:355:ALA:HB1	1.85	0.42
1:C:35:SER:O	1:C:122:ALA:N	2.47	0.42
1:C:63:LEU:HD12	1:C:81:GLY:HA2	2.02	0.42
1:C:14:TYR:CG	1:C:154:LEU:HD22	2.55	0.42
1:A:216:ASP:C	1:A:218:LYS:N	2.73	0.41
1:B:67:VAL:HG11	1:B:100:ALA:HB1	2.01	0.41
1:B:283:ILE:HD12	1:B:305:TYR:CD2	2.55	0.41
1:B:234:LEU:HB2	1:B:336:VAL:HG22	1.99	0.41
1:C:202:ILE:HG21	1:C:288:MET:HE1	2.02	0.41
1:C:154:LEU:HD12	1:C:338:MET:HB3	2.02	0.41
1:C:195:ARG:NH1	1:C:197:TRP:CD2	2.88	0.41
1:C:235:ARG:O	1:C:331:THR:HA	2.20	0.41
1:A:226:ILE:HD12	1:A:228:ASP:HB2	2.02	0.41
1:B:14:TYR:CZ	1:B:154:LEU:HB3	2.55	0.41
1:C:76:TRP:C	1:C:77:GLU:HG3	2.40	0.41
1:A:297:ARG:HG2	1:A:374:PHE:HE1	1.83	0.41
1:C:346:ASP:HB3	1:C:351:ARG:O	2.21	0.41
1:C:297:ARG:NH1	1:C:374:PHE:CZ	2.88	0.41
1:A:338:MET:O	1:A:340:GLY:N	2.53	0.41
1:A:333:MET:HB3	1:A:333:MET:HE3	1.92	0.41
1:B:130:ASP:O	1:B:132:SER:N	2.54	0.41
1:C:137:PHE:O	1:C:141:VAL:HG23	2.19	0.41
1:A:241:PHE:CE1	1:A:325:SER:HA	2.55	0.41
1:A:32:ASP:C	1:A:32:ASP:OD1	2.58	0.41
1:A:146:VAL:CG1	1:A:177:GLY:HA3	2.50	0.41
1:A:212:ASP:OD1	1:A:214:LYS:N	2.48	0.41
1:B:216:ASP:O	1:B:218:LYS:N	2.53	0.41
1:C:200:GLU:HG3	1:C:201:VAL:N	2.34	0.41
1:B:300:ILE:HG22	1:B:341:PHE:HE1	1.86	0.41
1:A:201:VAL:O	1:A:202:ILE:HG13	2.21	0.41

Continued on next page...

Continued from previous page...

Atom-1	Atom-2	Interatomic distance (Å)	Clash overlap (Å)
1:C:98:ASN:C	1:C:99:ILE:HG13	2.41	0.41
1:A:203:ILE:N	1:A:203:ILE:HD12	2.36	0.41
1:A:386:ILE:HD12	3:A:527:HOH:O	2.20	0.41
1:B:235:ARG:NH1	1:B:327:SER:HB2	2.36	0.41
1:C:45:HIS:C	1:C:47:PHE:N	2.74	0.41
1:A:179:ILE:HG23	1:A:342:TYR:CE2	2.52	0.41
1:B:293:ASN:HA	1:B:376:THR:O	2.21	0.41
1:C:232:THR:CG2	1:C:307:ARG:NE	2.83	0.41
1:B:189:TRP:O	1:B:353:GLY:HA2	2.21	0.41
1:C:179:ILE:HG23	1:C:342:TYR:HE2	1.86	0.41
1:C:212:ASP:OD1	1:C:213:LEU:N	2.54	0.41
1:C:283:ILE:CD1	1:C:305:TYR:CE2	3.04	0.40
1:B:362:HIS:N	1:B:362:HIS:ND1	2.70	0.40
1:C:70:PRO:HD2	1:C:128:ARG:CZ	2.50	0.40
1:C:71:TYR:HB3	2:C:503:009:HD2	2.03	0.40
1:A:237:PRO:HD3	1:A:331:THR:OG1	2.21	0.40
1:C:189:TRP:O	1:C:353:GLY:CA	2.69	0.40
1:C:190:TYR:CD2	1:C:353:GLY:N	2.89	0.40
1:C:293:ASN:HB3	1:C:377:LEU:CD2	2.51	0.40
1:B:96:ARG:NH1	1:B:96:ARG:HG3	2.36	0.40
1:C:29:ILE:HD12	1:C:117:GLY:CA	2.48	0.40
1:C:54:ARG:HG2	1:C:60:TYR:CE1	2.56	0.40
1:A:77:GLU:N	1:A:104:GLU:O	2.47	0.40
1:C:47:PHE:HD1	1:C:109:PHE:O	2.05	0.40
1:B:36:SER:HB3	1:B:127:ALA:HB2	2.03	0.40
1:B:93:VAL:HG21	1:B:140:LEU:HD11	2.02	0.40
1:A:356:VAL:HG22	1:A:369:ALA:HA	2.02	0.40
1:A:261:PHE:CD1	1:A:268:VAL:CG2	3.00	0.40
1:C:357:SER:HB3	1:C:360:HIS:HB3	2.03	0.40
1:A:26:THR:HG22	1:A:27:LEU:N	2.36	0.40
1:A:-2:PHE:N	1:A:-2:PHE:CD1	2.90	0.40

All (1) symmetry-related close contacts are listed below. The label for Atom-2 includes the symmetry operator and encoded unit-cell translations to be applied.

Atom-1	Atom-2	Interatomic distance (Å)	Clash overlap (Å)
1:A:68:TYR:OH	1:C:68:TYR:O[4_555]	2.04	0.16

5.3 Torsion angles

5.3.1 Protein backbone

In the following table, the Percentiles column shows the percent Ramachandran outliers of the chain as a percentile score with respect to all X-ray entries followed by that with respect to entries of similar resolution.

The Analysed column shows the number of residues for which the backbone conformation was analysed, and the total number of residues.

Mol	Chain	Analysed	Favoured	Allowed	Outliers	Percentiles	
1	A	373/412 (90%)	320 (86%)	40 (11%)	13 (4%)	4	10
1	B	373/412 (90%)	328 (88%)	32 (9%)	13 (4%)	4	10
1	C	371/412 (90%)	309 (83%)	40 (11%)	22 (6%)	2	3
All	All	1117/1236 (90%)	957 (86%)	112 (10%)	48 (4%)	3	7

All (48) Ramachandran outliers are listed below:

Mol	Chain	Res	Type
1	A	10	SER
1	A	131	ASP
1	A	223	ASP
1	A	253	SER
1	B	223	ASP
1	B	253	SER
1	B	312	VAL
1	C	72	THR
1	C	123	TYR
1	C	125	GLU
1	C	133	LEU
1	C	223	ASP
1	C	238	LYS
1	C	253	SER
1	C	316	GLN
1	A	83	ASP
1	A	169	SER
1	A	217	CYS
1	B	214	LYS
1	B	259	ASP
1	B	310	GLU
1	B	311	ASP
1	C	56	LEU
1	C	194	ARG

Continued on next page...

Continued from previous page...

Mol	Chain	Res	Type
1	C	214	LYS
1	C	350	LYS
1	A	339	GLU
1	C	136	PHE
1	C	196	GLU
1	C	347	ARG
1	A	272	ALA
1	B	131	ASP
1	B	197	TRP
1	C	64	ARG
1	C	83	ASP
1	C	98	ASN
1	C	140	LEU
1	C	346	ASP
1	A	149	LEU
1	B	70	PRO
1	B	156	GLY
1	C	46	PRO
1	A	156	GLY
1	A	278	ASN
1	B	181	HIS
1	B	217	CYS
1	C	276	PRO
1	A	237	PRO

5.3.2 Protein sidechains ⓘ

In the following table, the Percentiles column shows the percent sidechain outliers of the chain as a percentile score with respect to all X-ray entries followed by that with respect to entries of similar resolution.

The Analysed column shows the number of residues for which the sidechain conformation was analysed, and the total number of residues.

Mol	Chain	Analysed	Rotameric	Outliers	Percentiles	
1	A	321/353 (91%)	308 (96%)	13 (4%)	38	69
1	B	322/353 (91%)	300 (93%)	22 (7%)	20	43
1	C	322/353 (91%)	295 (92%)	27 (8%)	14	30
All	All	965/1059 (91%)	903 (94%)	62 (6%)	22	47

All (62) residues with a non-rotameric sidechain are listed below:

Mol	Chain	Res	Type
1	A	16	VAL
1	A	111	ASN
1	A	125	GLU
1	A	130	ASP
1	A	149	LEU
1	A	188	LEU
1	A	191	THR
1	A	197	TRP
1	A	234	LEU
1	A	237	PRO
1	A	304	GLN
1	A	329	THR
1	A	336	VAL
1	B	30	LEU
1	B	56	LEU
1	B	72	THR
1	B	73	GLN
1	B	77	GLU
1	B	103	THR
1	B	104	GLU
1	B	105	SER
1	B	111	ASN
1	B	149	LEU
1	B	197	TRP
1	B	225	SER
1	B	234	LEU
1	B	278	ASN
1	B	310	GLU
1	B	311	ASP
1	B	325	SER
1	B	333	MET
1	B	362	HIS
1	B	364	GLU
1	B	373	PRO
1	B	380	GLU
1	C	38	PHE
1	C	55	GLN
1	C	64	ARG
1	C	68	TYR
1	C	94	THR
1	C	103	THR
1	C	111	ASN
1	C	136	PHE

Continued on next page...

Continued from previous page...

Mol	Chain	Res	Type
1	C	155	CYS
1	C	198	TYR
1	C	245	VAL
1	C	246	LYS
1	C	254	THR
1	C	259	ASP
1	C	278	ASN
1	C	296	PHE
1	C	300	ILE
1	C	310	GLU
1	C	317	ASP
1	C	318	ASP
1	C	328	SER
1	C	329	THR
1	C	331	THR
1	C	336	VAL
1	C	341	PHE
1	C	381	ASP
1	C	386	ILE

Some sidechains can be flipped to improve hydrogen bonding and reduce clashes. All (30) such sidechains are listed below:

Mol	Chain	Res	Type
1	A	12	GLN
1	A	28	ASN
1	A	73	GLN
1	A	111	ASN
1	A	266	GLN
1	A	316	GLN
1	A	326	GLN
1	B	28	ASN
1	B	55	GLN
1	B	73	GLN
1	B	92	ASN
1	B	111	ASN
1	B	211	GLN
1	B	278	ASN
1	B	294	GLN
1	B	304	GLN
1	B	316	GLN
1	C	25	GLN
1	C	28	ASN

Continued on next page...

Continued from previous page...

Mol	Chain	Res	Type
1	C	37	ASN
1	C	45	HIS
1	C	55	GLN
1	C	73	GLN
1	C	111	ASN
1	C	114	ASN
1	C	181	HIS
1	C	211	GLN
1	C	266	GLN
1	C	304	GLN
1	C	316	GLN

5.3.3 RNA [i](#)

There are no RNA molecules in this entry.

5.4 Non-standard residues in protein, DNA, RNA chains [i](#)

There are no non-standard protein/DNA/RNA residues in this entry.

5.5 Carbohydrates [i](#)

There are no carbohydrates in this entry.

5.6 Ligand geometry [i](#)

3 ligands are modelled in this entry.

In the following table, the Counts columns list the number of bonds (or angles) for which Mogul statistics could be retrieved, the number of bonds (or angles) that are observed in the model and the number of bonds (or angles) that are defined in the chemical component dictionary. The Link column lists molecule types, if any, to which the group is linked. The Z score for a bond length (or angle) is the number of standard deviations the observed value is removed from the expected value. A bond length (or angle) with $|Z| > 2$ is considered an outlier worth inspection. RMSZ is the root-mean-square of all Z scores of the bond lengths (or angles).

Mol	Type	Chain	Res	Link	Bond lengths			Bond angles		
					Counts	RMSZ	$\# Z > 2$	Counts	RMSZ	$\# Z > 2$
2	009	A	501	-	47,49,49	1.66	10 (21%)	56,67,67	1.68	8 (14%)
2	009	B	502	-	47,49,49	1.40	5 (10%)	56,67,67	1.87	7 (12%)

Mol	Type	Chain	Res	Link	Bond lengths			Bond angles		
					Counts	RMSZ	# Z > 2	Counts	RMSZ	# Z > 2
2	009	C	503	-	47,49,49	1.59	7 (14%)	56,67,67	1.69	6 (10%)

In the following table, the Chirals column lists the number of chiral outliers, the number of chiral centers analysed, the number of these observed in the model and the number defined in the chemical component dictionary. Similar counts are reported in the Torsion and Rings columns. '-' means no outliers of that kind were identified.

Mol	Type	Chain	Res	Link	Chirals	Torsions	Rings
2	009	A	501	-	-	0/37/51/51	0/5/5/5
2	009	B	502	-	-	0/37/51/51	0/5/5/5
2	009	C	503	-	-	0/37/51/51	0/5/5/5

All (22) bond length outliers are listed below:

Mol	Chain	Res	Type	Atoms	Z	Observed(Å)	Ideal(Å)
2	C	503	009	CD2-CG	2.00	1.43	1.38
2	A	501	009	C23-C24	2.01	1.43	1.38
2	A	501	009	C-N	2.02	1.38	1.33
2	A	501	009	C26-C21	2.04	1.42	1.39
2	B	502	009	C57-C56	2.06	1.43	1.38
2	B	502	009	C42-C41	2.08	1.43	1.38
2	C	503	009	C26-C21	2.11	1.43	1.39
2	C	503	009	C55-C56	2.12	1.43	1.38
2	A	501	009	C24-C25	2.21	1.43	1.39
2	A	501	009	CA-N	2.24	1.50	1.46
2	C	503	009	C51-C56	2.25	1.55	1.51
2	C	503	009	C57-C56	2.35	1.43	1.38
2	B	502	009	C51-C30	2.43	1.58	1.55
2	B	502	009	C36-N34	2.45	1.51	1.46
2	A	501	009	C36-N34	2.60	1.51	1.46
2	A	501	009	C30-C	2.65	1.59	1.54
2	A	501	009	C57-C56	2.72	1.44	1.38
2	B	502	009	C32-N34	3.04	1.42	1.37
2	C	503	009	C32-N34	3.42	1.42	1.37
2	A	501	009	C51-C30	3.73	1.60	1.55
2	A	501	009	C32-N34	3.99	1.43	1.37
2	C	503	009	C51-C30	4.01	1.60	1.55

All (21) bond angle outliers are listed below:

Mol	Chain	Res	Type	Atoms	Z	Observed(°)	Ideal(°)
2	C	503	009	C35-N34-C32	-9.71	100.77	111.67

Continued on next page...

Continued from previous page...

Mol	Chain	Res	Type	Atoms	Z	Observed(°)	Ideal(°)
2	B	502	009	C35-N34-C32	-9.34	101.19	111.67
2	A	501	009	C35-N34-C32	-9.28	101.25	111.67
2	B	502	009	CB-CA-N	-3.29	106.54	110.14
2	A	501	009	CB-CA-N	-2.93	106.93	110.14
2	A	501	009	CG-CB-CA	-2.59	109.36	113.48
2	B	502	009	O33-C32-N34	-2.48	121.53	125.09
2	C	503	009	CB-CA-N	-2.35	107.57	110.14
2	A	501	009	C21-C20-N2	-2.26	107.27	112.88
2	B	502	009	CG-CB-CA	-2.04	110.24	113.48
2	C	503	009	C30-C-N	-2.02	112.83	116.55
2	A	501	009	O33-C32-N34	-2.01	122.20	125.09
2	A	501	009	C30-C51-C56	2.07	118.08	115.20
2	C	503	009	C30-C51-C56	2.09	118.11	115.20
2	B	502	009	C30-C51-C56	2.87	119.19	115.20
2	A	501	009	C41-C36-N34	3.36	118.81	113.10
2	C	503	009	C41-C36-N34	3.51	119.08	113.10
2	A	501	009	N31-C32-N34	4.45	113.09	108.45
2	C	503	009	N31-C32-N34	4.58	113.22	108.45
2	B	502	009	C41-C36-N34	5.32	122.15	113.10
2	B	502	009	N31-C32-N34	5.47	114.15	108.45

There are no chirality outliers.

There are no torsion outliers.

There are no ring outliers.

3 monomers are involved in 7 short contacts:

Mol	Chain	Res	Type	Clashes	Symm-Clashes
2	A	501	009	4	0
2	B	502	009	2	0
2	C	503	009	1	0

5.7 Other polymers [i](#)

There are no such residues in this entry.

5.8 Polymer linkage issues [i](#)

There are no chain breaks in this entry.

6 Fit of model and data

6.1 Protein, DNA and RNA chains

In the following table, the column labelled ‘#RSRZ> 2’ contains the number (and percentage) of RSRZ outliers, followed by percent RSRZ outliers for the chain as percentile scores relative to all X-ray entries and entries of similar resolution. The OWAB column contains the minimum, median, 95th percentile and maximum values of the occupancy-weighted average B-factor per residue. The column labelled ‘Q< 0.9’ lists the number of (and percentage) of residues with an average occupancy less than 0.9.

Mol	Chain	Analysed	<RSRZ>	#RSRZ>2	OWAB(Å ²)	Q<0.9
1	A	379/412 (91%)	-0.05	10 (2%) 59 59	19, 41, 69, 114	0
1	B	377/412 (91%)	0.03	10 (2%) 58 58	25, 45, 79, 99	0
1	C	377/412 (91%)	0.47	18 (4%) 34 33	27, 64, 89, 132	0
All	All	1133/1236 (91%)	0.15	38 (3%) 49 49	19, 48, 84, 132	0

All (38) RSRZ outliers are listed below:

Mol	Chain	Res	Type	RSRZ
1	C	315	SER	5.4
1	A	377	LEU	4.6
1	B	157	ALA	4.5
1	C	316	GLN	3.9
1	C	222	TYR	3.9
1	C	145	HIS	3.8
1	C	66	GLY	3.6
1	A	310	GLU	3.3
1	B	310	GLU	3.1
1	A	316	GLN	3.1
1	C	132	SER	3.1
1	A	381	ASP	3.0
1	C	384	TYR	3.0
1	C	107	LYS	2.9
1	A	-5	LYS	2.9
1	C	72	THR	2.7
1	C	41	GLY	2.6
1	C	64	ARG	2.6
1	B	171	GLY	2.5
1	A	386	ILE	2.5
1	B	312	VAL	2.5
1	B	313	ALA	2.5
1	B	113	SER	2.5

Continued on next page...

Continued from previous page...

Mol	Chain	Res	Type	RSRZ
1	B	145	HIS	2.4
1	C	293	ASN	2.4
1	C	266	GLN	2.4
1	B	49	HIS	2.3
1	B	112	GLY	2.3
1	C	141	VAL	2.2
1	C	103	THR	2.2
1	C	106	ASP	2.2
1	B	156	GLY	2.2
1	A	380	GLU	2.1
1	A	158	GLY	2.1
1	C	7	ARG	2.1
1	A	168	ALA	2.0
1	A	379	MET	2.0
1	C	115	TRP	2.0

6.2 Non-standard residues in protein, DNA, RNA chains [i](#)

There are no non-standard protein/DNA/RNA residues in this entry.

6.3 Carbohydrates [i](#)

There are no carbohydrates in this entry.

6.4 Ligands [i](#)

In the following table, the Atoms column lists the number of modelled atoms in the group and the number defined in the chemical component dictionary. LLDF column lists the quality of electron density of the group with respect to its neighbouring residues in protein, DNA or RNA chains. The B-factors column lists the minimum, median, 95th percentile and maximum values of B factors of atoms in the group. The column labelled 'Q< 0.9' lists the number of atoms with occupancy less than 0.9.

Mol	Type	Chain	Res	Atoms	RSCC	RSR	LLDF	B-factors(\AA^2)	Q<0.9
2	009	A	501	45/45	0.89	0.24	1.61	38,45,56,56	0
2	009	C	503	45/45	0.84	0.28	0.89	69,72,82,83	0
2	009	B	502	45/45	0.89	0.21	0.50	42,48,55,56	0

6.5 Other polymers

There are no such residues in this entry.