



Full wwPDB X-ray Structure Validation Report ⓘ

Feb 1, 2016 – 01:18 AM GMT

PDB ID : 2CLO
Title : TRYPTOPHAN SYNTHASE (EXTERNAL ALDIMINE STATE) IN COM-
PLEX WITH (NAPHTHALENE-2'-SULFONYL)-2-AMINO-1-ETHYLPHO
SPHATE (F19)
Authors : Ngo, H.; Kimmich, N.; Harris, R.; Niks, D.; Blumenstein, L.; Kulik, V.;
Barends, T.R.; Schlichting, I.; Dunn, M.F.
Deposited on : 2006-04-28
Resolution : 1.50 Å(reported)

This is a Full wwPDB X-ray Structure Validation Report for a publicly released PDB entry.
We welcome your comments at validation@mail.wwpdb.org
A user guide is available at
<http://wwpdb.org/validation/2016/XrayValidationReportHelp>
with specific help available everywhere you see the ⓘ symbol.

The following versions of software and data (see [references ⓘ](#)) were used in the production of this report:

MolProbity : 4.02b-467
Mogul : 1.7 (RC4), CSD as536be (2015)
Xtriage (Phenix) : 1.9-1692
EDS : rb-20026688
Percentile statistics : 20151230.v01 (using entries in the PDB archive December 30th 2015)
Refmac : 5.8.0135
CCP4 : 6.5.0
Ideal geometry (proteins) : Engh & Huber (2001)
Ideal geometry (DNA, RNA) : Parkinson et al. (1996)
Validation Pipeline (wwPDB-VP) : trunk26865

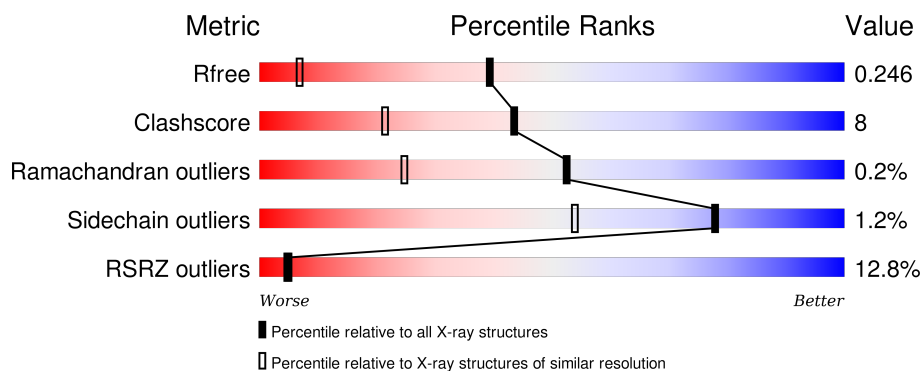
1 Overall quality at a glance

The following experimental techniques were used to determine the structure:

X-RAY DIFFRACTION


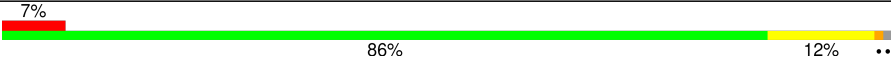
The reported resolution of this entry is 1.50 Å.

Percentile scores (ranging between 0-100) for global validation metrics of the entry are shown in the following graphic. The table shows the number of entries on which the scores are based.



Metric	Whole archive (#Entries)	Similar resolution (#Entries, resolution range(Å))
R_{free}	91344	2072 (1.50-1.50)
Clashscore	102246	2274 (1.50-1.50)
Ramachandran outliers	100387	2218 (1.50-1.50)
Sidechain outliers	100360	2216 (1.50-1.50)
RSRZ outliers	91569	2075 (1.50-1.50)

The table below summarises the geometric issues observed across the polymeric chains and their fit to the electron density. The red, orange, yellow and green segments on the lower bar indicate the fraction of residues that contain outliers for ≥ 3 , 2, 1 and 0 types of geometric quality criteria. A grey segment represents the fraction of residues that are not modelled. The numeric value for each fraction is indicated below the corresponding segment, with a dot representing fractions $\leq 5\%$. The upper red bar (where present) indicates the fraction of residues that have poor fit to the electron density. The numeric value is given above the bar.

Mol	Chain	Length	Quality of chain
1	A	268	
2	B	396	

2 Entry composition [i](#)

There are 6 unique types of molecules in this entry. The entry contains 5508 atoms, of which 0 are hydrogens and 0 are deuteriums.

In the tables below, the ZeroOcc column contains the number of atoms modelled with zero occupancy, the AltConf column contains the number of residues with at least one atom in alternate conformation and the Trace column contains the number of residues modelled with at most 2 atoms.

- Molecule 1 is a protein called TRYPTOPHAN SYNTHASE ALPHA CHAIN.

Mol	Chain	Residues	Atoms					ZeroOcc	AltConf	Trace
1	A	258	Total	C	N	O	S	0	0	1
			1941	1233	338	363	7			

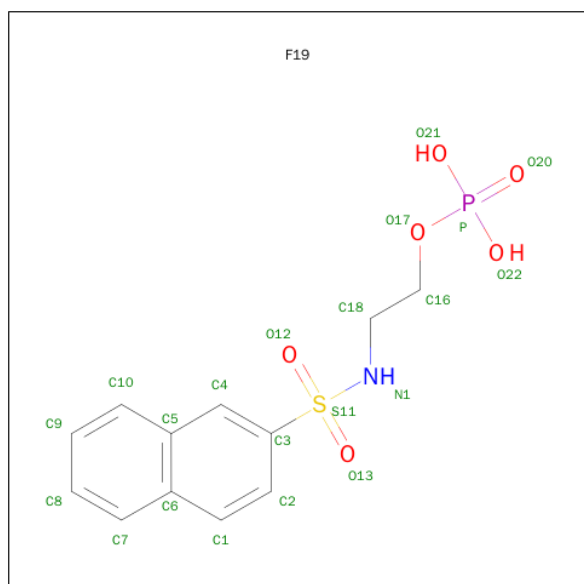
- Molecule 2 is a protein called TRYPTOPHAN SYNTHASE BETA CHAIN.

Mol	Chain	Residues	Atoms					ZeroOcc	AltConf	Trace
2	B	391	Total	C	N	O	S	0	0	1
			2954	1857	519	559	19			

There is a discrepancy between the modelled and reference sequences:

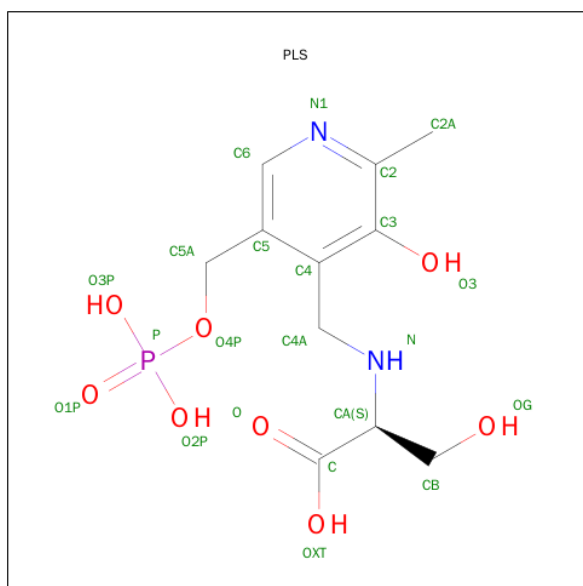
Chain	Residue	Modelled	Actual	Comment	Reference
B	34	ARG	SER	CONFLICT	UNP P0A2K1

- Molecule 3 is 2-[(2-NAPHTHYSULFONYL)AMINO]ETHYL DIHYDROGEN PHOSPHATE (three-letter code: F19) (formula: C₁₂H₁₄NO₆PS).



Mol	Chain	Residues	Atoms					ZeroOcc	AltConf
3	A	1	Total	C	N	O	P	S	
			21	12	1	6	1	1	
								0	0

- Molecule 4 is [3-HYDROXY-2-METHYL-5-PHOSPHONOXYMETHYL-PYRIDIN-4-YL METHYL]-SERINE (three-letter code: PLS) (formula: $C_{11}H_{17}N_2O_8P$).



Mol	Chain	Residues	Atoms					ZeroOcc	AltConf
4	B	1	Total	C	N	O	P		
			22	11	2	8	1		
								0	0

- Molecule 5 is SODIUM ION (three-letter code: NA) (formula: Na).

Mol	Chain	Residues	Atoms	ZeroOcc	AltConf
5	B	1	Total Na		
			1 1	0	0

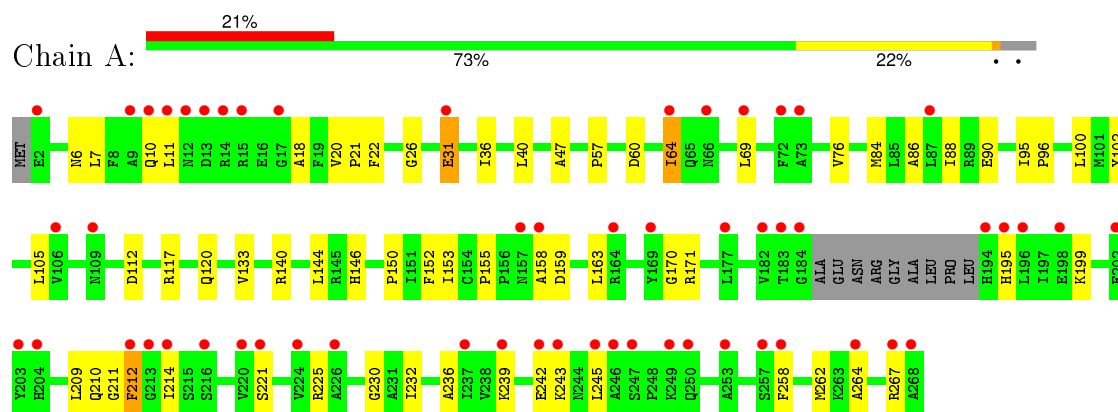
- Molecule 6 is water.

Mol	Chain	Residues	Atoms	ZeroOcc	AltConf
6	A	190	Total O		
			190 190	0	0
6	B	379	Total O		
			379 379	0	0

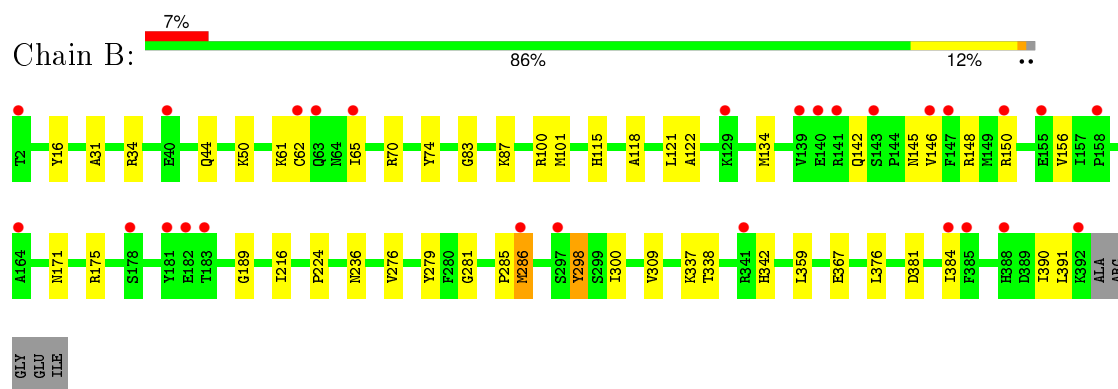
3 Residue-property plots

These plots are drawn for all protein, RNA and DNA chains in the entry. The first graphic for a chain summarises the proportions of errors displayed in the second graphic. The second graphic shows the sequence view annotated by issues in geometry and electron density. Residues are color-coded according to the number of geometric quality criteria for which they contain at least one outlier: green = 0, yellow = 1, orange = 2 and red = 3 or more. A red dot above a residue indicates a poor fit to the electron density ($RSRZ > 2$). Stretches of 2 or more consecutive residues without any outlier are shown as a green connector. Residues present in the sample, but not in the model, are shown in grey.

• Molecule 1: TRYPTOPHAN SYNTHASE ALPHA CHAIN



• Molecule 2: TRYPTOPHAN SYNTHASE BETA CHAIN



4 Data and refinement statistics

Property	Value	Source
Space group	C 1 2 1	Depositor
Cell constants a, b, c, α , β , γ	182.73 Å 60.14 Å 67.51 Å 90.00° 94.61° 90.00°	Depositor
Resolution (Å)	19.93 – 1.50 19.93 – 1.45	Depositor EDS
% Data completeness (in resolution range)	96.4 (19.93-1.50) 96.2 (19.93-1.45)	Depositor EDS
R_{merge}	0.14	Depositor
R_{sym}	(Not available)	Depositor
$\langle I/\sigma(I) \rangle$ ¹	2.72 (at 1.45 Å)	Xtriage
Refinement program	CNS 1.1	Depositor
R, R_{free}	0.232 , 0.249 0.229 , 0.246	Depositor DCC
R_{free} test set	5633 reflections (5.26%)	DCC
Wilson B-factor (Å ²)	14.0	Xtriage
Anisotropy	0.652	Xtriage
Bulk solvent k_{sol} (e/Å ³), B_{sol} (Å ²)	0.41 , 49.2	EDS
Estimated twinning fraction	No twinning to report.	Xtriage
L-test for twinning ²	$\langle L \rangle = 0.49$, $\langle L^2 \rangle = 0.33$	Xtriage
Outliers	0 of 124323 reflections	Xtriage
F_o, F_c correlation	0.94	EDS
Total number of atoms	5508	wwPDB-VP
Average B, all atoms (Å ²)	19.0	wwPDB-VP

Xtriage's analysis on translational NCS is as follows: *The largest off-origin peak in the Patterson function is 4.97% of the height of the origin peak. No significant pseudotranslation is detected.*

¹Intensities estimated from amplitudes.

²Theoretical values of $\langle |L| \rangle$, $\langle L^2 \rangle$ for acentric reflections are 0.5, 0.375 respectively for untwinned datasets, and 0.333, 0.2 for perfectly twinned datasets.

5 Model quality

5.1 Standard geometry

Bond lengths and bond angles in the following residue types are not validated in this section: NA, F19, PLS

The Z score for a bond length (or angle) is the number of standard deviations the observed value is removed from the expected value. A bond length (or angle) with $|Z| > 5$ is considered an outlier worth inspection. RMSZ is the root-mean-square of all Z scores of the bond lengths (or angles).

Mol	Chain	Bond lengths		Bond angles	
		RMSZ	$\# Z > 5$	RMSZ	$\# Z > 5$
1	A	0.30	0/1979	0.55	0/2688
2	B	0.32	0/3012	0.61	0/4071
All	All	0.31	0/4991	0.58	0/6759

Chiral center outliers are detected by calculating the chiral volume of a chiral center and verifying if the center is modelled as a planar moiety or with the opposite hand. A planarity outlier is detected by checking planarity of atoms in a peptide group, atoms in a mainchain group or atoms of a sidechain that are expected to be planar.

Mol	Chain	#Chirality outliers	#Planarity outliers
2	B	0	1

There are no bond length outliers.

There are no bond angle outliers.

There are no chirality outliers.

All (1) planarity outliers are listed below:

Mol	Chain	Res	Type	Group
2	B	298	TYR	Sidechain

5.2 Too-close contacts

In the following table, the Non-H and H(model) columns list the number of non-hydrogen atoms and hydrogen atoms in the chain respectively. The H(added) column lists the number of hydrogen atoms added and optimized by MolProbity. The Clashes column lists the number of clashes within the asymmetric unit, whereas Symm-Clashes lists symmetry related clashes.

Mol	Chain	Non-H	H(model)	H(added)	Clashes	Symm-Clashes
1	A	1941	0	1943	45	0
2	B	2954	0	2927	35	0
3	A	21	0	12	1	0
4	B	22	0	13	1	0
5	B	1	0	0	0	0
6	A	190	0	0	4	0
6	B	379	0	0	9	0
All	All	5508	0	4895	80	0

The all-atom clashscore is defined as the number of clashes found per 1000 atoms (including hydrogen atoms). The all-atom clashscore for this structure is 8.

All (80) close contacts within the same asymmetric unit are listed below, sorted by their clash magnitude.

Atom-1	Atom-2	Interatomic distance (Å)	Clash overlap (Å)
2:B:34:ARG:HB2	6:B:2139:HOH:O	1.82	0.80
1:A:211:GLY:O	1:A:212:PHE:HB2	1.89	0.73
1:A:262:MET:SD	6:A:2158:HOH:O	2.47	0.72
1:A:140:ARG:O	1:A:144:LEU:HD13	1.88	0.72
1:A:150:PRO:HD2	1:A:171:ARG:HB2	1.77	0.67
2:B:44:GLN:HG3	6:B:2074:HOH:O	1.96	0.66
1:A:258:PHE:CZ	6:A:2158:HOH:O	2.50	0.64
1:A:153:ILE:HG13	3:A:1268:F19:H9	1.81	0.62
1:A:86:ALA:O	1:A:90:GLU:HG3	2.01	0.61
1:A:117:ARG:NH1	1:A:120:GLN:NE2	2.49	0.60
2:B:367:GLU:HG3	6:B:2354:HOH:O	2.03	0.59
2:B:34:ARG:HG3	2:B:100:ARG:HE	1.68	0.58
1:A:242:GLU:HA	1:A:245:LEU:HD21	1.86	0.58
1:A:155:PRO:HG2	1:A:158:ALA:HB2	1.84	0.57
1:A:20:VAL:HG22	1:A:47:ALA:HB3	1.85	0.57
1:A:170:GLY:O	1:A:171:ARG:HD2	2.05	0.56
2:B:300:ILE:HD11	2:B:390:ILE:HD11	1.88	0.55
1:A:57:PRO:HA	1:A:102:TYR:CZ	2.42	0.55
2:B:337:LYS:HD3	2:B:391:LEU:HD11	1.90	0.54
1:A:195:HIS:O	1:A:199:LYS:HG3	2.07	0.53
2:B:279:TYR:HB3	2:B:286:MET:HE1	1.90	0.52
2:B:216:ILE:HG21	2:B:224:PRO:HD3	1.91	0.51
1:A:236:ALA:HB1	1:A:258:PHE:CZ	2.45	0.51
1:A:236:ALA:HB1	1:A:258:PHE:HZ	1.74	0.51
1:A:209:LEU:HD23	1:A:230:GLY:C	2.30	0.51
1:A:100:LEU:C	1:A:100:LEU:HD13	2.32	0.50
2:B:62:CYS:HB3	2:B:65:ILE:HG22	1.93	0.50

Continued on next page...

Continued from previous page...

Atom-1	Atom-2	Interatomic distance (Å)	Clash overlap (Å)
1:A:239:LYS:O	1:A:243:LYS:HG2	2.11	0.50
1:A:31:GLU:OE2	1:A:31:GLU:N	2.44	0.50
2:B:150:ARG:NH1	2:B:156:VAL:HB	2.27	0.49
2:B:145:ASN:ND2	2:B:148:ARG:HH21	2.11	0.49
1:A:26:GLY:HA3	1:A:76:VAL:HG21	1.94	0.49
2:B:87:LYS:CE	4:B:1392:PLS:H4A1	2.41	0.49
1:A:159:ASP:O	1:A:163:LEU:HD13	2.12	0.49
2:B:285:PRO:HG2	2:B:309:VAL:HG12	1.95	0.49
1:A:245:LEU:HD23	6:A:2172:HOH:O	2.12	0.48
1:A:210:GLN:NE2	1:A:214:ILE:HD11	2.28	0.48
2:B:16:TYR:O	2:B:281:GLY:HA2	2.13	0.48
1:A:60:ASP:HB3	1:A:64:ILE:HB	1.95	0.48
1:A:84:MET:O	1:A:88:ILE:HG13	2.13	0.48
2:B:142:GLN:O	2:B:146:VAL:HG23	2.14	0.48
2:B:121:LEU:HD12	2:B:122:ALA:N	2.29	0.47
1:A:6:ASN:O	1:A:10:GLN:HG3	2.14	0.47
1:A:69:LEU:HD13	6:B:2201:HOH:O	2.14	0.47
1:A:133:VAL:HG12	1:A:152:PHE:HD1	1.80	0.47
1:A:258:PHE:CE1	6:A:2158:HOH:O	2.68	0.47
1:A:264:ALA:HA	1:A:267:ARG:NH1	2.29	0.47
2:B:70:ARG:HG2	2:B:70:ARG:HH11	1.79	0.47
2:B:276:VAL:HA	2:B:285:PRO:HA	1.97	0.46
2:B:150:ARG:HH12	2:B:156:VAL:HB	1.81	0.46
2:B:101:MET:HG2	6:B:2058:HOH:O	2.14	0.46
1:A:221:SER:OG	1:A:225:ARG:NH1	2.48	0.46
1:A:36:ILE:O	1:A:40:LEU:HD13	2.16	0.46
2:B:61:LYS:HB2	2:B:74:TYR:CE1	2.50	0.45
1:A:112:ASP:OD1	1:A:146:HIS:HE1	1.98	0.45
1:A:21:PRO:HD2	1:A:47:ALA:O	2.17	0.45
2:B:83:GLY:N	6:B:2126:HOH:O	2.50	0.45
2:B:115:HIS:CE1	2:B:189:GLY:HA2	2.52	0.44
2:B:285:PRO:HG2	2:B:309:VAL:CG1	2.48	0.44
1:A:245:LEU:HD22	1:A:245:LEU:H	1.83	0.44
2:B:298:TYR:N	6:B:2295:HOH:O	2.50	0.44
2:B:31:ALA:HA	2:B:34:ARG:HG2	2.00	0.43
1:A:22:PHE:CD1	1:A:22:PHE:C	2.91	0.43
1:A:242:GLU:O	1:A:245:LEU:CD2	2.66	0.43
1:A:31:GLU:OE2	1:A:31:GLU:CA	2.66	0.43
1:A:11:LEU:CD1	1:A:18:ALA:HB2	2.48	0.43
2:B:171:ASN:O	2:B:175:ARG:HG3	2.19	0.43
2:B:31:ALA:O	2:B:34:ARG:HG2	2.19	0.43

Continued on next page...

Continued from previous page...

Atom-1	Atom-2	Interatomic distance (Å)	Clash overlap (Å)
2:B:338:THR:HG23	2:B:342:HIS:HD2	1.85	0.42
1:A:7:LEU:HD22	1:A:96:PRO:HG2	2.02	0.41
2:B:381:ASP:O	2:B:384:ILE:HG12	2.21	0.41
1:A:210:GLN:HE21	1:A:214:ILE:HD11	1.86	0.41
2:B:286:MET:HE3	2:B:286:MET:HB3	1.71	0.41
1:A:20:VAL:HB	1:A:232:ILE:HG12	2.03	0.41
2:B:376:LEU:HD12	2:B:376:LEU:HA	1.93	0.41
2:B:118:ALA:O	2:B:121:LEU:HG	2.21	0.40
2:B:134:MET:CE	6:B:2182:HOH:O	2.68	0.40
1:A:95:ILE:HA	1:A:96:PRO:HD3	1.97	0.40
2:B:50:LYS:HG3	6:B:2091:HOH:O	2.21	0.40
1:A:20:VAL:O	1:A:232:ILE:HA	2.22	0.40

There are no symmetry-related clashes.

5.3 Torsion angles [i](#)

5.3.1 Protein backbone [i](#)

In the following table, the Percentiles column shows the percent Ramachandran outliers of the chain as a percentile score with respect to all X-ray entries followed by that with respect to entries of similar resolution.

The Analysed column shows the number of residues for which the backbone conformation was analysed, and the total number of residues.

Mol	Chain	Analysed	Favoured	Allowed	Outliers	Percentiles	
1	A	254/268 (95%)	247 (97%)	6 (2%)	1 (0%)	39	14
2	B	389/396 (98%)	377 (97%)	12 (3%)	0	100	100
All	All	643/664 (97%)	624 (97%)	18 (3%)	1 (0%)	52	25

All (1) Ramachandran outliers are listed below:

Mol	Chain	Res	Type
1	A	212	PHE

5.3.2 Protein sidechains ⓘ

In the following table, the Percentiles column shows the percent sidechain outliers of the chain as a percentile score with respect to all X-ray entries followed by that with respect to entries of similar resolution.

The Analysed column shows the number of residues for which the sidechain conformation was analysed, and the total number of residues.

Mol	Chain	Analysed	Rotameric	Outliers	Percentiles	
1	A	201/208 (97%)	198 (98%)	3 (2%)	72	44
2	B	305/310 (98%)	302 (99%)	3 (1%)	82	62
All	All	506/518 (98%)	500 (99%)	6 (1%)	78	54

All (6) residues with a non-rotameric sidechain are listed below:

Mol	Chain	Res	Type
1	A	31	GLU
1	A	64	ILE
1	A	105	LEU
2	B	236	ASN
2	B	286	MET
2	B	359	LEU

Some sidechains can be flipped to improve hydrogen bonding and reduce clashes. All (13) such sidechains are listed below:

Mol	Chain	Res	Type
1	A	10	GLN
1	A	120	GLN
1	A	210	GLN
1	A	250	GLN
2	B	26	ASN
2	B	36	GLN
2	B	44	GLN
2	B	64	ASN
2	B	114	GLN
2	B	142	GLN
2	B	145	ASN
2	B	236	ASN
2	B	375	ASN

5.3.3 RNA ⓘ

There are no RNA molecules in this entry.

5.4 Non-standard residues in protein, DNA, RNA chains ⓘ

There are no non-standard protein/DNA/RNA residues in this entry.

5.5 Carbohydrates ⓘ

There are no carbohydrates in this entry.

5.6 Ligand geometry ⓘ

Of 3 ligands modelled in this entry, 1 is monoatomic - leaving 2 for Mogul analysis.

In the following table, the Counts columns list the number of bonds (or angles) for which Mogul statistics could be retrieved, the number of bonds (or angles) that are observed in the model and the number of bonds (or angles) that are defined in the chemical component dictionary. The Link column lists molecule types, if any, to which the group is linked. The Z score for a bond length (or angle) is the number of standard deviations the observed value is removed from the expected value. A bond length (or angle) with $|Z| > 2$ is considered an outlier worth inspection. RMSZ is the root-mean-square of all Z scores of the bond lengths (or angles).

Mol	Type	Chain	Res	Link	Bond lengths			Bond angles		
					Counts	RMSZ	# $ Z > 2$	Counts	RMSZ	# $ Z > 2$
3	F19	A	1268	-	22,22,22	3.23	10 (45%)	29,32,32	2.42	8 (27%)
4	PLS	B	1392	-	19,22,22	6.16	12 (63%)	23,31,31	3.16	7 (30%)

In the following table, the Chirals column lists the number of chiral outliers, the number of chiral centers analysed, the number of these observed in the model and the number defined in the chemical component dictionary. Similar counts are reported in the Torsion and Rings columns. '-' means no outliers of that kind were identified.

Mol	Type	Chain	Res	Link	Chirals	Torsions	Rings
3	F19	A	1268	-	-	0/15/15/15	0/2/2/2
4	PLS	B	1392	-	-	0/13/17/17	0/1/1/1

All (22) bond length outliers are listed below:

Mol	Chain	Res	Type	Atoms	Z	Observed(Å)	Ideal(Å)
4	B	1392	PLS	CB-CA	-6.38	1.42	1.52

Continued on next page...

Continued from previous page...

Mol	Chain	Res	Type	Atoms	Z	Observed(Å)	Ideal(Å)
4	B	1392	PLS	C2A-C2	-6.36	1.37	1.50
4	B	1392	PLS	P-O4P	-5.24	1.42	1.60
4	B	1392	PLS	C4A-N	-4.16	1.33	1.46
4	B	1392	PLS	P-O3P	-3.65	1.41	1.54
3	A	1268	F19	P-O22	-3.64	1.41	1.54
4	B	1392	PLS	P-O2P	-2.95	1.44	1.54
3	A	1268	F19	P-O21	-2.72	1.44	1.54
3	A	1268	F19	C9-C8	2.04	1.43	1.38
3	A	1268	F19	O12-S11	2.42	1.46	1.43
3	A	1268	F19	C4-C3	2.47	1.41	1.36
4	B	1392	PLS	C6-N1	2.60	1.40	1.34
4	B	1392	PLS	C2-N1	3.49	1.41	1.34
3	A	1268	F19	C3-S11	3.55	1.81	1.76
4	B	1392	PLS	C5-C4	3.97	1.46	1.40
3	A	1268	F19	C9-C10	4.13	1.46	1.36
3	A	1268	F19	C2-C3	4.18	1.45	1.38
3	A	1268	F19	S11-N1	6.39	1.70	1.61
4	B	1392	PLS	C6-C5	7.25	1.53	1.37
4	B	1392	PLS	C3-C4	9.23	1.54	1.40
3	A	1268	F19	C8-C7	9.40	1.58	1.36
4	B	1392	PLS	C3-C2	19.79	1.54	1.40

All (15) bond angle outliers are listed below:

Mol	Chain	Res	Type	Atoms	Z	Observed(°)	Ideal(°)
3	A	1268	F19	C8-C9-C10	-7.20	109.97	120.45
3	A	1268	F19	C8-C7-C6	-4.80	112.73	120.44
3	A	1268	F19	O13-S11-O12	-4.79	113.19	119.54
4	B	1392	PLS	C4A-C4-C5	-2.83	117.18	119.71
4	B	1392	PLS	C5-C6-N1	-2.75	119.09	123.86
3	A	1268	F19	C2-C3-C4	-2.69	117.71	121.01
3	A	1268	F19	C4-C3-S11	2.15	121.97	120.10
3	A	1268	F19	O12-S11-N1	2.65	111.28	107.03
4	B	1392	PLS	C6-N1-C2	3.39	126.20	119.28
3	A	1268	F19	C3-S11-N1	3.82	112.31	107.49
4	B	1392	PLS	O3-C3-C2	4.59	125.65	117.66
4	B	1392	PLS	O4P-C5A-C5	5.09	117.40	108.99
3	A	1268	F19	O22-P-O17	5.21	121.57	106.56
4	B	1392	PLS	O3P-P-O4P	6.49	125.24	106.56
4	B	1392	PLS	C4A-N-CA	9.85	128.87	113.81

There are no chirality outliers.

There are no torsion outliers.

There are no ring outliers.

2 monomers are involved in 2 short contacts:

Mol	Chain	Res	Type	Clashes	Symm-Clashes
3	A	1268	F19	1	0
4	B	1392	PLS	1	0

5.7 Other polymers [i](#)

There are no such residues in this entry.

5.8 Polymer linkage issues [i](#)

There are no chain breaks in this entry.

6 Fit of model and data

6.1 Protein, DNA and RNA chains

In the following table, the column labelled ‘#RSRZ> 2’ contains the number (and percentage) of RSRZ outliers, followed by percent RSRZ outliers for the chain as percentile scores relative to all X-ray entries and entries of similar resolution. The OWAB column contains the minimum, median, 95th percentile and maximum values of the occupancy-weighted average B-factor per residue. The column labelled ‘Q< 0.9’ lists the number of (and percentage) of residues with an average occupancy less than 0.9.

Mol	Chain	Analysed	<RSRZ>	#RSRZ>2	OWAB(Å ²)	Q<0.9
1	A	258/268 (96%)	1.23	56 (21%) 1 1	10, 22, 30, 33	0
2	B	391/396 (98%)	0.45	27 (6%) 20 20	8, 14, 26, 35	0
All	All	649/664 (97%)	0.76	83 (12%) 5 5	8, 18, 29, 35	0

All (83) RSRZ outliers are listed below:

Mol	Chain	Res	Type	RSRZ
1	A	195	HIS	7.0
1	A	194	HIS	6.7
2	B	385	PHE	6.1
2	B	181	TYR	5.6
1	A	15	ARG	5.4
1	A	239	LYS	5.3
1	A	268	ALA	5.3
1	A	13	ASP	5.2
1	A	69	LEU	4.9
1	A	157	ASN	4.9
1	A	249	LYS	4.7
2	B	63	GLN	4.6
2	B	392	LYS	4.5
2	B	2	THR	4.4
2	B	140	GLU	4.3
1	A	243	LYS	4.1
1	A	250	GLN	4.1
2	B	147	PHE	4.1
1	A	73	ALA	3.9
1	A	204	HIS	3.8
1	A	14	ARG	3.8
1	A	246	ALA	3.8
1	A	224	VAL	3.8
1	A	203	TYR	3.8

Continued on next page...

Continued from previous page...

Mol	Chain	Res	Type	RSRZ
1	A	12	ASN	3.7
1	A	198	GLU	3.7
1	A	196	LEU	3.7
1	A	264	ALA	3.5
1	A	2	GLU	3.5
2	B	141	ARG	3.5
1	A	212	PHE	3.2
1	A	247	SER	3.2
2	B	384	ILE	3.1
1	A	226	ALA	3.1
1	A	183	THR	3.1
1	A	9	ALA	3.0
2	B	143	SER	3.0
1	A	72	PHE	3.0
1	A	158	ALA	3.0
2	B	182	GLU	2.9
1	A	214	ILE	2.9
2	B	65	ILE	2.8
1	A	213	GLY	2.8
1	A	87	LEU	2.8
1	A	258	PHE	2.8
2	B	139	VAL	2.7
1	A	10	GLN	2.7
1	A	184	GLY	2.6
1	A	242	GLU	2.6
1	A	31	GLU	2.6
1	A	237	ILE	2.6
2	B	388	HIS	2.6
1	A	253	ALA	2.6
2	B	150	ARG	2.5
1	A	221	SER	2.5
1	A	267	ARG	2.5
1	A	245	LEU	2.4
1	A	64	ILE	2.4
2	B	40	GLU	2.4
1	A	220	VAL	2.4
2	B	178	SER	2.4
1	A	257	SER	2.4
2	B	62	CYS	2.4
1	A	177	LEU	2.3
1	A	164	ARG	2.3
1	A	182	VAL	2.3

Continued on next page...

Continued from previous page...

Mol	Chain	Res	Type	RSRZ
2	B	297	SER	2.2
1	A	109	ASN	2.2
1	A	11	LEU	2.2
1	A	216	SER	2.2
2	B	158	PRO	2.2
1	A	169	TYR	2.2
2	B	155	GLU	2.1
2	B	129	LYS	2.1
2	B	146	VAL	2.1
1	A	17	GLY	2.1
1	A	202	GLU	2.1
1	A	66	ASN	2.1
2	B	183	THR	2.0
2	B	164	ALA	2.0
2	B	286	MET	2.0
1	A	106	VAL	2.0
2	B	341	ARG	2.0

6.2 Non-standard residues in protein, DNA, RNA chains [i](#)

There are no non-standard protein/DNA/RNA residues in this entry.

6.3 Carbohydrates [i](#)

There are no carbohydrates in this entry.

6.4 Ligands [i](#)

In the following table, the Atoms column lists the number of modelled atoms in the group and the number defined in the chemical component dictionary. LLDF column lists the quality of electron density of the group with respect to its neighbouring residues in protein, DNA or RNA chains. The B-factors column lists the minimum, median, 95th percentile and maximum values of B factors of atoms in the group. The column labelled 'Q< 0.9' lists the number of atoms with occupancy less than 0.9.

Mol	Type	Chain	Res	Atoms	RSCC	RSR	LLDF	B-factors(Å ²)	Q<0.9
4	PLS	B	1392	22/22	0.96	0.11	0.38	7,16,23,24	0
3	F19	A	1268	21/21	0.87	0.15	0.34	26,31,33,34	0
5	NA	B	1393	1/1	0.97	0.09	-0.73	14,14,14,14	0

6.5 Other polymers

There are no such residues in this entry.