



Full wwPDB X-ray Structure Validation Report ⓘ

Feb 1, 2016 – 08:03 AM GMT

PDB ID : 3D6D
Title : Crystal Structure of the complex between PPARgamma LBD and the
LT175(R-enantiomer)
Authors : Pochetti, G.; Montanari, R.
Deposited on : 2008-05-19
Resolution : 2.40 Å(reported)

This is a Full wwPDB X-ray Structure Validation Report for a publicly released PDB entry.
We welcome your comments at validation@mail.wwpdb.org
A user guide is available at
<http://wwpdb.org/validation/2016/XrayValidationReportHelp>
with specific help available everywhere you see the ⓘ symbol.

The following versions of software and data (see [references ⓘ](#)) were used in the production of this report:

MolProbity : 4.02b-467
Mogul : 1.7 (RC4), CSD as536be (2015)
Xtriage (Phenix) : 1.9-1692
EDS : rb-20026688
Percentile statistics : 20151230.v01 (using entries in the PDB archive December 30th 2015)
Refmac : 5.8.0135
CCP4 : 6.5.0
Ideal geometry (proteins) : Engh & Huber (2001)
Ideal geometry (DNA, RNA) : Parkinson et al. (1996)
Validation Pipeline (wwPDB-VP) : trunk26865

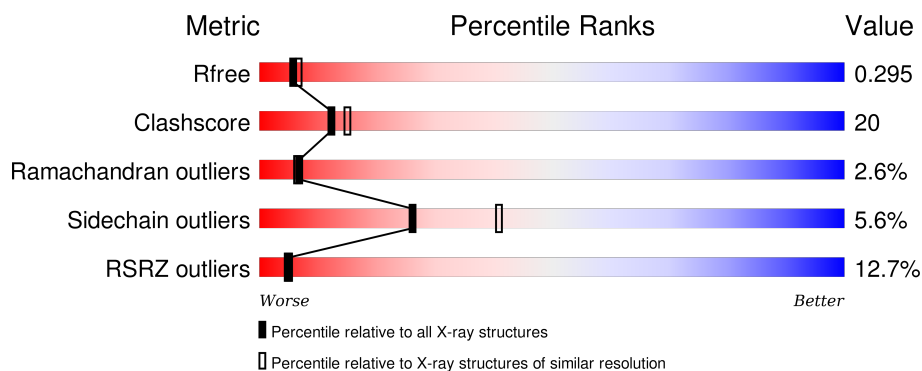
1 Overall quality at a glance

The following experimental techniques were used to determine the structure:

X-RAY DIFFRACTION

The reported resolution of this entry is 2.40 Å.

Percentile scores (ranging between 0-100) for global validation metrics of the entry are shown in the following graphic. The table shows the number of entries on which the scores are based.



Metric	Whole archive (#Entries)	Similar resolution (#Entries, resolution range(Å))
R_{free}	91344	2919 (2.40-2.40)
Clashscore	102246	3407 (2.40-2.40)
Ramachandran outliers	100387	3351 (2.40-2.40)
Sidechain outliers	100360	3352 (2.40-2.40)
RSRZ outliers	91569	2928 (2.40-2.40)

The table below summarises the geometric issues observed across the polymeric chains and their fit to the electron density. The red, orange, yellow and green segments on the lower bar indicate the fraction of residues that contain outliers for ≥ 3 , 2, 1 and 0 types of geometric quality criteria. A grey segment represents the fraction of residues that are not modelled. The numeric value for each fraction is indicated below the corresponding segment, with a dot representing fractions $\leq 5\%$. The upper red bar (where present) indicates the fraction of residues that have poor fit to the electron density. The numeric value is given above the bar.

Mol	Chain	Length	Quality of chain
1	A	286	<div> <div>9%</div> <div>59%</div> <div>33%</div> <div>6%</div> </div>
1	B	286	<div> <div>14%</div> <div>60%</div> <div>30%</div> <div>5%</div> <div>6%</div> </div>

The following table lists non-polymeric compounds, carbohydrate monomers and non-standard residues in protein, DNA, RNA chains that are outliers for geometric or electron-density-fit criteria:

Mol	Type	Chain	Res	Chirality	Geometry	Clashes	Electron density
2	LRG	A	1	X	-	-	X

2 Entry composition

There are 3 unique types of molecules in this entry. The entry contains 4504 atoms, of which 0 are hydrogens and 0 are deuteriums.

In the tables below, the ZeroOcc column contains the number of atoms modelled with zero occupancy, the AltConf column contains the number of residues with at least one atom in alternate conformation and the Trace column contains the number of residues modelled with at most 2 atoms.

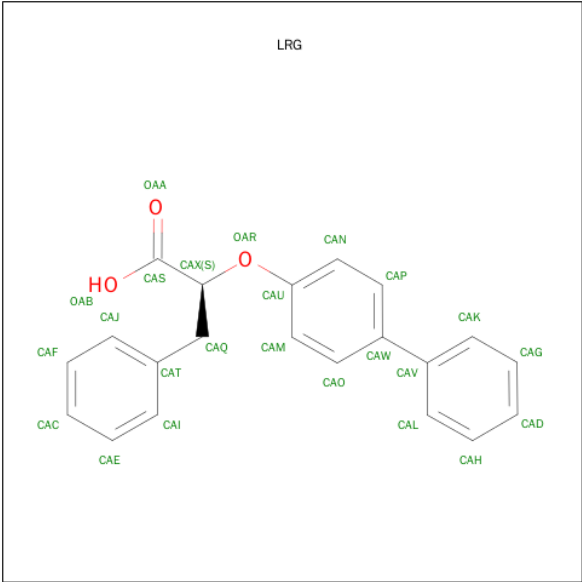
- Molecule 1 is a protein called Peroxisome proliferator-activated receptor gamma.

Mol	Chain	Residues	Atoms					ZeroOcc	AltConf	Trace
1	A	270	Total	C	N	O	S	119	2	0
			2180	1406	357	407	10			
1	B	270	Total	C	N	O	S	127	0	0
			2166	1397	354	405	10			

There are 8 discrepancies between the modelled and reference sequences:

Chain	Residue	Modelled	Actual	Comment	Reference
A	191	GLY	-	EXPRESSION TAG	UNP P37231
A	192	SER	-	EXPRESSION TAG	UNP P37231
A	193	HIS	-	EXPRESSION TAG	UNP P37231
A	194	MET	-	EXPRESSION TAG	UNP P37231
B	191	GLY	-	EXPRESSION TAG	UNP P37231
B	192	SER	-	EXPRESSION TAG	UNP P37231
B	193	HIS	-	EXPRESSION TAG	UNP P37231
B	194	MET	-	EXPRESSION TAG	UNP P37231

- Molecule 2 is (2S)-2-(BIPHENYL-4-YLOXY)-3-PHENYLPROPANOIC ACID (three-letter code: LRG) (formula: C₂₁H₁₈O₃).



Mol	Chain	Residues	Atoms			ZeroOcc	AltConf
2	A	1	Total	C	O	0	0
			24	21	3		

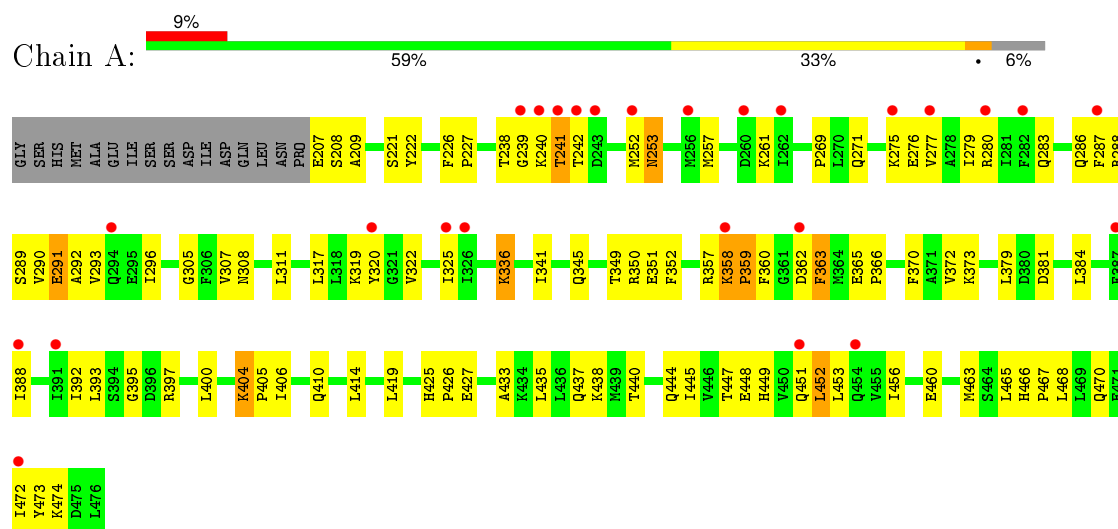
- Molecule 3 is water.

Mol	Chain	Residues	Atoms		ZeroOcc	AltConf
3	A	68	Total	O	0	0
			68	68		
3	B	66	Total	O	0	0
			66	66		

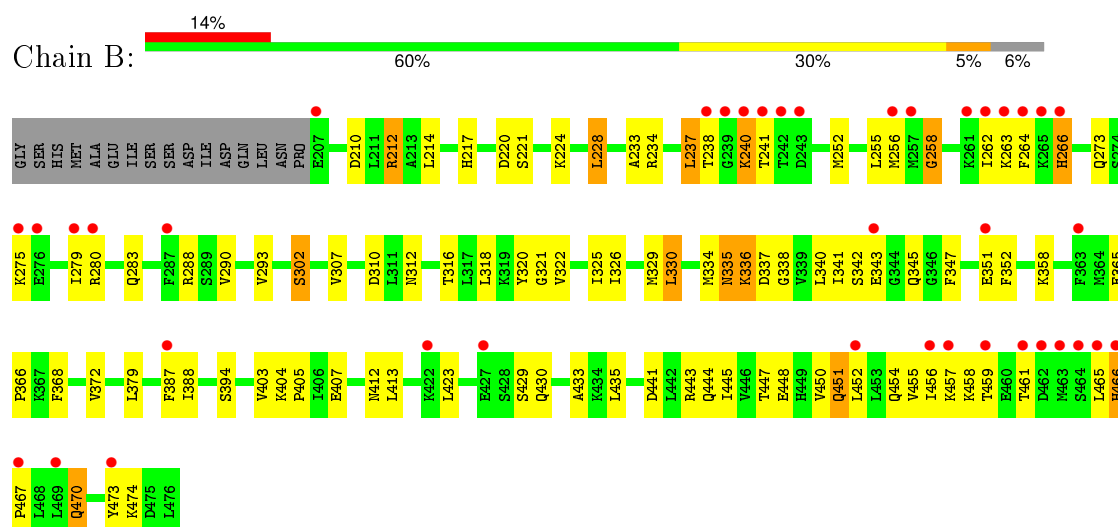
3 Residue-property plots

These plots are drawn for all protein, RNA and DNA chains in the entry. The first graphic for a chain summarises the proportions of errors displayed in the second graphic. The second graphic shows the sequence view annotated by issues in geometry and electron density. Residues are color-coded according to the number of geometric quality criteria for which they contain at least one outlier: green = 0, yellow = 1, orange = 2 and red = 3 or more. A red dot above a residue indicates a poor fit to the electron density ($RSRZ > 2$). Stretches of 2 or more consecutive residues without any outlier are shown as a green connector. Residues present in the sample, but not in the model, are shown in grey.

- Molecule 1: Peroxisome proliferator-activated receptor gamma



- Molecule 1: Peroxisome proliferator-activated receptor gamma



4 Data and refinement statistics

Property	Value	Source
Space group	C 1 2 1	Depositor
Cell constants a, b, c, α , β , γ	93.54Å 61.05Å 119.24Å 90.00° 103.49° 90.00°	Depositor
Resolution (Å)	10.00 – 2.40 24.79 – 2.40	Depositor EDS
% Data completeness (in resolution range)	(Not available) (10.00-2.40) 98.1 (24.79-2.40)	Depositor EDS
R_{merge}	0.09	Depositor
R_{sym}	(Not available)	Depositor
$\langle I/\sigma(I) \rangle$ ¹	2.56 (at 2.41Å)	Xtriage
Refinement program	CNS	Depositor
R, R_{free}	0.248 , 0.305 0.244 , 0.295	Depositor DCC
R_{free} test set	2476 reflections (9.90%)	DCC
Wilson B-factor (Å ²)	48.8	Xtriage
Anisotropy	0.632	Xtriage
Bulk solvent k_{sol} (e/Å ³), B_{sol} (Å ²)	0.37 , 69.3	EDS
Estimated twinning fraction	No twinning to report.	Xtriage
L-test for twinning ²	$\langle L \rangle = 0.49$, $\langle L^2 \rangle = 0.32$	Xtriage
Outliers	0 of 25328 reflections	Xtriage
F_o, F_c correlation	0.93	EDS
Total number of atoms	4504	wwPDB-VP
Average B, all atoms (Å ²)	61.0	wwPDB-VP

Xtriage's analysis on translational NCS is as follows: *The largest off-origin peak in the Patterson function is 6.39% of the height of the origin peak. No significant pseudotranslation is detected.*

¹Intensities estimated from amplitudes.

²Theoretical values of $\langle |L| \rangle$, $\langle L^2 \rangle$ for acentric reflections are 0.5, 0.375 respectively for untwinned datasets, and 0.333, 0.2 for perfectly twinned datasets.

5 Model quality

5.1 Standard geometry

Bond lengths and bond angles in the following residue types are not validated in this section: LRG

The Z score for a bond length (or angle) is the number of standard deviations the observed value is removed from the expected value. A bond length (or angle) with $|Z| > 5$ is considered an outlier worth inspection. RMSZ is the root-mean-square of all Z scores of the bond lengths (or angles).

Mol	Chain	Bond lengths		Bond angles	
		RMSZ	$\# Z > 5$	RMSZ	$\# Z > 5$
1	A	0.39	0/2223	0.58	0/2993
1	B	0.35	0/2203	0.56	0/2967
All	All	0.37	0/4426	0.57	0/5960

There are no bond length outliers.

There are no bond angle outliers.

There are no chirality outliers.

There are no planarity outliers.

5.2 Too-close contacts

In the following table, the Non-H and H(model) columns list the number of non-hydrogen atoms and hydrogen atoms in the chain respectively. The H(added) column lists the number of hydrogen atoms added and optimized by MolProbity. The Clashes column lists the number of clashes within the asymmetric unit, whereas Symm-Clashes lists symmetry related clashes.

Mol	Chain	Non-H	H(model)	H(added)	Clashes	Symm-Clashes
1	A	2180	0	2251	87	0
1	B	2166	0	2232	77	0
2	A	24	0	17	5	0
3	A	68	0	0	12	0
3	B	66	0	0	12	0
All	All	4504	0	4500	165	0

The all-atom clashscore is defined as the number of clashes found per 1000 atoms (including hydrogen atoms). The all-atom clashscore for this structure is 20.

All (165) close contacts within the same asymmetric unit are listed below, sorted by their clash magnitude.

Atom-1	Atom-2	Interatomic distance (Å)	Clash overlap (Å)
1:A:341:ILE:HG22	2:A:1:LRG:HAX	1.38	1.01
1:A:288[B]:ARG:NH1	1:A:291[B]:GLU:HG2	1.76	1.01
1:B:325:ILE:HD12	1:B:388:ILE:HG23	1.45	0.99
1:A:226:PHE:HA	3:A:530:HOH:O	1.66	0.94
1:A:288[B]:ARG:HH11	1:A:291[B]:GLU:HG2	1.37	0.89
1:A:286:GLN:NE2	1:A:465:LEU:HD12	1.90	0.86
1:A:325:ILE:HG23	1:A:388:ILE:HD12	1.60	0.83
1:B:336:LYS:HE3	3:B:96:HOH:O	1.77	0.82
1:B:387:PHE:HB2	3:B:37:HOH:O	1.81	0.79
1:A:288[B]:ARG:NH1	1:A:291[B]:GLU:CG	2.46	0.79
1:B:451:GLN:O	1:B:454:GLN:HG2	1.85	0.77
1:B:266:HIS:HB2	3:B:107:HOH:O	1.83	0.76
1:B:465:LEU:C	1:B:467:PRO:HD2	2.07	0.75
1:B:455:VAL:HA	1:B:458:LYS:HE2	1.69	0.74
1:A:473:TYR:O	1:A:474:LYS:HD2	1.89	0.73
1:B:212:ARG:HH11	1:B:212:ARG:HB3	1.52	0.72
1:A:437:GLN:O	1:A:440:THR:HG22	1.88	0.71
1:A:370:PHE:HA	1:A:373:LYS:HE2	1.72	0.71
1:B:279:ILE:O	1:B:283:GLN:HG3	1.92	0.70
1:A:452:LEU:O	1:A:456:ILE:HD13	1.91	0.69
1:A:238:THR:O	1:A:240:LYS:N	2.26	0.69
1:A:349:THR:HG22	1:A:352:PHE:H	1.58	0.68
1:A:286:GLN:HE22	1:A:465:LEU:HD12	1.57	0.68
3:A:534:HOH:O	1:B:430:GLN:HB2	1.94	0.68
1:A:286:GLN:HE22	1:A:465:LEU:HA	1.58	0.67
1:A:287:PHE:O	1:A:290:VAL:HG12	1.94	0.66
1:B:275:LYS:HE3	1:B:275:LYS:HA	1.77	0.65
1:B:447:THR:O	1:B:450:VAL:HG22	1.99	0.63
1:B:335:ASN:ND2	1:B:337:ASP:H	1.98	0.62
1:B:252:MET:O	1:B:256:MET:HG2	2.00	0.61
1:B:307:VAL:HG22	3:B:12:HOH:O	2.02	0.60
1:B:466:HIS:N	1:B:467:PRO:HD2	2.16	0.60
1:B:220:ASP:O	1:B:224:LYS:HG2	2.02	0.59
1:B:457:LYS:NZ	1:B:461:THR:HG22	2.16	0.59
1:A:286:GLN:NE2	1:A:466:HIS:H	2.00	0.59
1:B:336:LYS:HB2	3:B:96:HOH:O	2.03	0.59
1:B:329:MET:HE3	3:B:59:HOH:O	2.02	0.58
1:B:466:HIS:N	1:B:467:PRO:CD	2.66	0.58
1:B:256:MET:HE1	1:B:280:ARG:HH12	1.69	0.58
1:B:335:ASN:ND2	3:B:96:HOH:O	2.37	0.57
1:B:264:PHE:CE2	1:B:266:HIS:HB3	2.39	0.57
1:A:253:ASN:HB2	3:A:504:HOH:O	2.05	0.57

Continued on next page...

Continued from previous page...

Atom-1	Atom-2	Interatomic distance (Å)	Clash overlap (Å)
1:B:310:ASP:OD2	1:B:312:ASN:HB2	2.05	0.57
1:B:365:GLU:HB3	3:B:110:HOH:O	2.04	0.57
1:A:276:GLU:CD	1:A:357:ARG:HH21	2.07	0.57
1:A:238:THR:C	1:A:240:LYS:H	2.09	0.56
1:A:207:GLU:HG3	1:A:209:ALA:H	1.70	0.56
1:A:279:ILE:O	1:A:283:GLN:HG2	2.06	0.56
1:B:379:LEU:HD21	1:B:435:LEU:HD13	1.87	0.55
1:A:305:GLY:HA2	1:A:308:ASN:HD22	1.71	0.55
1:B:452:LEU:O	1:B:456:ILE:HG12	2.07	0.55
1:A:276:GLU:HG2	1:A:279:ILE:HG12	1.88	0.55
1:A:336:LYS:HE2	1:A:372:VAL:HG21	1.88	0.54
1:A:444:GLN:O	1:A:448:GLU:HG3	2.08	0.54
1:A:289:SER:O	1:A:293:VAL:HG23	2.07	0.54
1:B:217:HIS:HE1	1:B:302:SER:O	1.90	0.54
1:B:368:PHE:O	1:B:372:VAL:HG23	2.08	0.53
1:A:242:THR:O	1:A:242:THR:HG22	2.08	0.53
1:A:433:ALA:O	1:A:437:GLN:HG3	2.09	0.53
1:B:448:GLU:O	1:B:451:GLN:HB3	2.09	0.52
1:B:351:GLU:HG3	3:B:51:HOH:O	2.10	0.52
1:A:435:LEU:O	1:A:438:LYS:HB2	2.09	0.52
2:A:1:LRG:HAQA	2:A:1:LRG:CAN	2.38	0.52
1:B:455:VAL:HA	1:B:458:LYS:CE	2.39	0.52
1:A:363:PHE:CD1	1:A:452:LEU:HD13	2.45	0.51
1:A:456:ILE:HG21	1:A:463:MET:CE	2.41	0.51
1:A:292:ALA:O	1:A:296:ILE:HG13	2.11	0.51
1:A:466:HIS:ND1	1:A:467:PRO:HD2	2.26	0.51
1:B:365:GLU:N	1:B:366:PRO:HD2	2.26	0.51
1:A:320:TYR:CB	1:A:397:ARG:HD2	2.39	0.51
1:B:441:ASP:O	1:B:445:ILE:HG12	2.10	0.51
1:B:340:LEU:O	1:B:341:ILE:HD12	2.11	0.50
1:A:226:PHE:HD1	3:A:530:HOH:O	1.94	0.50
3:A:512:HOH:O	1:B:429:SER:HB3	2.11	0.50
1:B:430:GLN:HG3	1:B:433:ALA:HB3	1.93	0.50
1:A:325:ILE:HD11	1:A:392:ILE:HG13	1.94	0.50
1:A:325:ILE:HD11	1:A:392:ILE:CG1	2.42	0.50
1:A:336:LYS:HG2	1:A:372:VAL:CG2	2.41	0.50
1:A:277:VAL:HA	1:A:280:ARG:HD3	1.94	0.49
1:A:370:PHE:HB2	1:A:445:ILE:HD11	1.94	0.49
1:A:379:LEU:HD11	1:A:435:LEU:HD13	1.95	0.49
1:B:290:VAL:HG21	1:B:473:TYR:CD1	2.48	0.49
1:A:425:HIS:N	1:A:426:PRO:HD3	2.28	0.49

Continued on next page...

Continued from previous page...

Atom-1	Atom-2	Interatomic distance (Å)	Clash overlap (Å)
1:A:393:LEU:O	1:A:410:GLN:HB2	2.13	0.48
1:A:257:MET:O	1:A:261:LYS:HG2	2.13	0.48
1:A:404:LYS:N	1:A:405:PRO:HD2	2.29	0.48
1:B:212:ARG:HD2	3:B:66:HOH:O	2.14	0.48
1:B:255:LEU:HD22	1:B:352:PHE:CZ	2.48	0.48
1:A:317:LEU:HD11	1:A:406:ILE:HD13	1.95	0.47
1:A:359:PRO:HG2	1:A:360:PHE:CD1	2.49	0.47
1:B:403:VAL:HG12	1:B:407:GLU:HG3	1.96	0.47
1:B:466:HIS:O	1:B:470:GLN:HB3	2.14	0.47
1:A:242:THR:HA	3:A:541:HOH:O	2.13	0.47
1:A:307:VAL:HG22	3:A:480:HOH:O	2.13	0.47
1:B:214:LEU:HD21	1:B:413:LEU:HD23	1.96	0.47
1:B:275:LYS:CE	1:B:275:LYS:HA	2.45	0.46
1:B:338:GLY:HA3	1:B:347:PHE:CZ	2.51	0.46
1:A:395:GLY:HA2	1:A:400:LEU:CD1	2.45	0.46
1:B:263:LYS:HE3	1:B:263:LYS:HA	1.98	0.46
1:B:293:VAL:HG22	1:B:322:VAL:HG11	1.97	0.46
1:A:320:TYR:HB3	1:A:397:ARG:HD2	1.98	0.46
1:A:336:LYS:CD	1:A:372:VAL:HG21	2.46	0.46
1:A:336:LYS:HD3	1:A:350:ARG:NH1	2.32	0.45
1:B:237:LEU:HB3	1:B:238:THR:H	1.58	0.45
1:B:275:LYS:HG2	1:B:280:ARG:HD2	1.99	0.45
1:A:336:LYS:HD3	1:A:350:ARG:HH12	1.80	0.45
1:A:349:THR:HG22	1:A:351:GLU:N	2.31	0.45
1:A:288[B]:ARG:HD2	1:A:288[B]:ARG:HA	1.65	0.45
1:A:357:ARG:HD2	1:A:359:PRO:HD2	1.98	0.45
1:A:447:THR:HG22	1:A:451:GLN:HE21	1.80	0.45
1:B:451:GLN:HG2	1:B:452:LEU:N	2.30	0.45
1:B:321:GLY:O	1:B:325:ILE:HG12	2.17	0.45
1:B:262:ILE:HD11	1:B:345:GLN:HB2	1.99	0.45
1:B:326:ILE:O	1:B:330:LEU:HB2	2.17	0.44
1:A:474:LYS:HE2	3:A:528:HOH:O	2.17	0.44
1:A:345:GLN:HG3	3:A:535:HOH:O	2.16	0.44
1:A:456:ILE:N	1:A:456:ILE:HD12	2.33	0.44
1:A:252:MET:HG2	3:A:543:HOH:O	2.17	0.44
1:B:470:GLN:HE21	1:B:470:GLN:HB3	1.54	0.43
1:A:208:SER:HB2	1:A:419:LEU:HD21	2.00	0.43
1:A:447:THR:O	1:A:451:GLN:HG2	2.18	0.43
2:A:1:LRG:HAO	2:A:1:LRG:HAK	1.82	0.43
1:B:288:ARG:O	1:B:288:ARG:HD2	2.18	0.43
2:A:1:LRG:HAL	2:A:1:LRG:HAP	1.81	0.43

Continued on next page...

Continued from previous page...

Atom-1	Atom-2	Interatomic distance (Å)	Clash overlap (Å)
1:A:384:LEU:O	1:A:388:ILE:HG12	2.18	0.43
1:A:336:LYS:CE	1:A:372:VAL:HG21	2.49	0.43
1:A:468:LEU:HD13	1:A:468:LEU:C	2.39	0.43
1:B:256:MET:C	1:B:258:GLY:H	2.22	0.43
1:B:343:GLU:HG3	1:B:343:GLU:O	2.18	0.43
1:A:414:LEU:HB2	1:B:430:GLN:HG2	2.01	0.42
1:B:337:ASP:N	3:B:96:HOH:O	2.52	0.42
1:A:288[B]:ARG:HH12	1:A:291[B]:GLU:HG2	1.75	0.42
1:B:341:ILE:CG2	1:B:342:SER:N	2.82	0.42
1:B:341:ILE:HG23	1:B:342:SER:N	2.35	0.42
1:A:365:GLU:N	1:A:366:PRO:HD2	2.35	0.42
1:B:435:LEU:HD21	3:B:37:HOH:O	2.20	0.42
1:A:319:LYS:HD3	1:A:320:TYR:CE1	2.55	0.42
1:B:290:VAL:HG21	1:B:473:TYR:CE1	2.55	0.42
1:B:316:THR:O	1:B:320:TYR:HD1	2.02	0.42
1:B:228:LEU:HD22	1:B:233:ALA:HB2	2.03	0.41
1:A:293:VAL:HG22	1:A:322:VAL:HG11	2.02	0.41
1:A:319:LYS:O	1:A:472:ILE:HG23	2.20	0.41
1:B:336:LYS:H	1:B:336:LYS:HD3	1.85	0.41
1:A:336:LYS:HG2	1:A:372:VAL:HG22	2.01	0.41
1:B:457:LYS:HZ3	1:B:461:THR:HG22	1.84	0.41
1:A:288[A]:ARG:HG3	2:A:1:LRG:HAI	2.01	0.41
1:A:465:LEU:HD23	1:A:470:GLN:HG3	2.02	0.41
1:A:456:ILE:HG21	1:A:463:MET:HE1	2.01	0.41
1:A:311:LEU:HD23	1:A:311:LEU:C	2.41	0.41
1:B:336:LYS:HE3	1:B:336:LYS:HB2	1.96	0.41
1:A:349:THR:HG23	3:A:484:HOH:O	2.20	0.41
1:A:358:LYS:HB2	1:A:359:PRO:HD3	2.03	0.41
1:B:457:LYS:HZ2	1:B:461:THR:HG22	1.83	0.41
1:B:240:LYS:O	1:B:241:THR:C	2.60	0.41
1:B:456:ILE:O	1:B:459:THR:HB	2.21	0.40
1:A:227:PRO:HD3	3:A:530:HOH:O	2.22	0.40
1:B:404:LYS:HB3	1:B:405:PRO:CD	2.51	0.40
1:A:222:TYR:CE2	1:A:381:ASP:HB3	2.57	0.40
1:B:212:ARG:HE	1:B:423:LEU:CD1	2.35	0.40
1:A:414:LEU:CB	1:B:430:GLN:HG2	2.51	0.40
1:B:262:ILE:HD11	1:B:345:GLN:CB	2.51	0.40
1:A:208:SER:HB2	1:A:419:LEU:CD2	2.51	0.40
1:B:234:ARG:NH2	1:B:334:MET:O	2.46	0.40
1:A:449:HIS:O	1:A:453:LEU:HD13	2.22	0.40

There are no symmetry-related clashes.

5.3 Torsion angles

5.3.1 Protein backbone

In the following table, the Percentiles column shows the percent Ramachandran outliers of the chain as a percentile score with respect to all X-ray entries followed by that with respect to entries of similar resolution.

The Analysed column shows the number of residues for which the backbone conformation was analysed, and the total number of residues.

Mol	Chain	Analysed	Favoured	Allowed	Outliers	Percentiles	
1	A	270/286 (94%)	251 (93%)	12 (4%)	7 (3%)	7	6
1	B	268/286 (94%)	237 (88%)	24 (9%)	7 (3%)	7	6
All	All	538/572 (94%)	488 (91%)	36 (7%)	14 (3%)	7	6

All (14) Ramachandran outliers are listed below:

Mol	Chain	Res	Type
1	A	239	GLY
1	B	474	LYS
1	B	237	LEU
1	B	266	HIS
1	B	394	SER
1	A	275	LYS
1	B	240	LYS
1	A	269	PRO
1	A	336	LYS
1	A	241	THR
1	A	358	LYS
1	A	359	PRO
1	B	258	GLY
1	B	466	HIS

5.3.2 Protein sidechains

In the following table, the Percentiles column shows the percent sidechain outliers of the chain as a percentile score with respect to all X-ray entries followed by that with respect to entries of similar resolution.

The Analysed column shows the number of residues for which the sidechain conformation was analysed, and the total number of residues.

Mol	Chain	Analysed	Rotameric	Outliers	Percentiles	
1	A	245/257 (95%)	233 (95%)	12 (5%)	31	48
1	B	243/257 (95%)	227 (93%)	16 (7%)	21	32
All	All	488/514 (95%)	460 (94%)	28 (6%)	26	40

All (28) residues with a non-rotameric sidechain are listed below:

Mol	Chain	Res	Type
1	A	221	SER
1	A	241	THR
1	A	253	ASN
1	A	271	GLN
1	A	291[A]	GLU
1	A	291[B]	GLU
1	A	362	ASP
1	A	363	PHE
1	A	404	LYS
1	A	427	GLU
1	A	452	LEU
1	A	460	GLU
1	B	210	ASP
1	B	212	ARG
1	B	221	SER
1	B	228	LEU
1	B	273	GLN
1	B	302	SER
1	B	318	LEU
1	B	330	LEU
1	B	335	ASN
1	B	336	LYS
1	B	358	LYS
1	B	412	ASN
1	B	443	ARG
1	B	444	GLN
1	B	451	GLN
1	B	470	GLN

Some sidechains can be flipped to improve hydrogen bonding and reduce clashes. All (16) such sidechains are listed below:

Mol	Chain	Res	Type
1	A	286	GLN
1	A	308	ASN

Continued on next page...

Continued from previous page...

Mol	Chain	Res	Type
1	A	314	GLN
1	A	410	GLN
1	A	451	GLN
1	A	454	GLN
1	A	470	GLN
1	B	217	HIS
1	B	253	ASN
1	B	335	ASN
1	B	412	ASN
1	B	415	GLN
1	B	430	GLN
1	B	437	GLN
1	B	451	GLN
1	B	470	GLN

5.3.3 RNA ⓘ

There are no RNA molecules in this entry.

5.4 Non-standard residues in protein, DNA, RNA chains ⓘ

There are no non-standard protein/DNA/RNA residues in this entry.

5.5 Carbohydrates ⓘ

There are no carbohydrates in this entry.

5.6 Ligand geometry ⓘ

1 ligand is modelled in this entry.

In the following table, the Counts columns list the number of bonds (or angles) for which Mogul statistics could be retrieved, the number of bonds (or angles) that are observed in the model and the number of bonds (or angles) that are defined in the chemical component dictionary. The Link column lists molecule types, if any, to which the group is linked. The Z score for a bond length (or angle) is the number of standard deviations the observed value is removed from the expected value. A bond length (or angle) with $|Z| > 2$ is considered an outlier worth inspection. RMSZ is the root-mean-square of all Z scores of the bond lengths (or angles).

Mol	Type	Chain	Res	Link	Bond lengths			Bond angles		
					Counts	RMSZ	# Z > 2	Counts	RMSZ	# Z > 2
2	LRG	A	1	-	21,26,26	0.91	1 (4%)	29,34,34	0.69	1 (3%)

In the following table, the Chirals column lists the number of chiral outliers, the number of chiral centers analysed, the number of these observed in the model and the number defined in the chemical component dictionary. Similar counts are reported in the Torsion and Rings columns. '-' means no outliers of that kind were identified.

Mol	Type	Chain	Res	Link	Chirals	Torsions	Rings
2	LRG	A	1	-	1/1/2/2	0/12/16/16	0/3/3/3

All (1) bond length outliers are listed below:

Mol	Chain	Res	Type	Atoms	Z	Observed(Å)	Ideal(Å)
2	A	1	LRG	CAW-CAV	-3.68	1.39	1.49

All (1) bond angle outliers are listed below:

Mol	Chain	Res	Type	Atoms	Z	Observed(°)	Ideal(°)
2	A	1	LRG	OAR-CAX-CAQ	2.27	111.74	107.52

All (1) chirality outliers are listed below:

Mol	Chain	Res	Type	Atom
2	A	1	LRG	CAX

There are no torsion outliers.

There are no ring outliers.

1 monomer is involved in 5 short contacts:

Mol	Chain	Res	Type	Clashes	Symm-Clashes
2	A	1	LRG	5	0

5.7 Other polymers [i](#)

There are no such residues in this entry.

5.8 Polymer linkage issues [i](#)

There are no chain breaks in this entry.

6 Fit of model and data ⓘ

6.1 Protein, DNA and RNA chains ⓘ

In the following table, the column labelled ‘#RSRZ> 2’ contains the number (and percentage) of RSRZ outliers, followed by percent RSRZ outliers for the chain as percentile scores relative to all X-ray entries and entries of similar resolution. The OWAB column contains the minimum, median, 95th percentile and maximum values of the occupancy-weighted average B-factor per residue. The column labelled ‘Q< 0.9’ lists the number of (and percentage) of residues with an average occupancy less than 0.9.

Mol	Chain	Analysed	<RSRZ>	#RSRZ>2	OWAB(Å ²)	Q<0.9
1	A	256/286 (89%)	0.47	26 (10%) 9 8	29, 51, 93, 100	0
1	B	256/286 (89%)	0.86	39 (15%) 3 3	27, 53, 100, 100	2 (0%)
All	All	512/572 (89%)	0.67	65 (12%) 5 5	27, 52, 100, 100	2 (0%)

All (65) RSRZ outliers are listed below:

Mol	Chain	Res	Type	RSRZ
1	B	461	THR	11.6
1	B	462	ASP	11.4
1	B	465	LEU	10.1
1	B	463	MET	8.7
1	B	464	SER	7.2
1	B	242	THR	6.4
1	B	257	MET	6.3
1	B	266	HIS	6.0
1	B	241	THR	5.4
1	B	261	LYS	5.2
1	B	263	LYS	5.2
1	A	240	LYS	4.9
1	B	238	THR	4.7
1	A	243	ASP	4.6
1	B	459	THR	4.3
1	B	264	PHE	4.2
1	B	427	GLU	4.1
1	A	239	GLY	4.1
1	B	207	GLU	4.0
1	B	240	LYS	3.8
1	B	243	ASP	3.7
1	B	466	HIS	3.6
1	B	467	PRO	3.6
1	A	260	ASP	3.4

Continued on next page...

Continued from previous page...

Mol	Chain	Res	Type	RSRZ
1	B	456	ILE	3.4
1	B	276	GLU	3.2
1	B	239	GLY	3.2
1	B	422	LYS	3.1
1	B	469	LEU	3.1
1	A	256	MET	3.0
1	B	351	GLU	3.0
1	A	358	LYS	2.8
1	B	265	LYS	2.8
1	B	473	TYR	2.8
1	A	280	ARG	2.8
1	B	275	LYS	2.8
1	A	391	ILE	2.6
1	A	294	GLN	2.6
1	A	454	GLN	2.6
1	A	287	PHE	2.5
1	B	343	GLU	2.5
1	A	451	GLN	2.4
1	A	387	PHE	2.4
1	B	452	LEU	2.3
1	B	363	PHE	2.3
1	A	277	VAL	2.3
1	A	325	ILE	2.3
1	B	287	PHE	2.3
1	A	242	THR	2.3
1	A	320	TYR	2.3
1	A	362	ASP	2.3
1	A	252	MET	2.2
1	A	388	ILE	2.2
1	B	457	LYS	2.2
1	B	256	MET	2.2
1	B	280	ARG	2.2
1	A	275	LYS	2.2
1	A	282	PHE	2.2
1	A	241	THR	2.1
1	A	262	ILE	2.1
1	A	472	ILE	2.1
1	B	279	ILE	2.1
1	A	326	ILE	2.0
1	B	262	ILE	2.0
1	B	387	PHE	2.0

6.2 Non-standard residues in protein, DNA, RNA chains [i](#)

There are no non-standard protein/DNA/RNA residues in this entry.

6.3 Carbohydrates [i](#)

There are no carbohydrates in this entry.

6.4 Ligands [i](#)

In the following table, the Atoms column lists the number of modelled atoms in the group and the number defined in the chemical component dictionary. LLDF column lists the quality of electron density of the group with respect to its neighbouring residues in protein, DNA or RNA chains. The B-factors column lists the minimum, median, 95th percentile and maximum values of B factors of atoms in the group. The column labelled 'Q< 0.9' lists the number of atoms with occupancy less than 0.9.

Mol	Type	Chain	Res	Atoms	RSCC	RSR	LLDF	B-factors(\AA^2)	Q<0.9
2	LRG	A	1	24/24	0.65	0.36	2.74	78,85,87,87	0

6.5 Other polymers [i](#)

There are no such residues in this entry.