



Full wwPDB X-ray Structure Validation Report ⓘ

Feb 1, 2016 – 01:40 AM GMT

PDB ID : 2DWC
Title : Crystal structure of Probable phosphoribosylglycinamide formyl transferase from *Pyrococcus horikoshii* OT3 complexed with ADP
Authors : Yoshikawa, S.; Arai, R.; Kamo-Uchikubo, T.; Shirouzu, M.; Yokoyama, S.; RIKEN Structural Genomics/Proteomics Initiative (RSGI)
Deposited on : 2006-08-10
Resolution : 1.70 Å(reported)

This is a Full wwPDB X-ray Structure Validation Report for a publicly released PDB entry.
We welcome your comments at validation@mail.wwpdb.org
A user guide is available at
<http://wwpdb.org/validation/2016/XrayValidationReportHelp>
with specific help available everywhere you see the ⓘ symbol.

The following versions of software and data (see [references ⓘ](#)) were used in the production of this report:

MolProbity : 4.02b-467
Mogul : 1.7 (RC4), CSD as536be (2015)
Xtriage (Phenix) : 1.9-1692
EDS : rb-20026688
Percentile statistics : 20151230.v01 (using entries in the PDB archive December 30th 2015)
Refmac : 5.8.0135
CCP4 : 6.5.0
Ideal geometry (proteins) : Engh & Huber (2001)
Ideal geometry (DNA, RNA) : Parkinson et al. (1996)
Validation Pipeline (wwPDB-VP) : trunk26865

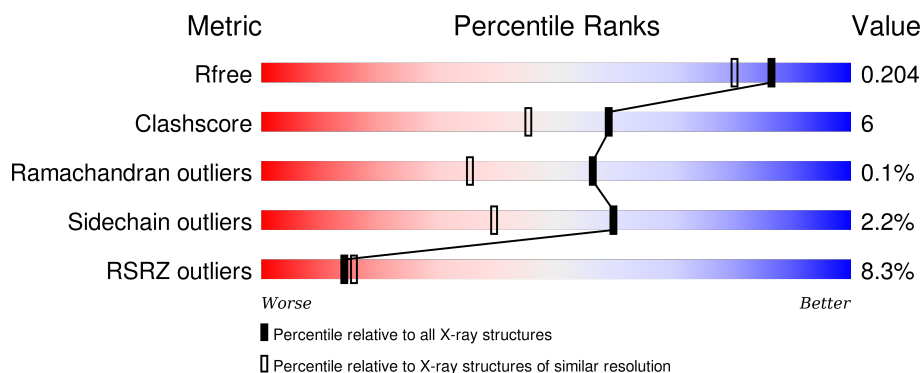
1 Overall quality at a glance

The following experimental techniques were used to determine the structure:

X-RAY DIFFRACTION

The reported resolution of this entry is 1.70 Å.

Percentile scores (ranging between 0-100) for global validation metrics of the entry are shown in the following graphic. The table shows the number of entries on which the scores are based.



Metric	Whole archive (#Entries)	Similar resolution (#Entries, resolution range(Å))
R_{free}	91344	3190 (1.70-1.70)
Clashscore	102246	3585 (1.70-1.70)
Ramachandran outliers	100387	3527 (1.70-1.70)
Sidechain outliers	100360	3527 (1.70-1.70)
RSRZ outliers	91569	3200 (1.70-1.70)

The table below summarises the geometric issues observed across the polymeric chains and their fit to the electron density. The red, orange, yellow and green segments on the lower bar indicate the fraction of residues that contain outliers for ≥ 3 , 2, 1 and 0 types of geometric quality criteria. A grey segment represents the fraction of residues that are not modelled. The numeric value for each fraction is indicated below the corresponding segment, with a dot representing fractions $\leq 5\%$. The upper red bar (where present) indicates the fraction of residues that have poor fit to the electron density. The numeric value is given above the bar.

Mol	Chain	Length	Quality of chain
1	A	433	<div> <div>9%</div> <div>80%13%6%</div> </div>
1	B	433	<div> <div>7%</div> <div>84%9%6%</div> </div>

2 Entry composition [i](#)

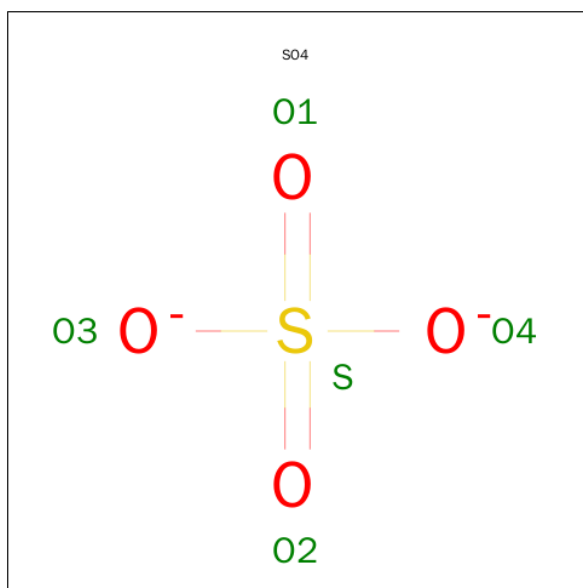
There are 4 unique types of molecules in this entry. The entry contains 7060 atoms, of which 0 are hydrogens and 0 are deuteriums.

In the tables below, the ZeroOcc column contains the number of atoms modelled with zero occupancy, the AltConf column contains the number of residues with at least one atom in alternate conformation and the Trace column contains the number of residues modelled with at most 2 atoms.

- Molecule 1 is a protein called 433aa long hypothetical phosphoribosylglycinamide formyl transferase.

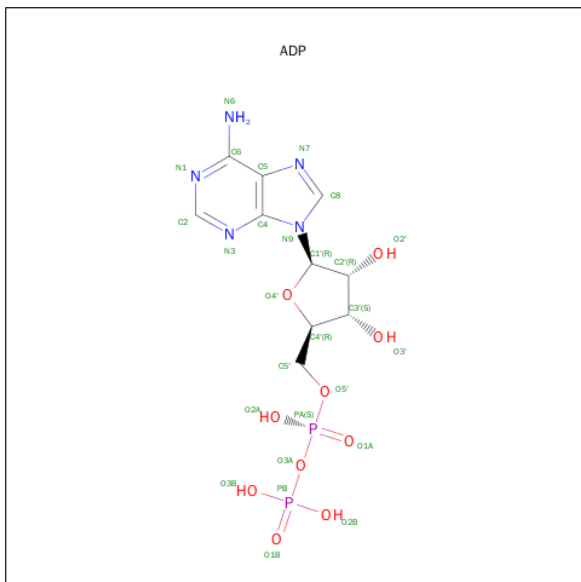
Mol	Chain	Residues	Atoms					ZeroOcc	AltConf	Trace
1	A	406	Total	C	N	O	S	0	0	0
			3224	2068	552	590	14			
1	B	409	Total	C	N	O	S	0	0	0
			3243	2078	556	595	14			

- Molecule 2 is SULFATE ION (three-letter code: SO4) (formula: O₄S).



Mol	Chain	Residues	Atoms			ZeroOcc	AltConf
2	B	1	Total	O	S	0	0
			5	4	1		
2	A	1	Total	O	S	0	0
			5	4	1		
2	B	1	Total	O	S	0	0
			5	4	1		
2	A	1	Total	O	S	0	0
			5	4	1		

- Molecule 3 is ADENOSINE-5'-DIPHOSPHATE (three-letter code: ADP) (formula: $\text{C}_{10}\text{H}_{15}\text{N}_5\text{O}_{10}\text{P}_2$).



Mol	Chain	Residues	Atoms					ZeroOcc	AltConf
3	A	1	Total 27	C 10	N 5	O 10	P 2	0	0
3	B	1	Total 27	C 10	N 5	O 10	P 2	0	0

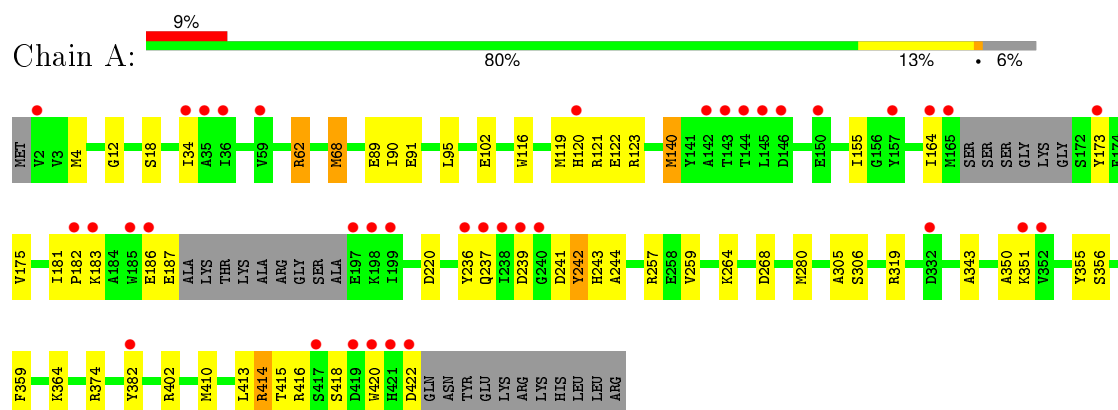
- Molecule 4 is water.

Mol	Chain	Residues	Atoms	ZeroOcc	AltConf
4	A	251	Total O 251 251	0	0
4	B	268	Total O 268 268	0	0

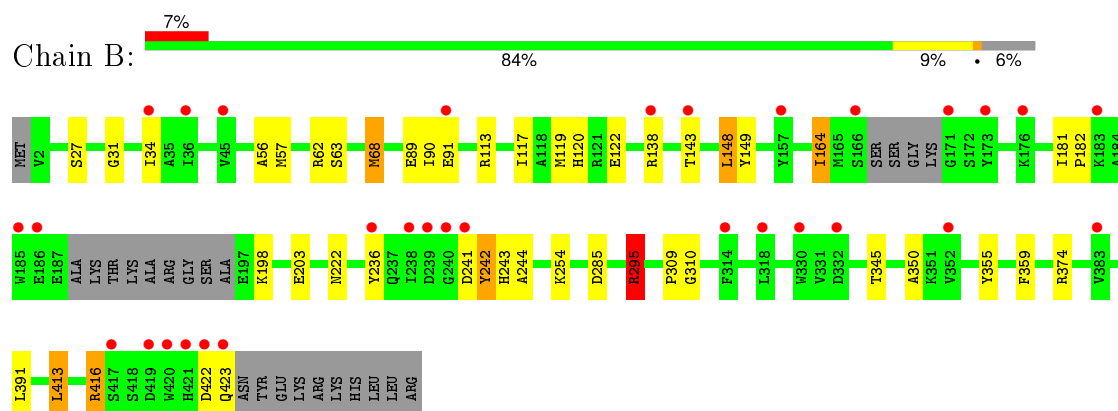
3 Residue-property plots [i](#)

These plots are drawn for all protein, RNA and DNA chains in the entry. The first graphic for a chain summarises the proportions of errors displayed in the second graphic. The second graphic shows the sequence view annotated by issues in geometry and electron density. Residues are color-coded according to the number of geometric quality criteria for which they contain at least one outlier: green = 0, yellow = 1, orange = 2 and red = 3 or more. A red dot above a residue indicates a poor fit to the electron density ($RSRZ > 2$). Stretches of 2 or more consecutive residues without any outlier are shown as a green connector. Residues present in the sample, but not in the model, are shown in grey.

- Molecule 1: 433aa long hypothetical phosphoribosylglycinamide formyl transferase



- Molecule 1: 433aa long hypothetical phosphoribosylglycinamide formyl transferase



4 Data and refinement statistics

Property	Value	Source
Space group	C 2 2 21	Depositor
Cell constants a, b, c, α , β , γ	103.73Å 212.52Å 120.61Å 90.00° 90.00° 90.00°	Depositor
Resolution (Å)	39.33 – 1.70 39.33 – 1.70	Depositor EDS
% Data completeness (in resolution range)	92.2 (39.33-1.70) 92.3 (39.33-1.70)	Depositor EDS
R_{merge}	(Not available)	Depositor
R_{sym}	0.04	Depositor
$\langle I/\sigma(I) \rangle$ ¹	3.28 (at 1.70Å)	Xtriage
Refinement program	CNS 1.1	Depositor
R, R_{free}	0.181 , 0.204 0.181 , 0.204	Depositor DCC
R_{free} test set	13365 reflections (9.96%)	DCC
Wilson B-factor (Å ²)	20.5	Xtriage
Anisotropy	0.181	Xtriage
Bulk solvent k_{sol} (e/Å ³), B_{sol} (Å ²)	0.38 , 50.4	EDS
Estimated twinning fraction	No twinning to report.	Xtriage
L-test for twinning ²	$\langle L \rangle = 0.49$, $\langle L^2 \rangle = 0.33$	Xtriage
Outliers	0 of 142070 reflections	Xtriage
F_o, F_c correlation	0.96	EDS
Total number of atoms	7060	wwPDB-VP
Average B, all atoms (Å ²)	29.0	wwPDB-VP

Xtriage's analysis on translational NCS is as follows: *The largest off-origin peak in the Patterson function is 3.57% of the height of the origin peak. No significant pseudotranslation is detected.*

¹Intensities estimated from amplitudes.

²Theoretical values of $\langle |L| \rangle$, $\langle L^2 \rangle$ for acentric reflections are 0.5, 0.375 respectively for untwinned datasets, and 0.333, 0.2 for perfectly twinned datasets.

5 Model quality

5.1 Standard geometry

Bond lengths and bond angles in the following residue types are not validated in this section: SO4, ADP

The Z score for a bond length (or angle) is the number of standard deviations the observed value is removed from the expected value. A bond length (or angle) with $|Z| > 5$ is considered an outlier worth inspection. RMSZ is the root-mean-square of all Z scores of the bond lengths (or angles).

Mol	Chain	Bond lengths		Bond angles	
		RMSZ	$\# Z > 5$	RMSZ	$\# Z > 5$
1	A	0.70	1/3301 (0.0%)	0.84	7/4474 (0.2%)
1	B	0.72	1/3320 (0.0%)	0.81	2/4499 (0.0%)
All	All	0.71	2/6621 (0.0%)	0.82	9/8973 (0.1%)

All (2) bond length outliers are listed below:

Mol	Chain	Res	Type	Atoms	Z	Observed(Å)	Ideal(Å)
1	A	68	MET	CB-CG	6.01	1.70	1.51
1	B	68	MET	CB-CG	5.42	1.68	1.51

All (9) bond angle outliers are listed below:

Mol	Chain	Res	Type	Atoms	Z	Observed(°)	Ideal(°)
1	B	295	ARG	NE-CZ-NH1	9.71	125.16	120.30
1	B	295	ARG	NE-CZ-NH2	-9.16	115.72	120.30
1	A	319	ARG	NE-CZ-NH1	6.67	123.63	120.30
1	A	414	ARG	NE-CZ-NH2	6.46	123.53	120.30
1	A	62	ARG	NE-CZ-NH1	-6.28	117.16	120.30
1	A	414	ARG	NE-CZ-NH1	-6.25	117.18	120.30
1	A	220	ASP	CB-CG-OD1	5.74	123.46	118.30
1	A	319	ARG	NE-CZ-NH2	-5.35	117.63	120.30
1	A	220	ASP	CB-CG-OD2	-5.26	113.57	118.30

There are no chirality outliers.

There are no planarity outliers.

5.2 Too-close contacts ⓘ

In the following table, the Non-H and H(model) columns list the number of non-hydrogen atoms and hydrogen atoms in the chain respectively. The H(added) column lists the number of hydrogen atoms added and optimized by MolProbity. The Clashes column lists the number of clashes within the asymmetric unit, whereas Symm-Clashes lists symmetry related clashes.

Mol	Chain	Non-H	H(model)	H(added)	Clashes	Symm-Clashes
1	A	3224	0	3213	46	0
1	B	3243	0	3229	30	0
2	A	10	0	0	0	0
2	B	10	0	0	0	0
3	A	27	0	12	1	0
3	B	27	0	12	1	0
4	A	251	0	0	2	0
4	B	268	0	0	3	0
All	All	7060	0	6466	76	0

The all-atom clashscore is defined as the number of clashes found per 1000 atoms (including hydrogen atoms). The all-atom clashscore for this structure is 6.

All (76) close contacts within the same asymmetric unit are listed below, sorted by their clash magnitude.

Atom-1	Atom-2	Interatomic distance (Å)	Clash overlap (Å)
1:A:237:GLN:HB3	1:A:242:TYR:HA	1.63	0.78
1:A:120:HIS:CE1	1:A:122:GLU:HB3	2.21	0.75
1:A:62:ARG:HG3	1:A:62:ARG:HH11	1.55	0.71
1:A:120:HIS:HE1	1:A:122:GLU:HB3	1.55	0.71
1:A:351:LYS:HD3	1:A:422:ASP:O	1.91	0.70
1:B:34:ILE:HD12	1:B:89:GLU:OE2	1.93	0.68
1:B:148:LEU:HD13	1:B:181:ILE:HG23	1.77	0.66
1:A:186:GLU:C	1:A:187:GLU:HG2	2.14	0.65
1:A:140:MET:HG2	1:A:155:ILE:HD11	1.79	0.62
1:B:295:ARG:NH2	4:B:1142:HOH:O	2.31	0.62
1:A:359:PHE:CD2	1:A:413:LEU:HD22	2.35	0.61
1:B:359:PHE:CD2	1:B:413:LEU:HD22	2.36	0.60
1:B:345:THR:HG22	1:B:391:LEU:HD23	1.84	0.59
1:B:113:ARG:NH1	1:B:117:ILE:HD11	2.17	0.59
1:B:62:ARG:HH11	1:B:62:ARG:HG3	1.67	0.59
1:B:359:PHE:HD2	1:B:413:LEU:HD22	1.68	0.58
1:A:116:TRP:CH2	1:A:123:ARG:HD2	2.38	0.58
1:A:62:ARG:HG3	1:A:62:ARG:NH1	2.18	0.58
1:A:181:ILE:HB	1:A:182:PRO:HD3	1.84	0.58

Continued on next page...

Continued from previous page...

Atom-1	Atom-2	Interatomic distance (Å)	Clash overlap (Å)
1:A:4:MET:CE	1:A:102:GLU:HG3	2.34	0.57
1:A:364:LYS:HB3	1:A:410:MET:CE	2.34	0.57
1:A:264:LYS:HE2	1:A:268:ASP:OD2	2.05	0.57
1:B:91:GLU:HG3	1:B:119:MET:HB3	1.87	0.57
1:A:4:MET:HE1	1:A:102:GLU:HG3	1.87	0.56
1:B:254:LYS:HD2	1:B:285:ASP:OD1	2.07	0.55
1:A:120:HIS:NE2	1:A:164:ILE:HD12	2.22	0.55
1:A:414:ARG:HB2	1:A:420:TRP:CE3	2.42	0.55
1:B:422:ASP:O	1:B:423:GLN:HB2	2.08	0.54
1:B:236:TYR:CE2	1:B:244:ALA:HB3	2.44	0.53
3:B:502:ADP:O1A	3:B:502:ADP:O3B	2.26	0.53
1:A:374:ARG:HH22	1:B:310:GLY:CA	2.22	0.53
1:A:62:ARG:CG	1:A:62:ARG:HH11	2.20	0.51
1:A:259:VAL:HG13	1:A:280:MET:HE1	1.93	0.51
1:A:68:MET:HE3	1:A:90:ILE:HD11	1.93	0.51
1:B:138:ARG:H	1:B:203:GLU:HG2	1.75	0.50
1:A:34:ILE:HD12	1:A:89:GLU:OE2	2.11	0.50
1:A:120:HIS:HE2	1:A:164:ILE:HD12	1.77	0.49
1:A:364:LYS:HB3	1:A:410:MET:HE1	1.94	0.49
1:A:236:TYR:CE2	1:A:244:ALA:HB3	2.46	0.49
1:B:143:THR:O	1:B:143:THR:HG22	2.13	0.49
1:A:173:TYR:CZ	1:A:183:LYS:HG2	2.47	0.49
1:B:222:ASN:ND2	4:B:1183:HOH:O	2.46	0.49
1:B:68:MET:HE3	1:B:90:ILE:HD11	1.94	0.48
1:A:95:LEU:HD21	1:A:119:MET:CE	2.43	0.48
1:A:259:VAL:HG13	1:A:280:MET:CE	2.45	0.46
1:B:113:ARG:HD2	4:B:1034:HOH:O	2.14	0.46
1:A:356:SER:HB2	1:A:416:ARG:HG3	1.98	0.46
1:A:119:MET:HE3	4:A:1102:HOH:O	2.16	0.46
1:A:402:ARG:HG3	4:A:1195:HOH:O	2.17	0.45
1:B:138:ARG:N	1:B:203:GLU:HG2	2.32	0.45
3:A:501:ADP:H2'	3:A:501:ADP:H5'2	1.85	0.45
1:B:416:ARG:NH1	1:B:416:ARG:CG	2.78	0.44
1:A:95:LEU:HD11	1:A:119:MET:HE2	2.00	0.43
1:B:120:HIS:CE1	1:B:122:GLU:HB3	2.53	0.43
1:B:181:ILE:N	1:B:182:PRO:HD2	2.34	0.43
1:A:62:ARG:CG	1:A:62:ARG:NH1	2.79	0.43
1:A:414:ARG:HD2	1:A:415:THR:O	2.19	0.43
1:A:359:PHE:HD2	1:A:413:LEU:HD22	1.84	0.42
1:A:95:LEU:HD21	1:A:119:MET:HE2	2.01	0.42
1:B:31:GLY:HA2	1:B:89:GLU:OE2	2.20	0.42

Continued on next page...

Continued from previous page...

Atom-1	Atom-2	Interatomic distance (Å)	Clash overlap (Å)
1:A:350:ALA:HA	1:A:413:LEU:HD12	2.01	0.42
1:A:364:LYS:HB3	1:A:410:MET:HE2	2.02	0.42
1:B:241:ASP:OD1	1:B:242:TYR:O	2.38	0.42
1:A:414:ARG:HD3	1:A:418:SER:O	2.20	0.42
1:B:57:MET:HG2	1:B:63:SER:HB2	2.02	0.42
1:A:382:TYR:C	1:A:382:TYR:CD1	2.93	0.42
1:A:237:GLN:HB2	1:A:241:ASP:O	2.20	0.41
1:B:350:ALA:HA	1:B:413:LEU:HD12	2.02	0.41
1:A:306:SER:HB3	1:A:343:ALA:HB3	2.02	0.41
1:A:12:GLY:HA3	1:A:18:SER:O	2.19	0.41
1:A:305:ALA:HA	1:B:309:PRO:HG3	2.03	0.41
1:B:149:TYR:HA	1:B:181:ILE:HD13	2.02	0.41
1:B:27:SER:HB3	1:B:56:ALA:HB3	2.03	0.41
1:B:164:ILE:HG12	1:B:198:LYS:HG2	2.02	0.40
1:A:91:GLU:HB3	1:A:119:MET:HE1	2.04	0.40
1:A:121:ARG:HB2	1:A:164:ILE:HA	2.03	0.40

There are no symmetry-related clashes.

5.3 Torsion angles [i](#)

5.3.1 Protein backbone [i](#)

In the following table, the Percentiles column shows the percent Ramachandran outliers of the chain as a percentile score with respect to all X-ray entries followed by that with respect to entries of similar resolution.

The Analysed column shows the number of residues for which the backbone conformation was analysed, and the total number of residues.

Mol	Chain	Analysed	Favoured	Allowed	Outliers	Percentiles	
1	A	400/433 (92%)	394 (98%)	5 (1%)	1 (0%)	46	26
1	B	403/433 (93%)	397 (98%)	6 (2%)	0	100	100
All	All	803/866 (93%)	791 (98%)	11 (1%)	1 (0%)	56	35

All (1) Ramachandran outliers are listed below:

Mol	Chain	Res	Type
1	A	239	ASP

5.3.2 Protein sidechains ⓘ

In the following table, the Percentiles column shows the percent sidechain outliers of the chain as a percentile score with respect to all X-ray entries followed by that with respect to entries of similar resolution.

The Analysed column shows the number of residues for which the sidechain conformation was analysed, and the total number of residues.

Mol	Chain	Analysed	Rotameric	Outliers	Percentiles	
1	A	339/360 (94%)	333 (98%)	6 (2%)	66	49
1	B	341/360 (95%)	332 (97%)	9 (3%)	54	32
All	All	680/720 (94%)	665 (98%)	15 (2%)	60	39

All (15) residues with a non-rotameric sidechain are listed below:

Mol	Chain	Res	Type
1	A	140	MET
1	A	175	VAL
1	A	242	TYR
1	A	243	HIS
1	A	257	ARG
1	A	355	TYR
1	B	148	LEU
1	B	164	ILE
1	B	242	TYR
1	B	243	HIS
1	B	295	ARG
1	B	355	TYR
1	B	374	ARG
1	B	413	LEU
1	B	416	ARG

Some sidechains can be flipped to improve hydrogen bonding and reduce clashes. There are no such sidechains identified.

5.3.3 RNA ⓘ

There are no RNA molecules in this entry.

5.4 Non-standard residues in protein, DNA, RNA chains ⓘ

There are no non-standard protein/DNA/RNA residues in this entry.

5.5 Carbohydrates

There are no carbohydrates in this entry.

5.6 Ligand geometry

6 ligands are modelled in this entry.

In the following table, the Counts columns list the number of bonds (or angles) for which Mogul statistics could be retrieved, the number of bonds (or angles) that are observed in the model and the number of bonds (or angles) that are defined in the chemical component dictionary. The Link column lists molecule types, if any, to which the group is linked. The Z score for a bond length (or angle) is the number of standard deviations the observed value is removed from the expected value. A bond length (or angle) with $|Z| > 2$ is considered an outlier worth inspection. RMSZ is the root-mean-square of all Z scores of the bond lengths (or angles).

Mol	Type	Chain	Res	Link	Bond lengths			Bond angles		
					Counts	RMSZ	# Z > 2	Counts	RMSZ	# Z > 2
3	ADP	A	501	-	22,29,29	1.02	1 (4%)	27,45,45	2.58	9 (33%)
2	SO4	A	602	-	4,4,4	0.91	0	6,6,6	0.07	0
2	SO4	A	604	-	4,4,4	0.92	0	6,6,6	0.08	0
3	ADP	B	502	-	22,29,29	1.05	1 (4%)	27,45,45	2.54	8 (29%)
2	SO4	B	601	-	4,4,4	0.92	0	6,6,6	0.14	0
2	SO4	B	603	-	4,4,4	0.92	0	6,6,6	0.06	0

In the following table, the Chirals column lists the number of chiral outliers, the number of chiral centers analysed, the number of these observed in the model and the number defined in the chemical component dictionary. Similar counts are reported in the Torsion and Rings columns. '-' means no outliers of that kind were identified.

Mol	Type	Chain	Res	Link	Chirals	Torsions	Rings
3	ADP	A	501	-	-	0/12/32/32	0/3/3/3
2	SO4	A	602	-	-	0/0/0/0	0/0/0/0
2	SO4	A	604	-	-	0/0/0/0	0/0/0/0
3	ADP	B	502	-	-	0/12/32/32	0/3/3/3
2	SO4	B	601	-	-	0/0/0/0	0/0/0/0
2	SO4	B	603	-	-	0/0/0/0	0/0/0/0

All (2) bond length outliers are listed below:

Mol	Chain	Res	Type	Atoms	Z	Observed(Å)	Ideal(Å)
3	A	501	ADP	O4'-C1'	2.36	1.44	1.41
3	B	502	ADP	O4'-C1'	2.56	1.44	1.41

All (17) bond angle outliers are listed below:

Mol	Chain	Res	Type	Atoms	Z	Observed(°)	Ideal(°)
3	B	502	ADP	N3-C2-N1	-9.75	121.43	128.89
3	A	501	ADP	N3-C2-N1	-9.71	121.46	128.89
3	B	502	ADP	PA-O3A-PB	-3.42	121.21	132.67
3	A	501	ADP	PA-O3A-PB	-3.20	121.95	132.67
3	A	501	ADP	C2'-C1'-N9	-2.57	110.37	114.29
3	B	502	ADP	O2B-PB-O3A	-2.43	94.06	105.09
3	A	501	ADP	O2B-PB-O3A	-2.42	94.10	105.09
3	B	502	ADP	C2'-C3'-C4'	-2.34	97.80	102.61
3	B	502	ADP	O3B-PB-O3A	-2.33	94.50	105.09
3	A	501	ADP	O3B-PB-O3A	-2.28	94.73	105.09
3	A	501	ADP	C2'-C3'-C4'	-2.26	97.98	102.61
3	A	501	ADP	C5'-C4'-C3'	-2.21	106.44	115.21
3	B	502	ADP	C2'-C1'-N9	-2.11	111.07	114.29
3	B	502	ADP	O3B-PB-O1B	3.51	121.88	110.58
3	A	501	ADP	O2B-PB-O1B	3.56	122.06	110.58
3	A	501	ADP	O3B-PB-O1B	3.62	122.24	110.58
3	B	502	ADP	O2B-PB-O1B	3.63	122.26	110.58

There are no chirality outliers.

There are no torsion outliers.

There are no ring outliers.

2 monomers are involved in 2 short contacts:

Mol	Chain	Res	Type	Clashes	Symm-Clashes
3	A	501	ADP	1	0
3	B	502	ADP	1	0

5.7 Other polymers [i](#)

There are no such residues in this entry.

5.8 Polymer linkage issues [i](#)

There are no chain breaks in this entry.

6 Fit of model and data

6.1 Protein, DNA and RNA chains

In the following table, the column labelled ‘#RSRZ> 2’ contains the number (and percentage) of RSRZ outliers, followed by percent RSRZ outliers for the chain as percentile scores relative to all X-ray entries and entries of similar resolution. The OWAB column contains the minimum, median, 95th percentile and maximum values of the occupancy-weighted average B-factor per residue. The column labelled ‘Q< 0.9’ lists the number of (and percentage) of residues with an average occupancy less than 0.9.

Mol	Chain	Analysed	<RSRZ>	#RSRZ>2	OWAB(Å ²)	Q<0.9
1	A	406/433 (93%)	0.42	37 (9%) 11 13	13, 24, 55, 75	0
1	B	409/433 (94%)	0.36	31 (7%) 17 19	13, 24, 52, 74	0
All	All	815/866 (94%)	0.39	68 (8%) 14 16	13, 24, 54, 75	0

All (68) RSRZ outliers are listed below:

Mol	Chain	Res	Type	RSRZ
1	A	238	ILE	8.2
1	B	236	TYR	7.0
1	A	239	ASP	6.7
1	B	423	GLN	6.1
1	B	166	SER	6.0
1	B	238	ILE	5.5
1	B	239	ASP	5.3
1	A	186	GLU	4.9
1	A	2	VAL	4.8
1	A	164	ILE	4.6
1	A	185	TRP	4.5
1	A	165	MET	4.3
1	A	143	THR	4.3
1	A	421	HIS	4.3
1	B	422	ASP	4.2
1	B	417	SER	4.1
1	A	422	ASP	4.0
1	A	236	TYR	4.0
1	B	421	HIS	3.6
1	A	36	ILE	3.3
1	A	352	VAL	3.1
1	B	171	GLY	3.1
1	B	240	GLY	3.1
1	A	144	THR	3.1

Continued on next page...

Continued from previous page...

Mol	Chain	Res	Type	RSRZ
1	A	417	SER	3.0
1	A	419	ASP	3.0
1	A	183	LYS	2.9
1	A	150	GLU	2.9
1	B	185	TRP	2.8
1	B	36	ILE	2.8
1	B	143	THR	2.7
1	A	173	TYR	2.7
1	B	314	PHE	2.7
1	B	186	GLU	2.7
1	A	351	LYS	2.7
1	B	183	LYS	2.7
1	B	352	VAL	2.6
1	B	419	ASP	2.6
1	B	241	ASP	2.6
1	A	240	GLY	2.6
1	B	383	VAL	2.5
1	B	318	LEU	2.5
1	A	34	ILE	2.4
1	A	35	ALA	2.4
1	A	120	HIS	2.4
1	A	198	LYS	2.4
1	B	332	ASP	2.4
1	B	45	VAL	2.4
1	A	197	GLU	2.3
1	A	420	TRP	2.3
1	B	138	ARG	2.3
1	B	330	TRP	2.3
1	A	237	GLN	2.3
1	A	59	VAL	2.3
1	B	157	TYR	2.2
1	A	146	ASP	2.2
1	A	142	ALA	2.2
1	A	182	PRO	2.2
1	A	332	ASP	2.2
1	B	173	TYR	2.1
1	A	145	LEU	2.1
1	B	91	GLU	2.1
1	A	199	ILE	2.1
1	B	176	LYS	2.1
1	B	420	TRP	2.1
1	B	34	ILE	2.1

Continued on next page...

Continued from previous page...

Mol	Chain	Res	Type	RSRZ
1	A	157	TYR	2.0
1	A	382	TYR	2.0

6.2 Non-standard residues in protein, DNA, RNA chains [i](#)

There are no non-standard protein/DNA/RNA residues in this entry.

6.3 Carbohydrates [i](#)

There are no carbohydrates in this entry.

6.4 Ligands [i](#)

In the following table, the Atoms column lists the number of modelled atoms in the group and the number defined in the chemical component dictionary. LLDF column lists the quality of electron density of the group with respect to its neighbouring residues in protein, DNA or RNA chains. The B-factors column lists the minimum, median, 95th percentile and maximum values of B factors of atoms in the group. The column labelled 'Q< 0.9' lists the number of atoms with occupancy less than 0.9.

Mol	Type	Chain	Res	Atoms	RSCC	RSR	LLDF	B-factors(Å ²)	Q<0.9
3	ADP	B	502	27/27	0.93	0.11	-0.09	32,47,75,79	0
3	ADP	A	501	27/27	0.94	0.12	-0.15	30,47,69,72	0
2	SO4	A	604	5/5	0.96	0.09	-1.44	49,52,64,67	0
2	SO4	B	601	5/5	0.99	0.07	-1.69	37,39,47,59	0
2	SO4	A	602	5/5	0.99	0.14	-	46,54,58,59	0
2	SO4	B	603	5/5	0.98	0.14	-	44,54,55,59	0

6.5 Other polymers [i](#)

There are no such residues in this entry.