



Full wwPDB X-ray Structure Validation Report ⓘ

Feb 1, 2016 – 03:58 PM GMT

PDB ID : 4E01
Title : Crystal structure of branched-chain alpha-ketoacid dehydrogenase kinase/3,6-dichlorobenzo[b]thiophene-2-carboxylic acid complex with AMPPNP
Authors : Tso, S.C.; Chuang, J.L.; Gui, W.J.; Wynn, R.M.; Li, J.; Chuang, D.T.
Deposited on : 2012-03-02
Resolution : 1.97 Å(reported)

This is a Full wwPDB X-ray Structure Validation Report for a publicly released PDB entry.
We welcome your comments at validation@mail.wwpdb.org
A user guide is available at
<http://wwpdb.org/validation/2016/XrayValidationReportHelp>
with specific help available everywhere you see the ⓘ symbol.

The following versions of software and data (see [references ⓘ](#)) were used in the production of this report:

MolProbity : 4.02b-467
Mogul : 1.7 (RC4), CSD as536be (2015)
Xtriage (Phenix) : 1.9-1692
EDS : rb-20026688
Percentile statistics : 20151230.v01 (using entries in the PDB archive December 30th 2015)
Refmac : 5.8.0135
CCP4 : 6.5.0
Ideal geometry (proteins) : Engh & Huber (2001)
Ideal geometry (DNA, RNA) : Parkinson et al. (1996)
Validation Pipeline (wwPDB-VP) : trunk26865

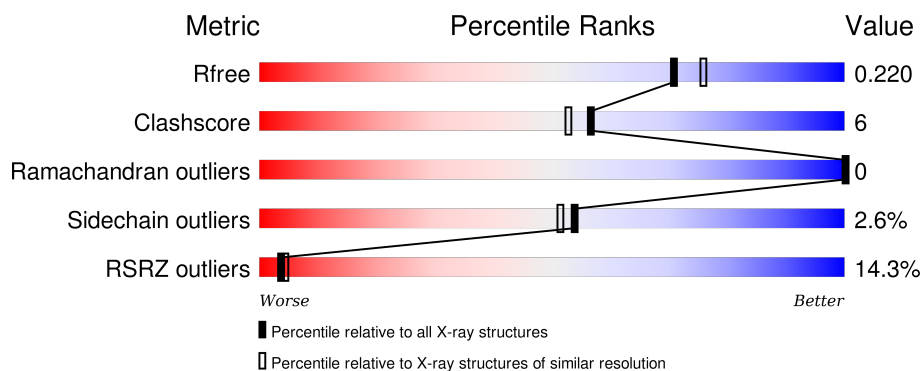
1 Overall quality at a glance

The following experimental techniques were used to determine the structure:

X-RAY DIFFRACTION

The reported resolution of this entry is 1.97 Å.

Percentile scores (ranging between 0-100) for global validation metrics of the entry are shown in the following graphic. The table shows the number of entries on which the scores are based.



Metric	Whole archive (#Entries)	Similar resolution (#Entries, resolution range(Å))
R_{free}	91344	8664 (2.00-1.96)
Clashscore	102246	9905 (2.00-1.96)
Ramachandran outliers	100387	9792 (2.00-1.96)
Sidechain outliers	100360	9791 (2.00-1.96)
RSRZ outliers	91569	8679 (2.00-1.96)

The table below summarises the geometric issues observed across the polymeric chains and their fit to the electron density. The red, orange, yellow and green segments on the lower bar indicate the fraction of residues that contain outliers for ≥ 3 , 2, 1 and 0 types of geometric quality criteria. A grey segment represents the fraction of residues that are not modelled. The numeric value for each fraction is indicated below the corresponding segment, with a dot representing fractions $\leq 5\%$. The upper red bar (where present) indicates the fraction of residues that have poor fit to the electron density. The numeric value is given above the bar.

Mol	Chain	Length	Quality of chain
1	A	418	<div> <div>11%</div> <div>62%</div> <div>12%</div> <div>26%</div> </div>

2 Entry composition [i](#)

There are 6 unique types of molecules in this entry. The entry contains 2651 atoms, of which 0 are hydrogens and 0 are deuteriums.

In the tables below, the ZeroOcc column contains the number of atoms modelled with zero occupancy, the AltConf column contains the number of residues with at least one atom in alternate conformation and the Trace column contains the number of residues modelled with at most 2 atoms.

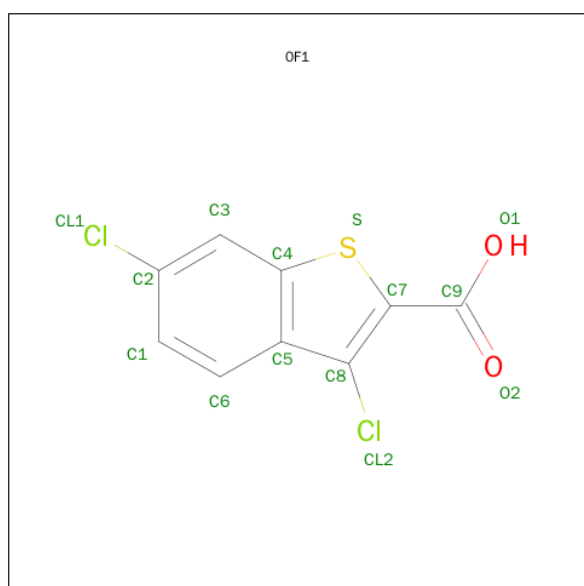
- Molecule 1 is a protein called [3-methyl-2-oxobutanoate dehydrogenase [lipoamide]] kinase, mitochondrial.

Mol	Chain	Residues	Atoms					ZeroOcc	AltConf	Trace
1	A	308	Total	C	N	O	S	0	1	0
			2486	1586	450	439	11			

There are 6 discrepancies between the modelled and reference sequences:

Chain	Residue	Modelled	Actual	Comment	Reference
A	383	HIS	-	EXPRESSION TAG	UNP Q00972
A	384	HIS	-	EXPRESSION TAG	UNP Q00972
A	385	HIS	-	EXPRESSION TAG	UNP Q00972
A	386	HIS	-	EXPRESSION TAG	UNP Q00972
A	387	HIS	-	EXPRESSION TAG	UNP Q00972
A	388	HIS	-	EXPRESSION TAG	UNP Q00972

- Molecule 2 is 3,6-DICHLORO-1-BENZOTHIOPHENE-2-CARBOXYLIC ACID (three-letter code: 0F1) (formula: C₉H₄Cl₂O₂S).



Mol	Chain	Residues	Atoms					ZeroOcc	AltConf
2	A	1	Total	C	Cl	O	S	0	0
			14	9	2	2	1		

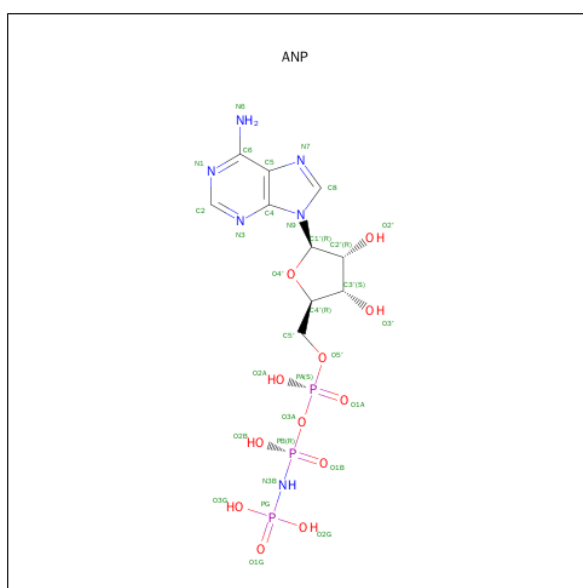
- Molecule 3 is MAGNESIUM ION (three-letter code: MG) (formula: Mg).

Mol	Chain	Residues	Atoms		ZeroOcc	AltConf
3	A	1	Total	Mg	0	0
			1	1		

- Molecule 4 is POTASSIUM ION (three-letter code: K) (formula: K).

Mol	Chain	Residues	Atoms		ZeroOcc	AltConf
4	A	1	Total	K	0	0
			1	1		

- Molecule 5 is PHOSPHOAMINOPHOSPHONIC ACID-ADENYLATE ESTER (three-letter code: ANP) (formula: C₁₀H₁₇N₆O₁₂P₃).



Mol	Chain	Residues	Atoms					ZeroOcc	AltConf
5	A	1	Total	C	N	O	P	0	0
			31	10	6	12	3		

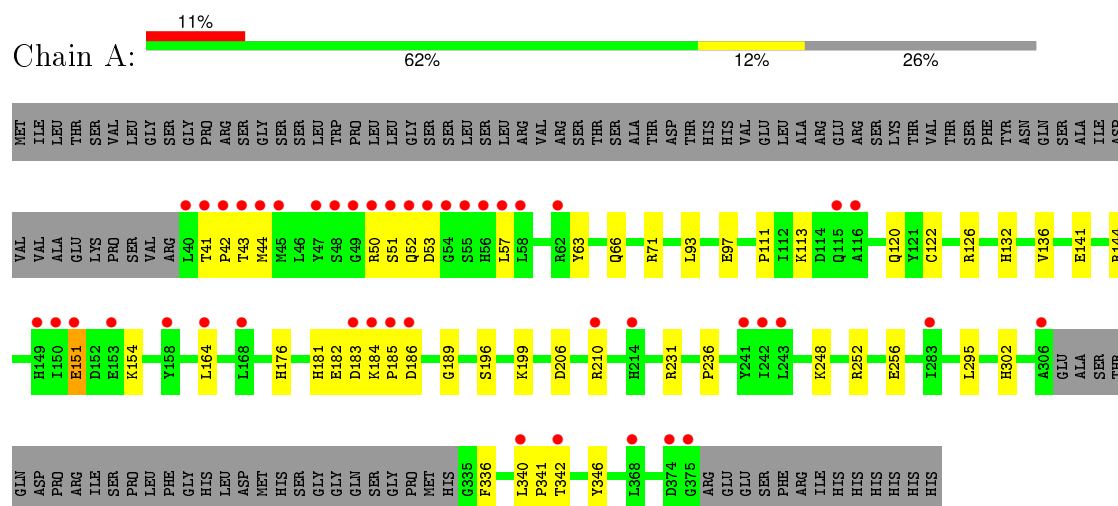
- Molecule 6 is water.

Mol	Chain	Residues	Atoms		ZeroOcc	AltConf
6	A	118	Total	O	0	0
			118	118		

3 Residue-property plots

These plots are drawn for all protein, RNA and DNA chains in the entry. The first graphic for a chain summarises the proportions of errors displayed in the second graphic. The second graphic shows the sequence view annotated by issues in geometry and electron density. Residues are color-coded according to the number of geometric quality criteria for which they contain at least one outlier: green = 0, yellow = 1, orange = 2 and red = 3 or more. A red dot above a residue indicates a poor fit to the electron density ($RSRZ > 2$). Stretches of 2 or more consecutive residues without any outlier are shown as a green connector. Residues present in the sample, but not in the model, are shown in grey.

- Molecule 1: [3-methyl-2-oxobutanoate dehydrogenase [lipoamide]] kinase, mitochondrial



4 Data and refinement statistics

Property	Value	Source
Space group	P 42 21 2	Depositor
Cell constants a, b, c, α , β , γ	127.28Å 127.28Å 73.99Å 90.00° 90.00° 90.00°	Depositor
Resolution (Å)	40.25 – 1.97 40.25 – 1.96	Depositor EDS
% Data completeness (in resolution range)	99.5 (40.25-1.97) 95.8 (40.25-1.96)	Depositor EDS
R_{merge}	0.08	Depositor
R_{sym}	0.07	Depositor
$\langle I/\sigma(I) \rangle$ ¹	2.65 (at 1.97Å)	Xtriage
Refinement program	PHENIX (phenix.refine: 1.7.1_743)	Depositor
R, R_{free}	0.197 , 0.220 0.195 , 0.220	Depositor DCC
R_{free} test set	1982 reflections (4.97%)	DCC
Wilson B-factor (Å ²)	39.3	Xtriage
Anisotropy	0.331	Xtriage
Bulk solvent k_{sol} (e/Å ³), B_{sol} (Å ²)	0.38 , 53.4	EDS
Estimated twinning fraction	No twinning to report.	Xtriage
L-test for twinning ²	$\langle L \rangle = 0.49$, $\langle L^2 \rangle = 0.32$	Xtriage
Outliers	1 of 43745 reflections (0.002%)	Xtriage
F_o, F_c correlation	0.96	EDS
Total number of atoms	2651	wwPDB-VP
Average B, all atoms (Å ²)	50.0	wwPDB-VP

Xtriage's analysis on translational NCS is as follows: *The largest off-origin peak in the Patterson function is 5.17% of the height of the origin peak. No significant pseudotranslation is detected.*

¹Intensities estimated from amplitudes.

²Theoretical values of $\langle |L| \rangle$, $\langle L^2 \rangle$ for acentric reflections are 0.5, 0.375 respectively for untwinned datasets, and 0.333, 0.2 for perfectly twinned datasets.

5 Model quality [i](#)

5.1 Standard geometry [i](#)

Bond lengths and bond angles in the following residue types are not validated in this section: 0F1, K, ANP, MG

The Z score for a bond length (or angle) is the number of standard deviations the observed value is removed from the expected value. A bond length (or angle) with $|Z| > 5$ is considered an outlier worth inspection. RMSZ is the root-mean-square of all Z scores of the bond lengths (or angles).

Mol	Chain	Bond lengths		Bond angles	
		RMSZ	# $ Z > 5$	RMSZ	# $ Z > 5$
1	A	0.32	0/2544	0.48	0/3439

There are no bond length outliers.

There are no bond angle outliers.

There are no chirality outliers.

There are no planarity outliers.

5.2 Too-close contacts [i](#)

In the following table, the Non-H and H(model) columns list the number of non-hydrogen atoms and hydrogen atoms in the chain respectively. The H(added) column lists the number of hydrogen atoms added and optimized by MolProbity. The Clashes column lists the number of clashes within the asymmetric unit, whereas Symm-Clashes lists symmetry related clashes.

Mol	Chain	Non-H	H(model)	H(added)	Clashes	Symm-Clashes
1	A	2486	0	2524	31	0
2	A	14	0	3	1	0
3	A	1	0	0	0	0
4	A	1	0	0	0	0
5	A	31	0	13	0	0
6	A	118	0	0	2	0
All	All	2651	0	2540	31	0

The all-atom clashscore is defined as the number of clashes found per 1000 atoms (including hydrogen atoms). The all-atom clashscore for this structure is 6.

All (31) close contacts within the same asymmetric unit are listed below, sorted by their clash magnitude.

Atom-1	Atom-2	Interatomic distance (Å)	Clash overlap (Å)
1:A:41:THR:HB	1:A:42:PRO:HD2	1.44	0.99
1:A:44:MET:HB2	1:A:71:ARG:HH22	1.27	0.96
1:A:151:GLU:OE1	1:A:151:GLU:N	2.19	0.65
1:A:44:MET:SD	1:A:71:ARG:NH1	2.75	0.60
1:A:236:PRO:HD2	6:A:536:HOH:O	2.01	0.60
1:A:342:THR:HG22	1:A:346:TYR:CE1	2.37	0.59
1:A:50:ARG:NH1	1:A:50:ARG:HB3	2.17	0.58
1:A:111:PRO:O	1:A:113:LYS:HD3	2.04	0.57
1:A:93:LEU:O	1:A:97:GLU:HG3	2.05	0.57
1:A:52:GLN:HG2	1:A:53:ASP:N	2.24	0.52
1:A:199:LYS:HE2	1:A:231:ARG:HH22	1.73	0.52
1:A:151:GLU:H	1:A:151:GLU:CD	2.12	0.51
1:A:44:MET:HB2	1:A:71:ARG:NH2	2.10	0.51
1:A:302:HIS:HA	1:A:336:PHE:O	2.11	0.51
1:A:206:ASP:HB3	1:A:210:ARG:NH1	2.26	0.51
1:A:252:ARG:HD2	1:A:256:GLU:HG3	1.94	0.49
1:A:41:THR:HB	1:A:42:PRO:CD	2.25	0.49
1:A:185:PRO:O	1:A:186:ASP:HB2	2.14	0.47
1:A:50:ARG:HH11	1:A:50:ARG:HB3	1.77	0.47
1:A:63:TYR:O	1:A:66:GLN:HG2	2.15	0.46
1:A:182:GLU:OE1	1:A:184:LYS:HE2	2.15	0.46
1:A:248:LYS:NZ	6:A:539:HOH:O	2.49	0.45
1:A:342:THR:CG2	1:A:346:TYR:CE1	3.02	0.43
1:A:122:CYS:HB3	1:A:126[B]:ARG:HH21	1.82	0.43
1:A:136:VAL:HG22	1:A:164:LEU:HD22	2.01	0.43
1:A:196:SER:OG	1:A:199:LYS:HG3	2.19	0.42
1:A:132:HIS:HB3	2:A:401:OF1:C9	2.50	0.41
1:A:340:LEU:N	1:A:341:PRO:HD2	2.36	0.41
1:A:141:GLU:OE2	1:A:144:ARG:NH1	2.53	0.41
1:A:57:LEU:HD13	1:A:181:HIS:CE1	2.56	0.40
1:A:176:HIS:CE1	1:A:189:GLY:HA3	2.57	0.40

There are no symmetry-related clashes.

5.3 Torsion angles ⓘ

5.3.1 Protein backbone ⓘ

In the following table, the Percentiles column shows the percent Ramachandran outliers of the chain as a percentile score with respect to all X-ray entries followed by that with respect to entries of similar resolution.

The Analysed column shows the number of residues for which the backbone conformation was analysed, and the total number of residues.

Mol	Chain	Analysed	Favoured	Allowed	Outliers	Percentiles	
1	A	305/418 (73%)	297 (97%)	8 (3%)	0	100	100

There are no Ramachandran outliers to report.

5.3.2 Protein sidechains ⓘ

In the following table, the Percentiles column shows the percent sidechain outliers of the chain as a percentile score with respect to all X-ray entries followed by that with respect to entries of similar resolution.

The Analysed column shows the number of residues for which the sidechain conformation was analysed, and the total number of residues.

Mol	Chain	Analysed	Rotameric	Outliers	Percentiles	
1	A	270/366 (74%)	263 (97%)	7 (3%)	54	51

All (7) residues with a non-rotameric sidechain are listed below:

Mol	Chain	Res	Type
1	A	43	THR
1	A	51	SER
1	A	120	GLN
1	A	151	GLU
1	A	154	LYS
1	A	183	ASP
1	A	295	LEU

Some sidechains can be flipped to improve hydrogen bonding and reduce clashes. There are no such sidechains identified.

5.3.3 RNA ⓘ

There are no RNA molecules in this entry.

5.4 Non-standard residues in protein, DNA, RNA chains ⓘ

There are no non-standard protein/DNA/RNA residues in this entry.

5.5 Carbohydrates

There are no carbohydrates in this entry.

5.6 Ligand geometry

Of 4 ligands modelled in this entry, 2 are monoatomic - leaving 2 for Mogul analysis.

In the following table, the Counts columns list the number of bonds (or angles) for which Mogul statistics could be retrieved, the number of bonds (or angles) that are observed in the model and the number of bonds (or angles) that are defined in the chemical component dictionary. The Link column lists molecule types, if any, to which the group is linked. The Z score for a bond length (or angle) is the number of standard deviations the observed value is removed from the expected value. A bond length (or angle) with $|Z| > 2$ is considered an outlier worth inspection. RMSZ is the root-mean-square of all Z scores of the bond lengths (or angles).

Mol	Type	Chain	Res	Link	Bond lengths			Bond angles		
					Counts	RMSZ	$\# Z > 2$	Counts	RMSZ	$\# Z > 2$
2	0F1	A	401	-	7,15,15	1.57	1 (14%)	7,22,22	2.00	2 (28%)
5	ANP	A	404	3,4	27,33,33	2.93	6 (22%)	30,52,52	3.00	8 (26%)

In the following table, the Chirals column lists the number of chiral outliers, the number of chiral centers analysed, the number of these observed in the model and the number defined in the chemical component dictionary. Similar counts are reported in the Torsion and Rings columns. '-' means no outliers of that kind were identified.

Mol	Type	Chain	Res	Link	Chirals	Torsions	Rings
2	0F1	A	401	-	-	0/0/4/4	0/2/2/2
5	ANP	A	404	3,4	-	0/12/38/38	0/3/3/3

All (7) bond length outliers are listed below:

Mol	Chain	Res	Type	Atoms	Z	Observed(Å)	Ideal(Å)
5	A	404	ANP	PG-O2G	-6.27	1.39	1.56
5	A	404	ANP	C2'-C3'	-3.28	1.44	1.53
5	A	404	ANP	PG-N3B	2.10	1.68	1.63
2	A	401	0F1	C8-CL2	2.54	1.83	1.73
5	A	404	ANP	C6-N6	3.38	1.45	1.34
5	A	404	ANP	PB-O1B	7.20	1.54	1.46
5	A	404	ANP	PG-O1G	9.74	1.57	1.46

All (10) bond angle outliers are listed below:

Mol	Chain	Res	Type	Atoms	Z	Observed(°)	Ideal(°)
5	A	404	ANP	N3-C2-N1	-9.85	121.35	128.89
5	A	404	ANP	C1'-N9-C4	-6.18	117.62	126.94
5	A	404	ANP	O4'-C1'-N9	-5.28	97.05	108.10
5	A	404	ANP	C4'-O4'-C1'	-3.52	105.85	109.72
2	A	401	0F1	C6-C5-C8	-3.25	128.18	135.20
2	A	401	0F1	C1-C6-C5	-3.01	117.18	121.13
5	A	404	ANP	O2B-PB-O1B	-2.14	105.53	110.00
5	A	404	ANP	O3A-PA-O5'	2.38	109.26	102.94
5	A	404	ANP	O2A-PA-O3A	2.43	116.11	105.09
5	A	404	ANP	C2'-C1'-N9	6.91	124.85	114.29

There are no chirality outliers.

There are no torsion outliers.

There are no ring outliers.

1 monomer is involved in 1 short contact:

Mol	Chain	Res	Type	Clashes	Symm-Clashes
2	A	401	0F1	1	0

5.7 Other polymers [i](#)

There are no such residues in this entry.

5.8 Polymer linkage issues [i](#)

There are no chain breaks in this entry.

6 Fit of model and data ⓘ

6.1 Protein, DNA and RNA chains ⓘ

In the following table, the column labelled ‘#RSRZ> 2’ contains the number (and percentage) of RSRZ outliers, followed by percent RSRZ outliers for the chain as percentile scores relative to all X-ray entries and entries of similar resolution. The OWAB column contains the minimum, median, 95th percentile and maximum values of the occupancy-weighted average B-factor per residue. The column labelled ‘Q< 0.9’ lists the number of (and percentage) of residues with an average occupancy less than 0.9.

Mol	Chain	Analysed	<RSRZ>	#RSRZ>2	OWAB(Å ²)	Q<0.9
1	A	308/418 (73%)	0.84	44 (14%) 4 4	28, 45, 89, 122	0

All (44) RSRZ outliers are listed below:

Mol	Chain	Res	Type	RSRZ
1	A	52	GLN	10.0
1	A	375	GLY	7.8
1	A	51	SER	6.2
1	A	374	ASP	6.2
1	A	47	TYR	6.1
1	A	50	ARG	5.5
1	A	151	GLU	5.5
1	A	43	THR	5.0
1	A	153	GLU	4.9
1	A	53	ASP	4.6
1	A	42	PRO	4.5
1	A	185	PRO	4.2
1	A	183	ASP	3.9
1	A	49	GLY	3.9
1	A	115	GLN	3.6
1	A	45	MET	3.6
1	A	41	THR	3.4
1	A	149	HIS	3.3
1	A	150	ILE	3.3
1	A	168	LEU	3.2
1	A	158	TYR	3.1
1	A	214	HIS	3.0
1	A	306	ALA	3.0
1	A	40	LEU	2.9
1	A	58	LEU	2.9
1	A	164	LEU	2.9
1	A	55	SER	2.9

Continued on next page...

Continued from previous page...

Mol	Chain	Res	Type	RSRZ
1	A	116	ALA	2.8
1	A	283	ILE	2.7
1	A	242	ILE	2.6
1	A	48	SER	2.6
1	A	241	TYR	2.6
1	A	340	LEU	2.5
1	A	56	HIS	2.5
1	A	243	LEU	2.4
1	A	186	ASP	2.2
1	A	44	MET	2.2
1	A	210	ARG	2.1
1	A	368	LEU	2.1
1	A	184	LYS	2.1
1	A	342	THR	2.1
1	A	54	GLY	2.1
1	A	62	ARG	2.0
1	A	57	LEU	2.0

6.2 Non-standard residues in protein, DNA, RNA chains [i](#)

There are no non-standard protein/DNA/RNA residues in this entry.

6.3 Carbohydrates [i](#)

There are no carbohydrates in this entry.

6.4 Ligands [i](#)

In the following table, the Atoms column lists the number of modelled atoms in the group and the number defined in the chemical component dictionary. LLDF column lists the quality of electron density of the group with respect to its neighbouring residues in protein, DNA or RNA chains. The B-factors column lists the minimum, median, 95th percentile and maximum values of B factors of atoms in the group. The column labelled 'Q< 0.9' lists the number of atoms with occupancy less than 0.9.

Mol	Type	Chain	Res	Atoms	RSCC	RSR	LLDF	B-factors(Å ²)	Q<0.9
2	0F1	A	401	14/14	0.96	0.18	0.71	31,36,41,42	14
4	K	A	403	1/1	1.00	0.14	0.13	36,36,36,36	0
5	ANP	A	404	31/31	0.98	0.11	-0.79	28,34,39,39	0
3	MG	A	402	1/1	0.96	0.22	-	41,41,41,41	0

6.5 Other polymers [i](#)

There are no such residues in this entry.