



Full wwPDB X-ray Structure Validation Report ⓘ

Feb 1, 2016 – 04:00 PM GMT

PDB ID : 4E3T
Title : Round 18 Arylesterase Variant of Phosphotriesterase with Bound Transition State Analog
Authors : Tokuriki, N.; Jackson, C.J.; Tawfik, D.S.
Deposited on : 2012-03-10
Resolution : 1.65 Å(reported)

This is a Full wwPDB X-ray Structure Validation Report for a publicly released PDB entry.
We welcome your comments at validation@mail.wwpdb.org
A user guide is available at
<http://wwpdb.org/validation/2016/XrayValidationReportHelp>
with specific help available everywhere you see the ⓘ symbol.

The following versions of software and data (see [references ⓘ](#)) were used in the production of this report:

MolProbity : 4.02b-467
Mogul : 1.7 (RC4), CSD as536be (2015)
Xtriage (Phenix) : 1.9-1692
EDS : rb-20026688
Percentile statistics : 20151230.v01 (using entries in the PDB archive December 30th 2015)
Refmac : 5.8.0135
CCP4 : 6.5.0
Ideal geometry (proteins) : Engh & Huber (2001)
Ideal geometry (DNA, RNA) : Parkinson et al. (1996)
Validation Pipeline (wwPDB-VP) : trunk26865

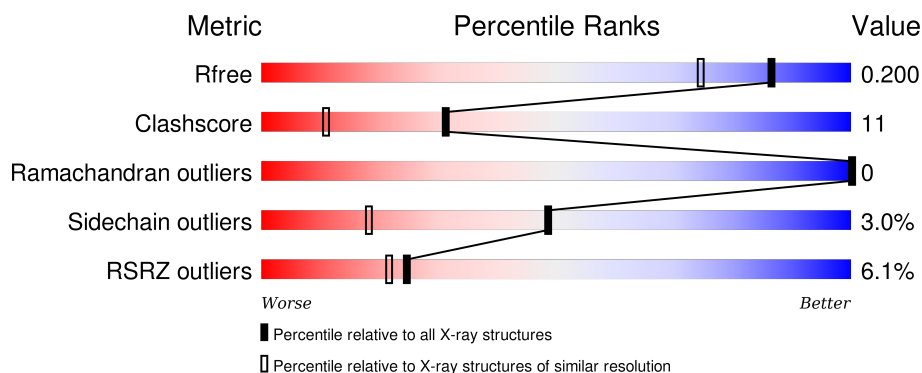
1 Overall quality at a glance

The following experimental techniques were used to determine the structure:

X-RAY DIFFRACTION

The reported resolution of this entry is 1.65 Å.

Percentile scores (ranging between 0-100) for global validation metrics of the entry are shown in the following graphic. The table shows the number of entries on which the scores are based.



Metric	Whole archive (#Entries)	Similar resolution (#Entries, resolution range(Å))
R_{free}	91344	1226 (1.66-1.66)
Clashscore	102246	1323 (1.66-1.66)
Ramachandran outliers	100387	1295 (1.66-1.66)
Sidechain outliers	100360	1295 (1.66-1.66)
RSRZ outliers	91569	1227 (1.66-1.66)

The table below summarises the geometric issues observed across the polymeric chains and their fit to the electron density. The red, orange, yellow and green segments on the lower bar indicate the fraction of residues that contain outliers for ≥ 3 , 2, 1 and 0 types of geometric quality criteria. A grey segment represents the fraction of residues that are not modelled. The numeric value for each fraction is indicated below the corresponding segment, with a dot representing fractions $\leq 5\%$. The upper red bar (where present) indicates the fraction of residues that have poor fit to the electron density. The numeric value is given above the bar.

Mol	Chain	Length	Quality of chain
1	A	333	
1	B	333	

The following table lists non-polymeric compounds, carbohydrate monomers and non-standard residues in protein, DNA, RNA chains that are outliers for geometric or electron-density-fit criteria:

Mol	Type	Chain	Res	Chirality	Geometry	Clashes	Electron density
3	HLN	B	404[B]	-	-	-	X

2 Entry composition [i](#)

There are 4 unique types of molecules in this entry. The entry contains 5894 atoms, of which 0 are hydrogens and 0 are deuteriums.

In the tables below, the ZeroOcc column contains the number of atoms modelled with zero occupancy, the AltConf column contains the number of residues with at least one atom in alternate conformation and the Trace column contains the number of residues modelled with at most 2 atoms.

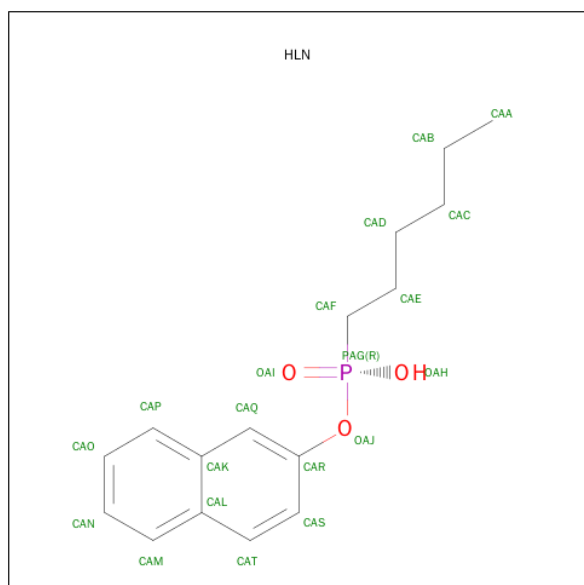
- Molecule 1 is a protein called Phosphotriesterase.

Mol	Chain	Residues	Atoms					ZeroOcc	AltConf	Trace
1	A	327	Total	C	N	O	S	20	44	0
			2785	1761	492	522	10			
1	B	326	Total	C	N	O	S	0	25	0
			2633	1663	467	494	9			

- Molecule 2 is ZINC ION (three-letter code: ZN) (formula: Zn).

Mol	Chain	Residues	Atoms		ZeroOcc	AltConf
2	B	3	Total	Zn	0	3
			3	3		
2	A	3	Total	Zn	0	3
			3	3		

- Molecule 3 is HEXYL(NAPHTHALEN-2-YLOXY)PHOSPHINIC ACID (three-letter code: HLN) (formula: C₁₆H₂₁O₃P).



Mol	Chain	Residues	Atoms				ZeroOcc	AltConf
3	B	1	Total	C	O	P	0	1
			20	16	3	1		

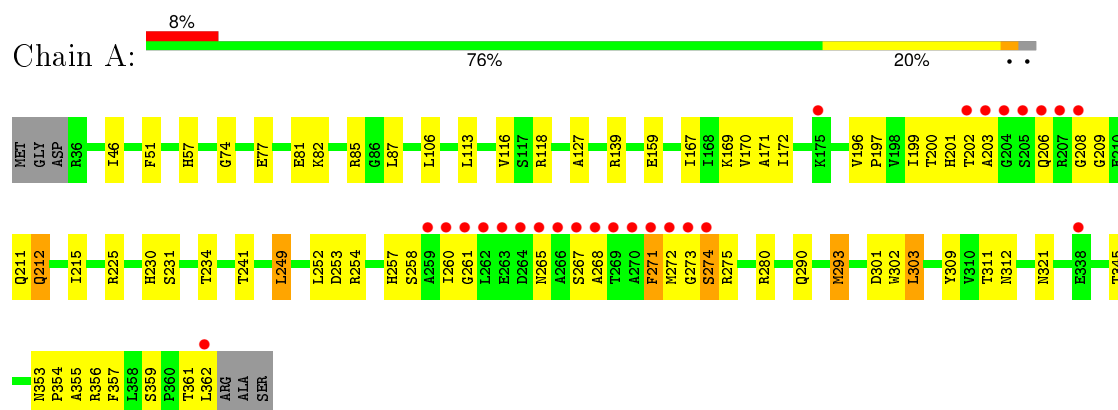
- Molecule 4 is water.

Mol	Chain	Residues	Atoms		ZeroOcc	AltConf
4	A	228	Total	O	0	1
			228	228		
4	B	222	Total	O	0	1
			222	222		

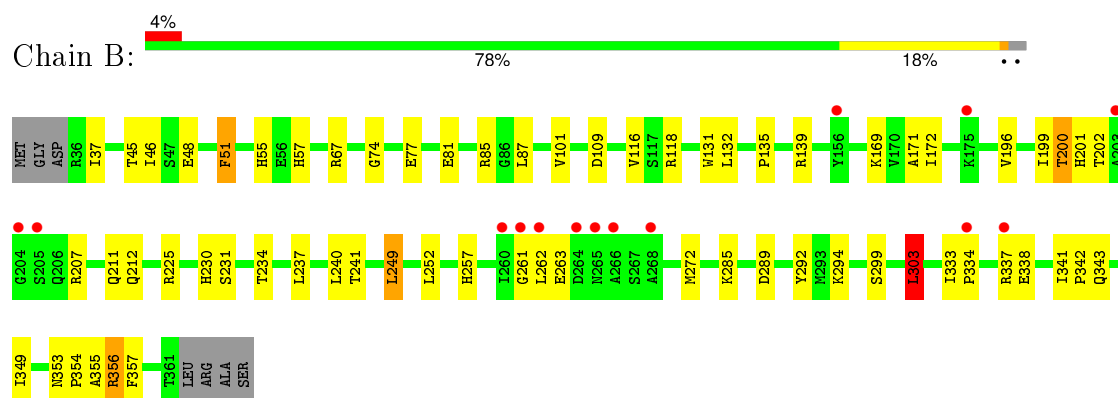
3 Residue-property plots

These plots are drawn for all protein, RNA and DNA chains in the entry. The first graphic for a chain summarises the proportions of errors displayed in the second graphic. The second graphic shows the sequence view annotated by issues in geometry and electron density. Residues are color-coded according to the number of geometric quality criteria for which they contain at least one outlier: green = 0, yellow = 1, orange = 2 and red = 3 or more. A red dot above a residue indicates a poor fit to the electron density ($RSRZ > 2$). Stretches of 2 or more consecutive residues without any outlier are shown as a green connector. Residues present in the sample, but not in the model, are shown in grey.

• Molecule 1: Phosphotriesterase



• Molecule 1: Phosphotriesterase



4 Data and refinement statistics

Property	Value	Source
Space group	P 21 21 2	Depositor
Cell constants a, b, c, α , β , γ	85.77Å 85.97Å 88.73Å 90.00° 90.00° 90.00°	Depositor
Resolution (Å)	29.58 – 1.65 29.58 – 1.65	Depositor EDS
% Data completeness (in resolution range)	99.8 (29.58-1.65) 94.7 (29.58-1.65)	Depositor EDS
R_{merge}	(Not available)	Depositor
R_{sym}	(Not available)	Depositor
$\langle I/\sigma(I) \rangle$ ¹	2.85 (at 1.65Å)	Xtriage
Refinement program	PHENIX (phenix.refine: 1.7.1_743)	Depositor
R, R_{free}	0.173 , 0.205 0.169 , 0.200	Depositor DCC
R_{free} test set	3989 reflections (5.58%)	DCC
Wilson B-factor (Å ²)	17.6	Xtriage
Anisotropy	0.538	Xtriage
Bulk solvent k_{sol} (e/Å ³), B_{sol} (Å ²)	0.35 , 52.0	EDS
Estimated twinning fraction	0.015 for -h,l,k 0.016 for -l,-k,-h 0.021 for k,h,-l 0.008 for k,l,h 0.008 for l,h,k	Xtriage
L-test for twinning ²	$\langle L \rangle = 0.48$, $\langle L^2 \rangle = 0.31$	Xtriage
Outliers	0 of 79333 reflections	Xtriage
F_o, F_c correlation	0.97	EDS
Total number of atoms	5894	wwPDB-VP
Average B, all atoms (Å ²)	26.0	wwPDB-VP

Xtriage's analysis on translational NCS is as follows: *The largest off-origin peak in the Patterson function is 4.26% of the height of the origin peak. No significant pseudotranslation is detected.*

¹ Intensities estimated from amplitudes.

² Theoretical values of $\langle |L| \rangle$, $\langle L^2 \rangle$ for acentric reflections are 0.5, 0.375 respectively for untwinned datasets, and 0.333, 0.2 for perfectly twinned datasets.

5 Model quality

5.1 Standard geometry

Bond lengths and bond angles in the following residue types are not validated in this section: HLN, ZN

The Z score for a bond length (or angle) is the number of standard deviations the observed value is removed from the expected value. A bond length (or angle) with $|Z| > 5$ is considered an outlier worth inspection. RMSZ is the root-mean-square of all Z scores of the bond lengths (or angles).

Mol	Chain	Bond lengths		Bond angles	
		RMSZ	$\# Z > 5$	RMSZ	$\# Z > 5$
1	A	0.96	0/2909	0.97	7/3947 (0.2%)
1	B	0.94	1/2738 (0.0%)	0.96	7/3715 (0.2%)
All	All	0.95	1/5647 (0.0%)	0.96	14/7662 (0.2%)

Chiral center outliers are detected by calculating the chiral volume of a chiral center and verifying if the center is modelled as a planar moiety or with the opposite hand. A planarity outlier is detected by checking planarity of atoms in a peptide group, atoms in a mainchain group or atoms of a sidechain that are expected to be planar.

Mol	Chain	#Chirality outliers	#Planarity outliers
1	A	0	1
1	B	0	2
All	All	0	3

All (1) bond length outliers are listed below:

Mol	Chain	Res	Type	Atoms	Z	Observed(Å)	Ideal(Å)
1	B	77	GLU	CG-CD	5.88	1.60	1.51

All (14) bond angle outliers are listed below:

Mol	Chain	Res	Type	Atoms	Z	Observed(°)	Ideal(°)
1	B	118	ARG	NE-CZ-NH1	8.42	124.51	120.30
1	B	249	LEU	CA-CB-CG	-7.11	98.95	115.30
1	A	225	ARG	NE-CZ-NH2	-6.50	117.05	120.30
1	B	225	ARG	NE-CZ-NH1	6.37	123.48	120.30
1	A	249[A]	LEU	CA-CB-CG	-6.12	101.22	115.30
1	A	249[B]	LEU	CA-CB-CG	-6.12	101.22	115.30
1	A	139	ARG	NE-CZ-NH1	5.87	123.24	120.30
1	B	356	ARG	NE-CZ-NH2	-5.73	117.43	120.30

Continued on next page...

Continued from previous page...

Mol	Chain	Res	Type	Atoms	Z	Observed(°)	Ideal(°)
1	B	303	LEU	CB-CG-CD1	-5.70	101.31	111.00
1	A	113	LEU	CB-CG-CD1	5.35	120.10	111.00
1	A	252	LEU	N-CA-C	-5.22	96.91	111.00
1	B	252	LEU	N-CA-C	-5.08	97.28	111.00
1	A	225	ARG	NE-CZ-NH1	5.08	122.84	120.30
1	B	139	ARG	NE-CZ-NH1	5.02	122.81	120.30

There are no chirality outliers.

All (3) planarity outliers are listed below:

Mol	Chain	Res	Type	Group
1	A	74	GLY	Mainchain
1	B	200[A]	THR	Peptide
1	B	74	GLY	Mainchain

5.2 Too-close contacts ⓘ

In the following table, the Non-H and H(model) columns list the number of non-hydrogen atoms and hydrogen atoms in the chain respectively. The H(added) column lists the number of hydrogen atoms added and optimized by MolProbity. The Clashes column lists the number of clashes within the asymmetric unit, whereas Symm-Clashes lists symmetry related clashes.

Mol	Chain	Non-H	H(model)	H(added)	Clashes	Symm-Clashes
1	A	2785	0	2792	67	0
1	B	2633	0	2637	52	0
2	A	3	0	0	0	0
2	B	3	0	0	0	0
3	B	20	0	20	2	0
4	A	228	0	0	12	0
4	B	222	0	0	6	0
All	All	5894	0	5449	118	0

The all-atom clashscore is defined as the number of clashes found per 1000 atoms (including hydrogen atoms). The all-atom clashscore for this structure is 11.

All (118) close contacts within the same asymmetric unit are listed below, sorted by their clash magnitude.

Atom-1	Atom-2	Interatomic distance (Å)	Clash overlap (Å)
1:A:201[B]:HIS:NE2	1:A:203:ALA:HB2	1.77	0.98

Continued on next page...

Continued from previous page...

Atom-1	Atom-2	Interatomic distance (Å)	Clash overlap (Å)
1:A:202[B]:THR:HG21	4:A:725:HOH:O	1.70	0.91
1:B:201[A]:HIS:CD2	1:B:230[A]:HIS:HD2	1.88	0.91
1:B:230[B]:HIS:CE1	3:B:404[B]:HLN:H15	2.12	0.84
1:A:87:LEU:HD12	1:A:116[B]:VAL:HG12	1.59	0.83
1:B:201[A]:HIS:CD2	1:B:230[A]:HIS:CD2	2.69	0.80
1:A:118:ARG:HG3	1:A:118:ARG:HH11	1.47	0.79
1:B:207:ARG:O	4:B:611:HOH:O	2.02	0.78
1:B:201[A]:HIS:HD2	1:B:230[A]:HIS:HD2	1.30	0.76
1:A:293[A]:MET:HG3	1:A:345:THR:HG23	1.68	0.74
1:A:81:GLU:OE2	1:A:85:ARG:NE	2.20	0.74
1:A:362:LEU:HA	4:A:625:HOH:O	1.87	0.73
1:A:87:LEU:HD12	1:A:116[B]:VAL:CG1	2.20	0.71
1:A:81:GLU:CD	1:A:85:ARG:HE	1.97	0.69
1:A:199:ILE:HD11	4:A:719:HOH:O	1.93	0.68
1:A:311:THR:O	1:A:312[B]:ASN:HB3	1.93	0.68
1:A:311:THR:O	1:A:312[B]:ASN:CB	2.42	0.67
1:A:231:SER:O	1:A:234[B]:THR:HG23	1.94	0.67
1:A:361[B]:THR:HG21	4:A:572:HOH:O	1.95	0.65
1:A:169[A]:LYS:NZ	4:A:706:HOH:O	2.08	0.65
1:A:260:ILE:HG23	1:A:273:GLY:O	1.95	0.65
1:A:201[B]:HIS:CD2	1:A:203:ALA:HB2	2.32	0.65
1:B:109[B]:ASP:OD1	4:B:619:HOH:O	2.11	0.65
1:A:169[B]:LYS:HZ1	1:A:201[B]:HIS:HB2	1.62	0.65
1:B:199:ILE:HD11	4:B:718:HOH:O	1.97	0.65
1:A:171:ALA:CB	1:A:201[B]:HIS:HB3	2.28	0.63
1:A:118:ARG:HH11	1:A:118:ARG:CG	2.10	0.63
1:A:254:ARG:NH1	1:A:301[A]:ASP:OD2	2.32	0.61
1:B:46:ILE:HG23	1:B:355:ALA:HB1	1.84	0.59
1:B:337:ARG:HD2	1:B:343[A]:GLN:OE1	2.04	0.58
1:B:200[B]:THR:HG23	1:B:212:GLN:HE22	1.69	0.57
1:A:257:HIS:O	1:A:272[A]:MET:HB3	2.03	0.57
1:A:257:HIS:O	1:A:272[B]:MET:HB3	2.05	0.56
1:A:82[B]:LYS:HE2	4:A:653:HOH:O	2.05	0.56
1:B:67:ARG:NH2	4:B:630:HOH:O	2.39	0.56
1:B:230[B]:HIS:ND1	3:B:404[B]:HLN:H16	2.21	0.55
1:A:249[B]:LEU:HD22	1:A:357:PHE:CD1	2.41	0.55
1:A:234[B]:THR:HG22	4:A:721:HOH:O	2.07	0.54
1:A:57[B]:HIS:HB2	1:A:303:LEU:HB3	1.89	0.54
1:B:101:VAL:HB	1:B:169[B]:LYS:HD3	1.88	0.54
1:B:172:ILE:HG13	1:B:202:THR:HG23	1.89	0.53
1:A:241[B]:THR:OG1	1:A:290:GLN:OE1	2.15	0.53

Continued on next page...

Continued from previous page...

Atom-1	Atom-2	Interatomic distance (Å)	Clash overlap (Å)
1:B:51:PHE:HD2	1:B:51:PHE:C	2.12	0.53
1:B:51:PHE:CD2	1:B:51:PHE:C	2.81	0.53
1:A:170:VAL:CG2	1:A:200[B]:THR:HG22	2.39	0.53
4:A:586:HOH:O	1:B:135:PRO:HG3	2.08	0.53
1:A:171:ALA:HB2	1:A:201[B]:HIS:HB3	1.89	0.53
1:A:209:GLY:HA2	1:A:212[A]:GLN:NE2	2.24	0.52
1:A:46:ILE:HD11	1:A:359[B]:SER:HB2	1.92	0.52
1:A:258:SER:OG	1:A:280:ARG:HD2	2.10	0.52
1:A:267:SER:HA	1:A:309:TYR:OH	2.10	0.52
1:A:172:ILE:HG12	1:A:212[B]:GLN:HE21	1.74	0.52
1:B:257:HIS:ND1	1:B:272[A]:MET:HG2	2.24	0.52
1:A:159:GLU:HG2	1:B:67:ARG:HG2	1.90	0.52
1:B:87:LEU:HD12	1:B:116:VAL:CG1	2.40	0.52
1:B:237:LEU:O	1:B:241[B]:THR:HG23	2.10	0.51
1:A:211[A]:GLN:O	1:A:215[A]:ILE:HG12	2.10	0.51
1:A:172:ILE:HG12	1:A:212[B]:GLN:NE2	2.26	0.51
1:B:87:LEU:HD12	1:B:116:VAL:HG12	1.92	0.51
1:A:118:ARG:CG	1:A:118:ARG:NH1	2.69	0.51
1:A:172:ILE:HD11	1:A:202[A]:THR:OG1	2.11	0.50
1:B:261:GLY:H	1:B:263:GLU:CD	2.15	0.50
1:B:241[A]:THR:HG23	1:B:292:TYR:CE2	2.46	0.50
1:B:353:ASN:HB2	1:B:354:PRO:HD3	1.94	0.50
1:A:169[B]:LYS:NZ	1:A:201[B]:HIS:HB2	2.26	0.49
1:B:285:LYS:NZ	1:B:289:ASP:OD2	2.46	0.49
1:A:199:ILE:CD1	4:A:719:HOH:O	2.56	0.48
1:B:199:ILE:HD12	1:B:200[A]:THR:H	1.79	0.48
1:B:333:ILE:N	1:B:334:PRO:HD2	2.28	0.48
1:A:265:ASN:HB3	1:A:268:ALA:HB3	1.96	0.48
1:A:167[B]:ILE:HA	1:A:196[B]:VAL:CG1	2.44	0.47
1:A:253:ASP:OD2	4:A:719:HOH:O	2.20	0.47
1:A:199:ILE:HD12	1:A:200[B]:THR:H	1.78	0.47
1:B:294:LYS:O	1:B:356:ARG:NH2	2.47	0.47
1:B:81[A]:GLU:HG3	4:B:615:HOH:O	2.14	0.47
1:A:353:ASN:HB2	1:A:354:PRO:HD3	1.97	0.46
1:A:196[B]:VAL:HG13	1:A:197:PRO:HD2	1.96	0.46
1:A:260:ILE:C	1:A:260:ILE:HD12	2.36	0.46
1:B:356:ARG:NH1	4:B:682:HOH:O	2.41	0.46
1:B:171:ALA:HB1	1:B:201[A]:HIS:CE1	2.51	0.45
1:A:167[B]:ILE:HA	1:A:196[B]:VAL:HG13	1.97	0.45
1:A:77[B]:GLU:HG3	4:A:601:HOH:O	2.16	0.45
1:A:271:PHE:C	1:A:271:PHE:HD2	2.20	0.45

Continued on next page...

Continued from previous page...

Atom-1	Atom-2	Interatomic distance (Å)	Clash overlap (Å)
1:B:45:THR:OG1	1:B:48:GLU:HG3	2.17	0.44
1:B:200[B]:THR:CG2	1:B:212:GLN:NE2	2.80	0.44
1:A:260:ILE:HB	1:A:261:GLY:H	1.61	0.44
1:B:341:ILE:HA	1:B:342:PRO:HD3	1.80	0.44
1:B:249:LEU:HD13	1:B:357:PHE:CD1	2.52	0.44
1:A:302:TRP:CH2	1:A:321:ASN:HB3	2.53	0.43
1:B:57:HIS:O	1:B:303:LEU:HA	2.16	0.43
1:A:170:VAL:HG23	1:A:200[B]:THR:HG22	2.01	0.43
1:A:260:ILE:HG21	1:A:274:SER:HA	2.01	0.43
1:B:201[A]:HIS:CG	1:B:230[A]:HIS:CD2	3.05	0.43
1:B:200[B]:THR:CG2	1:B:212:GLN:HE22	2.30	0.43
1:B:231:SER:HB3	1:B:240:LEU:CD2	2.49	0.43
1:A:260:ILE:CG2	1:A:274:SER:HA	2.48	0.43
1:A:271:PHE:CD2	1:A:271:PHE:C	2.92	0.42
1:A:87:LEU:HD23	1:A:87:LEU:HA	1.84	0.42
1:B:341:ILE:HD12	1:B:341:ILE:H	1.85	0.42
1:B:55[A]:HIS:CE1	1:B:230[A]:HIS:CE1	3.07	0.42
1:B:57:HIS:HB2	1:B:303:LEU:HB3	2.00	0.42
1:A:46:ILE:HG23	1:A:355:ALA:HB1	2.02	0.42
1:B:87:LEU:HD23	1:B:87:LEU:HA	1.76	0.42
1:B:349:ILE:O	1:B:354:PRO:HD3	2.20	0.42
1:A:172:ILE:CG1	1:A:212[B]:GLN:HE21	2.33	0.42
1:A:127:ALA:HB2	1:A:167[B]:ILE:HD11	2.02	0.41
1:B:131:TRP:CG	1:B:132:LEU:N	2.87	0.41
1:B:37:ILE:HD12	1:B:46:ILE:HD13	2.02	0.41
1:A:353:ASN:OD1	1:A:356[B]:ARG:NH2	2.51	0.41
1:A:201[B]:HIS:ND1	1:A:230:HIS:HE1	2.18	0.41
1:B:338:GLU:HG3	1:B:338:GLU:O	2.20	0.41
1:A:208:GLY:O	1:A:212[B]:GLN:HG3	2.21	0.41
1:B:200[B]:THR:HG21	1:B:212:GLN:NE2	2.36	0.41
1:A:201[B]:HIS:CE1	4:A:728:HOH:O	2.74	0.41
1:B:199:ILE:HD12	1:B:200[A]:THR:N	2.36	0.40
1:A:199:ILE:HD12	1:A:200[B]:THR:N	2.36	0.40
1:B:81[B]:GLU:HG2	1:B:85[B]:ARG:HE	1.85	0.40

There are no symmetry-related clashes.

5.3 Torsion angles

5.3.1 Protein backbone

In the following table, the Percentiles column shows the percent Ramachandran outliers of the chain as a percentile score with respect to all X-ray entries followed by that with respect to entries of similar resolution.

The Analysed column shows the number of residues for which the backbone conformation was analysed, and the total number of residues.

Mol	Chain	Analysed	Favoured	Allowed	Outliers	Percentiles	
1	A	368/333 (110%)	355 (96%)	13 (4%)	0	100	100
1	B	348/333 (104%)	340 (98%)	8 (2%)	0	100	100
All	All	716/666 (108%)	695 (97%)	21 (3%)	0	100	100

There are no Ramachandran outliers to report.

5.3.2 Protein sidechains

In the following table, the Percentiles column shows the percent sidechain outliers of the chain as a percentile score with respect to all X-ray entries followed by that with respect to entries of similar resolution.

The Analysed column shows the number of residues for which the sidechain conformation was analysed, and the total number of residues.

Mol	Chain	Analysed	Rotameric	Outliers	Percentiles	
1	A	308/269 (114%)	297 (96%)	11 (4%)	42	13
1	B	288/269 (107%)	281 (98%)	7 (2%)	57	28
All	All	596/538 (111%)	578 (97%)	18 (3%)	48	18

All (18) residues with a non-rotameric sidechain are listed below:

Mol	Chain	Res	Type
1	A	51	PHE
1	A	106	LEU
1	A	206	GLN
1	A	212[A]	GLN
1	A	212[B]	GLN
1	A	271	PHE
1	A	274	SER
1	A	275	ARG

Continued on next page...

Continued from previous page...

Mol	Chain	Res	Type
1	A	293[A]	MET
1	A	293[B]	MET
1	A	303	LEU
1	B	51	PHE
1	B	196	VAL
1	B	211	GLN
1	B	234	THR
1	B	262	LEU
1	B	299	SER
1	B	303	LEU

Some sidechains can be flipped to improve hydrogen bonding and reduce clashes. There are no such sidechains identified.

5.3.3 RNA [i](#)

There are no RNA molecules in this entry.

5.4 Non-standard residues in protein, DNA, RNA chains [i](#)

There are no non-standard protein/DNA/RNA residues in this entry.

5.5 Carbohydrates [i](#)

There are no carbohydrates in this entry.

5.6 Ligand geometry [i](#)

Of 7 ligands modelled in this entry, 6 are monoatomic - leaving 1 for Mogul analysis.

In the following table, the Counts columns list the number of bonds (or angles) for which Mogul statistics could be retrieved, the number of bonds (or angles) that are observed in the model and the number of bonds (or angles) that are defined in the chemical component dictionary. The Link column lists molecule types, if any, to which the group is linked. The Z score for a bond length (or angle) is the number of standard deviations the observed value is removed from the expected value. A bond length (or angle) with $|Z| > 2$ is considered an outlier worth inspection. RMSZ is the root-mean-square of all Z scores of the bond lengths (or angles).

Mol	Type	Chain	Res	Link	Bond lengths			Bond angles		
					Counts	RMSZ	$\# Z > 2$	Counts	RMSZ	$\# Z > 2$
3	HLN	B	404[B]	2	21,21,21	2.16	3 (14%)	26,28,28	1.41	4 (15%)

In the following table, the Chirals column lists the number of chiral outliers, the number of chiral centers analysed, the number of these observed in the model and the number defined in the chemical component dictionary. Similar counts are reported in the Torsion and Rings columns. '-' means no outliers of that kind were identified.

Mol	Type	Chain	Res	Link	Chirals	Torsions	Rings
3	HLN	B	404[B]	2	-	0/10/12/12	0/2/2/2

All (3) bond length outliers are listed below:

Mol	Chain	Res	Type	Atoms	Z	Observed(Å)	Ideal(Å)
3	B	404[B]	HLN	CAK-CAL	-2.35	1.36	1.42
3	B	404[B]	HLN	PAG-OAH	2.63	1.62	1.56
3	B	404[B]	HLN	PAG-CAF	8.09	1.86	1.80

All (4) bond angle outliers are listed below:

Mol	Chain	Res	Type	Atoms	Z	Observed(°)	Ideal(°)
3	B	404[B]	HLN	OAJ-PAG-OAI	-3.68	106.73	114.71
3	B	404[B]	HLN	CAS-CAR-CAQ	-2.03	117.93	120.84
3	B	404[B]	HLN	PAG-CAF-CAE	2.02	118.12	114.67
3	B	404[B]	HLN	OAH-PAG-CAF	3.79	113.49	105.41

There are no chirality outliers.

There are no torsion outliers.

There are no ring outliers.

1 monomer is involved in 2 short contacts:

Mol	Chain	Res	Type	Clashes	Symm-Clashes
3	B	404[B]	HLN	2	0

5.7 Other polymers

There are no such residues in this entry.

5.8 Polymer linkage issues

There are no chain breaks in this entry.

6 Fit of model and data ⓘ

6.1 Protein, DNA and RNA chains ⓘ

In the following table, the column labelled ‘#RSRZ> 2’ contains the number (and percentage) of RSRZ outliers, followed by percent RSRZ outliers for the chain as percentile scores relative to all X-ray entries and entries of similar resolution. The OWAB column contains the minimum, median, 95th percentile and maximum values of the occupancy-weighted average B-factor per residue. The column labelled ‘Q< 0.9’ lists the number of (and percentage) of residues with an average occupancy less than 0.9.

Mol	Chain	Analysed	<RSRZ>	#RSRZ>2	OWAB(Å ²)	Q<0.9
1	A	327/333 (98%)	0.33	26 (7%) 15 13	10, 19, 69, 108	0
1	B	326/333 (97%)	0.19	14 (4%) 39 38	12, 25, 47, 72	1 (0%)
All	All	653/666 (98%)	0.26	40 (6%) 25 22	10, 22, 52, 108	1 (0%)

All (40) RSRZ outliers are listed below:

Mol	Chain	Res	Type	RSRZ
1	A	262	LEU	11.5
1	A	266	ALA	11.2
1	A	268	ALA	10.1
1	A	271	PHE	9.6
1	A	260	ILE	8.8
1	A	265	ASN	7.5
1	A	261	GLY	7.1
1	A	204	GLY	6.1
1	A	270	ALA	5.9
1	A	272[A]	MET	5.4
1	A	264	ASP	5.4
1	A	267	SER	4.9
1	A	269	THR	4.9
1	B	261	GLY	4.8
1	A	175	LYS	4.7
1	A	203	ALA	4.6
1	A	273	GLY	4.4
1	A	206	GLN	4.2
1	A	263	GLU	4.1
1	A	274	SER	4.0
1	B	262	LEU	3.9
1	B	205	SER	3.8
1	B	204	GLY	3.3
1	A	202[A]	THR	3.2

Continued on next page...

Continued from previous page...

Mol	Chain	Res	Type	RSRZ
1	B	265	ASN	2.9
1	A	205	SER	2.8
1	A	362	LEU	2.7
1	B	175	LYS	2.6
1	A	259	ALA	2.6
1	B	337	ARG	2.6
1	B	268	ALA	2.5
1	B	264	ASP	2.4
1	B	266	ALA	2.4
1	A	338[A]	GLU	2.4
1	B	156	TYR	2.3
1	A	208	GLY	2.3
1	B	260	ILE	2.2
1	B	334	PRO	2.2
1	A	207	ARG	2.1
1	B	203	ALA	2.1

6.2 Non-standard residues in protein, DNA, RNA chains [i](#)

There are no non-standard protein/DNA/RNA residues in this entry.

6.3 Carbohydrates [i](#)

There are no carbohydrates in this entry.

6.4 Ligands [i](#)

In the following table, the Atoms column lists the number of modelled atoms in the group and the number defined in the chemical component dictionary. LLDF column lists the quality of electron density of the group with respect to its neighbouring residues in protein, DNA or RNA chains. The B-factors column lists the minimum, median, 95th percentile and maximum values of B factors of atoms in the group. The column labelled 'Q< 0.9' lists the number of atoms with occupancy less than 0.9.

Mol	Type	Chain	Res	Atoms	RSCC	RSR	LLDF	B-factors(Å ²)	Q<0.9
3	HLN	B	404[B]	20/20	0.82	0.27	2.25	11,37,42,45	20
2	ZN	A	402[A]	1/1	0.99	0.09	-1.21	17,17,17,17	1
2	ZN	B	402[A]	1/1	0.99	0.05	-2.11	20,20,20,20	1
2	ZN	B	403[B]	1/1	0.98	0.05	-2.16	18,18,18,18	1
2	ZN	A	401[A]	1/1	1.00	0.07	-2.26	14,14,14,14	1

Continued on next page...

Continued from previous page...

Mol	Type	Chain	Res	Atoms	RSCC	RSR	LLDF	B-factors(\AA^2)	Q<0.9
2	ZN	B	401[A]	1/1	0.98	0.05	-2.30	19,19,19,19	1
2	ZN	A	403[B]	1/1	0.99	0.07	-2.41	9,9,9,9	1

6.5 Other polymers [i](#)

There are no such residues in this entry.