



Full wwPDB X-ray Structure Validation Report ⓘ

Jan 31, 2016 – 07:07 PM GMT

PDB ID : 1E6Q
Title : MYROSINASE FROM SINAPIS ALBA with the bound transition state analogue gluco-tetrazole
Authors : Burmeister, W.P.
Deposited on : 2000-08-22
Resolution : 1.35 Å(reported)

This is a Full wwPDB X-ray Structure Validation Report for a publicly released PDB entry.
We welcome your comments at validation@mail.wwpdb.org
A user guide is available at
<http://wwpdb.org/validation/2016/XrayValidationReportHelp>
with specific help available everywhere you see the ⓘ symbol.

The following versions of software and data (see [references ⓘ](#)) were used in the production of this report:

MolProbity : 4.02b-467
Mogul : 1.7 (RC4), CSD as536be (2015)
Xtriage (Phenix) : 1.9-1692
EDS : rb-20026688
Percentile statistics : 20151230.v01 (using entries in the PDB archive December 30th 2015)
Refmac : 5.8.0135
CCP4 : 6.5.0
Ideal geometry (proteins) : Engh & Huber (2001)
Ideal geometry (DNA, RNA) : Parkinson et al. (1996)
Validation Pipeline (wwPDB-VP) : trunk26865

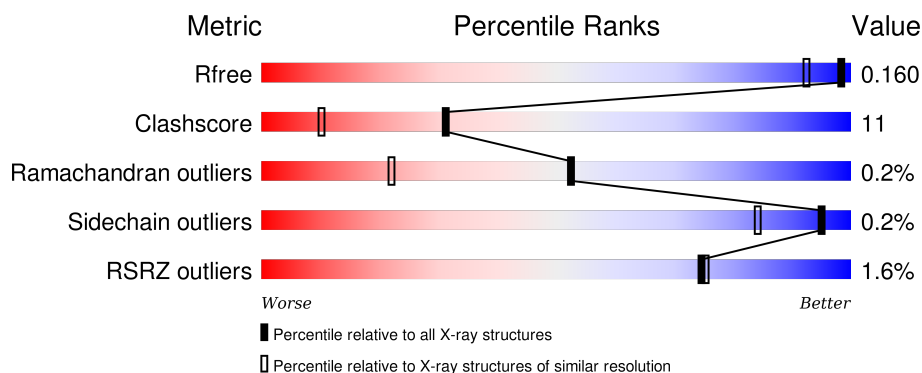
1 Overall quality at a glance

The following experimental techniques were used to determine the structure:

X-RAY DIFFRACTION

The reported resolution of this entry is 1.35 Å.

Percentile scores (ranging between 0-100) for global validation metrics of the entry are shown in the following graphic. The table shows the number of entries on which the scores are based.



Metric	Whole archive (#Entries)	Similar resolution (#Entries, resolution range(Å))
R_{free}	91344	2199 (1.40-1.32)
Clashscore	102246	2337 (1.40-1.32)
Ramachandran outliers	100387	2280 (1.40-1.32)
Sidechain outliers	100360	2279 (1.40-1.32)
RSRZ outliers	91569	2199 (1.40-1.32)

The table below summarises the geometric issues observed across the polymeric chains and their fit to the electron density. The red, orange, yellow and green segments on the lower bar indicate the fraction of residues that contain outliers for ≥ 3 , 2, 1 and 0 types of geometric quality criteria. A grey segment represents the fraction of residues that are not modelled. The numeric value for each fraction is indicated below the corresponding segment, with a dot representing fractions $\leq 5\%$. The upper red bar (where present) indicates the fraction of residues that have poor fit to the electron density. The numeric value is given above the bar.

Mol	Chain	Length	Quality of chain
1	M	501	

The following table lists non-polymeric compounds, carbohydrate monomers and non-standard residues in protein, DNA, RNA chains that are outliers for geometric or electron-density-fit criteria:

Mol	Type	Chain	Res	Chirality	Geometry	Clashes	Electron density
2	NAG	M	931	-	-	X	X

Continued on next page...

Continued from previous page...

Mol	Type	Chain	Res	Chirality	Geometry	Clashes	Electron density
2	NAG	M	961	-	-	-	X
3	NAG	M	923	-	-	-	X
4	NAG	M	942	-	-	-	X
5	BMA	M	954	-	-	X	-
5	MAN	M	957	-	-	X	-
6	NTZ	M	999	-	-	-	X
7	GOL	M	1502[A]	-	-	-	X
7	GOL	M	1502[B]	-	-	-	X
7	GOL	M	1503	-	-	-	X
7	GOL	M	1534	-	-	-	X
8	SO4	M	1513	-	-	-	X
8	SO4	M	1515	-	-	-	X

2 Entry composition [i](#)

There are 10 unique types of molecules in this entry. The entry contains 5195 atoms, of which 0 are hydrogens and 0 are deuteriums.

In the tables below, the ZeroOcc column contains the number of atoms modelled with zero occupancy, the AltConf column contains the number of residues with at least one atom in alternate conformation and the Trace column contains the number of residues modelled with at most 2 atoms.

- Molecule 1 is a protein called MYROSINASE MA1.

Mol	Chain	Residues	Atoms					ZeroOcc	AltConf	Trace
1	M	499	Total	C	N	O	S	0	21	0
			4082	2618	660	788	16			

- Molecule 2 is SUGAR (N-ACETYL-D-GLUCOSAMINE) (three-letter code: NAG) (formula: $C_8H_{15}NO_6$).



Mol	Chain	Residues	Atoms				ZeroOcc	AltConf
2	M	1	Total	C	N	O	0	0
			14	8	1	5		
2	M	1	Total	C	N	O	0	0
			14	8	1	5		
2	M	1	Total	C	N	O	0	0
			14	8	1	5		
2	M	1	Total	C	N	O	0	0
			14	8	1	5		
2	M	1	Total	C	N	O	0	0
			14	8	1	5		

Continued on next page...

Continued from previous page...

Mol	Chain	Residues	Atoms				ZeroOcc	AltConf
2	M	1	Total	C	N	O	0	0
			14	8	1	5		

- Molecule 3 is a polymer of unknown type called SUGAR (2-MER).

Mol	Chain	Residues	Atoms				ZeroOcc	AltConf
3	M	2	Total	C	N	O	0	0
			28	16	2	10		

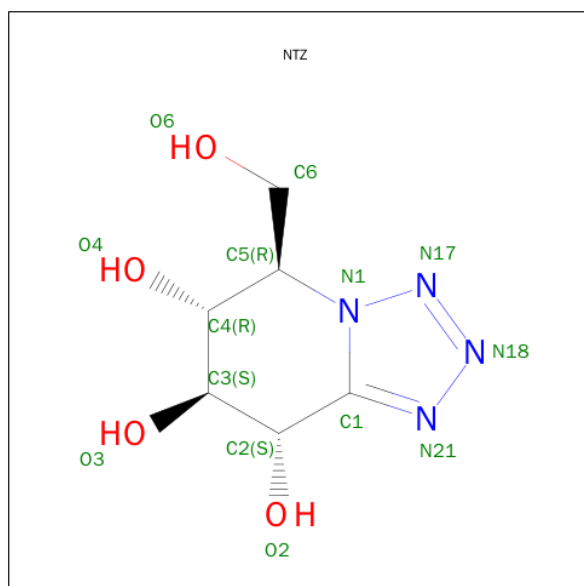
- Molecule 4 is a polymer of unknown type called SUGAR (5-MER).

Mol	Chain	Residues	Atoms				ZeroOcc	AltConf
4	M	5	Total	C	N	O	0	0
			58	33	2	23		

- Molecule 5 is a polymer of unknown type called SUGAR (7-MER).

Mol	Chain	Residues	Atoms				ZeroOcc	AltConf
5	M	7	Total	C	N	O	0	0
			80	45	2	33		

- Molecule 6 is NOJIRIMYCINE TETRAZOLE (three-letter code: NTZ) (formula: C₆H₁₀N₄O₄).



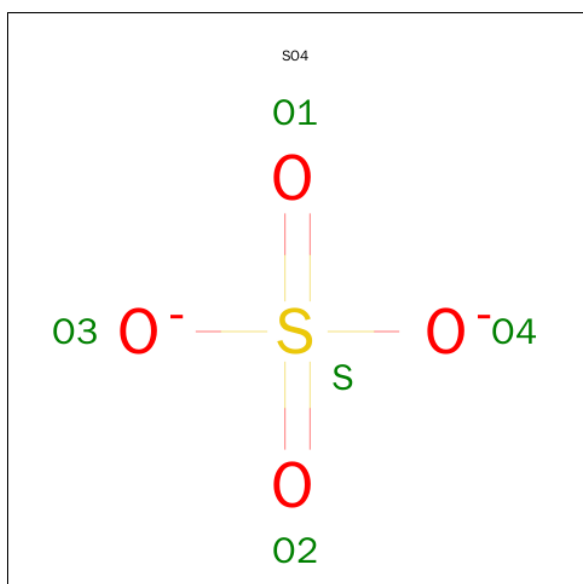
Mol	Chain	Residues	Atoms				ZeroOcc	AltConf
6	M	1	Total	C	N	O	0	0
			14	6	4	4		

- Molecule 7 is GLYCEROL (three-letter code: GOL) (formula: $C_3H_8O_3$).



Mol	Chain	Residues	Atoms			ZeroOcc	AltConf
7	M	1	Total	C	O	0	1
			7	3	4		
7	M	1	Total	C	O	0	0
			6	3	3		
7	M	1	Total	C	O	0	0
			6	3	3		
7	M	1	Total	C	O	0	0
			6	3	3		

- Molecule 8 is SULFATE ION (three-letter code: SO4) (formula: O_4S).



Mol	Chain	Residues	Atoms			ZeroOcc	AltConf
8	M	1	Total	O	S	0	0
			5	4	1		
8	M	1	Total	O	S	0	0
			5	4	1		
8	M	1	Total	O	S	0	0
			5	4	1		
8	M	1	Total	O	S	0	0
			5	4	1		
8	M	1	Total	O	S	0	0
			5	4	1		
8	M	1	Total	O	S	0	0
			5	4	1		

- Molecule 9 is ZINC ION (three-letter code: ZN) (formula: Zn).

Mol	Chain	Residues	Atoms		ZeroOcc	AltConf
9	M	1	Total	Zn	0	0
			1	1		

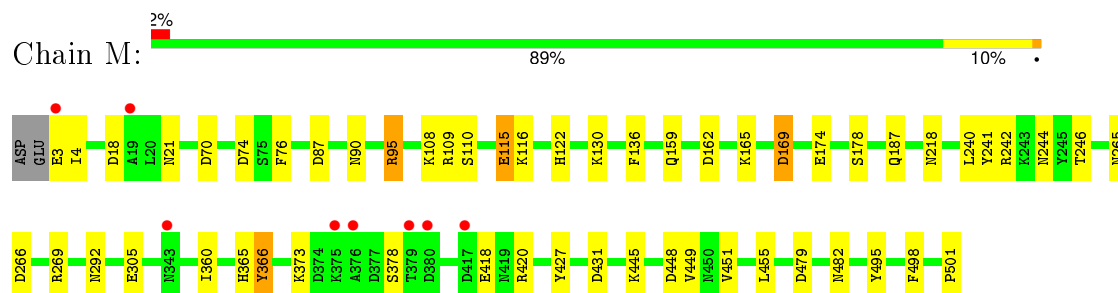
- Molecule 10 is water.

Mol	Chain	Residues	Atoms		ZeroOcc	AltConf
10	M	788	Total	O	0	0
			788	788		

3 Residue-property plots

These plots are drawn for all protein, RNA and DNA chains in the entry. The first graphic for a chain summarises the proportions of errors displayed in the second graphic. The second graphic shows the sequence view annotated by issues in geometry and electron density. Residues are color-coded according to the number of geometric quality criteria for which they contain at least one outlier: green = 0, yellow = 1, orange = 2 and red = 3 or more. A red dot above a residue indicates a poor fit to the electron density ($RSRZ > 2$). Stretches of 2 or more consecutive residues without any outlier are shown as a green connector. Residues present in the sample, but not in the model, are shown in grey.

• Molecule 1: MYROSINASE MA1



4 Data and refinement statistics

Property	Value	Source
Space group	C 2 2 21	Depositor
Cell constants a, b, c, α , β , γ	135.30Å 137.20Å 80.60Å 90.00° 90.00° 90.00°	Depositor
Resolution (Å)	10.00 – 1.35 9.99 – 1.36	Depositor EDS
% Data completeness (in resolution range)	93.7 (10.00-1.35) 93.1 (9.99-1.36)	Depositor EDS
R_{merge}	0.08	Depositor
R_{sym}	0.08	Depositor
$\langle I/\sigma(I) \rangle$ ¹	3.79 (at 1.36Å)	Xtriage
Refinement program	REFMAC	Depositor
R, R_{free}	0.119 , 0.146 0.137 , 0.160	Depositor DCC
R_{free} test set	7600 reflections (5.33%)	DCC
Wilson B-factor (Å ²)	10.2	Xtriage
Anisotropy	0.121	Xtriage
Bulk solvent k_{sol} (e/Å ³), B_{sol} (Å ²)	0.54 , 66.2	EDS
Estimated twinning fraction	0.012 for -k,-h,-l	Xtriage
L-test for twinning ²	$\langle L \rangle = 0.50$, $\langle L^2 \rangle = 0.34$	Xtriage
Outliers	0 of 150241 reflections	Xtriage
F_o, F_c correlation	0.96	EDS
Total number of atoms	5195	wwPDB-VP
Average B, all atoms (Å ²)	16.0	wwPDB-VP

Xtriage's analysis on translational NCS is as follows: *The largest off-origin peak in the Patterson function is 4.68% of the height of the origin peak. No significant pseudotranslation is detected.*

¹Intensities estimated from amplitudes.

²Theoretical values of $\langle |L| \rangle$, $\langle L^2 \rangle$ for acentric reflections are 0.5, 0.375 respectively for untwinned datasets, and 0.333, 0.2 for perfectly twinned datasets.

5 Model quality ⓘ

5.1 Standard geometry ⓘ

Bond lengths and bond angles in the following residue types are not validated in this section: XYP, GOL, ZN, BMA, NAG, NTZ, SO4, MAN, FUC

The Z score for a bond length (or angle) is the number of standard deviations the observed value is removed from the expected value. A bond length (or angle) with $|Z| > 5$ is considered an outlier worth inspection. RMSZ is the root-mean-square of all Z scores of the bond lengths (or angles).

Mol	Chain	Bond lengths		Bond angles	
		RMSZ	$\# Z > 5$	RMSZ	$\# Z > 5$
1	M	0.85	3/4290 (0.1%)	1.29	34/5833 (0.6%)

All (3) bond length outliers are listed below:

Mol	Chain	Res	Type	Atoms	Z	Observed(Å)	Ideal(Å)
1	M	501	PRO	N-CD	6.18	1.56	1.47
1	M	115	GLU	CD-OE2	5.75	1.31	1.25
1	M	178	SER	CB-OG	5.63	1.49	1.42

All (34) bond angle outliers are listed below:

Mol	Chain	Res	Type	Atoms	Z	Observed(°)	Ideal(°)
1	M	115	GLU	OE1-CD-OE2	-14.93	105.38	123.30
1	M	109	ARG	NE-CZ-NH2	-11.81	114.40	120.30
1	M	266	ASP	CB-CG-OD2	-11.11	108.30	118.30
1	M	269	ARG	NE-CZ-NH2	-9.90	115.35	120.30
1	M	109	ARG	NH1-CZ-NH2	9.09	129.40	119.40
1	M	431	ASP	CB-CG-OD2	-8.44	110.70	118.30
1	M	109	ARG	NE-CZ-NH1	-8.21	116.19	120.30
1	M	427	TYR	CB-CG-CD2	-7.47	116.52	121.00
1	M	87	ASP	CB-CG-OD2	-7.14	111.87	118.30
1	M	366[A]	TYR	CB-CG-CD1	7.01	125.21	121.00
1	M	366[B]	TYR	CB-CG-CD1	7.01	125.21	121.00
1	M	95	ARG	NE-CZ-NH1	6.86	123.73	120.30
1	M	242	ARG	NE-CZ-NH1	6.69	123.65	120.30
1	M	70	ASP	CB-CG-OD1	6.48	124.14	118.30
1	M	242	ARG	NE-CZ-NH2	-6.22	117.19	120.30
1	M	482	ASN	CB-CG-OD1	5.96	133.52	121.60
1	M	420	ARG	CD-NE-CZ	5.85	131.79	123.60
1	M	74	ASP	CB-CG-OD1	5.74	123.47	118.30

Continued on next page...

Continued from previous page...

Mol	Chain	Res	Type	Atoms	Z	Observed(°)	Ideal(°)
1	M	479	ASP	CB-CG-OD1	5.74	123.46	118.30
1	M	448	ASP	CB-CG-OD1	5.71	123.44	118.30
1	M	76	PHE	CB-CG-CD1	-5.67	116.83	120.80
1	M	169[A]	ASP	CB-CG-OD2	-5.41	113.43	118.30
1	M	169[B]	ASP	CB-CG-OD2	-5.41	113.43	118.30
1	M	18	ASP	CB-CG-OD1	5.27	123.04	118.30
1	M	418	GLU	CG-CD-OE2	-5.24	107.82	118.30
1	M	366[A]	TYR	CB-CG-CD2	-5.22	117.87	121.00
1	M	366[B]	TYR	CB-CG-CD2	-5.22	117.87	121.00
1	M	241	TYR	CG-CD2-CE2	5.19	125.45	121.30
1	M	482	ASN	CA-CB-CG	-5.16	102.05	113.40
1	M	162	ASP	CB-CG-OD2	-5.13	113.69	118.30
1	M	495	TYR	CB-CG-CD1	5.11	124.07	121.00
1	M	115	GLU	CG-CD-OE1	5.09	128.47	118.30
1	M	305[A]	GLU	CB-CG-CD	5.01	127.73	114.20
1	M	305[B]	GLU	CB-CG-CD	5.01	127.73	114.20

There are no chirality outliers.

There are no planarity outliers.

5.2 Too-close contacts ⓘ

In the following table, the Non-H and H(model) columns list the number of non-hydrogen atoms and hydrogen atoms in the chain respectively. The H(added) column lists the number of hydrogen atoms added and optimized by MolProbity. The Clashes column lists the number of clashes within the asymmetric unit, whereas Symm-Clashes lists symmetry related clashes.

Mol	Chain	Non-H	H(model)	H(added)	Clashes	Symm-Clashes
1	M	4082	0	3835	69	0
2	M	84	0	77	14	0
3	M	28	0	25	5	0
4	M	58	0	50	3	0
5	M	80	0	66	20	0
6	M	14	0	10	0	0
7	M	25	0	30	1	0
8	M	35	0	0	0	0
9	M	1	0	0	0	0
10	M	788	0	0	28	1
All	All	5195	0	4093	86	1

The all-atom clashscore is defined as the number of clashes found per 1000 atoms (including

hydrogen atoms). The all-atom clashscore for this structure is 11.

All (86) close contacts within the same asymmetric unit are listed below, sorted by their clash magnitude.

Atom-1	Atom-2	Interatomic distance (Å)	Clash overlap (Å)
1:M:21:ASN:HD21	2:M:901:NAG:C1	0.94	1.57
1:M:244:ASN:HD21	2:M:931:NAG:C1	0.96	1.56
1:M:90:ASN:HD21	2:M:911:NAG:C1	0.92	1.52
1:M:292:ASN:HD21	5:M:951:NAG:C1	0.89	1.52
1:M:218:ASN:HD21	3:M:921:NAG:C1	0.87	1.50
1:M:360[B]:ILE:HD11	1:M:366[B]:TYR:CZ	1.43	1.50
1:M:360[B]:ILE:HD11	1:M:366[B]:TYR:OH	1.19	1.34
1:M:360[B]:ILE:CD1	1:M:366[B]:TYR:CZ	2.11	1.33
1:M:360[B]:ILE:CG1	1:M:366[B]:TYR:CE1	2.12	1.31
1:M:360[B]:ILE:HD11	1:M:366[B]:TYR:CE1	1.75	1.22
1:M:360[B]:ILE:CD1	1:M:366[B]:TYR:CE1	2.28	1.16
1:M:360[B]:ILE:CD1	1:M:366[B]:TYR:OH	1.98	1.07
5:M:954:BMA:H61	5:M:957:MAN:H61	1.37	1.06
1:M:360[B]:ILE:HG12	1:M:366[B]:TYR:CE1	1.91	1.04
5:M:957:MAN:H61	10:M:2735:HOH:O	1.62	0.99
1:M:165:LYS:NZ	2:M:931:NAG:H82	1.81	0.95
1:M:360[B]:ILE:HG13	1:M:366[B]:TYR:CE1	1.97	0.95
1:M:360[B]:ILE:HG12	1:M:366[B]:TYR:CD1	2.02	0.93
1:M:246:THR:HG22	10:M:2391:HOH:O	1.69	0.91
5:M:954:BMA:C6	5:M:957:MAN:H61	2.01	0.90
1:M:360[B]:ILE:CG1	1:M:366[B]:TYR:CD1	2.59	0.86
1:M:165:LYS:HZ1	2:M:931:NAG:H82	1.38	0.83
1:M:218:ASN:HD21	3:M:921:NAG:C2	1.90	0.83
1:M:116:LYS:HG2	10:M:2229:HOH:O	1.79	0.83
5:M:957:MAN:H62	10:M:2745:HOH:O	1.81	0.80
1:M:130:LYS:HB3	10:M:2264:HOH:O	1.81	0.79
1:M:21:ASN:HD21	2:M:901:NAG:C2	1.91	0.79
1:M:130:LYS:HG3	10:M:2251:HOH:O	1.82	0.79
1:M:360[B]:ILE:CG1	1:M:366[B]:TYR:CZ	2.59	0.76
5:M:954:BMA:H61	5:M:957:MAN:C6	2.15	0.76
1:M:4:ILE:HD11	1:M:445:LYS:HD2	1.68	0.76
1:M:130:LYS:HB3	10:M:2100:HOH:O	1.88	0.74
1:M:265:ASN:ND2	4:M:942:NAG:C2	2.54	0.70
7:M:1503:GOL:O3	10:M:2760:HOH:O	2.08	0.69
1:M:218:ASN:ND2	3:M:921:NAG:C2	2.54	0.66
5:M:954:BMA:C4	10:M:2735:HOH:O	2.43	0.65
1:M:365:HIS:HE1	10:M:2545:HOH:O	1.78	0.65
1:M:265:ASN:CG	4:M:942:NAG:C1	2.63	0.65

Continued on next page...

Continued from previous page...

Atom-1	Atom-2	Interatomic distance (Å)	Clash overlap (Å)
5:M:954:BMA:C6	5:M:957:MAN:C6	2.74	0.64
5:M:954:BMA:C5	10:M:2735:HOH:O	2.46	0.62
1:M:90:ASN:ND2	2:M:911:NAG:C2	2.58	0.62
1:M:115:GLU:HG3	10:M:2234:HOH:O	2.01	0.61
1:M:360[B]:ILE:HG12	1:M:366[B]:TYR:CZ	2.28	0.60
1:M:169[B]:ASP:HB2	1:M:240:LEU:HD21	1.83	0.60
1:M:108:LYS:HD2	10:M:2309:HOH:O	2.01	0.60
1:M:360[B]:ILE:HG13	1:M:366[B]:TYR:CD1	2.35	0.60
1:M:373:LYS:NZ	1:M:378:SER:OG	2.28	0.59
5:M:957:MAN:C6	10:M:2735:HOH:O	2.35	0.59
1:M:365:HIS:HD2	10:M:2254:HOH:O	1.84	0.58
1:M:244:ASN:ND2	2:M:931:NAG:O5	2.36	0.58
1:M:218:ASN:ND2	3:M:921:NAG:O5	2.32	0.58
1:M:165:LYS:HZ2	2:M:931:NAG:H82	1.68	0.56
1:M:292:ASN:ND2	5:M:951:NAG:C2	2.62	0.56
5:M:957:MAN:C5	10:M:2744:HOH:O	2.54	0.56
1:M:108:LYS:HE3	1:M:110:SER:OG	2.06	0.55
1:M:360[A]:ILE:HG23	10:M:2532:HOH:O	2.06	0.54
1:M:218:ASN:CG	3:M:921:NAG:C1	2.69	0.54
1:M:159:GLN:NE2	10:M:2306:HOH:O	2.40	0.54
1:M:292:ASN:CG	5:M:951:NAG:C1	2.69	0.53
1:M:21:ASN:CG	2:M:901:NAG:C1	2.72	0.52
1:M:360[B]:ILE:HD13	1:M:366[B]:TYR:CZ	2.34	0.52
1:M:265:ASN:ND2	4:M:942:NAG:O5	2.37	0.51
1:M:4:ILE:HD11	1:M:445:LYS:CD	2.39	0.50
1:M:90:ASN:ND2	2:M:911:NAG:O5	2.36	0.50
1:M:122:HIS:HE1	1:M:174:GLU:O	1.95	0.48
1:M:360[B]:ILE:HG12	1:M:366[B]:TYR:CG	2.46	0.48
1:M:445:LYS:HE2	10:M:2635:HOH:O	2.14	0.48
1:M:21:ASN:ND2	2:M:901:NAG:C2	2.63	0.47
1:M:292:ASN:ND2	5:M:951:NAG:O5	2.36	0.47
1:M:115:GLU:CD	10:M:2234:HOH:O	2.53	0.47
5:M:954:BMA:C6	10:M:2735:HOH:O	2.63	0.47
1:M:130:LYS:HG2	10:M:2102:HOH:O	2.15	0.47
1:M:360[A]:ILE:CG2	10:M:2532:HOH:O	2.62	0.46
1:M:95:ARG:HA	1:M:136:PHE:O	2.16	0.46
5:M:957:MAN:H4	10:M:2744:HOH:O	2.15	0.45
1:M:449[B]:VAL:HG23	1:M:451:VAL:HG23	1.99	0.45
5:M:957:MAN:C6	10:M:2744:HOH:O	2.66	0.44
1:M:95:ARG:HB2	1:M:455:LEU:HD13	2.01	0.43
1:M:21:ASN:HA	1:M:498:PHE:CD2	2.54	0.42

Continued on next page...

Continued from previous page...

Atom-1	Atom-2	Interatomic distance (Å)	Clash overlap (Å)
5:M:957:MAN:C5	10:M:2746:HOH:O	2.67	0.42
5:M:957:MAN:C6	10:M:2746:HOH:O	2.67	0.42
1:M:130:LYS:CB	10:M:2264:HOH:O	2.52	0.42
1:M:240:LEU:HD13	2:M:931:NAG:H83	2.02	0.42
1:M:240:LEU:CD1	2:M:931:NAG:H83	2.50	0.42
5:M:954:BMA:O6	5:M:957:MAN:C6	2.55	0.41
1:M:4:ILE:CD1	1:M:445:LYS:HD2	2.45	0.40

All (1) symmetry-related close contacts are listed below. The label for Atom-2 includes the symmetry operator and encoded unit-cell translations to be applied.

Atom-1	Atom-2	Interatomic distance (Å)	Clash overlap (Å)
10:M:2430:HOH:O	10:M:2760:HOH:O[6_564]	2.15	0.05

5.3 Torsion angles [i](#)

5.3.1 Protein backbone [i](#)

In the following table, the Percentiles column shows the percent Ramachandran outliers of the chain as a percentile score with respect to all X-ray entries followed by that with respect to entries of similar resolution.

The Analysed column shows the number of residues for which the backbone conformation was analysed, and the total number of residues.

Mol	Chain	Analysed	Favoured	Allowed	Outliers	Percentiles
1	M	518/501 (103%)	505 (98%)	12 (2%)	1 (0%)	52 22

All (1) Ramachandran outliers are listed below:

Mol	Chain	Res	Type
1	M	187	GLN

5.3.2 Protein sidechains [i](#)

In the following table, the Percentiles column shows the percent sidechain outliers of the chain as a percentile score with respect to all X-ray entries followed by that with respect to entries of similar resolution.

The Analysed column shows the number of residues for which the sidechain conformation was

analysed, and the total number of residues.

Mol	Chain	Analysed	Rotameric	Outliers	Percentiles	
1	M	456/437 (104%)	455 (100%)	1 (0%)	95	84

All (1) residues with a non-rotameric sidechain are listed below:

Mol	Chain	Res	Type
1	M	3	GLU

Some sidechains can be flipped to improve hydrogen bonding and reduce clashes. All (7) such sidechains are listed below:

Mol	Chain	Res	Type
1	M	90	ASN
1	M	122	HIS
1	M	159	GLN
1	M	218	ASN
1	M	244	ASN
1	M	292	ASN
1	M	365	HIS

5.3.3 RNA ⓘ

There are no RNA molecules in this entry.

5.4 Non-standard residues in protein, DNA, RNA chains ⓘ

There are no non-standard protein/DNA/RNA residues in this entry.

5.5 Carbohydrates ⓘ

14 carbohydrates are modelled in this entry.

In the following table, the Counts columns list the number of bonds (or angles) for which Mogul statistics could be retrieved, the number of bonds (or angles) that are observed in the model and the number of bonds (or angles) that are defined in the chemical component dictionary. The Link column lists molecule types, if any, to which the group is linked. The Z score for a bond length (or angle) is the number of standard deviations the observed value is removed from the expected value. A bond length (or angle) with $|Z| > 2$ is considered an outlier worth inspection. RMSZ is the root-mean-square of all Z scores of the bond lengths (or angles).

Mol	Type	Chain	Res	Link	Bond lengths			Bond angles		
					Counts	RMSZ	# Z > 2	Counts	RMSZ	# Z > 2
3	NAG	M	921	1,3	14,14,15	1.28	3 (21%)	15,19,21	2.95	4 (26%)
3	NAG	M	923	3	14,14,15	0.87	0	15,19,21	4.31	9 (60%)
4	FUC	M	941	4	10,10,11	1.54	2 (20%)	14,14,16	1.90	4 (28%)
4	NAG	M	942	1,4	14,14,15	0.88	0	15,19,21	2.61	5 (33%)
4	NAG	M	943	4	14,14,15	0.99	1 (7%)	15,19,21	1.06	1 (6%)
4	BMA	M	944	4	11,11,12	1.66	2 (18%)	14,15,17	1.78	4 (28%)
4	XYP	M	945	4	9,9,10	1.19	1 (11%)	12,12,14	1.80	6 (50%)
5	NAG	M	951	1,5	14,14,15	1.67	3 (21%)	15,19,21	2.75	4 (26%)
5	FUC	M	952	5	10,10,11	2.34	5 (50%)	14,14,16	2.35	4 (28%)
5	NAG	M	953	5	14,14,15	1.37	2 (14%)	15,19,21	2.62	7 (46%)
5	BMA	M	954	5	11,11,12	2.46	3 (27%)	14,15,17	5.47	9 (64%)
5	XYP	M	955	5	9,9,10	1.60	1 (11%)	12,12,14	2.59	6 (50%)
5	MAN	M	956	5	11,11,12	1.24	2 (18%)	14,15,17	2.55	8 (57%)
5	MAN	M	957	5	11,11,12	2.69	3 (27%)	14,15,17	7.28	9 (64%)

In the following table, the Chirals column lists the number of chiral outliers, the number of chiral centers analysed, the number of these observed in the model and the number defined in the chemical component dictionary. Similar counts are reported in the Torsion and Rings columns. '-' means no outliers of that kind were identified.

Mol	Type	Chain	Res	Link	Chirals	Torsions	Rings
3	NAG	M	921	1,3	-	0/6/23/26	0/1/1/1
3	NAG	M	923	3	-	0/6/23/26	0/1/1/1
4	FUC	M	941	4	-	0/0/17/20	0/1/1/1
4	NAG	M	942	1,4	-	0/6/23/26	0/1/1/1
4	NAG	M	943	4	-	0/6/23/26	0/1/1/1
4	BMA	M	944	4	-	0/2/19/22	0/1/1/1
4	XYP	M	945	4	-	0/0/14/17	0/1/1/1
5	NAG	M	951	1,5	-	0/6/23/26	0/1/1/1
5	FUC	M	952	5	-	0/0/17/20	0/1/1/1
5	NAG	M	953	5	-	0/6/23/26	0/1/1/1
5	BMA	M	954	5	-	0/2/19/22	0/1/1/1
5	XYP	M	955	5	-	0/0/14/17	0/1/1/1
5	MAN	M	956	5	-	0/2/19/22	0/1/1/1
5	MAN	M	957	5	-	0/2/19/22	0/1/1/1

All (28) bond length outliers are listed below:

Mol	Chain	Res	Type	Atoms	Z	Observed(Å)	Ideal(Å)
5	M	954	BMA	C2-C3	-6.79	1.43	1.52
5	M	951	NAG	C1-C2	-4.41	1.46	1.52
4	M	944	BMA	C2-C3	-3.77	1.47	1.52
5	M	953	NAG	C3-C2	-2.28	1.47	1.52
5	M	951	NAG	C2-N2	-2.09	1.42	1.46
5	M	952	FUC	O5-C1	-2.06	1.40	1.43
5	M	952	FUC	O4-C4	2.00	1.47	1.43
3	M	921	NAG	O5-C5	2.06	1.48	1.43
4	M	945	XYP	O3B-C3B	2.14	1.48	1.43
4	M	941	FUC	C6-C5	2.15	1.56	1.51
5	M	954	BMA	O5-C1	2.16	1.47	1.43
3	M	921	NAG	O4-C4	2.17	1.48	1.43
5	M	956	MAN	C4-C5	2.24	1.57	1.53
5	M	956	MAN	O5-C5	2.25	1.48	1.43
3	M	921	NAG	C3-C2	2.35	1.57	1.52
5	M	952	FUC	C1-C2	2.39	1.57	1.52
4	M	943	NAG	C1-C2	2.48	1.55	1.52
5	M	954	BMA	C4-C5	2.62	1.58	1.53
5	M	951	NAG	O5-C5	2.63	1.49	1.43
4	M	944	BMA	C4-C5	2.66	1.58	1.53
5	M	953	NAG	C1-C2	3.16	1.56	1.52
4	M	941	FUC	C2-C3	3.20	1.56	1.52
5	M	952	FUC	C4-C5	3.38	1.59	1.52
5	M	955	XYP	C2B-C3B	3.79	1.57	1.52
5	M	957	MAN	C2-C3	3.97	1.58	1.52
5	M	957	MAN	C1-C2	4.09	1.62	1.52
5	M	952	FUC	C2-C3	4.86	1.59	1.52
5	M	957	MAN	O5-C5	6.07	1.56	1.43

All (80) bond angle outliers are listed below:

Mol	Chain	Res	Type	Atoms	Z	Observed(°)	Ideal(°)
3	M	923	NAG	C1-O5-C5	-13.47	95.16	112.25
5	M	957	MAN	C1-O5-C5	-12.78	96.03	112.25
5	M	957	MAN	O5-C5-C6	-10.31	85.02	107.35
3	M	921	NAG	C1-O5-C5	-9.73	99.90	112.25
5	M	951	NAG	C1-O5-C5	-8.51	101.45	112.25
5	M	954	BMA	O4-C4-C3	-8.46	91.30	110.34
5	M	957	MAN	O5-C1-C2	-7.20	99.17	110.86
5	M	957	MAN	O2-C2-C1	-6.67	95.84	109.21
4	M	942	NAG	C1-O5-C5	-6.45	104.06	112.25
5	M	954	BMA	O5-C5-C6	-6.31	93.69	107.35
5	M	953	NAG	C2-N2-C7	-6.14	115.16	123.04

Continued on next page...

Continued from previous page...

Mol	Chain	Res	Type	Atoms	Z	Observed(°)	Ideal(°)
5	M	952	FUC	C1-C2-C3	-5.73	102.76	109.54
4	M	942	NAG	C2-N2-C7	-5.46	116.02	123.04
5	M	955	XYP	C5B-C4B-C3B	-4.79	103.88	109.54
5	M	953	NAG	C8-C7-N2	-4.64	107.23	116.11
5	M	954	BMA	C1-O5-C5	-4.41	106.65	112.25
4	M	941	FUC	O3-C3-C2	-4.14	102.51	110.00
5	M	955	XYP	O2B-C2B-C3B	-4.09	101.90	110.12
3	M	921	NAG	C2-N2-C7	-3.88	118.06	123.04
5	M	952	FUC	C6-C5-C4	-3.87	105.46	113.08
5	M	955	XYP	C4B-C3B-C2B	-3.86	107.42	111.24
5	M	956	MAN	C2-C3-C4	-3.83	104.54	111.04
4	M	941	FUC	O2-C2-C3	-3.79	102.49	110.12
5	M	954	BMA	C1-C2-C3	-3.79	105.06	109.54
5	M	952	FUC	O2-C2-C1	-3.62	101.94	109.21
3	M	923	NAG	C6-C5-C4	-3.33	104.80	113.02
5	M	954	BMA	O2-C2-C3	-3.26	103.56	110.12
3	M	923	NAG	O5-C5-C6	-3.05	100.74	107.35
5	M	953	NAG	O4-C4-C3	-3.02	103.53	110.34
3	M	923	NAG	C2-N2-C7	-2.95	119.25	123.04
5	M	956	MAN	O5-C5-C6	-2.92	101.02	107.35
5	M	953	NAG	C3-C2-N2	-2.88	103.67	110.56
4	M	945	XYP	O2B-C2B-C3B	-2.82	104.44	110.12
5	M	953	NAG	O4-C4-C5	-2.81	101.79	109.24
4	M	941	FUC	C1-C2-C3	-2.81	106.22	109.54
5	M	956	MAN	C3-C4-C5	-2.75	105.41	110.20
5	M	957	MAN	O4-C4-C3	-2.73	104.18	110.34
4	M	944	BMA	C1-C2-C3	-2.69	106.36	109.54
4	M	945	XYP	C4B-C3B-C2B	-2.68	108.59	111.24
3	M	923	NAG	O3-C3-C2	-2.58	104.01	109.11
3	M	923	NAG	O6-C6-C5	-2.57	102.83	111.33
3	M	923	NAG	C4-C3-C2	-2.57	107.24	111.23
5	M	954	BMA	C2-C3-C4	-2.56	106.69	111.04
4	M	941	FUC	O3-C3-C4	-2.55	104.58	110.34
3	M	921	NAG	O3-C3-C2	-2.49	104.19	109.11
5	M	956	MAN	C6-C5-C4	-2.47	106.92	113.02
3	M	921	NAG	O4-C4-C5	-2.44	102.78	109.24
5	M	951	NAG	O5-C5-C6	-2.38	102.19	107.35
3	M	923	NAG	C3-C2-N2	-2.33	104.98	110.56
4	M	945	XYP	C5B-C4B-C3B	-2.32	106.80	109.54
4	M	942	NAG	C8-C7-N2	-2.31	111.69	116.11
5	M	956	MAN	O6-C6-C5	-2.31	103.71	111.33
5	M	953	NAG	O6-C6-C5	-2.30	103.74	111.33

Continued on next page...

Continued from previous page...

Mol	Chain	Res	Type	Atoms	Z	Observed(°)	Ideal(°)
4	M	943	NAG	C2-N2-C7	-2.29	120.10	123.04
5	M	955	XYP	O5B-C1B-C2B	-2.26	106.08	110.31
4	M	942	NAG	C4-C3-C2	-2.21	107.79	111.23
4	M	945	XYP	O2B-C2B-C1B	-2.19	104.81	109.21
4	M	945	XYP	O3B-C3B-C2B	-2.18	106.06	110.00
5	M	952	FUC	O4-C4-C3	-2.16	105.46	110.34
5	M	955	XYP	O4B-C4B-C3B	-2.13	105.84	110.12
4	M	945	XYP	O3B-C3B-C4B	-2.08	106.23	110.00
5	M	956	MAN	O2-C2-C3	-2.08	105.94	110.12
4	M	942	NAG	O7-C7-N2	2.31	126.58	121.86
5	M	953	NAG	O7-C7-C8	2.33	126.34	122.06
5	M	955	XYP	C5B-O5B-C1B	2.40	115.44	111.57
5	M	951	NAG	O7-C7-C8	2.54	126.73	122.06
5	M	951	NAG	C3-C2-N2	2.79	117.23	110.56
4	M	944	BMA	C2-C3-C4	2.79	115.78	111.04
4	M	944	BMA	C3-C4-C5	3.09	115.58	110.20
4	M	944	BMA	C1-O5-C5	3.20	116.31	112.25
5	M	956	MAN	O2-C2-C1	4.03	117.29	109.21
5	M	954	BMA	C3-C4-C5	4.73	118.44	110.20
5	M	956	MAN	C1-C2-C3	4.95	115.39	109.54
5	M	957	MAN	O6-C6-C5	5.04	127.99	111.33
5	M	957	MAN	C1-C2-C3	5.11	115.58	109.54
3	M	923	NAG	C3-C4-C5	6.04	120.73	110.20
5	M	957	MAN	O4-C4-C5	6.66	126.88	109.24
5	M	954	BMA	C6-C5-C4	8.44	133.83	113.02
5	M	954	BMA	O4-C4-C5	12.48	142.30	109.24
5	M	957	MAN	C6-C5-C4	16.16	152.87	113.02

There are no chirality outliers.

There are no torsion outliers.

There are no ring outliers.

5 monomers are involved in 28 short contacts:

Mol	Chain	Res	Type	Clashes	Symm-Clashes
3	M	921	NAG	5	0
4	M	942	NAG	3	0
5	M	951	NAG	4	0
5	M	954	BMA	8	0
5	M	957	MAN	13	0

5.6 Ligand geometry

Of 20 ligands modelled in this entry, 1 is monoatomic - leaving 19 for Mogul analysis.

In the following table, the Counts columns list the number of bonds (or angles) for which Mogul statistics could be retrieved, the number of bonds (or angles) that are observed in the model and the number of bonds (or angles) that are defined in the chemical component dictionary. The Link column lists molecule types, if any, to which the group is linked. The Z score for a bond length (or angle) is the number of standard deviations the observed value is removed from the expected value. A bond length (or angle) with $|Z| > 2$ is considered an outlier worth inspection. RMSZ is the root-mean-square of all Z scores of the bond lengths (or angles).

Mol	Type	Chain	Res	Link	Bond lengths			Bond angles		
					Counts	RMSZ	# $ Z > 2$	Counts	RMSZ	# $ Z > 2$
7	GOL	M	1502[A]	-	5,5,5	1.06	0	5,5,5	1.34	1 (20%)
7	GOL	M	1502[B]	-	5,5,5	0.96	0	5,5,5	2.73	2 (40%)
7	GOL	M	1503	-	5,5,5	0.67	0	5,5,5	1.21	1 (20%)
7	GOL	M	1504	-	5,5,5	0.64	0	5,5,5	0.64	0
8	SO4	M	1513	-	4,4,4	1.36	1 (25%)	6,6,6	0.73	0
8	SO4	M	1514	-	4,4,4	0.84	0	6,6,6	0.51	0
8	SO4	M	1515	-	4,4,4	1.21	0	6,6,6	1.52	1 (16%)
8	SO4	M	1516	-	4,4,4	0.37	0	6,6,6	0.55	0
8	SO4	M	1517	-	4,4,4	2.26	1 (25%)	6,6,6	2.74	2 (33%)
8	SO4	M	1518	-	4,4,4	1.29	0	6,6,6	0.96	0
8	SO4	M	1519	-	4,4,4	0.99	0	6,6,6	0.52	0
7	GOL	M	1534	-	5,5,5	0.81	0	5,5,5	1.08	0
2	NAG	M	901	1	14,14,15	1.09	2 (14%)	15,19,21	2.26	4 (26%)
2	NAG	M	911	1	14,14,15	1.24	1 (7%)	15,19,21	2.13	3 (20%)
2	NAG	M	931	1	14,14,15	1.71	3 (21%)	15,19,21	7.52	7 (46%)
2	NAG	M	961	1	14,14,15	1.16	1 (7%)	15,19,21	1.55	4 (26%)
2	NAG	M	971	1	14,14,15	1.21	1 (7%)	15,19,21	1.29	1 (6%)
2	NAG	M	991	1	14,14,15	1.27	1 (7%)	15,19,21	2.13	4 (26%)
6	NTZ	M	999	-	12,15,15	2.61	5 (41%)	12,22,22	2.55	6 (50%)

In the following table, the Chirals column lists the number of chiral outliers, the number of chiral centers analysed, the number of these observed in the model and the number defined in the chemical component dictionary. Similar counts are reported in the Torsion and Rings columns. '-' means no outliers of that kind were identified.

Mol	Type	Chain	Res	Link	Chirals	Torsions	Rings
7	GOL	M	1502[A]	-	-	0/4/4/4	0/0/0/0
7	GOL	M	1502[B]	-	-	0/4/4/4	0/0/0/0

Continued on next page...

Continued from previous page...

Mol	Type	Chain	Res	Link	Chirals	Torsions	Rings
7	GOL	M	1503	-	-	0/4/4/4	0/0/0/0
7	GOL	M	1504	-	-	0/4/4/4	0/0/0/0
8	SO4	M	1513	-	-	0/0/0/0	0/0/0/0
8	SO4	M	1514	-	-	0/0/0/0	0/0/0/0
8	SO4	M	1515	-	-	0/0/0/0	0/0/0/0
8	SO4	M	1516	-	-	0/0/0/0	0/0/0/0
8	SO4	M	1517	-	-	0/0/0/0	0/0/0/0
8	SO4	M	1518	-	-	0/0/0/0	0/0/0/0
8	SO4	M	1519	-	-	0/0/0/0	0/0/0/0
7	GOL	M	1534	-	-	0/4/4/4	0/0/0/0
2	NAG	M	901	1	-	0/6/23/26	0/1/1/1
2	NAG	M	911	1	-	0/6/23/26	0/1/1/1
2	NAG	M	931	1	-	0/6/23/26	0/1/1/1
2	NAG	M	961	1	-	0/6/23/26	0/1/1/1
2	NAG	M	971	1	-	0/6/23/26	0/1/1/1
2	NAG	M	991	1	-	0/6/23/26	0/1/1/1
6	NTZ	M	999	-	-	0/2/22/22	0/1/2/2

All (16) bond length outliers are listed below:

Mol	Chain	Res	Type	Atoms	Z	Observed(Å)	Ideal(Å)
6	M	999	NTZ	N21-N18	-4.79	1.27	1.34
2	M	971	NAG	O7-C7	-3.80	1.14	1.23
2	M	911	NAG	O7-C7	-3.77	1.14	1.23
2	M	931	NAG	O7-C7	-3.71	1.14	1.23
2	M	991	NAG	O7-C7	-3.70	1.14	1.23
2	M	961	NAG	O7-C7	-3.47	1.15	1.23
6	M	999	NTZ	C5-N1	-3.45	1.40	1.47
2	M	931	NAG	C2-N2	-3.07	1.40	1.46
2	M	901	NAG	O7-C7	-2.49	1.17	1.23
2	M	931	NAG	C8-C7	-2.16	1.46	1.50
8	M	1513	SO4	O3-S	-2.10	1.39	1.47
2	M	901	NAG	O5-C1	-2.09	1.40	1.43
6	M	999	NTZ	C4-C3	2.07	1.57	1.52
6	M	999	NTZ	N17-N1	2.16	1.38	1.34
8	M	1517	SO4	O2-S	4.25	1.61	1.47
6	M	999	NTZ	N17-N18	5.49	1.43	1.30

All (36) bond angle outliers are listed below:

Mol	Chain	Res	Type	Atoms	Z	Observed(°)	Ideal(°)
2	M	931	NAG	O7-C7-N2	-9.74	102.00	121.86

Continued on next page...

Continued from previous page...

Mol	Chain	Res	Type	Atoms	Z	Observed(°)	Ideal(°)
2	M	931	NAG	C1-O5-C5	-9.29	100.45	112.25
2	M	931	NAG	C4-C3-C2	-7.47	99.62	111.23
2	M	901	NAG	C1-O5-C5	-6.70	103.74	112.25
2	M	911	NAG	C1-O5-C5	-6.64	103.82	112.25
8	M	1517	SO4	O2-S-O1	-6.10	90.16	109.50
2	M	991	NAG	C4-C3-C2	-4.75	103.85	111.23
2	M	991	NAG	O3-C3-C2	-4.55	100.10	109.11
2	M	931	NAG	O7-C7-C8	-4.10	114.53	122.06
8	M	1515	SO4	O2-S-O1	-3.41	98.68	109.50
2	M	911	NAG	O3-C3-C2	-3.20	102.78	109.11
6	M	999	NTZ	N21-N18-N17	-2.92	106.57	110.09
2	M	911	NAG	C4-C3-C2	-2.88	106.76	111.23
2	M	901	NAG	O3-C3-C2	-2.84	103.48	109.11
2	M	961	NAG	O4-C4-C5	-2.68	102.15	109.24
2	M	991	NAG	C2-N2-C7	-2.64	119.64	123.04
6	M	999	NTZ	C3-C4-C5	-2.63	107.84	111.39
6	M	999	NTZ	C1-C2-C3	-2.59	108.04	113.17
2	M	991	NAG	C8-C7-N2	-2.57	111.18	116.11
2	M	961	NAG	O3-C3-C2	-2.49	104.18	109.11
2	M	971	NAG	O3-C3-C2	-2.30	104.56	109.11
2	M	901	NAG	C4-C3-C2	-2.22	107.77	111.23
6	M	999	NTZ	C4-C3-C2	-2.21	108.26	110.72
2	M	961	NAG	C4-C3-C2	-2.06	108.03	111.23
2	M	961	NAG	O6-C6-C5	-2.05	104.54	111.33
8	M	1517	SO4	O4-S-O3	2.10	117.53	108.98
2	M	901	NAG	C3-C4-C5	2.23	114.08	110.20
7	M	1503	GOL	O2-C2-C3	2.35	119.42	108.65
7	M	1502[B]	GOL	O2-C2-C1	2.61	120.61	108.65
7	M	1502[A]	GOL	O2-C2-C1	2.61	120.61	108.65
6	M	999	NTZ	C6-C5-C4	4.05	120.17	112.50
2	M	931	NAG	C3-C2-N2	5.13	122.85	110.56
6	M	999	NTZ	O2-C2-C1	5.17	117.47	109.97
7	M	1502[B]	GOL	O1-C1-C2	5.37	136.21	110.18
2	M	931	NAG	C8-C7-N2	14.25	143.38	116.11
2	M	931	NAG	C2-N2-C7	18.82	147.22	123.04

There are no chirality outliers.

There are no torsion outliers.

There are no ring outliers.

4 monomers are involved in 15 short contacts:

Mol	Chain	Res	Type	Clashes	Symm-Clashes
7	M	1503	GOL	1	0
2	M	901	NAG	4	0
2	M	911	NAG	3	0
2	M	931	NAG	7	0

5.7 Other polymers [i](#)

There are no such residues in this entry.

5.8 Polymer linkage issues [i](#)

There are no chain breaks in this entry.

6 Fit of model and data [i](#)

6.1 Protein, DNA and RNA chains [i](#)

In the following table, the column labelled ‘#RSRZ> 2’ contains the number (and percentage) of RSRZ outliers, followed by percent RSRZ outliers for the chain as percentile scores relative to all X-ray entries and entries of similar resolution. The OWAB column contains the minimum, median, 95th percentile and maximum values of the occupancy-weighted average B-factor per residue. The column labelled ‘Q< 0.9’ lists the number of (and percentage) of residues with an average occupancy less than 0.9.

Mol	Chain	Analysed	<RSRZ>	#RSRZ>2	OWAB(Å ²)	Q<0.9
1	M	499/501 (99%)	-0.05	8 (1%) 74 75	8, 11, 22, 47	0

All (8) RSRZ outliers are listed below:

Mol	Chain	Res	Type	RSRZ
1	M	376	ALA	8.1
1	M	3	GLU	4.3
1	M	379	THR	3.7
1	M	417	ASP	3.2
1	M	19	ALA	3.1
1	M	380	ASP	2.6
1	M	343	ASN	2.3
1	M	375	LYS	2.0

6.2 Non-standard residues in protein, DNA, RNA chains [i](#)

There are no non-standard protein/DNA/RNA residues in this entry.

6.3 Carbohydrates [i](#)

In the following table, the Atoms column lists the number of modelled atoms in the group and the number defined in the chemical component dictionary. LLDF column lists the quality of electron density of the group with respect to its neighbouring residues in protein, DNA or RNA chains. The B-factors column lists the minimum, median, 95th percentile and maximum values of B factors of atoms in the group. The column labelled ‘Q< 0.9’ lists the number of atoms with occupancy less than 0.9.

Mol	Type	Chain	Res	Atoms	RSCC	RSR	LLDF	B-factors(Å ²)	Q<0.9
4	NAG	M	942	14/15	0.94	0.09	3.49	15,17,19,20	0
3	NAG	M	923	14/15	0.68	0.31	3.09	32,37,43,45	0

Continued on next page...

Continued from previous page...

Mol	Type	Chain	Res	Atoms	RSCC	RSR	LLDF	B-factors(\AA^2)	Q<0.9
3	NAG	M	921	14/15	0.94	0.09	1.18	17,20,28,28	0
5	MAN	M	956	11/12	0.73	0.28	-	24,36,41,42	0
4	XYP	M	945	9/10	0.78	0.32	-	35,36,38,40	0
4	FUC	M	941	10/11	0.91	0.19	-	23,28,31,34	0
5	NAG	M	953	14/15	0.93	0.12	-	18,21,28,29	0
5	BMA	M	954	11/12	0.87	0.13	-	20,26,29,32	0
5	XYP	M	955	9/10	0.44	0.35	-	36,39,41,44	0
4	BMA	M	944	11/12	0.81	0.29	-	31,36,40,44	0
5	NAG	M	951	14/15	0.91	0.09	-	17,18,21,24	0
5	FUC	M	952	10/11	0.86	0.15	-	16,20,22,22	0
5	MAN	M	957	11/12	0.70	0.36	-	33,40,47,51	0
4	NAG	M	943	14/15	0.96	0.07	-	20,22,27,31	0

6.4 Ligands ⓘ

In the following table, the Atoms column lists the number of modelled atoms in the group and the number defined in the chemical component dictionary. LLDF column lists the quality of electron density of the group with respect to its neighbouring residues in protein, DNA or RNA chains. The B-factors column lists the minimum, median, 95th percentile and maximum values of B factors of atoms in the group. The column labelled 'Q< 0.9' lists the number of atoms with occupancy less than 0.9.

Mol	Type	Chain	Res	Atoms	RSCC	RSR	LLDF	B-factors(\AA^2)	Q<0.9
2	NAG	M	961	14/15	0.60	0.35	44.94	26,32,38,40	0
8	SO4	M	1515	5/5	0.96	0.15	17.41	15,17,19,22	5
7	GOL	M	1534	6/6	0.73	0.20	16.99	30,31,33,34	6
8	SO4	M	1513	5/5	0.98	0.14	11.77	17,19,25,27	5
2	NAG	M	931	14/15	0.68	0.30	8.87	30,39,46,46	0
7	GOL	M	1502[B]	6/6	0.87	0.15	8.30	10,13,14,15	2
7	GOL	M	1502[A]	6/6	0.87	0.15	8.30	10,12,14,15	2
6	NTZ	M	999	14/14	0.92	0.10	3.36	10,12,13,14	0
7	GOL	M	1503	6/6	0.95	0.09	2.38	12,16,20,26	6
2	NAG	M	901	14/15	0.82	0.17	1.12	27,31,34,36	0
8	SO4	M	1516	5/5	0.98	0.08	-	14,16,21,24	0
8	SO4	M	1517	5/5	0.84	0.22	-	24,26,28,28	5
7	GOL	M	1504	6/6	0.77	0.16	-	27,28,29,31	6
8	SO4	M	1519	5/5	0.82	0.30	-	30,31,31,32	5
8	SO4	M	1518	5/5	0.65	0.28	-	21,28,29,32	5
2	NAG	M	911	14/15	0.91	0.18	-	19,22,27,27	0
2	NAG	M	971	14/15	0.60	0.50	-	50,57,59,61	0
8	SO4	M	1514	5/5	0.95	0.16	-	17,22,26,27	5
2	NAG	M	991	14/15	0.76	0.33	-	28,34,48,51	0

Continued on next page...

Continued from previous page...

Mol	Type	Chain	Res	Atoms	RSCC	RSR	LLDF	B-factors(\AA^2)	Q<0.9
9	ZN	M	1520	1/1	1.00	0.04	-	8,8,8,8	1

6.5 Other polymers [i](#)

There are no such residues in this entry.