



Full wwPDB X-ray Structure Validation Report ⓘ

Feb 1, 2016 – 04:05 PM GMT

PDB ID : 4E7E
Title : E. cloacae C115D MurA in complex with UDP-glucose
Authors : Zhu, J.-Y.; Yang, Y.; Schonbrunn, E.
Deposited on : 2012-03-16
Resolution : 2.30 Å(reported)

This is a Full wwPDB X-ray Structure Validation Report for a publicly released PDB entry.
We welcome your comments at validation@mail.wwpdb.org
A user guide is available at
<http://wwpdb.org/validation/2016/XrayValidationReportHelp>
with specific help available everywhere you see the ⓘ symbol.

The following versions of software and data (see [references ⓘ](#)) were used in the production of this report:

MolProbity : 4.02b-467
Mogul : 1.7 (RC4), CSD as536be (2015)
Xtriage (Phenix) : 1.9-1692
EDS : rb-20026688
Percentile statistics : 20151230.v01 (using entries in the PDB archive December 30th 2015)
Refmac : 5.8.0135
CCP4 : 6.5.0
Ideal geometry (proteins) : Engh & Huber (2001)
Ideal geometry (DNA, RNA) : Parkinson et al. (1996)
Validation Pipeline (wwPDB-VP) : trunk26865

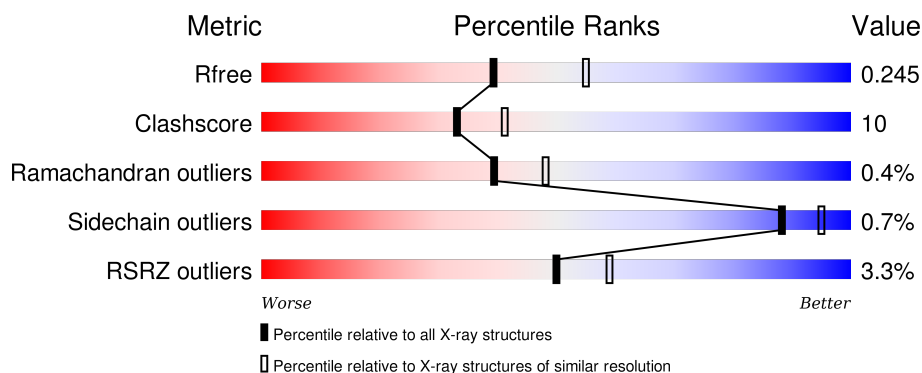
1 Overall quality at a glance

The following experimental techniques were used to determine the structure:

X-RAY DIFFRACTION

The reported resolution of this entry is 2.30 Å.

Percentile scores (ranging between 0-100) for global validation metrics of the entry are shown in the following graphic. The table shows the number of entries on which the scores are based.



Metric	Whole archive (#Entries)	Similar resolution (#Entries, resolution range(Å))
R_{free}	91344	3852 (2.30-2.30)
Clashscore	102246	4452 (2.30-2.30)
Ramachandran outliers	100387	4410 (2.30-2.30)
Sidechain outliers	100360	4409 (2.30-2.30)
RSRZ outliers	91569	3857 (2.30-2.30)

The table below summarises the geometric issues observed across the polymeric chains and their fit to the electron density. The red, orange, yellow and green segments on the lower bar indicate the fraction of residues that contain outliers for ≥ 3 , 2, 1 and 0 types of geometric quality criteria. A grey segment represents the fraction of residues that are not modelled. The numeric value for each fraction is indicated below the corresponding segment, with a dot representing fractions $\leq 5\%$. The upper red bar (where present) indicates the fraction of residues that have poor fit to the electron density. The numeric value is given above the bar.

Mol	Chain	Length	Quality of chain
1	A	419	<div> <div>4%</div> <div>81% 18% .</div> </div>
1	B	419	<div> <div>3%</div> <div>83% 17%</div> </div>
1	C	419	<div> <div>3%</div> <div>78% 21%</div> </div>
1	D	419	<div> <div>2%</div> <div>83% 16%</div> </div>

The following table lists non-polymeric compounds, carbohydrate monomers and non-standard

residues in protein, DNA, RNA chains that are outliers for geometric or electron-density-fit criteria:

Mol	Type	Chain	Res	Chirality	Geometry	Clashes	Electron density
2	EDO	B	501	-	-	-	X
2	EDO	C	501	-	-	-	X
2	EDO	D	501	-	-	-	X
2	EDO	D	502	-	-	-	X
2	EDO	D	504	-	-	-	X
2	EDO	D	505	-	-	-	X
2	EDO	D	506	-	-	-	X

2 Entry composition

There are 5 unique types of molecules in this entry. The entry contains 13403 atoms, of which 0 are hydrogens and 0 are deuteriums.

In the tables below, the ZeroOcc column contains the number of atoms modelled with zero occupancy, the AltConf column contains the number of residues with at least one atom in alternate conformation and the Trace column contains the number of residues modelled with at most 2 atoms.

- Molecule 1 is a protein called UDP-N-acetylglucosamine 1-carboxyvinyltransferase.

Mol	Chain	Residues	Atoms					ZeroOcc	AltConf	Trace
1	A	419	Total	C	N	O	S	0	0	0
			3144	1977	554	600	13			
1	B	419	Total	C	N	O	S	0	0	0
			3144	1977	554	600	13			
1	C	419	Total	C	N	O	S	0	0	0
			3145	1977	554	601	13			
1	D	419	Total	C	N	O	S	0	0	0
			3144	1977	554	600	13			

There are 8 discrepancies between the modelled and reference sequences:

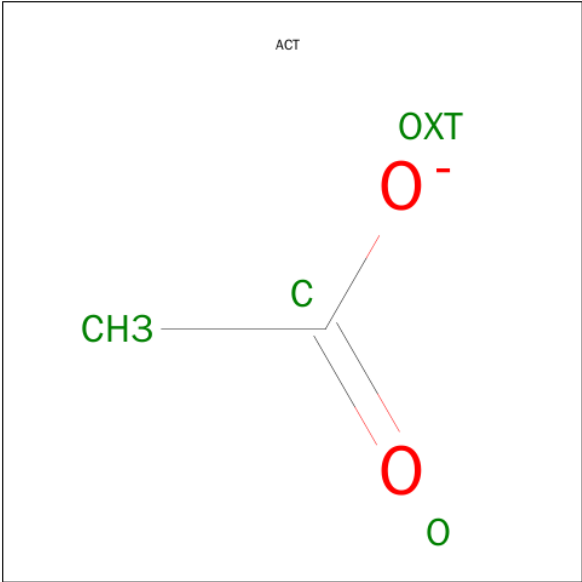
Chain	Residue	Modelled	Actual	Comment	Reference
A	67	IAS	ASN	SEE REMARK 999	UNP P33038
A	115	ASP	CYS	ENGINEERED MUTATION	UNP P33038
B	67	IAS	ASN	SEE REMARK 999	UNP P33038
B	115	ASP	CYS	ENGINEERED MUTATION	UNP P33038
C	67	IAS	ASN	SEE REMARK 999	UNP P33038
C	115	ASP	CYS	ENGINEERED MUTATION	UNP P33038
D	67	IAS	ASN	SEE REMARK 999	UNP P33038
D	115	ASP	CYS	ENGINEERED MUTATION	UNP P33038

- Molecule 2 is 1,2-ETHANEDIOL (three-letter code: EDO) (formula: C₂H₆O₂).



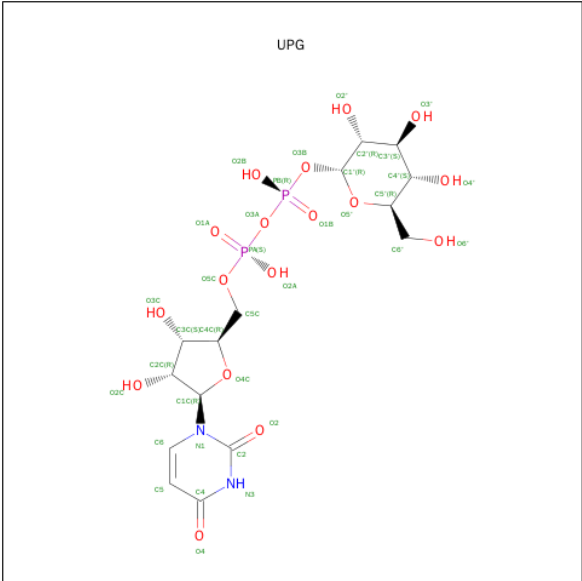
Mol	Chain	Residues	Atoms			ZeroOcc	AltConf
2	A	1	Total	C	O	0	0
			4	2	2		
2	B	1	Total	C	O	0	0
			4	2	2		
2	B	1	Total	C	O	0	0
			4	2	2		
2	C	1	Total	C	O	0	0
			4	2	2		
2	C	1	Total	C	O	0	0
			4	2	2		
2	D	1	Total	C	O	0	0
			4	2	2		
2	D	1	Total	C	O	0	0
			4	2	2		
2	D	1	Total	C	O	0	0
			4	2	2		
2	D	1	Total	C	O	0	0
			4	2	2		

- Molecule 3 is ACETATE ION (three-letter code: ACT) (formula: C₂H₃O₂).



Mol	Chain	Residues	Atoms			ZeroOcc	AltConf
3	A	1	Total	C	O	0	0
			4	2	2		
3	D	1	Total	C	O	0	0
			4	2	2		

- Molecule 4 is URIDINE-5'-DIPHOSPHATE-GLUCOSE (three-letter code: UPG) (formula: C₁₅H₂₄N₂O₁₇P₂).



Mol	Chain	Residues	Atoms				ZeroOcc	AltConf
4	A	1	Total	C	N	O	0	0
			36	15	2	17		

Continued on next page...

Continued from previous page...

Mol	Chain	Residues	Atoms					ZeroOcc	AltConf
4	D	1	Total	C	N	O	P	0	0
			36	15	2	17	2		

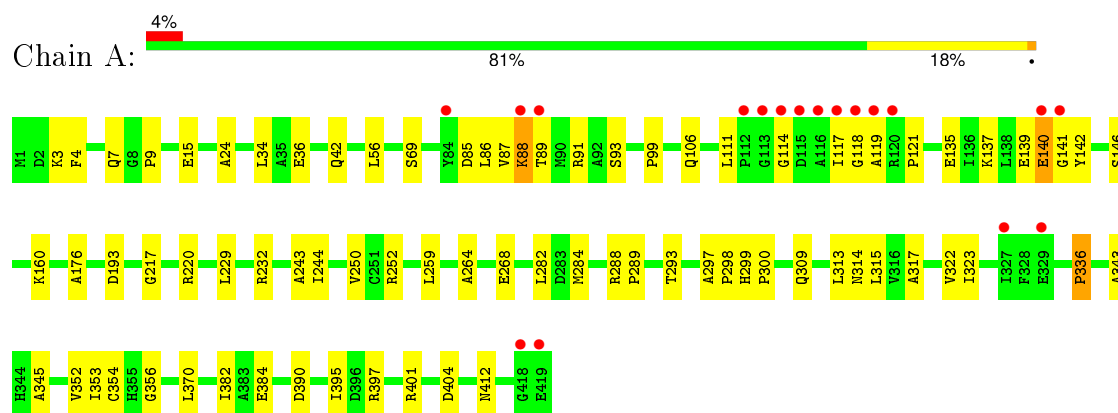
- Molecule 5 is water.

Mol	Chain	Residues	Atoms		ZeroOcc	AltConf
5	A	180	Total	O	0	0
			180	180		
5	B	168	Total	O	0	0
			168	168		
5	C	171	Total	O	0	0
			171	171		
5	D	183	Total	O	0	0
			183	183		

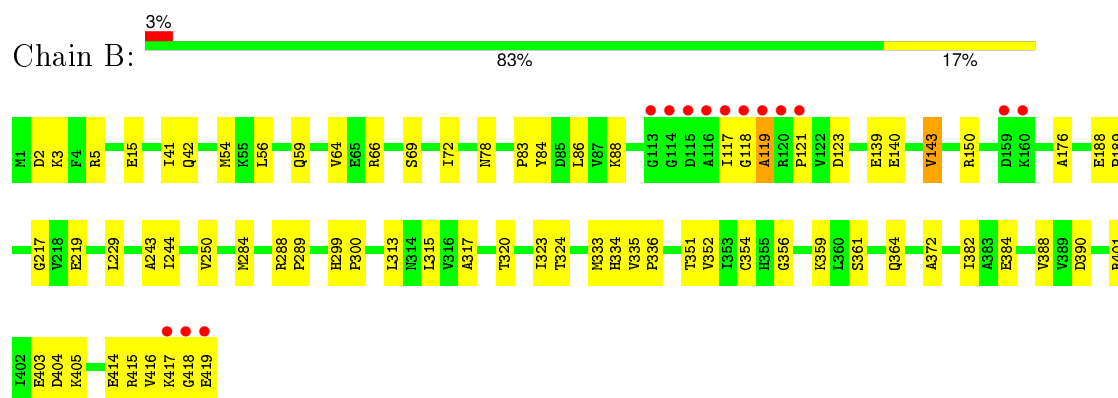
3 Residue-property plots [i](#)

These plots are drawn for all protein, RNA and DNA chains in the entry. The first graphic for a chain summarises the proportions of errors displayed in the second graphic. The second graphic shows the sequence view annotated by issues in geometry and electron density. Residues are color-coded according to the number of geometric quality criteria for which they contain at least one outlier: green = 0, yellow = 1, orange = 2 and red = 3 or more. A red dot above a residue indicates a poor fit to the electron density ($RSRZ > 2$). Stretches of 2 or more consecutive residues without any outlier are shown as a green connector. Residues present in the sample, but not in the model, are shown in grey.

- Molecule 1: UDP-N-acetylglucosamine 1-carboxyvinyltransferase

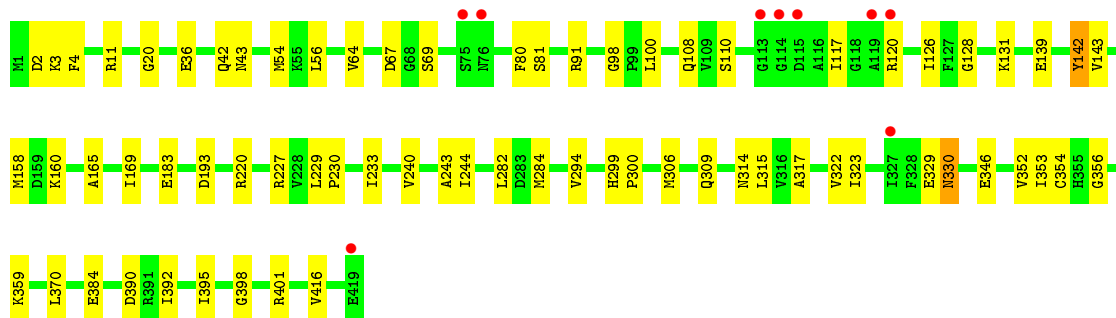
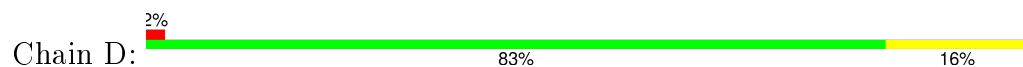


- Molecule 1: UDP-N-acetylglucosamine 1-carboxyvinyltransferase





- Molecule 1: UDP-N-acetylglucosamine 1-carboxyvinyltransferase



4 Data and refinement statistics

Property	Value	Source
Space group	P 21 21 21	Depositor
Cell constants a, b, c, α , β , γ	81.11Å 101.42Å 213.24Å 90.00° 90.00° 90.00°	Depositor
Resolution (Å)	19.92 – 2.30 19.92 – 2.30	Depositor EDS
% Data completeness (in resolution range)	99.7 (19.92-2.30) 99.8 (19.92-2.30)	Depositor EDS
R_{merge}	0.10	Depositor
R_{sym}	0.05	Depositor
$\langle I/\sigma(I) \rangle$ ¹	3.90 (at 2.30Å)	Xtriage
Refinement program	CNS 1.3	Depositor
R, R_{free}	0.198 , 0.246 0.198 , 0.245	Depositor DCC
R_{free} test set	1180 reflections (1.50%)	DCC
Wilson B-factor (Å ²)	26.4	Xtriage
Anisotropy	0.028	Xtriage
Bulk solvent k_{sol} (e/Å ³), B_{sol} (Å ²)	0.34 , 42.4	EDS
Estimated twinning fraction	No twinning to report.	Xtriage
L-test for twinning ²	$\langle L \rangle = 0.48$, $\langle L^2 \rangle = 0.31$	Xtriage
Outliers	0 of 78625 reflections	Xtriage
F_o, F_c correlation	0.94	EDS
Total number of atoms	13403	wwPDB-VP
Average B, all atoms (Å ²)	28.0	wwPDB-VP

Xtriage's analysis on translational NCS is as follows: *The largest off-origin peak in the Patterson function is 2.91% of the height of the origin peak. No significant pseudotranslation is detected.*

¹Intensities estimated from amplitudes.

²Theoretical values of $\langle |L| \rangle$, $\langle L^2 \rangle$ for acentric reflections are 0.5, 0.375 respectively for untwinned datasets, and 0.333, 0.2 for perfectly twinned datasets.

5 Model quality ⓘ

5.1 Standard geometry ⓘ

Bond lengths and bond angles in the following residue types are not validated in this section: UPG, EDO, IAS, ACT

The Z score for a bond length (or angle) is the number of standard deviations the observed value is removed from the expected value. A bond length (or angle) with $|Z| > 5$ is considered an outlier worth inspection. RMSZ is the root-mean-square of all Z scores of the bond lengths (or angles).

Mol	Chain	Bond lengths		Bond angles	
		RMSZ	# Z >5	RMSZ	# Z >5
1	A	0.53	1/3180 (0.0%)	0.89	0/4308
1	B	0.53	0/3180	0.91	1/4308 (0.0%)
1	C	0.53	0/3181	0.90	0/4308
1	D	0.56	1/3180 (0.0%)	0.90	0/4308
All	All	0.54	2/12721 (0.0%)	0.90	1/17232 (0.0%)

All (2) bond length outliers are listed below:

Mol	Chain	Res	Type	Atoms	Z	Observed(Å)	Ideal(Å)
1	A	309	GLN	CD-OE1	5.50	1.36	1.24
1	D	330	ASN	CG-OD1	5.27	1.35	1.24

All (1) bond angle outliers are listed below:

Mol	Chain	Res	Type	Atoms	Z	Observed(°)	Ideal(°)
1	B	143	VAL	N-CA-C	-5.77	95.42	111.00

There are no chirality outliers.

There are no planarity outliers.

5.2 Too-close contacts ⓘ

In the following table, the Non-H and H(model) columns list the number of non-hydrogen atoms and hydrogen atoms in the chain respectively. The H(added) column lists the number of hydrogen atoms added and optimized by MolProbity. The Clashes column lists the number of clashes within the asymmetric unit, whereas Symm-Clashes lists symmetry related clashes.

Mol	Chain	Non-H	H(model)	H(added)	Clashes	Symm-Clashes
1	A	3144	0	3215	75	0

Continued on next page...

Continued from previous page...

Mol	Chain	Non-H	H(model)	H(added)	Clashes	Symm-Clashes
1	B	3144	0	3215	61	0
1	C	3145	0	3215	75	0
1	D	3144	0	3215	62	0
2	A	4	0	6	2	0
2	B	8	0	12	0	0
2	C	8	0	12	3	0
2	D	24	0	36	4	0
3	A	4	0	3	1	0
3	D	4	0	3	0	0
4	A	36	0	22	1	0
4	D	36	0	22	0	0
5	A	180	0	0	3	0
5	B	168	0	0	3	0
5	C	171	0	0	6	0
5	D	183	0	0	2	0
All	All	13403	0	12976	265	0

The all-atom clashscore is defined as the number of clashes found per 1000 atoms (including hydrogen atoms). The all-atom clashscore for this structure is 10.

All (265) close contacts within the same asymmetric unit are listed below, sorted by their clash magnitude.

Atom-1	Atom-2	Interatomic distance (Å)	Clash overlap (Å)
1:A:139:GLU:HB3	1:A:142:TYR:CZ	1.63	1.34
1:A:139:GLU:HB3	1:A:142:TYR:CE2	1.70	1.24
1:B:59:GLN:OE1	1:B:86:LEU:HD21	1.37	1.20
1:A:139:GLU:CB	1:A:142:TYR:CZ	2.40	1.05
1:A:139:GLU:O	1:A:140:GLU:HB3	1.62	0.96
1:A:139:GLU:HB2	1:A:142:TYR:OH	1.63	0.96
1:A:142:TYR:HD2	5:A:687:HOH:O	1.47	0.96
1:D:42:GLN:HA	1:D:69:SER:HB3	1.48	0.95
1:A:139:GLU:CB	1:A:142:TYR:OH	2.13	0.95
1:D:233:ILE:HG23	1:D:306:MET:HE3	1.51	0.92
1:D:108:GLN:HG2	2:D:506:EDO:H22	1.51	0.92
1:B:42:GLN:HA	1:B:69:SER:HB3	1.50	0.92
1:D:401:ARG:HG3	1:D:401:ARG:HH11	1.36	0.90
1:B:15:GLU:HG2	1:B:250:VAL:HB	1.53	0.88
1:B:59:GLN:OE1	1:B:86:LEU:CD2	2.24	0.84
1:B:359:LYS:HZ2	1:B:384:GLU:HB2	1.46	0.80
1:B:359:LYS:NZ	1:B:384:GLU:HB2	1.97	0.80
1:D:233:ILE:HG23	1:D:306:MET:CE	2.13	0.78

Continued on next page...

Continued from previous page...

Atom-1	Atom-2	Interatomic distance (Å)	Clash overlap (Å)
1:C:233:ILE:HG23	1:C:306:MET:CE	2.15	0.77
1:A:91:ARG:HH11	1:A:91:ARG:HG3	1.51	0.76
1:B:5:ARG:NH2	1:B:414:GLU:OE2	2.20	0.74
1:B:54:MET:HE3	1:B:66:ARG:HB3	1.69	0.74
1:C:233:ILE:HG23	1:C:306:MET:HE2	1.70	0.73
1:C:233:ILE:HA	1:C:306:MET:HE3	1.72	0.72
1:A:88:LYS:HG3	1:A:89:THR:H	1.54	0.70
1:D:401:ARG:NH1	1:D:401:ARG:HG3	2.08	0.69
1:D:306:MET:HE2	1:D:309:GLN:NE2	2.07	0.69
1:A:193:ASP:CB	1:A:229:LEU:HD22	2.23	0.69
1:A:193:ASP:CG	1:A:229:LEU:HD22	2.14	0.68
1:C:334:HIS:HB3	1:C:372:ALA:HB1	1.76	0.67
1:C:317:ALA:O	1:C:356:GLY:HA3	1.95	0.67
1:C:42:GLN:HA	1:C:69:SER:HB3	1.78	0.66
1:D:98:GLY:HA3	5:D:668:HOH:O	1.94	0.66
1:A:137:LYS:HE2	1:C:137:LYS:HD3	1.77	0.65
1:B:121:PRO:HB3	1:B:123:ASP:OD2	1.96	0.65
1:C:335:VAL:HB	1:C:336:PRO:HD3	1.78	0.65
1:A:176:ALA:O	1:A:217:GLY:HA3	1.96	0.64
1:A:193:ASP:OD2	1:A:229:LEU:HD22	1.97	0.64
1:B:324:THR:HG23	1:B:351:THR:HG22	1.80	0.63
1:B:403:GLU:HG3	5:B:746:HOH:O	1.99	0.62
1:A:139:GLU:CB	1:A:142:TYR:CE2	2.64	0.62
1:D:323:ILE:HB	1:D:352:VAL:HG12	1.80	0.62
1:A:56:LEU:C	1:A:56:LEU:HD23	2.20	0.62
1:C:120:ARG:HG2	1:C:120:ARG:HH11	1.65	0.61
1:C:113:GLY:C	1:C:115:ASP:H	2.02	0.61
1:B:334:HIS:HB3	1:B:372:ALA:HB1	1.83	0.61
1:B:150:ARG:HH12	1:B:219:GLU:HA	1.65	0.61
1:A:135:GLU:HG2	1:A:146:SER:O	2.01	0.60
1:A:36:GLU:OE1	1:A:220:ARG:HD2	2.01	0.60
1:C:3:LYS:HG3	1:C:416:VAL:CG2	2.31	0.60
1:D:370:LEU:CD1	1:D:395:ILE:HA	2.32	0.60
1:A:336:PRO:HG2	1:B:333:MET:CE	2.31	0.60
1:A:160:LYS:NZ	1:A:160:LYS:HB2	2.17	0.60
1:A:336:PRO:HG2	1:B:333:MET:HE2	1.84	0.60
1:A:15:GLU:HG2	1:A:250:VAL:HB	1.83	0.59
1:D:306:MET:HE2	1:D:306:MET:HA	1.84	0.59
1:D:36:GLU:HB2	1:D:220:ARG:CZ	2.32	0.59
1:B:401:ARG:HH21	1:B:404:ASP:HB3	1.66	0.58
1:A:232:ARG:HB2	1:A:259:LEU:HD21	1.86	0.58

Continued on next page...

Continued from previous page...

Atom-1	Atom-2	Interatomic distance (Å)	Clash overlap (Å)
1:B:323:ILE:HB	1:B:352:VAL:CG1	2.34	0.58
1:B:418:GLY:O	1:B:419:GLU:C	2.41	0.58
1:B:64:VAL:HG22	1:B:72:ILE:CD1	2.34	0.58
1:B:401:ARG:HE	1:B:404:ASP:HB2	1.69	0.58
1:C:336:PRO:O	1:C:340:ARG:HG3	2.05	0.57
1:D:3:LYS:HE3	1:D:390:ASP:OD1	2.04	0.57
1:D:315:LEU:HD23	1:D:354:CYS:HB3	1.85	0.57
1:B:335:VAL:HB	1:B:336:PRO:HD3	1.87	0.57
1:C:10:THR:HG22	1:C:381:CYS:O	2.05	0.56
1:A:91:ARG:NH1	1:A:91:ARG:HG3	2.20	0.56
1:C:313:LEU:C	1:C:313:LEU:HD23	2.26	0.56
1:D:322:VAL:HG13	1:D:353:ILE:HD13	1.86	0.56
1:A:252:ARG:NH2	2:A:501:EDO:H12	2.21	0.56
1:B:315:LEU:HD23	1:B:354:CYS:HB3	1.87	0.56
1:D:2:ASP:HB3	1:D:392:ILE:HD11	1.87	0.56
1:B:54:MET:CE	1:B:66:ARG:HB3	2.36	0.56
1:B:361:SER:HB2	5:B:759:HOH:O	2.05	0.55
1:C:320:THR:HA	1:C:354:CYS:O	2.06	0.55
1:C:117:ILE:HD11	1:D:346:GLU:HG2	1.88	0.55
1:B:323:ILE:HB	1:B:352:VAL:HG13	1.89	0.54
1:B:83:PRO:HD2	1:B:86:LEU:HD11	1.89	0.54
1:C:193:ASP:CB	1:C:229:LEU:HD22	2.36	0.54
1:A:139:GLU:O	1:A:140:GLU:CB	2.42	0.54
1:A:86:LEU:C	1:A:88:LYS:H	2.10	0.54
1:A:3:LYS:HG2	1:A:390:ASP:OD1	2.07	0.54
1:D:56:LEU:O	1:D:56:LEU:HD23	2.07	0.54
1:A:88:LYS:HG3	1:A:89:THR:N	2.23	0.53
1:D:36:GLU:HB2	1:D:220:ARG:NH2	2.24	0.53
1:B:64:VAL:HG22	1:B:72:ILE:HD13	1.89	0.53
1:B:417:LYS:O	1:B:419:GLU:HG2	2.08	0.53
1:C:113:GLY:C	1:C:115:ASP:N	2.61	0.53
1:C:348:GLU:OE2	1:D:120:ARG:HD2	2.08	0.53
1:B:84:TYR:CE2	1:B:88:LYS:HD3	2.44	0.53
1:B:139:GLU:HG3	1:B:140:GLU:HG2	1.91	0.53
1:D:243:ALA:HA	1:D:284:MET:CG	2.39	0.53
1:B:299:HIS:CG	1:B:300:PRO:HA	2.44	0.53
1:D:11:ARG:HB3	5:D:741:HOH:O	2.10	0.52
1:B:401:ARG:HH21	1:B:404:ASP:CB	2.22	0.52
1:C:176:ALA:O	1:C:217:GLY:HA3	2.09	0.52
1:C:315:LEU:HD23	1:C:354:CYS:HB3	1.91	0.52
1:B:118:GLY:O	1:B:119:ALA:HB2	2.09	0.52

Continued on next page...

Continued from previous page...

Atom-1	Atom-2	Interatomic distance (Å)	Clash overlap (Å)
1:C:22:LYS:HD3	1:C:47:LEU:CD1	2.40	0.52
1:A:56:LEU:O	1:A:56:LEU:HD23	2.09	0.52
1:B:3:LYS:HG2	1:B:390:ASP:HA	1.92	0.51
1:B:288:ARG:HG3	1:B:289:PRO:HD2	1.92	0.51
3:A:502:ACT:H3	4:A:503:UPG:O1B	2.11	0.51
1:C:419:GLU:HG2	1:C:419:GLU:OXT	2.10	0.51
1:D:306:MET:CE	1:D:309:GLN:NE2	2.73	0.51
1:B:313:LEU:HD23	1:B:313:LEU:C	2.31	0.51
1:A:293:THR:OG1	1:D:183:GLU:HG2	2.10	0.50
1:D:126:ILE:HG12	1:D:143:VAL:HG21	1.93	0.50
1:A:160:LYS:HB2	1:A:160:LYS:HZ2	1.75	0.50
1:B:78:ASN:OD1	1:B:78:ASN:O	2.30	0.50
1:A:401:ARG:HH11	1:A:404:ASP:HB2	1.76	0.50
1:D:193:ASP:CB	1:D:229:LEU:HD22	2.41	0.50
1:C:416:VAL:HG23	1:C:416:VAL:O	2.12	0.50
1:C:193:ASP:CG	1:C:229:LEU:HD22	2.32	0.49
1:D:230:PRO:HD3	2:D:501:EDO:H12	1.94	0.49
1:C:303:PRO:HG2	1:C:306:MET:HB2	1.94	0.49
1:D:299:HIS:CG	1:D:300:PRO:HA	2.48	0.49
1:D:359:LYS:HD2	1:D:384:GLU:HB2	1.95	0.49
1:C:113:GLY:HA3	5:C:765:HOH:O	2.13	0.49
1:C:401:ARG:HG3	1:C:401:ARG:HH11	1.77	0.49
1:C:91:ARG:HB2	1:C:119:ALA:HB2	1.95	0.49
1:A:24:ALA:HB2	1:A:229:LEU:HD21	1.95	0.48
1:A:323:ILE:HB	1:A:352:VAL:HG12	1.95	0.48
1:D:110:SER:HB2	2:D:506:EDO:O1	2.13	0.48
1:D:139:GLU:HB2	1:D:142:TYR:CE2	2.48	0.48
1:C:314:ASN:HB3	1:C:354:CYS:HB2	1.95	0.48
1:A:297:ALA:HB1	1:A:298:PRO:CD	2.44	0.48
1:B:320:THR:HA	1:B:354:CYS:O	2.14	0.48
5:C:665:HOH:O	1:D:330:ASN:HB2	2.11	0.48
1:C:357:VAL:HG22	5:C:626:HOH:O	2.14	0.48
1:A:315:LEU:HD21	1:A:345:ALA:HB2	1.95	0.48
1:C:359:LYS:HD3	1:C:384:GLU:HB2	1.96	0.48
1:A:117:ILE:O	1:A:117:ILE:HG22	2.12	0.48
1:A:243:ALA:HA	1:A:284:MET:HG3	1.95	0.47
1:A:193:ASP:OD2	1:A:229:LEU:CD2	2.61	0.47
1:A:401:ARG:HG3	1:A:401:ARG:NH1	2.29	0.47
1:A:313:LEU:C	1:A:313:LEU:HD23	2.34	0.47
1:C:21:ALA:HB2	1:C:231:ASP:HA	1.96	0.47
1:D:54:MET:CE	1:D:64:VAL:HG12	2.45	0.47

Continued on next page...

Continued from previous page...

Atom-1	Atom-2	Interatomic distance (Å)	Clash overlap (Å)
1:A:401:ARG:NH1	1:A:404:ASP:HB2	2.29	0.47
1:C:288:ARG:HG3	1:C:289:PRO:HD2	1.96	0.47
1:C:22:LYS:HD3	1:C:47:LEU:HD13	1.97	0.47
1:D:20:GLY:HA3	1:D:43:ASN:O	2.15	0.47
1:C:3:LYS:HG3	1:C:416:VAL:HG23	1.96	0.47
1:C:84:TYR:HE1	1:C:112:PRO:HA	1.78	0.47
1:D:80:PHE:HD1	1:D:100:LEU:HD22	1.79	0.47
1:A:139:GLU:HG3	1:A:139:GLU:O	2.15	0.46
1:B:419:GLU:OE1	1:B:419:GLU:HA	2.15	0.46
1:A:243:ALA:HA	1:A:284:MET:CG	2.44	0.46
1:A:85:ASP:HB3	5:A:770:HOH:O	2.15	0.46
1:C:233:ILE:HG21	1:C:371:ARG:CZ	2.46	0.46
1:C:227:ARG:HD3	5:C:738:HOH:O	2.15	0.46
1:A:299:HIS:CG	1:A:300:PRO:HA	2.51	0.46
1:A:244:ILE:HD12	1:A:382:ILE:HD13	1.96	0.46
1:C:126:ILE:HG23	1:C:136:ILE:HG21	1.98	0.46
1:D:401:ARG:NH1	1:D:401:ARG:CG	2.76	0.46
1:B:419:GLU:CA	1:B:419:GLU:OE1	2.60	0.46
1:B:244:ILE:HD12	1:B:382:ILE:HD13	1.97	0.46
1:B:359:LYS:HZ1	1:B:384:GLU:HB2	1.79	0.46
1:D:4:PHE:CD1	1:D:392:ILE:HG21	2.51	0.46
1:C:401:ARG:HH11	1:C:404:ASP:HB2	1.80	0.46
1:D:128:GLY:HA3	1:D:169:ILE:HD11	1.98	0.46
1:B:289:PRO:HG2	1:B:317:ALA:HA	1.98	0.45
1:A:87:VAL:HA	1:A:93:SER:OG	2.15	0.45
1:D:193:ASP:CG	1:D:229:LEU:HD22	2.36	0.45
1:D:227:ARG:HE	2:D:501:EDO:C2	2.29	0.45
1:B:364:GLN:HG2	1:B:388:VAL:HB	1.99	0.45
1:C:282:LEU:HD23	1:C:282:LEU:C	2.37	0.45
1:C:212:ARG:HH11	2:C:501:EDO:C2	2.29	0.45
1:B:83:PRO:HD2	1:B:86:LEU:CD1	2.46	0.45
1:C:334:HIS:O	1:C:338:LEU:HG	2.17	0.45
1:A:252:ARG:HH22	2:A:501:EDO:H12	1.80	0.45
1:B:359:LYS:NZ	1:B:384:GLU:OE1	2.50	0.45
1:A:193:ASP:HB2	1:A:229:LEU:HD22	1.97	0.45
1:D:323:ILE:HB	1:D:352:VAL:CG1	2.45	0.45
1:C:3:LYS:HB3	1:C:390:ASP:HA	1.99	0.45
1:D:370:LEU:HD12	1:D:395:ILE:HA	1.98	0.45
1:C:212:ARG:NH1	2:C:501:EDO:H21	2.32	0.45
1:C:56:LEU:HD23	1:C:56:LEU:C	2.37	0.45
1:A:111:LEU:O	1:A:141:GLY:HA2	2.17	0.44

Continued on next page...

Continued from previous page...

Atom-1	Atom-2	Interatomic distance (Å)	Clash overlap (Å)
1:C:339:ILE:C	1:C:341:MET:H	2.18	0.44
1:B:143:VAL:HG13	1:B:143:VAL:O	2.18	0.44
1:D:67:IAS:CG	1:D:69:SER:N	2.79	0.44
1:D:306:MET:HE2	1:D:309:GLN:HE22	1.82	0.44
1:D:54:MET:HE3	1:D:64:VAL:HG12	1.99	0.44
1:B:416:VAL:O	1:B:416:VAL:HG23	2.17	0.44
1:C:325:GLU:O	1:C:350:ASN:ND2	2.51	0.44
1:A:137:LYS:HE3	1:A:137:LYS:HB2	1.69	0.44
1:D:370:LEU:HD21	1:D:398:GLY:HA3	1.99	0.44
1:B:176:ALA:O	1:B:217:GLY:HA3	2.18	0.44
1:A:315:LEU:HD22	1:A:343:ALA:HB1	2.00	0.44
1:C:85:ASP:O	1:C:88:LYS:HG2	2.18	0.44
1:A:139:GLU:HB2	1:A:142:TYR:HH	1.73	0.44
1:B:15:GLU:CG	1:B:250:VAL:HB	2.37	0.44
1:D:314:ASN:HB3	1:D:354:CYS:HB2	1.99	0.44
1:C:212:ARG:HH11	2:C:501:EDO:H21	1.83	0.43
1:C:295:ARG:HG2	1:C:324:THR:HB	2.00	0.43
1:A:24:ALA:CB	1:A:229:LEU:CD2	2.96	0.43
1:D:158:MET:HE1	1:D:165:ALA:HB3	2.01	0.43
1:B:41:ILE:O	1:B:69:SER:HB2	2.19	0.43
1:C:135:GLU:OE1	1:C:137:LYS:HE2	2.19	0.43
1:C:120:ARG:HG2	1:C:120:ARG:NH1	2.31	0.43
1:D:91:ARG:HH11	1:D:91:ARG:HG3	1.83	0.43
1:D:3:LYS:HG3	1:D:416:VAL:HG23	2.01	0.43
1:B:56:LEU:HD23	1:B:56:LEU:C	2.39	0.43
1:C:193:ASP:HB2	1:C:229:LEU:HD22	2.00	0.43
1:D:160:LYS:NZ	1:D:160:LYS:HB2	2.34	0.43
1:C:370:LEU:HD13	1:C:394:HIS:O	2.19	0.43
1:A:282:LEU:HD23	1:A:282:LEU:C	2.40	0.43
1:C:65:GLU:HB2	5:C:632:HOH:O	2.18	0.42
1:B:42:GLN:HA	1:B:69:SER:CB	2.37	0.42
1:C:419:GLU:CG	1:C:419:GLU:OXT	2.68	0.42
1:A:9:PRO:HD3	1:A:384:GLU:HA	2.01	0.42
1:B:2:ASP:OD2	1:B:415:ARG:HD3	2.19	0.42
1:A:56:LEU:HA	1:A:86:LEU:HD13	2.01	0.42
1:C:338:LEU:HD21	1:C:376:LEU:HD23	2.01	0.42
1:D:160:LYS:CB	1:D:160:LYS:NZ	2.82	0.42
1:A:114:GLY:HA3	1:C:131:LYS:NZ	2.34	0.42
1:D:317:ALA:O	1:D:356:GLY:HA3	2.19	0.42
1:B:317:ALA:O	1:B:356:GLY:HA3	2.19	0.42
1:A:34:LEU:HD21	1:A:99:PRO:HA	2.01	0.42

Continued on next page...

Continued from previous page...

Atom-1	Atom-2	Interatomic distance (Å)	Clash overlap (Å)
1:A:317:ALA:O	1:A:356:GLY:HA3	2.20	0.42
1:A:86:LEU:C	1:A:88:LYS:N	2.72	0.42
1:A:370:LEU:HD12	1:A:395:ILE:HA	2.02	0.42
1:D:56:LEU:HD23	1:D:56:LEU:C	2.40	0.42
1:D:131:LYS:HB3	1:D:131:LYS:HE3	1.83	0.42
1:C:7:GLN:HB2	1:C:412:ASN:HB3	2.02	0.42
1:A:322:VAL:HG13	1:A:353:ILE:HD13	2.01	0.42
1:C:81:SER:HB2	1:C:108:GLN:CG	2.50	0.42
1:C:144:LYS:HG2	1:C:145:ALA:N	2.35	0.42
1:A:232:ARG:HB2	1:A:259:LEU:CD2	2.50	0.41
1:A:4:PHE:HA	1:A:4:PHE:HD2	1.80	0.41
1:D:294:VAL:HB	1:D:323:ILE:HD13	2.02	0.41
1:C:120:ARG:N	1:C:121:PRO:HD2	2.35	0.41
1:B:405:LYS:HD2	5:B:735:HOH:O	2.18	0.41
1:C:4:PHE:CD2	1:C:392:ILE:HD13	2.55	0.41
1:C:346:GLU:CD	1:D:117:ILE:HG23	2.40	0.41
1:A:119:ALA:O	1:A:121:PRO:HD3	2.21	0.41
1:B:401:ARG:NH2	1:B:404:ASP:OD1	2.53	0.41
1:A:264:ALA:O	1:A:268:GLU:HG3	2.20	0.41
1:D:243:ALA:HA	1:D:284:MET:HG3	2.01	0.41
1:C:233:ILE:CG2	1:C:306:MET:CE	2.93	0.41
1:A:252:ARG:HD2	5:A:699:HOH:O	2.20	0.41
1:D:81:SER:HB3	1:D:108:GLN:HB3	2.03	0.41
1:A:7:GLN:HB2	1:A:412:ASN:CG	2.42	0.41
1:C:220:ARG:NH1	5:C:689:HOH:O	2.53	0.41
1:B:188:GLU:HA	1:B:189:PRO:HD3	1.95	0.41
1:C:80:PHE:CD2	1:C:106:GLN:NE2	2.89	0.41
1:C:401:ARG:HD2	1:C:404:ASP:OD1	2.20	0.41
1:A:336:PRO:HG2	1:B:333:MET:HE1	2.03	0.40
1:C:22:LYS:HD3	1:C:47:LEU:HD12	2.03	0.40
1:C:401:ARG:HG3	1:C:401:ARG:NH1	2.36	0.40
1:A:288:ARG:CG	1:A:289:PRO:HD2	2.51	0.40
1:C:11:ARG:NE	1:C:245:SER:O	2.55	0.40
1:D:282:LEU:HD23	1:D:282:LEU:C	2.42	0.40
1:B:243:ALA:HA	1:B:284:MET:CG	2.52	0.40
1:A:42:GLN:HB3	1:A:69:SER:OG	2.22	0.40
1:A:314:ASN:HB3	1:A:354:CYS:HB2	2.03	0.40
1:C:299:HIS:CG	1:C:300:PRO:HA	2.57	0.40
1:B:288:ARG:CG	1:B:289:PRO:HD2	2.52	0.40
1:D:142:TYR:C	1:D:142:TYR:CD1	2.94	0.40
1:C:243:ALA:HA	1:C:284:MET:CG	2.52	0.40

Continued on next page...

Continued from previous page...

Atom-1	Atom-2	Interatomic distance (Å)	Clash overlap (Å)
1:D:240:VAL:O	1:D:244:ILE:HG12	2.21	0.40

There are no symmetry-related clashes.

5.3 Torsion angles [i](#)

5.3.1 Protein backbone [i](#)

In the following table, the Percentiles column shows the percent Ramachandran outliers of the chain as a percentile score with respect to all X-ray entries followed by that with respect to entries of similar resolution.

The Analysed column shows the number of residues for which the backbone conformation was analysed, and the total number of residues.

Mol	Chain	Analysed	Favoured	Allowed	Outliers	Percentiles	
1	A	415/419 (99%)	395 (95%)	17 (4%)	3 (1%)	26	31
1	B	415/419 (99%)	404 (97%)	9 (2%)	2 (0%)	34	41
1	C	415/419 (99%)	388 (94%)	25 (6%)	2 (0%)	34	41
1	D	415/419 (99%)	403 (97%)	12 (3%)	0	100	100
All	All	1660/1676 (99%)	1590 (96%)	63 (4%)	7 (0%)	39	48

All (7) Ramachandran outliers are listed below:

Mol	Chain	Res	Type
1	C	120	ARG
1	A	140	GLU
1	B	119	ALA
1	A	88	LYS
1	A	118	GLY
1	B	117	ILE
1	C	118	GLY

5.3.2 Protein sidechains [i](#)

In the following table, the Percentiles column shows the percent sidechain outliers of the chain as a percentile score with respect to all X-ray entries followed by that with respect to entries of similar resolution.

The Analysed column shows the number of residues for which the sidechain conformation was analysed, and the total number of residues.

Mol	Chain	Analysed	Rotameric	Outliers	Percentiles	
1	A	329/329 (100%)	326 (99%)	3 (1%)	84	93
1	B	329/329 (100%)	328 (100%)	1 (0%)	94	98
1	C	329/329 (100%)	326 (99%)	3 (1%)	84	93
1	D	329/329 (100%)	327 (99%)	2 (1%)	90	96
All	All	1316/1316 (100%)	1307 (99%)	9 (1%)	88	95

All (9) residues with a non-rotameric sidechain are listed below:

Mol	Chain	Res	Type
1	A	106	GLN
1	A	336	PRO
1	A	397	ARG
1	B	229	LEU
1	C	91	ARG
1	C	103	ARG
1	C	159	ASP
1	D	142	TYR
1	D	329	GLU

Some sidechains can be flipped to improve hydrogen bonding and reduce clashes. All (1) such sidechains are listed below:

Mol	Chain	Res	Type
1	B	78	ASN

5.3.3 RNA ⓘ

There are no RNA molecules in this entry.

5.4 Non-standard residues in protein, DNA, RNA chains ⓘ

4 non-standard protein/DNA/RNA residues are modelled in this entry.

In the following table, the Counts columns list the number of bonds (or angles) for which Mogul statistics could be retrieved, the number of bonds (or angles) that are observed in the model and the number of bonds (or angles) that are defined in the chemical component dictionary. The Link column lists molecule types, if any, to which the group is linked. The Z score for a bond length (or angle) is the number of standard deviations the observed value is removed from the expected

value. A bond length (or angle) with $|Z| > 2$ is considered an outlier worth inspection. RMSZ is the root-mean-square of all Z scores of the bond lengths (or angles).

Mol	Type	Chain	Res	Link	Bond lengths			Bond angles		
					Counts	RMSZ	$\# Z > 2$	Counts	RMSZ	$\# Z > 2$
1	IAS	A	67	1	4,7,8	0.61	0	1,8,10	1.30	0
1	IAS	B	67	1	4,7,8	0.83	0	1,8,10	1.12	0
1	IAS	C	67	1	4,7,8	0.66	0	1,8,10	1.32	0
1	IAS	D	67	1	4,7,8	0.72	0	1,8,10	1.11	0

In the following table, the Chirals column lists the number of chiral outliers, the number of chiral centers analysed, the number of these observed in the model and the number defined in the chemical component dictionary. Similar counts are reported in the Torsion and Rings columns. '-' means no outliers of that kind were identified.

Mol	Type	Chain	Res	Link	Chirals	Torsions	Rings
1	IAS	A	67	1	-	0/3/7/8	0/0/0/0
1	IAS	B	67	1	-	0/3/7/8	0/0/0/0
1	IAS	C	67	1	-	0/3/7/8	0/0/0/0
1	IAS	D	67	1	-	0/3/7/8	0/0/0/0

There are no bond length outliers.

There are no bond angle outliers.

There are no chirality outliers.

There are no torsion outliers.

There are no ring outliers.

1 monomer is involved in 1 short contact:

Mol	Chain	Res	Type	Clashes	Symm-Clashes
1	D	67	IAS	1	0

5.5 Carbohydrates

There are no carbohydrates in this entry.

5.6 Ligand geometry

15 ligands are modelled in this entry.

In the following table, the Counts columns list the number of bonds (or angles) for which Mogul statistics could be retrieved, the number of bonds (or angles) that are observed in the model and the number of bonds (or angles) that are defined in the chemical component dictionary. The Link

column lists molecule types, if any, to which the group is linked. The Z score for a bond length (or angle) is the number of standard deviations the observed value is removed from the expected value. A bond length (or angle) with $|Z| > 2$ is considered an outlier worth inspection. RMSZ is the root-mean-square of all Z scores of the bond lengths (or angles).

Mol	Type	Chain	Res	Link	Bond lengths			Bond angles		
					Counts	RMSZ	$\# Z > 2$	Counts	RMSZ	$\# Z > 2$
2	EDO	A	501	-	3,3,3	0.54	0	2,2,2	0.36	0
3	ACT	A	502	-	1,3,3	2.48	1 (100%)	0,3,3	0.00	-
4	UPG	A	503	-	29,38,38	1.46	4 (13%)	43,58,58	2.49	7 (16%)
2	EDO	B	501	-	3,3,3	0.60	0	2,2,2	0.38	0
2	EDO	B	502	-	3,3,3	0.54	0	2,2,2	0.37	0
2	EDO	C	501	-	3,3,3	0.54	0	2,2,2	0.39	0
2	EDO	C	502	-	3,3,3	0.47	0	2,2,2	0.43	0
2	EDO	D	501	-	3,3,3	0.65	0	2,2,2	0.35	0
2	EDO	D	502	-	3,3,3	0.58	0	2,2,2	0.35	0
2	EDO	D	503	-	3,3,3	0.52	0	2,2,2	0.40	0
2	EDO	D	504	-	3,3,3	0.53	0	2,2,2	0.39	0
2	EDO	D	505	-	3,3,3	0.65	0	2,2,2	0.29	0
2	EDO	D	506	-	3,3,3	0.47	0	2,2,2	0.38	0
3	ACT	D	507	-	1,3,3	2.53	1 (100%)	0,3,3	0.00	-
4	UPG	D	508	-	29,38,38	1.51	4 (13%)	43,58,58	2.51	6 (13%)

In the following table, the Chirals column lists the number of chiral outliers, the number of chiral centers analysed, the number of these observed in the model and the number defined in the chemical component dictionary. Similar counts are reported in the Torsion and Rings columns. '-' means no outliers of that kind were identified.

Mol	Type	Chain	Res	Link	Chirals	Torsions	Rings
2	EDO	A	501	-	-	0/1/1/1	0/0/0/0
3	ACT	A	502	-	-	0/0/0/0	0/0/0/0
4	UPG	A	503	-	-	0/19/59/59	0/3/3/3
2	EDO	B	501	-	-	0/1/1/1	0/0/0/0
2	EDO	B	502	-	-	0/1/1/1	0/0/0/0
2	EDO	C	501	-	-	0/1/1/1	0/0/0/0
2	EDO	C	502	-	-	0/1/1/1	0/0/0/0
2	EDO	D	501	-	-	0/1/1/1	0/0/0/0
2	EDO	D	502	-	-	0/1/1/1	0/0/0/0
2	EDO	D	503	-	-	0/1/1/1	0/0/0/0
2	EDO	D	504	-	-	0/1/1/1	0/0/0/0
2	EDO	D	505	-	-	0/1/1/1	0/0/0/0
2	EDO	D	506	-	-	0/1/1/1	0/0/0/0
3	ACT	D	507	-	-	0/0/0/0	0/0/0/0
4	UPG	D	508	-	-	0/19/59/59	0/3/3/3

All (10) bond length outliers are listed below:

Mol	Chain	Res	Type	Atoms	Z	Observed(Å)	Ideal(Å)
4	D	508	UPG	C4-N3	2.01	1.36	1.33
4	D	508	UPG	O5'-C1'	2.12	1.47	1.41
4	A	503	UPG	O5'-C1'	2.20	1.47	1.41
4	A	503	UPG	C4-N3	2.28	1.37	1.33
3	A	502	ACT	CH3-C	2.48	1.52	1.48
3	D	507	ACT	CH3-C	2.53	1.52	1.48
4	A	503	UPG	C6-N1	3.40	1.40	1.35
4	D	508	UPG	C6-N1	3.48	1.40	1.35
4	A	503	UPG	O4C-C1C	3.69	1.45	1.41
4	D	508	UPG	O4C-C1C	4.71	1.47	1.41

All (13) bond angle outliers are listed below:

Mol	Chain	Res	Type	Atoms	Z	Observed(°)	Ideal(°)
4	A	503	UPG	PB-O3A-PA	-8.63	108.49	132.73
4	D	508	UPG	PB-O3A-PA	-7.70	111.11	132.73
4	A	503	UPG	O5C-PA-O1A	-7.25	81.49	109.62
4	D	508	UPG	O5C-PA-O1A	-7.17	81.80	109.62
4	D	508	UPG	O3A-PA-O5C	-6.97	84.44	102.94
4	A	503	UPG	O3A-PA-O5C	-6.31	86.20	102.94
4	A	503	UPG	O2A-PA-O5C	-4.40	86.28	108.46
4	D	508	UPG	O2A-PA-O5C	-4.02	88.19	108.46
4	A	503	UPG	O2A-PA-O1A	2.10	123.93	112.53
4	A	503	UPG	O2A-PA-O3A	2.57	116.76	105.09
4	D	508	UPG	O2A-PA-O3A	2.77	117.64	105.09
4	A	503	UPG	C4-N3-C2	6.79	120.87	114.14
4	D	508	UPG	C4-N3-C2	7.25	121.32	114.14

There are no chirality outliers.

There are no torsion outliers.

There are no ring outliers.

6 monomers are involved in 10 short contacts:

Mol	Chain	Res	Type	Clashes	Symm-Clashes
2	A	501	EDO	2	0
3	A	502	ACT	1	0
4	A	503	UPG	1	0
2	C	501	EDO	3	0
2	D	501	EDO	2	0
2	D	506	EDO	2	0

5.7 Other polymers [i](#)

There are no such residues in this entry.

5.8 Polymer linkage issues [i](#)

There are no chain breaks in this entry.

6 Fit of model and data ⓘ

6.1 Protein, DNA and RNA chains ⓘ

In the following table, the column labelled ‘#RSRZ> 2’ contains the number (and percentage) of RSRZ outliers, followed by percent RSRZ outliers for the chain as percentile scores relative to all X-ray entries and entries of similar resolution. The OWAB column contains the minimum, median, 95th percentile and maximum values of the occupancy-weighted average B-factor per residue. The column labelled ‘Q< 0.9’ lists the number of (and percentage) of residues with an average occupancy less than 0.9.

Mol	Chain	Analysed	<RSRZ>	#RSRZ>2		OWAB(Å ²)	Q<0.9
1	A	418/419 (99%)	-0.04	18 (4%)	39 48	14, 25, 50, 87	0
1	B	418/419 (99%)	-0.11	14 (3%)	50 59	14, 25, 44, 87	0
1	C	418/419 (99%)	0.02	14 (3%)	50 59	13, 26, 52, 91	0
1	D	418/419 (99%)	-0.25	9 (2%)	65 73	14, 25, 42, 61	0
All	All	1672/1676 (99%)	-0.09	55 (3%)	50 59	13, 25, 48, 91	0

All (55) RSRZ outliers are listed below:

Mol	Chain	Res	Type	RSRZ
1	A	116	ALA	12.1
1	A	117	ILE	11.7
1	C	117	ILE	11.6
1	A	118	GLY	10.9
1	B	117	ILE	10.8
1	B	120	ARG	10.0
1	B	116	ALA	9.6
1	C	116	ALA	9.4
1	B	119	ALA	8.5
1	C	419	GLU	7.9
1	C	119	ALA	7.9
1	B	118	GLY	7.5
1	C	120	ARG	7.1
1	C	115	ASP	6.8
1	C	118	GLY	6.7
1	B	115	ASP	6.2
1	A	418	GLY	5.9
1	B	418	GLY	5.6
1	B	419	GLU	5.6
1	C	417	LYS	4.2
1	C	328	PHE	4.2

Continued on next page...

Continued from previous page...

Mol	Chain	Res	Type	RSRZ
1	A	419	GLU	4.2
1	D	419	GLU	4.0
1	C	418	GLY	4.0
1	A	115	ASP	3.9
1	A	114	GLY	3.6
1	B	417	LYS	3.6
1	C	121	PRO	3.6
1	B	113	GLY	3.6
1	D	114	GLY	3.5
1	A	89	THR	3.5
1	C	1	MET	3.3
1	A	141	GLY	3.3
1	A	119	ALA	3.2
1	C	114	GLY	3.2
1	D	119	ALA	3.0
1	A	329	GLU	3.0
1	B	114	GLY	3.0
1	A	120	ARG	3.0
1	C	113	GLY	2.7
1	B	159	ASP	2.7
1	A	113	GLY	2.7
1	A	88	LYS	2.7
1	D	120	ARG	2.6
1	A	327	ILE	2.6
1	D	113	GLY	2.4
1	D	115	ASP	2.4
1	A	112	PRO	2.4
1	B	121	PRO	2.4
1	D	76	ASN	2.3
1	A	84	TYR	2.2
1	B	160	LYS	2.2
1	A	140	GLU	2.2
1	D	75	SER	2.1
1	D	327	ILE	2.1

6.2 Non-standard residues in protein, DNA, RNA chains ⓘ

In the following table, the Atoms column lists the number of modelled atoms in the group and the number defined in the chemical component dictionary. LLDF column lists the quality of electron density of the group with respect to its neighbouring residues in protein, DNA or RNA chains. The B-factors column lists the minimum, median, 95th percentile and maximum values of B factors of atoms in the group. The column labelled 'Q < 0.9' lists the number of atoms with occupancy

less than 0.9.

Mol	Type	Chain	Res	Atoms	RSCC	RSR	LLDF	B-factors(\AA^2)	Q<0.9
1	IAS	B	67	8/9	0.86	0.18	-	37,37,38,40	0
1	IAS	D	67	8/9	0.91	0.15	-	34,36,38,39	0
1	IAS	A	67	8/9	0.90	0.17	-	33,35,36,38	0
1	IAS	C	67	8/9	0.94	0.10	-	19,23,26,27	0

6.3 Carbohydrates [i](#)

There are no carbohydrates in this entry.

6.4 Ligands [i](#)

In the following table, the Atoms column lists the number of modelled atoms in the group and the number defined in the chemical component dictionary. LLDF column lists the quality of electron density of the group with respect to its neighbouring residues in protein, DNA or RNA chains. The B-factors column lists the minimum, median, 95th percentile and maximum values of B factors of atoms in the group. The column labelled 'Q< 0.9' lists the number of atoms with occupancy less than 0.9.

Mol	Type	Chain	Res	Atoms	RSCC	RSR	LLDF	B-factors(\AA^2)	Q<0.9
2	EDO	B	501	4/4	0.70	0.35	16.74	55,55,56,56	0
2	EDO	D	506	4/4	0.78	0.35	15.99	60,61,61,62	0
2	EDO	D	501	4/4	0.78	0.25	9.44	45,45,46,47	0
2	EDO	D	502	4/4	0.67	0.29	8.61	51,53,54,54	0
2	EDO	C	501	4/4	0.93	0.19	3.41	26,29,31,31	0
2	EDO	D	504	4/4	0.81	0.32	3.03	55,57,57,57	0
2	EDO	D	505	4/4	0.77	0.27	2.95	51,51,51,52	0
4	UPG	A	503	36/36	0.76	0.28	1.62	69,79,91,91	0
4	UPG	D	508	36/36	0.91	0.20	1.02	33,42,61,62	0
2	EDO	C	502	4/4	0.82	0.25	0.91	45,46,47,47	0
2	EDO	D	503	4/4	0.92	0.13	0.56	34,35,37,37	0
3	ACT	A	502	4/4	0.84	0.13	0.46	41,41,42,43	0
2	EDO	B	502	4/4	0.81	0.38	-	56,56,56,56	0
3	ACT	D	507	4/4	0.73	0.24	-	51,52,52,53	0
2	EDO	A	501	4/4	0.80	0.19	-	54,54,55,56	0

6.5 Other polymers [i](#)

There are no such residues in this entry.