



# wwPDB X-ray Structure Validation Summary Report ⓘ

Feb 1, 2016 – 01:46 AM GMT

PDB ID : 2E9W  
Title : Crystal structure of the extracellular domain of Kit in complex with stem cell factor (SCF)  
Authors : Yuzawa, S.; Opatowsky, Y.; Zhang, Z.; Mandiyan, V.; Lax, I.; Schlessinger, J.  
Deposited on : 2007-01-27  
Resolution : 3.50 Å(reported)

This is a wwPDB X-ray Structure Validation Summary Report for a publicly released PDB entry.  
We welcome your comments at [validation@mail.wwpdb.org](mailto:validation@mail.wwpdb.org)  
A user guide is available at  
<http://wwpdb.org/validation/2016/XrayValidationReportHelp>  
with specific help available everywhere you see the ⓘ symbol.

---

The following versions of software and data (see [references ⓘ](#)) were used in the production of this report:

MolProbity : 4.02b-467  
Mogul : 1.7 (RC4), CSD as536be (2015)  
Xtriage (Phenix) : 1.9-1692  
EDS : rb-20026688  
Percentile statistics : 20151230.v01 (using entries in the PDB archive December 30th 2015)  
Refmac : 5.8.0135  
CCP4 : 6.5.0  
Ideal geometry (proteins) : Engh & Huber (2001)  
Ideal geometry (DNA, RNA) : Parkinson et al. (1996)  
Validation Pipeline (wwPDB-VP) : trunk26865

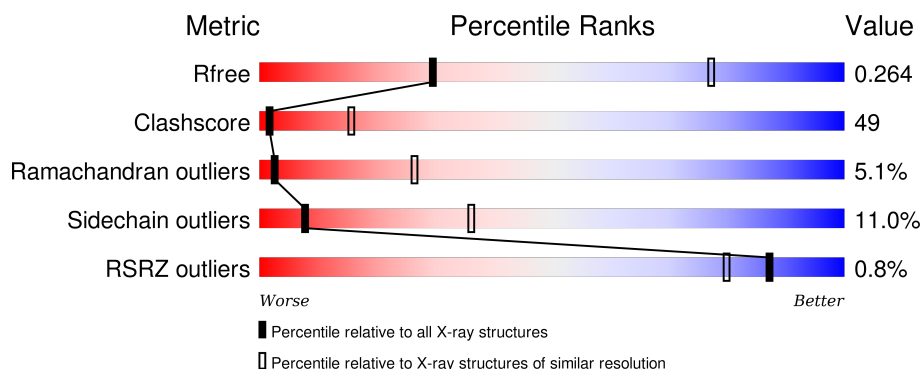
# 1 Overall quality at a glance ⓘ

The following experimental techniques were used to determine the structure:

## *X-RAY DIFFRACTION*

The reported resolution of this entry is 3.50 Å.

Percentile scores (ranging between 0-100) for global validation metrics of the entry are shown in the following graphic. The table shows the number of entries on which the scores are based.



Metric	Whole archive (#Entries)	Similar resolution (#Entries, resolution range(Å))
$R_{free}$	91344	1051 (3.60-3.40)
Clashscore	102246	1157 (3.60-3.40)
Ramachandran outliers	100387	1120 (3.60-3.40)
Sidechain outliers	100360	1121 (3.60-3.40)
RSRZ outliers	91569	1058 (3.60-3.40)

The table below summarises the geometric issues observed across the polymeric chains and their fit to the electron density. The red, orange, yellow and green segments on the lower bar indicate the fraction of residues that contain outliers for  $\geq 3$ , 2, 1 and 0 types of geometric quality criteria. A grey segment represents the fraction of residues that are not modelled. The numeric value for each fraction is indicated below the corresponding segment, with a dot representing fractions  $\leq 5\%$ . The upper red bar (where present) indicates the fraction of residues that have poor fit to the electron density. The numeric value is given above the bar.

Mol	Chain	Length	Quality of chain
1	A	489	<div> <div>%</div> <div> <div></div> <div>41%</div> <div>46%</div> <div>9%</div> <div>••</div> </div> </div>
1	B	489	<div> <div>%</div> <div> <div></div> <div>46%</div> <div>41%</div> <div>8%</div> <div>•</div> </div> </div>
2	C	141	<div> <div></div> <div> <div>30%</div> <div>52%</div> <div>11%</div> <div>6%</div> </div> </div>
2	D	141	<div> <div>%</div> <div> <div></div> <div>26%</div> <div>52%</div> <div>12%</div> <div>•</div> <div>9%</div> </div> </div>

## 2 Entry composition

There are 3 unique types of molecules in this entry. The entry contains 9168 atoms, of which 0 are hydrogens and 0 are deuteriums.

In the tables below, the ZeroOcc column contains the number of atoms modelled with zero occupancy, the AltConf column contains the number of residues with at least one atom in alternate conformation and the Trace column contains the number of residues modelled with at most 2 atoms.

- Molecule 1 is a protein called Mast/stem cell growth factor receptor.

Mol	Chain	Residues	Atoms					ZeroOcc	AltConf	Trace
1	A	468	Total	C	N	O	S	0	0	0
			3548	2244	598	692	14			
1	B	469	Total	C	N	O	S	0	0	0
			3514	2220	594	687	13			

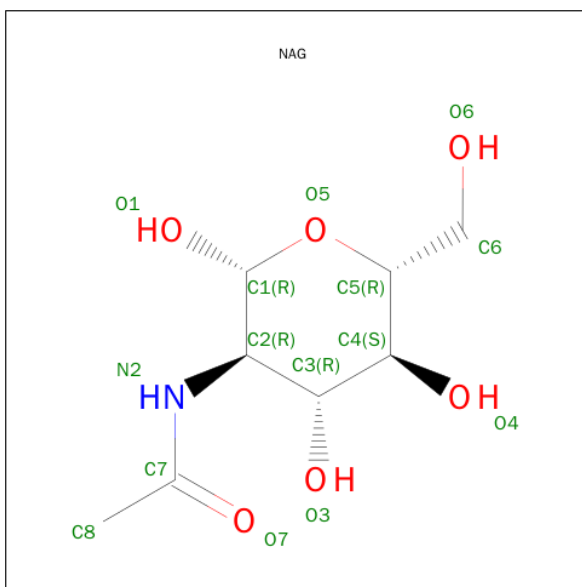
There are 4 discrepancies between the modelled and reference sequences:

Chain	Residue	Modelled	Actual	Comment	Reference
A	130	SER	ASN	ENGINEERED	UNP P10721
A	145	SER	ASN	ENGINEERED	UNP P10721
B	130	SER	ASN	ENGINEERED	UNP P10721
B	145	SER	ASN	ENGINEERED	UNP P10721

- Molecule 2 is a protein called Kit ligand.

Mol	Chain	Residues	Atoms					ZeroOcc	AltConf	Trace
2	C	132	Total	C	N	O	S	0	0	0
			1018	650	165	196	7			
2	D	128	Total	C	N	O	S	0	0	0
			1004	644	163	191	6			

- Molecule 3 is SUGAR (N-ACETYL-D-GLUCOSAMINE) (three-letter code: NAG) (formula: C<sub>8</sub>H<sub>15</sub>NO<sub>6</sub>).

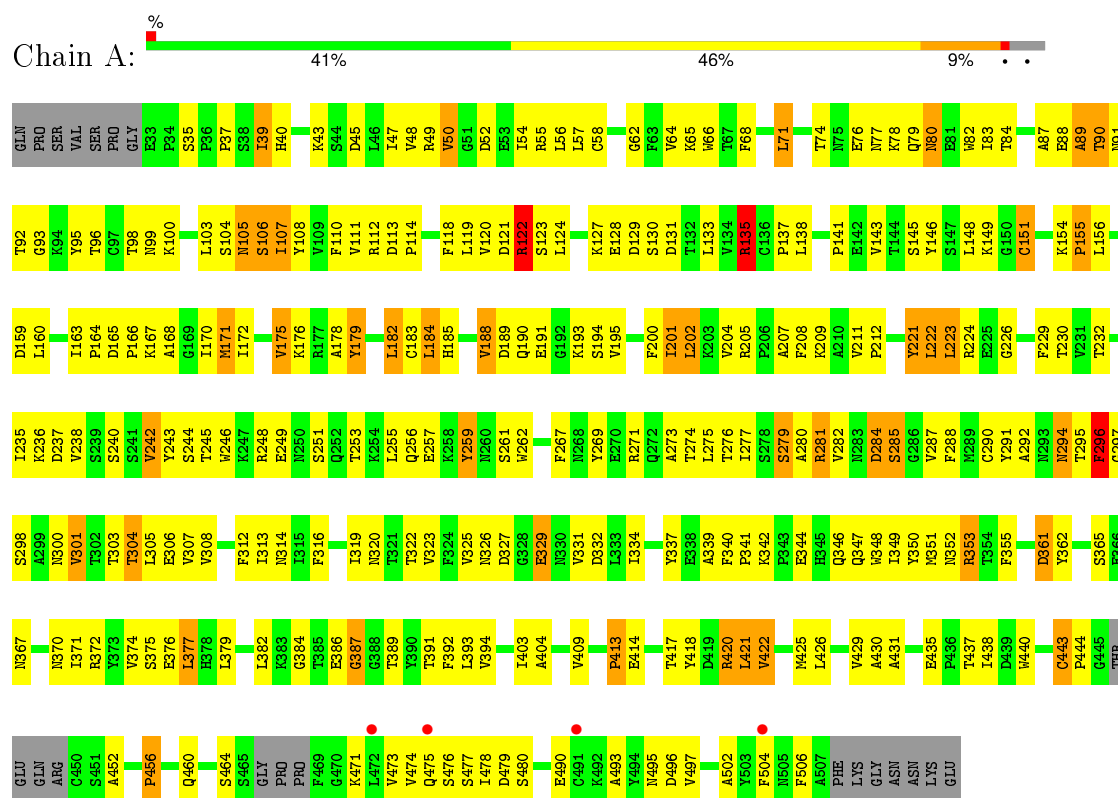


Mol	Chain	Residues	Atoms				ZeroOcc	AltConf
3	A	1	Total	C	N	O	0	0
			14	8	1	5		
3	A	1	Total	C	N	O	0	0
			14	8	1	5		
3	A	1	Total	C	N	O	0	0
			14	8	1	5		
3	B	1	Total	C	N	O	0	0
			14	8	1	5		
3	B	1	Total	C	N	O	0	0
			14	8	1	5		
3	B	1	Total	C	N	O	0	0
			14	8	1	5		

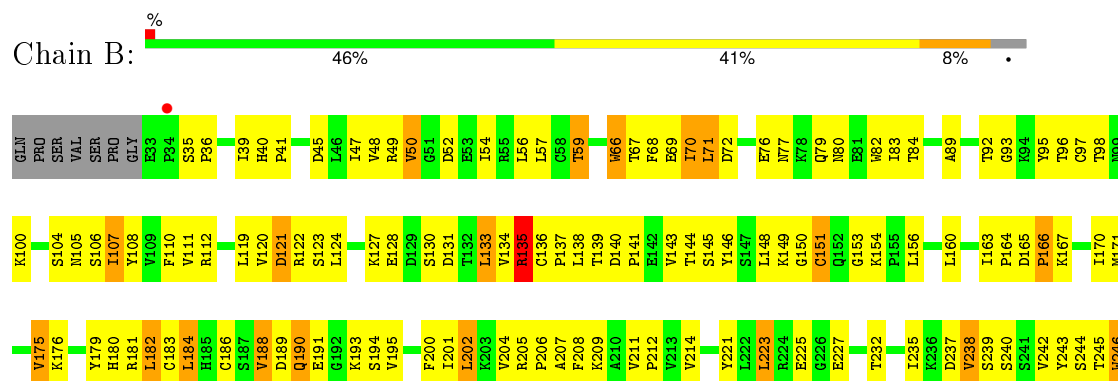
### 3 Residue-property plots

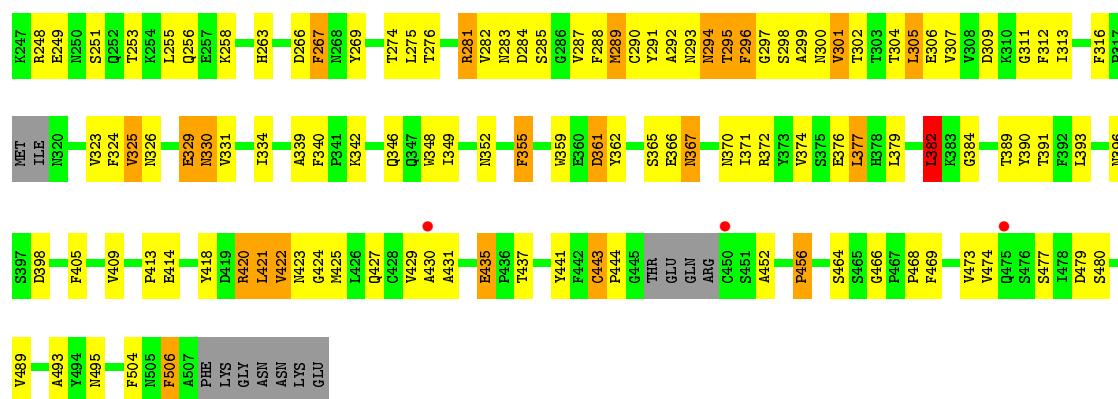
These plots are drawn for all protein, RNA and DNA chains in the entry. The first graphic for a chain summarises the proportions of errors displayed in the second graphic. The second graphic shows the sequence view annotated by issues in geometry and electron density. Residues are color-coded according to the number of geometric quality criteria for which they contain at least one outlier: green = 0, yellow = 1, orange = 2 and red = 3 or more. A red dot above a residue indicates a poor fit to the electron density ( $\text{RSRZ} > 2$ ). Stretches of 2 or more consecutive residues without any outlier are shown as a green connector. Residues present in the sample, but not in the model, are shown in grey.

- Molecule 1: Mast/stem cell growth factor receptor

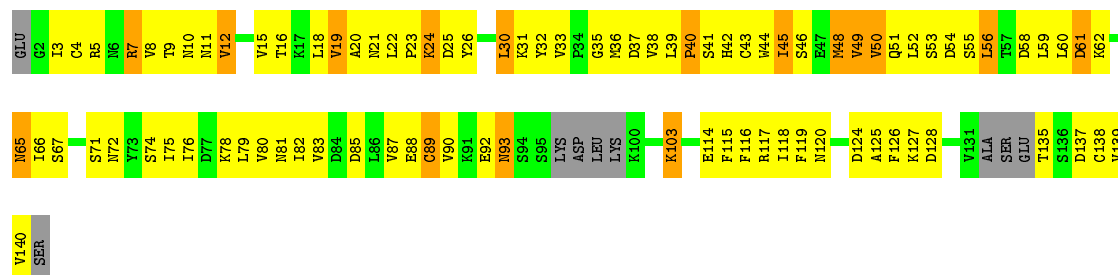


- Molecule 1: Mast/stem cell growth factor receptor

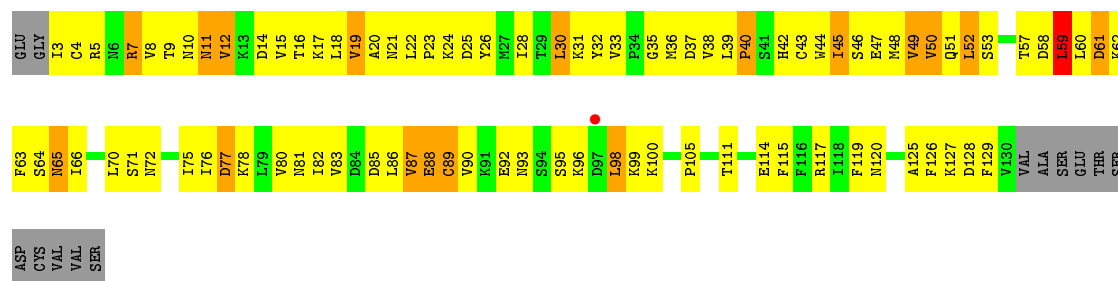




• Molecule 2: Kit ligand



• Molecule 2: Kit ligand



## 4 Data and refinement statistics

Property	Value	Source
Space group	C 1 2 1	Depositor
Cell constants a, b, c, $\alpha$ , $\beta$ , $\gamma$	269.48Å 52.07Å 189.79Å 90.00° 108.00° 90.00°	Depositor
Resolution (Å)	38.96 – 3.50 38.96 – 3.50	Depositor EDS
% Data completeness (in resolution range)	98.3 (38.96-3.50) 98.1 (38.96-3.50)	Depositor EDS
$R_{merge}$	0.06	Depositor
$R_{sym}$	(Not available)	Depositor
$\langle I/\sigma(I) \rangle$ <sup>1</sup>	6.34 (at 3.48Å)	Xtriage
Refinement program	CNS 1.1	Depositor
R, $R_{free}$	0.245 , 0.294 0.221 , 0.264	Depositor DCC
$R_{free}$ test set	1594 reflections (4.99%)	DCC
Wilson B-factor (Å <sup>2</sup> )	79.7	Xtriage
Anisotropy	0.620	Xtriage
Bulk solvent $k_{sol}$ (e/Å <sup>3</sup> ), $B_{sol}$ (Å <sup>2</sup> )	0.27 , 107.0	EDS
Estimated twinning fraction	No twinning to report.	Xtriage
L-test for twinning <sup>2</sup>	$\langle  L  \rangle = 0.48$ , $\langle L^2 \rangle = 0.31$	Xtriage
Outliers	0 of 31962 reflections	Xtriage
$F_o, F_c$ correlation	0.90	EDS
Total number of atoms	9168	wwPDB-VP
Average B, all atoms (Å <sup>2</sup> )	78.0	wwPDB-VP

Xtriage's analysis on translational NCS is as follows: *The largest off-origin peak in the Patterson function is 3.39% of the height of the origin peak. No significant pseudotranslation is detected.*

<sup>1</sup>Intensities estimated from amplitudes.

<sup>2</sup>Theoretical values of  $\langle |L| \rangle$ ,  $\langle L^2 \rangle$  for acentric reflections are 0.5, 0.375 respectively for untwinned datasets, and 0.333, 0.2 for perfectly twinned datasets.

## 5 Model quality [i](#)

### 5.1 Standard geometry [i](#)

Bond lengths and bond angles in the following residue types are not validated in this section: NAG

The Z score for a bond length (or angle) is the number of standard deviations the observed value is removed from the expected value. A bond length (or angle) with  $|Z| > 5$  is considered an outlier worth inspection. RMSZ is the root-mean-square of all Z scores of the bond lengths (or angles).

Mol	Chain	Bond lengths		Bond angles	
		RMSZ	# Z  >5	RMSZ	# Z  >5
1	A	0.52	0/3626	0.82	3/4943 (0.1%)
1	B	0.46	0/3591	0.77	4/4902 (0.1%)
2	C	0.52	0/1034	0.79	1/1403 (0.1%)
2	D	0.51	0/1022	0.78	1/1387 (0.1%)
All	All	0.50	0/9273	0.80	9/12635 (0.1%)

There are no bond length outliers.

The worst 5 of 9 bond angle outliers are listed below:

Mol	Chain	Res	Type	Atoms	Z	Observed(°)	Ideal(°)
1	B	456	PRO	N-CA-CB	6.25	110.80	103.30
1	A	151	CYS	CA-CB-SG	6.19	125.14	114.00
1	B	121	ASP	N-CA-C	-6.03	94.71	111.00
1	A	456	PRO	N-CA-CB	5.89	110.37	103.30
2	C	48	MET	CG-SD-CE	-5.56	91.30	100.20

There are no chirality outliers.

There are no planarity outliers.

### 5.2 Too-close contacts [i](#)

In the following table, the Non-H and H(model) columns list the number of non-hydrogen atoms and hydrogen atoms in the chain respectively. The H(added) column lists the number of hydrogen atoms added and optimized by MolProbity. The Clashes column lists the number of clashes within the asymmetric unit, whereas Symm-Clashes lists symmetry related clashes.

Mol	Chain	Non-H	H(model)	H(added)	Clashes	Symm-Clashes
1	A	3548	0	3291	328	0
1	B	3514	0	3233	290	0

*Continued on next page...*



*Continued from previous page...*

Mol	Chain	Non-H	H(model)	H(added)	Clashes	Symm-Clashes
2	C	1018	0	987	133	0
2	D	1004	0	993	127	0
3	A	42	0	39	2	0
3	B	42	0	39	4	0
All	All	9168	0	8582	866	0

The all-atom clashscore is defined as the number of clashes found per 1000 atoms (including hydrogen atoms). The all-atom clashscore for this structure is 49.

The worst 5 of 866 close contacts within the same asymmetric unit are listed below, sorted by their clash magnitude.

Atom-1	Atom-2	Interatomic distance (Å)	Clash overlap (Å)
2:D:49:VAL:HG13	2:D:87:VAL:HG22	1.22	1.16
1:B:160:LEU:HB2	1:B:179:TYR:HE1	1.10	1.12
2:C:7:ARG:HH21	2:C:89:CYS:HB2	1.03	1.11
1:B:160:LEU:HB2	1:B:179:TYR:CE1	1.86	1.09
1:A:211:VAL:HG22	1:A:297:GLY:HA3	1.36	1.07

There are no symmetry-related clashes.

## 5.3 Torsion angles [i](#)

### 5.3.1 Protein backbone [i](#)

In the following table, the Percentiles column shows the percent Ramachandran outliers of the chain as a percentile score with respect to all X-ray entries followed by that with respect to entries of similar resolution.

The Analysed column shows the number of residues for which the backbone conformation was analysed, and the total number of residues.

Mol	Chain	Analysed	Favoured	Allowed	Outliers	Percentiles	
1	A	462/489 (94%)	368 (80%)	72 (16%)	22 (5%)	3	28
1	B	463/489 (95%)	378 (82%)	63 (14%)	22 (5%)	3	28
2	C	126/141 (89%)	88 (70%)	33 (26%)	5 (4%)	4	33
2	D	126/141 (89%)	86 (68%)	29 (23%)	11 (9%)	1	12
All	All	1177/1260 (93%)	920 (78%)	197 (17%)	60 (5%)	2	26

5 of 60 Ramachandran outliers are listed below:

Mol	Chain	Res	Type
1	A	352	ASN
1	A	422	VAL
1	A	456	PRO
1	B	135	ARG
1	B	295	THR

### 5.3.2 Protein sidechains ⓘ

In the following table, the Percentiles column shows the percent sidechain outliers of the chain as a percentile score with respect to all X-ray entries followed by that with respect to entries of similar resolution.

The Analysed column shows the number of residues for which the sidechain conformation was analysed, and the total number of residues.

Mol	Chain	Analysed	Rotameric	Outliers	Percentiles	
1	A	372/438 (85%)	333 (90%)	39 (10%)	8	38
1	B	364/438 (83%)	327 (90%)	37 (10%)	9	40
2	C	117/135 (87%)	103 (88%)	14 (12%)	6	30
2	D	116/135 (86%)	99 (85%)	17 (15%)	4	22
All	All	969/1146 (85%)	862 (89%)	107 (11%)	8	36

5 of 107 residues with a non-rotameric sidechain are listed below:

Mol	Chain	Res	Type
1	B	135	ARG
1	B	289	MET
2	D	59	LEU
1	B	182	LEU
1	B	194	SER

Some sidechains can be flipped to improve hydrogen bonding and reduce clashes. 5 of 31 such sidechains are listed below:

Mol	Chain	Res	Type
1	B	294	ASN
1	B	410	ASN
2	D	65	ASN
1	B	320	ASN
1	B	427	GLN

### 5.3.3 RNA ⓘ

There are no RNA molecules in this entry.

## 5.4 Non-standard residues in protein, DNA, RNA chains ⓘ

There are no non-standard protein/DNA/RNA residues in this entry.

## 5.5 Carbohydrates ⓘ

There are no carbohydrates in this entry.

## 5.6 Ligand geometry ⓘ

6 ligands are modelled in this entry.

In the following table, the Counts columns list the number of bonds (or angles) for which Mogul statistics could be retrieved, the number of bonds (or angles) that are observed in the model and the number of bonds (or angles) that are defined in the chemical component dictionary. The Link column lists molecule types, if any, to which the group is linked. The Z score for a bond length (or angle) is the number of standard deviations the observed value is removed from the expected value. A bond length (or angle) with  $|Z| > 2$  is considered an outlier worth inspection. RMSZ is the root-mean-square of all Z scores of the bond lengths (or angles).

Mol	Type	Chain	Res	Link	Bond lengths			Bond angles		
					Counts	RMSZ	# $ Z  > 2$	Counts	RMSZ	# $ Z  > 2$
3	NAG	A	700	1	14,14,15	0.56	0	15,19,21	0.74	1 (6%)
3	NAG	A	750	1	14,14,15	0.72	0	15,19,21	1.19	3 (20%)
3	NAG	A	800	1	14,14,15	0.56	0	15,19,21	0.78	1 (6%)
3	NAG	B	850	1	14,14,15	0.96	1 (7%)	15,19,21	1.07	2 (13%)
3	NAG	B	900	1	14,14,15	0.64	0	15,19,21	0.71	0
3	NAG	B	950	1	14,14,15	0.55	0	15,19,21	0.81	1 (6%)

In the following table, the Chirals column lists the number of chiral outliers, the number of chiral centers analysed, the number of these observed in the model and the number defined in the chemical component dictionary. Similar counts are reported in the Torsion and Rings columns. '-' means no outliers of that kind were identified.

Mol	Type	Chain	Res	Link	Chirals	Torsions	Rings
3	NAG	A	700	1	-	0/6/23/26	0/1/1/1
3	NAG	A	750	1	-	1/6/23/26	0/1/1/1
3	NAG	A	800	1	-	0/6/23/26	0/1/1/1

*Continued on next page...*

*Continued from previous page...*

Mol	Type	Chain	Res	Link	Chirals	Torsions	Rings
3	NAG	B	850	1	-	0/6/23/26	0/1/1/1
3	NAG	B	900	1	-	0/6/23/26	0/1/1/1
3	NAG	B	950	1	-	0/6/23/26	0/1/1/1

All (1) bond length outliers are listed below:

Mol	Chain	Res	Type	Atoms	Z	Observed(Å)	Ideal(Å)
3	B	850	NAG	C1-C2	2.75	1.56	1.52

The worst 5 of 8 bond angle outliers are listed below:

Mol	Chain	Res	Type	Atoms	Z	Observed(°)	Ideal(°)
3	A	750	NAG	C2-N2-C7	-2.95	119.25	123.04
3	B	950	NAG	C2-N2-C7	-2.55	119.76	123.04
3	A	800	NAG	C2-N2-C7	-2.42	119.93	123.04
3	A	700	NAG	C2-N2-C7	-2.26	120.14	123.04
3	A	750	NAG	C3-C4-C5	-2.17	106.42	110.20

There are no chirality outliers.

All (1) torsion outliers are listed below:

Mol	Chain	Res	Type	Atoms
3	A	750	NAG	O7-C7-N2-C2

There are no ring outliers.

4 monomers are involved in 6 short contacts:

Mol	Chain	Res	Type	Clashes	Symm-Clashes
3	A	750	NAG	2	0
3	B	850	NAG	2	0
3	B	900	NAG	1	0
3	B	950	NAG	1	0

## 5.7 Other polymers ⓘ

There are no such residues in this entry.

## 5.8 Polymer linkage issues ⓘ

There are no chain breaks in this entry.

## 6 Fit of model and data [i](#)

### 6.1 Protein, DNA and RNA chains [i](#)

In the following table, the column labelled ‘#RSRZ> 2’ contains the number (and percentage) of RSRZ outliers, followed by percent RSRZ outliers for the chain as percentile scores relative to all X-ray entries and entries of similar resolution. The OWAB column contains the minimum, median, 95<sup>th</sup> percentile and maximum values of the occupancy-weighted average B-factor per residue. The column labelled ‘Q< 0.9’ lists the number of (and percentage) of residues with an average occupancy less than 0.9.

Mol	Chain	Analysed	<RSRZ>	#RSRZ>2	OWAB(Å <sup>2</sup> )	Q<0.9
1	A	468/489 (95%)	-0.46	4 (0%) 85 78	7, 62, 160, 197	0
1	B	469/489 (95%)	-0.35	4 (0%) 85 78	7, 89, 169, 213	0
2	C	132/141 (93%)	-0.63	0 100 100	5, 40, 168, 197	0
2	D	128/141 (90%)	-0.61	1 (0%) 87 80	5, 50, 163, 214	0
All	All	1197/1260 (95%)	-0.45	9 (0%) 87 80	5, 71, 167, 214	0

The worst 5 of 9 RSRZ outliers are listed below:

Mol	Chain	Res	Type	RSRZ
1	B	450	CYS	3.3
1	B	475	GLN	3.3
1	A	475	GLN	3.0
1	B	34	PRO	2.6
1	A	504	PHE	2.6

### 6.2 Non-standard residues in protein, DNA, RNA chains [i](#)

There are no non-standard protein/DNA/RNA residues in this entry.

### 6.3 Carbohydrates [i](#)

There are no carbohydrates in this entry.

### 6.4 Ligands [i](#)

In the following table, the Atoms column lists the number of modelled atoms in the group and the number defined in the chemical component dictionary. LLDF column lists the quality of electron density of the group with respect to its neighbouring residues in protein, DNA or RNA chains. The B-factors column lists the minimum, median, 95<sup>th</sup> percentile and maximum values of B factors

of atoms in the group. The column labelled 'Q< 0.9' lists the number of atoms with occupancy less than 0.9.

Mol	Type	Chain	Res	Atoms	RSCC	RSR	LLDF	B-factors( $\text{\AA}^2$ )	Q<0.9
3	NAG	A	750	14/15	0.82	0.21	-	81,128,137,154	0
3	NAG	B	900	14/15	0.82	0.18	-	117,129,151,154	0
3	NAG	A	700	14/15	0.89	0.13	-	118,134,144,145	0
3	NAG	B	950	14/15	0.90	0.16	-	154,161,175,183	0
3	NAG	A	800	14/15	0.79	0.16	-	155,168,177,178	0
3	NAG	B	850	14/15	0.73	0.23	-	135,148,160,162	0

## 6.5 Other polymers [i](#)

There are no such residues in this entry.