



# Full wwPDB X-ray Structure Validation Report ⓘ

Feb 1, 2016 – 08:25 AM GMT

PDB ID : 3EKD  
Title : Crystal structure of the A264M heme domain of cytochrome P450 BM3  
Authors : Toogood, H.S.; Leys, D.  
Deposited on : 2008-09-19  
Resolution : 2.50 Å(reported)

This is a Full wwPDB X-ray Structure Validation Report for a publicly released PDB entry.  
We welcome your comments at [validation@mail.wwpdb.org](mailto:validation@mail.wwpdb.org)  
A user guide is available at  
<http://wwpdb.org/validation/2016/XrayValidationReportHelp>  
with specific help available everywhere you see the ⓘ symbol.

---

The following versions of software and data (see [references ⓘ](#)) were used in the production of this report:

MolProbity : 4.02b-467  
Mogul : 1.7 (RC4), CSD as536be (2015)  
Xtriage (Phenix) : 1.9-1692  
EDS : rb-20026688  
Percentile statistics : 20151230.v01 (using entries in the PDB archive December 30th 2015)  
Refmac : 5.8.0135  
CCP4 : 6.5.0  
Ideal geometry (proteins) : Engh & Huber (2001)  
Ideal geometry (DNA, RNA) : Parkinson et al. (1996)  
Validation Pipeline (wwPDB-VP) : trunk26865

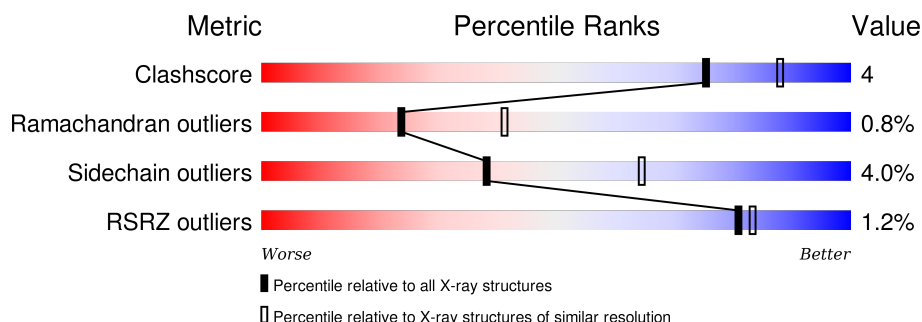
# 1 Overall quality at a glance

The following experimental techniques were used to determine the structure:

*X-RAY DIFFRACTION*

The reported resolution of this entry is 2.50 Å.

Percentile scores (ranging between 0-100) for global validation metrics of the entry are shown in the following graphic. The table shows the number of entries on which the scores are based.



Metric	Whole archive (#Entries)	Similar resolution (#Entries, resolution range(Å))
Clashscore	102246	4242 (2.50-2.50)
Ramachandran outliers	100387	4156 (2.50-2.50)
Sidechain outliers	100360	4158 (2.50-2.50)
RSRZ outliers	91569	3562 (2.50-2.50)

The table below summarises the geometric issues observed across the polymeric chains and their fit to the electron density. The red, orange, yellow and green segments on the lower bar indicate the fraction of residues that contain outliers for  $\geq 3$ , 2, 1 and 0 types of geometric quality criteria. A grey segment represents the fraction of residues that are not modelled. The numeric value for each fraction is indicated below the corresponding segment, with a dot representing fractions  $\leq 5\%$ . The upper red bar (where present) indicates the fraction of residues that have poor fit to the electron density. The numeric value is given above the bar.

Mol	Chain	Length	Quality of chain
1	A	470	<div> <div></div> <div>87%</div> <div>8%</div> <div>..</div> </div>
1	B	470	<div> <div></div> <div>84%</div> <div>11%</div> <div>..</div> </div>

The following table lists non-polymeric compounds, carbohydrate monomers and non-standard residues in protein, DNA, RNA chains that are outliers for geometric or electron-density-fit criteria:

Mol	Type	Chain	Res	Chirality	Geometry	Clashes	Electron density
2	PAM	A	471	-	-	-	X

## 2 Entry composition [i](#)

There are 4 unique types of molecules in this entry. The entry contains 7523 atoms, of which 0 are hydrogens and 0 are deuteriums.

In the tables below, the ZeroOcc column contains the number of atoms modelled with zero occupancy, the AltConf column contains the number of residues with at least one atom in alternate conformation and the Trace column contains the number of residues modelled with at most 2 atoms.

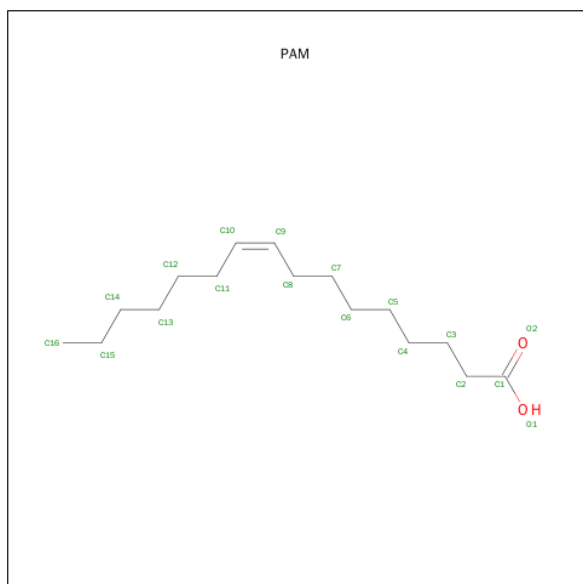
- Molecule 1 is a protein called Cytochrome P450(BM-3).

Mol	Chain	Residues	Atoms					ZeroOcc	AltConf	Trace
1	A	454	Total	C	N	O	S	0	0	0
			3623	2320	610	675	18			
1	B	455	Total	C	N	O	S	0	0	0
			3624	2321	612	673	18			

There are 2 discrepancies between the modelled and reference sequences:

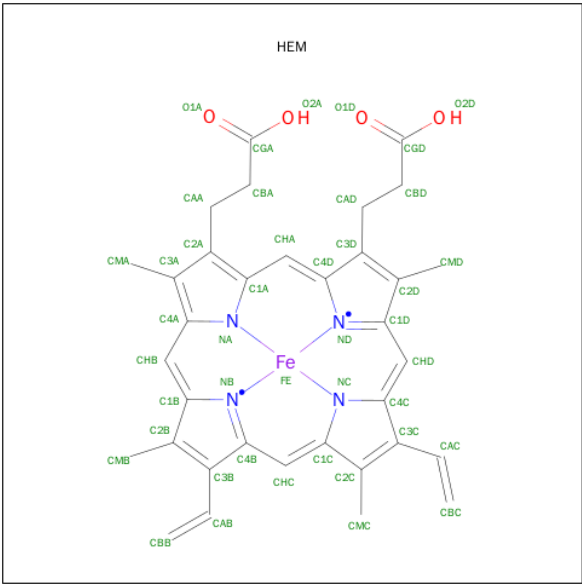
Chain	Residue	Modelled	Actual	Comment	Reference
A	264	MET	ALA	ENGINEERED	UNP P14779
B	264	MET	ALA	ENGINEERED	UNP P14779

- Molecule 2 is PALMITOLEIC ACID (three-letter code: PAM) (formula: C<sub>16</sub>H<sub>30</sub>O<sub>2</sub>).



Mol	Chain	Residues	Atoms			ZeroOcc	AltConf
2	A	1	Total	C	O	0	0
			18	16	2		

- Molecule 3 is PROTOPORPHYRIN IX CONTAINING FE (three-letter code: HEM) (formula: C<sub>34</sub>H<sub>32</sub>FeN<sub>4</sub>O<sub>4</sub>).



Mol	Chain	Residues	Atoms					ZeroOcc	AltConf
3	A	1	Total	C	Fe	N	O	0	0
			43	34	1	4	4		
3	B	1	Total	C	Fe	N	O	0	0
			43	34	1	4	4		

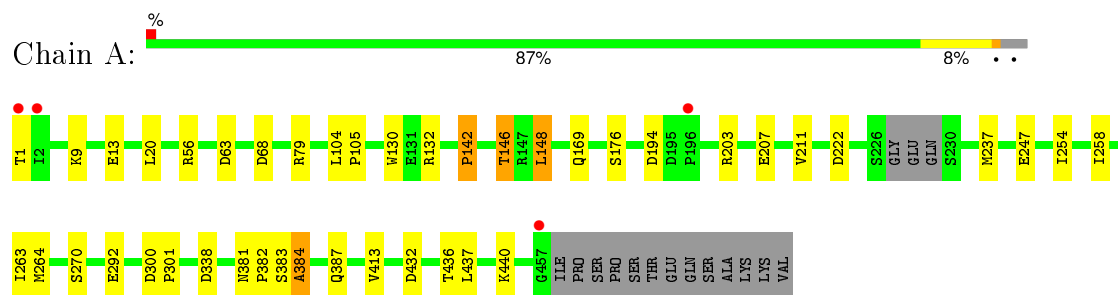
- Molecule 4 is water.

Mol	Chain	Residues	Atoms		ZeroOcc	AltConf
4	A	111	Total	O	0	0
			111	111		
4	B	61	Total	O	0	0
			61	61		

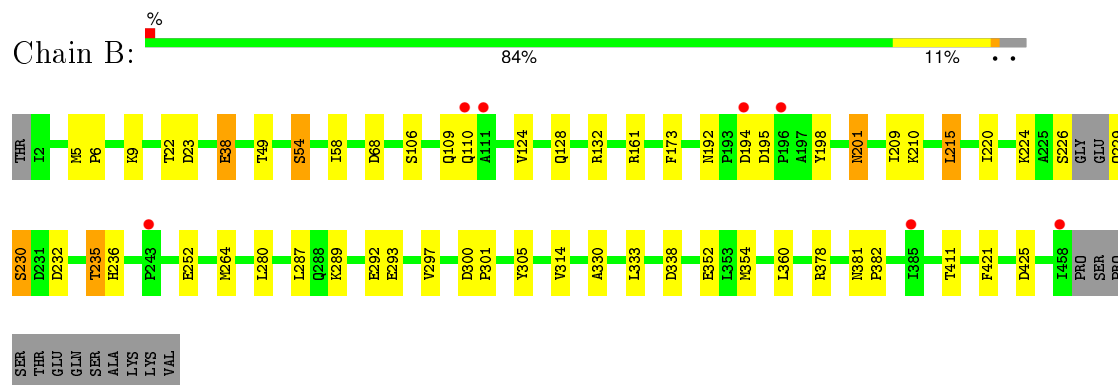
### 3 Residue-property plots [i](#)

These plots are drawn for all protein, RNA and DNA chains in the entry. The first graphic for a chain summarises the proportions of errors displayed in the second graphic. The second graphic shows the sequence view annotated by issues in geometry and electron density. Residues are color-coded according to the number of geometric quality criteria for which they contain at least one outlier: green = 0, yellow = 1, orange = 2 and red = 3 or more. A red dot above a residue indicates a poor fit to the electron density ( $RSRZ > 2$ ). Stretches of 2 or more consecutive residues without any outlier are shown as a green connector. Residues present in the sample, but not in the model, are shown in grey.

#### • Molecule 1: Cytochrome P450(BM-3)



#### • Molecule 1: Cytochrome P450(BM-3)



## 4 Data and refinement statistics

Property	Value	Source
Space group	P 21 21 21	Depositor
Cell constants a, b, c, $\alpha$ , $\beta$ , $\gamma$	63.77Å 125.17Å 153.94Å 90.00° 90.00° 90.00°	Depositor
Resolution (Å)	20.00 – 2.50 53.31 – 2.30	Depositor EDS
% Data completeness (in resolution range)	99.4 (20.00-2.50) 99.1 (53.31-2.30)	Depositor EDS
$R_{merge}$	0.06	Depositor
$R_{sym}$	(Not available)	Depositor
$\langle I/\sigma(I) \rangle$ <sup>1</sup>	1.71 (at 2.29Å)	Xtriage
Refinement program	REFMAC 5.2.0019	Depositor
R, $R_{free}$	0.217 , 0.252 0.219 , (Not available)	Depositor DCC
$R_{free}$ test set	No test flags present.	DCC
Wilson B-factor (Å <sup>2</sup> )	34.5	Xtriage
Anisotropy	0.252	Xtriage
Bulk solvent $k_{sol}$ (e/Å <sup>3</sup> ), $B_{sol}$ (Å <sup>2</sup> )	0.30 , 52.2	EDS
Estimated twinning fraction	No twinning to report.	Xtriage
L-test for twinning <sup>2</sup>	$\langle  L  \rangle = 0.49$ , $\langle L^2 \rangle = 0.32$	Xtriage
Outliers	0 of 55099 reflections	Xtriage
$F_o, F_c$ correlation	0.93	EDS
Total number of atoms	7523	wwPDB-VP
Average B, all atoms (Å <sup>2</sup> )	34.0	wwPDB-VP

Xtriage's analysis on translational NCS is as follows: *The largest off-origin peak in the Patterson function is 3.47% of the height of the origin peak. No significant pseudotranslation is detected.*

<sup>1</sup>Intensities estimated from amplitudes.

<sup>2</sup>Theoretical values of  $\langle |L| \rangle$ ,  $\langle L^2 \rangle$  for acentric reflections are 0.5, 0.375 respectively for untwinned datasets, and 0.333, 0.2 for perfectly twinned datasets.

## 5 Model quality

### 5.1 Standard geometry

Bond lengths and bond angles in the following residue types are not validated in this section: HEM, PAM

The Z score for a bond length (or angle) is the number of standard deviations the observed value is removed from the expected value. A bond length (or angle) with  $|Z| > 5$  is considered an outlier worth inspection. RMSZ is the root-mean-square of all Z scores of the bond lengths (or angles).

Mol	Chain	Bond lengths		Bond angles	
		RMSZ	$\# Z  > 5$	RMSZ	$\# Z  > 5$
1	A	1.23	3/3707 (0.1%)	0.99	8/5017 (0.2%)
1	B	1.14	1/3708 (0.0%)	0.95	5/5020 (0.1%)
All	All	1.19	4/7415 (0.1%)	0.97	13/10037 (0.1%)

All (4) bond length outliers are listed below:

Mol	Chain	Res	Type	Atoms	Z	Observed(Å)	Ideal(Å)
1	A	130	TRP	CB-CG	6.90	1.62	1.50
1	B	352	GLU	CD-OE1	6.18	1.32	1.25
1	A	247	GLU	CG-CD	5.37	1.60	1.51
1	A	292	GLU	CG-CD	5.23	1.59	1.51

All (13) bond angle outliers are listed below:

Mol	Chain	Res	Type	Atoms	Z	Observed(°)	Ideal(°)
1	B	132	ARG	NE-CZ-NH1	7.91	124.25	120.30
1	B	338	ASP	CB-CG-OD1	7.14	124.73	118.30
1	A	56	ARG	NE-CZ-NH1	6.87	123.73	120.30
1	B	132	ARG	NE-CZ-NH2	-6.65	116.98	120.30
1	A	68	ASP	CB-CG-OD1	6.61	124.25	118.30
1	A	432	ASP	CB-CG-OD1	6.47	124.12	118.30
1	A	20	LEU	CA-CB-CG	6.04	129.20	115.30
1	A	79	ARG	NE-CZ-NH1	5.78	123.19	120.30
1	B	425	ASP	CB-CG-OD1	5.71	123.44	118.30
1	B	161	ARG	NE-CZ-NH1	5.55	123.08	120.30
1	A	63	ASP	CB-CG-OD1	5.49	123.24	118.30
1	A	132	ARG	NE-CZ-NH1	5.43	123.02	120.30
1	A	338	ASP	CB-CG-OD1	5.12	122.91	118.30

There are no chirality outliers.

There are no planarity outliers.

## 5.2 Too-close contacts

In the following table, the Non-H and H(model) columns list the number of non-hydrogen atoms and hydrogen atoms in the chain respectively. The H(added) column lists the number of hydrogen atoms added and optimized by MolProbity. The Clashes column lists the number of clashes within the asymmetric unit, whereas Symm-Clashes lists symmetry related clashes.

Mol	Chain	Non-H	H(model)	H(added)	Clashes	Symm-Clashes
1	A	3623	0	3556	19	0
1	B	3624	0	3550	32	0
2	A	18	0	29	0	0
3	A	43	0	30	1	0
3	B	43	0	30	5	0
4	A	111	0	0	2	0
4	B	61	0	0	3	0
All	All	7523	0	7195	57	0

The all-atom clashscore is defined as the number of clashes found per 1000 atoms (including hydrogen atoms). The all-atom clashscore for this structure is 4.

All (57) close contacts within the same asymmetric unit are listed below, sorted by their clash magnitude.

Atom-1	Atom-2	Interatomic distance (Å)	Clash overlap (Å)
1:B:173:PHE:HD1	1:B:215:LEU:HD21	1.21	1.04
1:B:330:ALA:HB1	1:B:354:MET:CE	1.94	0.97
1:B:209:ILE:HG22	4:B:506:HOH:O	1.67	0.94
1:A:237:MET:HE3	1:A:254:ILE:HG23	1.57	0.87
1:B:173:PHE:CD1	1:B:215:LEU:HD21	2.11	0.85
3:B:471:HEM:HMC2	3:B:471:HEM:HBC2	1.60	0.81
1:B:58:ILE:HD12	1:B:360:LEU:HD13	1.63	0.81
1:B:330:ALA:HB1	1:B:354:MET:HE2	1.67	0.74
3:B:471:HEM:HBB2	3:B:471:HEM:HMB2	1.70	0.74
1:B:220:ILE:HG22	1:B:224:LYS:HE3	1.71	0.71
1:B:201:ASN:H	1:B:201:ASN:HD22	1.39	0.70
1:A:237:MET:CE	1:A:254:ILE:HG23	2.22	0.69
1:B:330:ALA:HB1	1:B:354:MET:HE1	1.77	0.65
1:A:146:THR:HG22	1:A:270:SER:OG	1.98	0.63
1:B:201:ASN:ND2	1:B:201:ASN:H	1.98	0.61
1:A:237:MET:HE2	1:A:258:ILE:HD11	1.85	0.59
1:B:230:SER:O	1:B:235:THR:HG21	2.02	0.59

*Continued on next page...*



*Continued from previous page...*

Atom-1	Atom-2	Interatomic distance (Å)	Clash overlap (Å)
1:B:68:ASP:CG	4:B:505:HOH:O	2.42	0.58
1:B:220:ILE:HG22	1:B:224:LYS:CE	2.34	0.58
1:A:237:MET:HE1	1:A:258:ILE:CD1	2.35	0.57
1:B:232:ASP:OD1	1:B:235:THR:HG22	2.03	0.57
1:A:207:GLU:O	1:A:211:VAL:HG23	2.05	0.57
1:A:381:ASN:O	1:A:384:ALA:HB3	2.05	0.56
1:B:124:VAL:O	1:B:128:GLN:HG3	2.05	0.56
1:A:237:MET:CE	1:A:258:ILE:CD1	2.83	0.56
1:B:229:GLN:O	1:B:230:SER:O	2.23	0.55
1:A:237:MET:CE	1:A:258:ILE:HD11	2.38	0.54
3:B:471:HEM:CMC	3:B:471:HEM:HBC2	2.33	0.54
3:B:471:HEM:CMB	3:B:471:HEM:HBB2	2.39	0.52
1:B:232:ASP:H	1:B:235:THR:CG2	2.24	0.51
1:A:258:ILE:HA	4:A:573:HOH:O	2.11	0.51
1:B:280:LEU:HB3	1:B:287:LEU:HD13	1.92	0.50
1:A:148:LEU:HD21	1:A:413:VAL:HG21	1.93	0.50
1:B:293:GLU:O	1:B:297:VAL:HG23	2.14	0.48
1:B:38:GLU:HB3	1:B:54:SER:HB3	1.95	0.47
1:B:300:ASP:HB3	1:B:301:PRO:CD	2.45	0.47
1:A:436:THR:O	1:A:437:LEU:HB2	2.15	0.47
1:A:237:MET:HE1	1:A:258:ILE:HD13	1.97	0.46
1:A:142:PRO:O	1:A:146:THR:HG23	2.14	0.46
1:B:109:GLN:HA	1:B:109:GLN:NE2	2.30	0.46
1:A:382:PRO:O	1:A:384:ALA:N	2.49	0.45
1:A:440:LYS:HD3	4:A:575:HOH:O	2.16	0.45
1:B:5:MET:HA	1:B:6:PRO:HD3	1.78	0.45
1:B:381:ASN:HA	1:B:382:PRO:HD2	1.73	0.45
3:A:472:HEM:HBC2	3:A:472:HEM:HMC2	1.99	0.45
1:B:235:THR:HB	4:B:495:HOH:O	2.18	0.44
1:B:106:SER:HG	1:B:236:HIS:HD1	1.64	0.44
1:A:237:MET:CE	1:A:258:ILE:HD13	2.48	0.44
1:A:104:LEU:N	1:A:105:PRO:CD	2.82	0.43
1:B:305:TYR:C	1:B:305:TYR:CD1	2.92	0.43
1:B:314:VAL:HG12	1:B:411:THR:HG23	2.01	0.43
3:B:471:HEM:CBC	3:B:471:HEM:HMC2	2.42	0.42
1:B:232:ASP:O	1:B:235:THR:HG23	2.20	0.41
1:B:192:ASN:O	1:B:195:ASP:HB2	2.19	0.41
1:A:300:ASP:HB3	1:A:301:PRO:CD	2.50	0.41
1:B:192:ASN:O	1:B:195:ASP:CB	2.68	0.41
1:B:58:ILE:CD1	1:B:360:LEU:HD13	2.43	0.40

There are no symmetry-related clashes.

## 5.3 Torsion angles [i](#)

### 5.3.1 Protein backbone [i](#)

In the following table, the Percentiles column shows the percent Ramachandran outliers of the chain as a percentile score with respect to all X-ray entries followed by that with respect to entries of similar resolution.

The Analysed column shows the number of residues for which the backbone conformation was analysed, and the total number of residues.

Mol	Chain	Analysed	Favoured	Allowed	Outliers	Percentiles	
1	A	450/470 (96%)	425 (94%)	22 (5%)	3 (1%)	26	46
1	B	451/470 (96%)	404 (90%)	43 (10%)	4 (1%)	21	37
All	All	901/940 (96%)	829 (92%)	65 (7%)	7 (1%)	24	41

All (7) Ramachandran outliers are listed below:

Mol	Chain	Res	Type
1	A	384	ALA
1	B	230	SER
1	A	383	SER
1	B	378	ARG
1	B	9	LYS
1	B	198	TYR
1	A	263	ILE

### 5.3.2 Protein sidechains [i](#)

In the following table, the Percentiles column shows the percent sidechain outliers of the chain as a percentile score with respect to all X-ray entries followed by that with respect to entries of similar resolution.

The Analysed column shows the number of residues for which the sidechain conformation was analysed, and the total number of residues.

Mol	Chain	Analysed	Rotameric	Outliers	Percentiles	
1	A	386/412 (94%)	373 (97%)	13 (3%)	44	72
1	B	385/412 (93%)	367 (95%)	18 (5%)	32	56
All	All	771/824 (94%)	740 (96%)	31 (4%)	38	64

All (31) residues with a non-rotameric sidechain are listed below:

Mol	Chain	Res	Type
1	A	1	THR
1	A	9	LYS
1	A	13	GLU
1	A	142	PRO
1	A	146	THR
1	A	148	LEU
1	A	169	GLN
1	A	176	SER
1	A	194	ASP
1	A	203	ARG
1	A	222	ASP
1	A	264	MET
1	A	387	GLN
1	B	22	THR
1	B	23	ASP
1	B	38	GLU
1	B	49	THR
1	B	54	SER
1	B	110	GLN
1	B	194	ASP
1	B	201	ASN
1	B	210	LYS
1	B	215	LEU
1	B	226	SER
1	B	235	THR
1	B	252	GLU
1	B	264	MET
1	B	289	LYS
1	B	292	GLU
1	B	333	LEU
1	B	421	PHE

Some sidechains can be flipped to improve hydrogen bonding and reduce clashes. All (12) such sidechains are listed below:

Mol	Chain	Res	Type
1	A	116	HIS
1	A	201	ASN
1	A	239	ASN
1	A	388	HIS
1	A	428	ASN
1	B	100	HIS
1	B	109	GLN
1	B	116	HIS

*Continued on next page...*

*Continued from previous page...*

Mol	Chain	Res	Type
1	B	201	ASN
1	B	388	HIS
1	B	403	GLN
1	B	420	HIS

### 5.3.3 RNA [i](#)

There are no RNA molecules in this entry.

### 5.4 Non-standard residues in protein, DNA, RNA chains [i](#)

There are no non-standard protein/DNA/RNA residues in this entry.

### 5.5 Carbohydrates [i](#)

There are no carbohydrates in this entry.

### 5.6 Ligand geometry [i](#)

3 ligands are modelled in this entry.

In the following table, the Counts columns list the number of bonds (or angles) for which Mogul statistics could be retrieved, the number of bonds (or angles) that are observed in the model and the number of bonds (or angles) that are defined in the chemical component dictionary. The Link column lists molecule types, if any, to which the group is linked. The Z score for a bond length (or angle) is the number of standard deviations the observed value is removed from the expected value. A bond length (or angle) with  $|Z| > 2$  is considered an outlier worth inspection. RMSZ is the root-mean-square of all Z scores of the bond lengths (or angles).

Mol	Type	Chain	Res	Link	Bond lengths			Bond angles		
					Counts	RMSZ	$\# Z  > 2$	Counts	RMSZ	$\# Z  > 2$
2	PAM	A	471	-	14,17,17	1.20	1 (7%)	14,17,17	0.74	0
3	HEM	A	472	1	30,50,50	2.70	12 (40%)	24,82,82	2.55	14 (58%)
3	HEM	B	471	1	30,50,50	2.08	8 (26%)	24,82,82	2.41	9 (37%)

In the following table, the Chirals column lists the number of chiral outliers, the number of chiral centers analysed, the number of these observed in the model and the number defined in the chemical component dictionary. Similar counts are reported in the Torsion and Rings columns. '-' means no outliers of that kind were identified.

Mol	Type	Chain	Res	Link	Chirals	Torsions	Rings
2	PAM	A	471	-	-	0/13/15/15	0/0/0/0
3	HEM	A	472	1	-	0/10/54/54	0/0/8/8
3	HEM	B	471	1	-	0/10/54/54	0/0/8/8

All (21) bond length outliers are listed below:

Mol	Chain	Res	Type	Atoms	Z	Observed(Å)	Ideal(Å)
3	A	472	HEM	C3B-C4B	-6.47	1.46	1.51
3	B	471	HEM	C3B-C4B	-5.79	1.46	1.51
3	A	472	HEM	C3D-C4D	-4.86	1.45	1.51
3	B	471	HEM	C3D-C4D	-4.63	1.45	1.51
3	A	472	HEM	C2C-C1C	-3.05	1.46	1.52
3	B	471	HEM	C2D-C1D	-2.17	1.44	1.51
3	A	472	HEM	C3B-CAB	2.18	1.55	1.51
3	A	472	HEM	CHD-C4C	2.22	1.41	1.36
3	A	472	HEM	FE-NB	2.40	2.10	1.97
3	B	471	HEM	C1C-NC	2.47	1.39	1.36
3	B	471	HEM	C3B-CAB	2.50	1.56	1.51
3	B	471	HEM	C4C-NC	2.55	1.39	1.36
3	A	472	HEM	C4C-NC	2.65	1.39	1.36
3	B	471	HEM	CAA-C2A	3.11	1.57	1.52
3	A	472	HEM	CAA-C2A	3.26	1.57	1.52
3	A	472	HEM	C3C-CAC	3.40	1.57	1.51
2	A	471	PAM	C10-C9	3.84	1.53	1.31
3	B	471	HEM	FE-NC	4.43	2.13	1.95
3	A	472	HEM	FE-NC	4.79	2.14	1.95
3	A	472	HEM	C1C-NC	5.25	1.42	1.36
3	A	472	HEM	FE-ND	5.54	2.26	1.97

All (23) bond angle outliers are listed below:

Mol	Chain	Res	Type	Atoms	Z	Observed(°)	Ideal(°)
3	A	472	HEM	C3B-C4B-NB	-3.09	105.72	111.63
3	A	472	HEM	C3B-CAB-CBB	-2.33	120.89	124.46
3	A	472	HEM	CAA-C2A-C1A	2.05	129.23	127.01
3	A	472	HEM	C2C-C1C-CHC	2.18	126.99	123.68
3	A	472	HEM	C2D-C3D-C4D	2.29	105.39	101.50
3	B	471	HEM	CAA-C2A-C1A	2.29	129.50	127.01
3	A	472	HEM	CMD-C2D-C3D	2.36	124.80	114.35
3	B	471	HEM	C2D-C3D-C4D	2.42	105.60	101.50
3	A	472	HEM	C1D-CHD-C4C	2.60	130.17	125.82
3	A	472	HEM	CAA-CBA-CGA	2.61	117.54	112.75
3	A	472	HEM	CMB-C2B-C3B	2.90	123.78	116.53

*Continued on next page...*

*Continued from previous page...*

Mol	Chain	Res	Type	Atoms	Z	Observed(°)	Ideal(°)
3	B	471	HEM	CMD-C2D-C3D	3.29	128.90	114.35
3	A	472	HEM	CBA-CAA-C2A	3.30	118.44	112.53
3	B	471	HEM	CAA-CBA-CGA	3.45	119.07	112.75
3	B	471	HEM	CMC-C2C-C3C	3.48	125.22	116.53
3	B	471	HEM	C2C-C1C-CHC	3.77	129.42	123.68
3	A	472	HEM	C3B-C4B-CHC	4.00	128.80	123.16
3	A	472	HEM	CMC-C2C-C3C	4.21	127.05	116.53
3	B	471	HEM	CMB-C2B-C3B	4.28	127.22	116.53
3	A	472	HEM	CAD-C3D-C4D	4.30	127.64	112.47
3	B	471	HEM	CAD-C3D-C2D	4.30	125.59	113.22
3	B	471	HEM	CAD-C3D-C4D	4.63	128.80	112.47
3	A	472	HEM	CAD-C3D-C2D	4.78	126.96	113.22

There are no chirality outliers.

There are no torsion outliers.

There are no ring outliers.

2 monomers are involved in 6 short contacts:

Mol	Chain	Res	Type	Clashes	Symm-Clashes
3	A	472	HEM	1	0
3	B	471	HEM	5	0

## 5.7 Other polymers [i](#)

There are no such residues in this entry.

## 5.8 Polymer linkage issues [i](#)

There are no chain breaks in this entry.

## 6 Fit of model and data [i](#)

### 6.1 Protein, DNA and RNA chains [i](#)

In the following table, the column labelled ‘#RSRZ> 2’ contains the number (and percentage) of RSRZ outliers, followed by percent RSRZ outliers for the chain as percentile scores relative to all X-ray entries and entries of similar resolution. The OWAB column contains the minimum, median, 95<sup>th</sup> percentile and maximum values of the occupancy-weighted average B-factor per residue. The column labelled ‘Q< 0.9’ lists the number of (and percentage) of residues with an average occupancy less than 0.9.

Mol	Chain	Analysed	<RSRZ>	#RSRZ>2	OWAB(Å <sup>2</sup> )	Q<0.9
1	A	454/470 (96%)	-0.62	4 (0%) 85 88	13, 27, 52, 73	0
1	B	455/470 (96%)	-0.34	7 (1%) 76 79	21, 39, 66, 72	0
All	All	909/940 (96%)	-0.48	11 (1%) 81 83	13, 33, 61, 73	0

All (11) RSRZ outliers are listed below:

Mol	Chain	Res	Type	RSRZ
1	B	458	ILE	5.3
1	A	1	THR	4.7
1	A	2	ILE	4.1
1	B	194	ASP	3.6
1	A	457	GLY	3.1
1	B	243	PRO	2.8
1	B	196	PRO	2.8
1	B	110	GLN	2.5
1	B	111	ALA	2.3
1	A	196	PRO	2.3
1	B	385	ILE	2.2

### 6.2 Non-standard residues in protein, DNA, RNA chains [i](#)

There are no non-standard protein/DNA/RNA residues in this entry.

### 6.3 Carbohydrates [i](#)

There are no carbohydrates in this entry.

## 6.4 Ligands [i](#)

In the following table, the Atoms column lists the number of modelled atoms in the group and the number defined in the chemical component dictionary. LLDF column lists the quality of electron density of the group with respect to its neighbouring residues in protein, DNA or RNA chains. The B-factors column lists the minimum, median, 95<sup>th</sup> percentile and maximum values of B factors of atoms in the group. The column labelled 'Q< 0.9' lists the number of atoms with occupancy less than 0.9.

Mol	Type	Chain	Res	Atoms	RSCC	RSR	LLDF	B-factors(Å <sup>2</sup> )	Q<0.9
2	PAM	A	471	18/18	0.73	0.27	8.77	47,50,60,61	0
3	HEM	A	472	43/43	0.98	0.11	-0.14	6,14,17,20	0
3	HEM	B	471	43/43	0.97	0.11	-0.53	18,23,28,30	0

## 6.5 Other polymers [i](#)

There are no such residues in this entry.