



Full wwPDB X-ray Structure Validation Report ⓘ

Feb 1, 2016 – 08:32 AM GMT

PDB ID : 3F06
Title : Crystal Structure Analysis of Human HDAC8 D101A Variant.
Authors : Dowling, D.P.; Gantt, S.L.; Gattis, S.G.; Fierke, C.A.; Christianson, D.W.
Deposited on : 2008-10-24
Resolution : 2.55 Å(reported)

This is a Full wwPDB X-ray Structure Validation Report for a publicly released PDB entry.
We welcome your comments at validation@mail.wwpdb.org
A user guide is available at
<http://wwpdb.org/validation/2016/XrayValidationReportHelp>
with specific help available everywhere you see the ⓘ symbol.

The following versions of software and data (see [references ⓘ](#)) were used in the production of this report:

MolProbity : 4.02b-467
Mogul : 1.7 (RC4), CSD as536be (2015)
Xtriage (Phenix) : 1.9-1692
EDS : rb-20026688
Percentile statistics : 20151230.v01 (using entries in the PDB archive December 30th 2015)
Refmac : 5.8.0135
CCP4 : 6.5.0
Ideal geometry (proteins) : Engh & Huber (2001)
Ideal geometry (DNA, RNA) : Parkinson et al. (1996)
Validation Pipeline (wwPDB-VP) : trunk26865

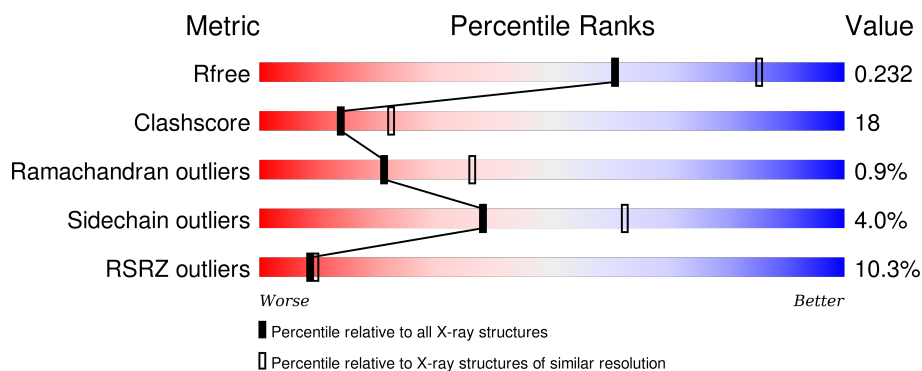
1 Overall quality at a glance

The following experimental techniques were used to determine the structure:

X-RAY DIFFRACTION

The reported resolution of this entry is 2.55 Å.

Percentile scores (ranging between 0-100) for global validation metrics of the entry are shown in the following graphic. The table shows the number of entries on which the scores are based.



Metric	Whole archive (#Entries)	Similar resolution (#Entries, resolution range(Å))
R_{free}	91344	4549 (2.58-2.50)
Clashscore	102246	5292 (2.58-2.50)
Ramachandran outliers	100387	5194 (2.58-2.50)
Sidechain outliers	100360	5196 (2.58-2.50)
RSRZ outliers	91569	4561 (2.58-2.50)

The table below summarises the geometric issues observed across the polymeric chains and their fit to the electron density. The red, orange, yellow and green segments on the lower bar indicate the fraction of residues that contain outliers for ≥ 3 , 2, 1 and 0 types of geometric quality criteria. A grey segment represents the fraction of residues that are not modelled. The numeric value for each fraction is indicated below the corresponding segment, with a dot representing fractions $\leq 5\%$. The upper red bar (where present) indicates the fraction of residues that have poor fit to the electron density. The numeric value is given above the bar.

Mol	Chain	Length	Quality of chain
1	A	388	<div> <div>10%</div> <div> <div></div> <div>61%</div> <div>28%</div> <div>• 8%</div> </div> </div>
1	B	388	<div> <div>9%</div> <div> <div></div> <div>63%</div> <div>26%</div> <div>• 8%</div> </div> </div>

The following table lists non-polymeric compounds, carbohydrate monomers and non-standard residues in protein, DNA, RNA chains that are outliers for geometric or electron-density-fit criteria:

Mol	Type	Chain	Res	Chirality	Geometry	Clashes	Electron density
5	BME	A	601[B]	-	-	-	X
5	BME	B	600[B]	-	-	-	X

2 Entry composition

There are 6 unique types of molecules in this entry. The entry contains 5698 atoms, of which 0 are hydrogens and 0 are deuteriums.

In the tables below, the ZeroOcc column contains the number of atoms modelled with zero occupancy, the AltConf column contains the number of residues with at least one atom in alternate conformation and the Trace column contains the number of residues modelled with at most 2 atoms.

- Molecule 1 is a protein called Histone deacetylase 8.

Mol	Chain	Residues	Atoms					ZeroOcc	AltConf	Trace
1	A	356	Total	C	N	O	S	0	1	0
			2783	1792	462	510	19			
1	B	356	Total	C	N	O	S	0	1	0
			2783	1792	462	510	19			

There are 24 discrepancies between the modelled and reference sequences:

Chain	Residue	Modelled	Actual	Comment	Reference
A	101	ALA	ASP	ENGINEERED	UNP Q9BY41
A	378	ILE	-	EXPRESSION TAG	UNP Q9BY41
A	379	GLU	-	EXPRESSION TAG	UNP Q9BY41
A	380	GLY	-	EXPRESSION TAG	UNP Q9BY41
A	381	ARG	-	EXPRESSION TAG	UNP Q9BY41
A	382	SER	-	EXPRESSION TAG	UNP Q9BY41
A	383	HIS	-	EXPRESSION TAG	UNP Q9BY41
A	384	HIS	-	EXPRESSION TAG	UNP Q9BY41
A	385	HIS	-	EXPRESSION TAG	UNP Q9BY41
A	386	HIS	-	EXPRESSION TAG	UNP Q9BY41
A	387	HIS	-	EXPRESSION TAG	UNP Q9BY41
A	388	HIS	-	EXPRESSION TAG	UNP Q9BY41
B	101	ALA	ASP	ENGINEERED	UNP Q9BY41
B	378	ILE	-	EXPRESSION TAG	UNP Q9BY41
B	379	GLU	-	EXPRESSION TAG	UNP Q9BY41
B	380	GLY	-	EXPRESSION TAG	UNP Q9BY41
B	381	ARG	-	EXPRESSION TAG	UNP Q9BY41
B	382	SER	-	EXPRESSION TAG	UNP Q9BY41
B	383	HIS	-	EXPRESSION TAG	UNP Q9BY41
B	384	HIS	-	EXPRESSION TAG	UNP Q9BY41
B	385	HIS	-	EXPRESSION TAG	UNP Q9BY41
B	386	HIS	-	EXPRESSION TAG	UNP Q9BY41
B	387	HIS	-	EXPRESSION TAG	UNP Q9BY41
B	388	HIS	-	EXPRESSION TAG	UNP Q9BY41

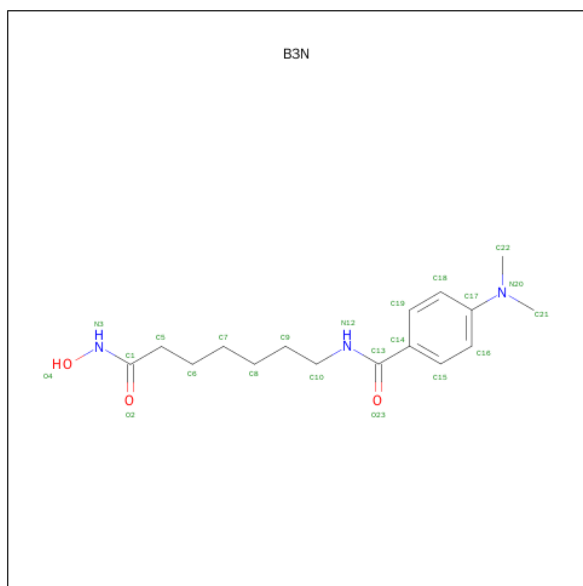
- Molecule 2 is ZINC ION (three-letter code: ZN) (formula: Zn).

Mol	Chain	Residues	Atoms		ZeroOcc	AltConf
2	B	1	Total	Zn	0	0
			1	1		
2	A	1	Total	Zn	0	0
			1	1		

- Molecule 3 is POTASSIUM ION (three-letter code: K) (formula: K).

Mol	Chain	Residues	Atoms		ZeroOcc	AltConf
3	B	2	Total	K	0	0
			2	2		
3	A	2	Total	K	0	0
			2	2		

- Molecule 4 is 4-(DIMETHYLAMINO)-N-[7-(HYDROXYAMINO)-7-OXOHEPTYL]BENZAMIDE (three-letter code: B3N) (formula: C₁₆H₂₅N₃O₃).



Mol	Chain	Residues	Atoms				ZeroOcc	AltConf
4	A	1	Total	C	N	O	0	1
			44	32	6	6		
4	B	1	Total	C	N	O	0	1
			44	32	6	6		

- Molecule 5 is BETA-MERCAPTOETHANOL (three-letter code: BME) (formula: C₂H₆OS).



Mol	Chain	Residues	Atoms				ZeroOcc	AltConf
5	A	1	Total	C	O	S	0	1
			4	2	1	1		
5	B	1	Total	C	O	S	0	1
			4	2	1	1		

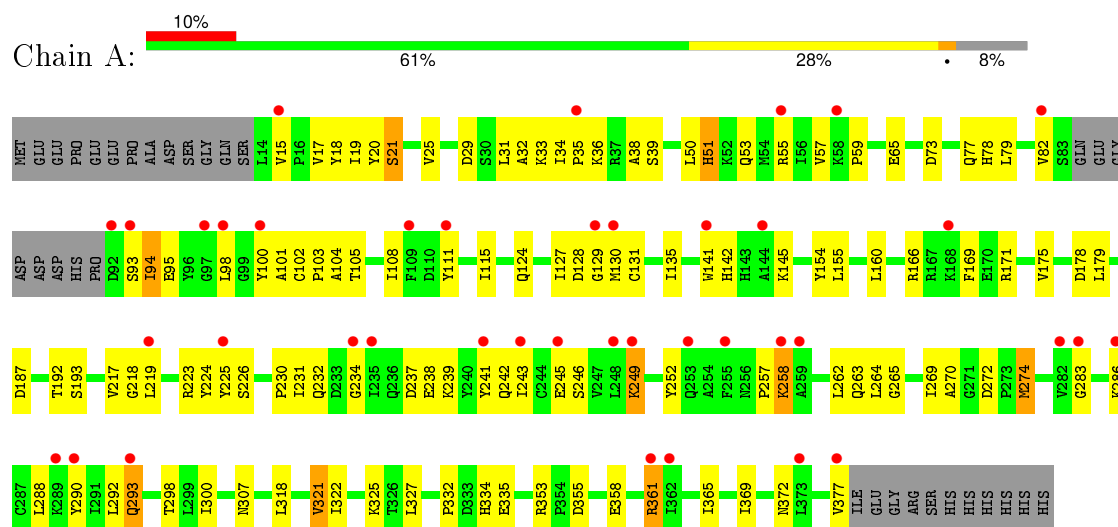
- Molecule 6 is water.

Mol	Chain	Residues	Atoms		ZeroOcc	AltConf
6	A	16	Total	O	0	0
			16	16		
6	B	14	Total	O	0	0
			14	14		

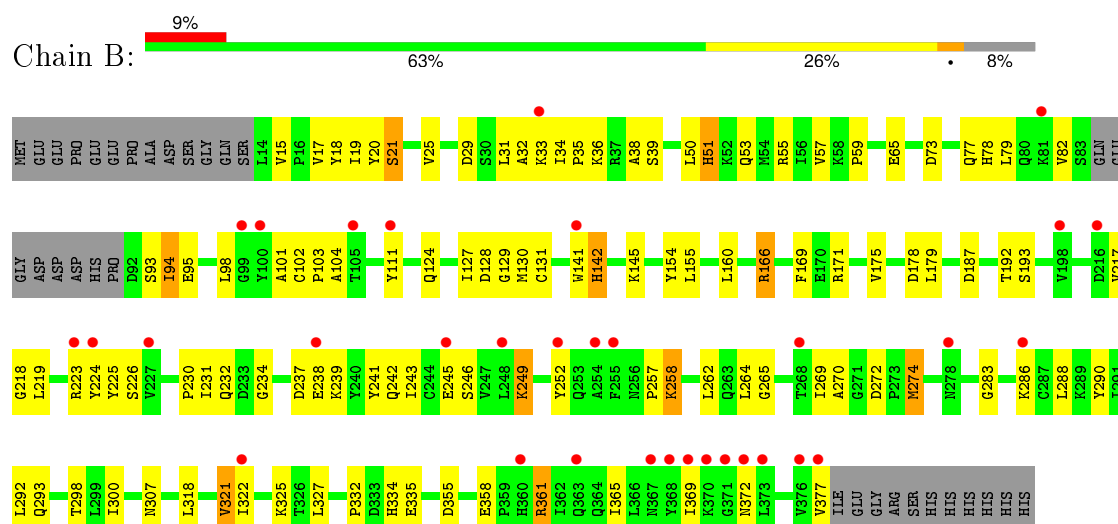
3 Residue-property plots

These plots are drawn for all protein, RNA and DNA chains in the entry. The first graphic for a chain summarises the proportions of errors displayed in the second graphic. The second graphic shows the sequence view annotated by issues in geometry and electron density. Residues are color-coded according to the number of geometric quality criteria for which they contain at least one outlier: green = 0, yellow = 1, orange = 2 and red = 3 or more. A red dot above a residue indicates a poor fit to the electron density ($RSRZ > 2$). Stretches of 2 or more consecutive residues without any outlier are shown as a green connector. Residues present in the sample, but not in the model, are shown in grey.

• Molecule 1: Histone deacetylase 8



• Molecule 1: Histone deacetylase 8



4 Data and refinement statistics

Property	Value	Source
Space group	P 1 21 1	Depositor
Cell constants a, b, c, α , β , γ	55.99Å 85.88Å 94.83Å 90.00° 93.68° 90.00°	Depositor
Resolution (Å)	47.32 – 2.55 49.53 – 2.56	Depositor EDS
% Data completeness (in resolution range)	93.4 (47.32-2.55) 97.8 (49.53-2.56)	Depositor EDS
R_{merge}	0.10	Depositor
R_{sym}	(Not available)	Depositor
$\langle I/\sigma(I) \rangle$ ¹	11.40 (at 2.54Å)	Xtriage
Refinement program	CNS 1.2	Depositor
R, R_{free}	0.228 , 0.259 0.244 , 0.232	Depositor DCC
R_{free} test set	1446 reflections (5.10%)	DCC
Wilson B-factor (Å ²)	61.3	Xtriage
Anisotropy	0.976	Xtriage
Bulk solvent k_{sol} (e/Å ³), B_{sol} (Å ²)	0.35 , 61.8	EDS
Estimated twinning fraction	No twinning to report.	Xtriage
L-test for twinning ²	$\langle L \rangle = 0.50$, $\langle L^2 \rangle = 0.33$	Xtriage
Outliers	0 of 28335 reflections	Xtriage
F_o, F_c correlation	0.94	EDS
Total number of atoms	5698	wwPDB-VP
Average B, all atoms (Å ²)	82.0	wwPDB-VP

Xtriage's analysis on translational NCS is as follows: *The largest off-origin peak in the Patterson function is 4.19% of the height of the origin peak. No significant pseudotranslation is detected.*

¹Intensities estimated from amplitudes.

²Theoretical values of $\langle |L| \rangle$, $\langle L^2 \rangle$ for acentric reflections are 0.5, 0.375 respectively for untwinned datasets, and 0.333, 0.2 for perfectly twinned datasets.

5 Model quality [i](#)

5.1 Standard geometry [i](#)

Bond lengths and bond angles in the following residue types are not validated in this section: K, B3N, ZN, BME

The Z score for a bond length (or angle) is the number of standard deviations the observed value is removed from the expected value. A bond length (or angle) with $|Z| > 5$ is considered an outlier worth inspection. RMSZ is the root-mean-square of all Z scores of the bond lengths (or angles).

Mol	Chain	Bond lengths		Bond angles	
		RMSZ	$\# Z > 5$	RMSZ	$\# Z > 5$
1	A	0.42	0/2857	0.64	1/3876 (0.0%)
1	B	0.41	0/2857	0.63	2/3876 (0.1%)
All	All	0.42	0/5714	0.63	3/7752 (0.0%)

There are no bond length outliers.

All (3) bond angle outliers are listed below:

Mol	Chain	Res	Type	Atoms	Z	Observed(°)	Ideal(°)
1	A	307	ASN	N-CA-C	-5.23	96.88	111.00
1	B	307	ASN	N-CA-C	-5.12	97.18	111.00
1	B	142	HIS	N-CA-C	5.07	124.69	111.00

There are no chirality outliers.

There are no planarity outliers.

5.2 Too-close contacts [i](#)

In the following table, the Non-H and H(model) columns list the number of non-hydrogen atoms and hydrogen atoms in the chain respectively. The H(added) column lists the number of hydrogen atoms added and optimized by MolProbity. The Clashes column lists the number of clashes within the asymmetric unit, whereas Symm-Clashes lists symmetry related clashes.

Mol	Chain	Non-H	H(model)	H(added)	Clashes	Symm-Clashes
1	A	2783	0	2750	106	0
1	B	2783	0	2751	101	0
2	A	1	0	0	0	0
2	B	1	0	0	0	0
3	A	2	0	0	0	0
3	B	2	0	0	0	0

Continued on next page...

Continued from previous page...

Mol	Chain	Non-H	H(model)	H(added)	Clashes	Symm-Clashes
4	A	44	0	48	1	0
4	B	44	0	48	0	0
5	A	4	0	6	0	0
5	B	4	0	6	0	0
6	A	16	0	0	1	0
6	B	14	0	0	0	0
All	All	5698	0	5609	207	0

The all-atom clashscore is defined as the number of clashes found per 1000 atoms (including hydrogen atoms). The all-atom clashscore for this structure is 18.

All (207) close contacts within the same asymmetric unit are listed below, sorted by their clash magnitude.

Atom-1	Atom-2	Interatomic distance (Å)	Clash overlap (Å)
1:B:73:ASP:O	1:B:77:GLN:HG2	1.79	0.81
1:A:73:ASP:O	1:A:77:GLN:HG2	1.80	0.81
1:A:258:LYS:HE3	1:A:258:LYS:HA	1.69	0.75
1:B:258:LYS:HE3	1:B:258:LYS:HA	1.68	0.73
1:B:292:LEU:HD11	1:B:322:ILE:HD13	1.72	0.72
1:A:18:TYR:CE1	1:A:20:TYR:HB2	2.25	0.72
1:A:155:LEU:HD21	1:A:160:LEU:HD11	1.71	0.71
1:A:249:LYS:NZ	1:A:249:LYS:HA	2.06	0.71
1:B:18:TYR:CE1	1:B:20:TYR:HB2	2.26	0.70
1:B:155:LEU:HD21	1:B:160:LEU:HD11	1.72	0.70
1:B:31:LEU:HB2	1:B:111:TYR:CZ	2.27	0.70
1:B:249:LYS:HA	1:B:249:LYS:NZ	2.06	0.70
1:A:292:LEU:HD11	1:A:322:ILE:HD13	1.72	0.69
1:A:31:LEU:HB2	1:A:111:TYR:CZ	2.28	0.69
1:A:365:ILE:O	1:A:369:ILE:HG12	1.93	0.68
1:A:111:TYR:CE1	1:A:141[B]:TRP:HH2	2.12	0.67
1:B:365:ILE:O	1:B:369:ILE:HG12	1.93	0.67
1:A:31:LEU:HD13	1:A:33:LYS:H	1.62	0.66
1:A:358:GLU:HG2	1:A:361:ARG:HB2	1.78	0.65
1:A:249:LYS:HA	1:A:249:LYS:HZ2	1.60	0.65
1:B:111:TYR:CE1	1:B:141[B]:TRP:HH2	2.15	0.65
1:B:358:GLU:HG2	1:B:361:ARG:HB2	1.77	0.64
1:B:31:LEU:HD13	1:B:33:LYS:H	1.62	0.63
1:A:93:SER:C	1:A:95:GLU:H	2.04	0.61
1:B:93:SER:C	1:B:95:GLU:H	2.04	0.61
1:A:51:HIS:CD2	1:A:51:HIS:H	2.19	0.58
1:B:218:GLY:O	1:B:219:LEU:HD13	2.04	0.58

Continued on next page...

Continued from previous page...

Atom-1	Atom-2	Interatomic distance (Å)	Clash overlap (Å)
1:B:82:VAL:CG1	1:B:104:ALA:HB1	2.34	0.58
1:A:31:LEU:HD23	1:A:111:TYR:HE1	1.69	0.57
1:B:31:LEU:HB2	1:B:111:TYR:OH	2.03	0.57
1:A:218:GLY:O	1:A:219:LEU:HD13	2.05	0.57
1:B:93:SER:HB3	1:B:98:LEU:HB2	1.87	0.57
1:B:51:HIS:CD2	1:B:51:HIS:H	2.21	0.57
1:B:31:LEU:HD23	1:B:111:TYR:HE1	1.69	0.56
1:A:82:VAL:CG1	1:A:104:ALA:HB1	2.34	0.56
1:A:31:LEU:HB2	1:A:111:TYR:OH	2.05	0.56
1:A:93:SER:HB3	1:A:98:LEU:HB2	1.87	0.56
1:B:171:ARG:HH21	1:B:171:ARG:HG3	1.72	0.55
1:B:31:LEU:HD11	1:B:33:LYS:HB2	1.89	0.55
1:A:272:ASP:OD2	1:A:274:MET:HB2	2.07	0.55
1:A:145:LYS:HE2	1:A:187:ASP:OD1	2.07	0.55
1:A:223:ARG:O	1:A:224:TYR:HB2	2.08	0.54
1:A:31:LEU:HD11	1:A:33:LYS:HB2	1.89	0.54
1:B:272:ASP:OD2	1:B:274:MET:HB2	2.08	0.54
1:A:246:SER:O	1:A:249:LYS:HB3	2.07	0.54
1:B:246:SER:O	1:B:249:LYS:HB3	2.08	0.54
1:B:223:ARG:O	1:B:224:TYR:HB2	2.08	0.54
1:B:239:LYS:O	1:B:243:ILE:HG13	2.07	0.54
1:B:145:LYS:HE2	1:B:187:ASP:OD1	2.08	0.53
1:B:31:LEU:HB2	1:B:111:TYR:CE1	2.42	0.53
1:A:100:TYR:CE2	4:A:500[A]:B3N:H19	2.44	0.53
1:A:31:LEU:HB2	1:A:111:TYR:CE1	2.43	0.53
1:A:171:ARG:HG3	1:A:171:ARG:HH21	1.73	0.53
1:A:288:LEU:HD21	1:A:322:ILE:HD11	1.90	0.53
1:A:179:LEU:CD2	1:A:274:MET:HG2	2.37	0.53
1:A:31:LEU:CD1	1:A:33:LYS:HB2	2.39	0.53
1:A:298:THR:HG22	1:A:300:ILE:HD12	1.90	0.53
1:B:288:LEU:HD21	1:B:322:ILE:HD11	1.92	0.52
1:A:288:LEU:HD21	1:A:322:ILE:CD1	2.39	0.52
1:B:179:LEU:CD2	1:B:274:MET:HG2	2.39	0.52
1:B:249:LYS:HA	1:B:249:LYS:HZ2	1.71	0.52
1:B:31:LEU:CD1	1:B:33:LYS:HB2	2.39	0.52
1:B:102:CYS:HB3	1:B:154:TYR:CE2	2.44	0.52
1:B:298:THR:HG22	1:B:300:ILE:HD12	1.91	0.52
1:B:288:LEU:HD21	1:B:322:ILE:CD1	2.40	0.52
1:B:249:LYS:HA	1:B:249:LYS:HZ3	1.73	0.52
1:A:239:LYS:O	1:A:243:ILE:HG13	2.09	0.51
1:A:193:SER:HB2	1:A:225:TYR:CE2	2.45	0.51

Continued on next page...

Continued from previous page...

Atom-1	Atom-2	Interatomic distance (Å)	Clash overlap (Å)
1:A:102:CYS:HB3	1:A:154:TYR:CE2	2.45	0.51
1:B:193:SER:HB2	1:B:225:TYR:CE2	2.45	0.51
1:B:78:HIS:O	1:B:82:VAL:HG23	2.11	0.51
1:A:31:LEU:HD13	1:A:33:LYS:N	2.26	0.50
1:B:238:GLU:HG2	1:B:242:GLN:NE2	2.27	0.50
1:A:51:HIS:CD2	1:A:51:HIS:N	2.77	0.50
1:A:264:LEU:HD13	1:A:318:LEU:HD13	1.93	0.50
1:B:128:ASP:C	1:B:130:MET:H	2.15	0.50
1:B:31:LEU:HD13	1:B:33:LYS:N	2.26	0.50
1:B:169:PHE:HD2	1:B:258:LYS:HB3	1.76	0.49
1:A:53:GLN:NE2	1:A:325:LYS:HE3	2.27	0.49
1:B:20:TYR:CG	1:B:21:SER:N	2.79	0.49
1:A:169:PHE:HD2	1:A:258:LYS:HB3	1.77	0.49
1:A:20:TYR:CG	1:A:21:SER:N	2.79	0.49
1:B:264:LEU:HD13	1:B:318:LEU:HD13	1.93	0.49
1:A:78:HIS:O	1:A:82:VAL:HG23	2.12	0.49
1:B:175:VAL:HB	1:B:262:LEU:HD13	1.94	0.49
1:B:51:HIS:CD2	1:B:51:HIS:N	2.79	0.49
1:A:332:PRO:O	1:A:334:HIS:HD2	1.96	0.48
1:B:332:PRO:O	1:B:334:HIS:HD2	1.96	0.48
1:B:234:GLY:HA3	1:B:355:ASP:HA	1.95	0.48
1:A:234:GLY:HA3	1:A:355:ASP:HA	1.94	0.48
1:A:17:VAL:HG23	1:A:131:CYS:SG	2.53	0.48
1:A:238:GLU:HG2	1:A:242:GLN:NE2	2.28	0.48
1:B:53:GLN:NE2	1:B:325:LYS:HE3	2.27	0.48
1:A:128:ASP:C	1:A:130:MET:H	2.15	0.48
1:A:29:ASP:OD1	1:A:39:SER:OG	2.31	0.48
1:A:175:VAL:HB	1:A:262:LEU:HD13	1.94	0.48
1:B:258:LYS:CE	1:B:258:LYS:HA	2.42	0.47
1:A:128:ASP:O	1:A:130:MET:N	2.48	0.47
1:B:29:ASP:OD1	1:B:39:SER:OG	2.31	0.47
1:A:377:VAL:O	1:A:377:VAL:HG12	2.13	0.47
1:B:128:ASP:O	1:B:130:MET:N	2.48	0.47
1:B:17:VAL:HG23	1:B:131:CYS:SG	2.54	0.47
1:A:15:VAL:HG13	1:A:15:VAL:O	2.15	0.47
1:B:377:VAL:HG12	1:B:377:VAL:O	2.14	0.47
1:A:32:ALA:O	1:A:35:PRO:HD3	2.15	0.47
1:A:94:ILE:O	1:A:94:ILE:HG22	2.15	0.47
1:B:31:LEU:HD12	1:B:34:ILE:HG12	1.96	0.47
1:A:31:LEU:HD12	1:A:34:ILE:HG12	1.96	0.47
1:A:17:VAL:HG13	1:A:57:VAL:CG2	2.45	0.47

Continued on next page...

Continued from previous page...

Atom-1	Atom-2	Interatomic distance (Å)	Clash overlap (Å)
1:A:258:LYS:HA	1:A:258:LYS:CE	2.42	0.46
1:A:179:LEU:HD23	1:A:274:MET:HG2	1.97	0.46
1:B:101:ALA:O	1:B:103:PRO:HD3	2.16	0.46
1:B:32:ALA:O	1:B:35:PRO:HD3	2.16	0.46
1:B:94:ILE:HG22	1:B:94:ILE:O	2.15	0.46
1:B:288:LEU:HD23	1:B:321:VAL:CG2	2.46	0.46
1:A:31:LEU:HD23	1:A:111:TYR:CE1	2.50	0.46
1:B:298:THR:HG22	1:B:300:ILE:CD1	2.45	0.46
1:B:50:LEU:HD21	1:B:327:LEU:HD21	1.97	0.46
1:A:288:LEU:HD23	1:A:321:VAL:CG2	2.45	0.46
1:A:298:THR:HG22	1:A:300:ILE:CD1	2.45	0.46
1:B:231:ILE:CG2	1:B:232:GLN:N	2.79	0.46
1:B:15:VAL:HG13	1:B:15:VAL:O	2.15	0.46
1:B:17:VAL:HG13	1:B:57:VAL:CG2	2.46	0.45
1:A:50:LEU:HD21	1:A:327:LEU:HD21	1.98	0.45
1:A:358:GLU:O	1:A:358:GLU:HG2	2.17	0.45
1:B:231:ILE:HG22	1:B:232:GLN:N	2.30	0.45
1:A:269:ILE:HD12	1:A:269:ILE:N	2.32	0.45
1:B:179:LEU:HD23	1:B:274:MET:HG2	1.98	0.45
1:A:55:ARG:HG3	1:A:55:ARG:HH11	1.82	0.45
1:B:31:LEU:HD23	1:B:111:TYR:CE1	2.50	0.45
1:A:217:VAL:C	1:A:226:SER:HB2	2.37	0.45
1:A:95:GLU:O	1:A:95:GLU:HG2	2.17	0.44
1:A:231:ILE:HG22	1:A:232:GLN:N	2.31	0.44
1:B:358:GLU:HG2	1:B:358:GLU:O	2.18	0.44
1:A:101:ALA:O	1:A:103:PRO:HD3	2.16	0.44
1:A:288:LEU:HD23	1:A:321:VAL:HG22	1.99	0.44
1:A:53:GLN:HE22	1:A:325:LYS:HE3	1.82	0.44
1:B:53:GLN:HE22	1:B:325:LYS:HE3	1.83	0.44
1:B:269:ILE:N	1:B:269:ILE:HD12	2.32	0.44
1:B:288:LEU:HD23	1:B:321:VAL:HG22	1.99	0.44
1:A:98:LEU:HA	1:A:102:CYS:O	2.18	0.44
1:A:231:ILE:CG2	1:A:232:GLN:N	2.80	0.44
1:A:353:ARG:NH2	6:A:402:HOH:O	2.35	0.44
1:A:245:GLU:HG2	1:A:290:TYR:CE1	2.53	0.44
1:A:241:TYR:CE2	1:A:286:LYS:HB3	2.54	0.43
1:B:193:SER:HB2	1:B:225:TYR:CZ	2.53	0.43
1:B:19:ILE:CG2	1:B:59:PRO:HB3	2.48	0.43
1:B:217:VAL:C	1:B:226:SER:HB2	2.38	0.43
1:B:230:PRO:HG2	1:B:365:ILE:HD13	2.01	0.43
1:B:95:GLU:O	1:B:95:GLU:HG2	2.18	0.43

Continued on next page...

Continued from previous page...

Atom-1	Atom-2	Interatomic distance (Å)	Clash overlap (Å)
1:B:98:LEU:HA	1:B:102:CYS:O	2.18	0.43
1:A:53:GLN:HE22	1:A:325:LYS:CE	2.32	0.43
1:A:237:ASP:OD1	1:A:283:GLY:HA3	2.19	0.43
1:A:358:GLU:CG	1:A:361:ARG:HB2	2.49	0.43
1:B:35:PRO:O	1:B:36:LYS:HB2	2.19	0.43
1:B:245:GLU:HG2	1:B:290:TYR:CE1	2.54	0.43
1:A:19:ILE:CG2	1:A:59:PRO:HB3	2.49	0.43
1:A:293:GLN:HE21	1:A:293:GLN:HB3	1.55	0.43
1:B:241:TYR:CE2	1:B:286:LYS:HB3	2.54	0.43
1:B:252:TYR:CD1	1:B:257:PRO:HD2	2.54	0.43
1:B:55:ARG:HH11	1:B:55:ARG:HG3	1.83	0.42
1:A:35:PRO:O	1:A:36:LYS:HB2	2.18	0.42
1:A:178:ASP:HB2	1:A:263:GLN:OE1	2.19	0.42
1:A:361:ARG:HH21	1:A:365:ILE:CG1	2.33	0.42
1:A:193:SER:HB2	1:A:225:TYR:CZ	2.54	0.42
1:B:238:GLU:HG2	1:B:242:GLN:HE21	1.84	0.42
1:B:155:LEU:HD21	1:B:160:LEU:CD1	2.45	0.42
1:B:93:SER:C	1:B:95:GLU:N	2.72	0.42
1:A:82:VAL:HG13	1:A:104:ALA:HB1	2.02	0.42
1:B:53:GLN:HE22	1:B:325:LYS:CE	2.33	0.42
1:A:252:TYR:CD1	1:A:257:PRO:HD2	2.55	0.42
1:A:335:GLU:HG2	1:A:335:GLU:O	2.20	0.42
1:B:361:ARG:HH21	1:B:365:ILE:CG1	2.33	0.42
1:B:269:ILE:HG22	1:B:270:ALA:O	2.20	0.42
1:B:335:GLU:HG2	1:B:335:GLU:O	2.19	0.42
1:B:224:TYR:HE1	1:B:372:ASN:ND2	2.18	0.42
1:A:223:ARG:HG2	1:A:224:TYR:CD2	2.55	0.41
1:A:55:ARG:NH1	1:A:55:ARG:HG3	2.35	0.41
1:B:178:ASP:OD1	1:B:265:GLY:HA3	2.20	0.41
1:B:358:GLU:CG	1:B:361:ARG:HB2	2.48	0.41
1:B:223:ARG:HG2	1:B:224:TYR:CD2	2.55	0.41
1:A:29:ASP:OD2	1:A:38:ALA:HB3	2.21	0.41
1:A:111:TYR:CE1	1:A:141[B]:TRP:CH2	3.02	0.41
1:A:269:ILE:HG22	1:A:270:ALA:O	2.20	0.41
1:B:55:ARG:NH1	1:B:55:ARG:HG3	2.35	0.41
1:B:29:ASP:OD2	1:B:38:ALA:HB3	2.20	0.41
1:A:20:TYR:HE1	1:A:25:VAL:HG21	1.86	0.41
1:A:238:GLU:HG2	1:A:242:GLN:HE21	1.85	0.41
1:A:115:ILE:HD12	1:A:141[B]:TRP:CH2	2.56	0.41
1:B:93:SER:O	1:B:95:GLU:N	2.52	0.41
1:A:230:PRO:HG2	1:A:365:ILE:HD13	2.01	0.41

Continued on next page...

Continued from previous page...

Atom-1	Atom-2	Interatomic distance (Å)	Clash overlap (Å)
1:A:105:THR:HB	1:A:108:ILE:HG23	2.03	0.41
1:B:20:TYR:HE1	1:B:25:VAL:HG21	1.86	0.41
1:B:82:VAL:HG13	1:B:104:ALA:HB1	2.01	0.41
1:A:178:ASP:OD1	1:A:265:GLY:HA3	2.21	0.41
1:B:166:ARG:HD2	1:B:166:ARG:HA	1.87	0.41
1:A:19:ILE:HG12	1:A:135:ILE:O	2.21	0.41
1:A:124:GLN:HA	1:A:127:ILE:HG12	2.03	0.41
1:A:93:SER:C	1:A:95:GLU:N	2.71	0.40
1:A:128:ASP:C	1:A:130:MET:N	2.74	0.40
1:A:224:TYR:HE1	1:A:372:ASN:ND2	2.19	0.40
1:A:93:SER:O	1:A:95:GLU:N	2.52	0.40
1:B:124:GLN:HA	1:B:127:ILE:HG12	2.04	0.40
1:B:237:ASP:OD1	1:B:283:GLY:HA3	2.21	0.40

There are no symmetry-related clashes.

5.3 Torsion angles [i](#)

5.3.1 Protein backbone [i](#)

In the following table, the Percentiles column shows the percent Ramachandran outliers of the chain as a percentile score with respect to all X-ray entries followed by that with respect to entries of similar resolution.

The Analysed column shows the number of residues for which the backbone conformation was analysed, and the total number of residues.

Mol	Chain	Analysed	Favoured	Allowed	Outliers	Percentiles	
1	A	353/388 (91%)	327 (93%)	23 (6%)	3 (1%)	24	40
1	B	353/388 (91%)	327 (93%)	23 (6%)	3 (1%)	24	40
All	All	706/776 (91%)	654 (93%)	46 (6%)	6 (1%)	21	40

All (6) Ramachandran outliers are listed below:

Mol	Chain	Res	Type
1	A	94	ILE
1	B	94	ILE
1	A	129	GLY
1	B	129	GLY
1	A	21	SER

Continued on next page...

Continued from previous page...

Mol	Chain	Res	Type
1	B	21	SER

5.3.2 Protein sidechains ⓘ

In the following table, the Percentiles column shows the percent sidechain outliers of the chain as a percentile score with respect to all X-ray entries followed by that with respect to entries of similar resolution.

The Analysed column shows the number of residues for which the sidechain conformation was analysed, and the total number of residues.

Mol	Chain	Analysed	Rotameric	Outliers	Percentiles	
1	A	298/325 (92%)	286 (96%)	12 (4%)	38	62
1	B	298/325 (92%)	286 (96%)	12 (4%)	38	62
All	All	596/650 (92%)	572 (96%)	24 (4%)	38	62

All (24) residues with a non-rotameric sidechain are listed below:

Mol	Chain	Res	Type
1	A	51	HIS
1	A	65	GLU
1	A	79	LEU
1	A	142	HIS
1	A	166	ARG
1	A	192	THR
1	A	249	LYS
1	A	258	LYS
1	A	274	MET
1	A	293	GLN
1	A	321	VAL
1	A	361	ARG
1	B	51	HIS
1	B	65	GLU
1	B	79	LEU
1	B	142	HIS
1	B	166	ARG
1	B	192	THR
1	B	249	LYS
1	B	258	LYS
1	B	274	MET
1	B	293	GLN

Continued on next page...

Continued from previous page...

Mol	Chain	Res	Type
1	B	321	VAL
1	B	361	ARG

Some sidechains can be flipped to improve hydrogen bonding and reduce clashes. All (15) such sidechains are listed below:

Mol	Chain	Res	Type
1	A	51	HIS
1	A	53	GLN
1	A	242	GLN
1	A	256	ASN
1	A	293	GLN
1	A	364	GLN
1	A	372	ASN
1	B	51	HIS
1	B	53	GLN
1	B	242	GLN
1	B	256	ASN
1	B	293	GLN
1	B	334	HIS
1	B	364	GLN
1	B	372	ASN

5.3.3 RNA [i](#)

There are no RNA molecules in this entry.

5.4 Non-standard residues in protein, DNA, RNA chains [i](#)

There are no non-standard protein/DNA/RNA residues in this entry.

5.5 Carbohydrates [i](#)

There are no carbohydrates in this entry.

5.6 Ligand geometry [i](#)

Of 12 ligands modelled in this entry, 6 are monoatomic - leaving 6 for Mogul analysis.

In the following table, the Counts columns list the number of bonds (or angles) for which Mogul statistics could be retrieved, the number of bonds (or angles) that are observed in the model and the number of bonds (or angles) that are defined in the chemical component dictionary. The Link column lists molecule types, if any, to which the group is linked. The Z score for a bond length (or angle) is the number of standard deviations the observed value is removed from the expected value. A bond length (or angle) with $|Z| > 2$ is considered an outlier worth inspection. RMSZ is the root-mean-square of all Z scores of the bond lengths (or angles).

Mol	Type	Chain	Res	Link	Bond lengths			Bond angles		
					Counts	RMSZ	$\# Z > 2$	Counts	RMSZ	$\# Z > 2$
4	B3N	A	500[A]	2	22,22,22	2.81	6 (27%)	26,27,27	0.88	1 (3%)
4	B3N	A	500[B]	2	22,22,22	2.82	7 (31%)	26,27,27	0.91	0
5	BME	A	601[B]	-	3,3,3	0.42	0	2,2,2	0.31	0
4	B3N	B	501[A]	2	22,22,22	2.92	7 (31%)	26,27,27	0.98	1 (3%)
4	B3N	B	501[B]	2	22,22,22	2.82	7 (31%)	26,27,27	0.91	0
5	BME	B	600[B]	-	3,3,3	0.52	0	2,2,2	0.29	0

In the following table, the Chirals column lists the number of chiral outliers, the number of chiral centers analysed, the number of these observed in the model and the number defined in the chemical component dictionary. Similar counts are reported in the Torsion and Rings columns. '-' means no outliers of that kind were identified.

Mol	Type	Chain	Res	Link	Chirals	Torsions	Rings
4	B3N	A	500[A]	2	-	0/20/20/20	0/1/1/1
4	B3N	A	500[B]	2	-	0/20/20/20	0/1/1/1
5	BME	A	601[B]	-	-	0/1/1/1	0/0/0/0
4	B3N	B	501[A]	2	-	0/20/20/20	0/1/1/1
4	B3N	B	501[B]	2	-	0/20/20/20	0/1/1/1
5	BME	B	600[B]	-	-	0/1/1/1	0/0/0/0

All (27) bond length outliers are listed below:

Mol	Chain	Res	Type	Atoms	Z	Observed(Å)	Ideal(Å)
4	A	500[B]	B3N	O4-N3	-8.92	1.23	1.39
4	B	501[A]	B3N	O4-N3	-8.87	1.23	1.39
4	A	500[A]	B3N	O4-N3	-8.85	1.23	1.39
4	B	501[B]	B3N	O4-N3	-8.66	1.24	1.39
4	B	501[B]	B3N	C19-C14	2.24	1.43	1.39
4	A	500[A]	B3N	C16-C17	2.37	1.43	1.39
4	A	500[B]	B3N	C16-C17	2.52	1.44	1.39
4	B	501[B]	B3N	C16-C17	2.57	1.44	1.39
4	B	501[B]	B3N	C16-C15	2.59	1.43	1.38
4	A	500[B]	B3N	C19-C14	2.62	1.43	1.39
4	A	500[B]	B3N	C17-N20	2.63	1.43	1.37

Continued on next page...

Continued from previous page...

Mol	Chain	Res	Type	Atoms	Z	Observed(Å)	Ideal(Å)
4	A	500[B]	B3N	C15-C14	2.63	1.43	1.39
4	B	501[A]	B3N	C16-C17	2.67	1.44	1.39
4	A	500[A]	B3N	C15-C14	2.67	1.43	1.39
4	A	500[B]	B3N	C16-C15	2.80	1.43	1.38
4	B	501[B]	B3N	C17-N20	2.80	1.44	1.37
4	B	501[A]	B3N	C19-C14	2.87	1.44	1.39
4	B	501[A]	B3N	C17-N20	2.88	1.44	1.37
4	B	501[A]	B3N	C15-C14	2.91	1.44	1.39
4	A	500[A]	B3N	C16-C15	2.93	1.44	1.38
4	B	501[B]	B3N	C15-C14	2.93	1.44	1.39
4	A	500[A]	B3N	C17-N20	2.94	1.44	1.37
4	B	501[A]	B3N	C16-C15	2.99	1.44	1.38
4	A	500[A]	B3N	C18-C17	7.39	1.53	1.39
4	A	500[B]	B3N	C18-C17	7.45	1.54	1.39
4	B	501[B]	B3N	C18-C17	7.63	1.54	1.39
4	B	501[A]	B3N	C18-C17	7.69	1.54	1.39

All (2) bond angle outliers are listed below:

Mol	Chain	Res	Type	Atoms	Z	Observed(°)	Ideal(°)
4	A	500[A]	B3N	C10-N12-C13	2.11	126.88	122.15
4	B	501[A]	B3N	C10-N12-C13	2.14	126.94	122.15

There are no chirality outliers.

There are no torsion outliers.

There are no ring outliers.

1 monomer is involved in 1 short contact:

Mol	Chain	Res	Type	Clashes	Symm-Clashes
4	A	500[A]	B3N	1	0

5.7 Other polymers [i](#)

There are no such residues in this entry.

5.8 Polymer linkage issues [i](#)

There are no chain breaks in this entry.

6 Fit of model and data ⓘ

6.1 Protein, DNA and RNA chains ⓘ

In the following table, the column labelled ‘#RSRZ> 2’ contains the number (and percentage) of RSRZ outliers, followed by percent RSRZ outliers for the chain as percentile scores relative to all X-ray entries and entries of similar resolution. The OWAB column contains the minimum, median, 95th percentile and maximum values of the occupancy-weighted average B-factor per residue. The column labelled ‘Q< 0.9’ lists the number of (and percentage) of residues with an average occupancy less than 0.9.

Mol	Chain	Analysed	<RSRZ>	#RSRZ>2	OWAB(Å ²)	Q<0.9
1	A	356/388 (91%)	0.83	40 (11%) 7 8	46, 81, 108, 139	0
1	B	356/388 (91%)	0.75	33 (9%) 11 12	50, 81, 109, 139	0
All	All	712/776 (91%)	0.79	73 (10%) 9 9	46, 81, 109, 139	0

All (73) RSRZ outliers are listed below:

Mol	Chain	Res	Type	RSRZ
1	B	322	ILE	5.6
1	A	93	SER	5.0
1	A	377	VAL	4.9
1	B	370	LYS	4.9
1	B	373	LEU	4.9
1	A	92	ASP	4.8
1	A	282	VAL	4.8
1	A	219	LEU	4.8
1	B	368	TYR	4.7
1	B	372	ASN	4.5
1	B	377	VAL	4.0
1	A	100	TYR	3.8
1	A	362	ILE	3.7
1	A	253	GLN	3.7
1	B	363	GLN	3.6
1	B	248	LEU	3.6
1	A	168	LYS	3.4
1	A	243	ILE	3.3
1	B	111	TYR	3.3
1	A	141[A]	TRP	3.2
1	A	225	TYR	3.2
1	B	141[A]	TRP	3.2
1	A	15	VAL	3.1
1	B	33	LYS	3.1

Continued on next page...

Continued from previous page...

Mol	Chain	Res	Type	RSRZ
1	B	99	GLY	3.0
1	B	238	GLU	3.0
1	A	111	TYR	3.0
1	A	259	ALA	3.0
1	A	82	VAL	3.0
1	A	248	LEU	2.7
1	B	367	ASN	2.7
1	A	234	GLY	2.7
1	A	97	GLY	2.7
1	B	245	GLU	2.6
1	A	241	TYR	2.6
1	A	293	GLN	2.5
1	B	371	GLY	2.5
1	B	100	TYR	2.5
1	A	258	LYS	2.5
1	A	290	TYR	2.5
1	A	373	LEU	2.4
1	B	223	ARG	2.4
1	B	227	VAL	2.4
1	B	224	TYR	2.4
1	A	249	LYS	2.4
1	A	286	LYS	2.4
1	A	289	LYS	2.4
1	A	98	LEU	2.4
1	A	130	MET	2.4
1	B	278	ASN	2.3
1	B	255	PHE	2.3
1	B	376	VAL	2.3
1	A	235	ILE	2.3
1	B	369	ILE	2.3
1	A	58	LYS	2.3
1	B	252	TYR	2.3
1	A	245	GLU	2.2
1	A	129	GLY	2.2
1	B	286	LYS	2.2
1	A	109	PHE	2.2
1	B	81	LYS	2.2
1	A	35	PRO	2.2
1	A	144	ALA	2.1
1	A	255	PHE	2.1
1	B	268	THR	2.1
1	B	198	VAL	2.1

Continued on next page...

Continued from previous page...

Mol	Chain	Res	Type	RSRZ
1	B	216	ASP	2.1
1	B	254	ALA	2.1
1	B	105	THR	2.1
1	A	361	ARG	2.1
1	A	283	GLY	2.0
1	B	360	HIS	2.0
1	A	55	ARG	2.0

6.2 Non-standard residues in protein, DNA, RNA chains [i](#)

There are no non-standard protein/DNA/RNA residues in this entry.

6.3 Carbohydrates [i](#)

There are no carbohydrates in this entry.

6.4 Ligands [i](#)

In the following table, the Atoms column lists the number of modelled atoms in the group and the number defined in the chemical component dictionary. LLDF column lists the quality of electron density of the group with respect to its neighbouring residues in protein, DNA or RNA chains. The B-factors column lists the minimum, median, 95th percentile and maximum values of B factors of atoms in the group. The column labelled 'Q< 0.9' lists the number of atoms with occupancy less than 0.9.

Mol	Type	Chain	Res	Atoms	RSCC	RSR	LLDF	B-factors(Å ²)	Q<0.9
5	BME	B	600[B]	4/4	0.90	0.61	7.17	88,89,89,90	4
5	BME	A	601[B]	4/4	0.94	0.54	5.77	84,85,85,85	4
4	B3N	A	500[B]	22/22	0.93	0.34	1.48	71,73,75,75	22
4	B3N	A	500[A]	22/22	0.93	0.34	1.46	62,68,71,74	22
2	ZN	B	401	1/1	0.99	0.19	0.28	57,57,57,57	0
4	B3N	B	501[B]	22/22	0.96	0.24	0.22	55,63,70,71	22
4	B3N	B	501[A]	22/22	0.96	0.24	0.17	65,77,82,83	22
2	ZN	A	404	1/1	0.99	0.18	-0.09	56,56,56,56	0
3	K	B	402	1/1	0.98	0.16	-0.73	59,59,59,59	0
3	K	A	406	1/1	0.92	0.10	-1.61	76,76,76,76	0
3	K	B	403	1/1	0.95	0.07	-2.34	76,76,76,76	0
3	K	A	405	1/1	0.99	0.10	-2.73	57,57,57,57	0

6.5 Other polymers [i](#)

There are no such residues in this entry.