



wwPDB X-ray Structure Validation Summary Report ⓘ

Feb 1, 2016 – 08:33 AM GMT

PDB ID : 3F0G
Title : Co-crystal structure of 2C-methyl-D-erythritol 2,4-cyclodiphosphate synthase with CMP
Authors : Seattle Structural Genomics Center for Infectious Disease (SSGCID)
Deposited on : 2008-10-24
Resolution : 2.08 Å(reported)

This is a wwPDB X-ray Structure Validation Summary Report for a publicly released PDB entry.
We welcome your comments at validation@mail.wwpdb.org
A user guide is available at
<http://wwpdb.org/validation/2016/XrayValidationReportHelp>
with specific help available everywhere you see the ⓘ symbol.

The following versions of software and data (see [references ⓘ](#)) were used in the production of this report:

MolProbity : 4.02b-467
Mogul : 1.7 (RC4), CSD as536be (2015)
Xtriage (Phenix) : 1.9-1692
EDS : rb-20026688
Percentile statistics : 20151230.v01 (using entries in the PDB archive December 30th 2015)
Refmac : 5.8.0135
CCP4 : 6.5.0
Ideal geometry (proteins) : Engh & Huber (2001)
Ideal geometry (DNA, RNA) : Parkinson et al. (1996)
Validation Pipeline (wwPDB-VP) : trunk26865

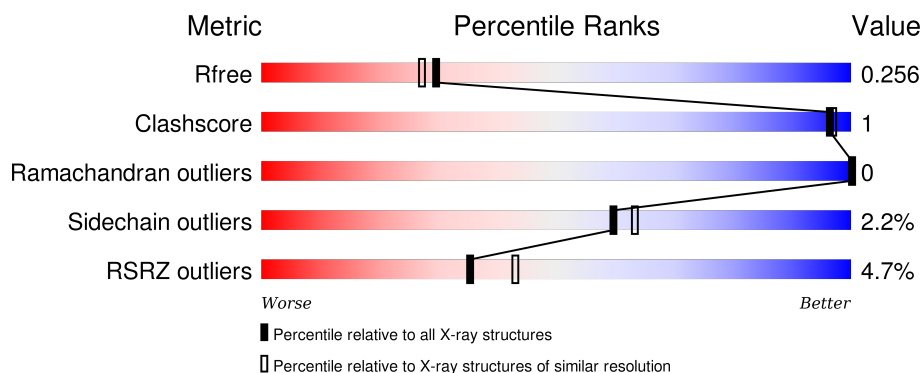
1 Overall quality at a glance

The following experimental techniques were used to determine the structure:

X-RAY DIFFRACTION

The reported resolution of this entry is 2.08 Å.

Percentile scores (ranging between 0-100) for global validation metrics of the entry are shown in the following graphic. The table shows the number of entries on which the scores are based.




Metric	Whole archive (#Entries)	Similar resolution (#Entries, resolution range(Å))
R_{free}	91344	4546 (2.10-2.06)
Clashscore	102246	5101 (2.10-2.06)
Ramachandran outliers	100387	5048 (2.10-2.06)
Sidechain outliers	100360	5049 (2.10-2.06)
RSRZ outliers	91569	4556 (2.10-2.06)

The table below summarises the geometric issues observed across the polymeric chains and their fit to the electron density. The red, orange, yellow and green segments on the lower bar indicate the fraction of residues that contain outliers for ≥ 3 , 2, 1 and 0 types of geometric quality criteria. A grey segment represents the fraction of residues that are not modelled. The numeric value for each fraction is indicated below the corresponding segment, with a dot representing fractions $\leq 5\%$. The upper red bar (where present) indicates the fraction of residues that have poor fit to the electron density. The numeric value is given above the bar.

Mol	Chain	Length	Quality of chain
1	A	183	<div> <div>4%</div> <div>83%</div> <div>13%</div> </div>
1	B	183	<div> <div>5%</div> <div>80%</div> <div>16%</div> </div>
1	C	183	<div> <div>5%</div> <div>78%</div> <div>19%</div> </div>
1	D	183	<div> <div>%</div> <div>82%</div> <div>13%</div> </div>
1	E	183	<div> <div>%</div> <div>78%</div> <div>19%</div> </div>

Continued on next page...

Continued from previous page...

Mol	Chain	Length	Quality of chain
1	F	183	

The following table lists non-polymeric compounds, carbohydrate monomers and non-standard residues in protein, DNA, RNA chains that are outliers for geometric or electron-density-fit criteria:

Mol	Type	Chain	Res	Chirality	Geometry	Clashes	Electron density
2	ZN	E	164	-	-	-	X
3	C5P	B	163	-	-	-	X
3	C5P	C	163	-	-	-	X

2 Entry composition

There are 4 unique types of molecules in this entry. The entry contains 7508 atoms, of which 0 are hydrogens and 0 are deuteriums.

In the tables below, the ZeroOcc column contains the number of atoms modelled with zero occupancy, the AltConf column contains the number of residues with at least one atom in alternate conformation and the Trace column contains the number of residues modelled with at most 2 atoms.

- Molecule 1 is a protein called 2-C-methyl-D-erythritol 2,4-cyclodiphosphate synthase.

Mol	Chain	Residues	Atoms					ZeroOcc	AltConf	Trace
1	A	159	Total	C	N	O	S	0	0	0
			1188	745	219	221	3			
1	B	154	Total	C	N	O	S	0	1	0
			1149	724	211	211	3			
1	C	149	Total	C	N	O	S	0	1	0
			1111	699	206	203	3			
1	D	159	Total	C	N	O	S	0	0	0
			1194	748	222	221	3			
1	E	148	Total	C	N	O	S	0	1	0
			1103	693	205	202	3			
1	F	148	Total	C	N	O	S	0	0	0
			1104	694	205	202	3			

There are 126 discrepancies between the modelled and reference sequences:

Chain	Residue	Modelled	Actual	Comment	Reference
A	-20	MET	-	EXPRESSION TAG	UNP Q63T71
A	-19	ALA	-	EXPRESSION TAG	UNP Q63T71
A	-18	HIS	-	EXPRESSION TAG	UNP Q63T71
A	-17	HIS	-	EXPRESSION TAG	UNP Q63T71
A	-16	HIS	-	EXPRESSION TAG	UNP Q63T71
A	-15	HIS	-	EXPRESSION TAG	UNP Q63T71
A	-14	HIS	-	EXPRESSION TAG	UNP Q63T71
A	-13	HIS	-	EXPRESSION TAG	UNP Q63T71
A	-12	MET	-	EXPRESSION TAG	UNP Q63T71
A	-11	GLY	-	EXPRESSION TAG	UNP Q63T71
A	-10	THR	-	EXPRESSION TAG	UNP Q63T71
A	-9	LEU	-	EXPRESSION TAG	UNP Q63T71
A	-8	GLU	-	EXPRESSION TAG	UNP Q63T71
A	-7	ALA	-	EXPRESSION TAG	UNP Q63T71
A	-6	GLN	-	EXPRESSION TAG	UNP Q63T71
A	-5	THR	-	EXPRESSION TAG	UNP Q63T71
A	-4	GLN	-	EXPRESSION TAG	UNP Q63T71

Continued on next page...

Continued from previous page...

Chain	Residue	Modelled	Actual	Comment	Reference
A	-3	GLY	-	EXPRESSION TAG	UNP Q63T71
A	-2	PRO	-	EXPRESSION TAG	UNP Q63T71
A	-1	GLY	-	EXPRESSION TAG	UNP Q63T71
A	0	SER	-	EXPRESSION TAG	UNP Q63T71
B	-20	MET	-	EXPRESSION TAG	UNP Q63T71
B	-19	ALA	-	EXPRESSION TAG	UNP Q63T71
B	-18	HIS	-	EXPRESSION TAG	UNP Q63T71
B	-17	HIS	-	EXPRESSION TAG	UNP Q63T71
B	-16	HIS	-	EXPRESSION TAG	UNP Q63T71
B	-15	HIS	-	EXPRESSION TAG	UNP Q63T71
B	-14	HIS	-	EXPRESSION TAG	UNP Q63T71
B	-13	HIS	-	EXPRESSION TAG	UNP Q63T71
B	-12	MET	-	EXPRESSION TAG	UNP Q63T71
B	-11	GLY	-	EXPRESSION TAG	UNP Q63T71
B	-10	THR	-	EXPRESSION TAG	UNP Q63T71
B	-9	LEU	-	EXPRESSION TAG	UNP Q63T71
B	-8	GLU	-	EXPRESSION TAG	UNP Q63T71
B	-7	ALA	-	EXPRESSION TAG	UNP Q63T71
B	-6	GLN	-	EXPRESSION TAG	UNP Q63T71
B	-5	THR	-	EXPRESSION TAG	UNP Q63T71
B	-4	GLN	-	EXPRESSION TAG	UNP Q63T71
B	-3	GLY	-	EXPRESSION TAG	UNP Q63T71
B	-2	PRO	-	EXPRESSION TAG	UNP Q63T71
B	-1	GLY	-	EXPRESSION TAG	UNP Q63T71
B	0	SER	-	EXPRESSION TAG	UNP Q63T71
C	-20	MET	-	EXPRESSION TAG	UNP Q63T71
C	-19	ALA	-	EXPRESSION TAG	UNP Q63T71
C	-18	HIS	-	EXPRESSION TAG	UNP Q63T71
C	-17	HIS	-	EXPRESSION TAG	UNP Q63T71
C	-16	HIS	-	EXPRESSION TAG	UNP Q63T71
C	-15	HIS	-	EXPRESSION TAG	UNP Q63T71
C	-14	HIS	-	EXPRESSION TAG	UNP Q63T71
C	-13	HIS	-	EXPRESSION TAG	UNP Q63T71
C	-12	MET	-	EXPRESSION TAG	UNP Q63T71
C	-11	GLY	-	EXPRESSION TAG	UNP Q63T71
C	-10	THR	-	EXPRESSION TAG	UNP Q63T71
C	-9	LEU	-	EXPRESSION TAG	UNP Q63T71
C	-8	GLU	-	EXPRESSION TAG	UNP Q63T71
C	-7	ALA	-	EXPRESSION TAG	UNP Q63T71
C	-6	GLN	-	EXPRESSION TAG	UNP Q63T71
C	-5	THR	-	EXPRESSION TAG	UNP Q63T71
C	-4	GLN	-	EXPRESSION TAG	UNP Q63T71

Continued on next page...

Continued from previous page...

Chain	Residue	Modelled	Actual	Comment	Reference
C	-3	GLY	-	EXPRESSION TAG	UNP Q63T71
C	-2	PRO	-	EXPRESSION TAG	UNP Q63T71
C	-1	GLY	-	EXPRESSION TAG	UNP Q63T71
C	0	SER	-	EXPRESSION TAG	UNP Q63T71
D	-20	MET	-	EXPRESSION TAG	UNP Q63T71
D	-19	ALA	-	EXPRESSION TAG	UNP Q63T71
D	-18	HIS	-	EXPRESSION TAG	UNP Q63T71
D	-17	HIS	-	EXPRESSION TAG	UNP Q63T71
D	-16	HIS	-	EXPRESSION TAG	UNP Q63T71
D	-15	HIS	-	EXPRESSION TAG	UNP Q63T71
D	-14	HIS	-	EXPRESSION TAG	UNP Q63T71
D	-13	HIS	-	EXPRESSION TAG	UNP Q63T71
D	-12	MET	-	EXPRESSION TAG	UNP Q63T71
D	-11	GLY	-	EXPRESSION TAG	UNP Q63T71
D	-10	THR	-	EXPRESSION TAG	UNP Q63T71
D	-9	LEU	-	EXPRESSION TAG	UNP Q63T71
D	-8	GLU	-	EXPRESSION TAG	UNP Q63T71
D	-7	ALA	-	EXPRESSION TAG	UNP Q63T71
D	-6	GLN	-	EXPRESSION TAG	UNP Q63T71
D	-5	THR	-	EXPRESSION TAG	UNP Q63T71
D	-4	GLN	-	EXPRESSION TAG	UNP Q63T71
D	-3	GLY	-	EXPRESSION TAG	UNP Q63T71
D	-2	PRO	-	EXPRESSION TAG	UNP Q63T71
D	-1	GLY	-	EXPRESSION TAG	UNP Q63T71
D	0	SER	-	EXPRESSION TAG	UNP Q63T71
E	-20	MET	-	EXPRESSION TAG	UNP Q63T71
E	-19	ALA	-	EXPRESSION TAG	UNP Q63T71
E	-18	HIS	-	EXPRESSION TAG	UNP Q63T71
E	-17	HIS	-	EXPRESSION TAG	UNP Q63T71
E	-16	HIS	-	EXPRESSION TAG	UNP Q63T71
E	-15	HIS	-	EXPRESSION TAG	UNP Q63T71
E	-14	HIS	-	EXPRESSION TAG	UNP Q63T71
E	-13	HIS	-	EXPRESSION TAG	UNP Q63T71
E	-12	MET	-	EXPRESSION TAG	UNP Q63T71
E	-11	GLY	-	EXPRESSION TAG	UNP Q63T71
E	-10	THR	-	EXPRESSION TAG	UNP Q63T71
E	-9	LEU	-	EXPRESSION TAG	UNP Q63T71
E	-8	GLU	-	EXPRESSION TAG	UNP Q63T71
E	-7	ALA	-	EXPRESSION TAG	UNP Q63T71
E	-6	GLN	-	EXPRESSION TAG	UNP Q63T71
E	-5	THR	-	EXPRESSION TAG	UNP Q63T71
E	-4	GLN	-	EXPRESSION TAG	UNP Q63T71

Continued on next page...

Continued from previous page...

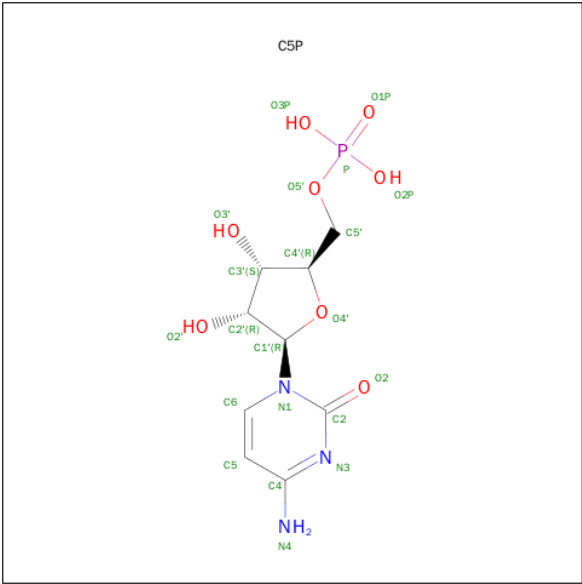
Chain	Residue	Modelled	Actual	Comment	Reference
E	-3	GLY	-	EXPRESSION TAG	UNP Q63T71
E	-2	PRO	-	EXPRESSION TAG	UNP Q63T71
E	-1	GLY	-	EXPRESSION TAG	UNP Q63T71
E	0	SER	-	EXPRESSION TAG	UNP Q63T71
F	-20	MET	-	EXPRESSION TAG	UNP Q63T71
F	-19	ALA	-	EXPRESSION TAG	UNP Q63T71
F	-18	HIS	-	EXPRESSION TAG	UNP Q63T71
F	-17	HIS	-	EXPRESSION TAG	UNP Q63T71
F	-16	HIS	-	EXPRESSION TAG	UNP Q63T71
F	-15	HIS	-	EXPRESSION TAG	UNP Q63T71
F	-14	HIS	-	EXPRESSION TAG	UNP Q63T71
F	-13	HIS	-	EXPRESSION TAG	UNP Q63T71
F	-12	MET	-	EXPRESSION TAG	UNP Q63T71
F	-11	GLY	-	EXPRESSION TAG	UNP Q63T71
F	-10	THR	-	EXPRESSION TAG	UNP Q63T71
F	-9	LEU	-	EXPRESSION TAG	UNP Q63T71
F	-8	GLU	-	EXPRESSION TAG	UNP Q63T71
F	-7	ALA	-	EXPRESSION TAG	UNP Q63T71
F	-6	GLN	-	EXPRESSION TAG	UNP Q63T71
F	-5	THR	-	EXPRESSION TAG	UNP Q63T71
F	-4	GLN	-	EXPRESSION TAG	UNP Q63T71
F	-3	GLY	-	EXPRESSION TAG	UNP Q63T71
F	-2	PRO	-	EXPRESSION TAG	UNP Q63T71
F	-1	GLY	-	EXPRESSION TAG	UNP Q63T71
F	0	SER	-	EXPRESSION TAG	UNP Q63T71

- Molecule 2 is ZINC ION (three-letter code: ZN) (formula: Zn).

Mol	Chain	Residues	Atoms	ZeroOcc	AltConf
2	D	1	Total Zn 1 1	0	0
2	E	1	Total Zn 1 1	0	0
2	B	1	Total Zn 1 1	0	0
2	C	1	Total Zn 1 1	0	0
2	A	1	Total Zn 1 1	0	0
2	F	1	Total Zn 1 1	0	0

- Molecule 3 is CYTIDINE-5'-MONOPHOSPHATE (three-letter code: C5P) (formula:

C₉H₁₄N₃O₈P).

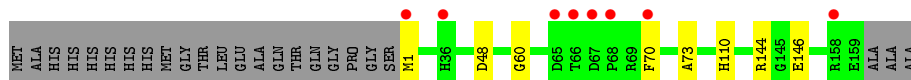


Mol	Chain	Residues	Atoms					ZeroOcc	AltConf
3	B	1	Total	C	N	O	P	0	0
			21	9	3	8	1		
3	C	1	Total	C	N	O	P	0	0
			21	9	3	8	1		
3	D	1	Total	C	N	O	P	0	0
			21	9	3	8	1		
3	E	1	Total	C	N	O	P	0	0
			21	9	3	8	1		
3	F	1	Total	C	N	O	P	0	0
			21	9	3	8	1		

- Molecule 4 is water.

Mol	Chain	Residues	Atoms		ZeroOcc	AltConf
4	A	131	Total	O	0	0
			131	131		
4	B	86	Total	O	0	0
			86	86		
4	C	78	Total	O	0	0
			78	78		
4	D	109	Total	O	0	0
			109	109		
4	E	95	Total	O	0	0
			95	95		
4	F	49	Total	O	0	0
			49	49		

- Molecule 1: 2-C-methyl-D-erythritol 2,4-cyclodiphosphate synthase



-

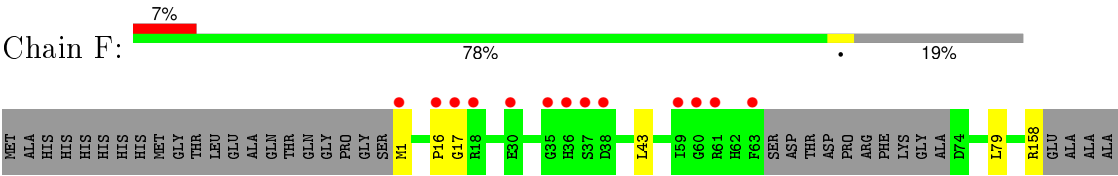


- | | | | | | | | | | | | | | | | | | | | | | | | | | | | | | | | | | | | | | | | | | | | | | | | | |
|-----|-----|-----|-----|-----|-----|-----|-----|-----|-----|-----|-----|-----|-----|-----|-----|-----|-----|-----|-----|----|-----|-----|-----|-----|-----|-----|-----|-----|-----|-----|-----|-----|-----|-----|-----|-----|-----|-----|-----|-----|-----|-----|-----|------|------|-----|-----|-----|
| MET | ALA | HIS | HIS | HIS | HIS | HIS | MET | GLY | THR | LEU | GLU | ALA | GLN | THR | GLN | GLY | PRO | GLY | SER | HI | P16 | R17 | P19 | P28 | H36 | S37 | I59 | G60 | R61 | H62 | F63 | ASP | ASP | THR | ASP | PRO | PRO | ARG | PHE | LYS | GLY | A73 | R15 | N130 | R158 | GLU | ALA | ALA |
|-----|-----|-----|-----|-----|-----|-----|-----|-----|-----|-----|-----|-----|-----|-----|-----|-----|-----|-----|-----|----|-----|-----|-----|-----|-----|-----|-----|-----|-----|-----|-----|-----|-----|-----|-----|-----|-----|-----|-----|-----|-----|-----|-----|------|------|-----|-----|-----|

- | | | | | | | | | | | | | | | | | | | | | | | | | | | | | | | | | | |
|-----|-----|-----|-----|-----|-----|-----|-----|-----|-----|-----|-----|-----|-----|-----|-----|-----|-----|-----|-----|-----|----|-----|-----|-----|-----|-----|-----|-----|------|------|------|-----|-----|
| MET | ALA | HIS | HIS | HIS | HIS | HIS | HIS | MET | GLY | THR | LEU | GLU | ALA | GLN | THR | GLN | GLY | PRO | GLY | SER | M1 | D48 | R61 | D65 | T66 | F70 | A73 | N95 | K106 | H110 | E159 | ALA | ALA |
|-----|-----|-----|-----|-----|-----|-----|-----|-----|-----|-----|-----|-----|-----|-----|-----|-----|-----|-----|-----|-----|----|-----|-----|-----|-----|-----|-----|-----|------|------|------|-----|-----|

- MET ALA HIS HIS HIS HIS HIS MET MET GLY THR LEU GLU GLN GLN THR GLN GLY GLY SER M1 E90 L43 I59 H62 PHE ASP ASP THR ASP PRQ PRQ ARG PHE LYS GLY GLY ALA D74 L79 N95 E159 ALA ALA

● Molecule 1: 2-C-methyl-D-erythritol 2,4-cyclodiphosphate synthase



4 Data and refinement statistics

Property	Value	Source
Space group	C 1 2 1	Depositor
Cell constants a, b, c, α , β , γ	157.66 Å 69.76 Å 116.67 Å 90.00° 130.04° 90.00°	Depositor
Resolution (Å)	50.00 – 2.08 32.49 – 2.08	Depositor EDS
% Data completeness (in resolution range)	83.8 (50.00-2.08) 83.8 (32.49-2.08)	Depositor EDS
R_{merge}	0.05	Depositor
R_{sym}	(Not available)	Depositor
$\langle I/\sigma(I) \rangle$ ¹	4.48 (at 2.08 Å)	Xtriage
Refinement program	REFMAC 5.5.0053	Depositor
R, R_{free}	0.213 , 0.258 0.212 , 0.256	Depositor DCC
R_{free} test set	2457 reflections (5.30%)	DCC
Wilson B-factor (Å ²)	21.9	Xtriage
Anisotropy	0.069	Xtriage
Bulk solvent k_{sol} (e/Å ³), B_{sol} (Å ²)	0.35 , 50.6	EDS
Estimated twinning fraction	0.000 for h,-k,-h-l	Xtriage
L-test for twinning ²	$\langle L \rangle = 0.51$, $\langle L^2 \rangle = 0.35$	Xtriage
Outliers	0 of 48824 reflections	Xtriage
F_o, F_c correlation	0.94	EDS
Total number of atoms	7508	wwPDB-VP
Average B, all atoms (Å ²)	21.0	wwPDB-VP

Xtriage's analysis on translational NCS is as follows: *The analyses of the Patterson function reveals a significant off-origin peak that is 51.07 % of the origin peak, indicating pseudo translational symmetry. The chance of finding a peak of this or larger height randomly in a structure without pseudo translational symmetry is equal to 5.9095e-05. The detected translational NCS is most likely also responsible for the elevated intensity ratio.*

¹ Intensities estimated from amplitudes.

² Theoretical values of $\langle |L| \rangle$, $\langle L^2 \rangle$ for acentric reflections are 0.5, 0.375 respectively for untwinned datasets, and 0.333, 0.2 for perfectly twinned datasets.

5 Model quality [i](#)

5.1 Standard geometry [i](#)

Bond lengths and bond angles in the following residue types are not validated in this section: ZN, C5P

The Z score for a bond length (or angle) is the number of standard deviations the observed value is removed from the expected value. A bond length (or angle) with $|Z| > 5$ is considered an outlier worth inspection. RMSZ is the root-mean-square of all Z scores of the bond lengths (or angles).

Mol	Chain	Bond lengths		Bond angles	
		RMSZ	$\# Z > 5$	RMSZ	$\# Z > 5$
1	A	0.42	0/1207	0.51	0/1635
1	B	0.35	0/1167	0.50	0/1578
1	C	0.45	1/1129 (0.1%)	0.52	0/1528
1	D	0.36	0/1213	0.53	0/1642
1	E	0.34	0/1120	0.50	0/1516
1	F	0.33	0/1119	0.47	0/1514
All	All	0.38	1/6955 (0.0%)	0.50	0/9413

All (1) bond length outliers are listed below:

Mol	Chain	Res	Type	Atoms	Z	Observed(Å)	Ideal(Å)
1	C	115	ARG	CB-CG	-5.06	1.39	1.52

There are no bond angle outliers.

There are no chirality outliers.

There are no planarity outliers.

5.2 Too-close contacts [i](#)

In the following table, the Non-H and H(model) columns list the number of non-hydrogen atoms and hydrogen atoms in the chain respectively. The H(added) column lists the number of hydrogen atoms added and optimized by MolProbity. The Clashes column lists the number of clashes within the asymmetric unit, whereas Symm-Clashes lists symmetry related clashes.

Mol	Chain	Non-H	H(model)	H(added)	Clashes	Symm-Clashes
1	A	1188	0	1197	4	0
1	B	1149	0	1163	5	0
1	C	1111	0	1133	3	0
1	D	1194	0	1208	4	0

Continued on next page...

Continued from previous page...

Mol	Chain	Non-H	H(model)	H(added)	Clashes	Symm-Clashes
1	E	1103	0	1130	2	0
1	F	1104	0	1126	2	0
2	A	1	0	0	0	0
2	B	1	0	0	0	0
2	C	1	0	0	0	0
2	D	1	0	0	0	0
2	E	1	0	0	0	0
2	F	1	0	0	0	0
3	B	21	0	12	3	0
3	C	21	0	12	1	0
3	D	21	0	12	0	0
3	E	21	0	12	0	0
3	F	21	0	12	0	0
4	A	131	0	0	1	0
4	B	86	0	0	0	0
4	C	78	0	0	0	0
4	D	109	0	0	1	0
4	E	95	0	0	0	0
4	F	49	0	0	0	0
All	All	7508	0	7017	19	0

The all-atom clashscore is defined as the number of clashes found per 1000 atoms (including hydrogen atoms). The all-atom clashscore for this structure is 1.

The worst 5 of 19 close contacts within the same asymmetric unit are listed below, sorted by their clash magnitude.

Atom-1	Atom-2	Interatomic distance (Å)	Clash overlap (Å)
1:B:60:GLY:HA3	3:C:163:C5P:O3'	2.02	0.59
1:A:110:HIS:HD2	4:A:179:HOH:O	1.89	0.55
1:B:42:LEU:HD22	1:B:100:ILE:HD11	1.92	0.51
1:A:60:GLY:HA3	3:B:163:C5P:O3'	2.12	0.49
1:F:43:LEU:HD22	1:F:79:LEU:HD22	1.95	0.48

There are no symmetry-related clashes.

5.3 Torsion angles

5.3.1 Protein backbone

In the following table, the Percentiles column shows the percent Ramachandran outliers of the chain as a percentile score with respect to all X-ray entries followed by that with respect to entries of similar resolution.

The Analysed column shows the number of residues for which the backbone conformation was analysed, and the total number of residues.

Mol	Chain	Analysed	Favoured	Allowed	Outliers	Percentiles	
1	A	157/183 (86%)	153 (98%)	4 (2%)	0	100	100
1	B	149/183 (81%)	145 (97%)	4 (3%)	0	100	100
1	C	146/183 (80%)	142 (97%)	4 (3%)	0	100	100
1	D	157/183 (86%)	155 (99%)	2 (1%)	0	100	100
1	E	145/183 (79%)	142 (98%)	3 (2%)	0	100	100
1	F	144/183 (79%)	141 (98%)	3 (2%)	0	100	100
All	All	898/1098 (82%)	878 (98%)	20 (2%)	0	100	100

There are no Ramachandran outliers to report.

5.3.2 Protein sidechains

In the following table, the Percentiles column shows the percent sidechain outliers of the chain as a percentile score with respect to all X-ray entries followed by that with respect to entries of similar resolution.

The Analysed column shows the number of residues for which the sidechain conformation was analysed, and the total number of residues.

Mol	Chain	Analysed	Rotameric	Outliers	Percentiles	
1	A	118/135 (87%)	116 (98%)	2 (2%)	68	73
1	B	113/135 (84%)	111 (98%)	2 (2%)	66	71
1	C	109/135 (81%)	108 (99%)	1 (1%)	84	88
1	D	119/135 (88%)	114 (96%)	5 (4%)	36	34
1	E	109/135 (81%)	106 (97%)	3 (3%)	51	54
1	F	109/135 (81%)	107 (98%)	2 (2%)	66	71
All	All	677/810 (84%)	662 (98%)	15 (2%)	60	63

5 of 15 residues with a non-rotameric sidechain are listed below:

Mol	Chain	Res	Type
1	D	48	ASP
1	D	61	ARG
1	E	95	ASN
1	D	1	MET
1	E	59	ILE

Some sidechains can be flipped to improve hydrogen bonding and reduce clashes. 5 of 10 such sidechains are listed below:

Mol	Chain	Res	Type
1	C	110	HIS
1	D	7	GLN
1	D	136	ASN
1	B	7	GLN
1	D	110	HIS

5.3.3 RNA [i](#)

There are no RNA molecules in this entry.

5.4 Non-standard residues in protein, DNA, RNA chains [i](#)

There are no non-standard protein/DNA/RNA residues in this entry.

5.5 Carbohydrates [i](#)

There are no carbohydrates in this entry.

5.6 Ligand geometry [i](#)

Of 11 ligands modelled in this entry, 6 are monoatomic - leaving 5 for Mogul analysis.

In the following table, the Counts columns list the number of bonds (or angles) for which Mogul statistics could be retrieved, the number of bonds (or angles) that are observed in the model and the number of bonds (or angles) that are defined in the chemical component dictionary. The Link column lists molecule types, if any, to which the group is linked. The Z score for a bond length (or angle) is the number of standard deviations the observed value is removed from the expected value. A bond length (or angle) with $|Z| > 2$ is considered an outlier worth inspection. RMSZ is the root-mean-square of all Z scores of the bond lengths (or angles).

Mol	Type	Chain	Res	Link	Bond lengths			Bond angles		
					Counts	RMSZ	# Z > 2	Counts	RMSZ	# Z > 2
3	C5P	B	163	-	17,22,22	1.31	4 (23%)	22,33,33	2.12	8 (36%)
3	C5P	C	163	-	17,22,22	0.82	1 (5%)	22,33,33	1.32	2 (9%)
3	C5P	D	163	-	17,22,22	0.80	0	22,33,33	1.36	2 (9%)
3	C5P	E	163	-	17,22,22	0.84	1 (5%)	22,33,33	1.35	3 (13%)
3	C5P	F	163	-	17,22,22	0.82	1 (5%)	22,33,33	1.31	2 (9%)

In the following table, the Chirals column lists the number of chiral outliers, the number of chiral centers analysed, the number of these observed in the model and the number defined in the chemical component dictionary. Similar counts are reported in the Torsion and Rings columns. '-' means no outliers of that kind were identified.

Mol	Type	Chain	Res	Link	Chirals	Torsions	Rings
3	C5P	B	163	-	-	0/6/26/26	0/2/2/2
3	C5P	C	163	-	-	0/6/26/26	0/2/2/2
3	C5P	D	163	-	-	0/6/26/26	0/2/2/2
3	C5P	E	163	-	-	0/6/26/26	0/2/2/2
3	C5P	F	163	-	-	0/6/26/26	0/2/2/2

The worst 5 of 7 bond length outliers are listed below:

Mol	Chain	Res	Type	Atoms	Z	Observed(Å)	Ideal(Å)
3	B	163	C5P	C2'-C3'	-2.29	1.47	1.53
3	B	163	C5P	C4-N3	-2.21	1.31	1.35
3	B	163	C5P	C6-N1	-2.19	1.32	1.35
3	B	163	C5P	P-O1P	-2.11	1.44	1.51
3	C	163	C5P	O4'-C1'	2.11	1.43	1.41

The worst 5 of 17 bond angle outliers are listed below:

Mol	Chain	Res	Type	Atoms	Z	Observed(°)	Ideal(°)
3	B	163	C5P	O3P-P-O5'	-3.52	96.43	106.56
3	B	163	C5P	O3'-C3'-C2'	-2.03	105.22	111.83
3	B	163	C5P	O2P-P-O1P	2.01	117.06	110.58
3	E	163	C5P	N4-C4-N3	2.11	120.34	116.50
3	B	163	C5P	C2'-C3'-C4'	2.17	107.08	102.61

There are no chirality outliers.

There are no torsion outliers.

There are no ring outliers.

2 monomers are involved in 4 short contacts:

Mol	Chain	Res	Type	Clashes	Symm-Clashes
3	B	163	C5P	3	0
3	C	163	C5P	1	0

5.7 Other polymers [i](#)

There are no such residues in this entry.

5.8 Polymer linkage issues [i](#)

There are no chain breaks in this entry.

6 Fit of model and data [i](#)

6.1 Protein, DNA and RNA chains [i](#)

In the following table, the column labelled ‘#RSRZ> 2’ contains the number (and percentage) of RSRZ outliers, followed by percent RSRZ outliers for the chain as percentile scores relative to all X-ray entries and entries of similar resolution. The OWAB column contains the minimum, median, 95th percentile and maximum values of the occupancy-weighted average B-factor per residue. The column labelled ‘Q< 0.9’ lists the number of (and percentage) of residues with an average occupancy less than 0.9.

Mol	Chain	Analysed	<RSRZ>	#RSRZ>2	OWAB(Å ²)	Q<0.9
1	A	159/183 (86%)	-0.08	8 (5%) 32 40	10, 16, 28, 40	0
1	B	154/183 (84%)	0.11	10 (6%) 22 29	12, 18, 31, 36	0
1	C	149/183 (81%)	0.15	10 (6%) 21 27	14, 21, 31, 43	0
1	D	159/183 (86%)	-0.06	1 (0%) 90 92	11, 18, 27, 31	0
1	E	148/183 (80%)	-0.06	1 (0%) 89 91	12, 19, 28, 37	0
1	F	148/183 (80%)	0.51	13 (8%) 12 16	18, 28, 38, 46	0
All	All	917/1098 (83%)	0.09	43 (4%) 35 43	10, 19, 34, 46	0

The worst 5 of 43 RSRZ outliers are listed below:

Mol	Chain	Res	Type	RSRZ
1	F	63	PHE	6.7
1	C	63	PHE	6.2
1	F	59	ILE	5.8
1	B	72	GLY	5.6
1	F	1	MET	5.1

6.2 Non-standard residues in protein, DNA, RNA chains [i](#)

There are no non-standard protein/DNA/RNA residues in this entry.

6.3 Carbohydrates [i](#)

There are no carbohydrates in this entry.

6.4 Ligands [i](#)

In the following table, the Atoms column lists the number of modelled atoms in the group and the number defined in the chemical component dictionary. LLDF column lists the quality of electron density of the group with respect to its neighbouring residues in protein, DNA or RNA chains. The B-factors column lists the minimum, median, 95th percentile and maximum values of B factors of atoms in the group. The column labelled 'Q< 0.9' lists the number of atoms with occupancy less than 0.9.

Mol	Type	Chain	Res	Atoms	RSCC	RSR	LLDF	B-factors(Å ²)	Q<0.9
3	C5P	B	163	21/21	0.76	0.46	5.43	47,49,50,50	21
3	C5P	C	163	21/21	0.80	0.25	4.12	55,58,60,61	0
2	ZN	E	164	1/1	0.99	0.16	2.94	44,44,44,44	0
3	C5P	F	163	21/21	0.77	0.23	1.46	46,48,50,51	0
3	C5P	E	163	21/21	0.90	0.17	1.36	34,35,36,37	0
3	C5P	D	163	21/21	0.81	0.23	0.93	25,26,26,26	21
2	ZN	C	164	1/1	0.99	0.11	-0.06	38,38,38,38	0
2	ZN	B	164	1/1	0.99	0.11	-0.53	39,39,39,39	0
2	ZN	F	164	1/1	0.99	0.07	-2.48	39,39,39,39	0
2	ZN	D	164	1/1	1.00	0.02	-4.15	26,26,26,26	0
2	ZN	A	163	1/1	0.99	0.03	-4.62	24,24,24,24	0

6.5 Other polymers [i](#)

There are no such residues in this entry.