



Full wwPDB X-ray Structure Validation Report ⓘ

Feb 1, 2016 – 02:01 AM GMT

PDB ID : 2FB2
Title : Structure of the MoaA Arg17/266/268/Ala triple mutant
Authors : Haenzelmann, P.; Schindelin, H.
Deposited on : 2005-12-08
Resolution : 2.25 Å(reported)

This is a Full wwPDB X-ray Structure Validation Report for a publicly released PDB entry.
We welcome your comments at validation@mail.wwpdb.org
A user guide is available at
<http://wwpdb.org/validation/2016/XrayValidationReportHelp>
with specific help available everywhere you see the ⓘ symbol.

The following versions of software and data (see [references ⓘ](#)) were used in the production of this report:

MolProbity : 4.02b-467
Mogul : 1.7 (RC4), CSD as536be (2015)
Xtriage (Phenix) : 1.9-1692
EDS : rb-20026688
Percentile statistics : 20151230.v01 (using entries in the PDB archive December 30th 2015)
Refmac : 5.8.0135
CCP4 : 6.5.0
Ideal geometry (proteins) : Engh & Huber (2001)
Ideal geometry (DNA, RNA) : Parkinson et al. (1996)
Validation Pipeline (wwPDB-VP) : trunk26865

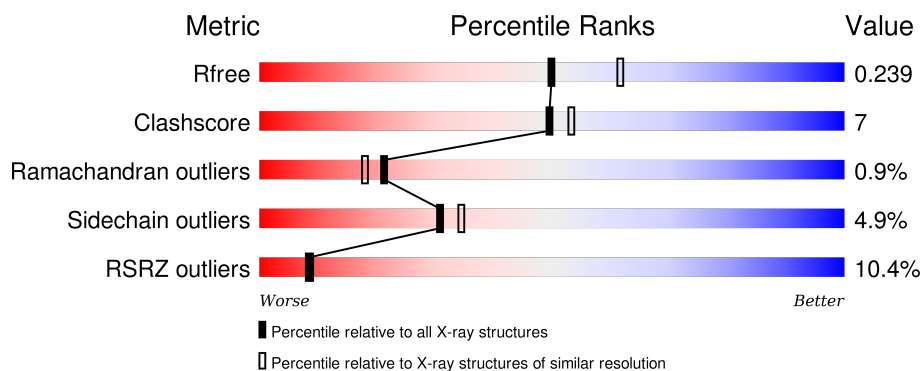
1 Overall quality at a glance

The following experimental techniques were used to determine the structure:

X-RAY DIFFRACTION

The reported resolution of this entry is 2.25 Å.

Percentile scores (ranging between 0-100) for global validation metrics of the entry are shown in the following graphic. The table shows the number of entries on which the scores are based.



Metric	Whole archive (#Entries)	Similar resolution (#Entries, resolution range(Å))
R_{free}	91344	1640 (2.28-2.24)
Clashscore	102246	1095 (2.26-2.26)
Ramachandran outliers	100387	1063 (2.26-2.26)
Sidechain outliers	100360	1063 (2.26-2.26)
RSRZ outliers	91569	1647 (2.28-2.24)

The table below summarises the geometric issues observed across the polymeric chains and their fit to the electron density. The red, orange, yellow and green segments on the lower bar indicate the fraction of residues that contain outliers for ≥ 3 , 2, 1 and 0 types of geometric quality criteria. A grey segment represents the fraction of residues that are not modelled. The numeric value for each fraction is indicated below the corresponding segment, with a dot representing fractions $\leq 5\%$. The upper red bar (where present) indicates the fraction of residues that have poor fit to the electron density. The numeric value is given above the bar.

Mol	Chain	Length	Quality of chain
1	A	340	
1	B	340	

The following table lists non-polymeric compounds, carbohydrate monomers and non-standard residues in protein, DNA, RNA chains that are outliers for geometric or electron-density-fit criteria:

Mol	Type	Chain	Res	Chirality	Geometry	Clashes	Electron density
2	SO4	B	403	-	-	-	X

2 Entry composition [i](#)

There are 5 unique types of molecules in this entry. The entry contains 5510 atoms, of which 0 are hydrogens and 0 are deuteriums.

In the tables below, the ZeroOcc column contains the number of atoms modelled with zero occupancy, the AltConf column contains the number of residues with at least one atom in alternate conformation and the Trace column contains the number of residues modelled with at most 2 atoms.

- Molecule 1 is a protein called Molybdenum cofactor biosynthesis protein A.

Mol	Chain	Residues	Atoms					ZeroOcc	AltConf	Trace
1	A	327	Total	C	N	O	S	0	0	0
			2623	1664	446	500	13			
1	B	326	Total	C	N	O	S	0	0	0
			2614	1659	445	497	13			

There are 6 discrepancies between the modelled and reference sequences:

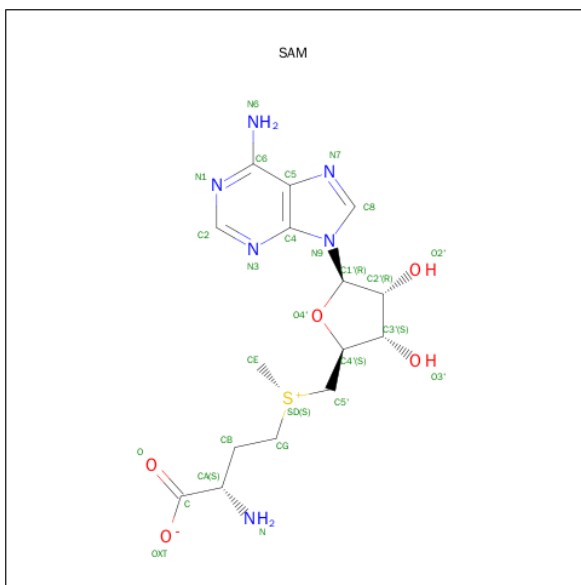
Chain	Residue	Modelled	Actual	Comment	Reference
A	17	ALA	ARG	ENGINEERED	UNP P69848
A	266	ALA	ARG	ENGINEERED	UNP P69848
A	268	ALA	ARG	ENGINEERED	UNP P69848
B	17	ALA	ARG	ENGINEERED	UNP P69848
B	266	ALA	ARG	ENGINEERED	UNP P69848
B	268	ALA	ARG	ENGINEERED	UNP P69848

- Molecule 2 is SULFATE ION (three-letter code: SO4) (formula: O₄S).



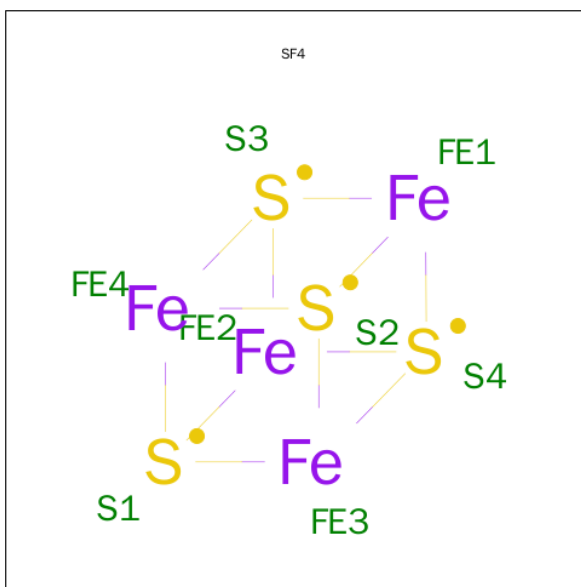
Mol	Chain	Residues	Atoms			ZeroOcc	AltConf
2	A	1	Total	O	S	0	0
			5	4	1		
2	B	1	Total	O	S	0	0
			5	4	1		

- Molecule 3 is S-ADENOSYLMETHIONINE (three-letter code: SAM) (formula: $C_{15}H_{22}N_6O_5S$).



Mol	Chain	Residues	Atoms					ZeroOcc	AltConf
3	A	1	Total	C	N	O	S	0	0
			27	15	6	5	1		
3	B	1	Total	C	N	O	S	0	0
			27	15	6	5	1		

- Molecule 4 is IRON/SULFUR CLUSTER (three-letter code: SF4) (formula: Fe_4S_4).

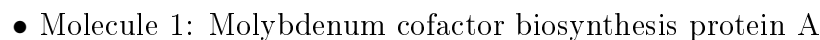


Mol	Chain	Residues	Atoms			ZeroOcc	AltConf
4	A	1	Total	Fe	S	0	0
			8	4	4		
4	A	1	Total	Fe	S	0	0
			8	4	4		
4	B	1	Total	Fe	S	0	0
			8	4	4		
4	B	1	Total	Fe	S	0	0
			8	4	4		

- Molecule 5 is water.

Mol	Chain	Residues	Atoms		ZeroOcc	AltConf
5	A	127	Total	O	0	0
			127	127		
5	B	50	Total	O	0	0
			50	50		

- Molecule 1: Molybdenum cofactor biosynthesis protein A



4 Data and refinement statistics

Property	Value	Source
Space group	P 21 21 21	Depositor
Cell constants a, b, c, α , β , γ	47.97Å 101.29Å 190.13Å 90.00° 90.00° 90.00°	Depositor
Resolution (Å)	20.00 – 2.25 42.27 – 2.25	Depositor EDS
% Data completeness (in resolution range)	98.0 (20.00-2.25) 98.0 (42.27-2.25)	Depositor EDS
R_{merge}	(Not available)	Depositor
R_{sym}	(Not available)	Depositor
$\langle I/\sigma(I) \rangle$ ¹	1.98 (at 2.24Å)	Xtriage
Refinement program	REFMAC 5.2	Depositor
R, R_{free}	0.194 , 0.237 0.196 , 0.239	Depositor DCC
R_{free} test set	2231 reflections (5.34%)	DCC
Wilson B-factor (Å ²)	48.6	Xtriage
Anisotropy	0.539	Xtriage
Bulk solvent k_{sol} (e/Å ³), B_{sol} (Å ²)	0.39 , 63.7	EDS
Estimated twinning fraction	No twinning to report.	Xtriage
L-test for twinning ²	$\langle L \rangle = 0.50$, $\langle L^2 \rangle = 0.34$	Xtriage
Outliers	0 of 44070 reflections	Xtriage
F_o, F_c correlation	0.95	EDS
Total number of atoms	5510	wwPDB-VP
Average B, all atoms (Å ²)	56.0	wwPDB-VP

Xtriage's analysis on translational NCS is as follows: *The largest off-origin peak in the Patterson function is 3.58% of the height of the origin peak. No significant pseudotranslation is detected.*

¹Intensities estimated from amplitudes.

²Theoretical values of $\langle |L| \rangle$, $\langle L^2 \rangle$ for acentric reflections are 0.5, 0.375 respectively for untwinned datasets, and 0.333, 0.2 for perfectly twinned datasets.

5 Model quality

5.1 Standard geometry

Bond lengths and bond angles in the following residue types are not validated in this section: SF4, SO4, SAM

The Z score for a bond length (or angle) is the number of standard deviations the observed value is removed from the expected value. A bond length (or angle) with $|Z| > 5$ is considered an outlier worth inspection. RMSZ is the root-mean-square of all Z scores of the bond lengths (or angles).

Mol	Chain	Bond lengths		Bond angles	
		RMSZ	$\# Z > 5$	RMSZ	$\# Z > 5$
1	A	0.71	2/2666 (0.1%)	0.72	1/3592 (0.0%)
1	B	0.59	4/2657 (0.2%)	0.68	2/3580 (0.1%)
All	All	0.65	6/5323 (0.1%)	0.70	3/7172 (0.0%)

Chiral center outliers are detected by calculating the chiral volume of a chiral center and verifying if the center is modelled as a planar moiety or with the opposite hand. A planarity outlier is detected by checking planarity of atoms in a peptide group, atoms in a mainchain group or atoms of a sidechain that are expected to be planar.

Mol	Chain	#Chirality outliers	#Planarity outliers
1	B	0	1

All (6) bond length outliers are listed below:

Mol	Chain	Res	Type	Atoms	Z	Observed(Å)	Ideal(Å)
1	A	223	HIS	CG-ND1	8.88	1.58	1.38
1	B	34	LYS	CE-NZ	7.90	1.68	1.49
1	A	223	HIS	CE1-NE2	7.83	1.50	1.32
1	B	141	ARG	CZ-NH1	6.82	1.42	1.33
1	B	133	THR	C-N	6.17	1.48	1.34
1	B	132	ASP	C-N	5.46	1.46	1.34

All (3) bond angle outliers are listed below:

Mol	Chain	Res	Type	Atoms	Z	Observed(°)	Ideal(°)
1	B	81	ARG	N-CA-C	-10.54	82.54	111.00
1	B	141	ARG	NE-CZ-NH2	-7.17	116.71	120.30
1	A	269	LEU	CA-CB-CG	6.17	129.49	115.30

There are no chirality outliers.

All (1) planarity outliers are listed below:

Mol	Chain	Res	Type	Group
1	B	80	ARG	Peptide

5.2 Too-close contacts

In the following table, the Non-H and H(model) columns list the number of non-hydrogen atoms and hydrogen atoms in the chain respectively. The H(added) column lists the number of hydrogen atoms added and optimized by MolProbity. The Clashes column lists the number of clashes within the asymmetric unit, whereas Symm-Clashes lists symmetry related clashes.

Mol	Chain	Non-H	H(model)	H(added)	Clashes	Symm-Clashes
1	A	2623	0	2613	45	0
1	B	2614	0	2607	36	0
2	A	5	0	0	1	0
2	B	5	0	0	0	0
3	A	27	0	21	0	0
3	B	27	0	22	0	0
4	A	16	0	0	0	0
4	B	16	0	0	0	0
5	A	127	0	0	4	0
5	B	50	0	0	3	0
All	All	5510	0	5263	75	0

The all-atom clashscore is defined as the number of clashes found per 1000 atoms (including hydrogen atoms). The all-atom clashscore for this structure is 7.

All (75) close contacts within the same asymmetric unit are listed below, sorted by their clash magnitude.

Atom-1	Atom-2	Interatomic distance (Å)	Clash overlap (Å)
1:B:34:LYS:CE	1:B:34:LYS:NZ	1.68	1.53
1:A:245:ASP:HB2	1:A:246:ASN:CB	1.46	1.44
1:A:245:ASP:HB2	1:A:246:ASN:HB2	1.19	1.10
1:A:245:ASP:HB2	1:A:246:ASN:HB3	1.17	1.07
1:A:245:ASP:CB	1:A:246:ASN:CB	2.37	1.03
1:A:245:ASP:CB	1:A:246:ASN:HB2	1.96	0.96
1:A:245:ASP:CB	1:A:246:ASN:HB3	1.97	0.88
1:B:80:ARG:HG3	1:B:81:ARG:HB2	1.59	0.85
1:A:258:GLN:HE22	1:B:239:LYS:HZ1	1.25	0.80
1:A:259:SER:OG	1:A:317:SER:HB3	1.87	0.75
1:A:169:GLN:NE2	1:A:172:ILE:HD12	2.06	0.71

Continued on next page...

Continued from previous page...

Atom-1	Atom-2	Interatomic distance (Å)	Clash overlap (Å)
1:A:258:GLN:HE22	1:B:239:LYS:NZ	1.91	0.69
1:B:68:LYS:HB2	5:B:541:HOH:O	1.93	0.68
1:A:47:ASN:H	1:A:47:ASN:HD22	1.45	0.65
1:A:126:SER:HB3	2:A:403:SO4:O1	1.96	0.64
1:A:47:ASN:H	1:A:47:ASN:ND2	1.95	0.64
1:A:254:THR:HB	1:A:258:GLN:HB3	1.80	0.63
1:A:124:ASN:HB3	1:A:165:ASN:ND2	2.16	0.60
1:B:35:GLU:O	1:B:36:VAL:HB	2.00	0.60
1:A:124:ASN:HB3	1:A:165:ASN:HD21	1.67	0.59
1:A:299:GLU:HG2	5:A:622:HOH:O	2.03	0.59
1:B:130:ILE:HB	1:B:180:MET:HG2	1.85	0.58
1:B:44:LEU:HD11	1:B:272:ASP:HB3	1.87	0.56
1:A:258:GLN:NE2	1:B:239:LYS:HZ1	2.01	0.56
1:A:292:ILE:HD11	1:A:301:LEU:HD11	1.89	0.55
1:A:324:THR:O	1:A:328:ARG:HG2	2.07	0.55
1:B:169:GLN:H	1:B:173:ASN:HB2	1.72	0.55
1:A:288:VAL:O	1:A:292:ILE:HG12	2.07	0.54
1:B:69:LYS:HG2	1:B:98:ASP:HB3	1.91	0.53
1:A:254:THR:CB	1:A:258:GLN:HB3	2.39	0.52
1:B:213:LYS:HE3	1:B:239:LYS:HG3	1.92	0.52
1:A:46:LYS:HG2	5:A:580:HOH:O	2.09	0.52
1:A:14:ARG:NH1	5:A:534:HOH:O	2.43	0.52
1:A:5:ILE:O	1:A:12:PRO:HA	2.09	0.51
1:B:220:ILE:HA	5:B:550:HOH:O	2.11	0.51
1:A:202:ASP:N	1:A:203:ASN:HA	2.27	0.49
1:A:245:ASP:CA	1:A:246:ASN:HB3	2.41	0.49
1:B:232:LYS:NZ	1:B:249:GLN:HE22	2.10	0.49
1:A:8:LYS:HE2	1:A:311:ILE:HA	1.95	0.48
1:A:178:ILE:HB	1:A:179:PRO:HD3	1.95	0.48
1:A:147:THR:O	1:A:151:GLN:HG2	2.12	0.47
1:B:166:VAL:HG21	1:B:191:ILE:HD11	1.95	0.47
1:A:199:VAL:HG21	1:A:316:TYR:OH	2.15	0.46
1:B:315:ARG:HH12	1:B:318:ASP:HB3	1.79	0.46
1:A:6:LYS:NZ	1:B:323:GLN:HE22	2.14	0.46
1:A:280:PHE:O	1:A:281:ALA:HB2	2.16	0.46
1:B:278:CYS:HB2	1:B:314:ASP:HB3	1.97	0.45
1:A:278:CYS:HB2	1:A:314:ASP:HB3	1.99	0.45
1:B:147:THR:O	1:B:151:GLN:HG2	2.16	0.45
1:B:196:PHE:CE2	1:B:198:ASP:HB2	2.52	0.45
1:B:76:GLU:OE1	1:B:103:THR:OG1	2.25	0.45
1:A:214:ASP:HB3	1:B:230:GLU:HG2	1.98	0.44

Continued on next page...

Continued from previous page...

Atom-1	Atom-2	Interatomic distance (Å)	Clash overlap (Å)
1:A:197:MET:CE	1:A:280:PHE:HZ	2.29	0.44
1:B:124:ASN:OD1	1:B:165:ASN:OD1	2.34	0.44
1:A:299:GLU:CG	5:A:622:HOH:O	2.64	0.44
1:A:74:GLY:HA3	1:A:75:GLY:C	2.38	0.43
1:B:4:GLN:NE2	1:B:14:ARG:HH21	2.16	0.43
1:A:258:GLN:NE2	1:B:258:GLN:OE1	2.51	0.43
1:B:178:ILE:HG13	5:B:550:HOH:O	2.17	0.43
1:B:54:GLU:HG2	1:B:292:ILE:HG21	2.00	0.43
1:A:245:ASP:CA	1:A:246:ASN:CB	2.97	0.42
1:B:83:LEU:HB3	1:B:115:LEU:HD21	2.00	0.42
1:B:63:ALA:HB1	1:B:95:GLY:HA3	2.01	0.42
1:B:329:GLN:HB3	1:B:329:GLN:HE21	1.74	0.42
1:B:34:LYS:CD	1:B:34:LYS:NZ	2.69	0.41
1:B:324:THR:O	1:B:328:ARG:HG2	2.20	0.41
1:B:129:ALA:HB2	1:B:134:LEU:HD13	2.02	0.41
1:A:84:ASP:OD1	1:A:114:LYS:HE3	2.21	0.41
1:A:28:CYS:HA	1:A:138:ILE:O	2.21	0.41
1:B:328:ARG:O	1:B:329:GLN:C	2.59	0.41
1:A:297:THR:OG1	1:A:299:GLU:HG3	2.20	0.41
1:B:199:VAL:HG21	1:B:316:TYR:OH	2.20	0.41
1:A:166:VAL:HG21	1:A:191:ILE:HD11	2.03	0.40
1:B:84:ASP:HB3	1:B:114:LYS:HG3	2.02	0.40
1:A:301:LEU:HD12	1:A:301:LEU:HA	1.90	0.40

There are no symmetry-related clashes.

5.3 Torsion angles [i](#)

5.3.1 Protein backbone [i](#)

In the following table, the Percentiles column shows the percent Ramachandran outliers of the chain as a percentile score with respect to all X-ray entries followed by that with respect to entries of similar resolution.

The Analysed column shows the number of residues for which the backbone conformation was analysed, and the total number of residues.

Mol	Chain	Analysed	Favoured	Allowed	Outliers	Percentiles	
1	A	325/340 (96%)	310 (95%)	12 (4%)	3 (1%)	21	18
1	B	324/340 (95%)	309 (95%)	12 (4%)	3 (1%)	21	18

Continued on next page...

Continued from previous page...

Mol	Chain	Analysed	Favoured	Allowed	Outliers	Percentiles
All	All	649/680 (95%)	619 (95%)	24 (4%)	6 (1%)	21 18

All (6) Ramachandran outliers are listed below:

Mol	Chain	Res	Type
1	A	246	ASN
1	B	174	ASP
1	A	281	ALA
1	A	245	ASP
1	B	315	ARG
1	B	36	VAL

5.3.2 Protein sidechains ⓘ

In the following table, the Percentiles column shows the percent sidechain outliers of the chain as a percentile score with respect to all X-ray entries followed by that with respect to entries of similar resolution.

The Analysed column shows the number of residues for which the sidechain conformation was analysed, and the total number of residues.

Mol	Chain	Analysed	Rotameric	Outliers	Percentiles
1	A	288/299 (96%)	277 (96%)	11 (4%)	40 49
1	B	287/299 (96%)	270 (94%)	17 (6%)	24 24
All	All	575/598 (96%)	547 (95%)	28 (5%)	31 34

All (28) residues with a non-rotameric sidechain are listed below:

Mol	Chain	Res	Type
1	A	47	ASN
1	A	120	LEU
1	A	192	ARG
1	A	202	ASP
1	A	214	ASP
1	A	255	SER
1	A	259	SER
1	A	269	LEU
1	A	282	THR
1	A	299	GLU
1	A	329	GLN
1	B	13	ILE

Continued on next page...

Continued from previous page...

Mol	Chain	Res	Type
1	B	51	THR
1	B	60	LYS
1	B	73	THR
1	B	83	LEU
1	B	94	ASP
1	B	134	LEU
1	B	192	ARG
1	B	226	ILE
1	B	246	ASN
1	B	255	SER
1	B	262	SER
1	B	292	ILE
1	B	311	ILE
1	B	315	ARG
1	B	320	ARG
1	B	329	GLN

Some sidechains can be flipped to improve hydrogen bonding and reduce clashes. All (14) such sidechains are listed below:

Mol	Chain	Res	Type
1	A	47	ASN
1	A	92	GLN
1	A	169	GLN
1	A	223	HIS
1	A	249	GLN
1	A	258	GLN
1	B	4	GLN
1	B	91	ASN
1	B	111	HIS
1	B	136	GLN
1	B	246	ASN
1	B	249	GLN
1	B	323	GLN
1	B	329	GLN

5.3.3 RNA ⓘ

There are no RNA molecules in this entry.

5.4 Non-standard residues in protein, DNA, RNA chains ⓘ

There are no non-standard protein/DNA/RNA residues in this entry.

5.5 Carbohydrates ⓘ

There are no carbohydrates in this entry.

5.6 Ligand geometry ⓘ

8 ligands are modelled in this entry.

In the following table, the Counts columns list the number of bonds (or angles) for which Mogul statistics could be retrieved, the number of bonds (or angles) that are observed in the model and the number of bonds (or angles) that are defined in the chemical component dictionary. The Link column lists molecule types, if any, to which the group is linked. The Z score for a bond length (or angle) is the number of standard deviations the observed value is removed from the expected value. A bond length (or angle) with $|Z| > 2$ is considered an outlier worth inspection. RMSZ is the root-mean-square of all Z scores of the bond lengths (or angles).

Mol	Type	Chain	Res	Link	Bond lengths			Bond angles		
					Counts	RMSZ	$\# Z > 2$	Counts	RMSZ	$\# Z > 2$
4	SF4	A	401	1,3	0,12,12	0.00	-	0,24,24	0.00	-
4	SF4	A	402	1	0,12,12	0.00	-	0,24,24	0.00	-
2	SO4	A	403	-	4,4,4	0.44	0	6,6,6	0.47	0
3	SAM	A	501	4	21,29,29	1.17	2 (9%)	17,42,42	3.36	4 (23%)
4	SF4	B	401	1,3	0,12,12	0.00	-	0,24,24	0.00	-
4	SF4	B	402	1	0,12,12	0.00	-	0,24,24	0.00	-
2	SO4	B	403	-	4,4,4	0.15	0	6,6,6	0.48	0
3	SAM	B	501	4	21,29,29	1.16	2 (9%)	17,42,42	3.60	5 (29%)

In the following table, the Chirals column lists the number of chiral outliers, the number of chiral centers analysed, the number of these observed in the model and the number defined in the chemical component dictionary. Similar counts are reported in the Torsion and Rings columns. '-' means no outliers of that kind were identified.

Mol	Type	Chain	Res	Link	Chirals	Torsions	Rings
4	SF4	A	401	1,3	-	0/0/48/48	0/6/5/5
4	SF4	A	402	1	-	0/0/48/48	0/6/5/5
2	SO4	A	403	-	-	0/0/0/0	0/0/0/0
3	SAM	A	501	4	-	0/8/33/33	0/3/3/3
4	SF4	B	401	1,3	-	0/0/48/48	0/6/5/5
4	SF4	B	402	1	-	0/0/48/48	0/6/5/5

Continued on next page...

Continued from previous page...

Mol	Type	Chain	Res	Link	Chirals	Torsions	Rings
2	SO4	B	403	-	-	0/0/0/0	0/0/0/0
3	SAM	B	501	4	-	0/8/33/33	0/3/3/3

All (4) bond length outliers are listed below:

Mol	Chain	Res	Type	Atoms	Z	Observed(Å)	Ideal(Å)
3	A	501	SAM	C2-N1	2.46	1.38	1.33
3	B	501	SAM	C2-N1	2.63	1.38	1.33
3	B	501	SAM	C2-N3	3.84	1.39	1.32
3	A	501	SAM	C2-N3	4.01	1.39	1.32

All (9) bond angle outliers are listed below:

Mol	Chain	Res	Type	Atoms	Z	Observed(°)	Ideal(°)
3	B	501	SAM	N3-C2-N1	-12.31	119.47	128.89
3	A	501	SAM	N3-C2-N1	-12.04	119.68	128.89
3	B	501	SAM	C4'-O4'-C1'	-6.53	102.55	109.72
3	A	501	SAM	C4'-O4'-C1'	-4.54	104.73	109.72
3	A	501	SAM	C4-C5-N7	-2.48	107.20	109.48
3	B	501	SAM	C4-C5-N7	-2.29	107.37	109.48
3	B	501	SAM	C1'-N9-C4	-2.28	123.49	126.94
3	B	501	SAM	O4'-C1'-N9	3.21	114.81	108.10
3	A	501	SAM	O4'-C1'-N9	3.35	115.10	108.10

There are no chirality outliers.

There are no torsion outliers.

There are no ring outliers.

1 monomer is involved in 1 short contact:

Mol	Chain	Res	Type	Clashes	Symm-Clashes
2	A	403	SO4	1	0

5.7 Other polymers ⓘ

There are no such residues in this entry.

5.8 Polymer linkage issues ⓘ

There are no chain breaks in this entry.

6 Fit of model and data

6.1 Protein, DNA and RNA chains

In the following table, the column labelled ‘#RSRZ> 2’ contains the number (and percentage) of RSRZ outliers, followed by percent RSRZ outliers for the chain as percentile scores relative to all X-ray entries and entries of similar resolution. The OWAB column contains the minimum, median, 95th percentile and maximum values of the occupancy-weighted average B-factor per residue. The column labelled ‘Q< 0.9’ lists the number of (and percentage) of residues with an average occupancy less than 0.9.

Mol	Chain	Analysed	<RSRZ>	#RSRZ>2	OWAB(Å ²)	Q<0.9
1	A	327/340 (96%)	0.51	18 (5%) 29 32	45, 55, 65, 74	0
1	B	326/340 (95%)	1.03	50 (15%) 3 3	40, 55, 68, 75	0
All	All	653/680 (96%)	0.77	68 (10%) 8 9	40, 55, 67, 75	0

All (68) RSRZ outliers are listed below:

Mol	Chain	Res	Type	RSRZ
1	B	282	THR	8.4
1	B	283	VAL	6.6
1	B	134	LEU	5.3
1	B	202	ASP	5.1
1	B	42	VAL	5.0
1	A	201	ASN	4.4
1	B	36	VAL	4.3
1	B	130	ILE	4.3
1	B	199	VAL	4.2
1	B	222	GLN	4.1
1	B	294	SER	4.1
1	A	202	ASP	3.9
1	B	242	ARG	3.8
1	B	40	ASP	3.8
1	B	41	PHE	3.7
1	A	186	ASP	3.7
1	B	131	ASP	3.6
1	B	69	LYS	3.6
1	B	72	ILE	3.6
1	B	70	ILE	3.5
1	B	183	TYR	3.5
1	A	122	ARG	3.4
1	B	176	GLN	3.4
1	B	223	HIS	3.4

Continued on next page...

Continued from previous page...

Mol	Chain	Res	Type	RSRZ
1	B	284	ASP	3.3
1	B	146	THR	3.3
1	A	124	ASN	3.1
1	B	149	LEU	3.0
1	B	201	ASN	3.0
1	B	226	ILE	3.0
1	B	303	GLU	3.0
1	B	122	ARG	3.0
1	B	99	ILE	2.9
1	B	186	ASP	2.9
1	A	170	LYS	2.8
1	B	132	ASP	2.8
1	B	100	GLY	2.7
1	B	46	LYS	2.7
1	B	245	ASP	2.7
1	B	38	GLY	2.7
1	A	242	ARG	2.7
1	A	72	ILE	2.6
1	B	225	GLU	2.6
1	B	47	ASN	2.6
1	B	101	LEU	2.5
1	B	37	PHE	2.5
1	B	203	ASN	2.5
1	B	30	TYR	2.4
1	A	123	ILE	2.4
1	B	174	ASP	2.4
1	A	101	LEU	2.4
1	B	182	GLU	2.3
1	A	70	ILE	2.3
1	B	175	ASP	2.3
1	B	20	VAL	2.2
1	B	28	CYS	2.2
1	B	136	GLN	2.2
1	A	120	LEU	2.2
1	B	145	ALA	2.1
1	A	99	ILE	2.1
1	A	182	GLU	2.1
1	A	199	VAL	2.1
1	A	223	HIS	2.1
1	B	96	ILE	2.1
1	B	29	ASP	2.0
1	A	3	GLU	2.0

Continued on next page...

Continued from previous page...

Mol	Chain	Res	Type	RSRZ
1	B	60	LYS	2.0
1	A	238	ALA	2.0

6.2 Non-standard residues in protein, DNA, RNA chains [i](#)

There are no non-standard protein/DNA/RNA residues in this entry.

6.3 Carbohydrates [i](#)

There are no carbohydrates in this entry.

6.4 Ligands [i](#)

In the following table, the Atoms column lists the number of modelled atoms in the group and the number defined in the chemical component dictionary. LLDF column lists the quality of electron density of the group with respect to its neighbouring residues in protein, DNA or RNA chains. The B-factors column lists the minimum, median, 95th percentile and maximum values of B factors of atoms in the group. The column labelled 'Q< 0.9' lists the number of atoms with occupancy less than 0.9.

Mol	Type	Chain	Res	Atoms	RSCC	RSR	LLDF	B-factors(Å ²)	Q<0.9
2	SO4	B	403	5/5	0.94	0.27	2.44	79,80,81,82	0
2	SO4	A	403	5/5	0.94	0.21	1.87	65,66,73,73	0
3	SAM	B	501	27/27	0.91	0.18	0.18	68,77,79,80	0
3	SAM	A	501	27/27	0.96	0.11	-1.50	55,65,67,67	0
4	SF4	B	401	8/8	0.97	0.09	-1.51	54,54,55,56	0
4	SF4	A	401	8/8	0.96	0.08	-2.56	49,51,53,55	0
4	SF4	B	402	8/8	0.98	0.03	-3.79	51,52,54,55	0
4	SF4	A	402	8/8	0.97	0.06	-4.87	50,51,54,55	0

6.5 Other polymers [i](#)

There are no such residues in this entry.