



Full wwPDB X-ray Structure Validation Report ⓘ

Dec 20, 2016 – 02:07 PM EST

PDB ID : 5FBQ
Title : PI4KB in complex with Rab11 and the MI358 Inhibitor
Authors : Chalupska, D.; Mejdrova, I.; Nencka, R.; Boura, E.
Deposited on : 2015-12-14
Resolution : 3.79 Å(reported)

This is a Full wwPDB X-ray Structure Validation Report for a publicly released PDB entry.

We welcome your comments at validation@mail.wwpdb.org

A user guide is available at

<http://wwpdb.org/validation/2016/XrayValidationReportHelp>

with specific help available everywhere you see the ⓘ symbol.

The following versions of software and data (see [references ⓘ](#)) were used in the production of this report:

MolProbity : 4.02b-467
Mogul : 1.7.1 (RC1), CSD as537be (2016)
Xtriage (Phenix) : 1.9-1692
EDS : rb-20028442
Percentile statistics : 20151230.v01 (using entries in the PDB archive December 30th 2015)
Refmac : 5.8.0135
CCP4 : 6.5.0
Ideal geometry (proteins) : Engh & Huber (2001)
Ideal geometry (DNA, RNA) : Parkinson et al. (1996)
Validation Pipeline (wwPDB-VP) : rb-20028442

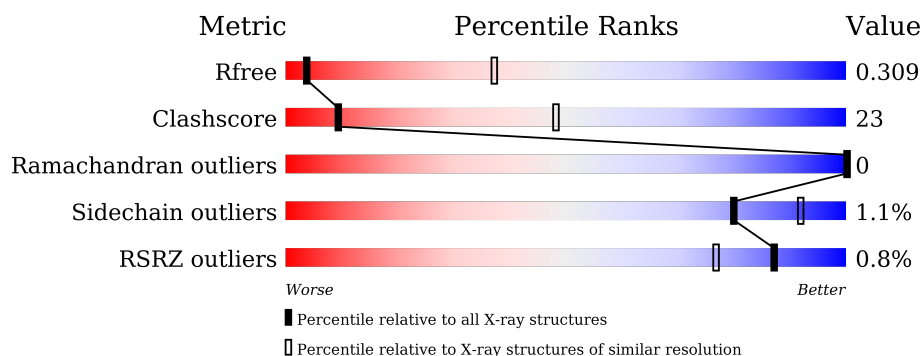
1 Overall quality at a glance

The following experimental techniques were used to determine the structure:

X-RAY DIFFRACTION

The reported resolution of this entry is 3.79 Å.

Percentile scores (ranging between 0-100) for global validation metrics of the entry are shown in the following graphic. The table shows the number of entries on which the scores are based.



Metric	Whole archive (#Entries)	Similar resolution (#Entries, resolution range(Å))
R_{free}	91344	1273 (4.06-3.50)
Clashscore	102246	1412 (4.06-3.50)
Ramachandran outliers	100387	1351 (4.06-3.50)
Sidechain outliers	100360	1347 (4.06-3.50)
RSRZ outliers	91569	1281 (4.06-3.50)

The table below summarises the geometric issues observed across the polymeric chains and their fit to the electron density. The red, orange, yellow and green segments on the lower bar indicate the fraction of residues that contain outliers for ≥ 3 , 2, 1 and 0 types of geometric quality criteria. A grey segment represents the fraction of residues that are not modelled. The numeric value for each fraction is indicated below the corresponding segment, with a dot representing fractions $\leq 5\%$. The upper red bar (where present) indicates the fraction of residues that have poor fit to the electron density. The numeric value is given above the bar.

Mol	Chain	Length	Quality of chain
1	A	572	
2	B	221	

2 Entry composition

There are 4 unique types of molecules in this entry. The entry contains 5039 atoms, of which 12 are hydrogens and 0 are deuteriums.

In the tables below, the ZeroOcc column contains the number of atoms modelled with zero occupancy, the AltConf column contains the number of residues with at least one atom in alternate conformation and the Trace column contains the number of residues modelled with at most 2 atoms.

- Molecule 1 is a protein called Phosphatidylinositol 4-kinase beta, Phosphatidylinositol 4-kinase beta.

Mol	Chain	Residues	Atoms					ZeroOcc	AltConf	Trace
1	A	467	Total	C	N	O	S	0	0	0
			3759	2415	650	670	24			

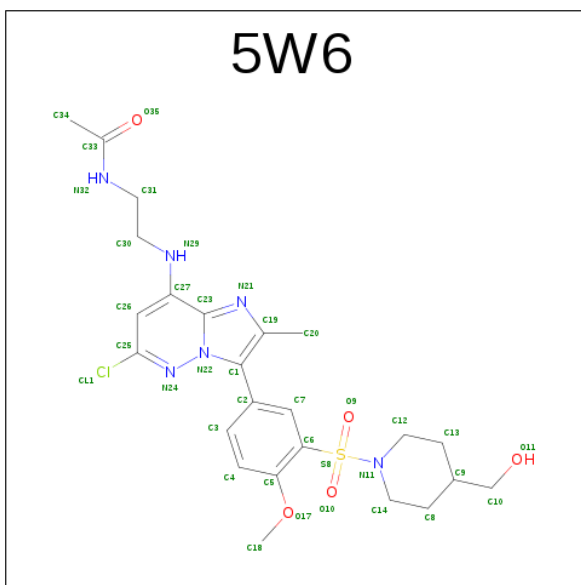
- Molecule 2 is a protein called Ras-related protein Rab-11A.

Mol	Chain	Residues	Atoms					ZeroOcc	AltConf	Trace
2	B	162	Total	C	N	O	S	0	0	0
			1203	763	204	235	1			

There are 5 discrepancies between the modelled and reference sequences:

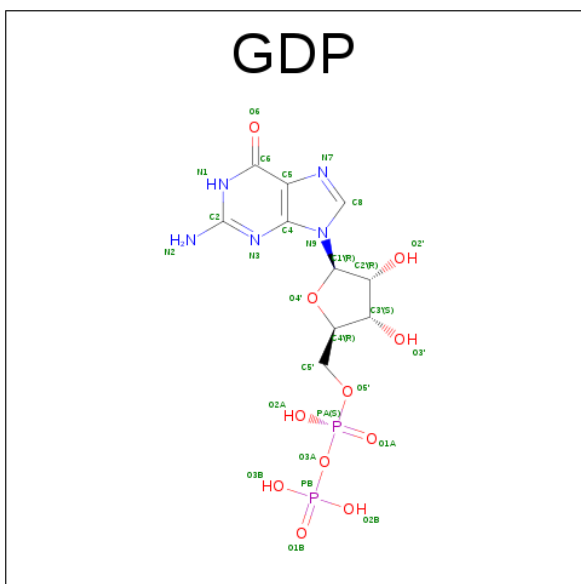
Chain	Residue	Modelled	Actual	Comment	Reference
B	-4	GLY	-	expression tag	UNP P62491
B	-3	ALA	-	expression tag	UNP P62491
B	-2	MET	-	expression tag	UNP P62491
B	-1	GLY	-	expression tag	UNP P62491
B	0	SER	-	expression tag	UNP P62491

- Molecule 3 is {N}-[2-[[6-chloranyl-3-[3-[4-(hydroxymethyl)piperidin-1-yl]sulfonyl-4-methoxy-phenyl]-2-methyl-imidazo[1,2-b]pyridazin-8-yl]amino]ethyl]ethanamide (three-letter code: 5W6) (formula: C₂₄H₃₁ClN₆O₅S).



Mol	Chain	Residues	Atoms						ZeroOcc	AltConf
3	A	1	Total	C	Cl	N	O	S	0	0
			37	24	1	6	5	1		

- Molecule 4 is GUANOSINE-5'-DIPHOSPHATE (three-letter code: GDP) (formula: $\text{C}_{10}\text{H}_{15}\text{N}_5\text{O}_{11}\text{P}_2$).



Mol	Chain	Residues	Atoms						ZeroOcc	AltConf
4	B	1	Total	C	H	N	O	P	0	0
			40	10	12	5	11	2		

4 Data and refinement statistics

Property	Value	Source
Space group	P 21 21 21	Depositor
Cell constants a, b, c, α , β , γ	48.76Å 101.16Å 188.49Å 90.00° 90.00° 90.00°	Depositor
Resolution (Å)	48.85 – 3.79 48.85 – 3.78	Depositor EDS
% Data completeness (in resolution range)	96.1 (48.85-3.79) 87.1 (48.85-3.78)	Depositor EDS
R_{merge}	0.21	Depositor
R_{sym}	(Not available)	Depositor
$\langle I/\sigma(I) \rangle$ ¹	1.57 (at 3.77Å)	Xtriage
Refinement program	PHENIX (phenix.refine: 1.9_1692)	Depositor
R, R_{free}	0.248 , 0.302 0.246 , 0.309	Depositor DCC
R_{free} test set	421 reflections (4.91%)	DCC
Wilson B-factor (Å ²)	112.3	Xtriage
Anisotropy	0.854	Xtriage
Bulk solvent k_{sol} (e/Å ³), B_{sol} (Å ²)	0.32 , 81.9	EDS
L-test for twinning ²	$\langle L \rangle = 0.43$, $\langle L^2 \rangle = 0.26$	Xtriage
Estimated twinning fraction	No twinning to report.	Xtriage
F_o, F_c correlation	0.91	EDS
Total number of atoms	5039	wwPDB-VP
Average B, all atoms (Å ²)	128.0	wwPDB-VP

Xtriage's analysis on translational NCS is as follows: *The largest off-origin peak in the Patterson function is 3.78% of the height of the origin peak. No significant pseudotranslation is detected.*

¹Intensities estimated from amplitudes.

²Theoretical values of $\langle |L| \rangle$, $\langle L^2 \rangle$ for acentric reflections are 0.5, 0.333 respectively for untwinned datasets, and 0.375, 0.2 for perfectly twinned datasets.

5 Model quality [i](#)

5.1 Standard geometry [i](#)

Bond lengths and bond angles in the following residue types are not validated in this section: GDP, 5W6

The Z score for a bond length (or angle) is the number of standard deviations the observed value is removed from the expected value. A bond length (or angle) with $|Z| > 5$ is considered an outlier worth inspection. RMSZ is the root-mean-square of all Z scores of the bond lengths (or angles).

Mol	Chain	Bond lengths		Bond angles	
		RMSZ	$\# Z > 5$	RMSZ	$\# Z > 5$
1	A	0.22	0/3836	0.44	1/5179 (0.0%)
2	B	0.24	0/1219	0.51	0/1660
All	All	0.22	0/5055	0.46	1/6839 (0.0%)

Chiral center outliers are detected by calculating the chiral volume of a chiral center and verifying if the center is modelled as a planar moiety or with the opposite hand. A planarity outlier is detected by checking planarity of atoms in a peptide group, atoms in a mainchain group or atoms of a sidechain that are expected to be planar.

Mol	Chain	#Chirality outliers	#Planarity outliers
2	B	0	1

There are no bond length outliers.

All (1) bond angle outliers are listed below:

Mol	Chain	Res	Type	Atoms	Z	Observed($^{\circ}$)	Ideal($^{\circ}$)
1	A	348	LEU	C-N-CD	-8.42	102.07	120.60

There are no chirality outliers.

All (1) planarity outliers are listed below:

Mol	Chain	Res	Type	Group
2	B	47	GLU	Peptide

5.2 Too-close contacts [i](#)

In the following table, the Non-H and H(model) columns list the number of non-hydrogen atoms and hydrogen atoms in the chain respectively. The H(added) column lists the number of hydrogen atoms added and optimized by MolProbity. The Clashes column lists the number of clashes within

the asymmetric unit, whereas Symm-Clashes lists symmetry related clashes.

Mol	Chain	Non-H	H(model)	H(added)	Clashes	Symm-Clashes
1	A	3759	0	3805	154	0
2	B	1203	0	1158	78	0
3	A	37	0	0	5	0
4	B	28	12	12	0	0
All	All	5027	12	4975	227	0

The all-atom clashscore is defined as the number of clashes found per 1000 atoms (including hydrogen atoms). The all-atom clashscore for this structure is 23.

All (227) close contacts within the same asymmetric unit are listed below, sorted by their clash magnitude.

Atom-1	Atom-2	Interatomic distance (Å)	Clash overlap (Å)
1:A:348:LEU:CD1	1:A:349:PRO:HD3	1.44	1.45
1:A:348:LEU:CG	1:A:349:PRO:HD3	1.58	1.34
1:A:348:LEU:CG	1:A:349:PRO:CD	2.06	1.32
1:A:348:LEU:CD1	1:A:349:PRO:CD	2.16	1.24
1:A:348:LEU:HD12	1:A:349:PRO:CD	1.69	1.19
1:A:348:LEU:HG	1:A:349:PRO:CD	1.65	1.19
1:A:348:LEU:CG	1:A:349:PRO:HD2	1.78	1.08
1:A:348:LEU:HD12	1:A:349:PRO:HD3	1.01	1.00
1:A:348:LEU:HG	1:A:349:PRO:HD2	0.98	0.97
2:B:175:ILE:HD13	2:B:176:VAL:CG2	1.94	0.97
1:A:348:LEU:CB	1:A:349:PRO:HD3	1.96	0.96
2:B:88:LEU:HD23	2:B:120:MET:HB3	1.54	0.89
2:B:175:ILE:HD13	2:B:176:VAL:HG23	1.53	0.89
1:A:348:LEU:HD12	1:A:349:PRO:CG	2.06	0.85
1:A:306:ARG:HH21	1:A:309:PRO:HD3	1.42	0.84
1:A:571:GLN:HE21	1:A:693:ILE:HG12	1.44	0.82
1:A:673:HIS:HA	1:A:709:LYS:HE2	1.64	0.80
1:A:641:TYR:HA	1:A:646:PHE:CD2	2.17	0.79
2:B:14:VAL:HB	2:B:64:ILE:HD13	1.66	0.77
2:B:175:ILE:HD13	2:B:176:VAL:HG22	1.66	0.77
1:A:579:LEU:HD21	1:A:663:VAL:HG11	1.68	0.76
1:A:206:ILE:HD11	1:A:394:PHE:CD2	2.21	0.75
1:A:348:LEU:CD1	1:A:349:PRO:CG	2.65	0.75
2:B:31:PHE:O	2:B:51:ARG:NH1	2.19	0.74
2:B:120:MET:HB2	2:B:168:ILE:HD12	1.70	0.73
1:A:614:VAL:HG12	3:A:801:5W6:C34	2.20	0.72
1:A:389:LEU:HD22	1:A:555:ASN:HB3	1.73	0.71
1:A:643:THR:HG23	1:A:646:PHE:H	1.55	0.70

Continued on next page...

Continued from previous page...

Atom-1	Atom-2	Interatomic distance (Å)	Clash overlap (Å)
2:B:175:ILE:HD12	2:B:176:VAL:N	2.07	0.69
1:A:139:PHE:HA	1:A:143:MET:HE2	1.74	0.69
2:B:94:ALA:HB1	2:B:131:LEU:HD22	1.73	0.69
1:A:735:GLN:HG2	2:B:44:ILE:HB	1.74	0.69
1:A:751:VAL:HG12	1:A:769:ILE:HD11	1.73	0.69
2:B:175:ILE:H	2:B:175:ILE:HD12	1.59	0.68
1:A:348:LEU:HD12	1:A:349:PRO:HG3	1.73	0.68
1:A:149:TYR:HB2	1:A:182:MET:CE	2.25	0.67
1:A:329:THR:HG23	1:A:332:GLN:H	1.60	0.67
2:B:17:ILE:HD13	2:B:109:LEU:HD11	1.75	0.66
2:B:175:ILE:O	2:B:176:VAL:HG13	1.95	0.66
1:A:348:LEU:HD13	1:A:364:VAL:O	1.96	0.66
2:B:28:LEU:HD11	2:B:49:ALA:HB3	1.76	0.65
1:A:389:LEU:HB3	1:A:555:ASN:ND2	2.12	0.65
2:B:175:ILE:C	2:B:176:VAL:HG22	2.16	0.65
2:B:118:VAL:HB	2:B:172:ILE:HD11	1.79	0.65
2:B:94:ALA:HB1	2:B:131:LEU:CD2	2.26	0.65
1:A:571:GLN:NE2	1:A:693:ILE:HG12	2.12	0.64
1:A:738:ILE:HD12	2:B:44:ILE:HD13	1.81	0.63
1:A:348:LEU:HD11	1:A:550:TYR:OH	1.97	0.63
1:A:202:CYS:CB	1:A:240:ILE:HD11	2.30	0.62
1:A:673:HIS:HA	1:A:709:LYS:CE	2.28	0.62
1:A:751:VAL:HG12	1:A:769:ILE:CD1	2.30	0.62
2:B:55:VAL:HG22	2:B:60:ILE:HD13	1.82	0.61
1:A:195:LYS:HB3	1:A:196:PRO:HD3	1.83	0.61
1:A:598:TYR:OH	1:A:688:ILE:O	2.19	0.60
1:A:367:PRO:HD2	1:A:385:TYR:O	2.01	0.60
1:A:652:ASN:HB3	1:A:684:HIS:CD2	2.37	0.60
1:A:675:GLY:O	3:A:801:5W6:O11	2.20	0.60
1:A:363:VAL:HA	1:A:388:VAL:HG12	1.84	0.60
1:A:633:TYR:CZ	1:A:637:GLU:HG3	2.37	0.60
1:A:206:ILE:HD11	1:A:394:PHE:HD2	1.63	0.60
1:A:310:GLU:HA	1:A:352:VAL:HG12	1.84	0.59
1:A:182:MET:HE3	1:A:753:ILE:HD13	1.85	0.59
2:B:105:TRP:O	2:B:109:LEU:HD13	2.03	0.58
1:A:149:TYR:HB2	1:A:182:MET:HE2	1.84	0.58
2:B:131:LEU:O	2:B:131:LEU:HD23	2.02	0.58
1:A:635:LEU:CD2	1:A:640:SER:HA	2.35	0.57
2:B:175:ILE:O	2:B:176:VAL:HG22	2.05	0.57
2:B:53:ILE:HD11	2:B:169:LEU:HD12	1.87	0.56
2:B:154:SER:O	2:B:158:SER:N	2.36	0.56

Continued on next page...

Continued from previous page...

Atom-1	Atom-2	Interatomic distance (Å)	Clash overlap (Å)
1:A:341:LEU:O	1:A:344:LEU:HB2	2.05	0.56
1:A:612:PRO:HA	3:A:801:5W6:C20	2.36	0.55
1:A:324:LEU:O	1:A:333:LYS:HE3	2.06	0.55
1:A:724:ASP:HB3	2:B:65:TRP:CH2	2.42	0.55
1:A:329:THR:HG22	1:A:332:GLN:HB2	1.87	0.55
1:A:327:LEU:HD11	1:A:336:ARG:NE	2.22	0.55
2:B:89:LEU:HD22	2:B:121:LEU:CD1	2.37	0.55
1:A:319:ALA:HB1	1:A:323:ARG:HH12	1.72	0.54
1:A:310:GLU:HA	1:A:352:VAL:CG1	2.38	0.54
1:A:345:ASN:O	1:A:348:LEU:HD23	2.07	0.54
2:B:143:ALA:HA	2:B:148:LEU:HD11	1.88	0.54
2:B:74:ARG:O	2:B:76:ILE:HG12	2.08	0.54
1:A:356:THR:HG21	1:A:561:VAL:HG12	1.90	0.54
1:A:134:PHE:O	1:A:163:ARG:NH1	2.41	0.54
1:A:202:CYS:SG	1:A:209:SER:HA	2.48	0.54
2:B:127:ASP:OD2	2:B:156:LEU:HD22	2.09	0.53
2:B:16:LEU:CD2	2:B:88:LEU:HB2	2.39	0.53
1:A:635:LEU:HD22	1:A:640:SER:HA	1.91	0.53
2:B:175:ILE:HD12	2:B:176:VAL:H	1.73	0.53
1:A:781:THR:HG22	1:A:784:GLN:CG	2.39	0.53
1:A:403:ILE:HB	1:A:550:TYR:CE2	2.44	0.53
2:B:14:VAL:HB	2:B:64:ILE:CD1	2.37	0.52
1:A:568:ASP:C	1:A:569:LEU:HD23	2.29	0.52
1:A:640:SER:O	1:A:643:THR:HG22	2.09	0.52
1:A:348:LEU:CD1	1:A:349:PRO:HG3	2.36	0.52
1:A:330:LYS:HE3	1:A:373:VAL:O	2.09	0.52
2:B:54:GLN:HG3	2:B:59:THR:HA	1.91	0.52
2:B:175:ILE:CD1	2:B:176:VAL:HG23	2.34	0.52
1:A:318:MET:HE1	1:A:563:VAL:HG13	1.92	0.51
1:A:710:LEU:N	1:A:796:SER:O	2.31	0.51
1:A:537:TRP:HB2	1:A:614:VAL:HB	1.91	0.51
2:B:118:VAL:HB	2:B:172:ILE:CD1	2.41	0.51
1:A:579:LEU:HD11	1:A:690:PHE:CZ	2.45	0.51
1:A:724:ASP:HB3	2:B:65:TRP:HH2	1.74	0.51
1:A:367:PRO:HG2	1:A:385:TYR:HB2	1.92	0.51
2:B:140:ARG:HA	2:B:143:ALA:HB3	1.92	0.50
2:B:17:ILE:HD13	2:B:109:LEU:HD21	1.93	0.50
1:A:362:HIS:NE2	1:A:399:VAL:HG12	2.26	0.50
2:B:121:LEU:HB2	2:B:148:LEU:HD13	1.94	0.50
1:A:306:ARG:NH2	1:A:309:PRO:HD3	2.20	0.50
1:A:403:ILE:HB	1:A:550:TYR:CZ	2.47	0.50

Continued on next page...

Continued from previous page...

Atom-1	Atom-2	Interatomic distance (Å)	Clash overlap (Å)
1:A:403:ILE:HG22	1:A:549:PRO:HB3	1.94	0.50
2:B:175:ILE:CD1	2:B:176:VAL:N	2.73	0.49
2:B:9:ASP:HB2	2:B:59:THR:O	2.11	0.49
2:B:165:PHE:O	2:B:168:ILE:HG22	2.13	0.49
1:A:594:TRP:CH2	1:A:596:LYS:HB2	2.47	0.49
1:A:793:VAL:O	1:A:796:SER:OG	2.26	0.49
2:B:172:ILE:C	2:B:174:ARG:N	2.64	0.49
1:A:194:ILE:HG22	1:A:198:ILE:HD12	1.95	0.49
2:B:50:THR:HG22	2:B:63:GLN:HA	1.94	0.49
2:B:19:ASP:OD2	2:B:101:ASN:ND2	2.42	0.49
1:A:206:ILE:HG12	1:A:395:ASP:OD1	2.13	0.48
1:A:591:VAL:HG12	1:A:593:LEU:HG	1.95	0.48
1:A:728:TYR:CE2	1:A:732:LEU:HD11	2.48	0.48
1:A:564:LYS:HE3	1:A:567:ASP:HB2	1.95	0.48
1:A:586:TRP:CE2	1:A:593:LEU:HD12	2.49	0.48
1:A:237:ARG:O	1:A:240:ILE:HG22	2.14	0.48
1:A:688:ILE:HB	3:A:801:5W6:C4	2.44	0.48
1:A:201:ARG:HD2	1:A:204:GLN:NE2	2.29	0.48
1:A:354:LEU:H	1:A:361:HIS:CE1	2.32	0.48
1:A:338:ILE:HG12	1:A:368:HIS:O	2.14	0.48
1:A:133:LEU:HG	1:A:143:MET:HE3	1.96	0.48
1:A:593:LEU:HD11	1:A:736:GLY:HA3	1.96	0.48
1:A:533:LEU:HG	1:A:534:LYS:H	1.79	0.47
1:A:568:ASP:O	1:A:569:LEU:HD23	2.14	0.47
1:A:672:ARG:HH22	1:A:689:ASP:HB3	1.79	0.47
1:A:356:THR:HG21	1:A:561:VAL:CG1	2.44	0.47
1:A:365:ARG:HB3	1:A:387:GLU:HB2	1.96	0.47
1:A:619:ILE:HG12	1:A:677:ILE:O	2.15	0.47
1:A:241:LEU:HD12	1:A:242:SER:N	2.29	0.47
1:A:318:MET:CE	1:A:563:VAL:HG13	2.45	0.47
1:A:749:GLN:O	1:A:753:ILE:HG13	2.15	0.47
2:B:60:ILE:HG22	2:B:61:LYS:N	2.29	0.47
1:A:184:ILE:O	1:A:232:ARG:HG2	2.15	0.47
1:A:673:HIS:HA	1:A:709:LYS:NZ	2.29	0.47
2:B:172:ILE:C	2:B:174:ARG:H	2.18	0.47
1:A:593:LEU:CD2	1:A:732:LEU:HB3	2.45	0.47
1:A:177:PRO:HB2	1:A:754:MET:HE1	1.97	0.47
2:B:175:ILE:HD12	2:B:175:ILE:N	2.24	0.47
1:A:206:ILE:HD12	1:A:353:TRP:CH2	2.50	0.46
2:B:16:LEU:HD23	2:B:88:LEU:HB2	1.97	0.46
1:A:310:GLU:CA	1:A:352:VAL:HG12	2.45	0.46

Continued on next page...

Continued from previous page...

Atom-1	Atom-2	Interatomic distance (Å)	Clash overlap (Å)
2:B:53:ILE:CD1	2:B:169:LEU:HD12	2.45	0.46
1:A:613:VAL:O	3:A:801:5W6:N29	2.49	0.46
1:A:672:ARG:NH2	1:A:689:ASP:O	2.48	0.46
1:A:177:PRO:HB2	1:A:754:MET:CE	2.45	0.46
1:A:306:ARG:HH21	1:A:309:PRO:CD	2.21	0.46
2:B:17:ILE:HD11	2:B:89:LEU:HD12	1.98	0.45
1:A:364:VAL:HG11	1:A:389:LEU:HG	1.98	0.45
1:A:781:THR:HG22	1:A:784:GLN:HG3	1.97	0.45
2:B:143:ALA:HB1	2:B:150:PHE:HB2	1.99	0.45
2:B:120:MET:CE	2:B:168:ILE:HB	2.46	0.45
1:A:365:ARG:HB3	1:A:387:GLU:CD	2.36	0.45
2:B:13:LYS:HE3	2:B:13:LYS:HB2	1.76	0.45
2:B:118:VAL:CG2	2:B:172:ILE:HD13	2.47	0.45
1:A:133:LEU:HG	1:A:143:MET:CE	2.47	0.45
1:A:176:LEU:N	1:A:177:PRO:CD	2.80	0.45
1:A:202:CYS:SG	1:A:240:ILE:HD11	2.56	0.45
1:A:348:LEU:HG	1:A:402:ARG:NH1	2.31	0.45
1:A:181:ASN:OD1	1:A:756:GLN:HB2	2.17	0.45
2:B:175:ILE:CD1	2:B:175:ILE:C	2.85	0.45
1:A:338:ILE:HG23	1:A:368:HIS:ND1	2.32	0.45
1:A:368:HIS:CE1	1:A:369:THR:HG23	2.52	0.44
1:A:783:GLU:H	1:A:783:GLU:CD	2.20	0.44
1:A:240:ILE:HG23	1:A:241:LEU:N	2.32	0.44
1:A:308:ALA:N	1:A:309:PRO:CD	2.80	0.44
2:B:173:TYR:CD2	2:B:173:TYR:O	2.70	0.44
1:A:772:LEU:HD13	1:A:775:ARG:HH21	1.83	0.44
1:A:312:GLU:HG3	1:A:313:PHE:N	2.33	0.44
2:B:172:ILE:O	2:B:174:ARG:N	2.51	0.44
1:A:533:LEU:HG	1:A:534:LYS:N	2.33	0.44
1:A:781:THR:HG23	1:A:784:GLN:H	1.83	0.44
1:A:314:ILE:HG21	1:A:603:ILE:HD13	2.00	0.44
2:B:124:ASN:HA	2:B:153:THR:O	2.18	0.43
1:A:598:TYR:CE1	1:A:600:ILE:HD11	2.53	0.43
1:A:657:CYS:HB3	1:A:729:TYR:CE1	2.53	0.43
2:B:50:THR:CG2	2:B:63:GLN:HG3	2.49	0.43
2:B:16:LEU:HD21	2:B:88:LEU:HD12	2.00	0.43
1:A:536:PRO:HB2	1:A:539:GLU:HG3	2.00	0.43
1:A:139:PHE:HD1	1:A:143:MET:HE2	1.82	0.43
1:A:178:GLN:N	1:A:178:GLN:OE1	2.52	0.43
2:B:88:LEU:CD2	2:B:120:MET:HB3	2.37	0.43
1:A:351:ARG:O	1:A:352:VAL:HG13	2.19	0.43

Continued on next page...

Continued from previous page...

Atom-1	Atom-2	Interatomic distance (Å)	Clash overlap (Å)
1:A:545:ARG:HG3	1:A:556:TRP:CZ3	2.53	0.43
2:B:175:ILE:C	2:B:176:VAL:CG2	2.85	0.43
1:A:327:LEU:HD11	1:A:336:ARG:CD	2.49	0.43
2:B:109:LEU:O	2:B:113:ALA:HB3	2.19	0.43
2:B:90:VAL:HG22	2:B:122:VAL:HB	2.01	0.43
1:A:306:ARG:HH21	1:A:308:ALA:HB3	1.84	0.42
1:A:755:GLN:O	1:A:755:GLN:HG2	2.19	0.42
2:B:118:VAL:HG21	2:B:172:ILE:HD13	2.00	0.42
2:B:60:ILE:CG2	2:B:61:LYS:N	2.82	0.42
2:B:58:LYS:O	2:B:60:ILE:HD12	2.18	0.42
2:B:148:LEU:O	2:B:148:LEU:HD12	2.19	0.42
1:A:593:LEU:HD21	1:A:732:LEU:HB3	2.01	0.42
2:B:120:MET:CB	2:B:168:ILE:HD12	2.46	0.42
1:A:149:TYR:HB2	1:A:182:MET:HE1	2.00	0.42
2:B:140:ARG:HA	2:B:143:ALA:CB	2.49	0.42
1:A:798:ARG:O	1:A:799:SER:CB	2.68	0.41
2:B:17:ILE:CD1	2:B:109:LEU:HD21	2.50	0.41
1:A:672:ARG:HA	1:A:672:ARG:NE	2.35	0.41
2:B:17:ILE:CD1	2:B:109:LEU:HD11	2.46	0.41
2:B:13:LYS:HD2	2:B:83:GLY:O	2.20	0.41
1:A:379:LYS:HE3	1:A:379:LYS:HB2	1.85	0.41
1:A:201:ARG:HB2	1:A:208:PHE:CE1	2.56	0.41
2:B:116:ASN:ND2	2:B:116:ASN:O	2.49	0.41
1:A:405:GLU:HA	1:A:405:GLU:OE1	2.19	0.41
1:A:635:LEU:HA	1:A:639:GLY:O	2.21	0.41
1:A:241:LEU:C	1:A:241:LEU:HD12	2.41	0.41
1:A:680:ASP:OD1	1:A:684:HIS:N	2.53	0.41
1:A:314:ILE:CG2	1:A:603:ILE:HD13	2.51	0.41
1:A:731:MET:HE1	2:B:44:ILE:HG22	2.02	0.41
1:A:308:ALA:HB3	1:A:309:PRO:HD3	2.02	0.40
1:A:182:MET:HA	1:A:186:MET:HG3	2.02	0.40
1:A:688:ILE:HG13	1:A:689:ASP:N	2.36	0.40
2:B:120:MET:HE3	2:B:168:ILE:HB	2.03	0.40
2:B:60:ILE:HD12	2:B:60:ILE:N	2.37	0.40
1:A:351:ARG:O	1:A:352:VAL:CG1	2.70	0.40

There are no symmetry-related clashes.

5.3 Torsion angles

5.3.1 Protein backbone

In the following table, the Percentiles column shows the percent Ramachandran outliers of the chain as a percentile score with respect to all X-ray entries followed by that with respect to entries of similar resolution.

The Analysed column shows the number of residues for which the backbone conformation was analysed, and the total number of residues.

Mol	Chain	Analysed	Favoured	Allowed	Outliers	Percentiles	
1	A	457/572 (80%)	443 (97%)	14 (3%)	0	100	100
2	B	158/221 (72%)	151 (96%)	7 (4%)	0	100	100
All	All	615/793 (78%)	594 (97%)	21 (3%)	0	100	100

There are no Ramachandran outliers to report.

5.3.2 Protein sidechains

In the following table, the Percentiles column shows the percent sidechain outliers of the chain as a percentile score with respect to all X-ray entries followed by that with respect to entries of similar resolution.

The Analysed column shows the number of residues for which the sidechain conformation was analysed, and the total number of residues.

Mol	Chain	Analysed	Rotameric	Outliers	Percentiles	
1	A	416/517 (80%)	414 (100%)	2 (0%)	92	97
2	B	122/191 (64%)	118 (97%)	4 (3%)	45	79
All	All	538/708 (76%)	532 (99%)	6 (1%)	80	92

All (6) residues with a non-rotameric sidechain are listed below:

Mol	Chain	Res	Type
1	A	351	ARG
1	A	405	GLU
2	B	46	VAL
2	B	156	LEU
2	B	175	ILE
2	B	176	VAL

Some sidechains can be flipped to improve hydrogen bonding and reduce clashes. All (2) such

sidechains are listed below:

Mol	Chain	Res	Type
1	A	555	ASN
1	A	571	GLN

5.3.3 RNA [i](#)

There are no RNA molecules in this entry.

5.4 Non-standard residues in protein, DNA, RNA chains [i](#)

There are no non-standard protein/DNA/RNA residues in this entry.

5.5 Carbohydrates [i](#)

There are no carbohydrates in this entry.

5.6 Ligand geometry [i](#)

2 ligands are modelled in this entry.

In the following table, the Counts columns list the number of bonds (or angles) for which Mogul statistics could be retrieved, the number of bonds (or angles) that are observed in the model and the number of bonds (or angles) that are defined in the chemical component dictionary. The Link column lists molecule types, if any, to which the group is linked. The Z score for a bond length (or angle) is the number of standard deviations the observed value is removed from the expected value. A bond length (or angle) with $|Z| > 2$ is considered an outlier worth inspection. RMSZ is the root-mean-square of all Z scores of the bond lengths (or angles).

Mol	Type	Chain	Res	Link	Bond lengths			Bond angles		
					Counts	RMSZ	# $ Z > 2$	Counts	RMSZ	# $ Z > 2$
3	5W6	A	801	-	36,40,40	2.80	6 (16%)	43,58,58	2.36	13 (30%)
4	GDP	B	301	-	24,30,30	1.27	2 (8%)	23,47,47	0.95	0

In the following table, the Chirals column lists the number of chiral outliers, the number of chiral centers analysed, the number of these observed in the model and the number defined in the chemical component dictionary. Similar counts are reported in the Torsion and Rings columns. '-' means no outliers of that kind were identified.

Mol	Type	Chain	Res	Link	Chirals	Torsions	Rings
3	5W6	A	801	-	-	2/27/37/37	0/4/4/4

Continued on next page...

Continued from previous page...

Mol	Type	Chain	Res	Link	Chirals	Torsions	Rings
4	GDP	B	301	-	-	0/12/32/32	0/3/3/3

All (8) bond length outliers are listed below:

Mol	Chain	Res	Type	Atoms	Z	Observed(Å)	Ideal(Å)
3	A	801	5W6	C6-S8	-13.90	1.60	1.77
4	B	301	GDP	C2-N2	2.37	1.35	1.32
3	A	801	5W6	C27-C23	3.16	1.49	1.42
3	A	801	5W6	C25-CL1	3.19	1.79	1.74
3	A	801	5W6	C23-N21	3.49	1.36	1.33
4	B	301	GDP	C6-C5	4.01	1.48	1.40
3	A	801	5W6	C25-N24	4.38	1.35	1.31
3	A	801	5W6	C1-C19	5.57	1.48	1.37

All (13) bond angle outliers are listed below:

Mol	Chain	Res	Type	Atoms	Z	Observed(°)	Ideal(°)
3	A	801	5W6	O9-S8-O10	-6.39	108.51	119.47
3	A	801	5W6	C26-C25-N24	-5.86	120.84	125.05
3	A	801	5W6	C2-C1-N22	-3.44	119.22	123.55
3	A	801	5W6	O17-C5-C4	-3.25	118.89	124.35
3	A	801	5W6	C12-N11-S8	-3.25	110.78	117.16
3	A	801	5W6	C14-N11-S8	-3.03	111.20	117.16
3	A	801	5W6	C14-N11-C12	-2.69	108.98	112.23
3	A	801	5W6	C6-S8-N11	2.50	111.75	106.82
3	A	801	5W6	O10-S8-N11	2.60	109.25	106.69
3	A	801	5W6	C19-N21-C23	2.97	109.07	103.48
3	A	801	5W6	C23-C27-N29	3.38	120.91	117.24
3	A	801	5W6	O17-C5-C6	4.99	121.23	116.49
3	A	801	5W6	CL1-C25-N24	6.03	119.76	115.29

There are no chirality outliers.

All (2) torsion outliers are listed below:

Mol	Chain	Res	Type	Atoms
3	A	801	5W6	C34-C33-N32-C31
3	A	801	5W6	O35-C33-N32-C31

There are no ring outliers.

1 monomer is involved in 5 short contacts:

Mol	Chain	Res	Type	Clashes	Symm-Clashes
3	A	801	5W6	5	0

5.7 Other polymers [i](#)

There are no such residues in this entry.

5.8 Polymer linkage issues [i](#)

There are no chain breaks in this entry.

6 Fit of model and data [i](#)

6.1 Protein, DNA and RNA chains [i](#)

In the following table, the column labelled ‘#RSRZ> 2’ contains the number (and percentage) of RSRZ outliers, followed by percent RSRZ outliers for the chain as percentile scores relative to all X-ray entries and entries of similar resolution. The OWAB column contains the minimum, median, 95th percentile and maximum values of the occupancy-weighted average B-factor per residue. The column labelled ‘Q< 0.9’ lists the number of (and percentage) of residues with an average occupancy less than 0.9.

Mol	Chain	Analysed	<RSRZ>	#RSRZ>2	OWAB(Å ²)	Q<0.9
1	A	467/572 (81%)	0.09	2 (0%) 93 87	85, 126, 155, 175	0
2	B	162/221 (73%)	0.18	3 (1%) 70 54	109, 136, 159, 173	0
All	All	629/793 (79%)	0.11	5 (0%) 87 77	85, 129, 157, 175	0

All (5) RSRZ outliers are listed below:

Mol	Chain	Res	Type	RSRZ
1	A	770	ARG	2.6
2	B	121	LEU	2.4
2	B	89	LEU	2.3
2	B	38	LEU	2.2
1	A	630	LEU	2.1

6.2 Non-standard residues in protein, DNA, RNA chains [i](#)

There are no non-standard protein/DNA/RNA residues in this entry.

6.3 Carbohydrates [i](#)

There are no carbohydrates in this entry.

6.4 Ligands [i](#)

In the following table, the Atoms column lists the number of modelled atoms in the group and the number defined in the chemical component dictionary. LLDF column lists the quality of electron density of the group with respect to its neighbouring residues in protein, DNA or RNA chains. The B-factors column lists the minimum, median, 95th percentile and maximum values of B factors of atoms in the group. The column labelled ‘Q< 0.9’ lists the number of atoms with occupancy less than 0.9.

Mol	Type	Chain	Res	Atoms	RSCC	RSR	LLDF	B-factors(\AA^2)	Q<0.9
3	5W6	A	801	37/37	0.84	0.36	0.76	110,119,138,140	0
4	GDP	B	301	28/28	0.88	0.23	-0.49	97,113,140,156	0

6.5 Other polymers [i](#)

There are no such residues in this entry.