



Full wwPDB X-ray Structure Validation Report ⓘ

Feb 1, 2016 – 02:08 AM GMT

PDB ID : 2FTD
Title : Crystal structure of Cathepsin K complexed with 7-Methyl-Substituted Azepan-3-one compound
Authors : Yamashita, D.S.; Baoguang, Z.
Deposited on : 2006-01-24
Resolution : 2.55 Å(reported)

This is a Full wwPDB X-ray Structure Validation Report for a publicly released PDB entry.
We welcome your comments at validation@mail.wwpdb.org
A user guide is available at
<http://wwpdb.org/validation/2016/XrayValidationReportHelp>
with specific help available everywhere you see the ⓘ symbol.

The following versions of software and data (see [references ⓘ](#)) were used in the production of this report:

MolProbity : 4.02b-467
Mogul : 1.7 (RC4), CSD as536be (2015)
Xtriage (Phenix) : 1.9-1692
EDS : rb-20026688
Percentile statistics : 20151230.v01 (using entries in the PDB archive December 30th 2015)
Refmac : 5.8.0135
CCP4 : 6.5.0
Ideal geometry (proteins) : Engh & Huber (2001)
Ideal geometry (DNA, RNA) : Parkinson et al. (1996)
Validation Pipeline (wwPDB-VP) : trunk26865

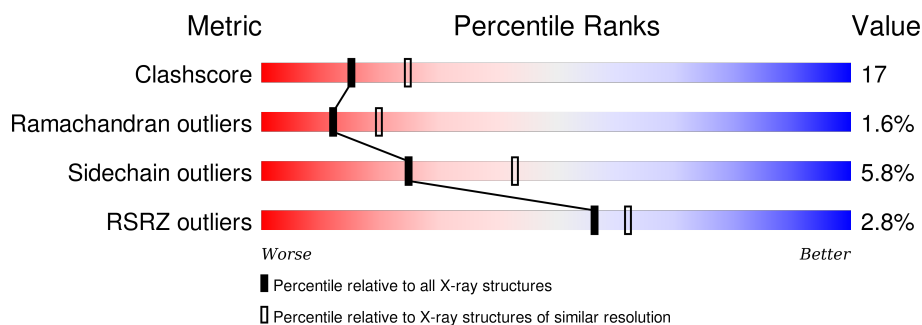
1 Overall quality at a glance

The following experimental techniques were used to determine the structure:

X-RAY DIFFRACTION

The reported resolution of this entry is 2.55 Å.

Percentile scores (ranging between 0-100) for global validation metrics of the entry are shown in the following graphic. The table shows the number of entries on which the scores are based.



Metric	Whole archive (#Entries)	Similar resolution (#Entries, resolution range(Å))
Clashscore	102246	5292 (2.58-2.50)
Ramachandran outliers	100387	5194 (2.58-2.50)
Sidechain outliers	100360	5196 (2.58-2.50)
RSRZ outliers	91569	4561 (2.58-2.50)

The table below summarises the geometric issues observed across the polymeric chains and their fit to the electron density. The red, orange, yellow and green segments on the lower bar indicate the fraction of residues that contain outliers for ≥ 3 , 2, 1 and 0 types of geometric quality criteria. A grey segment represents the fraction of residues that are not modelled. The numeric value for each fraction is indicated below the corresponding segment, with a dot representing fractions $\leq 5\%$. The upper red bar (where present) indicates the fraction of residues that have poor fit to the electron density. The numeric value is given above the bar.

Mol	Chain	Length	Quality of chain
1	A	215	<div> <div>%</div> <div> <div></div> <div>66%</div> <div>31%</div> <div>.</div> </div> </div>
1	B	215	<div> <div>4%</div> <div> <div></div> <div>71%</div> <div>24%</div> <div>.</div> </div> </div>

2 Entry composition [i](#)

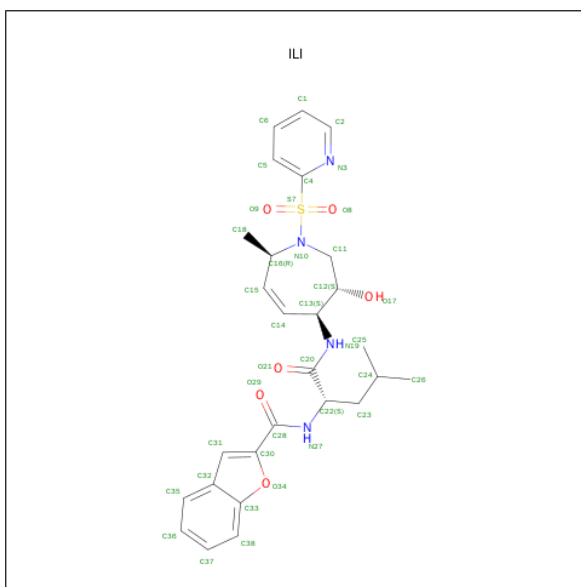
There are 3 unique types of molecules in this entry. The entry contains 3567 atoms, of which 0 are hydrogens and 0 are deuteriums.

In the tables below, the ZeroOcc column contains the number of atoms modelled with zero occupancy, the AltConf column contains the number of residues with at least one atom in alternate conformation and the Trace column contains the number of residues modelled with at most 2 atoms.

- Molecule 1 is a protein called Cathepsin K.

Mol	Chain	Residues	Atoms					ZeroOcc	AltConf	Trace
1	A	215	Total	C	N	O	S	0	0	0
			1649	1030	291	316	12			
1	B	215	Total	C	N	O	S	0	0	0
			1649	1030	291	316	12			

- Molecule 2 is N-[(1S)-1-({[(3S,4S,7R)-3-HYDROXY-7-METHYL-1-(PYRIDIN-2-YLSULFONYL)-2,3,4,7-TETRAHYDRO-1H-AZEPIN-4-YL]AMINO}CARBONYL)-3-METHYLBUTYL]-1-BENZOFURAN-2-CARBOXAMIDE (three-letter code: ILI) (formula: C₂₇H₃₂N₄O₆S).



Mol	Chain	Residues	Atoms					ZeroOcc	AltConf
2	A	1	Total	C	N	O	S	0	0
			38	27	4	6	1		
2	B	1	Total	C	N	O	S	0	0
			38	27	4	6	1		

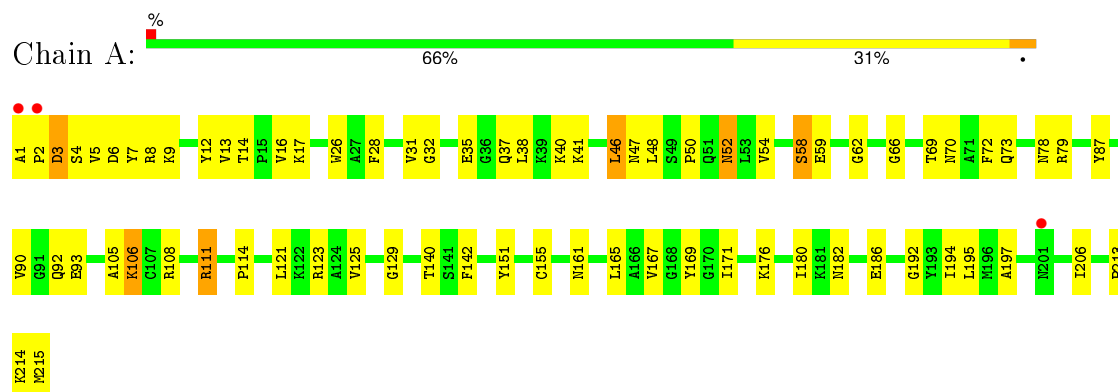
- Molecule 3 is water.

Mol	Chain	Residues	Atoms		ZeroOcc	AltConf
3	A	112	Total 112	O 112	0	0
3	B	81	Total 81	O 81	0	0

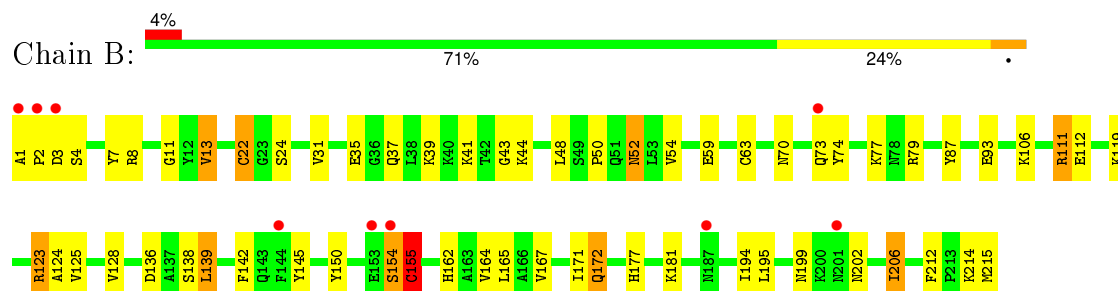
3 Residue-property plots [i](#)

These plots are drawn for all protein, RNA and DNA chains in the entry. The first graphic for a chain summarises the proportions of errors displayed in the second graphic. The second graphic shows the sequence view annotated by issues in geometry and electron density. Residues are color-coded according to the number of geometric quality criteria for which they contain at least one outlier: green = 0, yellow = 1, orange = 2 and red = 3 or more. A red dot above a residue indicates a poor fit to the electron density ($\text{RSRZ} > 2$). Stretches of 2 or more consecutive residues without any outlier are shown as a green connector. Residues present in the sample, but not in the model, are shown in grey.

• Molecule 1: Cathepsin K



• Molecule 1: Cathepsin K



4 Data and refinement statistics

Property	Value	Source
Space group	P 61 2 2	Depositor
Cell constants a, b, c, α , β , γ	74.87Å 74.87Å 339.56Å 90.00° 90.00° 120.00°	Depositor
Resolution (Å)	25.00 – 2.55 19.87 – 2.55	Depositor EDS
% Data completeness (in resolution range)	(Not available) (25.00-2.55) 89.8 (19.87-2.55)	Depositor EDS
R_{merge}	(Not available)	Depositor
R_{sym}	0.06	Depositor
$\langle I/\sigma(I) \rangle$ ¹	9.68 (at 2.56Å)	Xtriage
Refinement program	CNS 1.1	Depositor
R, R_{free}	0.237 , 0.284 0.247 , (Not available)	Depositor DCC
R_{free} test set	No test flags present.	DCC
Wilson B-factor (Å ²)	29.8	Xtriage
Anisotropy	0.416	Xtriage
Bulk solvent k_{sol} (e/Å ³), B_{sol} (Å ²)	0.37 , 47.8	EDS
Estimated twinning fraction	No twinning to report.	Xtriage
L-test for twinning ²	$\langle L \rangle = 0.49$, $\langle L^2 \rangle = 0.32$	Xtriage
Outliers	0 of 17372 reflections	Xtriage
F_o, F_c correlation	0.91	EDS
Total number of atoms	3567	wwPDB-VP
Average B, all atoms (Å ²)	28.0	wwPDB-VP

Xtriage's analysis on translational NCS is as follows: *The largest off-origin peak in the Patterson function is 3.34% of the height of the origin peak. No significant pseudotranslation is detected.*

¹Intensities estimated from amplitudes.

²Theoretical values of $\langle |L| \rangle$, $\langle L^2 \rangle$ for acentric reflections are 0.5, 0.375 respectively for untwinned datasets, and 0.333, 0.2 for perfectly twinned datasets.

5 Model quality

5.1 Standard geometry

Bond lengths and bond angles in the following residue types are not validated in this section: ILI

The Z score for a bond length (or angle) is the number of standard deviations the observed value is removed from the expected value. A bond length (or angle) with $|Z| > 5$ is considered an outlier worth inspection. RMSZ is the root-mean-square of all Z scores of the bond lengths (or angles).

Mol	Chain	Bond lengths		Bond angles	
		RMSZ	# Z >5	RMSZ	# Z >5
1	A	0.40	0/1684	0.58	0/2270
1	B	0.43	0/1684	0.60	0/2270
All	All	0.41	0/3368	0.59	0/4540

There are no bond length outliers.

There are no bond angle outliers.

There are no chirality outliers.

There are no planarity outliers.

5.2 Too-close contacts

In the following table, the Non-H and H(model) columns list the number of non-hydrogen atoms and hydrogen atoms in the chain respectively. The H(added) column lists the number of hydrogen atoms added and optimized by MolProbity. The Clashes column lists the number of clashes within the asymmetric unit, whereas Symm-Clashes lists symmetry related clashes.

Mol	Chain	Non-H	H(model)	H(added)	Clashes	Symm-Clashes
1	A	1649	0	1595	62	0
1	B	1649	0	1595	60	0
2	A	38	0	30	1	0
2	B	38	0	30	1	0
3	A	112	0	0	5	0
3	B	81	0	0	1	0
All	All	3567	0	3250	115	0

The all-atom clashscore is defined as the number of clashes found per 1000 atoms (including hydrogen atoms). The all-atom clashscore for this structure is 17.

All (115) close contacts within the same asymmetric unit are listed below, sorted by their clash

magnitude.

Atom-1	Atom-2	Interatomic distance (Å)	Clash overlap (Å)
1:B:139:LEU:HD21	1:B:155:CYS:H	1.31	0.96
1:A:111:ARG:HH21	1:A:111:ARG:HB2	1.33	0.92
1:A:31:VAL:HG13	1:A:48:LEU:HB2	1.51	0.90
1:B:111:ARG:HG3	1:B:111:ARG:HH21	1.35	0.88
1:B:111:ARG:HG3	1:B:111:ARG:NH2	1.98	0.78
1:B:111:ARG:HH22	1:B:214:LYS:HZ1	1.33	0.76
1:B:139:LEU:HD21	1:B:155:CYS:N	2.03	0.73
1:B:111:ARG:NH2	1:B:214:LYS:NZ	2.39	0.71
1:A:69:THR:O	1:A:73:GLN:HG3	1.90	0.70
1:A:31:VAL:O	1:A:35:GLU:HG3	1.93	0.69
1:B:111:ARG:HH22	1:B:214:LYS:NZ	1.89	0.69
1:A:14:THR:HB	1:A:47:ASN:HD21	1.58	0.69
1:A:58:SER:HB3	1:B:112:GLU:OE2	1.93	0.68
1:A:111:ARG:HH22	1:A:214:LYS:NZ	1.92	0.67
1:A:8:ARG:HG3	1:A:167:VAL:HG11	1.77	0.66
1:B:8:ARG:HG3	1:B:167:VAL:HG11	1.77	0.65
1:A:70:ASN:HD22	1:A:73:GLN:NE2	1.96	0.63
1:B:145:TYR:CE2	1:B:194:ILE:HG13	2.33	0.63
1:B:139:LEU:CD2	1:B:155:CYS:H	2.10	0.62
1:A:16:VAL:HG21	1:A:192:GLY:HA3	1.84	0.59
1:B:11:GLY:O	1:B:39:LYS:HG3	2.01	0.58
1:B:111:ARG:HH21	1:B:111:ARG:CG	2.14	0.57
1:B:73:GLN:C	1:B:77:LYS:HE3	2.26	0.56
1:A:14:THR:HB	1:A:47:ASN:ND2	2.21	0.56
1:A:70:ASN:HA	1:A:73:GLN:HE21	1.71	0.55
1:A:70:ASN:HD22	1:A:73:GLN:HE21	1.52	0.55
1:B:7:TYR:HE2	1:B:125:VAL:O	1.89	0.55
1:A:52:ASN:C	1:A:52:ASN:HD22	2.10	0.54
1:A:5:VAL:HG12	1:A:169:TYR:CE2	2.42	0.54
1:A:73:GLN:OE1	1:B:73:GLN:HG2	2.08	0.54
1:B:48:LEU:O	1:B:50:PRO:HD3	2.08	0.54
1:A:1:ALA:N	1:A:2:PRO:HD3	2.23	0.53
1:B:63:CYS:H	1:B:93:GLU:CG	2.22	0.53
1:B:73:GLN:O	1:B:77:LYS:HE3	2.09	0.53
1:A:70:ASN:HD21	1:B:70:ASN:HD21	1.57	0.52
1:B:177:HIS:CD2	1:B:195:LEU:HG	2.45	0.52
1:B:145:TYR:CZ	1:B:194:ILE:HG13	2.45	0.52
1:B:128:VAL:HG11	1:B:212:PHE:CD2	2.45	0.52
1:B:50:PRO:O	1:B:54:VAL:HG23	2.09	0.52
1:B:154:SER:O	1:B:155:CYS:C	2.47	0.52
1:A:70:ASN:ND2	1:B:59:GLU:OE2	2.42	0.52

Continued on next page...

Continued from previous page...

Atom-1	Atom-2	Interatomic distance (Å)	Clash overlap (Å)
1:B:167:VAL:O	1:B:167:VAL:HG12	2.10	0.51
1:B:172:GLN:HE21	1:B:172:GLN:HA	1.76	0.51
1:A:46:LEU:HD12	1:A:47:ASN:N	2.25	0.51
1:A:54:VAL:HG13	1:A:62:GLY:HA2	1.92	0.51
1:A:17:LYS:NZ	1:A:47:ASN:ND2	2.58	0.51
1:A:90:VAL:HG23	1:A:92:GLN:H	1.75	0.51
1:A:93:GLU:HB3	3:A:316:HOH:O	2.10	0.50
1:A:2:PRO:O	1:A:4:SER:N	2.44	0.50
1:B:171:ILE:HG22	1:B:172:GLN:N	2.26	0.50
1:A:38:LEU:HD13	1:A:105:ALA:HB2	1.94	0.49
1:A:180:ILE:HD11	1:A:206:ILE:HD11	1.93	0.49
1:B:164:VAL:HG22	1:B:181:LYS:O	2.12	0.49
1:B:1:ALA:N	1:B:2:PRO:HD3	2.27	0.49
1:B:167:VAL:CG1	1:B:167:VAL:O	2.61	0.48
1:A:6:ASP:OD2	1:A:9:LYS:HG3	2.14	0.48
1:B:8:ARG:HG2	1:B:13:VAL:HG21	1.94	0.48
1:A:12:TYR:HE2	1:A:40:LYS:HB2	1.79	0.48
1:B:52:ASN:C	1:B:52:ASN:HD22	2.15	0.48
1:A:14:THR:HG21	1:A:47:ASN:HD22	1.78	0.48
1:A:7:TYR:HB3	1:A:12:TYR:HB2	1.96	0.47
1:A:111:ARG:HH21	1:A:111:ARG:CB	2.15	0.47
1:A:72:PHE:CZ	1:A:213:PRO:HD3	2.50	0.47
1:A:17:LYS:HZ1	1:A:47:ASN:HD21	1.63	0.47
1:B:31:VAL:O	1:B:35:GLU:HG3	2.15	0.47
1:A:28:PHE:CE2	1:A:50:PRO:HG3	2.48	0.47
1:A:121:LEU:O	1:A:125:VAL:HG23	2.14	0.47
1:B:136:ASP:OD2	1:B:138:SER:OG	2.26	0.46
1:A:171:ILE:HG12	1:A:176:LYS:HG2	1.97	0.46
1:B:145:TYR:CD2	1:B:194:ILE:HG13	2.51	0.46
1:A:5:VAL:HG22	1:A:6:ASP:N	2.31	0.45
1:B:162:HIS:ND1	2:B:301:ILI:H112	2.30	0.45
1:B:123:ARG:HD3	1:B:124:ALA:N	2.31	0.45
1:A:58:SER:CB	1:B:112:GLU:OE2	2.62	0.45
1:A:182:ASN:HB3	3:A:331:HOH:O	2.16	0.45
1:B:79:ARG:NH2	1:B:106:LYS:NZ	2.65	0.45
1:A:7:TYR:CZ	1:A:129:GLY:HA2	2.52	0.44
1:B:22:CYS:O	1:B:24:SER:N	2.47	0.44
1:A:62:GLY:HA3	1:A:93:GLU:CD	2.38	0.44
1:A:78:ASN:O	1:A:79:ARG:HB2	2.17	0.44
1:B:44:LYS:HD3	3:B:312:HOH:O	2.18	0.43
1:A:1:ALA:H1	1:A:2:PRO:HD3	1.83	0.43

Continued on next page...

Continued from previous page...

Atom-1	Atom-2	Interatomic distance (Å)	Clash overlap (Å)
1:A:26:TRP:CD1	1:A:66:GLY:N	2.86	0.43
1:B:142:PHE:N	1:B:150:TYR:OH	2.51	0.43
1:B:123:ARG:HD3	1:B:123:ARG:C	2.39	0.43
1:A:106:LYS:HE2	1:A:106:LYS:HB3	1.84	0.43
1:A:111:ARG:HD3	3:A:301:HOH:O	2.18	0.43
1:B:139:LEU:HD21	1:B:154:SER:HB2	2.01	0.42
1:B:138:SER:O	1:B:139:LEU:C	2.57	0.42
1:B:37:GLN:O	1:B:41:LYS:HG2	2.19	0.42
1:B:74:TYR:HA	1:B:77:LYS:HG2	2.00	0.42
1:B:39:LYS:O	1:B:43:GLY:N	2.49	0.42
1:A:114:PRO:HD3	3:A:304:HOH:O	2.19	0.42
1:A:111:ARG:HH22	1:A:214:LYS:HZ3	1.63	0.42
1:A:106:LYS:HE3	3:A:381:HOH:O	2.18	0.42
1:B:202:ASN:OD1	1:B:206:ILE:HG22	2.20	0.42
1:B:164:VAL:HG22	1:B:165:LEU:H	1.85	0.41
1:B:73:GLN:O	1:B:77:LYS:HG2	2.19	0.41
1:B:2:PRO:C	1:B:4:SER:H	2.23	0.41
1:A:142:PHE:CE1	1:A:194:ILE:HD13	2.55	0.41
1:A:7:TYR:HE2	1:A:125:VAL:O	2.03	0.41
1:A:161:ASN:O	2:A:300:ILI:H182	2.20	0.41
1:A:151:TYR:HB2	1:A:197:ALA:HB2	2.02	0.41
1:B:119:LYS:HE2	1:B:199:ASN:HD21	1.85	0.41
1:B:119:LYS:HE2	1:B:199:ASN:ND2	2.36	0.41
1:B:31:VAL:HG13	1:B:48:LEU:HB2	2.02	0.41
1:A:73:GLN:NE2	1:B:59:GLU:OE2	2.54	0.41
1:B:106:LYS:O	1:B:215:MET:HG2	2.20	0.41
1:A:32:GLY:HA3	1:A:165:LEU:HD22	2.02	0.41
1:A:17:LYS:HZ1	1:A:47:ASN:ND2	2.18	0.41
1:A:108:ARG:HH11	1:A:215:MET:C	2.24	0.41
1:A:14:THR:CB	1:A:47:ASN:ND2	2.83	0.40
1:A:111:ARG:HH22	1:A:214:LYS:HZ2	1.67	0.40
1:A:59:GLU:OE2	1:B:70:ASN:ND2	2.54	0.40
1:A:37:GLN:O	1:A:41:LYS:HG2	2.21	0.40

There are no symmetry-related clashes.

5.3 Torsion angles [i](#)

5.3.1 Protein backbone [i](#)

In the following table, the Percentiles column shows the percent Ramachandran outliers of the chain as a percentile score with respect to all X-ray entries followed by that with respect to entries of similar resolution.

The Analysed column shows the number of residues for which the backbone conformation was analysed, and the total number of residues.

Mol	Chain	Analysed	Favoured	Allowed	Outliers	Percentiles	
1	A	213/215 (99%)	193 (91%)	19 (9%)	1 (0%)	34	54
1	B	213/215 (99%)	189 (89%)	18 (8%)	6 (3%)	6	8
All	All	426/430 (99%)	382 (90%)	37 (9%)	7 (2%)	12	20

All (7) Ramachandran outliers are listed below:

Mol	Chain	Res	Type
1	B	22	CYS
1	B	139	LEU
1	B	155	CYS
1	A	3	ASP
1	B	154	SER
1	B	3	ASP
1	B	206	ILE

5.3.2 Protein sidechains [i](#)

In the following table, the Percentiles column shows the percent sidechain outliers of the chain as a percentile score with respect to all X-ray entries followed by that with respect to entries of similar resolution.

The Analysed column shows the number of residues for which the sidechain conformation was analysed, and the total number of residues.

Mol	Chain	Analysed	Rotameric	Outliers	Percentiles	
1	A	173/173 (100%)	160 (92%)	13 (8%)	17	30
1	B	173/173 (100%)	166 (96%)	7 (4%)	38	62
All	All	346/346 (100%)	326 (94%)	20 (6%)	25	43

All (20) residues with a non-rotameric sidechain are listed below:

Mol	Chain	Res	Type
1	A	3	ASP
1	A	13	VAL
1	A	46	LEU
1	A	52	ASN
1	A	58	SER
1	A	87	TYR
1	A	106	LYS
1	A	111	ARG
1	A	123	ARG
1	A	140	THR
1	A	155	CYS
1	A	186	GLU
1	A	195	LEU
1	B	13	VAL
1	B	52	ASN
1	B	87	TYR
1	B	111	ARG
1	B	123	ARG
1	B	155	CYS
1	B	172	GLN

Some sidechains can be flipped to improve hydrogen bonding and reduce clashes. All (23) such sidechains are listed below:

Mol	Chain	Res	Type
1	A	47	ASN
1	A	60	ASN
1	A	70	ASN
1	A	73	GLN
1	A	92	GLN
1	A	159	ASN
1	A	175	ASN
1	A	177	HIS
1	A	187	ASN
1	A	201	ASN
1	B	19	GLN
1	B	47	ASN
1	B	60	ASN
1	B	70	ASN
1	B	73	GLN
1	B	76	GLN
1	B	92	GLN
1	B	159	ASN
1	B	172	GLN

Continued on next page...

Continued from previous page...

Mol	Chain	Res	Type
1	B	175	ASN
1	B	177	HIS
1	B	187	ASN
1	B	201	ASN

5.3.3 RNA [i](#)

There are no RNA molecules in this entry.

5.4 Non-standard residues in protein, DNA, RNA chains [i](#)

There are no non-standard protein/DNA/RNA residues in this entry.

5.5 Carbohydrates [i](#)

There are no carbohydrates in this entry.

5.6 Ligand geometry [i](#)

2 ligands are modelled in this entry.

In the following table, the Counts columns list the number of bonds (or angles) for which Mogul statistics could be retrieved, the number of bonds (or angles) that are observed in the model and the number of bonds (or angles) that are defined in the chemical component dictionary. The Link column lists molecule types, if any, to which the group is linked. The Z score for a bond length (or angle) is the number of standard deviations the observed value is removed from the expected value. A bond length (or angle) with $|Z| > 2$ is considered an outlier worth inspection. RMSZ is the root-mean-square of all Z scores of the bond lengths (or angles).

Mol	Type	Chain	Res	Link	Bond lengths			Bond angles		
					Counts	RMSZ	$\# Z > 2$	Counts	RMSZ	$\# Z > 2$
2	ILI	A	300	1	32,41,41	3.05	14 (43%)	36,59,59	1.27	2 (5%)
2	ILI	B	301	1	32,41,41	3.28	17 (53%)	36,59,59	1.22	3 (8%)

In the following table, the Chirals column lists the number of chiral outliers, the number of chiral centers analysed, the number of these observed in the model and the number defined in the chemical component dictionary. Similar counts are reported in the Torsion and Rings columns. '-' means no outliers of that kind were identified.

Mol	Type	Chain	Res	Link	Chirals	Torsions	Rings
2	ILI	A	300	1	-	0/28/49/49	0/2/4/4
2	ILI	B	301	1	-	0/28/49/49	0/2/4/4

All (31) bond length outliers are listed below:

Mol	Chain	Res	Type	Atoms	Z	Observed(Å)	Ideal(Å)
2	B	301	ILI	O17-C12	-4.07	1.34	1.43
2	A	300	ILI	O17-C12	-4.07	1.34	1.43
2	A	300	ILI	C30-C28	-3.30	1.44	1.49
2	B	301	ILI	C30-C28	-2.87	1.45	1.49
2	B	301	ILI	C38-C33	2.03	1.42	1.38
2	B	301	ILI	C37-C36	2.04	1.43	1.38
2	B	301	ILI	C2-N3	2.05	1.39	1.34
2	A	300	ILI	C5-C4	2.09	1.42	1.37
2	B	301	ILI	C20-N19	2.09	1.38	1.34
2	A	300	ILI	C38-C33	2.16	1.42	1.38
2	A	300	ILI	C28-N27	2.22	1.39	1.34
2	B	301	ILI	C4-N3	2.25	1.38	1.33
2	B	301	ILI	O8-S7	2.33	1.46	1.43
2	B	301	ILI	O9-S7	2.33	1.46	1.43
2	B	301	ILI	C36-C35	2.49	1.42	1.36
2	B	301	ILI	C37-C38	2.59	1.42	1.36
2	A	300	ILI	C4-N3	2.68	1.39	1.33
2	A	300	ILI	O8-S7	2.77	1.47	1.43
2	A	300	ILI	C37-C38	2.78	1.43	1.36
2	B	301	ILI	C11-N10	2.87	1.49	1.47
2	A	300	ILI	C36-C35	2.92	1.43	1.36
2	A	300	ILI	O9-S7	2.93	1.47	1.43
2	A	300	ILI	C11-N10	3.00	1.49	1.47
2	B	301	ILI	C28-N27	3.19	1.41	1.34
2	A	300	ILI	S7-N10	3.40	1.68	1.63
2	B	301	ILI	C12-C13	3.48	1.59	1.53
2	B	301	ILI	S7-N10	3.66	1.68	1.63
2	A	300	ILI	C12-C13	3.94	1.60	1.53
2	B	301	ILI	C13-N19	4.05	1.50	1.46
2	A	300	ILI	C14-C15	12.60	1.52	1.32
2	B	301	ILI	C14-C15	13.98	1.54	1.32

All (5) bond angle outliers are listed below:

Mol	Chain	Res	Type	Atoms	Z	Observed(°)	Ideal(°)
2	A	300	ILI	C14-C13-N19	-5.34	101.74	113.05
2	B	301	ILI	C14-C13-N19	-4.26	104.02	113.05

Continued on next page...

Continued from previous page...

Mol	Chain	Res	Type	Atoms	Z	Observed(°)	Ideal(°)
2	B	301	ILI	C20-C22-N27	-2.57	104.01	111.26
2	A	300	ILI	C20-C22-N27	-2.48	104.27	111.26
2	B	301	ILI	O9-S7-C4	-2.32	104.36	107.75

There are no chirality outliers.

There are no torsion outliers.

There are no ring outliers.

2 monomers are involved in 2 short contacts:

Mol	Chain	Res	Type	Clashes	Symm-Clashes
2	A	300	ILI	1	0
2	B	301	ILI	1	0

5.7 Other polymers [i](#)

There are no such residues in this entry.

5.8 Polymer linkage issues [i](#)

There are no chain breaks in this entry.

6 Fit of model and data [i](#)

6.1 Protein, DNA and RNA chains [i](#)

In the following table, the column labelled ‘#RSRZ> 2’ contains the number (and percentage) of RSRZ outliers, followed by percent RSRZ outliers for the chain as percentile scores relative to all X-ray entries and entries of similar resolution. The OWAB column contains the minimum, median, 95th percentile and maximum values of the occupancy-weighted average B-factor per residue. The column labelled ‘Q< 0.9’ lists the number of (and percentage) of residues with an average occupancy less than 0.9.

Mol	Chain	Analysed	<RSRZ>	#RSRZ>2	OWAB(Å ²)	Q<0.9
1	A	215/215 (100%)	0.08	3 (1%) 78 81	12, 23, 42, 71	0
1	B	215/215 (100%)	0.34	9 (4%) 40 46	16, 27, 46, 70	0
All	All	430/430 (100%)	0.21	12 (2%) 56 62	12, 26, 44, 71	0

All (12) RSRZ outliers are listed below:

Mol	Chain	Res	Type	RSRZ
1	B	1	ALA	15.5
1	A	2	PRO	12.3
1	B	2	PRO	11.0
1	A	1	ALA	9.7
1	B	144	PHE	5.4
1	B	153	GLU	3.8
1	B	3	ASP	3.5
1	B	187	ASN	3.2
1	A	201	ASN	2.8
1	B	154	SER	2.8
1	B	201	ASN	2.5
1	B	73	GLN	2.5

6.2 Non-standard residues in protein, DNA, RNA chains [i](#)

There are no non-standard protein/DNA/RNA residues in this entry.

6.3 Carbohydrates [i](#)

There are no carbohydrates in this entry.

6.4 Ligands [i](#)

In the following table, the Atoms column lists the number of modelled atoms in the group and the number defined in the chemical component dictionary. LLDF column lists the quality of electron density of the group with respect to its neighbouring residues in protein, DNA or RNA chains. The B-factors column lists the minimum, median, 95th percentile and maximum values of B factors of atoms in the group. The column labelled 'Q< 0.9' lists the number of atoms with occupancy less than 0.9.

Mol	Type	Chain	Res	Atoms	RSCC	RSR	LLDF	B-factors(\AA^2)	Q<0.9
2	ILI	B	301	38/38	0.94	0.19	1.01	25,35,40,41	0
2	ILI	A	300	38/38	0.95	0.14	0.25	15,23,30,30	0

6.5 Other polymers [i](#)

There are no such residues in this entry.