



# Full wwPDB X-ray Structure Validation Report ⓘ

Oct 6, 2016 – 11:17 AM EDT

PDB ID : 5FV0  
Title : The cytoplasmic domain of EssC  
Authors : Zoltner, M.; Ng, W.M.A.V.; Palmer, T.; Hunter, W.N.  
Deposited on : 2016-02-01  
Resolution : 2.91 Å(reported)

This is a Full wwPDB X-ray Structure Validation Report for a publicly released PDB entry.

We welcome your comments at [validation@mail.wwpdb.org](mailto:validation@mail.wwpdb.org)

A user guide is available at

<http://wwpdb.org/validation/2016/XrayValidationReportHelp>

with specific help available everywhere you see the ⓘ symbol.

---

The following versions of software and data (see [references ⓘ](#)) were used in the production of this report:

MolProbity : 4.02b-467  
Mogul : 1.7.1 (RC1), CSD as537be (2016)  
Xtriage (Phenix) : 1.9-1692  
EDS : rb-20027939  
Percentile statistics : 20151230.v01 (using entries in the PDB archive December 30th 2015)  
Refmac : 5.8.0135  
CCP4 : 6.5.0  
Ideal geometry (proteins) : Engh & Huber (2001)  
Ideal geometry (DNA, RNA) : Parkinson et al. (1996)  
Validation Pipeline (wwPDB-VP) : rb-20027939

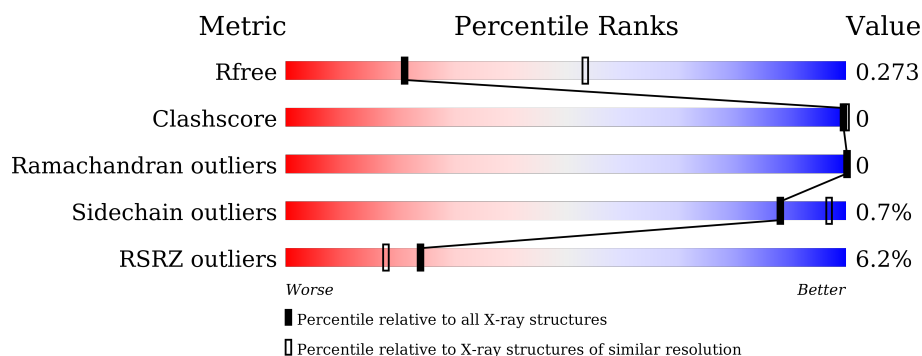
# 1 Overall quality at a glance

The following experimental techniques were used to determine the structure:

*X-RAY DIFFRACTION*

The reported resolution of this entry is 2.91 Å.

Percentile scores (ranging between 0-100) for global validation metrics of the entry are shown in the following graphic. The table shows the number of entries on which the scores are based.



Metric	Whole archive (#Entries)	Similar resolution (#Entries, resolution range(Å))
$R_{free}$	91344	1643 (2.94-2.90)
Clashscore	102246	1871 (2.94-2.90)
Ramachandran outliers	100387	1824 (2.94-2.90)
Sidechain outliers	100360	1826 (2.94-2.90)
RSRZ outliers	91569	1650 (2.94-2.90)

The table below summarises the geometric issues observed across the polymeric chains and their fit to the electron density. The red, orange, yellow and green segments on the lower bar indicate the fraction of residues that contain outliers for  $\geq 3$ , 2, 1 and 0 types of geometric quality criteria. A grey segment represents the fraction of residues that are not modelled. The numeric value for each fraction is indicated below the corresponding segment, with a dot representing fractions  $\leq 5\%$ . The upper red bar (where present) indicates the fraction of residues that have poor fit to the electron density. The numeric value is given above the bar.

Mol	Chain	Length	Quality of chain
1	A	517	<div> <div>4%</div> <div>96%</div> <div>..</div> </div>
1	B	517	<div> <div>7%</div> <div>87%</div> <div>. 11%</div> </div>

The following table lists non-polymeric compounds, carbohydrate monomers and non-standard residues in protein, DNA, RNA chains that are outliers for geometric or electron-density-fit criteria:

Mol	Type	Chain	Res	Chirality	Geometry	Clashes	Electron density
2	ONA	A	2480	X	-	-	-

## 2 Entry composition [i](#)

There are 5 unique types of molecules in this entry. The entry contains 7919 atoms, of which 0 are hydrogens and 0 are deuteriums.

In the tables below, the ZeroOcc column contains the number of atoms modelled with zero occupancy, the AltConf column contains the number of residues with at least one atom in alternate conformation and the Trace column contains the number of residues modelled with at most 2 atoms.

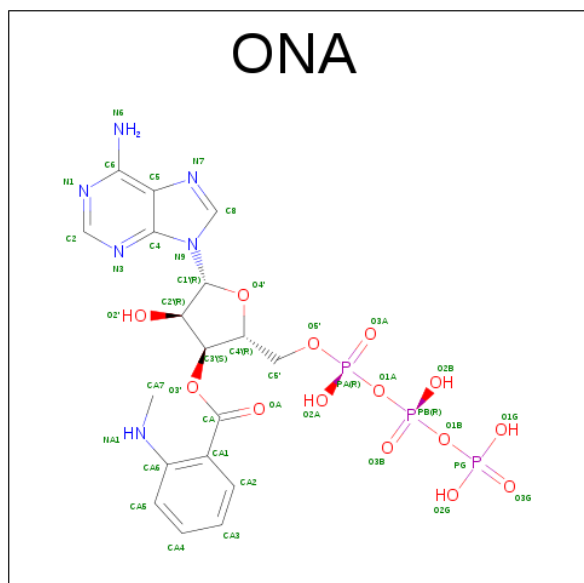
- Molecule 1 is a protein called ESSC.

Mol	Chain	Residues	Atoms					ZeroOcc	AltConf	Trace
1	A	508	Total	C	N	O	S	0	4	0
			4119	2641	696	765	17			
1	B	458	Total	C	N	O	S	0	0	0
			3661	2358	608	680	15			

There are 6 discrepancies between the modelled and reference sequences:

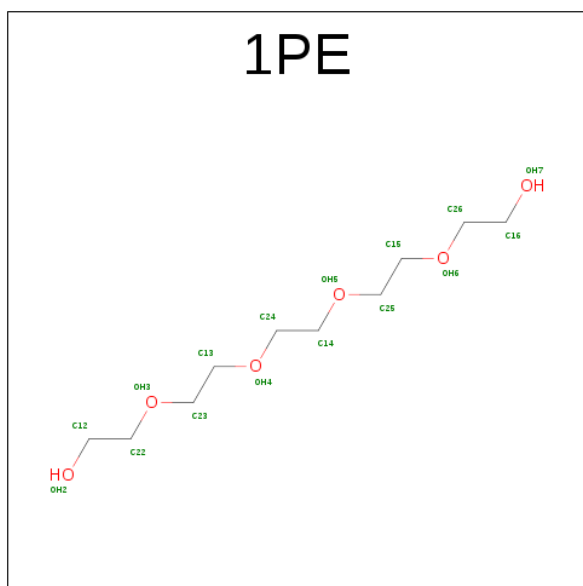
Chain	Residue	Modelled	Actual	Comment	Reference
A	963	GLY	-	EXPRESSION TAG	UNP A4IKE7
A	964	SER	-	EXPRESSION TAG	UNP A4IKE7
A	965	MET	-	EXPRESSION TAG	UNP A4IKE7
B	963	GLY	-	EXPRESSION TAG	UNP A4IKE7
B	964	SER	-	EXPRESSION TAG	UNP A4IKE7
B	965	MET	-	EXPRESSION TAG	UNP A4IKE7

- Molecule 2 is 3'-O-[2-(METHYLAMINO)BENZOYL]ADENOSINE 5'-(TETRAHYDROGEN TRIPHOSPHATE) (three-letter code: ONA) (formula: C<sub>18</sub>H<sub>23</sub>N<sub>6</sub>O<sub>14</sub>P<sub>3</sub>).



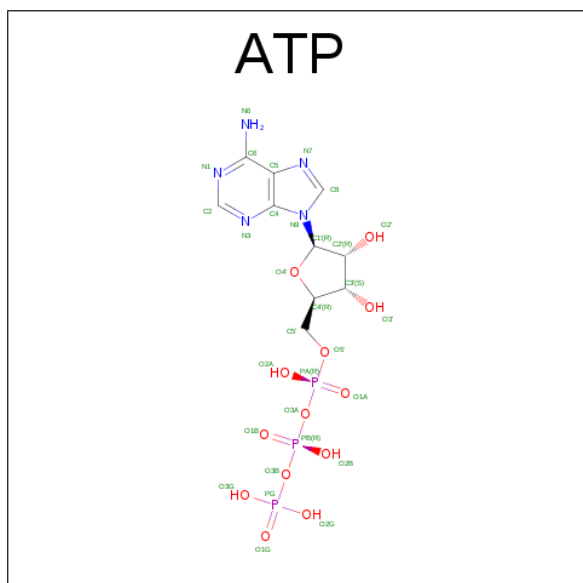
Mol	Chain	Residues	Atoms					ZeroOcc	AltConf
2	A	1	Total	C	N	O	P	0	0
			41	18	6	14	3		

- Molecule 3 is PENTAETHYLENE GLYCOL (three-letter code: 1PE) (formula:  $C_{10}H_{22}O_6$ ).



Mol	Chain	Residues	Atoms			ZeroOcc	AltConf
3	A	1	Total	C	O	0	0
			16	10	6		

- Molecule 4 is ADENOSINE-5'-TRIPHOSPHATE (three-letter code: ATP) (formula:  $C_{10}H_{16}N_5O_{13}P_3$ ).



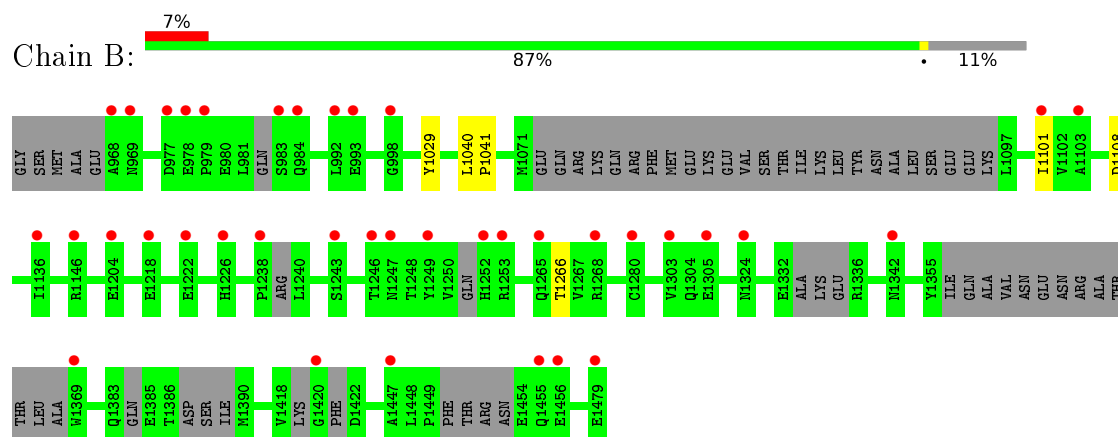
Mol	Chain	Residues	Atoms					ZeroOcc	AltConf
4	B	1	Total	C	N	O	P	0	0
			31	10	5	13	3		

- Molecule 5 is water.

Mol	Chain	Residues	Atoms		ZeroOcc	AltConf
5	A	37	Total	O	0	0
			37	37		
5	B	14	Total	O	0	0
			14	14		



- Molecule 1: ESSC



## 4 Data and refinement statistics

Property	Value	Source
Space group	I 2 2 2	Depositor
Cell constants a, b, c, $\alpha$ , $\beta$ , $\gamma$	85.92Å 152.37Å 207.21Å 90.00° 90.00° 90.00°	Depositor
Resolution (Å)	122.75 – 2.91 29.63 – 2.91	Depositor EDS
% Data completeness (in resolution range)	99.0 (122.75-2.91) 99.1 (29.63-2.91)	Depositor EDS
$R_{merge}$	0.12	Depositor
$R_{sym}$	(Not available)	Depositor
$\langle I/\sigma(I) \rangle$ <sup>1</sup>	1.24 (at 2.90Å)	Xtriage
Refinement program	REFMAC 5.8.0073	Depositor
R, $R_{free}$	0.261 , 0.275 0.257 , 0.273	Depositor DCC
$R_{free}$ test set	1514 reflections (5.32%)	DCC
Wilson B-factor (Å <sup>2</sup> )	63.0	Xtriage
Anisotropy	0.198	Xtriage
Bulk solvent $k_{sol}$ (e/Å <sup>3</sup> ), $B_{sol}$ (Å <sup>2</sup> )	0.31 , 28.9	EDS
L-test for twinning <sup>2</sup>	$\langle  L  \rangle = 0.49$ , $\langle L^2 \rangle = 0.32$	Xtriage
Estimated twinning fraction	No twinning to report.	Xtriage
$F_o, F_c$ correlation	0.90	EDS
Total number of atoms	7919	wwPDB-VP
Average B, all atoms (Å <sup>2</sup> )	70.0	wwPDB-VP

Xtriage's analysis on translational NCS is as follows: *The largest off-origin peak in the Patterson function is 3.83% of the height of the origin peak. No significant pseudotranslation is detected.*

<sup>1</sup>Intensities estimated from amplitudes.

<sup>2</sup>Theoretical values of  $\langle |L| \rangle$ ,  $\langle L^2 \rangle$  for acentric reflections are 0.5, 0.333 respectively for untwinned datasets, and 0.375, 0.2 for perfectly twinned datasets.



## 5 Model quality

### 5.1 Standard geometry

Bond lengths and bond angles in the following residue types are not validated in this section: ONA, ATP, 1PE

The Z score for a bond length (or angle) is the number of standard deviations the observed value is removed from the expected value. A bond length (or angle) with  $|Z| > 5$  is considered an outlier worth inspection. RMSZ is the root-mean-square of all Z scores of the bond lengths (or angles).

Mol	Chain	Bond lengths		Bond angles	
		RMSZ	# Z  >5	RMSZ	# Z  >5
1	A	0.25	0/4205	0.40	0/5680
1	B	0.26	0/3733	0.41	0/5038
All	All	0.25	0/7938	0.40	0/10718

There are no bond length outliers.

There are no bond angle outliers.

There are no chirality outliers.

There are no planarity outliers.

### 5.2 Too-close contacts

In the following table, the Non-H and H(model) columns list the number of non-hydrogen atoms and hydrogen atoms in the chain respectively. The H(added) column lists the number of hydrogen atoms added and optimized by MolProbity. The Clashes column lists the number of clashes within the asymmetric unit, whereas Symm-Clashes lists symmetry related clashes.

Mol	Chain	Non-H	H(model)	H(added)	Clashes	Symm-Clashes
1	A	4119	0	4137	3	0
1	B	3661	0	3661	2	0
2	A	41	0	19	0	0
3	A	16	0	22	0	0
4	B	31	0	12	0	0
5	A	37	0	0	0	0
5	B	14	0	0	0	0
All	All	7919	0	7851	5	0

The all-atom clashscore is defined as the number of clashes found per 1000 atoms (including hydrogen atoms). The all-atom clashscore for this structure is 0.

All (5) close contacts within the same asymmetric unit are listed below, sorted by their clash magnitude.

Atom-1	Atom-2	Interatomic distance (Å)	Clash overlap (Å)
1:B:1040:LEU:N	1:B:1041:PRO:CD	2.80	0.44
1:B:1029:TYR:CE1	1:B:1101:ILE:HD12	2.53	0.43
1:A:1034:PHE:HB3	1:A:1109:VAL:HG11	2.01	0.43
1:A:1040:LEU:N	1:A:1041:PRO:CD	2.82	0.43
1:A:1147:PRO:N	1:A:1148:PRO:HD2	2.37	0.40

There are no symmetry-related clashes.

## 5.3 Torsion angles [i](#)

### 5.3.1 Protein backbone [i](#)

In the following table, the Percentiles column shows the percent Ramachandran outliers of the chain as a percentile score with respect to all X-ray entries followed by that with respect to entries of similar resolution.

The Analysed column shows the number of residues for which the backbone conformation was analysed, and the total number of residues.

Mol	Chain	Analysed	Favoured	Allowed	Outliers	Percentiles	
1	A	508/517 (98%)	488 (96%)	20 (4%)	0	100	100
1	B	435/517 (84%)	414 (95%)	21 (5%)	0	100	100
All	All	943/1034 (91%)	902 (96%)	41 (4%)	0	100	100

There are no Ramachandran outliers to report.

### 5.3.2 Protein sidechains [i](#)

In the following table, the Percentiles column shows the percent sidechain outliers of the chain as a percentile score with respect to all X-ray entries followed by that with respect to entries of similar resolution.

The Analysed column shows the number of residues for which the sidechain conformation was analysed, and the total number of residues.

Mol	Chain	Analysed	Rotameric	Outliers	Percentiles	
1	A	448/451 (99%)	444 (99%)	4 (1%)	84	96

*Continued on next page...*

*Continued from previous page...*

Mol	Chain	Analysed	Rotameric	Outliers	Percentiles	
1	B	399/451 (88%)	397 (100%)	2 (0%)	92	98
All	All	847/902 (94%)	841 (99%)	6 (1%)	88	97

All (6) residues with a non-rotameric sidechain are listed below:

Mol	Chain	Res	Type
1	A	1173	ARG
1	A	1177	ASP
1	A	1315	ILE
1	A	1419	LYS
1	B	1108	ASP
1	B	1266	THR

Some sidechains can be flipped to improve hydrogen bonding and reduce clashes. All (8) such sidechains are listed below:

Mol	Chain	Res	Type
1	A	1044	GLN
1	A	1151	ASN
1	A	1400	GLN
1	A	1407	HIS
1	B	969	ASN
1	B	1151	ASN
1	B	1152	ASN
1	B	1273	ASN

### 5.3.3 RNA ⓘ

There are no RNA molecules in this entry.

## 5.4 Non-standard residues in protein, DNA, RNA chains ⓘ

There are no non-standard protein/DNA/RNA residues in this entry.

## 5.5 Carbohydrates ⓘ

There are no carbohydrates in this entry.

## 5.6 Ligand geometry

3 ligands are modelled in this entry.

In the following table, the Counts columns list the number of bonds (or angles) for which Mogul statistics could be retrieved, the number of bonds (or angles) that are observed in the model and the number of bonds (or angles) that are defined in the chemical component dictionary. The Link column lists molecule types, if any, to which the group is linked. The Z score for a bond length (or angle) is the number of standard deviations the observed value is removed from the expected value. A bond length (or angle) with  $|Z| > 2$  is considered an outlier worth inspection. RMSZ is the root-mean-square of all Z scores of the bond lengths (or angles).

Mol	Type	Chain	Res	Link	Bond lengths			Bond angles		
					Counts	RMSZ	$\# Z  > 2$	Counts	RMSZ	$\# Z  > 2$
2	ONA	A	2480	-	37,44,44	1.56	3 (8%)	42,67,67	1.87	5 (11%)
3	1PE	A	2481	-	15,15,15	0.49	0	14,14,14	0.21	0
4	ATP	B	2480	-	26,33,33	1.00	1 (3%)	26,52,52	1.83	1 (3%)

In the following table, the Chirals column lists the number of chiral outliers, the number of chiral centers analysed, the number of these observed in the model and the number defined in the chemical component dictionary. Similar counts are reported in the Torsion and Rings columns. '-' means no outliers of that kind were identified.

Mol	Type	Chain	Res	Link	Chirals	Torsions	Rings
2	ONA	A	2480	-	4/4/8/9	2/28/48/48	0/4/4/4
3	1PE	A	2481	-	-	0/13/13/13	0/0/0/0
4	ATP	B	2480	-	-	0/18/38/38	0/3/3/3

All (4) bond length outliers are listed below:

Mol	Chain	Res	Type	Atoms	Z	Observed(Å)	Ideal(Å)
2	A	2480	ONA	C5-C4	3.11	1.47	1.40
4	B	2480	ATP	C5-C4	3.12	1.47	1.40
2	A	2480	ONA	O3'-CA	5.61	1.46	1.34
2	A	2480	ONA	CA1-CA6	5.67	1.50	1.41

All (6) bond angle outliers are listed below:

Mol	Chain	Res	Type	Atoms	Z	Observed(°)	Ideal(°)
4	B	2480	ATP	N3-C2-N1	-7.58	122.91	128.87
2	A	2480	ONA	N3-C2-N1	-7.54	122.95	128.87
2	A	2480	ONA	O3'-CA-OA	-3.07	118.35	123.54
2	A	2480	ONA	O4'-C1'-N9	2.44	112.72	108.11
2	A	2480	ONA	O3'-C3'-C4'	2.49	115.90	109.60

*Continued on next page...*

*Continued from previous page...*

Mol	Chain	Res	Type	Atoms	Z	Observed(°)	Ideal(°)
2	A	2480	ONA	O3'-CA-CA1	5.95	121.52	111.78

All (4) chirality outliers are listed below:

Mol	Chain	Res	Type	Atom
2	A	2480	ONA	C4'
2	A	2480	ONA	C2'
2	A	2480	ONA	C3'
2	A	2480	ONA	C1'

All (2) torsion outliers are listed below:

Mol	Chain	Res	Type	Atoms
2	A	2480	ONA	C3'-O3'-CA-CA1
2	A	2480	ONA	CA-O3'-C3'-C4'

There are no ring outliers.

No monomer is involved in short contacts.

## 5.7 Other polymers [i](#)

There are no such residues in this entry.

## 5.8 Polymer linkage issues [i](#)

There are no chain breaks in this entry.

## 6 Fit of model and data

### 6.1 Protein, DNA and RNA chains

In the following table, the column labelled ‘#RSRZ> 2’ contains the number (and percentage) of RSRZ outliers, followed by percent RSRZ outliers for the chain as percentile scores relative to all X-ray entries and entries of similar resolution. The OWAB column contains the minimum, median, 95<sup>th</sup> percentile and maximum values of the occupancy-weighted average B-factor per residue. The column labelled ‘Q< 0.9’ lists the number of (and percentage) of residues with an average occupancy less than 0.9.

Mol	Chain	Analysed	<RSRZ>	#RSRZ>2		OWAB(Å <sup>2</sup> )	Q<0.9
1	A	508/517 (98%)	0.37	22 (4%)	39 33	42, 63, 86, 100	0
1	B	458/517 (88%)	0.61	38 (8%)	14 9	49, 78, 100, 109	0
All	All	966/1034 (93%)	0.49	60 (6%)	24 18	42, 69, 96, 109	0

All (60) RSRZ outliers are listed below:

Mol	Chain	Res	Type	RSRZ
1	A	983	SER	5.4
1	A	1252	HIS	5.0
1	B	968	ALA	4.5
1	A	984	GLN	4.4
1	B	1479	GLU	4.1
1	B	1252	HIS	4.1
1	B	984	GLN	4.0
1	B	1247	ASN	3.9
1	B	1447	ALA	3.7
1	B	1136	ILE	3.7
1	B	983	SER	3.4
1	A	968	ALA	3.4
1	A	1239	ARG	3.4
1	B	1369	TRP	3.4
1	B	977	ASP	3.3
1	A	978	GLU	3.3
1	A	1479	GLU	3.3
1	B	1253	ARG	3.2
1	B	1456	GLU	3.1
1	A	1190	ASP	3.0
1	B	979	PRO	2.9
1	B	1324	ASN	2.8
1	B	978	GLU	2.8
1	A	1079	MET	2.8

*Continued on next page...*

*Continued from previous page...*

Mol	Chain	Res	Type	RSRZ
1	A	1467	GLY	2.7
1	A	1275	ARG	2.6
1	A	1255	SER	2.6
1	A	1238	PRO	2.6
1	A	1226	HIS	2.6
1	B	1243	SER	2.5
1	B	1455	GLN	2.5
1	B	1204	GLU	2.5
1	B	1222	GLU	2.5
1	B	1146	ARG	2.5
1	A	1162	ILE	2.4
1	B	1265	GLN	2.4
1	A	1225	GLN	2.3
1	B	1303	VAL	2.3
1	B	1249	TYR	2.3
1	B	992	LEU	2.3
1	A	1324	ASN	2.2
1	B	1103	ALA	2.2
1	B	1218	GLU	2.2
1	B	1305	GLU	2.2
1	A	1076	GLN	2.2
1	B	1342	ASN	2.2
1	B	1280	CYS	2.2
1	B	1246	THR	2.2
1	A	1360	ASN	2.2
1	A	1080	GLU	2.2
1	B	1268	ARG	2.1
1	B	969	ASN	2.1
1	B	998	GLY	2.1
1	A	1084	SER	2.1
1	B	1101	ILE	2.1
1	B	1238	PRO	2.1
1	B	1420	GLY	2.1
1	B	1226	HIS	2.0
1	B	993	GLU	2.0
1	A	1134	PHE	2.0

## 6.2 Non-standard residues in protein, DNA, RNA chains ⓘ

There are no non-standard protein/DNA/RNA residues in this entry.

### 6.3 Carbohydrates [i](#)

There are no carbohydrates in this entry.

### 6.4 Ligands [i](#)

In the following table, the Atoms column lists the number of modelled atoms in the group and the number defined in the chemical component dictionary. LLDF column lists the quality of electron density of the group with respect to its neighbouring residues in protein, DNA or RNA chains. The B-factors column lists the minimum, median, 95<sup>th</sup> percentile and maximum values of B factors of atoms in the group. The column labelled 'Q< 0.9' lists the number of atoms with occupancy less than 0.9.

Mol	Type	Chain	Res	Atoms	RSCC	RSR	LLDF	B-factors( $\text{\AA}^2$ )	Q<0.9
3	1PE	A	2481	16/16	0.82	0.32	1.85	72,73,75,75	0
2	ONA	A	2480	41/41	0.84	0.27	1.58	55,59,62,62	0
4	ATP	B	2480	31/31	0.91	0.19	-0.57	44,46,52,53	0

### 6.5 Other polymers [i](#)

There are no such residues in this entry.