



Full wwPDB X-ray Structure Validation Report ⓘ

Jul 21, 2016 – 06:27 PM EDT

PDB ID : 5G0N
Title : Structure of rat neuronal nitric oxide synthase D597N mutant heme domain
in complex with N1-(5-(2-(6-AMINO-4-METHYLPYRIDIN-2-YL)ETHYL)
PYRIDIN-3-YL)-N1,N2-DIMETHYLETHANE-1,2-DIAMINE
Authors : Li, H.; Poulos, T.L.
Deposited on : 2016-03-21
Resolution : 1.94 Å(reported)

This is a Full wwPDB X-ray Structure Validation Report for a publicly released PDB entry.
We welcome your comments at validation@mail.wwpdb.org
A user guide is available at
<http://wwpdb.org/validation/2016/XrayValidationReportHelp>
with specific help available everywhere you see the ⓘ symbol.

The following versions of software and data (see [references ⓘ](#)) were used in the production of this report:

MolProbity : 4.02b-467
Mogul : 1.7.1 (RC1), CSD as537be (2016)
Xtriage (Phenix) : 1.9-1692
EDS : rb-20027790
Percentile statistics : 20151230.v01 (using entries in the PDB archive December 30th 2015)
Refmac : 5.8.0135
CCP4 : 6.5.0
Ideal geometry (proteins) : Engh & Huber (2001)
Ideal geometry (DNA, RNA) : Parkinson et al. (1996)
Validation Pipeline (wwPDB-VP) : rb-20027790

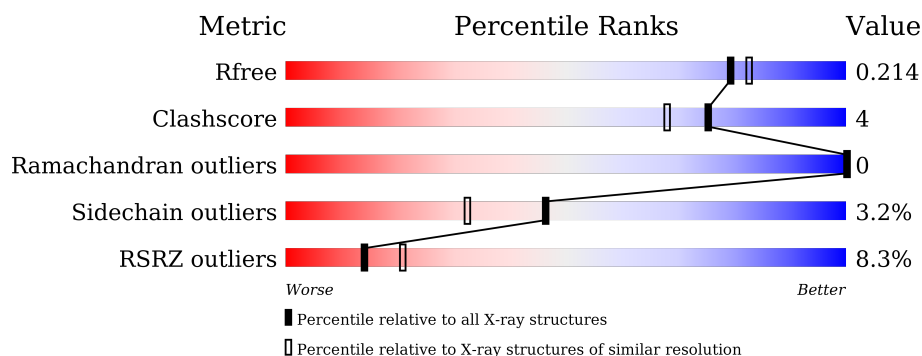
1 Overall quality at a glance ⓘ

The following experimental techniques were used to determine the structure:

X-RAY DIFFRACTION

The reported resolution of this entry is 1.94 Å.

Percentile scores (ranging between 0-100) for global validation metrics of the entry are shown in the following graphic. The table shows the number of entries on which the scores are based.



Metric	Whole archive (#Entries)	Similar resolution (#Entries, resolution range(Å))
R_{free}	91344	2910 (1.96-1.92)
Clashscore	102246	3095 (1.96-1.92)
Ramachandran outliers	100387	3062 (1.96-1.92)
Sidechain outliers	100360	3062 (1.96-1.92)
RSRZ outliers	91569	2915 (1.96-1.92)

The table below summarises the geometric issues observed across the polymeric chains and their fit to the electron density. The red, orange, yellow and green segments on the lower bar indicate the fraction of residues that contain outliers for ≥ 3 , 2, 1 and 0 types of geometric quality criteria. A grey segment represents the fraction of residues that are not modelled. The numeric value for each fraction is indicated below the corresponding segment, with a dot representing fractions $\leq 5\%$. The upper red bar (where present) indicates the fraction of residues that have poor fit to the electron density. The numeric value is given above the bar.

Mol	Chain	Length	Quality of chain
1	A	422	<div> <div>10%</div> <div> <div></div> <div>84%</div> <div>12%</div> <div>..</div> </div> </div>
1	B	422	<div> <div>6%</div> <div> <div></div> <div>88%</div> <div>9%</div> <div>.</div> </div> </div>

The following table lists non-polymeric compounds, carbohydrate monomers and non-standard residues in protein, DNA, RNA chains that are outliers for geometric or electron-density-fit criteria:

Mol	Type	Chain	Res	Chirality	Geometry	Clashes	Electron density
4	EXI	A	800	-	-	-	X
4	EXI	B	800	-	-	-	X
5	ACT	A	860	-	-	-	X

2 Entry composition [i](#)

There are 7 unique types of molecules in this entry. The entry contains 7354 atoms, of which 0 are hydrogens and 0 are deuteriums.

In the tables below, the ZeroOcc column contains the number of atoms modelled with zero occupancy, the AltConf column contains the number of residues with at least one atom in alternate conformation and the Trace column contains the number of residues modelled with at most 2 atoms.

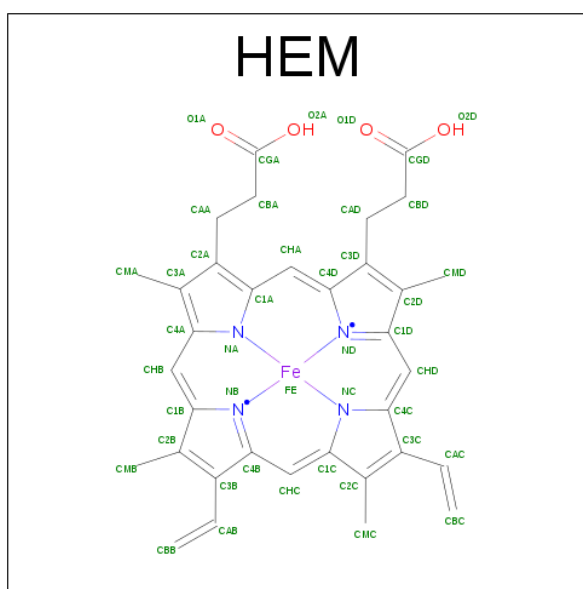
- Molecule 1 is a protein called NITRIC OXIDE SYNTHASE, BRAIN.

Mol	Chain	Residues	Atoms					ZeroOcc	AltConf	Trace
1	A	408	Total	C	N	O	S	0	3	1
			3323	2127	568	606	22			
1	B	411	Total	C	N	O	S	0	4	0
			3360	2150	575	613	22			

There are 2 discrepancies between the modelled and reference sequences:

Chain	Residue	Modelled	Actual	Comment	Reference
A	597	ASN	ASP	ENGINEERED MUTATION	UNP P29476
B	597	ASN	ASP	ENGINEERED MUTATION	UNP P29476

- Molecule 2 is PROTOPORPHYRIN IX CONTAINING FE (three-letter code: HEM) (formula: $C_{34}H_{32}FeN_4O_4$).



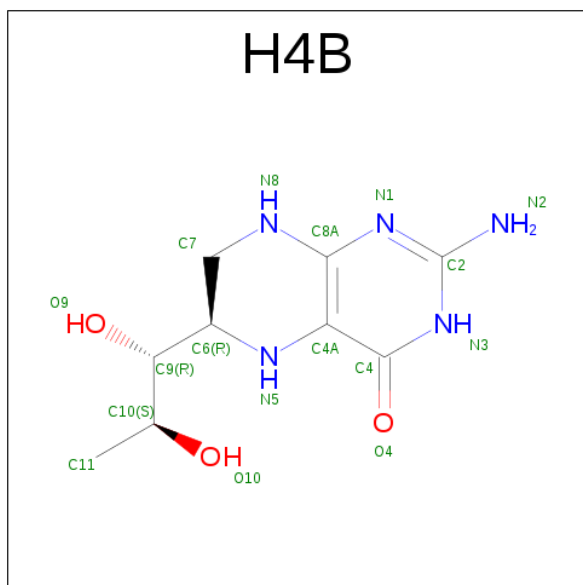
Mol	Chain	Residues	Atoms					ZeroOcc	AltConf
2	A	1	Total	C	Fe	N	O	0	0
			43	34	1	4	4		

Continued on next page...

Continued from previous page...

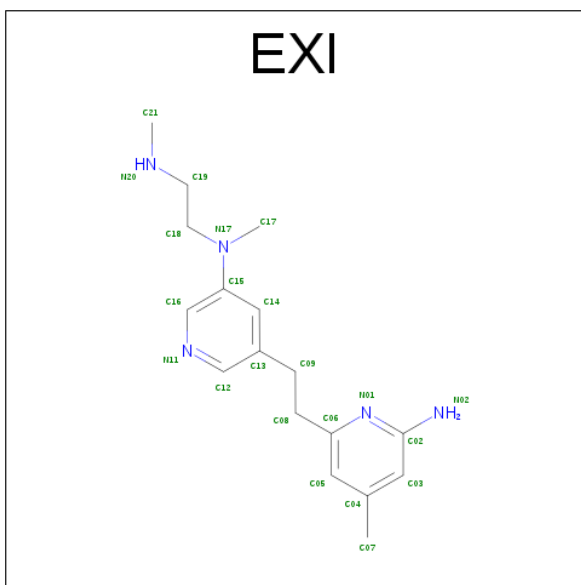
Mol	Chain	Residues	Atoms					ZeroOcc	AltConf
2	B	1	Total	C	Fe	N	O	0	0
			43	34	1	4	4		

- Molecule 3 is 5,6,7,8-TETRAHYDROBIOPTERIN (three-letter code: H4B) (formula: $C_9H_{15}N_5O_3$).



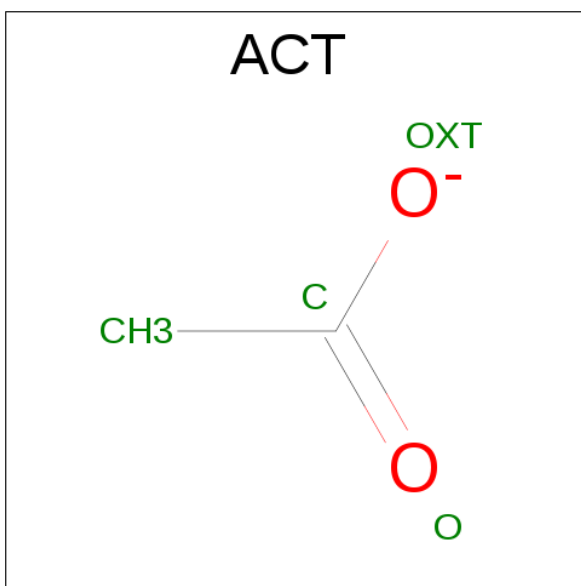
Mol	Chain	Residues	Atoms				ZeroOcc	AltConf
3	A	1	Total	C	N	O	0	0
			17	9	5	3		
3	B	1	Total	C	N	O	0	0
			17	9	5	3		

- Molecule 4 is N1-(5-(2-(6-AMINO-4-METHYLPYRIDIN-2-YL)ETHYL)PYRIDIN-3-YL)-N1,N2-DIMETHYLETHANE-1,2-DIAMINE (three-letter code: EXI) (formula: $C_{17}H_{25}N_5$).



Mol	Chain	Residues	Atoms			ZeroOcc	AltConf
4	A	1	Total	C	N	0	0
			22	17	5		
4	B	1	Total	C	N	0	0
			22	17	5		

- Molecule 5 is ACETATE ION (three-letter code: ACT) (formula: $C_2H_3O_2$).



Mol	Chain	Residues	Atoms			ZeroOcc	AltConf
5	A	1	Total	C	O	0	0
			4	2	2		
5	B	1	Total	C	O	0	0
			4	2	2		

- Molecule 6 is ZINC ION (three-letter code: ZN) (formula: Zn).

Mol	Chain	Residues	Atoms		ZeroOcc	AltConf
6	A	1	Total 1	Zn 1	0	0

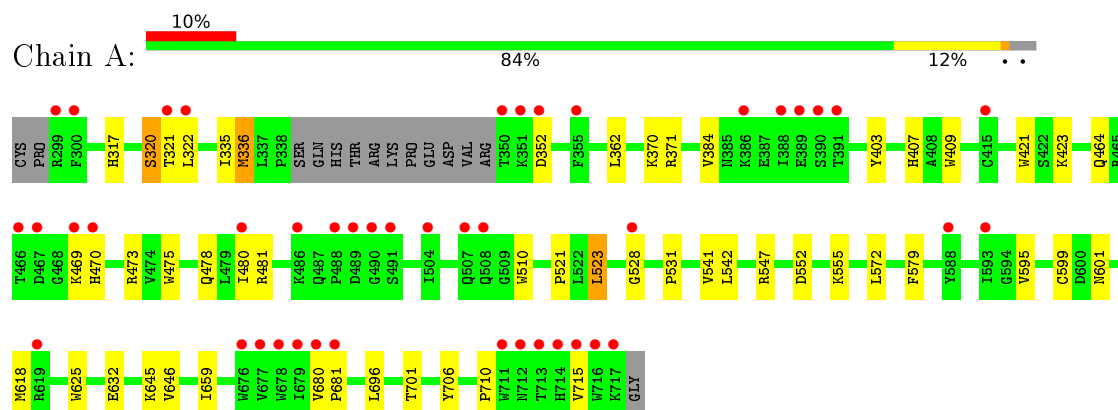
- Molecule 7 is water.

Mol	Chain	Residues	Atoms		ZeroOcc	AltConf
7	A	225	Total 225	O 225	0	0
7	B	273	Total 273	O 273	0	0

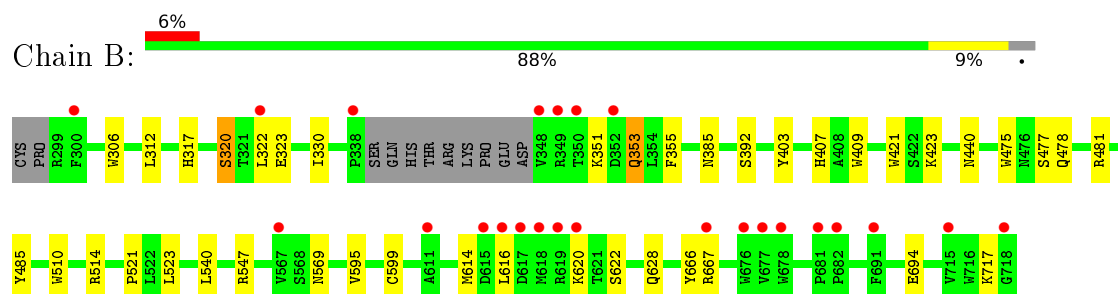
3 Residue-property plots

These plots are drawn for all protein, RNA and DNA chains in the entry. The first graphic for a chain summarises the proportions of errors displayed in the second graphic. The second graphic shows the sequence view annotated by issues in geometry and electron density. Residues are color-coded according to the number of geometric quality criteria for which they contain at least one outlier: green = 0, yellow = 1, orange = 2 and red = 3 or more. A red dot above a residue indicates a poor fit to the electron density ($RSRZ > 2$). Stretches of 2 or more consecutive residues without any outlier are shown as a green connector. Residues present in the sample, but not in the model, are shown in grey.

• Molecule 1: NITRIC OXIDE SYNTHASE, BRAIN



• Molecule 1: NITRIC OXIDE SYNTHASE, BRAIN



4 Data and refinement statistics

Property	Value	Source
Space group	P 21 21 21	Depositor
Cell constants a, b, c, α , β , γ	51.78Å 110.20Å 164.17Å 90.00° 90.00° 90.00°	Depositor
Resolution (Å)	38.83 – 1.94 38.83 – 1.94	Depositor EDS
% Data completeness (in resolution range)	99.2 (38.83-1.94) 99.5 (38.83-1.94)	Depositor EDS
R_{merge}	0.11	Depositor
R_{sym}	(Not available)	Depositor
$\langle I/\sigma(I) \rangle$ ¹	1.43 (at 1.94Å)	Xtriage
Refinement program	PHENIX (PHENIX.REFINE)	Depositor
R, R_{free}	0.175 , 0.216 0.171 , 0.214	Depositor DCC
R_{free} test set	3489 reflections (4.95%)	DCC
Wilson B-factor (Å ²)	29.4	Xtriage
Anisotropy	0.551	Xtriage
Bulk solvent k_{sol} (e/Å ³), B_{sol} (Å ²)	0.37 , 52.4	EDS
L-test for twinning ²	$\langle L \rangle = 0.48$, $\langle L^2 \rangle = 0.32$	Xtriage
Estimated twinning fraction	No twinning to report.	Xtriage
F_o, F_c correlation	0.97	EDS
Total number of atoms	7354	wwPDB-VP
Average B, all atoms (Å ²)	40.0	wwPDB-VP

Xtriage's analysis on translational NCS is as follows: *The largest off-origin peak in the Patterson function is 5.68% of the height of the origin peak. No significant pseudotranslation is detected.*

¹Intensities estimated from amplitudes.

²Theoretical values of $\langle |L| \rangle$, $\langle L^2 \rangle$ for acentric reflections are 0.5, 0.333 respectively for untwinned datasets, and 0.375, 0.2 for perfectly twinned datasets.

5 Model quality ⓘ

5.1 Standard geometry ⓘ

Bond lengths and bond angles in the following residue types are not validated in this section: HEM, ZN, ACT, H4B, EXI

The Z score for a bond length (or angle) is the number of standard deviations the observed value is removed from the expected value. A bond length (or angle) with $|Z| > 5$ is considered an outlier worth inspection. RMSZ is the root-mean-square of all Z scores of the bond lengths (or angles).

Mol	Chain	Bond lengths		Bond angles	
		RMSZ	# Z >5	RMSZ	# Z >5
1	A	0.38	0/3422	0.52	0/4643
1	B	0.38	0/3465	0.51	0/4697
All	All	0.38	0/6887	0.51	0/9340

There are no bond length outliers.

There are no bond angle outliers.

There are no chirality outliers.

There are no planarity outliers.

5.2 Too-close contacts ⓘ

In the following table, the Non-H and H(model) columns list the number of non-hydrogen atoms and hydrogen atoms in the chain respectively. The H(added) column lists the number of hydrogen atoms added and optimized by MolProbity. The Clashes column lists the number of clashes within the asymmetric unit, whereas Symm-Clashes lists symmetry related clashes.

Mol	Chain	Non-H	H(model)	H(added)	Clashes	Symm-Clashes
1	A	3323	0	3234	29	0
1	B	3360	0	3282	21	0
2	A	43	0	30	4	0
2	B	43	0	30	2	0
3	A	17	0	15	0	0
3	B	17	0	15	0	0
4	A	22	0	25	1	0
4	B	22	0	25	3	0
5	A	4	0	3	0	0
5	B	4	0	3	0	0
6	A	1	0	0	0	0

Continued on next page...

Continued from previous page...

Mol	Chain	Non-H	H(model)	H(added)	Clashes	Symm-Clashes
7	A	225	0	0	1	0
7	B	273	0	0	3	0
All	All	7354	0	6662	52	0

The all-atom clashscore is defined as the number of clashes found per 1000 atoms (including hydrogen atoms). The all-atom clashscore for this structure is 4.

All (52) close contacts within the same asymmetric unit are listed below, sorted by their clash magnitude.

Atom-1	Atom-2	Interatomic distance (Å)	Clash overlap (Å)
1:A:523:LEU:HD22	1:A:531:PRO:HB2	1.68	0.74
2:B:750:HEM:HHC	2:B:750:HEM:HBB2	1.72	0.70
1:B:478:GLN:HB2	1:B:481:ARG:HG3	1.75	0.68
2:A:750:HEM:HMC2	2:A:750:HEM:HBC2	1.75	0.67
2:A:750:HEM:HBB2	2:A:750:HEM:HHC	1.81	0.63
1:A:480:ILE:HD13	1:A:541:VAL:HG13	1.83	0.61
1:A:475:TRP:HB2	1:A:523:LEU:HB3	1.82	0.60
1:A:478:GLN:HB2	1:A:481:ARG:HG3	1.83	0.60
1:B:614:MET:HE2	1:B:616:LEU:HD21	1.89	0.54
1:A:317:HIS:O	1:A:320:SER:HB3	2.08	0.53
1:A:542:LEU:HD21	1:A:646:VAL:HG22	1.91	0.53
1:A:470:HIS:HA	1:A:528:GLY:HA3	1.92	0.52
1:B:355:PHE:CE1	1:B:385:ASN:HB2	2.46	0.50
1:A:552:ASP:OD1	1:A:555:LYS:NZ	2.45	0.50
2:A:750:HEM:C1C	4:A:800:EXI:H07B	2.47	0.49
1:B:317:HIS:O	1:B:320:SER:HB3	2.13	0.49
2:B:750:HEM:C1C	4:B:800:EXI:H07B	2.48	0.48
4:B:800:EXI:H21A	7:B:2218:HOH:O	2.13	0.48
4:B:800:EXI:H12	4:B:800:EXI:H08	1.56	0.47
1:A:706:TYR:OH	2:A:750:HEM:O2D	2.25	0.47
1:B:595:VAL:O	1:B:599:CYS:HB2	2.15	0.47
1:A:336:MET:HE3	1:B:306:TRP:CD2	2.50	0.46
1:B:620:LYS:HA	1:B:620:LYS:HD3	1.80	0.46
1:B:510:TRP:CE2	1:B:521:PRO:HD3	2.51	0.45
1:B:403:TYR:CE1	1:B:407:HIS:CE1	3.04	0.45
1:A:336:MET:HB2	1:A:336:MET:HE2	1.92	0.45
1:A:336:MET:HE3	1:B:306:TRP:CE2	2.51	0.45
1:A:362:LEU:HD11	1:A:384:VAL:HG21	1.99	0.45
1:A:475:TRP:CZ2	1:A:531:PRO:HG3	2.52	0.44
1:B:312:LEU:HB3	1:B:666:TYR:CD2	2.53	0.43
1:A:572:LEU:HB3	1:A:579:PHE:HB2	2.01	0.43

Continued on next page...

Continued from previous page...

Atom-1	Atom-2	Interatomic distance (Å)	Clash overlap (Å)
1:A:335:ILE:HD13	1:B:694:GLU:HB3	2.01	0.43
1:A:403:TYR:CE1	1:A:407:HIS:CE1	3.06	0.43
1:A:510:TRP:CE2	1:A:521:PRO:HD3	2.53	0.43
1:B:475:TRP:HB2	1:B:523:LEU:HB3	2.01	0.42
1:B:667:ARG:NH2	7:B:2246:HOH:O	2.53	0.42
1:B:440:ASN:ND2	7:B:2099:HOH:O	2.49	0.42
1:A:696:LEU:HB3	1:B:330:ILE:HD11	2.02	0.41
1:A:464:GLN:HB3	1:A:579:PHE:CE1	2.55	0.41
1:B:477:SER:HA	1:B:569:ASN:HB3	2.02	0.41
1:A:595:VAL:O	1:A:599:CYS:HB2	2.20	0.41
1:B:409:TRP:CE3	1:B:421:TRP:HA	2.55	0.41
1:B:353:GLN:HG2	1:B:353:GLN:H	1.59	0.41
1:A:409:TRP:CE3	1:A:421:TRP:HA	2.55	0.41
1:B:485:TYR:CE2	1:B:514:ARG:HA	2.55	0.41
1:A:680:VAL:HA	1:A:681:PRO:HD3	1.90	0.41
1:A:618:MET:HA	1:A:625:TRP:CD1	2.54	0.41
1:A:321:THR:HG23	1:A:322:LEU:HG	2.02	0.40
1:A:473:ARG:NH2	1:A:710:PRO:HD3	2.36	0.40
1:A:659:ILE:HA	1:A:659:ILE:HD13	1.88	0.40
1:A:632:GLU:OE2	1:B:628:GLN:NE2	2.51	0.40
1:A:701:THR:HG23	7:A:2024:HOH:O	2.20	0.40

There are no symmetry-related clashes.

5.3 Torsion angles ⓘ

5.3.1 Protein backbone ⓘ

In the following table, the Percentiles column shows the percent Ramachandran outliers of the chain as a percentile score with respect to all X-ray entries followed by that with respect to entries of similar resolution.

The Analysed column shows the number of residues for which the backbone conformation was analysed, and the total number of residues.

Mol	Chain	Analysed	Favoured	Allowed	Outliers	Percentiles	
1	A	406/422 (96%)	392 (97%)	14 (3%)	0	100	100
1	B	411/422 (97%)	404 (98%)	7 (2%)	0	100	100
All	All	817/844 (97%)	796 (97%)	21 (3%)	0	100	100

There are no Ramachandran outliers to report.

5.3.2 Protein sidechains ⓘ

In the following table, the Percentiles column shows the percent sidechain outliers of the chain as a percentile score with respect to all X-ray entries followed by that with respect to entries of similar resolution.

The Analysed column shows the number of residues for which the sidechain conformation was analysed, and the total number of residues.

Mol	Chain	Analysed	Rotameric	Outliers	Percentiles	
1	A	365/377 (97%)	353 (97%)	12 (3%)	45	31
1	B	370/377 (98%)	359 (97%)	11 (3%)	48	35
All	All	735/754 (98%)	712 (97%)	23 (3%)	46	33

All (23) residues with a non-rotameric sidechain are listed below:

Mol	Chain	Res	Type
1	A	320	SER
1	A	336	MET
1	A	352	ASP
1	A	370	LYS
1	A	371	ARG
1	A	423	LYS
1	A	469	LYS
1	A	523	LEU
1	A	547	ARG
1	A	601	ASN
1	A	645	LYS
1	A	715	VAL
1	B	320	SER
1	B	322	LEU
1	B	323	GLU
1	B	351	LYS
1	B	353	GLN
1	B	392	SER
1	B	423	LYS
1	B	540	LEU
1	B	547	ARG
1	B	622	SER
1	B	717	LYS

Some sidechains can be flipped to improve hydrogen bonding and reduce clashes. All (1) such

sidechains are listed below:

Mol	Chain	Res	Type
1	B	353	GLN

5.3.3 RNA ⓘ

There are no RNA molecules in this entry.

5.4 Non-standard residues in protein, DNA, RNA chains ⓘ

There are no non-standard protein/DNA/RNA residues in this entry.

5.5 Carbohydrates ⓘ

There are no carbohydrates in this entry.

5.6 Ligand geometry ⓘ

Of 9 ligands modelled in this entry, 1 is monoatomic - leaving 8 for Mogul analysis.

In the following table, the Counts columns list the number of bonds (or angles) for which Mogul statistics could be retrieved, the number of bonds (or angles) that are observed in the model and the number of bonds (or angles) that are defined in the chemical component dictionary. The Link column lists molecule types, if any, to which the group is linked. The Z score for a bond length (or angle) is the number of standard deviations the observed value is removed from the expected value. A bond length (or angle) with $|Z| > 2$ is considered an outlier worth inspection. RMSZ is the root-mean-square of all Z scores of the bond lengths (or angles).

Mol	Type	Chain	Res	Link	Bond lengths			Bond angles		
					Counts	RMSZ	$\# Z > 2$	Counts	RMSZ	$\# Z > 2$
2	HEM	A	750	1	24,50,50	2.32	7 (29%)	16,82,82	2.45	2 (12%)
3	H4B	A	760	-	15,18,18	0.71	0	12,26,26	2.64	5 (41%)
4	EXI	A	800	-	23,23,23	0.44	0	30,30,30	1.69	5 (16%)
5	ACT	A	860	-	0,3,3	0.00	-	0,3,3	0.00	-
2	HEM	B	750	1	24,50,50	2.34	8 (33%)	16,82,82	1.88	2 (12%)
3	H4B	B	760	-	15,18,18	0.92	0	12,26,26	2.67	6 (50%)
4	EXI	B	800	-	23,23,23	0.47	0	30,30,30	1.77	6 (20%)
5	ACT	B	860	-	0,3,3	0.00	-	0,3,3	0.00	-

In the following table, the Chirals column lists the number of chiral outliers, the number of chiral centers analysed, the number of these observed in the model and the number defined in the chemical

component dictionary. Similar counts are reported in the Torsion and Rings columns. '-' means no outliers of that kind were identified.

Mol	Type	Chain	Res	Link	Chirals	Torsions	Rings
2	HEM	A	750	1	-	0/6/54/54	0/0/8/8
3	H4B	A	760	-	-	0/8/17/17	0/2/2/2
4	EXI	A	800	-	-	0/13/13/13	0/2/2/2
5	ACT	A	860	-	-	0/0/0/0	0/0/0/0
2	HEM	B	750	1	-	0/6/54/54	0/0/8/8
3	H4B	B	760	-	-	0/8/17/17	0/2/2/2
4	EXI	B	800	-	-	0/13/13/13	0/2/2/2
5	ACT	B	860	-	-	0/0/0/0	0/0/0/0

All (15) bond length outliers are listed below:

Mol	Chain	Res	Type	Atoms	Z	Observed(Å)	Ideal(Å)
2	A	750	HEM	C3B-C2B	-5.43	1.33	1.40
2	B	750	HEM	C3B-C2B	-4.62	1.34	1.40
2	B	750	HEM	C3C-C2C	-4.18	1.35	1.40
2	A	750	HEM	C3C-C2C	-3.51	1.35	1.40
2	B	750	HEM	C1B-NB	2.01	1.39	1.36
2	A	750	HEM	CMC-C2C	2.08	1.56	1.51
2	B	750	HEM	C4D-ND	2.39	1.40	1.36
2	A	750	HEM	C4D-ND	2.42	1.40	1.36
2	B	750	HEM	CAD-C3D	2.42	1.55	1.52
2	B	750	HEM	C3B-CAB	3.43	1.55	1.47
2	A	750	HEM	C3B-CAB	3.60	1.55	1.47
2	A	750	HEM	C3C-CAC	3.84	1.55	1.47
2	B	750	HEM	C3C-CAC	4.09	1.56	1.47
2	A	750	HEM	C3D-C2D	5.17	1.53	1.37
2	B	750	HEM	C3D-C2D	5.20	1.53	1.37

All (26) bond angle outliers are listed below:

Mol	Chain	Res	Type	Atoms	Z	Observed(°)	Ideal(°)
2	A	750	HEM	CBA-CAA-C2A	-6.61	100.87	112.49
2	A	750	HEM	CBD-CAD-C3D	-5.87	102.16	112.47
2	B	750	HEM	CBA-CAA-C2A	-5.20	103.34	112.49
2	B	750	HEM	CBD-CAD-C3D	-3.99	105.47	112.47
4	B	800	EXI	C08-C09-C13	-3.85	100.53	113.27
3	A	760	H4B	N3-C2-N1	-3.37	120.00	125.51
3	B	760	H4B	N3-C2-N1	-3.02	120.58	125.51
4	A	800	EXI	C08-C09-C13	-2.71	104.31	113.27
4	B	800	EXI	C15-C14-C13	-2.20	117.61	120.63

Continued on next page...

Continued from previous page...

Mol	Chain	Res	Type	Atoms	Z	Observed(°)	Ideal(°)
4	B	800	EXI	C09-C13-C12	-2.13	118.19	121.63
3	B	760	H4B	N2-C2-N3	2.17	120.78	117.20
3	B	760	H4B	C2-N1-C8A	2.48	120.21	114.63
3	B	760	H4B	C4A-C8A-N8	2.65	121.07	118.26
4	A	800	EXI	C08-C06-N01	2.67	119.77	115.71
4	B	800	EXI	C14-C13-C12	2.92	119.64	116.58
3	A	760	H4B	C2-N1-C8A	3.00	121.37	114.63
4	A	800	EXI	C02-N01-C06	3.19	120.69	118.20
4	A	800	EXI	C14-C13-C12	3.38	120.12	116.58
3	A	760	H4B	C4A-C8A-N8	3.46	121.93	118.26
4	B	800	EXI	C02-N01-C06	3.77	121.14	118.20
4	B	800	EXI	C21-N20-C19	3.96	119.64	111.78
4	A	800	EXI	C21-N20-C19	4.13	119.96	111.78
3	A	760	H4B	C4-N3-C2	4.47	121.12	115.88
3	B	760	H4B	C4-N3-C2	4.49	121.14	115.88
3	A	760	H4B	C4-C4A-C8A	4.96	118.98	114.61
3	B	760	H4B	C4-C4A-C8A	5.96	119.86	114.61

There are no chirality outliers.

There are no torsion outliers.

There are no ring outliers.

4 monomers are involved in 8 short contacts:

Mol	Chain	Res	Type	Clashes	Symm-Clashes
2	A	750	HEM	4	0
4	A	800	EXI	1	0
2	B	750	HEM	2	0
4	B	800	EXI	3	0

5.7 Other polymers

There are no such residues in this entry.

5.8 Polymer linkage issues

There are no chain breaks in this entry.

6 Fit of model and data ⓘ

6.1 Protein, DNA and RNA chains ⓘ

In the following table, the column labelled ‘#RSRZ> 2’ contains the number (and percentage) of RSRZ outliers, followed by percent RSRZ outliers for the chain as percentile scores relative to all X-ray entries and entries of similar resolution. The OWAB column contains the minimum, median, 95th percentile and maximum values of the occupancy-weighted average B-factor per residue. The column labelled ‘Q< 0.9’ lists the number of (and percentage) of residues with an average occupancy less than 0.9.

Mol	Chain	Analysed	<RSRZ>	#RSRZ>2	OWAB(Å ²)	Q<0.9
1	A	408/422 (96%)	0.53	44 (10%) 8 11	20, 40, 78, 111	0
1	B	411/422 (97%)	0.08	24 (5%) 26 35	19, 33, 59, 91	0
All	All	819/844 (97%)	0.30	68 (8%) 14 21	19, 36, 73, 111	0

All (68) RSRZ outliers are listed below:

Mol	Chain	Res	Type	RSRZ
1	A	715	VAL	7.6
1	A	488	PRO	6.9
1	B	300	PHE	6.9
1	A	352	ASP	6.8
1	A	717	LYS	6.0
1	B	348	VAL	5.6
1	A	716	TRP	5.6
1	A	351	LYS	5.2
1	A	300	PHE	4.6
1	B	350	THR	4.2
1	B	620	LYS	4.2
1	A	507	GLN	4.1
1	A	355	PHE	4.0
1	A	486	LYS	3.9
1	A	350	THR	3.9
1	B	352	ASP	3.8
1	A	388	ILE	3.6
1	A	619	ARG	3.6
1	A	713	THR	3.5
1	A	678	TRP	3.4
1	B	616	LEU	3.4
1	B	619	ARG	3.3
1	B	338	PRO	3.3
1	B	611	ALA	3.2

Continued on next page...

Continued from previous page...

Mol	Chain	Res	Type	RSRZ
1	A	679	ILE	3.0
1	A	391	THR	3.0
1	A	677	VAL	3.0
1	B	718	GLY	2.9
1	A	299	ARG	2.9
1	A	712	ASN	2.9
1	A	390	SER	2.9
1	B	322	LEU	2.8
1	A	489	ASP	2.8
1	A	508	GLN	2.8
1	A	322	LEU	2.7
1	A	676	TRP	2.7
1	A	680	VAL	2.7
1	B	677	VAL	2.6
1	A	321	THR	2.6
1	B	615	ASP	2.6
1	B	349	ARG	2.5
1	A	470	HIS	2.5
1	A	711	TRP	2.5
1	A	469	LYS	2.5
1	A	386	LYS	2.4
1	A	490	GLY	2.4
1	A	714	HIS	2.4
1	A	528	GLY	2.4
1	A	467	ASP	2.4
1	A	681	PRO	2.3
1	B	618	MET	2.3
1	A	389	GLU	2.3
1	A	415	CYS	2.3
1	A	491	SER	2.2
1	B	676	TRP	2.1
1	A	504	ILE	2.1
1	B	678	TRP	2.1
1	B	617	ASP	2.1
1	B	667	ARG	2.0
1	A	466	THR	2.0
1	B	691	PHE	2.0
1	B	681	PRO	2.0
1	B	682	PRO	2.0
1	A	588	TYR	2.0
1	B	567	VAL	2.0
1	B	715	VAL	2.0

Continued on next page...

Continued from previous page...

Mol	Chain	Res	Type	RSRZ
1	A	480	ILE	2.0
1	A	593	ILE	2.0

6.2 Non-standard residues in protein, DNA, RNA chains [i](#)

There are no non-standard protein/DNA/RNA residues in this entry.

6.3 Carbohydrates [i](#)

There are no carbohydrates in this entry.

6.4 Ligands [i](#)

In the following table, the Atoms column lists the number of modelled atoms in the group and the number defined in the chemical component dictionary. LLDF column lists the quality of electron density of the group with respect to its neighbouring residues in protein, DNA or RNA chains. The B-factors column lists the minimum, median, 95th percentile and maximum values of B factors of atoms in the group. The column labelled 'Q< 0.9' lists the number of atoms with occupancy less than 0.9.

Mol	Type	Chain	Res	Atoms	RSCC	RSR	LLDF	B-factors(Å ²)	Q<0.9
5	ACT	A	860	4/4	0.96	0.13	3.98	47,48,49,50	0
4	EXI	B	800	22/22	0.94	0.23	2.83	20,66,78,80	0
4	EXI	A	800	22/22	0.94	0.27	2.75	23,63,78,81	0
2	HEM	B	750	43/43	0.98	0.17	1.47	16,26,33,42	0
2	HEM	A	750	43/43	0.98	0.18	0.78	17,26,37,42	0
5	ACT	B	860	4/4	0.95	0.10	0.54	39,41,44,48	0
3	H4B	A	760	17/17	0.97	0.16	0.34	22,30,35,35	0
3	H4B	B	760	17/17	0.96	0.16	0.32	20,25,32,32	0
6	ZN	A	900	1/1	1.00	0.05	-1.87	30,30,30,30	0

6.5 Other polymers [i](#)

There are no such residues in this entry.