



Full wwPDB X-ray Structure Validation Report ⓘ

Feb 19, 2016 – 06:09 PM GMT

PDB ID : 1H61
Title : Structure of Pentaerythritol Tetranitrate Reductase in complex with prednisone
Authors : Barna, T.M.; Moody, P.C.E.
Deposited on : 2001-06-04
Resolution : 1.40 Å(reported)

This is a Full wwPDB X-ray Structure Validation Report for a publicly released PDB entry.
We welcome your comments at validation@mail.wwpdb.org
A user guide is available at
<http://wwpdb.org/validation/2016/XrayValidationReportHelp>
with specific help available everywhere you see the ⓘ symbol.

The following versions of software and data (see [references ⓘ](#)) were used in the production of this report:

MolProbity : 4.02b-467
Mogul : 1.7.1 (RC1), CSD as537be (2016)
Xtriage (Phenix) : 1.9-1692
EDS : rb-20026982
Percentile statistics : 20151230.v01 (using entries in the PDB archive December 30th 2015)
Refmac : 5.8.0135
CCP4 : 6.5.0
Ideal geometry (proteins) : Engh & Huber (2001)
Ideal geometry (DNA, RNA) : Parkinson et al. (1996)
Validation Pipeline (wwPDB-VP) : rb-20026982

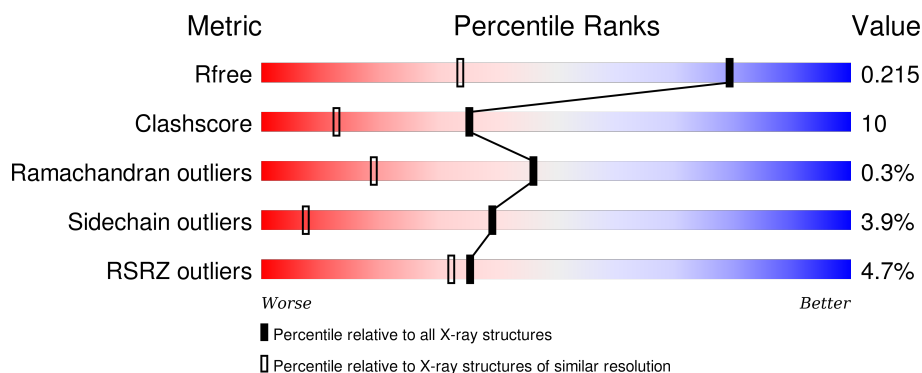
1 Overall quality at a glance

The following experimental techniques were used to determine the structure:

X-RAY DIFFRACTION

The reported resolution of this entry is 1.40 Å.

Percentile scores (ranging between 0-100) for global validation metrics of the entry are shown in the following graphic. The table shows the number of entries on which the scores are based.



Metric	Whole archive (#Entries)	Similar resolution (#Entries, resolution range(Å))
R_{free}	91344	1199 (1.40-1.40)
Clashscore	102246	1295 (1.40-1.40)
Ramachandran outliers	100387	1259 (1.40-1.40)
Sidechain outliers	100360	1258 (1.40-1.40)
RSRZ outliers	91569	1198 (1.40-1.40)

The table below summarises the geometric issues observed across the polymeric chains and their fit to the electron density. The red, orange, yellow and green segments on the lower bar indicate the fraction of residues that contain outliers for ≥ 3 , 2, 1 and 0 types of geometric quality criteria. A grey segment represents the fraction of residues that are not modelled. The numeric value for each fraction is indicated below the corresponding segment, with a dot representing fractions $\leq 5\%$. The upper red bar (where present) indicates the fraction of residues that have poor fit to the electron density. The numeric value is given above the bar.

Mol	Chain	Length	Quality of chain
1	A	364	<div> <div>5%</div> <div>84%</div> <div>13%</div> <div>.</div> </div>

2 Entry composition [i](#)

There are 4 unique types of molecules in this entry. The entry contains 3380 atoms, of which 0 are hydrogens and 0 are deuteriums.

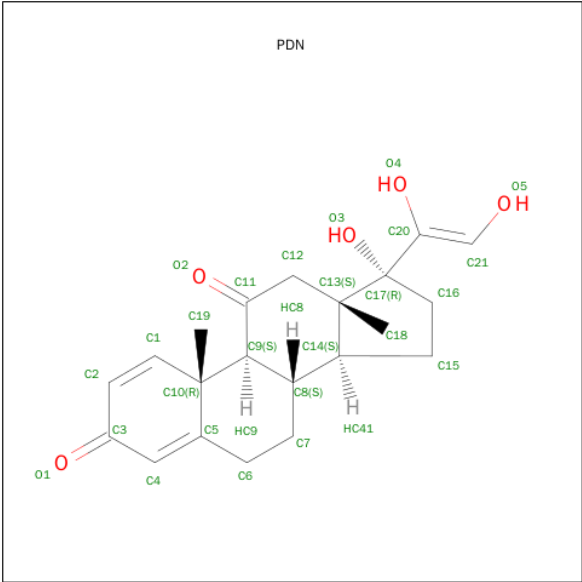
In the tables below, the ZeroOcc column contains the number of atoms modelled with zero occupancy, the AltConf column contains the number of residues with at least one atom in alternate conformation and the Trace column contains the number of residues modelled with at most 2 atoms.

- Molecule 1 is a protein called PENTAERYTHRITOL TETRANITRATE REDUCTASE.

Mol	Chain	Residues	Atoms					ZeroOcc	AltConf	Trace
1	A	364	Total	C	N	O	S	0	0	0
			2778	1737	502	535	4			

- Molecule 2 is FLAVIN MONONUCLEOTIDE (three-letter code: FMN) (formula: C₁₇H₂₁N₄O₉P).





Mol	Chain	Residues	Atoms			ZeroOcc	AltConf
3	A	1	Total	C	O	0	0
			26	21	5		

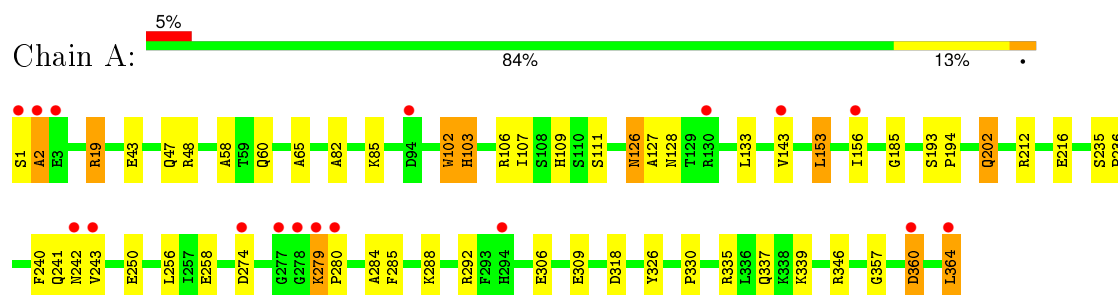
- Molecule 4 is water.

Mol	Chain	Residues	Atoms		ZeroOcc	AltConf
4	A	545	Total	O	0	0
			545	545		

3 Residue-property plots

These plots are drawn for all protein, RNA and DNA chains in the entry. The first graphic for a chain summarises the proportions of errors displayed in the second graphic. The second graphic shows the sequence view annotated by issues in geometry and electron density. Residues are color-coded according to the number of geometric quality criteria for which they contain at least one outlier: green = 0, yellow = 1, orange = 2 and red = 3 or more. A red dot above a residue indicates a poor fit to the electron density ($RSRZ > 2$). Stretches of 2 or more consecutive residues without any outlier are shown as a green connector. Residues present in the sample, but not in the model, are shown in grey.

● Molecule 1: PENTAERYTHRITOL TETRANITRATE REDUCTASE



4 Data and refinement statistics

Property	Value	Source
Space group	P 21 21 21	Depositor
Cell constants a, b, c, α , β , γ	56.78Å 69.48Å 88.82Å 90.00° 90.00° 90.00°	Depositor
Resolution (Å)	44.00 – 1.40 43.97 – 1.40	Depositor EDS
% Data completeness (in resolution range)	97.4 (44.00-1.40) 97.6 (43.97-1.40)	Depositor EDS
R_{merge}	0.06	Depositor
R_{sym}	(Not available)	Depositor
$\langle I/\sigma(I) \rangle$ ¹	8.62 (at 1.40Å)	Xtriage
Refinement program	CNS 1.0	Depositor
R, R_{free}	0.198 , 0.212 0.200 , 0.215	Depositor DCC
R_{free} test set	3341 reflections (4.90%)	DCC
Wilson B-factor (Å ²)	12.4	Xtriage
Anisotropy	0.165	Xtriage
Bulk solvent k_{sol} (e/Å ³), B_{sol} (Å ²)	0.37 , 45.2	EDS
Estimated twinning fraction	No twinning to report.	Xtriage
L-test for twinning ²	$\langle L \rangle = 0.50$, $\langle L^2 \rangle = 0.33$	Xtriage
Outliers	0 of 68176 reflections	Xtriage
F_o, F_c correlation	0.95	EDS
Total number of atoms	3380	wwPDB-VP
Average B, all atoms (Å ²)	13.0	wwPDB-VP

Xtriage's analysis on translational NCS is as follows: *The largest off-origin peak in the Patterson function is 5.67% of the height of the origin peak. No significant pseudotranslation is detected.*

¹Intensities estimated from amplitudes.

²Theoretical values of $\langle |L| \rangle$, $\langle L^2 \rangle$ for acentric reflections are 0.5, 0.375 respectively for untwinned datasets, and 0.333, 0.2 for perfectly twinned datasets.

5 Model quality

5.1 Standard geometry

Bond lengths and bond angles in the following residue types are not validated in this section: FMN, PDN

The Z score for a bond length (or angle) is the number of standard deviations the observed value is removed from the expected value. A bond length (or angle) with $|Z| > 5$ is considered an outlier worth inspection. RMSZ is the root-mean-square of all Z scores of the bond lengths (or angles).

Mol	Chain	Bond lengths		Bond angles	
		RMSZ	$\# Z > 5$	RMSZ	$\# Z > 5$
1	A	0.28	0/2835	0.60	1/3849 (0.0%)

There are no bond length outliers.

All (1) bond angle outliers are listed below:

Mol	Chain	Res	Type	Atoms	Z	Observed(°)	Ideal(°)
1	A	103	HIS	N-CA-C	-5.54	96.04	111.00

There are no chirality outliers.

There are no planarity outliers.

5.2 Too-close contacts

In the following table, the Non-H and H(model) columns list the number of non-hydrogen atoms and hydrogen atoms in the chain respectively. The H(added) column lists the number of hydrogen atoms added and optimized by MolProbity. The Clashes column lists the number of clashes within the asymmetric unit, whereas Symm-Clashes lists symmetry related clashes.

Mol	Chain	Non-H	H(model)	H(added)	Clashes	Symm-Clashes
1	A	2778	0	2731	55	0
2	A	31	0	19	0	0
3	A	26	0	25	0	0
4	A	545	0	0	2	0
All	All	3380	0	2775	55	0

The all-atom clashscore is defined as the number of clashes found per 1000 atoms (including hydrogen atoms). The all-atom clashscore for this structure is 10.

All (55) close contacts within the same asymmetric unit are listed below, sorted by their clash

magnitude.

Atom-1	Atom-2	Interatomic distance (Å)	Clash overlap (Å)
1:A:202:GLN:H	1:A:202:GLN:HE21	1.03	0.99
1:A:126:ASN:HD22	1:A:128:ASN:H	1.10	0.92
1:A:250:GLU:OE1	1:A:288:LYS:HE3	1.76	0.86
1:A:346:ARG:HH22	1:A:360:ASP:HB3	1.41	0.85
1:A:240:PHE:O	1:A:243:VAL:HG22	1.77	0.85
1:A:2:ALA:H	1:A:339:LYS:NZ	1.81	0.79
1:A:202:GLN:H	1:A:202:GLN:NE2	1.81	0.77
1:A:202:GLN:HE21	1:A:202:GLN:N	1.83	0.76
1:A:185:GLY:HA2	1:A:243:VAL:HG21	1.72	0.71
1:A:60:GLN:HE21	1:A:102:TRP:HE1	1.38	0.71
1:A:2:ALA:H	1:A:339:LYS:HZ2	1.41	0.67
1:A:126:ASN:ND2	1:A:128:ASN:H	1.90	0.66
1:A:19:ARG:HG2	1:A:318:ASP:O	1.97	0.64
1:A:133:LEU:CD1	1:A:143:VAL:HG11	2.28	0.64
1:A:58:ALA:HB1	1:A:102:TRP:CD2	2.36	0.61
1:A:1:SER:H2	1:A:339:LYS:HZ1	1.50	0.59
1:A:185:GLY:CA	1:A:243:VAL:HG21	2.33	0.59
1:A:241:GLN:O	1:A:242:ASN:HB3	2.06	0.55
1:A:243:VAL:O	1:A:243:VAL:HG23	2.05	0.55
1:A:153:LEU:HA	1:A:156:ILE:HD13	1.88	0.55
1:A:107:ILE:HD13	1:A:127:ALA:CB	2.38	0.54
1:A:65:ALA:HB1	1:A:103:HIS:HA	1.88	0.54
1:A:2:ALA:H	1:A:339:LYS:HZ1	1.56	0.53
1:A:109:HIS:CD2	1:A:111:SER:H	2.27	0.53
1:A:48:ARG:HG2	1:A:330:PRO:HA	1.91	0.53
1:A:85:LYS:HD3	4:A:2078:HOH:O	2.09	0.52
1:A:274:ASP:HB2	4:A:2392:HOH:O	2.09	0.51
1:A:285:PHE:HA	1:A:288:LYS:NZ	2.26	0.50
1:A:156:ILE:HD12	1:A:156:ILE:N	2.25	0.50
1:A:107:ILE:HD13	1:A:127:ALA:HB1	1.93	0.50
1:A:212:ARG:O	1:A:216:GLU:HG3	2.13	0.48
1:A:1:SER:N	1:A:339:LYS:HZ1	2.10	0.48
1:A:133:LEU:HG	1:A:143:VAL:CG1	2.45	0.47
1:A:258:GLU:HG3	1:A:292:ARG:HD3	1.96	0.46
1:A:109:HIS:HD2	1:A:111:SER:OG	1.99	0.46
1:A:107:ILE:CD1	1:A:127:ALA:HB1	2.46	0.45
1:A:153:LEU:O	1:A:156:ILE:HD13	2.16	0.45
1:A:1:SER:O	1:A:2:ALA:C	2.55	0.45
1:A:285:PHE:HA	1:A:288:LYS:HE2	1.98	0.45
1:A:284:ALA:C	1:A:288:LYS:HZ3	2.21	0.44
1:A:133:LEU:HG	1:A:143:VAL:HG11	2.00	0.44

Continued on next page...

Continued from previous page...

Atom-1	Atom-2	Interatomic distance (Å)	Clash overlap (Å)
1:A:2:ALA:HB1	1:A:309:GLU:OE2	2.17	0.43
1:A:279:LYS:HA	1:A:280:PRO:HD3	1.87	0.43
1:A:193:SER:HA	1:A:194:PRO:HD3	1.91	0.43
1:A:43:GLU:O	1:A:47:GLN:HG3	2.19	0.42
1:A:82:ALA:HA	1:A:85:LYS:HE2	2.02	0.42
1:A:235:SER:HB2	1:A:240:PHE:CZ	2.55	0.41
1:A:109:HIS:HD2	1:A:111:SER:H	1.65	0.41
1:A:306:GLU:H	1:A:306:GLU:CD	2.23	0.41
1:A:106:ARG:HG3	1:A:127:ALA:HB2	2.01	0.41
1:A:357:GLY:H	1:A:360:ASP:HB2	1.86	0.41
1:A:1:SER:N	1:A:337:GLN:O	2.51	0.41
1:A:335:ARG:CZ	1:A:364:LEU:HD13	2.50	0.41
1:A:242:ASN:O	1:A:242:ASN:CG	2.59	0.40
1:A:1:SER:N	1:A:339:LYS:NZ	2.68	0.40

There are no symmetry-related clashes.

5.3 Torsion angles [i](#)

5.3.1 Protein backbone [i](#)

In the following table, the Percentiles column shows the percent Ramachandran outliers of the chain as a percentile score with respect to all X-ray entries followed by that with respect to entries of similar resolution.

The Analysed column shows the number of residues for which the backbone conformation was analysed, and the total number of residues.

Mol	Chain	Analysed	Favoured	Allowed	Outliers	Percentiles
1	A	362/364 (100%)	348 (96%)	13 (4%)	1 (0%)	46 19

All (1) Ramachandran outliers are listed below:

Mol	Chain	Res	Type
1	A	2	ALA

5.3.2 Protein sidechains [i](#)

In the following table, the Percentiles column shows the percent sidechain outliers of the chain as a percentile score with respect to all X-ray entries followed by that with respect to entries of similar

resolution.

The Analysed column shows the number of residues for which the sidechain conformation was analysed, and the total number of residues.

Mol	Chain	Analysed	Rotameric	Outliers	Percentiles
1	A	284/284 (100%)	273 (96%)	11 (4%)	39 7

All (11) residues with a non-rotameric sidechain are listed below:

Mol	Chain	Res	Type
1	A	19	ARG
1	A	102	TRP
1	A	126	ASN
1	A	153	LEU
1	A	202	GLN
1	A	236	PRO
1	A	256	LEU
1	A	279	LYS
1	A	326	TYR
1	A	360	ASP
1	A	364	LEU

Some sidechains can be flipped to improve hydrogen bonding and reduce clashes. All (6) such sidechains are listed below:

Mol	Chain	Res	Type
1	A	60	GLN
1	A	109	HIS
1	A	126	ASN
1	A	198	GLN
1	A	202	GLN
1	A	241	GLN

5.3.3 RNA ⓘ

There are no RNA molecules in this entry.

5.4 Non-standard residues in protein, DNA, RNA chains ⓘ

There are no non-standard protein/DNA/RNA residues in this entry.

5.5 Carbohydrates

There are no carbohydrates in this entry.

5.6 Ligand geometry

2 ligands are modelled in this entry.

In the following table, the Counts columns list the number of bonds (or angles) for which Mogul statistics could be retrieved, the number of bonds (or angles) that are observed in the model and the number of bonds (or angles) that are defined in the chemical component dictionary. The Link column lists molecule types, if any, to which the group is linked. The Z score for a bond length (or angle) is the number of standard deviations the observed value is removed from the expected value. A bond length (or angle) with $|Z| > 2$ is considered an outlier worth inspection. RMSZ is the root-mean-square of all Z scores of the bond lengths (or angles).

Mol	Type	Chain	Res	Link	Bond lengths			Bond angles		
					Counts	RMSZ	# $ Z > 2$	Counts	RMSZ	# $ Z > 2$
2	FMN	A	1365	-	32,33,33	1.76	6 (18%)	34,50,50	2.91	9 (26%)
3	PDN	A	1366	-	25,29,29	3.94	16 (64%)	38,48,48	1.78	9 (23%)

In the following table, the Chirals column lists the number of chiral outliers, the number of chiral centers analysed, the number of these observed in the model and the number defined in the chemical component dictionary. Similar counts are reported in the Torsion and Rings columns. '-' means no outliers of that kind were identified.

Mol	Type	Chain	Res	Link	Chirals	Torsions	Rings
2	FMN	A	1365	-	-	0/18/18/18	0/3/3/3
3	PDN	A	1366	-	-	0/0/73/73	0/4/4/4

All (22) bond length outliers are listed below:

Mol	Chain	Res	Type	Atoms	Z	Observed(Å)	Ideal(Å)
3	A	1366	PDN	C7-C8	-6.61	1.41	1.53
3	A	1366	PDN	C12-C13	-4.22	1.48	1.54
3	A	1366	PDN	C16-C15	-4.10	1.41	1.54
2	A	1365	FMN	O4-C4	-3.81	1.14	1.24
3	A	1366	PDN	C7-C6	-2.36	1.47	1.52
3	A	1366	PDN	C4-C5	2.17	1.37	1.34
3	A	1366	PDN	C12-C11	2.20	1.54	1.51
3	A	1366	PDN	O5-C21	2.27	1.43	1.33
2	A	1365	FMN	C7M-C7	2.47	1.55	1.51
3	A	1366	PDN	C18-C13	2.52	1.59	1.54
2	A	1365	FMN	C9A-N10	2.95	1.43	1.38

Continued on next page...

Continued from previous page...

Mol	Chain	Res	Type	Atoms	Z	Observed(Å)	Ideal(Å)
2	A	1365	FMN	C2-N3	3.33	1.45	1.38
2	A	1365	FMN	C6-C5A	3.72	1.47	1.41
3	A	1366	PDN	C2-C1	3.98	1.40	1.33
3	A	1366	PDN	C10-C1	4.09	1.55	1.50
2	A	1365	FMN	C4A-C10	4.53	1.49	1.40
3	A	1366	PDN	C9-C8	4.84	1.61	1.55
3	A	1366	PDN	C9-C11	5.00	1.60	1.52
3	A	1366	PDN	O3-C17	5.37	1.52	1.43
3	A	1366	PDN	C10-C5	5.74	1.58	1.51
3	A	1366	PDN	C6-C5	7.15	1.62	1.50
3	A	1366	PDN	O2-C11	8.85	1.37	1.21

All (18) bond angle outliers are listed below:

Mol	Chain	Res	Type	Atoms	Z	Observed(°)	Ideal(°)
2	A	1365	FMN	C4-C4A-C10	-6.84	115.57	119.94
2	A	1365	FMN	N3-C2-N1	-5.83	117.87	127.69
2	A	1365	FMN	C4A-C10-N10	-5.76	116.34	120.52
3	A	1366	PDN	C12-C11-C9	-3.53	110.29	115.94
2	A	1365	FMN	C4A-C4-N3	-3.41	119.06	123.52
3	A	1366	PDN	C7-C6-C5	-3.30	105.75	111.90
2	A	1365	FMN	C5A-C9A-N10	-2.99	115.34	117.58
3	A	1366	PDN	C17-C13-C14	-2.83	96.70	99.81
3	A	1366	PDN	C10-C5-C4	-2.51	120.59	122.27
3	A	1366	PDN	C19-C10-C1	-2.19	102.04	107.88
2	A	1365	FMN	C9-C8-C7	-2.09	115.89	119.97
3	A	1366	PDN	C6-C5-C10	2.03	117.49	115.80
3	A	1366	PDN	C9-C10-C1	2.30	114.41	110.41
3	A	1366	PDN	C5-C4-C3	2.42	125.18	122.74
2	A	1365	FMN	C4A-N5-C5A	3.27	120.57	116.72
2	A	1365	FMN	C4-C4A-N5	3.37	122.80	118.70
3	A	1366	PDN	C6-C7-C8	4.86	120.94	111.71
2	A	1365	FMN	C4-N3-C2	10.18	123.66	115.16

There are no chirality outliers.

There are no torsion outliers.

There are no ring outliers.

No monomer is involved in short contacts.

5.7 Other polymers

There are no such residues in this entry.

5.8 Polymer linkage issues

There are no chain breaks in this entry.

6 Fit of model and data ⓘ

6.1 Protein, DNA and RNA chains ⓘ

In the following table, the column labelled ‘#RSRZ> 2’ contains the number (and percentage) of RSRZ outliers, followed by percent RSRZ outliers for the chain as percentile scores relative to all X-ray entries and entries of similar resolution. The OWAB column contains the minimum, median, 95th percentile and maximum values of the occupancy-weighted average B-factor per residue. The column labelled ‘Q< 0.9’ lists the number of (and percentage) of residues with an average occupancy less than 0.9.

Mol	Chain	Analysed	<RSRZ>	#RSRZ>2	OWAB(Å ²)	Q<0.9
1	A	364/364 (100%)	0.62	17 (4%) 35 32	6, 10, 21, 43	0

All (17) RSRZ outliers are listed below:

Mol	Chain	Res	Type	RSRZ
1	A	2	ALA	9.0
1	A	277	GLY	9.0
1	A	1	SER	8.4
1	A	242	ASN	4.2
1	A	278	GLY	4.1
1	A	143	VAL	3.7
1	A	156	ILE	3.2
1	A	279	LYS	3.1
1	A	360	ASP	3.1
1	A	3	GLU	3.1
1	A	364	LEU	2.9
1	A	274	ASP	2.9
1	A	130	ARG	2.5
1	A	280	PRO	2.5
1	A	243	VAL	2.3
1	A	294	HIS	2.2
1	A	94	ASP	2.0

6.2 Non-standard residues in protein, DNA, RNA chains ⓘ

There are no non-standard protein/DNA/RNA residues in this entry.

6.3 Carbohydrates ⓘ

There are no carbohydrates in this entry.

6.4 Ligands [i](#)

In the following table, the Atoms column lists the number of modelled atoms in the group and the number defined in the chemical component dictionary. LLDF column lists the quality of electron density of the group with respect to its neighbouring residues in protein, DNA or RNA chains. The B-factors column lists the minimum, median, 95th percentile and maximum values of B factors of atoms in the group. The column labelled 'Q< 0.9' lists the number of atoms with occupancy less than 0.9.

Mol	Type	Chain	Res	Atoms	RSCC	RSR	LLDF	B-factors(\AA^2)	Q<0.9
2	FMN	A	1365	31/31	0.93	0.12	1.68	5,7,13,17	0
3	PDN	A	1366	26/26	0.76	0.18	1.46	9,15,18,21	0

6.5 Other polymers [i](#)

There are no such residues in this entry.