



Full wwPDB X-ray Structure Validation Report ⓘ

Feb 1, 2016 – 02:29 AM GMT

PDB ID : 2HDF
Title : Crystal structure of the Colicin I receptor Cir from E.coli
Authors : Buchanan, S.K.; Esser, L.; Lukacik, P.
Deposited on : 2006-06-20
Resolution : 2.65 Å(reported)

This is a Full wwPDB X-ray Structure Validation Report for a publicly released PDB entry.
We welcome your comments at validation@mail.wwpdb.org
A user guide is available at
<http://wwpdb.org/validation/2016/XrayValidationReportHelp>
with specific help available everywhere you see the ⓘ symbol.

The following versions of software and data (see [references ⓘ](#)) were used in the production of this report:

MolProbity : 4.02b-467
Mogul : 1.7 (RC4), CSD as536be (2015)
Xtriage (Phenix) : 1.9-1692
EDS : rb-20026688
Percentile statistics : 20151230.v01 (using entries in the PDB archive December 30th 2015)
Refmac : 5.8.0135
CCP4 : 6.5.0
Ideal geometry (proteins) : Engh & Huber (2001)
Ideal geometry (DNA, RNA) : Parkinson et al. (1996)
Validation Pipeline (wwPDB-VP) : trunk26865

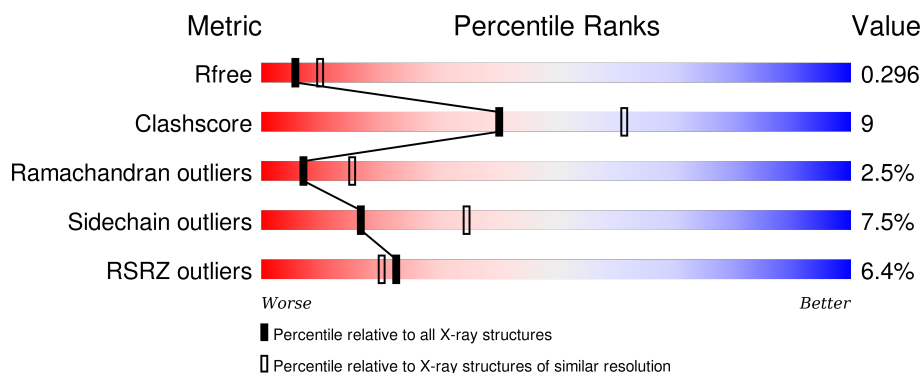
1 Overall quality at a glance

The following experimental techniques were used to determine the structure:

X-RAY DIFFRACTION


The reported resolution of this entry is 2.65 Å.

Percentile scores (ranging between 0-100) for global validation metrics of the entry are shown in the following graphic. The table shows the number of entries on which the scores are based.



Metric	Whole archive (#Entries)	Similar resolution (#Entries, resolution range(Å))
R_{free}	91344	3152 (2.70-2.62)
Clashscore	102246	3524 (2.70-2.62)
Ramachandran outliers	100387	3469 (2.70-2.62)
Sidechain outliers	100360	3469 (2.70-2.62)
RSRZ outliers	91569	3161 (2.70-2.62)

The table below summarises the geometric issues observed across the polymeric chains and their fit to the electron density. The red, orange, yellow and green segments on the lower bar indicate the fraction of residues that contain outliers for ≥ 3 , 2, 1 and 0 types of geometric quality criteria. A grey segment represents the fraction of residues that are not modelled. The numeric value for each fraction is indicated below the corresponding segment, with a dot representing fractions $\leq 5\%$. The upper red bar (where present) indicates the fraction of residues that have poor fit to the electron density. The numeric value is given above the bar.

Mol	Chain	Length	Quality of chain
1	A	639	

2 Entry composition

There are 4 unique types of molecules in this entry. The entry contains 4558 atoms, of which 0 are hydrogens and 0 are deuteriums.

In the tables below, the ZeroOcc column contains the number of atoms modelled with zero occupancy, the AltConf column contains the number of residues with at least one atom in alternate conformation and the Trace column contains the number of residues modelled with at most 2 atoms.

- Molecule 1 is a protein called Colicin I receptor.

Mol	Chain	Residues	Atoms						ZeroOcc	AltConf	Trace
1	A	584	Total	C	N	O	S	Se	0	2	0
			4513	2828	769	904	2	10			

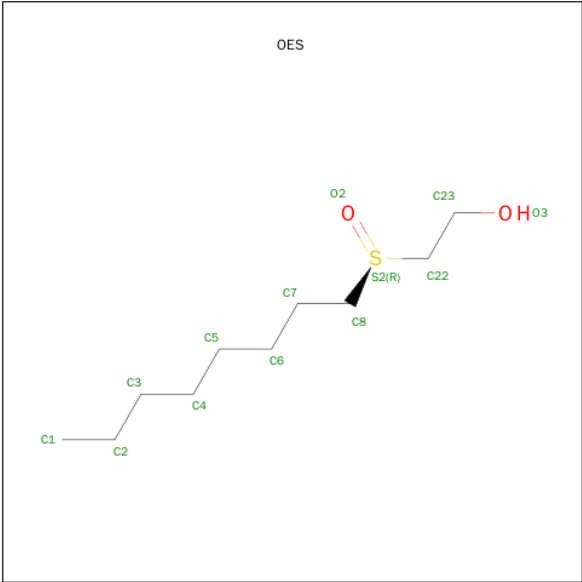
There are 11 discrepancies between the modelled and reference sequences:

Chain	Residue	Modelled	Actual	Comment	Reference
A	25	SER	-	CLONING ARTIFACT	UNP P17315
A	33	MSE	MET	MODIFIED RESIDUE	UNP P17315
A	140	MSE	MET	MODIFIED RESIDUE	UNP P17315
A	201	MSE	MET	MODIFIED RESIDUE	UNP P17315
A	338	MSE	TRP	ENGINEERED	UNP P17315
A	343	MSE	LEU	ENGINEERED	UNP P17315
A	384	MSE	MET	MODIFIED RESIDUE	UNP P17315
A	462	MSE	MET	MODIFIED RESIDUE	UNP P17315
A	589	MSE	PHE	ENGINEERED	UNP P17315
A	591	MSE	VAL	ENGINEERED	UNP P17315
A	657	MSE	MET	MODIFIED RESIDUE	UNP P17315

- Molecule 2 is STRONTIUM ION (three-letter code: SR) (formula: Sr).

Mol	Chain	Residues	Atoms		ZeroOcc	AltConf
2	A	1	Total	Sr	0	0
			1	1		

- Molecule 3 is N-OCTYL-2-HYDROXYETHYL SULFOXIDE (three-letter code: OES) (formula: C₁₀H₂₂O₂S).



Mol	Chain	Residues	Atoms				ZeroOcc	AltConf
3	A	1	Total	C	O	S	0	0
			13	10	2	1		
3	A	1	Total	C	O	S	0	0
			13	10	2	1		

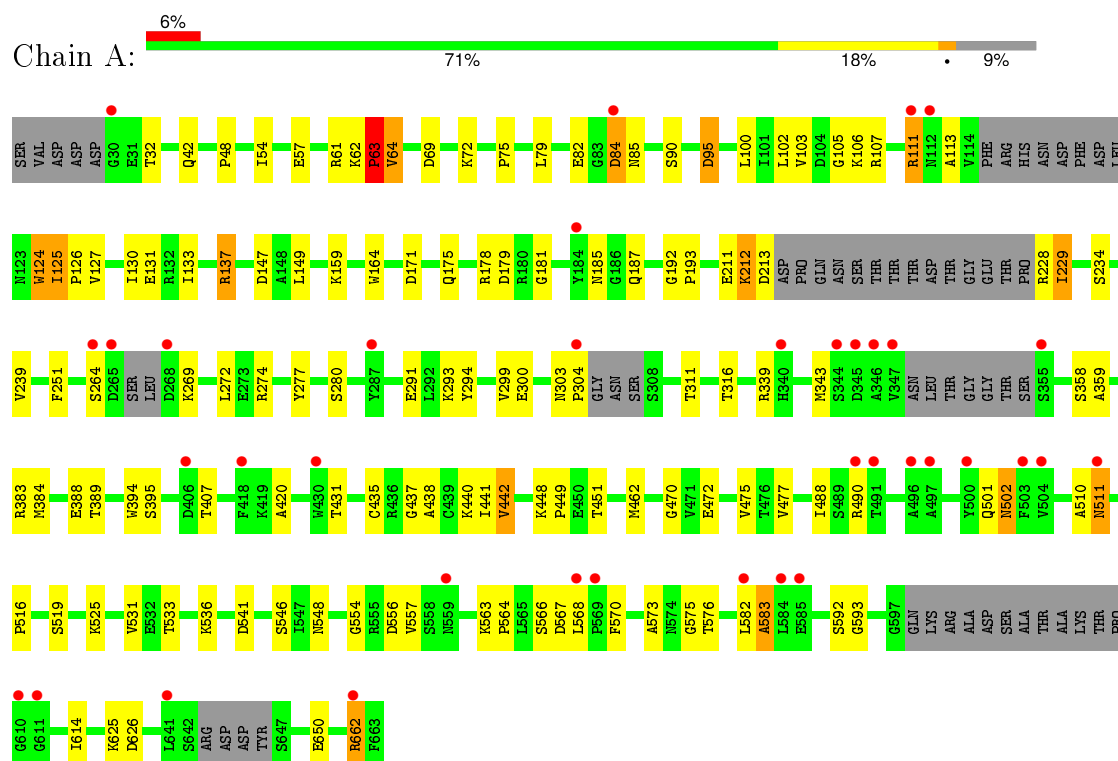
- Molecule 4 is water.

Mol	Chain	Residues	Atoms		ZeroOcc	AltConf
4	A	18	Total	O	0	0
			18	18		

3 Residue-property plots [i](#)

These plots are drawn for all protein, RNA and DNA chains in the entry. The first graphic for a chain summarises the proportions of errors displayed in the second graphic. The second graphic shows the sequence view annotated by issues in geometry and electron density. Residues are color-coded according to the number of geometric quality criteria for which they contain at least one outlier: green = 0, yellow = 1, orange = 2 and red = 3 or more. A red dot above a residue indicates a poor fit to the electron density ($\text{RSRZ} > 2$). Stretches of 2 or more consecutive residues without any outlier are shown as a green connector. Residues present in the sample, but not in the model, are shown in grey.

• Molecule 1: Colicin I receptor



4 Data and refinement statistics

Property	Value	Source
Space group	C 1 2 1	Depositor
Cell constants a, b, c, α , β , γ	90.59Å 84.34Å 99.46Å 90.00° 109.16° 90.00°	Depositor
Resolution (Å)	15.00 – 2.65 46.02 – 2.61	Depositor EDS
% Data completeness (in resolution range)	100.0 (15.00-2.65) 98.8 (46.02-2.61)	Depositor EDS
R_{merge}	0.10	Depositor
R_{sym}	(Not available)	Depositor
$\langle I/\sigma(I) \rangle$ ¹	2.11 (at 2.61Å)	Xtriage
Refinement program	REFMAC 5.2.0005	Depositor
R, R_{free}	0.239 , 0.291 0.247 , 0.296	Depositor DCC
R_{free} test set	1054 reflections (5.40%)	DCC
Wilson B-factor (Å ²)	63.3	Xtriage
Anisotropy	0.149	Xtriage
Bulk solvent k_{sol} (e/Å ³), B_{sol} (Å ²)	0.31 , 48.4	EDS
Estimated twinning fraction	No twinning to report.	Xtriage
L-test for twinning ²	$\langle L \rangle = 0.50$, $\langle L^2 \rangle = 0.33$	Xtriage
Outliers	0 of 21460 reflections	Xtriage
F_o, F_c correlation	0.91	EDS
Total number of atoms	4558	wwPDB-VP
Average B, all atoms (Å ²)	59.0	wwPDB-VP

Xtriage's analysis on translational NCS is as follows: *The largest off-origin peak in the Patterson function is 6.03% of the height of the origin peak. No significant pseudotranslation is detected.*

¹Intensities estimated from amplitudes.

²Theoretical values of $\langle |L| \rangle$, $\langle L^2 \rangle$ for acentric reflections are 0.5, 0.375 respectively for untwinned datasets, and 0.333, 0.2 for perfectly twinned datasets.

5 Model quality

5.1 Standard geometry

Bond lengths and bond angles in the following residue types are not validated in this section: OES, SR

The Z score for a bond length (or angle) is the number of standard deviations the observed value is removed from the expected value. A bond length (or angle) with $|Z| > 5$ is considered an outlier worth inspection. RMSZ is the root-mean-square of all Z scores of the bond lengths (or angles).

Mol	Chain	Bond lengths		Bond angles	
		RMSZ	$\# Z > 5$	RMSZ	$\# Z > 5$
1	A	0.47	0/4599	0.64	0/6226

There are no bond length outliers.

There are no bond angle outliers.

There are no chirality outliers.

There are no planarity outliers.

5.2 Too-close contacts

In the following table, the Non-H and H(model) columns list the number of non-hydrogen atoms and hydrogen atoms in the chain respectively. The H(added) column lists the number of hydrogen atoms added and optimized by MolProbity. The Clashes column lists the number of clashes within the asymmetric unit, whereas Symm-Clashes lists symmetry related clashes.

Mol	Chain	Non-H	H(model)	H(added)	Clashes	Symm-Clashes
1	A	4513	0	4179	76	0
2	A	1	0	0	0	0
3	A	26	0	44	0	0
4	A	18	0	0	0	0
All	All	4558	0	4223	76	0

The all-atom clashscore is defined as the number of clashes found per 1000 atoms (including hydrogen atoms). The all-atom clashscore for this structure is 9.

All (76) close contacts within the same asymmetric unit are listed below, sorted by their clash magnitude.

Atom-1	Atom-2	Interatomic distance (Å)	Clash overlap (Å)
1:A:63:PRO:HB2	1:A:64:VAL:HA	1.46	0.95
1:A:501:GLN:HB2	1:A:502:ASN:HB2	1.50	0.93
1:A:212:LYS:HB3	1:A:213:ASP:HA	1.54	0.87
1:A:462:MSE:HE1	1:A:470:GLY:HA2	1.59	0.84
1:A:501:GLN:N	1:A:502:ASN:HB3	1.92	0.84
1:A:82:GLU:HA	1:A:84:ASP:H	1.45	0.81
1:A:501:GLN:HB2	1:A:502:ASN:CB	2.14	0.78
1:A:179:ASP:O	1:A:213:ASP:HB2	1.86	0.76
1:A:291:GLU:OE1	1:A:293:LYS:HE2	1.89	0.72
1:A:274:ARG:HG3	1:A:299:VAL:HG22	1.74	0.69
1:A:420:ALA:HA	1:A:449:PRO:HB3	1.78	0.66
1:A:82:GLU:CA	1:A:84:ASP:H	2.09	0.66
1:A:501:GLN:CA	1:A:502:ASN:HB3	2.27	0.65
1:A:229:ILE:HD13	1:A:229:ILE:H	1.62	0.64
1:A:82:GLU:HA	1:A:84:ASP:N	2.14	0.63
1:A:63:PRO:HB2	1:A:64:VAL:CA	2.26	0.62
1:A:625:LYS:O	1:A:662:ARG:NH1	2.33	0.62
1:A:63:PRO:CB	1:A:64:VAL:HA	2.24	0.61
1:A:563:LYS:HB2	1:A:564:PRO:HD2	1.86	0.57
1:A:582:LEU:O	1:A:583:ALA:HB3	2.07	0.54
1:A:477:VAL:HG22	1:A:531:VAL:HG12	1.91	0.53
1:A:62:LYS:CG	1:A:63:PRO:HD2	2.38	0.52
1:A:501:GLN:CB	1:A:502:ASN:CB	2.88	0.51
1:A:72:LYS:HB2	1:A:79:LEU:HD11	1.93	0.51
1:A:510:ALA:H	1:A:511:ASN:CB	2.23	0.50
1:A:593:GLY:HA2	1:A:614:ILE:O	2.12	0.50
1:A:554:GLY:HA3	1:A:568:LEU:HD13	1.92	0.50
1:A:63:PRO:CB	1:A:64:VAL:CA	2.88	0.50
1:A:501:GLN:CA	1:A:502:ASN:CB	2.90	0.49
1:A:384:MSE:HG3	1:A:394:TRP:CZ2	2.46	0.49
1:A:90:SER:HB3	1:A:95:ASP:HA	1.94	0.49
1:A:75:PRO:O	1:A:137:ARG:HD3	2.13	0.49
1:A:100:LEU:HD13	1:A:147:ASP:HB3	1.95	0.48
1:A:124:TRP:CG	1:A:125:ILE:N	2.82	0.48
1:A:124:TRP:N	1:A:124:TRP:CE3	2.81	0.48
1:A:300:GLU:HG3	1:A:311:THR:HG22	1.95	0.47
1:A:316:THR:HG23	1:A:339:ARG:HG2	1.95	0.47
1:A:124:TRP:HE3	1:A:124:TRP:N	2.13	0.47
1:A:84:ASP:HA	1:A:85:ASN:HA	1.52	0.47
1:A:126:PRO:HB2	1:A:187:GLN:OE1	2.15	0.47
1:A:171:ASP:OD1	1:A:185:ASN:HB3	2.15	0.46
1:A:103:VAL:O	1:A:106:LYS:HE3	2.15	0.46

Continued on next page...

Continued from previous page...

Atom-1	Atom-2	Interatomic distance (Å)	Clash overlap (Å)
1:A:435:CYS:C	1:A:437:GLY:H	2.19	0.46
1:A:575:GLY:O	1:A:592:SER:HA	2.16	0.45
1:A:525:LYS:HG3	1:A:557:VAL:HG23	1.99	0.45
1:A:42:GLN:OE1	1:A:48:PRO:HD2	2.17	0.45
1:A:462:MSE:CE	1:A:470:GLY:HA2	2.41	0.45
1:A:431:THR:HG21	1:A:440:LYS:HD3	1.97	0.45
1:A:178:ARG:HA	1:A:178:ARG:HH11	1.82	0.44
1:A:62:LYS:HG3	1:A:63:PRO:HD2	1.99	0.44
1:A:303:ASN:HA	1:A:304:PRO:HD2	1.87	0.44
1:A:111:ARG:HA	1:A:111:ARG:HD3	1.74	0.44
1:A:556:ASP:HB3	1:A:563:LYS:HG2	2.00	0.44
1:A:510:ALA:N	1:A:511:ASN:CB	2.81	0.44
1:A:582:LEU:O	1:A:583:ALA:CB	2.66	0.43
1:A:475:VAL:HG22	1:A:533:THR:HG22	1.99	0.43
1:A:212:LYS:HB3	1:A:213:ASP:CA	2.37	0.42
1:A:251:PHE:HA	1:A:280:SER:O	2.19	0.42
1:A:164:TRP:CD2	1:A:192:GLY:HA3	2.55	0.42
1:A:164:TRP:CD1	1:A:193:PRO:HD2	2.55	0.42
1:A:442:VAL:O	1:A:519:SER:HA	2.21	0.41
1:A:127:VAL:HA	1:A:130:ILE:HD12	2.01	0.41
1:A:181:GLY:HA3	1:A:211:GLU:O	2.21	0.41
1:A:441:ILE:HB	1:A:488:ILE:HD11	2.03	0.41
1:A:548:ASN:O	1:A:573:ALA:HA	2.21	0.41
1:A:82:GLU:CB	1:A:84:ASP:H	2.34	0.41
1:A:438:ALA:O	1:A:516:PRO:HD2	2.21	0.41
1:A:626[A]:ASP:HA	1:A:662:ARG:HD3	2.02	0.41
1:A:448:LYS:H	1:A:448:LYS:HG2	1.70	0.41
1:A:294:TYR:CD2	1:A:294:TYR:C	2.94	0.41
1:A:576:THR:HG22	1:A:592:SER:CB	2.51	0.40
1:A:178:ARG:NH1	1:A:178:ARG:HA	2.36	0.40
1:A:102:LEU:HD13	1:A:105:GLY:HA2	2.03	0.40
1:A:54:ILE:HB	1:A:133:ILE:HB	2.03	0.40
1:A:626[B]:ASP:HA	1:A:662:ARG:HD3	2.03	0.40
1:A:472:GLU:HB3	1:A:536:LYS:HB2	2.03	0.40

There are no symmetry-related clashes.

5.3 Torsion angles

5.3.1 Protein backbone

In the following table, the Percentiles column shows the percent Ramachandran outliers of the chain as a percentile score with respect to all X-ray entries followed by that with respect to entries of similar resolution.

The Analysed column shows the number of residues for which the backbone conformation was analysed, and the total number of residues.

Mol	Chain	Analysed	Favoured	Allowed	Outliers	Percentiles	
1	A	570/639 (89%)	522 (92%)	34 (6%)	14 (2%)	7	15

All (14) Ramachandran outliers are listed below:

Mol	Chain	Res	Type
1	A	63	PRO
1	A	113	ALA
1	A	264	SER
1	A	502	ASN
1	A	511	ASN
1	A	566	SER
1	A	567	ASP
1	A	212	LYS
1	A	269	LYS
1	A	84	ASP
1	A	388	GLU
1	A	583	ALA
1	A	359	ALA
1	A	389	THR

5.3.2 Protein sidechains

In the following table, the Percentiles column shows the percent sidechain outliers of the chain as a percentile score with respect to all X-ray entries followed by that with respect to entries of similar resolution.

The Analysed column shows the number of residues for which the sidechain conformation was analysed, and the total number of residues.

Mol	Chain	Analysed	Rotameric	Outliers	Percentiles	
1	A	467/538 (87%)	432 (92%)	35 (8%)	17	35

All (35) residues with a non-rotameric sidechain are listed below:

Mol	Chain	Res	Type
1	A	32	THR
1	A	57	GLU
1	A	61	ARG
1	A	63	PRO
1	A	64	VAL
1	A	69	ASP
1	A	95	ASP
1	A	107	ARG
1	A	111	ARG
1	A	124	TRP
1	A	125	ILE
1	A	131	GLU
1	A	137	ARG
1	A	149	LEU
1	A	159	LYS
1	A	175	GLN
1	A	228	ARG
1	A	229	ILE
1	A	234	SER
1	A	239	VAL
1	A	272	LEU
1	A	277	TYR
1	A	343	MSE
1	A	358	SER
1	A	383	ARG
1	A	395	SER
1	A	407	THR
1	A	442	VAL
1	A	451	THR
1	A	490	ARG
1	A	541	ASP
1	A	546	SER
1	A	570	PHE
1	A	650	GLU
1	A	662	ARG

Some sidechains can be flipped to improve hydrogen bonding and reduce clashes. All (2) such sidechains are listed below:

Mol	Chain	Res	Type
1	A	85	ASN
1	A	552	ASN

5.3.3 RNA [i](#)

There are no RNA molecules in this entry.

5.4 Non-standard residues in protein, DNA, RNA chains [i](#)

There are no non-standard protein/DNA/RNA residues in this entry.

5.5 Carbohydrates [i](#)

There are no carbohydrates in this entry.

5.6 Ligand geometry [i](#)

Of 3 ligands modelled in this entry, 1 is monoatomic - leaving 2 for Mogul analysis.

In the following table, the Counts columns list the number of bonds (or angles) for which Mogul statistics could be retrieved, the number of bonds (or angles) that are observed in the model and the number of bonds (or angles) that are defined in the chemical component dictionary. The Link column lists molecule types, if any, to which the group is linked. The Z score for a bond length (or angle) is the number of standard deviations the observed value is removed from the expected value. A bond length (or angle) with $|Z| > 2$ is considered an outlier worth inspection. RMSZ is the root-mean-square of all Z scores of the bond lengths (or angles).

Mol	Type	Chain	Res	Link	Bond lengths			Bond angles		
					Counts	RMSZ	$\# Z > 2$	Counts	RMSZ	$\# Z > 2$
3	OES	A	21	-	12,12,12	2.93	2 (16%)	11,12,12	1.89	2 (18%)
3	OES	A	22	-	12,12,12	2.70	1 (8%)	11,12,12	1.77	2 (18%)

In the following table, the Chirals column lists the number of chiral outliers, the number of chiral centers analysed, the number of these observed in the model and the number defined in the chemical component dictionary. Similar counts are reported in the Torsion and Rings columns. '-' means no outliers of that kind were identified.

Mol	Type	Chain	Res	Link	Chirals	Torsions	Rings
3	OES	A	21	-	-	0/11/11/11	0/0/0/0
3	OES	A	22	-	-	0/11/11/11	0/0/0/0

All (3) bond length outliers are listed below:

Mol	Chain	Res	Type	Atoms	Z	Observed(Å)	Ideal(Å)
3	A	21	OES	C7-C6	3.60	1.72	1.51

Continued on next page...

Continued from previous page...

Mol	Chain	Res	Type	Atoms	Z	Observed(Å)	Ideal(Å)
3	A	22	OES	O2-S2	9.19	1.80	1.50
3	A	21	OES	O2-S2	9.22	1.80	1.50

All (4) bond angle outliers are listed below:

Mol	Chain	Res	Type	Atoms	Z	Observed(°)	Ideal(°)
3	A	22	OES	O2-S2-C8	-2.38	100.84	105.62
3	A	21	OES	O2-S2-C8	-2.27	101.05	105.62
3	A	21	OES	C22-S2-C8	4.83	107.80	97.23
3	A	22	OES	C22-S2-C8	4.94	108.04	97.23

There are no chirality outliers.

There are no torsion outliers.

There are no ring outliers.

No monomer is involved in short contacts.

5.7 Other polymers [i](#)

There are no such residues in this entry.

5.8 Polymer linkage issues [i](#)

There are no chain breaks in this entry.

6 Fit of model and data ⓘ

6.1 Protein, DNA and RNA chains ⓘ

In the following table, the column labelled ‘#RSRZ> 2’ contains the number (and percentage) of RSRZ outliers, followed by percent RSRZ outliers for the chain as percentile scores relative to all X-ray entries and entries of similar resolution. The OWAB column contains the minimum, median, 95th percentile and maximum values of the occupancy-weighted average B-factor per residue. The column labelled ‘Q< 0.9’ lists the number of (and percentage) of residues with an average occupancy less than 0.9.

Mol	Chain	Analysed	<RSRZ>	#RSRZ>2	OWAB(Å ²)	Q<0.9
1	A	574/639 (89%)	0.50	37 (6%) 23 20	30, 55, 88, 105	0

All (37) RSRZ outliers are listed below:

Mol	Chain	Res	Type	RSRZ
1	A	610	GLY	6.3
1	A	346	ALA	6.2
1	A	268	ASP	5.4
1	A	264	SER	4.7
1	A	611	GLY	4.0
1	A	568	LEU	4.0
1	A	504	VAL	3.9
1	A	355	SER	3.8
1	A	569	PRO	3.7
1	A	84	ASP	3.6
1	A	112	ASN	3.5
1	A	111	ARG	3.5
1	A	265	ASP	3.4
1	A	406	ASP	3.4
1	A	497	ALA	3.3
1	A	345	ASP	3.1
1	A	582	LEU	2.9
1	A	559	ASN	2.9
1	A	347	VAL	2.9
1	A	503	PHE	2.8
1	A	491	THR	2.7
1	A	585	GLU	2.7
1	A	304	PRO	2.6
1	A	584	LEU	2.5
1	A	511	ASN	2.5
1	A	287	TYR	2.5
1	A	490	ARG	2.4

Continued on next page...

Continued from previous page...

Mol	Chain	Res	Type	RSRZ
1	A	641	LEU	2.4
1	A	184[A]	TYR	2.3
1	A	500	TYR	2.3
1	A	344	SER	2.3
1	A	30	GLY	2.3
1	A	418	PHE	2.2
1	A	430	TRP	2.2
1	A	340	HIS	2.1
1	A	662	ARG	2.1
1	A	496	ALA	2.0

6.2 Non-standard residues in protein, DNA, RNA chains [i](#)

There are no non-standard protein/DNA/RNA residues in this entry.

6.3 Carbohydrates [i](#)

There are no carbohydrates in this entry.

6.4 Ligands [i](#)

In the following table, the Atoms column lists the number of modelled atoms in the group and the number defined in the chemical component dictionary. LLDF column lists the quality of electron density of the group with respect to its neighbouring residues in protein, DNA or RNA chains. The B-factors column lists the minimum, median, 95th percentile and maximum values of B factors of atoms in the group. The column labelled 'Q< 0.9' lists the number of atoms with occupancy less than 0.9.

Mol	Type	Chain	Res	Atoms	RSCC	RSR	LLDF	B-factors(\AA^2)	Q<0.9
3	OES	A	21	13/13	0.71	0.19	-0.75	87,101,110,111	0
2	SR	A	23	1/1	0.95	0.07	-4.16	109,109,109,109	0
3	OES	A	22	13/13	0.69	0.34	-	77,96,109,111	0

6.5 Other polymers [i](#)

There are no such residues in this entry.