



wwPDB X-ray Structure Validation Summary Report ⓘ

Sep 20, 2016 – 11:35 PM EDT

PDB ID : 5HJR
Title : Murine endoplasmic reticulum alpha-glucosidase II with bound covalent intermediate
Authors : Caputo, A.T.; Roversi, P.; Alonzi, D.S.; Kiappes, J.L.; Zitzmann, N.
Deposited on : 2016-01-13
Resolution : 2.40 Å(reported)

This is a wwPDB X-ray Structure Validation Summary Report for a publicly released PDB entry.

We welcome your comments at validation@mail.wwpdb.org

A user guide is available at

<http://wwpdb.org/validation/2016/XrayValidationReportHelp>

with specific help available everywhere you see the ⓘ symbol.

The following versions of software and data (see [references ⓘ](#)) were used in the production of this report:

MolProbity : 4.02b-467
Mogul : 1.7.1 (RC1), CSD as537be (2016)
Xtriage (Phenix) : 1.9-1692
EDS : rb-20027939
Percentile statistics : 20151230.v01 (using entries in the PDB archive December 30th 2015)
Refmac : 5.8.0135
CCP4 : 6.5.0
Ideal geometry (proteins) : Engh & Huber (2001)
Ideal geometry (DNA, RNA) : Parkinson et al. (1996)
Validation Pipeline (wwPDB-VP) : rb-20027939

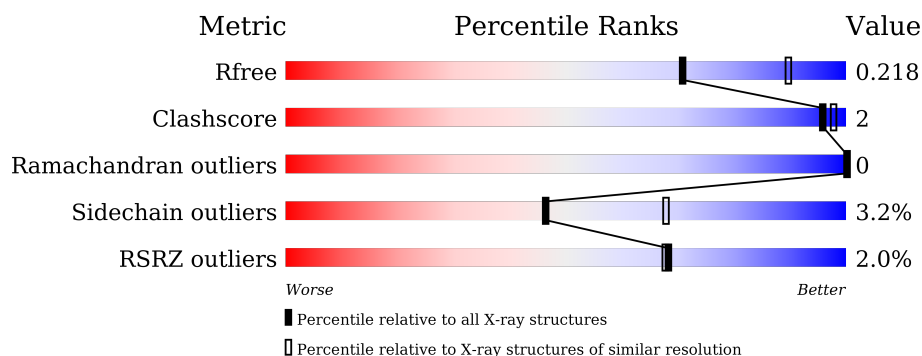
1 Overall quality at a glance

The following experimental techniques were used to determine the structure:

X-RAY DIFFRACTION

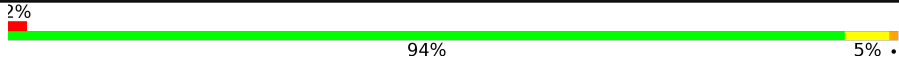
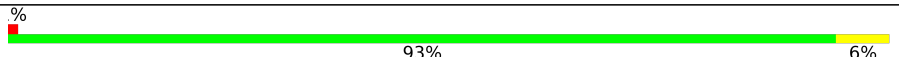
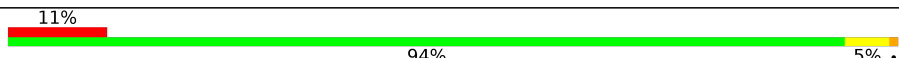
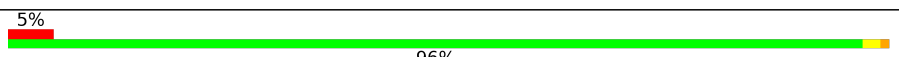
The reported resolution of this entry is 2.40 Å.

Percentile scores (ranging between 0-100) for global validation metrics of the entry are shown in the following graphic. The table shows the number of entries on which the scores are based.



Metric	Whole archive (#Entries)	Similar resolution (#Entries, resolution range(Å))
R_{free}	91344	2919 (2.40-2.40)
Clashscore	102246	3407 (2.40-2.40)
Ramachandran outliers	100387	3351 (2.40-2.40)
Sidechain outliers	100360	3352 (2.40-2.40)
RSRZ outliers	91569	2928 (2.40-2.40)

The table below summarises the geometric issues observed across the polymeric chains and their fit to the electron density. The red, orange, yellow and green segments on the lower bar indicate the fraction of residues that contain outliers for ≥ 3 , 2, 1 and 0 types of geometric quality criteria. A grey segment represents the fraction of residues that are not modelled. The numeric value for each fraction is indicated below the corresponding segment, with a dot representing fractions $\leq 5\%$. The upper red bar (where present) indicates the fraction of residues that have poor fit to the electron density. The numeric value is given above the bar.

Mol	Chain	Length	Quality of chain
1	A	857	
1	C	857	
2	B	83	
2	D	83	

The following table lists non-polymeric compounds, carbohydrate monomers and non-standard residues in protein, DNA, RNA chains that are outliers for geometric or electron-density-fit crite-

ria:

Mol	Type	Chain	Res	Chirality	Geometry	Clashes	Electron density
10	OXM	A	1024	-	-	-	X
10	OXM	C	1025	-	-	-	X
10	OXM	C	1028	-	-	-	X
11	TAR	A	1025	-	-	-	X
6	EDO	A	1005	-	-	-	X
6	EDO	A	1006	-	-	-	X
6	EDO	C	1007	-	-	X	X
6	EDO	C	1008	-	-	-	X
6	EDO	C	1009	-	-	-	X
7	FMT	A	1008	-	-	-	X
7	FMT	A	1012	-	-	-	X
7	FMT	A	1013	-	-	-	X
7	FMT	A	1014	-	-	-	X
7	FMT	A	1016	-	-	-	X
7	FMT	A	1019	-	-	-	X
7	FMT	A	1027	-	-	-	X
7	FMT	C	1012	-	-	-	X
7	FMT	C	1013	-	-	-	X
7	FMT	C	1014	-	-	-	X
7	FMT	C	1017	-	-	-	X
7	FMT	C	1018	-	-	-	X
7	FMT	C	1020	-	-	-	X
7	FMT	C	1022	-	-	-	X
7	FMT	D	201	-	-	-	X
9	P6G	A	1023	-	-	-	X
9	P6G	C	1024	-	-	-	X

2 Entry composition

There are 13 unique types of molecules in this entry. The entry contains 30463 atoms, of which 14634 are hydrogens and 0 are deuteriums.

In the tables below, the ZeroOcc column contains the number of atoms modelled with zero occupancy, the AltConf column contains the number of residues with at least one atom in alternate conformation and the Trace column contains the number of residues modelled with at most 2 atoms.

- Molecule 1 is a protein called Neutral alpha-glucosidase AB.

Mol	Chain	Residues	Atoms						ZeroOcc	AltConf	Trace
1	A	855	Total	C	H	N	O	S	0	3	0
			13555	4430	6637	1201	1259	28			
1	C	854	Total	C	H	N	O	S	1	4	0
			13567	4430	6653	1198	1258	28			

There are 198 discrepancies between the modelled and reference sequences:

Chain	Residue	Modelled	Actual	Comment	Reference
A	?	-	VAL	deletion	UNP Q8BHN3
A	?	-	PRO	deletion	UNP Q8BHN3
A	?	-	PHE	deletion	UNP Q8BHN3
A	?	-	SER	deletion	UNP Q8BHN3
A	?	-	ASP	deletion	UNP Q8BHN3
A	?	-	LYS	deletion	UNP Q8BHN3
A	?	-	VAL	deletion	UNP Q8BHN3
A	?	-	SER	deletion	UNP Q8BHN3
A	?	-	LEU	deletion	UNP Q8BHN3
A	?	-	ALA	deletion	UNP Q8BHN3
A	?	-	LEU	deletion	UNP Q8BHN3
A	?	-	GLY	deletion	UNP Q8BHN3
A	?	-	SER	deletion	UNP Q8BHN3
A	?	-	VAL	deletion	UNP Q8BHN3
A	?	-	TRP	deletion	UNP Q8BHN3
A	?	-	ASP	deletion	UNP Q8BHN3
A	?	-	LYS	deletion	UNP Q8BHN3
A	?	-	ILE	deletion	UNP Q8BHN3
A	?	-	LYS	deletion	UNP Q8BHN3
A	?	-	ASN	deletion	UNP Q8BHN3
A	?	-	LEU	deletion	UNP Q8BHN3
A	?	-	PHE	deletion	UNP Q8BHN3
A	?	-	SER	deletion	UNP Q8BHN3
A	?	-	ARG	deletion	UNP Q8BHN3
A	?	-	GLN	deletion	UNP Q8BHN3

Continued on next page...

Continued from previous page...

Chain	Residue	Modelled	Actual	Comment	Reference
A	?	-	GLU	deletion	UNP Q8BHN3
A	?	-	SER	deletion	UNP Q8BHN3
A	?	-	LYS	deletion	UNP Q8BHN3
A	?	-	ASP	deletion	UNP Q8BHN3
A	?	-	PRO	deletion	UNP Q8BHN3
A	?	-	ALA	deletion	UNP Q8BHN3
A	?	-	GLU	deletion	UNP Q8BHN3
A	?	-	GLY	deletion	UNP Q8BHN3
A	?	-	ASN	deletion	UNP Q8BHN3
A	?	-	GLY	deletion	UNP Q8BHN3
A	?	-	ALA	deletion	UNP Q8BHN3
A	?	-	GLN	deletion	UNP Q8BHN3
A	?	-	PRO	deletion	UNP Q8BHN3
A	?	-	GLU	deletion	UNP Q8BHN3
A	?	-	ALA	deletion	UNP Q8BHN3
A	?	-	THR	deletion	UNP Q8BHN3
A	?	-	PRO	deletion	UNP Q8BHN3
A	?	-	GLY	deletion	UNP Q8BHN3
A	?	-	ASP	deletion	UNP Q8BHN3
A	?	-	GLY	deletion	UNP Q8BHN3
A	?	-	ASP	deletion	UNP Q8BHN3
A	?	-	LYS	deletion	UNP Q8BHN3
A	?	-	PRO	deletion	UNP Q8BHN3
A	?	-	GLU	deletion	UNP Q8BHN3
A	?	-	GLU	deletion	UNP Q8BHN3
A	?	-	THR	deletion	UNP Q8BHN3
A	?	-	GLN	deletion	UNP Q8BHN3
A	?	-	GLU	deletion	UNP Q8BHN3
A	?	-	LYS	deletion	UNP Q8BHN3
A	?	-	ALA	deletion	UNP Q8BHN3
A	?	-	GLU	deletion	UNP Q8BHN3
A	?	-	LYS	deletion	UNP Q8BHN3
A	?	-	ASP	deletion	UNP Q8BHN3
A	?	-	THR	deletion	UNP Q8BHN3
A	?	-	ALA	deletion	UNP Q8BHN3
A	?	-	GLY	deletion	UNP Q8BHN3
A	?	-	LYS	deletion	UNP Q8BHN3
A	?	-	THR	deletion	UNP Q8BHN3
A	?	-	LEU	deletion	UNP Q8BHN3
A	?	-	PHE	deletion	UNP Q8BHN3
A	?	-	GLY	deletion	UNP Q8BHN3
A	?	-	LYS	deletion	UNP Q8BHN3

Continued on next page...

Continued from previous page...

Chain	Residue	Modelled	Actual	Comment	Reference
A	?	-	MET	deletion	UNP Q8BHN3
A	?	-	LEU	deletion	UNP Q8BHN3
A	?	-	ASP	deletion	UNP Q8BHN3
A	?	-	TYR	deletion	UNP Q8BHN3
A	?	-	LEU	deletion	UNP Q8BHN3
A	?	-	GLN	deletion	UNP Q8BHN3
A	?	-	GLY	deletion	UNP Q8BHN3
A	?	-	SER	deletion	UNP Q8BHN3
A	?	-	GLY	deletion	UNP Q8BHN3
A	?	-	GLU	deletion	UNP Q8BHN3
A	945	THR	-	expression tag	UNP Q8BHN3
A	946	SER	-	expression tag	UNP Q8BHN3
A	947	VAL	-	expression tag	UNP Q8BHN3
A	948	LEU	-	expression tag	UNP Q8BHN3
A	949	ILE	-	expression tag	UNP Q8BHN3
A	950	LEU	-	expression tag	UNP Q8BHN3
A	951	ARG	-	expression tag	UNP Q8BHN3
A	952	LYS	-	expression tag	UNP Q8BHN3
A	953	PRO	-	expression tag	UNP Q8BHN3
A	954	GLY	-	expression tag	UNP Q8BHN3
A	955	VAL	-	expression tag	UNP Q8BHN3
A	956	SER	-	expression tag	UNP Q8BHN3
A	957	VAL	-	expression tag	UNP Q8BHN3
A	958	ALA	-	expression tag	UNP Q8BHN3
A	959	SER	-	expression tag	UNP Q8BHN3
A	960	ASP	-	expression tag	UNP Q8BHN3
A	961	TRP	-	expression tag	UNP Q8BHN3
A	962	SER	-	expression tag	UNP Q8BHN3
A	963	ILE	-	expression tag	UNP Q8BHN3
A	964	HIS	-	expression tag	UNP Q8BHN3
A	965	LEU	-	expression tag	UNP Q8BHN3
A	966	ARG	-	expression tag	UNP Q8BHN3
C	?	-	VAL	deletion	UNP Q8BHN3
C	?	-	PRO	deletion	UNP Q8BHN3
C	?	-	PHE	deletion	UNP Q8BHN3
C	?	-	SER	deletion	UNP Q8BHN3
C	?	-	ASP	deletion	UNP Q8BHN3
C	?	-	LYS	deletion	UNP Q8BHN3
C	?	-	VAL	deletion	UNP Q8BHN3
C	?	-	SER	deletion	UNP Q8BHN3
C	?	-	LEU	deletion	UNP Q8BHN3
C	?	-	ALA	deletion	UNP Q8BHN3

Continued on next page...

Continued from previous page...

Chain	Residue	Modelled	Actual	Comment	Reference
C	?	-	LEU	deletion	UNP Q8BHN3
C	?	-	GLY	deletion	UNP Q8BHN3
C	?	-	SER	deletion	UNP Q8BHN3
C	?	-	VAL	deletion	UNP Q8BHN3
C	?	-	TRP	deletion	UNP Q8BHN3
C	?	-	ASP	deletion	UNP Q8BHN3
C	?	-	LYS	deletion	UNP Q8BHN3
C	?	-	ILE	deletion	UNP Q8BHN3
C	?	-	LYS	deletion	UNP Q8BHN3
C	?	-	ASN	deletion	UNP Q8BHN3
C	?	-	LEU	deletion	UNP Q8BHN3
C	?	-	PHE	deletion	UNP Q8BHN3
C	?	-	SER	deletion	UNP Q8BHN3
C	?	-	ARG	deletion	UNP Q8BHN3
C	?	-	GLN	deletion	UNP Q8BHN3
C	?	-	GLU	deletion	UNP Q8BHN3
C	?	-	SER	deletion	UNP Q8BHN3
C	?	-	LYS	deletion	UNP Q8BHN3
C	?	-	ASP	deletion	UNP Q8BHN3
C	?	-	PRO	deletion	UNP Q8BHN3
C	?	-	ALA	deletion	UNP Q8BHN3
C	?	-	GLU	deletion	UNP Q8BHN3
C	?	-	GLY	deletion	UNP Q8BHN3
C	?	-	ASN	deletion	UNP Q8BHN3
C	?	-	GLY	deletion	UNP Q8BHN3
C	?	-	ALA	deletion	UNP Q8BHN3
C	?	-	GLN	deletion	UNP Q8BHN3
C	?	-	PRO	deletion	UNP Q8BHN3
C	?	-	GLU	deletion	UNP Q8BHN3
C	?	-	ALA	deletion	UNP Q8BHN3
C	?	-	THR	deletion	UNP Q8BHN3
C	?	-	PRO	deletion	UNP Q8BHN3
C	?	-	GLY	deletion	UNP Q8BHN3
C	?	-	ASP	deletion	UNP Q8BHN3
C	?	-	GLY	deletion	UNP Q8BHN3
C	?	-	ASP	deletion	UNP Q8BHN3
C	?	-	LYS	deletion	UNP Q8BHN3
C	?	-	PRO	deletion	UNP Q8BHN3
C	?	-	GLU	deletion	UNP Q8BHN3
C	?	-	GLU	deletion	UNP Q8BHN3
C	?	-	THR	deletion	UNP Q8BHN3
C	?	-	GLN	deletion	UNP Q8BHN3

Continued on next page...

Continued from previous page...

Chain	Residue	Modelled	Actual	Comment	Reference
C	?	-	GLU	deletion	UNP Q8BHN3
C	?	-	LYS	deletion	UNP Q8BHN3
C	?	-	ALA	deletion	UNP Q8BHN3
C	?	-	GLU	deletion	UNP Q8BHN3
C	?	-	LYS	deletion	UNP Q8BHN3
C	?	-	ASP	deletion	UNP Q8BHN3
C	?	-	THR	deletion	UNP Q8BHN3
C	?	-	ALA	deletion	UNP Q8BHN3
C	?	-	GLY	deletion	UNP Q8BHN3
C	?	-	LYS	deletion	UNP Q8BHN3
C	?	-	THR	deletion	UNP Q8BHN3
C	?	-	LEU	deletion	UNP Q8BHN3
C	?	-	PHE	deletion	UNP Q8BHN3
C	?	-	GLY	deletion	UNP Q8BHN3
C	?	-	LYS	deletion	UNP Q8BHN3
C	?	-	MET	deletion	UNP Q8BHN3
C	?	-	LEU	deletion	UNP Q8BHN3
C	?	-	ASP	deletion	UNP Q8BHN3
C	?	-	TYR	deletion	UNP Q8BHN3
C	?	-	LEU	deletion	UNP Q8BHN3
C	?	-	GLN	deletion	UNP Q8BHN3
C	?	-	GLY	deletion	UNP Q8BHN3
C	?	-	SER	deletion	UNP Q8BHN3
C	?	-	GLY	deletion	UNP Q8BHN3
C	?	-	GLU	deletion	UNP Q8BHN3
C	945	THR	-	expression tag	UNP Q8BHN3
C	946	SER	-	expression tag	UNP Q8BHN3
C	947	VAL	-	expression tag	UNP Q8BHN3
C	948	LEU	-	expression tag	UNP Q8BHN3
C	949	ILE	-	expression tag	UNP Q8BHN3
C	950	LEU	-	expression tag	UNP Q8BHN3
C	951	ARG	-	expression tag	UNP Q8BHN3
C	952	LYS	-	expression tag	UNP Q8BHN3
C	953	PRO	-	expression tag	UNP Q8BHN3
C	954	GLY	-	expression tag	UNP Q8BHN3
C	955	VAL	-	expression tag	UNP Q8BHN3
C	956	SER	-	expression tag	UNP Q8BHN3
C	957	VAL	-	expression tag	UNP Q8BHN3
C	958	ALA	-	expression tag	UNP Q8BHN3
C	959	SER	-	expression tag	UNP Q8BHN3
C	960	ASP	-	expression tag	UNP Q8BHN3
C	961	TRP	-	expression tag	UNP Q8BHN3

Continued on next page...

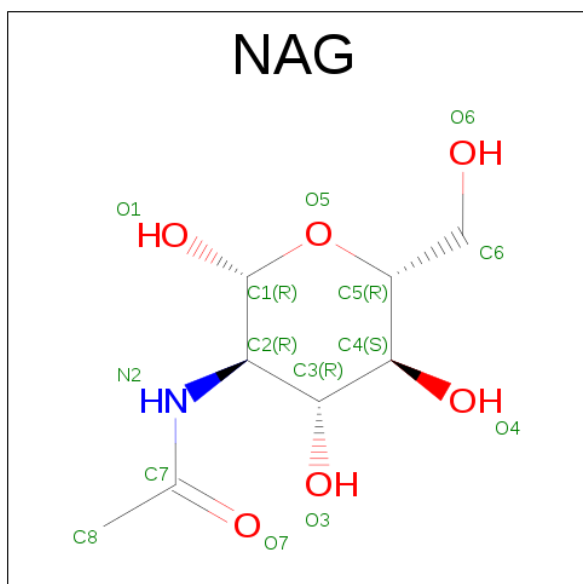
Continued from previous page...

Chain	Residue	Modelled	Actual	Comment	Reference
C	962	SER	-	expression tag	UNP Q8BHN3
C	963	ILE	-	expression tag	UNP Q8BHN3
C	964	HIS	-	expression tag	UNP Q8BHN3
C	965	LEU	-	expression tag	UNP Q8BHN3
C	966	ARG	-	expression tag	UNP Q8BHN3

- Molecule 2 is a protein called Glucosidase 2 subunit beta.

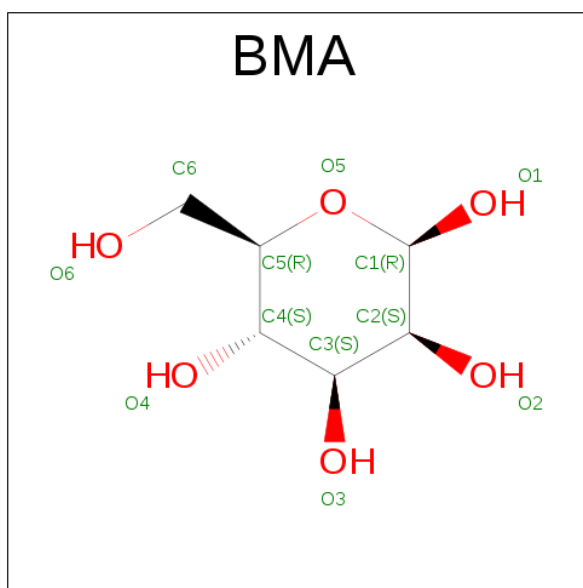
Mol	Chain	Residues	Atoms						ZeroOcc	AltConf	Trace
2	B	83	Total	C	H	N	O	S	0	0	0
			1151	368	535	101	137	10			
2	D	83	Total	C	H	N	O	S	0	0	0
			1149	368	533	101	137	10			

- Molecule 3 is N-ACETYL-D-GLUCOSAMINE (three-letter code: NAG) (formula: $C_8H_{15}NO_6$).



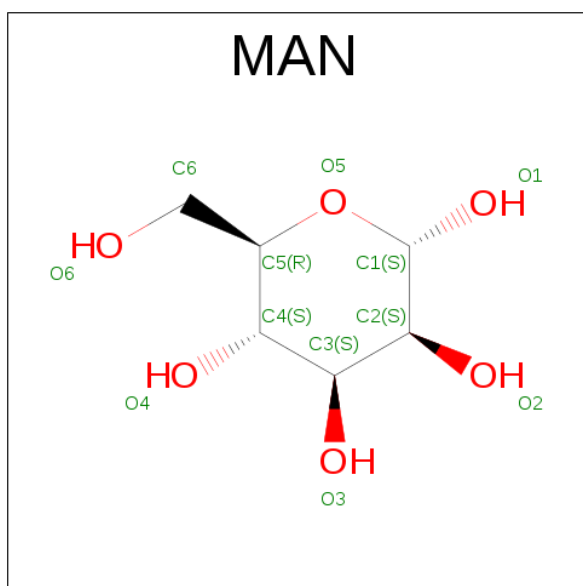
Mol	Chain	Residues	Atoms					ZeroOcc	AltConf
3	A	1	Total	C	H	N	O	0	0
			26	8	12	1	5		
3	A	1	Total	C	H	N	O	0	0
			26	8	12	1	5		
3	C	1	Total	C	H	N	O	0	0
			26	8	12	1	5		
3	C	1	Total	C	H	N	O	0	0
			26	8	12	1	5		

- Molecule 4 is BETA-D-MANNOSE (three-letter code: BMA) (formula: $C_6H_{12}O_6$).



Mol	Chain	Residues	Atoms				ZeroOcc	AltConf
4	A	1	Total	C	H	O	0	0
			20	6	9	5		
4	C	1	Total	C	H	O	0	0
			19	6	8	5		

- Molecule 5 is ALPHA-D-MANNOSE (three-letter code: MAN) (formula: $C_6H_{12}O_6$).



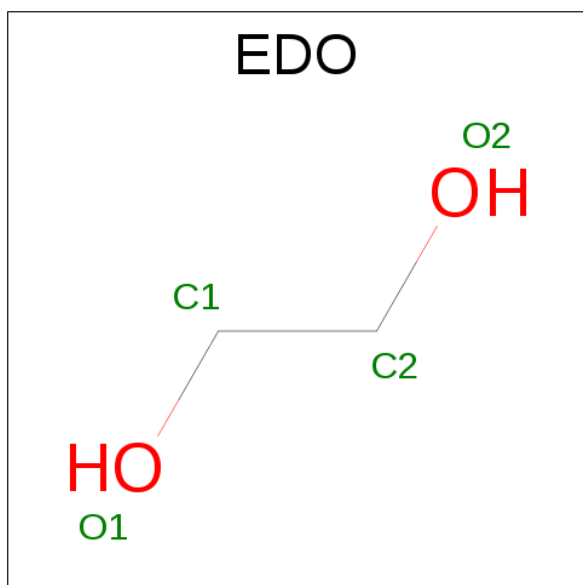
Mol	Chain	Residues	Atoms				ZeroOcc	AltConf
5	A	1	Total	C	H	O	0	0
			21	6	10	5		

Continued on next page...

Continued from previous page...

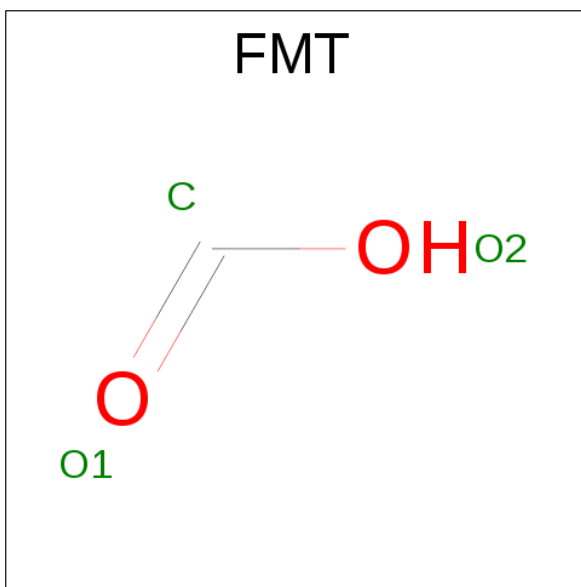
Mol	Chain	Residues	Atoms				ZeroOcc	AltConf
5	C	1	Total	C	H	O	0	0
			21	6	10	5		
5	C	1	Total	C	H	O	0	0
			21	6	10	5		

- Molecule 6 is 1,2-ETHANEDIOL (three-letter code: EDO) (formula: C₂H₆O₂).



Mol	Chain	Residues	Atoms				ZeroOcc	AltConf
6	A	1	Total	C	H	O	0	0
			10	2	6	2		
6	A	1	Total	C	H	O	0	0
			10	2	6	2		
6	A	1	Total	C	H	O	0	0
			10	2	6	2		
6	C	1	Total	C	H	O	0	0
			10	2	6	2		
6	C	1	Total	C	H	O	0	0
			10	2	6	2		
6	C	1	Total	C	H	O	0	0
			10	2	6	2		
6	C	1	Total	C	H	O	0	0
			10	2	6	2		

- Molecule 7 is FORMIC ACID (three-letter code: FMT) (formula: CH₂O₂).



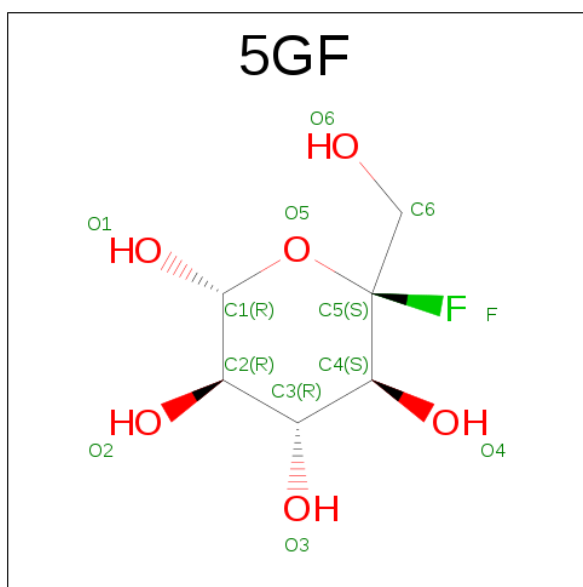
Mol	Chain	Residues	Atoms				ZeroOcc	AltConf
7	A	1	Total	C	H	O	0	0
			5	1	2	2		
7	A	1	Total	C	H	O	0	0
			4	1	1	2		
7	A	1	Total	C	H	O	0	0
			5	1	2	2		
7	A	1	Total	C	H	O	0	0
			5	1	2	2		
7	A	1	Total	C	H	O	0	0
			4	1	1	2		
7	A	1	Total	C	H	O	0	0
			5	1	2	2		
7	A	1	Total	C	H	O	0	0
			4	1	1	2		
7	A	1	Total	C	H	O	0	0
			5	1	2	2		
7	A	1	Total	C	H	O	0	0
			4	1	1	2		
7	A	1	Total	C	H	O	0	0
			4	1	1	2		
7	A	1	Total	C	H	O	0	0
			5	1	2	2		

Continued on next page...

Continued from previous page...

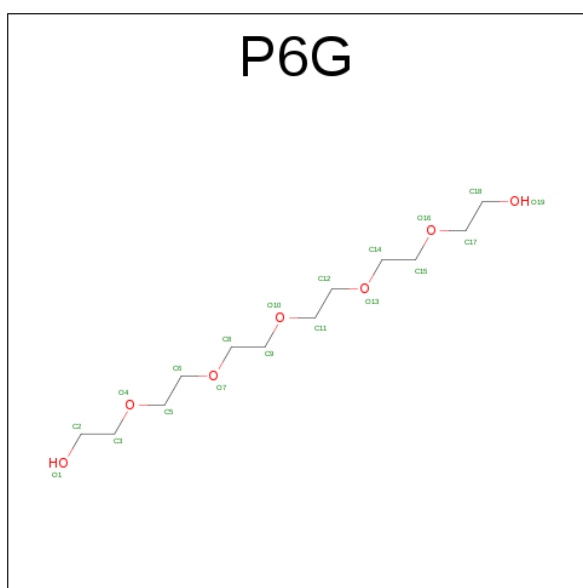
Mol	Chain	Residues	Atoms				ZeroOcc	AltConf
7	A	1	Total 5	C 1	H 2	O 2	0	0
7	A	1	Total 5	C 1	H 2	O 2	0	0
7	B	1	Total 4	C 1	H 1	O 2	0	0
7	C	1	Total 5	C 1	H 2	O 2	0	0
7	C	1	Total 5	C 1	H 2	O 2	0	0
7	C	1	Total 4	C 1	H 1	O 2	0	0
7	C	1	Total 4	C 1	H 1	O 2	0	0
7	C	1	Total 5	C 1	H 2	O 2	0	0
7	C	1	Total 5	C 1	H 2	O 2	0	0
7	C	1	Total 4	C 1	H 1	O 2	0	0
7	C	1	Total 4	C 1	H 1	O 2	0	0
7	C	1	Total 5	C 1	H 2	O 2	0	0
7	C	1	Total 4	C 1	H 1	O 2	0	0
7	C	1	Total 4	C 1	H 1	O 2	0	0
7	C	1	Total 5	C 1	H 2	O 2	0	0
7	C	1	Total 4	C 1	H 1	O 2	0	0
7	C	1	Total 4	C 1	H 1	O 2	0	0
7	C	1	Total 5	C 1	H 2	O 2	0	0
7	C	1	Total 5	C 1	H 2	O 2	0	0
7	D	1	Total 4	C 1	H 1	O 2	0	0

- Molecule 8 is 5-FLUORO-BETA-D-GLUCOPYRANOSE (three-letter code: 5GF) (formula: C₆H₁₁FO₆).



Mol	Chain	Residues	Atoms					ZeroOcc	AltConf
8	A	1	Total	C	F	H	O	0	0
			22	6	1	10	5		
8	C	1	Total	C	F	H	O	0	0
			22	6	1	10	5		

- Molecule 9 is HEXAETHYLENE GLYCOL (three-letter code: P6G) (formula: $C_{12}H_{26}O_7$).



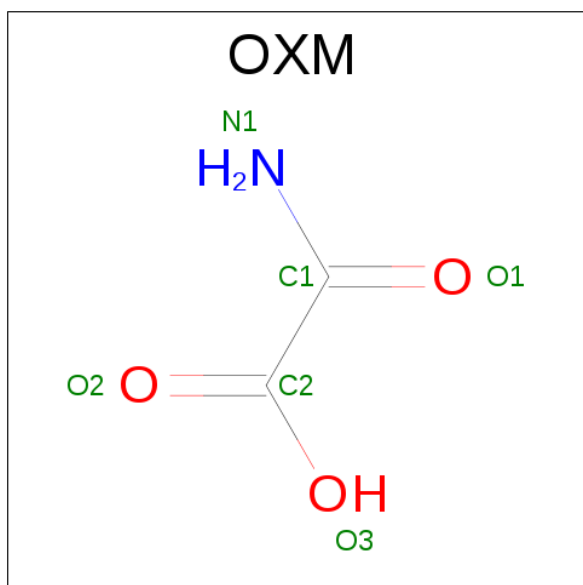
Mol	Chain	Residues	Atoms				ZeroOcc	AltConf
9	A	1	Total	C	H	O	0	0
			26	7	15	4		
9	A	1	Total	C	H	O	0	0
			30	9	16	5		

Continued on next page...

Continued from previous page...

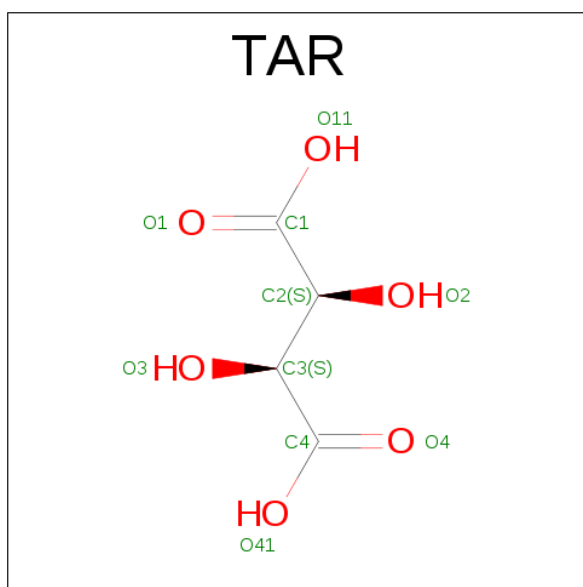
Mol	Chain	Residues	Atoms				ZeroOcc	AltConf
9	C	1	Total	C	H	O	0	0
			30	9	16	5		
9	C	1	Total	C	H	O	0	0
			26	7	15	4		

- Molecule 10 is OXAMIC ACID (three-letter code: OXM) (formula: $C_2H_3NO_3$).



Mol	Chain	Residues	Atoms					ZeroOcc	AltConf
10	A	1	Total	C	H	N	O	0	0
			8	2	2	1	3		
10	C	1	Total	C	H	N	O	0	0
			8	2	2	1	3		
10	C	1	Total	C	H	N	O	0	0
			8	2	2	1	3		

- Molecule 11 is D(-)-TARTARIC ACID (three-letter code: TAR) (formula: $C_4H_6O_6$).



Mol	Chain	Residues	Atoms				ZeroOcc	AltConf
11	A	1	Total	C	H	O	0	0
			14	4	4	6		

- Molecule 12 is CALCIUM ION (three-letter code: CA) (formula: Ca).

Mol	Chain	Residues	Atoms		ZeroOcc	AltConf
12	B	2	Total	Ca	0	0
			2	2		
12	D	2	Total	Ca	0	0
			2	2		

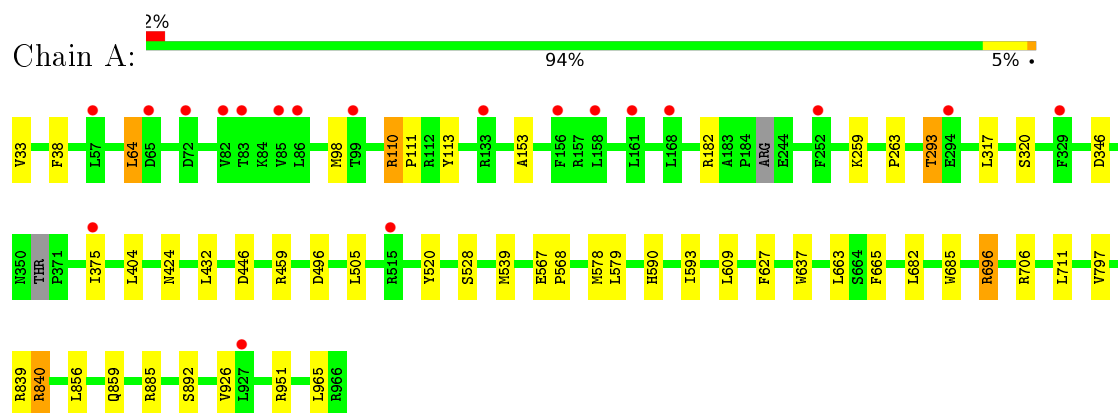
- Molecule 13 is water.

Mol	Chain	Residues	Atoms		ZeroOcc	AltConf
13	A	178	Total	O	0	0
			178	178		
13	B	13	Total	O	0	0
			13	13		
13	C	223	Total	O	0	0
			223	223		
13	D	10	Total	O	0	0
			10	10		

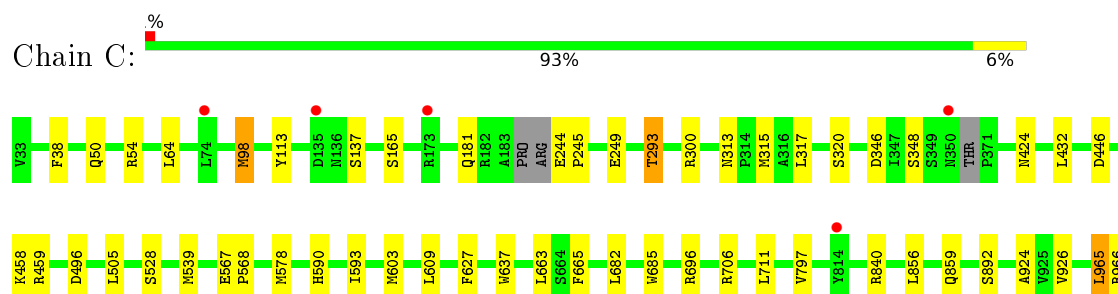
3 Residue-property plots [i](#)

These plots are drawn for all protein, RNA and DNA chains in the entry. The first graphic for a chain summarises the proportions of errors displayed in the second graphic. The second graphic shows the sequence view annotated by issues in geometry and electron density. Residues are color-coded according to the number of geometric quality criteria for which they contain at least one outlier: green = 0, yellow = 1, orange = 2 and red = 3 or more. A red dot above a residue indicates a poor fit to the electron density ($\text{RSRZ} > 2$). Stretches of 2 or more consecutive residues without any outlier are shown as a green connector. Residues present in the sample, but not in the model, are shown in grey.

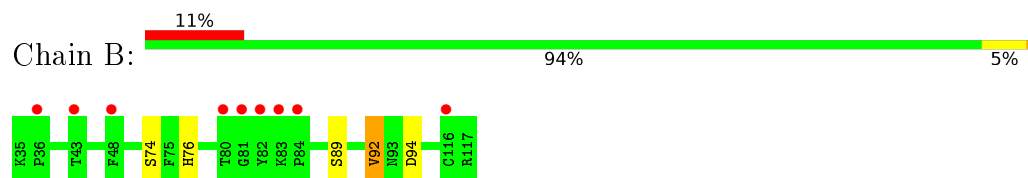
• Molecule 1: Neutral alpha-glucosidase AB



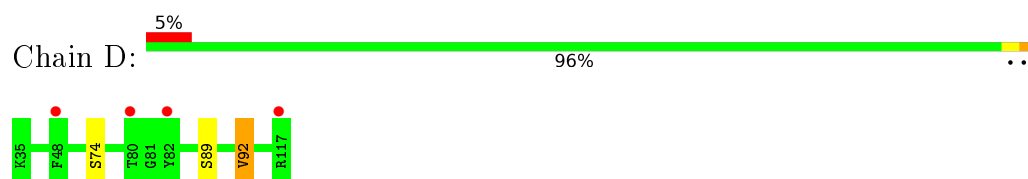
• Molecule 1: Neutral alpha-glucosidase AB



• Molecule 2: Glucosidase 2 subunit beta



• Molecule 2: Glucosidase 2 subunit beta



4 Data and refinement statistics

Property	Value	Source
Space group	P 1 21 1	Depositor
Cell constants a, b, c, α , β , γ	103.51Å 174.66Å 63.71Å 90.00° 91.31° 90.00°	Depositor
Resolution (Å)	103.48 – 2.40 103.48 – 2.40	Depositor EDS
% Data completeness (in resolution range)	98.9 (103.48-2.40) 98.9 (103.48-2.40)	Depositor EDS
R_{merge}	(Not available)	Depositor
R_{sym}	0.25	Depositor
$\langle I/\sigma(I) \rangle$ ¹	1.71 (at 2.40Å)	Xtriage
Refinement program	BUSTER 2.10.2	Depositor
R, R_{free}	0.177 , 0.202 0.192 , 0.218	Depositor DCC
R_{free} test set	4409 reflections (5.32%)	DCC
Wilson B-factor (Å ²)	46.7	Xtriage
Anisotropy	0.332	Xtriage
Bulk solvent k_{sol} (e/Å ³), B_{sol} (Å ²)	0.39 , 56.6	EDS
L-test for twinning ²	$\langle L \rangle = 0.47$, $\langle L^2 \rangle = 0.30$	Xtriage
Estimated twinning fraction	0.044 for -h,-k,l	Xtriage
F_o, F_c correlation	0.95	EDS
Total number of atoms	30463	wwPDB-VP
Average B, all atoms (Å ²)	59.0	wwPDB-VP

Xtriage's analysis on translational NCS is as follows: *The largest off-origin peak in the Patterson function is 3.63% of the height of the origin peak. No significant pseudotranslation is detected.*

¹Intensities estimated from amplitudes.

²Theoretical values of $\langle |L| \rangle$, $\langle L^2 \rangle$ for acentric reflections are 0.5, 0.333 respectively for untwinned datasets, and 0.375, 0.2 for perfectly twinned datasets.

5 Model quality [i](#)

5.1 Standard geometry [i](#)

Bond lengths and bond angles in the following residue types are not validated in this section: BMA, NAG, TAR, FMT, EDO, 5GF, OXM, P6G, CA, MAN

The Z score for a bond length (or angle) is the number of standard deviations the observed value is removed from the expected value. A bond length (or angle) with $|Z| > 5$ is considered an outlier worth inspection. RMSZ is the root-mean-square of all Z scores of the bond lengths (or angles).

Mol	Chain	Bond lengths		Bond angles	
		RMSZ	# Z >5	RMSZ	# Z >5
1	A	0.47	1/7139 (0.0%)	0.72	5/9715 (0.1%)
1	C	0.52	2/7140 (0.0%)	0.70	0/9717
2	B	0.48	0/628	0.76	0/854
2	D	0.52	0/628	0.69	0/854
All	All	0.50	3/15535 (0.0%)	0.71	5/21140 (0.0%)

Chiral center outliers are detected by calculating the chiral volume of a chiral center and verifying if the center is modelled as a planar moiety or with the opposite hand. A planarity outlier is detected by checking planarity of atoms in a peptide group, atoms in a mainchain group or atoms of a sidechain that are expected to be planar.

Mol	Chain	#Chirality outliers	#Planarity outliers
2	B	0	1

All (3) bond length outliers are listed below:

Mol	Chain	Res	Type	Atoms	Z	Observed(Å)	Ideal(Å)
1	C	603	MET	SD-CE	-7.67	1.34	1.77
1	C	98	MET	SD-CE	-5.36	1.47	1.77
1	A	375	ILE	CG1-CD1	-5.19	1.14	1.50

All (5) bond angle outliers are listed below:

Mol	Chain	Res	Type	Atoms	Z	Observed(°)	Ideal(°)
1	A	696	ARG	CG-CD-NE	10.51	133.87	111.80
1	A	840	ARG	CG-CD-NE	10.38	133.60	111.80
1	A	885	ARG	CG-CD-NE	10.22	133.27	111.80
1	A	951	ARG	CD-NE-CZ	5.30	131.01	123.60
1	A	839	ARG	CD-NE-CZ	5.20	130.88	123.60

There are no chirality outliers.

All (1) planarity outliers are listed below:

Mol	Chain	Res	Type	Group
2	B	76	HIS	Sidechain

5.2 Too-close contacts ⓘ

In the following table, the Non-H and H(model) columns list the number of non-hydrogen atoms and hydrogen atoms in the chain respectively. The H(added) column lists the number of hydrogen atoms added and optimized by MolProbity. The Clashes column lists the number of clashes within the asymmetric unit, whereas Symm-Clashes lists symmetry related clashes.

Mol	Chain	Non-H	H(model)	H(added)	Clashes	Symm-Clashes
1	A	6918	6637	6672	24	0
1	C	6914	6653	6659	20	0
2	B	616	535	533	2	0
2	D	616	533	533	1	0
3	A	28	24	24	0	0
3	C	28	24	24	0	0
4	A	11	9	9	0	0
4	C	11	8	8	0	0
5	A	11	10	10	0	0
5	C	22	20	20	0	0
6	A	12	18	18	2	0
6	C	16	24	24	6	0
7	A	48	24	25	0	0
7	B	3	1	2	0	0
7	C	42	21	22	0	0
7	D	3	1	1	0	0
8	A	12	10	9	0	0
8	C	12	10	9	0	0
9	A	25	31	29	0	0
9	C	25	31	29	0	0
10	A	6	2	2	0	0
10	C	12	4	4	0	0
11	A	10	4	4	0	0
12	B	2	0	0	0	0
12	D	2	0	0	0	0
13	A	178	0	0	0	0
13	B	13	0	0	0	0
13	C	223	0	0	0	0
13	D	10	0	0	0	0
All	All	15829	14634	14670	46	0

The all-atom clashscore is defined as the number of clashes found per 1000 atoms (including hydrogen atoms). The all-atom clashscore for this structure is 2.

The worst 5 of 46 close contacts within the same asymmetric unit are listed below, sorted by their clash magnitude.

Atom-1	Atom-2	Interatomic distance (Å)	Clash overlap (Å)
1:C:505:LEU:HD22	1:C:539:MET:HE1	1.69	0.74
1:A:98:MET:HE3	1:A:404:LEU:HD11	1.69	0.72
1:C:313:ASN:OD1	6:C:1009:EDO:H12	1.90	0.72
1:A:505:LEU:HD22	1:A:539:MET:HE1	1.73	0.70
1:A:293:THR:CG2	1:A:346:ASP:OD1	2.40	0.70

There are no symmetry-related clashes.

5.3 Torsion angles [i](#)

5.3.1 Protein backbone [i](#)

In the following table, the Percentiles column shows the percent Ramachandran outliers of the chain as a percentile score with respect to all X-ray entries followed by that with respect to entries of similar resolution.

The Analysed column shows the number of residues for which the backbone conformation was analysed, and the total number of residues.

Mol	Chain	Analysed	Favoured	Allowed	Outliers	Percentiles	
1	A	852/857 (99%)	830 (97%)	22 (3%)	0	100	100
1	C	852/857 (99%)	829 (97%)	23 (3%)	0	100	100
2	B	81/83 (98%)	80 (99%)	1 (1%)	0	100	100
2	D	81/83 (98%)	79 (98%)	2 (2%)	0	100	100
All	All	1866/1880 (99%)	1818 (97%)	48 (3%)	0	100	100

There are no Ramachandran outliers to report.

5.3.2 Protein sidechains [i](#)

In the following table, the Percentiles column shows the percent sidechain outliers of the chain as a percentile score with respect to all X-ray entries followed by that with respect to entries of similar resolution.

The Analysed column shows the number of residues for which the sidechain conformation was analysed, and the total number of residues.

Mol	Chain	Analysed	Rotameric	Outliers	Percentiles	
1	A	749/748 (100%)	729 (97%)	20 (3%)	52	73
1	C	748/748 (100%)	720 (96%)	28 (4%)	41	62
2	B	72/72 (100%)	70 (97%)	2 (3%)	51	72
2	D	72/72 (100%)	70 (97%)	2 (3%)	51	72
All	All	1641/1640 (100%)	1589 (97%)	52 (3%)	46	68

5 of 52 residues with a non-rotameric sidechain are listed below:

Mol	Chain	Res	Type
1	C	54	ARG
1	C	249	GLU
1	C	926	VAL
1	C	64	LEU
1	C	137	SER

Some sidechains can be flipped to improve hydrogen bonding and reduce clashes. All (2) such sidechains are listed below:

Mol	Chain	Res	Type
1	A	928	GLN
1	C	964	HIS

5.3.3 RNA [i](#)

There are no RNA molecules in this entry.

5.4 Non-standard residues in protein, DNA, RNA chains [i](#)

There are no non-standard protein/DNA/RNA residues in this entry.

5.5 Carbohydrates [i](#)

There are no carbohydrates in this entry.

5.6 Ligand geometry [i](#)

Of 62 ligands modelled in this entry, 4 are monoatomic - leaving 58 for Mogul analysis.

In the following table, the Counts columns list the number of bonds (or angles) for which Mogul statistics could be retrieved, the number of bonds (or angles) that are observed in the model and

the number of bonds (or angles) that are defined in the chemical component dictionary. The Link column lists molecule types, if any, to which the group is linked. The Z score for a bond length (or angle) is the number of standard deviations the observed value is removed from the expected value. A bond length (or angle) with $|Z| > 2$ is considered an outlier worth inspection. RMSZ is the root-mean-square of all Z scores of the bond lengths (or angles).

Mol	Type	Chain	Res	Link	Bond lengths			Bond angles		
					Counts	RMSZ	$\# Z > 2$	Counts	RMSZ	$\# Z > 2$
3	NAG	A	1001	1,3	14,14,15	0.26	0	15,19,21	0.60	0
3	NAG	A	1002	3,4	14,14,15	0.31	0	15,19,21	0.42	0
4	BMA	A	1003	3,5	11,11,12	0.28	0	15,15,17	0.61	0
5	MAN	A	1004	4	11,11,12	0.29	0	15,15,17	0.63	0
6	EDO	A	1005	-	3,3,3	0.52	0	2,2,2	0.21	0
6	EDO	A	1006	-	3,3,3	0.31	0	2,2,2	0.47	0
7	FMT	A	1007	-	2,2,2	1.31	0	1,1,1	1.56	0
7	FMT	A	1008	-	0,2,2	0.00	-	0,1,1	0.00	-
7	FMT	A	1009	-	2,2,2	1.40	0	1,1,1	1.53	0
7	FMT	A	1010	-	2,2,2	1.20	0	1,1,1	1.76	0
7	FMT	A	1011	-	0,2,2	0.00	-	0,1,1	0.00	-
7	FMT	A	1012	-	2,2,2	1.15	0	1,1,1	1.58	0
7	FMT	A	1013	-	0,2,2	0.00	-	0,1,1	0.00	-
7	FMT	A	1014	-	2,2,2	1.78	1 (50%)	1,1,1	1.12	0
7	FMT	A	1015	-	0,2,2	0.00	-	0,1,1	0.00	-
7	FMT	A	1016	-	0,2,2	0.00	-	0,1,1	0.00	-
7	FMT	A	1017	-	0,2,2	0.00	-	0,1,1	0.00	-
7	FMT	A	1018	-	0,2,2	0.00	-	0,1,1	0.00	-
7	FMT	A	1019	-	0,2,2	0.00	-	0,1,1	0.00	-
7	FMT	A	1020	-	2,2,2	1.38	0	1,1,1	1.45	0
8	5GF	A	1021	-	12,12,13	0.93	1 (8%)	14,18,20	2.28	6 (42%)
7	FMT	A	1022	-	2,2,2	1.35	0	1,1,1	1.50	0
9	P6G	A	1023	-	10,10,18	0.38	0	9,9,17	0.62	0
10	OXM	A	1024	-	2,5,5	0.36	0	2,6,6	0.50	0
11	TAR	A	1025	-	3,9,9	0.31	0	6,12,12	0.81	0
6	EDO	A	1026	-	3,3,3	0.74	0	2,2,2	0.08	0
7	FMT	A	1027	-	2,2,2	1.06	0	1,1,1	1.46	0
9	P6G	A	1028	-	13,13,18	0.28	0	12,12,17	0.37	0
7	FMT	B	201	-	0,2,2	0.00	-	0,1,1	0.00	-
7	FMT	C	1001	-	2,2,2	1.11	0	1,1,1	1.70	0
3	NAG	C	1002	1,3	14,14,15	0.25	0	15,19,21	0.59	0
3	NAG	C	1003	3,4	14,14,15	0.30	0	15,19,21	0.42	0
4	BMA	C	1004	3,5	11,11,12	0.26	0	15,15,17	0.62	0
5	MAN	C	1005	4	11,11,12	0.29	0	15,15,17	0.65	0
5	MAN	C	1006	4	11,11,12	0.42	0	15,15,17	0.84	1 (6%)
6	EDO	C	1007	-	3,3,3	0.53	0	2,2,2	0.20	0
6	EDO	C	1008	-	3,3,3	0.60	0	2,2,2	0.50	0

Mol	Type	Chain	Res	Link	Bond lengths			Bond angles		
					Counts	RMSZ	# Z > 2	Counts	RMSZ	# Z > 2
6	EDO	C	1009	-	3,3,3	0.85	0	2,2,2	0.35	0
7	FMT	C	1010	-	2,2,2	1.08	0	1,1,1	2.31	1 (100%)
7	FMT	C	1011	-	0,2,2	0.00	-	0,1,1	0.00	-
7	FMT	C	1012	-	0,2,2	0.00	-	0,1,1	0.00	-
7	FMT	C	1013	-	2,2,2	1.01	0	1,1,1	1.73	0
7	FMT	C	1014	-	2,2,2	1.69	1 (50%)	1,1,1	1.45	0
7	FMT	C	1015	-	0,2,2	0.00	-	0,1,1	0.00	-
7	FMT	C	1016	-	0,2,2	0.00	-	0,1,1	0.00	-
7	FMT	C	1017	-	2,2,2	1.60	1 (50%)	1,1,1	1.40	0
7	FMT	C	1018	-	0,2,2	0.00	-	0,1,1	0.00	-
7	FMT	C	1019	-	0,2,2	0.00	-	0,1,1	0.00	-
7	FMT	C	1020	-	0,2,2	0.00	-	0,1,1	0.00	-
7	FMT	C	1021	-	2,2,2	1.13	0	1,1,1	1.56	0
7	FMT	C	1022	-	2,2,2	1.18	0	1,1,1	1.63	0
8	5GF	C	1023	1	12,12,13	1.96	2 (16%)	14,18,20	2.17	4 (28%)
9	P6G	C	1024	-	13,13,18	0.26	0	12,12,17	0.40	0
10	OXM	C	1025	-	2,5,5	0.50	0	2,6,6	0.42	0
6	EDO	C	1026	-	3,3,3	0.51	0	2,2,2	0.48	0
9	P6G	C	1027	-	10,10,18	0.30	0	9,9,17	0.29	0
10	OXM	C	1028	-	2,5,5	0.55	0	2,6,6	0.36	0
7	FMT	D	201	-	0,2,2	0.00	-	0,1,1	0.00	-

In the following table, the Chirals column lists the number of chiral outliers, the number of chiral centers analysed, the number of these observed in the model and the number defined in the chemical component dictionary. Similar counts are reported in the Torsion and Rings columns. '-' means no outliers of that kind were identified.

Mol	Type	Chain	Res	Link	Chirals	Torsions	Rings
3	NAG	A	1001	1,3	-	0/6/23/26	0/1/1/1
3	NAG	A	1002	3,4	-	0/6/23/26	0/1/1/1
4	BMA	A	1003	3,5	-	0/2/19/22	0/1/1/1
5	MAN	A	1004	4	-	0/2/19/22	0/1/1/1
6	EDO	A	1005	-	-	0/1/1/1	0/0/0/0
6	EDO	A	1006	-	-	0/1/1/1	0/0/0/0
7	FMT	A	1007	-	-	0/0/0/0	0/0/0/0
7	FMT	A	1008	-	-	0/0/0/0	0/0/0/0
7	FMT	A	1009	-	-	0/0/0/0	0/0/0/0
7	FMT	A	1010	-	-	0/0/0/0	0/0/0/0
7	FMT	A	1011	-	-	0/0/0/0	0/0/0/0
7	FMT	A	1012	-	-	0/0/0/0	0/0/0/0
7	FMT	A	1013	-	-	0/0/0/0	0/0/0/0
7	FMT	A	1014	-	-	0/0/0/0	0/0/0/0

Continued on next page...

Continued from previous page...

Mol	Type	Chain	Res	Link	Chirals	Torsions	Rings
7	FMT	A	1015	-	-	0/0/0/0	0/0/0/0
7	FMT	A	1016	-	-	0/0/0/0	0/0/0/0
7	FMT	A	1017	-	-	0/0/0/0	0/0/0/0
7	FMT	A	1018	-	-	0/0/0/0	0/0/0/0
7	FMT	A	1019	-	-	0/0/0/0	0/0/0/0
7	FMT	A	1020	-	-	0/0/0/0	0/0/0/0
8	5GF	A	1021	-	-	0/2/23/26	0/1/1/1
7	FMT	A	1022	-	-	0/0/0/0	0/0/0/0
9	P6G	A	1023	-	-	0/8/8/16	0/0/0/0
10	OXM	A	1024	-	-	0/0/4/4	0/0/0/0
11	TAR	A	1025	-	-	0/4/12/12	0/0/0/0
6	EDO	A	1026	-	-	0/1/1/1	0/0/0/0
7	FMT	A	1027	-	-	0/0/0/0	0/0/0/0
9	P6G	A	1028	-	-	0/11/11/16	0/0/0/0
7	FMT	B	201	-	-	0/0/0/0	0/0/0/0
7	FMT	C	1001	-	-	0/0/0/0	0/0/0/0
3	NAG	C	1002	1,3	-	0/6/23/26	0/1/1/1
3	NAG	C	1003	3,4	-	0/6/23/26	0/1/1/1
4	BMA	C	1004	3,5	-	0/2/19/22	0/1/1/1
5	MAN	C	1005	4	-	0/2/19/22	0/1/1/1
5	MAN	C	1006	4	-	0/2/19/22	0/1/1/1
6	EDO	C	1007	-	-	0/1/1/1	0/0/0/0
6	EDO	C	1008	-	-	0/1/1/1	0/0/0/0
6	EDO	C	1009	-	-	0/1/1/1	0/0/0/0
7	FMT	C	1010	-	-	0/0/0/0	0/0/0/0
7	FMT	C	1011	-	-	0/0/0/0	0/0/0/0
7	FMT	C	1012	-	-	0/0/0/0	0/0/0/0
7	FMT	C	1013	-	-	0/0/0/0	0/0/0/0
7	FMT	C	1014	-	-	0/0/0/0	0/0/0/0
7	FMT	C	1015	-	-	0/0/0/0	0/0/0/0
7	FMT	C	1016	-	-	0/0/0/0	0/0/0/0
7	FMT	C	1017	-	-	0/0/0/0	0/0/0/0
7	FMT	C	1018	-	-	0/0/0/0	0/0/0/0
7	FMT	C	1019	-	-	0/0/0/0	0/0/0/0
7	FMT	C	1020	-	-	0/0/0/0	0/0/0/0
7	FMT	C	1021	-	-	0/0/0/0	0/0/0/0
7	FMT	C	1022	-	-	0/0/0/0	0/0/0/0
8	5GF	C	1023	1	-	0/2/23/26	0/1/1/1
9	P6G	C	1024	-	-	0/11/11/16	0/0/0/0
10	OXM	C	1025	-	-	0/0/4/4	0/0/0/0
6	EDO	C	1026	-	-	0/1/1/1	0/0/0/0
9	P6G	C	1027	-	-	0/8/8/16	0/0/0/0

Continued on next page...

Continued from previous page...

Mol	Type	Chain	Res	Link	Chirals	Torsions	Rings
10	OXM	C	1028	-	-	0/0/4/4	0/0/0/0
7	FMT	D	201	-	-	0/0/0/0	0/0/0/0

The worst 5 of 6 bond length outliers are listed below:

Mol	Chain	Res	Type	Atoms	Z	Observed(Å)	Ideal(Å)
7	C	1017	FMT	O2-C	2.20	1.40	1.28
7	C	1014	FMT	O2-C	2.24	1.40	1.28
8	A	1021	5GF	C6-C5	2.28	1.54	1.51
7	A	1014	FMT	O2-C	2.45	1.41	1.28
8	C	1023	5GF	C6-C5	4.24	1.58	1.51

The worst 5 of 12 bond angle outliers are listed below:

Mol	Chain	Res	Type	Atoms	Z	Observed(°)	Ideal(°)
8	A	1021	5GF	O6-C6-C5	-2.59	103.43	111.97
7	C	1010	FMT	O2-C-O1	-2.31	111.00	125.42
8	A	1021	5GF	F-C5-C4	2.10	112.79	108.95
8	A	1021	5GF	C6-C5-C4	2.14	116.17	111.77
8	A	1021	5GF	C1-C2-C3	2.29	112.33	109.55

There are no chirality outliers.

There are no torsion outliers.

There are no ring outliers.

4 monomers are involved in 8 short contacts:

Mol	Chain	Res	Type	Clashes	Symm-Clashes
6	A	1005	EDO	1	0
6	A	1006	EDO	1	0
6	C	1007	EDO	4	0
6	C	1009	EDO	2	0

5.7 Other polymers [i](#)

There are no such residues in this entry.

5.8 Polymer linkage issues [i](#)

There are no chain breaks in this entry.

6 Fit of model and data [i](#)

6.1 Protein, DNA and RNA chains [i](#)

In the following table, the column labelled ‘#RSRZ> 2’ contains the number (and percentage) of RSRZ outliers, followed by percent RSRZ outliers for the chain as percentile scores relative to all X-ray entries and entries of similar resolution. The OWAB column contains the minimum, median, 95th percentile and maximum values of the occupancy-weighted average B-factor per residue. The column labelled ‘Q< 0.9’ lists the number of (and percentage) of residues with an average occupancy less than 0.9.

Mol	Chain	Analysed	<RSRZ>	#RSRZ>2	OWAB(Å ²)	Q<0.9
1	A	855/857 (99%)	0.21	19 (2%) 65 64	37, 55, 100, 126	0
1	C	854/857 (99%)	0.07	5 (0%) 90 90	33, 50, 83, 103	0
2	B	83/83 (100%)	0.60	9 (10%) 8 8	43, 72, 114, 124	0
2	D	83/83 (100%)	0.11	4 (4%) 34 35	42, 68, 101, 122	0
All	All	1875/1880 (99%)	0.16	37 (1%) 68 68	33, 54, 95, 126	0

The worst 5 of 37 RSRZ outliers are listed below:

Mol	Chain	Res	Type	RSRZ
2	B	43	THR	7.7
2	B	81	GLY	5.5
2	D	80	THR	4.1
2	B	80	THR	3.9
1	A	72	ASP	3.8

6.2 Non-standard residues in protein, DNA, RNA chains [i](#)

There are no non-standard protein/DNA/RNA residues in this entry.

6.3 Carbohydrates [i](#)

There are no carbohydrates in this entry.

6.4 Ligands [i](#)

In the following table, the Atoms column lists the number of modelled atoms in the group and the number defined in the chemical component dictionary. LLDF column lists the quality of electron density of the group with respect to its neighbouring residues in protein, DNA or RNA chains. The B-factors column lists the minimum, median, 95th percentile and maximum values of B factors

of atoms in the group. The column labelled 'Q< 0.9' lists the number of atoms with occupancy less than 0.9.

Mol	Type	Chain	Res	Atoms	RSCC	RSR	LLDF	B-factors(\AA^2)	Q<0.9
7	FMT	A	1027	3/3	0.84	0.98	28.34	91,91,95,96	0
6	EDO	A	1005	4/4	0.85	0.62	22.86	65,68,71,72	0
7	FMT	A	1014	3/3	0.56	0.54	18.75	78,79,85,87	0
7	FMT	C	1018	3/3	0.60	0.59	18.51	88,88,89,89	0
7	FMT	C	1017	3/3	0.59	0.69	17.41	85,85,88,88	0
10	OXM	A	1024	6/6	0.75	0.39	14.35	85,86,87,87	0
6	EDO	C	1007	4/4	0.82	0.35	13.61	54,59,61,61	0
6	EDO	A	1006	4/4	0.73	0.47	13.13	59,68,70,70	0
9	P6G	A	1023	11/19	0.66	0.42	12.12	73,85,89,89	0
7	FMT	A	1012	3/3	0.71	0.47	11.05	106,107,108,109	0
6	EDO	C	1009	4/4	0.76	0.33	10.01	47,51,59,60	0
10	OXM	C	1028	6/6	0.78	0.28	9.53	74,83,86,89	0
9	P6G	C	1024	14/19	0.67	0.64	8.24	85,103,114,114	0
7	FMT	A	1016	3/3	0.71	0.37	7.49	78,81,81,81	0
7	FMT	C	1013	3/3	0.85	0.34	6.64	92,92,93,93	0
7	FMT	A	1019	3/3	0.43	0.45	6.36	78,80,80,80	0
7	FMT	C	1012	3/3	0.88	0.33	5.35	65,67,68,73	0
7	FMT	C	1022	3/3	0.90	0.25	4.89	69,70,75,79	0
11	TAR	A	1025	10/10	0.76	0.23	3.83	97,102,105,105	0
7	FMT	D	201	3/3	0.80	0.24	2.80	82,85,85,85	0
7	FMT	C	1014	3/3	0.73	0.25	2.79	75,75,78,79	0
7	FMT	A	1008	3/3	0.81	0.24	2.49	73,73,74,74	0
7	FMT	A	1013	3/3	0.50	0.28	2.35	89,91,91,92	0
6	EDO	C	1008	4/4	0.82	0.28	2.21	79,82,90,90	0
7	FMT	C	1020	3/3	0.80	0.31	2.15	82,84,85,86	0
10	OXM	C	1025	6/6	0.84	0.20	2.09	59,67,70,74	0
7	FMT	A	1020	3/3	0.88	0.18	1.71	68,68,74,76	0
12	CA	B	202	1/1	0.98	0.20	1.59	56,56,56,56	0
7	FMT	A	1017	3/3	0.68	0.24	1.43	91,93,93,94	0
12	CA	B	203	1/1	0.98	0.18	1.33	47,47,47,47	0
7	FMT	A	1011	3/3	0.78	0.28	1.33	89,89,90,90	0
9	P6G	C	1027	11/19	0.91	0.20	1.03	70,73,77,77	0
7	FMT	A	1009	3/3	0.75	0.22	0.99	81,82,85,86	0
7	FMT	C	1011	3/3	0.91	0.20	0.92	68,68,69,71	0
7	FMT	C	1015	3/3	0.83	0.19	0.67	79,79,79,80	0
12	CA	D	203	1/1	0.99	0.16	0.60	44,44,44,44	0
7	FMT	B	201	3/3	0.79	0.22	0.44	75,75,76,76	0
8	5GF	A	1021	12/13	0.97	0.15	0.38	40,48,60,67	0
7	FMT	A	1007	3/3	0.96	0.17	0.38	74,75,75,76	0
12	CA	D	202	1/1	0.99	0.14	0.38	51,51,51,51	0

Continued on next page...

Continued from previous page...

Mol	Type	Chain	Res	Atoms	RSCC	RSR	LLDF	B-factors(\AA^2)	Q<0.9
3	NAG	A	1001	14/15	0.94	0.18	0.34	66,72,79,80	0
9	P6G	A	1028	14/19	0.89	0.18	0.28	61,66,82,82	0
3	NAG	C	1002	14/15	0.96	0.16	0.07	46,53,60,64	0
6	EDO	A	1026	4/4	0.91	0.16	-0.20	61,63,69,69	0
7	FMT	C	1021	3/3	0.96	0.19	-0.35	62,63,64,64	0
7	FMT	A	1010	3/3	0.92	0.14	-0.96	63,66,71,71	0
7	FMT	C	1010	3/3	0.96	0.14	-1.28	47,49,53,54	0
8	5GF	C	1023	12/13	0.97	0.12	-1.53	40,48,54,55	0
7	FMT	A	1022	3/3	0.83	0.13	-3.60	80,80,82,83	0
7	FMT	C	1001	3/3	0.94	0.12	-4.31	72,72,74,74	0
5	MAN	A	1004	11/12	0.70	0.28	-	129,133,134,134	0
4	BMA	C	1004	11/12	0.84	0.12	-	101,111,115,117	0
7	FMT	A	1015	3/3	0.92	0.10	-	62,62,63,63	0
4	BMA	A	1003	11/12	0.78	0.14	-	114,118,120,125	0
3	NAG	C	1003	14/15	0.95	0.14	-	67,72,82,92	0
7	FMT	A	1018	3/3	0.89	0.17	-	63,64,65,65	0
7	FMT	C	1016	3/3	0.72	0.32	-	77,78,78,78	0
5	MAN	C	1006	11/12	0.62	0.28	-	114,118,120,121	0
7	FMT	C	1019	3/3	0.88	0.12	-	65,65,65,66	0
6	EDO	C	1026	4/4	0.94	0.14	-	64,64,67,67	0
5	MAN	C	1005	11/12	0.75	0.15	-	117,120,121,122	0
3	NAG	A	1002	14/15	0.92	0.17	-	84,96,99,107	0

6.5 Other polymers

There are no such residues in this entry.