



Full wwPDB X-ray Structure Validation Report ⓘ

Feb 1, 2016 – 02:43 AM GMT

PDB ID : 2IDK
Title : Crystal Structure of Rat Glycine N-Methyltransferase Complexed With Folate
Authors : Luka, Z.; Pakhomova, S.; Loukachevitch, L.V.; Egli, M.; Newcomer, M.E.; Wagner, C.
Deposited on : 2006-09-15
Resolution : 2.55 Å(reported)

This is a Full wwPDB X-ray Structure Validation Report for a publicly released PDB entry.
We welcome your comments at validation@mail.wwpdb.org
A user guide is available at
<http://wwpdb.org/validation/2016/XrayValidationReportHelp>
with specific help available everywhere you see the ⓘ symbol.

The following versions of software and data (see [references ⓘ](#)) were used in the production of this report:

MolProbity : 4.02b-467
Mogul : 1.7 (RC4), CSD as536be (2015)
Xtriage (Phenix) : 1.9-1692
EDS : rb-20026688
Percentile statistics : 20151230.v01 (using entries in the PDB archive December 30th 2015)
Refmac : 5.8.0135
CCP4 : 6.5.0
Ideal geometry (proteins) : Engh & Huber (2001)
Ideal geometry (DNA, RNA) : Parkinson et al. (1996)
Validation Pipeline (wwPDB-VP) : trunk26865

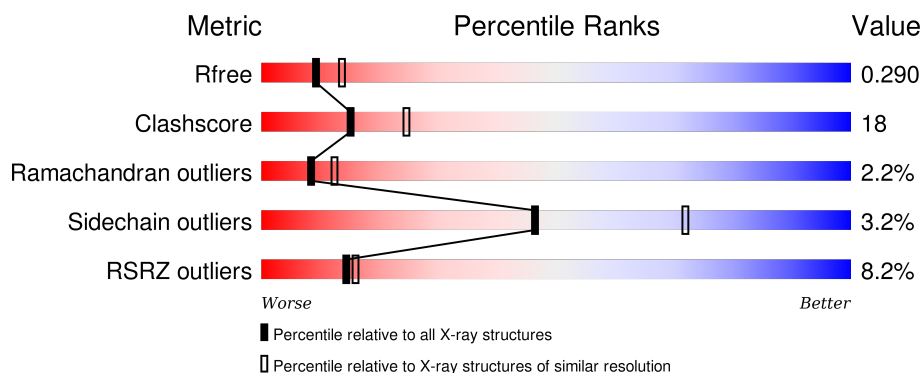
1 Overall quality at a glance

The following experimental techniques were used to determine the structure:

X-RAY DIFFRACTION

The reported resolution of this entry is 2.55 Å.

Percentile scores (ranging between 0-100) for global validation metrics of the entry are shown in the following graphic. The table shows the number of entries on which the scores are based.



Metric	Whole archive (#Entries)	Similar resolution (#Entries, resolution range(Å))
R_{free}	91344	4549 (2.58-2.50)
Clashscore	102246	5292 (2.58-2.50)
Ramachandran outliers	100387	5194 (2.58-2.50)
Sidechain outliers	100360	5196 (2.58-2.50)
RSRZ outliers	91569	4561 (2.58-2.50)

The table below summarises the geometric issues observed across the polymeric chains and their fit to the electron density. The red, orange, yellow and green segments on the lower bar indicate the fraction of residues that contain outliers for ≥ 3 , 2, 1 and 0 types of geometric quality criteria. A grey segment represents the fraction of residues that are not modelled. The numeric value for each fraction is indicated below the corresponding segment, with a dot representing fractions $\leq 5\%$. The upper red bar (where present) indicates the fraction of residues that have poor fit to the electron density. The numeric value is given above the bar.

Mol	Chain	Length	Quality of chain
1	A	292	<div> <div>11%</div> <div>60%</div> <div>34%</div> <div>5%</div> </div>
1	B	292	<div> <div>8%</div> <div>66%</div> <div>28%</div> <div>• •</div> </div>
1	C	292	<div> <div>7%</div> <div>59%</div> <div>36%</div> <div>• •</div> </div>
1	D	292	<div> <div>7%</div> <div>67%</div> <div>28%</div> <div>• •</div> </div>

The following table lists non-polymeric compounds, carbohydrate monomers and non-standard

residues in protein, DNA, RNA chains that are outliers for geometric or electron-density-fit criteria:

Mol	Type	Chain	Res	Chirality	Geometry	Clashes	Electron density
2	C2F	A	1410	-	-	X	X
2	C2F	B	1420	-	-	X	X

2 Entry composition [i](#)

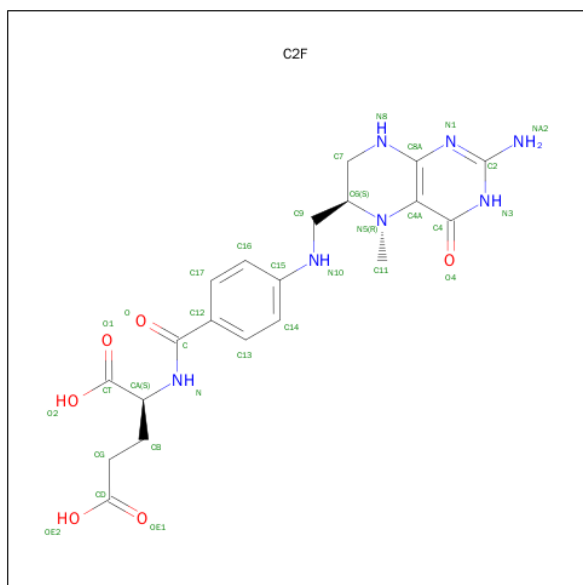
There are 3 unique types of molecules in this entry. The entry contains 8848 atoms, of which 0 are hydrogens and 0 are deuteriums.

In the tables below, the ZeroOcc column contains the number of atoms modelled with zero occupancy, the AltConf column contains the number of residues with at least one atom in alternate conformation and the Trace column contains the number of residues modelled with at most 2 atoms.

- Molecule 1 is a protein called Glycine N-methyltransferase.

Mol	Chain	Residues	Atoms					ZeroOcc	AltConf	Trace
1	A	277	Total	C	N	O	S	0	0	0
			2140	1361	372	396	11			
1	B	285	Total	C	N	O	S	0	0	0
			2219	1410	385	413	11			
1	C	281	Total	C	N	O	S	0	0	0
			2176	1385	379	401	11			
1	D	287	Total	C	N	O	S	0	0	0
			2233	1419	386	417	11			

- Molecule 2 is 5-METHYL-5,6,7,8-TETRAHYDROFOLIC ACID (three-letter code: C2F) (formula: $C_{20}H_{25}N_7O_6$).



Mol	Chain	Residues	Atoms				ZeroOcc	AltConf
2	A	1	Total	C	N	O	0	0
			33	20	7	6		
2	B	1	Total	C	N	O	0	0
			33	20	7	6		

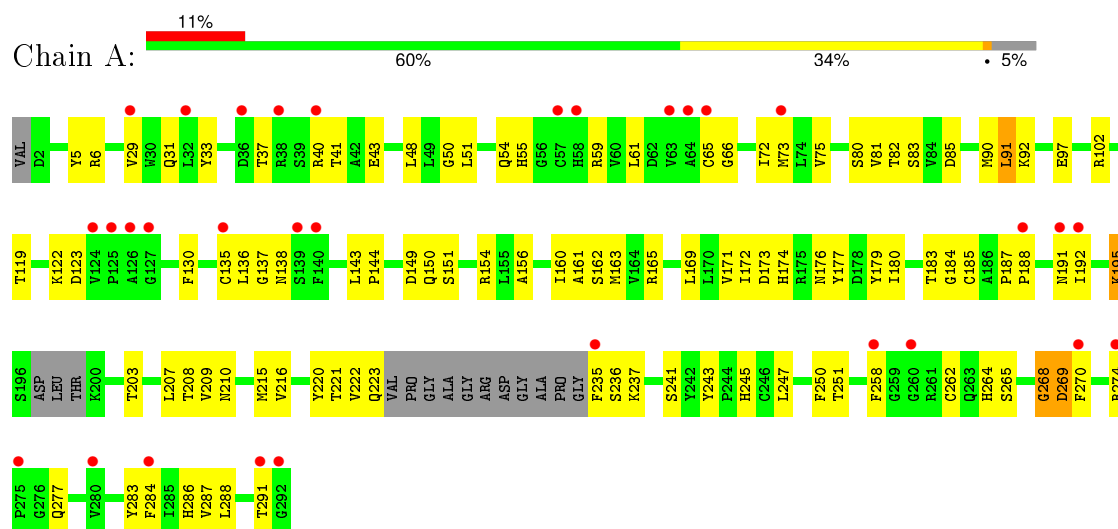
- Molecule 3 is water.

Mol	Chain	Residues	Atoms		ZeroOcc	AltConf
3	A	1	Total 1	O 1	0	0
3	B	5	Total 5	O 5	0	0
3	C	4	Total 4	O 4	0	0
3	D	4	Total 4	O 4	0	0

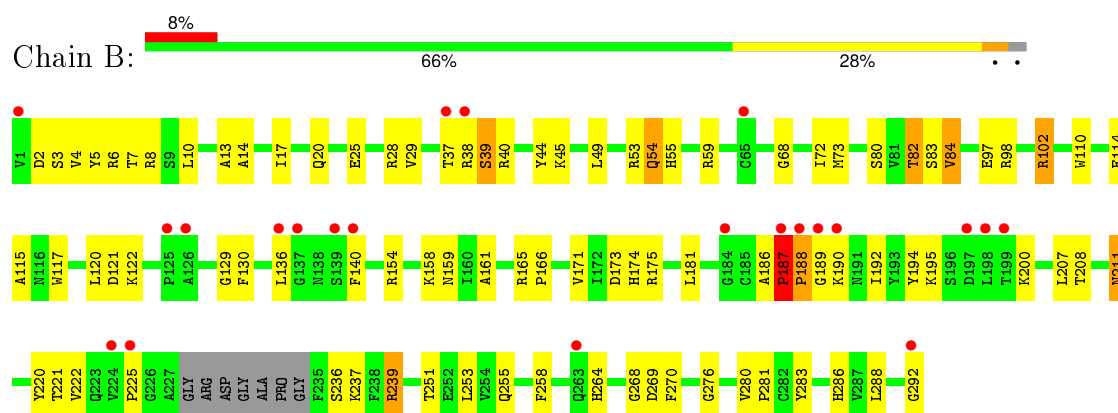
3 Residue-property plots

These plots are drawn for all protein, RNA and DNA chains in the entry. The first graphic for a chain summarises the proportions of errors displayed in the second graphic. The second graphic shows the sequence view annotated by issues in geometry and electron density. Residues are color-coded according to the number of geometric quality criteria for which they contain at least one outlier: green = 0, yellow = 1, orange = 2 and red = 3 or more. A red dot above a residue indicates a poor fit to the electron density ($RSRZ > 2$). Stretches of 2 or more consecutive residues without any outlier are shown as a green connector. Residues present in the sample, but not in the model, are shown in grey.

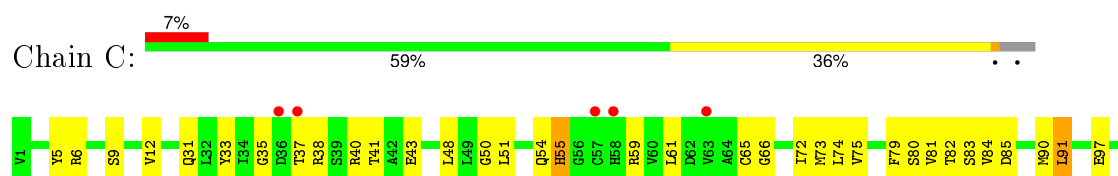
• Molecule 1: Glycine N-methyltransferase

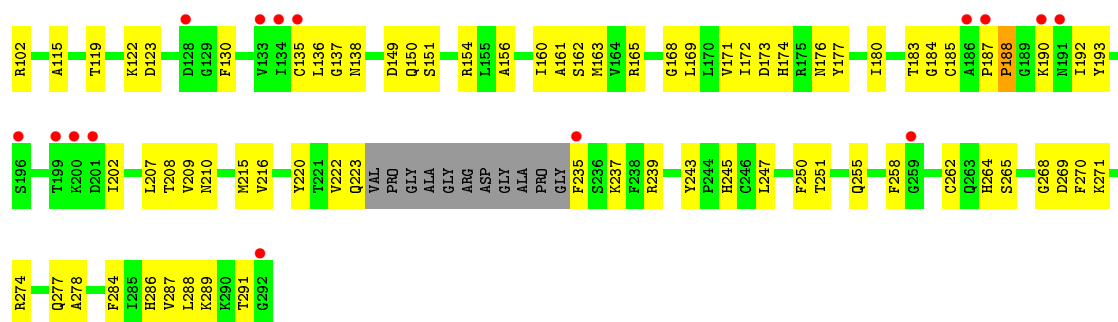


• Molecule 1: Glycine N-methyltransferase

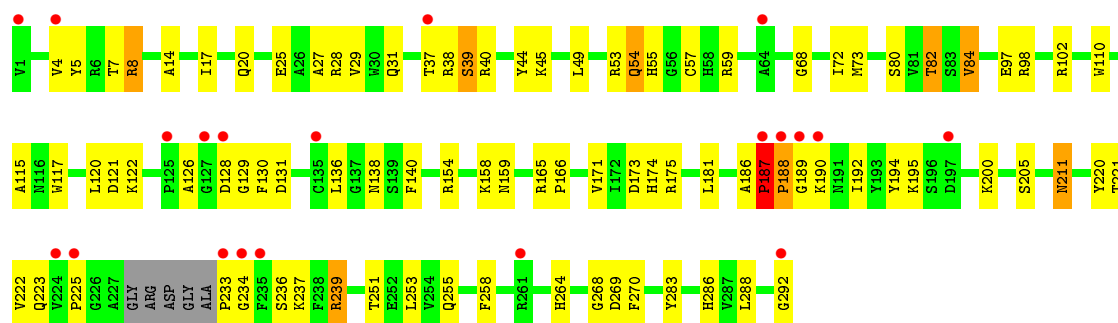


• Molecule 1: Glycine N-methyltransferase





• Molecule 1: Glycine N-methyltransferase



4 Data and refinement statistics

Property	Value	Source
Space group	P 1 21 1	Depositor
Cell constants a, b, c, α , β , γ	57.43Å 84.75Å 132.25Å 90.00° 91.61° 90.00°	Depositor
Resolution (Å)	29.00 – 2.55 29.00 – 2.56	Depositor EDS
% Data completeness (in resolution range)	88.8 (29.00-2.55) 88.9 (29.00-2.56)	Depositor EDS
R_{merge}	(Not available)	Depositor
R_{sym}	0.05	Depositor
$\langle I/\sigma(I) \rangle$ ¹	2.94 (at 2.57Å)	Xtriage
Refinement program	CNS 1.1	Depositor
R, R_{free}	0.240 , 0.298 0.234 , 0.290	Depositor DCC
R_{free} test set	1773 reflections (4.85%)	DCC
Wilson B-factor (Å ²)	53.5	Xtriage
Anisotropy	0.288	Xtriage
Bulk solvent k_{sol} (e/Å ³), B_{sol} (Å ²)	0.28 , 48.9	EDS
Estimated twinning fraction	0.029 for h,-k,-l	Xtriage
L-test for twinning ²	$\langle L \rangle = 0.50$, $\langle L^2 \rangle = 0.33$	Xtriage
Outliers	0 of 39948 reflections	Xtriage
F_o, F_c correlation	0.93	EDS
Total number of atoms	8848	wwPDB-VP
Average B, all atoms (Å ²)	59.0	wwPDB-VP

Xtriage's analysis on translational NCS is as follows: *The largest off-origin peak in the Patterson function is 3.81% of the height of the origin peak. No significant pseudotranslation is detected.*

¹Intensities estimated from amplitudes.

²Theoretical values of $\langle |L| \rangle$, $\langle L^2 \rangle$ for acentric reflections are 0.5, 0.375 respectively for untwinned datasets, and 0.333, 0.2 for perfectly twinned datasets.

5 Model quality [i](#)

5.1 Standard geometry [i](#)

Bond lengths and bond angles in the following residue types are not validated in this section: C2F

The Z score for a bond length (or angle) is the number of standard deviations the observed value is removed from the expected value. A bond length (or angle) with $|Z| > 5$ is considered an outlier worth inspection. RMSZ is the root-mean-square of all Z scores of the bond lengths (or angles).

Mol	Chain	Bond lengths		Bond angles	
		RMSZ	$\# Z > 5$	RMSZ	$\# Z > 5$
1	A	0.38	0/2189	0.58	0/2968
1	B	0.40	0/2271	0.64	1/3079 (0.0%)
1	C	0.36	0/2227	0.60	1/3021 (0.0%)
1	D	0.40	0/2286	0.65	2/3100 (0.1%)
All	All	0.39	0/8973	0.62	4/12168 (0.0%)

There are no bond length outliers.

All (4) bond angle outliers are listed below:

Mol	Chain	Res	Type	Atoms	Z	Observed(°)	Ideal(°)
1	C	188	PRO	N-CA-CB	5.70	110.13	103.30
1	D	225	PRO	N-CA-CB	5.50	109.91	103.30
1	B	225	PRO	N-CA-CB	5.48	109.88	103.30
1	D	233	PRO	N-CA-CB	5.34	109.71	103.30

There are no chirality outliers.

There are no planarity outliers.

5.2 Too-close contacts [i](#)

In the following table, the Non-H and H(model) columns list the number of non-hydrogen atoms and hydrogen atoms in the chain respectively. The H(added) column lists the number of hydrogen atoms added and optimized by MolProbity. The Clashes column lists the number of clashes within the asymmetric unit, whereas Symm-Clashes lists symmetry related clashes.

Mol	Chain	Non-H	H(model)	H(added)	Clashes	Symm-Clashes
1	A	2140	0	2075	81	0
1	B	2219	0	2165	75	1
1	C	2176	0	2108	84	0

Continued on next page...

Continued from previous page...

Mol	Chain	Non-H	H(model)	H(added)	Clashes	Symm-Clashes
1	D	2233	0	2168	68	0
2	A	33	0	23	15	0
2	B	33	0	23	10	0
3	A	1	0	0	0	0
3	B	5	0	0	0	0
3	C	4	0	0	0	0
3	D	4	0	0	0	0
All	All	8848	0	8562	305	1

The all-atom clashscore is defined as the number of clashes found per 1000 atoms (including hydrogen atoms). The all-atom clashscore for this structure is 18.

All (305) close contacts within the same asymmetric unit are listed below, sorted by their clash magnitude.

Atom-1	Atom-2	Interatomic distance (Å)	Clash overlap (Å)
2:A:1410:C2F:H72	1:B:207:LEU:CD2	1.97	0.95
2:A:1410:C2F:H72	1:B:207:LEU:HD22	1.50	0.90
2:A:1410:C2F:H13	1:B:239:ARG:HH12	1.42	0.84
1:D:264:HIS:HE1	1:D:286:HIS:HD2	1.26	0.83
1:B:174:HIS:CE1	1:B:286:HIS:HE1	1.97	0.82
1:A:5:TYR:CZ	2:A:1410:C2F:HB2	2.15	0.81
1:D:174:HIS:CE1	1:D:286:HIS:HE1	1.97	0.81
1:B:8:ARG:HH21	1:B:13:ALA:HA	1.45	0.81
1:A:274:ARG:O	1:A:277:GLN:HB2	1.81	0.81
1:B:264:HIS:HE1	1:B:286:HIS:HD2	1.28	0.80
1:C:264:HIS:CD2	1:C:265:SER:H	1.99	0.80
1:A:220:TYR:O	1:A:237:LYS:HB2	1.81	0.80
1:C:274:ARG:O	1:C:277:GLN:HB2	1.83	0.79
1:B:49:LEU:O	1:B:53:ARG:HG2	1.83	0.78
1:B:264:HIS:CE1	1:B:286:HIS:HD2	2.04	0.76
1:A:251:THR:HG23	1:A:264:HIS:CE1	2.21	0.76
1:D:264:HIS:CE1	1:D:286:HIS:HD2	2.04	0.75
1:D:49:LEU:O	1:D:53:ARG:HG2	1.86	0.75
1:D:264:HIS:HE1	1:D:286:HIS:CD2	2.04	0.75
1:C:55:HIS:CE1	1:C:289:LYS:HE2	2.21	0.75
1:B:264:HIS:HE1	1:B:286:HIS:CD2	2.05	0.75
1:D:174:HIS:HE1	1:D:286:HIS:HE1	1.33	0.74
1:B:174:HIS:HE1	1:B:286:HIS:HE1	1.34	0.74
1:B:3:SER:HB2	2:B:1420:C2F:O4	1.86	0.74
1:B:5:TYR:CD1	2:B:1420:C2F:H92	2.22	0.73
2:B:1420:C2F:N10	2:B:1420:C2F:H111	2.03	0.72

Continued on next page...

Continued from previous page...

Atom-1	Atom-2	Interatomic distance (Å)	Clash overlap (Å)
1:B:166:PRO:HB3	1:B:292:GLY:HA2	1.70	0.71
2:A:1410:C2F:H111	2:A:1410:C2F:N10	2.05	0.71
1:B:129:GLY:HA3	1:B:165:ARG:HB3	1.72	0.70
1:A:72:ILE:CD1	1:A:97:GLU:HG2	2.22	0.70
1:D:68:GLY:O	1:D:72:ILE:HG13	1.92	0.69
1:C:72:ILE:CD1	1:C:97:GLU:HG2	2.22	0.69
1:D:166:PRO:HB3	1:D:292:GLY:HA2	1.74	0.69
1:A:149:ASP:OD2	1:A:151:SER:HB3	1.91	0.69
1:C:149:ASP:OD2	1:C:151:SER:HB3	1.93	0.69
1:C:258:PHE:CE2	1:C:288:LEU:HD22	2.28	0.68
1:A:258:PHE:CE2	1:A:288:LEU:HD22	2.29	0.68
1:D:129:GLY:HA3	1:D:165:ARG:HB3	1.76	0.67
1:C:72:ILE:HD11	1:C:97:GLU:HG2	1.77	0.67
1:A:50:GLY:O	1:A:54:GLN:HG2	1.94	0.66
1:C:50:GLY:O	1:C:54:GLN:HG2	1.95	0.66
1:C:66:GLY:HA2	1:C:90:MET:HG2	1.78	0.66
1:B:2:ASP:OD2	1:D:8:ARG:HD3	1.95	0.66
1:B:8:ARG:NH2	1:B:13:ALA:HA	2.10	0.66
1:B:68:GLY:O	1:B:72:ILE:HG13	1.96	0.65
1:A:72:ILE:HD11	1:A:97:GLU:HG2	1.79	0.65
1:D:25:GLU:HG3	1:D:28:ARG:HH21	1.62	0.64
1:A:119:THR:HB	1:A:122:LYS:HE2	1.78	0.64
2:A:1410:C2F:H13	1:B:239:ARG:NH1	2.12	0.64
1:D:220:TYR:O	1:D:237:LYS:HB2	1.98	0.64
1:B:220:TYR:O	1:B:237:LYS:HB2	1.97	0.64
1:C:119:THR:HB	1:C:122:LYS:HE2	1.79	0.64
1:A:66:GLY:HA2	1:A:90:MET:HG2	1.81	0.63
1:D:174:HIS:HE1	1:D:286:HIS:CE1	2.17	0.63
1:A:65:CYS:SG	1:A:83:SER:HB3	2.39	0.63
1:C:65:CYS:SG	1:C:83:SER:HB3	2.39	0.62
1:B:25:GLU:HG3	1:B:28:ARG:HH21	1.64	0.62
1:C:48:LEU:HD23	1:C:73:MET:CE	2.30	0.61
2:B:1420:C2F:H91	1:C:207:LEU:HD22	1.83	0.61
1:B:174:HIS:HE1	1:B:286:HIS:CE1	2.18	0.60
1:B:29:VAL:HG21	1:B:236:SER:HB2	1.83	0.60
2:B:1420:C2F:HN1	2:B:1420:C2F:H111	1.66	0.60
1:A:215:MET:HG2	1:A:216:VAL:N	2.16	0.60
2:B:1420:C2F:HB2	1:D:5:TYR:CZ	2.37	0.60
1:B:4:VAL:HB	1:D:4:VAL:HB	1.82	0.59
1:D:29:VAL:HG21	1:D:236:SER:HB2	1.83	0.59
1:C:247:LEU:HD22	1:C:284:PHE:CE1	2.38	0.59

Continued on next page...

Continued from previous page...

Atom-1	Atom-2	Interatomic distance (Å)	Clash overlap (Å)
1:D:25:GLU:HG3	1:D:28:ARG:NH2	2.17	0.59
1:B:38:ARG:O	1:B:39:SER:HB2	2.03	0.58
1:A:85:ASP:HB3	1:A:91:LEU:HD13	1.85	0.58
1:A:172:ILE:O	1:A:172:ILE:HG23	2.03	0.58
1:A:48:LEU:HD23	1:A:73:MET:CE	2.32	0.58
1:A:223:GLN:HA	1:A:235:PHE:N	2.19	0.58
1:D:38:ARG:O	1:D:39:SER:HB2	2.04	0.58
2:A:1410:C2F:H111	2:A:1410:C2F:HN1	1.69	0.57
1:B:174:HIS:CE1	1:B:286:HIS:CE1	2.88	0.57
1:C:247:LEU:HD22	1:C:284:PHE:CZ	2.39	0.57
1:D:174:HIS:HD2	1:D:175:ARG:O	1.86	0.57
1:B:174:HIS:HD2	1:B:175:ARG:O	1.87	0.57
1:C:51:LEU:HD11	1:C:169:LEU:HD21	1.86	0.57
1:A:61:LEU:HD12	1:A:82:THR:O	2.04	0.57
1:D:174:HIS:CE1	1:D:286:HIS:CE1	2.87	0.57
1:C:40:ARG:NH1	1:C:193:TYR:HB3	2.20	0.56
1:A:161:ALA:C	1:A:163:MET:H	2.09	0.56
1:A:262:CYS:SG	1:A:288:LEU:HD23	2.45	0.56
1:A:247:LEU:HD22	1:A:284:PHE:CE1	2.40	0.56
1:A:247:LEU:HD22	1:A:284:PHE:CZ	2.40	0.56
1:A:5:TYR:OH	2:A:1410:C2F:HB2	2.05	0.56
1:B:25:GLU:HG3	1:B:28:ARG:NH2	2.19	0.56
1:C:6:ARG:O	1:D:239:ARG:HD3	2.05	0.56
1:A:264:HIS:CD2	1:A:265:SER:N	2.74	0.56
2:A:1410:C2F:H71	1:C:5:TYR:CD1	2.40	0.56
1:B:54:GLN:O	1:B:54:GLN:HG2	2.04	0.56
1:C:172:ILE:O	1:C:172:ILE:HG23	2.05	0.55
1:A:221:THR:HG22	1:A:222:VAL:N	2.21	0.55
1:C:258:PHE:HE2	1:C:288:LEU:HD22	1.71	0.55
1:B:136:LEU:HA	1:B:173:ASP:OD1	2.06	0.55
1:C:61:LEU:HD12	1:C:82:THR:O	2.06	0.55
1:C:161:ALA:C	1:C:163:MET:H	2.10	0.55
1:A:192:ILE:HG21	1:A:283:TYR:CE1	2.42	0.55
1:A:241:SER:HB2	1:B:7:THR:HG23	1.88	0.55
2:B:1420:C2F:HG1	2:B:1420:C2F:O	2.08	0.54
1:C:85:ASP:HB3	1:C:91:LEU:HD13	1.89	0.54
1:A:48:LEU:HD23	1:A:73:MET:HE2	1.90	0.54
1:C:215:MET:HG2	1:C:216:VAL:N	2.22	0.54
1:A:177:TYR:HB2	1:A:245:HIS:O	2.08	0.54
1:A:72:ILE:HD13	1:A:97:GLU:HG2	1.89	0.53
1:D:258:PHE:CE2	1:D:288:LEU:HD22	2.44	0.53

Continued on next page...

Continued from previous page...

Atom-1	Atom-2	Interatomic distance (Å)	Clash overlap (Å)
1:A:156:ALA:O	1:A:160:ILE:HG13	2.09	0.53
1:C:183:THR:C	1:C:185:CYS:H	2.12	0.53
1:A:135:CYS:HB3	1:A:172:ILE:HG13	1.91	0.53
1:D:54:GLN:O	1:D:54:GLN:HG2	2.08	0.53
2:A:1410:C2F:H92	1:C:5:TYR:CD1	2.44	0.52
1:A:287:VAL:C	1:A:288:LEU:HD12	2.29	0.52
1:A:251:THR:HG23	1:A:264:HIS:HE1	1.71	0.52
1:A:51:LEU:HD11	1:A:169:LEU:HD21	1.89	0.52
1:C:268:GLY:O	1:C:269:ASP:HB2	2.09	0.52
1:A:183:THR:C	1:A:185:CYS:H	2.13	0.52
1:A:258:PHE:HE2	1:A:288:LEU:HD22	1.73	0.52
1:C:287:VAL:C	1:C:288:LEU:HD12	2.29	0.52
2:A:1410:C2F:O	2:A:1410:C2F:HG1	2.10	0.52
1:C:48:LEU:HD23	1:C:73:MET:HE2	1.91	0.52
1:B:45:LYS:HG2	1:B:73:MET:CE	2.39	0.52
2:B:1420:C2F:H13	1:C:239:ARG:HH12	1.74	0.52
1:B:84:VAL:CG1	1:B:115:ALA:HB3	2.40	0.51
1:D:84:VAL:HG13	1:D:115:ALA:HB3	1.91	0.51
2:A:1410:C2F:C13	1:B:239:ARG:HH12	2.20	0.51
1:C:72:ILE:HD13	1:C:97:GLU:HG2	1.90	0.51
1:A:221:THR:CG2	1:A:222:VAL:N	2.73	0.51
1:C:177:TYR:HB2	1:C:245:HIS:O	2.09	0.51
1:A:6:ARG:O	1:B:239:ARG:HD3	2.11	0.51
1:C:136:LEU:HA	1:C:173:ASP:OD1	2.11	0.51
1:C:173:ASP:OD2	1:C:193:TYR:OH	2.17	0.51
1:A:268:GLY:O	1:A:269:ASP:HB2	2.11	0.51
1:B:14:ALA:HB3	1:B:17:ILE:HD11	1.93	0.51
1:A:136:LEU:HA	1:A:173:ASP:OD1	2.10	0.51
1:B:6:ARG:NH1	1:B:10:LEU:HD21	2.26	0.51
1:B:84:VAL:HG13	1:B:115:ALA:HB3	1.94	0.50
1:D:120:LEU:HB3	1:D:159:ASN:HB3	1.92	0.50
1:D:258:PHE:HE2	1:D:288:LEU:HD22	1.75	0.50
1:C:48:LEU:HD23	1:C:73:MET:HE1	1.93	0.50
1:C:135:CYS:HB3	1:C:172:ILE:HG13	1.93	0.50
1:C:250:PHE:HD2	1:C:286:HIS:CE1	2.30	0.50
1:D:126:ALA:O	1:D:128:ASP:OD1	2.29	0.50
1:A:75:VAL:HG23	1:A:81:VAL:HG21	1.94	0.50
1:C:264:HIS:CD2	1:C:265:SER:N	2.77	0.49
1:B:37:THR:HG23	1:B:194:TYR:CD2	2.47	0.49
1:B:59:ARG:HA	1:B:80:SER:HB3	1.94	0.49
1:C:222:VAL:HG22	1:C:223:GLN:N	2.27	0.49

Continued on next page...

Continued from previous page...

Atom-1	Atom-2	Interatomic distance (Å)	Clash overlap (Å)
1:A:207:LEU:CD2	2:B:1420:C2F:HA	2.42	0.49
1:B:120:LEU:HB3	1:B:159:ASN:HB3	1.94	0.49
1:B:121:ASP:OD1	1:B:122:LYS:HG3	2.13	0.49
1:C:51:LEU:O	1:C:55:HIS:HD2	1.95	0.49
1:D:136:LEU:HA	1:D:173:ASP:OD1	2.13	0.49
1:C:156:ALA:O	1:C:160:ILE:HG13	2.12	0.49
1:D:45:LYS:HG2	1:D:73:MET:CE	2.42	0.49
1:D:223:GLN:HA	1:D:234:GLY:O	2.13	0.49
1:A:37:THR:HG23	1:A:37:THR:O	2.11	0.49
1:A:59:ARG:HA	1:A:80:SER:HB3	1.94	0.49
1:B:72:ILE:HD13	1:B:97:GLU:HG2	1.95	0.49
1:D:37:THR:HG23	1:D:194:TYR:CD2	2.47	0.48
1:B:136:LEU:HD21	1:B:171:VAL:HG12	1.95	0.48
1:A:179:TYR:HE1	1:A:187:PRO:HD3	1.78	0.48
1:D:84:VAL:CG1	1:D:115:ALA:HB3	2.42	0.48
1:C:269:ASP:O	1:C:270:PHE:HB2	2.13	0.48
1:A:41:THR:HG22	1:A:43:GLU:H	1.77	0.48
1:C:37:THR:HG23	1:C:37:THR:O	2.12	0.48
1:B:188:PRO:O	1:B:190:LYS:N	2.46	0.48
1:B:258:PHE:CE2	1:B:288:LEU:HD22	2.47	0.48
1:B:258:PHE:HE2	1:B:288:LEU:HD22	1.79	0.48
1:C:59:ARG:HA	1:C:80:SER:HB3	1.95	0.48
1:D:14:ALA:HB3	1:D:17:ILE:HD11	1.95	0.48
1:A:154:ARG:HH11	1:A:154:ARG:HG2	1.79	0.48
1:D:39:SER:OG	1:D:195:LYS:HE3	2.14	0.47
1:C:223:GLN:HA	1:C:235:PHE:N	2.29	0.47
1:B:192:ILE:HD13	1:B:270:PHE:CZ	2.49	0.47
1:A:250:PHE:HD2	1:A:286:HIS:CE1	2.32	0.47
1:D:53:ARG:O	1:D:55:HIS:N	2.47	0.47
1:C:41:THR:HG22	1:C:43:GLU:H	1.79	0.47
1:A:174:HIS:ND1	1:A:174:HIS:O	2.48	0.47
1:D:192:ILE:HD13	1:D:270:PHE:CZ	2.50	0.47
1:A:150:GLN:NE2	1:A:243:TYR:OH	2.47	0.47
1:D:136:LEU:HD21	1:D:171:VAL:HG12	1.97	0.47
1:B:83:SER:O	1:B:84:VAL:HG23	2.15	0.47
1:C:55:HIS:ND1	1:C:289:LYS:HE2	2.30	0.47
1:D:72:ILE:HD13	1:D:97:GLU:HG2	1.95	0.47
1:D:195:LYS:HG2	1:D:195:LYS:H	1.55	0.46
1:A:192:ILE:HD13	1:A:283:TYR:CD1	2.50	0.46
1:B:40:ARG:HB3	1:B:44:TYR:HD2	1.81	0.46
1:A:264:HIS:HD2	1:A:265:SER:H	1.64	0.46

Continued on next page...

Continued from previous page...

Atom-1	Atom-2	Interatomic distance (Å)	Clash overlap (Å)
1:C:154:ARG:HH11	1:C:154:ARG:HG2	1.81	0.46
1:C:51:LEU:HD12	1:C:55:HIS:CD2	2.51	0.46
1:A:136:LEU:HD21	1:A:171:VAL:HG12	1.98	0.46
1:B:53:ARG:O	1:B:55:HIS:N	2.49	0.46
1:D:188:PRO:O	1:D:190:LYS:N	2.48	0.46
1:C:75:VAL:HG23	1:C:81:VAL:HG21	1.98	0.46
1:A:149:ASP:C	1:A:151:SER:H	2.19	0.46
1:A:220:TYR:O	1:A:237:LYS:CB	2.61	0.45
1:A:203:THR:HG23	1:C:210:ASN:HD21	1.80	0.45
1:B:45:LYS:HG2	1:B:73:MET:HE1	1.97	0.45
1:D:121:ASP:OD1	1:D:122:LYS:HG3	2.17	0.45
1:C:176:ASN:O	1:C:180:ILE:HG13	2.17	0.45
1:A:264:HIS:CD2	1:A:265:SER:H	2.34	0.45
1:B:82:THR:CG2	1:B:130:PHE:HE2	2.30	0.45
1:B:82:THR:HG21	1:B:130:PHE:HE2	1.82	0.45
1:C:149:ASP:C	1:C:151:SER:H	2.20	0.45
1:A:172:ILE:O	1:A:172:ILE:CG2	2.65	0.45
2:B:1420:C2F:HB2	1:D:5:TYR:CE1	2.52	0.45
1:D:221:THR:HA	1:D:237:LYS:HB3	1.99	0.45
1:A:48:LEU:HD23	1:A:73:MET:HE1	1.98	0.44
1:B:221:THR:HA	1:B:237:LYS:HB3	2.00	0.44
1:C:269:ASP:O	1:C:270:PHE:CB	2.66	0.44
1:D:40:ARG:HB3	1:D:44:TYR:HD2	1.81	0.44
1:B:39:SER:OG	1:B:195:LYS:HE3	2.18	0.44
1:C:183:THR:O	1:C:185:CYS:N	2.50	0.44
1:B:268:GLY:O	1:B:269:ASP:HB2	2.17	0.44
1:A:176:ASN:O	1:A:180:ILE:HG13	2.17	0.44
1:D:175:ARG:HG2	1:D:283:TYR:CE2	2.53	0.44
1:D:126:ALA:C	1:D:128:ASP:H	2.20	0.44
1:D:268:GLY:O	1:D:269:ASP:HB2	2.16	0.44
1:B:161:ALA:HB1	1:B:258:PHE:CE1	2.53	0.44
1:C:35:GLY:O	1:C:38:ARG:HG2	2.18	0.44
1:D:200:LYS:HG2	1:D:222:VAL:HG22	2.00	0.44
1:C:262:CYS:SG	1:C:288:LEU:HD23	2.58	0.44
1:B:195:LYS:HG2	1:B:195:LYS:H	1.54	0.44
1:C:172:ILE:O	1:C:172:ILE:CG2	2.65	0.43
1:C:268:GLY:N	1:C:271:LYS:O	2.44	0.43
1:C:209:VAL:O	1:C:210:ASN:HB2	2.18	0.43
1:A:203:THR:HG23	1:C:210:ASN:ND2	2.33	0.43
1:C:40:ARG:HA	1:C:40:ARG:HD3	1.83	0.43
1:C:174:HIS:ND1	1:C:174:HIS:O	2.51	0.43

Continued on next page...

Continued from previous page...

Atom-1	Atom-2	Interatomic distance (Å)	Clash overlap (Å)
1:A:33:TYR:O	1:A:37:THR:HG22	2.19	0.43
1:D:251:THR:HG22	1:D:255:GLN:HE21	1.83	0.43
1:C:188:PRO:HA	1:C:202:ILE:HD12	2.01	0.43
1:A:29:VAL:HG21	1:A:236:SER:HB3	2.01	0.43
1:B:98:ARG:HB2	1:B:110:TRP:CE3	2.53	0.43
1:A:61:LEU:HB2	1:A:130:PHE:CD2	2.54	0.43
1:C:136:LEU:HD21	1:C:171:VAL:HG12	2.01	0.43
1:C:150:GLN:NE2	1:C:243:TYR:OH	2.51	0.43
1:D:82:THR:CG2	1:D:130:PHE:HE2	2.32	0.43
1:C:187:PRO:HB2	1:C:190:LYS:CB	2.48	0.43
1:B:200:LYS:HG2	1:B:222:VAL:HG22	2.01	0.43
1:A:209:VAL:O	1:A:210:ASN:HB2	2.19	0.42
1:C:220:TYR:O	1:C:237:LYS:HB2	2.18	0.42
1:A:195:LYS:HG3	1:A:195:LYS:O	2.20	0.42
1:D:117:TRP:CH2	1:D:140:PHE:HA	2.55	0.42
1:B:251:THR:O	1:B:255:GLN:HG3	2.19	0.42
1:B:175:ARG:HG2	1:B:283:TYR:CE2	2.55	0.42
1:A:265:SER:HB3	1:A:287:VAL:HG22	2.01	0.42
1:C:33:TYR:O	1:C:37:THR:HG22	2.19	0.42
1:D:98:ARG:HB2	1:D:110:TRP:CE3	2.54	0.42
1:A:269:ASP:O	1:A:270:PHE:HB2	2.19	0.42
1:A:92:LYS:HD2	1:B:114:GLU:OE1	2.18	0.42
1:D:45:LYS:HG2	1:D:73:MET:HE1	2.01	0.42
1:D:40:ARG:HH11	1:D:194:TYR:HB3	1.85	0.42
1:A:5:TYR:HB3	2:A:1410:C2F:C13	2.49	0.42
1:A:183:THR:O	1:A:185:CYS:N	2.51	0.42
1:D:82:THR:HG21	1:D:130:PHE:HE2	1.84	0.42
1:C:74:LEU:O	1:C:79:PHE:HB2	2.20	0.42
1:B:53:ARG:C	1:B:55:HIS:H	2.23	0.42
1:C:137:GLY:O	1:C:138:ASN:HB3	2.20	0.42
1:A:41:THR:HG22	1:A:43:GLU:N	2.34	0.41
1:B:208:THR:O	1:D:205:SER:HA	2.20	0.41
1:A:137:GLY:O	1:A:138:ASN:HB3	2.19	0.41
1:B:251:THR:HG22	1:B:255:GLN:HE21	1.84	0.41
1:D:59:ARG:HA	1:D:80:SER:HB3	2.02	0.41
1:D:188:PRO:C	1:D:190:LYS:H	2.23	0.41
1:A:5:TYR:CE2	2:A:1410:C2F:HB2	2.53	0.41
1:B:154:ARG:NH1	1:B:253:LEU:HD11	2.34	0.41
2:A:1410:C2F:H71	1:C:5:TYR:HD1	1.82	0.41
1:B:188:PRO:C	1:B:190:LYS:H	2.23	0.41
1:A:221:THR:O	1:A:222:VAL:HG23	2.21	0.41

Continued on next page...

Continued from previous page...

Atom-1	Atom-2	Interatomic distance (Å)	Clash overlap (Å)
1:C:43:GLU:HG3	1:C:43:GLU:H	1.71	0.41
1:D:251:THR:O	1:D:255:GLN:HG3	2.20	0.41
1:D:186:ALA:O	1:D:187:PRO:O	2.39	0.41
1:A:65:CYS:HB3	1:A:85:ASP:HB2	2.02	0.41
1:C:168:GLY:O	1:C:289:LYS:HA	2.21	0.41
1:C:251:THR:O	1:C:255:GLN:HG3	2.21	0.41
1:B:211:ASN:HD22	1:B:211:ASN:HA	1.71	0.41
1:D:138:ASN:ND2	1:D:175:ARG:HG3	2.36	0.41
1:B:98:ARG:HB2	1:B:110:TRP:CZ3	2.56	0.41
1:D:57:CYS:HA	1:D:131:ASP:HB3	2.03	0.41
1:C:277:GLN:HG2	1:C:278:ALA:H	1.86	0.40
1:A:130:PHE:O	1:A:165:ARG:HG2	2.21	0.40
1:A:187:PRO:HA	1:A:188:PRO:HD2	1.96	0.40
1:C:41:THR:HG22	1:C:43:GLU:N	2.35	0.40
1:B:280:VAL:HA	1:B:281:PRO:HD3	1.87	0.40
1:D:264:HIS:CE1	1:D:286:HIS:CD2	2.90	0.40
1:C:55:HIS:HE1	1:C:289:LYS:HE2	1.80	0.40
1:B:40:ARG:HH11	1:B:194:TYR:HB3	1.86	0.40
1:C:65:CYS:HB3	1:C:85:ASP:HB2	2.03	0.40
1:D:29:VAL:HG21	1:D:236:SER:CB	2.51	0.40
1:B:186:ALA:O	1:B:187:PRO:O	2.39	0.40
1:D:154:ARG:NH1	1:D:253:LEU:HD11	2.36	0.40
1:D:211:ASN:HD22	1:D:211:ASN:HA	1.72	0.40
1:A:40:ARG:HD3	1:A:40:ARG:HA	1.81	0.40
1:C:84:VAL:CG1	1:C:115:ALA:HB3	2.51	0.40
1:D:53:ARG:C	1:D:55:HIS:H	2.24	0.40
1:C:130:PHE:O	1:C:165:ARG:HG2	2.21	0.40
1:D:27:ALA:O	1:D:31:GLN:HG3	2.21	0.40
1:B:72:ILE:CD1	1:B:97:GLU:HG2	2.51	0.40
1:B:117:TRP:CH2	1:B:140:PHE:HA	2.57	0.40
1:C:9:SER:HB2	1:C:12:VAL:CG2	2.51	0.40
1:C:9:SER:HB2	1:C:12:VAL:HG21	2.03	0.40
1:A:143:LEU:HD12	1:A:144:PRO:HD2	2.04	0.40

All (1) symmetry-related close contacts are listed below. The label for Atom-2 includes the symmetry operator and encoded unit-cell translations to be applied.

Atom-1	Atom-2	Interatomic distance (Å)	Clash overlap (Å)
1:B:102:ARG:NH2	1:B:276:GLY:O[2_555]	2.08	0.12

5.3 Torsion angles

5.3.1 Protein backbone

In the following table, the Percentiles column shows the percent Ramachandran outliers of the chain as a percentile score with respect to all X-ray entries followed by that with respect to entries of similar resolution.

The Analysed column shows the number of residues for which the backbone conformation was analysed, and the total number of residues.

Mol	Chain	Analysed	Favoured	Allowed	Outliers	Percentiles	
1	A	271/292 (93%)	233 (86%)	31 (11%)	7 (3%)	7	9
1	B	281/292 (96%)	264 (94%)	11 (4%)	6 (2%)	9	13
1	C	277/292 (95%)	239 (86%)	33 (12%)	5 (2%)	11	17
1	D	283/292 (97%)	265 (94%)	12 (4%)	6 (2%)	9	13
All	All	1112/1168 (95%)	1001 (90%)	87 (8%)	24 (2%)	8	12

All (24) Ramachandran outliers are listed below:

Mol	Chain	Res	Type
1	A	291	THR
1	B	20	GLN
1	C	291	THR
1	D	20	GLN
1	A	195	LYS
1	B	39	SER
1	B	54	GLN
1	B	187	PRO
1	B	189	GLY
1	D	39	SER
1	D	54	GLN
1	D	187	PRO
1	D	189	GLY
1	A	191	ASN
1	A	162	SER
1	B	188	PRO
1	C	192	ILE
1	D	188	PRO
1	A	55	HIS
1	C	162	SER
1	C	55	HIS
1	C	184	GLY

Continued on next page...

Continued from previous page...

Mol	Chain	Res	Type
1	A	184	GLY
1	A	268	GLY

5.3.2 Protein sidechains ⓘ

In the following table, the Percentiles column shows the percent sidechain outliers of the chain as a percentile score with respect to all X-ray entries followed by that with respect to entries of similar resolution.

The Analysed column shows the number of residues for which the sidechain conformation was analysed, and the total number of residues.

Mol	Chain	Analysed	Rotameric	Outliers	Percentiles	
1	A	222/242 (92%)	216 (97%)	6 (3%)	52	78
1	B	233/242 (96%)	225 (97%)	8 (3%)	44	70
1	C	225/242 (93%)	220 (98%)	5 (2%)	60	83
1	D	234/242 (97%)	224 (96%)	10 (4%)	35	59
All	All	914/968 (94%)	885 (97%)	29 (3%)	46	72

All (29) residues with a non-rotameric sidechain are listed below:

Mol	Chain	Res	Type
1	A	31	GLN
1	A	91	LEU
1	A	102	ARG
1	A	123	ASP
1	A	208	THR
1	A	269	ASP
1	B	82	THR
1	B	84	VAL
1	B	102	ARG
1	B	158	LYS
1	B	181	LEU
1	B	187	PRO
1	B	211	ASN
1	B	239	ARG
1	C	31	GLN
1	C	91	LEU
1	C	102	ARG
1	C	123	ASP
1	C	208	THR

Continued on next page...

Continued from previous page...

Mol	Chain	Res	Type
1	D	7	THR
1	D	8	ARG
1	D	82	THR
1	D	84	VAL
1	D	102	ARG
1	D	158	LYS
1	D	181	LEU
1	D	187	PRO
1	D	211	ASN
1	D	239	ARG

Some sidechains can be flipped to improve hydrogen bonding and reduce clashes. All (22) such sidechains are listed below:

Mol	Chain	Res	Type
1	A	150	GLN
1	A	255	GLN
1	A	286	HIS
1	B	31	GLN
1	B	54	GLN
1	B	174	HIS
1	B	211	ASN
1	B	255	GLN
1	B	264	HIS
1	B	286	HIS
1	C	55	HIS
1	C	150	GLN
1	C	255	GLN
1	C	264	HIS
1	C	286	HIS
1	D	31	GLN
1	D	54	GLN
1	D	174	HIS
1	D	211	ASN
1	D	255	GLN
1	D	264	HIS
1	D	286	HIS

5.3.3 RNA ⓘ

There are no RNA molecules in this entry.

5.4 Non-standard residues in protein, DNA, RNA chains [i](#)

There are no non-standard protein/DNA/RNA residues in this entry.

5.5 Carbohydrates [i](#)

There are no carbohydrates in this entry.

5.6 Ligand geometry [i](#)

2 ligands are modelled in this entry.

In the following table, the Counts columns list the number of bonds (or angles) for which Mogul statistics could be retrieved, the number of bonds (or angles) that are observed in the model and the number of bonds (or angles) that are defined in the chemical component dictionary. The Link column lists molecule types, if any, to which the group is linked. The Z score for a bond length (or angle) is the number of standard deviations the observed value is removed from the expected value. A bond length (or angle) with $|Z| > 2$ is considered an outlier worth inspection. RMSZ is the root-mean-square of all Z scores of the bond lengths (or angles).

Mol	Type	Chain	Res	Link	Bond lengths			Bond angles		
					Counts	RMSZ	$\# Z > 2$	Counts	RMSZ	$\# Z > 2$
2	C2F	A	1410	-	25,35,35	2.08	7 (28%)	27,49,49	1.59	5 (18%)
2	C2F	B	1420	-	25,35,35	2.11	8 (32%)	27,49,49	1.53	5 (18%)

In the following table, the Chirals column lists the number of chiral outliers, the number of chiral centers analysed, the number of these observed in the model and the number defined in the chemical component dictionary. Similar counts are reported in the Torsion and Rings columns. '-' means no outliers of that kind were identified.

Mol	Type	Chain	Res	Link	Chirals	Torsions	Rings
2	C2F	A	1410	-	-	0/16/35/35	0/3/3/3
2	C2F	B	1420	-	-	0/16/35/35	0/3/3/3

All (15) bond length outliers are listed below:

Mol	Chain	Res	Type	Atoms	Z	Observed(Å)	Ideal(Å)
2	A	1410	C2F	C16-C15	2.08	1.42	1.39
2	A	1410	C2F	C14-C15	2.12	1.42	1.39
2	B	1420	C2F	C16-C15	2.22	1.42	1.39
2	B	1420	C2F	C13-C12	2.29	1.43	1.39
2	A	1410	C2F	C17-C12	2.33	1.43	1.39
2	B	1420	C2F	C17-C12	2.37	1.43	1.39

Continued on next page...

Continued from previous page...

Mol	Chain	Res	Type	Atoms	Z	Observed(Å)	Ideal(Å)
2	B	1420	C2F	CB-CA	2.40	1.56	1.53
2	A	1410	C2F	CB-CA	2.54	1.56	1.53
2	B	1420	C2F	C14-C15	2.59	1.43	1.39
2	B	1420	C2F	CA-N	2.85	1.50	1.46
2	A	1410	C2F	C4-N3	2.98	1.38	1.33
2	B	1420	C2F	C4-N3	2.99	1.38	1.33
2	A	1410	C2F	CA-N	3.23	1.51	1.46
2	A	1410	C2F	C6-N5	6.63	1.54	1.47
2	B	1420	C2F	C6-N5	6.74	1.54	1.47

All (10) bond angle outliers are listed below:

Mol	Chain	Res	Type	Atoms	Z	Observed(°)	Ideal(°)
2	A	1410	C2F	N3-C2-N1	-3.04	120.55	125.53
2	B	1420	C2F	N3-C2-N1	-2.90	120.78	125.53
2	A	1410	C2F	C4A-C4-N3	-2.83	119.11	123.46
2	B	1420	C2F	C4A-C4-N3	-2.76	119.22	123.46
2	B	1420	C2F	C4-C4A-C8A	2.30	116.26	114.43
2	A	1410	C2F	C4-C4A-C8A	2.45	116.38	114.43
2	A	1410	C2F	C2-N1-C8A	2.95	121.17	114.54
2	B	1420	C2F	C2-N1-C8A	3.05	121.40	114.54
2	B	1420	C2F	C4-N3-C2	3.77	121.17	115.94
2	A	1410	C2F	C4-N3-C2	3.95	121.42	115.94

There are no chirality outliers.

There are no torsion outliers.

There are no ring outliers.

2 monomers are involved in 25 short contacts:

Mol	Chain	Res	Type	Clashes	Symm-Clashes
2	A	1410	C2F	15	0
2	B	1420	C2F	10	0

5.7 Other polymers ⓘ

There are no such residues in this entry.

5.8 Polymer linkage issues ⓘ

There are no chain breaks in this entry.

6 Fit of model and data

6.1 Protein, DNA and RNA chains

In the following table, the column labelled ‘#RSRZ> 2’ contains the number (and percentage) of RSRZ outliers, followed by percent RSRZ outliers for the chain as percentile scores relative to all X-ray entries and entries of similar resolution. The OWAB column contains the minimum, median, 95th percentile and maximum values of the occupancy-weighted average B-factor per residue. The column labelled ‘Q< 0.9’ lists the number of (and percentage) of residues with an average occupancy less than 0.9.

Mol	Chain	Analysed	<RSRZ>	#RSRZ>2	OWAB(Å ²)	Q<0.9
1	A	277/292 (94%)	0.65	31 (11%) 7 8	22, 67, 111, 132	0
1	B	285/292 (97%)	0.35	22 (7%) 16 18	24, 48, 100, 136	0
1	C	281/292 (96%)	0.53	20 (7%) 19 22	19, 63, 110, 132	0
1	D	287/292 (98%)	0.32	20 (6%) 19 22	19, 46, 102, 136	0
All	All	1130/1168 (96%)	0.46	93 (8%) 14 16	19, 56, 108, 136	0

All (93) RSRZ outliers are listed below:

Mol	Chain	Res	Type	RSRZ
1	D	188	PRO	8.4
1	D	189	GLY	8.4
1	B	189	GLY	6.6
1	D	292	GLY	6.3
1	A	292	GLY	6.0
1	B	225	PRO	6.0
1	D	37	THR	5.8
1	C	57	CYS	5.3
1	D	233	PRO	5.1
1	C	196	SER	4.6
1	B	224	VAL	4.5
1	D	235	PHE	4.4
1	C	200	LYS	4.4
1	B	1	VAL	4.3
1	A	291	THR	4.3
1	B	292	GLY	4.3
1	D	127	GLY	4.3
1	D	190	LYS	4.3
1	B	126	ALA	4.2
1	B	199	THR	4.0
1	C	292	GLY	4.0

Continued on next page...

Continued from previous page...

Mol	Chain	Res	Type	RSRZ
1	C	186	ALA	4.0
1	A	235	PHE	3.9
1	A	191	ASN	3.8
1	B	198	LEU	3.8
1	D	4	VAL	3.8
1	C	187	PRO	3.7
1	D	1	VAL	3.7
1	A	188	PRO	3.6
1	B	188	PRO	3.6
1	A	58	HIS	3.5
1	A	274	ARG	3.5
1	D	187	PRO	3.4
1	B	190	LYS	3.4
1	C	235	PHE	3.3
1	A	65	CYS	3.3
1	C	190	LYS	3.2
1	A	260	GLY	3.1
1	B	37	THR	3.0
1	C	135	CYS	2.9
1	B	197	ASP	2.9
1	A	64	ALA	2.9
1	A	126	ALA	2.9
1	D	125	PRO	2.9
1	A	63	VAL	2.9
1	A	36	ASP	2.9
1	A	73	MET	2.7
1	C	134	ILE	2.7
1	A	139	SER	2.7
1	B	125	PRO	2.7
1	C	201	ASP	2.6
1	C	37	THR	2.6
1	B	137	GLY	2.6
1	A	124	VAL	2.6
1	D	197	ASP	2.5
1	D	224	VAL	2.5
1	A	125	PRO	2.5
1	A	284	PHE	2.4
1	A	38	ARG	2.4
1	B	136	LEU	2.4
1	D	135	CYS	2.4
1	A	29	VAL	2.4
1	C	63	VAL	2.4

Continued on next page...

Continued from previous page...

Mol	Chain	Res	Type	RSRZ
1	B	65	CYS	2.4
1	A	140	PHE	2.4
1	D	225	PRO	2.4
1	A	57	CYS	2.4
1	C	191	ASN	2.4
1	C	259	GLY	2.3
1	C	133	VAL	2.3
1	A	127	GLY	2.3
1	D	234	GLY	2.3
1	A	135	CYS	2.3
1	B	38	ARG	2.3
1	D	261	ARG	2.3
1	C	58	HIS	2.2
1	A	280	VAL	2.2
1	A	275	PRO	2.2
1	A	270	PHE	2.2
1	A	32	LEU	2.2
1	C	128	ASP	2.2
1	D	128	ASP	2.2
1	D	64	ALA	2.2
1	B	140	PHE	2.2
1	B	187	PRO	2.2
1	B	263	GLN	2.1
1	B	139	SER	2.1
1	C	199	THR	2.1
1	B	184	GLY	2.0
1	A	40	ARG	2.0
1	C	36	ASP	2.0
1	A	258	PHE	2.0
1	A	192	ILE	2.0

6.2 Non-standard residues in protein, DNA, RNA chains ⓘ

There are no non-standard protein/DNA/RNA residues in this entry.

6.3 Carbohydrates ⓘ

There are no carbohydrates in this entry.

6.4 Ligands [i](#)

In the following table, the Atoms column lists the number of modelled atoms in the group and the number defined in the chemical component dictionary. LLDF column lists the quality of electron density of the group with respect to its neighbouring residues in protein, DNA or RNA chains. The B-factors column lists the minimum, median, 95th percentile and maximum values of B factors of atoms in the group. The column labelled 'Q< 0.9' lists the number of atoms with occupancy less than 0.9.

Mol	Type	Chain	Res	Atoms	RSCC	RSR	LLDF	B-factors(Å ²)	Q<0.9
2	C2F	A	1410	33/33	0.74	0.30	5.95	67,91,105,113	0
2	C2F	B	1420	33/33	0.68	0.35	4.33	68,96,112,113	0

6.5 Other polymers [i](#)

There are no such residues in this entry.