



# Full wwPDB X-ray Structure Validation Report ⓘ

Feb 1, 2016 – 05:28 PM GMT

PDB ID : 4IG0  
Title : HIV-1 reverse transcriptase with bound fragment at the 507 site  
Authors : Bauman, J.D.; Patel, D.; Arnold, E.  
Deposited on : 2012-12-15  
Resolution : 2.50 Å(reported)

This is a Full wwPDB X-ray Structure Validation Report for a publicly released PDB entry.  
We welcome your comments at [validation@mail.wwpdb.org](mailto:validation@mail.wwpdb.org)  
A user guide is available at  
<http://wwpdb.org/validation/2016/XrayValidationReportHelp>  
with specific help available everywhere you see the ⓘ symbol.

---

The following versions of software and data (see [references ⓘ](#)) were used in the production of this report:

MolProbity : 4.02b-467  
Mogul : 1.7 (RC4), CSD as536be (2015)  
Xtriage (Phenix) : 1.9-1692  
EDS : rb-20026688  
Percentile statistics : 20151230.v01 (using entries in the PDB archive December 30th 2015)  
Refmac : 5.8.0135  
CCP4 : 6.5.0  
Ideal geometry (proteins) : Engh & Huber (2001)  
Ideal geometry (DNA, RNA) : Parkinson et al. (1996)  
Validation Pipeline (wwPDB-VP) : trunk26865

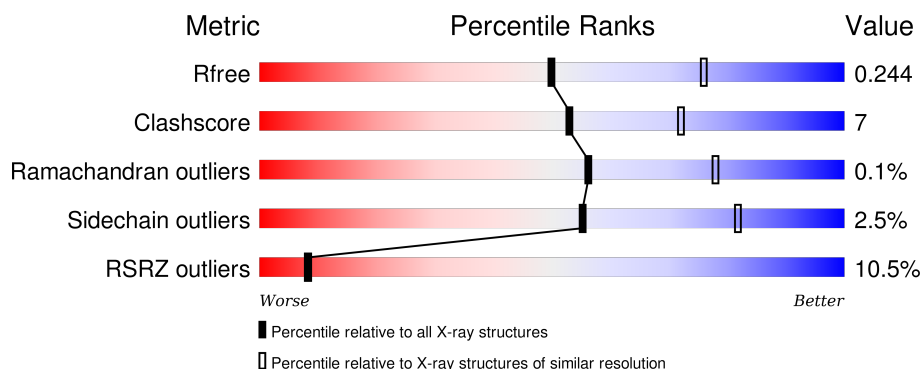
# 1 Overall quality at a glance

The following experimental techniques were used to determine the structure:

## *X-RAY DIFFRACTION*

The reported resolution of this entry is 2.50 Å.

Percentile scores (ranging between 0-100) for global validation metrics of the entry are shown in the following graphic. The table shows the number of entries on which the scores are based.



Metric	Whole archive (#Entries)	Similar resolution (#Entries, resolution range(Å))
$R_{free}$	91344	3553 (2.50-2.50)
Clashscore	102246	4242 (2.50-2.50)
Ramachandran outliers	100387	4156 (2.50-2.50)
Sidechain outliers	100360	4158 (2.50-2.50)
RSRZ outliers	91569	3562 (2.50-2.50)

The table below summarises the geometric issues observed across the polymeric chains and their fit to the electron density. The red, orange, yellow and green segments on the lower bar indicate the fraction of residues that contain outliers for  $\geq 3$ , 2, 1 and 0 types of geometric quality criteria. A grey segment represents the fraction of residues that are not modelled. The numeric value for each fraction is indicated below the corresponding segment, with a dot representing fractions  $\leq 5\%$ . The upper red bar (where present) indicates the fraction of residues that have poor fit to the electron density. The numeric value is given above the bar.

Mol	Chain	Length	Quality of chain
1	A	557	<div> <div>11%</div> <div>85%</div> <div>14%</div> <div>.</div> </div>
2	B	429	<div> <div>9%</div> <div>80%</div> <div>16%</div> <div>..</div> </div>

The following table lists non-polymeric compounds, carbohydrate monomers and non-standard residues in protein, DNA, RNA chains that are outliers for geometric or electron-density-fit criteria:

Mol	Type	Chain	Res	Chirality	Geometry	Clashes	Electron density
3	1FG	A	602	-	-	-	X
4	DMS	B	501	-	-	-	X

## 2 Entry composition [i](#)

There are 5 unique types of molecules in this entry. The entry contains 8103 atoms, of which 0 are hydrogens and 0 are deuteriums.

In the tables below, the ZeroOcc column contains the number of atoms modelled with zero occupancy, the AltConf column contains the number of residues with at least one atom in alternate conformation and the Trace column contains the number of residues modelled with at most 2 atoms.

- Molecule 1 is a protein called Reverse transcriptase/ribonuclease H.

Mol	Chain	Residues	Atoms					ZeroOcc	AltConf	Trace
1	A	556	Total	C	N	O	S	0	0	0
			4516	2923	750	835	8			

There are 5 discrepancies between the modelled and reference sequences:

Chain	Residue	Modelled	Actual	Comment	Reference
A	-1	MET	-	EXPRESSION TAG	UNP P03366
A	0	VAL	-	EXPRESSION TAG	UNP P03366
A	172	ALA	LYS	ENGINEERED MUTATION	UNP P03366
A	173	ALA	LYS	ENGINEERED MUTATION	UNP P03366
A	280	SER	CYS	ENGINEERED MUTATION	UNP P03366

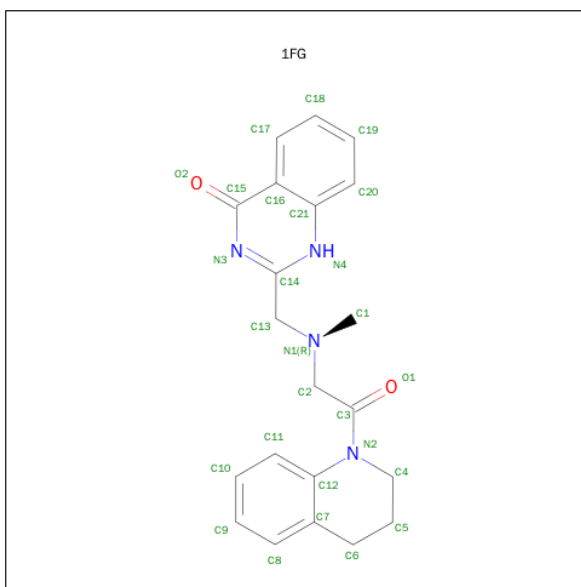
- Molecule 2 is a protein called P51 RT.

Mol	Chain	Residues	Atoms					ZeroOcc	AltConf	Trace
2	B	416	Total	C	N	O	S	0	2	0
			3451	2249	569	626	7			

There are 2 discrepancies between the modelled and reference sequences:

Chain	Residue	Modelled	Actual	Comment	Reference
B	0	GLY	-	EXPRESSION TAG	UNP P03366
B	280	SER	CYS	ENGINEERED MUTATION	UNP P03366

- Molecule 3 is 2-([2-(3,4-DIHYDROQUINOLIN-1(2H)-YL)-2-OXOETHYL](METHYL)AMINO}METHYL)QUINAZOLIN-4(1H)-ONE (three-letter code: 1FG) (formula: C<sub>21</sub>H<sub>22</sub>N<sub>4</sub>O<sub>2</sub>).



Mol	Chain	Residues	Atoms				ZeroOcc	AltConf
3	A	1	Total	C	N	O	0	0
			27	21	4	2		
3	A	1	Total	C	N	O	0	0
			27	21	4	2		

- Molecule 4 is DIMETHYL SULFOXIDE (three-letter code: DMS) (formula:  $C_2H_6OS$ ).



Mol	Chain	Residues	Atoms				ZeroOcc	AltConf
4	A	1	Total	C	O	S	0	0
			4	2	1	1		
4	A	1	Total	C	O	S	0	0
			4	2	1	1		

*Continued on next page...*

*Continued from previous page...*

Mol	Chain	Residues	Atoms				ZeroOcc	AltConf
4	B	1	Total	C	O	S	0	0
			4	2	1	1		
4	B	1	Total	C	O	S	0	0
			4	2	1	1		

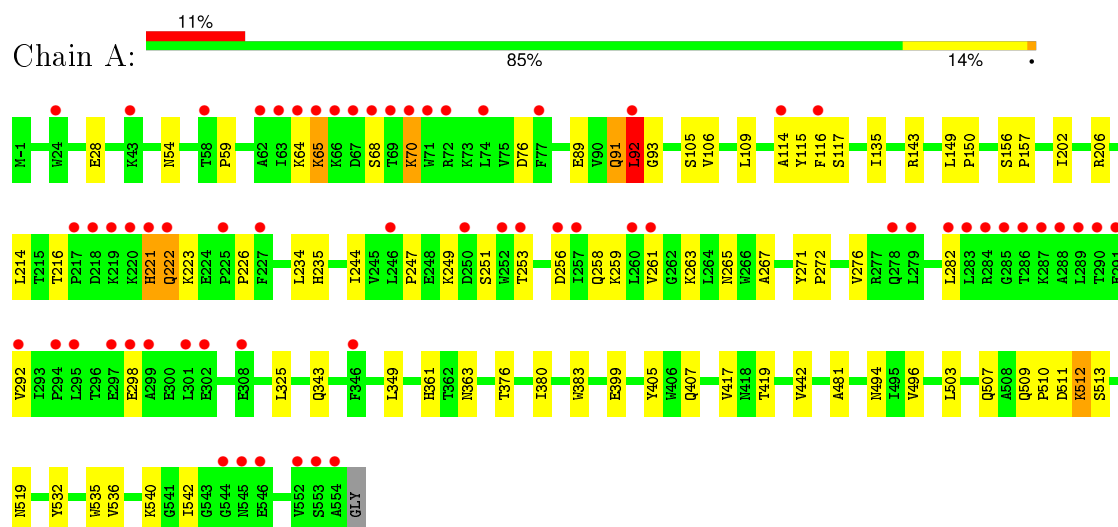
- Molecule 5 is water.

Mol	Chain	Residues	Atoms		ZeroOcc	AltConf
5	A	45	Total	O	0	0
			45	45		
5	B	21	Total	O	0	0
			21	21		

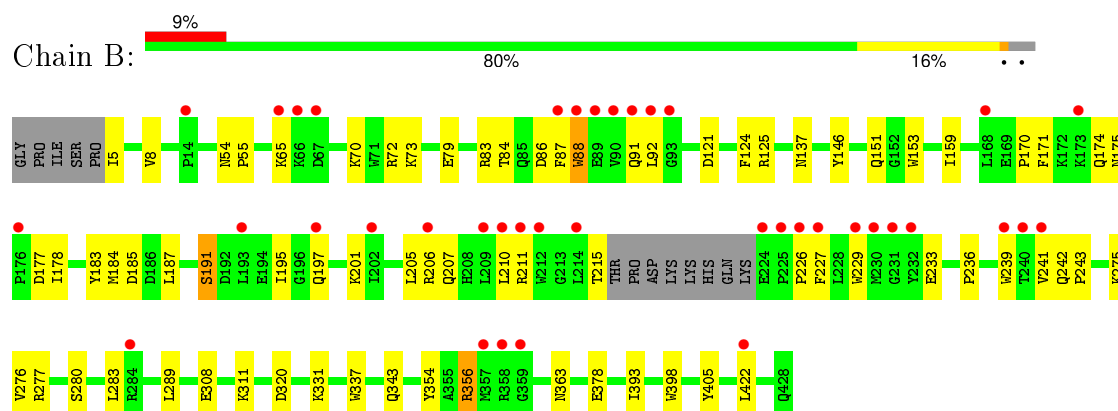
### 3 Residue-property plots

These plots are drawn for all protein, RNA and DNA chains in the entry. The first graphic for a chain summarises the proportions of errors displayed in the second graphic. The second graphic shows the sequence view annotated by issues in geometry and electron density. Residues are color-coded according to the number of geometric quality criteria for which they contain at least one outlier: green = 0, yellow = 1, orange = 2 and red = 3 or more. A red dot above a residue indicates a poor fit to the electron density ( $RSRZ > 2$ ). Stretches of 2 or more consecutive residues without any outlier are shown as a green connector. Residues present in the sample, but not in the model, are shown in grey.

#### • Molecule 1: Reverse transcriptase/ribonuclease H



#### • Molecule 2: P51 RT



## 4 Data and refinement statistics

Property	Value	Source
Space group	C 1 2 1	Depositor
Cell constants a, b, c, $\alpha$ , $\beta$ , $\gamma$	162.34Å 73.35Å 108.79Å 90.00° 99.67° 90.00°	Depositor
Resolution (Å)	43.14 – 2.50 43.14 – 2.50	Depositor EDS
% Data completeness (in resolution range)	99.7 (43.14-2.50) 94.3 (43.14-2.50)	Depositor EDS
$R_{merge}$	0.06	Depositor
$R_{sym}$	(Not available)	Depositor
$\langle I/\sigma(I) \rangle$ <sup>1</sup>	2.81 (at 2.51Å)	Xtriage
Refinement program	PHENIX (phenix.refine: dev_1233)	Depositor
R, $R_{free}$	0.201 , 0.243 0.210 , 0.244	Depositor DCC
$R_{free}$ test set	2207 reflections (5.61%)	DCC
Wilson B-factor (Å <sup>2</sup> )	52.2	Xtriage
Anisotropy	0.181	Xtriage
Bulk solvent $k_{sol}$ (e/Å <sup>3</sup> ), $B_{sol}$ (Å <sup>2</sup> )	0.30 , 53.0	EDS
Estimated twinning fraction	No twinning to report.	Xtriage
L-test for twinning <sup>2</sup>	$\langle  L  \rangle = 0.50$ , $\langle L^2 \rangle = 0.33$	Xtriage
Outliers	0 of 43825 reflections	Xtriage
$F_o, F_c$ correlation	0.94	EDS
Total number of atoms	8103	wwPDB-VP
Average B, all atoms (Å <sup>2</sup> )	91.0	wwPDB-VP

Xtriage's analysis on translational NCS is as follows: *The largest off-origin peak in the Patterson function is 4.44% of the height of the origin peak. No significant pseudotranslation is detected.*

<sup>1</sup>Intensities estimated from amplitudes.

<sup>2</sup>Theoretical values of  $\langle |L| \rangle$ ,  $\langle L^2 \rangle$  for acentric reflections are 0.5, 0.375 respectively for untwinned datasets, and 0.333, 0.2 for perfectly twinned datasets.



## 5 Model quality

### 5.1 Standard geometry

Bond lengths and bond angles in the following residue types are not validated in this section: 1FG, DMS

The Z score for a bond length (or angle) is the number of standard deviations the observed value is removed from the expected value. A bond length (or angle) with  $|Z| > 5$  is considered an outlier worth inspection. RMSZ is the root-mean-square of all Z scores of the bond lengths (or angles).

Mol	Chain	Bond lengths		Bond angles	
		RMSZ	# Z  >5	RMSZ	# Z  >5
1	A	0.30	0/4634	0.49	0/6299
2	B	0.30	0/3554	0.51	1/4829 (0.0%)
All	All	0.30	0/8188	0.50	1/11128 (0.0%)

There are no bond length outliers.

All (1) bond angle outliers are listed below:

Mol	Chain	Res	Type	Atoms	Z	Observed(°)	Ideal(°)
2	B	227	PHE	N-CA-C	5.18	124.99	111.00

There are no chirality outliers.

There are no planarity outliers.

### 5.2 Too-close contacts

In the following table, the Non-H and H(model) columns list the number of non-hydrogen atoms and hydrogen atoms in the chain respectively. The H(added) column lists the number of hydrogen atoms added and optimized by MolProbity. The Clashes column lists the number of clashes within the asymmetric unit, whereas Symm-Clashes lists symmetry related clashes.

Mol	Chain	Non-H	H(model)	H(added)	Clashes	Symm-Clashes
1	A	4516	0	4572	58	0
2	B	3451	0	3476	49	0
3	A	54	0	44	9	0
4	A	8	0	12	0	0
4	B	8	0	12	0	0
5	A	45	0	0	1	0
5	B	21	0	0	0	0
All	All	8103	0	8116	106	0

The all-atom clashscore is defined as the number of clashes found per 1000 atoms (including hydrogen atoms). The all-atom clashscore for this structure is 7.

All (106) close contacts within the same asymmetric unit are listed below, sorted by their clash magnitude.

Atom-1	Atom-2	Interatomic distance (Å)	Clash overlap (Å)
2:B:84:THR:HG21	2:B:153:TRP:HE1	1.30	0.95
1:A:92:LEU:HD12	1:A:93:GLY:H	1.45	0.78
1:A:114:ALA:HB1	1:A:214:LEU:HD13	1.74	0.69
1:A:253:THR:HG22	1:A:292:VAL:HG22	1.73	0.69
2:B:73:LYS:NZ	2:B:146:TYR:OH	2.25	0.68
1:A:247:PRO:HG2	1:A:259:LYS:HZ1	1.58	0.68
2:B:308:GLU:HA	2:B:311:LYS:HE2	1.76	0.67
2:B:178:ILE:HD12	2:B:191:SER:HB3	1.77	0.66
1:A:65:LYS:O	1:A:68:SER:OG	2.13	0.65
1:A:64:LYS:NZ	1:A:68:SER:O	2.28	0.65
1:A:258:GLN:HA	1:A:261:VAL:HG12	1.79	0.65
1:A:532:TYR:OH	3:A:602:1FG:O2	2.17	0.62
1:A:114:ALA:HA	1:A:214:LEU:HD22	1.81	0.62
2:B:236:PRO:HA	2:B:239:TRP:CD2	2.36	0.60
2:B:65:LYS:HE2	2:B:72:ARG:HD3	1.84	0.59
1:A:65:LYS:NZ	1:A:68:SER:OG	2.18	0.58
2:B:226:PRO:O	2:B:229:TRP:HZ3	1.87	0.58
1:A:259:LYS:O	1:A:263:LYS:HD3	2.04	0.58
2:B:171:PHE:CZ	2:B:205:LEU:HD11	2.38	0.57
1:A:65:LYS:HE3	1:A:70:LYS:HE3	1.86	0.56
1:A:54:ASN:O	1:A:143:ARG:NH2	2.39	0.56
2:B:87:PHE:C	2:B:88:TRP:HE3	2.09	0.56
2:B:275:LYS:HA	2:B:277:ARG:HH12	1.71	0.55
1:A:106:VAL:HG21	3:A:601:1FG:H6	1.90	0.54
1:A:89:GLU:OE1	1:A:91:GLN:NE2	2.31	0.54
2:B:175:ASN:HB3	2:B:178:ILE:HG12	1.88	0.54
2:B:88:TRP:CD1	2:B:92:LEU:HD12	2.43	0.53
2:B:86:ASP:HB3	2:B:88:TRP:CE3	2.43	0.53
2:B:8:VAL:HG21	2:B:159:ILE:HG12	1.90	0.52
2:B:320:ASP:O	2:B:343:GLN:NE2	2.39	0.52
2:B:88:TRP:HD1	2:B:92:LEU:HD12	1.74	0.52
1:A:221:HIS:CD2	1:A:221:HIS:N	2.78	0.52
1:A:226:PRO:HB3	1:A:235:HIS:CE1	2.45	0.51
2:B:79:GLU:OE2	2:B:83:ARG:NE	2.36	0.51
1:A:59:PRO:HG2	1:A:76:ASP:HB3	1.92	0.51
1:A:376:THR:O	1:A:380:ILE:HG12	2.11	0.50
1:A:417:VAL:HG22	1:A:419:THR:HG23	1.93	0.50

*Continued on next page...*

*Continued from previous page...*

Atom-1	Atom-2	Interatomic distance (Å)	Clash overlap (Å)
1:A:542:ILE:HG23	2:B:283:LEU:HD13	1.93	0.50
1:A:494:ASN:HB3	2:B:289:LEU:HD12	1.94	0.50
3:A:601:1FG:H14	3:A:601:1FG:H13	1.93	0.49
1:A:221:HIS:CD2	1:A:221:HIS:H	2.30	0.49
1:A:513:SER:N	1:A:519:ASN:OD1	2.44	0.49
1:A:503:LEU:HD23	2:B:422:LEU:HD21	1.95	0.48
1:A:28:GLU:HG3	1:A:135:ILE:HD12	1.96	0.48
2:B:226:PRO:O	2:B:229:TRP:CZ3	2.67	0.47
1:A:507:GLN:HG2	3:A:602:1FG:O1	2.14	0.47
1:A:109:LEU:HD23	1:A:216:THR:HG21	1.96	0.47
1:A:253:THR:HA	1:A:292:VAL:HA	1.96	0.47
1:A:156:SER:HB2	1:A:157:PRO:HD3	1.97	0.46
2:B:206:ARG:O	2:B:210:LEU:HG	2.16	0.46
1:A:405:TYR:CE2	1:A:407:GLN:HB2	2.50	0.46
1:A:93:GLY:HA3	2:B:137:ASN:ND2	2.30	0.46
1:A:117:SER:HB2	1:A:214:LEU:HD21	1.98	0.46
2:B:170:PRO:O	2:B:174:GLN:OE1	2.33	0.46
2:B:197:GLN:N	2:B:197:GLN:OE1	2.49	0.46
2:B:207:GLN:HA	2:B:210:LEU:HD12	1.97	0.46
3:A:602:1FG:H3	5:A:707:HOH:O	2.16	0.45
2:B:171:PHE:HA	2:B:174:GLN:HE22	1.81	0.45
1:A:535:TRP:HB3	3:A:602:1FG:C19	2.47	0.45
1:A:253:THR:HG23	1:A:256:ASP:OD2	2.17	0.45
1:A:511:ASP:OD1	1:A:512:LYS:HD2	2.17	0.45
1:A:214:LEU:HA	1:A:214:LEU:HD23	1.65	0.45
1:A:222:GLN:O	1:A:223:LYS:HG3	2.17	0.45
1:A:325:LEU:HD21	1:A:383:TRP:CE3	2.52	0.45
2:B:233:GLU:H	2:B:233:GLU:HG2	1.59	0.45
2:B:393:ILE:HD13	2:B:398:TRP:HB2	1.98	0.44
1:A:536:VAL:HB	1:A:542:ILE:HD12	2.00	0.44
1:A:234:LEU:HD22	3:A:601:1FG:H18	1.98	0.44
1:A:222:GLN:HG3	1:A:222:GLN:H	1.55	0.44
2:B:422:LEU:HA	2:B:422:LEU:HD23	1.72	0.43
2:B:177:ASP:OD1	2:B:177:ASP:N	2.46	0.43
1:A:265:ASN:OD1	1:A:276:VAL:HG11	2.19	0.43
1:A:271:TYR:HA	1:A:272:PRO:HD3	1.82	0.43
2:B:54:ASN:HA	2:B:55:PRO:HD2	1.88	0.43
1:A:65:LYS:HD3	1:A:70:LYS:HG3	1.99	0.42
3:A:602:1FG:H13	3:A:602:1FG:H22	1.69	0.42
2:B:211:ARG:O	2:B:215:THR:HG23	2.19	0.42
2:B:151:GLN:HB3	2:B:185:ASP:OD2	2.20	0.42

*Continued on next page...*

*Continued from previous page...*

Atom-1	Atom-2	Interatomic distance (Å)	Clash overlap (Å)
2:B:84:THR:HG22	2:B:124:PHE:HZ	1.85	0.42
1:A:115:TYR:OH	1:A:156:SER:HB3	2.20	0.42
1:A:363:ASN:HA	1:A:511:ASP:OD1	2.19	0.42
2:B:121:ASP:O	2:B:125:ARG:HG3	2.20	0.42
1:A:442:VAL:HB	1:A:481:ALA:HB1	2.01	0.42
2:B:187:LEU:HA	2:B:187:LEU:HD12	1.85	0.42
2:B:174:GLN:OE1	2:B:174:GLN:N	2.44	0.42
2:B:276:VAL:H	2:B:277:ARG:NH1	2.18	0.42
1:A:343:GLN:HG3	1:A:349:LEU:HD11	2.02	0.42
2:B:331:LYS:HB2	2:B:337:TRP:CZ3	2.54	0.42
1:A:361:HIS:HB3	1:A:510:PRO:HB3	2.02	0.42
2:B:354:TYR:OH	2:B:378:GLU:OE2	2.34	0.42
1:A:540:LYS:HA	1:A:540:LYS:HD3	1.71	0.41
2:B:197:GLN:O	2:B:201:LYS:HG2	2.20	0.41
2:B:201:LYS:O	2:B:205:LEU:HD13	2.20	0.41
2:B:363:ASN:ND2	2:B:405:TYR:OH	2.53	0.41
2:B:183:TYR:CE2	2:B:184:MET:HG2	2.56	0.41
2:B:171:PHE:HA	2:B:174:GLN:NE2	2.36	0.41
2:B:242:GLN:HA	2:B:243:PRO:HD2	1.94	0.41
1:A:442:VAL:HG22	1:A:496:VAL:O	2.21	0.41
1:A:509:GLN:HG2	3:A:602:1FG:H15	2.02	0.41
2:B:65:LYS:HE2	2:B:72:ARG:CD	2.48	0.41
1:A:149:LEU:HA	1:A:150:PRO:HD3	1.92	0.41
2:B:356:ARG:HD2	2:B:356:ARG:HA	1.84	0.41
1:A:249:LYS:HE2	1:A:256:ASP:OD1	2.21	0.40
1:A:247:PRO:HG2	1:A:259:LYS:NZ	2.30	0.40
1:A:202:ILE:O	1:A:206:ARG:HG3	2.21	0.40
1:A:244:ILE:HG13	1:A:267:ALA:HB2	2.03	0.40

There are no symmetry-related clashes.

## 5.3 Torsion angles [i](#)

### 5.3.1 Protein backbone [i](#)

In the following table, the Percentiles column shows the percent Ramachandran outliers of the chain as a percentile score with respect to all X-ray entries followed by that with respect to entries of similar resolution.

The Analysed column shows the number of residues for which the backbone conformation was analysed, and the total number of residues.

Mol	Chain	Analysed	Favoured	Allowed	Outliers	Percentiles	
1	A	554/557 (100%)	547 (99%)	6 (1%)	1 (0%)	52	75
2	B	414/429 (96%)	410 (99%)	4 (1%)	0	100	100
All	All	968/986 (98%)	957 (99%)	10 (1%)	1 (0%)	56	78

All (1) Ramachandran outliers are listed below:

Mol	Chain	Res	Type
1	A	92	LEU

### 5.3.2 Protein sidechains ⓘ

In the following table, the Percentiles column shows the percent sidechain outliers of the chain as a percentile score with respect to all X-ray entries followed by that with respect to entries of similar resolution.

The Analysed column shows the number of residues for which the sidechain conformation was analysed, and the total number of residues.

Mol	Chain	Analysed	Rotameric	Outliers	Percentiles	
1	A	495/495 (100%)	482 (97%)	13 (3%)	54	81
2	B	379/390 (97%)	370 (98%)	9 (2%)	57	82
All	All	874/885 (99%)	852 (98%)	22 (2%)	55	82

All (22) residues with a non-rotameric sidechain are listed below:

Mol	Chain	Res	Type
1	A	65	LYS
1	A	70	LYS
1	A	91	GLN
1	A	92	LEU
1	A	105	SER
1	A	116	PHE
1	A	221	HIS
1	A	222	GLN
1	A	251	SER
1	A	282	LEU
1	A	298	GLU
1	A	399	GLU
1	A	512	LYS
2	B	5	ILE
2	B	70	LYS

*Continued on next page...*

*Continued from previous page...*

Mol	Chain	Res	Type
2	B	88	TRP
2	B	91	GLN
2	B	191	SER
2	B	195	ILE
2	B	241	VAL
2	B	280	SER
2	B	356	ARG

Some sidechains can be flipped to improve hydrogen bonding and reduce clashes. All (3) such sidechains are listed below:

Mol	Chain	Res	Type
1	A	221	HIS
1	A	235	HIS
2	B	137	ASN

### 5.3.3 RNA [i](#)

There are no RNA molecules in this entry.

## 5.4 Non-standard residues in protein, DNA, RNA chains [i](#)

There are no non-standard protein/DNA/RNA residues in this entry.

## 5.5 Carbohydrates [i](#)

There are no carbohydrates in this entry.

## 5.6 Ligand geometry [i](#)

6 ligands are modelled in this entry.

In the following table, the Counts columns list the number of bonds (or angles) for which Mogul statistics could be retrieved, the number of bonds (or angles) that are observed in the model and the number of bonds (or angles) that are defined in the chemical component dictionary. The Link column lists molecule types, if any, to which the group is linked. The Z score for a bond length (or angle) is the number of standard deviations the observed value is removed from the expected value. A bond length (or angle) with  $|Z| > 2$  is considered an outlier worth inspection. RMSZ is the root-mean-square of all Z scores of the bond lengths (or angles).

Mol	Type	Chain	Res	Link	Bond lengths			Bond angles		
					Counts	RMSZ	# Z  > 2	Counts	RMSZ	# Z  > 2
3	1FG	A	601	-	29,30,30	2.22	7 (24%)	32,42,42	2.24	7 (21%)
3	1FG	A	602	-	29,30,30	2.15	7 (24%)	32,42,42	1.43	4 (12%)
4	DMS	A	603	-	3,3,3	0.67	0	3,3,3	0.65	0
4	DMS	A	604	-	3,3,3	0.66	0	3,3,3	0.57	0
4	DMS	B	501	-	3,3,3	0.66	0	3,3,3	0.63	0
4	DMS	B	502	-	3,3,3	0.66	0	3,3,3	0.45	0

In the following table, the Chirals column lists the number of chiral outliers, the number of chiral centers analysed, the number of these observed in the model and the number defined in the chemical component dictionary. Similar counts are reported in the Torsion and Rings columns. '-' means no outliers of that kind were identified.

Mol	Type	Chain	Res	Link	Chirals	Torsions	Rings
3	1FG	A	601	-	-	0/12/22/22	0/4/4/4
3	1FG	A	602	-	-	0/12/22/22	0/4/4/4
4	DMS	A	603	-	-	0/0/0/0	0/0/0/0
4	DMS	A	604	-	-	0/0/0/0	0/0/0/0
4	DMS	B	501	-	-	0/0/0/0	0/0/0/0
4	DMS	B	502	-	-	0/0/0/0	0/0/0/0

All (14) bond length outliers are listed below:

Mol	Chain	Res	Type	Atoms	Z	Observed(Å)	Ideal(Å)
3	A	602	1FG	C4-N2	-3.32	1.42	1.47
3	A	601	1FG	C4-N2	-2.95	1.43	1.47
3	A	602	1FG	C6-C7	2.04	1.54	1.51
3	A	601	1FG	C15-C16	2.20	1.45	1.41
3	A	602	1FG	C21-N4	2.21	1.41	1.37
3	A	601	1FG	C21-N4	2.45	1.41	1.37
3	A	601	1FG	C15-N3	2.53	1.37	1.33
3	A	602	1FG	C12-N2	2.68	1.46	1.41
3	A	602	1FG	C15-N3	2.72	1.38	1.33
3	A	601	1FG	C12-N2	3.15	1.47	1.41
3	A	601	1FG	O2-C15	5.68	1.38	1.24
3	A	602	1FG	O2-C15	5.69	1.38	1.24
3	A	602	1FG	C3-N2	6.79	1.48	1.36
3	A	601	1FG	C3-N2	7.35	1.49	1.36

All (11) bond angle outliers are listed below:

Mol	Chain	Res	Type	Atoms	Z	Observed(°)	Ideal(°)
3	A	601	1FG	N4-C14-N3	-3.96	120.48	126.18

*Continued on next page...*

*Continued from previous page...*

Mol	Chain	Res	Type	Atoms	Z	Observed(°)	Ideal(°)
3	A	601	1FG	O1-C3-N2	-3.83	116.55	121.93
3	A	602	1FG	N4-C14-N3	-3.77	120.74	126.18
3	A	602	1FG	C13-C14-N3	2.33	120.79	116.95
3	A	602	1FG	C2-C3-N2	2.50	119.15	116.52
3	A	601	1FG	C8-C7-C12	2.77	121.55	118.10
3	A	601	1FG	C5-C4-N2	3.21	115.71	110.00
3	A	602	1FG	C14-N4-C21	4.47	120.89	115.86
3	A	601	1FG	C14-N4-C21	4.49	120.92	115.86
3	A	601	1FG	C3-C2-N1	4.65	123.70	112.40
3	A	601	1FG	C2-C3-N2	6.82	123.67	116.52

There are no chirality outliers.

There are no torsion outliers.

There are no ring outliers.

2 monomers are involved in 9 short contacts:

Mol	Chain	Res	Type	Clashes	Symm-Clashes
3	A	601	1FG	3	0
3	A	602	1FG	6	0

## 5.7 Other polymers [i](#)

There are no such residues in this entry.

## 5.8 Polymer linkage issues [i](#)

There are no chain breaks in this entry.



## 6 Fit of model and data ⓘ

### 6.1 Protein, DNA and RNA chains ⓘ

In the following table, the column labelled ‘#RSRZ> 2’ contains the number (and percentage) of RSRZ outliers, followed by percent RSRZ outliers for the chain as percentile scores relative to all X-ray entries and entries of similar resolution. The OWAB column contains the minimum, median, 95<sup>th</sup> percentile and maximum values of the occupancy-weighted average B-factor per residue. The column labelled ‘Q< 0.9’ lists the number of (and percentage) of residues with an average occupancy less than 0.9.

Mol	Chain	Analysed	<RSRZ>	#RSRZ>2	OWAB(Å <sup>2</sup> )	Q<0.9
1	A	556/557 (99%)	0.63	63 (11%) 7 7	45, 84, 169, 218	0
2	B	416/429 (96%)	0.74	39 (9%) 11 11	47, 79, 157, 205	0
All	All	972/986 (98%)	0.68	102 (10%) 8 8	45, 82, 165, 218	0

All (102) RSRZ outliers are listed below:

Mol	Chain	Res	Type	RSRZ
1	A	285	GLY	10.3
1	A	290	THR	9.7
2	B	358	ARG	8.6
1	A	69	THR	8.2
1	A	219	LYS	7.9
2	B	90	VAL	7.7
2	B	226	PRO	7.6
2	B	212	TRP	7.4
1	A	218	ASP	7.1
1	A	220	LYS	6.7
1	A	67	ASP	6.5
2	B	92	LEU	6.5
1	A	288	ALA	6.4
2	B	89	GLU	6.3
2	B	227	PHE	6.3
2	B	231	GLY	6.3
2	B	230	MET	5.8
1	A	301	LEU	5.6
2	B	87	PHE	5.4
1	A	286	THR	5.3
2	B	88	TRP	5.2
1	A	222	GLN	5.2
1	A	74	LEU	5.0
2	B	229	TRP	4.9

*Continued on next page...*

*Continued from previous page...*

Mol	Chain	Res	Type	RSRZ
1	A	298	GLU	4.8
1	A	257	ILE	4.8
2	B	214	LEU	4.8
1	A	221	HIS	4.8
2	B	359	GLY	4.7
1	A	284	ARG	4.6
1	A	279	LEU	4.6
1	A	68	SER	4.6
2	B	168	LEU	4.5
1	A	246	LEU	4.5
1	A	252	TRP	4.3
1	A	217	PRO	4.3
1	A	289	LEU	4.2
2	B	225	PRO	4.2
2	B	284	ARG	4.0
1	A	225	PRO	4.0
1	A	295	LEU	3.9
1	A	256	ASP	3.8
2	B	232	TYR	3.8
2	B	357	MET	3.8
1	A	546	GLU	3.8
2	B	209	LEU	3.7
1	A	63	ILE	3.7
1	A	116	PHE	3.6
2	B	240	THR	3.5
1	A	64	LYS	3.5
2	B	67	ASP	3.5
1	A	114	ALA	3.5
1	A	292	VAL	3.5
2	B	65	LYS	3.4
1	A	24	TRP	3.4
2	B	224	GLU	3.4
1	A	66	LYS	3.3
2	B	210	LEU	3.3
1	A	71	TRP	3.2
1	A	72	ARG	3.2
1	A	278	GLN	3.2
1	A	250	ASP	3.2
2	B	93	GLY	3.1
2	B	173	LYS	3.1
2	B	66	LYS	3.1
2	B	193	LEU	3.1

*Continued on next page...*

*Continued from previous page...*

Mol	Chain	Res	Type	RSRZ
1	A	299	ALA	3.1
1	A	291	GLU	3.0
1	A	283	LEU	3.0
2	B	91	GLN	2.9
1	A	92	LEU	2.9
2	B	211	ARG	2.8
1	A	294	PRO	2.8
1	A	261	VAL	2.8
2	B	197	GLN	2.8
1	A	554	ALA	2.8
2	B	176	PRO	2.7
1	A	302	GLU	2.7
1	A	282	LEU	2.7
1	A	58	THR	2.7
2	B	14	PRO	2.7
1	A	62	ALA	2.5
1	A	346	PHE	2.5
1	A	297	GLU	2.5
1	A	552	VAL	2.5
1	A	260	LEU	2.4
1	A	553	SER	2.4
1	A	70	LYS	2.4
2	B	202	ILE	2.4
1	A	77	PHE	2.3
1	A	43	LYS	2.3
1	A	544	GLY	2.3
1	A	287	LYS	2.2
1	A	65	LYS	2.2
1	A	227	PHE	2.2
2	B	422	LEU	2.2
2	B	241	VAL	2.2
2	B	239	TRP	2.1
1	A	308	GLU	2.1
2	B	206	ARG	2.1
1	A	253	THR	2.1
1	A	545	ASN	2.0

## 6.2 Non-standard residues in protein, DNA, RNA chains ⓘ

There are no non-standard protein/DNA/RNA residues in this entry.

### 6.3 Carbohydrates [i](#)

There are no carbohydrates in this entry.

### 6.4 Ligands [i](#)

In the following table, the Atoms column lists the number of modelled atoms in the group and the number defined in the chemical component dictionary. LLDF column lists the quality of electron density of the group with respect to its neighbouring residues in protein, DNA or RNA chains. The B-factors column lists the minimum, median, 95<sup>th</sup> percentile and maximum values of B factors of atoms in the group. The column labelled 'Q< 0.9' lists the number of atoms with occupancy less than 0.9.

Mol	Type	Chain	Res	Atoms	RSCC	RSR	LLDF	B-factors(Å <sup>2</sup> )	Q<0.9
4	DMS	B	501	4/4	0.94	0.24	3.57	59,73,118,119	0
3	1FG	A	602	27/27	0.82	0.28	2.25	90,110,147,151	0
4	DMS	B	502	4/4	0.96	0.24	1.13	74,105,105,184	0
3	1FG	A	601	27/27	0.91	0.20	0.88	88,99,107,110	0
4	DMS	A	603	4/4	0.98	0.17	0.11	48,82,86,90	0
4	DMS	A	604	4/4	0.96	0.14	-	68,105,105,109	0

### 6.5 Other polymers [i](#)

There are no such residues in this entry.