



# Full wwPDB X-ray Structure Validation Report ⓘ

Feb 1, 2016 – 02:48 AM GMT

PDB ID : 2ITX  
Title : CRYSTAL STRUCTURE OF EGFR KINASE DOMAIN IN COMPLEX WITH AMP-PNP  
Authors : Yun, C.-H.; Boggon, T.J.; Li, Y.; Woo, S.; Greulich, H.; Meyerson, M.; Eck, M.J.  
Deposited on : 2006-05-25  
Resolution : 2.98 Å(reported)

This is a Full wwPDB X-ray Structure Validation Report for a publicly released PDB entry.  
We welcome your comments at [validation@mail.wwpdb.org](mailto:validation@mail.wwpdb.org)  
A user guide is available at  
<http://wwpdb.org/validation/2016/XrayValidationReportHelp>  
with specific help available everywhere you see the ⓘ symbol.

---

The following versions of software and data (see [references ⓘ](#)) were used in the production of this report:

MolProbity : 4.02b-467  
Mogul : 1.7 (RC4), CSD as536be (2015)  
Xtriage (Phenix) : 1.9-1692  
EDS : rb-20026688  
Percentile statistics : 20151230.v01 (using entries in the PDB archive December 30th 2015)  
Refmac : 5.8.0135  
CCP4 : 6.5.0  
Ideal geometry (proteins) : Engh & Huber (2001)  
Ideal geometry (DNA, RNA) : Parkinson et al. (1996)  
Validation Pipeline (wwPDB-VP) : trunk26865

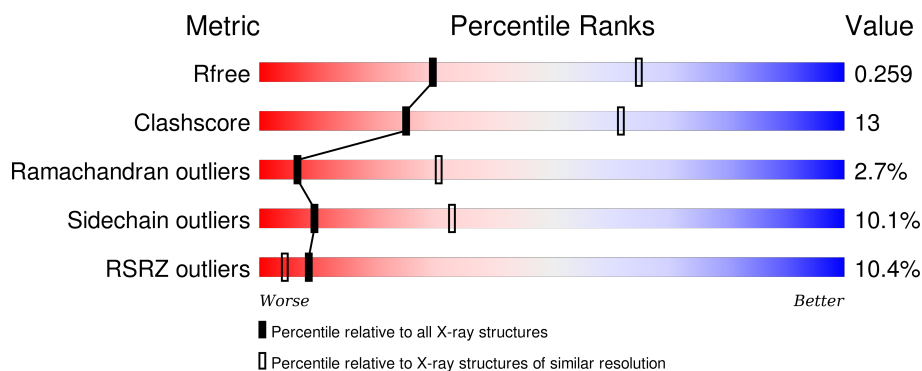
# 1 Overall quality at a glance

The following experimental techniques were used to determine the structure:

## *X-RAY DIFFRACTION*

The reported resolution of this entry is 2.98 Å.

Percentile scores (ranging between 0-100) for global validation metrics of the entry are shown in the following graphic. The table shows the number of entries on which the scores are based.



Metric	Whole archive (#Entries)	Similar resolution (#Entries, resolution range(Å))
$R_{free}$	91344	1992 (3.00-2.96)
Clashscore	102246	2349 (3.00-2.96)
Ramachandran outliers	100387	2274 (3.00-2.96)
Sidechain outliers	100360	2277 (3.00-2.96)
RSRZ outliers	91569	2007 (3.00-2.96)

The table below summarises the geometric issues observed across the polymeric chains and their fit to the electron density. The red, orange, yellow and green segments on the lower bar indicate the fraction of residues that contain outliers for  $\geq 3$ , 2, 1 and 0 types of geometric quality criteria. A grey segment represents the fraction of residues that are not modelled. The numeric value for each fraction is indicated below the corresponding segment, with a dot representing fractions  $\leq 5\%$ . The upper red bar (where present) indicates the fraction of residues that have poor fit to the electron density. The numeric value is given above the bar.

Mol	Chain	Length	Quality of chain
1	A	327	

## 2 Entry composition [i](#)

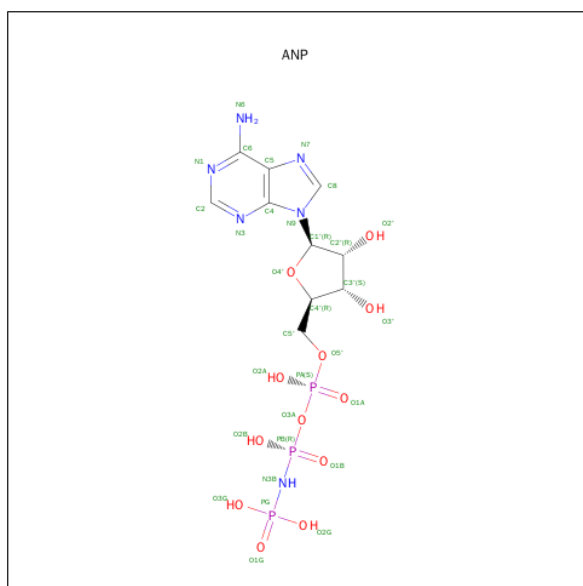
There are 3 unique types of molecules in this entry. The entry contains 2530 atoms, of which 0 are hydrogens and 0 are deuteriums.

In the tables below, the ZeroOcc column contains the number of atoms modelled with zero occupancy, the AltConf column contains the number of residues with at least one atom in alternate conformation and the Trace column contains the number of residues modelled with at most 2 atoms.

- Molecule 1 is a protein called EPIDERMAL GROWTH FACTOR RECEPTOR.

Mol	Chain	Residues	Atoms					ZeroOcc	AltConf	Trace
1	A	307	Total	C	N	O	S	0	0	0
			2448	1572	408	450	18			

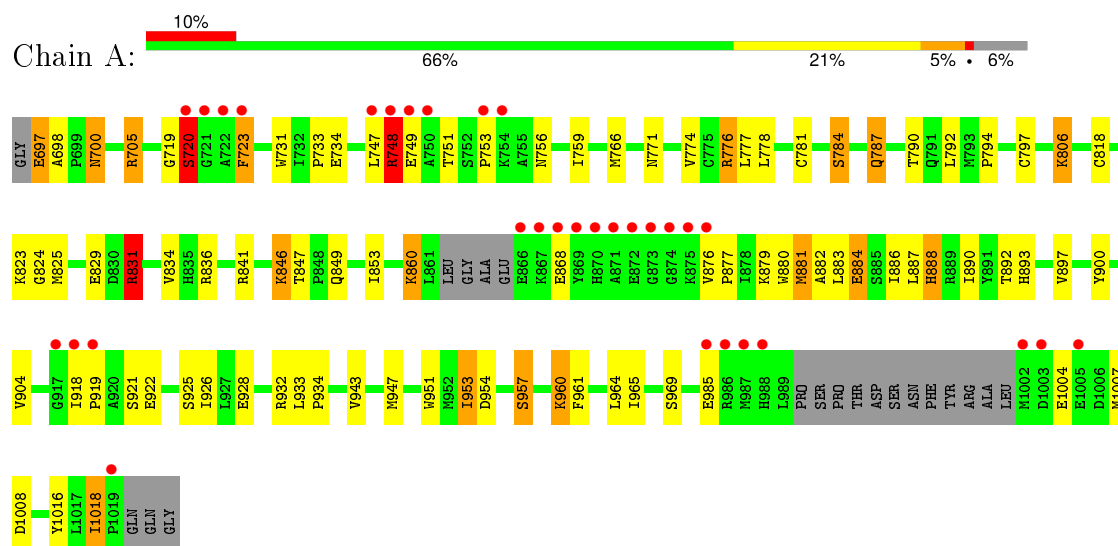
- Molecule 2 is PHOSPHOAMINOPHOSPHONIC ACID-ADENYLATE ESTER (three-letter code: ANP) (formula: C<sub>10</sub>H<sub>17</sub>N<sub>6</sub>O<sub>12</sub>P<sub>3</sub>).



### 3 Residue-property plots

These plots are drawn for all protein, RNA and DNA chains in the entry. The first graphic for a chain summarises the proportions of errors displayed in the second graphic. The second graphic shows the sequence view annotated by issues in geometry and electron density. Residues are color-coded according to the number of geometric quality criteria for which they contain at least one outlier: green = 0, yellow = 1, orange = 2 and red = 3 or more. A red dot above a residue indicates a poor fit to the electron density ( $\text{RSRZ} > 2$ ). Stretches of 2 or more consecutive residues without any outlier are shown as a green connector. Residues present in the sample, but not in the model, are shown in grey.

#### • Molecule 1: EPIDERMAL GROWTH FACTOR RECEPTOR



## 4 Data and refinement statistics

Property	Value	Source
Space group	I 2 3	Depositor
Cell constants a, b, c, $\alpha$ , $\beta$ , $\gamma$	144.46 Å   144.46 Å   144.46 Å 90.00°   90.00°   90.00°	Depositor
Resolution (Å)	24.78 – 2.98 24.77 – 2.98	Depositor EDS
% Data completeness (in resolution range)	100.0 (24.78-2.98) 100.0 (24.77-2.98)	Depositor EDS
$R_{merge}$	0.09	Depositor
$R_{sym}$	(Not available)	Depositor
$\langle I/\sigma(I) \rangle$ <sup>1</sup>	4.50 (at 2.99 Å)	Xtriage
Refinement program	REFMAC 5.2.0019	Depositor
R, $R_{free}$	0.188 , 0.261 0.186 , 0.259	Depositor DCC
$R_{free}$ test set	502 reflections (5.09%)	DCC
Wilson B-factor (Å <sup>2</sup> )	58.6	Xtriage
Anisotropy	0.000	Xtriage
Bulk solvent $k_{sol}$ (e/Å <sup>3</sup> ), $B_{sol}$ (Å <sup>2</sup> )	0.32 , 43.0	EDS
Estimated twinning fraction	0.030 for -l,-k,-h	Xtriage
L-test for twinning <sup>2</sup>	$\langle  L  \rangle = 0.50$ , $\langle L^2 \rangle = 0.33$	Xtriage
Outliers	0 of 10374 reflections	Xtriage
$F_o, F_c$ correlation	0.94	EDS
Total number of atoms	2530	wwPDB-VP
Average B, all atoms (Å <sup>2</sup> )	54.0	wwPDB-VP

Xtriage's analysis on translational NCS is as follows: *The largest off-origin peak in the Patterson function is 3.14% of the height of the origin peak. No significant pseudotranslation is detected.*

<sup>1</sup>Intensities estimated from amplitudes.

<sup>2</sup>Theoretical values of  $\langle |L| \rangle$ ,  $\langle L^2 \rangle$  for acentric reflections are 0.5, 0.375 respectively for untwinned datasets, and 0.333, 0.2 for perfectly twinned datasets.

## 5 Model quality [i](#)

### 5.1 Standard geometry [i](#)

Bond lengths and bond angles in the following residue types are not validated in this section: ANP

The Z score for a bond length (or angle) is the number of standard deviations the observed value is removed from the expected value. A bond length (or angle) with  $|Z| > 5$  is considered an outlier worth inspection. RMSZ is the root-mean-square of all Z scores of the bond lengths (or angles).

Mol	Chain	Bond lengths		Bond angles	
		RMSZ	$\# Z  > 5$	RMSZ	$\# Z  > 5$
1	A	0.76	2/2499 (0.1%)	0.83	1/3382 (0.0%)

All (2) bond length outliers are listed below:

Mol	Chain	Res	Type	Atoms	Z	Observed(Å)	Ideal(Å)
1	A	818	CYS	CB-SG	-5.88	1.72	1.81
1	A	860	LYS	CE-NZ	5.76	1.63	1.49

All (1) bond angle outliers are listed below:

Mol	Chain	Res	Type	Atoms	Z	Observed( $^{\circ}$ )	Ideal( $^{\circ}$ )
1	A	831	ARG	NE-CZ-NH1	5.59	123.09	120.30

There are no chirality outliers.

There are no planarity outliers.

### 5.2 Too-close contacts [i](#)

In the following table, the Non-H and H(model) columns list the number of non-hydrogen atoms and hydrogen atoms in the chain respectively. The H(added) column lists the number of hydrogen atoms added and optimized by MolProbity. The Clashes column lists the number of clashes within the asymmetric unit, whereas Symm-Clashes lists symmetry related clashes.

Mol	Chain	Non-H	H(model)	H(added)	Clashes	Symm-Clashes
1	A	2448	0	2467	63	0
2	A	31	0	13	0	0
3	A	51	0	0	3	0
All	All	2530	0	2480	63	0

The all-atom clashscore is defined as the number of clashes found per 1000 atoms (including hydrogen atoms). The all-atom clashscore for this structure is 13.

All (63) close contacts within the same asymmetric unit are listed below, sorted by their clash magnitude.

Atom-1	Atom-2	Interatomic distance (Å)	Clash overlap (Å)
1:A:882:ALA:HB1	1:A:884:GLU:OE2	1.61	1.01
1:A:831:ARG:HH11	1:A:831:ARG:HB3	1.30	0.94
1:A:834:VAL:HG12	1:A:836:ARG:HG3	1.62	0.81
1:A:932:ARG:NH1	1:A:951:TRP:O	2.16	0.79
1:A:919:PRO:HD2	1:A:922:GLU:OE2	1.88	0.74
1:A:1004:GLU:HB2	1:A:1007:MET:HG2	1.73	0.70
1:A:751:THR:HG23	1:A:756:ASN:HD21	1.57	0.69
1:A:876:VAL:HG12	1:A:877:PRO:HD2	1.76	0.67
1:A:829:GLU:HG3	1:A:893:HIS:CG	2.31	0.65
1:A:831:ARG:CB	1:A:831:ARG:HH11	2.10	0.60
1:A:781:CYS:HB3	1:A:787:GLN:HG3	1.84	0.59
1:A:825:MET:SD	1:A:853:ILE:HD13	2.44	0.58
1:A:882:ALA:CB	1:A:884:GLU:OE2	2.44	0.58
1:A:868:GLU:HB2	1:A:890:ILE:HG23	1.84	0.58
1:A:824:GLY:HA3	1:A:853:ILE:HD12	1.88	0.56
1:A:731:TRP:O	1:A:733:PRO:HD3	2.08	0.54
1:A:876:VAL:CG1	1:A:877:PRO:HD2	2.39	0.53
1:A:697:GLU:HG3	1:A:698:ALA:H	1.73	0.53
1:A:834:VAL:HG12	1:A:836:ARG:CG	2.35	0.53
1:A:943:VAL:HG12	1:A:947:MET:CE	2.39	0.53
1:A:705:ARG:HH21	1:A:1018:ILE:HG21	1.73	0.52
1:A:1004:GLU:HB2	1:A:1007:MET:CG	2.41	0.51
1:A:897:VAL:O	1:A:900:TYR:HB3	2.10	0.51
1:A:900:TYR:O	1:A:904:VAL:HG23	2.10	0.51
1:A:918:ILE:HD13	1:A:926:ILE:HD11	1.92	0.51
1:A:697:GLU:HG3	1:A:698:ALA:N	2.26	0.51
1:A:876:VAL:HG12	1:A:881:MET:SD	2.50	0.51
1:A:887:LEU:HB2	1:A:888:HIS:ND1	2.27	0.50
1:A:700:ASN:C	1:A:700:ASN:HD22	2.15	0.50
1:A:1004:GLU:HB2	1:A:1007:MET:SD	2.51	0.49
1:A:887:LEU:C	1:A:888:HIS:ND1	2.66	0.48
1:A:829:GLU:HG3	1:A:893:HIS:CD2	2.48	0.48
1:A:771:ASN:HB3	1:A:774:VAL:HG23	1.95	0.48
1:A:961:PHE:HA	1:A:964:LEU:HD12	1.95	0.48
1:A:823:LYS:HA	1:A:965:ILE:HD11	1.96	0.48
1:A:985:GLU:CD	1:A:985:GLU:H	2.17	0.47
1:A:766:MET:HB3	1:A:777:LEU:HB2	1.97	0.46

*Continued on next page...*

*Continued from previous page...*

Atom-1	Atom-2	Interatomic distance (Å)	Clash overlap (Å)
1:A:933:LEU:HB3	1:A:934:PRO:HD2	1.98	0.46
1:A:700:ASN:C	1:A:700:ASN:ND2	2.69	0.46
1:A:756:ASN:HA	1:A:759:ILE:HG22	1.97	0.45
1:A:918:ILE:HD13	1:A:926:ILE:CD1	2.45	0.45
1:A:868:GLU:HB3	1:A:892:THR:HG22	1.97	0.45
1:A:846:LYS:HG3	1:A:847:THR:HG23	1.97	0.45
1:A:792:LEU:O	1:A:794:PRO:HD3	2.16	0.45
1:A:918:ILE:HG21	1:A:926:ILE:HD12	1.98	0.45
1:A:776:ARG:NH2	1:A:1016:TYR:O	2.50	0.44
1:A:756:ASN:ND2	1:A:756:ASN:H	2.15	0.44
1:A:719:GLY:O	1:A:720:SER:HB2	2.18	0.44
1:A:747:LEU:O	1:A:748:ARG:C	2.56	0.44
1:A:697:GLU:HA	3:A:3002:HOH:O	2.18	0.43
1:A:778:LEU:HD12	1:A:790:THR:C	2.38	0.43
1:A:751:THR:CG2	1:A:756:ASN:HD21	2.29	0.42
1:A:776:ARG:HA	3:A:3016:HOH:O	2.19	0.42
1:A:932:ARG:HD2	1:A:951:TRP:HB3	2.00	0.42
1:A:881:MET:HB2	1:A:881:MET:HE3	1.95	0.42
1:A:883:LEU:HD22	1:A:953:ILE:HD13	2.02	0.42
1:A:831:ARG:HA	1:A:831:ARG:HD2	1.85	0.41
1:A:879:LYS:HB2	1:A:880:TRP:CZ3	2.55	0.41
1:A:876:VAL:CG1	1:A:881:MET:SD	3.08	0.41
1:A:954:ASP:O	1:A:957:SER:HB2	2.21	0.41
1:A:860:LYS:HA	1:A:860:LYS:HD3	1.72	0.41
1:A:882:ALA:O	1:A:886:ILE:HG13	2.21	0.41
1:A:960:LYS:HA	3:A:3047:HOH:O	2.22	0.40

There are no symmetry-related clashes.

## 5.3 Torsion angles [i](#)

### 5.3.1 Protein backbone [i](#)

In the following table, the Percentiles column shows the percent Ramachandran outliers of the chain as a percentile score with respect to all X-ray entries followed by that with respect to entries of similar resolution.

The Analysed column shows the number of residues for which the backbone conformation was analysed, and the total number of residues.



Mol	Chain	Analysed	Favoured	Allowed	Outliers	Percentiles	
1	A	301/327 (92%)	255 (85%)	38 (13%)	8 (3%)	6	30

All (8) Ramachandran outliers are listed below:

Mol	Chain	Res	Type
1	A	734	GLU
1	A	749	GLU
1	A	720	SER
1	A	748	ARG
1	A	723	PHE
1	A	784	SER
1	A	806	LYS
1	A	753	PRO

### 5.3.2 Protein sidechains ⓘ

In the following table, the Percentiles column shows the percent sidechain outliers of the chain as a percentile score with respect to all X-ray entries followed by that with respect to entries of similar resolution.

The Analysed column shows the number of residues for which the sidechain conformation was analysed, and the total number of residues.

Mol	Chain	Analysed	Rotameric	Outliers	Percentiles	
1	A	268/287 (93%)	241 (90%)	27 (10%)	9	33

All (27) residues with a non-rotameric sidechain are listed below:

Mol	Chain	Res	Type
1	A	697	GLU
1	A	700	ASN
1	A	705	ARG
1	A	720	SER
1	A	723	PHE
1	A	748	ARG
1	A	776	ARG
1	A	784	SER
1	A	787	GLN
1	A	797	CYS
1	A	806	LYS
1	A	831	ARG
1	A	841	ARG

*Continued on next page...*

*Continued from previous page...*

Mol	Chain	Res	Type
1	A	846	LYS
1	A	849	GLN
1	A	881	MET
1	A	884	GLU
1	A	888	HIS
1	A	921	SER
1	A	925	SER
1	A	928	GLU
1	A	953	ILE
1	A	957	SER
1	A	960	LYS
1	A	969	SER
1	A	1008	ASP
1	A	1018	ILE

Some sidechains can be flipped to improve hydrogen bonding and reduce clashes. All (4) such sidechains are listed below:

Mol	Chain	Res	Type
1	A	700	ASN
1	A	756	ASN
1	A	893	HIS
1	A	976	GLN

### 5.3.3 RNA [i](#)

There are no RNA molecules in this entry.

## 5.4 Non-standard residues in protein, DNA, RNA chains [i](#)

There are no non-standard protein/DNA/RNA residues in this entry.

### 5.5 Carbohydrates [i](#)

There are no carbohydrates in this entry.

### 5.6 Ligand geometry [i](#)

1 ligand is modelled in this entry.

In the following table, the Counts columns list the number of bonds (or angles) for which Mogul statistics could be retrieved, the number of bonds (or angles) that are observed in the model and the number of bonds (or angles) that are defined in the chemical component dictionary. The Link column lists molecule types, if any, to which the group is linked. The Z score for a bond length (or angle) is the number of standard deviations the observed value is removed from the expected value. A bond length (or angle) with  $|Z| > 2$  is considered an outlier worth inspection. RMSZ is the root-mean-square of all Z scores of the bond lengths (or angles).

Mol	Type	Chain	Res	Link	Bond lengths			Bond angles		
					Counts	RMSZ	$\# Z  > 2$	Counts	RMSZ	$\# Z  > 2$
2	ANP	A	2020	-	27,33,33	2.57	7 (25%)	30,52,52	2.27	7 (23%)

In the following table, the Chirals column lists the number of chiral outliers, the number of chiral centers analysed, the number of these observed in the model and the number defined in the chemical component dictionary. Similar counts are reported in the Torsion and Rings columns. '-' means no outliers of that kind were identified.

Mol	Type	Chain	Res	Link	Chirals	Torsions	Rings
2	ANP	A	2020	-	-	0/12/38/38	0/3/3/3

All (7) bond length outliers are listed below:

Mol	Chain	Res	Type	Atoms	Z	Observed(Å)	Ideal(Å)
2	A	2020	ANP	O4'-C1'	3.24	1.45	1.41
2	A	2020	ANP	C5-C4	3.63	1.48	1.40
2	A	2020	ANP	PB-O3A	3.87	1.63	1.59
2	A	2020	ANP	PB-N3B	5.47	1.77	1.63
2	A	2020	ANP	PG-O1G	5.59	1.52	1.46
2	A	2020	ANP	PB-O1B	5.69	1.52	1.46
2	A	2020	ANP	PG-N3B	5.74	1.78	1.63

All (7) bond angle outliers are listed below:

Mol	Chain	Res	Type	Atoms	Z	Observed(°)	Ideal(°)
2	A	2020	ANP	N3-C2-N1	-7.09	123.47	128.89
2	A	2020	ANP	O1G-PG-N3B	-4.90	104.38	111.90
2	A	2020	ANP	C2'-C1'-N9	-4.18	107.91	114.29
2	A	2020	ANP	O1B-PB-N3B	-3.62	106.34	111.90
2	A	2020	ANP	C4-C5-N7	-3.39	106.36	109.48
2	A	2020	ANP	O4'-C1'-N9	2.83	114.03	108.10
2	A	2020	ANP	O2B-PB-O1B	3.45	117.20	110.00

There are no chirality outliers.

There are no torsion outliers.

There are no ring outliers.

No monomer is involved in short contacts.

## 5.7 Other polymers

There are no such residues in this entry.

## 5.8 Polymer linkage issues

There are no chain breaks in this entry.

## 6 Fit of model and data ⓘ

### 6.1 Protein, DNA and RNA chains ⓘ

In the following table, the column labelled ‘#RSRZ> 2’ contains the number (and percentage) of RSRZ outliers, followed by percent RSRZ outliers for the chain as percentile scores relative to all X-ray entries and entries of similar resolution. The OWAB column contains the minimum, median, 95<sup>th</sup> percentile and maximum values of the occupancy-weighted average B-factor per residue. The column labelled ‘Q< 0.9’ lists the number of (and percentage) of residues with an average occupancy less than 0.9.

Mol	Chain	Analysed	<RSRZ>	#RSRZ>2	OWAB(Å <sup>2</sup> )	Q<0.9
1	A	307/327 (93%)	0.13	32 (10%) 8 4	25, 47, 99, 113	2 (0%)

All (32) RSRZ outliers are listed below:

Mol	Chain	Res	Type	RSRZ
1	A	988	HIS	5.6
1	A	723	PHE	5.4
1	A	1005	GLU	5.0
1	A	722	ALA	4.5
1	A	875	LYS	4.4
1	A	872	GLU	4.2
1	A	721	GLY	3.9
1	A	720	SER	3.9
1	A	874	GLY	3.7
1	A	866	GLU	3.6
1	A	873	GLY	3.6
1	A	749	GLU	3.4
1	A	747	LEU	3.2
1	A	871	ALA	3.1
1	A	987	MET	2.9
1	A	986	ARG	2.8
1	A	869	TYR	2.7
1	A	868	GLU	2.7
1	A	1003	ASP	2.7
1	A	754	LYS	2.6
1	A	985	GLU	2.5
1	A	876	VAL	2.4
1	A	919	PRO	2.3
1	A	750	ALA	2.2
1	A	867	LYS	2.2
1	A	917	GLY	2.2
1	A	870	HIS	2.2

*Continued on next page...*

*Continued from previous page...*

Mol	Chain	Res	Type	RSRZ
1	A	918	ILE	2.1
1	A	748	ARG	2.1
1	A	1002	MET	2.1
1	A	753	PRO	2.1
1	A	1019	PRO	2.0

## 6.2 Non-standard residues in protein, DNA, RNA chains [i](#)

There are no non-standard protein/DNA/RNA residues in this entry.

## 6.3 Carbohydrates [i](#)

There are no carbohydrates in this entry.

## 6.4 Ligands [i](#)

In the following table, the Atoms column lists the number of modelled atoms in the group and the number defined in the chemical component dictionary. LLDF column lists the quality of electron density of the group with respect to its neighbouring residues in protein, DNA or RNA chains. The B-factors column lists the minimum, median, 95<sup>th</sup> percentile and maximum values of B factors of atoms in the group. The column labelled 'Q < 0.9' lists the number of atoms with occupancy less than 0.9.

Mol	Type	Chain	Res	Atoms	RSCC	RSR	LLDF	B-factors( $\text{\AA}^2$ )	Q<0.9
2	ANP	A	2020	31/31	0.85	0.22	0.03	77,97,122,122	0

## 6.5 Other polymers [i](#)

There are no such residues in this entry.