



Full wwPDB X-ray Structure Validation Report ⓘ

Jan 31, 2016 – 08:18 PM GMT

PDB ID : 1JQ7
Title : HCMV protease dimer-interface mutant, S225Y complexed to Inhibitor BILC 408
Authors : Batra, R.; Khayat, R.; Tong, L.
Deposited on : 2001-08-03
Resolution : 3.00 Å(reported)

This is a Full wwPDB X-ray Structure Validation Report for a publicly released PDB entry.
We welcome your comments at validation@mail.wwpdb.org
A user guide is available at
<http://wwpdb.org/validation/2016/XrayValidationReportHelp>
with specific help available everywhere you see the ⓘ symbol.

The following versions of software and data (see [references ⓘ](#)) were used in the production of this report:

MolProbity : 4.02b-467
Mogul : 1.7 (RC4), CSD as536be (2015)
Xtriage (Phenix) : **NOT EXECUTED**
EDS : **NOT EXECUTED**
Percentile statistics : 20151230.v01 (using entries in the PDB archive December 30th 2015)
Ideal geometry (proteins) : Engh & Huber (2001)
Ideal geometry (DNA, RNA) : Parkinson et al. (1996)
Validation Pipeline (wwPDB-VP) : trunk26865

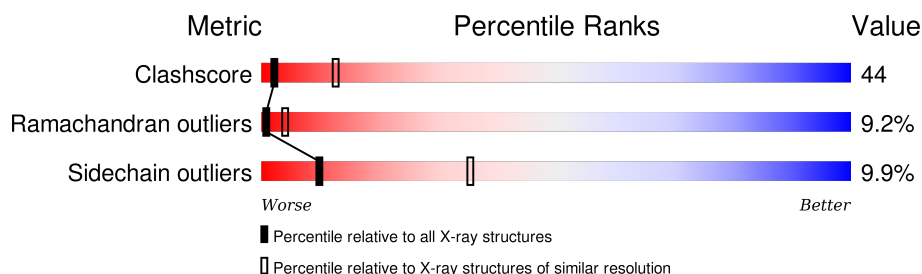
1 Overall quality at a glance

The following experimental techniques were used to determine the structure:

X-RAY DIFFRACTION

The reported resolution of this entry is 3.00 Å.

Percentile scores (ranging between 0-100) for global validation metrics of the entry are shown in the following graphic. The table shows the number of entries on which the scores are based.



Metric	Whole archive (#Entries)	Similar resolution (#Entries, resolution range(Å))
Clashscore	102246	1912 (3.00-3.00)
Ramachandran outliers	100387	1853 (3.00-3.00)
Sidechain outliers	100360	1856 (3.00-3.00)

The table below summarises the geometric issues observed across the polymeric chains and their fit to the electron density. The red, orange, yellow and green segments on the lower bar indicate the fraction of residues that contain outliers for ≥ 3 , 2, 1 and 0 types of geometric quality criteria. A grey segment represents the fraction of residues that are not modelled. The numeric value for each fraction is indicated below the corresponding segment, with a dot representing fractions $\leq 5\%$. The upper red bar (where present) indicates the fraction of residues that have poor fit to the electron density. The numeric value is given above the bar.

Note EDS was not executed.

Mol	Chain	Length	Quality of chain
1	A	256	
1	B	256	

2 Entry composition i

There are 2 unique types of molecules in this entry. The entry contains 3395 atoms, of which 0 are hydrogens and 0 are deuteriums.

In the tables below, the ZeroOcc column contains the number of atoms modelled with zero occupancy, the AltConf column contains the number of residues with at least one atom in alternate conformation and the Trace column contains the number of residues modelled with at most 2 atoms.

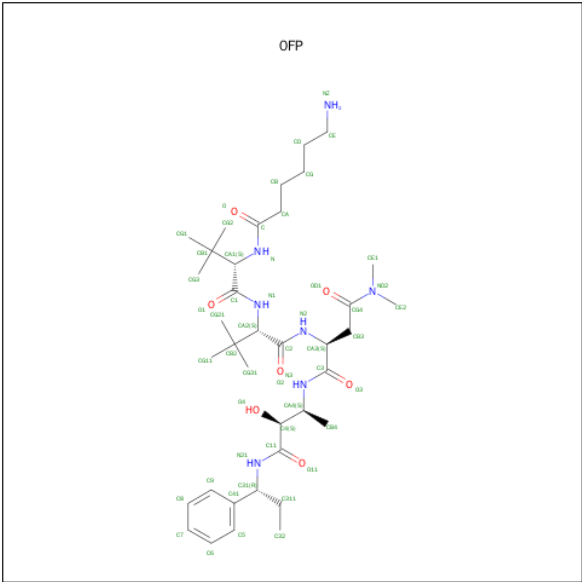
- Molecule 1 is a protein called ASSEMBLIN.

Mol	Chain	Residues	Atoms					ZeroOcc	AltConf	Trace
1	A	210	Total	C	N	O	S	0	0	0
			1621	1029	287	301	4			
1	B	217	Total	C	N	O	S	0	0	0
			1688	1061	306	316	5			

There are 4 discrepancies between the modelled and reference sequences:

Chain	Residue	Modelled	Actual	Comment	Reference
A	1143	GLN	ALA	ENGINEERED	UNP P16753
A	1225	TYR	SER	ENGINEERED	UNP P16753
B	1443	GLN	ALA	ENGINEERED	UNP P16753
B	1525	TYR	SER	ENGINEERED	UNP P16753

- Molecule 2 is N-(6-AMINOHEXANOYL)-3-METHYL-L-VALYL-3-METHYL-L-VALYL-N 1 -[(2S,3S)-3-HYDROXY-4-OXO-4-[(1R)-1-PHENYLPROPYL]AMINO}BUTAN-2-YL]-N 4 ,N 4 -DIMETHYL-L-ASPARTAMIDE (three-letter code: 0FP) (formula: C₃₇H₆₃N₇O₇).



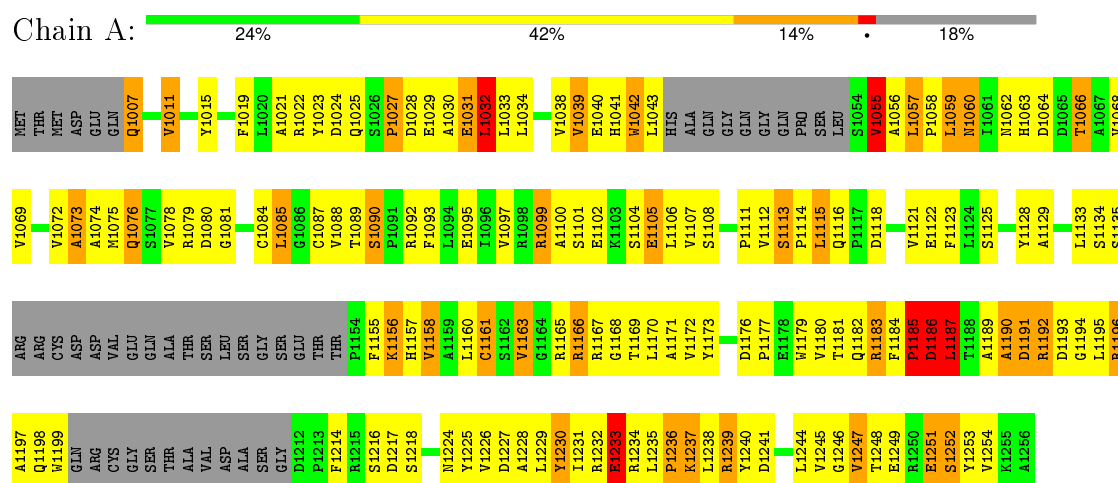
Mol	Chain	Residues	Atoms				ZeroOcc	AltConf
2	A	1	Total	C	N	O	0	0
			43	31	6	6		
2	B	1	Total	C	N	O	0	0
			43	31	6	6		

3 Residue-property plots

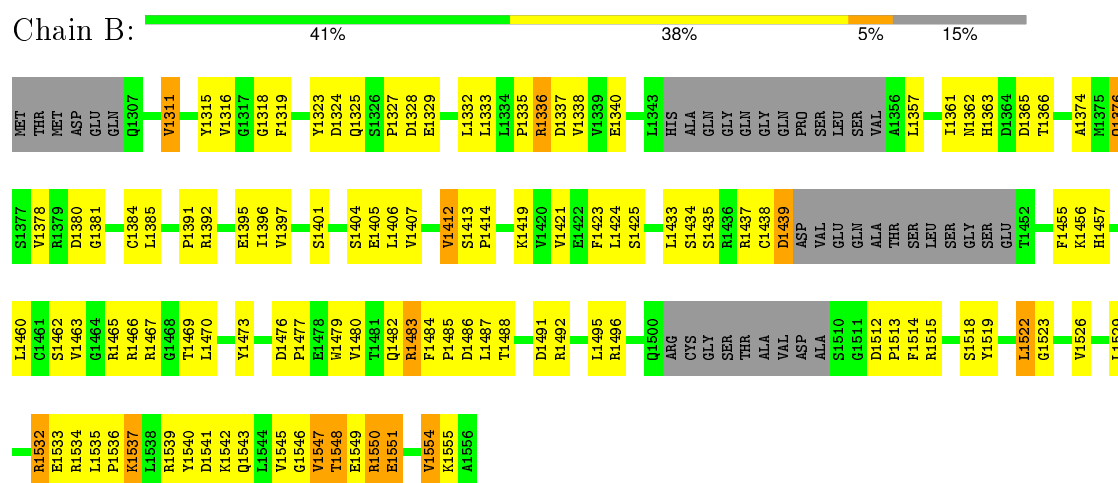
These plots are drawn for all protein, RNA and DNA chains in the entry. The first graphic for a chain summarises the proportions of errors displayed in the second graphic. The second graphic shows the sequence view annotated by issues in geometry and electron density. Residues are color-coded according to the number of geometric quality criteria for which they contain at least one outlier: green = 0, yellow = 1, orange = 2 and red = 3 or more. A red dot above a residue indicates a poor fit to the electron density ($RSRZ > 2$). Stretches of 2 or more consecutive residues without any outlier are shown as a green connector. Residues present in the sample, but not in the model, are shown in grey.

Note EDS was not executed.

• Molecule 1: ASSEMBLIN



• Molecule 1: ASSEMBLIN



4 Data and refinement statistics

Xtriage (Phenix) and EDS were not executed - this section will therefore be incomplete.

Property	Value	Source
Space group	P 41 21 2	Depositor
Cell constants a, b, c, α , β , γ	74.25Å 74.25Å 215.80Å 90.00° 90.00° 90.00°	Depositor
Resolution (Å)	19.99 – 3.00	Depositor
% Data completeness (in resolution range)	85.5 (19.99-3.00)	Depositor
R_{merge}	(Not available)	Depositor
R_{sym}	(Not available)	Depositor
Refinement program	CNS 1.0	Depositor
R, R_{free}	0.260 , 0.339	Depositor
Estimated twinning fraction	No twinning to report.	Xtriage
Total number of atoms	3395	wwPDB-VP
Average B, all atoms (Å ²)	27.0	wwPDB-VP

5 Model quality [i](#)

5.1 Standard geometry [i](#)

Bond lengths and bond angles in the following residue types are not validated in this section: 0FP

The Z score for a bond length (or angle) is the number of standard deviations the observed value is removed from the expected value. A bond length (or angle) with $|Z| > 5$ is considered an outlier worth inspection. RMSZ is the root-mean-square of all Z scores of the bond lengths (or angles).

Mol	Chain	Bond lengths		Bond angles	
		RMSZ	$\# Z > 5$	RMSZ	$\# Z > 5$
1	A	0.46	0/1656	0.70	0/2251
1	B	0.43	0/1721	0.68	0/2333
All	All	0.45	0/3377	0.69	0/4584

Chiral center outliers are detected by calculating the chiral volume of a chiral center and verifying if the center is modelled as a planar moiety or with the opposite hand. A planarity outlier is detected by checking planarity of atoms in a peptide group, atoms in a mainchain group or atoms of a sidechain that are expected to be planar.

Mol	Chain	#Chirality outliers	#Planarity outliers
1	A	0	1

There are no bond length outliers.

There are no bond angle outliers.

There are no chirality outliers.

All (1) planarity outliers are listed below:

Mol	Chain	Res	Type	Group
1	A	1230	TYR	Sidechain

5.2 Too-close contacts [i](#)

In the following table, the Non-H and H(model) columns list the number of non-hydrogen atoms and hydrogen atoms in the chain respectively. The H(added) column lists the number of hydrogen atoms added and optimized by MolProbity. The Clashes column lists the number of clashes within the asymmetric unit, whereas Symm-Clashes lists symmetry related clashes.

Mol	Chain	Non-H	H(model)	H(added)	Clashes	Symm-Clashes
1	A	1621	0	1585	194	0
1	B	1688	0	1662	118	0
2	A	43	0	49	9	0
2	B	43	0	49	4	0
All	All	3395	0	3345	299	0

The all-atom clashscore is defined as the number of clashes found per 1000 atoms (including hydrogen atoms). The all-atom clashscore for this structure is 44.

All (299) close contacts within the same asymmetric unit are listed below, sorted by their clash magnitude.

Atom-1	Atom-2	Interatomic distance (Å)	Clash overlap (Å)
1:B:1376:GLN:HE21	1:B:1376:GLN:HA	1.16	1.08
1:A:1192:ARG:HB2	1:A:1192:ARG:HH11	1.20	1.04
1:A:1027:PRO:HB2	1:A:1033:LEU:HD23	1.45	0.96
1:A:1234:ARG:HH22	1:B:1534:ARG:HH12	1.13	0.95
1:A:1133:LEU:HB3	1:A:1166:ARG:NH1	1.87	0.88
1:B:1401:SER:HB2	1:B:1407:VAL:HG11	1.55	0.86
1:B:1357:LEU:H	1:B:1357:LEU:HD12	1.42	0.85
1:A:1234:ARG:NH2	1:B:1534:ARG:HH12	1.77	0.82
1:A:1163:VAL:HG13	1:A:1234:ARG:HG3	1.58	0.82
1:B:1376:GLN:NE2	1:B:1376:GLN:HA	1.93	0.82
1:A:1133:LEU:HB3	1:A:1166:ARG:HH12	1.45	0.81
1:A:1234:ARG:HB3	1:A:1234:ARG:NH1	1.96	0.80
1:A:1184:PHE:HB2	1:A:1187:LEU:HD22	1.62	0.80
1:A:1183:ARG:HA	1:A:1183:ARG:HE	1.46	0.80
1:A:1099:ARG:O	1:A:1102:GLU:HB2	1.81	0.80
1:A:1118:ASP:O	1:A:1122:GLU:HG3	1.82	0.79
1:B:1463:VAL:CG2	1:B:1534:ARG:HG3	2.14	0.78
1:A:1078:VAL:O	1:A:1080:ASP:N	2.17	0.78
1:B:1385:LEU:HD11	1:B:1480:VAL:HG21	1.64	0.78
1:A:1182:GLN:HA	1:A:1192:ARG:HH21	1.49	0.77
1:A:1187:LEU:HB3	1:A:1192:ARG:HH12	1.49	0.77
1:A:1165:ARG:HG3	2:A:261:0FP:HA4	1.68	0.76
1:A:1192:ARG:CB	1:A:1192:ARG:HH11	1.99	0.75
1:B:1548:THR:HG21	1:B:1550:ARG:HH12	1.50	0.75
1:A:1022:ARG:NH1	1:A:1080:ASP:HB3	2.01	0.75
1:A:1163:VAL:HG21	1:A:1231:ILE:HG21	1.67	0.75
1:A:1063:HIS:NE2	2:A:261:0FP:O11	2.20	0.75
1:A:1234:ARG:HB3	1:A:1234:ARG:CZ	2.19	0.73
1:B:1463:VAL:HG21	1:B:1534:ARG:HG3	1.69	0.72
1:A:1182:GLN:HA	1:A:1192:ARG:NH2	2.05	0.71

Continued on next page...

Continued from previous page...

Atom-1	Atom-2	Interatomic distance (Å)	Clash overlap (Å)
1:A:1133:LEU:HD12	1:A:1134:SER:H	1.54	0.71
1:A:1027:PRO:CB	1:A:1033:LEU:HD23	2.21	0.71
1:B:1434:SER:OG	1:B:1456:LYS:HD3	1.90	0.71
1:A:1059:LEU:HG	1:A:1158:VAL:CG1	2.21	0.71
1:B:1397:VAL:HG13	1:B:1423:PHE:HD2	1.55	0.70
1:A:1134:SER:HA	2:A:261:0FP:O2	1.93	0.68
1:B:1311:VAL:O	1:B:1311:VAL:HG12	1.93	0.68
1:A:1163:VAL:CG1	1:A:1234:ARG:HG3	2.24	0.68
1:B:1385:LEU:CD1	1:B:1480:VAL:HG21	2.23	0.67
1:B:1470:LEU:HD21	1:B:1554:VAL:HG21	1.77	0.66
1:A:1060:ASN:C	1:A:1060:ASN:HD22	1.97	0.66
1:B:1536:PRO:HA	1:B:1539:ARG:NH1	2.12	0.65
1:A:1032:LEU:HD23	1:A:1032:LEU:H	1.61	0.65
1:B:1395:GLU:HA	1:B:1395:GLU:OE2	1.96	0.64
1:B:1336:ARG:HD2	1:B:1340:GLU:OE1	1.99	0.63
1:A:1057:LEU:HD12	1:A:1057:LEU:O	1.97	0.63
1:A:1187:LEU:HD13	1:A:1187:LEU:H	1.63	0.63
1:A:1029:GLU:CB	1:A:1032:LEU:HD21	2.28	0.63
1:A:1023:TYR:C	1:A:1025:GLN:H	2.03	0.62
1:B:1363:HIS:NE2	2:B:561:0FP:HB21	2.15	0.62
1:B:1533:GLU:C	1:B:1536:PRO:HD2	2.19	0.62
1:A:1167:ARG:HH12	1:A:1237:LYS:HD3	1.64	0.62
1:A:1180:VAL:O	1:A:1183:ARG:HB2	2.00	0.62
1:A:1160:LEU:HD22	1:A:1173:TYR:OH	2.00	0.62
1:A:1062:ASN:O	1:A:1063:HIS:HB2	2.00	0.61
1:B:1412:VAL:O	1:B:1414:PRO:HD2	2.00	0.61
1:A:1235:LEU:O	1:A:1239:ARG:N	2.27	0.61
1:B:1456:LYS:HG2	1:B:1457:HIS:ND1	2.15	0.61
1:A:1059:LEU:HD22	1:A:1160:LEU:HG	1.82	0.61
1:A:1168:GLY:N	1:A:1241:ASP:OD1	2.34	0.61
1:A:1066:THR:O	1:A:1216:SER:HB2	2.00	0.61
1:A:1023:TYR:O	1:A:1025:GLN:N	2.33	0.60
1:B:1479:TRP:CE2	1:B:1483:ARG:NH1	2.70	0.60
1:A:1105:GLU:HA	1:A:1108:SER:OG	2.01	0.60
1:B:1363:HIS:CE1	2:B:561:0FP:HB21	2.36	0.60
1:A:1229:LEU:O	1:B:1535:LEU:HD21	2.01	0.60
1:A:1179:TRP:NE1	1:A:1183:ARG:NH1	2.50	0.60
1:A:1095:GLU:HA	1:A:1095:GLU:OE1	2.01	0.60
1:A:1087:CYS:O	1:A:1089:THR:HG23	2.01	0.59
1:B:1533:GLU:O	1:B:1537:LYS:HB2	2.02	0.59
1:B:1397:VAL:HG13	1:B:1423:PHE:CD2	2.37	0.59

Continued on next page...

Continued from previous page...

Atom-1	Atom-2	Interatomic distance (Å)	Clash overlap (Å)
1:A:1248:THR:HG22	1:A:1249:GLU:N	2.18	0.59
1:A:1247:VAL:HG11	1:A:1254:VAL:HG21	1.84	0.58
1:A:1165:ARG:HG2	2:A:261:0FP:N21	2.18	0.58
1:B:1465:ARG:HD3	2:B:561:0FP:HA4	1.84	0.58
1:A:1183:ARG:CA	1:A:1183:ARG:HE	2.16	0.58
1:B:1316:VAL:HB	1:B:1473:TYR:CD1	2.38	0.58
1:A:1233:GLU:O	1:A:1236:PRO:HD2	2.03	0.57
1:B:1483:ARG:O	1:B:1547:VAL:HG22	2.04	0.57
1:A:1135:SER:HB3	1:A:1155:PHE:HA	1.87	0.57
1:A:1133:LEU:CD1	1:A:1134:SER:H	2.18	0.57
1:A:1237:LYS:O	1:A:1241:ASP:OD2	2.22	0.57
1:B:1407:VAL:HG12	1:B:1419:LYS:HD2	1.87	0.57
1:A:1135:SER:CB	1:A:1155:PHE:HA	2.35	0.56
1:A:1233:GLU:C	1:A:1236:PRO:HD2	2.26	0.56
1:A:1022:ARG:O	1:A:1025:GLN:HB2	2.04	0.56
1:B:1433:LEU:HD12	1:B:1434:SER:H	1.71	0.56
1:A:1133:LEU:N	2:A:261:0FP:HB22	2.21	0.56
1:A:1019:PHE:O	1:A:1169:THR:HG22	2.06	0.55
1:A:1187:LEU:CD1	1:A:1187:LEU:H	2.18	0.55
1:B:1515:ARG:HH11	1:B:1515:ARG:HG2	1.71	0.55
1:A:1112:VAL:HG21	1:A:1249:GLU:O	2.07	0.55
1:A:1075:MET:O	1:A:1076:GLN:HB2	2.07	0.55
1:A:1238:LEU:C	1:A:1240:TYR:H	2.08	0.55
1:A:1196:ARG:HG2	1:A:1196:ARG:O	2.06	0.55
1:A:1227:ASP:CG	1:B:1405:GLU:H	2.08	0.55
1:A:1072:VAL:O	1:A:1073:ALA:C	2.45	0.55
1:B:1535:LEU:N	1:B:1536:PRO:CD	2.69	0.54
1:A:1167:ARG:NE	1:A:1167:ARG:HA	2.22	0.54
1:B:1421:VAL:O	1:B:1425:SER:HB2	2.07	0.54
1:A:1023:TYR:CZ	1:A:1081:GLY:HA2	2.43	0.54
1:A:1021:ALA:HB2	1:A:1034:LEU:HD23	1.89	0.54
1:B:1361:ILE:HD13	1:B:1460:LEU:HB2	1.88	0.54
1:B:1366:THR:O	1:B:1515:ARG:HB2	2.07	0.54
1:B:1391:PRO:HD2	1:B:1512:ASP:CG	2.28	0.54
1:A:1165:ARG:CG	2:A:261:0FP:HA4	2.38	0.53
1:A:1104:SER:OG	1:A:1107:VAL:HG23	2.08	0.53
1:A:1059:LEU:HG	1:A:1158:VAL:HG12	1.89	0.53
1:B:1535:LEU:O	1:B:1539:ARG:HG3	2.08	0.53
1:B:1545:VAL:HG23	1:B:1547:VAL:H	1.74	0.53
1:B:1554:VAL:HG12	1:B:1555:LYS:N	2.23	0.53
1:B:1484:PHE:HB2	1:B:1487:LEU:HD12	1.91	0.53

Continued on next page...

Continued from previous page...

Atom-1	Atom-2	Interatomic distance (Å)	Clash overlap (Å)
1:B:1376:GLN:CA	1:B:1376:GLN:HE21	1.95	0.53
1:A:1183:ARG:O	1:A:1185:PRO:HD3	2.09	0.53
1:A:1218:SER:HB3	1:B:1519:TYR:CE1	2.44	0.53
1:A:1059:LEU:CD2	1:A:1160:LEU:HG	2.39	0.52
1:A:1057:LEU:CD1	1:A:1072:VAL:HB	2.39	0.52
1:A:1055:VAL:HG23	1:A:1056:ALA:N	2.23	0.52
1:A:1235:LEU:HB3	1:A:1239:ARG:NH2	2.24	0.52
1:A:1101:SER:HB2	1:A:1107:VAL:HG11	1.91	0.52
1:B:1404:SER:OG	1:B:1407:VAL:HG23	2.09	0.52
1:A:1043:LEU:HD23	1:A:1155:PHE:HE2	1.73	0.52
1:B:1438:CYS:O	1:B:1438:CYS:SG	2.68	0.52
1:A:1029:GLU:CB	1:A:1032:LEU:HD11	2.40	0.52
1:A:1060:ASN:C	1:A:1060:ASN:ND2	2.62	0.52
1:A:1166:ARG:O	1:A:1167:ARG:HG2	2.10	0.51
1:A:1177:PRO:O	1:A:1180:VAL:HB	2.10	0.51
1:A:1195:LEU:HA	1:A:1198:GLN:OE1	2.11	0.51
1:A:1172:VAL:HG12	1:A:1180:VAL:HG13	1.92	0.51
1:B:1335:PRO:HD2	1:B:1338:VAL:HG21	1.91	0.51
1:A:1192:ARG:HB2	1:A:1192:ARG:NH1	2.05	0.51
1:A:1177:PRO:O	1:A:1181:THR:HG23	2.09	0.51
1:A:1189:ALA:O	1:A:1192:ARG:HB3	2.11	0.51
1:A:1125:SER:HA	1:A:1173:TYR:CD2	2.46	0.51
1:B:1412:VAL:O	1:B:1414:PRO:CD	2.59	0.51
1:A:1104:SER:O	1:A:1107:VAL:N	2.42	0.50
1:A:1121:VAL:HG11	1:A:1253:TYR:CD2	2.46	0.50
1:B:1327:PRO:HG3	1:B:1333:LEU:HD23	1.93	0.50
1:A:1104:SER:O	1:A:1106:LEU:N	2.44	0.50
1:A:1057:LEU:HD13	1:A:1072:VAL:HB	1.92	0.50
1:A:1236:PRO:O	1:A:1238:LEU:N	2.45	0.49
1:A:1235:LEU:N	1:A:1235:LEU:HD22	2.27	0.49
1:A:1123:PHE:CE1	1:B:1526:VAL:HG21	2.47	0.49
1:A:1019:PHE:HE1	1:A:1022:ARG:NH2	2.10	0.49
1:B:1328:ASP:O	1:B:1329:GLU:HG3	2.12	0.49
1:A:1233:GLU:HB3	1:A:1236:PRO:HG2	1.94	0.49
1:B:1335:PRO:HD2	1:B:1338:VAL:CG2	2.43	0.49
1:A:1225:TYR:HE1	1:B:1522:LEU:CD2	2.25	0.49
1:A:1025:GLN:O	1:A:1027:PRO:HD3	2.13	0.49
1:A:1113:SER:CB	1:A:1114:PRO:CD	2.90	0.49
1:A:1073:ALA:HB3	1:A:1085:LEU:O	2.12	0.49
1:A:1038:VAL:HG12	1:A:1042:TRP:CG	2.47	0.49
1:A:1115:LEU:HG	1:A:1253:TYR:CE1	2.48	0.48

Continued on next page...

Continued from previous page...

Atom-1	Atom-2	Interatomic distance (Å)	Clash overlap (Å)
1:A:1113:SER:CB	1:A:1114:PRO:HD3	2.43	0.48
1:A:1176:ASP:O	1:A:1180:VAL:HG23	2.13	0.48
1:B:1476:ASP:HB3	1:B:1479:TRP:HB2	1.96	0.48
1:B:1488:THR:HG23	1:B:1491:ASP:OD1	2.13	0.48
1:B:1482:GLN:NE2	1:B:1492:ARG:NE	2.61	0.48
1:B:1315:TYR:CE1	1:B:1477:PRO:HD3	2.49	0.48
1:B:1357:LEU:HD21	1:B:1455:PHE:HB3	1.95	0.48
1:A:1039:VAL:O	1:A:1040:GLU:C	2.52	0.48
1:A:1074:ALA:HB2	1:A:1198:GLN:HB3	1.96	0.48
1:B:1484:PHE:HB2	1:B:1487:LEU:CD1	2.44	0.48
1:A:1043:LEU:HD23	1:A:1155:PHE:CE2	2.48	0.48
1:A:1170:LEU:HD12	1:A:1171:ALA:N	2.28	0.47
1:A:1062:ASN:O	1:A:1063:HIS:CB	2.60	0.47
1:B:1391:PRO:HD2	1:B:1512:ASP:OD1	2.13	0.47
1:A:1038:VAL:O	1:A:1041:HIS:HB3	2.14	0.47
1:B:1491:ASP:O	1:B:1495:LEU:HD12	2.15	0.47
1:B:1324:ASP:O	1:B:1325:GLN:HG2	2.15	0.47
1:A:1128:TYR:HA	1:A:1161:CYS:O	2.14	0.47
1:A:1027:PRO:HB2	1:A:1033:LEU:CD2	2.31	0.47
1:A:1099:ARG:O	1:A:1102:GLU:CB	2.58	0.47
1:A:1232:ARG:CD	1:B:1539:ARG:HH21	2.27	0.47
1:A:1059:LEU:HG	1:A:1158:VAL:HG11	1.97	0.47
1:A:1251:GLU:O	1:A:1252:SER:HB3	2.15	0.47
1:B:1323:TYR:CE2	1:B:1381:GLY:HA2	2.49	0.47
1:B:1401:SER:HB3	1:B:1423:PHE:HB2	1.96	0.47
1:B:1542:LYS:CG	1:B:1547:VAL:O	2.62	0.47
1:A:1007:GLN:HE21	1:A:1007:GLN:C	2.17	0.47
1:A:1134:SER:O	1:A:1156:LYS:CB	2.63	0.47
1:A:1239:ARG:HG2	1:A:1239:ARG:O	2.15	0.47
1:B:1323:TYR:CD2	1:B:1381:GLY:HA2	2.49	0.47
1:B:1546:GLY:O	1:B:1548:THR:N	2.48	0.46
1:B:1515:ARG:HG2	1:B:1515:ARG:NH1	2.29	0.46
1:A:1246:GLY:O	1:A:1247:VAL:C	2.53	0.46
1:B:1318:GLY:HA2	1:B:1484:PHE:CZ	2.51	0.46
1:B:1319:PHE:O	1:B:1469:THR:HG22	2.16	0.46
1:A:1031:GLU:O	1:A:1033:LEU:N	2.48	0.46
1:A:1032:LEU:O	1:A:1033:LEU:C	2.54	0.46
1:A:1097:VAL:HG13	1:A:1123:PHE:CD2	2.51	0.46
1:B:1396:ILE:HD13	1:B:1518:SER:HA	1.97	0.46
1:B:1542:LYS:HG2	1:B:1547:VAL:O	2.16	0.45
1:B:1327:PRO:CG	1:B:1333:LEU:HD23	2.45	0.45

Continued on next page...

Continued from previous page...

Atom-1	Atom-2	Interatomic distance (Å)	Clash overlap (Å)
1:B:1547:VAL:O	1:B:1547:VAL:HG12	2.15	0.45
1:A:1113:SER:HB2	1:A:1114:PRO:HD3	1.99	0.45
1:B:1462:SER:O	1:B:1463:VAL:HG22	2.17	0.45
1:B:1548:THR:HG21	1:B:1550:ARG:NH1	2.24	0.45
1:A:1034:LEU:CD1	1:A:1042:TRP:HZ3	2.29	0.45
1:A:1015:TYR:CD1	1:A:1177:PRO:HD3	2.52	0.45
1:B:1380:ASP:OD1	1:B:1486:ASP:OD2	2.35	0.45
1:A:1116:GLN:O	1:A:1116:GLN:HG3	2.16	0.45
1:A:1248:THR:HG22	1:A:1249:GLU:H	1.81	0.45
1:B:1487:LEU:O	1:B:1492:ARG:NH2	2.50	0.45
1:A:1118:ASP:OD1	1:A:1121:VAL:HG23	2.16	0.45
1:A:1224:ASN:O	1:A:1224:ASN:ND2	2.50	0.45
1:B:1477:PRO:O	1:B:1480:VAL:HG22	2.16	0.45
1:A:1190:ALA:HA	1:A:1193:ASP:OD2	2.17	0.45
1:B:1532:ARG:O	1:B:1533:GLU:HB2	2.17	0.45
1:A:1076:GLN:HE22	1:A:1194:GLY:C	2.20	0.45
1:A:1236:PRO:O	1:A:1237:LYS:C	2.53	0.45
1:B:1488:THR:O	1:B:1492:ARG:HG3	2.17	0.45
1:B:1397:VAL:HG21	1:B:1424:LEU:HD21	1.99	0.44
1:A:1078:VAL:HG11	1:A:1191:ASP:HB2	1.99	0.44
1:A:1129:ALA:O	1:A:1238:LEU:HD11	2.17	0.44
1:B:1361:ILE:HD11	1:B:1460:LEU:HD12	1.99	0.44
1:A:1058:PRO:HB2	1:A:1068:VAL:HG11	1.99	0.44
1:A:1075:MET:HG2	1:A:1084:CYS:CB	2.47	0.44
1:A:1227:ASP:OD1	1:B:1405:GLU:N	2.40	0.44
1:A:1227:ASP:OD2	1:B:1406:LEU:N	2.40	0.44
1:B:1361:ILE:CD1	1:B:1460:LEU:HD12	2.48	0.44
1:A:1197:ALA:O	1:A:1198:GLN:HG3	2.18	0.44
1:A:1168:GLY:HA2	1:A:1241:ASP:CB	2.48	0.44
1:B:1534:ARG:NH1	1:B:1534:ARG:HB3	2.32	0.44
1:B:1374:ALA:HB1	1:B:1495:LEU:HD23	1.99	0.44
1:A:1238:LEU:C	1:A:1240:TYR:N	2.71	0.43
1:A:1228:ALA:HA	1:A:1231:ILE:HG13	2.00	0.43
1:A:1239:ARG:HH11	1:A:1239:ARG:HG3	1.84	0.43
1:A:1230:TYR:HA	1:B:1535:LEU:HD21	2.00	0.43
1:B:1496:ARG:HE	1:B:1496:ARG:HB2	1.45	0.43
1:A:1187:LEU:N	1:A:1187:LEU:CD1	2.81	0.43
1:B:1483:ARG:HD3	1:B:1551:GLU:O	2.17	0.43
1:A:1234:ARG:HH21	1:A:1235:LEU:HD21	1.84	0.43
1:A:1165:ARG:HB2	2:A:261:0FP:HA4	2.01	0.43
1:A:1226:VAL:HG11	1:B:1423:PHE:CD1	2.53	0.43

Continued on next page...

Continued from previous page...

Atom-1	Atom-2	Interatomic distance (Å)	Clash overlap (Å)
1:B:1513:PRO:O	1:B:1515:ARG:NH1	2.51	0.43
1:A:1179:TRP:CD1	1:A:1183:ARG:NH1	2.87	0.43
1:B:1514:PHE:O	1:B:1515:ARG:NH1	2.49	0.43
1:A:1168:GLY:HA2	1:A:1241:ASP:HB3	2.00	0.43
1:A:1190:ALA:O	1:A:1193:ASP:OD1	2.36	0.43
1:B:1404:SER:CB	1:B:1407:VAL:HG23	2.49	0.43
1:B:1311:VAL:O	1:B:1311:VAL:CG1	2.64	0.43
1:A:1093:PHE:CE2	1:A:1097:VAL:HG21	2.53	0.43
1:A:1133:LEU:CG	1:A:1134:SER:N	2.81	0.42
1:A:1073:ALA:HB1	1:A:1199:TRP:HB3	2.00	0.42
1:A:1060:ASN:OD1	1:A:1063:HIS:HA	2.19	0.42
1:B:1541:ASP:O	1:B:1545:VAL:HG22	2.19	0.42
1:A:1214:PHE:CZ	1:A:1216:SER:HB3	2.54	0.42
1:B:1483:ARG:HA	1:B:1483:ARG:HE	1.84	0.42
1:A:1027:PRO:CG	1:A:1033:LEU:HD23	2.49	0.42
1:B:1332:LEU:HD22	1:B:1466:ARG:HG2	2.02	0.42
1:A:1023:TYR:C	1:A:1025:GLN:N	2.70	0.42
1:A:1063:HIS:ND1	1:A:1157:HIS:NE2	2.58	0.42
1:A:1135:SER:HB2	1:A:1155:PHE:HA	2.01	0.42
1:A:1090:SER:C	1:A:1092:ARG:H	2.23	0.42
1:A:1234:ARG:O	1:A:1238:LEU:HB2	2.20	0.42
1:B:1392:ARG:HG3	1:B:1392:ARG:HH11	1.85	0.42
1:A:1133:LEU:HG	1:A:1134:SER:N	2.35	0.42
1:A:1217:ASP:N	1:A:1217:ASP:OD2	2.52	0.42
1:A:1234:ARG:CB	1:A:1234:ARG:NH1	2.74	0.42
1:B:1540:TYR:O	1:B:1543:GLN:HG3	2.20	0.42
1:A:1165:ARG:HB2	2:A:261:0FP:O4	2.20	0.42
1:A:1234:ARG:HH12	1:B:1534:ARG:HH22	1.67	0.42
1:B:1467:ARG:CZ	1:B:1537:LYS:HG3	2.50	0.42
1:B:1357:LEU:HD23	1:B:1455:PHE:O	2.20	0.42
1:B:1482:GLN:HE21	1:B:1492:ARG:CD	2.32	0.42
1:B:1526:VAL:O	1:B:1529:LEU:N	2.53	0.42
1:A:1022:ARG:HG3	1:A:1244:LEU:HD23	2.02	0.41
1:A:1235:LEU:HD22	1:A:1235:LEU:H	1.85	0.41
1:A:1115:LEU:HA	1:A:1115:LEU:HD12	1.73	0.41
1:B:1437:ARG:O	1:B:1437:ARG:CG	2.68	0.41
1:A:1236:PRO:C	1:A:1238:LEU:N	2.72	0.41
1:A:1078:VAL:C	1:A:1080:ASP:N	2.74	0.41
1:A:1232:ARG:O	1:A:1233:GLU:C	2.58	0.41
1:B:1483:ARG:O	1:B:1485:PRO:HD3	2.21	0.41
1:B:1482:GLN:NE2	1:B:1492:ARG:CD	2.84	0.41

Continued on next page...

Continued from previous page...

Atom-1	Atom-2	Interatomic distance (Å)	Clash overlap (Å)
1:A:1060:ASN:HD21	1:A:1063:HIS:HA	1.86	0.41
1:A:1168:GLY:HA2	1:A:1241:ASP:OD1	2.21	0.41
1:B:1549:GLU:C	1:B:1551:GLU:H	2.23	0.41
1:B:1378:VAL:HG22	1:B:1381:GLY:O	2.20	0.41
1:A:1133:LEU:O	2:A:261:0FP:HB22	2.20	0.41
1:B:1437:ARG:O	1:B:1439:ASP:N	2.49	0.41
1:A:1022:ARG:HH12	1:A:1080:ASP:HB3	1.83	0.41
1:B:1549:GLU:HG3	1:B:1550:ARG:N	2.35	0.41
1:A:1234:ARG:NH2	1:A:1235:LEU:HD21	2.36	0.41
1:B:1463:VAL:O	2:B:561:0FP:HC5	2.21	0.41
1:B:1534:ARG:CZ	1:B:1534:ARG:HB3	2.50	0.41
1:A:1100:ALA:C	1:A:1102:GLU:H	2.25	0.41
1:A:1064:ASP:OD1	1:A:1066:THR:HG23	2.21	0.41
1:A:1248:THR:CG2	1:A:1249:GLU:N	2.83	0.41
1:A:1195:LEU:C	1:A:1197:ALA:H	2.24	0.40
1:A:1184:PHE:CD2	1:A:1245:VAL:HG21	2.56	0.40
1:A:1192:ARG:CG	1:A:1192:ARG:HH11	2.33	0.40
1:A:1100:ALA:C	1:A:1102:GLU:N	2.75	0.40
1:B:1357:LEU:CD2	1:B:1455:PHE:HB3	2.51	0.40
1:A:1069:VAL:O	1:A:1088:VAL:HA	2.21	0.40
1:A:1184:PHE:CE2	1:A:1245:VAL:HG21	2.56	0.40
1:A:1080:ASP:OD1	1:A:1186:ASP:OD2	2.39	0.40
1:A:1022:ARG:HG3	1:A:1244:LEU:CD2	2.52	0.40

There are no symmetry-related clashes.

5.3 Torsion angles [i](#)

5.3.1 Protein backbone [i](#)

In the following table, the Percentiles column shows the percent Ramachandran outliers of the chain as a percentile score with respect to all X-ray entries followed by that with respect to entries of similar resolution.

The Analysed column shows the number of residues for which the backbone conformation was analysed, and the total number of residues.

Mol	Chain	Analysed	Favoured	Allowed	Outliers	Percentiles	
1	A	202/256 (79%)	126 (62%)	48 (24%)	28 (14%)	0	1
1	B	209/256 (82%)	170 (81%)	29 (14%)	10 (5%)	3	17

Continued on next page...

Continued from previous page...

Mol	Chain	Analysed	Favoured	Allowed	Outliers	Percentiles
All	All	411/512 (80%)	296 (72%)	77 (19%)	38 (9%)	1 4

All (38) Ramachandran outliers are listed below:

Mol	Chain	Res	Type
1	A	1024	ASP
1	A	1030	ALA
1	A	1039	VAL
1	A	1073	ALA
1	A	1079	ARG
1	A	1113	SER
1	A	1166	ARG
1	B	1413	SER
1	B	1551	GLU
1	B	1554	VAL
1	A	1031	GLU
1	A	1032	LEU
1	A	1076	GLN
1	A	1105	GLU
1	A	1187	LEU
1	A	1247	VAL
1	B	1311	VAL
1	B	1547	VAL
1	A	1186	ASP
1	A	1239	ARG
1	A	1252	SER
1	B	1550	ARG
1	A	1196	ARG
1	A	1233	GLU
1	A	1236	PRO
1	A	1237	LYS
1	B	1336	ARG
1	B	1337	ASP
1	A	1156	LYS
1	A	1185	PRO
1	B	1522	LEU
1	A	1090	SER
1	A	1190	ALA
1	B	1523	GLY
1	A	1055	VAL
1	A	1111	PRO
1	A	1011	VAL

Continued on next page...

Continued from previous page...

Mol	Chain	Res	Type
1	A	1027	PRO

5.3.2 Protein sidechains ⓘ

In the following table, the Percentiles column shows the percent sidechain outliers of the chain as a percentile score with respect to all X-ray entries followed by that with respect to entries of similar resolution.

The Analysed column shows the number of residues for which the sidechain conformation was analysed, and the total number of residues.

Mol	Chain	Analysed	Rotameric	Outliers	Percentiles	
1	A	172/215 (80%)	148 (86%)	24 (14%)	4	19
1	B	181/215 (84%)	170 (94%)	11 (6%)	23	61
All	All	353/430 (82%)	318 (90%)	35 (10%)	10	35

All (35) residues with a non-rotameric sidechain are listed below:

Mol	Chain	Res	Type
1	A	1007	GLN
1	A	1011	VAL
1	A	1028	ASP
1	A	1032	LEU
1	A	1042	TRP
1	A	1055	VAL
1	A	1057	LEU
1	A	1059	LEU
1	A	1060	ASN
1	A	1066	THR
1	A	1085	LEU
1	A	1099	ARG
1	A	1115	LEU
1	A	1158	VAL
1	A	1161	CYS
1	A	1163	VAL
1	A	1183	ARG
1	A	1185	PRO
1	A	1186	ASP
1	A	1187	LEU
1	A	1191	ASP
1	A	1192	ARG

Continued on next page...

Continued from previous page...

Mol	Chain	Res	Type
1	A	1233	GLU
1	A	1251	GLU
1	B	1362	ASN
1	B	1365	ASP
1	B	1376	GLN
1	B	1384	CYS
1	B	1412	VAL
1	B	1435	SER
1	B	1439	ASP
1	B	1483	ARG
1	B	1532	ARG
1	B	1537	LYS
1	B	1548	THR

Some sidechains can be flipped to improve hydrogen bonding and reduce clashes. All (10) such sidechains are listed below:

Mol	Chain	Res	Type
1	A	1009	GLN
1	A	1025	GLN
1	A	1060	ASN
1	A	1076	GLN
1	A	1224	ASN
1	B	1325	GLN
1	B	1362	ASN
1	B	1376	GLN
1	B	1482	GLN
1	B	1524	ASN

5.3.3 RNA [i](#)

There are no RNA molecules in this entry.

5.4 Non-standard residues in protein, DNA, RNA chains [i](#)

There are no non-standard protein/DNA/RNA residues in this entry.

5.5 Carbohydrates [i](#)

There are no carbohydrates in this entry.

5.6 Ligand geometry

2 ligands are modelled in this entry.

In the following table, the Counts columns list the number of bonds (or angles) for which Mogul statistics could be retrieved, the number of bonds (or angles) that are observed in the model and the number of bonds (or angles) that are defined in the chemical component dictionary. The Link column lists molecule types, if any, to which the group is linked. The Z score for a bond length (or angle) is the number of standard deviations the observed value is removed from the expected value. A bond length (or angle) with $|Z| > 2$ is considered an outlier worth inspection. RMSZ is the root-mean-square of all Z scores of the bond lengths (or angles).

Mol	Type	Chain	Res	Link	Bond lengths			Bond angles		
					Counts	RMSZ	$\# Z > 2$	Counts	RMSZ	$\# Z > 2$
2	0FP	A	261	1	39,43,51	0.72	1 (2%)	51,62,71	1.27	4 (7%)
2	0FP	B	561	1	39,43,51	1.03	2 (5%)	51,62,71	0.98	4 (7%)

In the following table, the Chirals column lists the number of chiral outliers, the number of chiral centers analysed, the number of these observed in the model and the number defined in the chemical component dictionary. Similar counts are reported in the Torsion and Rings columns. '-' means no outliers of that kind were identified.

Mol	Type	Chain	Res	Link	Chirals	Torsions	Rings
2	0FP	A	261	1	-	0/62/62/72	0/1/1/1
2	0FP	B	561	1	-	0/62/62/72	0/1/1/1

All (3) bond length outliers are listed below:

Mol	Chain	Res	Type	Atoms	Z	Observed(Å)	Ideal(Å)
2	B	561	0FP	CE2-ND2	-2.64	1.37	1.46
2	A	261	0FP	C4-CA4	2.45	1.57	1.54
2	B	561	0FP	C4-CA4	3.53	1.58	1.54

All (8) bond angle outliers are listed below:

Mol	Chain	Res	Type	Atoms	Z	Observed(°)	Ideal(°)
2	A	261	0FP	CB2-CA2-C2	-6.89	105.86	112.83
2	B	561	0FP	CB2-CA2-C2	-3.79	108.99	112.83
2	B	561	0FP	CB1-CA1-C1	-2.62	110.18	112.83
2	B	561	0FP	CE2-ND2-CE1	-2.11	109.28	115.74
2	A	261	0FP	CB1-CA1-C1	-2.02	110.79	112.83
2	B	561	0FP	CE1-ND2-CG4	2.44	128.91	121.75
2	A	261	0FP	C4-C11-N21	2.50	119.88	116.33
2	A	261	0FP	C2-CA2-N1	3.32	116.03	108.94

There are no chirality outliers.

There are no torsion outliers.

There are no ring outliers.

2 monomers are involved in 13 short contacts:

Mol	Chain	Res	Type	Clashes	Symm-Clashes
2	A	261	0FP	9	0
2	B	561	0FP	4	0

5.7 Other polymers [i](#)

There are no such residues in this entry.

5.8 Polymer linkage issues [i](#)

There are no chain breaks in this entry.

6 Fit of model and data ⓘ

6.1 Protein, DNA and RNA chains ⓘ

EDS was not executed - this section will therefore be empty.

6.2 Non-standard residues in protein, DNA, RNA chains ⓘ

EDS was not executed - this section will therefore be empty.

6.3 Carbohydrates ⓘ

EDS was not executed - this section will therefore be empty.

6.4 Ligands ⓘ

EDS was not executed - this section will therefore be empty.

6.5 Other polymers ⓘ

EDS was not executed - this section will therefore be empty.