



# Full wwPDB X-ray Structure Validation Report ⓘ

Feb 1, 2016 – 05:54 PM GMT

PDB ID : 4JV0  
Title : Ring-Opening of the -OH-PdG Adduct in Ternary Complexes with the Sulfolobus solfataricus DNA polymerase Dpo4  
Authors : Banerjee, S.; Shanmugam, G.; Stone, M.P.  
Deposited on : 2013-03-25  
Resolution : 2.95 Å(reported)

This is a Full wwPDB X-ray Structure Validation Report for a publicly released PDB entry.  
We welcome your comments at [validation@mail.wwpdb.org](mailto:validation@mail.wwpdb.org)  
A user guide is available at  
<http://wwpdb.org/validation/2016/XrayValidationReportHelp>  
with specific help available everywhere you see the ⓘ symbol.

---

The following versions of software and data (see [references ⓘ](#)) were used in the production of this report:

MolProbity : 4.02b-467  
Mogul : 1.7 (RC4), CSD as536be (2015)  
Xtriage (Phenix) : 1.9-1692  
EDS : rb-20026688  
Percentile statistics : 20151230.v01 (using entries in the PDB archive December 30th 2015)  
Refmac : 5.8.0135  
CCP4 : 6.5.0  
Ideal geometry (proteins) : Engh & Huber (2001)  
Ideal geometry (DNA, RNA) : Parkinson et al. (1996)  
Validation Pipeline (wwPDB-VP) : trunk26865

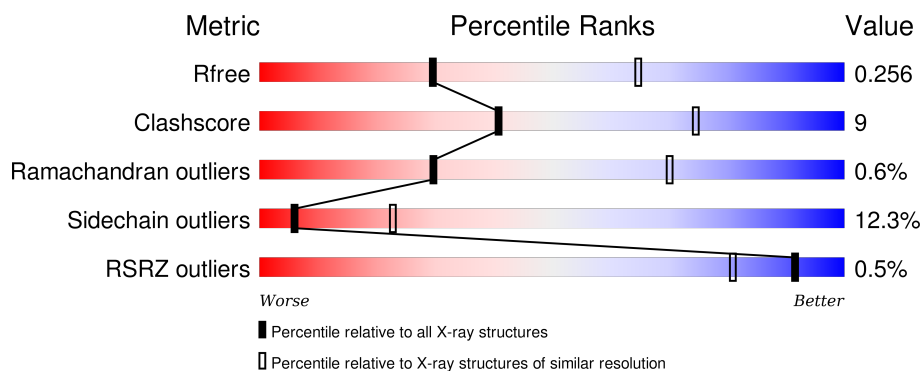
# 1 Overall quality at a glance

The following experimental techniques were used to determine the structure:

## *X-RAY DIFFRACTION*

The reported resolution of this entry is 2.95 Å.

Percentile scores (ranging between 0-100) for global validation metrics of the entry are shown in the following graphic. The table shows the number of entries on which the scores are based.



Metric	Whole archive (#Entries)	Similar resolution (#Entries, resolution range(Å))
$R_{free}$	91344	2184 (3.00-2.92)
Clashscore	102246	2552 (3.00-2.92)
Ramachandran outliers	100387	2468 (3.00-2.92)
Sidechain outliers	100360	2471 (3.00-2.92)
RSRZ outliers	91569	2201 (3.00-2.92)

The table below summarises the geometric issues observed across the polymeric chains and their fit to the electron density. The red, orange, yellow and green segments on the lower bar indicate the fraction of residues that contain outliers for  $\geq 3$ , 2, 1 and 0 types of geometric quality criteria. A grey segment represents the fraction of residues that are not modelled. The numeric value for each fraction is indicated below the corresponding segment, with a dot representing fractions  $\leq 5\%$ . The upper red bar (where present) indicates the fraction of residues that have poor fit to the electron density. The numeric value is given above the bar.

Mol	Chain	Length	Quality of chain
1	A	347	<div> <div></div> <div>69%</div> <div>26%</div> <div>..</div> </div>
2	B	15	<div> <div>27%</div> <div>67%</div> <div>7%</div> </div>
3	C	14	<div> <div>50%</div> <div>43%</div> <div>7%</div> </div>

## 2 Entry composition

There are 6 unique types of molecules in this entry. The entry contains 3415 atoms, of which 0 are hydrogens and 0 are deuteriums.

In the tables below, the ZeroOcc column contains the number of atoms modelled with zero occupancy, the AltConf column contains the number of residues with at least one atom in alternate conformation and the Trace column contains the number of residues modelled with at most 2 atoms.

- Molecule 1 is a protein called DNA polymerase IV.

Mol	Chain	Residues	Atoms					ZeroOcc	AltConf	Trace
1	A	341	Total	C	N	O	S	0	0	0
			2744	1760	472	505	7			

There are 6 discrepancies between the modelled and reference sequences:

Chain	Residue	Modelled	Actual	Comment	Reference
A	-5	HIS	-	EXPRESSION TAG	UNP Q97W02
A	-4	HIS	-	EXPRESSION TAG	UNP Q97W02
A	-3	HIS	-	EXPRESSION TAG	UNP Q97W02
A	-2	HIS	-	EXPRESSION TAG	UNP Q97W02
A	-1	HIS	-	EXPRESSION TAG	UNP Q97W02
A	0	HIS	-	EXPRESSION TAG	UNP Q97W02

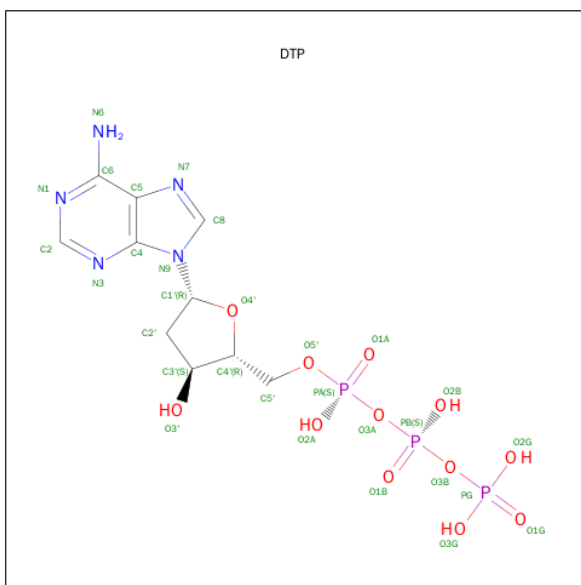
- Molecule 2 is a DNA chain called DNA (5'-D(P\*TP\*(KAG)P\*GP\*AP\*AP\*TP\*CP\*CP\*TP\*TP\*CP\*CP\*CP\*CP\*C)-3').

Mol	Chain	Residues	Atoms					ZeroOcc	AltConf	Trace
2	B	15	Total	C	N	O	P	0	0	0
			303	146	49	93	15			

- Molecule 3 is a DNA chain called DNA (5'-D(\*GP\*GP\*GP\*GP\*GP\*AP\*AP\*GP\*GP\*AP\*TP\*TP\*CP\*C)-3').

Mol	Chain	Residues	Atoms					ZeroOcc	AltConf	Trace
3	C	14	Total	C	N	O	P	0	0	0
			292	138	60	81	13			

- Molecule 4 is 2'-DEOXYADENOSINE 5'-TRIPHOSPHATE (three-letter code: DTP) (formula: C<sub>10</sub>H<sub>16</sub>N<sub>5</sub>O<sub>12</sub>P<sub>3</sub>).



Mol	Chain	Residues	Atoms					ZeroOcc	AltConf
4	A	1	Total	C	N	O	P	0	0
			30	10	5	12	3		

- Molecule 5 is CALCIUM ION (three-letter code: CA) (formula: Ca).

Mol	Chain	Residues	Atoms	ZeroOcc	AltConf
5	A	2	Total Ca 2 2	0	0

- Molecule 6 is water.

Mol	Chain	Residues	Atoms	ZeroOcc	AltConf
6	A	25	Total O 25 25	0	0
6	B	11	Total O 11 11	0	0
6	C	8	Total O 8 8	0	0



## 4 Data and refinement statistics

Property	Value	Source
Space group	P 21 21 2	Depositor
Cell constants a, b, c, $\alpha$ , $\beta$ , $\gamma$	93.83Å 104.49Å 52.53Å 90.00° 90.00° 90.00°	Depositor
Resolution (Å)	34.91 – 2.95 45.83 – 2.90	Depositor EDS
% Data completeness (in resolution range)	98.1 (34.91-2.95) 93.3 (45.83-2.90)	Depositor EDS
$R_{merge}$	0.12	Depositor
$R_{sym}$	(Not available)	Depositor
$\langle I/\sigma(I) \rangle$ <sup>1</sup>	3.18 (at 2.91Å)	Xtriage
Refinement program	PHENIX (PHENIX.REFINE: 1.7.2_869)	Depositor
R, $R_{free}$	0.192 , 0.270 0.186 , 0.256	Depositor DCC
$R_{free}$ test set	1118 reflections (11.49%)	DCC
Wilson B-factor (Å <sup>2</sup> )	68.4	Xtriage
Anisotropy	0.410	Xtriage
Bulk solvent $k_{sol}$ (e/Å <sup>3</sup> ), $B_{sol}$ (Å <sup>2</sup> )	0.32 , 40.8	EDS
Estimated twinning fraction	No twinning to report.	Xtriage
L-test for twinning <sup>2</sup>	$\langle  L  \rangle = 0.48$ , $\langle L^2 \rangle = 0.31$	Xtriage
Outliers	0 of 11564 reflections	Xtriage
$F_o, F_c$ correlation	0.95	EDS
Total number of atoms	3415	wwPDB-VP
Average B, all atoms (Å <sup>2</sup> )	71.0	wwPDB-VP

Xtriage's analysis on translational NCS is as follows: *The largest off-origin peak in the Patterson function is 5.30% of the height of the origin peak. No significant pseudotranslation is detected.*

<sup>1</sup>Intensities estimated from amplitudes.

<sup>2</sup>Theoretical values of  $\langle |L| \rangle$ ,  $\langle L^2 \rangle$  for acentric reflections are 0.5, 0.375 respectively for untwinned datasets, and 0.333, 0.2 for perfectly twinned datasets.

## 5 Model quality [i](#)

### 5.1 Standard geometry [i](#)

Bond lengths and bond angles in the following residue types are not validated in this section: CA, DTP, KAG

The Z score for a bond length (or angle) is the number of standard deviations the observed value is removed from the expected value. A bond length (or angle) with  $|Z| > 5$  is considered an outlier worth inspection. RMSZ is the root-mean-square of all Z scores of the bond lengths (or angles).

Mol	Chain	Bond lengths		Bond angles	
		RMSZ	# Z  >5	RMSZ	# Z  >5
1	A	0.60	0/2783	0.68	0/3736
2	B	0.90	0/306	1.97	12/465 (2.6%)
3	C	0.91	0/329	1.70	5/508 (1.0%)
All	All	0.67	0/3418	1.03	17/4709 (0.4%)

There are no bond length outliers.

All (17) bond angle outliers are listed below:

Mol	Chain	Res	Type	Atoms	Z	Observed(°)	Ideal(°)
3	C	32	DC	O4'-C1'-N1	11.41	115.99	108.00
2	B	7	DA	O4'-C1'-C2'	-9.76	98.09	105.90
3	C	31	DC	O4'-C1'-N1	9.06	114.34	108.00
2	B	17	DC	O4'-C1'-N1	8.69	114.08	108.00
2	B	7	DA	O4'-C1'-N9	8.62	114.03	108.00
2	B	8	DA	O4'-C1'-N9	-7.77	102.56	108.00
2	B	15	DC	C1'-O4'-C4'	-7.35	102.75	110.10
2	B	11	DC	O4'-C1'-N1	7.06	112.94	108.00
2	B	15	DC	O4'-C4'-C3'	-7.03	101.69	104.50
2	B	7	DA	C1'-O4'-C4'	-6.79	103.31	110.10
2	B	12	DT	N3-C4-O4	6.49	123.80	119.90
3	C	22	DG	O4'-C1'-N9	6.02	112.21	108.00
2	B	9	DT	C6-C5-C7	-5.69	119.49	122.90
2	B	18	DC	C3'-C2'-C1'	-5.35	96.08	102.50
2	B	10	DC	C1'-O4'-C4'	-5.29	104.81	110.10
3	C	21	DG	O4'-C1'-N9	5.05	111.53	108.00
3	C	30	DT	C5-C4-O4	-5.01	121.39	124.90

There are no chirality outliers.

There are no planarity outliers.

## 5.2 Too-close contacts ⓘ

In the following table, the Non-H and H(model) columns list the number of non-hydrogen atoms and hydrogen atoms in the chain respectively. The H(added) column lists the number of hydrogen atoms added and optimized by MolProbity. The Clashes column lists the number of clashes within the asymmetric unit, whereas Symm-Clashes lists symmetry related clashes.

Mol	Chain	Non-H	H(model)	H(added)	Clashes	Symm-Clashes
1	A	2744	0	2889	50	0
2	B	303	0	172	4	0
3	C	292	0	158	3	0
4	A	30	0	12	2	0
5	A	2	0	0	0	0
6	A	25	0	0	9	0
6	B	11	0	0	0	0
6	C	8	0	0	0	0
All	All	3415	0	3231	55	0

The all-atom clashscore is defined as the number of clashes found per 1000 atoms (including hydrogen atoms). The all-atom clashscore for this structure is 9.

All (55) close contacts within the same asymmetric unit are listed below, sorted by their clash magnitude.

Atom-1	Atom-2	Interatomic distance (Å)	Clash overlap (Å)
1:A:36:ARG:NH2	1:A:254:ASN:OD1	2.07	0.87
1:A:242:ARG:NH1	2:B:8:DA:OP1	2.10	0.84
1:A:106:GLU:OE1	6:A:1122:HOH:O	2.00	0.78
1:A:267:ARG:NH2	6:A:1111:HOH:O	2.18	0.75
1:A:2:ILE:O	6:A:1123:HOH:O	2.05	0.73
1:A:111:ILE:N	6:A:1123:HOH:O	2.19	0.70
3:C:23:DG:H2'	3:C:24:DA:C8	2.28	0.69
4:A:1000:DTP:O1A	6:A:1122:HOH:O	2.12	0.67
1:A:285:HIS:HD2	6:A:1115:HOH:O	1.79	0.66
1:A:199:ILE:HG23	1:A:204:ASP:HB2	1.79	0.64
1:A:180:ILE:HD13	1:A:194:LEU:HD13	1.79	0.63
1:A:79:GLU:H	1:A:79:GLU:CD	2.00	0.63
1:A:202:LEU:O	1:A:205:THR:OG1	2.16	0.63
1:A:145:SER:OG	1:A:146:LYS:N	2.33	0.61
1:A:129:LYS:NZ	1:A:162:GLY:O	2.34	0.60
1:A:98:LYS:HB2	1:A:110:ASP:HB3	1.83	0.59
1:A:100:GLU:HB2	1:A:237:ILE:HG23	1.86	0.58
1:A:12:TYR:OH	1:A:78:LYS:HE3	2.04	0.57
1:A:294:ASP:OD2	6:A:1116:HOH:O	2.18	0.56

*Continued on next page...*



*Continued from previous page...*

Atom-1	Atom-2	Interatomic distance (Å)	Clash overlap (Å)
1:A:256:ARG:NH1	1:A:326:ASP:O	2.36	0.56
1:A:242:ARG:HH12	2:B:8:DA:P	2.30	0.55
1:A:168:ASP:OD1	1:A:168:ASP:N	2.39	0.54
1:A:147:ASN:HD21	1:A:150:PHE:HD2	1.57	0.53
1:A:191:ALA:O	1:A:195:LYS:HD3	2.09	0.52
1:A:265:LEU:O	1:A:269:ILE:HG13	2.11	0.51
4:A:1000:DTP:H8	3:C:32:DC:H2"	1.93	0.50
1:A:118:TYR:CE2	1:A:167:ASP:HA	2.48	0.49
1:A:175:ILE:HD13	1:A:229:ALA:HA	1.95	0.49
1:A:67:ILE:HG22	1:A:68:LEU:HG	1.95	0.49
1:A:247:ARG:NE	1:A:271:GLU:OE1	2.45	0.48
1:A:48:TYR:HB3	6:A:1125:HOH:O	2.13	0.48
1:A:10:TYR:CE2	1:A:14:GLN:HB2	2.49	0.47
1:A:1:MET:N	6:A:1106:HOH:O	2.21	0.47
1:A:59:ILE:HD11	1:A:64:ALA:HB2	1.96	0.47
1:A:242:ARG:NH1	1:A:242:ARG:HA	2.30	0.46
1:A:142:VAL:O	1:A:163:ILE:HA	2.16	0.46
1:A:309:GLU:OE1	1:A:309:GLU:N	2.38	0.45
1:A:174:LEU:O	1:A:178:LEU:HB2	2.16	0.45
1:A:80:VAL:O	1:A:84:VAL:HG23	2.16	0.45
1:A:210:PHE:CE2	1:A:214:LYS:HE3	2.52	0.45
1:A:126:LEU:HD21	1:A:163:ILE:HG21	1.99	0.44
2:B:4:DT:H2"	2:B:5:KAG:H8	2.00	0.44
1:A:124:LEU:HD12	1:A:124:LEU:HA	1.80	0.43
1:A:46:ALA:HB1	1:A:50:ALA:HB3	2.01	0.42
1:A:14:GLN:OE1	1:A:139:THR:HG23	2.19	0.42
1:A:10:TYR:CD2	1:A:14:GLN:HB2	2.54	0.42
1:A:158:ALA:O	1:A:162:GLY:HA3	2.18	0.42
1:A:318:LEU:O	1:A:322:ILE:HG13	2.20	0.42
2:B:5:KAG:H1	3:C:32:DC:H42	1.67	0.42
1:A:122:TYR:HE1	1:A:126:LEU:HD11	1.84	0.41
1:A:291:GLU:OE1	1:A:329:LYS:HB2	2.20	0.41
1:A:15:VAL:HG11	1:A:81:TYR:HD1	1.85	0.41
1:A:96:SER:HA	1:A:114:LYS:HE2	2.03	0.40
1:A:312:TYR:O	1:A:316:VAL:HG23	2.21	0.40
1:A:210:PHE:HE2	1:A:214:LYS:HE3	1.87	0.40

There are no symmetry-related clashes.

## 5.3 Torsion angles [i](#)

### 5.3.1 Protein backbone [i](#)

In the following table, the Percentiles column shows the percent Ramachandran outliers of the chain as a percentile score with respect to all X-ray entries followed by that with respect to entries of similar resolution.

The Analysed column shows the number of residues for which the backbone conformation was analysed, and the total number of residues.

Mol	Chain	Analysed	Favoured	Allowed	Outliers	Percentiles
1	A	339/347 (98%)	319 (94%)	18 (5%)	2 (1%)	30 70

All (2) Ramachandran outliers are listed below:

Mol	Chain	Res	Type
1	A	10	TYR
1	A	277	ASP

### 5.3.2 Protein sidechains [i](#)

In the following table, the Percentiles column shows the percent sidechain outliers of the chain as a percentile score with respect to all X-ray entries followed by that with respect to entries of similar resolution.

The Analysed column shows the number of residues for which the sidechain conformation was analysed, and the total number of residues.

Mol	Chain	Analysed	Rotameric	Outliers	Percentiles
1	A	300/306 (98%)	263 (88%)	37 (12%)	6 23

All (37) residues with a non-rotameric sidechain are listed below:

Mol	Chain	Res	Type
1	A	1	MET
1	A	4	LEU
1	A	22	SER
1	A	24	LYS
1	A	49	GLU
1	A	63	GLU
1	A	72	VAL
1	A	79	GLU
1	A	91	LEU

*Continued on next page...*

*Continued from previous page...*

Mol	Chain	Res	Type
1	A	105	ASP
1	A	119	ARG
1	A	120	GLU
1	A	131	LYS
1	A	134	GLU
1	A	139	THR
1	A	146	LYS
1	A	168	ASP
1	A	173	ARG
1	A	177	GLU
1	A	178	LEU
1	A	192	GLU
1	A	197	LEU
1	A	199	ILE
1	A	202	LEU
1	A	205	THR
1	A	211	ASP
1	A	238	ARG
1	A	240	ARG
1	A	241	VAL
1	A	242	ARG
1	A	247	ARG
1	A	273	TYR
1	A	278	LYS
1	A	279	ARG
1	A	293	LEU
1	A	308	LYS
1	A	313	SER

Some sidechains can be flipped to improve hydrogen bonding and reduce clashes. All (1) such sidechains are listed below:

Mol	Chain	Res	Type
1	A	304	HIS

### 5.3.3 RNA ⓘ

There are no RNA molecules in this entry.

## 5.4 Non-standard residues in protein, DNA, RNA chains ⓘ

1 non-standard protein/DNA/RNA residue is modelled in this entry.

In the following table, the Counts columns list the number of bonds (or angles) for which Mogul statistics could be retrieved, the number of bonds (or angles) that are observed in the model and the number of bonds (or angles) that are defined in the chemical component dictionary. The Link column lists molecule types, if any, to which the group is linked. The Z score for a bond length (or angle) is the number of standard deviations the observed value is removed from the expected value. A bond length (or angle) with  $|Z| > 2$  is considered an outlier worth inspection. RMSZ is the root-mean-square of all Z scores of the bond lengths (or angles).

Mol	Type	Chain	Res	Link	Bond lengths			Bond angles		
					Counts	RMSZ	# $ Z  > 2$	Counts	RMSZ	# $ Z  > 2$
2	KAG	B	5	3,2	20,28,30	2.49	7 (35%)	24,39,44	3.07	11 (45%)

In the following table, the Chirals column lists the number of chiral outliers, the number of chiral centers analysed, the number of these observed in the model and the number defined in the chemical component dictionary. Similar counts are reported in the Torsion and Rings columns. '-' means no outliers of that kind were identified.

Mol	Type	Chain	Res	Link	Chirals	Torsions	Rings
2	KAG	B	5	3,2	-	0/7/26/29	0/3/3/3

All (7) bond length outliers are listed below:

Mol	Chain	Res	Type	Atoms	Z	Observed(Å)	Ideal(Å)
2	B	5	KAG	C2'-C3'	-4.29	1.41	1.52
2	B	5	KAG	C1A-C2B	-2.69	1.50	1.53
2	B	5	KAG	O4'-C4'	-2.37	1.39	1.45
2	B	5	KAG	C6-N1	2.11	1.37	1.33
2	B	5	KAG	O2G-C3G	3.14	1.40	1.19
2	B	5	KAG	C2-N2	5.28	1.43	1.34
2	B	5	KAG	O6-C6	6.20	1.39	1.24

All (11) bond angle outliers are listed below:

Mol	Chain	Res	Type	Atoms	Z	Observed(°)	Ideal(°)
2	B	5	KAG	C1'-N9-C4	-3.85	120.63	127.16
2	B	5	KAG	C5-C6-N1	-2.76	119.82	123.59
2	B	5	KAG	N3-C2-N1	-2.52	122.35	126.22
2	B	5	KAG	C6-C5-C4	-2.47	117.95	120.90
2	B	5	KAG	C1A-N2-C2	-2.28	119.48	123.80
2	B	5	KAG	C4-C5-N7	-2.20	107.45	109.48
2	B	5	KAG	C6-N1-C2	2.61	119.11	115.31

*Continued on next page...*

*Continued from previous page...*

Mol	Chain	Res	Type	Atoms	Z	Observed(°)	Ideal(°)
2	B	5	KAG	N2-C2-N1	2.66	122.22	117.21
2	B	5	KAG	C2B-C1A-N2	4.95	118.01	110.16
2	B	5	KAG	C2-N3-C4	5.35	121.53	115.09
2	B	5	KAG	C1A-C2B-C3G	9.79	121.35	111.95

There are no chirality outliers.

There are no torsion outliers.

There are no ring outliers.

1 monomer is involved in 2 short contacts:

Mol	Chain	Res	Type	Clashes	Symm-Clashes
2	B	5	KAG	2	0

## 5.5 Carbohydrates [i](#)

There are no carbohydrates in this entry.

## 5.6 Ligand geometry [i](#)

Of 3 ligands modelled in this entry, 2 are monoatomic - leaving 1 for Mogul analysis.

In the following table, the Counts columns list the number of bonds (or angles) for which Mogul statistics could be retrieved, the number of bonds (or angles) that are observed in the model and the number of bonds (or angles) that are defined in the chemical component dictionary. The Link column lists molecule types, if any, to which the group is linked. The Z score for a bond length (or angle) is the number of standard deviations the observed value is removed from the expected value. A bond length (or angle) with  $|Z| > 2$  is considered an outlier worth inspection. RMSZ is the root-mean-square of all Z scores of the bond lengths (or angles).

Mol	Type	Chain	Res	Link	Bond lengths			Bond angles		
					Counts	RMSZ	$\# Z  > 2$	Counts	RMSZ	$\# Z  > 2$
4	DTP	A	1000	5	24,32,32	1.41	4 (16%)	32,50,50	1.85	5 (15%)

In the following table, the Chirals column lists the number of chiral outliers, the number of chiral centers analysed, the number of these observed in the model and the number defined in the chemical component dictionary. Similar counts are reported in the Torsion and Rings columns. '-' means no outliers of that kind were identified.

Mol	Type	Chain	Res	Link	Chirals	Torsions	Rings
4	DTP	A	1000	5	-	0/18/34/34	0/3/3/3

All (4) bond length outliers are listed below:

Mol	Chain	Res	Type	Atoms	Z	Observed(Å)	Ideal(Å)
4	A	1000	DTP	O3'-C3'	-2.10	1.38	1.43
4	A	1000	DTP	C3'-C4'	-2.05	1.47	1.53
4	A	1000	DTP	C5'-C4'	-2.04	1.45	1.51
4	A	1000	DTP	C6-N6	4.29	1.48	1.34

All (5) bond angle outliers are listed below:

Mol	Chain	Res	Type	Atoms	Z	Observed(°)	Ideal(°)
4	A	1000	DTP	N3-C2-N1	-7.85	122.88	128.89
4	A	1000	DTP	C4-C5-N7	-2.91	106.80	109.48
4	A	1000	DTP	O3A-PA-O5'	2.25	108.90	102.94
4	A	1000	DTP	O4'-C1'-N9	2.37	111.82	107.72
4	A	1000	DTP	O5'-C5'-C4'	2.48	118.26	109.12

There are no chirality outliers.

There are no torsion outliers.

There are no ring outliers.

1 monomer is involved in 2 short contacts:

Mol	Chain	Res	Type	Clashes	Symm-Clashes
4	A	1000	DTP	2	0

## 5.7 Other polymers [i](#)

There are no such residues in this entry.

## 5.8 Polymer linkage issues [i](#)

There are no chain breaks in this entry.

## 6 Fit of model and data [i](#)

### 6.1 Protein, DNA and RNA chains [i](#)

In the following table, the column labelled ‘#RSRZ> 2’ contains the number (and percentage) of RSRZ outliers, followed by percent RSRZ outliers for the chain as percentile scores relative to all X-ray entries and entries of similar resolution. The OWAB column contains the minimum, median, 95<sup>th</sup> percentile and maximum values of the occupancy-weighted average B-factor per residue. The column labelled ‘Q< 0.9’ lists the number of (and percentage) of residues with an average occupancy less than 0.9.

Mol	Chain	Analysed	<RSRZ>	#RSRZ>2	OWAB(Å <sup>2</sup> )	Q<0.9
1	A	341/347 (98%)	0.09	2 (0%) 90 78	51, 68, 91, 104	0
2	B	14/15 (93%)	-0.53	0 100 100	58, 71, 85, 87	0
3	C	14/14 (100%)	-0.63	0 100 100	58, 66, 93, 93	0
All	All	369/376 (98%)	0.04	2 (0%) 91 81	51, 69, 92, 104	0

All (2) RSRZ outliers are listed below:

Mol	Chain	Res	Type	RSRZ
1	A	113	ASP	2.1
1	A	205	THR	2.0

### 6.2 Non-standard residues in protein, DNA, RNA chains [i](#)

In the following table, the Atoms column lists the number of modelled atoms in the group and the number defined in the chemical component dictionary. LLDF column lists the quality of electron density of the group with respect to its neighbouring residues in protein, DNA or RNA chains. The B-factors column lists the minimum, median, 95<sup>th</sup> percentile and maximum values of B factors of atoms in the group. The column labelled ‘Q< 0.9’ lists the number of atoms with occupancy less than 0.9.

Mol	Type	Chain	Res	Atoms	RSCC	RSR	LLDF	B-factors(Å <sup>2</sup> )	Q<0.9
2	KAG	B	5	26/28	0.95	0.15	-	58,66,74,74	0

### 6.3 Carbohydrates [i](#)

There are no carbohydrates in this entry.

## 6.4 Ligands [i](#)

In the following table, the Atoms column lists the number of modelled atoms in the group and the number defined in the chemical component dictionary. LLDF column lists the quality of electron density of the group with respect to its neighbouring residues in protein, DNA or RNA chains. The B-factors column lists the minimum, median, 95<sup>th</sup> percentile and maximum values of B factors of atoms in the group. The column labelled 'Q< 0.9' lists the number of atoms with occupancy less than 0.9.

Mol	Type	Chain	Res	Atoms	RSCC	RSR	LLDF	B-factors(Å <sup>2</sup> )	Q<0.9
5	CA	A	1001	1/1	0.97	0.18	-0.40	68,68,68,68	0
4	DTP	A	1000	30/30	0.95	0.16	-0.91	56,62,79,88	0
5	CA	A	1002	1/1	0.89	0.24	-	75,75,75,75	0

## 6.5 Other polymers [i](#)

There are no such residues in this entry.