



Full wwPDB X-ray Structure Validation Report ⓘ

Jan 31, 2016 – 08:22 PM GMT

PDB ID : 1JZR
Title : Ure2p in complex with glutathione
Authors : Bousset, L.; Belrhali, H.; Melki, R.; Morera, S.
Deposited on : 2001-09-17
Resolution : 2.90 Å(reported)

This is a Full wwPDB X-ray Structure Validation Report for a publicly released PDB entry.
We welcome your comments at validation@mail.wwpdb.org
A user guide is available at
<http://wwpdb.org/validation/2016/XrayValidationReportHelp>
with specific help available everywhere you see the ⓘ symbol.

The following versions of software and data (see [references ⓘ](#)) were used in the production of this report:

MolProbity : 4.02b-467
Mogul : 1.7 (RC4), CSD as536be (2015)
Xtriage (Phenix) : 1.9-1692
EDS : rb-20026688
Percentile statistics : 20151230.v01 (using entries in the PDB archive December 30th 2015)
Refmac : 5.8.0135
CCP4 : 6.5.0
Ideal geometry (proteins) : Engh & Huber (2001)
Ideal geometry (DNA, RNA) : Parkinson et al. (1996)
Validation Pipeline (wwPDB-VP) : trunk26865

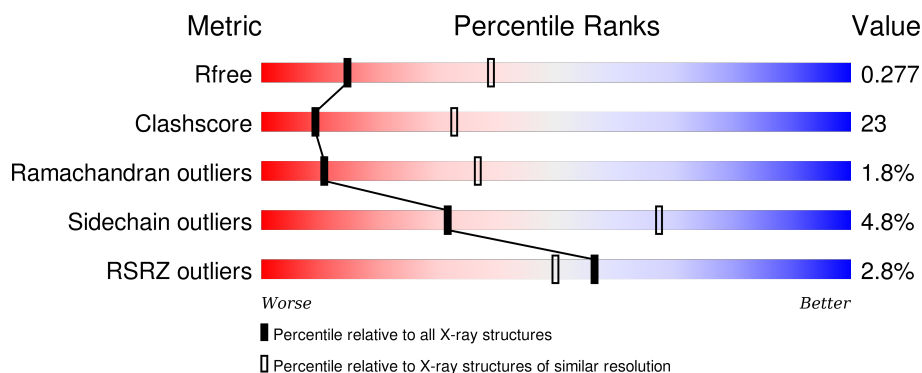
1 Overall quality at a glance

The following experimental techniques were used to determine the structure:

X-RAY DIFFRACTION

The reported resolution of this entry is 2.90 Å.

Percentile scores (ranging between 0-100) for global validation metrics of the entry are shown in the following graphic. The table shows the number of entries on which the scores are based.



Metric	Whole archive (#Entries)	Similar resolution (#Entries, resolution range(Å))
R_{free}	91344	1451 (2.90-2.90)
Clashscore	102246	1668 (2.90-2.90)
Ramachandran outliers	100387	1630 (2.90-2.90)
Sidechain outliers	100360	1632 (2.90-2.90)
RSRZ outliers	91569	1456 (2.90-2.90)

The table below summarises the geometric issues observed across the polymeric chains and their fit to the electron density. The red, orange, yellow and green segments on the lower bar indicate the fraction of residues that contain outliers for ≥ 3 , 2, 1 and 0 types of geometric quality criteria. A grey segment represents the fraction of residues that are not modelled. The numeric value for each fraction is indicated below the corresponding segment, with a dot representing fractions $\leq 5\%$. The upper red bar (where present) indicates the fraction of residues that have poor fit to the electron density. The numeric value is given above the bar.

Mol	Chain	Length	Quality of chain
1	A	260	<div> <div>5%</div> <div>48%</div> <div>39%</div> <div>10%</div> </div>
1	B	260	<div> <div>5%</div> <div>51%</div> <div>38%</div> <div>7%</div> </div>
1	C	260	<div> <div>55%</div> <div>40%</div> <div>• •</div> </div>
1	D	260	<div> <div>%</div> <div>62%</div> <div>35%</div> <div>•</div> </div>

2 Entry composition [i](#)

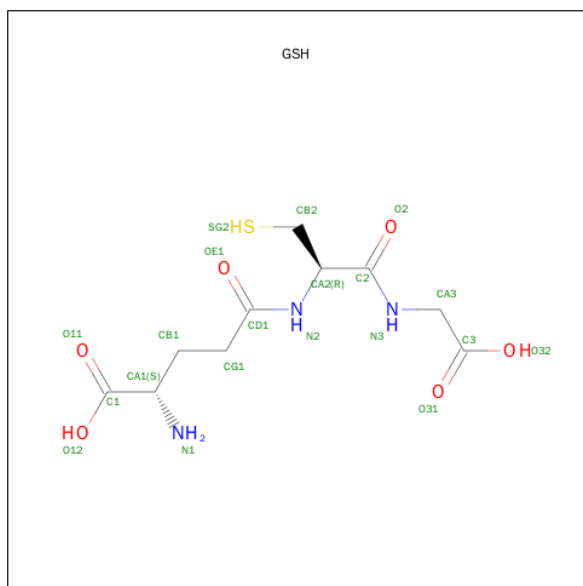
There are 2 unique types of molecules in this entry. The entry contains 8097 atoms, of which 0 are hydrogens and 0 are deuteriums.

In the tables below, the ZeroOcc column contains the number of atoms modelled with zero occupancy, the AltConf column contains the number of residues with at least one atom in alternate conformation and the Trace column contains the number of residues modelled with at most 2 atoms.

- Molecule 1 is a protein called URE2 PROTEIN.

Mol	Chain	Residues	Atoms					ZeroOcc	AltConf	Trace
1	A	234	Total	C	N	O	S	0	0	0
			1907	1236	329	336	6			
1	B	242	Total	C	N	O	S	0	0	0
			1981	1286	340	349	6			
1	C	255	Total	C	N	O	S	0	0	0
			2065	1333	355	370	7			
1	D	259	Total	C	N	O	S	0	0	0
			2104	1358	361	378	7			

- Molecule 2 is GLUTATHIONE (three-letter code: GSH) (formula: C₁₀H₁₇N₃O₆S).

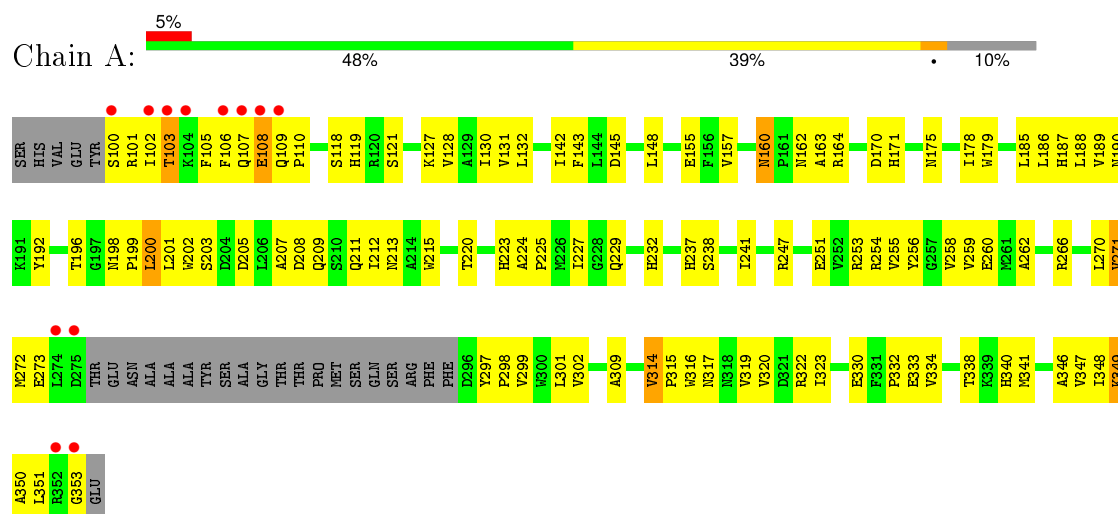


Mol	Chain	Residues	Atoms					ZeroOcc	AltConf
2	A	1	Total	C	N	O	S	0	0
			20	10	3	6	1		
2	C	1	Total	C	N	O	S	0	0
			20	10	3	6	1		

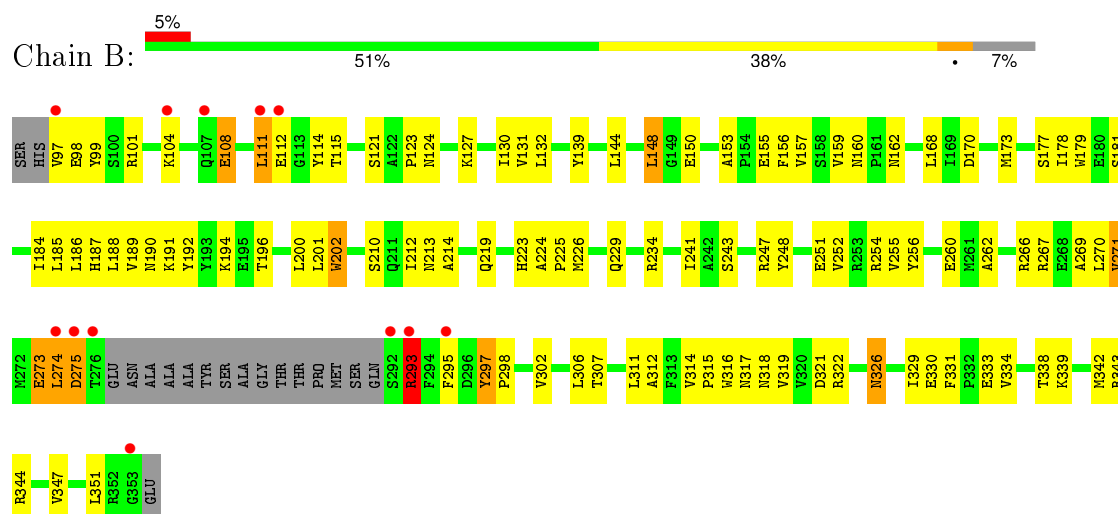
3 Residue-property plots [i](#)

These plots are drawn for all protein, RNA and DNA chains in the entry. The first graphic for a chain summarises the proportions of errors displayed in the second graphic. The second graphic shows the sequence view annotated by issues in geometry and electron density. Residues are color-coded according to the number of geometric quality criteria for which they contain at least one outlier: green = 0, yellow = 1, orange = 2 and red = 3 or more. A red dot above a residue indicates a poor fit to the electron density ($RSRZ > 2$). Stretches of 2 or more consecutive residues without any outlier are shown as a green connector. Residues present in the sample, but not in the model, are shown in grey.

• Molecule 1: URE2 PROTEIN

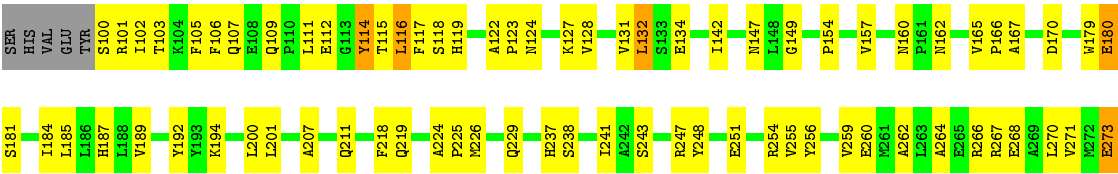


• Molecule 1: URE2 PROTEIN

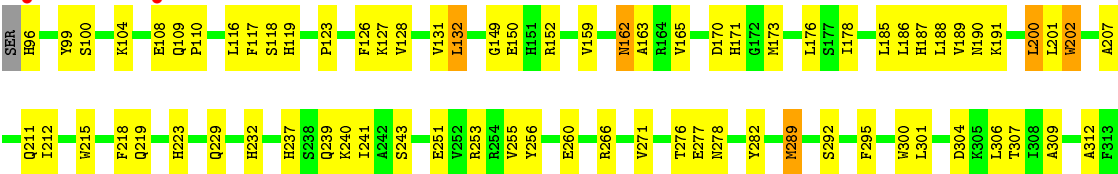


• Molecule 1: URE2 PROTEIN





• Molecule 1: URE2 PROTEIN



4 Data and refinement statistics

Property	Value	Source
Space group	P 21 21 21	Depositor
Cell constants a, b, c, α , β , γ	54.65Å 124.97Å 161.24Å 90.00° 90.00° 90.00°	Depositor
Resolution (Å)	20.00 – 2.90 19.93 – 2.90	Depositor EDS
% Data completeness (in resolution range)	(Not available) (20.00-2.90) 99.5 (19.93-2.90)	Depositor EDS
R_{merge}	(Not available)	Depositor
R_{sym}	0.10	Depositor
$\langle I/\sigma(I) \rangle$ ¹	7.97 (at 2.88Å)	Xtriage
Refinement program	CNS 1.0	Depositor
R, R_{free}	0.209 , 0.276 0.210 , 0.277	Depositor DCC
R_{free} test set	1212 reflections (4.84%)	DCC
Wilson B-factor (Å ²)	24.6	Xtriage
Anisotropy	0.324	Xtriage
Bulk solvent k_{sol} (e/Å ³), B_{sol} (Å ²)	0.35 , 37.8	EDS
Estimated twinning fraction	No twinning to report.	Xtriage
L-test for twinning ²	$\langle L \rangle = 0.49$, $\langle L^2 \rangle = 0.32$	Xtriage
Outliers	0 of 25035 reflections	Xtriage
F_o, F_c correlation	0.91	EDS
Total number of atoms	8097	wwPDB-VP
Average B, all atoms (Å ²)	15.0	wwPDB-VP

Xtriage's analysis on translational NCS is as follows: *The largest off-origin peak in the Patterson function is 13.98% of the height of the origin peak. No significant pseudotranslation is detected.*

¹Intensities estimated from amplitudes.

²Theoretical values of $\langle |L| \rangle$, $\langle L^2 \rangle$ for acentric reflections are 0.5, 0.375 respectively for untwinned datasets, and 0.333, 0.2 for perfectly twinned datasets.

5 Model quality

5.1 Standard geometry

Bond lengths and bond angles in the following residue types are not validated in this section: GSH

The Z score for a bond length (or angle) is the number of standard deviations the observed value is removed from the expected value. A bond length (or angle) with $|Z| > 5$ is considered an outlier worth inspection. RMSZ is the root-mean-square of all Z scores of the bond lengths (or angles).

Mol	Chain	Bond lengths		Bond angles	
		RMSZ	$\# Z > 5$	RMSZ	$\# Z > 5$
1	A	0.43	0/1960	0.63	0/2661
1	B	0.41	0/2037	0.63	0/2765
1	C	0.41	0/2123	0.63	0/2884
1	D	0.42	0/2164	0.61	0/2939
All	All	0.42	0/8284	0.62	0/11249

There are no bond length outliers.

There are no bond angle outliers.

There are no chirality outliers.

There are no planarity outliers.

5.2 Too-close contacts

In the following table, the Non-H and H(model) columns list the number of non-hydrogen atoms and hydrogen atoms in the chain respectively. The H(added) column lists the number of hydrogen atoms added and optimized by MolProbity. The Clashes column lists the number of clashes within the asymmetric unit, whereas Symm-Clashes lists symmetry related clashes.

Mol	Chain	Non-H	H(model)	H(added)	Clashes	Symm-Clashes
1	A	1907	0	1876	101	0
1	B	1981	0	1943	109	0
1	C	2065	0	2018	97	0
1	D	2104	0	2049	93	0
2	A	20	0	15	0	0
2	C	20	0	15	1	0
All	All	8097	0	7916	369	0

The all-atom clashscore is defined as the number of clashes found per 1000 atoms (including hydrogen atoms). The all-atom clashscore for this structure is 23.

All (369) close contacts within the same asymmetric unit are listed below, sorted by their clash magnitude.

Atom-1	Atom-2	Interatomic distance (Å)	Clash overlap (Å)
1:D:314:VAL:HG13	1:D:315:PRO:HD3	1.38	1.02
1:A:314:VAL:HG23	1:A:315:PRO:HD3	1.41	1.01
1:B:111:LEU:HD13	1:B:112:GLU:H	1.33	0.93
1:D:266:ARG:NH2	1:D:304:ASP:H	1.66	0.93
1:C:154:PRO:HA	1:C:157:VAL:HG12	1.50	0.92
1:D:266:ARG:HH22	1:D:304:ASP:H	1.09	0.91
1:C:101:ARG:HG3	1:C:101:ARG:HH11	1.40	0.85
1:A:270:LEU:O	1:A:273:GLU:HG2	1.74	0.85
1:A:198:ASN:HD22	1:A:199:PRO:HD2	1.41	0.85
1:D:127:LYS:HD2	1:D:312:ALA:HA	1.59	0.85
1:B:111:LEU:CD1	1:B:112:GLU:H	1.90	0.85
1:A:273:GLU:HA	1:A:273:GLU:OE2	1.79	0.82
1:A:254:ARG:HH12	1:B:162:ASN:ND2	1.78	0.82
1:A:196:THR:HG22	1:A:198:ASN:H	1.45	0.81
1:A:162:ASN:ND2	1:B:254:ARG:HH22	1.78	0.80
1:C:154:PRO:HA	1:C:157:VAL:CG1	2.12	0.80
1:A:131:VAL:HG21	1:A:185:LEU:HD22	1.62	0.80
1:B:97:VAL:N	1:C:293:ARG:HH22	1.79	0.80
1:A:171:HIS:HA	1:A:175:ASN:HD22	1.47	0.80
1:C:254:ARG:HH12	1:D:162:ASN:ND2	1.80	0.80
1:A:247:ARG:HH21	1:B:229:GLN:HE22	1.27	0.78
1:B:273:GLU:O	1:B:274:LEU:HB2	1.83	0.78
1:D:207:ALA:O	1:D:211:GLN:HG2	1.85	0.76
1:A:109:GLN:HG3	1:A:110:PRO:HD2	1.66	0.76
1:A:334:VAL:O	1:A:338:THR:HG22	1.84	0.76
1:C:179:TRP:O	1:C:180:GLU:HB2	1.86	0.76
1:A:119:HIS:HD2	1:A:121:SER:H	1.32	0.75
1:C:131:VAL:HG21	1:C:185:LEU:HD22	1.69	0.75
1:A:119:HIS:CD2	1:A:121:SER:H	2.04	0.74
1:B:156:PHE:O	1:B:159:VAL:HG12	1.89	0.73
1:C:314:VAL:HB	1:C:315:PRO:HD3	1.70	0.73
1:D:100:SER:O	1:D:104:LYS:HG2	1.89	0.72
1:A:162:ASN:ND2	1:B:254:ARG:NH2	2.37	0.71
1:B:224:ALA:HB3	1:B:225:PRO:HD3	1.72	0.71
1:A:162:ASN:HD21	1:B:254:ARG:HH22	1.38	0.70
1:C:271:VAL:HG11	1:C:289:MET:HG3	1.74	0.69
1:A:100:SER:HB3	1:A:103:THR:OG1	1.93	0.69
1:C:119:HIS:HB3	1:C:122:ALA:HB2	1.74	0.69
1:B:267:ARG:NH1	1:B:297:TYR:O	2.27	0.68
1:D:326:ASN:HD22	1:D:326:ASN:C	1.98	0.67

Continued on next page...

Continued from previous page...

Atom-1	Atom-2	Interatomic distance (Å)	Clash overlap (Å)
1:A:314:VAL:CG2	1:A:315:PRO:HD3	2.22	0.67
1:A:232:HIS:NE2	1:A:237:HIS:HD2	1.92	0.67
1:A:196:THR:HG22	1:A:198:ASN:N	2.09	0.67
1:B:159:VAL:HG22	1:B:177:SER:OG	1.95	0.67
1:B:101:ARG:HA	1:B:104:LYS:HD3	1.75	0.67
1:A:145:ASP:OD2	1:A:148:LEU:HG	1.94	0.67
1:A:247:ARG:HH21	1:B:229:GLN:NE2	1.93	0.67
1:A:347:VAL:O	1:A:351:LEU:HB2	1.94	0.66
1:A:212:ILE:HG23	1:A:309:ALA:HB2	1.78	0.66
1:D:282:TYR:HB3	1:D:289:MET:HE3	1.78	0.66
1:C:267:ARG:HD2	1:C:333:GLU:OE1	1.96	0.66
1:A:224:ALA:HB3	1:A:225:PRO:HD3	1.78	0.65
1:C:119:HIS:HB3	1:C:122:ALA:CB	2.26	0.65
1:C:127:LYS:HD2	1:C:312:ALA:HA	1.79	0.65
1:B:306:LEU:HD21	1:B:311:LEU:HG	1.77	0.65
1:D:256:TYR:OH	1:D:317:ASN:ND2	2.30	0.64
1:B:225:PRO:O	1:B:229:GLN:HG2	1.98	0.64
1:D:282:TYR:HB3	1:D:289:MET:CE	2.28	0.64
1:A:253:ARG:NH1	1:A:330:GLU:OE1	2.30	0.64
1:B:127:LYS:NZ	1:B:219:GLN:HE22	1.95	0.63
1:D:253:ARG:NH1	1:D:325:ILE:HG13	2.13	0.63
1:A:171:HIS:HA	1:A:175:ASN:ND2	2.12	0.63
1:D:289:MET:HB3	1:D:295:PHE:CE1	2.33	0.63
1:A:102:ILE:HG22	1:A:106:PHE:CZ	2.34	0.63
1:D:232:HIS:NE2	1:D:237:HIS:HD2	1.95	0.63
1:C:226:MET:CE	1:C:251:GLU:HG2	2.29	0.62
1:D:289:MET:O	1:D:292:SER:HB3	2.00	0.62
1:B:322:ARG:HG3	1:B:322:ARG:HH11	1.64	0.62
1:A:254:ARG:HH12	1:B:162:ASN:HD21	1.45	0.62
1:B:131:VAL:HG21	1:B:185:LEU:HD22	1.80	0.62
1:B:173:MET:SD	1:B:191:LYS:NZ	2.72	0.62
1:A:229:GLN:HE22	1:B:247:ARG:HH21	1.48	0.62
1:C:248:TYR:OH	1:D:229:GLN:NE2	2.32	0.61
1:B:248:TYR:O	1:B:252:VAL:HG23	2.00	0.61
1:D:316:TRP:HA	1:D:319:VAL:HG22	1.81	0.61
1:B:223:HIS:HE1	1:B:316:TRP:HB2	1.66	0.60
1:D:339:LYS:HA	1:D:339:LYS:NZ	2.16	0.60
1:B:314:VAL:HG22	1:B:315:PRO:HD3	1.82	0.60
1:B:184:ILE:O	1:B:188:LEU:HG	2.01	0.60
1:B:326:ASN:O	1:B:330:GLU:HG3	2.02	0.60
1:D:266:ARG:HH22	1:D:304:ASP:N	1.92	0.60

Continued on next page...

Continued from previous page...

Atom-1	Atom-2	Interatomic distance (Å)	Clash overlap (Å)
1:A:232:HIS:NE2	1:A:237:HIS:CD2	2.70	0.59
1:C:103:THR:O	1:C:107:GLN:HG2	2.01	0.59
1:A:320:VAL:O	1:A:323:ILE:HG12	2.01	0.59
1:B:97:VAL:HA	1:B:148:LEU:O	2.03	0.59
1:B:344:ARG:HB2	1:B:347:VAL:HG23	1.84	0.59
1:A:298:PRO:HB3	1:A:340:HIS:CE1	2.37	0.59
1:B:226:MET:HG3	1:B:251:GLU:HG2	1.83	0.59
1:B:108:GLU:HG3	1:B:108:GLU:O	2.03	0.59
1:C:181:SER:O	1:C:185:LEU:HG	2.02	0.59
1:B:314:VAL:CG2	1:B:315:PRO:HD3	2.33	0.58
1:B:226:MET:HG3	1:B:251:GLU:CG	2.33	0.58
1:C:273:GLU:O	1:C:275:ASP:N	2.36	0.58
1:C:128:VAL:HG12	1:C:132:LEU:HD22	1.86	0.58
1:D:260:GLU:OE1	1:D:331:PHE:HB3	2.03	0.58
1:C:266:ARG:HB2	1:C:299:VAL:CG1	2.34	0.58
1:A:189:VAL:HB	1:A:202:TRP:HB2	1.86	0.58
1:B:319:VAL:HA	1:B:322:ARG:NH1	2.19	0.58
1:B:339:LYS:O	1:B:343:ARG:HG3	2.03	0.58
1:C:185:LEU:O	1:C:189:VAL:HG22	2.03	0.57
1:B:124:ASN:ND2	1:B:316:TRP:HZ2	2.02	0.57
1:B:108:GLU:CG	1:B:108:GLU:O	2.51	0.57
1:B:127:LYS:HZ3	1:B:219:GLN:HE22	1.51	0.57
1:C:101:ARG:HG3	1:C:101:ARG:NH1	2.13	0.57
1:D:260:GLU:OE1	1:D:334:VAL:HG23	2.05	0.57
1:D:170:ASP:OD2	1:D:187:HIS:HE1	1.87	0.57
1:C:147:ASN:C	1:C:149:GLY:H	2.07	0.56
1:A:207:ALA:O	1:A:211:GLN:HG2	2.05	0.56
1:A:128:VAL:O	1:A:132:LEU:HB2	2.05	0.56
1:A:314:VAL:HG13	1:A:341:MET:CE	2.35	0.56
1:D:223:HIS:NE2	1:D:256:TYR:CE1	2.69	0.56
1:D:189:VAL:HB	1:D:202:TRP:HB2	1.88	0.56
1:A:109:GLN:HG2	1:A:175:ASN:OD1	2.06	0.56
1:A:348:ILE:C	1:A:350:ALA:H	2.08	0.56
1:C:123:PRO:HB2	1:C:316:TRP:CE2	2.41	0.56
1:C:311:LEU:HA	1:C:314:VAL:HG23	1.88	0.55
1:A:109:GLN:HG3	1:A:110:PRO:CD	2.34	0.55
1:C:107:GLN:HA	1:C:107:GLN:NE2	2.21	0.55
1:D:323:ILE:HG13	1:D:325:ILE:HD13	1.88	0.55
1:D:118:SER:OG	1:D:119:HIS:N	2.39	0.55
1:D:271:VAL:HG22	1:D:292:SER:OG	2.07	0.55
1:A:107:GLN:O	1:A:108:GLU:HB2	2.07	0.55

Continued on next page...

Continued from previous page...

Atom-1	Atom-2	Interatomic distance (Å)	Clash overlap (Å)
1:C:226:MET:HE2	1:C:251:GLU:HG2	1.88	0.54
1:A:178:ILE:N	1:A:178:ILE:HD12	2.23	0.54
1:C:102:ILE:O	1:C:106:PHE:HD1	1.91	0.54
1:A:105:PHE:CZ	1:A:142:ILE:HD11	2.42	0.54
1:A:346:ALA:HA	1:A:349:LYS:HB3	1.89	0.54
1:A:119:HIS:HD2	1:A:121:SER:N	2.03	0.54
1:D:128:VAL:HG12	1:D:132:LEU:HD22	1.90	0.54
1:A:160:ASN:HD22	1:A:160:ASN:C	2.10	0.54
1:D:218:PHE:CZ	1:D:255:VAL:HG13	2.43	0.54
1:C:277:GLU:O	1:C:278:ASN:HB2	2.07	0.54
1:D:127:LYS:CD	1:D:312:ALA:HA	2.36	0.54
1:C:192:TYR:CE2	1:C:200:LEU:HD12	2.43	0.54
1:C:102:ILE:N	1:C:102:ILE:HD12	2.23	0.53
1:B:111:LEU:HD13	1:B:112:GLU:HG2	1.90	0.53
1:C:254:ARG:HH12	1:D:162:ASN:HD21	1.55	0.53
1:C:243:SER:OG	1:D:237:HIS:HE1	1.92	0.53
1:A:198:ASN:HD22	1:A:199:PRO:CD	2.18	0.53
1:C:247:ARG:CZ	1:D:232:HIS:CD2	2.92	0.53
1:B:234:ARG:O	1:B:234:ARG:HD2	2.08	0.53
1:B:322:ARG:HG3	1:B:322:ARG:NH1	2.24	0.53
1:B:297:TYR:CD2	1:B:298:PRO:HD2	2.44	0.53
1:B:192:TYR:CZ	1:B:196:THR:HG21	2.44	0.53
1:C:247:ARG:HG3	1:C:247:ARG:HH11	1.74	0.52
1:B:271:VAL:C	1:B:273:GLU:H	2.13	0.52
1:C:326:ASN:HD22	1:C:326:ASN:C	2.11	0.52
1:B:186:LEU:O	1:B:190:ASN:ND2	2.42	0.52
1:C:334:VAL:O	1:C:337:TRP:HB3	2.10	0.52
1:A:237:HIS:HE1	1:B:243:SER:OG	1.91	0.52
1:C:123:PRO:HB2	1:C:316:TRP:CZ2	2.44	0.52
1:B:130:ILE:HD11	1:B:351:LEU:HD21	1.91	0.52
1:D:354:GLU:CD	1:D:354:GLU:N	2.63	0.52
1:B:157:VAL:O	1:B:157:VAL:HG12	2.09	0.52
1:A:271:VAL:C	1:A:273:GLU:H	2.13	0.52
1:C:311:LEU:HD23	1:C:341:MET:SD	2.50	0.52
1:D:110:PRO:HD2	1:D:171:HIS:CE1	2.45	0.52
1:A:127:LYS:HG3	1:A:315:PRO:HG2	1.93	0.51
1:B:212:ILE:HG13	1:B:302:VAL:HG21	1.91	0.51
1:D:339:LYS:HA	1:D:339:LYS:HZ3	1.74	0.51
1:D:126:PHE:HB3	1:D:351:LEU:CD1	2.39	0.51
1:D:201:LEU:HA	1:D:307:THR:HA	1.92	0.51
1:D:178:ILE:N	1:D:178:ILE:HD12	2.26	0.51

Continued on next page...

Continued from previous page...

Atom-1	Atom-2	Interatomic distance (Å)	Clash overlap (Å)
1:B:338:THR:O	1:B:342:MET:HG2	2.10	0.51
1:A:160:ASN:HD21	1:A:162:ASN:HB3	1.75	0.51
1:D:116:LEU:HD23	1:D:117:PHE:N	2.26	0.51
1:A:256:TYR:HA	1:A:259:VAL:HG22	1.93	0.51
1:B:186:LEU:HD21	1:B:213:ASN:HD21	1.76	0.51
1:C:259:VAL:HG23	1:C:260:GLU:N	2.25	0.51
1:B:132:LEU:HD23	1:B:139:TYR:CG	2.46	0.50
1:D:239:GLN:HG2	1:D:240:LYS:N	2.26	0.50
1:C:226:MET:HE3	1:C:251:GLU:HG2	1.93	0.50
1:A:316:TRP:O	1:A:319:VAL:HG12	2.12	0.50
1:B:223:HIS:HE1	1:B:316:TRP:CB	2.24	0.50
1:D:126:PHE:CD2	1:D:351:LEU:HA	2.47	0.50
1:B:306:LEU:HD23	1:B:307:THR:N	2.27	0.50
1:B:170:ASP:OD2	1:B:187:HIS:HE1	1.94	0.50
1:D:314:VAL:CG1	1:D:315:PRO:HD3	2.26	0.49
1:D:126:PHE:HB3	1:D:351:LEU:HD11	1.94	0.49
1:B:97:VAL:N	1:C:293:ARG:NH2	2.54	0.49
1:B:251:GLU:HA	1:B:251:GLU:OE2	2.12	0.49
1:D:339:LYS:CE	1:D:339:LYS:HA	2.43	0.49
1:C:218:PHE:CZ	1:C:255:VAL:HG13	2.48	0.49
1:C:268:GLU:HG3	1:C:289:MET:SD	2.52	0.49
1:D:232:HIS:NE2	1:D:237:HIS:CD2	2.80	0.49
1:C:266:ARG:HB2	1:C:299:VAL:HG11	1.94	0.49
1:A:314:VAL:HG13	1:A:341:MET:HE3	1.95	0.49
1:B:213:ASN:O	1:B:214:ALA:C	2.51	0.49
1:C:292:SER:C	1:C:294:PHE:H	2.16	0.49
1:A:160:ASN:ND2	1:A:162:ASN:H	2.11	0.48
1:D:326:ASN:C	1:D:326:ASN:ND2	2.65	0.48
1:B:114:TYR:HB3	1:B:168:LEU:HD11	1.95	0.48
1:B:219:GLN:O	1:B:223:HIS:HB3	2.13	0.48
1:C:290:SER:HA	1:C:295:PHE:CD2	2.47	0.48
1:C:224:ALA:HB3	1:C:225:PRO:HD3	1.95	0.48
1:C:154:PRO:CA	1:C:157:VAL:HG12	2.33	0.48
1:C:147:ASN:C	1:C:149:GLY:N	2.66	0.48
1:A:262:ALA:HB1	1:A:266:ARG:NH2	2.28	0.48
1:A:254:ARG:HH22	1:B:162:ASN:HD21	1.60	0.48
1:D:253:ARG:HH11	1:D:253:ARG:HG2	1.78	0.48
1:D:185:LEU:O	1:D:189:VAL:HG22	2.13	0.48
1:B:192:TYR:O	1:B:196:THR:HG23	2.13	0.48
1:B:293:ARG:CG	1:B:293:ARG:HH11	2.27	0.48
1:A:127:LYS:HZ1	1:A:220:THR:HG22	1.78	0.48

Continued on next page...

Continued from previous page...

Atom-1	Atom-2	Interatomic distance (Å)	Clash overlap (Å)
1:B:108:GLU:OE1	1:B:108:GLU:O	2.30	0.48
1:D:352:ARG:HB2	1:D:354:GLU:OE1	2.14	0.48
1:A:205:ASP:O	1:A:209:GLN:HG3	2.14	0.48
1:C:256:TYR:OH	1:C:317:ASN:ND2	2.47	0.48
1:D:186:LEU:O	1:D:190:ASN:HB2	2.13	0.48
1:B:326:ASN:OD1	1:B:329:ILE:HD12	2.13	0.48
1:A:130:ILE:HG12	1:A:347:VAL:HA	1.95	0.47
1:B:192:TYR:CZ	1:B:200:LEU:HD12	2.49	0.47
1:A:162:ASN:HD21	1:B:254:ARG:NH2	2.04	0.47
1:C:207:ALA:O	1:C:211:GLN:HG2	2.13	0.47
1:C:266:ARG:CB	1:C:299:VAL:HG13	2.44	0.47
1:A:348:ILE:O	1:A:350:ALA:N	2.48	0.47
1:A:215:TRP:CZ3	1:A:259:VAL:HG12	2.50	0.47
1:C:117:PHE:HB2	1:C:167:ALA:HB3	1.97	0.47
1:C:118:SER:OG	1:C:119:HIS:N	2.47	0.47
1:D:253:ARG:NH1	1:D:330:GLU:OE1	2.48	0.47
1:B:251:GLU:O	1:B:255:VAL:HG13	2.14	0.47
1:C:273:GLU:O	1:C:274:LEU:C	2.52	0.47
1:C:270:LEU:HG	1:C:274:LEU:HD12	1.96	0.47
1:C:211:GLN:NE2	1:D:176:LEU:HD11	2.30	0.47
1:A:266:ARG:HB3	1:A:299:VAL:HG13	1.96	0.47
1:C:170:ASP:OD2	1:C:187:HIS:HE1	1.98	0.47
1:A:200:LEU:O	1:A:201:LEU:HB2	2.15	0.47
1:B:144:LEU:HD22	1:B:150:GLU:HB3	1.96	0.47
1:A:110:PRO:HD2	1:A:171:HIS:CE1	2.50	0.47
1:C:124:ASN:HB3	1:C:166:PRO:HD3	1.97	0.47
1:D:251:GLU:HA	1:D:251:GLU:OE2	2.14	0.47
1:B:267:ARG:O	1:B:271:VAL:HG23	2.15	0.47
1:D:271:VAL:HG11	1:D:289:MET:HE2	1.97	0.47
1:D:131:VAL:HG21	1:D:185:LEU:HD22	1.96	0.47
1:A:349:LYS:O	1:A:349:LYS:HD3	2.15	0.47
1:A:254:ARG:NH1	1:B:162:ASN:HD21	2.10	0.46
1:B:260:GLU:OE2	1:B:334:VAL:HG23	2.15	0.46
1:A:170:ASP:OD2	1:A:187:HIS:HE1	1.97	0.46
1:A:251:GLU:HA	1:A:251:GLU:OE2	2.15	0.46
1:D:348:ILE:O	1:D:352:ARG:HG3	2.16	0.46
1:A:319:VAL:CG2	1:A:322:ARG:HE	2.29	0.46
1:D:276:THR:C	1:D:278:ASN:H	2.19	0.46
1:A:160:ASN:C	1:A:160:ASN:ND2	2.68	0.46
1:C:264:ALA:O	1:C:267:ARG:HB3	2.15	0.46
1:B:329:ILE:HD11	1:C:112:GLU:CB	2.46	0.46

Continued on next page...

Continued from previous page...

Atom-1	Atom-2	Interatomic distance (Å)	Clash overlap (Å)
1:C:260:GLU:OE1	1:C:331:PHE:HB3	2.16	0.46
1:B:273:GLU:O	1:B:273:GLU:CD	2.54	0.46
1:D:326:ASN:ND2	1:D:329:ILE:H	2.14	0.46
1:D:352:ARG:HG2	1:D:352:ARG:HH11	1.81	0.46
1:A:102:ILE:HB	1:A:155:GLU:HG3	1.98	0.46
1:B:178:ILE:N	1:B:178:ILE:HD12	2.31	0.46
1:C:340:HIS:CE1	1:C:343:ARG:HH12	2.33	0.46
1:B:293:ARG:HG3	1:B:293:ARG:HH11	1.81	0.46
1:C:134:GLU:OE2	1:C:344:ARG:NH2	2.49	0.46
1:C:237:HIS:HE1	1:D:243:SER:OG	1.98	0.46
1:A:215:TRP:CE2	1:A:301:LEU:HD22	2.51	0.46
1:C:314:VAL:HB	1:C:315:PRO:CD	2.44	0.45
1:A:253:ARG:NH1	1:A:330:GLU:CD	2.70	0.45
1:C:107:GLN:HE21	1:C:107:GLN:HA	1.81	0.45
1:A:256:TYR:OH	1:A:317:ASN:ND2	2.49	0.45
1:C:194:LYS:HG2	1:C:194:LYS:O	2.16	0.45
1:D:326:ASN:HD21	1:D:328:LYS:HB3	1.82	0.45
1:C:201:LEU:HA	1:C:306:LEU:O	2.16	0.45
1:B:316:TRP:O	1:B:318:ASN:N	2.49	0.45
1:C:298:PRO:HG3	1:C:340:HIS:CE1	2.51	0.45
1:D:200:LEU:O	1:D:201:LEU:HB2	2.16	0.45
1:C:262:ALA:O	1:C:266:ARG:HG2	2.16	0.45
1:A:187:HIS:CD2	1:B:210:SER:OG	2.69	0.45
1:B:159:VAL:CG1	1:B:160:ASN:N	2.79	0.45
1:C:105:PHE:CZ	1:C:115:THR:HG21	2.52	0.45
1:B:269:ALA:O	1:B:273:GLU:HB2	2.17	0.45
1:A:348:ILE:C	1:A:350:ALA:N	2.70	0.45
1:B:234:ARG:NH1	1:C:349:LYS:HG3	2.32	0.45
1:C:100:SER:O	1:C:103:THR:N	2.50	0.45
1:A:262:ALA:O	1:A:266:ARG:HD3	2.17	0.45
1:B:316:TRP:C	1:B:318:ASN:H	2.20	0.44
1:A:229:GLN:NE2	1:B:247:ARG:HH21	2.14	0.44
1:B:234:ARG:HH12	1:C:349:LYS:HG3	1.82	0.44
1:C:180:GLU:O	1:C:184:ILE:HG13	2.18	0.44
1:B:201:LEU:HA	1:B:307:THR:HA	1.97	0.44
1:B:326:ASN:C	1:B:326:ASN:HD22	2.21	0.44
1:C:101:ARG:HG2	1:C:102:ILE:HD12	1.98	0.44
1:D:132:LEU:HD13	1:D:188:LEU:CD1	2.48	0.44
1:A:186:LEU:HD21	1:A:213:ASN:ND2	2.32	0.44
1:A:212:ILE:HG13	1:A:302:VAL:HG11	1.99	0.44
1:C:114:TYR:CD1	1:C:114:TYR:N	2.86	0.44

Continued on next page...

Continued from previous page...

Atom-1	Atom-2	Interatomic distance (Å)	Clash overlap (Å)
1:A:163:ALA:O	1:A:164:ARG:NH1	2.46	0.44
1:C:106:PHE:HA	1:C:109:GLN:HG3	2.00	0.44
1:A:119:HIS:CD2	1:A:121:SER:N	2.78	0.44
1:C:266:ARG:HB2	1:C:299:VAL:HG13	1.98	0.44
1:D:123:PRO:HB2	1:D:316:TRP:CE2	2.53	0.44
1:C:254:ARG:HH12	1:D:162:ASN:HD22	1.64	0.44
1:D:240:LYS:C	1:D:241:ILE:HG13	2.39	0.44
1:B:127:LYS:HE2	1:B:181:SER:HB2	2.00	0.43
1:A:314:VAL:HG23	1:A:315:PRO:CD	2.29	0.43
1:D:260:GLU:OE2	1:D:333:GLU:HB2	2.18	0.43
1:B:121:SER:O	1:B:123:PRO:HD3	2.17	0.43
1:A:273:GLU:OE2	1:A:273:GLU:CA	2.56	0.43
1:A:202:TRP:CG	1:A:203:SER:N	2.84	0.43
1:B:99:TYR:HB3	1:B:150:GLU:HA	1.99	0.43
1:A:192:TYR:O	1:A:196:THR:HB	2.17	0.43
1:C:229:GLN:HB2	1:C:248:TYR:CD2	2.54	0.43
1:D:202:TRP:HE3	1:D:202:TRP:HA	1.84	0.43
1:A:241:ILE:HG21	1:B:241:ILE:HD13	2.01	0.43
1:A:208:ASP:O	1:A:212:ILE:HG13	2.19	0.43
1:D:118:SER:HA	1:D:165:VAL:HB	2.00	0.43
1:D:99:TYR:HB3	1:D:150:GLU:HA	2.00	0.43
1:D:173:MET:HG3	1:D:191:LYS:NZ	2.33	0.43
1:B:155:GLU:CD	1:B:155:GLU:H	2.21	0.43
1:A:132:LEU:HD13	1:A:188:LEU:CD1	2.48	0.43
1:C:105:PHE:CD1	1:C:142:ILE:HD11	2.54	0.43
1:D:162:ASN:O	1:D:163:ALA:HB3	2.19	0.43
1:D:202:TRP:HA	1:D:202:TRP:CE3	2.54	0.43
1:D:237:HIS:C	1:D:239:GLN:H	2.22	0.42
1:B:159:VAL:HG13	1:B:160:ASN:N	2.33	0.42
1:D:253:ARG:NH1	1:D:330:GLU:OE2	2.52	0.42
1:C:229:GLN:HB2	1:C:248:TYR:CG	2.55	0.42
1:D:352:ARG:HG2	1:D:352:ARG:NH1	2.34	0.42
1:B:262:ALA:O	1:B:266:ARG:HG2	2.19	0.42
1:D:212:ILE:HG23	1:D:309:ALA:HB2	2.01	0.42
1:A:314:VAL:HG11	1:A:341:MET:CB	2.49	0.42
1:B:252:VAL:O	1:B:256:TYR:HD1	2.03	0.42
1:B:202:TRP:HA	1:B:202:TRP:CE3	2.54	0.42
1:C:192:TYR:CZ	1:C:200:LEU:HD12	2.53	0.42
1:B:127:LYS:HG3	1:B:312:ALA:HA	2.00	0.42
1:B:202:TRP:HE3	1:B:202:TRP:HA	1.84	0.42
1:A:223:HIS:O	1:A:227:ILE:HG13	2.20	0.42

Continued on next page...

Continued from previous page...

Atom-1	Atom-2	Interatomic distance (Å)	Clash overlap (Å)
1:B:274:LEU:HD12	1:B:274:LEU:HA	1.90	0.42
1:B:189:VAL:HB	1:B:202:TRP:HB2	2.01	0.42
1:C:247:ARG:HH21	1:D:229:GLN:HE22	1.66	0.42
1:D:170:ASP:HB3	1:D:176:LEU:HB3	2.01	0.42
1:C:160:ASN:HB2	1:C:179:TRP:HB3	2.01	0.42
1:B:267:ARG:NH2	1:B:333:GLU:OE1	2.53	0.41
1:A:351:LEU:C	1:A:353:GLY:H	2.23	0.41
1:D:223:HIS:HD2	1:D:255:VAL:CG1	2.33	0.41
1:C:256:TYR:HA	1:C:259:VAL:HG22	2.02	0.41
1:B:293:ARG:CG	1:B:293:ARG:NH1	2.83	0.41
1:D:340:HIS:HA	1:D:343:ARG:NH1	2.35	0.41
1:D:215:TRP:CD2	1:D:301:LEU:HD13	2.55	0.41
1:C:310:ASP:HA	1:C:337:TRP:HZ2	1.85	0.41
1:A:255:VAL:O	1:A:258:VAL:HB	2.20	0.41
1:D:219:GLN:O	1:D:223:HIS:HB3	2.21	0.41
1:D:149:GLY:O	1:D:152:ARG:HB2	2.20	0.41
1:C:339:LYS:HA	1:C:339:LYS:HD3	1.59	0.41
1:A:270:LEU:HD21	1:A:297:TYR:HB2	2.02	0.41
1:A:271:VAL:C	1:A:273:GLU:N	2.74	0.41
1:B:339:LYS:HD3	1:B:339:LYS:HA	1.77	0.41
1:B:115:THR:O	1:B:168:LEU:HD12	2.21	0.41
1:D:300:TRP:CZ3	1:D:306:LEU:HD13	2.55	0.41
1:C:241:ILE:CD1	1:D:241:ILE:HG21	2.50	0.41
1:C:165:VAL:HG23	2:C:356:GSH:HB23	2.02	0.41
1:D:344:ARG:HB2	1:D:347:VAL:HG23	2.03	0.41
1:A:270:LEU:O	1:A:272:MET:N	2.54	0.41
1:B:270:LEU:O	1:B:273:GLU:HB3	2.20	0.41
1:B:316:TRP:C	1:B:318:ASN:N	2.75	0.41
1:A:260:GLU:OE2	1:A:333:GLU:HB2	2.20	0.41
1:A:101:ARG:HG2	1:A:101:ARG:O	2.21	0.41
1:C:162:ASN:ND2	1:D:218:PHE:CE1	2.89	0.41
1:C:338:THR:O	1:C:342:MET:HG2	2.21	0.40
1:C:116:LEU:C	1:C:116:LEU:CD2	2.89	0.40
1:B:98:GLU:O	1:B:98:GLU:HG3	2.21	0.40
1:D:109:GLN:HE21	1:D:171:HIS:CE1	2.39	0.40
1:B:260:GLU:OE2	1:B:331:PHE:HB3	2.21	0.40
1:D:173:MET:CG	1:D:191:LYS:HZ2	2.34	0.40
1:C:332:PRO:O	1:C:335:TYR:HB3	2.21	0.40
1:D:132:LEU:HD13	1:D:188:LEU:HD13	2.03	0.40
1:B:153:ALA:HB1	1:B:155:GLU:OE2	2.22	0.40
1:A:118:SER:O	1:A:143:PHE:HA	2.21	0.40

Continued on next page...

Continued from previous page...

Atom-1	Atom-2	Interatomic distance (Å)	Clash overlap (Å)
1:D:316:TRP:O	1:D:320:VAL:HG13	2.21	0.40

There are no symmetry-related clashes.

5.3 Torsion angles [i](#)

5.3.1 Protein backbone [i](#)

In the following table, the Percentiles column shows the percent Ramachandran outliers of the chain as a percentile score with respect to all X-ray entries followed by that with respect to entries of similar resolution.

The Analysed column shows the number of residues for which the backbone conformation was analysed, and the total number of residues.

Mol	Chain	Analysed	Favoured	Allowed	Outliers	Percentiles	
1	A	230/260 (88%)	205 (89%)	19 (8%)	6 (3%)	7	26
1	B	238/260 (92%)	210 (88%)	23 (10%)	5 (2%)	9	32
1	C	253/260 (97%)	224 (88%)	25 (10%)	4 (2%)	12	40
1	D	257/260 (99%)	233 (91%)	21 (8%)	3 (1%)	16	48
All	All	978/1040 (94%)	872 (89%)	88 (9%)	18 (2%)	11	37

All (18) Ramachandran outliers are listed below:

Mol	Chain	Res	Type
1	A	108	GLU
1	B	274	LEU
1	B	275	ASP
1	C	274	LEU
1	C	278	ASN
1	A	103	THR
1	A	238	SER
1	A	349	LYS
1	C	273	GLU
1	D	108	GLU
1	B	317	ASN
1	B	293	ARG
1	D	277	GLU
1	C	180	GLU

Continued on next page...

Continued from previous page...

Mol	Chain	Res	Type
1	A	271	VAL
1	B	271	VAL
1	A	332	PRO
1	D	353	GLY

5.3.2 Protein sidechains ⓘ

In the following table, the Percentiles column shows the percent sidechain outliers of the chain as a percentile score with respect to all X-ray entries followed by that with respect to entries of similar resolution.

The Analysed column shows the number of residues for which the sidechain conformation was analysed, and the total number of residues.

Mol	Chain	Analysed	Rotameric	Outliers	Percentiles	
1	A	202/223 (91%)	196 (97%)	6 (3%)	48	83
1	B	210/223 (94%)	197 (94%)	13 (6%)	23	55
1	C	218/223 (98%)	207 (95%)	11 (5%)	30	65
1	D	222/223 (100%)	211 (95%)	11 (5%)	30	65
All	All	852/892 (96%)	811 (95%)	41 (5%)	31	67

All (41) residues with a non-rotameric sidechain are listed below:

Mol	Chain	Res	Type
1	A	157	VAL
1	A	160	ASN
1	A	179	TRP
1	A	190	ASN
1	A	200	LEU
1	A	314	VAL
1	B	108	GLU
1	B	111	LEU
1	B	148	LEU
1	B	179	TRP
1	B	194	LYS
1	B	202	TRP
1	B	273	GLU
1	B	275	ASP
1	B	293	ARG
1	B	295	PHE
1	B	297	TYR

Continued on next page...

Continued from previous page...

Mol	Chain	Res	Type
1	B	321	ASP
1	B	326	ASN
1	C	111	LEU
1	C	114	TYR
1	C	116	LEU
1	C	132	LEU
1	C	219	GLN
1	C	238	SER
1	C	278	ASN
1	C	319	VAL
1	C	326	ASN
1	C	351	LEU
1	C	352	ARG
1	D	96	HIS
1	D	132	LEU
1	D	159	VAL
1	D	162	ASN
1	D	200	LEU
1	D	202	TRP
1	D	289	MET
1	D	314	VAL
1	D	326	ASN
1	D	339	LYS
1	D	354	GLU

Some sidechains can be flipped to improve hydrogen bonding and reduce clashes. All (53) such sidechains are listed below:

Mol	Chain	Res	Type
1	A	119	HIS
1	A	147	ASN
1	A	160	ASN
1	A	162	ASN
1	A	175	ASN
1	A	187	HIS
1	A	198	ASN
1	A	209	GLN
1	A	211	GLN
1	A	213	ASN
1	A	219	GLN
1	A	229	GLN
1	A	237	HIS
1	A	317	ASN

Continued on next page...

Continued from previous page...

Mol	Chain	Res	Type
1	B	109	GLN
1	B	124	ASN
1	B	151	HIS
1	B	162	ASN
1	B	187	HIS
1	B	209	GLN
1	B	213	ASN
1	B	219	GLN
1	B	229	GLN
1	B	237	HIS
1	B	239	GLN
1	B	318	ASN
1	C	107	GLN
1	C	109	GLN
1	C	162	ASN
1	C	187	HIS
1	C	198	ASN
1	C	209	GLN
1	C	211	GLN
1	C	213	ASN
1	C	219	GLN
1	C	229	GLN
1	C	237	HIS
1	C	239	GLN
1	C	291	GLN
1	C	317	ASN
1	C	326	ASN
1	D	96	HIS
1	D	109	GLN
1	D	147	ASN
1	D	162	ASN
1	D	187	HIS
1	D	209	GLN
1	D	213	ASN
1	D	219	GLN
1	D	229	GLN
1	D	237	HIS
1	D	317	ASN
1	D	326	ASN

5.3.3 RNA ⓘ

There are no RNA molecules in this entry.

5.4 Non-standard residues in protein, DNA, RNA chains ⓘ

There are no non-standard protein/DNA/RNA residues in this entry.

5.5 Carbohydrates ⓘ

There are no carbohydrates in this entry.

5.6 Ligand geometry ⓘ

2 ligands are modelled in this entry.

In the following table, the Counts columns list the number of bonds (or angles) for which Mogul statistics could be retrieved, the number of bonds (or angles) that are observed in the model and the number of bonds (or angles) that are defined in the chemical component dictionary. The Link column lists molecule types, if any, to which the group is linked. The Z score for a bond length (or angle) is the number of standard deviations the observed value is removed from the expected value. A bond length (or angle) with $|Z| > 2$ is considered an outlier worth inspection. RMSZ is the root-mean-square of all Z scores of the bond lengths (or angles).

Mol	Type	Chain	Res	Link	Bond lengths			Bond angles		
					Counts	RMSZ	# $ Z > 2$	Counts	RMSZ	# $ Z > 2$
2	GSH	A	355	-	13,19,19	1.03	0	15,24,24	0.91	0
2	GSH	C	356	-	13,19,19	1.41	2 (15%)	15,24,24	0.80	0

In the following table, the Chirals column lists the number of chiral outliers, the number of chiral centers analysed, the number of these observed in the model and the number defined in the chemical component dictionary. Similar counts are reported in the Torsion and Rings columns. '-' means no outliers of that kind were identified.

Mol	Type	Chain	Res	Link	Chirals	Torsions	Rings
2	GSH	A	355	-	-	0/18/24/24	0/0/0/0
2	GSH	C	356	-	-	0/18/24/24	0/0/0/0

All (2) bond length outliers are listed below:

Mol	Chain	Res	Type	Atoms	Z	Observed(Å)	Ideal(Å)
2	C	356	GSH	CG1-CD1	2.16	1.55	1.51
2	C	356	GSH	CB2-CA2	2.79	1.56	1.53

There are no bond angle outliers.

There are no chirality outliers.

There are no torsion outliers.

There are no ring outliers.

1 monomer is involved in 1 short contact:

Mol	Chain	Res	Type	Clashes	Symm-Clashes
2	C	356	GSH	1	0

5.7 Other polymers [i](#)

There are no such residues in this entry.

5.8 Polymer linkage issues [i](#)

There are no chain breaks in this entry.

6 Fit of model and data ⓘ

6.1 Protein, DNA and RNA chains ⓘ

In the following table, the column labelled ‘#RSRZ> 2’ contains the number (and percentage) of RSRZ outliers, followed by percent RSRZ outliers for the chain as percentile scores relative to all X-ray entries and entries of similar resolution. The OWAB column contains the minimum, median, 95th percentile and maximum values of the occupancy-weighted average B-factor per residue. The column labelled ‘Q< 0.9’ lists the number of (and percentage) of residues with an average occupancy less than 0.9.

Mol	Chain	Analysed	<RSRZ>	#RSRZ>2	OWAB(Å ²)	Q<0.9
1	A	234/260 (90%)	-0.26	12 (5%) 32 25	2, 12, 43, 64	0
1	B	242/260 (93%)	-0.16	12 (4%) 32 26	2, 15, 42, 53	0
1	C	255/260 (98%)	-0.43	1 (0%) 93 92	2, 10, 33, 41	0
1	D	259/260 (99%)	-0.39	3 (1%) 81 78	1, 11, 31, 50	0
All	All	990/1040 (95%)	-0.31	28 (2%) 56 50	1, 12, 36, 64	0

All (28) RSRZ outliers are listed below:

Mol	Chain	Res	Type	RSRZ
1	A	107	GLN	4.8
1	D	353	GLY	4.1
1	B	97	VAL	3.8
1	B	292	SER	3.8
1	A	108	GLU	3.4
1	A	106	PHE	3.3
1	B	293	ARG	3.2
1	B	295	PHE	3.1
1	A	103	THR	3.1
1	D	96	HIS	3.0
1	B	274	LEU	3.0
1	A	274	LEU	3.0
1	B	111	LEU	2.9
1	C	293	ARG	2.7
1	A	275	ASP	2.7
1	B	107	GLN	2.7
1	B	276	THR	2.6
1	D	108	GLU	2.6
1	A	100	SER	2.5
1	A	109	GLN	2.4
1	A	353	GLY	2.4

Continued on next page...

Continued from previous page...

Mol	Chain	Res	Type	RSRZ
1	B	275	ASP	2.2
1	B	112	GLU	2.2
1	A	102	ILE	2.2
1	B	104	LYS	2.1
1	A	104	LYS	2.1
1	B	353	GLY	2.0
1	A	352	ARG	2.0

6.2 Non-standard residues in protein, DNA, RNA chains [i](#)

There are no non-standard protein/DNA/RNA residues in this entry.

6.3 Carbohydrates [i](#)

There are no carbohydrates in this entry.

6.4 Ligands [i](#)

In the following table, the Atoms column lists the number of modelled atoms in the group and the number defined in the chemical component dictionary. LLDF column lists the quality of electron density of the group with respect to its neighbouring residues in protein, DNA or RNA chains. The B-factors column lists the minimum, median, 95th percentile and maximum values of B factors of atoms in the group. The column labelled 'Q< 0.9' lists the number of atoms with occupancy less than 0.9.

Mol	Type	Chain	Res	Atoms	RSCC	RSR	LLDF	B-factors(\AA^2)	Q<0.9
2	GSH	A	355	20/20	0.94	0.16	0.90	16,22,26,30	0
2	GSH	C	356	20/20	0.94	0.17	0.72	11,15,23,24	0

6.5 Other polymers [i](#)

There are no such residues in this entry.