



# Full wwPDB X-ray Structure Validation Report ⓘ

Jan 31, 2016 – 08:23 PM GMT

PDB ID : 1K21  
Title : HUMAN THROMBIN-INHIBITOR COMPLEX  
Authors : Stubbs, M.T.; Musil, D.  
Deposited on : 2001-09-26  
Resolution : 1.86 Å(reported)

This is a Full wwPDB X-ray Structure Validation Report for a publicly released PDB entry.  
We welcome your comments at [validation@mail.wwpdb.org](mailto:validation@mail.wwpdb.org)  
A user guide is available at  
<http://wwpdb.org/validation/2016/XrayValidationReportHelp>  
with specific help available everywhere you see the ⓘ symbol.

---

The following versions of software and data (see [references ⓘ](#)) were used in the production of this report:

MolProbity : 4.02b-467  
Mogul : 1.7 (RC4), CSD as536be (2015)  
Xtriage (Phenix) : 1.9-1692  
EDS : rb-20026688  
Percentile statistics : 20151230.v01 (using entries in the PDB archive December 30th 2015)  
Refmac : 5.8.0135  
CCP4 : 6.5.0  
Ideal geometry (proteins) : Engh & Huber (2001)  
Ideal geometry (DNA, RNA) : Parkinson et al. (1996)  
Validation Pipeline (wwPDB-VP) : trunk26865

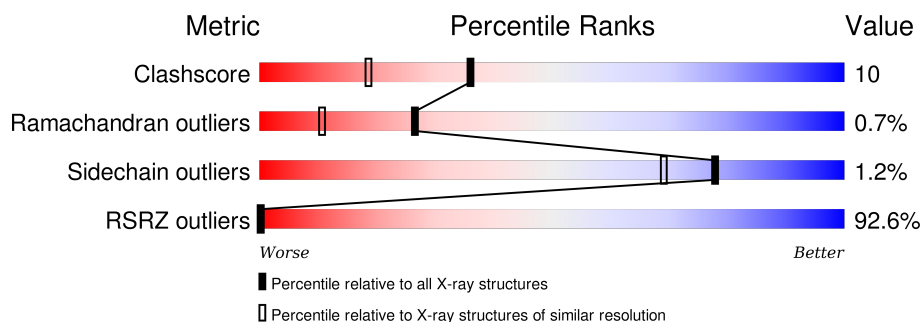
# 1 Overall quality at a glance

The following experimental techniques were used to determine the structure:

*X-RAY DIFFRACTION*

The reported resolution of this entry is 1.86 Å.

Percentile scores (ranging between 0-100) for global validation metrics of the entry are shown in the following graphic. The table shows the number of entries on which the scores are based.



Metric	Whole archive (#Entries)	Similar resolution (#Entries, resolution range(Å))
Clashscore	102246	1898 (1.86-1.86)
Ramachandran outliers	100387	1875 (1.86-1.86)
Sidechain outliers	100360	1875 (1.86-1.86)
RSRZ outliers	91569	1747 (1.86-1.86)

The table below summarises the geometric issues observed across the polymeric chains and their fit to the electron density. The red, orange, yellow and green segments on the lower bar indicate the fraction of residues that contain outliers for  $\geq 3$ , 2, 1 and 0 types of geometric quality criteria. A grey segment represents the fraction of residues that are not modelled. The numeric value for each fraction is indicated below the corresponding segment, with a dot representing fractions  $\leq 5\%$ . The upper red bar (where present) indicates the fraction of residues that have poor fit to the electron density. The numeric value is given above the bar.

Mol	Chain	Length	Quality of chain
1	L	36	<div> <div>53%</div> <div>69% 6% 25%</div> </div>
2	H	259	<div> <div>91%</div> <div>78% 17% . .</div> </div>
3	I	12	<div> <div>75%</div> <div>75% 8% 17%</div> </div>

The following table lists non-polymeric compounds, carbohydrate monomers and non-standard residues in protein, DNA, RNA chains that are outliers for geometric or electron-density-fit criteria:

Mol	Type	Chain	Res	Chirality	Geometry	Clashes	Electron density
6	IGN	H	999	-	-	-	X

## 2 Entry composition

There are 7 unique types of molecules in this entry. The entry contains 2634 atoms, of which 0 are hydrogens and 0 are deuteriums.

In the tables below, the ZeroOcc column contains the number of atoms modelled with zero occupancy, the AltConf column contains the number of residues with at least one atom in alternate conformation and the Trace column contains the number of residues modelled with at most 2 atoms.

- Molecule 1 is a protein called Prothrombin.

Mol	Chain	Residues	Atoms					ZeroOcc	AltConf	Trace
1	L	27	Total	C	N	O	S	0	0	0
			222	140	36	45	1			

- Molecule 2 is a protein called Prothrombin.

Mol	Chain	Residues	Atoms					ZeroOcc	AltConf	Trace
2	H	249	Total	C	N	O	S	0	0	0
			2014	1283	357	360	14			

- Molecule 3 is a protein called Hirudin variant-2.

Mol	Chain	Residues	Atoms					ZeroOcc	AltConf	Trace
3	I	10	Total	C	N	O	S	0	0	0
			90	56	10	23	1			

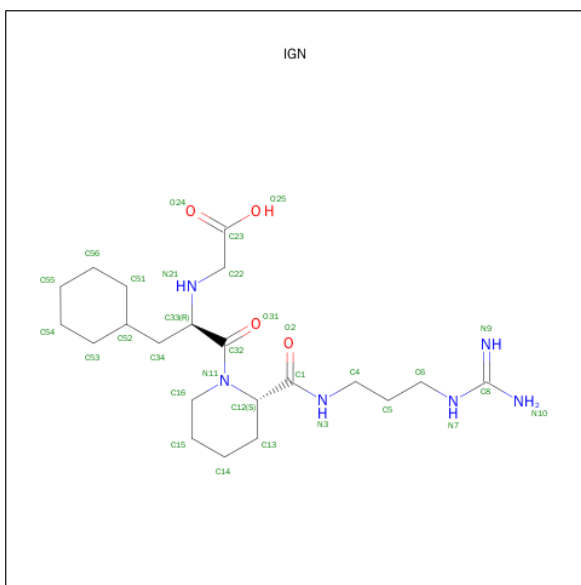
- Molecule 4 is a polymer of unknown type called SUGAR (2-MER).

Mol	Chain	Residues	Atoms				ZeroOcc	AltConf
4	H	2	Total	C	N	O	14	0
			28	16	2	10		

- Molecule 5 is SODIUM ION (three-letter code: NA) (formula: Na).

Mol	Chain	Residues	Atoms		ZeroOcc	AltConf
5	H	2	Total	Na	0	0
			2	2		

- Molecule 6 is {[ (1R)-2-((2S)-2-[[ (3-[[AMINO(IMINO)METHYL]AMINO]PROPYL)AMINO]CARBONYL]PIPERIDINYL)-1-(CYCLOHEXYLMETHYL)-2-OXOETHYL]AMINO} ACETIC ACID (three-letter code: IGN) (formula: C<sub>21</sub>H<sub>38</sub>N<sub>6</sub>O<sub>4</sub>).



Mol	Chain	Residues	Atoms				ZeroOcc	AltConf
6	H	1	Total	C	N	O	0	0
			31	21	6	4		

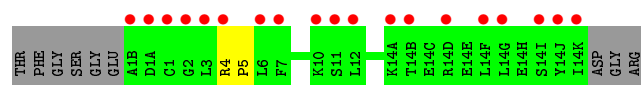
- Molecule 7 is water.

Mol	Chain	Residues	Atoms	ZeroOcc	AltConf
7	H	207	Total O 207 207	0	0
7	I	6	Total O 6 6	0	0
7	L	34	Total O 34 34	0	0

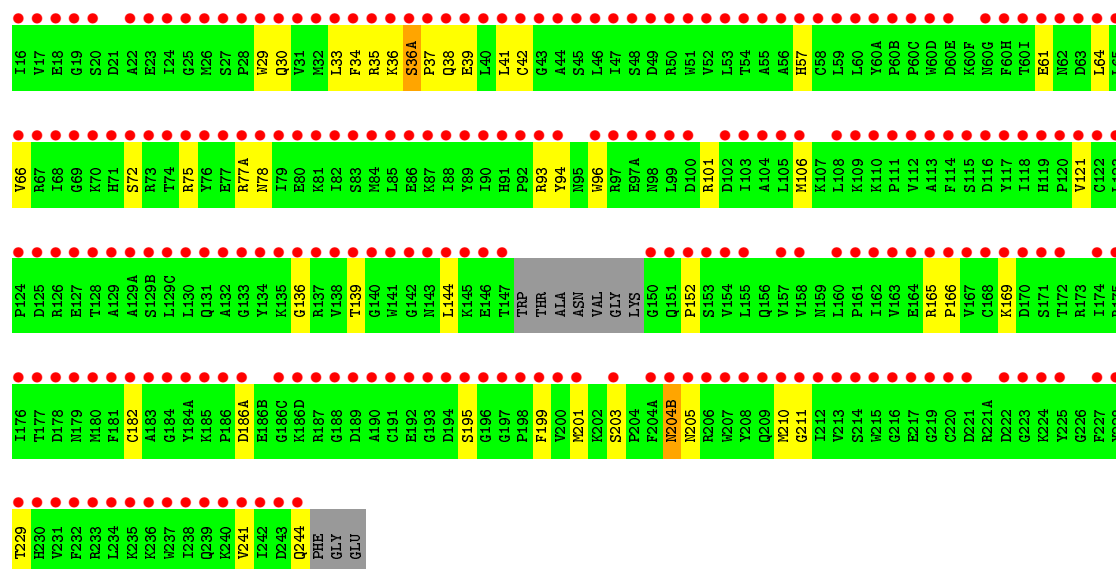
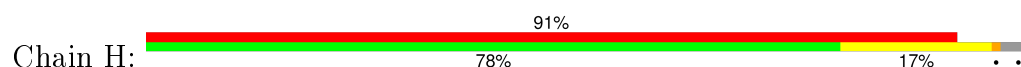
### 3 Residue-property plots [i](#)

These plots are drawn for all protein, RNA and DNA chains in the entry. The first graphic for a chain summarises the proportions of errors displayed in the second graphic. The second graphic shows the sequence view annotated by issues in geometry and electron density. Residues are color-coded according to the number of geometric quality criteria for which they contain at least one outlier: green = 0, yellow = 1, orange = 2 and red = 3 or more. A red dot above a residue indicates a poor fit to the electron density ( $\text{RSRZ} > 2$ ). Stretches of 2 or more consecutive residues without any outlier are shown as a green connector. Residues present in the sample, but not in the model, are shown in grey.

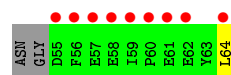
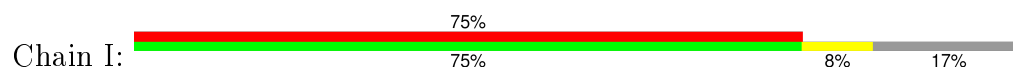
#### • Molecule 1: Prothrombin



#### • Molecule 2: Prothrombin



#### • Molecule 3: Hirudin variant-2



## 4 Data and refinement statistics

Property	Value	Source
Space group	C 1 2 1	Depositor
Cell constants a, b, c, $\alpha$ , $\beta$ , $\gamma$	69.62Å 71.55Å 71.82Å 90.00° 100.12° 90.00°	Depositor
Resolution (Å)	500.00 – 1.86 35.35 – 2.26	Depositor EDS
% Data completeness (in resolution range)	96.5 (500.00-1.86) 34.8 (35.35-2.26)	Depositor EDS
$R_{merge}$	0.05	Depositor
$R_{sym}$	0.05	Depositor
$\langle I/\sigma(I) \rangle$ <sup>1</sup>	3.85 (at 2.27Å)	Xtriage
Refinement program	X-PLOR 3.1	Depositor
R, $R_{free}$	0.216 , 0.256 0.569 , (Not available)	Depositor DCC
$R_{free}$ test set	No test flags present.	DCC
Wilson B-factor (Å <sup>2</sup> )	22.3	Xtriage
Anisotropy	0.603	Xtriage
Bulk solvent $k_{sol}$ (e/Å <sup>3</sup> ), $B_{sol}$ (Å <sup>2</sup> )	0.35 , 303.1	EDS
Estimated twinning fraction	No twinning to report.	Xtriage
L-test for twinning <sup>2</sup>	$\langle  L  \rangle = 0.51$ , $\langle L^2 \rangle = 0.34$	Xtriage
Outliers	0 of 5699 reflections	Xtriage
$F_o, F_c$ correlation	0.29	EDS
Total number of atoms	2634	wwPDB-VP
Average B, all atoms (Å <sup>2</sup> )	31.0	wwPDB-VP

Xtriage's analysis on translational NCS is as follows: *The largest off-origin peak in the Patterson function is 11.32% of the height of the origin peak. No significant pseudotranslation is detected.*

<sup>1</sup>Intensities estimated from amplitudes.

<sup>2</sup>Theoretical values of  $\langle |L| \rangle$ ,  $\langle L^2 \rangle$  for acentric reflections are 0.5, 0.375 respectively for untwinned datasets, and 0.333, 0.2 for perfectly twinned datasets.

## 5 Model quality [i](#)

### 5.1 Standard geometry [i](#)

Bond lengths and bond angles in the following residue types are not validated in this section: IGN, NAG, NA, TYS

The Z score for a bond length (or angle) is the number of standard deviations the observed value is removed from the expected value. A bond length (or angle) with  $|Z| > 5$  is considered an outlier worth inspection. RMSZ is the root-mean-square of all Z scores of the bond lengths (or angles).

Mol	Chain	Bond lengths		Bond angles	
		RMSZ	# Z  >5	RMSZ	# Z  >5
1	L	0.37	0/224	0.61	0/298
2	H	0.32	0/2065	0.62	0/2790
3	I	0.41	0/74	0.47	0/96
All	All	0.33	0/2363	0.62	0/3184

There are no bond length outliers.

There are no bond angle outliers.

There are no chirality outliers.

There are no planarity outliers.

### 5.2 Too-close contacts [i](#)

In the following table, the Non-H and H(model) columns list the number of non-hydrogen atoms and hydrogen atoms in the chain respectively. The H(added) column lists the number of hydrogen atoms added and optimized by MolProbity. The Clashes column lists the number of clashes within the asymmetric unit, whereas Symm-Clashes lists symmetry related clashes.

Mol	Chain	Non-H	H(model)	H(added)	Clashes	Symm-Clashes
1	L	222	0	226	1	0
2	H	2014	0	1998	38	0
3	I	90	0	68	1	0
4	H	28	0	25	1	0
5	H	2	0	0	0	0
6	H	31	0	36	1	0
7	H	207	0	0	6	1
7	I	6	0	0	0	0
7	L	34	0	0	0	0
All	All	2634	0	2353	41	1

The all-atom clashscore is defined as the number of clashes found per 1000 atoms (including hydrogen atoms). The all-atom clashscore for this structure is 10.

All (41) close contacts within the same asymmetric unit are listed below, sorted by their clash magnitude.

Atom-1	Atom-2	Interatomic distance (Å)	Clash overlap (Å)
2:H:72:SER:OG	2:H:75:ARG:HG2	1.78	0.82
4:H:1:NAG:H81	7:H:609:HOH:O	1.80	0.81
2:H:144:LEU:HD21	2:H:152:PRO:HB3	1.69	0.73
2:H:36(A):SER:CB	2:H:37:PRO:HD3	2.25	0.66
2:H:36(A):SER:OG	2:H:37:PRO:HD3	1.98	0.64
2:H:35:ARG:HD2	2:H:41:LEU:HD21	1.80	0.62
2:H:169:LYS:HB2	7:H:559:HOH:O	2.01	0.60
2:H:36(A):SER:HB2	2:H:37:PRO:HD3	1.88	0.56
2:H:57:HIS:CD2	6:H:999:IGN:H131	2.41	0.55
2:H:35:ARG:HB2	2:H:41:LEU:HD21	1.93	0.51
2:H:77(A):ARG:O	2:H:78:ASN:HB2	2.11	0.51
2:H:36(A):SER:CB	2:H:37:PRO:CD	2.89	0.50
2:H:241:VAL:O	2:H:244:GLN:HG3	2.11	0.50
2:H:203:SER:HB3	2:H:204(B):ASN:ND2	2.28	0.49
2:H:36(A):SER:OG	2:H:37:PRO:CD	2.60	0.49
2:H:30:GLN:NE2	2:H:139:THR:OG1	2.45	0.49
2:H:41:LEU:O	2:H:42:CYS:SG	2.72	0.47
2:H:29:TRP:CG	2:H:121:VAL:HB	2.51	0.46
2:H:34:PHE:O	2:H:64:LEU:HB2	2.16	0.46
2:H:204(B):ASN:C	2:H:204(B):ASN:HD22	2.19	0.45
2:H:165:ARG:NH1	7:H:499:HOH:O	2.49	0.45
3:I:64:LEU:N	3:I:64:LEU:HD12	2.31	0.45
2:H:136:GLY:HA3	2:H:199:PHE:CZ	2.51	0.45
2:H:165:ARG:NH2	7:H:623:HOH:O	2.49	0.45
2:H:36(A):SER:O	2:H:38:GLN:N	2.50	0.44
2:H:57:HIS:NE2	2:H:195:SER:HB3	2.32	0.44
2:H:33:LEU:HD21	2:H:106:MET:CE	2.48	0.44
2:H:93:ARG:HB2	2:H:101:ARG:HD2	2.00	0.43
1:L:4:ARG:HA	1:L:5:PRO:HD3	1.93	0.43
2:H:33:LEU:CD2	2:H:66:VAL:HG12	2.48	0.43
2:H:203:SER:O	2:H:205:ASN:HA	2.18	0.43
2:H:37:PRO:O	2:H:39:GLU:HG2	2.19	0.43
2:H:61:GLU:H	2:H:61:GLU:CD	2.21	0.43
2:H:211:GLY:HA2	2:H:229:THR:O	2.19	0.43
2:H:169:LYS:HG2	7:H:574:HOH:O	2.18	0.42
2:H:201:MET:SD	2:H:210:MET:HG3	2.59	0.42
2:H:33:LEU:HD23	2:H:66:VAL:HG12	2.01	0.42

*Continued on next page...*

Continued from previous page...

Atom-1	Atom-2	Interatomic distance (Å)	Clash overlap (Å)
2:H:203:SER:HB3	2:H:204(B):ASN:HD21	1.85	0.41
2:H:94:TYR:CZ	2:H:96:TRP:HB3	2.56	0.41
2:H:169:LYS:HD2	7:H:559:HOH:O	2.21	0.40
2:H:165:ARG:HB3	2:H:166:PRO:HD3	2.03	0.40

All (1) symmetry-related close contacts are listed below. The label for Atom-2 includes the symmetry operator and encoded unit-cell translations to be applied.

Atom-1	Atom-2	Interatomic distance (Å)	Clash overlap (Å)
7:H:660:HOH:O	7:H:660:HOH:O[2_555]	1.14	1.06

## 5.3 Torsion angles [i](#)

### 5.3.1 Protein backbone [i](#)

In the following table, the Percentiles column shows the percent Ramachandran outliers of the chain as a percentile score with respect to all X-ray entries followed by that with respect to entries of similar resolution.

The Analysed column shows the number of residues for which the backbone conformation was analysed, and the total number of residues.

Mol	Chain	Analysed	Favoured	Allowed	Outliers	Percentiles	
1	L	25/36 (69%)	24 (96%)	1 (4%)	0	100	100
2	H	245/259 (95%)	233 (95%)	10 (4%)	2 (1%)	24	9
3	I	7/12 (58%)	7 (100%)	0	0	100	100
All	All	277/307 (90%)	264 (95%)	11 (4%)	2 (1%)	26	11

All (2) Ramachandran outliers are listed below:

Mol	Chain	Res	Type
2	H	36(A)	SER
2	H	36	LYS

### 5.3.2 Protein sidechains [i](#)

In the following table, the Percentiles column shows the percent sidechain outliers of the chain as a percentile score with respect to all X-ray entries followed by that with respect to entries of similar

resolution.

The Analysed column shows the number of residues for which the sidechain conformation was analysed, and the total number of residues.

Mol	Chain	Analysed	Rotameric	Outliers	Percentiles	
1	L	25/31 (81%)	25 (100%)	0	100	100
2	H	218/225 (97%)	215 (99%)	3 (1%)	74	63
3	I	8/10 (80%)	8 (100%)	0	100	100
All	All	251/266 (94%)	248 (99%)	3 (1%)	78	69

All (3) residues with a non-rotameric sidechain are listed below:

Mol	Chain	Res	Type
2	H	182	CYS
2	H	186(A)	ASP
2	H	204(B)	ASN

Some sidechains can be flipped to improve hydrogen bonding and reduce clashes. All (4) such sidechains are listed below:

Mol	Chain	Res	Type
2	H	30	GLN
2	H	204(B)	ASN
2	H	205	ASN
2	H	209	GLN

### 5.3.3 RNA ⓘ

There are no RNA molecules in this entry.

## 5.4 Non-standard residues in protein, DNA, RNA chains ⓘ

1 non-standard protein/DNA/RNA residue is modelled in this entry.

In the following table, the Counts columns list the number of bonds (or angles) for which Mogul statistics could be retrieved, the number of bonds (or angles) that are observed in the model and the number of bonds (or angles) that are defined in the chemical component dictionary. The Link column lists molecule types, if any, to which the group is linked. The Z score for a bond length (or angle) is the number of standard deviations the observed value is removed from the expected value. A bond length (or angle) with  $|Z| > 2$  is considered an outlier worth inspection. RMSZ is the root-mean-square of all Z scores of the bond lengths (or angles).

Mol	Type	Chain	Res	Link	Bond lengths			Bond angles		
					Counts	RMSZ	# Z  > 2	Counts	RMSZ	# Z  > 2
3	TYS	I	63	3	15,16,17	1.28	2 (13%)	16,22,24	0.62	0

In the following table, the Chirals column lists the number of chiral outliers, the number of chiral centers analysed, the number of these observed in the model and the number defined in the chemical component dictionary. Similar counts are reported in the Torsion and Rings columns. '-' means no outliers of that kind were identified.

Mol	Type	Chain	Res	Link	Chirals	Torsions	Rings
3	TYS	I	63	3	-	0/9/11/13	0/1/1/1

All (2) bond length outliers are listed below:

Mol	Chain	Res	Type	Atoms	Z	Observed(Å)	Ideal(Å)
3	I	63	TYS	OH-CZ	-2.49	1.38	1.42
3	I	63	TYS	OH-S	3.37	1.70	1.63

There are no bond angle outliers.

There are no chirality outliers.

There are no torsion outliers.

There are no ring outliers.

No monomer is involved in short contacts.

## 5.5 Carbohydrates [i](#)

2 carbohydrates are modelled in this entry.

In the following table, the Counts columns list the number of bonds (or angles) for which Mogul statistics could be retrieved, the number of bonds (or angles) that are observed in the model and the number of bonds (or angles) that are defined in the chemical component dictionary. The Link column lists molecule types, if any, to which the group is linked. The Z score for a bond length (or angle) is the number of standard deviations the observed value is removed from the expected value. A bond length (or angle) with  $|Z| > 2$  is considered an outlier worth inspection. RMSZ is the root-mean-square of all Z scores of the bond lengths (or angles).

Mol	Type	Chain	Res	Link	Bond lengths			Bond angles		
					Counts	RMSZ	# Z  > 2	Counts	RMSZ	# Z  > 2
4	NAG	H	1	2,4	14,14,15	0.51	0	15,19,21	0.59	0
4	NAG	H	2	4	14,14,15	0.50	0	15,19,21	0.66	0

In the following table, the Chirals column lists the number of chiral outliers, the number of chiral

centers analysed, the number of these observed in the model and the number defined in the chemical component dictionary. Similar counts are reported in the Torsion and Rings columns. '-' means no outliers of that kind were identified.

Mol	Type	Chain	Res	Link	Chirals	Torsions	Rings
4	NAG	H	1	2,4	-	0/6/23/26	0/1/1/1
4	NAG	H	2	4	-	0/6/23/26	0/1/1/1

There are no bond length outliers.

There are no bond angle outliers.

There are no chirality outliers.

There are no torsion outliers.

There are no ring outliers.

1 monomer is involved in 1 short contact:

Mol	Chain	Res	Type	Clashes	Symm-Clashes
4	H	1	NAG	1	0

## 5.6 Ligand geometry

Of 3 ligands modelled in this entry, 2 are monoatomic - leaving 1 for Mogul analysis.

In the following table, the Counts columns list the number of bonds (or angles) for which Mogul statistics could be retrieved, the number of bonds (or angles) that are observed in the model and the number of bonds (or angles) that are defined in the chemical component dictionary. The Link column lists molecule types, if any, to which the group is linked. The Z score for a bond length (or angle) is the number of standard deviations the observed value is removed from the expected value. A bond length (or angle) with  $|Z| > 2$  is considered an outlier worth inspection. RMSZ is the root-mean-square of all Z scores of the bond lengths (or angles).

Mol	Type	Chain	Res	Link	Bond lengths			Bond angles		
					Counts	RMSZ	# Z  > 2	Counts	RMSZ	# Z  > 2
6	IGN	H	999	-	26,32,32	2.08	6 (23%)	29,41,41	2.16	7 (24%)

In the following table, the Chirals column lists the number of chiral outliers, the number of chiral centers analysed, the number of these observed in the model and the number defined in the chemical component dictionary. Similar counts are reported in the Torsion and Rings columns. '-' means no outliers of that kind were identified.

Mol	Type	Chain	Res	Link	Chirals	Torsions	Rings
6	IGN	H	999	-	-	0/25/48/48	0/2/2/2

All (6) bond length outliers are listed below:

Mol	Chain	Res	Type	Atoms	Z	Observed(Å)	Ideal(Å)
6	H	999	IGN	C32-N11	2.48	1.39	1.34
6	H	999	IGN	C33-C32	2.53	1.58	1.53
6	H	999	IGN	C51-C52	2.73	1.59	1.52
6	H	999	IGN	C34-C52	3.24	1.58	1.53
6	H	999	IGN	C16-N11	4.05	1.52	1.47
6	H	999	IGN	C12-N11	6.04	1.54	1.47

All (7) bond angle outliers are listed below:

Mol	Chain	Res	Type	Atoms	Z	Observed(°)	Ideal(°)
6	H	999	IGN	C13-C12-C1	-4.11	106.67	112.40
6	H	999	IGN	O31-C32-C33	-2.60	114.67	119.59
6	H	999	IGN	C14-C15-C16	2.13	115.47	111.26
6	H	999	IGN	C34-C33-C32	2.99	114.16	109.31
6	H	999	IGN	C33-C32-N11	3.36	124.79	118.81
6	H	999	IGN	C15-C16-N11	5.14	118.66	110.71
6	H	999	IGN	C22-N21-C33	6.49	123.73	113.81

There are no chirality outliers.

There are no torsion outliers.

There are no ring outliers.

1 monomer is involved in 1 short contact:

Mol	Chain	Res	Type	Clashes	Symm-Clashes
6	H	999	IGN	1	0

## 5.7 Other polymers [i](#)

There are no such residues in this entry.

## 5.8 Polymer linkage issues [i](#)

There are no chain breaks in this entry.

## 6 Fit of model and data ⓘ

### 6.1 Protein, DNA and RNA chains ⓘ

In the following table, the column labelled ‘#RSRZ> 2’ contains the number (and percentage) of RSRZ outliers, followed by percent RSRZ outliers for the chain as percentile scores relative to all X-ray entries and entries of similar resolution. The OWAB column contains the minimum, median, 95<sup>th</sup> percentile and maximum values of the occupancy-weighted average B-factor per residue. The column labelled ‘Q< 0.9’ lists the number of (and percentage) of residues with an average occupancy less than 0.9.

Mol	Chain	Analysed	<RSRZ>	#RSRZ>2	OWAB(Å <sup>2</sup> )	Q<0.9
1	L	27/36 (75%)	4.42	19 (70%) 0 0	20, 26, 38, 41	0
2	H	249/259 (96%)	5.30	236 (94%) 0 0	19, 28, 43, 52	0
3	I	9/12 (75%)	7.54	9 (100%) 0 0	43, 49, 55, 60	0
All	All	285/307 (92%)	5.28	264 (92%) 0 0	19, 28, 44, 60	0

All (264) RSRZ outliers are listed below:

Mol	Chain	Res	Type	RSRZ
2	H	150	GLY	18.3
1	L	1(B)	ALA	14.5
3	I	59	ILE	14.4
2	H	37	PRO	14.2
2	H	60(B)	PRO	14.0
2	H	220	CYS	13.0
2	H	90	ILE	12.1
2	H	38	GLN	12.1
2	H	59	LEU	12.0
3	I	64	LEU	11.6
2	H	112	VAL	11.2
2	H	186	PRO	11.2
2	H	128	THR	10.9
2	H	197	GLY	10.7
1	L	11	SER	10.4
2	H	64	LEU	10.2
2	H	241	VAL	10.0
2	H	60(D)	TRP	9.8
2	H	165	ARG	9.8
2	H	89	TYR	9.6
2	H	167	VAL	9.6
2	H	191	CYS	9.5
2	H	168	CYS	8.9

*Continued on next page...*

*Continued from previous page...*

Mol	Chain	Res	Type	RSRZ
2	H	129(B)	SER	8.8
2	H	232	PHE	8.7
3	I	60	PRO	8.7
2	H	131	GLN	8.7
2	H	111	PRO	8.6
2	H	174	ILE	8.5
2	H	231	VAL	8.4
2	H	164	GLU	8.4
2	H	212	ILE	8.4
2	H	82	ILE	8.4
2	H	185	LYS	8.3
2	H	129	ALA	8.3
2	H	237	TRP	8.1
2	H	103	ILE	8.1
2	H	219	GLY	8.0
2	H	151	GLN	8.0
2	H	68	ILE	7.9
1	L	3	LEU	7.8
2	H	195	SER	7.8
2	H	223	GLY	7.7
2	H	33	LEU	7.6
3	I	55	ASP	7.6
2	H	28	PRO	7.5
2	H	79	ILE	7.5
2	H	239	GLN	7.4
2	H	123	LEU	7.4
2	H	186(C)	GLY	7.3
2	H	225	TYR	7.1
2	H	53	LEU	7.0
2	H	88	ILE	7.0
2	H	125	ASP	7.0
2	H	215	TRP	6.9
2	H	162	ILE	6.9
2	H	227	PHE	6.9
2	H	198	PRO	6.9
1	L	14(K)	ILE	6.8
2	H	52	VAL	6.8
2	H	85	LEU	6.7
3	I	61	GLU	6.7
2	H	51	TRP	6.6
2	H	207	TRP	6.6
2	H	106	MET	6.6

*Continued on next page...*

*Continued from previous page...*

Mol	Chain	Res	Type	RSRZ
3	I	56	PHE	6.6
2	H	158	VAL	6.6
2	H	60(C)	PRO	6.5
2	H	117	TYR	6.5
2	H	24	ILE	6.5
2	H	63	ASP	6.5
2	H	221	ASP	6.4
2	H	176	ILE	6.4
2	H	27	SER	6.4
2	H	138	VAL	6.4
2	H	234	LEU	6.3
2	H	115	SER	6.2
1	L	14(A)	LYS	6.2
2	H	84	MET	6.1
2	H	243	ASP	6.0
2	H	19	GLY	6.0
2	H	130	LEU	6.0
1	L	6	LEU	6.0
2	H	23	GLU	5.9
1	L	14(F)	LEU	5.9
2	H	40	LEU	5.9
2	H	211	GLY	5.9
3	I	58	GLU	5.9
2	H	71	HIS	5.9
2	H	145	LYS	5.9
2	H	196	GLY	5.9
2	H	56	ALA	5.9
2	H	60(H)	PHE	5.9
2	H	190	ALA	5.8
2	H	93	ARG	5.8
1	L	14(G)	LEU	5.8
2	H	129(A)	ALA	5.8
2	H	127	GLU	5.7
2	H	44	ALA	5.7
2	H	41	LEU	5.7
2	H	65	LEU	5.7
2	H	216	GLY	5.7
2	H	72	SER	5.6
2	H	118	ILE	5.6
2	H	179	ASN	5.6
2	H	242	ILE	5.6
2	H	157	VAL	5.6

*Continued on next page...*

*Continued from previous page...*

Mol	Chain	Res	Type	RSRZ
2	H	39	GLU	5.6
2	H	78	ASN	5.6
2	H	186(D)	LYS	5.6
2	H	114	PHE	5.5
1	L	14(J)	TYR	5.5
2	H	55	ALA	5.5
2	H	144	LEU	5.4
2	H	45	SER	5.4
2	H	154	VAL	5.4
2	H	96	TRP	5.4
2	H	229	THR	5.3
2	H	29	TRP	5.3
2	H	58	CYS	5.3
2	H	181	PHE	5.3
2	H	46	LEU	5.2
2	H	189	ASP	5.2
2	H	18	GLU	5.2
2	H	199	PHE	5.2
2	H	203	SER	5.2
1	L	7	PHE	5.2
2	H	132	ALA	5.2
2	H	224	LYS	5.1
2	H	99	LEU	5.1
2	H	214	SER	5.1
2	H	104	ALA	5.1
2	H	166	PRO	5.1
2	H	60	LEU	5.1
1	L	14(D)	ARG	5.1
2	H	193	GLY	5.1
2	H	105	LEU	5.0
2	H	83	SER	5.0
2	H	16	ILE	5.0
2	H	137	ARG	5.0
2	H	86	GLU	5.0
2	H	235	LYS	4.9
2	H	228	TYR	4.9
2	H	113	ALA	4.9
2	H	48	SER	4.8
2	H	62	ASN	4.8
2	H	22	ALA	4.8
2	H	67	ARG	4.8
2	H	175	ARG	4.8

*Continued on next page...*

*Continued from previous page...*

Mol	Chain	Res	Type	RSRZ
2	H	200	VAL	4.8
2	H	213	VAL	4.8
2	H	76	TYR	4.8
2	H	124	PRO	4.8
2	H	222	ASP	4.7
2	H	36(A)	SER	4.7
2	H	110	LYS	4.7
2	H	238	ILE	4.7
2	H	204(A)	PHE	4.7
1	L	14(I)	SER	4.7
2	H	155	LEU	4.7
2	H	120	PRO	4.6
2	H	194	ASP	4.6
2	H	163	VAL	4.6
2	H	161	PRO	4.6
2	H	188	GLY	4.6
2	H	240	LYS	4.6
2	H	34	PHE	4.6
2	H	134	TYR	4.6
2	H	61	GLU	4.5
2	H	133	GLY	4.5
2	H	42	CYS	4.5
2	H	152	PRO	4.5
2	H	31	VAL	4.5
2	H	30	GLN	4.4
2	H	141	TRP	4.4
2	H	60(A)	TYR	4.4
2	H	26	MET	4.4
2	H	60(I)	THR	4.4
2	H	54	THR	4.3
2	H	32	MET	4.3
2	H	97	ARG	4.2
2	H	121	VAL	4.2
1	L	14(B)	THR	4.2
2	H	87	LYS	4.2
2	H	97(A)	GLU	4.2
2	H	147	THR	4.1
2	H	153	SER	4.1
2	H	129(C)	LEU	4.1
2	H	178	ASP	4.1
2	H	126	ARG	4.1
1	L	1(A)	ASP	4.0

*Continued on next page...*

*Continued from previous page...*

<b>Mol</b>	<b>Chain</b>	<b>Res</b>	<b>Type</b>	<b>RSRZ</b>
2	H	192	GLU	4.0
2	H	66	VAL	4.0
2	H	136	GLY	4.0
2	H	35	ARG	3.9
2	H	57	HIS	3.8
2	H	119	HIS	3.8
2	H	43	GLY	3.8
2	H	184	GLY	3.8
2	H	94	TYR	3.8
2	H	230	HIS	3.7
2	H	210	MET	3.7
1	L	1	CYS	3.7
2	H	186(A)	ASP	3.7
2	H	184(A)	TYR	3.7
1	L	4	ARG	3.6
2	H	91	HIS	3.6
2	H	50	ARG	3.6
2	H	108	LEU	3.6
2	H	143	ASN	3.6
2	H	217	GLU	3.6
2	H	171	SER	3.6
2	H	77(A)	ARG	3.5
3	I	57	GLU	3.5
2	H	49	ASP	3.5
2	H	177	THR	3.4
2	H	60(E)	ASP	3.4
2	H	180	MET	3.3
2	H	172	THR	3.3
2	H	244	GLN	3.3
2	H	183	ALA	3.3
2	H	25	GLY	3.2
2	H	17	VAL	3.2
2	H	187	ARG	3.2
2	H	92	PRO	3.2
2	H	60(G)	ASN	3.2
2	H	77	GLU	3.2
2	H	80	GLU	3.1
2	H	208	TYR	3.1
2	H	142	GLY	3.1
2	H	98	ASN	3.1
3	I	62	GLU	3.0
2	H	73	ARG	3.0

*Continued on next page...*

*Continued from previous page...*

Mol	Chain	Res	Type	RSRZ
2	H	201	MET	3.0
2	H	102	ASP	3.0
2	H	69	GLY	3.0
2	H	81	LYS	2.9
1	L	2	GLY	2.9
2	H	209	GLN	2.9
2	H	169	LYS	2.8
2	H	109	LYS	2.8
2	H	75	ARG	2.8
2	H	233	ARG	2.8
2	H	70	LYS	2.8
2	H	122	CYS	2.8
2	H	204(B)	ASN	2.7
2	H	205	ASN	2.7
2	H	20	SER	2.7
2	H	182	CYS	2.7
2	H	146	GLU	2.7
1	L	10	LYS	2.7
2	H	74	THR	2.6
2	H	170	ASP	2.6
2	H	160	LEU	2.6
1	L	12	LEU	2.5
2	H	47	ILE	2.5
2	H	36	LYS	2.5
2	H	100	ASP	2.5
2	H	140	GLY	2.5
2	H	236	LYS	2.4
2	H	139	THR	2.4
2	H	206	ARG	2.4
2	H	116	ASP	2.1
2	H	135	LYS	2.0

## 6.2 Non-standard residues in protein, DNA, RNA chains [i](#)

In the following table, the Atoms column lists the number of modelled atoms in the group and the number defined in the chemical component dictionary. LLDF column lists the quality of electron density of the group with respect to its neighbouring residues in protein, DNA or RNA chains. The B-factors column lists the minimum, median, 95<sup>th</sup> percentile and maximum values of B factors of atoms in the group. The column labelled 'Q< 0.9' lists the number of atoms with occupancy less than 0.9.

Mol	Type	Chain	Res	Atoms	RSCC	RSR	LLDF	B-factors( $\text{\AA}^2$ )	Q<0.9
3	TYS	I	63	16/17	0.65	0.54	-	40,45,55,56	0

### 6.3 Carbohydrates [i](#)

In the following table, the Atoms column lists the number of modelled atoms in the group and the number defined in the chemical component dictionary. LLDF column lists the quality of electron density of the group with respect to its neighbouring residues in protein, DNA or RNA chains. The B-factors column lists the minimum, median, 95<sup>th</sup> percentile and maximum values of B factors of atoms in the group. The column labelled 'Q< 0.9' lists the number of atoms with occupancy less than 0.9.

Mol	Type	Chain	Res	Atoms	RSCC	RSR	LLDF	B-factors( $\text{\AA}^2$ )	Q<0.9
4	NAG	H	1	14/15	0.58	0.57	-	49,52,53,53	0
4	NAG	H	2	14/15	-	-	-	49,50,50,50	14

### 6.4 Ligands [i](#)

In the following table, the Atoms column lists the number of modelled atoms in the group and the number defined in the chemical component dictionary. LLDF column lists the quality of electron density of the group with respect to its neighbouring residues in protein, DNA or RNA chains. The B-factors column lists the minimum, median, 95<sup>th</sup> percentile and maximum values of B factors of atoms in the group. The column labelled 'Q< 0.9' lists the number of atoms with occupancy less than 0.9.

Mol	Type	Chain	Res	Atoms	RSCC	RSR	LLDF	B-factors( $\text{\AA}^2$ )	Q<0.9
6	IGN	H	999	31/31	0.46	0.51	1.08	27,31,37,37	0
5	NA	H	391	1/1	0.40	0.21	-1.74	27,27,27,27	0
5	NA	H	392	1/1	0.83	0.17	-3.17	24,24,24,24	0

### 6.5 Other polymers [i](#)

There are no such residues in this entry.