



Full wwPDB X-ray Structure Validation Report ⓘ

Sep 22, 2016 – 03:13 PM EDT

PDB ID : 5K6Y
Title : Sidekick-2 immunoglobulin domains 1-4, crystal form 2
Authors : Goodman, K.M.; Mannepalli, S.; Honig, B.; Shapiro, L.
Deposited on : 2016-05-25
Resolution : 3.20 Å(reported)

This is a Full wwPDB X-ray Structure Validation Report for a publicly released PDB entry.

We welcome your comments at validation@mail.wwpdb.org

A user guide is available at

<http://wwpdb.org/validation/2016/XrayValidationReportHelp>

with specific help available everywhere you see the ⓘ symbol.

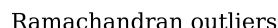
The following versions of software and data (see [references ⓘ](#)) were used in the production of this report:

MolProbity : 4.02b-467
Mogul : 1.7.1 (RC1), CSD as537be (2016)
Xtriage (Phenix) : 1.9-1692
EDS : rb-20027939
Percentile statistics : 20151230.v01 (using entries in the PDB archive December 30th 2015)
Refmac : 5.8.0135
CCP4 : 6.5.0
Ideal geometry (proteins) : Engh & Huber (2001)
Ideal geometry (DNA, RNA) : Parkinson et al. (1996)
Validation Pipeline (wwPDB-VP) : rb-20027939

i

X-RAY DIFFRACTION

A.

Ramachandran outliers

electron density. The numeric value is given above the bar.

1

2 Entry composition [i](#)

There are 4 unique types of molecules in this entry. The entry contains 5544 atoms, of which 0 are hydrogens and 0 are deuteriums.

In the tables below, the ZeroOcc column contains the number of atoms modelled with zero occupancy, the AltConf column contains the number of residues with at least one atom in alternate conformation and the Trace column contains the number of residues modelled with at most 2 atoms.

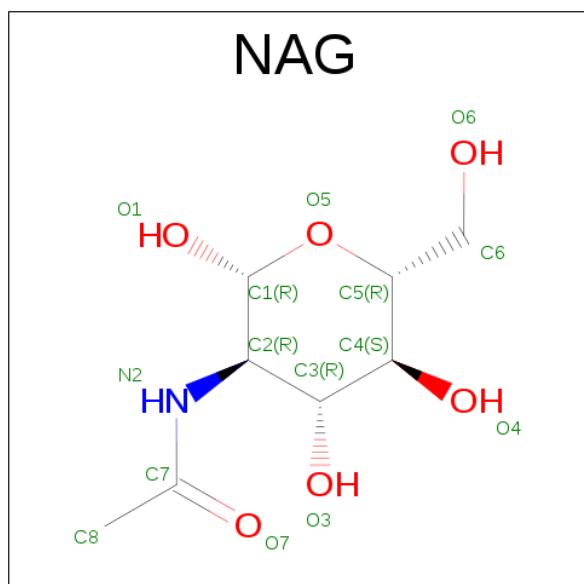
- Molecule 1 is a protein called Protein sidekick-2.

Mol	Chain	Residues	Atoms					ZeroOcc	AltConf	Trace
1	A	374	Total	C	N	O	S	0	1	0
			2786	1767	479	526	14			
1	B	365	Total	C	N	O	S	0	0	0
			2647	1681	450	503	13			

There are 4 discrepancies between the modelled and reference sequences:

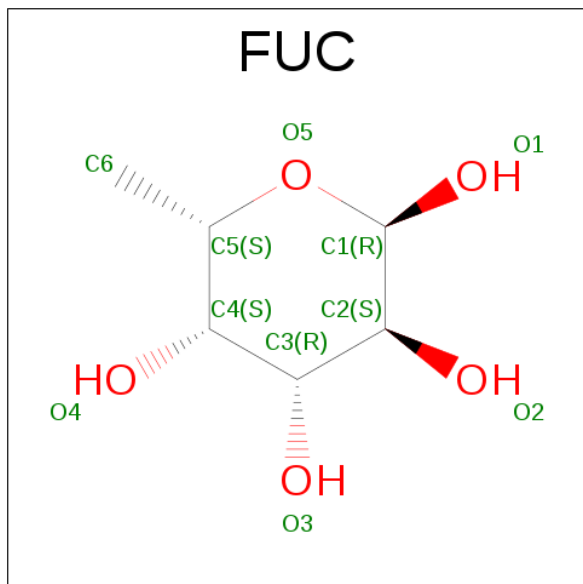
Chain	Residue	Modelled	Actual	Comment	Reference
A	-4	GLY	-	expression tag	UNP Q6V4S5
A	-3	PRO	-	expression tag	UNP Q6V4S5
B	-4	GLY	-	expression tag	UNP Q6V4S5
B	-3	PRO	-	expression tag	UNP Q6V4S5

- Molecule 2 is N-ACETYL-D-GLUCOSAMINE (three-letter code: NAG) (formula: $C_8H_{15}NO_6$).



Mol	Chain	Residues	Atoms				ZeroOcc	AltConf
2	A	1	Total	C	N	O	0	0
			14	8	1	5		
2	A	1	Total	C	N	O	0	0
			14	8	1	5		
2	A	1	Total	C	N	O	0	0
			14	8	1	5		
2	A	1	Total	C	N	O	0	0
			14	8	1	5		
2	B	1	Total	C	N	O	0	0
			14	8	1	5		
2	B	1	Total	C	N	O	0	0
			14	8	1	5		

- Molecule 3 is ALPHA-L-FUCOSE (three-letter code: FUC) (formula: C₆H₁₂O₅).



Mol	Chain	Residues	Atoms			ZeroOcc	AltConf
3	A	1	Total	C	O	0	0
			10	6	4		
3	B	1	Total	C	O	0	0
			10	6	4		


- Molecule 4 is water.

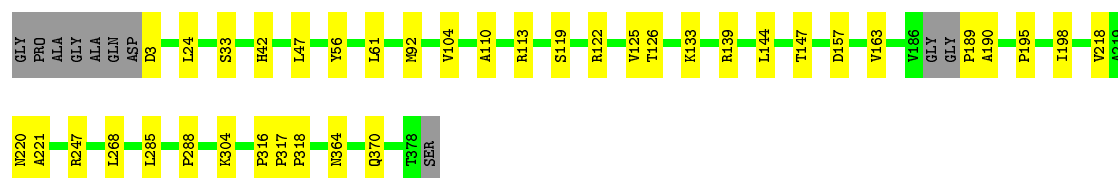
Mol	Chain	Residues	Atoms		ZeroOcc	AltConf
4	A	6	Total	O	0	0
			6	6		
4	B	1	Total	O	0	0
			1	1		

3 Residue-property plots [i](#)


These plots are drawn for all protein, RNA and DNA chains in the entry. The first graphic for a chain summarises the proportions of errors displayed in the second graphic. The second graphic shows the sequence view annotated by issues in geometry and electron density. Residues are color-coded according to the number of geometric quality criteria for which they contain at least one outlier: green = 0, yellow = 1, orange = 2 and red = 3 or more. A red dot above a residue indicates a poor fit to the electron density ($RSRZ > 2$). Stretches of 2 or more consecutive residues without any outlier are shown as a green connector. Residues present in the sample, but not in the model, are shown in grey.

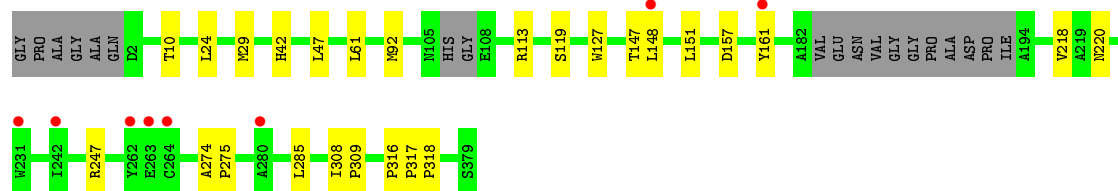
• Molecule 1: Protein sidekick-2

Chain A: 



• Molecule 1: Protein sidekick-2

Chain B: 



4 Data and refinement statistics

Property	Value	Source
Space group	P 21 21 21	Depositor
Cell constants a, b, c, α , β , γ	82.61Å 88.29Å 106.56Å 90.00° 90.00° 90.00°	Depositor
Resolution (Å)	44.77 – 3.20 44.78 – 3.20	Depositor EDS
% Data completeness (in resolution range)	94.5 (44.77-3.20) 91.5 (44.78-3.20)	Depositor EDS
R_{merge}	0.12	Depositor
R_{sym}	(Not available)	Depositor
$\langle I/\sigma(I) \rangle$ ¹	2.55 (at 3.19Å)	Xtrriage
Refinement program	PHENIX (phenix.refine: 1.9_1692)	Depositor
R, R_{free}	0.206 , 0.248 0.206 , 0.247	Depositor DCC
R_{free} test set	650 reflections (5.31%)	DCC
Wilson B-factor (Å ²)	74.4	Xtrriage
Anisotropy	0.135	Xtrriage
Bulk solvent k_{sol} (e/Å ³), B_{sol} (Å ²)	0.32 , 64.2	EDS
L-test for twinning ²	$\langle L \rangle = 0.46$, $\langle L^2 \rangle = 0.29$	Xtrriage
Estimated twinning fraction	No twinning to report.	Xtrriage
F_o, F_c correlation	0.90	EDS
Total number of atoms	5544	wwPDB-VP
Average B, all atoms (Å ²)	77.0	wwPDB-VP

Xtrriage's analysis on translational NCS is as follows: *The largest off-origin peak in the Patterson function is 6.07% of the height of the origin peak. No significant pseudotranslation is detected.*

¹Intensities estimated from amplitudes.

²Theoretical values of $\langle |L| \rangle$, $\langle L^2 \rangle$ for acentric reflections are 0.5, 0.333 respectively for untwinned datasets, and 0.375, 0.2 for perfectly twinned datasets.

5 Model quality

5.1 Standard geometry

Bond lengths and bond angles in the following residue types are not validated in this section: NAG, FUC

The Z score for a bond length (or angle) is the number of standard deviations the observed value is removed from the expected value. A bond length (or angle) with $|Z| > 5$ is considered an outlier worth inspection. RMSZ is the root-mean-square of all Z scores of the bond lengths (or angles).

Mol	Chain	Bond lengths		Bond angles	
		RMSZ	$\# Z > 5$	RMSZ	$\# Z > 5$
1	A	0.21	0/2853	0.40	0/3906
1	B	0.21	0/2707	0.41	0/3711
All	All	0.21	0/5560	0.41	0/7617

There are no bond length outliers.

There are no bond angle outliers.

There are no chirality outliers.

There are no planarity outliers.

5.2 Too-close contacts

In the following table, the Non-H and H(model) columns list the number of non-hydrogen atoms and hydrogen atoms in the chain respectively. The H(added) column lists the number of hydrogen atoms added and optimized by MolProbity. The Clashes column lists the number of clashes within the asymmetric unit, whereas Symm-Clashes lists symmetry related clashes.

Mol	Chain	Non-H	H(model)	H(added)	Clashes	Symm-Clashes
1	A	2786	0	2679	21	0
1	B	2647	0	2475	13	0
2	A	56	0	49	1	0
2	B	28	0	24	0	0
3	A	10	0	10	0	0
3	B	10	0	10	0	0
4	A	6	0	0	0	0
4	B	1	0	0	0	0
All	All	5544	0	5247	35	0

The all-atom clashscore is defined as the number of clashes found per 1000 atoms (including hydrogen atoms). The all-atom clashscore for this structure is 3.

All (35) close contacts within the same asymmetric unit are listed below, sorted by their clash magnitude.

Atom-1	Atom-2	Interatomic distance (Å)	Clash overlap (Å)
1:A:198:ILE:HD11	1:A:220:ASN:HB2	1.68	0.76
1:A:139:ARG:NH2	1:A:157:ASP:OD2	2.30	0.64
1:B:24:LEU:HB2	1:B:61:LEU:HD11	1.84	0.59
1:B:42:HIS:HB2	1:B:47:LEU:HD11	1.87	0.56
1:A:122:ARG:NH2	1:A:144:LEU:O	2.38	0.56
1:B:157:ASP:O	1:B:161:TYR:OH	2.17	0.55
1:A:218:VAL:HG22	1:A:247:ARG:HD2	1.89	0.54
1:A:42:HIS:HB2	1:A:47:LEU:HD11	1.91	0.52
1:B:151:LEU:O	1:B:220:ASN:ND2	2.43	0.52
1:A:288:PRO:HD3	1:A:364:ASN:OD1	2.10	0.52
1:A:125:VAL:HG13	1:A:163:VAL:HG13	1.91	0.52
1:A:24:LEU:HB2	1:A:61:LEU:HD11	1.92	0.51
1:A:126:THR:HG21	1:A:133:LYS:HE2	1.93	0.50
1:A:3:ASP:N	1:A:33:SER:HG	2.11	0.48
1:B:92:MET:HG3	1:B:119:SER:HB2	1.95	0.48
1:A:47:LEU:HD13	1:A:56:TYR:CZ	2.49	0.48
1:B:113:ARG:HA	1:B:147:THR:HG23	1.96	0.47
1:A:304:LYS:HB2	1:A:304:LYS:HZ2	1.80	0.47
2:A:401:NAG:H62	2:A:402:NAG:O5	2.15	0.46
1:B:218:VAL:HG22	1:B:247:ARG:HD3	1.98	0.45
1:A:317:PRO:HA	1:A:318:PRO:HD3	1.74	0.45
1:A:104:VAL:HG11	1:A:110:ALA:HB2	1.98	0.45
1:A:285:LEU:HD22	1:A:316:PRO:HD3	1.99	0.44
1:B:10:THR:HG22	1:B:29:MET:HB2	1.99	0.44
1:B:127:TRP:CE2	1:B:148:LEU:HB2	2.52	0.44
1:B:274:ALA:HA	1:B:275:PRO:HD3	1.91	0.43
1:B:317:PRO:HA	1:B:318:PRO:HD3	1.75	0.43
1:A:139:ARG:HH22	1:A:157:ASP:CG	2.22	0.42
1:A:92:MET:HG3	1:A:119:SER:HB2	2.01	0.42
1:A:189:PRO:HB2	1:A:190:ALA:H	1.71	0.42
1:B:285:LEU:HD22	1:B:316:PRO:HD3	2.03	0.41
1:A:195:PRO:HA	1:A:220:ASN:O	2.21	0.40
1:A:113:ARG:HA	1:A:147:THR:HG23	2.02	0.40
1:A:221:ALA:HB1	1:A:268:LEU:HD21	2.03	0.40
1:B:308:ILE:HA	1:B:309:PRO:HD3	1.82	0.40

There are no symmetry-related clashes.

5.3 Torsion angles

5.3.1 Protein backbone

In the following table, the Percentiles column shows the percent Ramachandran outliers of the chain as a percentile score with respect to all X-ray entries followed by that with respect to entries of similar resolution.

The Analysed column shows the number of residues for which the backbone conformation was analysed, and the total number of residues.

Mol	Chain	Analysed	Favoured	Allowed	Outliers	Percentiles	
1	A	371/384 (97%)	370 (100%)	1 (0%)	0	100	100
1	B	359/384 (94%)	352 (98%)	7 (2%)	0	100	100
All	All	730/768 (95%)	722 (99%)	8 (1%)	0	100	100

There are no Ramachandran outliers to report.

5.3.2 Protein sidechains

In the following table, the Percentiles column shows the percent sidechain outliers of the chain as a percentile score with respect to all X-ray entries followed by that with respect to entries of similar resolution.

The Analysed column shows the number of residues for which the sidechain conformation was analysed, and the total number of residues.

Mol	Chain	Analysed	Rotameric	Outliers	Percentiles	
1	A	289/324 (89%)	288 (100%)	1 (0%)	94	98
1	B	263/324 (81%)	263 (100%)	0	100	100
All	All	552/648 (85%)	551 (100%)	1 (0%)	95	99

All (1) residues with a non-rotameric sidechain are listed below:

Mol	Chain	Res	Type
1	A	370	GLN

Some sidechains can be flipped to improve hydrogen bonding and reduce clashes. All (1) such sidechains are listed below:

Mol	Chain	Res	Type
1	A	339	GLN

5.3.3 RNA ⓘ

There are no RNA molecules in this entry.

5.4 Non-standard residues in protein, DNA, RNA chains ⓘ

There are no non-standard protein/DNA/RNA residues in this entry.

5.5 Carbohydrates ⓘ

There are no carbohydrates in this entry.

5.6 Ligand geometry ⓘ

8 ligands are modelled in this entry.

In the following table, the Counts columns list the number of bonds (or angles) for which Mogul statistics could be retrieved, the number of bonds (or angles) that are observed in the model and the number of bonds (or angles) that are defined in the chemical component dictionary. The Link column lists molecule types, if any, to which the group is linked. The Z score for a bond length (or angle) is the number of standard deviations the observed value is removed from the expected value. A bond length (or angle) with $|Z| > 2$ is considered an outlier worth inspection. RMSZ is the root-mean-square of all Z scores of the bond lengths (or angles).

Mol	Type	Chain	Res	Link	Bond lengths			Bond angles		
					Counts	RMSZ	# $ Z > 2$	Counts	RMSZ	# $ Z > 2$
2	NAG	A	401	1,3,2	14,14,15	0.55	0	15,19,21	0.52	0
2	NAG	A	402	2	14,14,15	0.29	0	15,19,21	0.29	0
3	FUC	A	403	2	10,10,11	0.80	1 (10%)	13,14,16	0.72	0
2	NAG	A	404	1,2	14,14,15	0.52	0	15,19,21	0.39	0
2	NAG	A	405	2	14,14,15	0.18	0	15,19,21	0.34	0
3	FUC	B	401	2	10,10,11	0.86	1 (10%)	13,14,16	0.72	0
2	NAG	B	402	1,3,2	14,14,15	0.47	0	15,19,21	0.35	0
2	NAG	B	403	2	14,14,15	0.21	0	15,19,21	0.32	0

In the following table, the Chirals column lists the number of chiral outliers, the number of chiral centers analysed, the number of these observed in the model and the number defined in the chemical component dictionary. Similar counts are reported in the Torsion and Rings columns. '-' means no outliers of that kind were identified.

Mol	Type	Chain	Res	Link	Chirals	Torsions	Rings
2	NAG	A	401	1,3,2	-	0/6/23/26	0/1/1/1
2	NAG	A	402	2	-	0/6/23/26	0/1/1/1

Continued on next page...

Continued from previous page...

Mol	Type	Chain	Res	Link	Chirals	Torsions	Rings
3	FUC	A	403	2	-	0/0/17/20	0/1/1/1
2	NAG	A	404	1,2	-	0/6/23/26	0/1/1/1
2	NAG	A	405	2	-	0/6/23/26	0/1/1/1
3	FUC	B	401	2	-	0/0/17/20	0/1/1/1
2	NAG	B	402	1,3,2	-	0/6/23/26	0/1/1/1
2	NAG	B	403	2	-	0/6/23/26	0/1/1/1

All (2) bond length outliers are listed below:

Mol	Chain	Res	Type	Atoms	Z	Observed(Å)	Ideal(Å)
3	B	401	FUC	O5-C1	-2.09	1.40	1.43
3	A	403	FUC	O5-C1	-2.02	1.40	1.43

There are no bond angle outliers.

There are no chirality outliers.

There are no torsion outliers.

There are no ring outliers.

2 monomers are involved in 1 short contact:

Mol	Chain	Res	Type	Clashes	Symm-Clashes
2	A	401	NAG	1	0
2	A	402	NAG	1	0

5.7 Other polymers [i](#)

There are no such residues in this entry.

5.8 Polymer linkage issues [i](#)

There are no chain breaks in this entry.

6 Fit of model and data [i](#)

6.1 Protein, DNA and RNA chains [i](#)

In the following table, the column labelled ‘#RSRZ> 2’ contains the number (and percentage) of RSRZ outliers, followed by percent RSRZ outliers for the chain as percentile scores relative to all X-ray entries and entries of similar resolution. The OWAB column contains the minimum, median, 95th percentile and maximum values of the occupancy-weighted average B-factor per residue. The column labelled ‘Q< 0.9’ lists the number of (and percentage) of residues with an average occupancy less than 0.9.

Mol	Chain	Analysed	<RSRZ>	#RSRZ>2	OWAB(Å ²)	Q<0.9
1	A	374/384 (97%)	-0.16	0 100 100	43, 66, 107, 145	0
1	B	365/384 (95%)	0.03	8 (2%) 65 50	50, 83, 127, 154	0
All	All	739/768 (96%)	-0.06	8 (1%) 82 72	43, 72, 121, 154	0

All (8) RSRZ outliers are listed below:

Mol	Chain	Res	Type	RSRZ
1	B	231	TRP	3.7
1	B	263	GLU	3.0
1	B	148	LEU	2.4
1	B	242	ILE	2.4
1	B	264	CYS	2.4
1	B	280	ALA	2.4
1	B	161	TYR	2.3
1	B	262	TYR	2.1

6.2 Non-standard residues in protein, DNA, RNA chains [i](#)

There are no non-standard protein/DNA/RNA residues in this entry.

6.3 Carbohydrates [i](#)

There are no carbohydrates in this entry.

6.4 Ligands [i](#)

In the following table, the Atoms column lists the number of modelled atoms in the group and the number defined in the chemical component dictionary. LLDF column lists the quality of electron density of the group with respect to its neighbouring residues in protein, DNA or RNA chains.

The B-factors column lists the minimum, median, 95th percentile and maximum values of B factors of atoms in the group. The column labelled 'Q< 0.9' lists the number of atoms with occupancy less than 0.9.

Mol	Type	Chain	Res	Atoms	RSCC	RSR	LLDF	B-factors(Å ²)	Q<0.9
2	NAG	A	404	14/15	0.80	0.21	-	88,101,108,119	0
2	NAG	B	402	14/15	0.88	0.38	-	99,119,126,130	0
3	FUC	B	401	10/11	0.91	0.25	-	112,119,122,123	0
2	NAG	B	403	14/15	0.71	0.41	-	115,130,133,135	0
2	NAG	A	402	14/15	0.81	0.30	-	106,117,125,127	0
2	NAG	A	405	14/15	0.83	0.32	-	124,128,132,132	0
2	NAG	A	401	14/15	0.89	0.17	-	66,82,90,102	0
3	FUC	A	403	10/11	0.95	0.22	-	72,78,80,86	0

6.5 Other polymers [i](#)

There are no such residues in this entry.