



wwPDB X-ray Structure Validation Summary Report ⓘ

Dec 13, 2016 – 07:04 AM EST

PDB ID : 5KD0
Title : Crystal structure of the aromatic prenyltransferase AtaPT(E91A) mutant from *Aspergillus terreus* A8-4 in complex with geranyl S-thiolodiphosphate and (+)-butyrolactone II
Authors : Sun, F.; Gao, B.
Deposited on : 2016-06-07
Resolution : 2.82 Å(reported)

This is a wwPDB X-ray Structure Validation Summary Report for a publicly released PDB entry.

We welcome your comments at validation@mail.wwpdb.org

A user guide is available at

<http://wwpdb.org/validation/2016/XrayValidationReportHelp>

with specific help available everywhere you see the ⓘ symbol.

The following versions of software and data (see [references ⓘ](#)) were used in the production of this report:

MolProbity : 4.02b-467
Mogul : 1.7.1 (RC1), CSD as537be (2016)
Xtriage (Phenix) : 1.9-1692
EDS : rb-20028442
Percentile statistics : 20151230.v01 (using entries in the PDB archive December 30th 2015)
Refmac : 5.8.0135
CCP4 : 6.5.0
Ideal geometry (proteins) : Engh & Huber (2001)
Ideal geometry (DNA, RNA) : Parkinson et al. (1996)
Validation Pipeline (wwPDB-VP) : rb-20028442

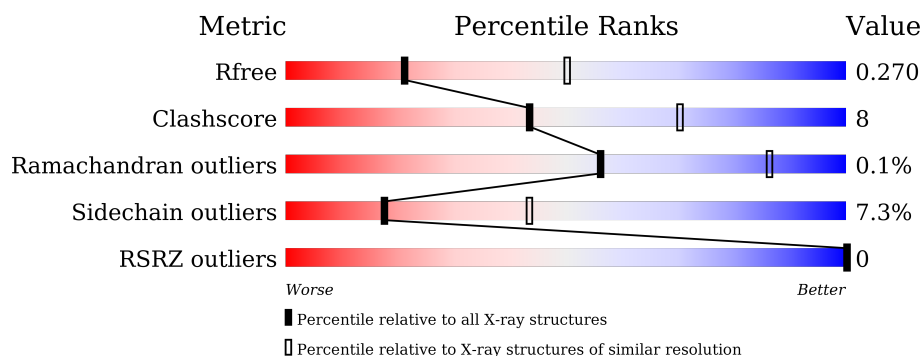
1 Overall quality at a glance ⓘ

The following experimental techniques were used to determine the structure:

X-RAY DIFFRACTION

The reported resolution of this entry is 2.82 Å.

Percentile scores (ranging between 0-100) for global validation metrics of the entry are shown in the following graphic. The table shows the number of entries on which the scores are based.



Metric	Whole archive (#Entries)	Similar resolution (#Entries, resolution range(Å))
R_{free}	91344	2676 (2.84-2.80)
Clashscore	102246	3124 (2.84-2.80)
Ramachandran outliers	100387	3072 (2.84-2.80)
Sidechain outliers	100360	3074 (2.84-2.80)
RSRZ outliers	91569	2690 (2.84-2.80)

The table below summarises the geometric issues observed across the polymeric chains and their fit to the electron density. The red, orange, yellow and green segments on the lower bar indicate the fraction of residues that contain outliers for ≥ 3 , 2, 1 and 0 types of geometric quality criteria. A grey segment represents the fraction of residues that are not modelled. The numeric value for each fraction is indicated below the corresponding segment, with a dot representing fractions $\leq 5\%$. The upper red bar (where present) indicates the fraction of residues that have poor fit to the electron density. The numeric value is given above the bar.

Mol	Chain	Length	Quality of chain
1	A	416	<div> <div style="width: 72%;"></div> <div style="width: 20%;"></div> <div style="width: 5%;"></div> <div style="width: 3%;"></div> </div> <div>72% 20% . .</div>
1	B	416	<div> <div style="width: 76%;"></div> <div style="width: 15%;"></div> <div style="width: 5%;"></div> <div style="width: 3%;"></div> </div> <div>76% 15% . 5%</div>

The following table lists non-polymeric compounds, carbohydrate monomers and non-standard residues in protein, DNA, RNA chains that are outliers for geometric or electron-density-fit criteria:

Mol	Type	Chain	Res	Chirality	Geometry	Clashes	Electron density
2	XBU	A	501	-	-	-	X

2 Entry composition [i](#)

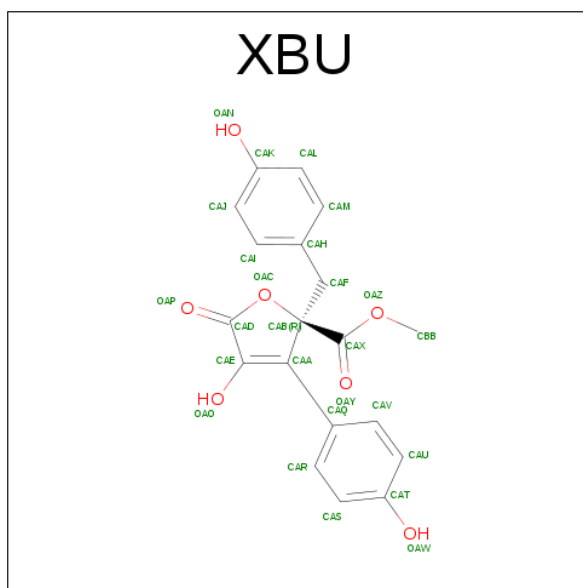
There are 4 unique types of molecules in this entry. The entry contains 6366 atoms, of which 0 are hydrogens and 0 are deuteriums.

In the tables below, the ZeroOcc column contains the number of atoms modelled with zero occupancy, the AltConf column contains the number of residues with at least one atom in alternate conformation and the Trace column contains the number of residues modelled with at most 2 atoms.

- Molecule 1 is a protein called aromatic prenyltransferase.

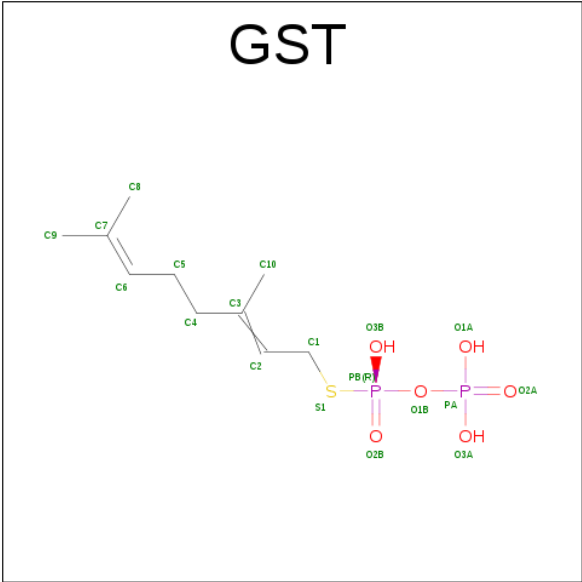
Mol	Chain	Residues	Atoms					ZeroOcc	AltConf	Trace
1	A	398	Total	C	N	O	S	0	0	0
			3152	2039	526	574	13			
1	B	397	Total	C	N	O	S	0	0	0
			3141	2033	522	573	13			

- Molecule 2 is methyl (2 {R})-3-(4-hydroxyphenyl)-2-[(4-hydroxyphenyl)methyl]-4-oxidanyl-5-oxidanylidene-furan-2-carboxylate (three-letter code: XBU) (formula: C₁₉H₁₆O₇).



Mol	Chain	Residues	Atoms			ZeroOcc	AltConf
2	A	1	Total	C	O	0	0
			26	19	7		

- Molecule 3 is GERANYL S-THIOLODIPHOSPHATE (three-letter code: GST) (formula: C₁₀H₂₀O₆P₂S).



Mol	Chain	Residues	Atoms					ZeroOcc	AltConf
3	A	1	Total	C	O	P	S	0	0
			19	10	6	2	1		
3	B	1	Total	C	O	P	S	0	0
			19	10	6	2	1		

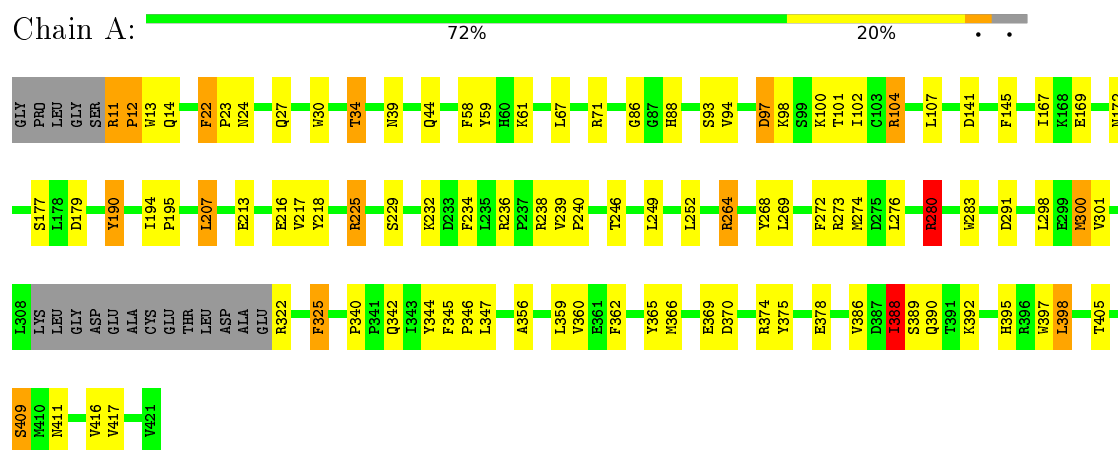
- Molecule 4 is water.

Mol	Chain	Residues	Atoms		ZeroOcc	AltConf
4	A	4	Total	O	0	0
			4	4		
4	B	5	Total	O	0	0
			5	5		

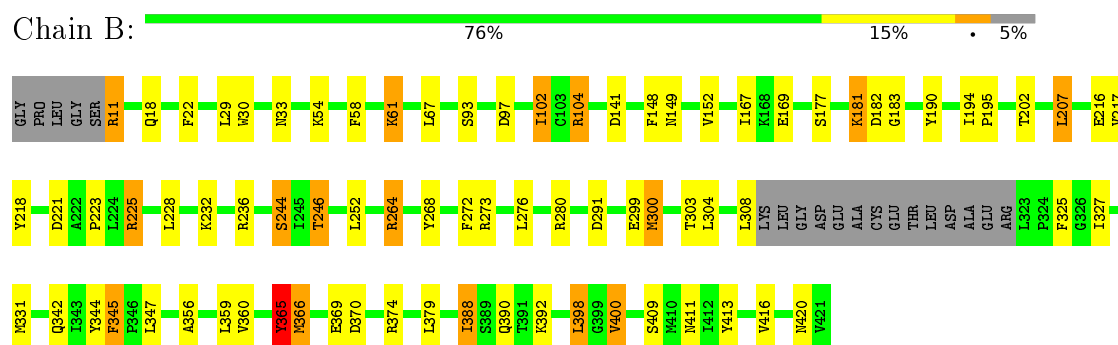
3 Residue-property plots

These plots are drawn for all protein, RNA and DNA chains in the entry. The first graphic for a chain summarises the proportions of errors displayed in the second graphic. The second graphic shows the sequence view annotated by issues in geometry and electron density. Residues are color-coded according to the number of geometric quality criteria for which they contain at least one outlier: green = 0, yellow = 1, orange = 2 and red = 3 or more. A red dot above a residue indicates a poor fit to the electron density ($RSRZ > 2$). Stretches of 2 or more consecutive residues without any outlier are shown as a green connector. Residues present in the sample, but not in the model, are shown in grey.

- Molecule 1: aromatic prenyltransferase



- Molecule 1: aromatic prenyltransferase



4 Data and refinement statistics

Property	Value	Source
Space group	P 2 ₁ 2 ₁ 2	Depositor
Cell constants a, b, c, α , β , γ	96.69 Å 139.24 Å 68.80 Å 90.00° 90.00° 90.00°	Depositor
Resolution (Å)	139.24 – 2.82 56.06 – 2.82	Depositor EDS
% Data completeness (in resolution range)	98.5 (139.24-2.82) 98.5 (56.06-2.82)	Depositor EDS
R_{merge}	(Not available)	Depositor
R_{sym}	0.09	Depositor
$\langle I/\sigma(I) \rangle$ ¹	4.16 (at 2.81 Å)	Xtriage
Refinement program	REFMAC 5.8.0073	Depositor
R, R_{free}	0.205 , 0.268 0.207 , 0.270	Depositor DCC
R_{free} test set	1144 reflections (5.30%)	DCC
Wilson B-factor (Å ²)	44.3	Xtriage
Anisotropy	0.118	Xtriage
Bulk solvent k_{sol} (e/Å ³), B_{sol} (Å ²)	0.32 , 26.3	EDS
L-test for twinning ²	$\langle L \rangle = 0.49$, $\langle L^2 \rangle = 0.32$	Xtriage
Estimated twinning fraction	No twinning to report.	Xtriage
F_o, F_c correlation	0.92	EDS
Total number of atoms	6366	wwPDB-VP
Average B, all atoms (Å ²)	41.0	wwPDB-VP

Xtriage's analysis on translational NCS is as follows: *The largest off-origin peak in the Patterson function is 4.07% of the height of the origin peak. No significant pseudotranslation is detected.*

¹Intensities estimated from amplitudes.

²Theoretical values of $\langle |L| \rangle$, $\langle L^2 \rangle$ for acentric reflections are 0.5, 0.333 respectively for untwinned datasets, and 0.375, 0.2 for perfectly twinned datasets.

5 Model quality [i](#)

5.1 Standard geometry [i](#)

Bond lengths and bond angles in the following residue types are not validated in this section: XBU, GST

The Z score for a bond length (or angle) is the number of standard deviations the observed value is removed from the expected value. A bond length (or angle) with $|Z| > 5$ is considered an outlier worth inspection. RMSZ is the root-mean-square of all Z scores of the bond lengths (or angles).

Mol	Chain	Bond lengths		Bond angles	
		RMSZ	# Z >5	RMSZ	# Z >5
1	A	0.90	18/3232 (0.6%)	0.98	15/4397 (0.3%)
1	B	0.88	17/3221 (0.5%)	1.00	15/4383 (0.3%)
All	All	0.89	35/6453 (0.5%)	0.99	30/8780 (0.3%)

The worst 5 of 35 bond length outliers are listed below:

Mol	Chain	Res	Type	Atoms	Z	Observed(Å)	Ideal(Å)
1	A	236	ARG	CZ-NH1	-9.97	1.20	1.33
1	B	236	ARG	CZ-NH1	-9.52	1.20	1.33
1	B	365	TYR	CE1-CZ	-9.14	1.26	1.38
1	A	365	TYR	CE1-CZ	-8.25	1.27	1.38
1	A	365	TYR	CG-CD2	-7.13	1.29	1.39

The worst 5 of 30 bond angle outliers are listed below:

Mol	Chain	Res	Type	Atoms	Z	Observed(°)	Ideal(°)
1	A	225	ARG	NE-CZ-NH1	-18.30	111.15	120.30
1	B	225	ARG	NE-CZ-NH2	-17.46	111.57	120.30
1	B	225	ARG	NE-CZ-NH1	15.39	128.00	120.30
1	A	225	ARG	NE-CZ-NH2	15.02	127.81	120.30
1	B	236	ARG	NE-CZ-NH2	13.25	126.92	120.30

There are no chirality outliers.

There are no planarity outliers.

5.2 Too-close contacts [i](#)

In the following table, the Non-H and H(model) columns list the number of non-hydrogen atoms and hydrogen atoms in the chain respectively. The H(added) column lists the number of hydrogen

atoms added and optimized by MolProbity. The Clashes column lists the number of clashes within the asymmetric unit, whereas Symm-Clashes lists symmetry related clashes.

Mol	Chain	Non-H	H(model)	H(added)	Clashes	Symm-Clashes
1	A	3152	0	3167	53	1
1	B	3141	0	3154	44	1
2	A	26	0	0	6	0
3	A	19	0	17	6	0
3	B	19	0	17	2	0
4	A	4	0	0	1	0
4	B	5	0	0	1	0
All	All	6366	0	6355	103	1

The all-atom clashscore is defined as the number of clashes found per 1000 atoms (including hydrogen atoms). The all-atom clashscore for this structure is 8.

The worst 5 of 103 close contacts within the same asymmetric unit are listed below, sorted by their clash magnitude.

Atom-1	Atom-2	Interatomic distance (Å)	Clash overlap (Å)
1:A:12:PRO:HD2	1:A:39:ASN:ND2	1.64	1.11
1:A:11:ARG:NH1	1:A:14:GLN:OE1	1.89	1.04
1:A:12:PRO:CD	1:A:39:ASN:HD21	1.73	1.01
1:A:12:PRO:HD2	1:A:39:ASN:HD21	0.79	0.94
1:B:300:MET:HG2	1:B:366:MET:HE1	1.54	0.87

All (1) symmetry-related close contacts are listed below. The label for Atom-2 includes the symmetry operator and encoded unit-cell translations to be applied.

Atom-1	Atom-2	Interatomic distance (Å)	Clash overlap (Å)
1:A:273:ARG:NH1	1:B:299:GLU:OE1[4_556]	1.98	0.22

5.3 Torsion angles [i](#)

5.3.1 Protein backbone [i](#)

In the following table, the Percentiles column shows the percent Ramachandran outliers of the chain as a percentile score with respect to all X-ray entries followed by that with respect to entries of similar resolution.

The Analysed column shows the number of residues for which the backbone conformation was analysed, and the total number of residues.

Mol	Chain	Analysed	Favoured	Allowed	Outliers	Percentiles	
1	A	394/416 (95%)	376 (95%)	18 (5%)	0	100	100
1	B	393/416 (94%)	377 (96%)	15 (4%)	1 (0%)	46	78
All	All	787/832 (95%)	753 (96%)	33 (4%)	1 (0%)	56	86

All (1) Ramachandran outliers are listed below:

Mol	Chain	Res	Type
1	B	291	ASP

5.3.2 Protein sidechains ⓘ

In the following table, the Percentiles column shows the percent sidechain outliers of the chain as a percentile score with respect to all X-ray entries followed by that with respect to entries of similar resolution.

The Analysed column shows the number of residues for which the sidechain conformation was analysed, and the total number of residues.

Mol	Chain	Analysed	Rotameric	Outliers	Percentiles	
1	A	342/355 (96%)	311 (91%)	31 (9%)	12	32
1	B	341/355 (96%)	322 (94%)	19 (6%)	26	58
All	All	683/710 (96%)	633 (93%)	50 (7%)	17	43

5 of 50 residues with a non-rotameric sidechain are listed below:

Mol	Chain	Res	Type
1	A	386	VAL
1	A	398	LEU
1	B	392	LYS
1	A	388	ILE
1	A	390	GLN

Some sidechains can be flipped to improve hydrogen bonding and reduce clashes. 5 of 14 such sidechains are listed below:

Mol	Chain	Res	Type
1	A	411	ASN
1	B	18	GLN
1	B	342	GLN
1	A	390	GLN
1	B	214	GLN

5.3.3 RNA ⓘ

There are no RNA molecules in this entry.

5.4 Non-standard residues in protein, DNA, RNA chains ⓘ

There are no non-standard protein/DNA/RNA residues in this entry.

5.5 Carbohydrates ⓘ

There are no carbohydrates in this entry.

5.6 Ligand geometry ⓘ

3 ligands are modelled in this entry.

In the following table, the Counts columns list the number of bonds (or angles) for which Mogul statistics could be retrieved, the number of bonds (or angles) that are observed in the model and the number of bonds (or angles) that are defined in the chemical component dictionary. The Link column lists molecule types, if any, to which the group is linked. The Z score for a bond length (or angle) is the number of standard deviations the observed value is removed from the expected value. A bond length (or angle) with $|Z| > 2$ is considered an outlier worth inspection. RMSZ is the root-mean-square of all Z scores of the bond lengths (or angles).

Mol	Type	Chain	Res	Link	Bond lengths			Bond angles		
					Counts	RMSZ	# $ Z > 2$	Counts	RMSZ	# $ Z > 2$
2	XBU	A	501	-	27,28,28	2.89	6 (22%)	28,41,41	2.25	7 (25%)
3	GST	A	502	-	13,18,18	3.37	5 (38%)	16,25,25	2.09	6 (37%)
3	GST	B	501	-	13,18,18	3.42	5 (38%)	16,25,25	1.82	5 (31%)

In the following table, the Chirals column lists the number of chiral outliers, the number of chiral centers analysed, the number of these observed in the model and the number defined in the chemical component dictionary. Similar counts are reported in the Torsion and Rings columns. '-' means no outliers of that kind were identified.

Mol	Type	Chain	Res	Link	Chirals	Torsions	Rings
2	XBU	A	501	-	-	0/17/36/36	0/3/3/3
3	GST	A	502	-	-	0/13/19/19	0/0/0/0
3	GST	B	501	-	-	0/13/19/19	0/0/0/0

The worst 5 of 16 bond length outliers are listed below:

Mol	Chain	Res	Type	Atoms	Z	Observed(Å)	Ideal(Å)
2	A	501	XBU	CAB-CAX	-8.29	1.41	1.53
2	A	501	XBU	CAF-CAH	-7.46	1.39	1.51
2	A	501	XBU	CAQ-CAA	-6.44	1.34	1.48
2	A	501	XBU	CAE-CAD	-5.60	1.31	1.45
3	B	501	GST	PB-O3B	-2.71	1.49	1.56

The worst 5 of 18 bond angle outliers are listed below:

Mol	Chain	Res	Type	Atoms	Z	Observed(°)	Ideal(°)
2	A	501	XBU	OAP-CAD-CAE	-6.87	120.91	129.30
3	A	502	GST	C4-C5-C6	-4.47	99.87	111.61
2	A	501	XBU	CAV-CAQ-CAA	-3.87	115.16	120.86
3	B	501	GST	C4-C5-C6	-3.16	103.32	111.61
3	A	502	GST	C1-C2-C3	-3.02	123.63	127.74

There are no chirality outliers.

There are no torsion outliers.

There are no ring outliers.

3 monomers are involved in 9 short contacts:

Mol	Chain	Res	Type	Clashes	Symm-Clashes
2	A	501	XBU	6	0
3	A	502	GST	6	0
3	B	501	GST	2	0

5.7 Other polymers [i](#)

There are no such residues in this entry.

5.8 Polymer linkage issues [i](#)

There are no chain breaks in this entry.

6 Fit of model and data [i](#)

6.1 Protein, DNA and RNA chains [i](#)

In the following table, the column labelled ‘#RSRZ> 2’ contains the number (and percentage) of RSRZ outliers, followed by percent RSRZ outliers for the chain as percentile scores relative to all X-ray entries and entries of similar resolution. The OWAB column contains the minimum, median, 95th percentile and maximum values of the occupancy-weighted average B-factor per residue. The column labelled ‘Q< 0.9’ lists the number of (and percentage) of residues with an average occupancy less than 0.9.

Mol	Chain	Analysed	<RSRZ>	#RSRZ>2	OWAB(Å ²)	Q<0.9
1	A	398/416 (95%)	-0.24	0 100 100	18, 39, 66, 88	0
1	B	397/416 (95%)	-0.29	0 100 100	17, 41, 64, 92	0
All	All	795/832 (95%)	-0.26	0 100 100	17, 40, 65, 92	0

There are no RSRZ outliers to report.

6.2 Non-standard residues in protein, DNA, RNA chains [i](#)

There are no non-standard protein/DNA/RNA residues in this entry.

6.3 Carbohydrates [i](#)

There are no carbohydrates in this entry.

6.4 Ligands [i](#)

In the following table, the Atoms column lists the number of modelled atoms in the group and the number defined in the chemical component dictionary. LLDF column lists the quality of electron density of the group with respect to its neighbouring residues in protein, DNA or RNA chains. The B-factors column lists the minimum, median, 95th percentile and maximum values of B factors of atoms in the group. The column labelled ‘Q< 0.9’ lists the number of atoms with occupancy less than 0.9.

Mol	Type	Chain	Res	Atoms	RSCC	RSR	LLDF	B-factors(Å ²)	Q<0.9
2	XBU	A	501	26/26	0.80	0.46	8.40	67,78,86,86	0
3	GST	A	502	19/19	0.94	0.22	0.64	43,49,55,55	0
3	GST	B	501	19/19	0.95	0.17	-0.55	58,66,79,81	0

6.5 Other polymers [i](#)

There are no such residues in this entry.