



Full wwPDB X-ray Structure Validation Report ⓘ

Jan 31, 2016 – 08:27 PM GMT

PDB ID : 1KEP
Title : The crystal structure of dTDP-D-glucose 4,6-dehydratase (RmlB) from *Streptococcus suis* with dTDP-xylose bound
Authors : Allard, S.T.M.; Beis, K.; Giraud, M.-F.; Hegeman, A.D.; Gross, J.W.; Whitfield, C.; Graninger, M.; Messner, P.; Allen, A. G.; Naismith, J.H.
Deposited on : 2001-11-16
Resolution : 1.80 Å(reported)

This is a Full wwPDB X-ray Structure Validation Report for a publicly released PDB entry.
We welcome your comments at validation@mail.wwpdb.org
A user guide is available at
<http://wwpdb.org/validation/2016/XrayValidationReportHelp>
with specific help available everywhere you see the ⓘ symbol.

The following versions of software and data (see [references ⓘ](#)) were used in the production of this report:

MolProbity : 4.02b-467
Mogul : 1.7 (RC4), CSD as536be (2015)
Xtriage (Phenix) : **NOT EXECUTED**
EDS : **NOT EXECUTED**
Percentile statistics : 20151230.v01 (using entries in the PDB archive December 30th 2015)
Ideal geometry (proteins) : Engh & Huber (2001)
Ideal geometry (DNA, RNA) : Parkinson et al. (1996)
Validation Pipeline (wwPDB-VP) : trunk26865

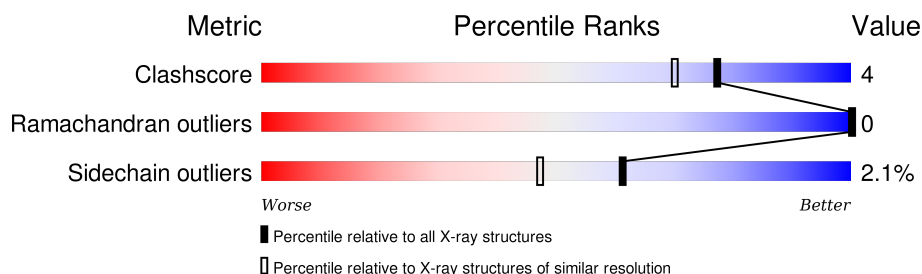
1 Overall quality at a glance

The following experimental techniques were used to determine the structure:

X-RAY DIFFRACTION

The reported resolution of this entry is 1.80 Å.

Percentile scores (ranging between 0-100) for global validation metrics of the entry are shown in the following graphic. The table shows the number of entries on which the scores are based.



Metric	Whole archive (#Entries)	Similar resolution (#Entries, resolution range(Å))
Clashscore	102246	5383 (1.80-1.80)
Ramachandran outliers	100387	5320 (1.80-1.80)
Sidechain outliers	100360	5319 (1.80-1.80)

The table below summarises the geometric issues observed across the polymeric chains and their fit to the electron density. The red, orange, yellow and green segments on the lower bar indicate the fraction of residues that contain outliers for ≥ 3 , 2, 1 and 0 types of geometric quality criteria. A grey segment represents the fraction of residues that are not modelled. The numeric value for each fraction is indicated below the corresponding segment, with a dot representing fractions $\leq 5\%$. The upper red bar (where present) indicates the fraction of residues that have poor fit to the electron density. The numeric value is given above the bar.

Note EDS was not executed.

Mol	Chain	Length	Quality of chain
1	A	348	 91% 7% ..
1	B	348	 90% 9% ..

2 Entry composition [i](#)

There are 5 unique types of molecules in this entry. The entry contains 6431 atoms, of which 0 are hydrogens and 0 are deuteriums.

In the tables below, the ZeroOcc column contains the number of atoms modelled with zero occupancy, the AltConf column contains the number of residues with at least one atom in alternate conformation and the Trace column contains the number of residues modelled with at most 2 atoms.

- Molecule 1 is a protein called dTDP-D-glucose 4,6-dehydratase.

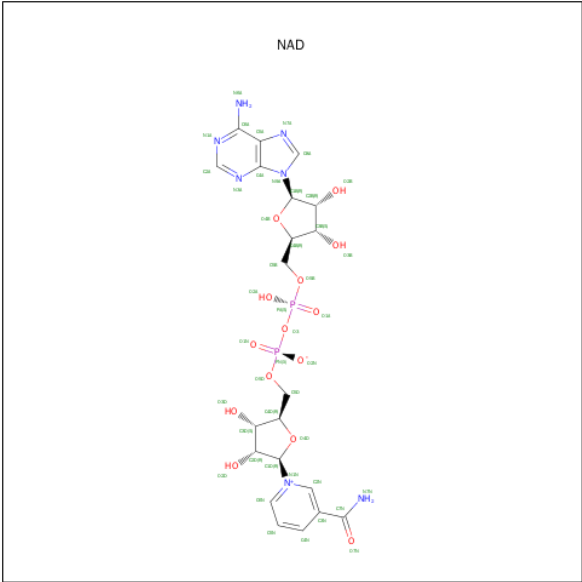
Mol	Chain	Residues	Atoms					ZeroOcc	AltConf	Trace
1	A	346	Total	C	N	O	S	0	0	0
			2741	1736	468	534	3			
1	B	346	Total	C	N	O	S	0	0	0
			2737	1733	467	534	3			

- Molecule 2 is SULFATE ION (three-letter code: SO₄) (formula: O₄S).



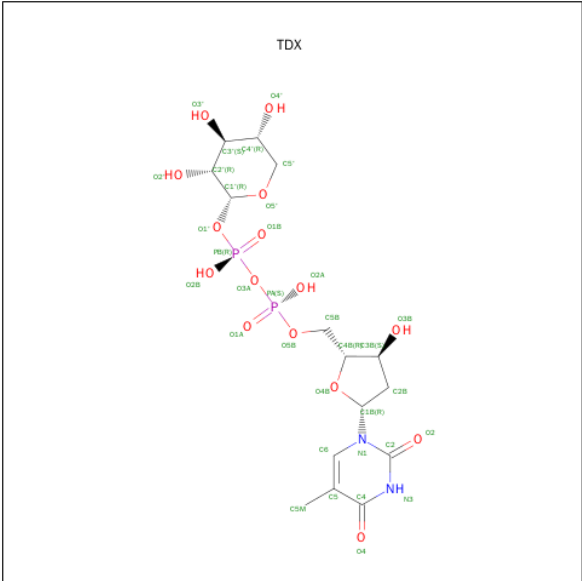
Mol	Chain	Residues	Atoms			ZeroOcc	AltConf
2	A	1	Total	O	S	0	0
			5	4	1		
2	A	1	Total	O	S	0	0
			5	4	1		
2	B	1	Total	O	S	0	0
			5	4	1		

- Molecule 3 is NICOTINAMIDE-ADENINE-DINUCLEOTIDE (three-letter code: NAD) (formula: C₂₁H₂₇N₇O₁₄P₂).



Mol	Chain	Residues	Atoms					ZeroOcc	AltConf
3	A	1	Total	C	N	O	P	0	0
			44	21	7	14	2		
3	B	1	Total	C	N	O	P	0	0
			44	21	7	14	2		

- Molecule 4 is THYMIDINE-5'-DIPHOSPHO-BETA-D-XYLOSE (three-letter code: TDX) (formula: C₁₅H₂₄N₂O₁₅P₂).



Mol	Chain	Residues	Atoms			ZeroOcc	AltConf
4	A	1	Total	C	O	0	0
			12	5	7		

Continued on next page...

Continued from previous page...

Mol	Chain	Residues	Atoms					ZeroOcc	AltConf
4	B	1	Total	C	N	O	P	0	0
			34	15	2	15	2		

- Molecule 5 is water.

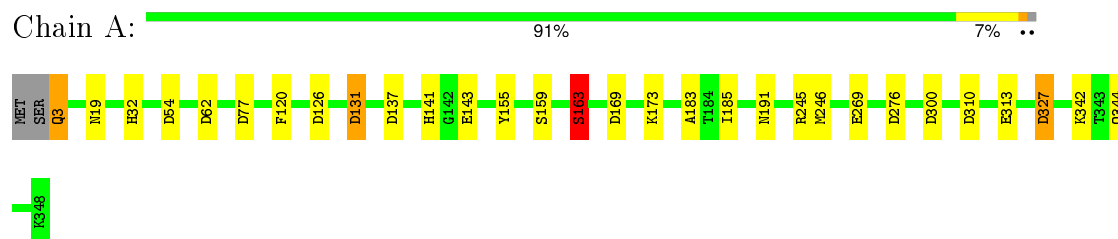
Mol	Chain	Residues	Atoms		ZeroOcc	AltConf
5	A	438	Total	O	0	0
			438	438		
5	B	366	Total	O	0	0
			366	366		

3 Residue-property plots

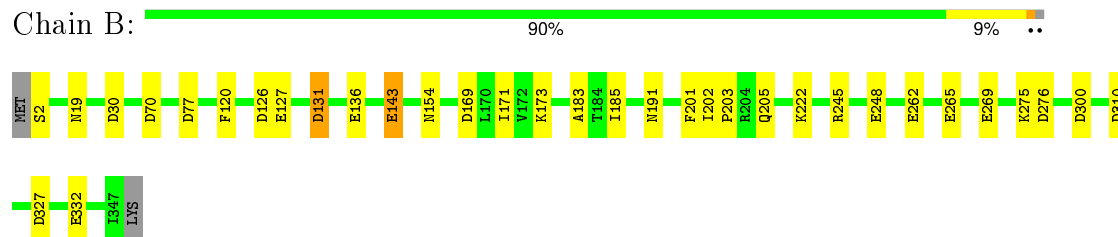
These plots are drawn for all protein, RNA and DNA chains in the entry. The first graphic for a chain summarises the proportions of errors displayed in the second graphic. The second graphic shows the sequence view annotated by issues in geometry and electron density. Residues are color-coded according to the number of geometric quality criteria for which they contain at least one outlier: green = 0, yellow = 1, orange = 2 and red = 3 or more. A red dot above a residue indicates a poor fit to the electron density ($RSRZ > 2$). Stretches of 2 or more consecutive residues without any outlier are shown as a green connector. Residues present in the sample, but not in the model, are shown in grey.

Note EDS was not executed.

- Molecule 1: dTDP-D-glucose 4,6-dehydratase



- Molecule 1: dTDP-D-glucose 4,6-dehydratase



4 Data and refinement statistics

Xtriage (Phenix) and EDS were not executed - this section will therefore be incomplete.

Property	Value	Source
Space group	P 21 21 21	Depositor
Cell constants a, b, c, α , β , γ	62.45Å 97.18Å 185.47Å 90.00° 90.00° 90.00°	Depositor
Resolution (Å)	91.29 – 1.80	Depositor
% Data completeness (in resolution range)	96.8 (91.29-1.80)	Depositor
R_{merge}	0.09	Depositor
R_{sym}	0.08	Depositor
Refinement program	REFMAC 5	Depositor
R, R_{free}	0.145 , 0.172	Depositor
Estimated twinning fraction	No twinning to report.	Xtriage
Total number of atoms	6431	wwPDB-VP
Average B, all atoms (Å ²)	8.0	wwPDB-VP

5 Model quality [i](#)

5.1 Standard geometry [i](#)

Bond lengths and bond angles in the following residue types are not validated in this section: TDX, SO4, NAD

The Z score for a bond length (or angle) is the number of standard deviations the observed value is removed from the expected value. A bond length (or angle) with $|Z| > 5$ is considered an outlier worth inspection. RMSZ is the root-mean-square of all Z scores of the bond lengths (or angles).

Mol	Chain	Bond lengths		Bond angles	
		RMSZ	$\# Z > 5$	RMSZ	$\# Z > 5$
1	A	0.96	4/2809 (0.1%)	1.09	16/3817 (0.4%)
1	B	0.86	2/2805 (0.1%)	0.95	11/3814 (0.3%)
All	All	0.91	6/5614 (0.1%)	1.02	27/7631 (0.4%)

All (6) bond length outliers are listed below:

Mol	Chain	Res	Type	Atoms	Z	Observed(Å)	Ideal(Å)
1	A	163	SER	CA-CB	9.68	1.67	1.52
1	A	131	ASP	CB-CG	-9.29	1.32	1.51
1	B	131	ASP	CB-CG	-9.01	1.32	1.51
1	A	131	ASP	CA-CB	7.99	1.71	1.53
1	A	344	GLN	CB-CG	-7.61	1.31	1.52
1	B	332	GLU	CD-OE2	6.98	1.33	1.25

All (27) bond angle outliers are listed below:

Mol	Chain	Res	Type	Atoms	Z	Observed(°)	Ideal(°)
1	A	131	ASP	CB-CG-OD1	-27.39	93.65	118.30
1	A	131	ASP	CB-CG-OD2	22.08	138.18	118.30
1	B	131	ASP	CB-CG-OD1	-17.98	102.11	118.30
1	B	131	ASP	CB-CG-OD2	15.20	131.98	118.30
1	A	163	SER	CA-CB-OG	-9.73	84.92	111.20
1	A	300	ASP	CB-CG-OD2	9.63	126.96	118.30
1	B	310	ASP	CB-CG-OD2	8.37	125.84	118.30
1	A	77	ASP	CB-CG-OD2	7.41	124.97	118.30
1	B	300	ASP	CB-CG-OD2	7.22	124.80	118.30
1	A	276	ASP	CB-CG-OD2	7.15	124.73	118.30
1	A	54	ASP	CB-CG-OD2	7.06	124.66	118.30
1	A	131	ASP	CB-CA-C	-6.42	97.56	110.40
1	B	131	ASP	CB-CA-C	-6.01	98.38	110.40

Continued on next page...

Continued from previous page...

Mol	Chain	Res	Type	Atoms	Z	Observed(°)	Ideal(°)
1	B	276	ASP	CB-CG-OD2	6.00	123.70	118.30
1	A	310	ASP	CB-CG-OD2	5.79	123.51	118.30
1	A	137	ASP	CB-CG-OD2	5.75	123.47	118.30
1	B	77	ASP	CB-CG-OD2	5.73	123.46	118.30
1	A	126	ASP	CB-CG-OD1	5.64	123.38	118.30
1	B	126	ASP	CB-CG-OD1	5.54	123.28	118.30
1	A	344	GLN	CB-CA-C	-5.51	99.37	110.40
1	A	327	ASP	CB-CG-OD2	5.48	123.23	118.30
1	A	3	GLN	CA-CB-CG	5.38	125.24	113.40
1	A	169	ASP	CB-CG-OD1	5.30	123.07	118.30
1	B	327	ASP	CB-CG-OD2	5.29	123.06	118.30
1	B	70	ASP	CB-CG-OD2	5.19	122.97	118.30
1	B	169	ASP	CB-CG-OD1	5.19	122.97	118.30
1	A	62	ASP	CB-CG-OD1	5.10	122.89	118.30

There are no chirality outliers.

There are no planarity outliers.

5.2 Too-close contacts ⓘ

In the following table, the Non-H and H(model) columns list the number of non-hydrogen atoms and hydrogen atoms in the chain respectively. The H(added) column lists the number of hydrogen atoms added and optimized by MolProbity. The Clashes column lists the number of clashes within the asymmetric unit, whereas Symm-Clashes lists symmetry related clashes.

Mol	Chain	Non-H	H(model)	H(added)	Clashes	Symm-Clashes
1	A	2741	0	2627	20	0
1	B	2737	0	2621	21	0
2	A	10	0	0	0	0
2	B	5	0	0	0	0
3	A	44	0	26	0	0
3	B	44	0	26	1	0
4	A	12	0	9	0	0
4	B	34	0	22	2	0
5	A	438	0	0	14	1
5	B	366	0	0	11	0
All	All	6431	0	5331	41	1

The all-atom clashscore is defined as the number of clashes found per 1000 atoms (including hydrogen atoms). The all-atom clashscore for this structure is 4.

All (41) close contacts within the same asymmetric unit are listed below, sorted by their clash

magnitude.

Atom-1	Atom-2	Interatomic distance (Å)	Clash overlap (Å)
1:B:265:GLU:HG2	5:B:6269:HOH:O	1.64	0.95
1:A:19:ASN:OD1	5:A:6433:HOH:O	1.94	0.85
1:B:2:SER:HA	5:B:6039:HOH:O	1.79	0.82
1:A:19:ASN:HB2	5:A:6100:HOH:O	1.82	0.79
1:B:2:SER:OG	5:B:6359:HOH:O	2.02	0.77
1:B:19:ASN:HB3	5:B:6218:HOH:O	1.81	0.77
1:B:136:GLU:CD	5:B:6362:HOH:O	2.22	0.77
1:A:327:ASP:HB2	5:A:6190:HOH:O	1.84	0.77
1:B:2:SER:CA	5:B:6039:HOH:O	2.37	0.72
1:A:173:LYS:HE2	1:A:185:ILE:HD12	1.73	0.70
1:A:313:GLU:HG3	5:A:6340:HOH:O	1.93	0.69
1:B:173:LYS:HE3	1:B:185:ILE:HD12	1.75	0.66
1:B:173:LYS:CE	1:B:185:ILE:HD12	2.27	0.65
1:A:159:SER:O	1:A:163:SER:HB2	2.01	0.61
1:B:245:ARG:NH1	1:B:248:GLU:OE2	2.34	0.60
1:B:173:LYS:HE3	1:B:185:ILE:CD1	2.31	0.59
3:B:2400:NAD:C3N	4:B:4500:TDX:H4'	2.34	0.57
1:A:245:ARG:HD2	5:A:6214:HOH:O	2.03	0.57
1:A:141:HIS:CD2	5:A:6387:HOH:O	2.59	0.55
1:A:141:HIS:CG	5:A:6387:HOH:O	2.61	0.53
1:A:19:ASN:HB2	5:A:6433:HOH:O	2.11	0.50
1:B:2:SER:HB3	1:B:30:ASP:OD2	2.12	0.50
1:B:154:ASN:HA	5:B:6358:HOH:O	2.13	0.49
1:A:155:TYR:CD2	5:B:6265:HOH:O	2.65	0.49
1:A:173:LYS:CE	1:A:185:ILE:HD12	2.39	0.49
1:B:2:SER:HB2	5:B:6348:HOH:O	2.13	0.49
1:A:155:TYR:OH	5:A:6164:HOH:O	2.19	0.48
1:B:127:GLU:OE1	4:B:4500:TDX:H5B	2.14	0.48
1:A:19:ASN:CB	5:A:6433:HOH:O	2.62	0.47
1:B:120:PHE:O	1:B:183:ALA:HA	2.15	0.47
1:B:143:GLU:HG3	5:B:6296:HOH:O	2.15	0.47
1:B:201:PHE:O	1:B:205:GLN:HG2	2.14	0.47
1:A:3:GLN:NE2	5:A:6343:HOH:O	2.48	0.47
1:A:141:HIS:CE1	5:A:6387:HOH:O	2.69	0.45
1:A:163:SER:HB3	1:B:171:ILE:HG22	2.00	0.43
1:A:32:HIS:HE1	5:A:6090:HOH:O	2.02	0.42
1:B:173:LYS:HE2	1:B:185:ILE:HD12	2.00	0.42
1:A:342:LYS:HE2	5:A:6294:HOH:O	2.20	0.41
1:B:202:ILE:N	1:B:203:PRO:HD2	2.36	0.41
1:B:222:LYS:HG2	5:B:6132:HOH:O	2.20	0.41
1:A:120:PHE:O	1:A:183:ALA:HA	2.20	0.40

All (1) symmetry-related close contacts are listed below. The label for Atom-2 includes the symmetry operator and encoded unit-cell translations to be applied.

Atom-1	Atom-2	Interatomic distance (Å)	Clash overlap (Å)
5:A:6295:HOH:O	5:A:6298:HOH:O[4_556]	2.17	0.03

5.3 Torsion angles [i](#)

5.3.1 Protein backbone [i](#)

In the following table, the Percentiles column shows the percent Ramachandran outliers of the chain as a percentile score with respect to all X-ray entries followed by that with respect to entries of similar resolution.

The Analysed column shows the number of residues for which the backbone conformation was analysed, and the total number of residues.

Mol	Chain	Analysed	Favoured	Allowed	Outliers	Percentiles	
1	A	344/348 (99%)	331 (96%)	13 (4%)	0	100	100
1	B	344/348 (99%)	333 (97%)	11 (3%)	0	100	100
All	All	688/696 (99%)	664 (96%)	24 (4%)	0	100	100

There are no Ramachandran outliers to report.

5.3.2 Protein sidechains [i](#)

In the following table, the Percentiles column shows the percent sidechain outliers of the chain as a percentile score with respect to all X-ray entries followed by that with respect to entries of similar resolution.

The Analysed column shows the number of residues for which the sidechain conformation was analysed, and the total number of residues.

Mol	Chain	Analysed	Rotameric	Outliers	Percentiles	
1	A	289/291 (99%)	283 (98%)	6 (2%)	61	47
1	B	289/291 (99%)	283 (98%)	6 (2%)	61	47
All	All	578/582 (99%)	566 (98%)	12 (2%)	61	47

All (12) residues with a non-rotameric sidechain are listed below:

Mol	Chain	Res	Type
1	A	131	ASP
1	A	143	GLU
1	A	163	SER
1	A	191	ASN
1	A	246	MET
1	A	269	GLU
1	B	131	ASP
1	B	143	GLU
1	B	191	ASN
1	B	262	GLU
1	B	269	GLU
1	B	275	LYS

Some sidechains can be flipped to improve hydrogen bonding and reduce clashes. All (15) such sidechains are listed below:

Mol	Chain	Res	Type
1	A	3	GLN
1	A	19	ASN
1	A	32	HIS
1	A	191	ASN
1	A	196	GLN
1	A	231	ASN
1	A	260	ASN
1	B	32	HIS
1	B	141	HIS
1	B	191	ASN
1	B	196	GLN
1	B	231	ASN
1	B	260	ASN
1	B	273	GLN
1	B	339	ASN

5.3.3 RNA ⓘ

There are no RNA molecules in this entry.

5.4 Non-standard residues in protein, DNA, RNA chains ⓘ

There are no non-standard protein/DNA/RNA residues in this entry.

5.5 Carbohydrates [i](#)

There are no carbohydrates in this entry.

5.6 Ligand geometry [i](#)

7 ligands are modelled in this entry.

In the following table, the Counts columns list the number of bonds (or angles) for which Mogul statistics could be retrieved, the number of bonds (or angles) that are observed in the model and the number of bonds (or angles) that are defined in the chemical component dictionary. The Link column lists molecule types, if any, to which the group is linked. The Z score for a bond length (or angle) is the number of standard deviations the observed value is removed from the expected value. A bond length (or angle) with $|Z| > 2$ is considered an outlier worth inspection. RMSZ is the root-mean-square of all Z scores of the bond lengths (or angles).

Mol	Type	Chain	Res	Link	Bond lengths			Bond angles		
					Counts	RMSZ	# $ Z > 2$	Counts	RMSZ	# $ Z > 2$
3	NAD	A	1400	-	38,48,48	1.32	3 (7%)	47,73,73	1.66	7 (14%)
4	TDX	A	3500	-	10,10,36	0.63	0	12,14,55	0.82	1 (8%)
2	SO4	A	6001	-	4,4,4	0.60	0	6,6,6	0.63	0
2	SO4	A	6002	-	4,4,4	0.54	0	6,6,6	0.41	0
3	NAD	B	2400	-	38,48,48	1.43	2 (5%)	47,73,73	1.95	4 (8%)
4	TDX	B	4500	-	28,36,36	0.76	0	41,55,55	1.63	4 (9%)
2	SO4	B	6003	-	4,4,4	0.39	0	6,6,6	0.60	0

In the following table, the Chirals column lists the number of chiral outliers, the number of chiral centers analysed, the number of these observed in the model and the number defined in the chemical component dictionary. Similar counts are reported in the Torsion and Rings columns. '-' means no outliers of that kind were identified.

Mol	Type	Chain	Res	Link	Chirals	Torsions	Rings
3	NAD	A	1400	-	-	0/22/62/62	0/5/5/5
4	TDX	A	3500	-	-	0/0/17/50	0/1/1/3
2	SO4	A	6001	-	-	0/0/0/0	0/0/0/0
2	SO4	A	6002	-	-	0/0/0/0	0/0/0/0
3	NAD	B	2400	-	-	0/22/62/62	0/5/5/5
4	TDX	B	4500	-	-	0/17/50/50	0/3/3/3
2	SO4	B	6003	-	-	0/0/0/0	0/0/0/0

All (5) bond length outliers are listed below:

Mol	Chain	Res	Type	Atoms	Z	Observed(Å)	Ideal(Å)
3	A	1400	NAD	C4N-C3N	2.29	1.43	1.39

Continued on next page...

Continued from previous page...

Mol	Chain	Res	Type	Atoms	Z	Observed(Å)	Ideal(Å)
3	B	2400	NAD	C2A-N3A	2.91	1.37	1.32
3	A	1400	NAD	C2A-N3A	3.19	1.37	1.32
3	A	1400	NAD	O7N-C7N	5.67	1.36	1.24
3	B	2400	NAD	O7N-C7N	6.22	1.37	1.24

All (16) bond angle outliers are listed below:

Mol	Chain	Res	Type	Atoms	Z	Observed(°)	Ideal(°)
3	B	2400	NAD	N3A-C2A-N1A	-9.01	122.00	128.89
3	A	1400	NAD	N3A-C2A-N1A	-7.33	123.28	128.89
4	B	4500	TDX	C5-C4-N3	-5.62	118.88	125.14
3	B	2400	NAD	O7N-C7N-C3N	-3.80	115.44	119.59
3	A	1400	NAD	O7N-C7N-C3N	-3.76	115.48	119.59
3	B	2400	NAD	O4D-C1D-N1N	-3.59	104.19	108.13
3	A	1400	NAD	C4A-C5A-N7A	-2.51	107.17	109.48
4	B	4500	TDX	O5'-C1'-O1'	-2.50	108.07	111.36
4	A	3500	TDX	C4'-C3'-C2'	-2.26	107.20	111.04
3	A	1400	NAD	O3-PN-O5D	-2.26	96.94	102.94
4	B	4500	TDX	O2A-PA-O3A	2.03	114.30	105.09
3	A	1400	NAD	C2N-C3N-C4N	2.05	120.57	118.29
3	A	1400	NAD	O2N-PN-O1N	2.20	124.44	112.53
3	A	1400	NAD	C3N-C7N-N7N	3.83	122.01	117.82
3	B	2400	NAD	C3N-C7N-N7N	5.85	124.22	117.82
4	B	4500	TDX	C4-N3-C2	6.76	121.09	115.25

There are no chirality outliers.

There are no torsion outliers.

There are no ring outliers.

2 monomers are involved in 2 short contacts:

Mol	Chain	Res	Type	Clashes	Symm-Clashes
3	B	2400	NAD	1	0
4	B	4500	TDX	2	0

5.7 Other polymers ⓘ

There are no such residues in this entry.

5.8 Polymer linkage issues ⓘ

There are no chain breaks in this entry.

6 Fit of model and data ⓘ

6.1 Protein, DNA and RNA chains ⓘ

EDS was not executed - this section will therefore be empty.

6.2 Non-standard residues in protein, DNA, RNA chains ⓘ

EDS was not executed - this section will therefore be empty.

6.3 Carbohydrates ⓘ

EDS was not executed - this section will therefore be empty.

6.4 Ligands ⓘ

EDS was not executed - this section will therefore be empty.

6.5 Other polymers ⓘ

EDS was not executed - this section will therefore be empty.