



Full wwPDB X-ray Structure Validation Report ⓘ

Jan 31, 2016 – 08:29 PM GMT

PDB ID : 1KI2
Title : CRYSTAL STRUCTURE OF THYMIDINE KINASE FROM HERPES SIMPLEX VIRUS TYPE I COMPLEXED WITH GANCICLOVIR
Authors : Champness, J.N.; Bennett, M.S.; Wien, F.; Brown, D.G.; Visse, R.; Sandhu, G.; Davies, A.; Rizkallah, P.J.; Melitz, C.; Summers, W.C.; Sanderson, M.R.
Deposited on : 1998-05-15
Resolution : 2.20 Å(reported)

This is a Full wwPDB X-ray Structure Validation Report for a publicly released PDB entry.
We welcome your comments at validation@mail.wwpdb.org
A user guide is available at
<http://wwpdb.org/validation/2016/XrayValidationReportHelp>
with specific help available everywhere you see the ⓘ symbol.

The following versions of software and data (see [references ⓘ](#)) were used in the production of this report:

MolProbity : 4.02b-467
Mogul : 1.7 (RC4), CSD as536be (2015)
Xtriage (Phenix) : 1.9-1692
EDS : rb-20026688
Percentile statistics : 20151230.v01 (using entries in the PDB archive December 30th 2015)
Refmac : 5.8.0135
CCP4 : 6.5.0
Ideal geometry (proteins) : Engh & Huber (2001)
Ideal geometry (DNA, RNA) : Parkinson et al. (1996)
Validation Pipeline (wwPDB-VP) : trunk26865

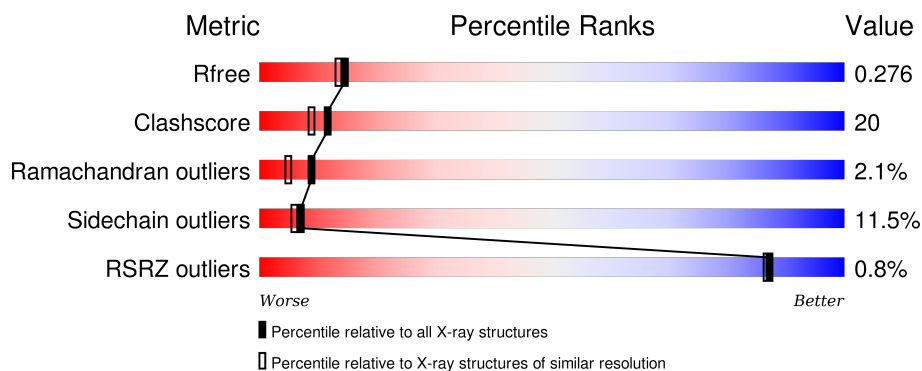
1 Overall quality at a glance

The following experimental techniques were used to determine the structure:

X-RAY DIFFRACTION

The reported resolution of this entry is 2.20 Å.

Percentile scores (ranging between 0-100) for global validation metrics of the entry are shown in the following graphic. The table shows the number of entries on which the scores are based.



Metric	Whole archive (#Entries)	Similar resolution (#Entries, resolution range(Å))
R_{free}	91344	3774 (2.20-2.20)
Clashscore	102246	4477 (2.20-2.20)
Ramachandran outliers	100387	4404 (2.20-2.20)
Sidechain outliers	100360	4405 (2.20-2.20)
RSRZ outliers	91569	3781 (2.20-2.20)

The table below summarises the geometric issues observed across the polymeric chains and their fit to the electron density. The red, orange, yellow and green segments on the lower bar indicate the fraction of residues that contain outliers for ≥ 3 , 2, 1 and 0 types of geometric quality criteria. A grey segment represents the fraction of residues that are not modelled. The numeric value for each fraction is indicated below the corresponding segment, with a dot representing fractions $\leq 5\%$. The upper red bar (where present) indicates the fraction of residues that have poor fit to the electron density. The numeric value is given above the bar.

Mol	Chain	Length	Quality of chain
1	A	331	<div> <div></div> <div>56% 31% 5% • 7%</div> </div>
1	B	331	<div> <div></div> <div>57% 33% 5% 5%</div> </div>

The following table lists non-polymeric compounds, carbohydrate monomers and non-standard residues in protein, DNA, RNA chains that are outliers for geometric or electron-density-fit criteria:

Mol	Type	Chain	Res	Chirality	Geometry	Clashes	Electron density
3	GA2	B	2	-	-	X	-

2 Entry composition [i](#)

There are 4 unique types of molecules in this entry. The entry contains 4975 atoms, of which 0 are hydrogens and 0 are deuteriums.

In the tables below, the ZeroOcc column contains the number of atoms modelled with zero occupancy, the AltConf column contains the number of residues with at least one atom in alternate conformation and the Trace column contains the number of residues modelled with at most 2 atoms.

- Molecule 1 is a protein called THYMIDINE KINASE.

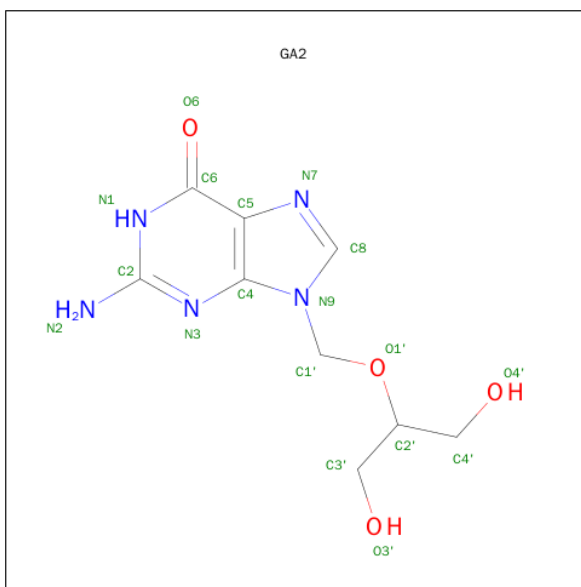
Mol	Chain	Residues	Atoms					ZeroOcc	AltConf	Trace
1	A	308	Total	C	N	O	S	0	0	2
			2340	1490	412	423	15			
1	B	314	Total	C	N	O	S	0	0	2
			2380	1516	419	430	15			

- Molecule 2 is SULFATE ION (three-letter code: SO4) (formula: O₄S).



Mol	Chain	Residues	Atoms			ZeroOcc	AltConf
2	A	1	Total	O	S	0	0
			5	4	1		
2	B	1	Total	O	S	0	0
			5	4	1		

- Molecule 3 is 9-(1,3-DIHYDROXY-PROPOXYMETHANE)GUANINE (three-letter code: GA2) (formula: C₉H₁₃N₅O₄).



Mol	Chain	Residues	Atoms				ZeroOcc	AltConf
3	A	1	Total	C	N	O	0	0
			18	9	5	4		
3	B	1	Total	C	N	O	0	0
			18	9	5	4		

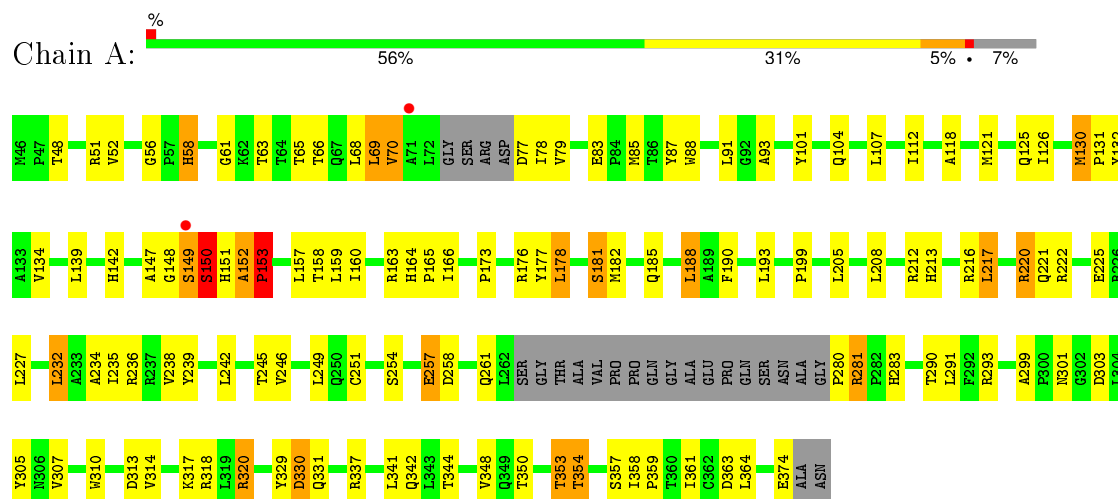
- Molecule 4 is water.

Mol	Chain	Residues	Atoms		ZeroOcc	AltConf
4	A	108	Total	O	0	0
			108	108		
4	B	101	Total	O	0	0
			101	101		

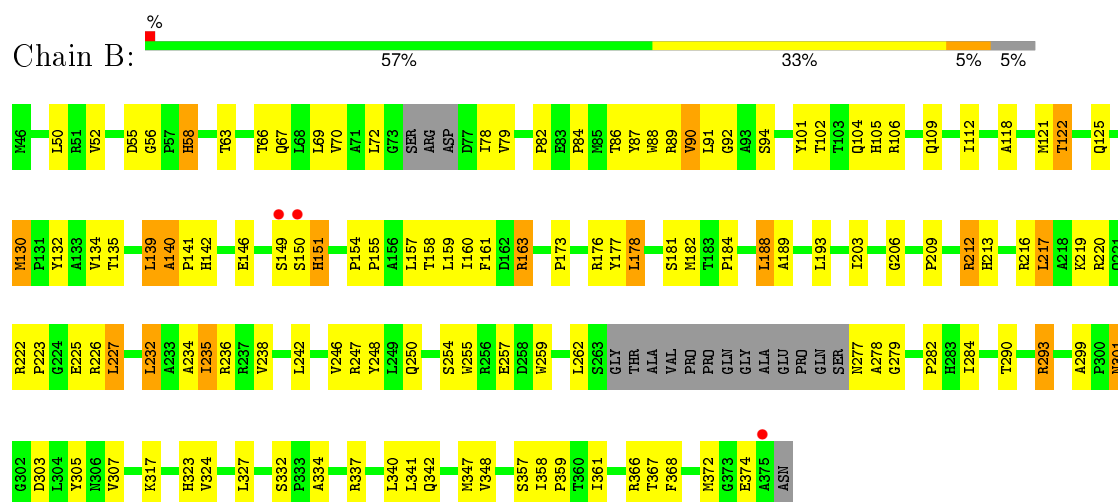
3 Residue-property plots [i](#)

These plots are drawn for all protein, RNA and DNA chains in the entry. The first graphic for a chain summarises the proportions of errors displayed in the second graphic. The second graphic shows the sequence view annotated by issues in geometry and electron density. Residues are color-coded according to the number of geometric quality criteria for which they contain at least one outlier: green = 0, yellow = 1, orange = 2 and red = 3 or more. A red dot above a residue indicates a poor fit to the electron density ($RSRZ > 2$). Stretches of 2 or more consecutive residues without any outlier are shown as a green connector. Residues present in the sample, but not in the model, are shown in grey.

• Molecule 1: THYMIDINE KINASE



• Molecule 1: THYMIDINE KINASE



4 Data and refinement statistics

Property	Value	Source
Space group	C 2 2 21	Depositor
Cell constants a, b, c, α , β , γ	114.90Å 118.70Å 109.10Å 90.00° 90.00° 90.00°	Depositor
Resolution (Å)	12.00 – 2.20 45.51 – 2.20	Depositor EDS
% Data completeness (in resolution range)	74.0 (12.00-2.20) 74.7 (45.51-2.20)	Depositor EDS
R_{merge}	(Not available)	Depositor
R_{sym}	0.61	Depositor
$\langle I/\sigma(I) \rangle$ ¹	1.73 (at 2.20Å)	Xtriage
Refinement program	X-PLOR 3.1	Depositor
R, R_{free}	0.192 , 0.291 0.183 , 0.276	Depositor DCC
R_{free} test set	2795 reflections (10.97%)	DCC
Wilson B-factor (Å ²)	26.2	Xtriage
Anisotropy	0.291	Xtriage
Bulk solvent k_{sol} (e/Å ³), B_{sol} (Å ²)	0.32 , 116.6	EDS
Estimated twinning fraction	0.044 for -k,-h,-l	Xtriage
L-test for twinning ²	$\langle L \rangle = 0.47$, $\langle L^2 \rangle = 0.30$	Xtriage
Outliers	0 of 28515 reflections	Xtriage
F_o, F_c correlation	0.94	EDS
Total number of atoms	4975	wwPDB-VP
Average B, all atoms (Å ²)	25.0	wwPDB-VP

Xtriage's analysis on translational NCS is as follows: *The largest off-origin peak in the Patterson function is 5.40% of the height of the origin peak. No significant pseudotranslation is detected.*

¹Intensities estimated from amplitudes.

²Theoretical values of $\langle |L| \rangle$, $\langle L^2 \rangle$ for acentric reflections are 0.5, 0.375 respectively for untwinned datasets, and 0.333, 0.2 for perfectly twinned datasets.

5 Model quality [i](#)

5.1 Standard geometry [i](#)

Bond lengths and bond angles in the following residue types are not validated in this section: GA2, SO4

The Z score for a bond length (or angle) is the number of standard deviations the observed value is removed from the expected value. A bond length (or angle) with $|Z| > 5$ is considered an outlier worth inspection. RMSZ is the root-mean-square of all Z scores of the bond lengths (or angles).

Mol	Chain	Bond lengths		Bond angles	
		RMSZ	$\# Z > 5$	RMSZ	$\# Z > 5$
1	A	0.63	0/2395	0.78	2/3272 (0.1%)
1	B	0.65	0/2436	0.81	1/3329 (0.0%)
All	All	0.64	0/4831	0.79	3/6601 (0.0%)

There are no bond length outliers.

All (3) bond angle outliers are listed below:

Mol	Chain	Res	Type	Atoms	Z	Observed(°)	Ideal(°)
1	A	107	LEU	CA-CB-CG	5.64	128.27	115.30
1	A	280	PRO	N-CA-CB	5.44	109.83	103.30
1	B	374	GLU	N-CA-C	5.44	125.69	111.00

There are no chirality outliers.

There are no planarity outliers.

5.2 Too-close contacts [i](#)

In the following table, the Non-H and H(model) columns list the number of non-hydrogen atoms and hydrogen atoms in the chain respectively. The H(added) column lists the number of hydrogen atoms added and optimized by MolProbity. The Clashes column lists the number of clashes within the asymmetric unit, whereas Symm-Clashes lists symmetry related clashes.

Mol	Chain	Non-H	H(model)	H(added)	Clashes	Symm-Clashes
1	A	2340	0	2346	87	0
1	B	2380	0	2392	106	0
2	A	5	0	0	0	0
2	B	5	0	0	1	0
3	A	18	0	13	2	0
3	B	18	0	13	7	0

Continued on next page...

Continued from previous page...

Mol	Chain	Non-H	H(model)	H(added)	Clashes	Symm-Clashes
4	A	108	0	0	9	0
4	B	101	0	0	6	0
All	All	4975	0	4764	193	0

The all-atom clashscore is defined as the number of clashes found per 1000 atoms (including hydrogen atoms). The all-atom clashscore for this structure is 20.

All (193) close contacts within the same asymmetric unit are listed below, sorted by their clash magnitude.

Atom-1	Atom-2	Interatomic distance (Å)	Clash overlap (Å)
1:A:232:LEU:O	1:A:236:ARG:HG3	1.71	0.90
1:A:69:LEU:HD13	1:A:341:LEU:HD21	1.62	0.81
1:B:219:LYS:HG3	1:B:220:ARG:H	1.43	0.81
1:B:242:LEU:O	1:B:246:VAL:HG23	1.82	0.79
1:A:78:ILE:HG12	1:A:158:THR:HB	1.65	0.79
1:B:247:ARG:HG3	1:B:277:ASN:HD22	1.48	0.77
1:B:232:LEU:O	1:B:235:ILE:HG22	1.87	0.74
1:A:61:GLY:O	1:A:65:THR:HG23	1.87	0.74
1:A:303:ASP:HA	4:A:635:HOH:O	1.87	0.74
1:B:232:LEU:O	1:B:236:ARG:HG3	1.90	0.72
1:A:69:LEU:CD1	1:A:341:LEU:HD21	2.20	0.72
1:B:66:THR:HG23	1:B:160:ILE:HG21	1.72	0.72
1:B:217:LEU:HD12	1:B:232:LEU:HG	1.70	0.71
1:B:69:LEU:HD11	1:B:341:LEU:HD23	1.73	0.71
1:B:66:THR:O	1:B:70:VAL:HG23	1.92	0.70
1:A:358:ILE:HB	1:A:359:PRO:HD3	1.73	0.70
1:A:152:ALA:HB1	1:A:153:PRO:HD2	1.73	0.69
1:A:149:SER:CB	1:A:348:VAL:HA	2.23	0.69
1:A:149:SER:HB3	1:A:348:VAL:HA	1.75	0.69
1:B:340:LEU:HD11	4:B:515:HOH:O	1.93	0.68
1:B:50:LEU:HD12	1:B:158:THR:HG23	1.75	0.67
1:A:317:LYS:HD3	4:A:655:HOH:O	1.94	0.67
1:A:152:ALA:HB1	1:A:153:PRO:CD	2.24	0.67
1:A:130:MET:HG3	1:B:189:ALA:HA	1.78	0.66
1:B:104:GLN:HB3	4:B:596:HOH:O	1.97	0.65
1:A:63:THR:HA	1:A:66:THR:HG22	1.79	0.64
1:B:87:TYR:HA	1:B:91:LEU:HB2	1.80	0.64
1:B:317:LYS:HE3	4:B:707:HOH:O	1.98	0.63
1:A:58:HIS:CD2	1:A:58:HIS:H	2.16	0.62
1:B:220:ARG:HH11	1:B:220:ARG:HG2	1.66	0.61
1:A:104:GLN:HB2	1:A:176:ARG:HH12	1.65	0.61

Continued on next page...

Continued from previous page...

Atom-1	Atom-2	Interatomic distance (Å)	Clash overlap (Å)
1:A:222:ARG:HG3	3:A:1:GA2:H4'2	1.82	0.61
1:A:52:VAL:HB	1:A:160:ILE:HD13	1.83	0.61
1:B:247:ARG:HG3	1:B:277:ASN:ND2	2.16	0.60
1:B:86:THR:HB	1:B:372:MET:HA	1.84	0.60
1:B:118:ALA:HA	1:B:181:SER:O	2.02	0.60
1:B:67:GLN:HA	1:B:67:GLN:OE1	2.01	0.60
1:A:337:ARG:O	1:A:341:LEU:HD23	2.01	0.60
1:A:118:ALA:HA	1:A:181:SER:O	2.02	0.60
1:A:121:MET:O	1:A:125:GLN:HG2	2.02	0.60
1:B:222:ARG:HG2	3:B:2:GA2:H3'1	1.84	0.60
1:B:225:GLU:HG2	1:B:226:ARG:N	2.17	0.60
1:B:212:ARG:NH1	1:B:216:ARG:HD2	2.17	0.59
1:B:142:HIS:HD2	1:B:357:SER:OG	1.86	0.59
1:B:121:MET:O	1:B:125:GLN:HG2	2.03	0.59
3:B:2:GA2:O4'	3:B:2:GA2:C1'	2.51	0.58
1:A:87:TYR:HA	1:A:91:LEU:HB2	1.85	0.58
1:A:217:LEU:HD12	1:A:232:LEU:HG	1.86	0.58
1:B:209:PRO:HD3	4:B:561:HOH:O	2.03	0.57
1:B:358:ILE:HB	1:B:359:PRO:HD3	1.87	0.57
1:B:212:ARG:HG3	1:B:212:ARG:HH11	1.69	0.56
1:A:320:ARG:HG2	1:A:320:ARG:HH11	1.70	0.56
1:A:159:LEU:HD11	1:A:361:ILE:HG21	1.86	0.56
1:A:216:ARG:O	1:A:220:ARG:HD2	2.05	0.56
1:B:248:TYR:HB2	1:B:282:PRO:HG2	1.88	0.56
1:B:139:LEU:HD21	1:B:161:PHE:HZ	1.71	0.56
1:B:255:TRP:O	1:B:259:TRP:N	2.39	0.56
1:B:121:MET:HG3	1:B:181:SER:HB2	1.89	0.55
1:B:222:ARG:NH1	3:B:2:GA2:H4'2	2.21	0.55
1:A:63:THR:O	1:A:66:THR:HG22	2.06	0.55
1:B:222:ARG:HG2	3:B:2:GA2:C3'	2.37	0.55
1:A:208:LEU:O	1:A:236:ARG:NH2	2.40	0.55
1:A:77:ASP:O	1:A:158:THR:N	2.39	0.54
1:B:52:VAL:HG11	4:B:515:HOH:O	2.07	0.54
1:A:242:LEU:O	1:A:246:VAL:HG23	2.07	0.54
1:B:234:ALA:O	1:B:238:VAL:HG23	2.08	0.54
1:A:132:TYR:HB3	1:A:165:PRO:HG3	1.89	0.54
1:B:58:HIS:CD2	1:B:58:HIS:H	2.25	0.54
1:B:146:GLU:OE2	1:B:348:VAL:HG11	2.08	0.54
1:B:217:LEU:HD13	1:B:227:LEU:CD1	2.38	0.54
1:A:234:ALA:O	1:A:238:VAL:HG23	2.08	0.54
1:B:262:LEU:CD2	1:B:290:THR:HA	2.38	0.53

Continued on next page...

Continued from previous page...

Atom-1	Atom-2	Interatomic distance (Å)	Clash overlap (Å)
1:A:153:PRO:HD2	4:A:706:HOH:O	2.07	0.53
1:B:58:HIS:HE1	4:B:503:HOH:O	1.91	0.53
1:B:140:ALA:HB3	1:B:141:PRO:HD3	1.90	0.53
1:A:213:HIS:O	1:A:217:LEU:HB2	2.09	0.53
1:B:301:ASN:OD1	1:B:303:ASP:HB2	2.07	0.53
1:B:69:LEU:CD1	1:B:341:LEU:HD23	2.37	0.53
1:A:101:TYR:CZ	1:A:225:GLU:HG3	2.44	0.53
1:B:177:TYR:CE1	1:B:184:PRO:HD3	2.44	0.53
1:B:212:ARG:HD2	1:B:212:ARG:O	2.09	0.52
1:A:88:TRP:HZ2	1:A:132:TYR:HH	1.58	0.52
1:A:56:GLY:O	1:A:163:ARG:NH2	2.42	0.52
1:B:262:LEU:HD21	1:B:290:THR:HA	1.92	0.52
1:B:334:ALA:O	1:B:337:ARG:HB3	2.10	0.52
1:B:56:GLY:O	1:B:163:ARG:NH2	2.43	0.52
1:A:164:HIS:ND1	1:A:166:ILE:HG12	2.24	0.51
1:A:344:THR:HG22	4:A:525:HOH:O	2.10	0.51
1:B:86:THR:O	1:B:90:VAL:HG13	2.10	0.51
1:B:225:GLU:HG2	1:B:226:ARG:H	1.75	0.51
1:B:327:LEU:CD2	1:B:340:LEU:HB2	2.41	0.51
1:B:84:PRO:HA	1:B:372:MET:HB3	1.93	0.51
1:B:87:TYR:CZ	1:B:130:MET:HG2	2.46	0.51
1:B:102:THR:O	1:B:106:ARG:HG3	2.11	0.51
1:B:149:SER:O	1:B:151:HIS:N	2.45	0.50
1:B:327:LEU:HD22	1:B:340:LEU:HB2	1.93	0.50
1:A:139:LEU:HD13	1:A:364:LEU:HD13	1.93	0.50
1:A:357:SER:O	1:A:361:ILE:HG13	2.10	0.50
1:A:293:ARG:NH2	4:A:513:HOH:O	2.43	0.50
1:B:216:ARG:HG3	1:B:219:LYS:HE3	1.93	0.50
1:B:101:TYR:CZ	1:B:225:GLU:HG3	2.47	0.50
1:A:58:HIS:H	1:A:58:HIS:HD2	1.58	0.49
1:B:121:MET:HB3	1:B:182:MET:HE2	1.94	0.49
1:A:329:TYR:O	1:A:331:GLN:N	2.45	0.49
1:A:85:MET:HB3	1:A:374:GLU:HB3	1.94	0.49
1:B:79:VAL:CG2	1:B:157:LEU:HD11	2.42	0.49
1:B:139:LEU:HD21	1:B:161:PHE:CZ	2.47	0.49
1:B:299:ALA:HA	1:B:305:TYR:CZ	2.48	0.48
1:A:314:VAL:O	1:A:318:ARG:HG2	2.13	0.48
1:B:254:SER:HB3	1:B:257:GLU:HB3	1.94	0.48
1:B:135:THR:HG22	1:B:139:LEU:HD22	1.94	0.48
1:B:125:GLN:HE22	3:B:2:GA2:HN1	1.62	0.48
1:B:255:TRP:HA	1:B:284:ILE:HD12	1.95	0.48

Continued on next page...

Continued from previous page...

Atom-1	Atom-2	Interatomic distance (Å)	Clash overlap (Å)
1:B:84:PRO:HA	1:B:372:MET:O	2.14	0.48
1:A:58:HIS:HE1	1:A:101:TYR:OH	1.97	0.48
1:B:259:TRP:CZ2	1:B:293:ARG:HG2	2.48	0.48
1:A:293:ARG:NH1	4:A:594:HOH:O	2.45	0.48
1:A:310:TRP:O	1:A:313:ASP:HB2	2.13	0.47
1:A:48:THR:HA	1:A:350:THR:O	2.14	0.47
1:A:149:SER:HB2	1:A:348:VAL:HA	1.97	0.47
1:B:246:VAL:O	1:B:250:GLN:HG3	2.14	0.47
1:B:118:ALA:O	1:B:122:THR:HG23	2.14	0.47
1:B:341:LEU:O	1:B:341:LEU:HD13	2.15	0.47
3:B:2:GA2:H1'2	3:B:2:GA2:O4'	2.16	0.46
1:B:327:LEU:HD22	1:B:340:LEU:HD13	1.98	0.46
1:B:101:TYR:OH	3:B:2:GA2:H8	2.15	0.46
1:A:104:GLN:HB2	1:A:176:ARG:NH1	2.29	0.46
1:A:164:HIS:CD2	1:A:165:PRO:HD2	2.51	0.46
1:A:63:THR:CA	1:A:66:THR:HG22	2.45	0.46
1:A:85:MET:HE1	1:A:222:ARG:HD2	1.96	0.46
1:A:330:ASP:O	1:A:331:GLN:HB3	2.15	0.46
1:A:150:SER:O	1:A:151:HIS:HB3	2.17	0.45
1:B:118:ALA:O	1:B:122:THR:CG2	2.65	0.45
1:B:63:THR:HG23	2:B:4:SO4:O1	2.16	0.45
1:A:185:GLN:N	1:A:185:GLN:OE1	2.45	0.45
1:B:149:SER:HB3	1:B:347:MET:O	2.17	0.45
1:A:213:HIS:CE1	1:A:232:LEU:HD21	2.51	0.45
1:A:130:MET:HB3	1:A:131:PRO:HD3	1.98	0.45
1:A:261:GLN:OE1	1:A:283:HIS:NE2	2.33	0.45
1:B:78:ILE:N	1:B:78:ILE:HD12	2.31	0.45
1:A:178:LEU:HD12	1:A:178:LEU:HA	1.87	0.45
1:A:79:VAL:HG23	1:A:157:LEU:HD11	1.98	0.44
1:B:159:LEU:HD11	1:B:361:ILE:CG2	2.47	0.44
1:B:112:ILE:HD13	1:B:112:ILE:HA	1.79	0.44
1:B:222:ARG:HD3	1:B:223:PRO:HD2	1.98	0.44
1:B:87:TYR:CE1	1:B:92:GLY:HA3	2.53	0.43
1:A:142:HIS:CE1	4:A:522:HOH:O	2.71	0.43
1:B:58:HIS:CD2	1:B:58:HIS:N	2.86	0.43
1:B:216:ARG:O	1:B:219:LYS:HG2	2.18	0.43
1:B:178:LEU:HA	1:B:178:LEU:HD12	1.86	0.43
1:A:254:SER:HB3	1:A:257:GLU:HB2	2.01	0.43
1:A:299:ALA:HA	1:A:305:TYR:CZ	2.53	0.43
1:A:232:LEU:O	1:A:235:ILE:HG22	2.19	0.43
1:B:102:THR:O	1:B:105:HIS:HB3	2.19	0.43

Continued on next page...

Continued from previous page...

Atom-1	Atom-2	Interatomic distance (Å)	Clash overlap (Å)
1:A:342:GLN:HA	1:A:342:GLN:OE1	2.18	0.43
1:B:277:ASN:O	1:B:279:GLY:N	2.40	0.43
1:A:353:THR:O	1:A:354:THR:HG23	2.19	0.43
1:A:147:ALA:O	1:A:149:SER:N	2.51	0.43
1:B:188:LEU:HA	1:B:188:LEU:HD12	1.74	0.43
1:A:245:THR:O	1:A:249:LEU:HG	2.19	0.42
1:A:83:GLU:HG3	4:A:521:HOH:O	2.18	0.42
1:B:235:ILE:HA	1:B:235:ILE:HD12	1.86	0.42
1:A:104:GLN:HG2	4:A:614:HOH:O	2.19	0.42
1:B:213:HIS:O	1:B:213:HIS:HD2	2.03	0.42
1:B:219:LYS:HG3	1:B:220:ARG:N	2.22	0.42
1:A:251:CYS:CB	1:A:281:ARG:HB3	2.49	0.42
1:A:51:ARG:NH2	1:A:199:PRO:O	2.52	0.42
1:B:79:VAL:HG21	1:B:157:LEU:HD11	2.01	0.42
1:A:152:ALA:CB	1:A:153:PRO:CD	2.97	0.42
1:A:176:ARG:HD3	1:A:176:ARG:HA	1.74	0.42
1:B:72:LEU:HD21	1:B:337:ARG:HD3	2.02	0.42
1:B:217:LEU:HD13	1:B:227:LEU:HD12	2.01	0.42
1:B:246:VAL:HG21	1:B:324:VAL:HG21	2.01	0.41
1:B:219:LYS:CG	1:B:220:ARG:H	2.25	0.41
1:B:101:TYR:CE2	1:B:225:GLU:HG3	2.56	0.41
1:B:342:GLN:NE2	1:B:342:GLN:HA	2.35	0.41
1:A:69:LEU:O	1:A:69:LEU:HD12	2.20	0.41
1:A:193:LEU:HD13	1:B:193:LEU:HD13	2.03	0.41
1:B:88:TRP:HZ2	1:B:132:TYR:HH	1.67	0.41
1:B:90:VAL:HG22	1:B:91:LEU:N	2.36	0.41
1:A:58:HIS:CD2	1:A:58:HIS:N	2.84	0.41
1:A:188:LEU:HA	1:A:188:LEU:HD12	1.81	0.41
1:A:173:PRO:HA	1:A:182:MET:CE	2.51	0.41
1:B:323:HIS:CE1	1:B:348:VAL:HG21	2.56	0.40
1:B:154:PRO:HA	1:B:155:PRO:HD2	1.91	0.40
1:A:341:LEU:HA	1:A:341:LEU:HD13	1.93	0.40
1:A:222:ARG:CG	3:A:1:GA2:H4'2	2.49	0.40
1:B:213:HIS:CE1	1:B:232:LEU:HD21	2.56	0.40
1:B:206:GLY:HA2	1:B:327:LEU:O	2.21	0.40
1:A:354:THR:O	1:A:357:SER:HB2	2.20	0.40
1:A:126:ILE:HD13	1:A:190:PHE:HE1	1.86	0.40
1:B:121:MET:HE1	1:B:176:ARG:CZ	2.52	0.40
1:A:205:LEU:HD22	1:A:239:TYR:CD1	2.56	0.40

There are no symmetry-related clashes.

5.3 Torsion angles

5.3.1 Protein backbone

In the following table, the Percentiles column shows the percent Ramachandran outliers of the chain as a percentile score with respect to all X-ray entries followed by that with respect to entries of similar resolution.

The Analysed column shows the number of residues for which the backbone conformation was analysed, and the total number of residues.

Mol	Chain	Analysed	Favoured	Allowed	Outliers	Percentiles	
1	A	302/331 (91%)	273 (90%)	21 (7%)	8 (3%)	7	3
1	B	308/331 (93%)	276 (90%)	27 (9%)	5 (2%)	12	8
All	All	610/662 (92%)	549 (90%)	48 (8%)	13 (2%)	9	5

All (13) Ramachandran outliers are listed below:

Mol	Chain	Res	Type
1	B	150	SER
1	A	150	SER
1	A	152	ALA
1	A	330	ASP
1	B	227	LEU
1	B	278	ALA
1	A	93	ALA
1	A	148	GLY
1	A	149	SER
1	A	70	VAL
1	B	82	PRO
1	A	153	PRO
1	B	140	ALA

5.3.2 Protein sidechains

In the following table, the Percentiles column shows the percent sidechain outliers of the chain as a percentile score with respect to all X-ray entries followed by that with respect to entries of similar resolution.

The Analysed column shows the number of residues for which the sidechain conformation was analysed, and the total number of residues.

Mol	Chain	Analysed	Rotameric	Outliers	Percentiles	
1	A	245/264 (93%)	215 (88%)	30 (12%)	6	5

Continued on next page...

Continued from previous page...

Mol	Chain	Analysed	Rotameric	Outliers	Percentiles	
1	B	249/264 (94%)	222 (89%)	27 (11%)	8	7
All	All	494/528 (94%)	437 (88%)	57 (12%)	7	6

All (57) residues with a non-rotameric sidechain are listed below:

Mol	Chain	Res	Type
1	A	58	HIS
1	A	68	LEU
1	A	69	LEU
1	A	70	VAL
1	A	112	ILE
1	A	130	MET
1	A	134	VAL
1	A	150	SER
1	A	153	PRO
1	A	177	TYR
1	A	178	LEU
1	A	181	SER
1	A	188	LEU
1	A	212	ARG
1	A	217	LEU
1	A	220	ARG
1	A	221	GLN
1	A	227	LEU
1	A	232	LEU
1	A	257	GLU
1	A	258	ASP
1	A	281	ARG
1	A	290	THR
1	A	291	LEU
1	A	301	ASN
1	A	307	VAL
1	A	320	ARG
1	A	353	THR
1	A	354	THR
1	A	363	ASP
1	B	55	ASP
1	B	58	HIS
1	B	89	ARG
1	B	90	VAL
1	B	94	SER
1	B	109	GLN

Continued on next page...

Continued from previous page...

Mol	Chain	Res	Type
1	B	122	THR
1	B	130	MET
1	B	134	VAL
1	B	139	LEU
1	B	151	HIS
1	B	163	ARG
1	B	173	PRO
1	B	178	LEU
1	B	188	LEU
1	B	203	ILE
1	B	212	ARG
1	B	217	LEU
1	B	232	LEU
1	B	235	ILE
1	B	293	ARG
1	B	301	ASN
1	B	307	VAL
1	B	332	SER
1	B	366	ARG
1	B	367	THR
1	B	368	PHE

Some sidechains can be flipped to improve hydrogen bonding and reduce clashes. All (8) such sidechains are listed below:

Mol	Chain	Res	Type
1	A	58	HIS
1	A	99	ASN
1	A	331	GLN
1	B	58	HIS
1	B	142	HIS
1	B	277	ASN
1	B	323	HIS
1	B	342	GLN

5.3.3 RNA ⓘ

There are no RNA molecules in this entry.

5.4 Non-standard residues in protein, DNA, RNA chains ⓘ

There are no non-standard protein/DNA/RNA residues in this entry.

5.5 Carbohydrates ⓘ

There are no carbohydrates in this entry.

5.6 Ligand geometry ⓘ

4 ligands are modelled in this entry.

In the following table, the Counts columns list the number of bonds (or angles) for which Mogul statistics could be retrieved, the number of bonds (or angles) that are observed in the model and the number of bonds (or angles) that are defined in the chemical component dictionary. The Link column lists molecule types, if any, to which the group is linked. The Z score for a bond length (or angle) is the number of standard deviations the observed value is removed from the expected value. A bond length (or angle) with $|Z| > 2$ is considered an outlier worth inspection. RMSZ is the root-mean-square of all Z scores of the bond lengths (or angles).

Mol	Type	Chain	Res	Link	Bond lengths			Bond angles		
					Counts	RMSZ	# $ Z > 2$	Counts	RMSZ	# $ Z > 2$
3	GA2	A	1	-	15,19,19	1.41	2 (13%)	12,26,26	3.56	5 (41%)
2	SO4	A	3	-	4,4,4	1.69	1 (25%)	6,6,6	0.45	0
3	GA2	B	2	-	15,19,19	2.56	4 (26%)	12,26,26	4.17	6 (50%)
2	SO4	B	4	-	4,4,4	1.96	1 (25%)	6,6,6	0.27	0

In the following table, the Chirals column lists the number of chiral outliers, the number of chiral centers analysed, the number of these observed in the model and the number defined in the chemical component dictionary. Similar counts are reported in the Torsion and Rings columns. '-' means no outliers of that kind were identified.

Mol	Type	Chain	Res	Link	Chirals	Torsions	Rings
3	GA2	A	1	-	-	0/7/9/9	0/2/2/2
2	SO4	A	3	-	-	0/0/0/0	0/0/0/0
3	GA2	B	2	-	-	0/7/9/9	0/2/2/2
2	SO4	B	4	-	-	0/0/0/0	0/0/0/0

All (8) bond length outliers are listed below:

Mol	Chain	Res	Type	Atoms	Z	Observed(Å)	Ideal(Å)
3	A	1	GA2	C8-N7	-3.08	1.28	1.34
2	B	4	SO4	O3-S	-2.65	1.37	1.47

Continued on next page...

Continued from previous page...

Mol	Chain	Res	Type	Atoms	Z	Observed(Å)	Ideal(Å)
2	A	3	SO4	O2-S	-2.45	1.38	1.47
3	A	1	GA2	C6-N1	2.24	1.37	1.33
3	B	2	GA2	C6-C5	2.94	1.47	1.41
3	B	2	GA2	C3'-C2'	3.67	1.60	1.50
3	B	2	GA2	C2-N1	3.89	1.42	1.35
3	B	2	GA2	C6-N1	7.40	1.46	1.33

All (11) bond angle outliers are listed below:

Mol	Chain	Res	Type	Atoms	Z	Observed(°)	Ideal(°)
3	B	2	GA2	C5-C6-N1	-10.98	108.58	123.59
3	A	1	GA2	C5-C6-N1	-8.14	112.46	123.59
3	B	2	GA2	N2-C2-N3	-2.80	112.43	117.80
3	A	1	GA2	N3-C2-N1	-2.28	123.98	127.44
3	B	2	GA2	N3-C2-N1	-2.15	124.17	127.44
3	A	1	GA2	O1'-C2'-C3'	2.99	118.95	109.25
3	B	2	GA2	C1'-N9-C8	3.66	133.56	125.88
3	B	2	GA2	N2-C2-N1	3.75	123.40	117.20
3	A	1	GA2	C1'-N9-C8	3.75	133.74	125.88
3	B	2	GA2	C6-N1-C2	6.31	124.69	115.94
3	A	1	GA2	C6-N1-C2	6.68	125.22	115.94

There are no chirality outliers.

There are no torsion outliers.

There are no ring outliers.

3 monomers are involved in 10 short contacts:

Mol	Chain	Res	Type	Clashes	Symm-Clashes
3	A	1	GA2	2	0
3	B	2	GA2	7	0
2	B	4	SO4	1	0

5.7 Other polymers [i](#)

There are no such residues in this entry.

5.8 Polymer linkage issues [i](#)

There are no chain breaks in this entry.

6 Fit of model and data [i](#)

6.1 Protein, DNA and RNA chains [i](#)

In the following table, the column labelled ‘#RSRZ> 2’ contains the number (and percentage) of RSRZ outliers, followed by percent RSRZ outliers for the chain as percentile scores relative to all X-ray entries and entries of similar resolution. The OWAB column contains the minimum, median, 95th percentile and maximum values of the occupancy-weighted average B-factor per residue. The column labelled ‘Q< 0.9’ lists the number of (and percentage) of residues with an average occupancy less than 0.9.

Mol	Chain	Analysed	<RSRZ>	#RSRZ>2	OWAB(Å ²)	Q<0.9
1	A	308/331 (93%)	-0.47	2 (0%) 90 90	11, 23, 41, 63	0
1	B	314/331 (94%)	-0.47	3 (0%) 84 83	8, 23, 47, 62	0
All	All	622/662 (93%)	-0.47	5 (0%) 87 87	8, 23, 43, 63	0

All (5) RSRZ outliers are listed below:

Mol	Chain	Res	Type	RSRZ
1	A	149	SER	2.9
1	B	149	SER	2.5
1	B	150	SER	2.5
1	A	71	ALA	2.4
1	B	375	ALA	2.4

6.2 Non-standard residues in protein, DNA, RNA chains [i](#)

There are no non-standard protein/DNA/RNA residues in this entry.

6.3 Carbohydrates [i](#)

There are no carbohydrates in this entry.

6.4 Ligands [i](#)

In the following table, the Atoms column lists the number of modelled atoms in the group and the number defined in the chemical component dictionary. LLDF column lists the quality of electron density of the group with respect to its neighbouring residues in protein, DNA or RNA chains. The B-factors column lists the minimum, median, 95th percentile and maximum values of B factors of atoms in the group. The column labelled ‘Q< 0.9’ lists the number of atoms with occupancy less than 0.9.

Mol	Type	Chain	Res	Atoms	RSCC	RSR	LLDF	B-factors(\AA^2)	Q<0.9
3	GA2	A	1	18/18	0.91	0.15	1.56	25,30,34,36	0
3	GA2	B	2	18/18	0.90	0.14	1.20	23,32,35,36	0
2	SO4	B	4	5/5	0.99	0.08	-0.64	29,32,33,33	0
2	SO4	A	3	5/5	0.99	0.07	-1.30	26,27,27,27	0

6.5 Other polymers [i](#)

There are no such residues in this entry.