



# wwPDB X-ray Structure Validation Summary Report ⓘ

Jan 31, 2016 – 08:30 PM GMT

PDB ID : 1KMN  
Title : HISTIDYL-TRNA SYNTHETASE COMPLEXED WITH HISTIDINOL AND ATP  
Authors : Arnez, J.G.; Francklyn, C.S.; Moras, D.  
Deposited on : 1997-05-09  
Resolution : 2.80 Å(reported)

This is a wwPDB X-ray Structure Validation Summary Report for a publicly released PDB entry.  
We welcome your comments at [validation@mail.wwpdb.org](mailto:validation@mail.wwpdb.org)  
A user guide is available at  
<http://wwpdb.org/validation/2016/XrayValidationReportHelp>  
with specific help available everywhere you see the ⓘ symbol.

---

The following versions of software and data (see [references ⓘ](#)) were used in the production of this report:

MolProbity : 4.02b-467  
Mogul : 1.7 (RC4), CSD as536be (2015)  
Xtriage (Phenix) : 1.9-1692  
EDS : rb-20026688  
Percentile statistics : 20151230.v01 (using entries in the PDB archive December 30th 2015)  
Refmac : 5.8.0135  
CCP4 : 6.5.0  
Ideal geometry (proteins) : Engh & Huber (2001)  
Ideal geometry (DNA, RNA) : Parkinson et al. (1996)  
Validation Pipeline (wwPDB-VP) : trunk26865

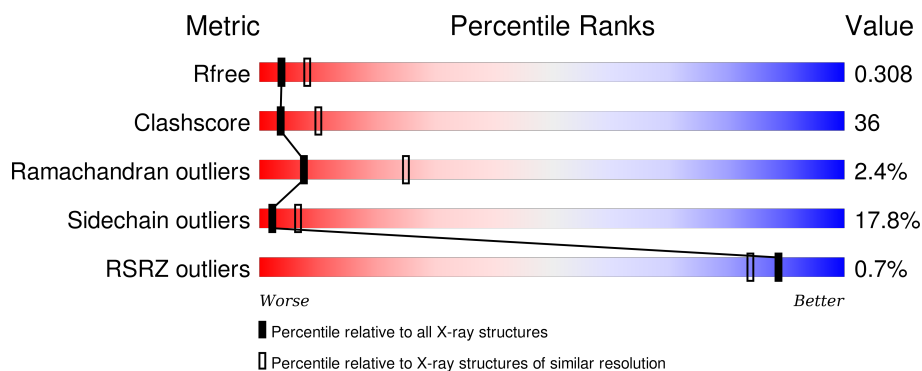
# 1 Overall quality at a glance ⓘ

The following experimental techniques were used to determine the structure:

## *X-RAY DIFFRACTION*

The reported resolution of this entry is 2.80 Å.

Percentile scores (ranging between 0-100) for global validation metrics of the entry are shown in the following graphic. The table shows the number of entries on which the scores are based.



Metric	Whole archive (#Entries)	Similar resolution (#Entries, resolution range(Å))
$R_{free}$	91344	2393 (2.80-2.80)
Clashscore	102246	2827 (2.80-2.80)
Ramachandran outliers	100387	2782 (2.80-2.80)
Sidechain outliers	100360	2784 (2.80-2.80)
RSRZ outliers	91569	2404 (2.80-2.80)

The table below summarises the geometric issues observed across the polymeric chains and their fit to the electron density. The red, orange, yellow and green segments on the lower bar indicate the fraction of residues that contain outliers for  $\geq 3$ , 2, 1 and 0 types of geometric quality criteria. A grey segment represents the fraction of residues that are not modelled. The numeric value for each fraction is indicated below the corresponding segment, with a dot representing fractions  $\leq 5\%$ . The upper red bar (where present) indicates the fraction of residues that have poor fit to the electron density. The numeric value is given above the bar.

Mol	Chain	Length	Quality of chain
1	A	424	<div> <div>36%</div> <div>45%</div> <div>7%</div> <div>11%</div> </div>
1	B	424	<div> <div>37%</div> <div>39%</div> <div>9%</div> <div>14%</div> </div>
1	C	424	<div> <div>42%</div> <div>41%</div> <div>9%</div> <div>9%</div> </div>
1	D	424	<div> <div>39%</div> <div>38%</div> <div>8%</div> <div>14%</div> </div>

The following table lists non-polymeric compounds, carbohydrate monomers and non-standard residues in protein, DNA, RNA chains that are outliers for geometric or electron-density-fit crite-

ria:

Mol	Type	Chain	Res	Chirality	Geometry	Clashes	Electron density
3	ATP	B	452	-	-	X	-
3	ATP	D	452	-	-	X	-

## 2 Entry composition [i](#)

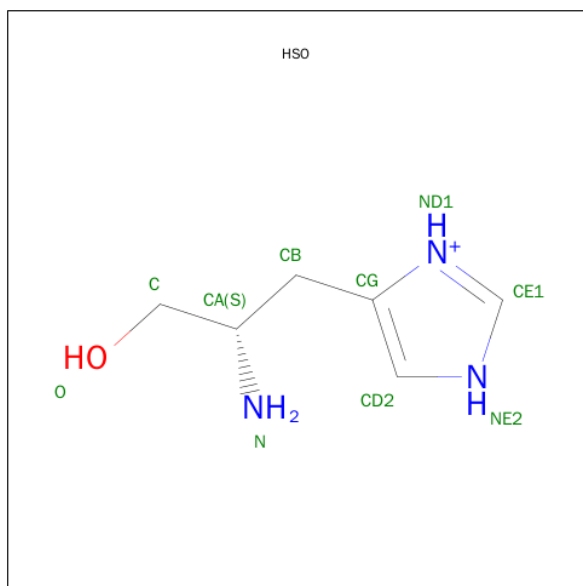
There are 4 unique types of molecules in this entry. The entry contains 14397 atoms, of which 2666 are hydrogens and 0 are deuteriums.

In the tables below, the ZeroOcc column contains the number of atoms modelled with zero occupancy, the AltConf column contains the number of residues with at least one atom in alternate conformation and the Trace column contains the number of residues modelled with at most 2 atoms.

- Molecule 1 is a protein called HISTIDYL-TRNA SYNTHETASE.

Mol	Chain	Residues	Atoms						ZeroOcc	AltConf	Trace
1	A	379	Total	C	H	N	O	S	0	0	0
			3612	1848	674	528	551	11			
1	B	364	Total	C	H	N	O	S	0	0	0
			3455	1768	643	505	528	11			
1	C	387	Total	C	H	N	O	S	0	0	0
			3666	1876	682	536	561	11			
1	D	364	Total	C	H	N	O	S	0	0	0
			3452	1765	643	505	528	11			

- Molecule 2 is L-HISTIDINOL (three-letter code: HSO) (formula: C<sub>6</sub>H<sub>12</sub>N<sub>3</sub>O).



Mol	Chain	Residues	Atoms					ZeroOcc	AltConf
2	A	1	Total	C	H	N	O	0	0
			13	6	3	3	1		
2	B	1	Total	C	H	N	O	0	0
			13	6	3	3	1		

*Continued on next page...*

Mol	Chain	Residues	Atoms					ZeroOcc	AltConf
2	C	1	Total 13	C 6	H 3	N 3	O 1	0	0
2	D	1	Total 13	C 6	H 3	N 3	O 1	0	0

- 
- The diagram illustrates the chemical structure of Adenosine Triphosphate (ATP). It consists of an adenine base (a purine ring system) connected to a ribose sugar, which is in turn connected to a chain of three phosphate groups. The atoms are labeled with IDs: N1, N2, N3, N7, C2, C4, C6, C8, N9, O3', O4', C5', C3', C2', C1', O5', O3A, O1A, O3B, O1B, O2B, O3C, O1C, O2C, O3G, O1G. The bonds are color-coded: blue for aromatic bonds, red for hydroxyl bonds, and pink for phosphate bonds. The structure is shown in a 3D perspective with wedged and dashed bonds to indicate stereochemistry.

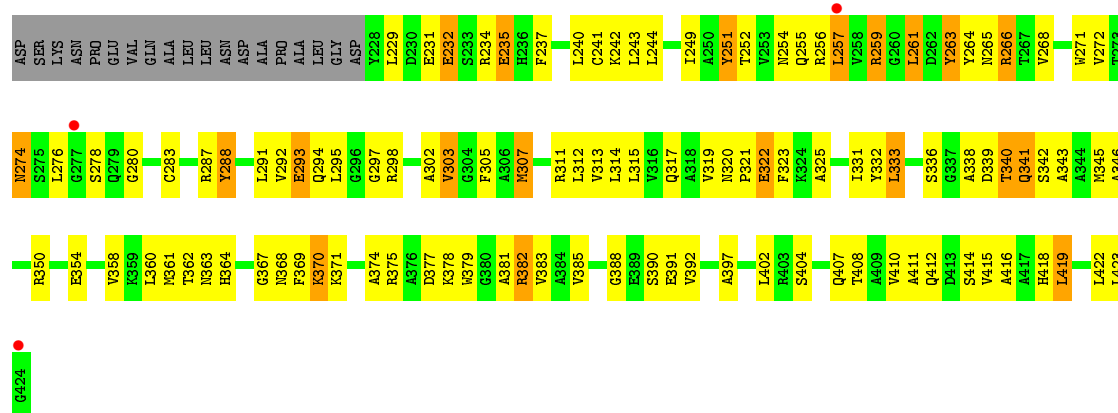
Mol	Chain	Residues	Atoms	ZeroOcc	AltConf
4	A	13	Total O 13 13	0	0
4	B	5	Total O 5 5	0	0
4	C	4	Total O 4 4	0	0

WORLDWIDE  
**PDB**  
PROTEIN DATA BANK

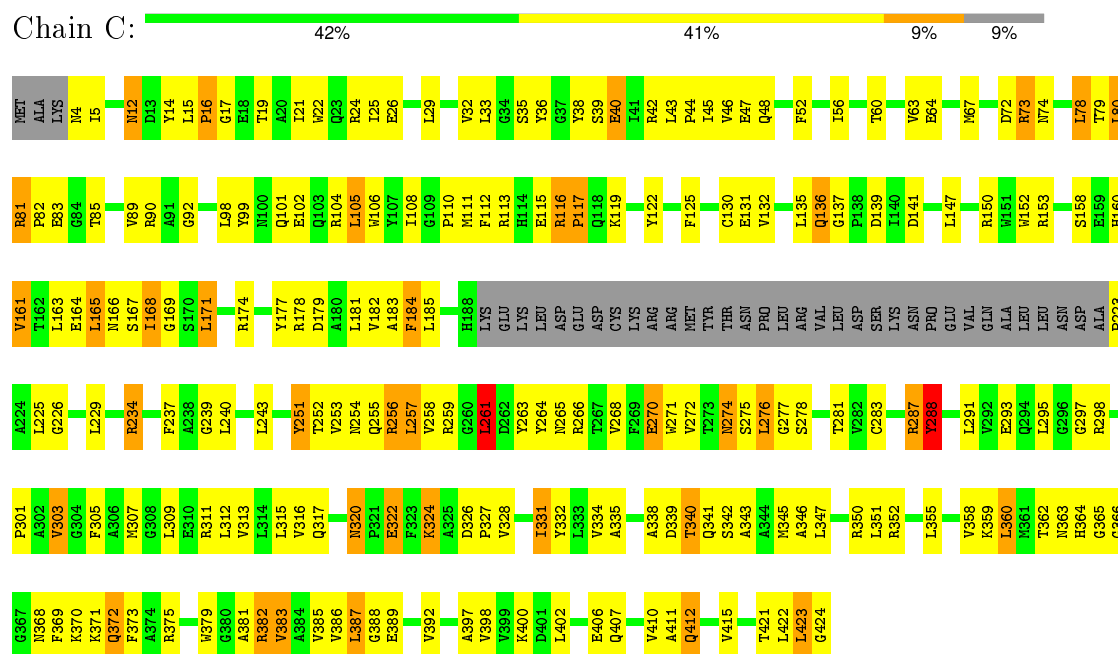
*Continued from previous page...*

Mol	Chain	Residues	Atoms		ZeroOcc	AltConf
4	D	2	Total	O	0	0
			2	2		

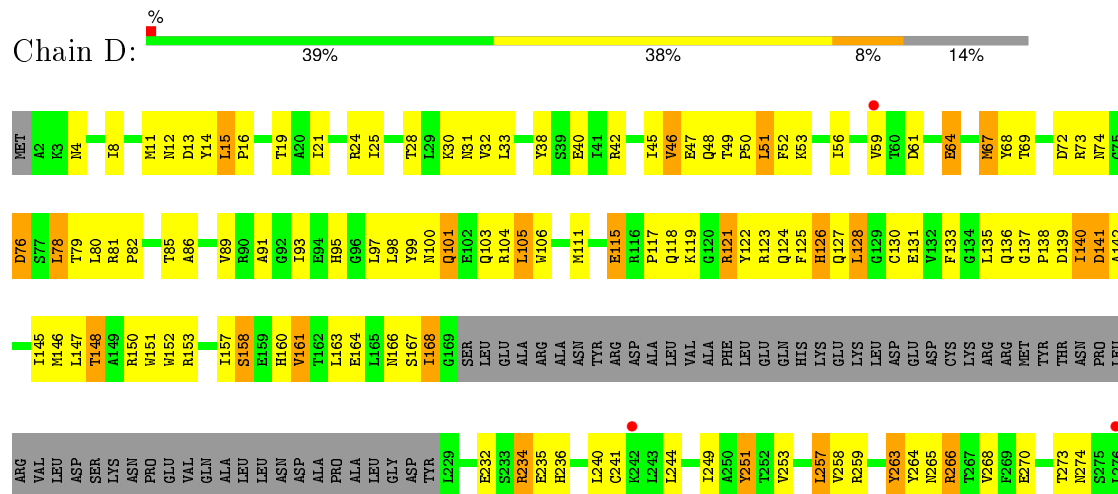




### • Molecule 1: HISTIDYL-TRNA SYNTHETASE



### • Molecule 1: HISTIDYL-TRNA SYNTHETASE







## 4 Data and refinement statistics

Property	Value	Source
Space group	P 1	Depositor
Cell constants a, b, c, $\alpha$ , $\beta$ , $\gamma$	60.90Å 107.30Å 107.20Å 114.10° 97.40° 90.00°	Depositor
Resolution (Å)	13.00 – 2.80 13.94 – 2.60	Depositor EDS
% Data completeness (in resolution range)	64.0 (13.00-2.80) 60.5 (13.94-2.60)	Depositor EDS
$R_{merge}$	0.04	Depositor
$R_{sym}$	(Not available)	Depositor
$\langle I/\sigma(I) \rangle$ <sup>1</sup>	6.60 (at 2.61Å)	Xtriage
Refinement program	X-PLOR	Depositor
R, $R_{free}$	0.249 , 0.348 0.264 , 0.308	Depositor DCC
$R_{free}$ test set	1301 reflections (2.60%)	DCC
Wilson B-factor (Å <sup>2</sup> )	26.0	Xtriage
Anisotropy	0.462	Xtriage
Bulk solvent $k_{sol}$ (e/Å <sup>3</sup> ), $B_{sol}$ (Å <sup>2</sup> )	0.21 , 12.2	EDS
Estimated twinning fraction	No twinning to report.	Xtriage
L-test for twinning <sup>2</sup>	$\langle  L  \rangle = 0.37$ , $\langle L^2 \rangle = 0.19$	Xtriage
Outliers	0 of 63496 reflections	Xtriage
$F_o, F_c$ correlation	0.83	EDS
Total number of atoms	14397	wwPDB-VP
Average B, all atoms (Å <sup>2</sup> )	36.0	wwPDB-VP

Xtriage's analysis on translational NCS is as follows: *The largest off-origin peak in the Patterson function is 11.45% of the height of the origin peak. No significant pseudotranslation is detected.*

<sup>1</sup>Intensities estimated from amplitudes.

<sup>2</sup>Theoretical values of  $\langle |L| \rangle$ ,  $\langle L^2 \rangle$  for acentric reflections are 0.5, 0.375 respectively for untwinned datasets, and 0.333, 0.2 for perfectly twinned datasets.

## 5 Model quality [i](#)

### 5.1 Standard geometry [i](#)

Bond lengths and bond angles in the following residue types are not validated in this section: HSO, ATP

The Z score for a bond length (or angle) is the number of standard deviations the observed value is removed from the expected value. A bond length (or angle) with  $|Z| > 5$  is considered an outlier worth inspection. RMSZ is the root-mean-square of all Z scores of the bond lengths (or angles).

Mol	Chain	Bond lengths		Bond angles	
		RMSZ	# $ Z  > 5$	RMSZ	# $ Z  > 5$
1	A	0.78	3/2991 (0.1%)	0.96	8/4046 (0.2%)
1	B	0.79	0/2863	0.92	5/3873 (0.1%)
1	C	0.74	0/3037	0.91	3/4109 (0.1%)
1	D	0.76	0/2860	0.90	2/3869 (0.1%)
All	All	0.77	3/11751 (0.0%)	0.92	18/15897 (0.1%)

Chiral center outliers are detected by calculating the chiral volume of a chiral center and verifying if the center is modelled as a planar moiety or with the opposite hand. A planarity outlier is detected by checking planarity of atoms in a peptide group, atoms in a mainchain group or atoms of a sidechain that are expected to be planar.

Mol	Chain	#Chirality outliers	#Planarity outliers
1	B	0	1
1	C	0	2
All	All	0	3

All (3) bond length outliers are listed below:

Mol	Chain	Res	Type	Atoms	Z	Observed(Å)	Ideal(Å)
1	A	131	GLU	CD-OE2	6.02	1.32	1.25
1	A	131	GLU	CD-OE1	-5.22	1.20	1.25
1	A	143	GLU	CB-CG	5.05	1.61	1.52

The worst 5 of 18 bond angle outliers are listed below:

Mol	Chain	Res	Type	Atoms	Z	Observed(°)	Ideal(°)
1	B	116	ARG	C-N-CD	-10.59	97.30	120.60
1	A	320	ASN	C-N-CD	-8.14	102.68	120.60
1	A	311	ARG	NE-CZ-NH2	-7.36	116.62	120.30
1	A	309	LEU	CA-CB-CG	-7.15	98.85	115.30

*Continued on next page...*

*Continued from previous page...*

Mol	Chain	Res	Type	Atoms	Z	Observed(°)	Ideal(°)
1	A	311	ARG	NE-CZ-NH1	6.74	123.67	120.30

There are no chirality outliers.

All (3) planarity outliers are listed below:

Mol	Chain	Res	Type	Group
1	B	99	TYR	Sidechain
1	C	122	TYR	Sidechain
1	C	288	TYR	Sidechain

## 5.2 Too-close contacts

In the following table, the Non-H and H(model) columns list the number of non-hydrogen atoms and hydrogen atoms in the chain respectively. The H(added) column lists the number of hydrogen atoms added and optimized by MolProbity. The Clashes column lists the number of clashes within the asymmetric unit, whereas Symm-Clashes lists symmetry related clashes.

Mol	Chain	Non-H	H(model)	H(added)	Clashes	Symm-Clashes
1	A	2938	674	2899	212	0
1	B	2812	643	2768	220	0
1	C	2984	682	2932	210	0
1	D	2809	643	2762	224	0
2	A	10	3	10	0	0
2	B	10	3	10	1	0
2	C	10	3	10	2	0
2	D	10	3	10	1	0
3	A	31	3	12	3	0
3	B	31	3	12	11	0
3	C	31	3	12	8	0
3	D	31	3	12	12	0
4	A	13	0	0	0	0
4	B	5	0	0	1	0
4	C	4	0	0	0	0
4	D	2	0	0	0	0
All	All	11731	2666	11449	828	0

The all-atom clashscore is defined as the number of clashes found per 1000 atoms (including hydrogen atoms). The all-atom clashscore for this structure is 36.

The worst 5 of 828 close contacts within the same asymmetric unit are listed below, sorted by their clash magnitude.

Atom-1	Atom-2	Interatomic distance (Å)	Clash overlap (Å)
1:C:67:MET:HE3	1:C:79:THR:HG21	1.27	1.08
1:A:136:GLN:HG2	1:A:301:PRO:HG2	1.34	1.05
1:A:120:GLY:HA3	1:A:279:GLN:HG2	1.38	1.03
1:C:350:ARG:HH22	1:C:412:GLN:HG2	1.19	1.02
1:C:370:LYS:HE2	1:C:370:LYS:HA	1.43	1.00

There are no symmetry-related clashes.

## 5.3 Torsion angles [i](#)

### 5.3.1 Protein backbone [i](#)

In the following table, the Percentiles column shows the percent Ramachandran outliers of the chain as a percentile score with respect to all X-ray entries followed by that with respect to entries of similar resolution.

The Analysed column shows the number of residues for which the backbone conformation was analysed, and the total number of residues.

Mol	Chain	Analysed	Favoured	Allowed	Outliers	Percentiles	
1	A	375/424 (88%)	326 (87%)	38 (10%)	11 (3%)	6	19
1	B	360/424 (85%)	317 (88%)	35 (10%)	8 (2%)	8	28
1	C	383/424 (90%)	331 (86%)	41 (11%)	11 (3%)	6	19
1	D	360/424 (85%)	317 (88%)	38 (11%)	5 (1%)	14	42
All	All	1478/1696 (87%)	1291 (87%)	152 (10%)	35 (2%)	7	25

5 of 35 Ramachandran outliers are listed below:

Mol	Chain	Res	Type
1	A	288	TYR
1	A	338	ALA
1	B	64	GLU
1	B	288	TYR
1	B	338	ALA

### 5.3.2 Protein sidechains [i](#)

In the following table, the Percentiles column shows the percent sidechain outliers of the chain as a percentile score with respect to all X-ray entries followed by that with respect to entries of similar resolution.

The Analysed column shows the number of residues for which the sidechain conformation was analysed, and the total number of residues.

Mol	Chain	Analysed	Rotameric	Outliers	Percentiles	
1	A	299/342 (87%)	251 (84%)	48 (16%)	3	9
1	B	286/342 (84%)	235 (82%)	51 (18%)	2	6
1	C	301/342 (88%)	247 (82%)	54 (18%)	2	6
1	D	285/342 (83%)	229 (80%)	56 (20%)	1	5
All	All	1171/1368 (86%)	962 (82%)	209 (18%)	2	6

5 of 209 residues with a non-rotameric sidechain are listed below:

Mol	Chain	Res	Type
1	B	382	ARG
1	C	119	LYS
1	D	309	LEU
1	B	408	THR
1	C	73	ARG

Some sidechains can be flipped to improve hydrogen bonding and reduce clashes. 5 of 34 such sidechains are listed below:

Mol	Chain	Res	Type
1	C	4	ASN
1	C	255	GLN
1	D	320	ASN
1	C	100	ASN
1	A	372	GLN

### 5.3.3 RNA ⓘ

There are no RNA molecules in this entry.

## 5.4 Non-standard residues in protein, DNA, RNA chains ⓘ

There are no non-standard protein/DNA/RNA residues in this entry.

## 5.5 Carbohydrates ⓘ

There are no carbohydrates in this entry.

## 5.6 Ligand geometry

8 ligands are modelled in this entry.

In the following table, the Counts columns list the number of bonds (or angles) for which Mogul statistics could be retrieved, the number of bonds (or angles) that are observed in the model and the number of bonds (or angles) that are defined in the chemical component dictionary. The Link column lists molecule types, if any, to which the group is linked. The Z score for a bond length (or angle) is the number of standard deviations the observed value is removed from the expected value. A bond length (or angle) with  $|Z| > 2$  is considered an outlier worth inspection. RMSZ is the root-mean-square of all Z scores of the bond lengths (or angles).

Mol	Type	Chain	Res	Link	Bond lengths			Bond angles		
					Counts	RMSZ	# $ Z  > 2$	Counts	RMSZ	# $ Z  > 2$
2	HSO	A	451	-	5,10,10	1.96	1 (20%)	2,12,12	2.37	1 (50%)
3	ATP	A	452	-	24,33,33	0.76	0	31,52,52	0.89	1 (3%)
2	HSO	B	451	-	5,10,10	1.78	1 (20%)	2,12,12	2.24	1 (50%)
3	ATP	B	452	-	24,33,33	0.76	0	31,52,52	0.73	0
2	HSO	C	451	-	5,10,10	1.90	1 (20%)	2,12,12	2.41	1 (50%)
3	ATP	C	452	-	24,33,33	0.78	0	31,52,52	0.85	0
2	HSO	D	451	-	5,10,10	1.84	1 (20%)	2,12,12	2.58	1 (50%)
3	ATP	D	452	-	24,33,33	0.74	0	31,52,52	0.85	1 (3%)

In the following table, the Chirals column lists the number of chiral outliers, the number of chiral centers analysed, the number of these observed in the model and the number defined in the chemical component dictionary. Similar counts are reported in the Torsion and Rings columns. '-' means no outliers of that kind were identified.

Mol	Type	Chain	Res	Link	Chirals	Torsions	Rings
2	HSO	A	451	-	-	0/5/6/6	0/1/1/1
3	ATP	A	452	-	-	0/18/38/38	0/3/3/3
2	HSO	B	451	-	-	0/5/6/6	0/1/1/1
3	ATP	B	452	-	-	0/18/38/38	0/3/3/3
2	HSO	C	451	-	-	0/5/6/6	0/1/1/1
3	ATP	C	452	-	-	0/18/38/38	0/3/3/3
2	HSO	D	451	-	-	0/5/6/6	0/1/1/1
3	ATP	D	452	-	-	0/18/38/38	0/3/3/3

All (4) bond length outliers are listed below:

Mol	Chain	Res	Type	Atoms	Z	Observed(Å)	Ideal(Å)
2	A	451	HSO	O-C	-4.32	1.23	1.42
2	C	451	HSO	O-C	-4.09	1.24	1.42
2	D	451	HSO	O-C	-4.04	1.24	1.42

*Continued on next page...*

*Continued from previous page...*

Mol	Chain	Res	Type	Atoms	Z	Observed(Å)	Ideal(Å)
2	B	451	HSO	O-C	-3.85	1.25	1.42

The worst 5 of 6 bond angle outliers are listed below:

Mol	Chain	Res	Type	Atoms	Z	Observed(°)	Ideal(°)
3	D	452	ATP	O3G-PG-O2G	2.08	115.31	107.38
3	A	452	ATP	C2'-C1'-N9	2.18	117.63	114.29
2	B	451	HSO	O-C-CA	3.16	120.11	111.84
2	A	451	HSO	O-C-CA	3.25	120.36	111.84
2	C	451	HSO	O-C-CA	3.40	120.74	111.84

There are no chirality outliers.

There are no torsion outliers.

There are no ring outliers.

7 monomers are involved in 36 short contacts:

Mol	Chain	Res	Type	Clashes	Symm-Clashes
3	A	452	ATP	3	0
2	B	451	HSO	1	0
3	B	452	ATP	11	0
2	C	451	HSO	2	0
3	C	452	ATP	8	0
2	D	451	HSO	1	0
3	D	452	ATP	12	0

## 5.7 Other polymers [i](#)

There are no such residues in this entry.

## 5.8 Polymer linkage issues [i](#)

There are no chain breaks in this entry.



## 6 Fit of model and data [i](#)

### 6.1 Protein, DNA and RNA chains [i](#)

In the following table, the column labelled ‘#RSRZ> 2’ contains the number (and percentage) of RSRZ outliers, followed by percent RSRZ outliers for the chain as percentile scores relative to all X-ray entries and entries of similar resolution. The OWAB column contains the minimum, median, 95<sup>th</sup> percentile and maximum values of the occupancy-weighted average B-factor per residue. The column labelled ‘Q< 0.9’ lists the number of (and percentage) of residues with an average occupancy less than 0.9.

Mol	Chain	Analysed	<RSRZ>	#RSRZ>2	OWAB(Å <sup>2</sup> )	Q<0.9
1	A	379/424 (89%)	-0.45	1 (0%) 94 92	13, 41, 69, 81	0
1	B	364/424 (85%)	-0.38	5 (1%) 78 69	16, 44, 75, 96	0
1	C	387/424 (91%)	-0.45	0 100 100	14, 43, 69, 77	0
1	D	364/424 (85%)	-0.40	5 (1%) 78 69	16, 44, 76, 99	0
All	All	1494/1696 (88%)	-0.42	11 (0%) 89 84	13, 43, 72, 99	0

The worst 5 of 11 RSRZ outliers are listed below:

Mol	Chain	Res	Type	RSRZ
1	D	278	SER	4.4
1	B	424	GLY	3.0
1	D	424	GLY	2.8
1	B	257	LEU	2.8
1	B	59	VAL	2.6

### 6.2 Non-standard residues in protein, DNA, RNA chains [i](#)

There are no non-standard protein/DNA/RNA residues in this entry.

### 6.3 Carbohydrates [i](#)

There are no carbohydrates in this entry.

### 6.4 Ligands [i](#)

In the following table, the Atoms column lists the number of modelled atoms in the group and the number defined in the chemical component dictionary. LLDF column lists the quality of electron density of the group with respect to its neighbouring residues in protein, DNA or RNA chains. The B-factors column lists the minimum, median, 95<sup>th</sup> percentile and maximum values of B factors

of atoms in the group. The column labelled 'Q< 0.9' lists the number of atoms with occupancy less than 0.9.

Mol	Type	Chain	Res	Atoms	RSCC	RSR	LLDF	B-factors( $\text{\AA}^2$ )	Q<0.9
2	HSO	C	451	10/10	0.91	0.18	1.83	0,31,35,41	0
2	HSO	A	451	10/10	0.92	0.18	1.77	0,28,34,37	0
2	HSO	D	451	10/10	0.93	0.16	0.45	0,35,38,40	0
2	HSO	B	451	10/10	0.94	0.15	0.32	0,26,32,32	0
3	ATP	D	452	31/31	0.91	0.17	0.15	0,57,69,70	0
3	ATP	B	452	31/31	0.91	0.15	-0.09	0,45,78,79	0
3	ATP	A	452	31/31	0.94	0.13	-0.44	0,35,47,52	0
3	ATP	C	452	31/31	0.94	0.13	-0.52	0,35,55,58	0

## 6.5 Other polymers [i](#)

There are no such residues in this entry.