



# Full wwPDB X-ray Structure Validation Report ⓘ

Jan 31, 2016 – 08:37 PM GMT

PDB ID : 1L6Y  
Title : Crystal Structure of Porphobilinogen Synthase Complexed with the Inhibitor 4-Oxosebacic Acid  
Authors : Jaffe, E.K.; Kervinen, J.; Martins, J.; Stauffer, F.; Neier, R.; Wlodawer, A.; Zdanov, A.  
Deposited on : 2002-03-14  
Resolution : 1.90 Å(reported)

This is a Full wwPDB X-ray Structure Validation Report for a publicly released PDB entry.  
We welcome your comments at [validation@mail.wwpdb.org](mailto:validation@mail.wwpdb.org)  
A user guide is available at  
<http://wwpdb.org/validation/2016/XrayValidationReportHelp>  
with specific help available everywhere you see the ⓘ symbol.

---

The following versions of software and data (see [references ⓘ](#)) were used in the production of this report:

MolProbity : 4.02b-467  
Mogul : 1.7 (RC4), CSD as536be (2015)  
Xtriage (Phenix) : **NOT EXECUTED**  
EDS : **NOT EXECUTED**  
Percentile statistics : 20151230.v01 (using entries in the PDB archive December 30th 2015)  
Ideal geometry (proteins) : Engh & Huber (2001)  
Ideal geometry (DNA, RNA) : Parkinson et al. (1996)  
Validation Pipeline (wwPDB-VP) : trunk26865

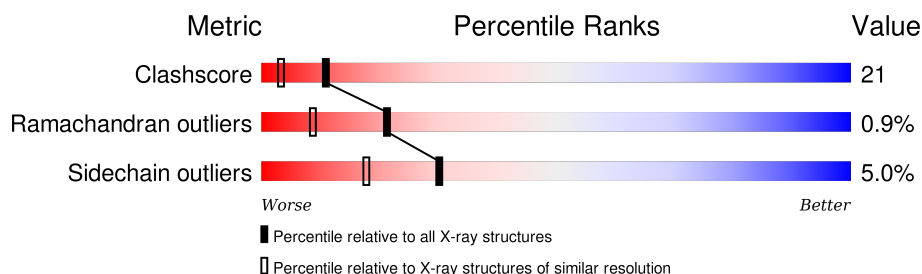
# 1 Overall quality at a glance

The following experimental techniques were used to determine the structure:

*X-RAY DIFFRACTION*

The reported resolution of this entry is 1.90 Å.

Percentile scores (ranging between 0-100) for global validation metrics of the entry are shown in the following graphic. The table shows the number of entries on which the scores are based.



Metric	Whole archive (#Entries)	Similar resolution (#Entries, resolution range(Å))
Clashscore	102246	5398 (1.90-1.90)
Ramachandran outliers	100387	5338 (1.90-1.90)
Sidechain outliers	100360	5339 (1.90-1.90)

The table below summarises the geometric issues observed across the polymeric chains and their fit to the electron density. The red, orange, yellow and green segments on the lower bar indicate the fraction of residues that contain outliers for  $\geq 3$ , 2, 1 and 0 types of geometric quality criteria. A grey segment represents the fraction of residues that are not modelled. The numeric value for each fraction is indicated below the corresponding segment, with a dot representing fractions  $\leq 5\%$ . The upper red bar (where present) indicates the fraction of residues that have poor fit to the electron density. The numeric value is given above the bar.

Note EDS was not executed.

Mol	Chain	Length	Quality of chain
1	A	323	 65% 33% •
1	B	323	 55% 40% 5%

## 2 Entry composition

There are 6 unique types of molecules in this entry. The entry contains 5419 atoms, of which 0 are hydrogens and 0 are deuteriums.

In the tables below, the ZeroOcc column contains the number of atoms modelled with zero occupancy, the AltConf column contains the number of residues with at least one atom in alternate conformation and the Trace column contains the number of residues modelled with at most 2 atoms.

- Molecule 1 is a protein called PORPHOBILINOGEN SYNTHASE.

Mol	Chain	Residues	Atoms					ZeroOcc	AltConf	Trace
1	A	323	Total	C	N	O	S	0	0	0
			2463	1538	429	476	20			
1	B	323	Total	C	N	O	S	0	0	0
			2463	1538	429	476	20			

There are 2 discrepancies between the modelled and reference sequences:

Chain	Residue	Modelled	Actual	Comment	Reference
A	133	CME	CYS	MODIFIED RESIDUE	UNP P0ACB2
B	133	CME	CYS	MODIFIED RESIDUE	UNP P0ACB2

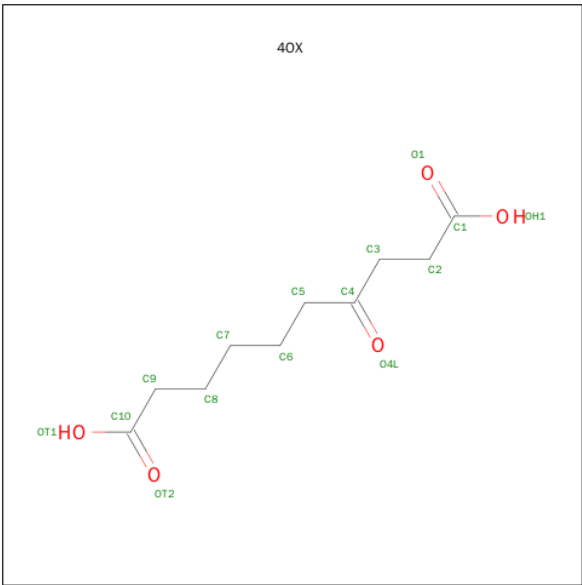
- Molecule 2 is ZINC ION (three-letter code: ZN) (formula: Zn).

Mol	Chain	Residues	Atoms		ZeroOcc	AltConf
2	B	1	Total	Zn	0	0
			1	1		
2	A	1	Total	Zn	0	0
			1	1		

- Molecule 3 is MAGNESIUM ION (three-letter code: MG) (formula: Mg).

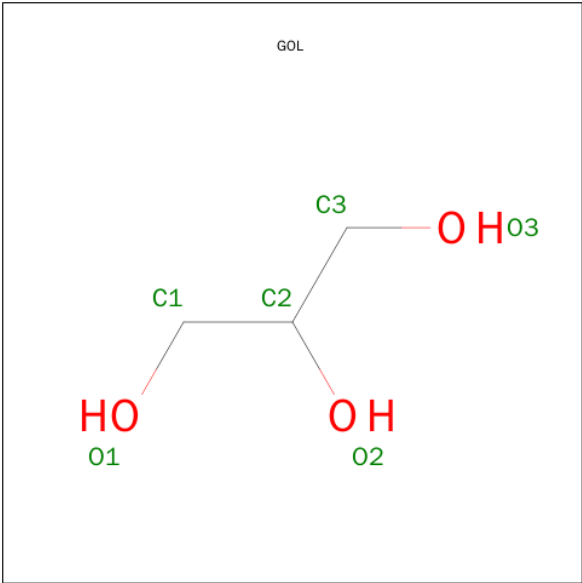
Mol	Chain	Residues	Atoms		ZeroOcc	AltConf
3	B	1	Total	Mg	0	0
			1	1		
3	A	1	Total	Mg	0	0
			1	1		

- Molecule 4 is 4-OXODECANEDIOIC ACID (three-letter code: 4OX) (formula: C<sub>10</sub>H<sub>16</sub>O<sub>5</sub>).



Mol	Chain	Residues	Atoms			ZeroOcc	AltConf
4	A	1	Total	C	O	0	0
			14	10	4		
4	B	1	Total	C	O	0	0
			14	10	4		

- Molecule 5 is GLYCEROL (three-letter code: GOL) (formula: C<sub>3</sub>H<sub>8</sub>O<sub>3</sub>).



Mol	Chain	Residues	Atoms			ZeroOcc	AltConf
5	A	1	Total	C	O	0	0
			6	3	3		
5	A	1	Total	C	O	0	0
			6	3	3		

Continued on next page...

*Continued from previous page...*

Mol	Chain	Residues	Atoms			ZeroOcc	AltConf
5	B	1	Total	C	O	0	0
			6	3	3		
5	A	1	Total	C	O	0	0
			6	3	3		
5	A	1	Total	C	O	0	0
			6	3	3		

- Molecule 6 is water.

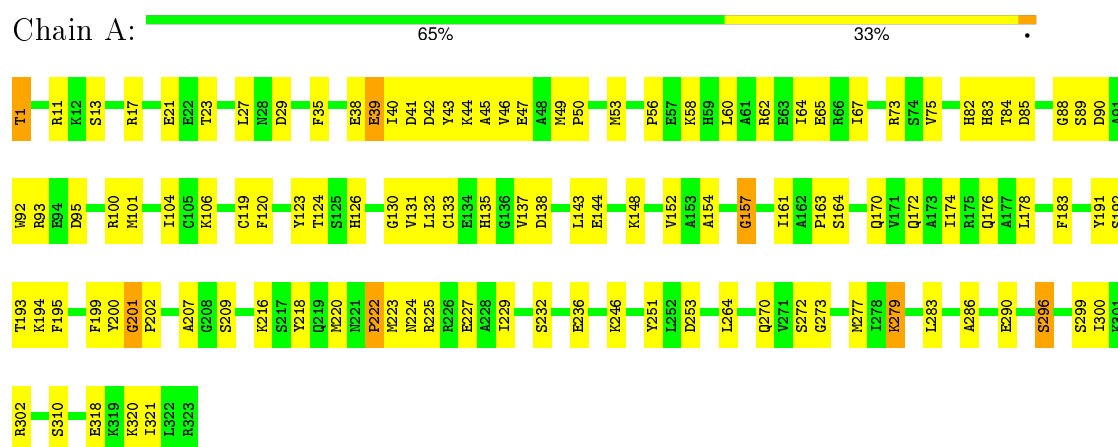
Mol	Chain	Residues	Atoms		ZeroOcc	AltConf
6	A	216	Total	O	0	0
			216	216		
6	B	215	Total	O	0	0
			215	215		

### 3 Residue-property plots

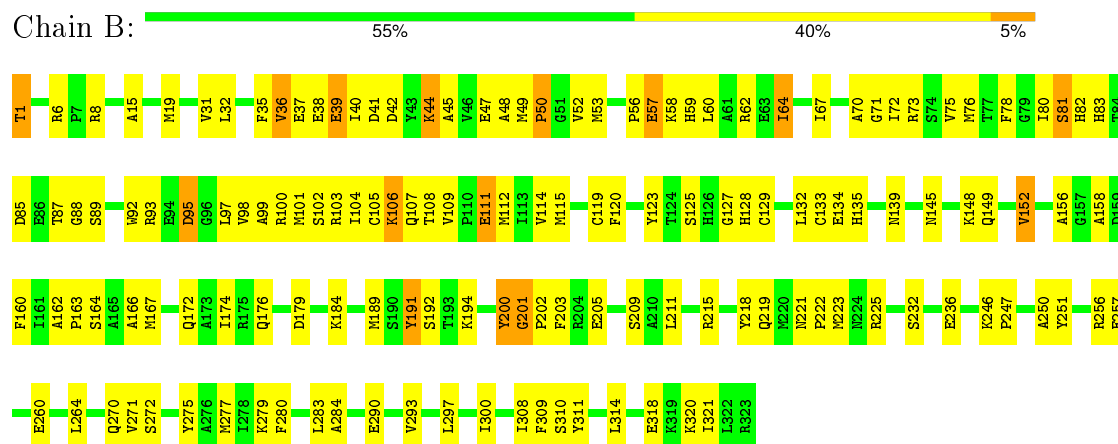
These plots are drawn for all protein, RNA and DNA chains in the entry. The first graphic for a chain summarises the proportions of errors displayed in the second graphic. The second graphic shows the sequence view annotated by issues in geometry and electron density. Residues are color-coded according to the number of geometric quality criteria for which they contain at least one outlier: green = 0, yellow = 1, orange = 2 and red = 3 or more. A red dot above a residue indicates a poor fit to the electron density ( $RSRZ > 2$ ). Stretches of 2 or more consecutive residues without any outlier are shown as a green connector. Residues present in the sample, but not in the model, are shown in grey.

Note EDS was not executed.

#### • Molecule 1: PORPHOBILINOGEN SYNTHASE



#### • Molecule 1: PORPHOBILINOGEN SYNTHASE



## 4 Data and refinement statistics

Xtriage (Phenix) and EDS were not executed - this section will therefore be incomplete.

Property	Value	Source
Space group	P 4 21 2	Depositor
Cell constants a, b, c, $\alpha$ , $\beta$ , $\gamma$	129.00Å 129.00Å 142.80Å 90.00° 90.00° 90.00°	Depositor
Resolution (Å)	40.00 – 1.90	Depositor
% Data completeness (in resolution range)	99.8 (40.00-1.90)	Depositor
$R_{merge}$	0.06	Depositor
$R_{sym}$	(Not available)	Depositor
Refinement program	CNS	Depositor
R, $R_{free}$	0.206 , 0.263	Depositor
Estimated twinning fraction	No twinning to report.	Xtriage
Total number of atoms	5419	wwPDB-VP
Average B, all atoms (Å <sup>2</sup> )	43.0	wwPDB-VP

## 5 Model quality

### 5.1 Standard geometry

Bond lengths and bond angles in the following residue types are not validated in this section: 4OX, GOL, ZN, MG, CME

The Z score for a bond length (or angle) is the number of standard deviations the observed value is removed from the expected value. A bond length (or angle) with  $|Z| > 5$  is considered an outlier worth inspection. RMSZ is the root-mean-square of all Z scores of the bond lengths (or angles).

Mol	Chain	Bond lengths		Bond angles	
		RMSZ	$\# Z  > 5$	RMSZ	$\# Z  > 5$
1	A	0.90	1/2491 (0.0%)	1.01	5/3360 (0.1%)
1	B	0.89	2/2491 (0.1%)	0.98	2/3360 (0.1%)
All	All	0.90	3/4982 (0.1%)	1.00	7/6720 (0.1%)

Chiral center outliers are detected by calculating the chiral volume of a chiral center and verifying if the center is modelled as a planar moiety or with the opposite hand. A planarity outlier is detected by checking planarity of atoms in a peptide group, atoms in a mainchain group or atoms of a sidechain that are expected to be planar.

Mol	Chain	#Chirality outliers	#Planarity outliers
1	B	0	1

All (3) bond length outliers are listed below:

Mol	Chain	Res	Type	Atoms	Z	Observed(Å)	Ideal(Å)
1	B	129	CYS	CB-SG	6.79	1.93	1.82
1	A	39	GLU	CB-CG	6.11	1.63	1.52
1	B	39	GLU	CB-CG	5.43	1.62	1.52

All (7) bond angle outliers are listed below:

Mol	Chain	Res	Type	Atoms	Z	Observed(°)	Ideal(°)
1	A	253	ASP	CB-CG-OD1	6.12	123.81	118.30
1	B	191	TYR	N-CA-C	-5.89	95.09	111.00
1	A	29	ASP	CB-CG-OD2	-5.39	113.45	118.30
1	B	6	ARG	NE-CZ-NH1	5.13	122.87	120.30
1	A	157	GLY	N-CA-C	5.03	125.68	113.10
1	A	29	ASP	CB-CG-OD1	5.02	122.82	118.30
1	A	62	ARG	NE-CZ-NH2	-5.01	117.80	120.30



There are no chirality outliers.

All (1) planarity outliers are listed below:

Mol	Chain	Res	Type	Group
1	B	200	TYR	Sidechain

## 5.2 Too-close contacts ⓘ

In the following table, the Non-H and H(model) columns list the number of non-hydrogen atoms and hydrogen atoms in the chain respectively. The H(added) column lists the number of hydrogen atoms added and optimized by MolProbity. The Clashes column lists the number of clashes within the asymmetric unit, whereas Symm-Clashes lists symmetry related clashes.

Mol	Chain	Non-H	H(model)	H(added)	Clashes	Symm-Clashes
1	A	2463	0	2418	92	1
1	B	2463	0	2418	119	2
2	A	1	0	0	0	0
2	B	1	0	0	0	0
3	A	1	0	0	0	0
3	B	1	0	0	0	0
4	A	14	0	14	0	0
4	B	14	0	14	4	0
5	A	24	0	32	0	0
5	B	6	0	8	1	0
6	A	216	0	0	9	1
6	B	215	0	0	12	0
All	All	5419	0	4904	208	4

The all-atom clashscore is defined as the number of clashes found per 1000 atoms (including hydrogen atoms). The all-atom clashscore for this structure is 21.

All (208) close contacts within the same asymmetric unit are listed below, sorted by their clash magnitude.

Atom-1	Atom-2	Interatomic distance (Å)	Clash overlap (Å)
1:A:236:GLU:HG3	1:A:264:LEU:HD12	1.48	0.92
1:A:132:LEU:O	1:A:133:CME:HE3	1.75	0.84
1:A:236:GLU:HG3	1:A:264:LEU:CD1	2.08	0.84
1:B:172:GLN:O	1:B:176:GLN:HG3	1.84	0.78
1:B:103:ARG:HD3	6:B:629:HOH:O	1.83	0.77
1:B:279:LYS:O	1:B:283:LEU:HD13	1.87	0.75
1:B:53:MET:HE2	6:B:575:HOH:O	1.89	0.73
1:A:64:ILE:HD12	1:A:67:ILE:HD12	1.71	0.73

*Continued on next page...*

*Continued from previous page...*

Atom-1	Atom-2	Interatomic distance (Å)	Clash overlap (Å)
1:A:172:GLN:O	1:A:176:GLN:HG3	1.89	0.72
1:A:40:ILE:CD1	1:A:56:PRO:HG3	2.20	0.72
1:A:164:SER:O	1:A:194:LYS:HE2	1.90	0.71
1:A:270:GLN:HG2	6:A:417:HOH:O	1.90	0.70
1:A:106:LYS:HE2	6:A:744:HOH:O	1.91	0.69
1:A:286:ALA:O	1:B:202:PRO:HD3	1.93	0.68
1:B:48:ALA:CB	1:B:202:PRO:HB3	2.24	0.68
1:B:59:HIS:CE1	1:B:62:ARG:HH21	2.11	0.68
1:B:1:THR:O	6:B:526:HOH:O	2.12	0.68
1:B:247:PRO:HG2	1:B:251:TYR:CE2	2.29	0.67
1:B:275:TYR:CD2	1:B:311:TYR:HB2	2.29	0.67
1:A:223:MET:HE3	6:A:701:HOH:O	1.94	0.67
1:A:163:PRO:HG3	1:A:174:ILE:HD12	1.77	0.67
1:A:143:LEU:HD22	1:A:170:GLN:HA	1.76	0.67
1:B:41:ASP:O	1:B:58:LYS:HE2	1.94	0.67
1:A:191:TYR:CE2	1:A:246:LYS:HE2	2.30	0.66
1:B:300:ILE:HG21	1:B:308:ILE:HG12	1.76	0.66
1:A:299:SER:HA	1:A:302:ARG:NH1	2.12	0.65
1:A:40:ILE:HG21	1:A:44:LYS:HE3	1.77	0.65
1:A:137:VAL:HG23	6:A:714:HOH:O	1.96	0.65
1:B:164:SER:HB2	1:B:194:LYS:NZ	2.12	0.65
1:A:88:GLY:HA2	1:A:123:TYR:O	1.96	0.65
1:B:139:ASN:HB2	6:B:603:HOH:O	1.96	0.64
1:B:164:SER:HB2	1:B:194:LYS:HZ3	1.63	0.63
1:A:318:GLU:C	1:A:320:LYS:H	2.02	0.63
4:B:350:4OX:HC71	6:B:686:HOH:O	1.99	0.63
1:B:300:ILE:CG2	1:B:308:ILE:HG12	2.29	0.62
1:A:43:TYR:CD1	1:A:56:PRO:HD2	2.34	0.62
1:B:56:PRO:CG	1:B:59:HIS:HD2	2.13	0.62
4:B:350:4OX:HC62	6:B:429:HOH:O	2.00	0.62
1:B:236:GLU:HG3	1:B:264:LEU:CD1	2.31	0.61
1:A:277:MET:O	1:B:277:MET:HG2	2.01	0.60
1:B:56:PRO:HG3	1:B:59:HIS:HD2	1.65	0.60
1:B:128:HIS:CD2	1:B:132:LEU:HD21	2.36	0.60
1:A:89:SER:HA	1:A:92:TRP:CZ3	2.37	0.60
1:B:48:ALA:HB1	1:B:202:PRO:HB3	1.82	0.60
1:B:127:GLY:HA3	1:B:211:LEU:N	2.17	0.59
1:B:64:ILE:HG23	1:B:109:VAL:HG23	1.83	0.59
1:B:56:PRO:O	1:B:58:LYS:N	2.35	0.59
1:B:133:CME:C	1:B:135:HIS:H	2.15	0.59
1:A:38:GLU:O	1:A:82:HIS:CD2	2.55	0.59

*Continued on next page...*

*Continued from previous page...*

Atom-1	Atom-2	Interatomic distance (Å)	Clash overlap (Å)
1:A:43:TYR:CE1	1:A:56:PRO:HD2	2.38	0.58
1:A:106:LYS:HG3	1:A:157:GLY:O	2.03	0.58
1:A:41:ASP:OD2	1:A:58:LYS:HE3	2.03	0.58
1:A:40:ILE:HD11	1:A:56:PRO:HG3	1.86	0.58
1:A:39:GLU:OE2	1:A:83:HIS:CE1	2.57	0.58
1:B:270:GLN:NE2	1:B:310:SER:OG	2.37	0.58
1:B:98:VAL:HB	6:B:733:HOH:O	2.02	0.57
1:B:32:LEU:O	1:B:75:VAL:HA	2.05	0.57
1:A:39:GLU:HB2	1:A:82:HIS:CD2	2.39	0.57
1:A:47:GLU:HA	1:A:47:GLU:OE1	2.04	0.57
1:A:41:ASP:HA	1:A:58:LYS:HD3	1.86	0.57
1:B:284:ALA:HB2	6:B:444:HOH:O	2.05	0.56
1:A:120:PHE:O	1:A:124:THR:HG23	2.04	0.56
1:A:40:ILE:HD12	1:A:56:PRO:HG3	1.87	0.56
1:A:279:LYS:O	1:A:283:LEU:HG	2.04	0.56
1:B:39:GLU:OE2	1:B:83:HIS:HE1	1.90	0.55
1:B:202:PRO:HG2	1:B:272:SER:HB2	1.87	0.55
1:A:21:GLU:HG3	1:B:221:ASN:HD21	1.72	0.55
1:A:45:ALA:HA	1:A:53:MET:HB3	1.89	0.55
1:B:48:ALA:C	1:B:50:PRO:HD3	2.27	0.55
1:B:192:SER:HB2	1:B:232:SER:HA	1.88	0.55
1:A:35:PHE:CE1	1:A:207:ALA:HB2	2.42	0.55
1:A:64:ILE:CD1	1:A:67:ILE:HD12	2.37	0.54
1:B:103:ARG:O	1:B:107:GLN:HB2	2.07	0.54
1:B:48:ALA:HB3	1:B:202:PRO:HB3	1.90	0.54
1:A:39:GLU:OE2	1:A:83:HIS:HE1	1.90	0.54
1:A:199:PHE:O	1:A:273:GLY:HA3	2.08	0.54
1:B:67:ILE:HA	1:B:314:LEU:CD1	2.38	0.54
1:B:56:PRO:HG2	1:B:59:HIS:CD2	2.43	0.54
1:A:143:LEU:CD2	1:A:170:GLN:HA	2.37	0.53
1:B:73:ARG:HH11	1:B:73:ARG:HG2	1.72	0.53
1:A:270:GLN:NE2	1:A:310:SER:OG	2.42	0.53
1:B:100:ARG:O	1:B:104:ILE:HG13	2.08	0.53
1:B:148:LYS:O	1:B:152:VAL:HG22	2.08	0.53
1:A:296:SER:O	1:A:300:ILE:HG13	2.09	0.52
1:B:111:GLU:OE1	1:B:111:GLU:HA	2.09	0.52
1:B:39:GLU:OE2	1:B:83:HIS:CE1	2.62	0.52
1:B:56:PRO:CG	1:B:59:HIS:CD2	2.92	0.52
1:B:106:LYS:NZ	1:B:112:MET:O	2.41	0.51
1:B:148:LYS:NZ	6:B:652:HOH:O	2.44	0.51
1:A:40:ILE:HG13	1:A:56:PRO:HB3	1.93	0.51

*Continued on next page...*

*Continued from previous page...*

Atom-1	Atom-2	Interatomic distance (Å)	Clash overlap (Å)
1:A:194:LYS:NZ	1:A:246:LYS:HE3	2.26	0.51
1:A:39:GLU:HB2	1:A:82:HIS:HD2	1.73	0.51
1:A:192:SER:HB2	1:A:232:SER:HA	1.91	0.51
1:A:225:ARG:O	1:A:229:ILE:HG12	2.11	0.51
1:A:41:ASP:HA	1:A:58:LYS:CD	2.42	0.50
1:B:85:ASP:O	1:B:125:SER:N	2.45	0.50
1:B:179:ASP:OD1	1:B:184:LYS:HA	2.12	0.50
1:B:64:ILE:HG23	1:B:109:VAL:CG2	2.42	0.50
1:B:38:GLU:OE2	1:B:82:HIS:N	2.42	0.50
1:A:224:ASN:HB3	1:A:227:GLU:HB3	1.93	0.49
1:A:163:PRO:HG3	1:A:174:ILE:CD1	2.43	0.49
1:B:67:ILE:HA	1:B:314:LEU:HD11	1.93	0.49
1:B:45:ALA:HA	1:B:53:MET:HG2	1.95	0.48
1:B:215:ARG:O	1:B:219:GLN:HB2	2.14	0.48
1:A:23:THR:HB	1:B:223:MET:HB3	1.95	0.48
1:B:40:ILE:HD12	1:B:56:PRO:HB3	1.95	0.48
1:B:164:SER:HB3	1:B:191:TYR:CE1	2.48	0.48
1:A:178:LEU:O	1:A:183:PHE:HB2	2.13	0.48
1:A:148:LYS:HA	6:A:496:HOH:O	2.13	0.48
1:B:247:PRO:HG2	1:B:251:TYR:HE2	1.79	0.48
1:B:191:TYR:HD2	1:B:246:LYS:HD3	1.78	0.48
1:A:218:TYR:HB3	1:B:8:ARG:NE	2.29	0.47
1:B:133:CME:C	1:B:135:HIS:N	2.78	0.47
1:B:318:GLU:C	1:B:320:LYS:H	2.17	0.47
1:A:318:GLU:C	1:A:320:LYS:N	2.67	0.47
1:A:216:LYS:HE2	6:A:440:HOH:O	2.15	0.47
1:A:100:ARG:O	1:A:104:ILE:HG13	2.14	0.47
1:B:293:VAL:O	1:B:297:LEU:HG	2.14	0.47
1:B:62:ARG:HG2	1:B:62:ARG:HH11	1.80	0.47
1:B:128:HIS:CE1	1:B:211:LEU:HD11	2.50	0.47
1:A:131:VAL:O	1:A:138:ASP:N	2.39	0.47
1:B:64:ILE:HG21	1:B:108:THR:HB	1.95	0.47
1:B:40:ILE:CD1	1:B:56:PRO:HB3	2.45	0.46
1:A:193:THR:HG22	1:A:195:PHE:CE2	2.50	0.46
1:B:36:VAL:HG11	1:B:60:LEU:HD22	1.96	0.46
1:B:64:ILE:HG12	1:B:105:CYS:SG	2.56	0.46
1:B:256:ARG:O	1:B:260:GLU:HG2	2.15	0.46
6:A:662:HOH:O	1:B:250:ALA:HA	2.15	0.46
1:B:89:SER:HB3	1:B:92:TRP:CZ2	2.51	0.46
1:B:64:ILE:CG2	1:B:109:VAL:HG23	2.45	0.46
1:A:35:PHE:HE1	1:A:207:ALA:HB2	1.80	0.46

*Continued on next page...*

*Continued from previous page...*

Atom-1	Atom-2	Interatomic distance (Å)	Clash overlap (Å)
1:A:154:ALA:HB2	1:A:178:LEU:HD21	1.98	0.46
1:A:194:LYS:HZ2	1:A:246:LYS:HE3	1.80	0.46
1:A:133:CME:C	1:A:135:HIS:H	2.28	0.45
1:B:236:GLU:HG3	1:B:264:LEU:HD12	1.99	0.45
1:B:47:GLU:N	1:B:205:GLU:OE2	2.50	0.45
1:B:35:PHE:HB3	1:B:80:ILE:HD11	1.99	0.45
1:B:200:TYR:HE1	1:B:271:VAL:HG11	1.80	0.45
1:B:89:SER:O	1:B:93:ARG:HG3	2.17	0.45
1:A:161:ILE:O	1:A:163:PRO:HD3	2.16	0.45
1:A:64:ILE:HA	1:A:64:ILE:HD12	1.90	0.44
1:B:215:ARG:HG2	1:B:218:TYR:OH	2.18	0.44
1:A:60:LEU:HD23	1:A:104:ILE:HB	1.98	0.44
1:A:279:LYS:HA	1:A:279:LYS:HD2	1.61	0.44
1:A:194:LYS:NZ	1:A:246:LYS:CE	2.80	0.44
1:A:286:ALA:HB2	1:B:280:PHE:HE2	1.83	0.44
1:B:120:PHE:CZ	1:B:145:ASN:HB3	2.53	0.44
1:B:37:GLU:OE1	1:B:44:LYS:NZ	2.49	0.44
1:B:209:SER:HB2	6:B:511:HOH:O	2.17	0.44
1:B:99:ALA:O	1:B:156:ALA:HB1	2.17	0.44
1:B:56:PRO:C	1:B:58:LYS:N	2.71	0.44
1:A:13:SER:O	1:A:17:ARG:HG3	2.17	0.44
1:A:45:ALA:HA	1:A:53:MET:CB	2.48	0.43
1:B:105:CYS:HB3	1:B:114:VAL:HG21	2.00	0.43
1:B:149:GLN:O	1:B:152:VAL:HG23	2.18	0.43
1:B:49:MET:O	1:B:52:VAL:HB	2.17	0.43
1:A:95:ASP:O	1:A:95:ASP:OD1	2.35	0.43
1:A:43:TYR:CD1	1:A:56:PRO:CD	3.01	0.43
1:A:290:GLU:OE1	1:A:321:ILE:CD1	2.66	0.43
1:A:45:ALA:HB2	1:A:53:MET:HE2	2.00	0.43
1:B:203:PHE:CD2	4:B:350:4OX:HC91	2.53	0.43
1:B:80:ILE:HD12	1:B:80:ILE:N	2.33	0.43
1:A:202:PRO:HB2	1:A:272:SER:HB2	2.00	0.43
1:B:163:PRO:HB3	1:B:174:ILE:CD1	2.48	0.43
1:B:64:ILE:HA	1:B:64:ILE:HD12	1.76	0.43
1:B:162:ALA:HA	1:B:189:MET:O	2.18	0.43
1:B:38:GLU:OE2	1:B:81:SER:HA	2.18	0.43
1:A:46:VAL:HG12	1:A:49:MET:H	1.84	0.43
1:B:31:VAL:HG11	1:B:309:PHE:CE1	2.54	0.43
1:B:88:GLY:HA2	1:B:123:TYR:O	2.19	0.43
1:B:76:MET:HG3	1:B:78:PHE:CE2	2.55	0.42
1:A:209:SER:HB2	6:A:777:HOH:O	2.19	0.42

*Continued on next page...*

*Continued from previous page...*

Atom-1	Atom-2	Interatomic distance (Å)	Clash overlap (Å)
1:B:102:SER:OG	1:B:158:ALA:HB2	2.19	0.42
1:B:71:GLY:HA3	5:B:903:GOL:H32	2.01	0.42
1:B:225:ARG:NH2	1:B:257:GLU:OE1	2.29	0.42
1:B:45:ALA:CB	1:B:53:MET:HG2	2.49	0.42
1:A:43:TYR:HB3	1:A:53:MET:SD	2.60	0.42
1:B:102:SER:O	1:B:106:LYS:HB2	2.20	0.42
1:B:95:ASP:O	1:B:100:ARG:NH1	2.51	0.42
1:A:144:GLU:O	1:A:148:LYS:HG3	2.20	0.42
1:B:38:GLU:O	1:B:82:HIS:CD2	2.73	0.42
1:B:67:ILE:O	1:B:70:ALA:HB3	2.19	0.42
1:B:119:CYS:SG	1:B:120:PHE:N	2.91	0.42
1:A:11:ARG:HA	1:A:17:ARG:HG2	2.02	0.42
1:B:87:THR:HB	1:B:92:TRP:HH2	1.84	0.41
1:A:84:THR:HG21	6:A:549:HOH:O	2.20	0.41
1:A:222:PRO:HB3	1:A:251:TYR:OH	2.21	0.41
1:B:15:ALA:O	1:B:19:MET:HG3	2.20	0.41
1:B:56:PRO:O	1:B:59:HIS:N	2.48	0.41
4:B:350:4OX:HC91	4:B:350:4OX:HC61	1.90	0.41
1:B:166:ALA:O	1:B:167:MET:HE2	2.21	0.41
1:A:1:THR:HG21	6:B:786:HOH:O	2.20	0.41
1:A:119:CYS:HB2	1:A:164:SER:HB3	2.03	0.41
1:A:236:GLU:HG3	1:A:264:LEU:HD11	1.98	0.41
1:A:133:CME:C	1:A:135:HIS:N	2.84	0.41
1:B:318:GLU:C	1:B:320:LYS:N	2.74	0.41
1:B:49:MET:HE2	1:B:49:MET:HB3	2.01	0.41
1:A:126:HIS:HE1	1:A:130:GLY:O	2.04	0.41
1:B:115:MET:HA	1:B:160:PHE:HB2	2.03	0.41
1:B:39:GLU:HB2	1:B:82:HIS:CD2	2.56	0.40
1:A:220:MET:HE3	1:A:227:GLU:HG2	2.03	0.40
1:B:56:PRO:O	1:B:57:GLU:C	2.58	0.40
1:B:97:LEU:O	1:B:101:MET:HG3	2.20	0.40
1:A:90:ASP:O	1:A:93:ARG:HB2	2.21	0.40
1:A:200:TYR:O	1:A:201:GLY:C	2.60	0.40
1:B:290:GLU:HB2	6:B:516:HOH:O	2.19	0.40
1:B:109:VAL:HG12	1:B:112:MET:H	1.87	0.40
1:B:200:TYR:O	1:B:201:GLY:C	2.59	0.40

All (4) symmetry-related close contacts are listed below. The label for Atom-2 includes the symmetry operator and encoded unit-cell translations to be applied.

Atom-1	Atom-2	Interatomic distance (Å)	Clash overlap (Å)
6:A:610:HOH:O	6:A:610:HOH:O[8_666]	1.48	0.72
1:B:39:GLU:OE2	1:B:39:GLU:OE2[8_665]	1.78	0.42
1:A:39:GLU:OE2	1:A:39:GLU:OE2[8_666]	1.94	0.26
1:B:83:HIS:NE2	1:B:83:HIS:NE2[8_665]	2.01	0.19

## 5.3 Torsion angles [i](#)

### 5.3.1 Protein backbone [i](#)

In the following table, the Percentiles column shows the percent Ramachandran outliers of the chain as a percentile score with respect to all X-ray entries followed by that with respect to entries of similar resolution.

The Analysed column shows the number of residues for which the backbone conformation was analysed, and the total number of residues.

Mol	Chain	Analysed	Favoured	Allowed	Outliers	Percentiles	
1	A	320/323 (99%)	297 (93%)	21 (7%)	2 (1%)	30	17
1	B	320/323 (99%)	299 (93%)	17 (5%)	4 (1%)	15	4
All	All	640/646 (99%)	596 (93%)	38 (6%)	6 (1%)	21	9

All (6) Ramachandran outliers are listed below:

Mol	Chain	Res	Type
1	B	57	GLU
1	A	50	PRO
1	B	134	GLU
1	A	201	GLY
1	B	50	PRO
1	B	201	GLY

### 5.3.2 Protein sidechains [i](#)

In the following table, the Percentiles column shows the percent sidechain outliers of the chain as a percentile score with respect to all X-ray entries followed by that with respect to entries of similar resolution.

The Analysed column shows the number of residues for which the sidechain conformation was analysed, and the total number of residues.

Mol	Chain	Analysed	Rotameric	Outliers	Percentiles	
1	A	251/257 (98%)	239 (95%)	12 (5%)	31	19
1	B	251/257 (98%)	238 (95%)	13 (5%)	29	17
All	All	502/514 (98%)	477 (95%)	25 (5%)	30	18

All (25) residues with a non-rotameric sidechain are listed below:

Mol	Chain	Res	Type
1	A	1	THR
1	A	27	LEU
1	A	42	ASP
1	A	65	GLU
1	A	73	ARG
1	A	75	VAL
1	A	85	ASP
1	A	101	MET
1	A	152	VAL
1	A	222	PRO
1	A	279	LYS
1	A	296	SER
1	B	1	THR
1	B	36	VAL
1	B	42	ASP
1	B	44	LYS
1	B	64	ILE
1	B	72	ILE
1	B	81	SER
1	B	95	ASP
1	B	106	LYS
1	B	111	GLU
1	B	152	VAL
1	B	222	PRO
1	B	321	ILE

Some sidechains can be flipped to improve hydrogen bonding and reduce clashes. All (10) such sidechains are listed below:

Mol	Chain	Res	Type
1	A	82	HIS
1	A	83	HIS
1	A	270	GLN
1	B	69	ASN
1	B	82	HIS

*Continued on next page...*



*Continued from previous page...*

Mol	Chain	Res	Type
1	B	83	HIS
1	B	107	GLN
1	B	172	GLN
1	B	219	GLN
1	B	270	GLN

### 5.3.3 RNA ⓘ

There are no RNA molecules in this entry.

## 5.4 Non-standard residues in protein, DNA, RNA chains ⓘ

2 non-standard protein/DNA/RNA residues are modelled in this entry.

In the following table, the Counts columns list the number of bonds (or angles) for which Mogul statistics could be retrieved, the number of bonds (or angles) that are observed in the model and the number of bonds (or angles) that are defined in the chemical component dictionary. The Link column lists molecule types, if any, to which the group is linked. The Z score for a bond length (or angle) is the number of standard deviations the observed value is removed from the expected value. A bond length (or angle) with  $|Z| > 2$  is considered an outlier worth inspection. RMSZ is the root-mean-square of all Z scores of the bond lengths (or angles).

Mol	Type	Chain	Res	Link	Bond lengths			Bond angles		
					Counts	RMSZ	$\# Z  > 2$	Counts	RMSZ	$\# Z  > 2$
1	CME	A	133	1	8,9,10	0.75	0	6,9,11	1.19	0
1	CME	B	133	1	8,9,10	0.72	0	6,9,11	1.84	2 (33%)

In the following table, the Chirals column lists the number of chiral outliers, the number of chiral centers analysed, the number of these observed in the model and the number defined in the chemical component dictionary. Similar counts are reported in the Torsion and Rings columns. '-' means no outliers of that kind were identified.

Mol	Type	Chain	Res	Link	Chirals	Torsions	Rings
1	CME	A	133	1	-	0/5/8/10	0/0/0/0
1	CME	B	133	1	-	0/5/8/10	0/0/0/0

There are no bond length outliers.

All (2) bond angle outliers are listed below:

Mol	Chain	Res	Type	Atoms	Z	Observed(°)	Ideal(°)
1	B	133	CME	O-C-CA	-2.21	119.73	125.49

*Continued on next page...*

*Continued from previous page...*

Mol	Chain	Res	Type	Atoms	Z	Observed(°)	Ideal(°)
1	B	133	CME	CB-SG-SD	3.60	110.97	103.95

There are no chirality outliers.

There are no torsion outliers.

There are no ring outliers.

2 monomers are involved in 5 short contacts:

Mol	Chain	Res	Type	Clashes	Symm-Clashes
1	A	133	CME	3	0
1	B	133	CME	2	0

## 5.5 Carbohydrates

There are no carbohydrates in this entry.

## 5.6 Ligand geometry

Of 11 ligands modelled in this entry, 4 are monoatomic - leaving 7 for Mogul analysis.

In the following table, the Counts columns list the number of bonds (or angles) for which Mogul statistics could be retrieved, the number of bonds (or angles) that are observed in the model and the number of bonds (or angles) that are defined in the chemical component dictionary. The Link column lists molecule types, if any, to which the group is linked. The Z score for a bond length (or angle) is the number of standard deviations the observed value is removed from the expected value. A bond length (or angle) with  $|Z| > 2$  is considered an outlier worth inspection. RMSZ is the root-mean-square of all Z scores of the bond lengths (or angles).

Mol	Type	Chain	Res	Link	Bond lengths			Bond angles		
					Counts	RMSZ	$\# Z  > 2$	Counts	RMSZ	$\# Z  > 2$
4	4OX	A	350	1	7,13,14	0.78	0	8,14,16	0.41	0
5	GOL	A	901	-	5,5,5	2.15	2 (40%)	5,5,5	1.43	1 (20%)
5	GOL	A	902	-	5,5,5	1.56	2 (40%)	5,5,5	1.09	0
5	GOL	A	904	-	5,5,5	1.76	2 (40%)	5,5,5	1.37	0
5	GOL	A	905	-	5,5,5	1.88	2 (40%)	5,5,5	1.09	0
4	4OX	B	350	1	7,13,14	0.42	0	8,14,16	0.68	0
5	GOL	B	903	-	5,5,5	1.36	0	5,5,5	0.90	0

In the following table, the Chirals column lists the number of chiral outliers, the number of chiral centers analysed, the number of these observed in the model and the number defined in the chemical component dictionary. Similar counts are reported in the Torsion and Rings columns. '-' means

no outliers of that kind were identified.

Mol	Type	Chain	Res	Link	Chirals	Torsions	Rings
4	4OX	A	350	1	-	0/7/11/13	0/0/0/0
5	GOL	A	901	-	-	0/4/4/4	0/0/0/0
5	GOL	A	902	-	-	0/4/4/4	0/0/0/0
5	GOL	A	904	-	-	0/4/4/4	0/0/0/0
5	GOL	A	905	-	-	0/4/4/4	0/0/0/0
4	4OX	B	350	1	-	0/7/11/13	0/0/0/0
5	GOL	B	903	-	-	0/4/4/4	0/0/0/0

All (8) bond length outliers are listed below:

Mol	Chain	Res	Type	Atoms	Z	Observed(Å)	Ideal(Å)
5	A	902	GOL	C1-C2	2.03	1.60	1.52
5	A	902	GOL	C3-C2	2.04	1.60	1.52
5	A	904	GOL	C3-C2	2.17	1.60	1.52
5	A	905	GOL	C3-C2	2.29	1.61	1.52
5	A	904	GOL	C1-C2	2.41	1.61	1.52
5	A	905	GOL	C1-C2	2.49	1.61	1.52
5	A	901	GOL	C1-C2	2.84	1.63	1.52
5	A	901	GOL	C3-C2	3.12	1.64	1.52

All (1) bond angle outliers are listed below:

Mol	Chain	Res	Type	Atoms	Z	Observed(°)	Ideal(°)
5	A	901	GOL	C3-C2-C1	2.30	120.12	111.12

There are no chirality outliers.

There are no torsion outliers.

There are no ring outliers.

2 monomers are involved in 5 short contacts:

Mol	Chain	Res	Type	Clashes	Symm-Clashes
4	B	350	4OX	4	0
5	B	903	GOL	1	0

## 5.7 Other polymers

There are no such residues in this entry.

## 5.8 Polymer linkage issues ⓘ

There are no chain breaks in this entry.

## 6 Fit of model and data [i](#)

### 6.1 Protein, DNA and RNA chains [i](#)

EDS was not executed - this section will therefore be empty.

### 6.2 Non-standard residues in protein, DNA, RNA chains [i](#)

EDS was not executed - this section will therefore be empty.

### 6.3 Carbohydrates [i](#)

EDS was not executed - this section will therefore be empty.

### 6.4 Ligands [i](#)

EDS was not executed - this section will therefore be empty.

### 6.5 Other polymers [i](#)

EDS was not executed - this section will therefore be empty.