



wwPDB X-ray Structure Validation Summary Report ⓘ

Oct 20, 2016 – 09:24 AM EDT

PDB ID : 5L7F
Title : Crystal structure of MMP12 mutant K421A in complex with RXP470.1 conjugated with fluorophore Cy5,5 in space group P21.
Authors : Tepshi, L.; Bordenave, T.; Rouanet-Mehouas, C.; Devel, L.; Dive, V.; Stura, E.A.
Deposited on : 2016-06-03
Resolution : 1.80 Å(reported)

This is a wwPDB X-ray Structure Validation Summary Report for a publicly released PDB entry.

We welcome your comments at validation@mail.wwpdb.org

A user guide is available at

<http://wwpdb.org/validation/2016/XrayValidationReportHelp>

with specific help available everywhere you see the ⓘ symbol.

The following versions of software and data (see [references ⓘ](#)) were used in the production of this report:

MolProbity : 4.02b-467
Mogul : 1.7.1 (RC1), CSD as537be (2016)
Xtriage (Phenix) : 1.9-1692
EDS : rb-20027939
Percentile statistics : 20151230.v01 (using entries in the PDB archive December 30th 2015)
Refmac : 5.8.0135
CCP4 : 6.5.0
Ideal geometry (proteins) : Engh & Huber (2001)
Ideal geometry (DNA, RNA) : Parkinson et al. (1996)
Validation Pipeline (wwPDB-VP) : rb-20027939

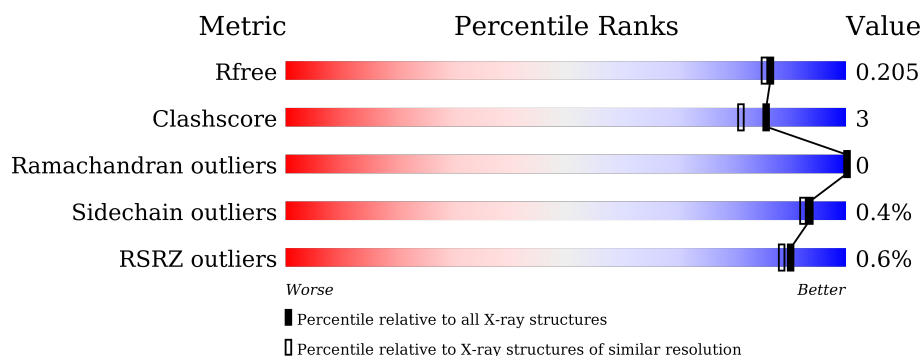
1 Overall quality at a glance

The following experimental techniques were used to determine the structure:

X-RAY DIFFRACTION

The reported resolution of this entry is 1.80 Å.

Percentile scores (ranging between 0-100) for global validation metrics of the entry are shown in the following graphic. The table shows the number of entries on which the scores are based.



Metric	Whole archive (#Entries)	Similar resolution (#Entries, resolution range(Å))
R_{free}	91344	4533 (1.80-1.80)
Clashscore	102246	5383 (1.80-1.80)
Ramachandran outliers	100387	5320 (1.80-1.80)
Sidechain outliers	100360	5319 (1.80-1.80)
RSRZ outliers	91569	4547 (1.80-1.80)

The table below summarises the geometric issues observed across the polymeric chains and their fit to the electron density. The red, orange, yellow and green segments on the lower bar indicate the fraction of residues that contain outliers for ≥ 3 , 2, 1 and 0 types of geometric quality criteria. A grey segment represents the fraction of residues that are not modelled. The numeric value for each fraction is indicated below the corresponding segment, with a dot representing fractions $\leq 5\%$. The upper red bar (where present) indicates the fraction of residues that have poor fit to the electron density. The numeric value is given above the bar.

Mol	Chain	Length	Quality of chain
1	A	159	<div> <div style="width: 100%; height: 10px; background: linear-gradient(to right, red, orange, yellow, green, grey);"></div> <div style="display: flex; justify-content: space-between; padding: 0 5px;"> % 91% 8% .. </div> </div>
1	B	159	<div> <div style="width: 100%; height: 10px; background: linear-gradient(to right, red, orange, yellow, green, grey);"></div> <div style="display: flex; justify-content: space-between; padding: 0 5px;"> % 96% .. </div> </div>

The following table lists non-polymeric compounds, carbohydrate monomers and non-standard residues in protein, DNA, RNA chains that are outliers for geometric or electron-density-fit criteria:

Mol	Type	Chain	Res	Chirality	Geometry	Clashes	Electron density
4	6PJ	A	306	-	-	-	X
4	6PJ	B	309	-	-	-	X
6	EDO	A	309	-	-	-	X

2 Entry composition

There are 10 unique types of molecules in this entry. The entry contains 3243 atoms, of which 0 are hydrogens and 0 are deuteriums.

In the tables below, the ZeroOcc column contains the number of atoms modelled with zero occupancy, the AltConf column contains the number of residues with at least one atom in alternate conformation and the Trace column contains the number of residues modelled with at most 2 atoms.

- Molecule 1 is a protein called Macrophage metalloelastase.

Mol	Chain	Residues	Atoms					ZeroOcc	AltConf	Trace
1	A	158	Total	C	N	O	S	0	11	0
			1312	832	233	243	4			
1	B	158	Total	C	N	O	S	0	7	0
			1281	817	221	239	4			

There are 6 discrepancies between the modelled and reference sequences:

Chain	Residue	Modelled	Actual	Comment	Reference
A	105	MET	-	initiating methionine	UNP P39900
A	171	ASP	PHE	engineered mutation	UNP P39900
A	241	ALA	LYS	engineered mutation	UNP P39900
B	105	MET	-	initiating methionine	UNP P39900
B	171	ASP	PHE	engineered mutation	UNP P39900
B	241	ALA	LYS	engineered mutation	UNP P39900

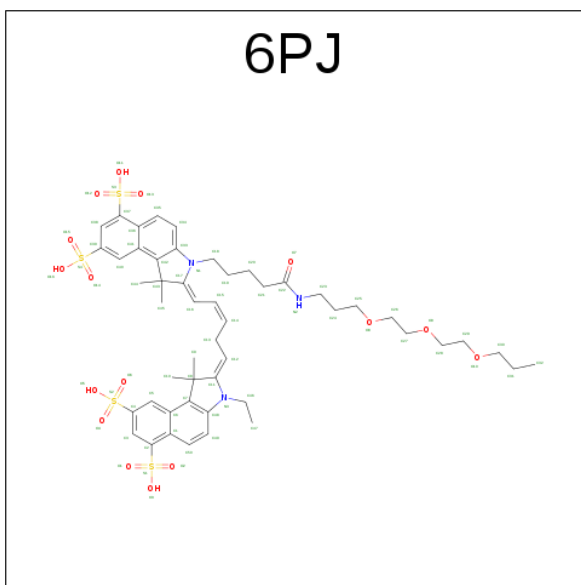
- Molecule 2 is ZINC ION (three-letter code: ZN) (formula: Zn).

Mol	Chain	Residues	Atoms		ZeroOcc	AltConf
2	B	2	Total	Zn	0	0
			2	2		
2	A	2	Total	Zn	0	0
			2	2		

- Molecule 3 is CALCIUM ION (three-letter code: CA) (formula: Ca).

Mol	Chain	Residues	Atoms		ZeroOcc	AltConf
3	B	3	Total	Ca	0	0
			3	3		
3	A	3	Total	Ca	0	0
			3	3		

- Molecule 4 is CY5.5-PEG2 (three-letter code: 6PJ) (formula: C₅₀H₆₅N₃O₁₆S₄).

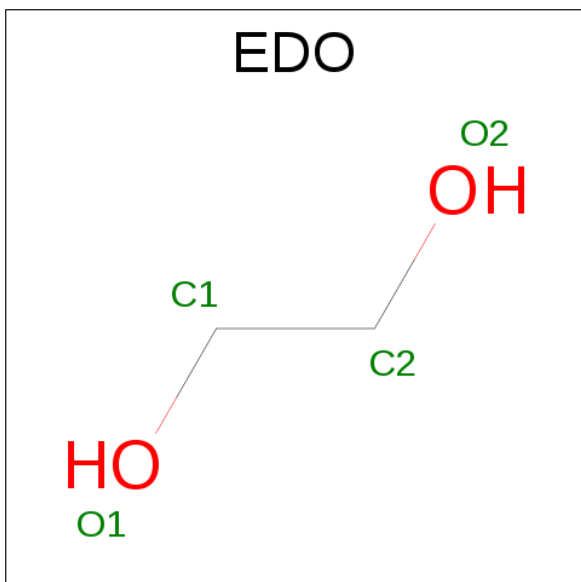


Mol	Chain	Residues	Atoms					ZeroOcc	AltConf
4	A	1	Total	C	N	O	S	0	0
			73	50	3	16	4		
4	B	1	Total	C	N	O	S	0	0
			73	50	3	16	4		

- Molecule 5 is BROMIDE ION (three-letter code: BR) (formula: Br).

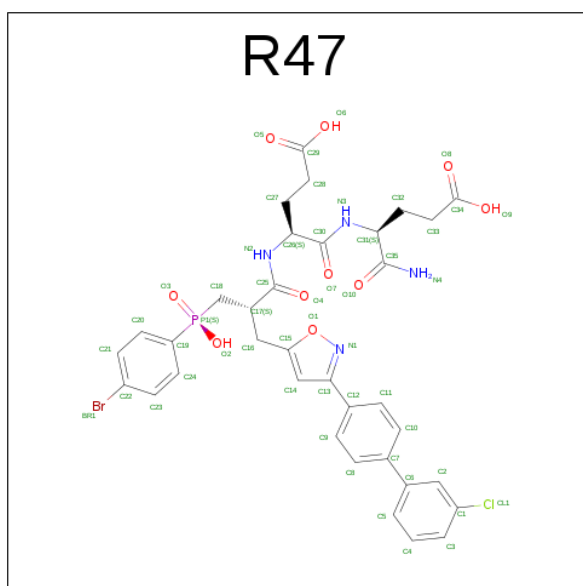
Mol	Chain	Residues	Atoms		ZeroOcc	AltConf
5	A	1	Total	Br	0	0
			1	1		

- Molecule 6 is 1,2-ETHANEDIOL (three-letter code: EDO) (formula: C₂H₆O₂).



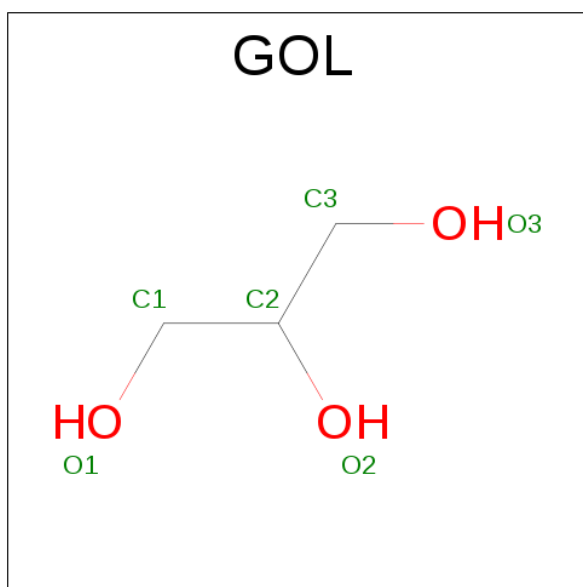
Mol	Chain	Residues	Atoms			ZeroOcc	AltConf
6	A	1	Total	C	O	0	0
			4	2	2		
6	A	1	Total	C	O	0	0
			4	2	2		
6	B	1	Total	C	O	0	0
			4	2	2		

- Molecule 7 is N-[(2S)-3-[(S)-(4-bromophenyl)(hydroxy)phosphoryl]-2-{[3-(3'-chlorobiphenyl-4-yl)-1,2-oxazol-5-yl]methyl}propanoyl]-L-alpha-glutamyl-L-alpha-glutamine (three-letter code: R47) (formula: C₃₅H₃₅BrClN₄O₁₀P).



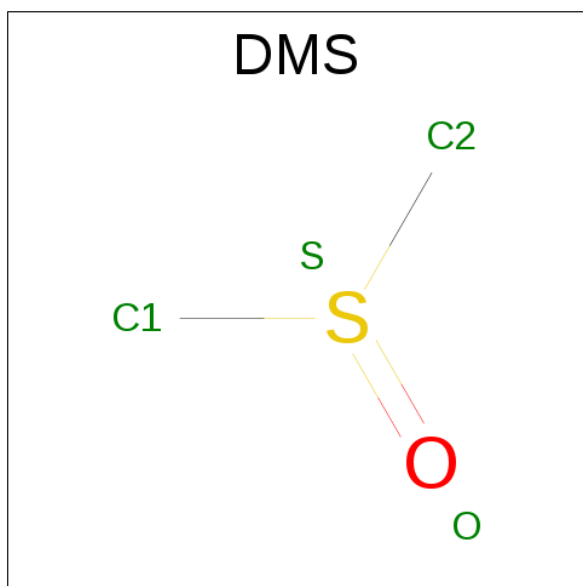
Mol	Chain	Residues	Atoms							ZeroOcc	AltConf
7	A	1	Total	Br	C	Cl	N	O	P	0	0
			52	1	35	1	4	10	1		
7	B	1	Total	Br	C	Cl	N	O	P	0	0
			52	1	35	1	4	10	1		

- Molecule 8 is GLYCEROL (three-letter code: GOL) (formula: C₃H₈O₃).



Mol	Chain	Residues	Atoms			ZeroOcc	AltConf
8	B	1	Total	C	O	0	0
			6	3	3		

- Molecule 9 is DIMETHYL SULFOXIDE (three-letter code: DMS) (formula: C_2H_6OS).



Mol	Chain	Residues	Atoms				ZeroOcc	AltConf
9	B	1	Total	C	O	S	0	0
			4	2	1	1		

- Molecule 10 is water.

Mol	Chain	Residues	Atoms		ZeroOcc	AltConf
10	A	172	Total 173	O 173	0	1
10	B	192	Total 194	O 194	0	2

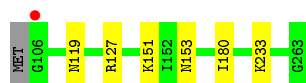
3 Residue-property plots [i](#)

These plots are drawn for all protein, RNA and DNA chains in the entry. The first graphic for a chain summarises the proportions of errors displayed in the second graphic. The second graphic shows the sequence view annotated by issues in geometry and electron density. Residues are color-coded according to the number of geometric quality criteria for which they contain at least one outlier: green = 0, yellow = 1, orange = 2 and red = 3 or more. A red dot above a residue indicates a poor fit to the electron density ($\text{RSRZ} > 2$). Stretches of 2 or more consecutive residues without any outlier are shown as a green connector. Residues present in the sample, but not in the model, are shown in grey.

- Molecule 1: Macrophage metalloelastase



- Molecule 1: Macrophage metalloelastase



4 Data and refinement statistics

Property	Value	Source
Space group	P 1 21 1	Depositor
Cell constants a, b, c, α , β , γ	48.92Å 70.37Å 52.22Å 90.00° 104.61° 90.00°	Depositor
Resolution (Å)	47.34 – 1.80 47.34 – 1.80	Depositor EDS
% Data completeness (in resolution range)	99.3 (47.34-1.80) 99.3 (47.34-1.80)	Depositor EDS
R_{merge}	0.14	Depositor
R_{sym}	0.11	Depositor
$\langle I/\sigma(I) \rangle$ ¹	2.08 (at 1.79Å)	Xtriage
Refinement program	REFMAC 5.8.0135	Depositor
R, R_{free}	0.176 , 0.195 0.188 , 0.205	Depositor DCC
R_{free} test set	1581 reflections (5.26%)	DCC
Wilson B-factor (Å ²)	14.3	Xtriage
Anisotropy	0.249	Xtriage
Bulk solvent k_{sol} (e/Å ³), B_{sol} (Å ²)	0.33 , 53.0	EDS
L-test for twinning ²	$\langle L \rangle = 0.49$, $\langle L^2 \rangle = 0.33$	Xtriage
Estimated twinning fraction	No twinning to report.	Xtriage
F_o, F_c correlation	0.95	EDS
Total number of atoms	3243	wwPDB-VP
Average B, all atoms (Å ²)	22.0	wwPDB-VP

Xtriage's analysis on translational NCS is as follows: *The largest off-origin peak in the Patterson function is 7.70% of the height of the origin peak. No significant pseudotranslation is detected.*

¹Intensities estimated from amplitudes.

²Theoretical values of $\langle |L| \rangle$, $\langle L^2 \rangle$ for acentric reflections are 0.5, 0.333 respectively for untwinned datasets, and 0.375, 0.2 for perfectly twinned datasets.

5 Model quality [i](#)

5.1 Standard geometry [i](#)

Bond lengths and bond angles in the following residue types are not validated in this section: GOL, ZN, CA, EDO, R47, DMS, BR, 6PJ

The Z score for a bond length (or angle) is the number of standard deviations the observed value is removed from the expected value. A bond length (or angle) with $|Z| > 5$ is considered an outlier worth inspection. RMSZ is the root-mean-square of all Z scores of the bond lengths (or angles).

Mol	Chain	Bond lengths		Bond angles	
		RMSZ	$\# Z > 5$	RMSZ	$\# Z > 5$
1	A	0.97	0/1365	0.76	3/1847 (0.2%)
1	B	0.94	0/1325	0.74	0/1792
All	All	0.96	0/2690	0.75	3/3639 (0.1%)

There are no bond length outliers.

All (3) bond angle outliers are listed below:

Mol	Chain	Res	Type	Atoms	Z	Observed(°)	Ideal(°)
1	A	231	ASP	CB-CG-OD1	5.72	123.45	118.30
1	A	165	ARG	NE-CZ-NH2	5.28	122.94	120.30
1	A	231	ASP	CB-CG-OD2	-5.07	113.74	118.30

There are no chirality outliers.

There are no planarity outliers.

5.2 Too-close contacts [i](#)

In the following table, the Non-H and H(model) columns list the number of non-hydrogen atoms and hydrogen atoms in the chain respectively. The H(added) column lists the number of hydrogen atoms added and optimized by MolProbity. The Clashes column lists the number of clashes within the asymmetric unit, whereas Symm-Clashes lists symmetry related clashes.

Mol	Chain	Non-H	H(model)	H(added)	Clashes	Symm-Clashes
1	A	1312	0	1242	8	0
1	B	1281	0	1207	6	0
2	A	2	0	0	0	0
2	B	2	0	0	0	0
3	A	3	0	0	0	0
3	B	3	0	0	0	0

Continued on next page...

Continued from previous page...

Mol	Chain	Non-H	H(model)	H(added)	Clashes	Symm-Clashes
4	A	73	0	0	1	0
4	B	73	0	0	0	0
5	A	1	0	0	0	0
6	A	8	0	12	0	0
6	B	4	0	6	0	0
7	A	52	0	31	2	0
7	B	52	0	31	1	0
8	B	6	0	8	0	0
9	B	4	0	6	0	0
10	A	173	0	0	2	1
10	B	194	0	0	4	1
All	All	3243	0	2543	15	2

The all-atom clashscore is defined as the number of clashes found per 1000 atoms (including hydrogen atoms). The all-atom clashscore for this structure is 3.

The worst 5 of 15 close contacts within the same asymmetric unit are listed below, sorted by their clash magnitude.

Atom-1	Atom-2	Interatomic distance (Å)	Clash overlap (Å)
4:A:306:6PJ:O1	10:A:401:HOH:O	2.13	0.66
1:B:233:LYS:NZ	10:B:405:HOH:O	2.32	0.63
1:A:121:TYR:CE2	1:A:127[B]:ARG:HG3	2.39	0.57
1:A:249:ARG:NH1	10:A:405:HOH:O	2.37	0.57
1:B:151[B]:LYS:NZ	1:B:153:ASN:OD1	2.43	0.52

All (2) symmetry-related close contacts are listed below. The label for Atom-2 includes the symmetry operator and encoded unit-cell translations to be applied.

Atom-1	Atom-2	Interatomic distance (Å)	Clash overlap (Å)
10:A:409:HOH:O	10:A:531:HOH:O[2_546]	2.10	0.10
10:B:523:HOH:O	10:B:560:HOH:O[2_647]	2.15	0.05

5.3 Torsion angles [i](#)

5.3.1 Protein backbone [i](#)

In the following table, the Percentiles column shows the percent Ramachandran outliers of the chain as a percentile score with respect to all X-ray entries followed by that with respect to entries of similar resolution.

The Analysed column shows the number of residues for which the backbone conformation was analysed, and the total number of residues.

Mol	Chain	Analysed	Favoured	Allowed	Outliers	Percentiles	
1	A	167/159 (105%)	161 (96%)	6 (4%)	0	100	100
1	B	162/159 (102%)	158 (98%)	4 (2%)	0	100	100
All	All	329/318 (104%)	319 (97%)	10 (3%)	0	100	100

There are no Ramachandran outliers to report.

5.3.2 Protein sidechains ⓘ

In the following table, the Percentiles column shows the percent sidechain outliers of the chain as a percentile score with respect to all X-ray entries followed by that with respect to entries of similar resolution.

The Analysed column shows the number of residues for which the sidechain conformation was analysed, and the total number of residues.

Mol	Chain	Analysed	Rotameric	Outliers	Percentiles	
1	A	137/127 (108%)	136 (99%)	1 (1%)	88	86
1	B	132/127 (104%)	132 (100%)	0	100	100
All	All	269/254 (106%)	268 (100%)	1 (0%)	93	92

All (1) residues with a non-rotameric sidechain are listed below:

Mol	Chain	Res	Type
1	A	165	ARG

Some sidechains can be flipped to improve hydrogen bonding and reduce clashes. There are no such sidechains identified.

5.3.3 RNA ⓘ

There are no RNA molecules in this entry.

5.4 Non-standard residues in protein, DNA, RNA chains ⓘ

There are no non-standard protein/DNA/RNA residues in this entry.

5.5 Carbohydrates ⓘ

There are no carbohydrates in this entry.

5.6 Ligand geometry ⓘ

Of 20 ligands modelled in this entry, 11 are monoatomic - leaving 9 for Mogul analysis.

In the following table, the Counts columns list the number of bonds (or angles) for which Mogul statistics could be retrieved, the number of bonds (or angles) that are observed in the model and the number of bonds (or angles) that are defined in the chemical component dictionary. The Link column lists molecule types, if any, to which the group is linked. The Z score for a bond length (or angle) is the number of standard deviations the observed value is removed from the expected value. A bond length (or angle) with $|Z| > 2$ is considered an outlier worth inspection. RMSZ is the root-mean-square of all Z scores of the bond lengths (or angles).

Mol	Type	Chain	Res	Link	Bond lengths			Bond angles		
					Counts	RMSZ	$\# Z > 2$	Counts	RMSZ	$\# Z > 2$
4	6PJ	A	306	7	78,78,78	3.34	20 (25%)	103,118,118	1.81	23 (22%)
6	EDO	A	308	-	3,3,3	0.32	0	2,2,2	0.42	0
6	EDO	A	309	-	3,3,3	0.39	0	2,2,2	0.80	0
7	R47	A	310	2,4	42,55,55	1.18	4 (9%)	58,77,77	1.26	6 (10%)
7	R47	B	306	2,4	42,55,55	1.27	6 (14%)	58,77,77	1.21	5 (8%)
6	EDO	B	307	-	3,3,3	0.41	0	2,2,2	0.31	0
8	GOL	B	308	-	5,5,5	0.36	0	5,5,5	0.53	0
4	6PJ	B	309	7	78,78,78	3.25	17 (21%)	103,118,118	2.71	21 (20%)
9	DMS	B	310	-	3,3,3	0.53	0	3,3,3	0.64	0

In the following table, the Chirals column lists the number of chiral outliers, the number of chiral centers analysed, the number of these observed in the model and the number defined in the chemical component dictionary. Similar counts are reported in the Torsion and Rings columns. '-' means no outliers of that kind were identified.

Mol	Type	Chain	Res	Link	Chirals	Torsions	Rings
4	6PJ	A	306	7	-	0/55/95/95	0/6/6/6
6	EDO	A	308	-	-	0/1/1/1	0/0/0/0
6	EDO	A	309	-	-	0/1/1/1	0/0/0/0
7	R47	A	310	2,4	-	0/47/53/53	0/3/4/4
7	R47	B	306	2,4	-	0/47/53/53	0/3/4/4
6	EDO	B	307	-	-	0/1/1/1	0/0/0/0
8	GOL	B	308	-	-	0/4/4/4	0/0/0/0
4	6PJ	B	309	7	-	2/55/95/95	0/6/6/6
9	DMS	B	310	-	-	0/0/0/0	0/0/0/0

The worst 5 of 47 bond length outliers are listed below:

Mol	Chain	Res	Type	Atoms	Z	Observed(Å)	Ideal(Å)
4	A	306	6PJ	C37-S3	-12.26	1.61	1.79
4	B	309	6PJ	C37-S3	-11.27	1.63	1.79
4	A	306	6PJ	C2-S1	-10.48	1.64	1.79
4	B	309	6PJ	C39-S4	-8.56	1.60	1.76
4	A	306	6PJ	C39-S4	-8.34	1.60	1.76

The worst 5 of 55 bond angle outliers are listed below:

Mol	Chain	Res	Type	Atoms	Z	Observed(°)	Ideal(°)
4	B	309	6PJ	C43-C17-C16	-15.10	115.83	129.22
4	A	306	6PJ	C43-C17-C16	-4.55	125.19	129.22
4	B	309	6PJ	C34-C33-C42	-4.03	118.07	122.86
4	A	306	6PJ	C8-C7-C6	-3.92	126.77	131.36
7	B	306	R47	C35-C31-N3	-3.79	99.63	109.88

There are no chirality outliers.

All (2) torsion outliers are listed below:

Mol	Chain	Res	Type	Atoms
4	B	309	6PJ	C15-C16-C17-C43
4	B	309	6PJ	C15-C16-C17-N1

There are no ring outliers.

3 monomers are involved in 4 short contacts:

Mol	Chain	Res	Type	Clashes	Symm-Clashes
4	A	306	6PJ	1	0
7	A	310	R47	2	0
7	B	306	R47	1	0

5.7 Other polymers [i](#)

There are no such residues in this entry.

5.8 Polymer linkage issues [i](#)

There are no chain breaks in this entry.

6 Fit of model and data [i](#)

6.1 Protein, DNA and RNA chains [i](#)

In the following table, the column labelled ‘#RSRZ> 2’ contains the number (and percentage) of RSRZ outliers, followed by percent RSRZ outliers for the chain as percentile scores relative to all X-ray entries and entries of similar resolution. The OWAB column contains the minimum, median, 95th percentile and maximum values of the occupancy-weighted average B-factor per residue. The column labelled ‘Q< 0.9’ lists the number of (and percentage) of residues with an average occupancy less than 0.9.

Mol	Chain	Analysed	<RSRZ>	#RSRZ>2	OWAB(Å ²)	Q<0.9
1	A	158/159 (99%)	-0.38	1 (0%) 90 88	10, 16, 34, 46	0
1	B	158/159 (99%)	-0.46	1 (0%) 90 88	10, 16, 32, 48	0
All	All	316/318 (99%)	-0.42	2 (0%) 90 88	10, 16, 33, 48	0

All (2) RSRZ outliers are listed below:

Mol	Chain	Res	Type	RSRZ
1	A	263	GLY	2.9
1	B	106	GLY	2.2

6.2 Non-standard residues in protein, DNA, RNA chains [i](#)

There are no non-standard protein/DNA/RNA residues in this entry.

6.3 Carbohydrates [i](#)

There are no carbohydrates in this entry.

6.4 Ligands [i](#)

In the following table, the Atoms column lists the number of modelled atoms in the group and the number defined in the chemical component dictionary. LLDF column lists the quality of electron density of the group with respect to its neighbouring residues in protein, DNA or RNA chains. The B-factors column lists the minimum, median, 95th percentile and maximum values of B factors of atoms in the group. The column labelled ‘Q< 0.9’ lists the number of atoms with occupancy less than 0.9.

Mol	Type	Chain	Res	Atoms	RSCC	RSR	LLDF	B-factors(Å ²)	Q<0.9
4	6PJ	A	306	73/73	0.80	0.25	6.96	30,81,111,130	0

Continued on next page...

Continued from previous page...

Mol	Type	Chain	Res	Atoms	RSCC	RSR	LLDF	B-factors(\AA^2)	Q<0.9
4	6PJ	B	309	73/73	0.86	0.24	4.87	31,60,94,97	0
6	EDO	A	309	4/4	0.91	0.13	2.99	40,43,44,52	0
6	EDO	B	307	4/4	0.93	0.09	1.95	31,34,37,41	0
3	CA	A	305	1/1	0.99	0.09	1.37	16,16,16,16	0
7	R47	B	306	52/52	0.95	0.09	0.68	10,17,36,52	1
7	R47	A	310	52/52	0.95	0.09	0.56	11,16,37,42	1
3	CA	B	305	1/1	1.00	0.07	-0.46	15,15,15,15	0
3	CA	A	304	1/1	1.00	0.08	-0.51	15,15,15,15	0
3	CA	B	304	1/1	0.99	0.06	-1.53	15,15,15,15	0
2	ZN	B	302	1/1	1.00	0.05	-2.43	12,12,12,12	0
3	CA	A	303	1/1	1.00	0.04	-3.18	15,15,15,15	0
3	CA	B	303	1/1	1.00	0.04	-3.47	14,14,14,14	0
2	ZN	A	301	1/1	1.00	0.05	-3.63	12,12,12,12	0
2	ZN	B	301	1/1	1.00	0.05	-4.32	12,12,12,12	0
2	ZN	A	302	1/1	1.00	0.05	-8.73	12,12,12,12	0
9	DMS	B	310	4/4	0.96	0.10	-	48,51,51,53	0
8	GOL	B	308	6/6	0.89	0.13	-	32,38,43,44	0
5	BR	A	307	1/1	0.85	0.06	-	81,81,81,81	0
6	EDO	A	308	4/4	0.89	0.15	-	36,41,43,48	0

6.5 Other polymers [i](#)

There are no such residues in this entry.