



Full wwPDB X-ray Structure Validation Report ⓘ

Feb 1, 2016 – 10:27 AM GMT

PDB ID : 3M09
Title : F98Y TMP-resistant Dihydrofolate Reductase from *Staphylococcus aureus* with inhibitor RAB1
Authors : Bourne, C.R.; Barrow, W.W.
Deposited on : 2010-03-02
Resolution : 2.01 Å(reported)

This is a Full wwPDB X-ray Structure Validation Report for a publicly released PDB entry.
We welcome your comments at validation@mail.wwpdb.org
A user guide is available at
<http://wwpdb.org/validation/2016/XrayValidationReportHelp>
with specific help available everywhere you see the ⓘ symbol.

The following versions of software and data (see [references ⓘ](#)) were used in the production of this report:

MolProbity : 4.02b-467
Mogul : 1.7 (RC4), CSD as536be (2015)
Xtriage (Phenix) : 1.9-1692
EDS : rb-20026688
Percentile statistics : 20151230.v01 (using entries in the PDB archive December 30th 2015)
Refmac : 5.8.0135
CCP4 : 6.5.0
Ideal geometry (proteins) : Engh & Huber (2001)
Ideal geometry (DNA, RNA) : Parkinson et al. (1996)
Validation Pipeline (wwPDB-VP) : trunk26865

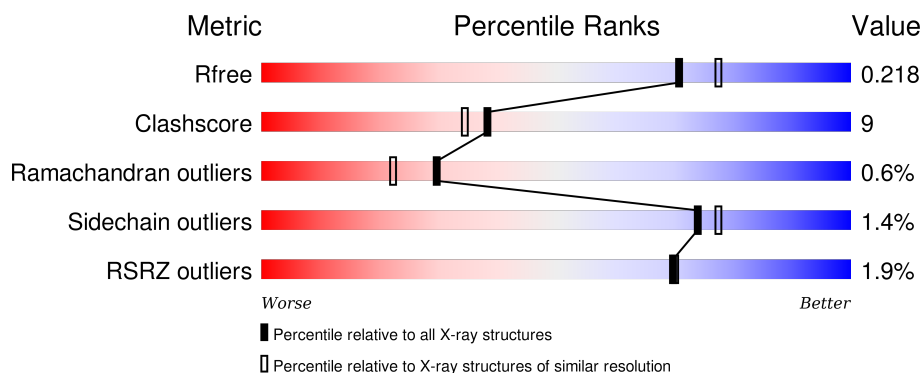
1 Overall quality at a glance

The following experimental techniques were used to determine the structure:

X-RAY DIFFRACTION


The reported resolution of this entry is 2.01 Å.

Percentile scores (ranging between 0-100) for global validation metrics of the entry are shown in the following graphic. The table shows the number of entries on which the scores are based.



Metric	Whole archive (#Entries)	Similar resolution (#Entries, resolution range(Å))
R_{free}	91344	6249 (2.00-2.00)
Clashscore	102246	7340 (2.00-2.00)
Ramachandran outliers	100387	7248 (2.00-2.00)
Sidechain outliers	100360	7247 (2.00-2.00)
RSRZ outliers	91569	6262 (2.00-2.00)

The table below summarises the geometric issues observed across the polymeric chains and their fit to the electron density. The red, orange, yellow and green segments on the lower bar indicate the fraction of residues that contain outliers for ≥ 3 , 2, 1 and 0 types of geometric quality criteria. A grey segment represents the fraction of residues that are not modelled. The numeric value for each fraction is indicated below the corresponding segment, with a dot representing fractions $\leq 5\%$. The upper red bar (where present) indicates the fraction of residues that have poor fit to the electron density. The numeric value is given above the bar.

Mol	Chain	Length	Quality of chain
1	A	161	

The following table lists non-polymeric compounds, carbohydrate monomers and non-standard residues in protein, DNA, RNA chains that are outliers for geometric or electron-density-fit criteria:

Mol	Type	Chain	Res	Chirality	Geometry	Clashes	Electron density
2	RAR	A	200[A]	-	-	-	X

Continued on next page...

Continued from previous page...

Mol	Type	Chain	Res	Chirality	Geometry	Clashes	Electron density
2	RAR	A	200[B]	X	-	-	X
4	GOL	A	202	-	-	-	X

2 Entry composition [i](#)

There are 5 unique types of molecules in this entry. The entry contains 2892 atoms, of which 1325 are hydrogens and 0 are deuteriums.

In the tables below, the ZeroOcc column contains the number of atoms modelled with zero occupancy, the AltConf column contains the number of residues with at least one atom in alternate conformation and the Trace column contains the number of residues modelled with at most 2 atoms.

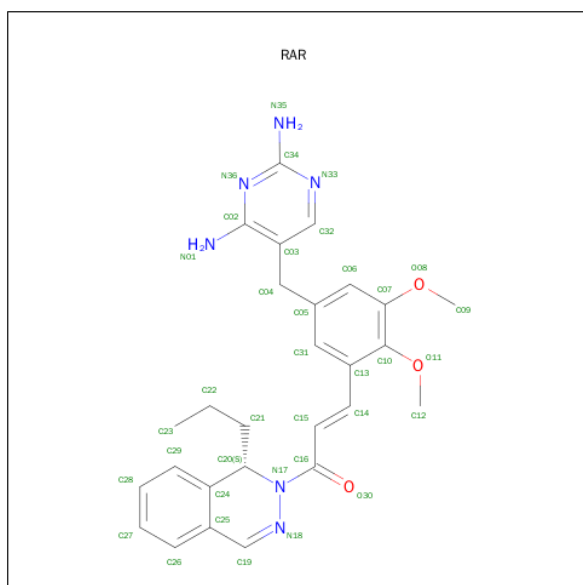
- Molecule 1 is a protein called Dihydrofolate reductase.

Mol	Chain	Residues	Atoms						ZeroOcc	AltConf	Trace
			Total	C	H	N	O	S			
1	A	161	2590	838	1293	220	236	3	0	1	0

There are 5 discrepancies between the modelled and reference sequences:

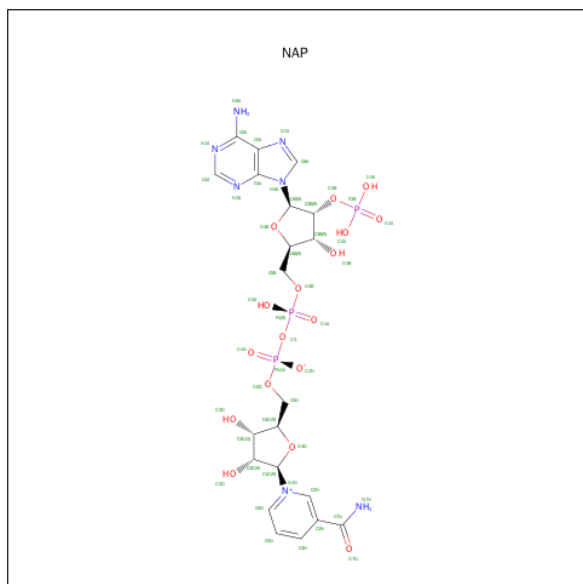
Chain	Residue	Modelled	Actual	Comment	Reference
A	98	TYR	PHE	ENGINEERED	UNP P0A017
A	158	ALA	-	EXPRESSION TAG	UNP P0A017
A	159	VAL	-	EXPRESSION TAG	UNP P0A017
A	160	PRO	-	EXPRESSION TAG	UNP P0A017
A	161	ARG	-	EXPRESSION TAG	UNP P0A017

- Molecule 2 is 5-(3,4-DIMETHOXY-5-{(1E)-3-OXO-3-[(1S)-1-PROPYLPHTHALAZIN-2(1H)-YL]PROP-1-EN-1-YL}BENZYL)PYRIMIDINE-2,4-DIAMINE (three-letter code: RAR) (formula: C₂₇H₃₀N₆O₃).



Mol	Chain	Residues	Atoms				ZeroOcc	AltConf
2	A	1	Total	C	N	O	0	1
			50	38	8	4		

- Molecule 3 is NADP NICOTINAMIDE-ADENINE-DINUCLEOTIDE PHOSPHATE (three-letter code: NAP) (formula: $C_{21}H_{28}N_7O_{17}P_3$).



Mol	Chain	Residues	Atoms						ZeroOcc	AltConf
3	A	1	Total	C	H	N	O	P	0	0
			72	21	24	7	17	3		

- Molecule 4 is GLYCEROL (three-letter code: GOL) (formula: $C_3H_8O_3$).



Mol	Chain	Residues	Atoms				ZeroOcc	AltConf
4	A	1	Total	C	H	O	0	0
			14	3	8	3		


- Molecule 5 is water.

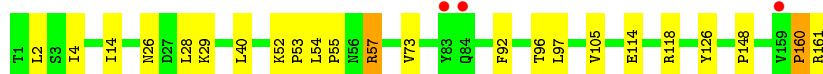
Mol	Chain	Residues	Atoms		ZeroOcc	AltConf
5	A	166	Total	O	0	0
			166	166		

3 Residue-property plots

These plots are drawn for all protein, RNA and DNA chains in the entry. The first graphic for a chain summarises the proportions of errors displayed in the second graphic. The second graphic shows the sequence view annotated by issues in geometry and electron density. Residues are color-coded according to the number of geometric quality criteria for which they contain at least one outlier: green = 0, yellow = 1, orange = 2 and red = 3 or more. A red dot above a residue indicates a poor fit to the electron density ($RSRZ > 2$). Stretches of 2 or more consecutive residues without any outlier are shown as a green connector. Residues present in the sample, but not in the model, are shown in grey.

- Molecule 1: Dihydrofolate reductase

Chain A:  2% 86% 13%



4 Data and refinement statistics

Property	Value	Source
Space group	P 61 2 2	Depositor
Cell constants a, b, c, α , β , γ	79.18Å 79.18Å 107.88Å 90.00° 90.00° 120.00°	Depositor
Resolution (Å)	39.59 – 2.01 39.59 – 2.01	Depositor EDS
% Data completeness (in resolution range)	99.9 (39.59-2.01) 100.0 (39.59-2.01)	Depositor EDS
R_{merge}	(Not available)	Depositor
R_{sym}	0.09	Depositor
$\langle I/\sigma(I) \rangle$ ¹	3.61 (at 2.01Å)	Xtriage
Refinement program	PHENIX (phenix.refine: 1.5_2)	Depositor
R, R_{free}	0.169 , 0.207 0.176 , 0.218	Depositor DCC
R_{free} test set	1391 reflections (11.12%)	DCC
Wilson B-factor (Å ²)	18.7	Xtriage
Anisotropy	0.026	Xtriage
Bulk solvent k_{sol} (e/Å ³), B_{sol} (Å ²)	0.42 , 57.7	EDS
Estimated twinning fraction	No twinning to report.	Xtriage
L-test for twinning ²	$\langle L \rangle = 0.50$, $\langle L^2 \rangle = 0.33$	Xtriage
Outliers	1 of 13904 reflections (0.007%)	Xtriage
F_o, F_c correlation	0.95	EDS
Total number of atoms	2892	wwPDB-VP
Average B, all atoms (Å ²)	20.0	wwPDB-VP

Xtriage's analysis on translational NCS is as follows: *The largest off-origin peak in the Patterson function is 5.84% of the height of the origin peak. No significant pseudotranslation is detected.*

¹Intensities estimated from amplitudes.

²Theoretical values of $\langle |L| \rangle$, $\langle L^2 \rangle$ for acentric reflections are 0.5, 0.375 respectively for untwinned datasets, and 0.333, 0.2 for perfectly twinned datasets.

5 Model quality

5.1 Standard geometry

Bond lengths and bond angles in the following residue types are not validated in this section: GOL, NAP, RAR

The Z score for a bond length (or angle) is the number of standard deviations the observed value is removed from the expected value. A bond length (or angle) with $|Z| > 5$ is considered an outlier worth inspection. RMSZ is the root-mean-square of all Z scores of the bond lengths (or angles).

Mol	Chain	Bond lengths		Bond angles	
		RMSZ	$\# Z > 5$	RMSZ	$\# Z > 5$
1	A	0.28	0/1334	0.47	0/1813

There are no bond length outliers.

There are no bond angle outliers.

There are no chirality outliers.

There are no planarity outliers.

5.2 Too-close contacts

In the following table, the Non-H and H(model) columns list the number of non-hydrogen atoms and hydrogen atoms in the chain respectively. The H(added) column lists the number of hydrogen atoms added and optimized by MolProbity. The Clashes column lists the number of clashes within the asymmetric unit, whereas Symm-Clashes lists symmetry related clashes.

Mol	Chain	Non-H	H(model)	H(added)	Clashes	Symm-Clashes
1	A	1297	1293	1286	24	2
2	A	50	0	23	11	0
3	A	48	24	23	2	0
4	A	6	8	8	0	1
5	A	166	0	0	3	0
All	All	1567	1325	1340	25	2

The all-atom clashscore is defined as the number of clashes found per 1000 atoms (including hydrogen atoms). The all-atom clashscore for this structure is 9.

All (25) close contacts within the same asymmetric unit are listed below, sorted by their clash magnitude.

Atom-1	Atom-2	Interatomic distance (Å)	Clash overlap (Å)
1:A:160:PRO:O	1:A:161:ARG:HB2	1.94	0.67
1:A:57:ARG:NH2	2:A:200[A]:RAR:H26	2.12	0.65
1:A:96:THR:HG23	3:A:201:NAP:O2N	1.99	0.63
1:A:57:ARG:CZ	2:A:200[A]:RAR:H26	2.33	0.59
1:A:28:LEU:HD22	2:A:200[B]:RAR:H14	1.87	0.55
1:A:160:PRO:O	1:A:161:ARG:CB	2.56	0.52
1:A:161:ARG:HD3	5:A:314:HOH:O	2.11	0.50
2:A:200[A]:RAR:H23B	5:A:230:HOH:O	2.12	0.49
1:A:26:ASN:HB3	5:A:293:HOH:O	2.14	0.46
1:A:57:ARG:NH1	2:A:200[A]:RAR:H26	2.30	0.46
1:A:52:LYS:CG	2:A:200[B]:RAR:H26	2.45	0.46
1:A:40:LEU:HD22	1:A:92:PHE:CD2	2.51	0.45
1:A:14:ILE:O	3:A:201:NAP:H2N	2.16	0.45
1:A:53:PRO:HG3	1:A:73:VAL:HG23	1.98	0.45
1:A:29:LYS:HA	2:A:200[A]:RAR:H23A	2.01	0.42
1:A:57:ARG:NH2	2:A:200[A]:RAR:H19	2.34	0.42
1:A:57:ARG:NH2	2:A:200[A]:RAR:C19	2.82	0.42
1:A:54:LEU:HA	1:A:55:PRO:HD3	1.88	0.42
1:A:57:ARG:HH22	2:A:200[A]:RAR:H26	1.84	0.42
1:A:114:GLU:HB2	1:A:148:PRO:HB2	2.01	0.42
1:A:57:ARG:HH22	2:A:200[A]:RAR:H19	1.85	0.41
1:A:2:LEU:HG	1:A:105:VAL:HG12	2.03	0.40
1:A:4:ILE:HG13	1:A:105:VAL:HG11	2.02	0.40

All (2) symmetry-related close contacts are listed below. The label for Atom-2 includes the symmetry operator and encoded unit-cell translations to be applied.

Atom-1	Atom-2	Interatomic distance (Å)	Clash overlap (Å)
1:A:118:ARG:HH21	1:A:118:ARG:HH21[11_555]	1.00	0.60
1:A:126:TYR:H	4:A:202:GOL:H12[6_555]	1.03	0.57

5.3 Torsion angles ⓘ

5.3.1 Protein backbone ⓘ

In the following table, the Percentiles column shows the percent Ramachandran outliers of the chain as a percentile score with respect to all X-ray entries followed by that with respect to entries of similar resolution.

The Analysed column shows the number of residues for which the backbone conformation was analysed, and the total number of residues.

Mol	Chain	Analysed	Favoured	Allowed	Outliers	Percentiles	
1	A	160/161 (99%)	157 (98%)	2 (1%)	1 (1%)	30	22

All (1) Ramachandran outliers are listed below:

Mol	Chain	Res	Type
1	A	160	PRO

5.3.2 Protein sidechains ⓘ

In the following table, the Percentiles column shows the percent sidechain outliers of the chain as a percentile score with respect to all X-ray entries followed by that with respect to entries of similar resolution.

The Analysed column shows the number of residues for which the sidechain conformation was analysed, and the total number of residues.

Mol	Chain	Analysed	Rotameric	Outliers	Percentiles	
1	A	145/147 (99%)	143 (99%)	2 (1%)	74	77

All (2) residues with a non-rotameric sidechain are listed below:

Mol	Chain	Res	Type
1	A	57	ARG
1	A	97	LEU

Some sidechains can be flipped to improve hydrogen bonding and reduce clashes. There are no such sidechains identified.

5.3.3 RNA ⓘ

There are no RNA molecules in this entry.

5.4 Non-standard residues in protein, DNA, RNA chains ⓘ

There are no non-standard protein/DNA/RNA residues in this entry.

5.5 Carbohydrates ⓘ

There are no carbohydrates in this entry.

5.6 Ligand geometry

4 ligands are modelled in this entry.

In the following table, the Counts columns list the number of bonds (or angles) for which Mogul statistics could be retrieved, the number of bonds (or angles) that are observed in the model and the number of bonds (or angles) that are defined in the chemical component dictionary. The Link column lists molecule types, if any, to which the group is linked. The Z score for a bond length (or angle) is the number of standard deviations the observed value is removed from the expected value. A bond length (or angle) with $|Z| > 2$ is considered an outlier worth inspection. RMSZ is the root-mean-square of all Z scores of the bond lengths (or angles).

Mol	Type	Chain	Res	Link	Bond lengths			Bond angles		
					Counts	RMSZ	# Z > 2	Counts	RMSZ	# Z > 2
2	RAR	A	200[A]	-	38,39,39	3.75	17 (44%)	46,54,54	2.18	11 (23%)
2	RAR	A	200[B]	-	37,37,39	3.78	16 (43%)	47,52,54	2.30	15 (31%)
3	NAP	A	201	-	42,52,52	3.34	17 (40%)	54,80,80	2.89	14 (25%)
4	GOL	A	202	-	5,5,5	0.44	0	5,5,5	0.08	0

In the following table, the Chirals column lists the number of chiral outliers, the number of chiral centers analysed, the number of these observed in the model and the number defined in the chemical component dictionary. Similar counts are reported in the Torsion and Rings columns. '-' means no outliers of that kind were identified.

Mol	Type	Chain	Res	Link	Chirals	Torsions	Rings
2	RAR	A	200[A]	-	-	0/19/33/33	0/3/4/4
2	RAR	A	200[B]	-	1/1/3/6	0/16/30/33	0/3/4/4
3	NAP	A	201	-	-	0/27/67/67	0/5/5/5
4	GOL	A	202	-	-	0/4/4/4	0/0/0/0

All (50) bond length outliers are listed below:

Mol	Chain	Res	Type	Atoms	Z	Observed(Å)	Ideal(Å)
2	A	200[A]	RAR	C25-C24	-4.00	1.35	1.40
2	A	200[B]	RAR	C25-C24	-3.52	1.36	1.40
2	A	200[A]	RAR	C03-C02	-3.44	1.34	1.42
2	A	200[B]	RAR	C03-C02	-3.44	1.34	1.42
2	A	200[A]	RAR	C21-C20	-3.43	1.49	1.53
2	A	200[A]	RAR	C13-C10	-2.53	1.37	1.41
2	A	200[B]	RAR	C13-C10	-2.53	1.37	1.41
3	A	201	NAP	C3B-C2B	-2.46	1.47	1.53
3	A	201	NAP	O3B-C3B	-2.29	1.37	1.43
3	A	201	NAP	O2D-C2D	-2.18	1.37	1.43
3	A	201	NAP	C5A-C4A	-2.14	1.35	1.40
3	A	201	NAP	O2B-C2B	-2.10	1.37	1.44

Continued on next page...

Continued from previous page...

Mol	Chain	Res	Type	Atoms	Z	Observed(Å)	Ideal(Å)
3	A	201	NAP	O4B-C4B	2.07	1.49	1.45
2	A	200[A]	RAR	C34-N33	2.15	1.38	1.35
2	A	200[B]	RAR	C34-N33	2.15	1.38	1.35
2	A	200[A]	RAR	C13-C14	2.16	1.50	1.47
2	A	200[B]	RAR	C13-C14	2.16	1.50	1.47
2	A	200[B]	RAR	C27-C26	2.29	1.43	1.38
2	A	200[A]	RAR	C27-C26	2.40	1.43	1.38
3	A	201	NAP	C6A-N6A	2.78	1.43	1.34
2	A	200[A]	RAR	C31-C05	3.12	1.44	1.39
2	A	200[B]	RAR	C31-C05	3.12	1.44	1.39
3	A	201	NAP	C6N-N1N	3.18	1.44	1.35
2	A	200[A]	RAR	C07-C10	3.58	1.48	1.40
2	A	200[B]	RAR	C07-C10	3.58	1.48	1.40
2	A	200[A]	RAR	C02-N01	3.70	1.43	1.34
2	A	200[B]	RAR	C02-N01	3.70	1.43	1.34
2	A	200[B]	RAR	C16-N17	3.88	1.43	1.35
2	A	200[A]	RAR	C16-N17	3.92	1.43	1.35
3	A	201	NAP	C2A-N3A	4.31	1.39	1.32
3	A	201	NAP	O4D-C1D	4.33	1.46	1.41
3	A	201	NAP	C8A-N7A	4.47	1.43	1.34
2	A	200[A]	RAR	C25-C19	4.62	1.52	1.44
2	A	200[A]	RAR	C34-N35	4.70	1.43	1.34
2	A	200[B]	RAR	C34-N35	4.70	1.43	1.34
2	A	200[B]	RAR	C25-C19	4.74	1.52	1.44
2	A	200[A]	RAR	C02-N36	4.86	1.42	1.35
2	A	200[B]	RAR	C02-N36	4.86	1.42	1.35
3	A	201	NAP	C7N-N7N	5.10	1.43	1.33
3	A	201	NAP	O4B-C1B	6.07	1.48	1.41
2	A	200[B]	RAR	N17-N18	6.09	1.47	1.37
2	A	200[A]	RAR	N17-N18	6.18	1.47	1.37
3	A	201	NAP	C6N-C5N	6.85	1.53	1.38
2	A	200[B]	RAR	C29-C24	6.93	1.49	1.39
2	A	200[A]	RAR	C29-C24	6.95	1.49	1.39
3	A	201	NAP	C5N-C4N	7.97	1.55	1.38
3	A	201	NAP	C4N-C3N	8.95	1.54	1.39
3	A	201	NAP	C2N-C3N	9.02	1.52	1.39
2	A	200[A]	RAR	C19-N18	15.65	1.46	1.29
2	A	200[B]	RAR	C19-N18	15.84	1.47	1.29

All (40) bond angle outliers are listed below:

Continued on next page...

Continued from previous page...

Mol	Chain	Res	Type	Atoms	Z	Observed(°)	Ideal(°)
3	A	201	NAP	N3A-C2A-N1A	-11.98	119.72	128.89
2	A	200[A]	RAR	C25-C19-N18	-9.07	114.44	125.69
3	A	201	NAP	C4B-O4B-C1B	-7.83	101.11	109.72
2	A	200[B]	RAR	C25-C19-N18	-6.97	117.03	125.69
3	A	201	NAP	C5N-C4N-C3N	-6.06	112.72	120.33
2	A	200[A]	RAR	N33-C34-N36	-5.76	119.77	125.78
2	A	200[B]	RAR	N33-C34-N36	-5.76	119.77	125.78
3	A	201	NAP	C3B-C2B-C1B	-3.45	96.05	102.73
2	A	200[B]	RAR	C13-C14-C15	-2.98	120.94	126.87
3	A	201	NAP	PN-O3-PA	-2.92	124.53	132.73
2	A	200[A]	RAR	C04-C03-C02	-2.67	118.80	122.21
2	A	200[B]	RAR	C04-C03-C02	-2.67	118.80	122.21
2	A	200[B]	RAR	C26-C25-C19	-2.56	118.43	121.98
2	A	200[A]	RAR	C13-C14-C15	-2.38	122.13	126.87
3	A	201	NAP	C4D-O4D-C1D	-2.36	107.13	109.72
2	A	200[A]	RAR	C03-C32-N33	-2.35	119.79	123.86
2	A	200[B]	RAR	C03-C32-N33	-2.35	119.79	123.86
2	A	200[A]	RAR	C13-C31-C05	-2.28	119.86	122.29
2	A	200[B]	RAR	C13-C31-C05	-2.28	119.86	122.29
2	A	200[A]	RAR	C24-C25-C19	2.00	119.55	117.68
3	A	201	NAP	O3-PN-O5D	2.03	108.32	102.94
3	A	201	NAP	O3B-C3B-C2B	2.58	118.61	111.16
2	A	200[A]	RAR	C32-C03-C02	2.65	119.52	115.72
2	A	200[B]	RAR	C32-C03-C02	2.65	119.52	115.72
3	A	201	NAP	O2B-C2B-C1B	2.66	120.38	110.02
3	A	201	NAP	C2N-C3N-C4N	2.78	121.38	118.29
2	A	200[A]	RAR	C34-N36-C02	2.80	120.23	117.04
2	A	200[B]	RAR	C34-N36-C02	2.80	120.23	117.04
3	A	201	NAP	O3D-C3D-C4D	2.92	119.80	111.05
2	A	200[B]	RAR	C15-C16-N17	3.14	121.06	117.67
2	A	200[A]	RAR	C32-N33-C34	3.22	120.49	116.05
2	A	200[B]	RAR	C32-N33-C34	3.22	120.49	116.05
3	A	201	NAP	O3B-C3B-C4B	3.46	121.43	111.05
2	A	200[B]	RAR	C21-C20-N17	3.50	119.93	111.13
2	A	200[B]	RAR	C21-C20-C24	3.62	121.29	112.15
2	A	200[A]	RAR	N35-C34-N33	4.21	121.18	117.39
2	A	200[B]	RAR	N35-C34-N33	4.21	121.18	117.39
2	A	200[B]	RAR	C24-C25-C19	4.89	122.24	117.68
3	A	201	NAP	O4B-C1B-N9A	5.57	119.76	108.10
3	A	201	NAP	O4D-C1D-N1N	7.66	116.55	108.13

All (1) chirality outliers are listed below:

Mol	Chain	Res	Type	Atom
2	A	200[B]	RAR	C20

There are no torsion outliers.

There are no ring outliers.

4 monomers are involved in 14 short contacts:

Mol	Chain	Res	Type	Clashes	Symm-Clashes
2	A	200[A]	RAR	9	0
2	A	200[B]	RAR	2	0
3	A	201	NAP	2	0
4	A	202	GOL	0	1

5.7 Other polymers [i](#)

There are no such residues in this entry.

5.8 Polymer linkage issues [i](#)

There are no chain breaks in this entry.

6 Fit of model and data [i](#)

6.1 Protein, DNA and RNA chains [i](#)

In the following table, the column labelled ‘#RSRZ> 2’ contains the number (and percentage) of RSRZ outliers, followed by percent RSRZ outliers for the chain as percentile scores relative to all X-ray entries and entries of similar resolution. The OWAB column contains the minimum, median, 95th percentile and maximum values of the occupancy-weighted average B-factor per residue. The column labelled ‘Q< 0.9’ lists the number of (and percentage) of residues with an average occupancy less than 0.9.

Mol	Chain	Analysed	<RSRZ>	#RSRZ>2	OWAB(Å ²)	Q<0.9
1	A	161/161 (100%)	-0.17	3 (1%) 70 70	7, 17, 35, 47	0

All (3) RSRZ outliers are listed below:

Mol	Chain	Res	Type	RSRZ
1	A	159	VAL	3.2
1	A	83	TYR	2.9
1	A	84	GLN	2.2

6.2 Non-standard residues in protein, DNA, RNA chains [i](#)

There are no non-standard protein/DNA/RNA residues in this entry.

6.3 Carbohydrates [i](#)

There are no carbohydrates in this entry.

6.4 Ligands [i](#)

In the following table, the Atoms column lists the number of modelled atoms in the group and the number defined in the chemical component dictionary. LLDF column lists the quality of electron density of the group with respect to its neighbouring residues in protein, DNA or RNA chains. The B-factors column lists the minimum, median, 95th percentile and maximum values of B factors of atoms in the group. The column labelled ‘Q< 0.9’ lists the number of atoms with occupancy less than 0.9.

Mol	Type	Chain	Res	Atoms	RSCC	RSR	LLDF	B-factors(Å ²)	Q<0.9
4	GOL	A	202	6/6	0.86	0.18	8.42	32,40,46,46	0
2	RAR	A	200[B]	34/36	0.84	0.20	4.51	13,27,33,34	14

Continued on next page...

Continued from previous page...

Mol	Type	Chain	Res	Atoms	RSCC	RSR	LLDF	B-factors(\AA^2)	Q<0.9
2	RAR	A	200[A]	36/36	0.84	0.20	4.51	13,25,29,30	16
3	NAP	A	201	48/48	0.96	0.11	0.09	9,13,24,26	0

6.5 Other polymers ⓘ

There are no such residues in this entry.