



Full wwPDB X-ray Structure Validation Report ⓘ

Jan 31, 2016 – 08:49 PM GMT

PDB ID : 1M7A
Title : CANDIDA ALBICANS DIHYDROFOLATE REDUCTASE COMPLEXED WITH DIHYDRO-NICOTINAMIDE-ADENINE-DINUCLEOTIDE PHOSPHATE (NADPH) AND 7-[2-methoxy-1-(methoxymethyl)ethyl]-7H-pyrrolo[3,2-f] quinazoline-1,3-diamine (GW557)
Authors : Whitlow, M.; Howard, A.J.; Kuyper, L.F.
Deposited on : 2002-07-19
Resolution : 1.76 Å(reported)

This is a Full wwPDB X-ray Structure Validation Report for a publicly released PDB entry.
We welcome your comments at validation@mail.wwpdb.org
A user guide is available at
<http://wwpdb.org/validation/2016/XrayValidationReportHelp>
with specific help available everywhere you see the ⓘ symbol.

The following versions of software and data (see [references ⓘ](#)) were used in the production of this report:

MolProbity : 4.02b-467
Mogul : 1.7 (RC4), CSD as536be (2015)
Xtriage (Phenix) : 1.9-1692
EDS : rb-20026688
Percentile statistics : 20151230.v01 (using entries in the PDB archive December 30th 2015)
Refmac : 5.8.0135
CCP4 : 6.5.0
Ideal geometry (proteins) : Engh & Huber (2001)
Ideal geometry (DNA, RNA) : Parkinson et al. (1996)
Validation Pipeline (wwPDB-VP) : trunk26865

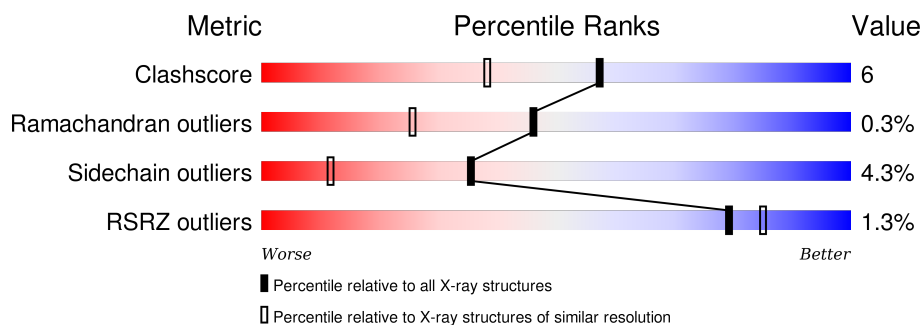
1 Overall quality at a glance

The following experimental techniques were used to determine the structure:

X-RAY DIFFRACTION

The reported resolution of this entry is 1.76 Å.

Percentile scores (ranging between 0-100) for global validation metrics of the entry are shown in the following graphic. The table shows the number of entries on which the scores are based.



Metric	Whole archive (#Entries)	Similar resolution (#Entries, resolution range(Å))
Clashscore	102246	1730 (1.76-1.76)
Ramachandran outliers	100387	1711 (1.76-1.76)
Sidechain outliers	100360	1711 (1.76-1.76)
RSRZ outliers	91569	1610 (1.76-1.76)

The table below summarises the geometric issues observed across the polymeric chains and their fit to the electron density. The red, orange, yellow and green segments on the lower bar indicate the fraction of residues that contain outliers for ≥ 3 , 2, 1 and 0 types of geometric quality criteria. A grey segment represents the fraction of residues that are not modelled. The numeric value for each fraction is indicated below the corresponding segment, with a dot representing fractions $\leq 5\%$. The upper red bar (where present) indicates the fraction of residues that have poor fit to the electron density. The numeric value is given above the bar.

Mol	Chain	Length	Quality of chain
1	A	192	<div> <div>2%</div> <div> <div></div> <div>77%</div> <div>19%</div> <div>.</div> </div> </div>
1	B	192	<div> <div>%</div> <div> <div></div> <div>77%</div> <div>18%</div> <div>..</div> </div> </div>

2 Entry composition [i](#)

There are 4 unique types of molecules in this entry. The entry contains 3676 atoms, of which 0 are hydrogens and 0 are deuteriums.

In the tables below, the ZeroOcc column contains the number of atoms modelled with zero occupancy, the AltConf column contains the number of residues with at least one atom in alternate conformation and the Trace column contains the number of residues modelled with at most 2 atoms.

- Molecule 1 is a protein called DIHYDROFOLATE REDUCTASE.

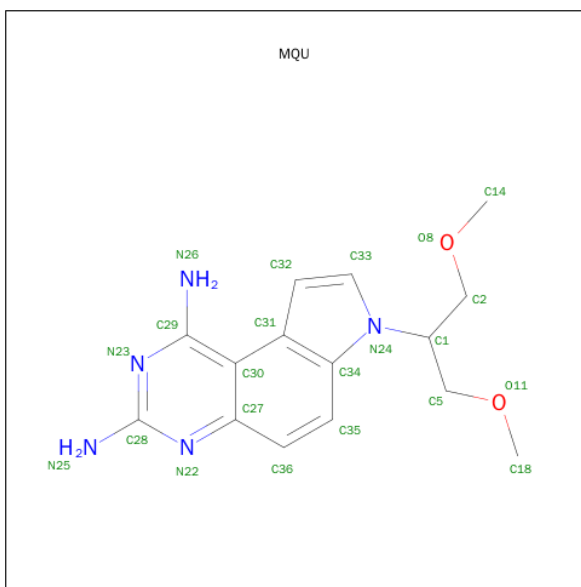
Mol	Chain	Residues	Atoms					ZeroOcc	AltConf	Trace
1	A	192	Total	C	N	O	S	0	12	0
			1594	1023	271	296	4			
1	B	192	Total	C	N	O	S	0	11	0
			1589	1020	264	301	4			

- Molecule 2 is NADPH DIHYDRO-NICOTINAMIDE-ADENINE-DINUCLEOTIDE PHOSPHATE (three-letter code: NDP) (formula: $C_{21}H_{30}N_7O_{17}P_3$).



Mol	Chain	Residues	Atoms					ZeroOcc	AltConf
2	A	1	Total	C	N	O	P	0	0
			48	21	7	17	3		
2	B	1	Total	C	N	O	P	0	0
			48	21	7	17	3		

- Molecule 3 is 7-[2-METHOXY-1-(METHOXYMETHYL)ETHYL]-7H-PYRROLO[3,2-F] QUINAZOLINE-1,3-DIAMINE (three-letter code: MQU) (formula: $C_{15}H_{19}N_5O_2$).



Mol	Chain	Residues	Atoms				ZeroOcc	AltConf
3	A	1	Total	C	N	O	0	0
			22	15	5	2		
3	B	1	Total	C	N	O	0	0
			22	15	5	2		

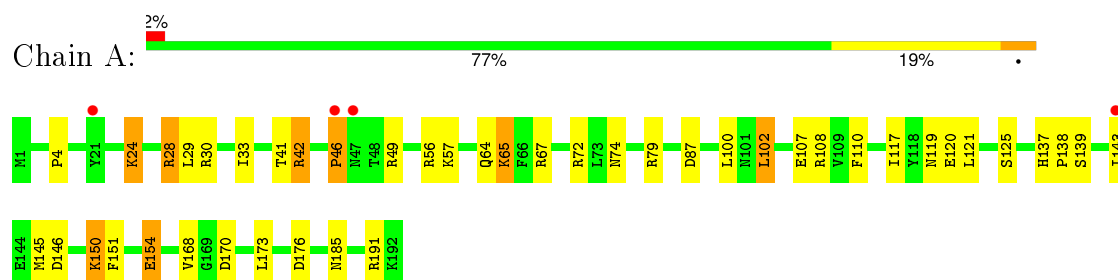
- Molecule 4 is water.

Mol	Chain	Residues	Atoms		ZeroOcc	AltConf
4	A	168	Total	O	0	7
			175	175		
4	B	174	Total	O	0	4
			178	178		

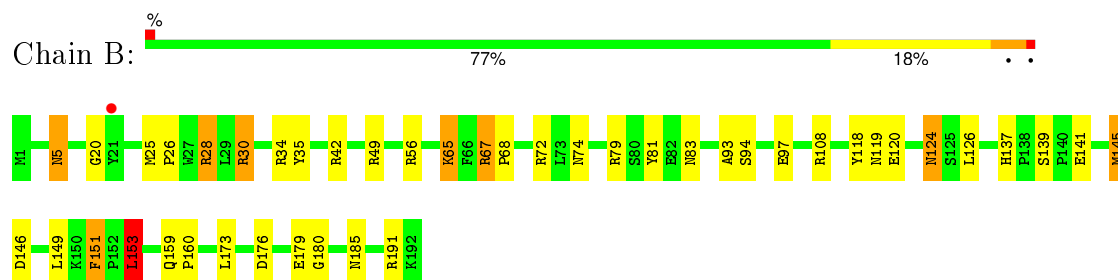
3 Residue-property plots [i](#)

These plots are drawn for all protein, RNA and DNA chains in the entry. The first graphic for a chain summarises the proportions of errors displayed in the second graphic. The second graphic shows the sequence view annotated by issues in geometry and electron density. Residues are color-coded according to the number of geometric quality criteria for which they contain at least one outlier: green = 0, yellow = 1, orange = 2 and red = 3 or more. A red dot above a residue indicates a poor fit to the electron density ($\text{RSRZ} > 2$). Stretches of 2 or more consecutive residues without any outlier are shown as a green connector. Residues present in the sample, but not in the model, are shown in grey.

• Molecule 1: DIHYDROFOLATE REDUCTASE



• Molecule 1: DIHYDROFOLATE REDUCTASE



4 Data and refinement statistics

Property	Value	Source
Space group	P 1 21 1	Depositor
Cell constants a, b, c, α , β , γ	76.91Å 67.28Å 38.49Å 90.00° 93.07° 90.00°	Depositor
Resolution (Å)	10.00 – 1.76 33.37 – 1.77	Depositor EDS
% Data completeness (in resolution range)	94.9 (10.00-1.76) 91.0 (33.37-1.77)	Depositor EDS
R_{merge}	0.06	Depositor
R_{sym}	0.06	Depositor
$\langle I/\sigma(I) \rangle$ ¹	2.44 (at 1.77Å)	Xtriage
Refinement program	PROFFT	Depositor
R, R_{free}	0.151 , (Not available) 0.150 , (Not available)	Depositor DCC
R_{free} test set	No test flags present.	DCC
Wilson B-factor (Å ²)	13.6	Xtriage
Anisotropy	0.229	Xtriage
Bulk solvent k_{sol} (e/Å ³), B_{sol} (Å ²)	0.30 , 75.7	EDS
Estimated twinning fraction	No twinning to report.	Xtriage
L-test for twinning ²	$\langle L \rangle = 0.48$, $\langle L^2 \rangle = 0.31$	Xtriage
Outliers	0 of 36248 reflections	Xtriage
F_o, F_c correlation	0.96	EDS
Total number of atoms	3676	wwPDB-VP
Average B, all atoms (Å ²)	17.0	wwPDB-VP

Xtriage's analysis on translational NCS is as follows: *The largest off-origin peak in the Patterson function is 6.26% of the height of the origin peak. No significant pseudotranslation is detected.*

¹Intensities estimated from amplitudes.

²Theoretical values of $\langle |L| \rangle$, $\langle L^2 \rangle$ for acentric reflections are 0.5, 0.375 respectively for untwinned datasets, and 0.333, 0.2 for perfectly twinned datasets.

5 Model quality ⓘ

5.1 Standard geometry ⓘ

Bond lengths and bond angles in the following residue types are not validated in this section: NDP, MQU

The Z score for a bond length (or angle) is the number of standard deviations the observed value is removed from the expected value. A bond length (or angle) with $|Z| > 5$ is considered an outlier worth inspection. RMSZ is the root-mean-square of all Z scores of the bond lengths (or angles).

Mol	Chain	Bond lengths		Bond angles	
		RMSZ	$\# Z > 5$	RMSZ	$\# Z > 5$
1	A	1.17	1/1690 (0.1%)	1.83	36/2290 (1.6%)
1	B	1.19	2/1681 (0.1%)	1.58	28/2275 (1.2%)
All	All	1.18	3/3371 (0.1%)	1.71	64/4565 (1.4%)

All (3) bond length outliers are listed below:

Mol	Chain	Res	Type	Atoms	Z	Observed(Å)	Ideal(Å)
1	A	107	GLU	CD-OE1	-7.88	1.17	1.25
1	B	180	GLY	N-CA	5.54	1.54	1.46
1	B	179	GLU	CD-OE1	-5.38	1.19	1.25

All (64) bond angle outliers are listed below:

Mol	Chain	Res	Type	Atoms	Z	Observed(°)	Ideal(°)
1	A	30[A]	ARG	NE-CZ-NH2	-14.70	112.95	120.30
1	A	30[B]	ARG	NE-CZ-NH2	-14.70	112.95	120.30
1	B	56	ARG	CD-NE-CZ	13.81	142.94	123.60
1	A	30[A]	ARG	NE-CZ-NH1	13.52	127.06	120.30
1	A	30[B]	ARG	NE-CZ-NH1	13.52	127.06	120.30
1	A	108	ARG	NE-CZ-NH1	-11.82	114.39	120.30
1	A	67	ARG	NE-CZ-NH1	10.57	125.59	120.30
1	A	49	ARG	NE-CZ-NH2	-10.24	115.18	120.30
1	A	28	ARG	CD-NE-CZ	10.15	137.81	123.60
1	A	42[A]	ARG	NE-CZ-NH1	9.97	125.28	120.30
1	A	42[B]	ARG	NE-CZ-NH1	9.97	125.28	120.30
1	A	191	ARG	NE-CZ-NH1	9.30	124.95	120.30
1	A	72	ARG	NE-CZ-NH1	9.00	124.80	120.30
1	A	102	LEU	CA-CB-CG	8.14	134.02	115.30
1	B	81	TYR	CB-CG-CD1	7.88	125.73	121.00
1	A	56	ARG	CD-NE-CZ	7.82	134.55	123.60

Continued on next page...

Continued from previous page...

Mol	Chain	Res	Type	Atoms	Z	Observed(°)	Ideal(°)
1	B	56	ARG	NE-CZ-NH2	7.61	124.11	120.30
1	B	35	TYR	CB-CG-CD2	-7.53	116.48	121.00
1	B	49	ARG	NE-CZ-NH2	-7.52	116.54	120.30
1	A	79[A]	ARG	NE-CZ-NH1	7.31	123.96	120.30
1	A	79[B]	ARG	NE-CZ-NH1	7.31	123.96	120.30
1	B	67	ARG	CD-NE-CZ	7.28	133.79	123.60
1	A	154	GLU	CA-CB-CG	7.25	129.36	113.40
1	B	30	ARG	CD-NE-CZ	7.06	133.49	123.60
1	B	79	ARG	NE-CZ-NH1	7.03	123.81	120.30
1	B	79	ARG	NE-CZ-NH2	-6.88	116.86	120.30
1	B	34	ARG	NE-CZ-NH1	6.62	123.61	120.30
1	B	119	ASN	CB-CA-C	6.44	123.28	110.40
1	B	120	GLU	OE1-CD-OE2	6.33	130.89	123.30
1	B	118	TYR	CB-CG-CD1	6.21	124.73	121.00
1	B	146	ASP	CB-CG-OD1	6.20	123.88	118.30
1	B	153	LEU	CB-CA-C	6.15	121.88	110.20
1	B	97	GLU	OE1-CD-OE2	-6.09	115.99	123.30
1	B	34	ARG	NE-CZ-NH2	-6.09	117.26	120.30
1	A	28	ARG	NE-CZ-NH2	6.04	123.32	120.30
1	A	151	PHE	CB-CG-CD2	-6.04	116.57	120.80
1	A	67	ARG	NE-CZ-NH2	-5.99	117.30	120.30
1	B	42	ARG	NE-CZ-NH2	5.99	123.29	120.30
1	B	191	ARG	NE-CZ-NH1	5.99	123.29	120.30
1	B	145	MET	CB-CG-SD	-5.84	94.87	112.40
1	A	56	ARG	NE-CZ-NH2	5.82	123.21	120.30
1	B	49	ARG	NH1-CZ-NH2	5.74	125.71	119.40
1	A	146	ASP	CB-CG-OD2	5.74	123.46	118.30
1	B	151	PHE	CA-CB-CG	5.74	127.67	113.90
1	B	56	ARG	NH1-CZ-NH2	-5.64	113.19	119.40
1	B	108	ARG	NE-CZ-NH1	5.64	123.12	120.30
1	A	87	ASP	CB-CG-OD1	5.62	123.36	118.30
1	A	42[A]	ARG	CA-CB-CG	5.59	125.69	113.40
1	A	42[B]	ARG	CA-CB-CG	5.59	125.69	113.40
1	A	150	LYS	CA-CB-CG	5.58	125.67	113.40
1	B	72	ARG	O-C-N	5.42	131.37	122.70
1	A	72	ARG	NE-CZ-NH2	-5.42	117.59	120.30
1	A	154	GLU	CG-CD-OE1	5.42	129.13	118.30
1	A	110	PHE	CB-CG-CD1	-5.37	117.04	120.80
1	A	139	SER	N-CA-CB	-5.37	102.44	110.50
1	A	24	LYS	CA-CB-CG	5.36	125.18	113.40
1	B	72	ARG	CD-NE-CZ	5.35	131.09	123.60
1	A	28	ARG	CG-CD-NE	5.29	122.92	111.80

Continued on next page...

Continued from previous page...

Mol	Chain	Res	Type	Atoms	Z	Observed(°)	Ideal(°)
1	B	72	ARG	NE-CZ-NH2	5.28	122.94	120.30
1	A	46	PRO	N-CA-C	5.26	125.79	112.10
1	A	56	ARG	NE-CZ-NH1	5.17	122.89	120.30
1	B	49	ARG	NE-CZ-NH1	-5.13	117.73	120.30
1	A	154	GLU	CB-CG-CD	5.02	127.75	114.20
1	A	56	ARG	NH1-CZ-NH2	-5.00	113.90	119.40

There are no chirality outliers.

There are no planarity outliers.

5.2 Too-close contacts ⓘ

In the following table, the Non-H and H(model) columns list the number of non-hydrogen atoms and hydrogen atoms in the chain respectively. The H(added) column lists the number of hydrogen atoms added and optimized by MolProbity. The Clashes column lists the number of clashes within the asymmetric unit, whereas Symm-Clashes lists symmetry related clashes.

Mol	Chain	Non-H	H(model)	H(added)	Clashes	Symm-Clashes
1	A	1594	0	1620	22	0
1	B	1589	0	1614	17	0
2	A	48	0	26	2	0
2	B	48	0	26	0	0
3	A	22	0	19	1	0
3	B	22	0	19	0	0
4	A	175	0	0	4	0
4	B	178	0	0	1	0
All	All	3676	0	3324	40	0

The all-atom clashscore is defined as the number of clashes found per 1000 atoms (including hydrogen atoms). The all-atom clashscore for this structure is 6.

All (40) close contacts within the same asymmetric unit are listed below, sorted by their clash magnitude.

Atom-1	Atom-2	Interatomic distance (Å)	Clash overlap (Å)
1:B:124:ASN:HD22	1:B:126:LEU:H	1.31	0.77
1:B:28:ARG:HH11	1:B:30:ARG:HG2	1.50	0.75
1:A:64:GLN:HG2	1:A:65:LYS:HE3	1.69	0.74
1:A:28:ARG:HB3	1:A:28:ARG:HH21	1.57	0.70
1:A:176:ASP:H	1:A:185:ASN:HD21	1.40	0.67
1:B:176:ASP:H	1:B:185:ASN:HD21	1.45	0.62

Continued on next page...

Continued from previous page...

Atom-1	Atom-2	Interatomic distance (Å)	Clash overlap (Å)
1:B:176:ASP:H	1:B:185:ASN:ND2	1.99	0.59
1:B:137:HIS:HD2	1:B:139:SER:H	1.51	0.57
1:B:83:ASN:ND2	1:B:94:SER:H	2.03	0.56
1:A:176:ASP:H	1:A:185:ASN:ND2	2.03	0.56
1:A:119:ASN:HB3	1:A:150:LYS:HE2	1.89	0.55
1:B:83:ASN:HD21	1:B:94:SER:H	1.58	0.52
1:A:65:LYS:H	1:A:65:LYS:CD	2.24	0.51
1:B:159:GLN:HB3	1:B:160:PRO:HD2	1.92	0.51
2:A:193:NDP:H2D	4:A:367:HOH:O	2.11	0.51
1:A:137:HIS:CD2	1:A:143:ILE:HD11	2.46	0.51
1:B:137:HIS:CD2	1:B:139:SER:H	2.30	0.50
1:B:151:PHE:HB2	1:B:153:LEU:HD13	1.93	0.49
1:B:5:ASN:ND2	4:B:297:HOH:O	2.46	0.49
1:A:65:LYS:HD2	1:A:65:LYS:H	1.77	0.48
1:A:117:ILE:HG23	1:A:121[A]:LEU:HD12	1.94	0.48
1:A:41[B]:THR:HG21	4:A:446:HOH:O	2.13	0.47
1:A:57:LYS:NZ	2:A:193:NDP:O3B	2.48	0.47
1:B:67:ARG:HA	1:B:68:PRO:C	2.35	0.46
1:B:83:ASN:HD22	1:B:93:ALA:HA	1.80	0.45
1:A:29:LEU:O	1:A:33[A]:ILE:HG12	2.17	0.44
1:A:42[A]:ARG:HH11	1:A:170:ASP:HB2	1.81	0.44
1:B:149:LEU:HD22	1:B:151:PHE:CZ	2.53	0.44
1:A:4:PRO:HG3	1:A:100:LEU:HD13	2.01	0.43
1:A:4:PRO:CG	1:A:100:LEU:HD13	2.50	0.42
1:A:33[A]:ILE:HD13	3:A:194:MQU:H36	2.02	0.42
1:A:125:SER:HB2	4:A:399:HOH:O	2.19	0.42
1:A:137:HIS:CG	1:A:138:PRO:HD2	2.54	0.41
1:A:150:LYS:HG3	4:A:233:HOH:O	2.20	0.41
1:A:42[A]:ARG:NH1	1:A:170:ASP:HB2	2.35	0.41
1:B:20:GLY:O	1:B:145:MET:HB2	2.21	0.41
1:A:28:ARG:HB3	1:A:28:ARG:NH2	2.32	0.41
1:A:168:VAL:HG21	1:A:173:LEU:HD21	2.03	0.40
1:B:25:MET:HA	1:B:26:PRO:HD3	1.78	0.40

There are no symmetry-related clashes.

5.3 Torsion angles [i](#)

5.3.1 Protein backbone [i](#)

In the following table, the Percentiles column shows the percent Ramachandran outliers of the chain as a percentile score with respect to all X-ray entries followed by that with respect to entries of similar resolution.

The Analysed column shows the number of residues for which the backbone conformation was analysed, and the total number of residues.

Mol	Chain	Analysed	Favoured	Allowed	Outliers	Percentiles	
1	A	202/192 (105%)	198 (98%)	3 (2%)	1 (0%)	34	14
1	B	201/192 (105%)	197 (98%)	4 (2%)	0	100	100
All	All	403/384 (105%)	395 (98%)	7 (2%)	1 (0%)	46	32

All (1) Ramachandran outliers are listed below:

Mol	Chain	Res	Type
1	A	46	PRO

5.3.2 Protein sidechains [i](#)

In the following table, the Percentiles column shows the percent sidechain outliers of the chain as a percentile score with respect to all X-ray entries followed by that with respect to entries of similar resolution.

The Analysed column shows the number of residues for which the sidechain conformation was analysed, and the total number of residues.

Mol	Chain	Analysed	Rotameric	Outliers	Percentiles	
1	A	186/177 (105%)	179 (96%)	7 (4%)	40	15
1	B	186/177 (105%)	175 (94%)	11 (6%)	24	6
All	All	372/354 (105%)	354 (95%)	18 (5%)	35	9

All (18) residues with a non-rotameric sidechain are listed below:

Mol	Chain	Res	Type
1	A	24	LYS
1	A	65	LYS
1	A	74	ASN
1	A	102	LEU
1	A	120	GLU

Continued on next page...

Continued from previous page...

Mol	Chain	Res	Type
1	A	145	MET
1	A	154	GLU
1	B	5	ASN
1	B	28	ARG
1	B	65[A]	LYS
1	B	65[B]	LYS
1	B	74	ASN
1	B	124	ASN
1	B	141[A]	GLU
1	B	141[B]	GLU
1	B	153	LEU
1	B	173[A]	LEU
1	B	173[B]	LEU

Some sidechains can be flipped to improve hydrogen bonding and reduce clashes. All (10) such sidechains are listed below:

Mol	Chain	Res	Type
1	A	47	ASN
1	A	159	GLN
1	A	185	ASN
1	B	5	ASN
1	B	83	ASN
1	B	101	ASN
1	B	123	ASN
1	B	124	ASN
1	B	137	HIS
1	B	185	ASN

5.3.3 RNA ⓘ

There are no RNA molecules in this entry.

5.4 Non-standard residues in protein, DNA, RNA chains ⓘ

There are no non-standard protein/DNA/RNA residues in this entry.

5.5 Carbohydrates ⓘ

There are no carbohydrates in this entry.

5.6 Ligand geometry

4 ligands are modelled in this entry.

In the following table, the Counts columns list the number of bonds (or angles) for which Mogul statistics could be retrieved, the number of bonds (or angles) that are observed in the model and the number of bonds (or angles) that are defined in the chemical component dictionary. The Link column lists molecule types, if any, to which the group is linked. The Z score for a bond length (or angle) is the number of standard deviations the observed value is removed from the expected value. A bond length (or angle) with $|Z| > 2$ is considered an outlier worth inspection. RMSZ is the root-mean-square of all Z scores of the bond lengths (or angles).

Mol	Type	Chain	Res	Link	Bond lengths			Bond angles		
					Counts	RMSZ	# $ Z > 2$	Counts	RMSZ	# $ Z > 2$
2	NDP	A	193	-	42,52,52	1.31	7 (16%)	55,80,80	1.74	14 (25%)
3	MQU	A	194	-	22,24,24	0.90	1 (4%)	21,34,34	1.86	3 (14%)
2	NDP	B	195	-	42,52,52	1.44	7 (16%)	55,80,80	1.36	6 (10%)
3	MQU	B	196	-	22,24,24	1.22	3 (13%)	21,34,34	1.96	7 (33%)

In the following table, the Chirals column lists the number of chiral outliers, the number of chiral centers analysed, the number of these observed in the model and the number defined in the chemical component dictionary. Similar counts are reported in the Torsion and Rings columns. '-' means no outliers of that kind were identified.

Mol	Type	Chain	Res	Link	Chirals	Torsions	Rings
2	NDP	A	193	-	-	0/30/77/77	0/5/5/5
3	MQU	A	194	-	-	0/6/10/10	0/3/3/3
2	NDP	B	195	-	-	0/30/77/77	0/5/5/5
3	MQU	B	196	-	-	0/6/10/10	0/3/3/3

All (18) bond length outliers are listed below:

Mol	Chain	Res	Type	Atoms	Z	Observed(Å)	Ideal(Å)
2	B	195	NDP	O4B-C1B	-4.03	1.36	1.41
2	A	193	NDP	C4N-C5N	-3.26	1.42	1.49
2	B	195	NDP	P2B-O2X	-3.25	1.43	1.54
2	B	195	NDP	PA-O2A	-3.00	1.42	1.54
2	B	195	NDP	C4N-C5N	-2.79	1.43	1.49
2	A	193	NDP	P2B-O3X	-2.56	1.45	1.54
3	B	196	MQU	C35-C34	-2.49	1.35	1.41
2	B	195	NDP	PN-O2N	-2.49	1.44	1.54
2	A	193	NDP	C5A-C4A	-2.09	1.35	1.40
2	B	195	NDP	C8A-N7A	-2.00	1.30	1.34
2	B	195	NDP	C2N-C3N	2.08	1.39	1.34

Continued on next page...

Continued from previous page...

Mol	Chain	Res	Type	Atoms	Z	Observed(Å)	Ideal(Å)
3	B	196	MQU	C29-N26	2.14	1.41	1.34
2	A	193	NDP	C5D-C4D	2.17	1.58	1.51
2	A	193	NDP	C3B-C2B	2.26	1.58	1.53
2	A	193	NDP	C2A-N1A	2.42	1.38	1.33
2	A	193	NDP	P2B-O2B	2.44	1.67	1.60
3	A	194	MQU	C27-N22	2.53	1.42	1.37
3	B	196	MQU	C27-N22	2.95	1.42	1.37

All (30) bond angle outliers are listed below:

Mol	Chain	Res	Type	Atoms	Z	Observed(°)	Ideal(°)
3	A	194	MQU	C33-N24-C1	-4.97	121.29	125.42
2	A	193	NDP	C1D-N1N-C2N	-4.38	113.28	120.91
2	B	195	NDP	C3N-C2N-N1N	-4.38	116.87	123.14
3	B	196	MQU	C30-C27-N22	-3.80	119.01	123.50
3	A	194	MQU	C30-C27-N22	-3.78	119.04	123.50
3	A	194	MQU	N22-C28-N23	-3.58	121.99	127.44
2	A	193	NDP	O2B-P2B-O1X	-3.26	98.97	107.11
3	B	196	MQU	N22-C28-N23	-3.13	122.68	127.44
2	A	193	NDP	C3N-C2N-N1N	-2.90	118.98	123.14
2	B	195	NDP	C1D-N1N-C2N	-2.79	116.05	120.91
3	B	196	MQU	C35-C34-N24	-2.66	128.99	131.94
2	B	195	NDP	C3B-C2B-C1B	-2.22	98.43	102.73
2	A	193	NDP	O5D-C5D-C4D	-2.21	100.96	109.12
2	B	195	NDP	O2B-P2B-O1X	-2.14	101.77	107.11
2	A	193	NDP	C2D-C3D-C4D	-2.04	98.42	102.61
2	A	193	NDP	N6A-C6A-N1A	2.05	123.60	119.20
2	A	193	NDP	O2D-C2D-C1D	2.17	117.53	109.94
2	A	193	NDP	O4B-C1B-C2B	2.43	111.00	106.60
2	B	195	NDP	C4N-C5N-C6N	2.69	127.01	122.58
2	A	193	NDP	O2N-PN-O3	2.69	117.30	105.09
2	B	195	NDP	O2X-P2B-O1X	2.72	119.34	110.58
3	B	196	MQU	C35-C34-C31	2.76	124.72	120.73
2	A	193	NDP	O3X-P2B-O1X	2.82	119.67	110.58
3	B	196	MQU	C33-N24-C1	2.85	127.79	125.42
2	A	193	NDP	C1D-N1N-C6N	2.91	127.32	120.81
3	B	196	MQU	C32-C31-C34	3.00	108.72	106.18
2	A	193	NDP	C4A-C5A-N7A	3.15	112.38	109.48
3	B	196	MQU	C36-C27-C30	3.17	123.86	120.21
2	A	193	NDP	PN-O3-PA	3.62	142.90	132.73
2	A	193	NDP	C4N-C5N-C6N	4.47	129.95	122.58

There are no chirality outliers.

There are no torsion outliers.

There are no ring outliers.

2 monomers are involved in 3 short contacts:

Mol	Chain	Res	Type	Clashes	Symm-Clashes
2	A	193	NDP	2	0
3	A	194	MQU	1	0

5.7 Other polymers [i](#)

There are no such residues in this entry.

5.8 Polymer linkage issues [i](#)

There are no chain breaks in this entry.

6 Fit of model and data [i](#)

6.1 Protein, DNA and RNA chains [i](#)

In the following table, the column labelled ‘#RSRZ> 2’ contains the number (and percentage) of RSRZ outliers, followed by percent RSRZ outliers for the chain as percentile scores relative to all X-ray entries and entries of similar resolution. The OWAB column contains the minimum, median, 95th percentile and maximum values of the occupancy-weighted average B-factor per residue. The column labelled ‘Q< 0.9’ lists the number of (and percentage) of residues with an average occupancy less than 0.9.

Mol	Chain	Analysed	<RSRZ>	#RSRZ>2	OWAB(Å ²)	Q<0.9
1	A	192/192 (100%)	-0.43	4 (2%) 67 73	7, 16, 34, 50	5 (2%)
1	B	192/192 (100%)	-0.46	1 (0%) 91 93	6, 14, 31, 45	9 (4%)
All	All	384/384 (100%)	-0.45	5 (1%) 79 85	6, 15, 33, 50	14 (3%)

All (5) RSRZ outliers are listed below:

Mol	Chain	Res	Type	RSRZ
1	A	46	PRO	3.6
1	A	21	TYR	3.0
1	B	21	TYR	2.4
1	A	47	ASN	2.3
1	A	143	ILE	2.3

6.2 Non-standard residues in protein, DNA, RNA chains [i](#)

There are no non-standard protein/DNA/RNA residues in this entry.

6.3 Carbohydrates [i](#)

There are no carbohydrates in this entry.

6.4 Ligands [i](#)

In the following table, the Atoms column lists the number of modelled atoms in the group and the number defined in the chemical component dictionary. LLDF column lists the quality of electron density of the group with respect to its neighbouring residues in protein, DNA or RNA chains. The B-factors column lists the minimum, median, 95th percentile and maximum values of B factors of atoms in the group. The column labelled ‘Q< 0.9’ lists the number of atoms with occupancy less than 0.9.

Mol	Type	Chain	Res	Atoms	RSCC	RSR	LLDF	B-factors(\AA^2)	Q<0.9
3	MQU	A	194	22/22	0.95	0.09	1.34	7,14,40,47	0
3	MQU	B	196	22/22	0.96	0.09	1.07	6,13,31,35	0
2	NDP	B	195	48/48	0.98	0.06	-0.53	6,11,18,22	0
2	NDP	A	193	48/48	0.98	0.06	-0.60	4,13,20,27	0

6.5 Other polymers [i](#)

There are no such residues in this entry.