



Full wwPDB X-ray Structure Validation Report ⓘ

Feb 1, 2016 – 06:47 PM GMT

PDB ID : 4MT7
Title : Crystal structure of collybistin I
Authors : Schneeberger, D.; Schindelin, H.
Deposited on : 2013-09-19
Resolution : 3.50 Å(reported)

This is a Full wwPDB X-ray Structure Validation Report for a publicly released PDB entry.
We welcome your comments at validation@mail.wwpdb.org
A user guide is available at
<http://wwpdb.org/validation/2016/XrayValidationReportHelp>
with specific help available everywhere you see the ⓘ symbol.

The following versions of software and data (see [references ⓘ](#)) were used in the production of this report:

MolProbity : 4.02b-467
Mogul : 1.7 (RC4), CSD as536be (2015)
Xtriage (Phenix) : 1.9-1692
EDS : rb-20026688
Percentile statistics : 20151230.v01 (using entries in the PDB archive December 30th 2015)
Refmac : 5.8.0135
CCP4 : 6.5.0
Ideal geometry (proteins) : Engh & Huber (2001)
Ideal geometry (DNA, RNA) : Parkinson et al. (1996)
Validation Pipeline (wwPDB-VP) : trunk26865

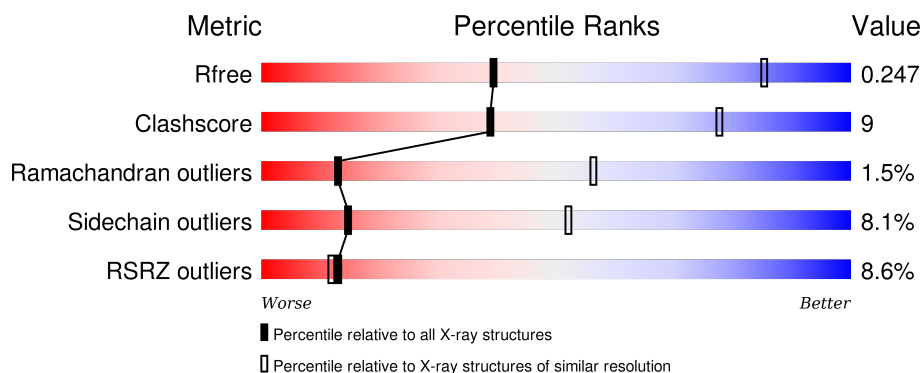
1 Overall quality at a glance

The following experimental techniques were used to determine the structure:

X-RAY DIFFRACTION

The reported resolution of this entry is 3.50 Å.

Percentile scores (ranging between 0-100) for global validation metrics of the entry are shown in the following graphic. The table shows the number of entries on which the scores are based.



Metric	Whole archive (#Entries)	Similar resolution (#Entries, resolution range(Å))
R_{free}	91344	1051 (3.60-3.40)
Clashscore	102246	1157 (3.60-3.40)
Ramachandran outliers	100387	1120 (3.60-3.40)
Sidechain outliers	100360	1121 (3.60-3.40)
RSRZ outliers	91569	1058 (3.60-3.40)

The table below summarises the geometric issues observed across the polymeric chains and their fit to the electron density. The red, orange, yellow and green segments on the lower bar indicate the fraction of residues that contain outliers for ≥ 3 , 2, 1 and 0 types of geometric quality criteria. A grey segment represents the fraction of residues that are not modelled. The numeric value for each fraction is indicated below the corresponding segment, with a dot representing fractions $\leq 5\%$. The upper red bar (where present) indicates the fraction of residues that have poor fit to the electron density. The numeric value is given above the bar.

Mol	Chain	Length	Quality of chain
1	A	485	

2 Entry composition

There is only 1 type of molecule in this entry. The entry contains 2859 atoms, of which 0 are hydrogens and 0 are deuteriums.

In the tables below, the ZeroOcc column contains the number of atoms modelled with zero occupancy, the AltConf column contains the number of residues with at least one atom in alternate conformation and the Trace column contains the number of residues modelled with at most 2 atoms.

- Molecule 1 is a protein called Rho guanine nucleotide exchange factor 9.

Mol	Chain	Residues	Atoms					ZeroOcc	AltConf	Trace
			Total	C	N	O	S			
1	A	337	2859	1810	502	526	21	0	0	0

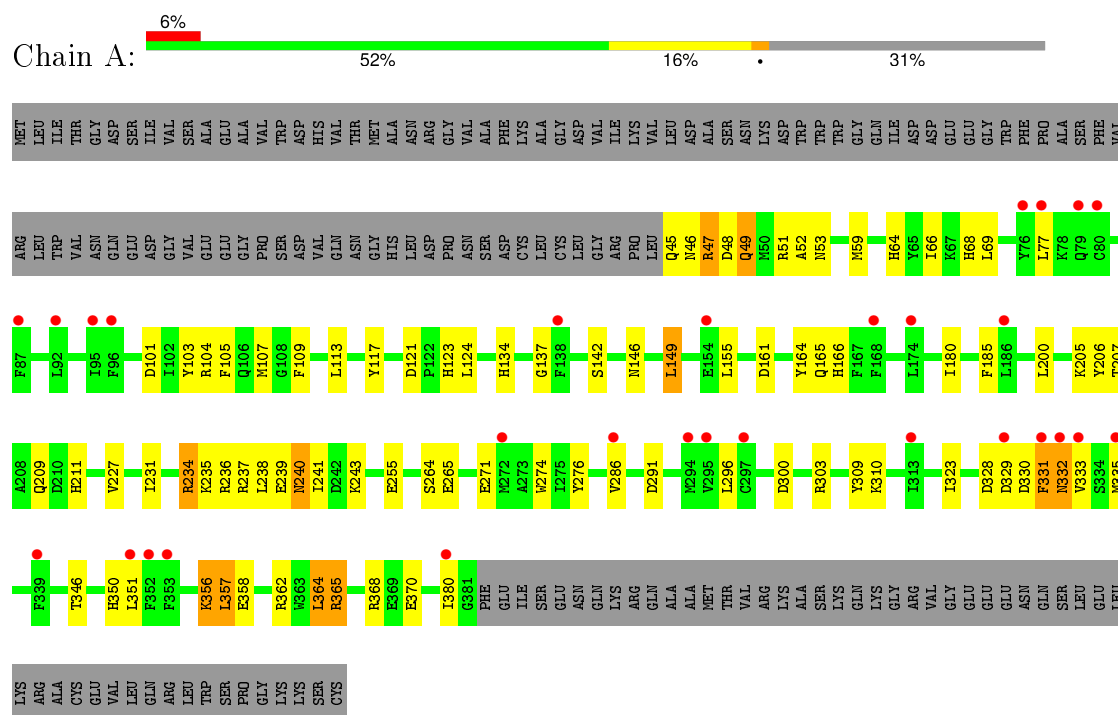
There is a discrepancy between the modelled and reference sequences:

Chain	Residue	Modelled	Actual	Comment	Reference
A	434	CYS	-	EXPRESSION TAG	UNP Q9QX73

3 Residue-property plots

These plots are drawn for all protein, RNA and DNA chains in the entry. The first graphic for a chain summarises the proportions of errors displayed in the second graphic. The second graphic shows the sequence view annotated by issues in geometry and electron density. Residues are color-coded according to the number of geometric quality criteria for which they contain at least one outlier: green = 0, yellow = 1, orange = 2 and red = 3 or more. A red dot above a residue indicates a poor fit to the electron density ($RSRZ > 2$). Stretches of 2 or more consecutive residues without any outlier are shown as a green connector. Residues present in the sample, but not in the model, are shown in grey.

- Molecule 1: Rho guanine nucleotide exchange factor 9



4 Data and refinement statistics

Property	Value	Source
Space group	C 2 2 21	Depositor
Cell constants a, b, c, α , β , γ	82.93Å 165.43Å 129.12Å 90.00° 90.00° 90.00°	Depositor
Resolution (Å)	50.89 – 3.50 64.56 – 3.50	Depositor EDS
% Data completeness (in resolution range)	99.3 (50.89-3.50) 99.9 (64.56-3.50)	Depositor EDS
R_{merge}	(Not available)	Depositor
R_{sym}	0.08	Depositor
$\langle I/\sigma(I) \rangle$ ¹	2.04 (at 3.49Å)	Xtriage
Refinement program	PHENIX (phenix.refine: 1.8_1069)	Depositor
R, R_{free}	0.221 , 0.249 0.222 , 0.247	Depositor DCC
R_{free} test set	866 reflections (7.54%)	DCC
Wilson B-factor (Å ²)	132.1	Xtriage
Anisotropy	0.654	Xtriage
Bulk solvent k_{sol} (e/Å ³), B_{sol} (Å ²)	0.30 , 68.3	EDS
Estimated twinning fraction	No twinning to report.	Xtriage
L-test for twinning ²	$\langle L \rangle = 0.41$, $\langle L^2 \rangle = 0.24$	Xtriage
Outliers	0 of 11543 reflections	Xtriage
F_o, F_c correlation	0.92	EDS
Total number of atoms	2859	wwPDB-VP
Average B, all atoms (Å ²)	120.0	wwPDB-VP

Xtriage's analysis on translational NCS is as follows: *The largest off-origin peak in the Patterson function is 6.19% of the height of the origin peak. No significant pseudotranslation is detected.*

¹Intensities estimated from amplitudes.

²Theoretical values of $\langle |L| \rangle$, $\langle L^2 \rangle$ for acentric reflections are 0.5, 0.375 respectively for untwinned datasets, and 0.333, 0.2 for perfectly twinned datasets.

5 Model quality

5.1 Standard geometry

The Z score for a bond length (or angle) is the number of standard deviations the observed value is removed from the expected value. A bond length (or angle) with $|Z| > 5$ is considered an outlier worth inspection. RMSZ is the root-mean-square of all Z scores of the bond lengths (or angles).

Mol	Chain	Bond lengths		Bond angles	
		RMSZ	$\# Z > 5$	RMSZ	$\# Z > 5$
1	A	0.30	0/2917	0.47	0/3915

There are no bond length outliers.

There are no bond angle outliers.

There are no chirality outliers.

There are no planarity outliers.

5.2 Too-close contacts

In the following table, the Non-H and H(model) columns list the number of non-hydrogen atoms and hydrogen atoms in the chain respectively. The H(added) column lists the number of hydrogen atoms added and optimized by MolProbity. The Clashes column lists the number of clashes within the asymmetric unit, whereas Symm-Clashes lists symmetry related clashes.

Mol	Chain	Non-H	H(model)	H(added)	Clashes	Symm-Clashes
1	A	2859	0	2793	51	0
All	All	2859	0	2793	51	0

The all-atom clashscore is defined as the number of clashes found per 1000 atoms (including hydrogen atoms). The all-atom clashscore for this structure is 9.

All (51) close contacts within the same asymmetric unit are listed below, sorted by their clash magnitude.

Atom-1	Atom-2	Interatomic distance (Å)	Clash overlap (Å)
1:A:142:SER:O	1:A:146:ASN:ND2	2.20	0.74
1:A:330:ASP:HA	1:A:331:PHE:C	2.16	0.66
1:A:52:ALA:HB2	1:A:123:HIS:HB3	1.81	0.63
1:A:235:LYS:HG3	1:A:236:ARG:N	2.15	0.62
1:A:271:GLU:HG2	1:A:286:VAL:HG22	1.82	0.61

Continued on next page...

Continued from previous page...

Atom-1	Atom-2	Interatomic distance (Å)	Clash overlap (Å)
1:A:300:ASP:OD2	1:A:303:ARG:N	2.34	0.60
1:A:238:LEU:HA	1:A:241:ILE:HD13	1.83	0.60
1:A:235:LYS:HG3	1:A:236:ARG:H	1.69	0.58
1:A:276:TYR:O	1:A:350:HIS:ND1	2.31	0.57
1:A:328:ASP:OD1	1:A:329:ASP:N	2.37	0.57
1:A:330:ASP:HA	1:A:332:ASN:N	2.20	0.56
1:A:45:GLN:HG2	1:A:49:GLN:HB3	1.92	0.52
1:A:49:GLN:OE1	1:A:53:ASN:ND2	2.42	0.51
1:A:161:ASP:HB3	1:A:164:TYR:HD1	1.76	0.51
1:A:64:HIS:O	1:A:68:HIS:ND1	2.44	0.49
1:A:231:ILE:O	1:A:235:LYS:HG2	2.13	0.49
1:A:238:LEU:O	1:A:241:ILE:HB	2.11	0.49
1:A:109:PHE:HD1	1:A:134:HIS:CD2	2.30	0.49
1:A:51:ARG:NH1	1:A:207:THR:OG1	2.48	0.47
1:A:328:ASP:HB2	1:A:335:MET:SD	2.55	0.47
1:A:146:ASN:N	1:A:146:ASN:HD22	2.12	0.46
1:A:237:ARG:O	1:A:240:ASN:ND2	2.43	0.46
1:A:227:VAL:O	1:A:231:ILE:HG12	2.15	0.46
1:A:243:LYS:HD2	1:A:243:LYS:HA	1.64	0.46
1:A:296:LEU:HD12	1:A:310:LYS:HB2	1.97	0.45
1:A:109:PHE:HA	1:A:134:HIS:CD2	2.51	0.45
1:A:161:ASP:O	1:A:165:GLN:HG3	2.18	0.43
1:A:45:GLN:HG2	1:A:46:ASN:H	1.82	0.43
1:A:364:LEU:O	1:A:368:ARG:HG3	2.19	0.43
1:A:205:LYS:HE2	1:A:206:TYR:CZ	2.52	0.43
1:A:103:TYR:O	1:A:107:MET:HG3	2.19	0.43
1:A:69:LEU:HD13	1:A:103:TYR:HA	2.01	0.43
1:A:59:MET:HE2	1:A:117:TYR:HB2	2.01	0.43
1:A:234:ARG:HG3	1:A:235:LYS:N	2.33	0.42
1:A:255:GLU:HB2	1:A:309:TYR:CE2	2.54	0.42
1:A:105:PHE:CE1	1:A:137:GLY:HA3	2.55	0.42
1:A:356:LYS:HE2	1:A:357:LEU:H	1.84	0.42
1:A:200:LEU:HA	1:A:200:LEU:HD23	1.86	0.41
1:A:300:ASP:HB3	1:A:303:ARG:O	2.20	0.41
1:A:149:LEU:HA	1:A:149:LEU:HD22	1.94	0.41
1:A:124:LEU:HD23	1:A:124:LEU:HA	1.87	0.41
1:A:323:ILE:HG21	1:A:335:MET:SD	2.60	0.41
1:A:113:LEU:HD23	1:A:113:LEU:HA	1.82	0.41
1:A:235:LYS:HG3	1:A:236:ARG:HG3	2.03	0.41
1:A:365:ARG:HA	1:A:365:ARG:HD3	1.66	0.40
1:A:121:ASP:OD1	1:A:123:HIS:ND1	2.52	0.40

Continued on next page...

Continued from previous page...

Atom-1	Atom-2	Interatomic distance (Å)	Clash overlap (Å)
1:A:291:ASP:OD1	1:A:291:ASP:N	2.54	0.40
1:A:180:ILE:HB	1:A:185:PHE:CE1	2.56	0.40
1:A:155:LEU:HA	1:A:155:LEU:HD23	1.81	0.40
1:A:121:ASP:O	1:A:124:LEU:HB2	2.22	0.40
1:A:66:ILE:HD11	1:A:107:MET:HA	2.03	0.40

There are no symmetry-related clashes.

5.3 Torsion angles [i](#)

5.3.1 Protein backbone [i](#)

In the following table, the Percentiles column shows the percent Ramachandran outliers of the chain as a percentile score with respect to all X-ray entries followed by that with respect to entries of similar resolution.

The Analysed column shows the number of residues for which the backbone conformation was analysed, and the total number of residues.

Mol	Chain	Analysed	Favoured	Allowed	Outliers	Percentiles
1	A	335/485 (69%)	313 (93%)	17 (5%)	5 (2%)	13 56

All (5) Ramachandran outliers are listed below:

Mol	Chain	Res	Type
1	A	331	PHE
1	A	47	ARG
1	A	264	SER
1	A	265	GLU
1	A	332	ASN

5.3.2 Protein sidechains [i](#)

In the following table, the Percentiles column shows the percent sidechain outliers of the chain as a percentile score with respect to all X-ray entries followed by that with respect to entries of similar resolution.

The Analysed column shows the number of residues for which the sidechain conformation was analysed, and the total number of residues.

Mol	Chain	Analysed	Rotameric	Outliers	Percentiles
1	A	309/434 (71%)	284 (92%)	25 (8%)	15 52

All (25) residues with a non-rotameric sidechain are listed below:

Mol	Chain	Res	Type
1	A	47	ARG
1	A	48	ASP
1	A	49	GLN
1	A	77	LEU
1	A	101	ASP
1	A	104	ARG
1	A	149	LEU
1	A	166	HIS
1	A	209	GLN
1	A	211	HIS
1	A	234	ARG
1	A	239	GLU
1	A	240	ASN
1	A	274	TRP
1	A	333	VAL
1	A	346	THR
1	A	351	LEU
1	A	356	LYS
1	A	357	LEU
1	A	358	GLU
1	A	362	ARG
1	A	364	LEU
1	A	365	ARG
1	A	370	GLU
1	A	380	ILE

Some sidechains can be flipped to improve hydrogen bonding and reduce clashes. All (5) such sidechains are listed below:

Mol	Chain	Res	Type
1	A	49	GLN
1	A	53	ASN
1	A	134	HIS
1	A	146	ASN
1	A	248	GLN

5.3.3 RNA [i](#)

There are no RNA molecules in this entry.

5.4 Non-standard residues in protein, DNA, RNA chains [i](#)

There are no non-standard protein/DNA/RNA residues in this entry.

5.5 Carbohydrates [i](#)

There are no carbohydrates in this entry.

5.6 Ligand geometry [i](#)

There are no ligands in this entry.

5.7 Other polymers [i](#)

There are no such residues in this entry.

5.8 Polymer linkage issues [i](#)

There are no chain breaks in this entry.

6 Fit of model and data ⓘ

6.1 Protein, DNA and RNA chains ⓘ

In the following table, the column labelled ‘#RSRZ> 2’ contains the number (and percentage) of RSRZ outliers, followed by percent RSRZ outliers for the chain as percentile scores relative to all X-ray entries and entries of similar resolution. The OWAB column contains the minimum, median, 95th percentile and maximum values of the occupancy-weighted average B-factor per residue. The column labelled ‘Q< 0.9’ lists the number of (and percentage) of residues with an average occupancy less than 0.9.

Mol	Chain	Analysed	<RSRZ>	#RSRZ>2	OWAB(Å ²)	Q<0.9
1	A	337/485 (69%)	0.41	29 (8%) 13 12	48, 114, 199, 276	0

All (29) RSRZ outliers are listed below:

Mol	Chain	Res	Type	RSRZ
1	A	332	ASN	5.1
1	A	79	GLN	4.4
1	A	331	PHE	4.3
1	A	313	ILE	3.8
1	A	380	ILE	3.6
1	A	80	CYS	3.4
1	A	96	PHE	3.4
1	A	92	LEU	3.2
1	A	87	PHE	3.0
1	A	294	MET	2.8
1	A	77	LEU	2.7
1	A	168	PHE	2.6
1	A	272	MET	2.6
1	A	95	ILE	2.6
1	A	297	CYS	2.6
1	A	351	LEU	2.4
1	A	76	TYR	2.4
1	A	329	ASP	2.3
1	A	335	MET	2.3
1	A	352	PHE	2.3
1	A	174	LEU	2.3
1	A	339	PHE	2.3
1	A	138	PHE	2.2
1	A	333	VAL	2.2
1	A	186	LEU	2.1
1	A	154	GLU	2.1
1	A	353	PHE	2.1

Continued on next page...

Continued from previous page...

Mol	Chain	Res	Type	RSRZ
1	A	286	VAL	2.1
1	A	295	VAL	2.0

6.2 Non-standard residues in protein, DNA, RNA chains [i](#)

There are no non-standard protein/DNA/RNA residues in this entry.

6.3 Carbohydrates [i](#)

There are no carbohydrates in this entry.

6.4 Ligands [i](#)

There are no ligands in this entry.

6.5 Other polymers [i](#)

There are no such residues in this entry.