



Full wwPDB X-ray Structure Validation Report ⓘ

Feb 1, 2016 – 06:51 PM GMT

PDB ID : 4MXO
Title : human Src kinase bound to kinase inhibitor bosutinib
Authors : Levinson, N.M.; Boxer, S.G.
Deposited on : 2013-09-26
Resolution : 2.10 Å(reported)

This is a Full wwPDB X-ray Structure Validation Report for a publicly released PDB entry.
We welcome your comments at validation@mail.wwpdb.org
A user guide is available at
<http://wwpdb.org/validation/2016/XrayValidationReportHelp>
with specific help available everywhere you see the ⓘ symbol.

The following versions of software and data (see [references ⓘ](#)) were used in the production of this report:

MolProbity : 4.02b-467
Mogul : 1.7 (RC4), CSD as536be (2015)
Xtriage (Phenix) : 1.9-1692
EDS : rb-20026688
Percentile statistics : 20151230.v01 (using entries in the PDB archive December 30th 2015)
Refmac : 5.8.0135
CCP4 : 6.5.0
Ideal geometry (proteins) : Engh & Huber (2001)
Ideal geometry (DNA, RNA) : Parkinson et al. (1996)
Validation Pipeline (wwPDB-VP) : trunk26865

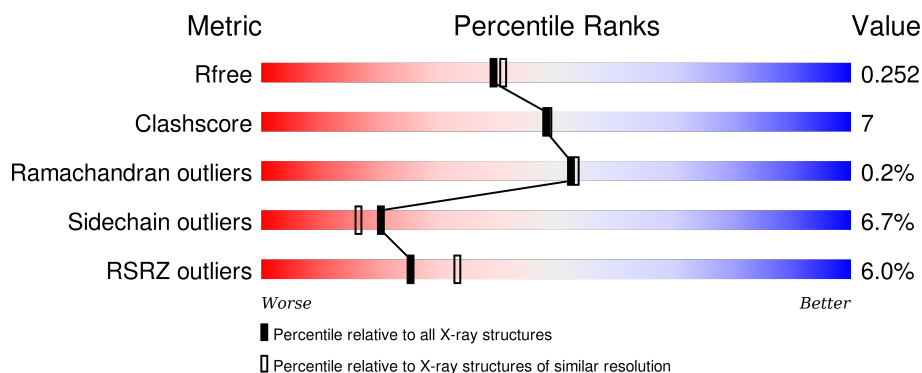
1 Overall quality at a glance

The following experimental techniques were used to determine the structure:

X-RAY DIFFRACTION

The reported resolution of this entry is 2.10 Å.

Percentile scores (ranging between 0-100) for global validation metrics of the entry are shown in the following graphic. The table shows the number of entries on which the scores are based.



Metric	Whole archive (#Entries)	Similar resolution (#Entries, resolution range(Å))
R_{free}	91344	3939 (2.10-2.10)
Clashscore	102246	4460 (2.10-2.10)
Ramachandran outliers	100387	4413 (2.10-2.10)
Sidechain outliers	100360	4414 (2.10-2.10)
RSRZ outliers	91569	3948 (2.10-2.10)

The table below summarises the geometric issues observed across the polymeric chains and their fit to the electron density. The red, orange, yellow and green segments on the lower bar indicate the fraction of residues that contain outliers for ≥ 3 , 2, 1 and 0 types of geometric quality criteria. A grey segment represents the fraction of residues that are not modelled. The numeric value for each fraction is indicated below the corresponding segment, with a dot representing fractions $\leq 5\%$. The upper red bar (where present) indicates the fraction of residues that have poor fit to the electron density. The numeric value is given above the bar.

Mol	Chain	Length	Quality of chain
1	A	286	<div> <div>9%</div> <div>72%</div> <div>20%</div> <div>7%</div> </div>
1	B	286	<div> <div>2%</div> <div>72%</div> <div>19%</div> <div>8%</div> </div>

2 Entry composition

There are 3 unique types of molecules in this entry. The entry contains 4626 atoms, of which 0 are hydrogens and 0 are deuteriums.

In the tables below, the ZeroOcc column contains the number of atoms modelled with zero occupancy, the AltConf column contains the number of residues with at least one atom in alternate conformation and the Trace column contains the number of residues modelled with at most 2 atoms.

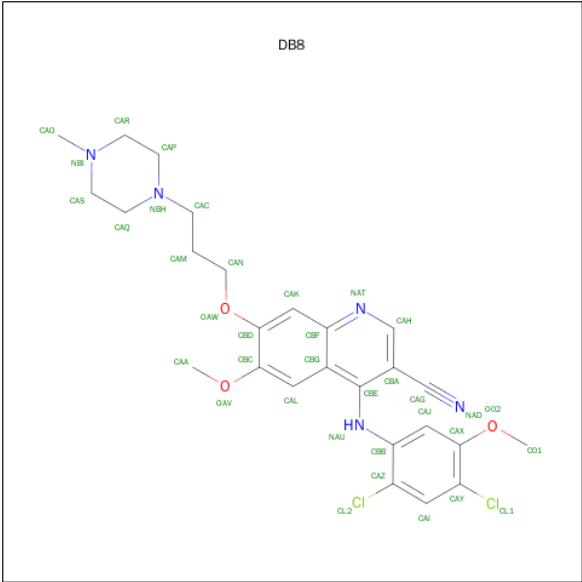
- Molecule 1 is a protein called Proto-oncogene tyrosine-protein kinase Src.

Mol	Chain	Residues	Atoms					ZeroOcc	AltConf	Trace
1	A	266	Total	C	N	O	S	0	0	0
			2144	1377	358	393	16			
1	B	264	Total	C	N	O	S	0	0	0
			2126	1366	355	389	16			

There are 6 discrepancies between the modelled and reference sequences:

Chain	Residue	Modelled	Actual	Comment	Reference
A	248	GLY	-	EXPRESSION TAG	UNP P12931
A	249	HIS	-	EXPRESSION TAG	UNP P12931
A	250	MET	-	EXPRESSION TAG	UNP P12931
B	248	GLY	-	EXPRESSION TAG	UNP P12931
B	249	HIS	-	EXPRESSION TAG	UNP P12931
B	250	MET	-	EXPRESSION TAG	UNP P12931

- Molecule 2 is 4-[(2,4-DICHLORO-5-METHOXYPHENYL)AMINO]-6-METHOXY-7-[3-(4-METHYLPIPERAZIN-1-YL)PROPOXY]QUINOLINE-3-CARBONITRILE (three-letter code: DB8) (formula: C₂₆H₂₉Cl₂N₅O₃).



Mol	Chain	Residues	Atoms					ZeroOcc	AltConf
2	A	1	Total	C	Cl	N	O	0	0
			36	26	2	5	3		
2	B	1	Total	C	Cl	N	O	0	0
			36	26	2	5	3		

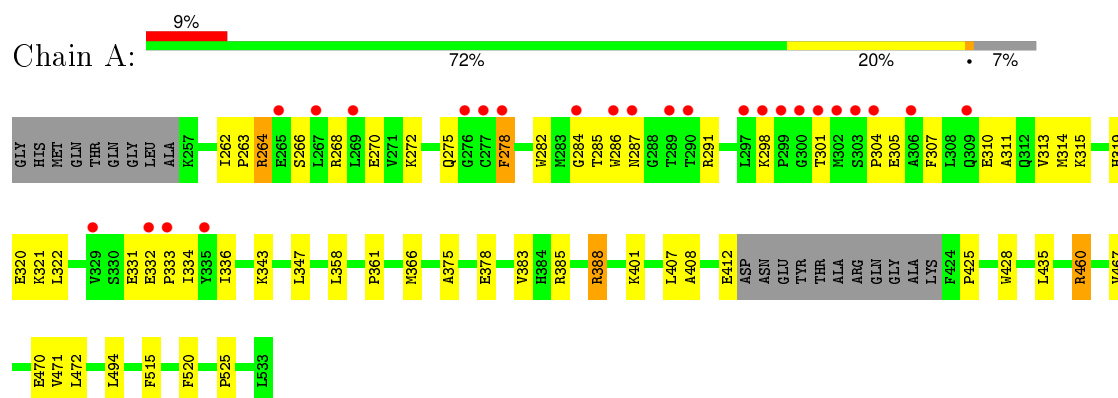
- Molecule 3 is water.

Mol	Chain	Residues	Atoms		ZeroOcc	AltConf
3	A	129	Total	O	0	0
			129	129		
3	B	155	Total	O	0	0
			155	155		

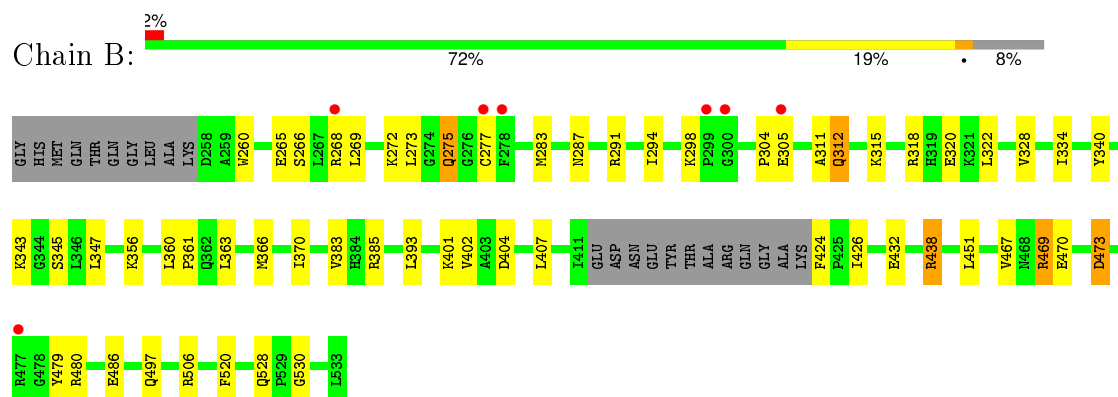
3 Residue-property plots [i](#)

These plots are drawn for all protein, RNA and DNA chains in the entry. The first graphic for a chain summarises the proportions of errors displayed in the second graphic. The second graphic shows the sequence view annotated by issues in geometry and electron density. Residues are color-coded according to the number of geometric quality criteria for which they contain at least one outlier: green = 0, yellow = 1, orange = 2 and red = 3 or more. A red dot above a residue indicates a poor fit to the electron density ($RSRZ > 2$). Stretches of 2 or more consecutive residues without any outlier are shown as a green connector. Residues present in the sample, but not in the model, are shown in grey.

- Molecule 1: Proto-oncogene tyrosine-protein kinase Src



- Molecule 1: Proto-oncogene tyrosine-protein kinase Src



4 Data and refinement statistics

Property	Value	Source
Space group	P 1	Depositor
Cell constants a, b, c, α , β , γ	41.87Å 63.19Å 73.67Å 79.53° 89.31° 90.05°	Depositor
Resolution (Å)	24.91 – 2.10 72.43 – 2.10	Depositor EDS
% Data completeness (in resolution range)	96.1 (24.91-2.10) 90.6 (72.43-2.10)	Depositor EDS
R_{merge}	0.14	Depositor
R_{sym}	(Not available)	Depositor
$\langle I/\sigma(I) \rangle$ ¹	1.89 (at 2.10Å)	Xtriage
Refinement program	PHENIX (phenix.refine: 1.7_650)	Depositor
R, R_{free}	0.210 , 0.254 0.210 , 0.252	Depositor DCC
R_{free} test set	2041 reflections (5.20%)	DCC
Wilson B-factor (Å ²)	24.8	Xtriage
Anisotropy	0.319	Xtriage
Bulk solvent k_{sol} (e/Å ³), B_{sol} (Å ²)	0.37 , 53.6	EDS
Estimated twinning fraction	0.032 for h,-k,-l	Xtriage
L-test for twinning ²	$\langle L \rangle = 0.49$, $\langle L^2 \rangle = 0.32$	Xtriage
Outliers	0 of 41340 reflections	Xtriage
F_o, F_c correlation	0.93	EDS
Total number of atoms	4626	wwPDB-VP
Average B, all atoms (Å ²)	34.0	wwPDB-VP

Xtriage's analysis on translational NCS is as follows: *The largest off-origin peak in the Patterson function is 12.39% of the height of the origin peak. No significant pseudotranslation is detected.*

¹Intensities estimated from amplitudes.

²Theoretical values of $\langle |L| \rangle$, $\langle L^2 \rangle$ for acentric reflections are 0.5, 0.375 respectively for untwinned datasets, and 0.333, 0.2 for perfectly twinned datasets.

5 Model quality [i](#)

5.1 Standard geometry [i](#)

Bond lengths and bond angles in the following residue types are not validated in this section: DB8

The Z score for a bond length (or angle) is the number of standard deviations the observed value is removed from the expected value. A bond length (or angle) with $|Z| > 5$ is considered an outlier worth inspection. RMSZ is the root-mean-square of all Z scores of the bond lengths (or angles).

Mol	Chain	Bond lengths		Bond angles	
		RMSZ	$\# Z > 5$	RMSZ	$\# Z > 5$
1	A	0.40	0/2196	0.55	1/2973 (0.0%)
1	B	0.40	0/2178	0.56	0/2950
All	All	0.40	0/4374	0.56	1/5923 (0.0%)

There are no bond length outliers.

All (1) bond angle outliers are listed below:

Mol	Chain	Res	Type	Atoms	Z	Observed(°)	Ideal(°)
1	A	460	ARG	NE-CZ-NH2	-6.07	117.27	120.30

There are no chirality outliers.

There are no planarity outliers.

5.2 Too-close contacts [i](#)

In the following table, the Non-H and H(model) columns list the number of non-hydrogen atoms and hydrogen atoms in the chain respectively. The H(added) column lists the number of hydrogen atoms added and optimized by MolProbity. The Clashes column lists the number of clashes within the asymmetric unit, whereas Symm-Clashes lists symmetry related clashes.

Mol	Chain	Non-H	H(model)	H(added)	Clashes	Symm-Clashes
1	A	2144	0	2135	29	0
1	B	2126	0	2116	30	0
2	A	36	0	29	2	0
2	B	36	0	29	3	0
3	A	129	0	0	2	0
3	B	155	0	0	1	0
All	All	4626	0	4309	63	0

The all-atom clashscore is defined as the number of clashes found per 1000 atoms (including hydrogen atoms). The all-atom clashscore for this structure is 7.

All (63) close contacts within the same asymmetric unit are listed below, sorted by their clash magnitude.

Atom-1	Atom-2	Interatomic distance (Å)	Clash overlap (Å)
1:B:269:LEU:HD22	1:B:294:ILE:HD13	1.51	0.89
1:B:272:LYS:HE2	1:B:275:GLN:HB2	1.61	0.83
1:A:460:ARG:NH2	3:A:746:HOH:O	2.20	0.73
1:B:260:TRP:CD1	1:B:315:LYS:HE2	2.30	0.66
1:B:363:LEU:HA	1:B:366:MET:HE3	1.77	0.66
1:A:383:VAL:HG22	1:A:385:ARG:HG3	1.77	0.66
1:A:388:ARG:HB3	1:A:428:TRP:CD1	2.32	0.64
1:A:494:LEU:HD22	1:A:515:PHE:CE1	2.37	0.60
1:A:310:GLU:O	1:A:314:MET:HG3	2.01	0.60
1:B:304:PRO:HB3	1:B:334:ILE:HD11	1.84	0.60
2:B:601:DB8:CAG	2:B:601:DB8:CBB	2.80	0.59
1:B:283:MET:HG3	1:B:340:TYR:CZ	2.38	0.58
1:A:266:SER:HB2	1:A:287:ASN:ND2	2.19	0.58
1:A:298:LYS:HB3	1:A:301:THR:OG1	2.05	0.57
1:A:304:PRO:HB3	1:A:334:ILE:HD12	1.86	0.56
1:A:435:LEU:HD21	1:A:472:LEU:HD21	1.89	0.55
1:B:432:GLU:O	1:B:438:ARG:HG3	2.07	0.54
2:A:601:DB8:CAG	2:A:601:DB8:CBB	2.86	0.54
1:B:269:LEU:HD23	1:B:269:LEU:N	2.23	0.53
1:A:332:GLU:HA	1:A:333:PRO:C	2.28	0.52
1:B:320:GLU:O	1:B:401:LYS:HE3	2.09	0.52
1:B:486:GLU:OE1	1:B:530:GLY:HA3	2.09	0.52
1:A:320:GLU:HG3	1:A:321:LYS:HG2	1.91	0.52
1:B:345:SER:HA	1:B:393:LEU:HD23	1.92	0.50
1:A:319:HIS:HB3	1:A:322:LEU:HG	1.94	0.49
1:B:361:PRO:HA	1:B:520:PHE:CE2	2.47	0.49
1:B:383:VAL:HG22	1:B:385:ARG:HG3	1.95	0.48
1:B:370:ILE:HD13	1:B:451:LEU:HD21	1.95	0.48
1:A:304:PRO:HA	1:A:307:PHE:HB3	1.96	0.48
1:B:269:LEU:CD2	1:B:294:ILE:HD13	2.34	0.47
1:A:262:ILE:HB	1:A:263:PRO:HD2	1.96	0.47
1:B:312:GLN:O	1:B:315:LYS:HB2	2.15	0.46
1:B:424:PHE:O	1:B:426:ILE:HD13	2.15	0.46
1:A:311:ALA:HB2	1:A:336:ILE:HD13	1.98	0.46
1:A:311:ALA:O	1:A:315:LYS:HG3	2.16	0.46
1:B:311:ALA:O	1:B:315:LYS:HG3	2.17	0.45
1:A:264:ARG:CZ	1:A:333:PRO:HD2	2.47	0.45

Continued on next page...

Continued from previous page...

Atom-1	Atom-2	Interatomic distance (Å)	Clash overlap (Å)
1:B:266:SER:HB2	1:B:287:ASN:OD1	2.16	0.45
1:B:469:ARG:O	1:B:473:ASP:HB2	2.17	0.44
1:A:520:PHE:O	1:A:525:PRO:HA	2.18	0.44
1:A:467:VAL:O	1:A:471:VAL:HG23	2.18	0.44
1:A:388:ARG:HH21	1:A:425:PRO:HG3	1.82	0.44
1:B:467:VAL:HG22	3:B:836:HOH:O	2.16	0.43
1:A:270:GLU:HG3	1:A:284:GLY:HA2	2.00	0.43
1:B:385:ARG:HD3	1:B:407:LEU:O	2.19	0.43
1:A:385:ARG:HD3	1:A:407:LEU:O	2.19	0.43
1:A:285:THR:HG22	1:A:286:TRP:N	2.33	0.43
1:A:388:ARG:HD3	3:A:709:HOH:O	2.18	0.43
1:B:479:TYR:O	1:B:480:ARG:HD3	2.19	0.42
2:A:601:DB8:HAMA	2:A:601:DB8:HAQ	1.37	0.42
1:A:375:ALA:O	1:A:378:GLU:HB3	2.19	0.42
1:A:358:LEU:HD22	1:A:366:MET:HE1	2.00	0.42
2:B:601:DB8:HAMA	2:B:601:DB8:HAQ	1.63	0.42
1:A:361:PRO:HA	1:A:520:PHE:CE2	2.56	0.41
1:B:393:LEU:HD23	1:B:393:LEU:HA	1.88	0.41
1:B:322:LEU:HD22	1:B:402:VAL:HB	2.02	0.41
1:A:272:LYS:HD3	1:A:282:TRP:CE2	2.55	0.41
1:B:273:LEU:HD13	2:B:601:DB8:CBD	2.51	0.41
1:A:313:VAL:HG11	1:A:408:ALA:HB3	2.03	0.41
1:B:497:GLN:O	1:B:506:ARG:HG3	2.21	0.40
1:B:260:TRP:HB3	1:B:328:VAL:HG23	2.03	0.40
1:B:283:MET:HG3	1:B:340:TYR:CE1	2.56	0.40
1:B:360:LEU:N	1:B:361:PRO:CD	2.85	0.40

There are no symmetry-related clashes.

5.3 Torsion angles

5.3.1 Protein backbone

In the following table, the Percentiles column shows the percent Ramachandran outliers of the chain as a percentile score with respect to all X-ray entries followed by that with respect to entries of similar resolution.

The Analysed column shows the number of residues for which the backbone conformation was analysed, and the total number of residues.

Mol	Chain	Analysed	Favoured	Allowed	Outliers	Percentiles	
1	A	262/286 (92%)	251 (96%)	10 (4%)	1 (0%)	39	37
1	B	260/286 (91%)	251 (96%)	9 (4%)	0	100	100
All	All	522/572 (91%)	502 (96%)	19 (4%)	1 (0%)	52	53

All (1) Ramachandran outliers are listed below:

Mol	Chain	Res	Type
1	A	278	PHE

5.3.2 Protein sidechains ⓘ

In the following table, the Percentiles column shows the percent sidechain outliers of the chain as a percentile score with respect to all X-ray entries followed by that with respect to entries of similar resolution.

The Analysed column shows the number of residues for which the sidechain conformation was analysed, and the total number of residues.

Mol	Chain	Analysed	Rotameric	Outliers	Percentiles	
1	A	231/245 (94%)	218 (94%)	13 (6%)	26	22
1	B	229/245 (94%)	211 (92%)	18 (8%)	15	11
All	All	460/490 (94%)	429 (93%)	31 (7%)	20	16

All (31) residues with a non-rotameric sidechain are listed below:

Mol	Chain	Res	Type
1	A	264	ARG
1	A	268	ARG
1	A	275	GLN
1	A	278	PHE
1	A	291	ARG
1	A	305	GLU
1	A	331	GLU
1	A	343	LYS
1	A	347	LEU
1	A	388	ARG
1	A	401	LYS
1	A	412	GLU
1	A	470	GLU
1	B	265	GLU
1	B	268	ARG

Continued on next page...

Continued from previous page...

Mol	Chain	Res	Type
1	B	275	GLN
1	B	277	CYS
1	B	291	ARG
1	B	298	LYS
1	B	305	GLU
1	B	312	GLN
1	B	318	ARG
1	B	343	LYS
1	B	347	LEU
1	B	356	LYS
1	B	404	ASP
1	B	438	ARG
1	B	469	ARG
1	B	470	GLU
1	B	473	ASP
1	B	528	GLN

Some sidechains can be flipped to improve hydrogen bonding and reduce clashes. All (6) such sidechains are listed below:

Mol	Chain	Res	Type
1	A	287	ASN
1	A	391	ASN
1	A	513	GLN
1	B	391	ASN
1	B	397	ASN
1	B	513	GLN

5.3.3 RNA ⓘ

There are no RNA molecules in this entry.

5.4 Non-standard residues in protein, DNA, RNA chains ⓘ

There are no non-standard protein/DNA/RNA residues in this entry.

5.5 Carbohydrates ⓘ

There are no carbohydrates in this entry.

5.6 Ligand geometry

2 ligands are modelled in this entry.

In the following table, the Counts columns list the number of bonds (or angles) for which Mogul statistics could be retrieved, the number of bonds (or angles) that are observed in the model and the number of bonds (or angles) that are defined in the chemical component dictionary. The Link column lists molecule types, if any, to which the group is linked. The Z score for a bond length (or angle) is the number of standard deviations the observed value is removed from the expected value. A bond length (or angle) with $|Z| > 2$ is considered an outlier worth inspection. RMSZ is the root-mean-square of all Z scores of the bond lengths (or angles).

Mol	Type	Chain	Res	Link	Bond lengths			Bond angles		
					Counts	RMSZ	# Z > 2	Counts	RMSZ	# Z > 2
2	DB8	A	601	-	39,39,39	4.42	20 (51%)	51,54,54	2.16	16 (31%)
2	DB8	B	601	-	39,39,39	4.43	20 (51%)	51,54,54	2.19	15 (29%)

In the following table, the Chirals column lists the number of chiral outliers, the number of chiral centers analysed, the number of these observed in the model and the number defined in the chemical component dictionary. Similar counts are reported in the Torsion and Rings columns. '-' means no outliers of that kind were identified.

Mol	Type	Chain	Res	Link	Chirals	Torsions	Rings
2	DB8	A	601	-	-	0/17/27/27	0/4/4/4
2	DB8	B	601	-	-	0/17/27/27	0/4/4/4

All (40) bond length outliers are listed below:

Mol	Chain	Res	Type	Atoms	Z	Observed(Å)	Ideal(Å)
2	A	601	DB8	CBB-NAU	2.05	1.45	1.39
2	B	601	DB8	CBB-NAU	2.19	1.45	1.39
2	A	601	DB8	CBE-NAU	2.68	1.46	1.38
2	B	601	DB8	CBE-NAU	2.72	1.46	1.38
2	A	601	DB8	CBB-CAZ	3.52	1.49	1.39
2	A	601	DB8	CBD-CBC	3.54	1.48	1.40
2	B	601	DB8	CBF-NAT	3.59	1.44	1.37
2	A	601	DB8	CBA-CAG	3.67	1.49	1.44
2	A	601	DB8	CBF-NAT	3.71	1.44	1.37
2	B	601	DB8	CBD-CBC	3.77	1.48	1.40
2	B	601	DB8	CBB-CAZ	3.90	1.50	1.39
2	B	601	DB8	CBA-CAG	4.02	1.50	1.44
2	B	601	DB8	CAL-CBG	4.25	1.50	1.42
2	A	601	DB8	CAL-CBG	4.47	1.50	1.42
2	A	601	DB8	CAX-CAY	5.38	1.49	1.39
2	B	601	DB8	CAX-CAY	5.48	1.49	1.39

Continued on next page...

Continued from previous page...

Mol	Chain	Res	Type	Atoms	Z	Observed(Å)	Ideal(Å)
2	A	601	DB8	CAJ-CAX	5.74	1.49	1.38
2	A	601	DB8	CBG-CBF	5.76	1.51	1.42
2	B	601	DB8	CBE-CBG	5.90	1.53	1.43
2	B	601	DB8	CAJ-CAX	5.99	1.50	1.38
2	A	601	DB8	CBE-CBG	6.13	1.53	1.43
2	B	601	DB8	CBG-CBF	6.24	1.52	1.42
2	A	601	DB8	CAI-CAZ	6.26	1.49	1.38
2	A	601	DB8	CAI-CAY	6.30	1.49	1.38
2	B	601	DB8	CAI-CAY	6.35	1.49	1.38
2	B	601	DB8	CAI-CAZ	6.40	1.49	1.38
2	A	601	DB8	CAH-NAT	6.65	1.43	1.31
2	B	601	DB8	CAH-NAT	6.73	1.43	1.31
2	A	601	DB8	CAJ-CBB	6.82	1.50	1.39
2	B	601	DB8	CAK-CBF	6.93	1.52	1.41
2	B	601	DB8	CAJ-CBB	7.11	1.50	1.39
2	A	601	DB8	CAK-CBF	7.26	1.52	1.41
2	B	601	DB8	CAL-CBC	7.48	1.50	1.36
2	B	601	DB8	CAK-CBD	7.50	1.50	1.36
2	A	601	DB8	CAL-CBC	7.61	1.50	1.36
2	A	601	DB8	CAK-CBD	7.87	1.50	1.36
2	A	601	DB8	CAH-CBA	9.38	1.49	1.39
2	B	601	DB8	CAH-CBA	9.43	1.49	1.39
2	B	601	DB8	CBE-CBA	10.04	1.51	1.38
2	A	601	DB8	CBE-CBA	10.14	1.51	1.38

All (31) bond angle outliers are listed below:

Mol	Chain	Res	Type	Atoms	Z	Observed(°)	Ideal(°)
2	B	601	DB8	OAV-CBC-CAL	-5.78	117.50	125.25
2	A	601	DB8	OAV-CBC-CAL	-5.00	118.54	125.25
2	B	601	DB8	CAL-CBG-CBE	-3.71	118.95	123.07
2	B	601	DB8	OAW-CBD-CAK	-3.25	119.22	125.21
2	A	601	DB8	O02-CAX-CAJ	-3.06	118.98	124.21
2	A	601	DB8	CBG-CBF-NAT	-2.85	119.85	122.88
2	A	601	DB8	CAL-CBG-CBE	-2.65	120.13	123.07
2	A	601	DB8	OAW-CBD-CAK	-2.53	120.53	125.21
2	B	601	DB8	CBE-NAU-CBB	-2.44	118.05	123.50
2	B	601	DB8	O02-CAX-CAJ	-2.26	120.35	124.21
2	B	601	DB8	CAM-CAC-NBH	-2.26	108.21	113.89
2	B	601	DB8	CBG-CBF-NAT	-2.21	120.52	122.88
2	A	601	DB8	CBE-NAU-CBB	-2.16	118.67	123.50
2	A	601	DB8	CAM-CAC-NBH	-2.07	108.69	113.89

Continued on next page...

Continued from previous page...

Mol	Chain	Res	Type	Atoms	Z	Observed(°)	Ideal(°)
2	A	601	DB8	CAJ-CBB-CAZ	2.09	120.29	118.08
2	B	601	DB8	OAW-CBD-CBC	2.15	120.29	115.78
2	A	601	DB8	CAK-CBF-NAT	2.20	120.38	117.95
2	B	601	DB8	O02-CAX-CAY	2.80	119.82	116.76
2	B	601	DB8	CBA-CBE-NAU	3.12	121.98	118.30
2	A	601	DB8	O02-CAX-CAY	3.34	120.41	116.76
2	A	601	DB8	OAV-CBC-CBD	3.47	120.35	115.40
2	A	601	DB8	CAO-NBI-CAR	3.52	116.11	110.63
2	A	601	DB8	CBA-CBE-NAU	3.60	122.54	118.30
2	B	601	DB8	CAO-NBI-CAR	3.82	116.58	110.63
2	B	601	DB8	CAH-NAT-CBF	3.87	121.36	116.95
2	B	601	DB8	CAC-NBH-CAP	4.21	122.05	111.27
2	B	601	DB8	OAV-CBC-CBD	4.23	121.43	115.40
2	A	601	DB8	CAC-NBH-CAP	4.38	122.50	111.27
2	A	601	DB8	CAH-NAT-CBF	4.62	122.21	116.95
2	A	601	DB8	CAO-NBI-CAS	6.75	121.15	110.63
2	B	601	DB8	CAO-NBI-CAS	6.94	121.44	110.63

There are no chirality outliers.

There are no torsion outliers.

There are no ring outliers.

2 monomers are involved in 5 short contacts:

Mol	Chain	Res	Type	Clashes	Symm-Clashes
2	A	601	DB8	2	0
2	B	601	DB8	3	0

5.7 Other polymers [i](#)

There are no such residues in this entry.

5.8 Polymer linkage issues [i](#)

There are no chain breaks in this entry.

6 Fit of model and data ⓘ

6.1 Protein, DNA and RNA chains ⓘ

In the following table, the column labelled ‘#RSRZ> 2’ contains the number (and percentage) of RSRZ outliers, followed by percent RSRZ outliers for the chain as percentile scores relative to all X-ray entries and entries of similar resolution. The OWAB column contains the minimum, median, 95th percentile and maximum values of the occupancy-weighted average B-factor per residue. The column labelled ‘Q< 0.9’ lists the number of (and percentage) of residues with an average occupancy less than 0.9.

Mol	Chain	Analysed	<RSRZ>	#RSRZ>2	OWAB(Å ²)	Q<0.9
1	A	266/286 (93%)	0.70	25 (9%) 11 14	14, 29, 78, 99	0
1	B	264/286 (92%)	0.43	7 (2%) 58 65	13, 30, 63, 79	0
All	All	530/572 (92%)	0.56	32 (6%) 25 33	13, 29, 70, 99	0

All (32) RSRZ outliers are listed below:

Mol	Chain	Res	Type	RSRZ
1	A	277	CYS	13.0
1	A	278	PHE	10.2
1	B	277	CYS	7.1
1	A	297	LEU	4.6
1	A	301	THR	4.4
1	B	278	PHE	4.2
1	A	333	PRO	4.1
1	A	309	GLN	3.7
1	A	289	THR	3.4
1	A	298	LYS	3.4
1	B	299	PRO	3.3
1	A	286	TRP	3.3
1	A	306	ALA	3.3
1	A	329	VAL	3.2
1	A	299	PRO	3.2
1	A	304	PRO	3.1
1	B	300	GLY	3.0
1	A	267	LEU	2.9
1	A	335	TYR	2.9
1	A	269	LEU	2.8
1	A	300	GLY	2.8
1	A	276	GLY	2.8
1	A	287	ASN	2.6
1	A	290	THR	2.5

Continued on next page...

Continued from previous page...

Mol	Chain	Res	Type	RSRZ
1	B	268	ARG	2.4
1	A	284	GLY	2.4
1	A	332	GLU	2.4
1	A	302	MET	2.3
1	A	303	SER	2.2
1	B	477	ARG	2.2
1	B	305	GLU	2.2
1	A	265	GLU	2.1

6.2 Non-standard residues in protein, DNA, RNA chains [i](#)

There are no non-standard protein/DNA/RNA residues in this entry.

6.3 Carbohydrates [i](#)

There are no carbohydrates in this entry.

6.4 Ligands [i](#)

In the following table, the Atoms column lists the number of modelled atoms in the group and the number defined in the chemical component dictionary. LLDF column lists the quality of electron density of the group with respect to its neighbouring residues in protein, DNA or RNA chains. The B-factors column lists the minimum, median, 95th percentile and maximum values of B factors of atoms in the group. The column labelled 'Q< 0.9' lists the number of atoms with occupancy less than 0.9.

Mol	Type	Chain	Res	Atoms	RSCC	RSR	LLDF	B-factors(\AA^2)	Q<0.9
2	DB8	B	601	36/36	0.94	0.15	0.83	21,28,54,61	0
2	DB8	A	601	36/36	0.94	0.16	0.35	26,33,56,59	0

6.5 Other polymers [i](#)

There are no such residues in this entry.