



Full wwPDB X-ray Structure Validation Report ⓘ

Feb 1, 2016 – 10:50 AM GMT

PDB ID : 3N3T
Title : Crystal structure of putative diguanylate cyclase/phosphodiesterase complex with cyclic di-gmp
Authors : Chang, C.; Xu, X.; Cui, H.; Savchenko, A.; Edwards, A.; Joachimiak, A.; Midwest Center for Structural Genomics (MCSG)
Deposited on : 2010-05-20
Resolution : 2.35 Å(reported)

This is a Full wwPDB X-ray Structure Validation Report for a publicly released PDB entry.
We welcome your comments at validation@mail.wwpdb.org
A user guide is available at
<http://wwpdb.org/validation/2016/XrayValidationReportHelp>
with specific help available everywhere you see the ⓘ symbol.

The following versions of software and data (see [references ⓘ](#)) were used in the production of this report:

MolProbity : 4.02b-467
Mogul : 1.7 (RC4), CSD as536be (2015)
Xtriage (Phenix) : 1.9-1692
EDS : rb-20026688
Percentile statistics : 20151230.v01 (using entries in the PDB archive December 30th 2015)
Refmac : 5.8.0135
CCP4 : 6.5.0
Ideal geometry (proteins) : Engh & Huber (2001)
Ideal geometry (DNA, RNA) : Parkinson et al. (1996)
Validation Pipeline (wwPDB-VP) : trunk26865

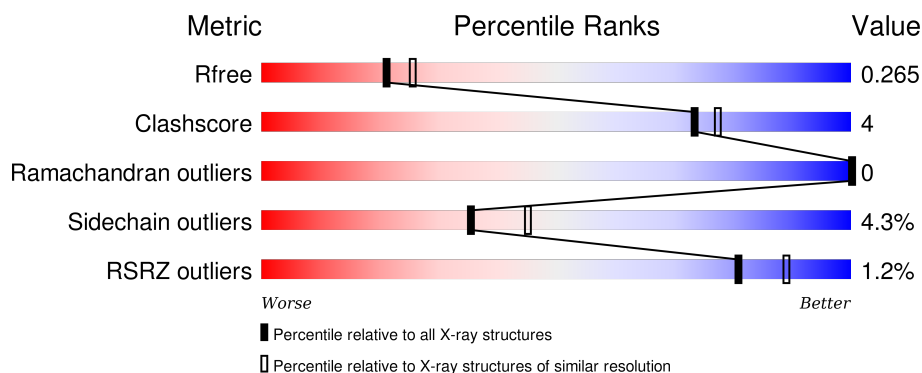
1 Overall quality at a glance

The following experimental techniques were used to determine the structure:

X-RAY DIFFRACTION



The reported resolution of this entry is 2.35 Å.

Percentile scores (ranging between 0-100) for global validation metrics of the entry are shown in the following graphic. The table shows the number of entries on which the scores are based.



Metric	Whole archive (#Entries)	Similar resolution (#Entries, resolution range(Å))
R_{free}	91344	1352 (2.38-2.34)
Clashscore	102246	1456 (2.38-2.34)
Ramachandran outliers	100387	1435 (2.38-2.34)
Sidechain outliers	100360	1436 (2.38-2.34)
RSRZ outliers	91569	1358 (2.38-2.34)

The table below summarises the geometric issues observed across the polymeric chains and their fit to the electron density. The red, orange, yellow and green segments on the lower bar indicate the fraction of residues that contain outliers for ≥ 3 , 2, 1 and 0 types of geometric quality criteria. A grey segment represents the fraction of residues that are not modelled. The numeric value for each fraction is indicated below the corresponding segment, with a dot representing fractions $\leq 5\%$. The upper red bar (where present) indicates the fraction of residues that have poor fit to the electron density. The numeric value is given above the bar.

Mol	Chain	Length	Quality of chain
1	A	294	 80% 8% • 12%
1	B	294	 77% 10% • 11%

2 Entry composition

There are 5 unique types of molecules in this entry. The entry contains 4366 atoms, of which 0 are hydrogens and 0 are deuteriums.

In the tables below, the ZeroOcc column contains the number of atoms modelled with zero occupancy, the AltConf column contains the number of residues with at least one atom in alternate conformation and the Trace column contains the number of residues modelled with at most 2 atoms.

- Molecule 1 is a protein called PUTATIVE DIGUANYLATE CYCLASE/PHOSPHODIESTERASE.

Mol	Chain	Residues	Atoms						ZeroOcc	AltConf	Trace
1	A	260	Total	C	N	O	S	Se	0	3	0
			2033	1269	370	384	5	5			
1	B	261	Total	C	N	O	S	Se	0	2	0
			2011	1254	362	385	5	5			

There are 44 discrepancies between the modelled and reference sequences:

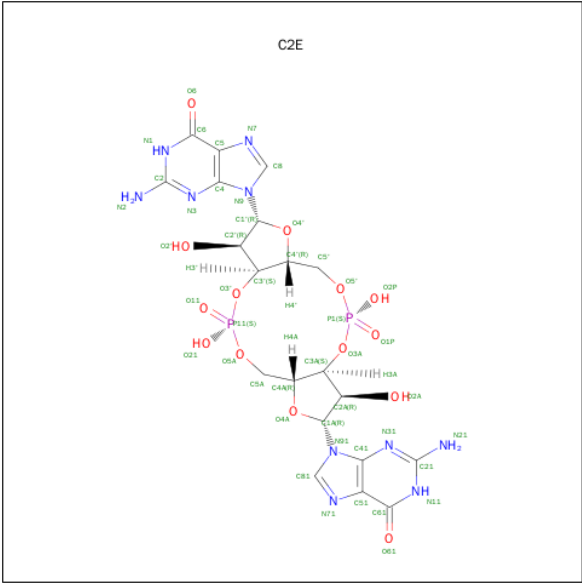
Chain	Residue	Modelled	Actual	Comment	Reference
A	465	MSE	-	EXPRESSION TAG	UNP Q3SJE6
A	466	GLY	-	EXPRESSION TAG	UNP Q3SJE6
A	467	SER	-	EXPRESSION TAG	UNP Q3SJE6
A	468	SER	-	EXPRESSION TAG	UNP Q3SJE6
A	469	HIS	-	EXPRESSION TAG	UNP Q3SJE6
A	470	HIS	-	EXPRESSION TAG	UNP Q3SJE6
A	471	HIS	-	EXPRESSION TAG	UNP Q3SJE6
A	472	HIS	-	EXPRESSION TAG	UNP Q3SJE6
A	473	HIS	-	EXPRESSION TAG	UNP Q3SJE6
A	474	HIS	-	EXPRESSION TAG	UNP Q3SJE6
A	475	SER	-	EXPRESSION TAG	UNP Q3SJE6
A	476	SER	-	EXPRESSION TAG	UNP Q3SJE6
A	477	GLY	-	EXPRESSION TAG	UNP Q3SJE6
A	478	ARG	-	EXPRESSION TAG	UNP Q3SJE6
A	479	GLU	-	EXPRESSION TAG	UNP Q3SJE6
A	480	ASN	-	EXPRESSION TAG	UNP Q3SJE6
A	481	LEU	-	EXPRESSION TAG	UNP Q3SJE6
A	482	TYR	-	EXPRESSION TAG	UNP Q3SJE6
A	483	PHE	-	EXPRESSION TAG	UNP Q3SJE6
A	484	GLN	-	EXPRESSION TAG	UNP Q3SJE6
A	485	GLY	-	EXPRESSION TAG	UNP Q3SJE6
A	486	HIS	-	EXPRESSION TAG	UNP Q3SJE6
B	465	MSE	-	EXPRESSION TAG	UNP Q3SJE6
B	466	GLY	-	EXPRESSION TAG	UNP Q3SJE6

Continued on next page...

Continued from previous page...

Chain	Residue	Modelled	Actual	Comment	Reference
B	467	SER	-	EXPRESSION TAG	UNP Q3SJE6
B	468	SER	-	EXPRESSION TAG	UNP Q3SJE6
B	469	HIS	-	EXPRESSION TAG	UNP Q3SJE6
B	470	HIS	-	EXPRESSION TAG	UNP Q3SJE6
B	471	HIS	-	EXPRESSION TAG	UNP Q3SJE6
B	472	HIS	-	EXPRESSION TAG	UNP Q3SJE6
B	473	HIS	-	EXPRESSION TAG	UNP Q3SJE6
B	474	HIS	-	EXPRESSION TAG	UNP Q3SJE6
B	475	SER	-	EXPRESSION TAG	UNP Q3SJE6
B	476	SER	-	EXPRESSION TAG	UNP Q3SJE6
B	477	GLY	-	EXPRESSION TAG	UNP Q3SJE6
B	478	ARG	-	EXPRESSION TAG	UNP Q3SJE6
B	479	GLU	-	EXPRESSION TAG	UNP Q3SJE6
B	480	ASN	-	EXPRESSION TAG	UNP Q3SJE6
B	481	LEU	-	EXPRESSION TAG	UNP Q3SJE6
B	482	TYR	-	EXPRESSION TAG	UNP Q3SJE6
B	483	PHE	-	EXPRESSION TAG	UNP Q3SJE6
B	484	GLN	-	EXPRESSION TAG	UNP Q3SJE6
B	485	GLY	-	EXPRESSION TAG	UNP Q3SJE6
B	486	HIS	-	EXPRESSION TAG	UNP Q3SJE6

- Molecule 2 is 9,9'-[(2R,3R,3AS,5S,7AR,9R,10R,10AS,12S,14AR)-3,5,10,12-TETRAHYDRO XY-5,12-DIOXIDOOCTAHYDRO-2H,7H-DIFURO[3,2-D:3',2'-J][1,3,7,9,2,8]TETRAOXA DIPHOSPHACYCLODODECINE-2,9-DIYL]BIS(2-AMINO-1,9-DIHYDRO-6H-PURIN-6-ONE) (three-letter code: C2E) (formula: C₂₀H₂₄N₁₀O₁₄P₂).



Mol	Chain	Residues	Atoms					ZeroOcc	AltConf
2	A	1	Total	C	N	O	P	0	0
			46	20	10	14	2		
2	B	1	Total	C	N	O	P	0	0
			46	20	10	14	2		

- Molecule 3 is MAGNESIUM ION (three-letter code: MG) (formula: Mg).

Mol	Chain	Residues	Atoms		ZeroOcc	AltConf
3	B	2	Total	Mg	0	0
			2	2		
3	A	2	Total	Mg	0	0
			2	2		

- Molecule 4 is CHLORIDE ION (three-letter code: CL) (formula: Cl).

Mol	Chain	Residues	Atoms		ZeroOcc	AltConf
4	A	1	Total	Cl	0	0
			1	1		

- Molecule 5 is water.

Mol	Chain	Residues	Atoms		ZeroOcc	AltConf
5	A	122	Total	O	0	0
			122	122		
5	B	103	Total	O	0	0
			103	103		

● Molecule 1: PUTATIVE DIGUANYLATE CYCLASE/PHOSPHODIESTERASE



4 Data and refinement statistics

Property	Value	Source
Space group	P 21 21 21	Depositor
Cell constants a, b, c, α , β , γ	51.56 Å 63.20 Å 173.99 Å 90.00° 90.00° 90.00°	Depositor
Resolution (Å)	39.95 – 2.35 39.95 – 2.35	Depositor EDS
% Data completeness (in resolution range)	99.4 (39.95-2.35) 99.4 (39.95-2.35)	Depositor EDS
R_{merge}	0.10	Depositor
R_{sym}	(Not available)	Depositor
$\langle I/\sigma(I) \rangle$ ¹	2.60 (at 2.34 Å)	Xtriage
Refinement program	REFMAC 5.5.0109	Depositor
R, R_{free}	0.184 , 0.254 0.198 , 0.265	Depositor DCC
R_{free} test set	1239 reflections (5.38%)	DCC
Wilson B-factor (Å ²)	34.4	Xtriage
Anisotropy	0.859	Xtriage
Bulk solvent k_{sol} (e/Å ³), B_{sol} (Å ²)	0.31 , 37.9	EDS
Estimated twinning fraction	No twinning to report.	Xtriage
L-test for twinning ²	$\langle L \rangle = 0.49$, $\langle L^2 \rangle = 0.32$	Xtriage
Outliers	0 of 24286 reflections	Xtriage
F_o, F_c correlation	0.94	EDS
Total number of atoms	4366	wwPDB-VP
Average B, all atoms (Å ²)	30.0	wwPDB-VP

Xtriage's analysis on translational NCS is as follows: *The largest off-origin peak in the Patterson function is 4.08% of the height of the origin peak. No significant pseudotranslation is detected.*

¹Intensities estimated from amplitudes.

²Theoretical values of $\langle |L| \rangle$, $\langle L^2 \rangle$ for acentric reflections are 0.5, 0.375 respectively for untwinned datasets, and 0.333, 0.2 for perfectly twinned datasets.

5 Model quality [i](#)

5.1 Standard geometry [i](#)

Bond lengths and bond angles in the following residue types are not validated in this section: MG, CL, C2E

The Z score for a bond length (or angle) is the number of standard deviations the observed value is removed from the expected value. A bond length (or angle) with $|Z| > 5$ is considered an outlier worth inspection. RMSZ is the root-mean-square of all Z scores of the bond lengths (or angles).

Mol	Chain	Bond lengths		Bond angles	
		RMSZ	$\# Z > 5$	RMSZ	$\# Z > 5$
1	A	0.65	0/2059	0.69	0/2783
1	B	0.68	0/2039	0.73	1/2757 (0.0%)
All	All	0.67	0/4098	0.71	1/5540 (0.0%)

There are no bond length outliers.

All (1) bond angle outliers are listed below:

Mol	Chain	Res	Type	Atoms	Z	Observed($^{\circ}$)	Ideal($^{\circ}$)
1	B	655	LEU	CA-CB-CG	-5.65	102.30	115.30

There are no chirality outliers.

There are no planarity outliers.

5.2 Too-close contacts [i](#)

In the following table, the Non-H and H(model) columns list the number of non-hydrogen atoms and hydrogen atoms in the chain respectively. The H(added) column lists the number of hydrogen atoms added and optimized by MolProbity. The Clashes column lists the number of clashes within the asymmetric unit, whereas Symm-Clashes lists symmetry related clashes.

Mol	Chain	Non-H	H(model)	H(added)	Clashes	Symm-Clashes
1	A	2033	0	2025	15	0
1	B	2011	0	1989	20	0
2	A	46	0	22	2	0
2	B	46	0	22	1	0
3	A	2	0	0	0	0
3	B	2	0	0	0	0
4	A	1	0	0	0	0
5	A	122	0	0	1	0

Continued on next page...

Continued from previous page...

Mol	Chain	Non-H	H(model)	H(added)	Clashes	Symm-Clashes
5	B	103	0	0	1	0
All	All	4366	0	4058	34	0

The all-atom clashscore is defined as the number of clashes found per 1000 atoms (including hydrogen atoms). The all-atom clashscore for this structure is 4.

All (34) close contacts within the same asymmetric unit are listed below, sorted by their clash magnitude.

Atom-1	Atom-2	Interatomic distance (Å)	Clash overlap (Å)
1:B:636:LEU:HD13	1:B:643:LEU:HD21	1.64	0.79
1:B:552:VAL:HG12	5:B:207:HOH:O	1.84	0.77
1:A:509:GLN:OE1	2:A:801:C2E:H81	1.87	0.74
1:B:614:GLU:HG3	1:B:642:ARG:HB2	1.77	0.65
1:A:685:ILE:HG12	1:B:656:SER:HA	1.80	0.64
1:B:585:ILE:HD11	1:B:615:LEU:HD22	1.80	0.63
1:B:495:LEU:HD23	1:B:550:LEU:HD23	1.80	0.63
1:A:664[A]:HIS:CD2	1:A:664[A]:HIS:H	2.21	0.58
1:B:636:LEU:HD13	1:B:643:LEU:CD2	2.35	0.56
1:B:668:ILE:HG21	1:B:686:VAL:HG22	1.90	0.53
1:B:720:GLU:HB3	1:B:721:PHE:CD2	2.44	0.53
1:B:668:ILE:O	1:B:703:GLU:HG3	2.10	0.52
1:A:600:ASP:OD1	1:A:639[B]:ARG:NH1	2.43	0.52
1:A:664[A]:HIS:CD2	1:A:664[A]:HIS:N	2.79	0.50
1:B:609:ARG:HG2	1:B:611:ASP:OD1	2.11	0.50
1:B:497:GLN:HG2	1:B:501:ARG:HD2	1.91	0.50
1:B:554:LEU:O	1:B:554:LEU:HD12	2.12	0.50
1:A:580:THR:HG21	1:A:642:ARG:HH12	1.77	0.50
1:A:525:LEU:HD21	2:A:801:C2E:H511	1.95	0.49
1:B:504:LEU:CD1	1:B:554:LEU:HD13	2.43	0.48
1:A:720:GLU:OE1	5:A:218:HOH:O	2.21	0.46
1:B:509:GLN:OE1	2:B:801:C2E:H81	2.16	0.46
1:A:566:LEU:HB2	1:A:581:LEU:HD12	1.98	0.46
1:A:643:LEU:H	1:A:664[A]:HIS:CD2	2.34	0.45
1:B:552:VAL:HG13	1:B:553:ALA:N	2.32	0.45
1:A:635:ALA:O	1:A:639[A]:ARG:HG2	2.17	0.45
1:B:555:SER:OG	1:B:589:GLN:NE2	2.50	0.45
1:A:670:GLN:O	1:A:674:ARG:HG3	2.16	0.45
1:A:657:TYR:HB3	1:A:661:LEU:HD12	2.01	0.42
1:B:582:SER:HA	1:B:614:GLU:O	2.20	0.42
1:B:636:LEU:CD1	1:B:643:LEU:HD21	2.41	0.42
1:A:509:GLN:O	1:A:522:GLY:HA2	2.20	0.41

Continued on next page...

Continued from previous page...

Atom-1	Atom-2	Interatomic distance (Å)	Clash overlap (Å)
1:B:582:SER:HB3	1:B:614:GLU:HB3	2.02	0.40
1:A:667:LYS:HA	1:A:701:VAL:O	2.21	0.40

There are no symmetry-related clashes.

5.3 Torsion angles [i](#)

5.3.1 Protein backbone [i](#)

In the following table, the Percentiles column shows the percent Ramachandran outliers of the chain as a percentile score with respect to all X-ray entries followed by that with respect to entries of similar resolution.

The Analysed column shows the number of residues for which the backbone conformation was analysed, and the total number of residues.

Mol	Chain	Analysed	Favoured	Allowed	Outliers	Percentiles	
1	A	261/294 (89%)	254 (97%)	7 (3%)	0	100	100
1	B	261/294 (89%)	258 (99%)	3 (1%)	0	100	100
All	All	522/588 (89%)	512 (98%)	10 (2%)	0	100	100

There are no Ramachandran outliers to report.

5.3.2 Protein sidechains [i](#)

In the following table, the Percentiles column shows the percent sidechain outliers of the chain as a percentile score with respect to all X-ray entries followed by that with respect to entries of similar resolution.

The Analysed column shows the number of residues for which the sidechain conformation was analysed, and the total number of residues.

Mol	Chain	Analysed	Rotameric	Outliers	Percentiles	
1	A	213/236 (90%)	205 (96%)	8 (4%)	40	52
1	B	210/236 (89%)	199 (95%)	11 (5%)	29	35
All	All	423/472 (90%)	404 (96%)	19 (4%)	35	43

All (19) residues with a non-rotameric sidechain are listed below:

Mol	Chain	Res	Type
1	A	582	SER
1	A	610	PRO
1	A	627	ASP
1	A	664[A]	HIS
1	A	664[B]	HIS
1	A	674	ARG
1	A	684	GLN
1	A	743	GLN
1	B	494	ARG
1	B	505	VAL
1	B	547	ASP
1	B	554	LEU
1	B	597	ARG
1	B	643	LEU
1	B	674	ARG
1	B	703	GLU
1	B	717	ARG
1	B	720	GLU
1	B	738	SER

Some sidechains can be flipped to improve hydrogen bonding and reduce clashes. All (1) such sidechains are listed below:

Mol	Chain	Res	Type
1	B	589	GLN

5.3.3 RNA [i](#)

There are no RNA molecules in this entry.

5.4 Non-standard residues in protein, DNA, RNA chains [i](#)

There are no non-standard protein/DNA/RNA residues in this entry.

5.5 Carbohydrates [i](#)

There are no carbohydrates in this entry.

5.6 Ligand geometry [i](#)

Of 7 ligands modelled in this entry, 5 are monoatomic - leaving 2 for Mogul analysis.

In the following table, the Counts columns list the number of bonds (or angles) for which Mogul statistics could be retrieved, the number of bonds (or angles) that are observed in the model and the number of bonds (or angles) that are defined in the chemical component dictionary. The Link column lists molecule types, if any, to which the group is linked. The Z score for a bond length (or angle) is the number of standard deviations the observed value is removed from the expected value. A bond length (or angle) with $|Z| > 2$ is considered an outlier worth inspection. RMSZ is the root-mean-square of all Z scores of the bond lengths (or angles).

Mol	Type	Chain	Res	Link	Bond lengths			Bond angles		
					Counts	RMSZ	$\# Z > 2$	Counts	RMSZ	$\# Z > 2$
2	C2E	A	801	3	42,52,52	1.21	3 (7%)	50,82,82	1.93	15 (30%)
2	C2E	B	801	3	42,52,52	1.20	4 (9%)	50,82,82	1.99	16 (32%)

In the following table, the Chirals column lists the number of chiral outliers, the number of chiral centers analysed, the number of these observed in the model and the number defined in the chemical component dictionary. Similar counts are reported in the Torsion and Rings columns. '-' means no outliers of that kind were identified.

Mol	Type	Chain	Res	Link	Chirals	Torsions	Rings
2	C2E	A	801	3	-	0/22/62/62	0/6/7/7
2	C2E	B	801	3	-	0/22/62/62	0/6/7/7

All (7) bond length outliers are listed below:

Mol	Chain	Res	Type	Atoms	Z	Observed(Å)	Ideal(Å)
2	B	801	C2E	O4'-C1'	2.18	1.44	1.41
2	B	801	C2E	O4A-C1A	2.78	1.44	1.41
2	A	801	C2E	O4A-C1A	2.99	1.45	1.41
2	A	801	C2E	C5-C4	3.22	1.47	1.40
2	B	801	C2E	C5-C4	3.56	1.48	1.40
2	B	801	C2E	C61-C51	3.88	1.49	1.41
2	A	801	C2E	C61-C51	4.58	1.50	1.41

All (31) bond angle outliers are listed below:

Mol	Chain	Res	Type	Atoms	Z	Observed(°)	Ideal(°)
2	A	801	C2E	C2'-C1'-N9	-4.74	107.05	114.29
2	B	801	C2E	C2'-C1'-N9	-4.66	107.17	114.29
2	B	801	C2E	N3-C2-N1	-4.33	120.86	127.44
2	B	801	C2E	C51-C61-N11	-4.27	117.75	123.59
2	A	801	C2E	N3-C2-N1	-4.20	121.05	127.44
2	A	801	C2E	C51-C61-N11	-4.09	118.00	123.59
2	B	801	C2E	C4-C5-N7	-3.54	106.22	109.48
2	B	801	C2E	N31-C21-N11	-3.44	122.20	127.44

Continued on next page...

Continued from previous page...

Mol	Chain	Res	Type	Atoms	Z	Observed(°)	Ideal(°)
2	A	801	C2E	N31-C21-N11	-3.43	122.22	127.44
2	A	801	C2E	C6-C5-C4	-3.09	117.20	120.90
2	B	801	C2E	C5A-C4A-C3A	-2.97	103.62	114.31
2	A	801	C2E	C41-C51-N71	-2.88	106.83	109.48
2	A	801	C2E	C1'-N9-C4	-2.82	122.68	126.94
2	A	801	C2E	C4-C5-N7	-2.81	106.89	109.48
2	B	801	C2E	C5-C6-N1	-2.73	119.86	123.59
2	B	801	C2E	O21-P11-O5A	-2.53	95.73	108.46
2	A	801	C2E	C5-C6-N1	-2.53	120.14	123.59
2	B	801	C2E	C61-C51-C41	-2.33	118.11	120.90
2	A	801	C2E	C5A-C4A-C3A	-2.17	106.51	114.31
2	B	801	C2E	C6-C5-C4	-2.14	118.34	120.90
2	B	801	C2E	C41-C51-N71	-2.13	107.52	109.48
2	A	801	C2E	C61-C51-C41	-2.01	118.49	120.90
2	B	801	C2E	N2-C2-N1	2.17	120.79	117.20
2	A	801	C2E	O4A-C1A-N91	2.62	113.58	108.10
2	B	801	C2E	O4A-C1A-N91	2.71	113.77	108.10
2	A	801	C2E	O4'-C1'-N9	2.76	113.88	108.10
2	B	801	C2E	O4'-C1'-N9	2.91	114.20	108.10
2	A	801	C2E	C61-N11-C21	3.44	120.71	115.94
2	B	801	C2E	C61-N11-C21	3.65	121.00	115.94
2	B	801	C2E	C6-N1-C2	4.02	121.52	115.94
2	A	801	C2E	C6-N1-C2	4.25	121.83	115.94

There are no chirality outliers.

There are no torsion outliers.

There are no ring outliers.

2 monomers are involved in 3 short contacts:

Mol	Chain	Res	Type	Clashes	Symm-Clashes
2	A	801	C2E	2	0
2	B	801	C2E	1	0

5.7 Other polymers

There are no such residues in this entry.

5.8 Polymer linkage issues

There are no chain breaks in this entry.

6 Fit of model and data [i](#)

6.1 Protein, DNA and RNA chains [i](#)

In the following table, the column labelled ‘#RSRZ> 2’ contains the number (and percentage) of RSRZ outliers, followed by percent RSRZ outliers for the chain as percentile scores relative to all X-ray entries and entries of similar resolution. The OWAB column contains the minimum, median, 95th percentile and maximum values of the occupancy-weighted average B-factor per residue. The column labelled ‘Q< 0.9’ lists the number of (and percentage) of residues with an average occupancy less than 0.9.

Mol	Chain	Analysed	<RSRZ>	#RSRZ>2	OWAB(Å ²)	Q<0.9
1	A	255/294 (86%)	0.02	1 (0%) 93 97	19, 28, 45, 70	0
1	B	256/294 (87%)	0.02	5 (1%) 68 79	19, 28, 42, 80	0
All	All	511/588 (86%)	0.02	6 (1%) 81 89	19, 28, 43, 80	0

All (6) RSRZ outliers are listed below:

Mol	Chain	Res	Type	RSRZ
1	B	486	HIS	3.1
1	B	533	ARG	2.8
1	A	488	ARG	2.4
1	B	531	PRO	2.4
1	B	532	GLU	2.3
1	B	539	SER	2.1

6.2 Non-standard residues in protein, DNA, RNA chains [i](#)

There are no non-standard protein/DNA/RNA residues in this entry.

6.3 Carbohydrates [i](#)

There are no carbohydrates in this entry.

6.4 Ligands [i](#)

In the following table, the Atoms column lists the number of modelled atoms in the group and the number defined in the chemical component dictionary. LLDF column lists the quality of electron density of the group with respect to its neighbouring residues in protein, DNA or RNA chains. The B-factors column lists the minimum, median, 95th percentile and maximum values of B factors

of atoms in the group. The column labelled 'Q< 0.9' lists the number of atoms with occupancy less than 0.9.

Mol	Type	Chain	Res	Atoms	RSCC	RSR	LLDF	B-factors(\AA^2)	Q<0.9
3	MG	B	802	1/1	0.87	0.15	1.73	30,30,30,30	0
4	CL	A	804	1/1	0.99	0.16	1.41	44,44,44,44	0
2	C2E	A	801	46/46	0.91	0.17	0.77	56,63,69,70	0
2	C2E	B	801	46/46	0.96	0.12	-0.06	31,42,47,48	0
3	MG	B	803	1/1	0.96	0.07	-	42,42,42,42	0
3	MG	A	803	1/1	0.93	0.11	-	62,62,62,62	0
3	MG	A	802	1/1	0.96	0.17	-	35,35,35,35	0

6.5 Other polymers [i](#)

There are no such residues in this entry.