



# Full wwPDB X-ray Structure Validation Report ⓘ

Jan 31, 2016 – 09:04 PM GMT

PDB ID : 1NC2  
Title : Crystal Structure of Monoclonal Antibody 2D12.5 Fab Complexed with Y-DOTA  
Authors : Corneillie, T.M.; Fisher, A.J.; Meares, C.F.  
Deposited on : 2002-12-04  
Resolution : 2.10 Å(reported)

This is a Full wwPDB X-ray Structure Validation Report for a publicly released PDB entry.  
We welcome your comments at [validation@mail.wwpdb.org](mailto:validation@mail.wwpdb.org)  
A user guide is available at  
<http://wwpdb.org/validation/2016/XrayValidationReportHelp>  
with specific help available everywhere you see the ⓘ symbol.

---

The following versions of software and data (see [references ⓘ](#)) were used in the production of this report:

MolProbity : 4.02b-467  
Mogul : 1.7 (RC4), CSD as536be (2015)  
Xtriage (Phenix) : 1.9-1692  
EDS : rb-20026688  
Percentile statistics : 20151230.v01 (using entries in the PDB archive December 30th 2015)  
Refmac : 5.8.0135  
CCP4 : 6.5.0  
Ideal geometry (proteins) : Engh & Huber (2001)  
Ideal geometry (DNA, RNA) : Parkinson et al. (1996)  
Validation Pipeline (wwPDB-VP) : trunk26865

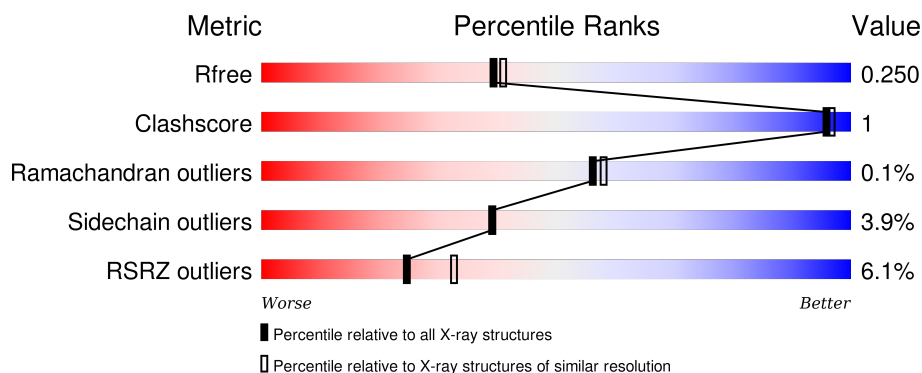
# 1 Overall quality at a glance

The following experimental techniques were used to determine the structure:

## *X-RAY DIFFRACTION*

The reported resolution of this entry is 2.10 Å.

Percentile scores (ranging between 0-100) for global validation metrics of the entry are shown in the following graphic. The table shows the number of entries on which the scores are based.



Metric	Whole archive (#Entries)	Similar resolution (#Entries, resolution range(Å))
$R_{free}$	91344	3939 (2.10-2.10)
Clashscore	102246	4460 (2.10-2.10)
Ramachandran outliers	100387	4413 (2.10-2.10)
Sidechain outliers	100360	4414 (2.10-2.10)
RSRZ outliers	91569	3948 (2.10-2.10)

The table below summarises the geometric issues observed across the polymeric chains and their fit to the electron density. The red, orange, yellow and green segments on the lower bar indicate the fraction of residues that contain outliers for  $\geq 3$ , 2, 1 and 0 types of geometric quality criteria. A grey segment represents the fraction of residues that are not modelled. The numeric value for each fraction is indicated below the corresponding segment, with a dot representing fractions  $\leq 5\%$ . The upper red bar (where present) indicates the fraction of residues that have poor fit to the electron density. The numeric value is given above the bar.

Mol	Chain	Length	Quality of chain
1	A	215	<div> <div>10%</div> <div> <div></div> <div>90%</div> <div>8%</div> <div>.</div> </div> </div>
1	C	215	<div> <div>3%</div> <div> <div></div> <div>94%</div> <div>6%</div> </div> </div>
2	B	221	<div> <div>6%</div> <div> <div></div> <div>90%</div> <div>8%</div> <div>..</div> </div> </div>
3	D	221	<div> <div>5%</div> <div> <div></div> <div>90%</div> <div>7%</div> <div>.</div> </div> </div>

The following table lists non-polymeric compounds, carbohydrate monomers and non-standard

residues in protein, DNA, RNA chains that are outliers for geometric or electron-density-fit criteria:

Mol	Type	Chain	Res	Chirality	Geometry	Clashes	Electron density
4	NAG	D	400	-	-	-	X

## 2 Entry composition

There are 8 unique types of molecules in this entry. The entry contains 6985 atoms, of which 0 are hydrogens and 0 are deuteriums.

In the tables below, the ZeroOcc column contains the number of atoms modelled with zero occupancy, the AltConf column contains the number of residues with at least one atom in alternate conformation and the Trace column contains the number of residues modelled with at most 2 atoms.

- Molecule 1 is a protein called MONOCLONAL ANTIBODY 2D12.5, LAMBDA LIGHT CHAIN.

Mol	Chain	Residues	Atoms					ZeroOcc	AltConf	Trace
1	A	211	Total	C	N	O	S	0	0	0
			1600	1001	270	323	6			
1	C	215	Total	C	N	O	S	0	0	0
			1627	1015	274	331	7			

- Molecule 2 is a protein called MONOCLONAL ANTIBODY 2D12.5, IGG1 GAMMA HEAVY CHAIN.

Mol	Chain	Residues	Atoms					ZeroOcc	AltConf	Trace
2	B	219	Total	C	N	O	S	0	0	0
			1658	1055	273	323	7			

- Molecule 3 is a protein called MONOCLONAL ANTIBODY 2D12.5, IGG1 GAMMA HEAVY CHAIN.

Mol	Chain	Residues	Atoms					ZeroOcc	AltConf	Trace
3	D	215	Total	C	N	O	S	0	0	0
			1634	1040	268	318	8			

- Molecule 4 is SUGAR (N-ACETYL-D-GLUCOSAMINE) (three-letter code: NAG) (formula: C<sub>8</sub>H<sub>15</sub>NO<sub>6</sub>).



Mol	Chain	Residues	Atoms				ZeroOcc	AltConf
4	D	1	Total	C	N	O	0	0
			14	8	1	5		

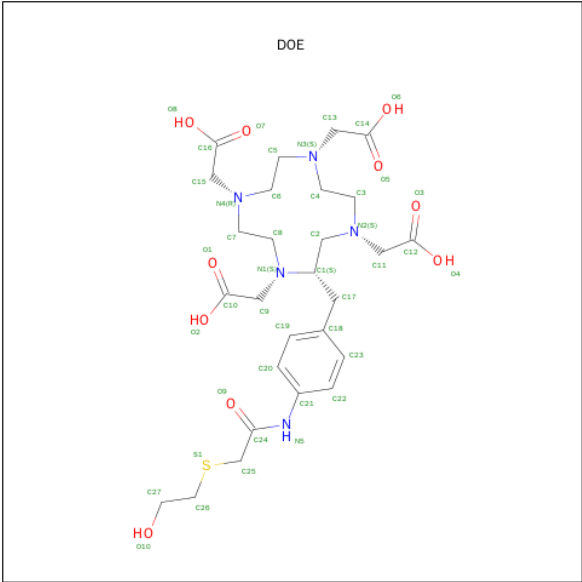
- Molecule 5 is YTTRIUM (III) ION (three-letter code: YT3) (formula: Y).

Mol	Chain	Residues	Atoms		ZeroOcc	AltConf
5	B	1	Total	Y	0	0
			1	1		
5	D	1	Total	Y	0	0
			1	1		

- Molecule 6 is CHLORIDE ION (three-letter code: CL) (formula: Cl).

Mol	Chain	Residues	Atoms		ZeroOcc	AltConf
6	A	1	Total	Cl	0	0
			1	1		
6	C	1	Total	Cl	0	0
			1	1		

- Molecule 7 is (S)-2-(4-(2-(2-HYDROXYETHYLTHIO)-ACETAMIDO)-BENZYL)-1,4,7,10-TETRAAZACYCLODODECANE-N,N',N'',N'''-TETRAACETATE (three-letter code: DOE) (formula: C<sub>27</sub>H<sub>41</sub>N<sub>5</sub>O<sub>10</sub>S).



Mol	Chain	Residues	Atoms					ZeroOcc	AltConf
7	B	1	Total	C	N	O	S	0	0
			43	27	5	10	1		
7	D	1	Total	C	N	O	S	0	0
			43	27	5	10	1		

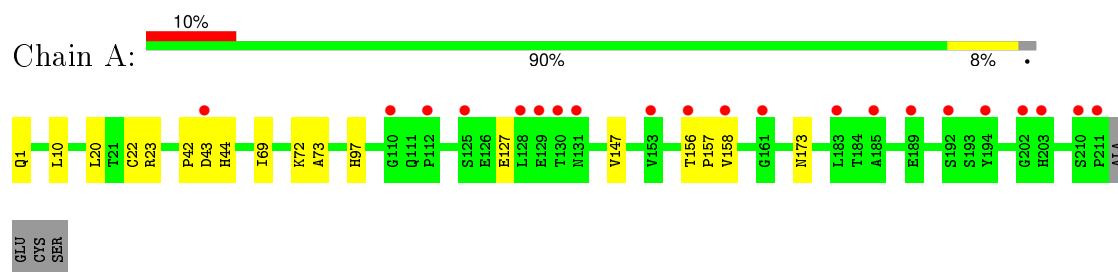
- Molecule 8 is water.

Mol	Chain	Residues	Atoms		ZeroOcc	AltConf
8	A	74	Total	O	0	0
			74	74		
8	B	88	Total	O	0	0
			88	88		
8	C	102	Total	O	0	0
			102	102		
8	D	98	Total	O	0	0
			98	98		

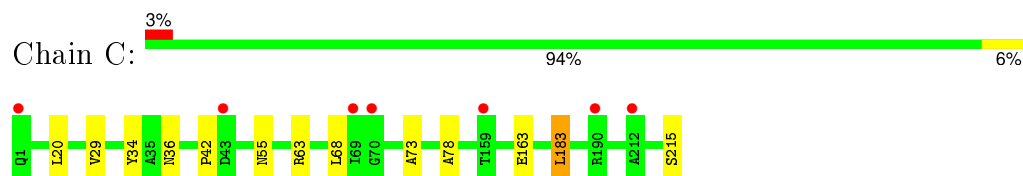
### 3 Residue-property plots [i](#)

These plots are drawn for all protein, RNA and DNA chains in the entry. The first graphic for a chain summarises the proportions of errors displayed in the second graphic. The second graphic shows the sequence view annotated by issues in geometry and electron density. Residues are color-coded according to the number of geometric quality criteria for which they contain at least one outlier: green = 0, yellow = 1, orange = 2 and red = 3 or more. A red dot above a residue indicates a poor fit to the electron density ( $RSRZ > 2$ ). Stretches of 2 or more consecutive residues without any outlier are shown as a green connector. Residues present in the sample, but not in the model, are shown in grey.

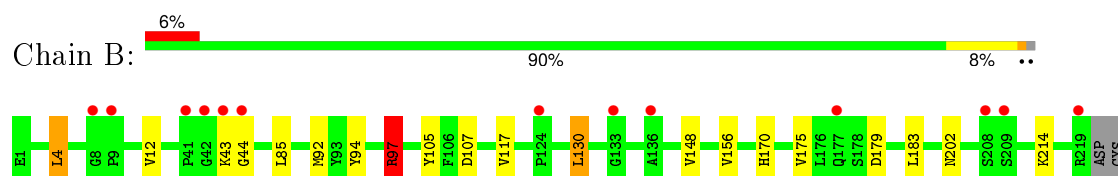
- Molecule 1: MONOCLONAL ANTIBODY 2D12.5, LAMBDA LIGHT CHAIN



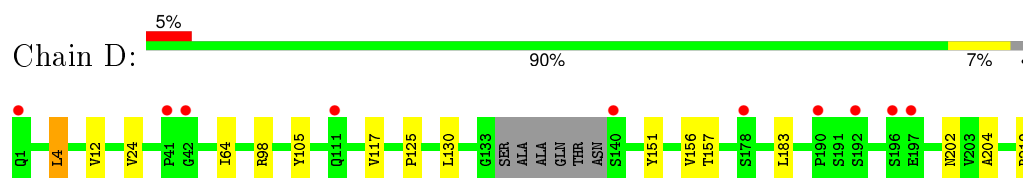
- Molecule 1: MONOCLONAL ANTIBODY 2D12.5, LAMBDA LIGHT CHAIN



- Molecule 2: MONOCLONAL ANTIBODY 2D12.5, IGG1 GAMMA HEAVY CHAIN



- Molecule 3: MONOCLONAL ANTIBODY 2D12.5, IGG1 GAMMA HEAVY CHAIN



## 4 Data and refinement statistics

Property	Value	Source
Space group	P 21 21 21	Depositor
Cell constants a, b, c, $\alpha$ , $\beta$ , $\gamma$	67.33Å 81.30Å 160.92Å 90.00° 90.00° 90.00°	Depositor
Resolution (Å)	29.20 – 2.10 29.19 – 2.10	Depositor EDS
% Data completeness (in resolution range)	95.9 (29.20-2.10) 96.0 (29.19-2.10)	Depositor EDS
$R_{merge}$	0.09	Depositor
$R_{sym}$	(Not available)	Depositor
$\langle I/\sigma(I) \rangle$ <sup>1</sup>	2.44 (at 2.10Å)	Xtriage
Refinement program	CNS 1.0	Depositor
R, $R_{free}$	0.209 , 0.247 0.208 , 0.250	Depositor DCC
$R_{free}$ test set	2558 reflections (5.36%)	DCC
Wilson B-factor (Å <sup>2</sup> )	26.1	Xtriage
Anisotropy	0.047	Xtriage
Bulk solvent $k_{sol}$ (e/Å <sup>3</sup> ), $B_{sol}$ (Å <sup>2</sup> )	0.35 , 48.2	EDS
Estimated twinning fraction	No twinning to report.	Xtriage
L-test for twinning <sup>2</sup>	$\langle  L  \rangle = 0.49$ , $\langle L^2 \rangle = 0.32$	Xtriage
Outliers	0 of 50284 reflections	Xtriage
$F_o, F_c$ correlation	0.94	EDS
Total number of atoms	6985	wwPDB-VP
Average B, all atoms (Å <sup>2</sup> )	29.0	wwPDB-VP

Xtriage's analysis on translational NCS is as follows: *The largest off-origin peak in the Patterson function is 3.91% of the height of the origin peak. No significant pseudotranslation is detected.*

<sup>1</sup>Intensities estimated from amplitudes.

<sup>2</sup>Theoretical values of  $\langle |L| \rangle$ ,  $\langle L^2 \rangle$  for acentric reflections are 0.5, 0.375 respectively for untwinned datasets, and 0.333, 0.2 for perfectly twinned datasets.



## 5 Model quality

### 5.1 Standard geometry

Bond lengths and bond angles in the following residue types are not validated in this section: YT3, DOE, PCA, NAG, CL

The Z score for a bond length (or angle) is the number of standard deviations the observed value is removed from the expected value. A bond length (or angle) with  $|Z| > 5$  is considered an outlier worth inspection. RMSZ is the root-mean-square of all Z scores of the bond lengths (or angles).

Mol	Chain	Bond lengths		Bond angles	
		RMSZ	$\# Z  > 5$	RMSZ	$\# Z  > 5$
1	A	0.67	0/1640	0.78	0/2245
1	C	0.68	0/1667	0.79	1/2280 (0.0%)
2	B	0.75	0/1698	0.86	5/2328 (0.2%)
3	D	0.73	0/1680	0.84	2/2298 (0.1%)
All	All	0.71	0/6685	0.82	8/9151 (0.1%)

There are no bond length outliers.

All (8) bond angle outliers are listed below:

Mol	Chain	Res	Type	Atoms	Z	Observed(°)	Ideal(°)
2	B	97	ARG	NE-CZ-NH2	-7.87	116.36	120.30
2	B	97	ARG	NE-CZ-NH1	7.02	123.81	120.30
2	B	4	LEU	CA-CB-CG	6.62	130.52	115.30
3	D	4	LEU	CA-CB-CG	6.54	130.34	115.30
2	B	183	LEU	CA-CB-CG	6.17	129.49	115.30
1	C	183	LEU	CA-CB-CG	5.65	128.30	115.30
2	B	130	LEU	CA-CB-CG	5.32	127.53	115.30
3	D	183	LEU	CA-CB-CG	5.19	127.24	115.30

There are no chirality outliers.

There are no planarity outliers.

### 5.2 Too-close contacts

In the following table, the Non-H and H(model) columns list the number of non-hydrogen atoms and hydrogen atoms in the chain respectively. The H(added) column lists the number of hydrogen atoms added and optimized by MolProbity. The Clashes column lists the number of clashes within the asymmetric unit, whereas Symm-Clashes lists symmetry related clashes.

Mol	Chain	Non-H	H(model)	H(added)	Clashes	Symm-Clashes
1	A	1600	0	1540	6	0
1	C	1627	0	1560	5	0
2	B	1658	0	1609	6	0
3	D	1634	0	1583	5	0
4	D	14	0	13	0	0
5	B	1	0	0	0	0
5	D	1	0	0	0	0
6	A	1	0	0	0	0
6	C	1	0	0	0	0
7	B	43	0	37	0	0
7	D	43	0	37	1	0
8	A	74	0	0	1	0
8	B	88	0	0	0	0
8	C	102	0	0	0	0
8	D	98	0	0	0	0
All	All	6985	0	6379	19	0

The all-atom clashscore is defined as the number of clashes found per 1000 atoms (including hydrogen atoms). The all-atom clashscore for this structure is 1.

All (19) close contacts within the same asymmetric unit are listed below, sorted by their clash magnitude.

Atom-1	Atom-2	Interatomic distance (Å)	Clash overlap (Å)
2:B:43:LYS:HG2	2:B:44:GLY:H	1.60	0.66
1:A:22:CYS:HB3	1:A:73:ALA:HB3	1.86	0.57
1:A:10:LEU:HD12	1:A:20:LEU:HD22	1.88	0.56
1:A:1:GLN:HE22	1:A:97:HIS:CD2	2.28	0.51
2:B:97:ARG:HD3	2:B:107:ASP:OD2	2.13	0.48
1:C:36:ASN:HD21	3:D:98:ARG:HH21	1.60	0.47
1:C:215:SER:HA	3:D:219:ARG:HH11	1.80	0.47
1:A:44:HIS:HB3	2:B:94:TYR:OH	2.15	0.46
3:D:125:PRO:HB3	3:D:151:TYR:HB3	1.99	0.45
2:B:148:VAL:HG11	2:B:156:VAL:HG11	1.98	0.45
1:A:69:ILE:O	1:A:72:LYS:HG2	2.17	0.45
1:C:63:ARG:HB2	1:C:78:ALA:O	2.17	0.45
1:C:29:VAL:HG11	1:C:73:ALA:HB2	2.01	0.42
3:D:12:VAL:O	3:D:117:VAL:HA	2.20	0.41
3:D:157:THR:OG1	3:D:204:ALA:HB3	2.20	0.41
2:B:12:VAL:O	2:B:117:VAL:HA	2.20	0.41
8:A:531:HOH:O	2:B:170:HIS:HD2	2.02	0.41
1:C:34:TYR:CE1	7:D:501:DOE:HC62	2.55	0.41
1:A:156:THR:HA	1:A:157:PRO:HD3	1.97	0.40

There are no symmetry-related clashes.

## 5.3 Torsion angles [i](#)

### 5.3.1 Protein backbone [i](#)

In the following table, the Percentiles column shows the percent Ramachandran outliers of the chain as a percentile score with respect to all X-ray entries followed by that with respect to entries of similar resolution.

The Analysed column shows the number of residues for which the backbone conformation was analysed, and the total number of residues.

Mol	Chain	Analysed	Favoured	Allowed	Outliers	Percentiles	
1	A	209/215 (97%)	201 (96%)	7 (3%)	1 (0%)	34	30
1	C	213/215 (99%)	206 (97%)	7 (3%)	0	100	100
2	B	217/221 (98%)	205 (94%)	12 (6%)	0	100	100
3	D	211/221 (96%)	204 (97%)	7 (3%)	0	100	100
All	All	850/872 (98%)	816 (96%)	33 (4%)	1 (0%)	56	58

All (1) Ramachandran outliers are listed below:

Mol	Chain	Res	Type
1	A	43	ASP

### 5.3.2 Protein sidechains [i](#)

In the following table, the Percentiles column shows the percent sidechain outliers of the chain as a percentile score with respect to all X-ray entries followed by that with respect to entries of similar resolution.

The Analysed column shows the number of residues for which the sidechain conformation was analysed, and the total number of residues.

Mol	Chain	Analysed	Rotameric	Outliers	Percentiles	
1	A	180/183 (98%)	174 (97%)	6 (3%)	45	47
1	C	183/183 (100%)	177 (97%)	6 (3%)	45	47
2	B	187/189 (99%)	177 (95%)	10 (5%)	28	25
3	D	186/190 (98%)	179 (96%)	7 (4%)	40	40
All	All	736/745 (99%)	707 (96%)	29 (4%)	39	39

All (29) residues with a non-rotameric sidechain are listed below:

Mol	Chain	Res	Type
1	A	23	ARG
1	A	42	PRO
1	A	127	GLU
1	A	147	VAL
1	A	158	VAL
1	A	173	ASN
2	B	4	LEU
2	B	85	LEU
2	B	92	MET
2	B	97	ARG
2	B	105	TYR
2	B	130	LEU
2	B	175	VAL
2	B	179	ASP
2	B	202	ASN
2	B	214	LYS
1	C	20	LEU
1	C	42	PRO
1	C	55	ASN
1	C	68	LEU
1	C	163	GLU
1	C	183	LEU
3	D	4	LEU
3	D	24	VAL
3	D	64	ILE
3	D	105	TYR
3	D	130	LEU
3	D	156	VAL
3	D	202	ASN

Some sidechains can be flipped to improve hydrogen bonding and reduce clashes. All (1) such sidechains are listed below:

Mol	Chain	Res	Type
1	A	1	GLN

### 5.3.3 RNA ⓘ

There are no RNA molecules in this entry.

## 5.4 Non-standard residues in protein, DNA, RNA chains ⓘ

1 non-standard protein/DNA/RNA residue is modelled in this entry.

In the following table, the Counts columns list the number of bonds (or angles) for which Mogul statistics could be retrieved, the number of bonds (or angles) that are observed in the model and the number of bonds (or angles) that are defined in the chemical component dictionary. The Link column lists molecule types, if any, to which the group is linked. The Z score for a bond length (or angle) is the number of standard deviations the observed value is removed from the expected value. A bond length (or angle) with  $|Z| > 2$  is considered an outlier worth inspection. RMSZ is the root-mean-square of all Z scores of the bond lengths (or angles).

Mol	Type	Chain	Res	Link	Bond lengths			Bond angles		
					Counts	RMSZ	$\# Z  > 2$	Counts	RMSZ	$\# Z  > 2$
2	PCA	B	1	2	7,8,9	2.07	2 (28%)	9,10,12	1.95	4 (44%)

In the following table, the Chirals column lists the number of chiral outliers, the number of chiral centers analysed, the number of these observed in the model and the number defined in the chemical component dictionary. Similar counts are reported in the Torsion and Rings columns. '-' means no outliers of that kind were identified.

Mol	Type	Chain	Res	Link	Chirals	Torsions	Rings
2	PCA	B	1	2	-	0/0/11/13	0/1/1/1

All (2) bond length outliers are listed below:

Mol	Chain	Res	Type	Atoms	Z	Observed(Å)	Ideal(Å)
2	B	1	PCA	CA-N	3.02	1.50	1.46
2	B	1	PCA	CD-N	4.46	1.48	1.33

All (4) bond angle outliers are listed below:

Mol	Chain	Res	Type	Atoms	Z	Observed(°)	Ideal(°)
2	B	1	PCA	CA-N-CD	-3.47	102.19	113.81
2	B	1	PCA	OE-CD-CG	-2.52	121.19	126.81
2	B	1	PCA	O-C-CA	-2.02	120.11	125.44
2	B	1	PCA	CB-CA-N	2.41	110.24	103.20

There are no chirality outliers.

There are no torsion outliers.

There are no ring outliers.

No monomer is involved in short contacts.

## 5.5 Carbohydrates [i](#)

There are no carbohydrates in this entry.

## 5.6 Ligand geometry [i](#)

Of 7 ligands modelled in this entry, 4 are monoatomic - leaving 3 for Mogul analysis.

In the following table, the Counts columns list the number of bonds (or angles) for which Mogul statistics could be retrieved, the number of bonds (or angles) that are observed in the model and the number of bonds (or angles) that are defined in the chemical component dictionary. The Link column lists molecule types, if any, to which the group is linked. The Z score for a bond length (or angle) is the number of standard deviations the observed value is removed from the expected value. A bond length (or angle) with  $|Z| > 2$  is considered an outlier worth inspection. RMSZ is the root-mean-square of all Z scores of the bond lengths (or angles).

Mol	Type	Chain	Res	Link	Bond lengths			Bond angles		
					Counts	RMSZ	# Z  > 2	Counts	RMSZ	# Z  > 2
7	DOE	B	500	-	32,44,44	1.95	13 (40%)	41,57,57	1.43	5 (12%)
4	NAG	D	400	3	14,14,15	1.90	3 (21%)	15,19,21	1.95	3 (20%)
7	DOE	D	501	-	32,44,44	2.09	13 (40%)	41,57,57	1.49	8 (19%)

In the following table, the Chirals column lists the number of chiral outliers, the number of chiral centers analysed, the number of these observed in the model and the number defined in the chemical component dictionary. Similar counts are reported in the Torsion and Rings columns. '-' means no outliers of that kind were identified.

Mol	Type	Chain	Res	Link	Chirals	Torsions	Rings
7	DOE	B	500	-	-	0/44/52/52	0/2/2/2
4	NAG	D	400	3	-	0/6/23/26	0/1/1/1
7	DOE	D	501	-	-	0/44/52/52	0/2/2/2

All (29) bond length outliers are listed below:

Mol	Chain	Res	Type	Atoms	Z	Observed(Å)	Ideal(Å)
4	D	400	NAG	O7-C7	-2.79	1.16	1.23
7	B	500	DOE	C21-N5	-2.45	1.37	1.41
7	B	500	DOE	C13-N3	2.10	1.51	1.47
7	D	501	DOE	C19-C18	2.14	1.43	1.38
7	D	501	DOE	C15-N4	2.19	1.51	1.47
7	B	500	DOE	C20-C19	2.27	1.42	1.38
7	D	501	DOE	C23-C22	2.35	1.43	1.38
7	B	500	DOE	C11-N2	2.35	1.51	1.47
7	D	501	DOE	C1-N1	2.48	1.55	1.48

*Continued on next page...*

*Continued from previous page...*

Mol	Chain	Res	Type	Atoms	Z	Observed(Å)	Ideal(Å)
7	B	500	DOE	C8-N1	2.51	1.51	1.47
7	B	500	DOE	C2-N2	2.54	1.52	1.47
7	B	500	DOE	C22-C21	2.63	1.43	1.39
7	D	501	DOE	C8-N1	2.74	1.52	1.47
7	B	500	DOE	C15-N4	2.76	1.52	1.47
7	D	501	DOE	C20-C19	2.79	1.43	1.38
7	B	500	DOE	C23-C18	2.79	1.44	1.38
7	B	500	DOE	C4-N3	2.92	1.54	1.47
7	B	500	DOE	C20-C21	2.93	1.44	1.39
7	D	501	DOE	C23-C18	3.01	1.45	1.38
4	D	400	NAG	C4-C5	3.02	1.59	1.53
7	B	500	DOE	C9-N1	3.02	1.52	1.47
7	D	501	DOE	C9-N1	3.05	1.52	1.47
7	D	501	DOE	C22-C21	3.09	1.44	1.39
7	D	501	DOE	C20-C21	3.18	1.44	1.39
7	D	501	DOE	C2-N2	3.26	1.53	1.47
7	D	501	DOE	C6-N4	3.32	1.55	1.47
4	D	400	NAG	C1-C2	4.57	1.58	1.52
7	B	500	DOE	C17-C1	4.70	1.60	1.53
7	D	501	DOE	C17-C1	4.90	1.60	1.53

All (16) bond angle outliers are listed below:

Mol	Chain	Res	Type	Atoms	Z	Observed(°)	Ideal(°)
7	D	501	DOE	C5-N3-C4	-3.02	104.19	111.45
4	D	400	NAG	C4-C3-C2	-3.01	106.54	111.23
7	D	501	DOE	C1-C2-N2	-2.61	110.04	113.36
7	B	500	DOE	C7-N4-C6	-2.61	105.19	111.45
7	B	500	DOE	C9-N1-C1	-2.53	107.55	113.01
7	D	501	DOE	C9-N1-C1	-2.15	108.36	113.01
7	D	501	DOE	C13-N3-C5	-2.12	106.85	111.28
7	D	501	DOE	O9-C24-C25	-2.02	117.83	121.46
7	B	500	DOE	C3-C4-N3	2.04	118.31	113.12
7	D	501	DOE	C25-C24-N5	2.05	117.27	114.52
4	D	400	NAG	O7-C7-N2	2.33	126.61	121.86
7	D	501	DOE	C12-C11-N2	3.09	118.11	113.53
7	B	500	DOE	C1-C2-N2	3.55	117.86	113.36
7	D	501	DOE	C21-N5-C24	3.85	134.76	127.47
7	B	500	DOE	C21-N5-C24	4.85	136.67	127.47
4	D	400	NAG	C2-N2-C7	5.37	129.94	123.04

There are no chirality outliers.

There are no torsion outliers.

There are no ring outliers.

1 monomer is involved in 1 short contact:

Mol	Chain	Res	Type	Clashes	Symm-Clashes
7	D	501	DOE	1	0

## 5.7 Other polymers [i](#)

There are no such residues in this entry.

## 5.8 Polymer linkage issues [i](#)

There are no chain breaks in this entry.



## 6 Fit of model and data ⓘ

### 6.1 Protein, DNA and RNA chains ⓘ

In the following table, the column labelled ‘#RSRZ> 2’ contains the number (and percentage) of RSRZ outliers, followed by percent RSRZ outliers for the chain as percentile scores relative to all X-ray entries and entries of similar resolution. The OWAB column contains the minimum, median, 95<sup>th</sup> percentile and maximum values of the occupancy-weighted average B-factor per residue. The column labelled ‘Q< 0.9’ lists the number of (and percentage) of residues with an average occupancy less than 0.9.

Mol	Chain	Analysed	<RSRZ>	#RSRZ>2	OWAB(Å <sup>2</sup> )	Q<0.9
1	A	211/215 (98%)	0.35	21 (9%) 9 13	13, 29, 60, 72	0
1	C	215/215 (100%)	-0.07	7 (3%) 50 59	15, 26, 42, 65	0
2	B	218/221 (98%)	0.22	13 (5%) 25 33	14, 26, 53, 58	0
3	D	215/221 (97%)	0.12	11 (5%) 32 40	14, 27, 49, 59	0
All	All	859/872 (98%)	0.16	52 (6%) 25 33	13, 27, 54, 72	0

All (52) RSRZ outliers are listed below:

Mol	Chain	Res	Type	RSRZ
2	B	41	PRO	5.4
1	A	192	SER	5.3
1	A	211	PRO	4.8
1	A	156	THR	4.2
1	A	130	THR	4.1
2	B	43	LYS	3.7
1	C	159	THR	3.7
3	D	221	CYS	3.5
1	A	210	SER	3.4
3	D	140	SER	3.3
1	C	212	ALA	3.3
3	D	42	GLY	3.1
1	C	69	ILE	3.1
3	D	1	GLN	3.0
1	A	43	ASP	2.9
2	B	208	SER	2.9
1	C	70	GLY	2.9
1	A	110	GLY	2.9
2	B	133	GLY	2.9
3	D	41	PRO	2.9
1	A	128	LEU	2.8

*Continued on next page...*

*Continued from previous page...*

Mol	Chain	Res	Type	RSRZ
1	C	1	GLN	2.8
2	B	9	PRO	2.7
3	D	190	PRO	2.7
1	A	112	PRO	2.6
2	B	42	GLY	2.6
1	C	190	ARG	2.6
2	B	8	GLY	2.6
2	B	209	SER	2.5
1	A	161	GLY	2.5
1	A	153	VAL	2.5
2	B	177	GLN	2.5
2	B	219	ARG	2.5
1	A	185	ALA	2.5
3	D	196	SER	2.4
3	D	197	GLU	2.4
1	A	158	VAL	2.4
1	A	183	LEU	2.4
3	D	192	SER	2.4
1	A	203	HIS	2.4
1	C	43	ASP	2.3
3	D	111	GLN	2.3
1	A	202	GLY	2.3
1	A	129	GLU	2.3
1	A	131	ASN	2.3
2	B	44	GLY	2.1
1	A	189	GLU	2.1
2	B	124	PRO	2.1
2	B	136	ALA	2.1
3	D	178	SER	2.1
1	A	125	SER	2.0
1	A	194	TYR	2.0

## 6.2 Non-standard residues in protein, DNA, RNA chains ⓘ

In the following table, the Atoms column lists the number of modelled atoms in the group and the number defined in the chemical component dictionary. LLDF column lists the quality of electron density of the group with respect to its neighbouring residues in protein, DNA or RNA chains. The B-factors column lists the minimum, median, 95<sup>th</sup> percentile and maximum values of B factors of atoms in the group. The column labelled 'Q< 0.9' lists the number of atoms with occupancy less than 0.9.

Mol	Type	Chain	Res	Atoms	RSCC	RSR	LLDF	B-factors( $\text{\AA}^2$ )	Q<0.9
2	PCA	B	1	8/9	0.95	0.09	-	23,24,27,29	0

### 6.3 Carbohydrates [i](#)

There are no carbohydrates in this entry.

### 6.4 Ligands [i](#)

In the following table, the Atoms column lists the number of modelled atoms in the group and the number defined in the chemical component dictionary. LLDF column lists the quality of electron density of the group with respect to its neighbouring residues in protein, DNA or RNA chains. The B-factors column lists the minimum, median, 95<sup>th</sup> percentile and maximum values of B factors of atoms in the group. The column labelled 'Q< 0.9' lists the number of atoms with occupancy less than 0.9.

Mol	Type	Chain	Res	Atoms	RSCC	RSR	LLDF	B-factors( $\text{\AA}^2$ )	Q<0.9
4	NAG	D	400	14/15	0.75	0.21	2.94	50,54,56,58	0
7	DOE	D	501	43/43	0.91	0.14	1.72	15,22,51,55	0
7	DOE	B	500	43/43	0.88	0.18	0.76	14,23,65,68	0
6	CL	A	504	1/1	0.87	0.11	-	65,65,65,65	0
5	YT3	B	502	1/1	1.00	0.08	-	23,23,23,23	0
5	YT3	D	503	1/1	1.00	0.08	-	21,21,21,21	0
6	CL	C	505	1/1	0.96	0.06	-	45,45,45,45	0

### 6.5 Other polymers [i](#)

There are no such residues in this entry.