



wwPDB X-ray Structure Validation Summary Report ⓘ

Jan 31, 2016 – 09:13 PM GMT

PDB ID : 1O0C
Title : CRYSTAL STRUCTURE OF L-GLUTAMATE AND AMPCPP BOUND TO
GLUTAMINE AMINOACYL TRNA SYNTHETASE
Authors : Bullock, T.L.; Perona, J.J.
Deposited on : 2003-02-20
Resolution : 2.70 Å(reported)

This is a wwPDB X-ray Structure Validation Summary Report for a publicly released PDB entry.
We welcome your comments at validation@mail.wwpdb.org
A user guide is available at
<http://wwpdb.org/validation/2016/XrayValidationReportHelp>
with specific help available everywhere you see the ⓘ symbol.

The following versions of software and data (see [references ⓘ](#)) were used in the production of this report:

MolProbity : 4.02b-467
Mogul : 1.7 (RC4), CSD as536be (2015)
Xtriage (Phenix) : **NOT EXECUTED**
EDS : **NOT EXECUTED**
Percentile statistics : 20151230.v01 (using entries in the PDB archive December 30th 2015)
Ideal geometry (proteins) : Engh & Huber (2001)
Ideal geometry (DNA, RNA) : Parkinson et al. (1996)
Validation Pipeline (wwPDB-VP) : trunk26865

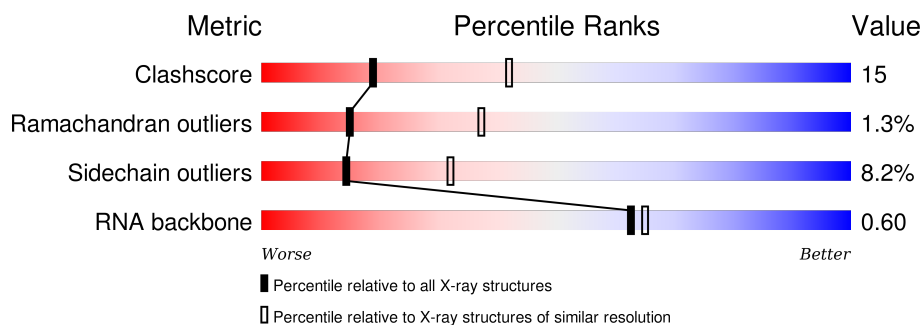
1 Overall quality at a glance

The following experimental techniques were used to determine the structure:

X-RAY DIFFRACTION

The reported resolution of this entry is 2.70 Å.



Percentile scores (ranging between 0-100) for global validation metrics of the entry are shown in the following graphic. The table shows the number of entries on which the scores are based.



Metric	Whole archive (#Entries)	Similar resolution (#Entries, resolution range(Å))
Clashscore	102246	2422 (2.70-2.70)
Ramachandran outliers	100387	2382 (2.70-2.70)
Sidechain outliers	100360	2382 (2.70-2.70)
RNA backbone	2183	1069 (3.10-2.30)

The table below summarises the geometric issues observed across the polymeric chains and their fit to the electron density. The red, orange, yellow and green segments on the lower bar indicate the fraction of residues that contain outliers for ≥ 3 , 2, 1 and 0 types of geometric quality criteria. A grey segment represents the fraction of residues that are not modelled. The numeric value for each fraction is indicated below the corresponding segment, with a dot representing fractions $\leq 5\%$. The upper red bar (where present) indicates the fraction of residues that have poor fit to the electron density. The numeric value is given above the bar.

Note EDS was not executed.

Mol	Chain	Length	Quality of chain
1	B	75	
2	A	554	

The following table lists non-polymeric compounds, carbohydrate monomers and non-standard residues in protein, DNA, RNA chains that are outliers for geometric or electron-density-fit criteria:

Mol	Type	Chain	Res	Chirality	Geometry	Clashes	Electron density
4	GLU	A	996	-	-	X	-

Continued on next page...

Continued from previous page...

Mol	Type	Chain	Res	Chirality	Geometry	Clashes	Electron density
5	AMP	A	998	X	-	-	-

2 Entry composition

There are 6 unique types of molecules in this entry. The entry contains 6036 atoms, of which 0 are hydrogens and 0 are deuteriums.

In the tables below, the ZeroOcc column contains the number of atoms modelled with zero occupancy, the AltConf column contains the number of residues with at least one atom in alternate conformation and the Trace column contains the number of residues modelled with at most 2 atoms.

- Molecule 1 is a RNA chain called Glutaminyl tRNA.

Mol	Chain	Residues	Atoms					ZeroOcc	AltConf	Trace
1	B	74	Total	C	N	O	P	0	0	0
			1570	702	279	516	73			

There is a discrepancy between the modelled and reference sequences:

Chain	Residue	Modelled	Actual	Comment	Reference
B	901	U	G	ENGINEERED	EMBL 43058

- Molecule 2 is a protein called Glutaminyl-tRNA synthetase.

Mol	Chain	Residues	Atoms					ZeroOcc	AltConf	Trace
2	A	529	Total	C	N	O	S	0	0	0
			4279	2704	752	802	21			

There is a discrepancy between the modelled and reference sequences:

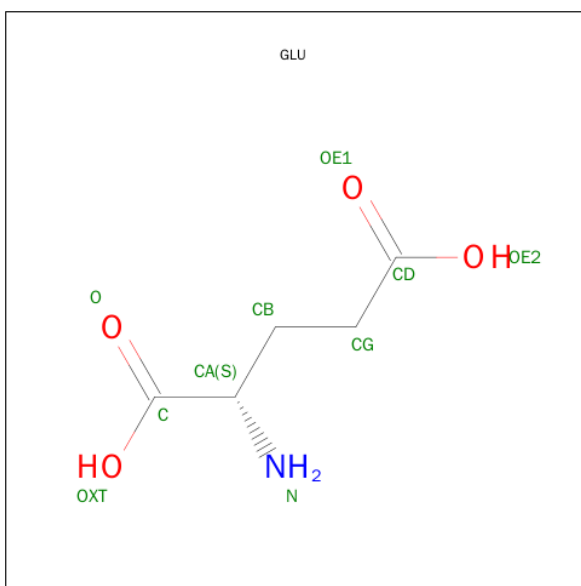
Chain	Residue	Modelled	Actual	Comment	Reference
A	0	MET	-	CLONING ARTIFACT	UNP P00962

- Molecule 3 is SULFATE ION (three-letter code: SO4) (formula: O₄S).



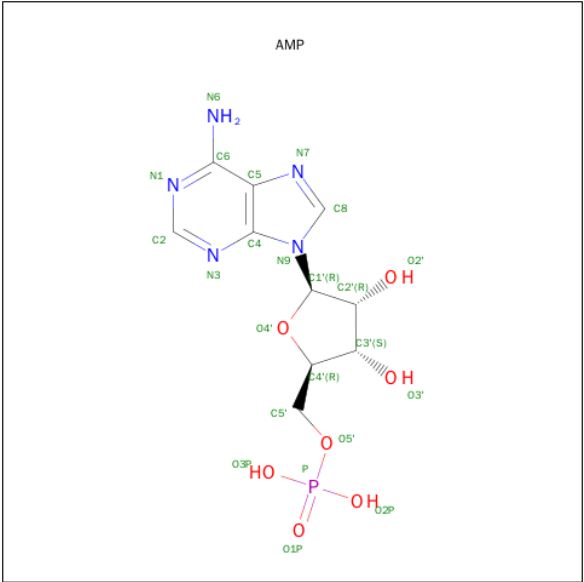
Mol	Chain	Residues	Atoms			ZeroOcc	AltConf
3	A	1	Total	O	S	0	0
			5	4	1		
3	A	1	Total	O	S	0	0
			5	4	1		

- Molecule 4 is GLUTAMIC ACID (three-letter code: GLU) (formula: $C_5H_9NO_4$).



Mol	Chain	Residues	Atoms				ZeroOcc	AltConf
4	A	1	Total	C	N	O	0	0
			10	5	1	4		

- Molecule 5 is ADENOSINE MONOPHOSPHATE (three-letter code: AMP) (formula: $C_{10}H_{14}N_5O_7P$).



Mol	Chain	Residues	Atoms					ZeroOcc	AltConf
5	A	1	Total	C	N	O	P	0	0
			23	10	5	7	1		

- Molecule 6 is water.

Mol	Chain	Residues	Atoms		ZeroOcc	AltConf
6	A	118	Total	O	0	0
			118	118		
6	B	26	Total	O	0	0
			26	26		

3 Residue-property plots

These plots are drawn for all protein, RNA and DNA chains in the entry. The first graphic for a chain summarises the proportions of errors displayed in the second graphic. The second graphic shows the sequence view annotated by issues in geometry and electron density. Residues are color-coded according to the number of geometric quality criteria for which they contain at least one outlier: green = 0, yellow = 1, orange = 2 and red = 3 or more. A red dot above a residue indicates a poor fit to the electron density ($\text{RSRZ} > 2$). Stretches of 2 or more consecutive residues without any outlier are shown as a green connector. Residues present in the sample, but not in the model, are shown in grey.

Note EDS was not executed.

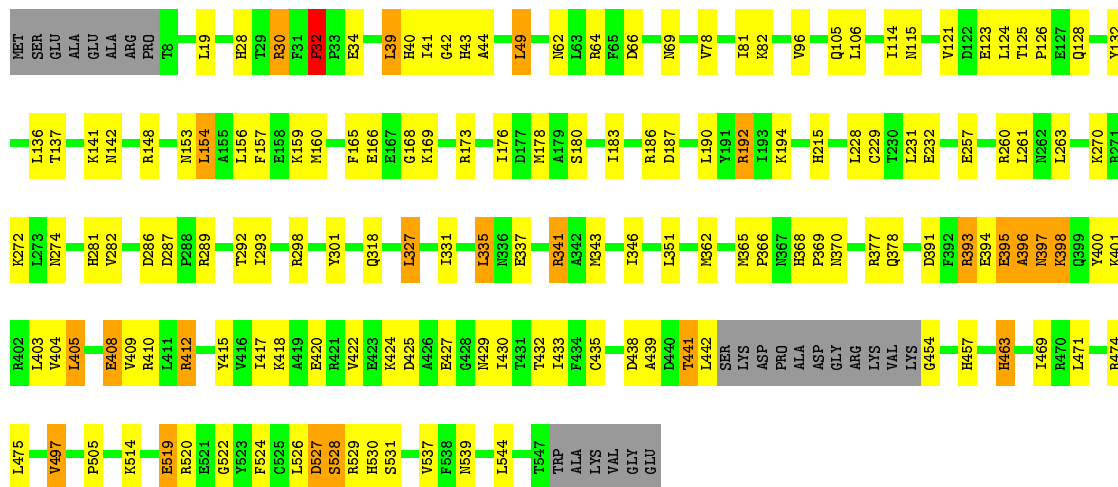
• Molecule 1: Glutaminyl tRNA

Chain B: 



• Molecule 2: Glutaminyl-tRNA synthetase

Chain A: 



4 Data and refinement statistics

Xtriage (Phenix) and EDS were not executed - this section will therefore be incomplete.

Property	Value	Source
Space group	C 2 2 21	Depositor
Cell constants a, b, c, α , β , γ	241.10 Å 94.58 Å 116.08 Å 90.00° 90.00° 90.00°	Depositor
Resolution (Å)	6.00 – 2.70	Depositor
% Data completeness (in resolution range)	(Not available) (6.00-2.70)	Depositor
R_{merge}	0.07	Depositor
R_{sym}	0.06	Depositor
Refinement program	X-PLOR 98.0	Depositor
R, R_{free}	0.213 , 0.265	Depositor
Estimated twinning fraction	No twinning to report.	Xtriage
Total number of atoms	6036	wwPDB-VP
Average B, all atoms (Å ²)	44.0	wwPDB-VP

5 Model quality ⓘ

5.1 Standard geometry ⓘ

Bond lengths and bond angles in the following residue types are not validated in this section: AMP, SO4

The Z score for a bond length (or angle) is the number of standard deviations the observed value is removed from the expected value. A bond length (or angle) with $|Z| > 5$ is considered an outlier worth inspection. RMSZ is the root-mean-square of all Z scores of the bond lengths (or angles).

Mol	Chain	Bond lengths		Bond angles	
		RMSZ	$\# Z > 5$	RMSZ	$\# Z > 5$
1	B	0.46	0/1753	0.88	8/2730 (0.3%)
2	A	0.44	0/4379	0.68	0/5928
All	All	0.44	0/6132	0.75	8/8658 (0.1%)

Chiral center outliers are detected by calculating the chiral volume of a chiral center and verifying if the center is modelled as a planar moiety or with the opposite hand. A planarity outlier is detected by checking planarity of atoms in a peptide group, atoms in a mainchain group or atoms of a sidechain that are expected to be planar.

Mol	Chain	#Chirality outliers	#Planarity outliers
1	B	0	4

There are no bond length outliers.

The worst 5 of 8 bond angle outliers are listed below:

Mol	Chain	Res	Type	Atoms	Z	Observed(°)	Ideal(°)
1	B	919	G	N9-C1'-C2'	6.70	122.71	114.00
1	B	918	G	N9-C1'-C2'	6.46	122.39	114.00
1	B	936	G	N9-C1'-C2'	6.29	122.18	114.00
1	B	974	C	N1-C1'-C2'	5.95	121.74	114.00
1	B	945	A	N9-C1'-C2'	5.86	121.62	114.00

There are no chirality outliers.

All (4) planarity outliers are listed below:

Mol	Chain	Res	Type	Group
1	B	919	G	Sidechain
1	B	935	U	Sidechain
1	B	948	C	Sidechain

Continued on next page...

Continued from previous page...

Mol	Chain	Res	Type	Group
1	B	960	U	Sidechain

5.2 Too-close contacts

In the following table, the Non-H and H(model) columns list the number of non-hydrogen atoms and hydrogen atoms in the chain respectively. The H(added) column lists the number of hydrogen atoms added and optimized by MolProbity. The Clashes column lists the number of clashes within the asymmetric unit, whereas Symm-Clashes lists symmetry related clashes.

Mol	Chain	Non-H	H(model)	H(added)	Clashes	Symm-Clashes
1	B	1570	0	801	60	0
2	A	4279	0	4172	112	0
3	A	10	0	0	2	0
4	A	10	0	5	4	0
5	A	23	0	10	2	0
6	A	118	0	0	6	0
6	B	26	0	0	0	0
All	All	6036	0	4988	163	0

The all-atom clashscore is defined as the number of clashes found per 1000 atoms (including hydrogen atoms). The all-atom clashscore for this structure is 15.

The worst 5 of 163 close contacts within the same asymmetric unit are listed below, sorted by their clash magnitude.

Atom-1	Atom-2	Interatomic distance (Å)	Clash overlap (Å)
1:B:946:U:H4'	1:B:947:U:C6	1.86	1.09
1:B:946:U:H4'	1:B:947:U:C5	1.95	1.01
2:A:531:SER:HB3	2:A:537:VAL:H	1.44	0.83
2:A:39:LEU:HD13	2:A:81:ILE:HG12	1.61	0.81
2:A:522:GLY:HA2	2:A:544:LEU:HD13	1.65	0.78

There are no symmetry-related clashes.

5.3 Torsion angles

5.3.1 Protein backbone

In the following table, the Percentiles column shows the percent Ramachandran outliers of the chain as a percentile score with respect to all X-ray entries followed by that with respect to entries of similar resolution.

The Analysed column shows the number of residues for which the backbone conformation was analysed, and the total number of residues.

Mol	Chain	Analysed	Favoured	Allowed	Outliers	Percentiles	
2	A	525/554 (95%)	500 (95%)	18 (3%)	7 (1%)	15	37

5 of 7 Ramachandran outliers are listed below:

Mol	Chain	Res	Type
2	A	397	ASN
2	A	405	LEU
2	A	32	PRO
2	A	396	ALA
2	A	527	ASP

5.3.2 Protein sidechains ⓘ

In the following table, the Percentiles column shows the percent sidechain outliers of the chain as a percentile score with respect to all X-ray entries followed by that with respect to entries of similar resolution.

The Analysed column shows the number of residues for which the sidechain conformation was analysed, and the total number of residues.

Mol	Chain	Analysed	Rotameric	Outliers	Percentiles	
2	A	463/482 (96%)	426 (92%)	37 (8%)	15	33

5 of 37 residues with a non-rotameric sidechain are listed below:

Mol	Chain	Res	Type
2	A	231	LEU
2	A	335	LEU
2	A	514	LYS
2	A	232	GLU
2	A	263	LEU

Some sidechains can be flipped to improve hydrogen bonding and reduce clashes. 5 of 13 such sidechains are listed below:

Mol	Chain	Res	Type
2	A	226	HIS
2	A	236	ASN
2	A	378	GLN
2	A	153	ASN

Continued on next page...

Continued from previous page...

Mol	Chain	Res	Type
2	A	368	HIS

5.3.3 RNA [i](#)

Mol	Chain	Analysed	Backbone Outliers	Pucker Outliers
1	B	73/75 (97%)	21 (28%)	13 (17%)

5 of 21 RNA backbone outliers are listed below:

Mol	Chain	Res	Type
1	B	907	A
1	B	908	U
1	B	909	C
1	B	910	G
1	B	916	C

5 of 13 RNA pucker outliers are listed below:

Mol	Chain	Res	Type
1	B	934	C
1	B	935	U
1	B	960	U
1	B	919	G
1	B	948	C

5.4 Non-standard residues in protein, DNA, RNA chains [i](#)

There are no non-standard protein/DNA/RNA residues in this entry.

5.5 Carbohydrates [i](#)

There are no carbohydrates in this entry.

5.6 Ligand geometry [i](#)

4 ligands are modelled in this entry.

In the following table, the Counts columns list the number of bonds (or angles) for which Mogul statistics could be retrieved, the number of bonds (or angles) that are observed in the model and

the number of bonds (or angles) that are defined in the chemical component dictionary. The Link column lists molecule types, if any, to which the group is linked. The Z score for a bond length (or angle) is the number of standard deviations the observed value is removed from the expected value. A bond length (or angle) with $|Z| > 2$ is considered an outlier worth inspection. RMSZ is the root-mean-square of all Z scores of the bond lengths (or angles).

Mol	Type	Chain	Res	Link	Bond lengths			Bond angles		
					Counts	RMSZ	# Z > 2	Counts	RMSZ	# Z > 2
3	SO4	A	1394	-	4,4,4	1.50	1 (25%)	6,6,6	0.47	0
3	SO4	A	1395	-	4,4,4	1.64	1 (25%)	6,6,6	0.49	0
4	GLU	A	996	-	3,9,9	0.37	0	2,11,11	0.19	0
5	AMP	A	998	-	20,25,25	2.08	6 (30%)	22,38,38	2.58	6 (27%)

In the following table, the Chirals column lists the number of chiral outliers, the number of chiral centers analysed, the number of these observed in the model and the number defined in the chemical component dictionary. Similar counts are reported in the Torsion and Rings columns. '-' means no outliers of that kind were identified.

Mol	Type	Chain	Res	Link	Chirals	Torsions	Rings
3	SO4	A	1394	-	-	0/0/0/0	0/0/0/0
3	SO4	A	1395	-	-	0/0/0/0	0/0/0/0
4	GLU	A	996	-	-	0/3/9/9	0/0/0/0
5	AMP	A	998	-	1/1/5/5	0/6/26/26	0/3/3/3

The worst 5 of 8 bond length outliers are listed below:

Mol	Chain	Res	Type	Atoms	Z	Observed(Å)	Ideal(Å)
5	A	998	AMP	O2'-C2'	-7.04	1.26	1.43
5	A	998	AMP	P-O5'	-2.42	1.52	1.60
5	A	998	AMP	P-O2P	-2.24	1.46	1.54
5	A	998	AMP	C8-N7	-2.20	1.30	1.34
5	A	998	AMP	O5'-C5'	2.02	1.53	1.44

The worst 5 of 6 bond angle outliers are listed below:

Mol	Chain	Res	Type	Atoms	Z	Observed(°)	Ideal(°)
5	A	998	AMP	C4'-O4'-C1'	-3.74	105.61	109.72
5	A	998	AMP	O3P-P-O2P	-2.59	97.50	107.38
5	A	998	AMP	O2P-P-O1P	2.60	118.96	110.58
5	A	998	AMP	O3P-P-O1P	2.79	119.55	110.58
5	A	998	AMP	O4'-C1'-N9	6.60	121.91	108.10

All (1) chirality outliers are listed below:

Mol	Chain	Res	Type	Atom
5	A	998	AMP	C1'

There are no torsion outliers.

There are no ring outliers.

4 monomers are involved in 7 short contacts:

Mol	Chain	Res	Type	Clashes	Symm-Clashes
3	A	1394	SO4	1	0
3	A	1395	SO4	1	0
4	A	996	GLU	4	0
5	A	998	AMP	2	0

5.7 Other polymers [i](#)

There are no such residues in this entry.

5.8 Polymer linkage issues [i](#)

There are no chain breaks in this entry.

6 Fit of model and data [i](#)

6.1 Protein, DNA and RNA chains [i](#)

EDS was not executed - this section will therefore be empty.

6.2 Non-standard residues in protein, DNA, RNA chains [i](#)

EDS was not executed - this section will therefore be empty.

6.3 Carbohydrates [i](#)

EDS was not executed - this section will therefore be empty.

6.4 Ligands [i](#)

EDS was not executed - this section will therefore be empty.

6.5 Other polymers [i](#)

EDS was not executed - this section will therefore be empty.