



Full wwPDB X-ray Structure Validation Report ⓘ

Jan 31, 2016 – 09:15 PM GMT

PDB ID : 1O5C
Title : Dissecting and Designing Inhibitor Selectivity Determinants at the S1 site Using an Artificial Ala190 Protease (Ala190 uPA)
Authors : Katz, B.A.; Luong, C.; Ho, J.D.; Somoza, J.R.; Gjerstad, E.; Tang, J.; Williams, S.R.; Verner, E.; Mackman, R.L.; Young, W.B.; Sprengeler, P.A.; Chan, H.; Mortara, K.; Janc, J.W.; McGrath, M.E.
Deposited on : 2003-09-09
Resolution : 1.63 Å(reported)

This is a Full wwPDB X-ray Structure Validation Report for a publicly released PDB entry.
We welcome your comments at validation@mail.wwpdb.org
A user guide is available at
<http://wwpdb.org/validation/2016/XrayValidationReportHelp>
with specific help available everywhere you see the ⓘ symbol.

The following versions of software and data (see [references ⓘ](#)) were used in the production of this report:

MolProbity : 4.02b-467
Mogul : 1.7 (RC4), CSD as536be (2015)
Xtriage (Phenix) : 1.9-1692
EDS : rb-20026688
Percentile statistics : 20151230.v01 (using entries in the PDB archive December 30th 2015)
Refmac : 5.8.0135
CCP4 : 6.5.0
Ideal geometry (proteins) : Engh & Huber (2001)
Ideal geometry (DNA, RNA) : Parkinson et al. (1996)
Validation Pipeline (wwPDB-VP) : trunk26865

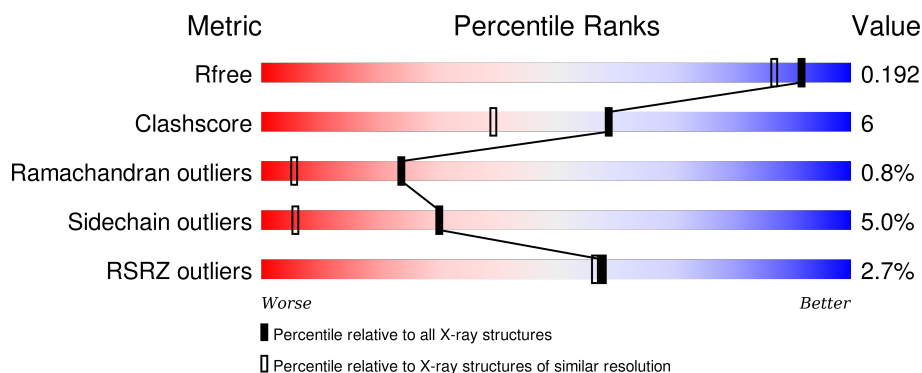
1 Overall quality at a glance

The following experimental techniques were used to determine the structure:

X-RAY DIFFRACTION

The reported resolution of this entry is 1.63 Å.

Percentile scores (ranging between 0-100) for global validation metrics of the entry are shown in the following graphic. The table shows the number of entries on which the scores are based.



Metric	Whole archive (#Entries)	Similar resolution (#Entries, resolution range(Å))
R_{free}	91344	1953 (1.66-1.62)
Clashscore	102246	2091 (1.66-1.62)
Ramachandran outliers	100387	2052 (1.66-1.62)
Sidechain outliers	100360	2052 (1.66-1.62)
RSRZ outliers	91569	1955 (1.66-1.62)

The table below summarises the geometric issues observed across the polymeric chains and their fit to the electron density. The red, orange, yellow and green segments on the lower bar indicate the fraction of residues that contain outliers for ≥ 3 , 2, 1 and 0 types of geometric quality criteria. A grey segment represents the fraction of residues that are not modelled. The numeric value for each fraction is indicated below the corresponding segment, with a dot representing fractions $\leq 5\%$. The upper red bar (where present) indicates the fraction of residues that have poor fit to the electron density. The numeric value is given above the bar.

Mol	Chain	Length	Quality of chain
1	A	23	
2	B	253	

The following table lists non-polymeric compounds, carbohydrate monomers and non-standard residues in protein, DNA, RNA chains that are outliers for geometric or electron-density-fit criteria:

Mol	Type	Chain	Res	Chirality	Geometry	Clashes	Electron density
3	CR9	B	251	X	-	-	-
4	CIT	B	1	-	-	-	X
4	CIT	B	2	-	-	-	X

2 Entry composition

There are 5 unique types of molecules in this entry. The entry contains 4786 atoms, of which 2479 are hydrogens and 0 are deuteriums.

In the tables below, the ZeroOcc column contains the number of atoms modelled with zero occupancy, the AltConf column contains the number of residues with at least one atom in alternate conformation and the Trace column contains the number of residues modelled with at most 2 atoms.

- Molecule 1 is a protein called Urokinase-type plasminogen activator.

Mol	Chain	Residues	Atoms						ZeroOcc	AltConf	Trace
1	A	9	Total	C	H	N	O	S	0	0	0
			147	46	75	13	12	1			

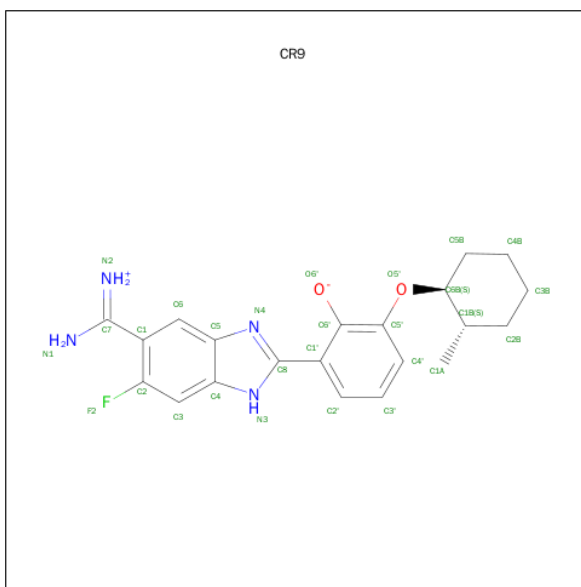
- Molecule 2 is a protein called Urokinase-type plasminogen activator.

Mol	Chain	Residues	Atoms						ZeroOcc	AltConf	Trace
2	B	246	Total	C	H	N	O	S	0	11	0
			3934	1252	1959	340	365	18			

There are 2 discrepancies between the modelled and reference sequences:

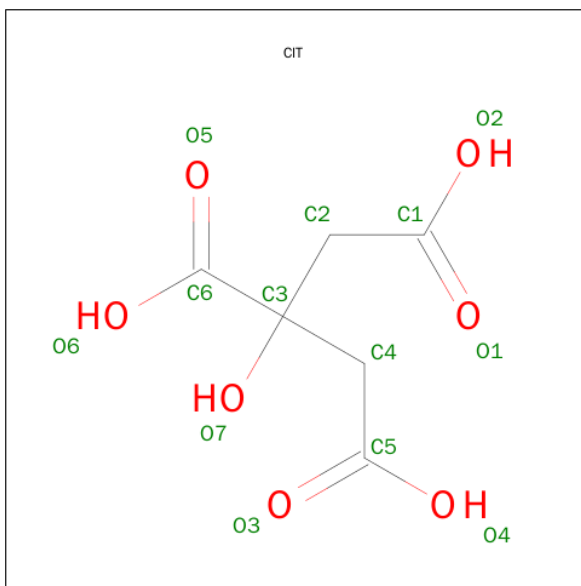
Chain	Residue	Modelled	Actual	Comment	Reference
B	145	ALA	ASN	ENGINEERED	UNP P00749
B	190	ALA	SER	ENGINEERED	UNP P00749

- Molecule 3 is 2-{5-[AMINO(IMINIO)METHYL]-6-FLUORO-1H-BENZIMIDAZOL-2-YL}-6-[(2-METHYLCYCLOHEXYL)OXY]BENZENOLATE (three-letter code: CR9) (formula: C₂₁H₂₃FN₄O₂).



Mol	Chain	Residues	Atoms						ZeroOcc	AltConf
3	B	1	Total	C	F	H	N	O	0	0
			51	21	1	23	4	2		

- Molecule 4 is CITRIC ACID (three-letter code: CIT) (formula: $C_6H_8O_7$).



Mol	Chain	Residues	Atoms				ZeroOcc	AltConf
4	B	1	Total	C	H	O	0	0
			18	6	5	7		
4	B	1	Total	C	H	O	0	0
			18	6	5	7		

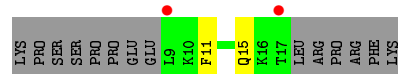
- Molecule 5 is water.

Mol	Chain	Residues	Atoms			ZeroOcc	AltConf
5	A	8	Total 24	H 16	O 8	0	0
5	B	197	Total 594	H 396	O 198	0	1

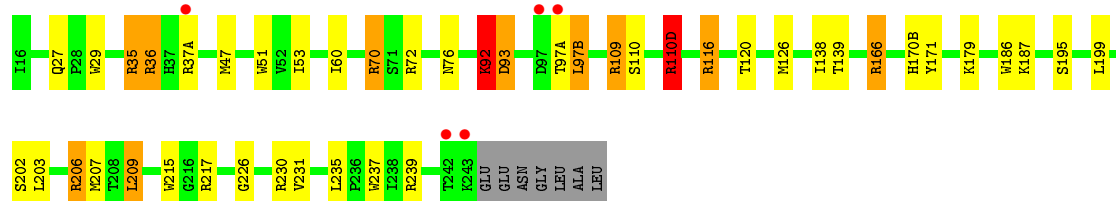
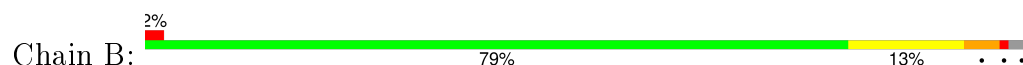
3 Residue-property plots [i](#)

These plots are drawn for all protein, RNA and DNA chains in the entry. The first graphic for a chain summarises the proportions of errors displayed in the second graphic. The second graphic shows the sequence view annotated by issues in geometry and electron density. Residues are color-coded according to the number of geometric quality criteria for which they contain at least one outlier: green = 0, yellow = 1, orange = 2 and red = 3 or more. A red dot above a residue indicates a poor fit to the electron density ($RSRZ > 2$). Stretches of 2 or more consecutive residues without any outlier are shown as a green connector. Residues present in the sample, but not in the model, are shown in grey.

- Molecule 1: Urokinase-type plasminogen activator



- Molecule 2: Urokinase-type plasminogen activator



4 Data and refinement statistics

Property	Value	Source
Space group	C 1 2 1	Depositor
Cell constants a, b, c, α , β , γ	81.71Å 50.28Å 66.20Å 90.00° 113.04° 90.00°	Depositor
Resolution (Å)	7.00 – 1.63 6.98 – 1.63	Depositor EDS
% Data completeness (in resolution range)	78.6 (7.00-1.63) 78.6 (6.98-1.63)	Depositor EDS
R_{merge}	0.07	Depositor
R_{sym}	(Not available)	Depositor
$\langle I/\sigma(I) \rangle$ ¹	0.61 (at 1.63Å)	Xtriage
Refinement program	X-PLOR 3.851	Depositor
R, R_{free}	0.191 , 0.219 0.191 , 0.192	Depositor DCC
R_{free} test set	2410 reflections (11.13%)	DCC
Wilson B-factor (Å ²)	17.3	Xtriage
Anisotropy	0.388	Xtriage
Bulk solvent k_{sol} (e/Å ³), B_{sol} (Å ²)	0.37 , 74.6	EDS
Estimated twinning fraction	No twinning to report.	Xtriage
L-test for twinning ²	$\langle L \rangle = 0.51$, $\langle L^2 \rangle = 0.34$	Xtriage
Outliers	0 of 24059 reflections	Xtriage
F_o, F_c correlation	0.96	EDS
Total number of atoms	4786	wwPDB-VP
Average B, all atoms (Å ²)	24.0	wwPDB-VP

Xtriage's analysis on translational NCS is as follows: *The largest off-origin peak in the Patterson function is 10.57% of the height of the origin peak. No significant pseudotranslation is detected.*

¹Intensities estimated from amplitudes.

²Theoretical values of $\langle |L| \rangle$, $\langle L^2 \rangle$ for acentric reflections are 0.5, 0.375 respectively for untwinned datasets, and 0.333, 0.2 for perfectly twinned datasets.

5 Model quality

5.1 Standard geometry

Bond lengths and bond angles in the following residue types are not validated in this section: CR9, CIT

The Z score for a bond length (or angle) is the number of standard deviations the observed value is removed from the expected value. A bond length (or angle) with $|Z| > 5$ is considered an outlier worth inspection. RMSZ is the root-mean-square of all Z scores of the bond lengths (or angles).

Mol	Chain	Bond lengths		Bond angles	
		RMSZ	$\# Z > 5$	RMSZ	$\# Z > 5$
1	A	1.24	0/72	1.35	0/93
2	B	1.32	1/2061 (0.0%)	1.55	38/2792 (1.4%)
All	All	1.31	1/2133 (0.0%)	1.54	38/2885 (1.3%)

Chiral center outliers are detected by calculating the chiral volume of a chiral center and verifying if the center is modelled as a planar moiety or with the opposite hand. A planarity outlier is detected by checking planarity of atoms in a peptide group, atoms in a mainchain group or atoms of a sidechain that are expected to be planar.

Mol	Chain	#Chirality outliers	#Planarity outliers
2	B	0	8

All (1) bond length outliers are listed below:

Mol	Chain	Res	Type	Atoms	Z	Observed(Å)	Ideal(Å)
2	B	51	TRP	CG-CD2	-5.29	1.34	1.43

All (38) bond angle outliers are listed below:

Mol	Chain	Res	Type	Atoms	Z	Observed(°)	Ideal(°)
2	B	36	ARG	NE-CZ-NH2	-10.33	115.14	120.30
2	B	186	TRP	CD1-NE1-CE2	10.19	118.17	109.00
2	B	29	TRP	CD1-NE1-CE2	9.86	117.87	109.00
2	B	237	TRP	CD1-NE1-CE2	9.80	117.82	109.00
2	B	51	TRP	CD1-NE1-CE2	9.26	117.34	109.00
2	B	215	TRP	CD1-NE1-CE2	9.17	117.25	109.00
2	B	51	TRP	NE1-CE2-CZ2	8.93	140.22	130.40
2	B	237	TRP	NE1-CE2-CZ2	8.44	139.68	130.40
2	B	29	TRP	NE1-CE2-CZ2	8.23	139.46	130.40
2	B	186	TRP	CG-CD1-NE1	-7.61	102.49	110.10

Continued on next page...

Continued from previous page...

Mol	Chain	Res	Type	Atoms	Z	Observed(°)	Ideal(°)
2	B	109	ARG	NE-CZ-NH2	-7.42	116.59	120.30
2	B	29	TRP	CG-CD1-NE1	-7.24	102.86	110.10
2	B	186	TRP	NE1-CE2-CZ2	7.20	138.31	130.40
2	B	215	TRP	NE1-CE2-CZ2	7.16	138.27	130.40
2	B	237	TRP	CG-CD1-NE1	-7.03	103.07	110.10
2	B	70	ARG	NE-CZ-NH2	-6.94	116.83	120.30
2	B	51	TRP	NE1-CE2-CD2	-6.93	100.36	107.30
2	B	51	TRP	CG-CD1-NE1	-6.93	103.17	110.10
2	B	237	TRP	NE1-CE2-CD2	-6.83	100.47	107.30
2	B	199	LEU	N-CA-C	-6.64	93.07	111.00
2	B	215	TRP	CG-CD1-NE1	-6.53	103.58	110.10
2	B	37(A)	ARG	NE-CZ-NH2	-6.29	117.16	120.30
2	B	29	TRP	NE1-CE2-CD2	-6.28	101.02	107.30
2	B	186	TRP	NE1-CE2-CD2	-6.10	101.20	107.30
2	B	207	MET	N-CA-C	-6.06	94.64	111.00
2	B	37(A)	ARG	N-CA-C	-5.98	94.86	111.00
2	B	166	ARG	NE-CZ-NH1	5.84	123.22	120.30
2	B	51	TRP	CG-CD2-CE3	-5.78	128.70	133.90
2	B	215	TRP	NE1-CE2-CD2	-5.78	101.52	107.30
2	B	92	LYS	N-CA-C	-5.47	96.22	111.00
2	B	171	TYR	N-CA-C	-5.18	97.02	111.00
2	B	226	GLY	N-CA-C	-5.17	100.18	113.10
2	B	72	ARG	NE-CZ-NH2	-5.13	117.74	120.30
2	B	166	ARG	NE-CZ-NH2	-5.08	117.76	120.30
2	B	35	ARG	CD-NE-CZ	-5.05	116.53	123.60
2	B	110(D)	ARG	NE-CZ-NH2	-5.04	117.78	120.30
2	B	35	ARG	NE-CZ-NH2	-5.04	117.78	120.30
2	B	206	ARG	NE-CZ-NH2	-5.01	117.79	120.30

There are no chirality outliers.

All (8) planarity outliers are listed below:

Mol	Chain	Res	Type	Group
2	B	109	ARG	Sidechain
2	B	110(D)	ARG	Sidechain
2	B	116	ARG	Sidechain
2	B	206	ARG	Sidechain
2	B	217	ARG	Sidechain
2	B	230	ARG	Sidechain
2	B	239	ARG	Sidechain
2	B	35	ARG	Sidechain

5.2 Too-close contacts ⓘ

In the following table, the Non-H and H(model) columns list the number of non-hydrogen atoms and hydrogen atoms in the chain respectively. The H(added) column lists the number of hydrogen atoms added and optimized by MolProbity. The Clashes column lists the number of clashes within the asymmetric unit, whereas Symm-Clashes lists symmetry related clashes.

Mol	Chain	Non-H	H(model)	H(added)	Clashes	Symm-Clashes
1	A	72	75	75	1	0
2	B	1975	1959	1928	19	1
3	B	28	23	23	3	0
4	B	26	10	10	5	0
5	A	8	16	0	0	0
5	B	198	396	0	3	1
All	All	2307	2479	2036	24	1

The all-atom clashscore is defined as the number of clashes found per 1000 atoms (including hydrogen atoms). The all-atom clashscore for this structure is 6.

All (24) close contacts within the same asymmetric unit are listed below, sorted by their clash magnitude.

Atom-1	Atom-2	Interatomic distance (Å)	Clash overlap (Å)
2:B:195[A]:SER:HG	3:B:251:CR9:HN3	1.25	0.84
2:B:92:LYS:H	2:B:92:LYS:HD2	1.57	0.69
4:B:1:CIT:O7	4:B:2:CIT:O7	2.13	0.67
2:B:92:LYS:H	2:B:92:LYS:CD	2.08	0.66
2:B:195[A]:SER:OG	3:B:251:CR9:N3	2.29	0.65
2:B:27:GLN:HG3	2:B:139[A]:THR:HG21	1.79	0.65
2:B:209[B]:LEU:CD1	2:B:231:VAL:HG21	2.33	0.59
2:B:170(B):HIS:H	2:B:170(B):HIS:CD2	2.28	0.52
2:B:195[A]:SER:OG	5:B:300:HOH:O	2.18	0.51
4:B:1:CIT:C5	4:B:2:CIT:O6	2.58	0.51
2:B:126:MET:HA	2:B:235[A]:LEU:HD12	1.95	0.48
2:B:27:GLN:CG	2:B:139[A]:THR:HG21	2.44	0.48
2:B:92:LYS:O	2:B:93:ASP:CB	2.61	0.47
2:B:195[A]:SER:CB	5:B:300:HOH:O	2.63	0.46
3:B:251:CR9:N3	5:B:300:HOH:O	2.35	0.46
2:B:47[B]:MET:SD	2:B:53:ILE:HB	2.56	0.45
2:B:138:ILE:C	2:B:139[A]:THR:HG23	2.36	0.45
2:B:36:ARG:HH22	4:B:2:CIT:C5	2.30	0.44
2:B:209[B]:LEU:HD12	2:B:231:VAL:HG21	2.01	0.43
2:B:110:SER:OG	2:B:110(D):ARG:HG2	2.18	0.43
4:B:1:CIT:HO7	4:B:2:CIT:HO7	1.51	0.42

Continued on next page...

Continued from previous page...

Atom-1	Atom-2	Interatomic distance (Å)	Clash overlap (Å)
2:B:97(A):THR:O	2:B:97(B):LEU:HB2	2.19	0.42
4:B:1:CIT:O6	4:B:2:CIT:O7	2.36	0.42
1:A:11:PHE:CD2	2:B:120:THR:HG23	2.56	0.41

All (1) symmetry-related close contacts are listed below. The label for Atom-2 includes the symmetry operator and encoded unit-cell translations to be applied.

Atom-1	Atom-2	Interatomic distance (Å)	Clash overlap (Å)
2:B:76:ASN:OD1	5:B:259:HOH:H1[2_656]	1.58	0.02

5.3 Torsion angles [i](#)

5.3.1 Protein backbone [i](#)

In the following table, the Percentiles column shows the percent Ramachandran outliers of the chain as a percentile score with respect to all X-ray entries followed by that with respect to entries of similar resolution.

The Analysed column shows the number of residues for which the backbone conformation was analysed, and the total number of residues.

Mol	Chain	Analysed	Favoured	Allowed	Outliers	Percentiles	
1	A	7/23 (30%)	7 (100%)	0	0	100	100
2	B	252/253 (100%)	238 (94%)	12 (5%)	2 (1%)	24	5
All	All	259/276 (94%)	245 (95%)	12 (5%)	2 (1%)	24	5

All (2) Ramachandran outliers are listed below:

Mol	Chain	Res	Type
2	B	93	ASP
2	B	97(B)	LEU

5.3.2 Protein sidechains [i](#)

In the following table, the Percentiles column shows the percent sidechain outliers of the chain as a percentile score with respect to all X-ray entries followed by that with respect to entries of similar resolution.

The Analysed column shows the number of residues for which the sidechain conformation was

analysed, and the total number of residues.

Mol	Chain	Analysed	Rotameric	Outliers	Percentiles	
1	A	8/22 (36%)	7 (88%)	1 (12%)	6	0
2	B	222/218 (102%)	211 (95%)	11 (5%)	30	6
All	All	230/240 (96%)	218 (95%)	12 (5%)	30	5

All (12) residues with a non-rotameric sidechain are listed below:

Mol	Chain	Res	Type
1	A	15	GLN
2	B	60	ILE
2	B	70	ARG
2	B	92	LYS
2	B	116	ARG
2	B	166	ARG
2	B	179	LYS
2	B	187	LYS
2	B	202	SER
2	B	203	LEU
2	B	209[A]	LEU
2	B	209[B]	LEU

Some sidechains can be flipped to improve hydrogen bonding and reduce clashes. All (4) such sidechains are listed below:

Mol	Chain	Res	Type
1	A	15	GLN
2	B	78	GLN
2	B	91	HIS
2	B	128	ASN

5.3.3 RNA ⓘ

There are no RNA molecules in this entry.

5.4 Non-standard residues in protein, DNA, RNA chains ⓘ

There are no non-standard protein/DNA/RNA residues in this entry.

5.5 Carbohydrates

There are no carbohydrates in this entry.

5.6 Ligand geometry

3 ligands are modelled in this entry.

In the following table, the Counts columns list the number of bonds (or angles) for which Mogul statistics could be retrieved, the number of bonds (or angles) that are observed in the model and the number of bonds (or angles) that are defined in the chemical component dictionary. The Link column lists molecule types, if any, to which the group is linked. The Z score for a bond length (or angle) is the number of standard deviations the observed value is removed from the expected value. A bond length (or angle) with $|Z| > 2$ is considered an outlier worth inspection. RMSZ is the root-mean-square of all Z scores of the bond lengths (or angles).

Mol	Type	Chain	Res	Link	Bond lengths			Bond angles		
					Counts	RMSZ	# $ Z > 2$	Counts	RMSZ	# $ Z > 2$
4	CIT	B	1	-	3,12,12	2.01	1 (33%)	3,17,17	1.31	0
4	CIT	B	2	-	3,12,12	2.37	2 (66%)	3,17,17	0.84	0
3	CR9	B	251	-	30,31,31	1.94	9 (30%)	36,45,45	2.24	11 (30%)

In the following table, the Chirals column lists the number of chiral outliers, the number of chiral centers analysed, the number of these observed in the model and the number defined in the chemical component dictionary. Similar counts are reported in the Torsion and Rings columns. '-' means no outliers of that kind were identified.

Mol	Type	Chain	Res	Link	Chirals	Torsions	Rings
4	CIT	B	1	-	-	0/6/16/16	0/0/0/0
4	CIT	B	2	-	-	0/6/16/16	0/0/0/0
3	CR9	B	251	-	1/1/3/3	0/9/23/23	0/4/4/4

All (12) bond length outliers are listed below:

Mol	Chain	Res	Type	Atoms	Z	Observed(Å)	Ideal(Å)
3	B	251	CR9	C5'-C6'	-4.26	1.38	1.43
3	B	251	CR9	C1-C7	-3.05	1.41	1.48
3	B	251	CR9	C6-C5	-2.94	1.37	1.41
3	B	251	CR9	C1'-C8	-2.75	1.41	1.48
3	B	251	CR9	C5-N4	-2.06	1.32	1.39
4	B	2	CIT	C2-C3	2.42	1.58	1.54
3	B	251	CR9	O6'-C6'	2.59	1.38	1.27
4	B	1	CIT	C2-C3	2.96	1.59	1.54
4	B	2	CIT	C4-C3	3.19	1.59	1.54

Continued on next page...

Continued from previous page...

Mol	Chain	Res	Type	Atoms	Z	Observed(Å)	Ideal(Å)
3	B	251	CR9	C6-C1	3.36	1.42	1.37
3	B	251	CR9	C1-C2	3.61	1.44	1.38
3	B	251	CR9	C3-C2	3.88	1.39	1.35

All (11) bond angle outliers are listed below:

Mol	Chain	Res	Type	Atoms	Z	Observed(°)	Ideal(°)
3	B	251	CR9	O6'-C6'-C5'	-7.21	115.20	121.36
3	B	251	CR9	C1-C6-C5	-4.27	117.81	121.52
3	B	251	CR9	N1-C7-N2	-3.45	116.72	120.47
3	B	251	CR9	F2-C2-C3	-3.11	115.59	119.74
3	B	251	CR9	C1A-C1B-C6B	-2.93	108.42	112.72
3	B	251	CR9	C8-N4-C5	-2.87	98.39	103.89
3	B	251	CR9	C4'-C5'-C6'	-2.34	120.10	121.10
3	B	251	CR9	C6-C5-N4	-2.06	124.58	130.70
3	B	251	CR9	C4-C5-N4	2.24	112.91	108.20
3	B	251	CR9	C1-C7-N2	3.51	123.40	119.34
3	B	251	CR9	C3-C4-C5	3.69	124.05	120.55

All (1) chirality outliers are listed below:

Mol	Chain	Res	Type	Atom
3	B	251	CR9	C1B

There are no torsion outliers.

There are no ring outliers.

3 monomers are involved in 8 short contacts:

Mol	Chain	Res	Type	Clashes	Symm-Clashes
4	B	1	CIT	4	0
4	B	2	CIT	5	0
3	B	251	CR9	3	0

5.7 Other polymers [i](#)

There are no such residues in this entry.

5.8 Polymer linkage issues [i](#)

There are no chain breaks in this entry.

6 Fit of model and data [i](#)

6.1 Protein, DNA and RNA chains [i](#)

In the following table, the column labelled ‘#RSRZ> 2’ contains the number (and percentage) of RSRZ outliers, followed by percent RSRZ outliers for the chain as percentile scores relative to all X-ray entries and entries of similar resolution. The OWAB column contains the minimum, median, 95th percentile and maximum values of the occupancy-weighted average B-factor per residue. The column labelled ‘Q< 0.9’ lists the number of (and percentage) of residues with an average occupancy less than 0.9.

Mol	Chain	Analysed	<RSRZ>	#RSRZ>2	OWAB(Å ²)	Q<0.9
1	A	9/23 (39%)	2.17	2 (22%) 1 1	18, 28, 40, 40	3 (33%)
2	B	246/253 (97%)	-0.23	5 (2%) 68 69	10, 18, 34, 56	22 (8%)
All	All	255/276 (92%)	-0.15	7 (2%) 58 56	10, 19, 35, 56	25 (9%)

All (7) RSRZ outliers are listed below:

Mol	Chain	Res	Type	RSRZ
1	A	9	LEU	12.7
2	B	243	LYS	11.1
1	A	17	THR	7.2
2	B	97(A)	THR	5.4
2	B	37(A)	ARG	3.7
2	B	97	ASP	2.9
2	B	242	THR	2.5

6.2 Non-standard residues in protein, DNA, RNA chains [i](#)

There are no non-standard protein/DNA/RNA residues in this entry.

6.3 Carbohydrates [i](#)

There are no carbohydrates in this entry.

6.4 Ligands [i](#)

In the following table, the Atoms column lists the number of modelled atoms in the group and the number defined in the chemical component dictionary. LLDF column lists the quality of electron density of the group with respect to its neighbouring residues in protein, DNA or RNA chains. The B-factors column lists the minimum, median, 95th percentile and maximum values of B factors

of atoms in the group. The column labelled 'Q< 0.9' lists the number of atoms with occupancy less than 0.9.

Mol	Type	Chain	Res	Atoms	RSCC	RSR	LLDF	B-factors(\AA^2)	Q<0.9
4	CIT	B	2	13/13	0.72	0.20	4.81	26,32,38,43	0
4	CIT	B	1	13/13	0.90	0.12	2.48	11,18,22,24	0
3	CR9	B	251	28/28	0.91	0.10	0.94	18,24,38,39	0

6.5 Other polymers [i](#)

There are no such residues in this entry.