



Full wwPDB X-ray Structure Validation Report ⓘ

Feb 1, 2016 – 11:15 AM GMT

PDB ID : 3OAG
Title : Design and optimization of new piperidines as renin inhibitors
Authors : Prade, L.
Deposited on : 2010-08-05
Resolution : 2.30 Å(reported)

This is a Full wwPDB X-ray Structure Validation Report for a publicly released PDB entry.
We welcome your comments at validation@mail.wwpdb.org
A user guide is available at
<http://wwpdb.org/validation/2016/XrayValidationReportHelp>
with specific help available everywhere you see the ⓘ symbol.

The following versions of software and data (see [references ⓘ](#)) were used in the production of this report:

MolProbity : 4.02b-467
Mogul : 1.7 (RC4), CSD as536be (2015)
Xtriage (Phenix) : 1.9-1692
EDS : rb-20026688
Percentile statistics : 20151230.v01 (using entries in the PDB archive December 30th 2015)
Refmac : 5.8.0135
CCP4 : 6.5.0
Ideal geometry (proteins) : Engh & Huber (2001)
Ideal geometry (DNA, RNA) : Parkinson et al. (1996)
Validation Pipeline (wwPDB-VP) : trunk26865

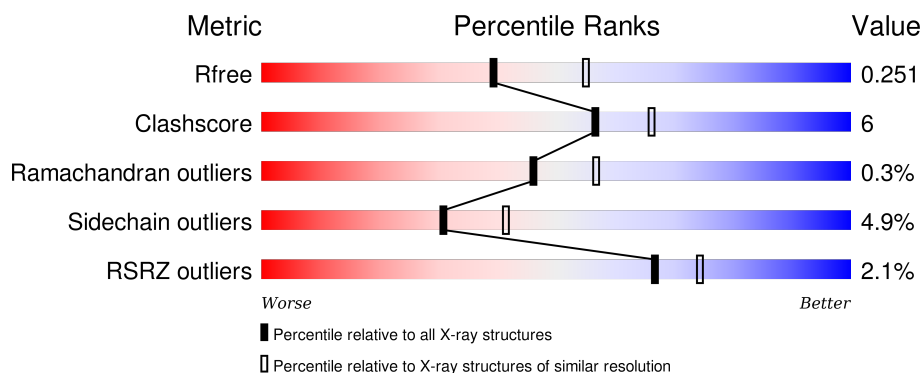
1 Overall quality at a glance

The following experimental techniques were used to determine the structure:

X-RAY DIFFRACTION

The reported resolution of this entry is 2.30 Å.

Percentile scores (ranging between 0-100) for global validation metrics of the entry are shown in the following graphic. The table shows the number of entries on which the scores are based.



Metric	Whole archive (#Entries)	Similar resolution (#Entries, resolution range(Å))
R_{free}	91344	3852 (2.30-2.30)
Clashscore	102246	4452 (2.30-2.30)
Ramachandran outliers	100387	4410 (2.30-2.30)
Sidechain outliers	100360	4409 (2.30-2.30)
RSRZ outliers	91569	3857 (2.30-2.30)

The table below summarises the geometric issues observed across the polymeric chains and their fit to the electron density. The red, orange, yellow and green segments on the lower bar indicate the fraction of residues that contain outliers for ≥ 3 , 2, 1 and 0 types of geometric quality criteria. A grey segment represents the fraction of residues that are not modelled. The numeric value for each fraction is indicated below the corresponding segment, with a dot representing fractions $\leq 5\%$. The upper red bar (where present) indicates the fraction of residues that have poor fit to the electron density. The numeric value is given above the bar.

Mol	Chain	Length	Quality of chain
1	A	166	<div> <div style="width: 100%; height: 10px; background: linear-gradient(to right, red 1%, orange 1%, yellow 16%, green 81%, grey 8%);"></div> <div style="display: flex; justify-content: space-between; width: 100%;"> % 81% 16% . </div> </div>
1	C	166	<div> <div style="width: 100%; height: 10px; background: linear-gradient(to right, red 2%, orange 1%, yellow 11%, green 85%, grey 3%);"></div> <div style="display: flex; justify-content: space-between; width: 100%;"> 2% 85% 11% ... </div> </div>
2	B	176	<div> <div style="width: 100%; height: 10px; background: linear-gradient(to right, red 1%, orange 1%, yellow 16%, green 80%, grey 4%);"></div> <div style="display: flex; justify-content: space-between; width: 100%;"> % 80% 16% .. </div> </div>
2	D	176	<div> <div style="width: 100%; height: 10px; background: linear-gradient(to right, red 5%, orange 1%, yellow 15%, green 81%, grey 4%);"></div> <div style="display: flex; justify-content: space-between; width: 100%;"> 5% 81% 15% .. </div> </div>

2 Entry composition

There are 5 unique types of molecules in this entry. The entry contains 5467 atoms, of which 0 are hydrogens and 0 are deuteriums.

In the tables below, the ZeroOcc column contains the number of atoms modelled with zero occupancy, the AltConf column contains the number of residues with at least one atom in alternate conformation and the Trace column contains the number of residues modelled with at most 2 atoms.

- Molecule 1 is a protein called Renin.

Mol	Chain	Residues	Atoms					ZeroOcc	AltConf	Trace
1	A	162	Total	C	N	O	S	0	0	0
			1252	801	196	248	7			
1	C	165	Total	C	N	O	S	0	0	0
			1275	817	199	252	7			

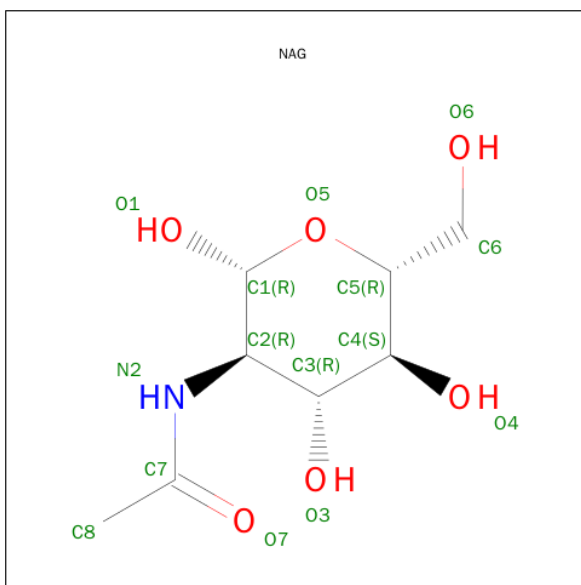
- Molecule 2 is a protein called Renin.

Mol	Chain	Residues	Atoms					ZeroOcc	AltConf	Trace
2	B	171	Total	C	N	O	S	0	1	0
			1327	847	224	249	7			
2	D	171	Total	C	N	O	S	0	0	0
			1317	841	221	248	7			

There are 12 discrepancies between the modelled and reference sequences:

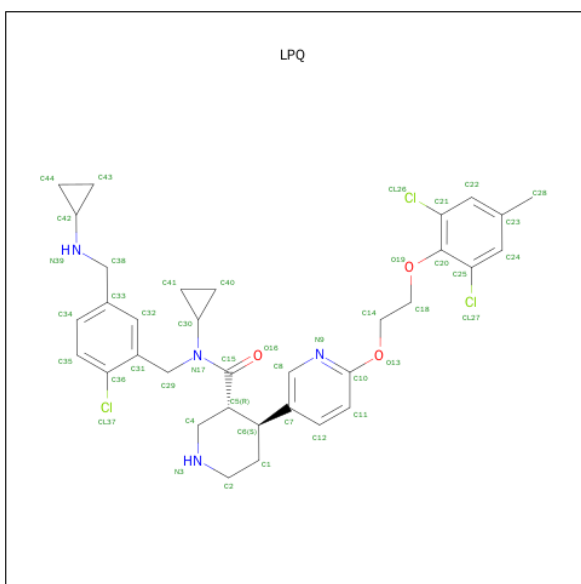
Chain	Residue	Modelled	Actual	Comment	Reference
B	341	HIS	-	EXPRESSION TAG	UNP P00797
B	342	HIS	-	EXPRESSION TAG	UNP P00797
B	343	HIS	-	EXPRESSION TAG	UNP P00797
B	344	HIS	-	EXPRESSION TAG	UNP P00797
B	345	HIS	-	EXPRESSION TAG	UNP P00797
B	346	HIS	-	EXPRESSION TAG	UNP P00797
D	341	HIS	-	EXPRESSION TAG	UNP P00797
D	342	HIS	-	EXPRESSION TAG	UNP P00797
D	343	HIS	-	EXPRESSION TAG	UNP P00797
D	344	HIS	-	EXPRESSION TAG	UNP P00797
D	345	HIS	-	EXPRESSION TAG	UNP P00797
D	346	HIS	-	EXPRESSION TAG	UNP P00797

- Molecule 3 is SUGAR (N-ACETYL-D-GLUCOSAMINE) (three-letter code: NAG) (formula: C₈H₁₅NO₆).



Mol	Chain	Residues	Atoms				ZeroOcc	AltConf
3	A	1	Total 14	C 8	N 1	O 5	0	0
3	C	1	Total 14	C 8	N 1	O 5	0	0

- Molecule 4 is (3R,4S)-N-{2-CHLORO-5-[(CYCLOPROPYLAMINO)METHYL]BENZYL}-N-CYCLOPROPYL-4-{6-[2-(2,6-DICHLORO-4-METHYLPHENOXY)ETHOXY]PYRIDIN-3-YL}PIPERIDINE-3-CARBOXAMIDE (three-letter code: LPQ) (formula: C₃₄H₃₉Cl₃N₄O₃).



Mol	Chain	Residues	Atoms					ZeroOcc	AltConf
4	A	1	Total	C	Cl	N	O	0	0
			44	34	3	4	3		
4	C	1	Total	C	Cl	N	O	0	0
			44	34	3	4	3		

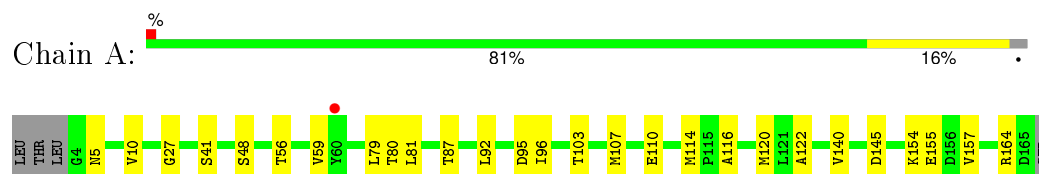
- Molecule 5 is water.

Mol	Chain	Residues	Atoms		ZeroOcc	AltConf
5	A	55	Total	O	0	0
			55	55		
5	B	43	Total	O	0	0
			43	43		
5	C	45	Total	O	0	0
			45	45		
5	D	37	Total	O	0	0
			37	37		

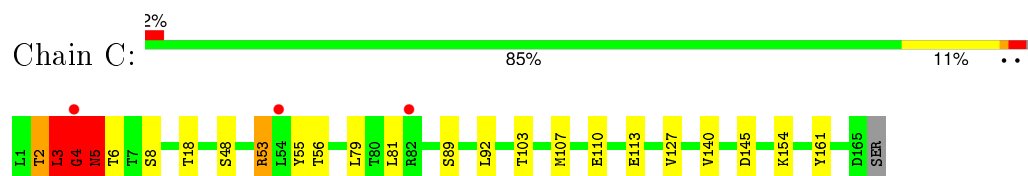
3 Residue-property plots [i](#)

These plots are drawn for all protein, RNA and DNA chains in the entry. The first graphic for a chain summarises the proportions of errors displayed in the second graphic. The second graphic shows the sequence view annotated by issues in geometry and electron density. Residues are color-coded according to the number of geometric quality criteria for which they contain at least one outlier: green = 0, yellow = 1, orange = 2 and red = 3 or more. A red dot above a residue indicates a poor fit to the electron density ($RSRZ > 2$). Stretches of 2 or more consecutive residues without any outlier are shown as a green connector. Residues present in the sample, but not in the model, are shown in grey.

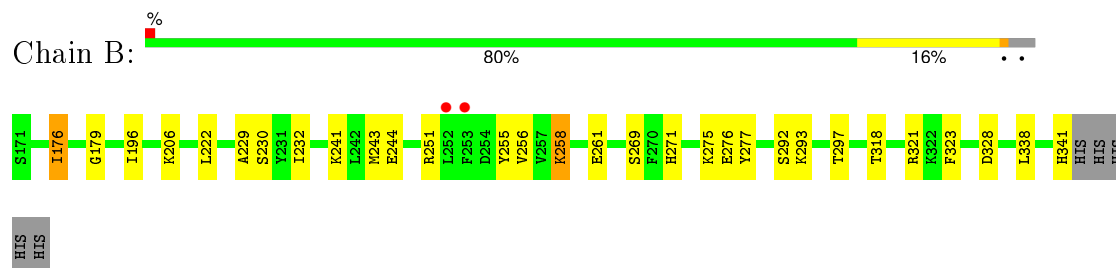
- Molecule 1: Renin



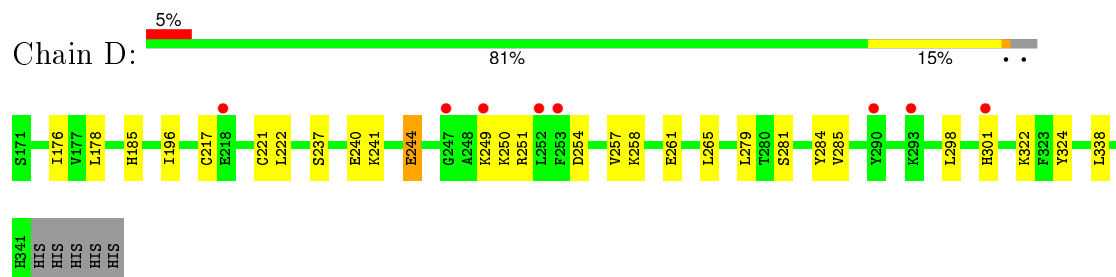
- Molecule 1: Renin



- Molecule 2: Renin



- Molecule 2: Renin



4 Data and refinement statistics

Property	Value	Source
Space group	P 21 21 21	Depositor
Cell constants a, b, c, α , β , γ	66.57Å 93.63Å 117.90Å 90.00° 90.00° 90.00°	Depositor
Resolution (Å)	58.00 – 2.30 57.97 – 2.30	Depositor EDS
% Data completeness (in resolution range)	85.8 (58.00-2.30) 85.8 (57.97-2.30)	Depositor EDS
R_{merge}	0.08	Depositor
R_{sym}	(Not available)	Depositor
$\langle I/\sigma(I) \rangle$ ¹	1.62 (at 2.29Å)	Xtriage
Refinement program	REFMAC 5.2.0019	Depositor
R, R_{free}	0.199 , 0.259 0.195 , 0.251	Depositor DCC
R_{free} test set	1445 reflections (5.30%)	DCC
Wilson B-factor (Å ²)	38.3	Xtriage
Anisotropy	0.050	Xtriage
Bulk solvent k_{sol} (e/Å ³), B_{sol} (Å ²)	0.36 , 41.6	EDS
Estimated twinning fraction	No twinning to report.	Xtriage
L-test for twinning ²	$\langle L \rangle = 0.49$, $\langle L^2 \rangle = 0.32$	Xtriage
Outliers	0 of 28690 reflections	Xtriage
F_o, F_c correlation	0.94	EDS
Total number of atoms	5467	wwPDB-VP
Average B, all atoms (Å ²)	42.0	wwPDB-VP

Xtriage's analysis on translational NCS is as follows: *The largest off-origin peak in the Patterson function is 4.67% of the height of the origin peak. No significant pseudotranslation is detected.*

¹Intensities estimated from amplitudes.

²Theoretical values of $\langle |L| \rangle$, $\langle L^2 \rangle$ for acentric reflections are 0.5, 0.375 respectively for untwinned datasets, and 0.333, 0.2 for perfectly twinned datasets.

5 Model quality

5.1 Standard geometry

Bond lengths and bond angles in the following residue types are not validated in this section: NAG, LPQ

The Z score for a bond length (or angle) is the number of standard deviations the observed value is removed from the expected value. A bond length (or angle) with $|Z| > 5$ is considered an outlier worth inspection. RMSZ is the root-mean-square of all Z scores of the bond lengths (or angles).

Mol	Chain	Bond lengths		Bond angles	
		RMSZ	$\# Z > 5$	RMSZ	$\# Z > 5$
1	A	0.50	0/1281	0.63	1/1741 (0.1%)
1	C	0.48	0/1304	0.67	2/1773 (0.1%)
2	B	0.45	0/1359	0.58	0/1839
2	D	0.43	0/1348	0.58	0/1824
All	All	0.46	0/5292	0.62	3/7177 (0.0%)

Chiral center outliers are detected by calculating the chiral volume of a chiral center and verifying if the center is modelled as a planar moiety or with the opposite hand. A planarity outlier is detected by checking planarity of atoms in a peptide group, atoms in a mainchain group or atoms of a sidechain that are expected to be planar.

Mol	Chain	#Chirality outliers	#Planarity outliers
1	C	0	1

There are no bond length outliers.

All (3) bond angle outliers are listed below:

Mol	Chain	Res	Type	Atoms	Z	Observed($^{\circ}$)	Ideal($^{\circ}$)
1	C	5	ASN	N-CA-C	8.52	134.00	111.00
1	A	79	LEU	CA-CB-CG	5.50	127.94	115.30
1	C	3	LEU	CA-CB-CG	5.09	127.02	115.30

There are no chirality outliers.

All (1) planarity outliers are listed below:

Mol	Chain	Res	Type	Group
1	C	4	GLY	Peptide

5.2 Too-close contacts ⓘ

In the following table, the Non-H and H(model) columns list the number of non-hydrogen atoms and hydrogen atoms in the chain respectively. The H(added) column lists the number of hydrogen atoms added and optimized by MolProbity. The Clashes column lists the number of clashes within the asymmetric unit, whereas Symm-Clashes lists symmetry related clashes.

Mol	Chain	Non-H	H(model)	H(added)	Clashes	Symm-Clashes
1	A	1252	0	1203	16	0
1	C	1275	0	1235	17	0
2	B	1327	0	1302	19	0
2	D	1317	0	1296	14	0
3	A	14	0	13	0	0
3	C	14	0	13	1	0
4	A	44	0	39	5	0
4	C	44	0	39	3	0
5	A	55	0	0	3	0
5	B	43	0	0	4	0
5	C	45	0	0	2	0
5	D	37	0	0	2	0
All	All	5467	0	5140	64	0

The all-atom clashscore is defined as the number of clashes found per 1000 atoms (including hydrogen atoms). The all-atom clashscore for this structure is 6.

All (64) close contacts within the same asymmetric unit are listed below, sorted by their clash magnitude.

Atom-1	Atom-2	Interatomic distance (Å)	Clash overlap (Å)
1:C:154:LYS:HD3	5:D:78:HOH:O	1.61	0.99
1:A:48:SER:HB2	1:A:110:GLU:HB3	1.52	0.89
1:A:5:ASN:HB2	5:A:212:HOH:O	1.72	0.88
1:C:5:ASN:OD1	1:C:154:LYS:HE2	1.78	0.84
1:C:55:TYR:CZ	1:C:113:GLU:HB2	2.28	0.68
2:B:196:ILE:HD13	2:B:222:LEU:CD2	2.29	0.62
2:D:254:ASP:HB3	2:D:301:HIS:CE1	2.37	0.59
2:B:258:LYS:O	2:B:261:GLU:HG2	2.02	0.59
4:A:167:LPQ:H44	2:B:229:ALA:HA	1.84	0.59
1:C:127:VAL:CG2	4:C:167:LPQ:CL27	2.89	0.58
2:D:185:HIS:HD2	5:D:126:HOH:O	1.86	0.58
1:C:53:ARG:HG2	5:C:211:HOH:O	2.05	0.56
1:C:48:SER:HB2	1:C:110:GLU:HB3	1.89	0.55
2:D:196:ILE:HD13	2:D:222:LEU:HD22	1.88	0.55
1:C:18:THR:O	4:C:167:LPQ:H42	2.07	0.55

Continued on next page...

Continued from previous page...

Atom-1	Atom-2	Interatomic distance (Å)	Clash overlap (Å)
2:B:196:ILE:HD13	2:B:222:LEU:HD22	1.89	0.54
2:B:206:LYS:HD2	5:B:91:HOH:O	2.07	0.54
2:B:271:HIS:CD2	5:B:91:HOH:O	2.60	0.53
1:A:96:ILE:HG23	1:A:103:THR:CG2	2.38	0.53
1:C:107:MET:HB2	1:C:140:VAL:CG1	2.39	0.53
1:A:56:THR:O	1:A:59:VAL:HG12	2.09	0.53
4:A:167:LPQ:H5	4:A:167:LPQ:C40	2.39	0.53
1:A:10:VAL:HB	2:B:176:ILE:HG23	1.91	0.53
2:D:196:ILE:CD1	2:D:222:LEU:HD22	2.39	0.53
1:A:154:LYS:HD3	5:B:135:HOH:O	2.09	0.53
2:D:258:LYS:O	2:D:261:GLU:HG2	2.08	0.53
2:D:257:VAL:HG11	2:D:265:LEU:HD11	1.90	0.53
1:A:157:VAL:HG12	2:B:328:ASP:HA	1.92	0.52
1:C:127:VAL:HG21	4:C:167:LPQ:CL27	2.48	0.51
2:D:285:VAL:HG22	2:D:298:LEU:CD2	2.42	0.50
1:C:4:GLY:HA2	1:C:6:THR:H	1.77	0.50
2:D:217:CYS:SG	2:D:221:CYS:N	2.85	0.49
4:A:167:LPQ:C15	4:A:167:LPQ:C12	2.90	0.49
1:C:161:TYR:HB2	2:D:324:TYR:CE2	2.48	0.49
3:C:166:NAG:H2	5:C:212:HOH:O	2.13	0.48
4:A:167:LPQ:N39	2:B:230:SER:OG	2.46	0.48
1:A:155:GLU:O	2:B:179:GLY:HA2	2.13	0.48
1:A:27:GLY:HA2	1:A:95:ASP:OD1	2.13	0.48
2:B:251:ARG:HD2	2:B:256:VAL:HG13	1.95	0.47
1:A:96:ILE:HG23	1:A:103:THR:HG23	1.95	0.47
2:B:232:ILE:HG13	2:B:318:THR:HB	1.96	0.47
2:D:250:LYS:HG2	2:D:251:ARG:O	2.15	0.47
2:D:240:GLU:O	2:D:244:GLU:HB2	2.15	0.47
1:A:92:LEU:HD21	1:A:140:VAL:HG21	1.96	0.46
2:B:241:LYS:HB2	2:B:241:LYS:HE3	1.70	0.46
1:A:80:THR:HG23	1:A:87:THR:HG23	1.96	0.46
1:A:164:ARG:HD3	5:A:204:HOH:O	2.16	0.46
1:C:92:LEU:HD21	1:C:140:VAL:HG21	1.99	0.45
1:A:122:ALA:HB3	4:A:167:LPQ:H28	1.99	0.44
2:B:275:LYS:HE2	5:B:348:HOH:O	2.16	0.44
1:C:89:SER:OG	1:C:113:GLU:HG2	2.18	0.44
2:B:243:MET:HG3	2:B:255:TYR:CD1	2.53	0.44
2:B:269:SER:HB3	2:B:276:GLU:OE1	2.18	0.43
1:C:107:MET:HB2	1:C:140:VAL:HG13	2.00	0.43
2:B:251:ARG:HD2	2:B:256:VAL:CG1	2.48	0.43
2:B:321:ARG:O	2:B:341:HIS:CE1	2.72	0.43

Continued on next page...

Continued from previous page...

Atom-1	Atom-2	Interatomic distance (Å)	Clash overlap (Å)
1:C:2:THR:OG1	1:C:3:LEU:N	2.52	0.42
1:C:8:SER:OG	2:D:178:LEU:HD12	2.19	0.42
1:A:41:SER:HB2	5:A:168:HOH:O	2.19	0.42
2:D:281:SER:HA	2:D:284:TYR:CE2	2.54	0.41
2:B:277:TYR:HB3	2:B:323:PHE:CE2	2.55	0.41
1:C:3:LEU:O	1:C:4:GLY:C	2.59	0.41
1:A:116:ALA:O	1:A:120:MET:HG2	2.20	0.41
2:D:281:SER:O	2:D:285:VAL:HG23	2.21	0.40

There are no symmetry-related clashes.

5.3 Torsion angles [i](#)

5.3.1 Protein backbone [i](#)

In the following table, the Percentiles column shows the percent Ramachandran outliers of the chain as a percentile score with respect to all X-ray entries followed by that with respect to entries of similar resolution.

The Analysed column shows the number of residues for which the backbone conformation was analysed, and the total number of residues.

Mol	Chain	Analysed	Favoured	Allowed	Outliers	Percentiles	
1	A	160/166 (96%)	158 (99%)	2 (1%)	0	100	100
1	C	163/166 (98%)	157 (96%)	4 (2%)	2 (1%)	16	16
2	B	170/176 (97%)	167 (98%)	3 (2%)	0	100	100
2	D	169/176 (96%)	164 (97%)	5 (3%)	0	100	100
All	All	662/684 (97%)	646 (98%)	14 (2%)	2 (0%)	46	57

All (2) Ramachandran outliers are listed below:

Mol	Chain	Res	Type
1	C	4	GLY
1	C	5	ASN

5.3.2 Protein sidechains [i](#)

In the following table, the Percentiles column shows the percent sidechain outliers of the chain as a percentile score with respect to all X-ray entries followed by that with respect to entries of similar

resolution.

The Analysed column shows the number of residues for which the sidechain conformation was analysed, and the total number of residues.

Mol	Chain	Analysed	Rotameric	Outliers	Percentiles	
1	A	141/145 (97%)	137 (97%)	4 (3%)	51	68
1	C	144/145 (99%)	135 (94%)	9 (6%)	22	29
2	B	143/147 (97%)	136 (95%)	7 (5%)	31	41
2	D	142/147 (97%)	134 (94%)	8 (6%)	26	35
All	All	570/584 (98%)	542 (95%)	28 (5%)	31	41

All (28) residues with a non-rotameric sidechain are listed below:

Mol	Chain	Res	Type
1	A	81	LEU
1	A	107	MET
1	A	114	MET
1	A	145	ASP
2	B	176	ILE
2	B	244	GLU
2	B	258	LYS
2	B	292	SER
2	B	293	LYS
2	B	297	THR
2	B	338	LEU
1	C	2	THR
1	C	3	LEU
1	C	5	ASN
1	C	53	ARG
1	C	56	THR
1	C	79	LEU
1	C	81	LEU
1	C	103	THR
1	C	145	ASP
2	D	176	ILE
2	D	237	SER
2	D	241	LYS
2	D	244	GLU
2	D	249	LYS
2	D	279	LEU
2	D	322	LYS
2	D	338	LEU

Some sidechains can be flipped to improve hydrogen bonding and reduce clashes. All (7) such sidechains are listed below:

Mol	Chain	Res	Type
2	B	184	GLN
2	B	194	ASN
2	B	202	GLN
2	B	341	HIS
1	C	94	GLN
2	D	194	ASN
2	D	301	HIS

5.3.3 RNA [i](#)

There are no RNA molecules in this entry.

5.4 Non-standard residues in protein, DNA, RNA chains [i](#)

There are no non-standard protein/DNA/RNA residues in this entry.

5.5 Carbohydrates [i](#)

There are no carbohydrates in this entry.

5.6 Ligand geometry [i](#)

4 ligands are modelled in this entry.

In the following table, the Counts columns list the number of bonds (or angles) for which Mogul statistics could be retrieved, the number of bonds (or angles) that are observed in the model and the number of bonds (or angles) that are defined in the chemical component dictionary. The Link column lists molecule types, if any, to which the group is linked. The Z score for a bond length (or angle) is the number of standard deviations the observed value is removed from the expected value. A bond length (or angle) with $|Z| > 2$ is considered an outlier worth inspection. RMSZ is the root-mean-square of all Z scores of the bond lengths (or angles).

Mol	Type	Chain	Res	Link	Bond lengths			Bond angles		
					Counts	RMSZ	# Z > 2	Counts	RMSZ	# Z > 2
3	NAG	A	166	1	14,14,15	0.41	0	15,19,21	1.32	1 (6%)
4	LPQ	A	167	-	48,49,49	1.07	4 (8%)	60,69,69	2.44	17 (28%)
3	NAG	C	166	1	14,14,15	0.44	0	15,19,21	1.36	1 (6%)
4	LPQ	C	167	-	48,49,49	1.15	7 (14%)	60,69,69	2.46	19 (31%)

In the following table, the Chirals column lists the number of chiral outliers, the number of chiral centers analysed, the number of these observed in the model and the number defined in the chemical component dictionary. Similar counts are reported in the Torsion and Rings columns. '-' means no outliers of that kind were identified.

Mol	Type	Chain	Res	Link	Chirals	Torsions	Rings
3	NAG	A	166	1	-	2/6/23/26	0/1/1/1
4	LPQ	A	167	-	-	0/26/47/47	0/4/6/6
3	NAG	C	166	1	-	0/6/23/26	0/1/1/1
4	LPQ	C	167	-	-	0/26/47/47	0/4/6/6

All (11) bond length outliers are listed below:

Mol	Chain	Res	Type	Atoms	Z	Observed(Å)	Ideal(Å)
4	A	167	LPQ	C43-C42	2.04	1.53	1.48
4	C	167	LPQ	C41-C30	2.16	1.53	1.48
4	C	167	LPQ	C44-C42	2.19	1.53	1.48
4	C	167	LPQ	C40-C30	2.21	1.53	1.48
4	A	167	LPQ	C41-C30	2.41	1.54	1.48
4	A	167	LPQ	C36-CL37	2.51	1.79	1.73
4	C	167	LPQ	C25-CL27	2.60	1.80	1.73
4	C	167	LPQ	C21-CL26	2.68	1.80	1.73
4	C	167	LPQ	C36-CL37	2.74	1.80	1.73
4	A	167	LPQ	C10-N9	2.95	1.36	1.32
4	C	167	LPQ	C10-N9	3.11	1.36	1.32

All (38) bond angle outliers are listed below:

Mol	Chain	Res	Type	Atoms	Z	Observed(°)	Ideal(°)
4	C	167	LPQ	C40-C30-N17	-8.94	106.13	118.91
4	A	167	LPQ	C29-N17-C30	-6.61	110.54	118.70
4	A	167	LPQ	C41-C30-N17	-6.06	110.24	118.91
4	A	167	LPQ	C40-C30-N17	-5.42	111.16	118.91
4	C	167	LPQ	C44-C42-N39	-4.65	111.52	118.71
4	C	167	LPQ	C41-C30-N17	-4.63	112.28	118.91
4	A	167	LPQ	C43-C42-N39	-4.61	111.58	118.71
4	C	167	LPQ	C29-N17-C30	-4.51	113.13	118.70
4	A	167	LPQ	C44-C42-N39	-3.86	112.73	118.71
4	C	167	LPQ	C6-C5-C15	-3.53	105.35	111.31
4	C	167	LPQ	C7-C8-N9	-3.50	120.00	124.87
4	A	167	LPQ	C11-C10-N9	-3.49	119.62	124.81
4	C	167	LPQ	C43-C42-N39	-3.22	113.73	118.71
4	A	167	LPQ	C7-C6-C5	-3.19	106.95	112.72
4	A	167	LPQ	C7-C8-N9	-2.95	120.77	124.87

Continued on next page...

Continued from previous page...

Mol	Chain	Res	Type	Atoms	Z	Observed(°)	Ideal(°)
4	C	167	LPQ	C11-C10-N9	-2.82	120.61	124.81
4	C	167	LPQ	O19-C20-C21	-2.39	118.33	121.19
4	C	167	LPQ	C38-C33-C32	-2.36	116.43	120.62
4	A	167	LPQ	C6-C5-C15	-2.20	107.59	111.31
4	C	167	LPQ	O16-C15-C5	-2.12	118.00	121.92
4	A	167	LPQ	O16-C15-C5	-2.08	118.08	121.92
4	C	167	LPQ	C12-C7-C8	2.02	118.96	116.72
4	C	167	LPQ	C20-C25-CL27	2.07	120.97	118.43
4	C	167	LPQ	C24-C23-C22	2.07	120.72	118.08
4	C	167	LPQ	C18-O19-C20	2.25	120.88	114.14
4	A	167	LPQ	O13-C10-N9	2.45	123.38	119.20
4	A	167	LPQ	C1-C2-N3	2.72	115.07	110.46
4	C	167	LPQ	C14-O13-C10	3.40	124.14	117.83
4	A	167	LPQ	C14-O13-C10	3.46	124.24	117.83
3	A	166	NAG	C1-O5-C5	3.73	116.98	112.25
4	A	167	LPQ	C2-C1-C6	3.85	114.63	111.32
4	A	167	LPQ	C4-N3-C2	4.19	117.71	111.66
4	C	167	LPQ	C31-C29-N17	4.44	120.69	113.52
3	C	166	NAG	C1-O5-C5	4.48	117.93	112.25
4	A	167	LPQ	C31-C29-N17	5.88	123.04	113.52
4	C	167	LPQ	C4-N3-C2	5.94	120.24	111.66
4	A	167	LPQ	C8-N9-C10	5.99	121.46	116.72
4	C	167	LPQ	C8-N9-C10	6.07	121.53	116.72

There are no chirality outliers.

All (2) torsion outliers are listed below:

Mol	Chain	Res	Type	Atoms
3	A	166	NAG	C8-C7-N2-C2
3	A	166	NAG	O7-C7-N2-C2

There are no ring outliers.

3 monomers are involved in 9 short contacts:

Mol	Chain	Res	Type	Clashes	Symm-Clashes
4	A	167	LPQ	5	0
3	C	166	NAG	1	0
4	C	167	LPQ	3	0

5.7 Other polymers [i](#)

There are no such residues in this entry.

5.8 Polymer linkage issues [i](#)

There are no chain breaks in this entry.

6 Fit of model and data ⓘ

6.1 Protein, DNA and RNA chains ⓘ

In the following table, the column labelled ‘#RSRZ> 2’ contains the number (and percentage) of RSRZ outliers, followed by percent RSRZ outliers for the chain as percentile scores relative to all X-ray entries and entries of similar resolution. The OWAB column contains the minimum, median, 95th percentile and maximum values of the occupancy-weighted average B-factor per residue. The column labelled ‘Q< 0.9’ lists the number of (and percentage) of residues with an average occupancy less than 0.9.

Mol	Chain	Analysed	<RSRZ>	#RSRZ>2	OWAB(Å ²)	Q<0.9
1	A	162/166 (97%)	-0.08	1 (0%) 90 93	22, 34, 55, 70	0
1	C	165/166 (99%)	0.03	3 (1%) 71 78	22, 41, 63, 76	0
2	B	171/176 (97%)	0.06	2 (1%) 81 85	24, 39, 60, 74	0
2	D	171/176 (97%)	0.31	8 (4%) 35 44	24, 48, 83, 93	0
All	All	669/684 (97%)	0.08	14 (2%) 67 74	22, 39, 70, 93	0

All (14) RSRZ outliers are listed below:

Mol	Chain	Res	Type	RSRZ
2	B	252	LEU	5.0
2	D	252	LEU	3.7
1	C	54	LEU	3.4
2	D	290	TYR	3.0
2	D	253	PHE	2.8
2	D	293	LYS	2.4
2	D	249	LYS	2.3
1	C	82	ARG	2.3
2	D	247	GLY	2.2
2	D	218	GLU	2.2
2	D	301	HIS	2.1
1	C	4	GLY	2.1
1	A	60	TYR	2.1
2	B	253	PHE	2.0

6.2 Non-standard residues in protein, DNA, RNA chains ⓘ

There are no non-standard protein/DNA/RNA residues in this entry.

6.3 Carbohydrates [i](#)

There are no carbohydrates in this entry.

6.4 Ligands [i](#)

In the following table, the Atoms column lists the number of modelled atoms in the group and the number defined in the chemical component dictionary. LLDF column lists the quality of electron density of the group with respect to its neighbouring residues in protein, DNA or RNA chains. The B-factors column lists the minimum, median, 95th percentile and maximum values of B factors of atoms in the group. The column labelled 'Q< 0.9' lists the number of atoms with occupancy less than 0.9.

Mol	Type	Chain	Res	Atoms	RSCC	RSR	LLDF	B-factors(\AA^2)	Q<0.9
4	LPQ	C	167	44/44	0.91	0.16	0.99	38,46,50,50	0
4	LPQ	A	167	44/44	0.94	0.13	0.28	32,38,47,49	0
3	NAG	A	166	14/15	0.81	0.16	0.16	61,65,67,68	0
3	NAG	C	166	14/15	0.83	0.19	-	65,69,72,72	0

6.5 Other polymers [i](#)

There are no such residues in this entry.